

Supplementary Material

Microfluidic nano-scale qPCR enables ultra-sensitive detection of SARS-CoV-2

Xin Xie¹, Tamara Gjorgjieva^{2,3}, Zaynoun Attieh¹, Mame Massar Dieng², Marc Arnoux⁴, Mostafa Khair⁴, Yasmine Moussa¹, Fatima Al Jallaf^{2,3}, Nabil Rahiman¹, Christopher A. Jackson⁶, Zyrone Victoria⁵, Mohammed Zafar⁵, Raghieb Ali³, Fabio Piano^{1,6}, Kristin C. Gunsalus^{1,3,6,#}, Youssef Idaghdour^{2,3,#}

¹Center for Genomics and Systems Biology, New York University Abu Dhabi, Abu Dhabi, United Arab Emirates

²Program in Biology, Division of Science, New York University Abu Dhabi, Abu Dhabi, United Arab Emirates

³Public Health Research Center, New York University Abu Dhabi, United Arab Emirates

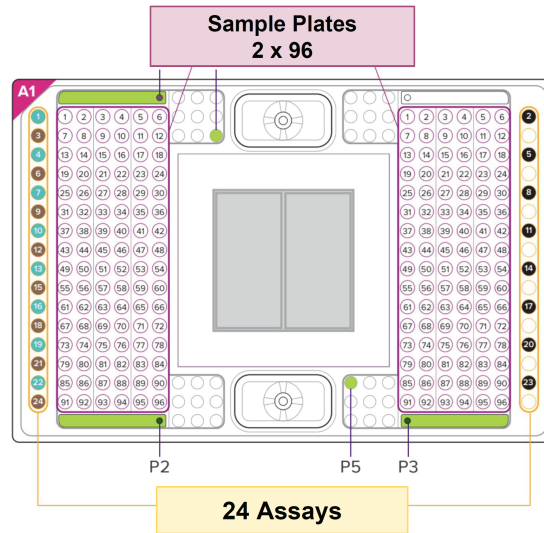
⁴Core Technology Platforms, New York University Abu Dhabi, Abu Dhabi, United Arab Emirates

⁵Proficiency Healthcare Diagnostics, Abu Dhabi, United Arab Emirates

⁶Department of Biology and Center for Genomics and Systems Biology, New York University, New York, NY, 10003, USA

#Correspondence: Youssef Idaghdour, youssef.idaghdour@nyu.edu, Kristin C. Gunsalus, kcg1@nyu.edu

A



192 Samples

- 2 x 96-well plates

24 Assays for each sample

- N1 x 9 replicates (virus)
- N2 x 9 replicates (virus)
- RP x 6 replicates (host)

B

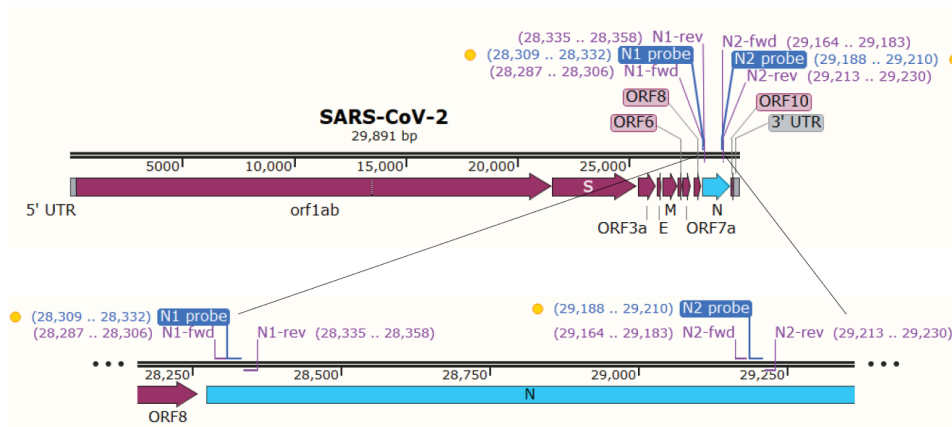


Figure S1. Fluidigm chip layout and N gene probes. (A) The 192x24 Fluidigm chip can analyze 192 samples (from two 96-well microtiter plates) against 24 assays. In our experimental design, each sample was analyzed with 9 replicates each of the N1 and N2 (viral N gene) assays and 6 replicates of the RP (human gene) assay. (B) Schematics showing the locations of the PCR primers and Taqman probes for the N1 and N2 assays on the SARS-CoV-2 genome.

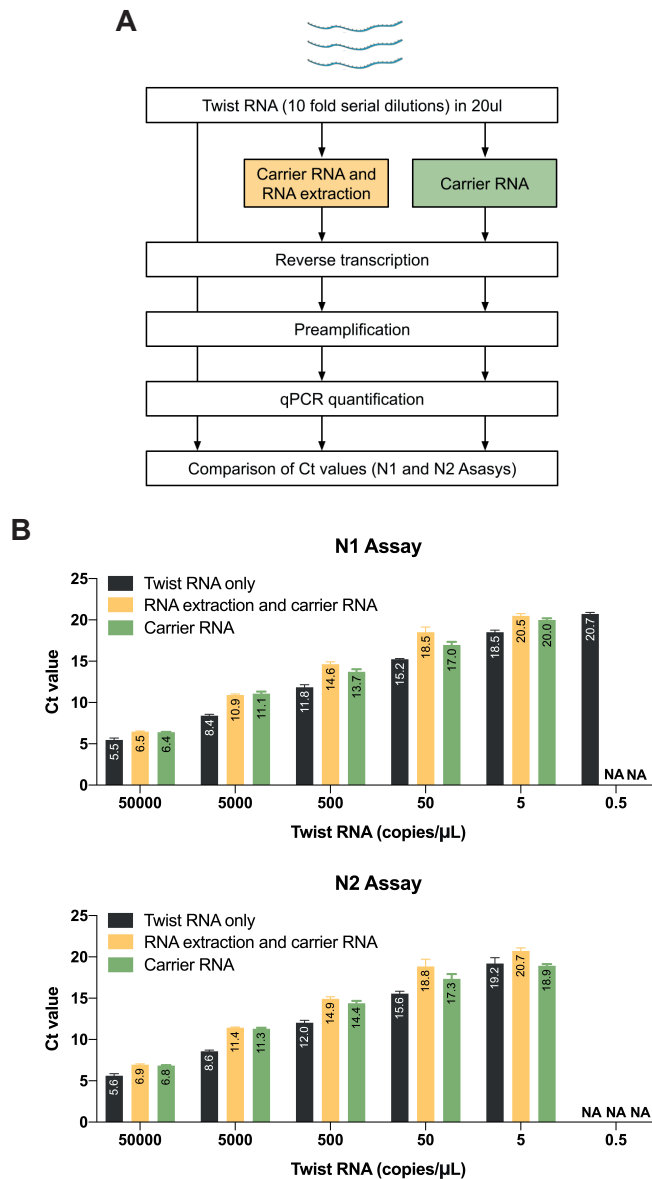


Figure S2. Detection limit with RNA extraction step and the effect of carrier RNA.

Workflow for the analysis of serially diluted Twist RNA only, Twist RNA with an RNA extraction step in presence of carrier RNA or Twist RNA with the direct addition of carrier RNA. Data show the mean \pm SD of valid Ct values from 18 replicates for each concentration (2 biological replicates with 9 technical replicates each).

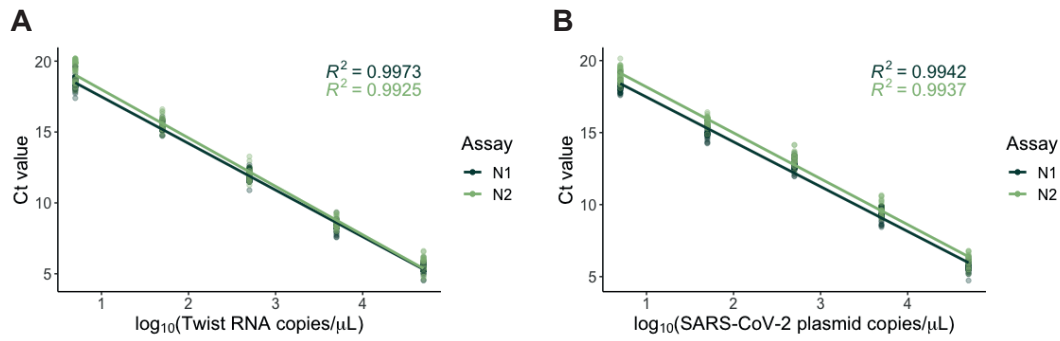


Figure S3. Linear regression of Ct values vs. copy number of serially diluted positive controls shows highly reproducible detection of SARS-CoV-2 across five orders of magnitude. Plots of Ct values vs. copy number of serially diluted positive controls show a strong log linear relationship ranging from 5 to 50,000 copies/μl for both N1 and N2 assays (with preamplification). (A) synthetic RNAs (Twist RNA) and (B) SARS-CoV-2 plasmid. Data points show 18 replicates at each concentration. R^2 , coefficient of variation.

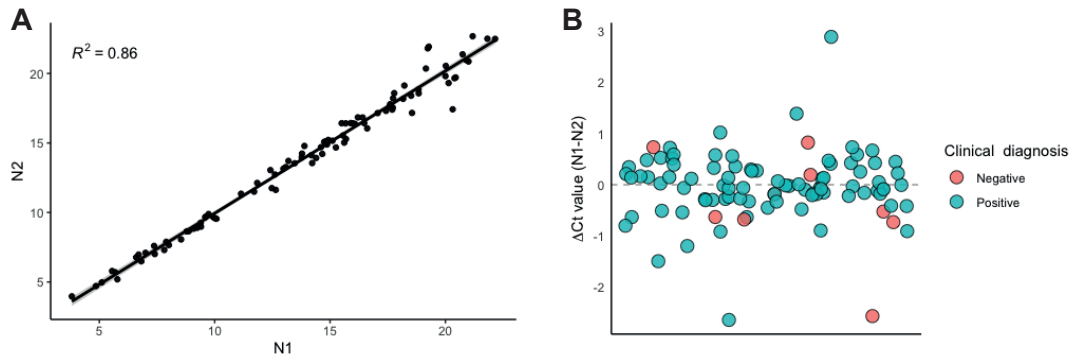


Figure S4. Comparison of detection performance between N1 and N2 assays. (A) Correlation between Ct values of the N1 and N2 assays ($R^2 = 0.86$, Kendall's rank correlation). (B) Scatter plot of the differences in Ct values between the N1 and N2 assays (ΔCt (N1-N2)) in the Pos_Pos and Neg_Pos samples.