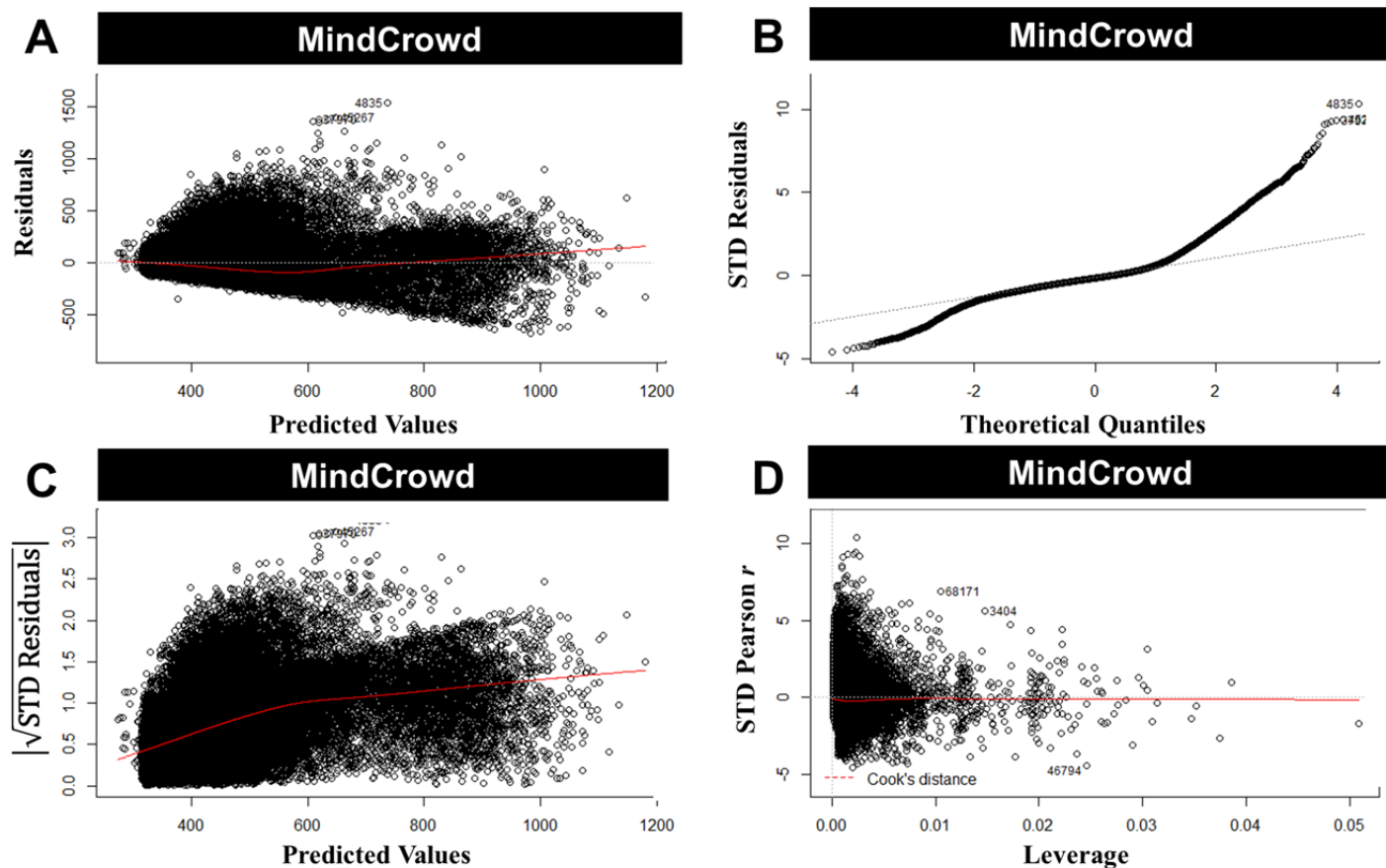
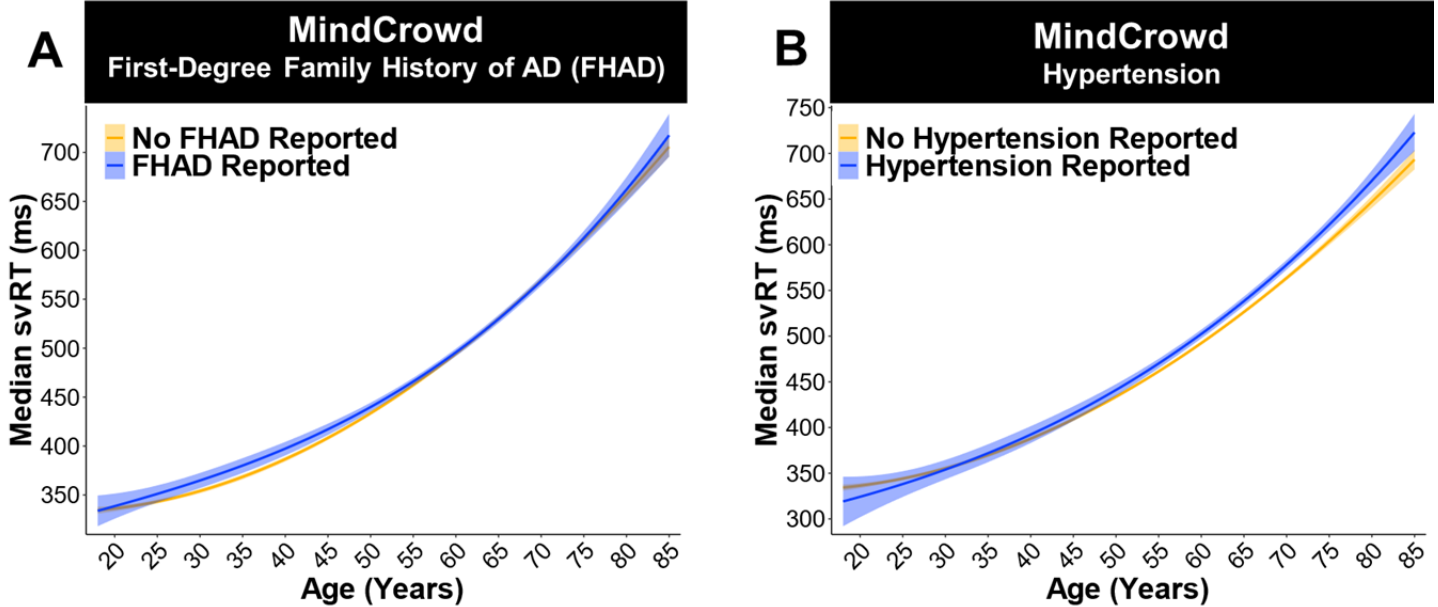


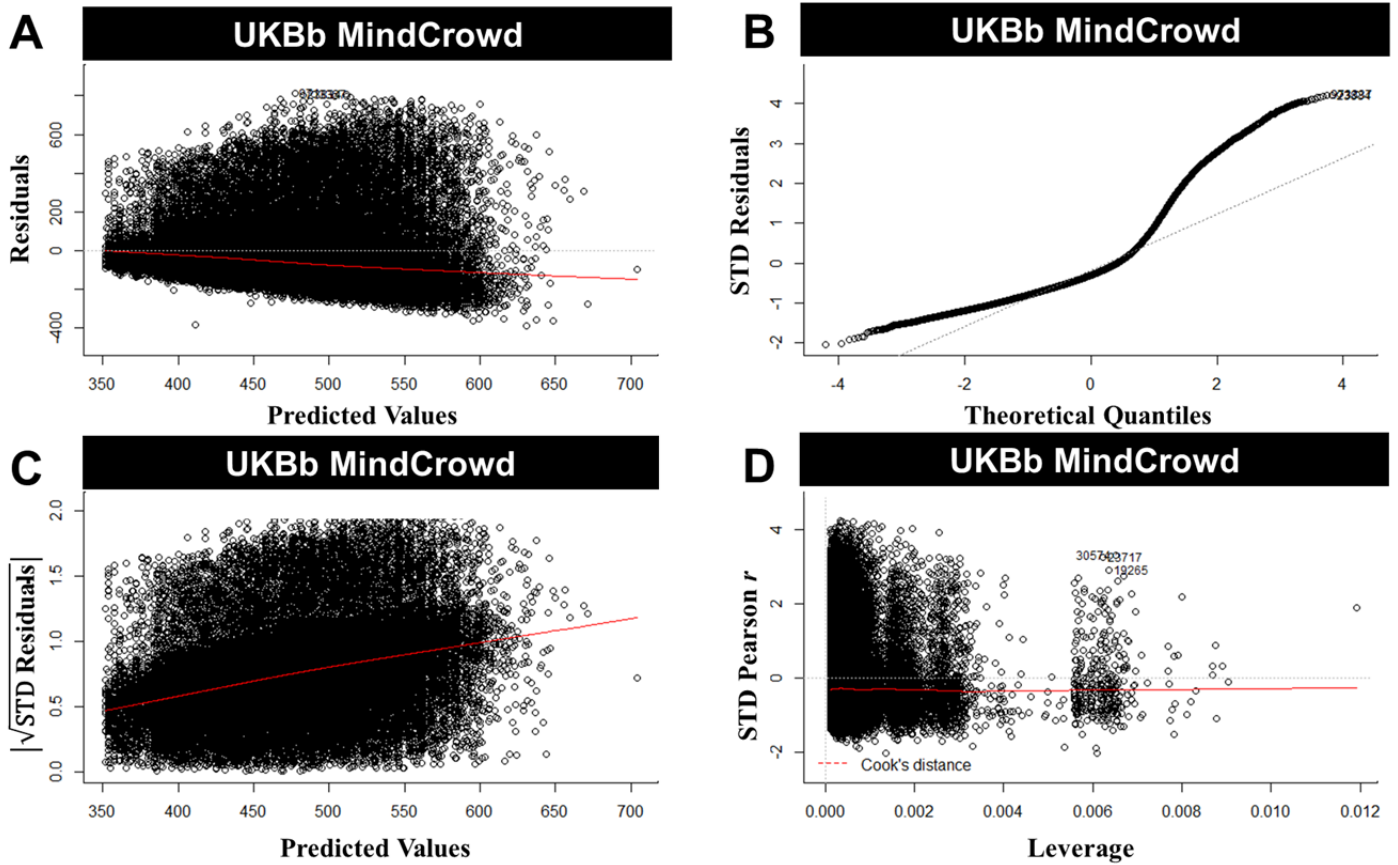
**Supplementary Figure 1.** Distribution of ages across MindCrowd and the UK Biobank. Histogram of age across a) MindCrowd (18-85 years,  $n=73,464$ ), b) UKBb MindCrowd (40-70 years,  $n=38,891$ ), and c) UK Biobank (40-70 years,  $n=157,933$ ) cohorts. Each bin is one year. These plots display the bimodal distribution of ages in the MindCrowd cohorts as well as the similar and relatively normal distribution of the UKBb MindCrowd and UK Biobank cohorts.



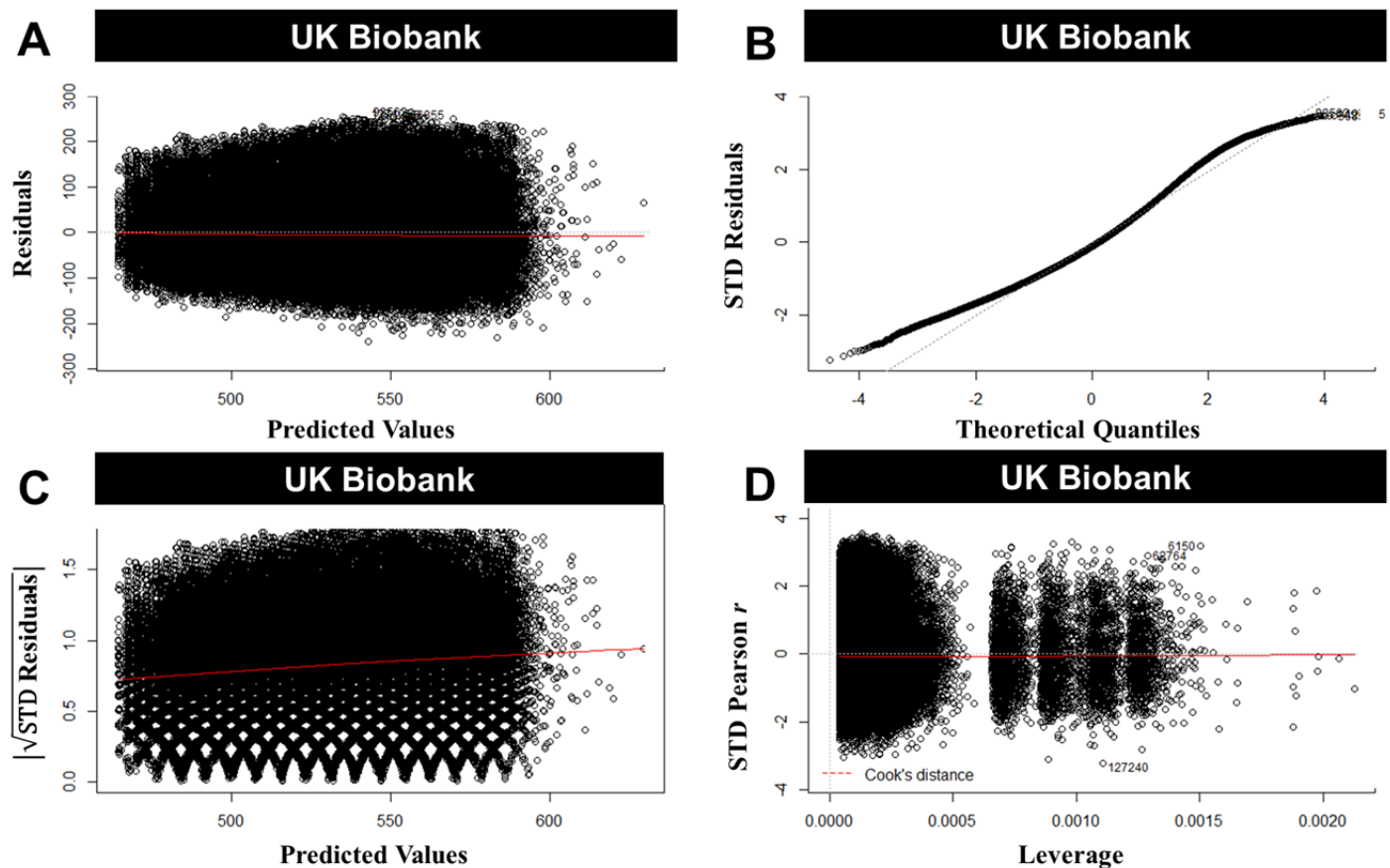
**Supplementary Figure 2.** Regression diagnostic plots of the general linear model (LM) for the MindCrowd analyses ( $n=73,464$ ). (A) A plot of the residuals versus fitted values. This plot suggests that the assumptions of linearity, equality of variances, and no outliers are met. (B) Q-Q plot displaying the quantiles of the data versus quantiles of a normal distribution. This plot suggests there is a violation from normality in residuals and thus the error terms; however, this violation should not cause major problems because of the large sample size. (C) A plot of the absolute value of the square root of the standardized (STD) residuals versus the fitted values. Like plot A, this plot suggests variability in residuals does not change much over the range of the dependent variable. (D) A plot of the residuals versus leverage. This plot indicates that there are no influential cases, as all cases fall within Cook's distance.



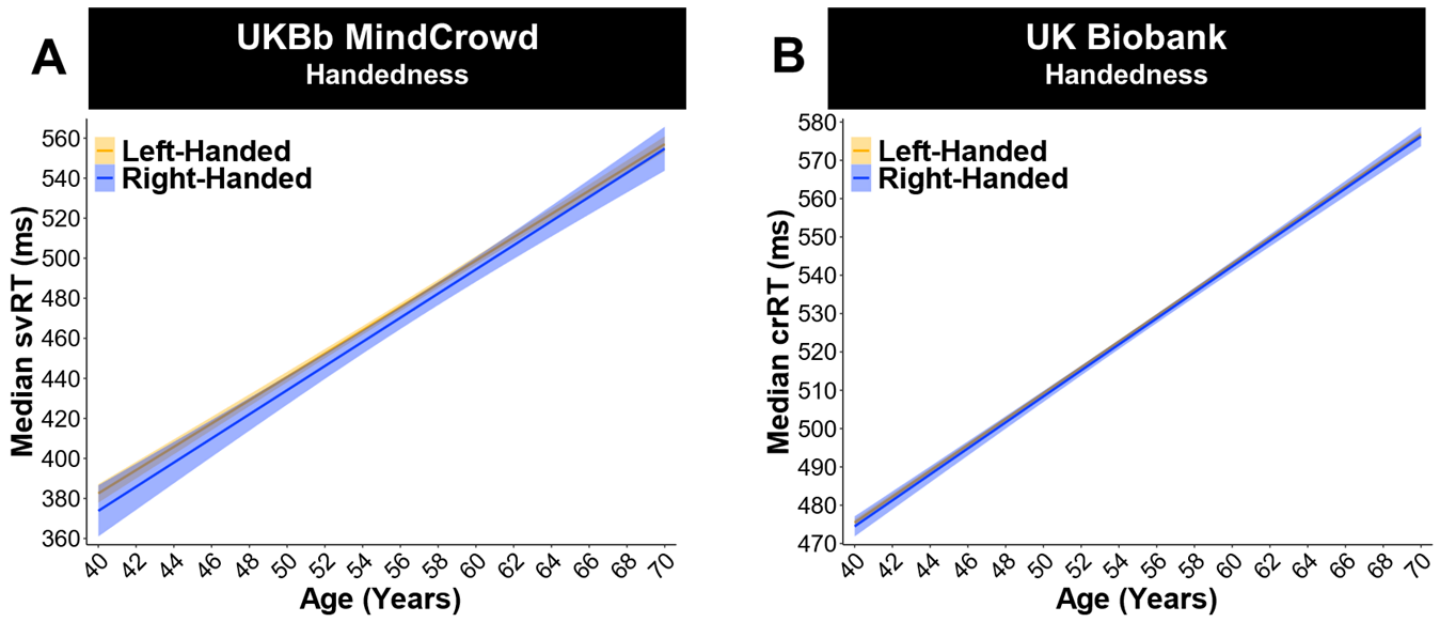
**Supplementary Figure 3.** MindCrowd: No relationship between a first-degree family history of Alzheimer's disease (FHAD) or Reported Hypertension and simple visual reaction time (svRT). (A) MindCrowd analysis (ages 18-85): Linear model fits (line fill  $\pm$  95% CI) of the median svRT across Age with lines split by FHAD. There was no relationship between FHAD and svRT ( $\beta_{FHAD}=-0.40$ ,  $p_{FHAD}=0.75$ , FHAD Reported  $n=17,847$ , No FHAD Reported  $n=57,819$ ). (B) Linear model fits (line fill  $\pm$  95% CI) of the median svRT across Age with lines split by Reported Hypertension. Hypertension was not related to svRT ( $\beta_{Hyper}=1.08$ ,  $p_{Hyper}=0.52$ , Hypertension Reported  $n=13,915$ , No Hypertension Reported  $n=61,751$ ).



**Supplementary Figure 4.** Regression diagnostic plots of the general linear model (LM) for the UKBb MindCrowd cohort ( $n=38,891$ ). (A) A plot of the residuals versus fitted values. This plot suggests that the assumptions of linearity, equality of variances, and no outliers are met. (B) Q-Q plot displaying the quantiles of the data versus quantiles of a normal distribution. This plot suggests there is a violation from normality in residuals and thus the error terms; however, this violation should not cause major problems because of the large sample size. (C) A plot of the absolute value of the square root of the standardized (STD) residuals versus the fitted values. Like plot A, this plot suggests variability in residuals does not change much over the range of the dependent variable. (D) A plot of the residuals versus leverage. This plot indicates that there are no influential cases, as all cases fall within Cook's distance.

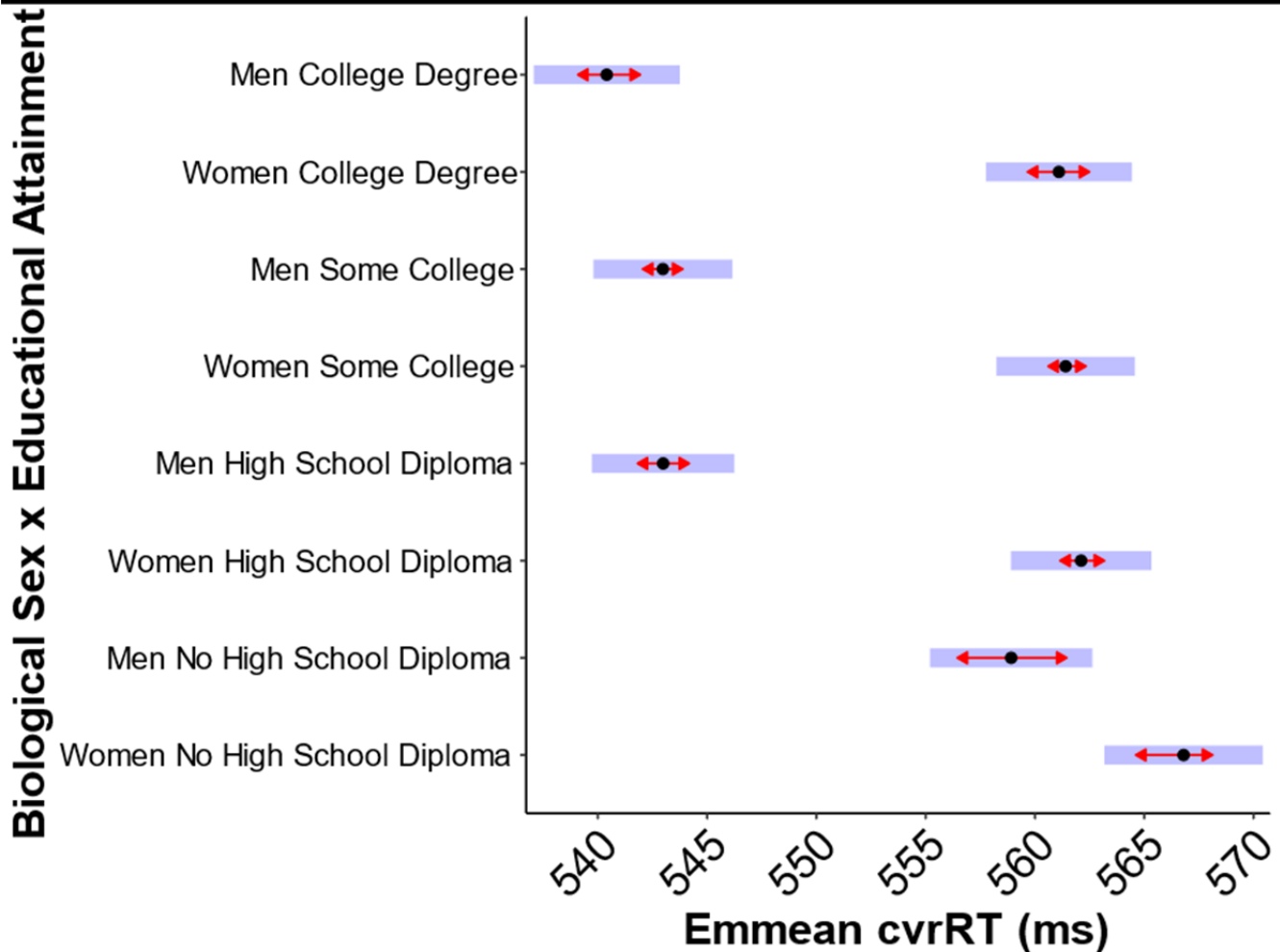


**Supplementary Figure 5.** Regression diagnostic plots of the general linear model (LM) for the UK Biobank analyses ( $n=157,933$ ). (A) A plot of the residuals versus fitted values. This plot suggests that the assumptions of linearity, equality of variances, and no outliers are met. (B) Q-Q plot displaying the quantiles of the data versus quantiles of a normal distribution. This plot suggests there is an approximately normal distribution of the residuals and, thus, the error terms. (C) A plot of the absolute value of the square root of the standardized (STD) residuals versus the fitted values. This plot suggests that variability in residuals does not change much over the range of the dependent variable. (D) A plot of the residuals versus leverage. This plot indicates that there are no influential cases, as all cases fall within Cook's distance.



**Supplementary Figure 6.** Handedness was not associated with reaction time (RT) in the UK Biobank analysis (ages 40-70). (A) Linear model fits (line fill  $\pm$  95% CI) of median simple visual RT (svRT). There was no relationship between reported handedness and svRT performance in the UKBb MindCrowd cohort. (B) Linear model fits (line fill  $\pm$  95% CI) of median complex, visual, recognition RT (cvtRT). For both the UKBb MindCrowd  $\beta_{\text{Handedness}}=-2.58$ ,  $p_{\text{Handedness}}=4.00\text{E-}01$ , Left-Handed  $n=4,520$ , Right-Handed  $n=35,034$ , and the UK Biobank ( $\beta_{\text{Handedness}}=0.58$ ,  $p_{\text{Handedness}}=0.36$ , Left-Handed  $n=15,287$ , Right-Handed  $n=142,958$ ), handedness was not related to cvtRT in the UK Biobank.

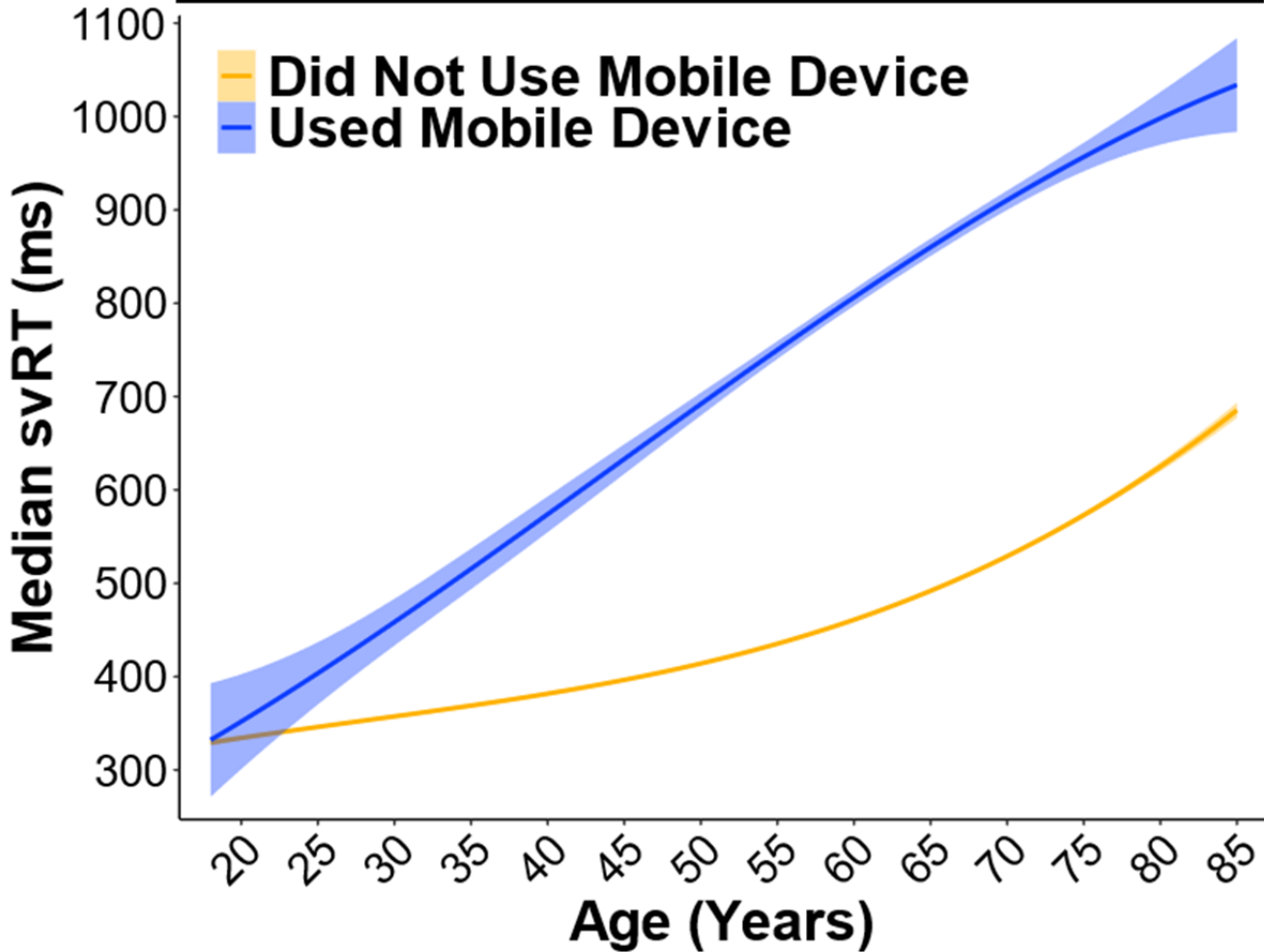
# UK Biobank Estimated Marginal Means (EMM)



**Supplementary Figure 7.** Men with the lowest educational attainment show dramatically slower complex, visual, recognition reaction time (cvrRT). UK Biobank analysis (ages 40-70). Median cvrRT estimated marginal means (*EMM*) in the UK Biobank for the Biological Sex x Educational Attainment interaction. Purple/Blue rectangles display the range of the 95% confidence interval around the *EMM*, and the red arrows denote probable statistical significance if the arrows do not cross. Simple effects analysis via *EMM* revealed that men who did not graduate high school (*EMM*=558.91 milliseconds), compared to men with more education (*EMMs*=542.99, 542.98, and 540.41 milliseconds), had markedly faster cvrRTs, more in line with the women's cvrRT performance (*EMMs*=566.80, 562.11, 561.40, and 561.09 milliseconds). In addition, the difference in cvrRT between men at the two lowest education milestones (*EMM*=558.91 vs. 542.99 milliseconds,  $\beta_{Men}=15.92$ ,  $p_{Men}=2.00E-16$ ,  $n=4,922$  and  $18,505$ , 2.89%), was greater than those same two lowest milestones in women (*EMM*=566.80 vs. 562.11 milliseconds,  $\beta_{Women}=4.68$ ,  $p_{Women}=3.12E-04$ ,  $n=6,056$  and  $27,742$ , 0.84%). See Figure 14 for the Educational Attainment line graphs split by Biological Sex.

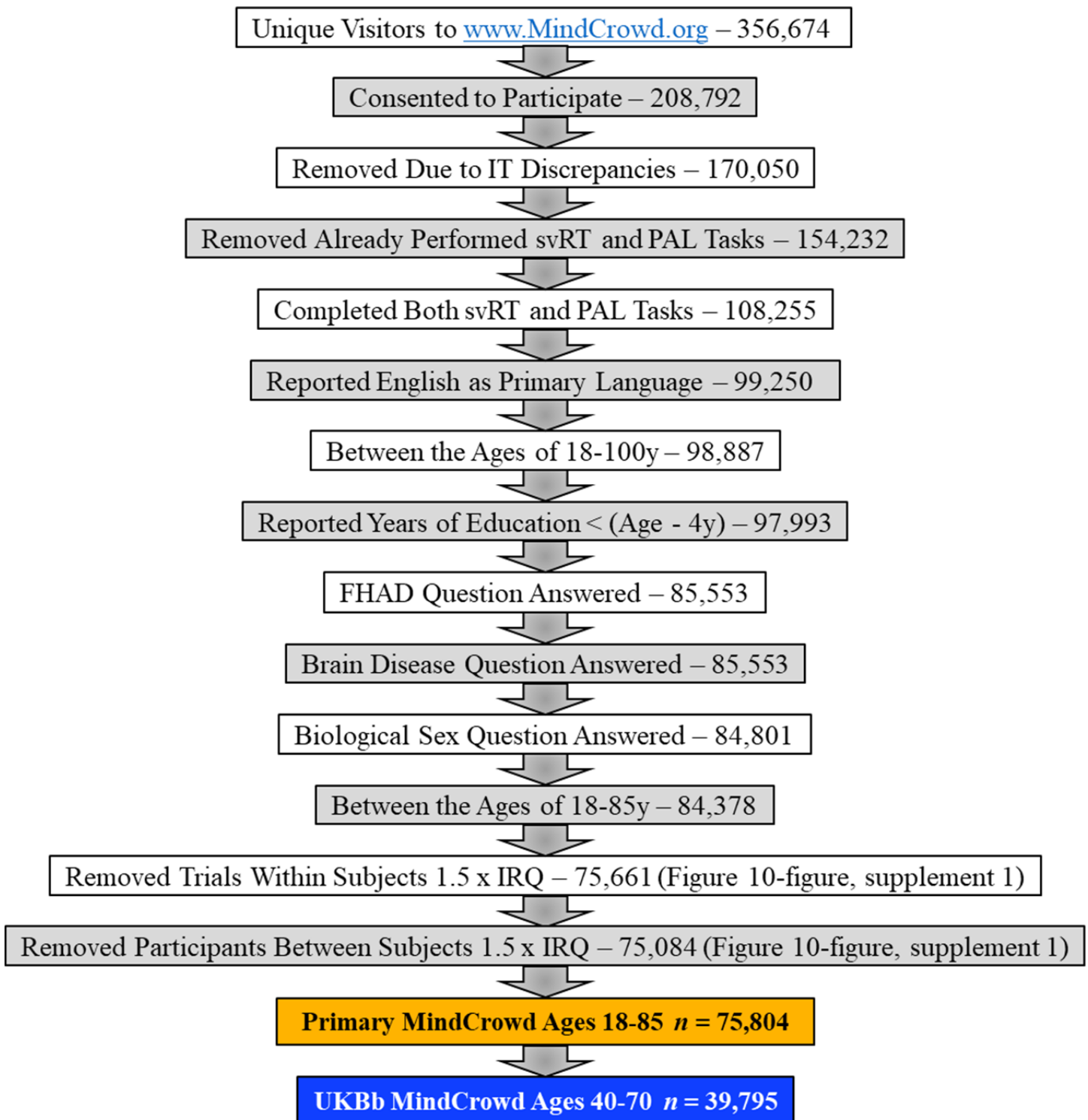
# MindCrowd

## Reaction Time Assessed on Mobile Device

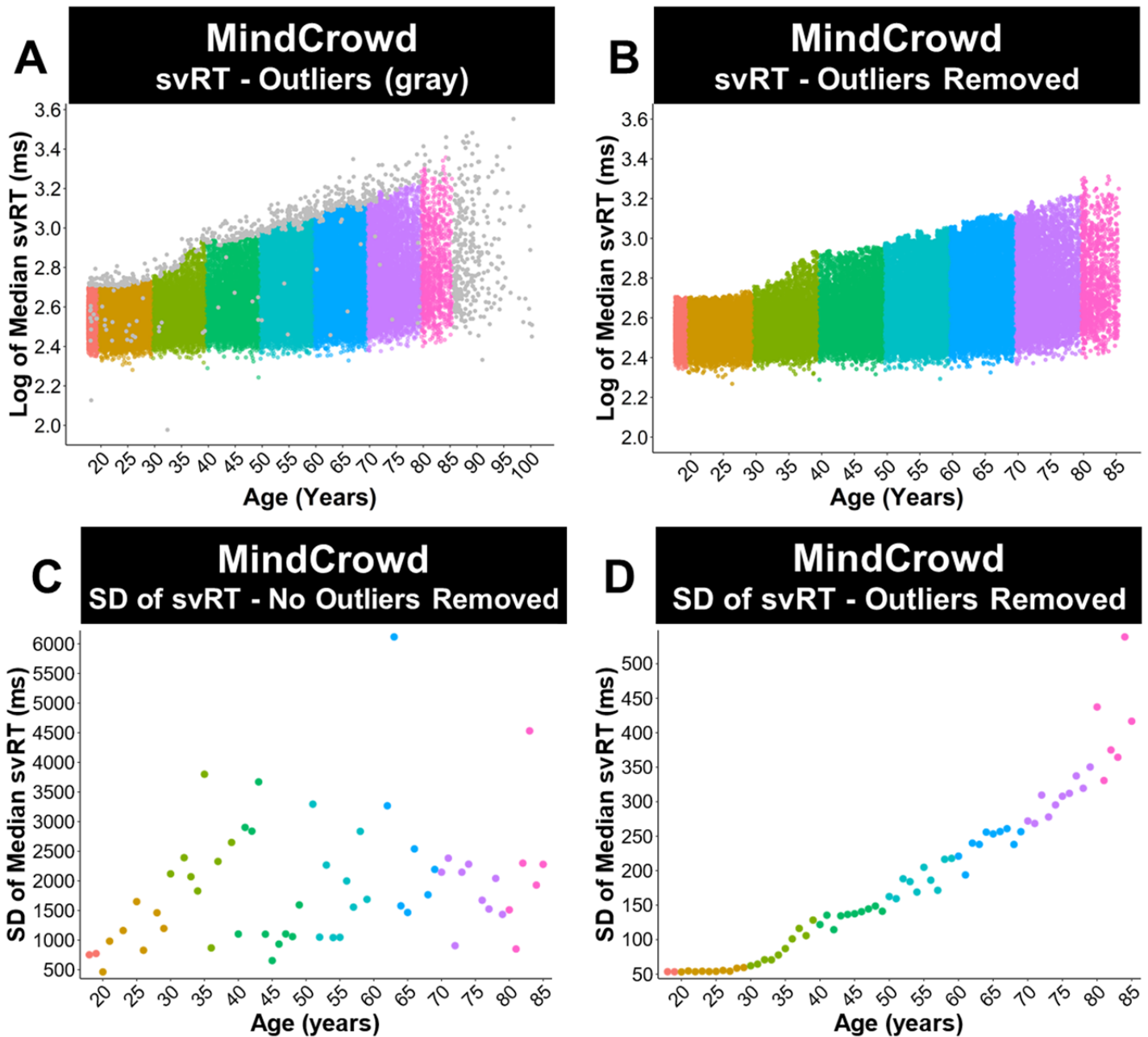


**Supplementary Figure 8.** Slower simple visual reaction time (svRT) when using a mobile device. MindCrowd analysis (ages 18-85): linear model fits (line fill  $\pm$  95% CI) of the median svRT by Age<sup>3</sup> (curvilinear model). Touch screen devices were related to markedly slower svRT performance across age ( $\beta_{Device}=322.30$ ,  $p_{Device}< 2e-16$ , Used Mobile Device  $n=4,253$ , Did Not Use Mobile Device  $n=71,413$ ). Participants were presented with a pink sphere that appeared at random intervals (between 1-10s) on the screen, and they were instructed to respond as quickly as possible after the sphere appeared by pressing the enter/return key on their keyboard. Once the participant responded, the sphere disappeared until the next trial. Each participant received a total of five trials. The sphere stayed on the screen until the participant responded. The dependent variable, response time (milliseconds), was recorded from the appearance of the sphere on the screen to the key/screen press made by the participant.





**Supplementary Figure 9.** Flowchart describing the data quality and control filtering steps, with associated change in  $n$  for each successive filtering step. This chart illustrates the primary filtering procedures used to help ensure data quality for MindCrowd's online evaluation and self-report.



**Supplementary Figure 10.** Identification of simple visual reaction time (svRT) outliers and the effects of their removal. (A) The distribution of median svRT by Age in the entire MindCrowd cohort ( $n=84,378$ ). This graph displays outliers ( $svRT \pm 1.5 \times \text{interquartile range } [IQR]$  and age  $> 85y$ ) shaded in gray. (B) A plot of the distribution of median svRT by Age once svRT outliers were removed ( $n=75,666$ ). (C) A plot of the standard deviation (SD) of median svRT by Age in the entire MindCrowd cohort with outliers ( $svRT \pm 1.5 \times IQR$ ) present. (D) Graph of the SD of median svRT by Age in the MindCrowd cohort once outliers were removed. This graph illustrates the apparent effect that outliers lying above or below  $1.5 \times IQR$  has on the variation in the data.

Table 6

*Key Resources*

Reagent Type, Species, or Resource	Designation	Source Reference	or	Identifiers	Additional Information
Software, algorithm	R	The R Foundation		Version 4.0.0 RRID:SCR_001905	
Software, algorithm	R package, tidyverse	Comprehensive R Archive Network (CRAN)		Version 1.3.0 RRID:SCR_014601: for ggplot2	
Software, algorithm	R package, glmulti	Comprehensive R Archive Network (CRAN)		Version 1.0.7.1	
Software, algorithm	R package, interactions	Comprehensive R Archive Network (CRAN)		Version 1.1.3	
Software, algorithm	R package, sandwich	Comprehensive R Archive Network (CRAN)		Version 2.5-1	
Software, algorithm	R package, jtools	Comprehensive R Archive Network (CRAN)		Version 2.0.5	
Software, algorithm	R package, emmeans	Comprehensive R Archive Network (CRAN)		Version 1.4.6	
Software, algorithm	R package, mcddata	Private GitHub Repository		Version 1.1.0	Private R package to load and manipulate data from the MindCrowd database.

**Supplementary Table 1.** Key Resources. Table displaying critical reagents, software, and other items used in this study.