

Figure 1: 95% quantile-based intervals and median estimates for daily new hospitalizations and daily new deaths. Left, middle and right columns correspond to Scenarios 1, 2, and 3, respectively. Black dots represent available data from March 11 to May 31.

### 1 S3 Possible consequences of lifting mitigation measures

2 Fig. 3 shows possible consequences in the number of daily new cases, hospitalizations and deaths,  
 3 when different proportions of individuals are released on June 01 (Following the idea of Figure 7,  
 4 presented in the main document). Here, the X value considered in Scenarios 1 and 3 correspond  
 5 to 12.5% and 24.91%, respectively. Observe that Scenario 1 is very similar to Scenario 2 (detailed  
 6 in the main document), in the sense that an increment on the release of individuals implies an  
 7 increase on the ACME level. Clearly, this does not occur for Scenario 3 (Fig. 3), where there is  
 8 no apparent change in the magnitude of the ACME, when different amount of people is released  
 9 from the protected class. This is mainly due to the median values considered in Scenario 3, for the  
 10 transmission contact rates in the protected and protected released ( $\tilde{\alpha}_a$  and  $\hat{\alpha}_a$ , respectively) classes  
 11 (Table 4 in main document), which are practically the same. In this sense, there is no difference  
 12 between the protected and the protected released class in this infection process. In summary, this  
 13 analysis shows that data can be explained by different processes, that depend on the values of the  
 14 parameters, and also illustrates the difficulty of selecting the best scenario to fit the data, since more  
 15 information is needed to reasonably choose model parameter values.

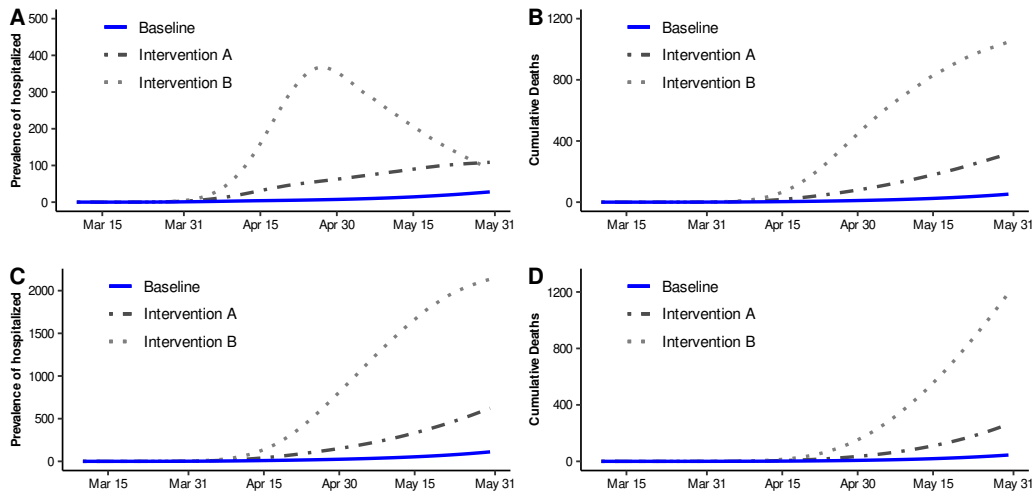


Figure 2: Median estimates for prevalence and cumulative deaths. Blue solid line represents our baseline dynamics. Dotted-dashed line represents intervention A, that is, mitigation measures start on March 23. Dotted line represents intervention B, that is, mitigation measures start on March 30. First and second rows correspond to Scenarios 1 and 3, respectively.

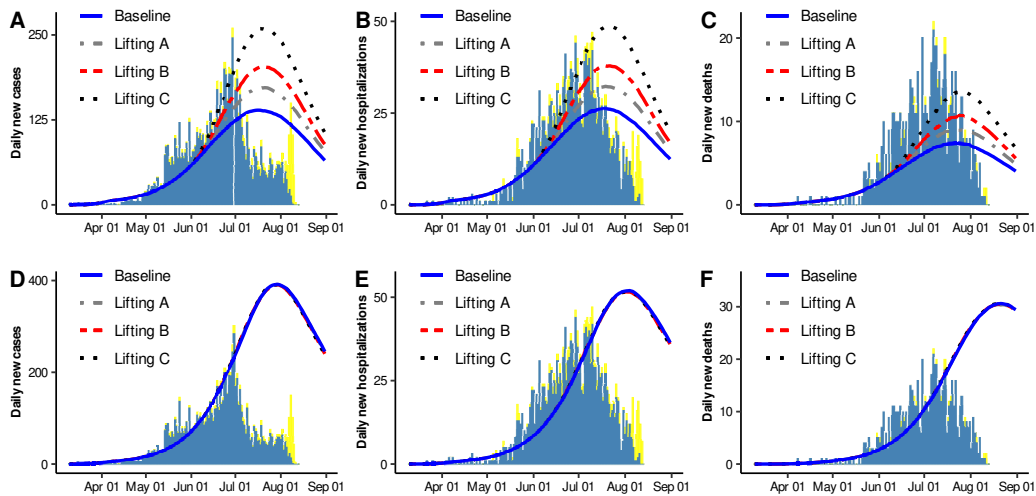


Figure 3: Median estimates for daily new cases, daily new hospitalizations, and daily new deaths. Blue solid line represents our baseline dynamics. Grey dotted-dashed, red dashed and black dotted lines represent that approximately  $X\%$ ,  $2X\%$ , and  $4X\%$  of the population that fulfilled social distance measures returned to their usual activities on June 01, 2020, respectively.  $X$  values are given by each scenario. First and second rows correspond to Scenarios 1 and 3, respectively. Blue and yellow bars represent confirmed and suspected+confirmed data for Hermosillo, Sonora, Mexico.