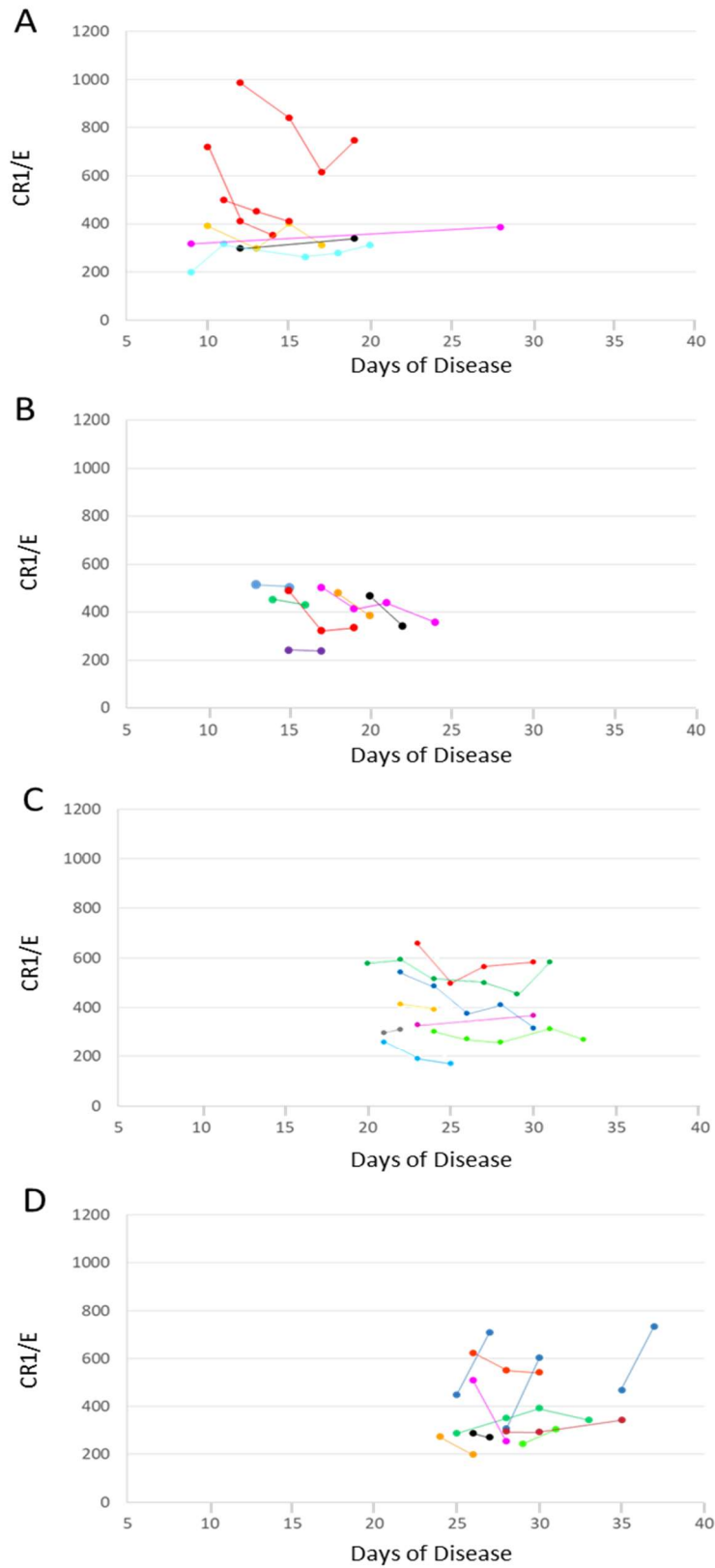
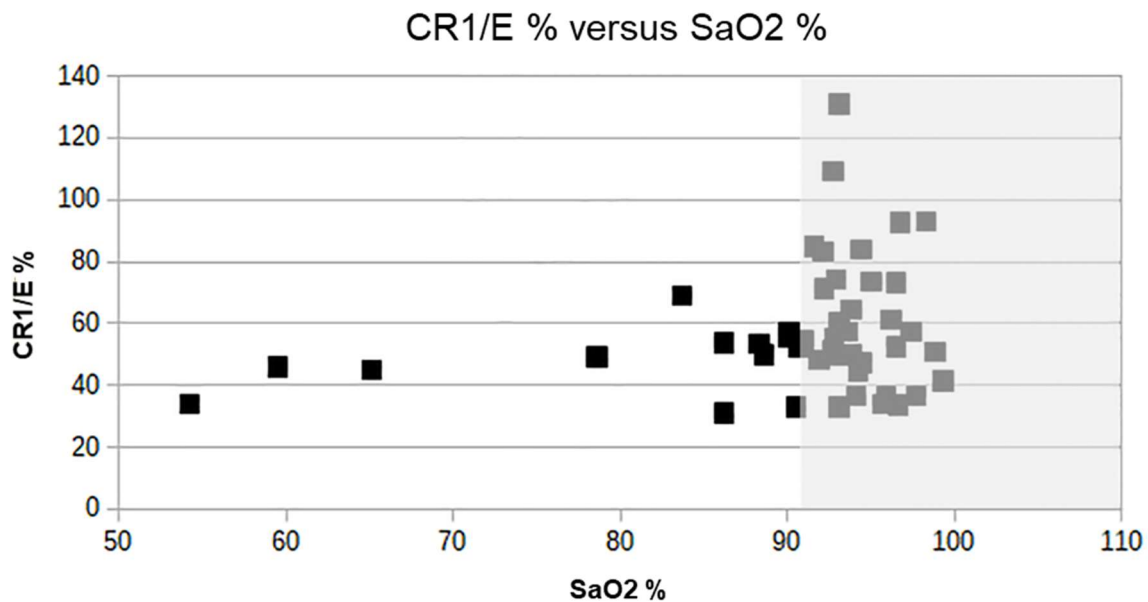


Supplemental Figure 1. CR1/E density in COVID-19 patients according to days of disease. A, B, C, D, CR1/E density patient followed-up were plotted with their longitudinal profile according to days of disease from the onset of symptoms in A, B, C, D chronological sub-figures for the sake of clarity.



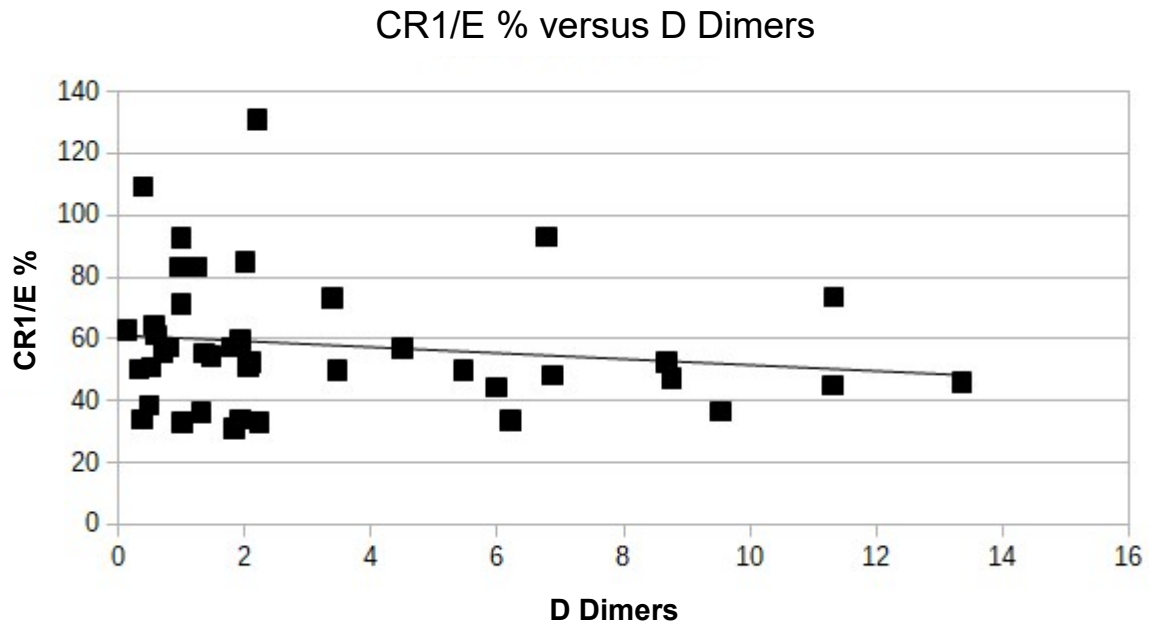
Supplemental material Figure 1

Supplemental Figure 2. CR1/E density according to the arterial SaO2 decrease. The CR1/E density is expressed as percentage of the CR1/E value predicted by the RS11118133 density genotype of the patient (CR1/E %). Mean decrease of CR1 for SaO2 under O2 (either optiflow or assisted ventilation) lower than 91 % was mean 49 % SD10 N14 versus mean 62 % SD10 N32 for SaO2 values above 91 % ($p=0.007$ Welch Two Sample t-Test). The lowest SaO2 value reached despite maximal O2 assistance was plotted against the CR1/E % at the first testing of each patient. Grey shadow SaO2 above 91%. CR1/E values above 100 % originated either from the presence of reticulocytes which express 20 000 more CR1 than E, or from a preferential destruction of old E in some haemolysis such as in septicemia.



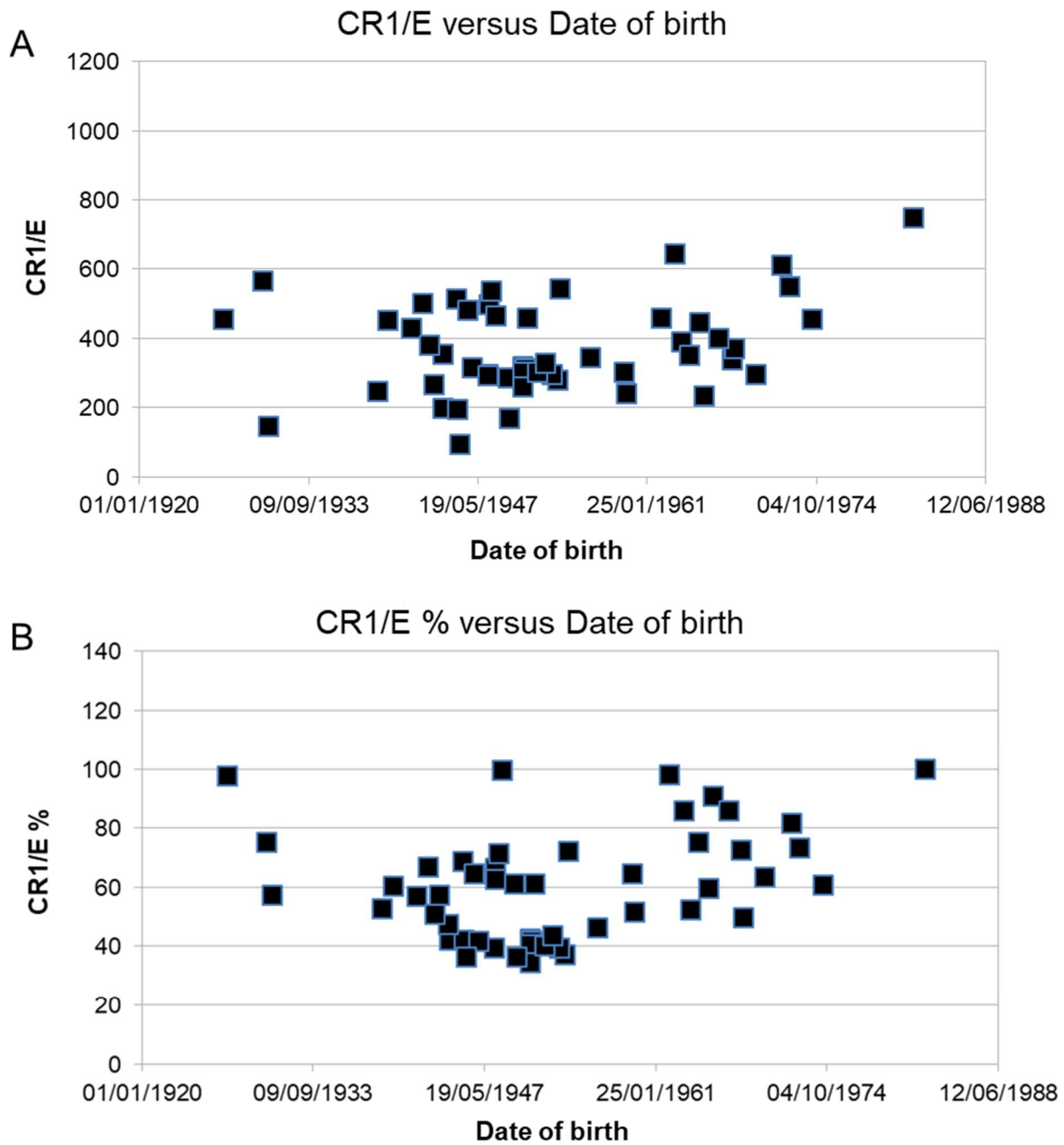
Supplemental material Figure 2

Supplemental Figure 3. CR1/E density according to the level of D Dimers. CR1/E density is expressed as percentage of the CR1/E value predicted by the RS11118133 density genotype of the patient (CR1/E %).



Supplemental material Figure 3

Supplemental Figure 4. CR1/E density according to the dates of birth of the patients. A, The lowest measurement of CR1/E only was plotted for each patient according to the dates of birth. **B,** The CR1/E density is expressed as percentage of the CR1/E value predicted by the RS11118133 density genotype of the patient (CR1/E %). Four patients didn't exhibited an acquired decrease of CR1/E below the density predicted by their genotypes.

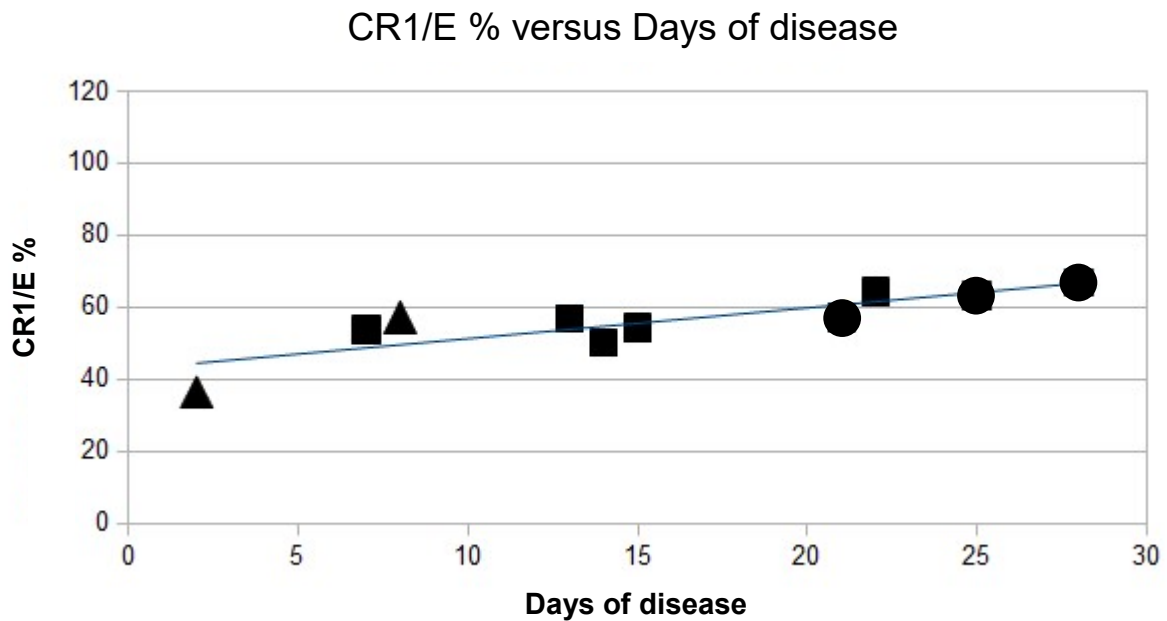


Supplemental material Figure 4

Supplemental Figure 5. CR1/E density among deceased patients according to the duration of the disease, from the day of symptoms to the day of blood collection. CR1/E were expressed as percentages of the mean CR1/E density expected from the RS11118133 density genotype of a given individual (CR1/E %).

Triangle: homozygous LL low density genotype. Circle: heterozygous HL medium density genotype. Square: homozygous HH high density genotype.

Among the 10 deceased patients, with globally low CR1/E values, the earlier in the disease the CR1/E was assessed, the lower were the CR1/E values. The equation of the line obtained is $f(x) = 0,856 x + 42,80$ $R^2 = 0,696$.



Supplemental material Figure 5