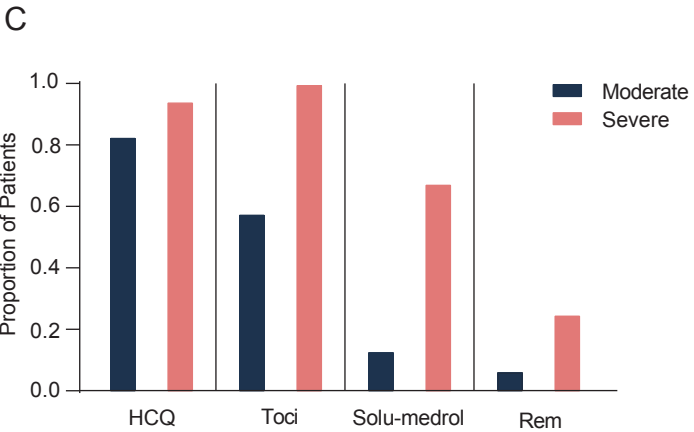
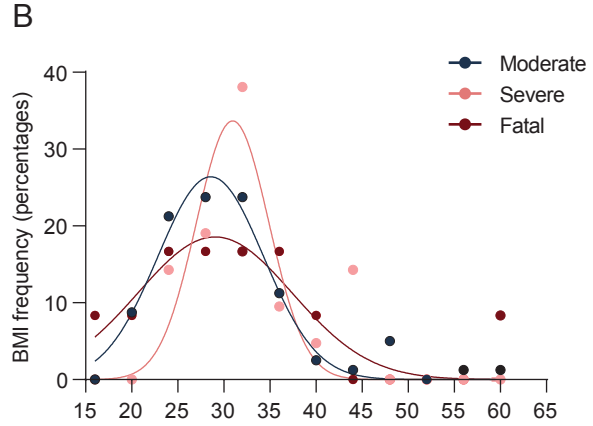
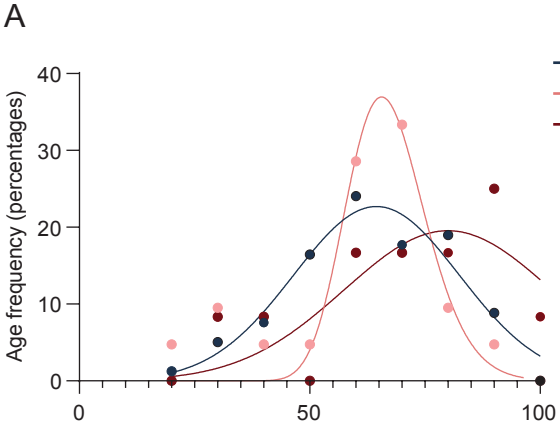


Extended data Fig1: Age and BMI cohort distributions and Select Medications distribution



D

Changes in IL-6, according to tocilizumab, after controlling, age, ICU admission and days from symptom onset, accounting for multiple observations per person (GEE).

Covariate	Coefficient	95% CI
Tocilizumab	0.55	0.07, 1.04
ICU admission	0.48	-0.02, 0.99
Days from symptom onset	-0.02	-0.04, -0.003
Age	0.01	0.0003, 0.02

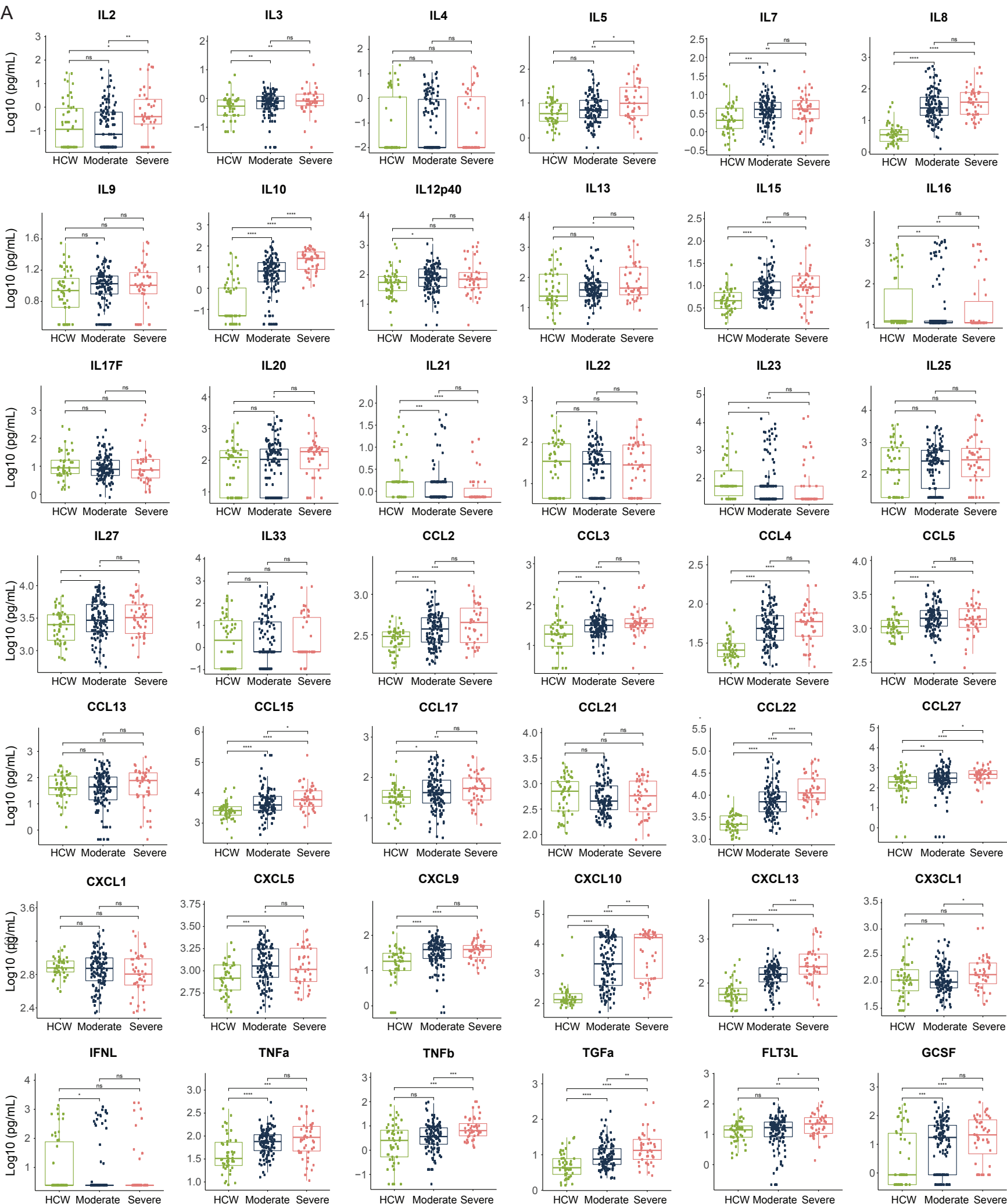
This analysis excludes two individuals whose IL-6 was measured before receiving tocilizumab.

Changes in T cell count, according to age, ICU admission and days from symptom onset, accounting for multiple observations per person (GEE).

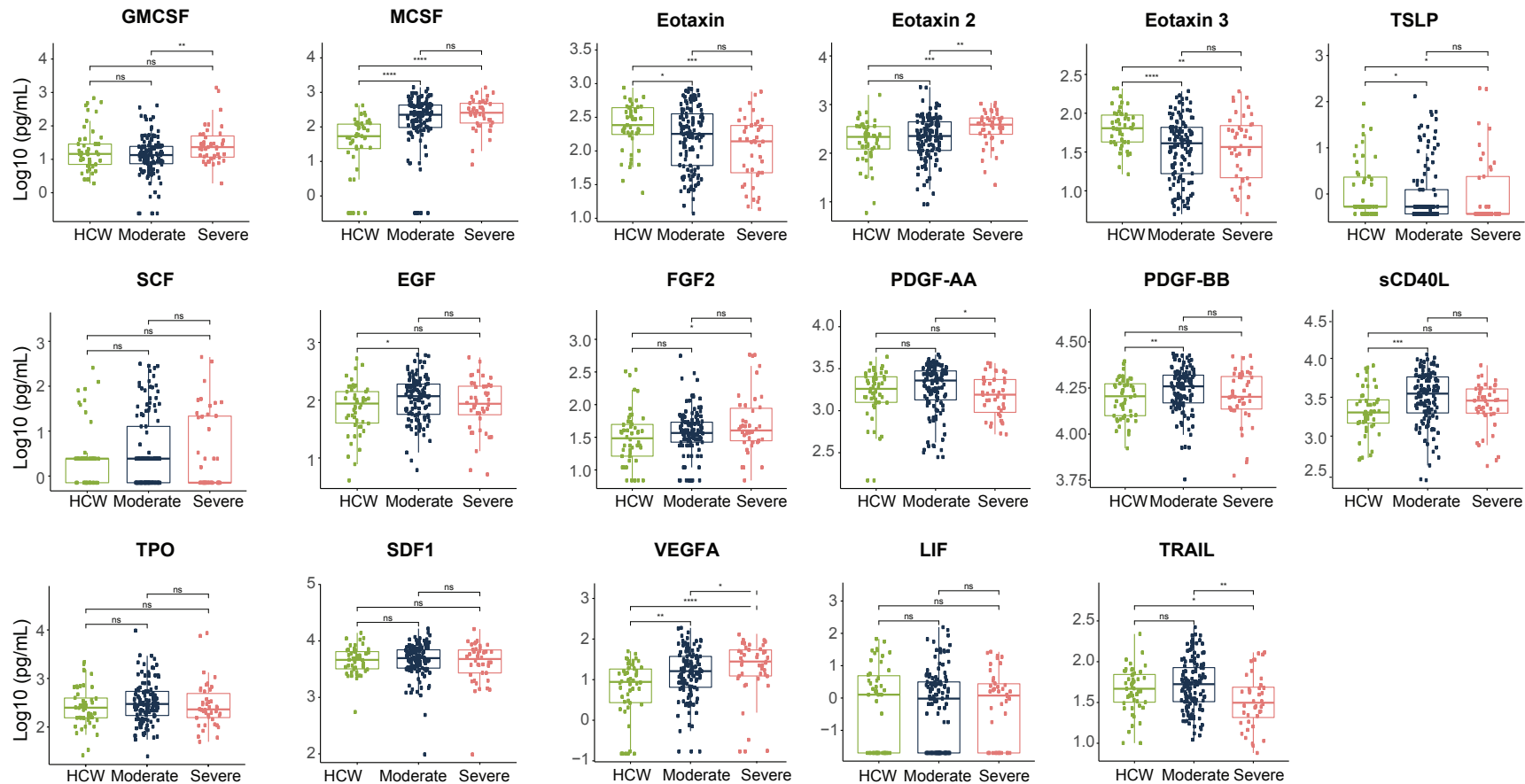
Covariate	Coefficient	95% CI
ICU admission	-13.43	-19.32, -7.55
Days from symptom onset	-0.15	-0.41, 0.11
Age	-0.16	-0.33, 0.02

Extended Data Fig3: Overview of cytokine and chemokine profiles of COVID-19 patients

A



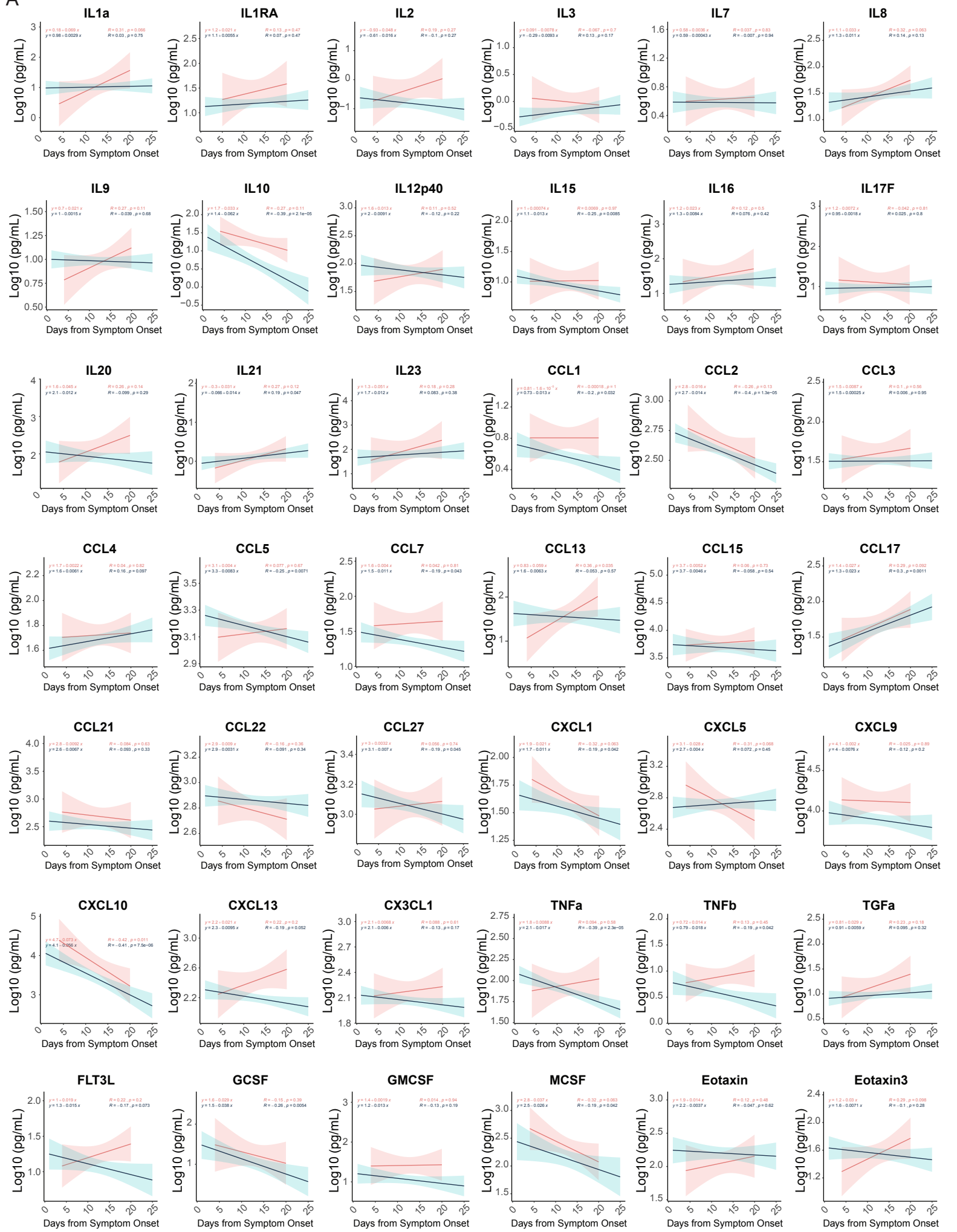
Extended Data Fig3: Overview of cytokine and chemokine profiles of COVID-19 patients

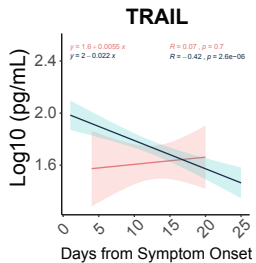
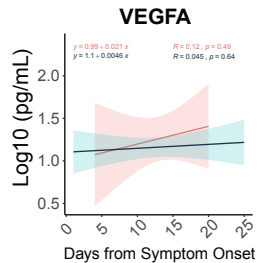
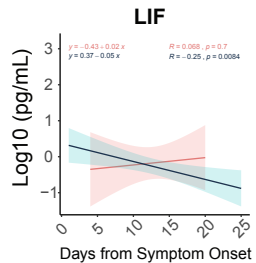
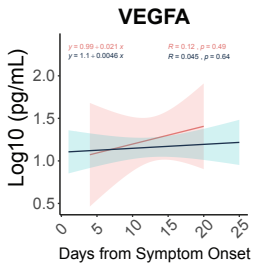
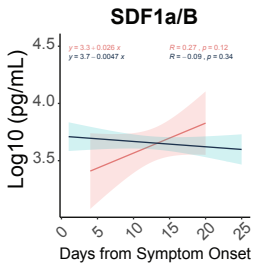
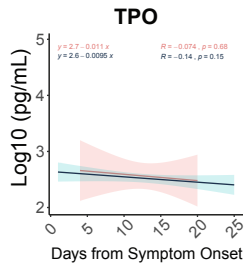
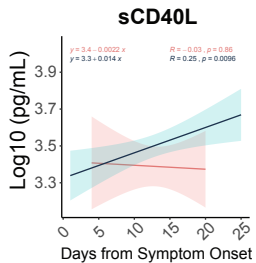
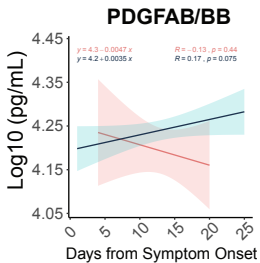
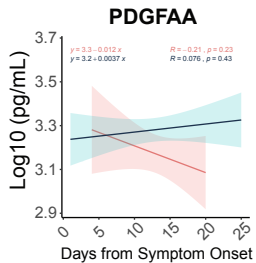
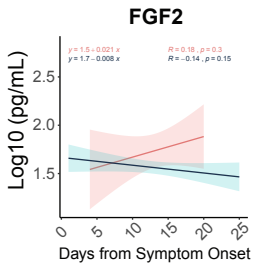
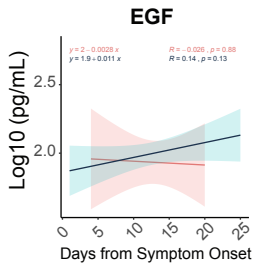
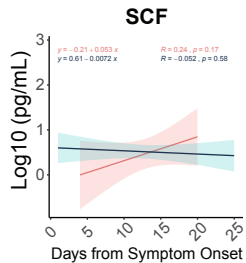


Extendend Data Fig 4: Longitudinal cytokine and chemokine profiles in COVID-19 patients

— Severe
— Moderate

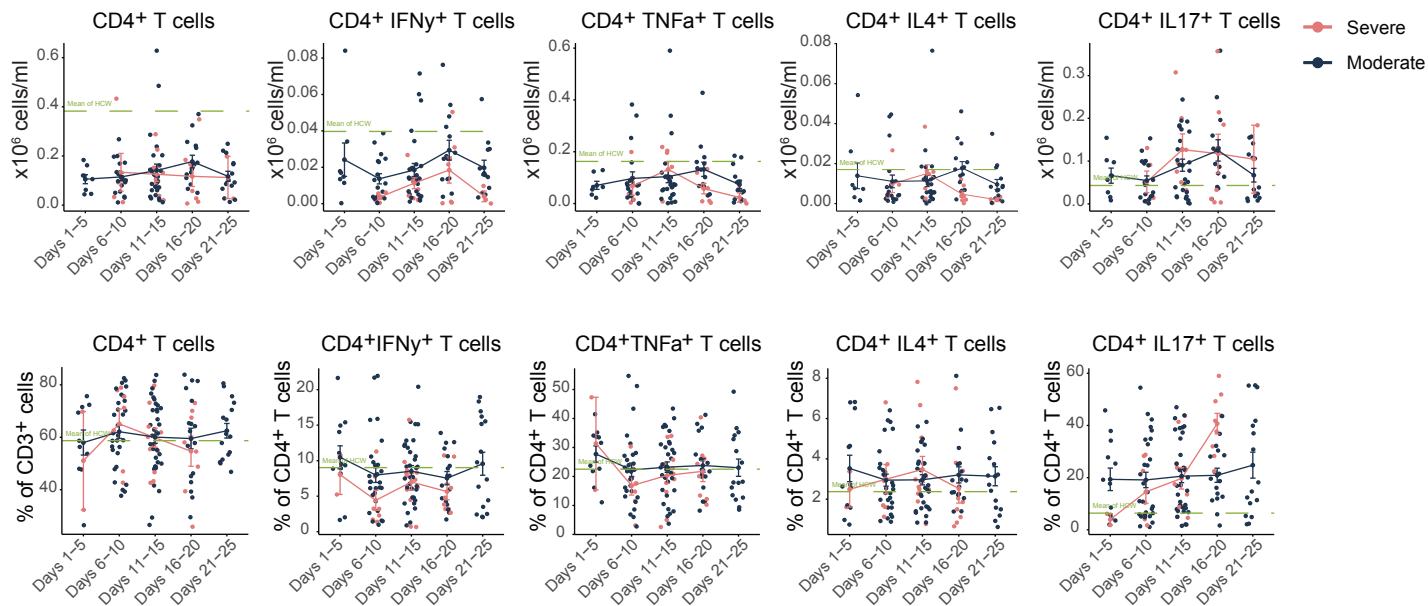
A



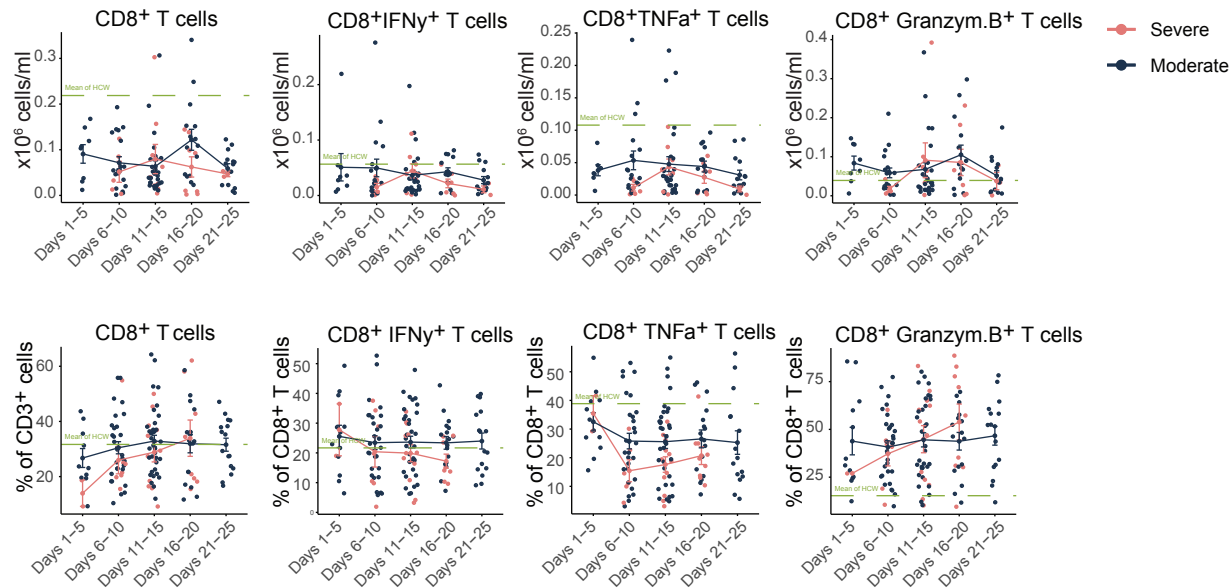


Extended Data Fig.5: T cell immune profile in moderate vs. severe patients

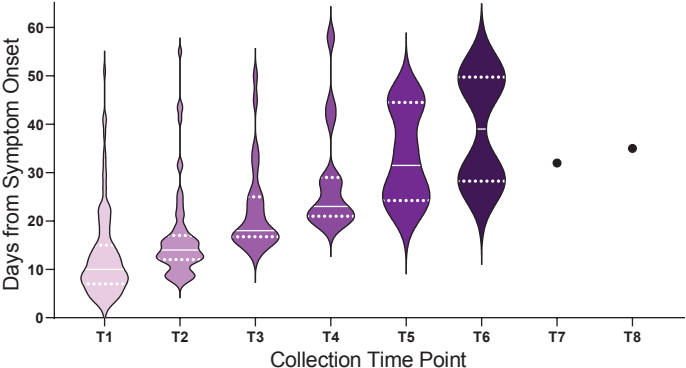
A



B



Extended Data Fig 7: Distribution of days from symptom onset stratified by collection time point



Extended Data Fig 8: Risk of death according to biomarkers levels

Risk of death:

