

Supplementary appendix

Supplement to: Model-based spatial-temporal mapping of opisthorchiasis in endemic countries of Southeast Asia

Contents

Appendix 1. Study protocol	4
Appendix 2. Covariate layers and processing of covariate data	6
2.1 Covariate layers.....	6
Supplementary Table 1: Covariate layers used in the present study and data sources	6
2.2 Processing of covariate data	7
2.3 Environmental, socioeconomic, and demographic data layers used in the present study	8
Supplementary Figure 1: Images of spatial covariates used in the present study.....	8
Appendix 3. Variable selection, model validation and a test for preferential sampling	9
3.1 Variable selection process.....	9
Supplementary Table 2: Variable selection results	9
3.2 Model validation	9
Supplementary Table 3: Results of model validation for the Bayesian geostatistical joint model and the model only based on point-referenced data	10
Supplementary Figure 2: ROC curves and AUCs of model validation.	10
3.3 A test for preferential sampling	11
Supplementary Figure 3: A test for preferential sampling in four study time periods.	11
Appendix 4. Model-based population-adjusted estimated prevalence	13
4.1 Population-adjusted estimated prevalence at country level for each study period	13
Supplementary Table 4: Estimated prevalence in different periods in Southeast Asia (median & 95% BCI).....	13
4.2 Population-adjusted estimated prevalence at administrative division of level one.....	14
Supplementary Figure 4-1: The population-adjusted estimated prevalence (median±95% BCI) in Cambodia at administrative division of level one.	14
Supplementary Figure 4-2: The population-adjusted estimated prevalence (median±95% BCI) in Laos at administrative division of level one.....	15
Supplementary Figure 4-3: The population-adjusted estimated prevalence (median±95% BCI) in Thailand at administrative division of level one.	16
Supplementary Figure 4-4: The population-adjusted estimated prevalence (median±95% BCI) in Vietnam at administrative division of level one.	17
Appendix 5. Sensitivity analysis	18
5.1 Sensitivity analysis for imputation of missing data with unknown number of examined	18
Supplementary Table 5: Posterior summaries (median and 95% Bayesian credible intervals) of the geostatistical model parameters under different values assigned to the number of examined for surveys with the corresponding missing data.....	18
Supplementary Table 5 (continue): Posterior summaries (median and 95% Bayesian credible intervals) of the geostatistical model parameters under different values assigned to the number of examined for surveys with the corresponding missing data.....	19
Supplementary Figure 5: Model-based estimated risk maps of <i>O. viverrini</i> infection from 2010 onwards under different values assigned to the number of examined for surveys with the corresponding missing data.....	20
5.2 Sensitivity analysis for surveys reported prevalence in intervals	21
Supplementary Table 6: Posterior summaries (median and 95% Bayesian credible intervals) of the geostatistical model parameters under different values assigned to prevalence for surveys only	

reported prevalence in intervals	21
Supplementary Figure 6: Model-based estimated risk maps of <i>O. viverrini</i> infection from 2010 onwards under different values assigned to prevalence for surveys only reported prevalence in intervals.....	22
Appendix 6. Quality assessment of eligible studies.....	23
Supplementary Figure 7: Result of quality assessment.....	23
Supplementary Table 7: Quality assessment for eligible literatures.....	23
Appendix 7. GATHER checklist of information that should be included in reports of global health estimates	41
Appendix 8. PRISMA 2009 Checklist.....	43

Appendix 1. Study protocol

Literature search

-Peer-review via PubMed, ISI Web of Science with the following keywords: (liver fluke* OR Opisthorchi*) AND (Southeast Asia OR Indonesia OR (Myanmar OR Burma) OR Thailand OR Vietnam OR Malaysia OR Philippines OR Laos OR Cambodia OR Timor OR Brunei OR Singapore). All references are merged in one reference database using EndNote X9.2 (Thomson ResearchSoft Ltd.).

-Google: general check for large disease database and other papers not included in the search engines.

Identification of potentially relevant publications

-Duplicates publications are checked and removed.

-Screen titles and abstracts to identify potential relevant articles.

Exclusion criteria 1: Publications on in vitro studies, or absence of human studies or absence of disease studies.

Quality control

Quality control is undertaken by re-checking 20% of randomly selected irrelevant papers.

Review of the potentially relevant publications

-Full-text review to identify potentially relevant articles.

Exclusion criteria 2: Exclusion criteria 1 plus publications with absence of prevalence data, researches on specific patient group (eg, prevalence on patients with specific diseases) or specific population group (eg, travelers, military personnel, expatriates, nomads, displaced or migrating population), researches with specific study designs (eg, case report studies, case-control studies, clinical trials, autopsy studies), or publications on drug efficacy or intervention studies (except for baseline data or control groups), or data with population deworming within one year, or the survey time interval more than 10 years, or data only based on the direct smear method (due to low sensitivity) or serum diagnostics (due to unable to differ the past and the active infection).

Inclusion criteria: Studies were included if they reported survey data at administrative division (ADM) of level one (ADM1, eg, province and state) or levels below (ADM2, eg, city, and ADM3, eg, county), or at point level (eg, village and school). -During full text review, the potential relevant cited references of the articles are also screened.

Geolocation

The coordinates of the survey sites were obtained from the corresponding publications or from Google Maps (<https://www.google.com/maps/>) if they are not provided by the corresponding publications.

Prevalence data extraction

-Detailed information of the selected literatures are extracted, including literature information (eg, journal, authors, publication date, title, volume and issue), survey information (eg, survey type, survey time), location information (eg, location names, location types, coordinates) and opisthorchiasis data (eg, diagnostic method, population type and age, numbers of examined, positive and percentage of positive).

-Considering the false positive rate of ELISA and the false negative rate of direct smear, data using

these two diagnostic methods are not included in final analysis.
-All extracted data are double-checked again to remove duplicates.

Contact authors

Authors of publications are contacted in case important information is missing (eg, prevalence, number of examined, number of positive, survey year).

Quality assessment

The quality assessment of each literature is undertaken using a nine-point checklist. The items of quality evaluation are as follows:

Q1: provide specific inclusion and exclusion criteria.

Q2: provide basic characteristics of the investigated population (gender, age, etc.).

Q3: provide prevalence rate of the survey.

Q4: provide number of positive patients and number of examined people of the survey.

Q5: provide diagnostic method used in the survey.

Q6: provide survey type.

Q7: provide time of the survey.

Q8: describe or discuss the possible bias of the survey or how confounders are controlled.

Q9: the literature comes from Science Citation Index Expanded database.

Each item is scored 1 in case the publication meets) or 0 in contrary. The scores are summed up for all items and assigned to the publication as its quality score.

Data process and analysis

-Data process for disease data.

As areas are much smaller of ADM2 and ADM3 than that of ADM1, surveys aggregated in ADM2 or ADM3 are treated as point-level data georeferenced at division centroids, while surveys aggregated over ADM1 are as area-level data, in order to avoid large uncertainty in the later geostatistical analysis.

-Data downloaded and process for environmental, socioeconomic data.

-Missing data imputation.

If survey year is missing, we assign year=public year minus three as survey year.

For surveys only reported prevalence without numbers of examined, sample size $n=50$ is assigned to surveys at point-referenced level, while sample size $n=500$ is assigned to surveys aggregated at areal-level.

For surveys reported prevalence in intervals without exact observed values, the medians of the intervals were assigned.

-Geostatistical analysis.

A Bayesian geostatistical joint modeling approach is applied to analyze together areal-level and point-referenced survey data

Sensitivity analysis is undertaken to evaluate the effects of missing data imputation.

Appendix 2. Covariate layers and processing of covariate data

2.1 Covariate layers

There are several kinds of environmental, socioeconomic, and demographic data used in the present study.

The sources are given in Supplementary Table 1.

Supplementary Table 1: Covariate layers used in the present study and data sources^a

Data type	Source	Data period	Temporal resolution	Spatial resolution
NDVI ⁱ	MODIS/Terra ^b	2000-2016	16 days	1 km
LST ^j	MODIS/Terra ^b	2000-2013	8 days	1 km
Land cover	MODIS/Terra ^b	2001-2013	Yearly	1 km
Annual precipitation	WorldClim ^c	1960-1990	-	1 km
Elevation	SRTM ^d	2000	-	1 km
Water bodies	SWBD ^e	2000	-	30 m
Travel time to the nearest big city	MAP ^f	2015	-	1 km
HII ^k	SEDAC ^g	1995-2004	-	1 km
Population data	SEDAC ^g	2015	-	5 km
Population growth rate ^l	UN ^h	-	-	Country-level

^aData accessed in January 2019

^bModerate Resolution Imaging Spectroradiometer (MODIS) /Terra, available at: <https://lpdaac.usgs.gov/>.

^cAvailable at: <http://www.worldclim.org/current/>.

^dShuttle Radar Topography Mission (SRTM), available at: <https://www2.jpl.nasa.gov/srtm/>.

^eShuttle Radar Topography Mission Water Body Data (SWBD), available at: <http://gis.ess.washington.edu/data/vector/worldshore/index.html/>.

^fD.J. Weiss, A. Nelson, et al. A global map of travel time to cities to assess inequalities in accessibility in 2015. *Nature* (2018). doi:10.1038/nature25181, available at: https://map.ox.ac.uk/research-project/accessibility_to_cities/.

^gSocioeconomic Data and Applications Center, available at: <http://sedac.ciesin.org/>.

^hUnited Nations, available at: <https://population.un.org/wpp/Download/Standard/Population/>.

ⁱNormalized difference vegetation index.

^jLand surface temperature in the daytime and at night.

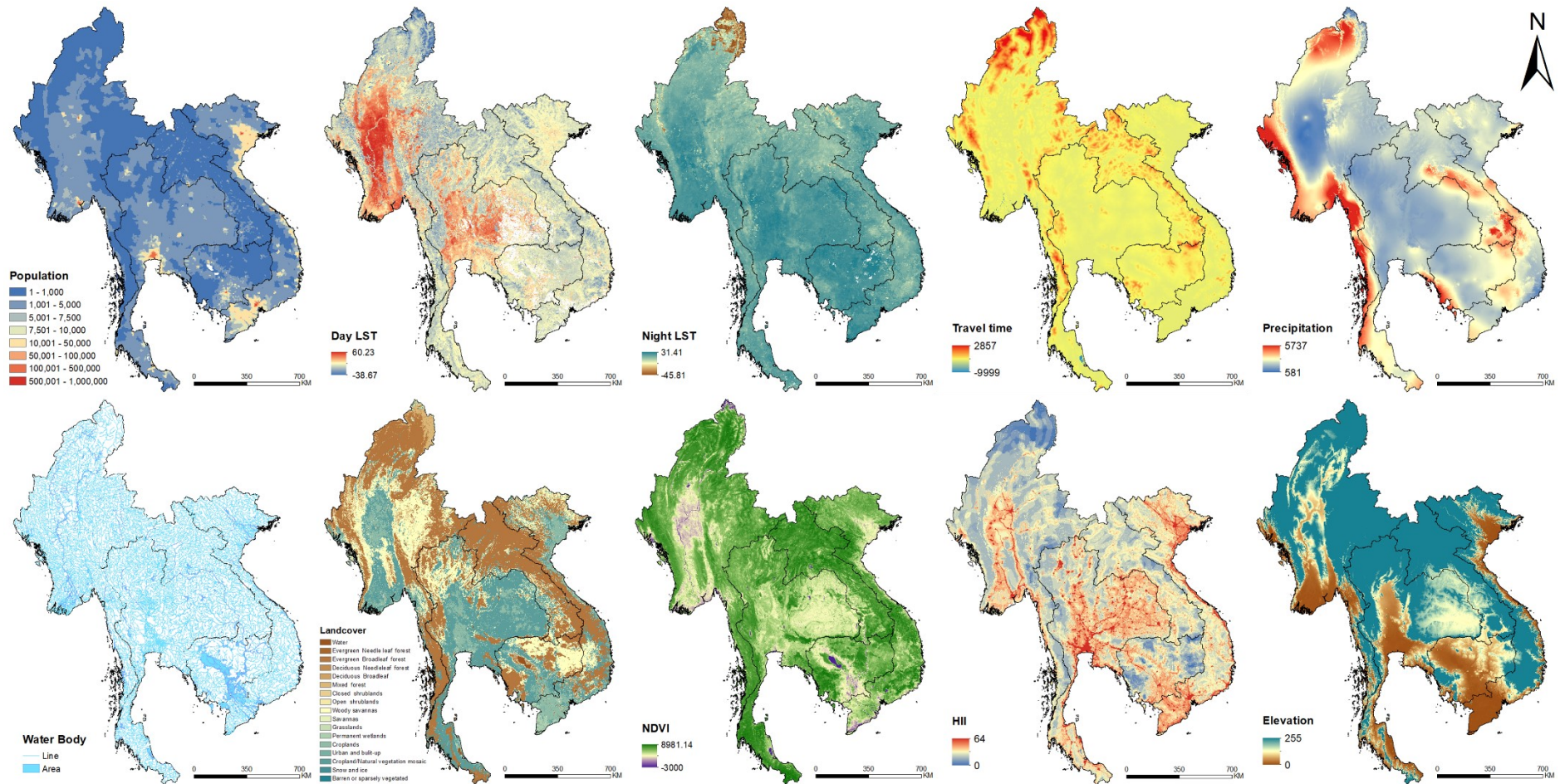
^kHuman influence index.

^lThis rate was used to project the gridded population of 2015 to 2018 specified by each country with formula $P_{2018} = P_{2015} * e^{T*rate}$.

2.2 Processing of covariate data

Land cover data was summarized by the most frequent category within each pixel over the period of 2001-2013. We combined similar land cover classes and re-grouped them into five categories: (i) Croplands; (ii) Forests; (iii) Shrub and grass; (iv) Urban; (v) Others. Land surface temperature (LST) in the daytime and at night were averaged over the period of 2000-2013, while normalized difference vegetation index (NDVI) were averaged over the period of 2000-2016. All data were aligned over a 5×5 km grid across the study region. Data at point-referenced survey locations were extracted. We linked the data to the divisions (ie, ADM1, ADM2 or ADM3) reported aggregated outcome of interest (ie, infection prevalence) by averaging them within the corresponding divisions. The above data processing was done using the package “raster” (<https://cran.r-project.org/web/packages/raster>) through R (version 3.5.0).

2.3 Environmental, socioeconomic, and demographic data layers used in the present study



Supplementary Figure 1: Images of spatial covariates used in the present study

Appendix 3. Variable selection, model validation and a test for preferential sampling

3.1 Variable selection process

We applied variable selection procedure to identify the best set of predictors for a parsimonious model. Firstly, the best functional form (continuous or categorical) of continuous variables was selected, by fitting univariate Bayesian spatial-temporal models with either form as the independent variable and selecting the form with the lowest log score (*Petit,1990*). Secondly, the best subset method was used to identify the best combination of predictors for the final model. Set that the number of covariates considered in the Bayesian variable selection process is n , then 2^n-1 alternative models are generated with all possible combinations of the predictors. According to previous studies(*Aung, et al.,2017; Forrer, et al.,2012; Miyamoto, et al.,2014; Van De,2004; Wongsaroj, et al.,2014*), the infection risk in community and school may be different, thus the survey type (ie, community- or school-based) was kept in all potential models, while the other ten environmental and socioeconomic variables were put forth into the Bayesian variable selection process. The model with the minimum log score was chosen as the final model. This variable selection process was conducted through INLA-SPDE approach, using integrated nested Laplace approximation (INLA) package in R (version 3.5.0).

Supplementary Table 2: Variable selection results

Form	The initial variables		Type selection	The final variables selection
	Variables	Type		
Categorical	Survey type	Binary variable	Selected	Selected
	Land cover	Polytomous variable	Selected	-
Continuous	Travel time to the nearest big city	Continuous variable	-	-
		Categorical variable	Selected	Selected
	Land surface temperature in the daytime	Continuous variable	-	-
		Categorical variable	Selected	-
	Land surface temperature at night	Continuous variable	Selected	-
		Categorical variable	-	-
	NDVI	Continuous variable	-	-
		Categorical variable	Selected	-
	Elevation	Continuous variable	-	-
		Categorical variable	Selected	-
	Human influence index	Continuous variable	Selected	Selected
		Categorical variable	-	-
	Distance to the nearest open water bodies	Continuous variable	-	-
Categorical variable		Selected	Selected	
Annual precipitation	Continuous variable	Selected	Selected	
	Categorical variable	-	-	

3.2 Model validation

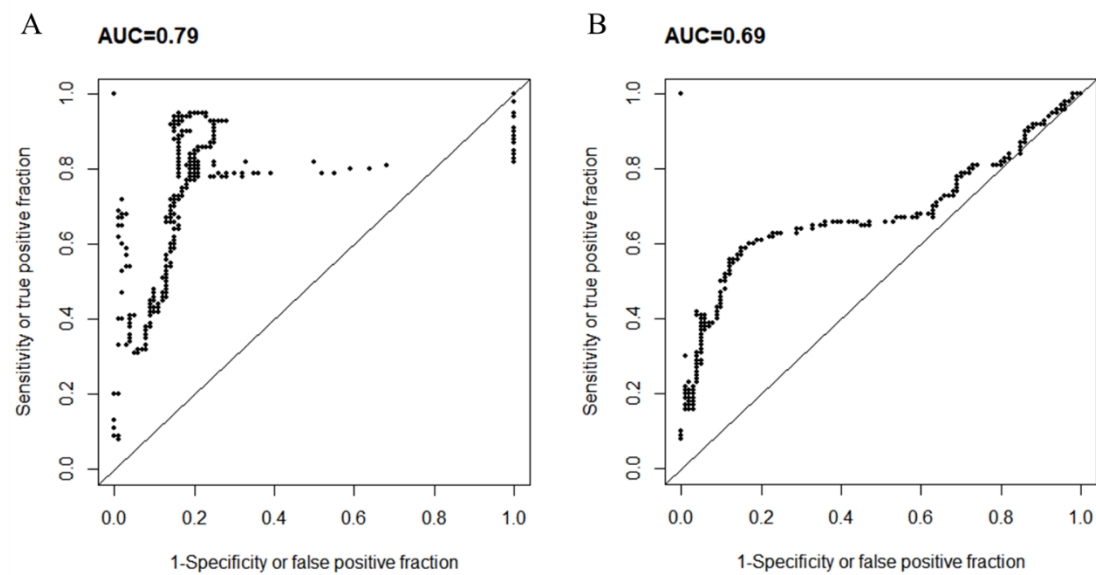
Model validation was conducted using the five-fold out-of-sample cross validation and the results were assessed under the receiver operating characteristic (ROC) curves. The original survey data was randomly partitioned into five subsets with similar sample size, of which a single subset was retained as

validation data while the remaining subsets was used as training data. The Bayesian geostatistical model with joint analysis of both point-referenced and area-level data was fitted based on the training data and the estimated prevalence was calculated on the locations of validation data. The process was repeated five times, with each of the five subsets used once as validation set and the remaining as training set. Results were merged together and a series of cut-off values were set from 0 to 1, based on which the observed and estimated prevalence was categorized to a binary number of zero or one. The ROC curve was draw to illustrate the predictive accuracy with sensitivity (the percentage of surveys with both observed and estimated prevalence categorized to one) and specificity (the percentage of surveys with both observed and estimated prevalence categorized to zero). The corresponding area under the curve (AUC) was calculated by the AUC function in the package “DescTools” in R (version 3.5.0). In addition, a Bayesian geostatistical model only based on point-referenced data was fitted and validated on the same datasets to compared its performance with that of the jointing modeling approach. Results were presented in Supplementary Table 3 and Supplementary Figure 2.

Supplementary Table 3: Results of model validation for the Bayesian geostatistical joint model and the model only based on point-referenced data.

Model	ME	MAE	MSE	AUC	Correlation coefficient*
Joint model	-0.0005	0.07	0.01	0.79	0.76
Model based on point-referenced data	0.05	0.09	0.02	0.69	0.38

*The correlation coefficient between the observed and the estimated prevalence.

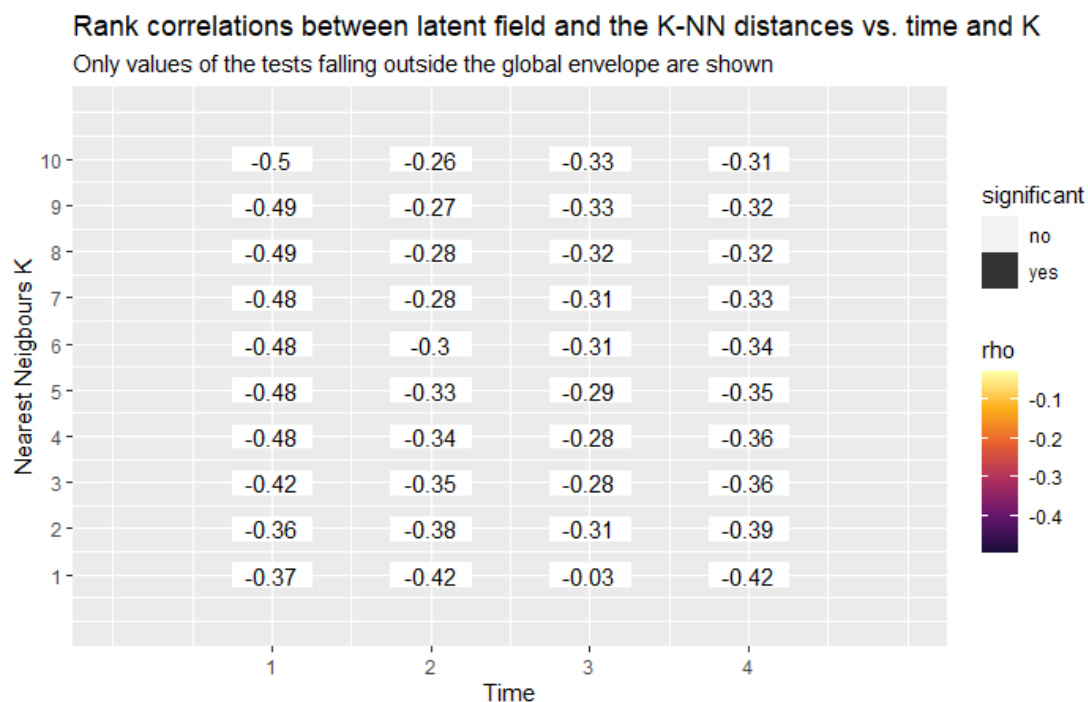


Supplementary Figure 2: ROC curves and AUCs of model validation.

(A) for the Bayesian geostatistical model with joint analysis of both point-referenced and area-level data and (B) for the Bayesian geostatistical model only based on point-referenced data.

3.3 A test for preferential sampling

Considering that the data in this study were sourced from different studies, preferential sampling might exist. We performed a test for preferential sampling of the data. For area-level data, the center of the area is taken as the test location, and for point-referenced data, the test location is the coordinate. A fast and intuitive Monte Carlo test for detecting preferential sampling of spatial-temporal processes is implemented using the package “PStestR” in R (version 3.6.3) (Watson, 2020). Results showed that no preferential sampling was found in any of the four study time periods (Supplementary Figure 3).



Supplementary Figure 3: A test for preferential sampling in four study time periods.

Time 1: before 1990, Time 2: 1990-1999, Time 3: 2000-2009, and Time 4: from 2010 onwards.

Reference

Aung WPP, Htoon TT, Tin HH, Thinn KK, Sanpool O, Jongthawin J, Sadaow L, Phosuk I, Rodpai R, Intapan PM, Maleewong W. 2017. First report and molecular identification of *Opisthorchis viverrini* infection in human communities from Lower Myanmar. *PLOS ONE* **12**:e177130. doi:10.1371/journal.pone.0177130

Forrer A, Sayasone S, Vounatsou P, Vonghachack Y, Bouakhasith D, Vogt S, Glaser R, Utzinger J, Akkhavong K, Odermatt P. 2012. Spatial distribution of, and risk factors for, *Opisthorchis viverrini* infection in southern Lao PDR. *PLOS Neglected Tropical Diseases* **6**:e1481. doi:10.1371/journal.pntd.0001481

Miyamoto K, Kirinoki M, Matsuda H, Hayashi N, Chigusa Y, Sinuon M, Chuor CM, Kitikoon V. 2014. Field survey focused on *Opisthorchis viverrini* infection in five provinces of Cambodia. *Parasitology International* **63**:366-373. doi:10.1016/j.parint.2013.12.003

Pettit LI. 1990. The Conditional Predictive Ordinate for the Normal Distribution. *Journal of the Royal Statistical Society. Series B (Methodological)* **52**:175-184. doi:10.1111/j.2517-6161.1990.tb01780.x

Van De N. 2004. Fish-borne trematodes in Vietnam. *Southeast Asian Journal of Tropical Medicine and Public Health* **35**:299-301. URL: <https://pdfs.semanticscholar.org/4952/fe365526c6cf9bb2>

e81571d151450d18ef0f.pdf

Watson J. 2020. A fast Monte Carlo test for preferential sampling. Cornell University.
URL:<https://arxiv.org/abs/2003.01319v2> [Preprint]

Wongsaroj T, Nithikathkul C, Rojkitikul W, Nakai W, Royal L, Rammasut P. 2014. National survey of helminthiasis in Thailand. *Asian Biomedicine* **8**:779-783. doi:10.5372/1905-7415.0806.357

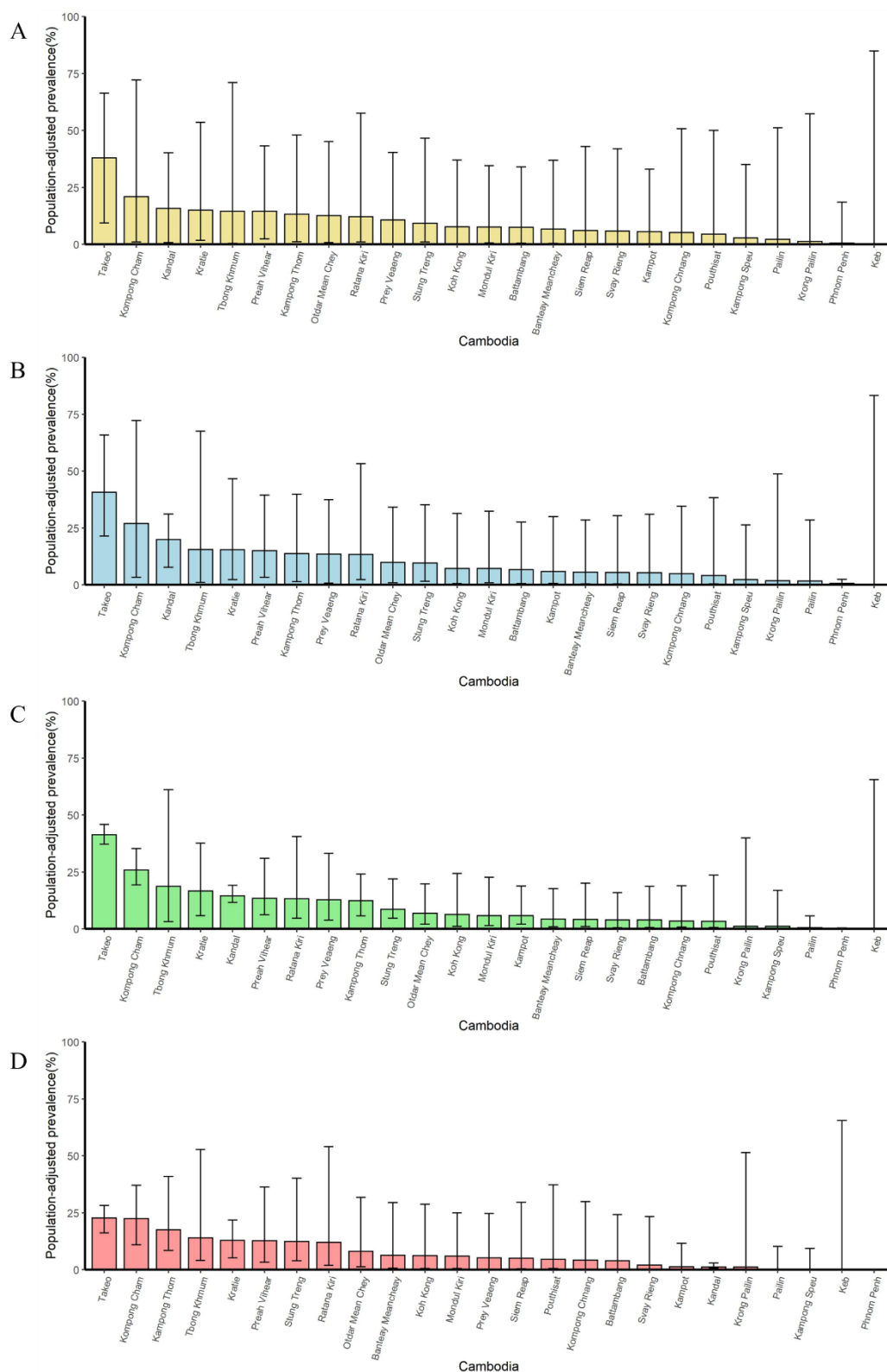
Appendix 4. Model-based population-adjusted estimated prevalence

4.1 Population-adjusted estimated prevalence at country level for each study period

Supplementary Table 4: Estimated prevalence in different periods in Southeast Asia (median & 95% BCI).

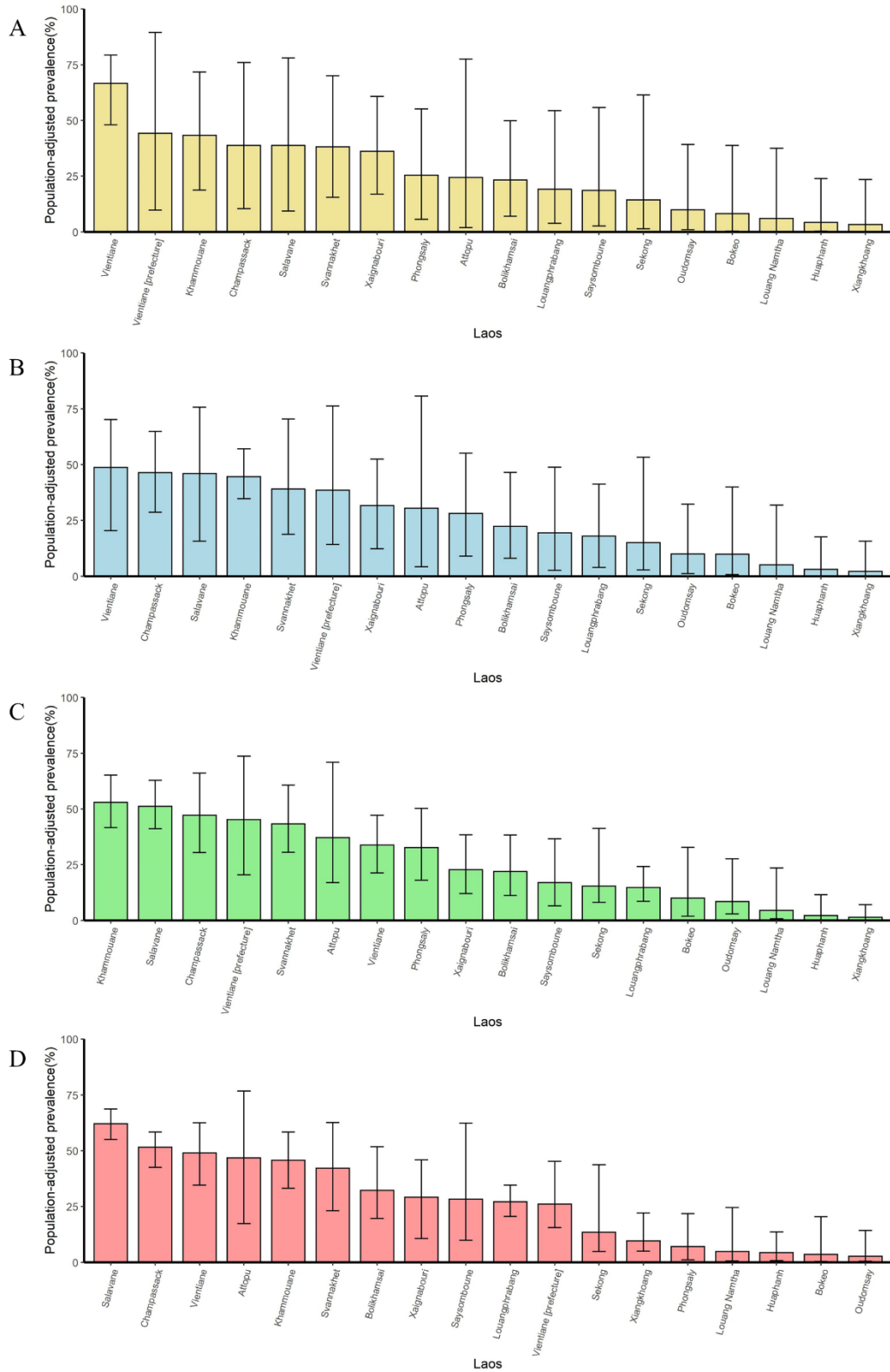
Country	Prevalence (%)			
	≤1989	1990-1999	2000-2009	≥2010
Cambodia	13.33 (7.58, 23.84)	13.31 (8.17, 20.36)	11.20 (8.81, 14.94)	8.57 (5.83, 12.85)
Laos	33.50 (24.40, 42.11)	32.28 (24.96, 39.58)	32.47 (27.41, 37.58)	32.47 (28.75, 37.08)
Thailand	21.44 (18.97, 26.92)	23.00 (20.37, 28.32)	17.81 (16.04, 21.94)	10.63 (9.48, 11.76)
Vietnam	2.43 (1.15, 4.00)	2.45 (1.46, 4.00)	2.34 (1.27, 4.04)	2.14 (0.89, 3.95)
Total	11.56 (10.14, 13.81)	12.10 (10.57, 14.28)	9.96 (8.88, 11.56)	6.96 (6.06, 8.06)

4.2 Population-adjusted estimated prevalence at administrative division of level one



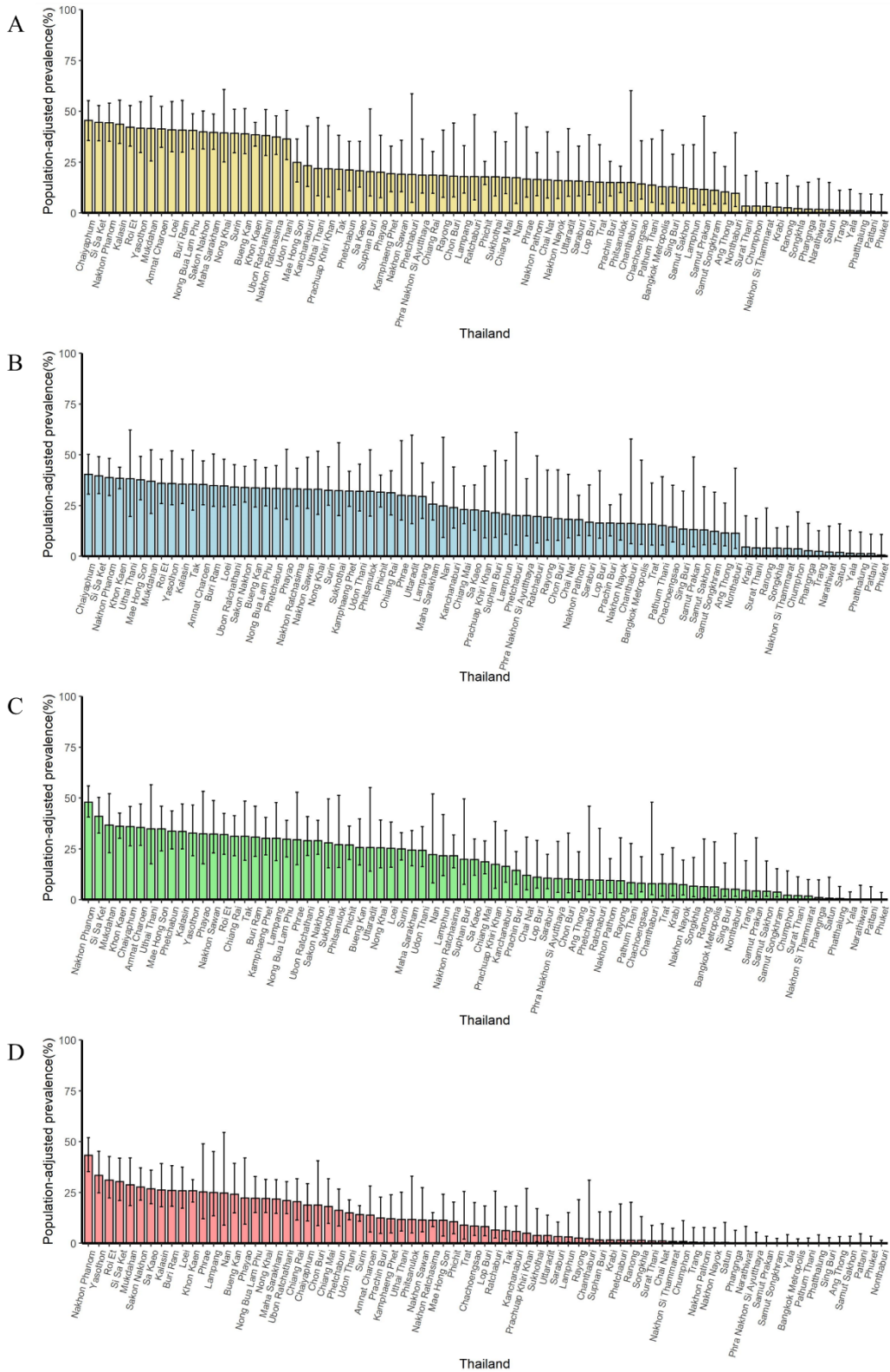
Supplementary Figure 4-1: The population-adjusted estimated prevalence (median±95% BCI) in Cambodia at administrative division of level one.

(A) Before 1990. (B) 1990-1999. (C) 2000-2009. (D) From 2010 onwards.



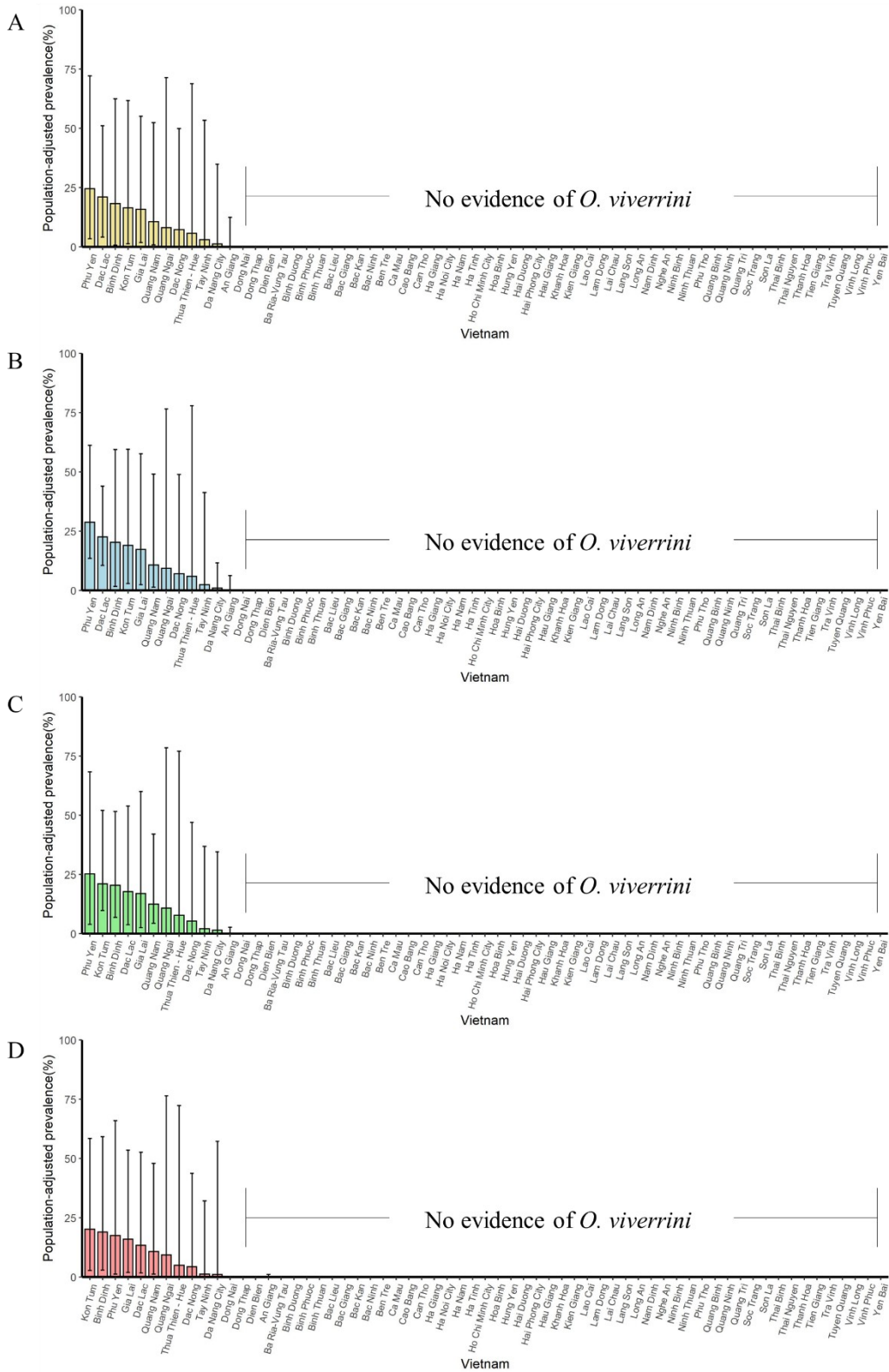
Supplementary Figure 4-2: The population-adjusted estimated prevalence (median±95% BCI) in Laos at administrative division of level one.

(A) Before 1990. (B) 1990-1999. (C) 2000-2009. (D) From 2010 onwards.



Supplementary Figure 4-3: The population-adjusted estimated prevalence (median±95% BCI) in Thailand at administrative division of level one.

(A) Before 1990. (B) 1990-1999. (C) 2000-2009. (D) From 2010 onwards.



Supplementary Figure 4-4: The population-adjusted estimated prevalence (median±95% BCI) in Vietnam at administrative division of level one. (A) Before 1990. (B) 1990-1999. (C) 2000-2009. (D) From 2010 onwards.

Appendix 5. Sensitivity analysis

5.1 Sensitivity analysis for imputation of missing data with unknown number of examined

For surveys only reported prevalence without number of examined, different values were assigned to the number of examined for sensitivity analysis.

Supplementary Table 5: Posterior summaries (median and 95% Bayesian credible intervals) of the geostatistical model parameters under different values assigned to the number of examined for surveys with the corresponding missing data

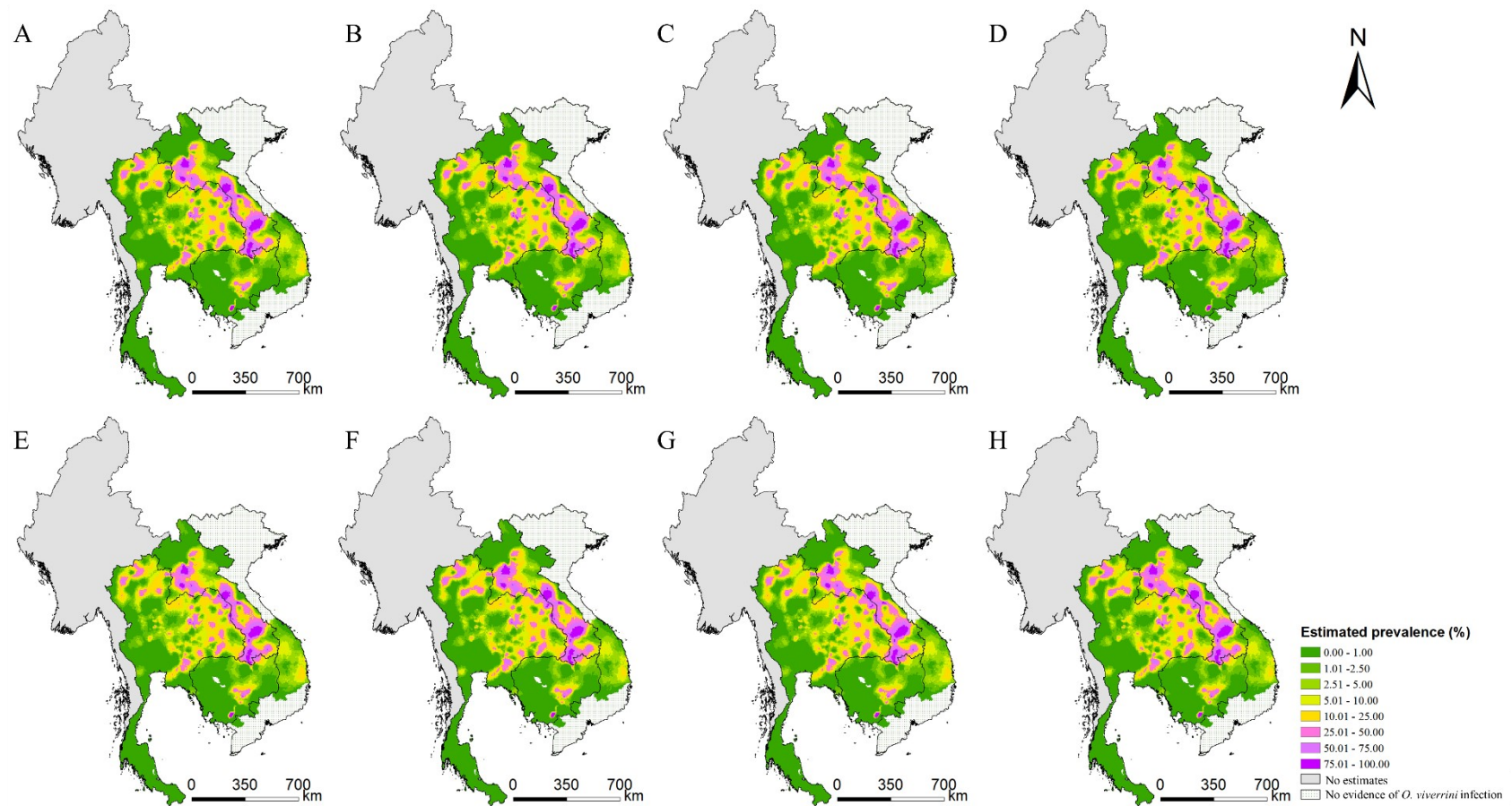
	Values assigned to point-referenced missing data/values assigned to area-level missing data				
	50/500 (final model)	30/500	80/500	50/300	50/800
Intercept	-5.51 (-6.19, -4.83)*	-5.45 (-6.13, -4.78)*	-5.55 (-6.22, -4.88)*	-5.33 (-5.96, -4.70)*	-5.58 (-6.28, -4.89)*
Survey type					
School-based survey	Ref	Ref	Ref	Ref	Ref
Community-based survey	0.34 (0.16, 0.51)*	0.28 (0.11, 0.46)*	0.41 (0.23, 0.58)*	0.36 (0.19, 0.54)*	0.32 (0.14, 0.49)*
Annual precipitation	-0.14 (-0.25, -0.03)*	-0.13 (-0.24, -0.02)*	-0.14 (-0.25, -0.03)*	-0.14 (-0.25, -0.03)*	-0.14 (-0.25, -0.02)*
Human influence index	0.18 (0.11, 0.25)*	0.18 (0.10, 0.25)*	0.18 (0.11, 0.25)*	0.18 (0.10, 0.25)*	0.18 (0.11, 0.25)*
Distance to the nearest open water bodies (km)					
< 0.50	Ref	Ref	Ref	Ref	Ref
0.50 - 1.50	-0.06 (-0.19, 0.07)	-0.04 (-0.17, 0.10)	-0.08 (-0.20, 0.05)	-0.06 (-0.19, 0.07)	-0.06 (-0.19, 0.08)
> 1.50	-0.17 (-0.34, 0.002)	-0.18 (-0.35, -0.006)*	-0.17 (-0.34, 0.005)	-0.17 (-0.34, 0.005)	-0.17 (-0.34, 0.001)
Travel time to the nearest big city (min)					
< 35.68	Ref	Ref	Ref	Ref	Ref
35.68 - 86.67	0.69 (0.48, 0.91)*	0.73 (0.51, 0.95)*	0.64 (0.44, 0.85)*	0.68 (0.47, 0.90)*	0.70 (0.48, 0.91)*
> 86.67	0.75 (0.51, 1.00)*	0.75 (0.50, 1.00)*	0.74 (0.50, 0.99)*	0.76 (0.51, 1.00)*	0.74 (0.50, 0.99)*
Spatial range (km)	61.75 (53.63, 71.08)	63.00 (54.81, 72.33)	60.57 (52.66, 69.93)	58.12 (50.57, 67.01)	63.85 (55.78, 73.50)
Temporal correlation coefficient ρ	0.85 (0.79, 0.89)	0.85 (0.79, 0.89)	0.84 (0.79, 0.89)	0.86 (0.80, 0.89)	0.83 (0.77, 0.88)
Spatial variance σ_{ϕ}^2	22.22 (18.36, 26.70)	21.49 (17.78, 25.89)	22.75 (18.87, 27.32)	20.73 (17.28, 24.89)	22.93 (19.24, 27.98)

*Significant based on 95% Bayesian credible interval (BCI).

Supplementary Table 5 (continue): Posterior summaries (median and 95% Bayesian credible intervals) of the geostatistical model parameters under different values assigned to the number of examined for surveys with the corresponding missing data

	Values assigned to point-referenced missing data/values assigned to area-level missing data			
	30/300	30/800	80/300	80/800
Intercept	-5.28 (-5.91, -4.65)*	-5.56 (-6.26, -4.86)*	-5.38 (-6.01, -4.75)*	-5.65 (-6.37, -4.95)*
Survey type				
School-based survey	Ref	Ref	Ref	Ref
Community-based survey	0.31 (0.13, 0.48)*	0.26 (0.09, 0.44)*	0.43 (0.26, 0.60)*	0.38 (0.21, 0.56)*
Annual precipitation	-0.13 (-0.24, -0.02)*	-0.13 (-0.24, -0.02)*	-0.14 (-0.25, -0.03)*	-0.14 (-0.25, -0.03)*
Human influence index	0.18 (0.10, 0.25)*	0.18 (0.11, 0.25)*	0.18 (0.10, 0.25)*	0.18 (0.11, 0.25)*
Distance to the nearest open water bodies (km)				
< 0.50	Ref	Ref	Ref	Ref
0.50 - 1.50	-0.04 (-0.17, 0.09)	-0.03 (-0.17, 0.10)	-0.08 (-0.20, 0.05)	-0.07 (-0.20, 0.05)
> 1.50	-0.18 (-0.35, -0.003)*	-0.18 (-0.35, -0.007)*	-0.16 (-0.34, 0.007)	-0.17 (-0.33, 0.004)
Travel time to the nearest big city (min)				
< 35.68	Ref	Ref	Ref	Ref
35.68 - 86.67	0.72 (0.50, 0.94)*	0.73 (0.51, 0.95)*	0.63 (0.43, 0.84)*	0.65 (0.44, 0.86)*
> 86.67	0.75 (0.51, 1.00)*	0.75 (0.50, 0.99)*	0.75 (0.50, 0.99)*	0.74 (0.49, 0.98)*
Spatial range (km)	59.31 (51.74, 68.32)	65.40 (57.22, 75.13)	57.21 (49.70, 66.00)	63.13 (55.03, 72.74)
Temporal correlation coefficient ρ	0.85 (0.80, 0.89)	0.83 (0.77, 0.88)	0.86 (0.80, 0.90)	0.83 (0.78, 0.88)
Spatial variance σ_{ϕ}^2	20.07 (16.72, 24.15)	22.51 (18.77, 27.33)	21.28 (17.75, 25.51)	23.72 (19.82, 28.72)

*Significant based on 95% Bayesian credible interval (BCI).



Supplementary Figure 5: Model-based estimated risk maps of *O. viverrini* infection from 2010 onwards under different values assigned to the number of examined for surveys with the corresponding missing data.

Values assigned to point-referenced missing data/values assigned to area-level missing data are 30/500 for (A), 80/500 for (B), 50/300 for (C), 50/800 for (D), 30/300 for (E), 30/800 for (F), 80/300 for (G), and 80/800 for (H).

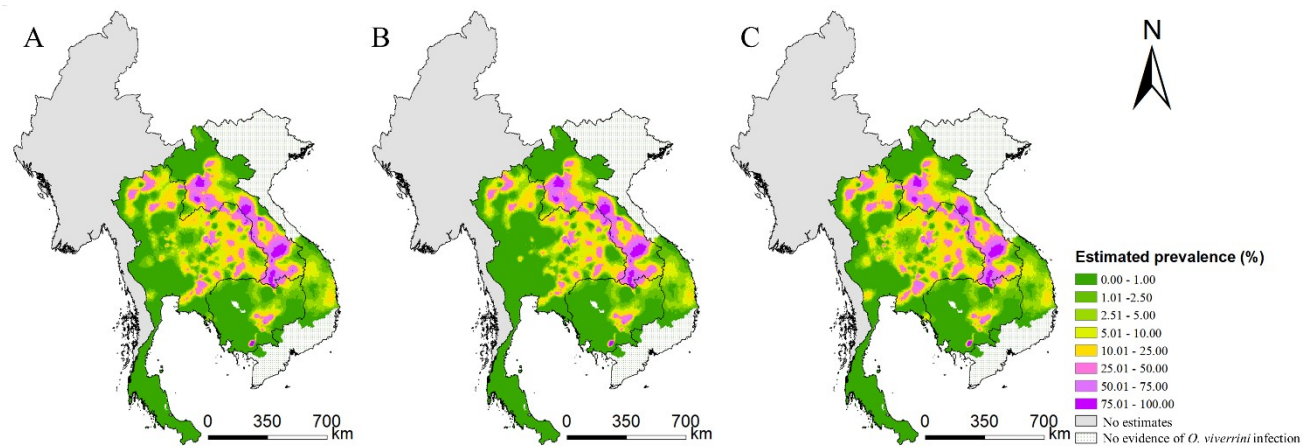
5.2 Sensitivity analysis for surveys reported prevalence in intervals

There was one literature from Suwannatrai and colleagues (*Suwannatrai, et al.,2018*) reporting observed prevalence of *O. viverrini* infection in intervals for 77 areas across Thailand. To make full use of all eligible data, we used the median values of the intervals as observed prevalence for our final model. Sensitivity analysis was done by using the lower and the upper limits of the intervals in the modeling analysis and results were compared.

Supplementary Table 6: Posterior summaries (median and 95% Bayesian credible intervals) of the geostatistical model parameters under different values assigned to prevalence for surveys only reported prevalence in intervals

	Values assigned		
	Median (final model)	Lower limit	Upper limit
Intercept	-5.51 (-6.19, -4.83)*	-5.78 (-6.53, -5.03) *	-5.38 (-6.02, -4.74) *
Survey type			
School-based survey	Ref	Ref	Ref
Community-based survey	0.34 (0.16, 0.51)*	0.33 (0.16, 0.51)*	0.34 (0.16, 0.51)*
Annual precipitation	-0.14 (-0.25, -0.03)*	-0.13 (-0.24, -0.02)*	-0.14 (-0.25, -0.03)*
Human influence index	0.18 (0.11, 0.25)*	0.18 (0.10, 0.25)*	0.18 (0.11, 0.25)*
Distance to the nearest open water bodies (km)			
< 0.50	Ref	Ref	Ref
0.50 - 1.50	-0.06 (-0.19, 0.07)	-0.05 (-0.17, 0.08)	-0.07 (-0.20, 0.06)
> 1.50	-0.17 (-0.34, 0.002)	-0.14 (-0.31, 0.03)	-0.19 (-0.37, -0.02)*
Travel time to the nearest big city (min)			
< 35.68	Ref	Ref	Ref
35.68 - 86.67	0.69 (0.48, 0.91)*	0.67 (0.46, 0.89)*	0.71 (0.49, 0.92)*
> 86.67	0.75 (0.51, 1.00)*	0.74 (0.49, 0.98)*	0.76 (0.51, 1.00)*
Spatial range (km)	61.75 (53.63, 71.08)	69.21 (60.24, 80.67)	58.92 (51.68, 68.28)
Temporal correlation coefficient ρ	0.85 (0.79, 0.89)	0.84 (0.78, 0.90)	0.84 (0.78, 0.88)
Spatial variance σ_{ϕ}^2	22.22 (18.36, 26.70)	24.11 (19.95, 29.95)	21.75 (18.35, 26.34)

*Significant based on 95% Bayesian credible interval (BCI).



Supplementary Figure 6: Model-based estimated risk maps of *O. viverrini* infection from 2010 onwards under different values assigned to prevalence for surveys only reported prevalence in intervals.

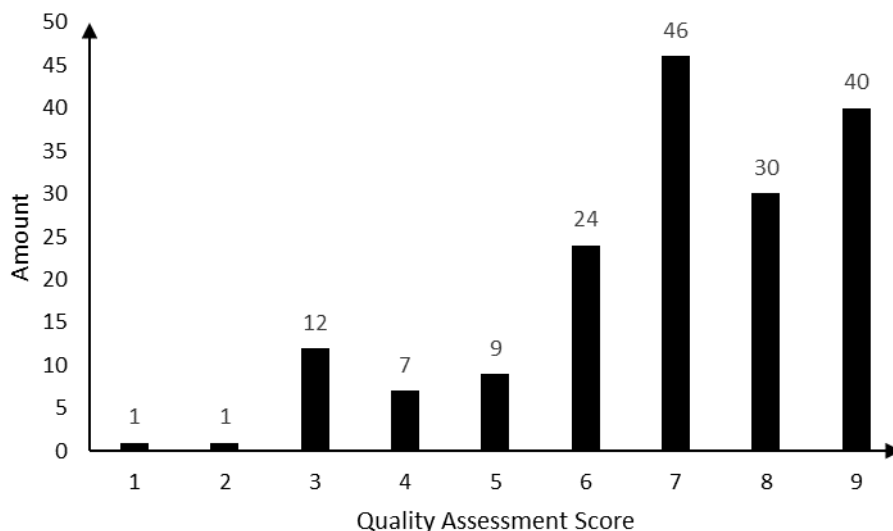
(A) the median values, (B) the lower limits and (C) the upper limits of the intervals were assigned to prevalence.

Reference

Suwannatrai A, Saichua P, Haswell M. 2018. Epidemiology of *Opisthorchis viverrini* Infection. *Advances in Parasitology* **101**:41-67. doi:10.1016/bs.apar.2018.05.002

Appendix 6. Quality assessment of eligible studies

We did quality evaluation for each literature included in the final geostatistical modeling analysis. The methodology is described in the “Quality Assessment” part in the study protocol. The score for each literature is listed in Supplementary Table 6. Around 70% of literatures got a score equal or more than 7 (Supplementary Figure 7), indicating an overall good quality of eligible literatures in our study.



Supplementary Figure 7: Result of quality assessment

Supplementary Table 7: Quality assessment for eligible literatures

Literature (first author & year of publication)	Q1	Q2	Q3	Q4	Q5	Q6	Q7	Q8	Q9	Total score
<i>Viyanant, et al.,1983</i>	1	0	1	1	1	1	1	1	0	7
<i>Waikagul, et al.,2002</i>	1	0	1	1	1	1	1	0	0	6
<i>Assavapongpaiboon, et al.,2018</i>	1	1	1	0	1	1	1	0	1	7
<i>Boonjaraspinyo, et al.,2013</i>	1	1	1	1	1	1	1	0	1	8
<i>Suwannahitorn, et al.,2013</i>	1	1	1	1	1	1	1	1	1	9
<i>Prakobwong, et al.,2017</i>	1	1	1	1	1	1	1	0	0	7
<i>Traub, et al.,2009</i>	1	0	1	1	1	1	1	1	1	8
<i>Sornmani, et al.,1984</i>	0	0	1	1	0	1	1	0	0	4
<i>Chai and Hongvanthong,1998</i>	1	1	1	1	1	1	1	1	0	8
<i>Jadsri and Noojoy,1999</i>	1	1	1	1	0	1	1	0	0	6
<i>Sohn, et al.,2011</i>	1	0	1	1	1	1	1	1	1	8
<i>Worasith, et al.,2015</i>	1	1	1	1	1	1	1	1	1	9
<i>Kobayashi, et al.,2000</i>	0	1	1	1	1	1	1	0	0	6
<i>Vannachone, et al.,1998</i>	0	1	1	1	1	1	1	0	0	6
<i>Sornmani, et al.,1981</i>	1	1	1	1	0	1	0	0	0	5
<i>Kaewpitoon, et al.,2016</i>	1	1	1	1	1	1	1	0	0	7
<i>Bukkhunthod, et al.,2020</i>	1	1	1	1	0	1	1	0	0	6
<i>Wang, et al.,2017</i>	0	0	1	0	0	1	1	0	1	4
<i>Htun, et al.,2018</i>	1	1	1	1	1	1	1	1	1	9
<i>Van CD, et al.,2017</i>	1	1	1	1	0	1	0	0	1	6
<i>Erlanger, et al.,2008</i>	1	1	1	1	0	1	0	0	1	6

Literature (first author & year of publication)	Q1	Q2	Q3	Q4	Q5	Q6	Q7	Q8	Q9	Total score
<i>Viravan, et al.,1986</i>	0	1	1	1	0	1	0	0	0	4
<i>Doanh and Nawa,2016</i>	0	0	1	0	0	1	0	0	1	3
<i>Wongsawad, et al.,2012</i>	1	1	1	1	1	1	0	0	1	7
<i>Kaewpitoon, et al.,2012</i>	1	1	1	1	1	1	1	0	1	8
<i>Worasith, et al.,2019</i>	1	1	1	1	1	1	1	0	1	8
<i>Vonghachack, et al.,2017</i>	1	1	1	1	1	1	1	1	1	9
<i>Charoensuk, et al.,2019</i>	1	0	1	1	1	1	1	0	1	7
<i>Sato, et al.,2010</i>	0	0	1	1	1	1	1	1	1	7
<i>Yajima, et al.,2009</i>	1	1	1	1	1	1	1	0	1	8
<i>Haswell-Elkins, et al.,1994</i>	1	1	1	1	1	1	1	1	0	8
<i>Laoraksawong, et al.,2018</i>	1	1	1	1	1	1	1	0	1	8
<i>Hung, et al.,2015</i>	1	1	1	1	1	1	1	1	1	9
<i>Giboda, et al.,1991</i>	1	1	1	1	1	0	1	0	0	6
<i>Laymanivong, et al.,2014</i>	1	0	1	1	1	1	1	1	1	8
<i>Kaewpitoon, et al.,2018</i>	1	1	1	1	1	1	1	0	0	7
<i>Khieu, et al.,2013</i>	1	1	1	1	1	1	1	1	1	9
<i>Haswell-Elkins, et al.,1991</i>	1	1	1	1	1	1	1	0	0	7
<i>Sohn, et al.,2011</i>	1	0	1	1	1	1	1	1	1	8
<i>Soukhathamvong, et al.,2011</i>	1	0	1	1	0	1	1	1	1	7
<i>Salao, et al.,2020</i>	1	0	1	1	1	0	0	0	1	5
<i>Wang, et al.,2013</i>	1	1	1	0	0	1	1	0	1	6
<i>Doi, et al.,2017</i>	1	1	1	1	1	1	1	0	0	7
<i>Sithithaworn, et al.,2006</i>	1	1	1	1	1	1	1	0	0	7
<i>Sayasone, et al.,2007</i>	1	1	1	0	1	1	1	1	1	8
<i>Prakobwong, et al.,2017</i>	1	1	1	1	1	1	1	0	1	8
<i>Suwannatrai, et al.,2018</i>	0	0	0	0	0	1	1	0	1	3
<i>Sithithaworn, et al.,2003</i>	1	1	1	1	1	1	1	1	1	9
<i>Vonghachack, et al.,2015</i>	1	1	1	1	1	1	1	1	1	9
<i>Laoprom, et al.,2016</i>	1	1	1	1	1	1	1	1	1	9
<i>Wangboon, et al.,2019</i>	1	1	1	1	1	1	1	0	1	8
<i>Miyamoto, et al.,2014</i>	1	1	1	1	1	1	1	1	1	9
<i>Saowakontha, et al.,1993</i>	1	1	1	1	1	1	1	0	0	7
<i>Laymanivong, et al.,2016</i>	1	1	1	1	1	1	0	0	1	7
<i>Aung, et al.,2017</i>	1	1	1	1	1	1	1	1	1	9
<i>Saenna, et al.,2017</i>	1	1	1	1	1	1	0	0	1	7
<i>Watthanakulpanich, et al.,2010</i>	1	0	1	1	1	1	0	1	1	7
<i>Sayasone, et al.,2011</i>	1	1	1	1	1	1	1	1	1	9
<i>Phongluxa, et al.,2013</i>	1	1	1	1	1	1	1	1	1	9
<i>Wiwanitkit, et al.,2002</i>	1	0	1	1	0	1	0	0	0	4
<i>Wijit, et al.,2013</i>	1	0	1	1	1	1	0	1	1	7
<i>Chai, et al.,2009</i>	1	1	1	1	1	1	1	1	1	9
<i>Pauly, et al.,2019</i>	0	1	1	1	1	1	1	0	1	7
<i>Bless, et al.,2015</i>	1	1	1	1	1	1	1	1	1	9

Literature (first author & year of publication)	Q1	Q2	Q3	Q4	Q5	Q6	Q7	Q8	Q9	Total score
<i>Chai, et al.,2007</i>	1	1	1	1	1	1	1	0	0	7
<i>Yong, et al.,2012</i>	1	1	1	1	1	1	1	1	1	9
<i>De NV and Le TH,2011</i>	1	1	1	1	1	1	1	1	1	9
<i>Chai, et al.,2013</i>	1	0	1	1	1	1	1	1	1	8
<i>Watwiengkam, et al.,2013</i>	1	0	1	1	1	1	0	1	1	7
<i>Duenngai, et al.,2008</i>	0	0	1	1	1	1	0	1	1	6
<i>Rangsin, et al.,2009</i>	1	1	1	1	1	1	1	1	1	9
<i>Sornmani, et al.,1984</i>	1	0	1	1	1	1	1	0	0	6
<i>Saengsawang, et al.,2013</i>	1	1	1	1	1	1	1	1	1	9
<i>Sornlorm, et al.,2019</i>	1	1	1	1	1	1	0	0	1	7
<i>Sinuon, et al.,2003</i>	1	1	1	1	1	1	0	0	0	6
<i>Chai, et al.,2015</i>	1	0	1	1	1	1	1	0	1	7
<i>Warunee, et al.,2007</i>	1	1	1	1	1	1	1	1	1	9
<i>Kasuya, et al.,1989</i>	1	1	1	1	0	1	0	0	0	5
<i>Ribas, et al.,2017</i>	1	1	1	1	1	1	0	0	1	7
<i>Piangjai, et al.,2003</i>	1	1	1	1	1	1	1	1	1	9
<i>Wongba, et al.,2011</i>	1	0	1	1	1	1	0	1	1	7
<i>Strandgaard, et al.,2008</i>	1	1	1	0	0	1	1	0	0	5
<i>Schurer, et al.,2019</i>	0	1	1	1	0	1	0	0	1	5
<i>Sohn, et al.,2019</i>	0	0	1	1	1	0	1	0	1	5
<i>Brockelman, et al.,1987</i>	1	1	1	1	1	1	1	0	0	7
<i>Chai, et al.,2005</i>	1	1	1	1	1	1	1	1	1	9
<i>León, et al.,2018</i>	1	0	1	0	0	1	1	1	1	6
<i>Buathong, et al.,2017</i>	1	0	1	1	1	1	1	1	1	8
<i>Feldmeier, et al.,2016</i>	1	1	1	1	1	1	0	1	0	7
<i>Upatham, et al.,1982</i>	1	1	1	0	1	1	1	0	1	7
<i>Araki, et al.,2018</i>	1	1	1	1	1	1	1	0	0	7
<i>Sayasone, et al.,2015</i>	1	1	1	1	1	1	1	1	1	9
<i>Kaewpitoon, et al.,2016</i>	1	1	1	1	1	1	1	0	0	7
<i>Uengarporn, et al.,2016</i>	1	1	1	1	1	1	1	0	0	7
<i>Radomyos, et al.,1998</i>	1	0	1	1	1	1	0	1	0	6
<i>Kaewpitoon, et al.,2016</i>	1	1	1	1	1	1	1	0	0	7
<i>Nithikathkul, et al.,2009</i>	1	1	1	1	1	1	1	0	1	8
<i>Pungpak, et al.,1994</i>	1	1	1	1	0	1	1	0	0	6
<i>Dao, et al.,2016</i>	1	1	1	1	1	1	1	1	1	9
<i>Srivatanakul, et al.,1991</i>	1	1	1	1	1	1	1	0	0	7
<i>Kaewpitoon, et al.,2016</i>	1	1	1	1	1	1	1	0	0	7
<i>Chaisiri, et al.,2018</i>	1	1	1	1	1	1	1	1	1	9
<i>Sato, et al.,2015</i>	1	1	1	1	1	1	1	0	1	8
<i>Lovis, et al.,2009</i>	1	0	1	1	1	1	1	0	1	7
<i>Bunnag, et al.,1980</i>	1	1	1	1	1	1	1	0	0	7
<i>Pumidonming, et al.,2018</i>	1	1	1	1	1	1	1	1	1	9
<i>Yoshida, et al.,2019</i>	1	1	1	1	1	1	1	1	1	9

Literature (first author & year of publication)	Q1	Q2	Q3	Q4	Q5	Q6	Q7	Q8	Q9	Total score
<i>Nakamura,2017</i>	1	0	1	1	1	1	1	0	0	6
<i>Niamnuy, et al.,2016</i>	1	1	1	1	1	1	0	0	1	7
<i>Chuangchaiya, et al.,2019</i>	1	1	1	1	1	1	1	1	1	9
<i>Songserm, et al.,2012</i>	1	1	1	1	1	1	1	0	1	8
<i>Saiyachak, et al.,2016</i>	1	1	1	1	1	1	1	1	0	8
<i>Maleewong, et al.,1992</i>	1	1	1	1	1	1	1	0	0	7
<i>Chaiputcha, et al.,2015</i>	1	1	1	1	1	1	1	1	0	8
<i>Thaewnongiew, et al.,2014</i>	1	1	0	0	1	1	1	0	1	6
<i>Khieu, et al.,2014</i>	1	1	1	1	1	1	1	1	1	9
<i>Sohn, et al.,2014</i>	1	1	1	1	1	1	1	1	1	9
<i>Eom, et al.,2014</i>	1	1	1	1	1	1	1	1	1	9
<i>Ruankham, et al.,2014</i>	1	0	1	1	1	1	1	0	0	6
<i>Yong, et al.,2014</i>	1	1	1	1	1	1	1	1	1	9
<i>Kobayashi, et al.,1999</i>	1	1	1	1	1	1	1	1	1	9
<i>Rim, et al.,2003</i>	1	0	1	1	1	1	1	1	1	8
<i>Kobayashi, et al.,1996</i>	1	1	1	1	0	1	0	0	0	5
<i>Joob and Wiwanitkit,2017</i>	0	0	1	0	0	0	0	0	0	1
<i>Sukontason, et al.,2001</i>	1	0	1	1	1	1	1	0	0	6
<i>Sriamporn, et al.,2004</i>	1	1	1	1	1	1	1	1	1	9
<i>Sohn, et al.,2012</i>	1	1	1	1	1	1	1	1	1	9
<i>Kaewpitoon, et al.,2012</i>	1	1	1	1	1	1	1	0	1	8
<i>Saengsawang, et al.,2012</i>	1	1	1	1	1	1	1	1	1	9
<i>Nontasut, et al.,2005</i>	1	0	1	1	1	1	1	0	0	6
<i>Chai, et al.,2010</i>	1	0	1	1	1	1	1	1	1	8
<i>Dang, et al.,2008</i>	1	1	1	1	1	1	1	0	1	8
<i>Kaewpitoon, et al.,2016</i>	1	0	1	1	1	1	1	0	0	6
<i>Kaewpitoon, et al.,2016</i>	1	1	1	1	1	1	1	0	0	7
<i>Yeoh, et al.,2015</i>	1	1	1	1	1	1	1	1	0	8
<i>Upatham, et al.,1984</i>	1	1	1	1	1	1	1	0	0	7
<i>Rujirakul, et al.,2015</i>	1	0	1	1	0	1	1	0	0	5
<i>Yoon, et al.,2014</i>	1	1	1	1	1	1	1	0	1	8
<i>Tomokawa, et al.,2012</i>	1	1	1	1	1	1	1	0	1	8
<i>Akai, et al.,1995</i>	1	0	1	0	0	1	0	0	0	3
<i>Phimpraphai, et al.,2017</i>	1	1	1	0	1	1	0	0	1	6
<i>Forrer, et al.,2012</i>	0	0	1	0	0	1	1	0	1	4
<i>Lee, et al.,2002</i>	1	1	1	1	1	1	1	0	0	7
<i>Aye, et al.,2015</i>	1	1	1	1	1	1	1	1	1	9
<i>Kaewpitoon, et al.,2015</i>	1	1	1	1	1	1	1	0	0	7
<i>Sithithaworn, et al.,2012</i>	0	0	1	0	0	1	0	0	1	3
<i>Tesana, et al.,2007</i>	1	0	1	1	1	1	0	0	0	5
<i>Sripa, et al.,2017</i>	0	0	1	0	0	1	0	0	1	3
<i>Tungtrongchitr, et al.,2007</i>	1	0	1	1	1	1	0	1	0	6
<i>Waree, et al.,2001</i>	1	1	1	1	1	1	1	0	0	7

Literature (first author & year of publication)	Q1	Q2	Q3	Q4	Q5	Q6	Q7	Q8	Q9	Total score
<i>Schür, et al.,2014</i>	1	1	1	1	1	1	1	1	1	9
<i>Kaewpitoon, et al.,2019</i>	0	1	1	1	1	1	1	1	0	7
<i>Echaubard, et al.,2016</i>	0	0	1	0	0	1	1	0	1	4
<i>Srivatanakul, et al.,1991</i>	1	1	1	1	1	1	0	1	0	7
<i>Khampitak, et al.,2006</i>	1	1	1	1	1	1	0	0	0	6
<i>Sripa, et al.,2015</i>	0	0	1	0	0	1	1	0	1	4
<i>Vonghachack, et al.,2017</i>	1	1	1	1	1	1	1	1	1	9
<i>Kim, et al.,2018</i>	1	1	1	1	1	1	1	1	1	9
<i>Pungpak, et al.,1989</i>	1	1	1	1	1	1	1	0	0	7
<i>Mairiang, et al.,2012</i>	1	1	1	1	1	1	1	0	1	8
<i>Sungkasubun, et al.,2016</i>	1	1	1	1	0	1	1	1	1	8
<i>Ong, et al.,2016</i>	1	1	1	1	0	1	1	0	1	7
<i>Chuong and Tuan,1994</i> (in Vietnamese)	0	0	1	1	0	1	0	0	0	3
<i>Chuong, et al.,2000</i> (in Vietnamese)	0	0	1	1	0	1	0	0	0	3
<i>Chuong, et al.,1997</i> (in Vietnamese)	0	0	1	1	0	1	0	0	0	3
<i>Chuong, et al.,2014</i> (in Vietnamese)	0	0	1	1	0	1	0	0	0	3
<i>Chuong and Tuan,2011</i> (in Vietnamese)	0	0	1	0	0	1	0	0	0	2
<i>De, et al.,1997</i> (in Vietnamese)	0	0	1	1	0	1	0	0	0	3
<i>De, et al.,1996</i> (in Vietnamese)	0	0	1	1	0	1	0	0	0	3
<i>De, et al.,1998</i> (in Vietnamese)	0	0	1	1	0	1	0	0	0	3

References

- Akai PS, Pungpak S, Chaicumpa W, Kitikoon V, Ruangkunaporn Y, Bunnag D, Befus AD. 1995. Serum antibody responses in opisthorchiasis. *International Journal for Parasitology* **25**:971-973. doi:10.1016/0020-7519(94)00212-7
- Araki H, Ong K, Lorphachan L, Soundala P, Iwagami M, Shibanuma A, Hongvanthong B, Brey PT, Kano S, Jimba M. 2018. Mothers' *Opisthorchis viverrini* infection status and raw fish dish consumption in Lao People's Democratic Republic: determinants of child infection status. *Tropical Medicine and Health* **46**:29. doi:10.1186/s41182-018-0112-y
- Assavapongpaiboon B, Bunkasem U, Sanprasert V, Nuchprayoon S. 2018. A Cross-Sectional Study on Intestinal Parasitic Infections in Children in Suburban Public Primary Schools, Saraburi, the Central Region of Thailand. *The American journal of tropical medicine and hygiene* **98**:763-767. doi:10.4269/ajtmh.17-0240
- Aung WPP, Htoon TT, Tin HH, Thinn KK, Sanpool O, Jongthawin J, Sadaow L, Phosuk I, Rodpai R, Intapan PM, Maleewong W. 2017. First report and molecular identification of *Opisthorchis viverrini* infection in human communities from Lower Myanmar. *PLOS ONE* **12**:e177130. doi:10.1371/journal.pone.0177130
- Aye SP, Rajpho V, Phongluxa K, Vonghachack Y, Hattendorf J, Hongvanthong B, Rasaphon O, Sripa B, Akkavong K, Hatz C, Odermatt P. 2015. Subtle to severe hepatobiliary morbidity in *Opisthorchis viverrini* endemic settings in southern Laos. *Acta Tropica* **141**:303-309. doi:10.1016/j.actatropica.2014.09.014
- Bless PJ, Schar F, Khieu V, Kramme S, Muth S, Marti H, Odermatt P. 2015. High prevalence of large trematode eggs in schoolchildren in Cambodia. *Acta Tropica* **141**:295-302.

doi:10.1016/j.actatropica.2014.09.007

Boonjaraspinyo S, Boonmars T, Kaewsamut B, Ekobol N, Laummaunwai P, Aukkanimart R, Wonkchalee N, Juasook A, Sriraj P. 2013. A Cross-Sectional Study on Intestinal Parasitic Infections in Rural Communities, Northeast Thailand. *The Korean Journal of Parasitology* **51**:727-734. doi:10.3347/kjp.2013.51.6.727

Brockelman WY, Upatham ES, Viyanant V, Hirunraks A. 1987. Measurement of incidence of the human liver fluke, *Opisthorchis viverrini*, in northeast Thailand. *Transactions of the Royal Society of Tropical Medicine and Hygiene* **81**:327. doi: 10.1016/0035-9203(87)90255-0

Buathong S, Leelayoova S, Mungthin M, Ruang-Areerate T, Naaglor T, Suwannahitatorn P, Piyaraj P, Taamasri P, Tan-Ariya P. 2017. Molecular discrimination of *Opisthorchis*-like eggs from residents in a rural community of central Thailand. *PLOS Neglected Tropical Diseases* **11**:e6030. doi:10.1371/journal.pntd.0006030

Bukkhunthod P, Meererksom T, Pechdee P, Ponphimai S, Khiaowichit J, Kaewpitoon N, Thueng-In K, Leng M, Namhong T, Taweepakdechot A, Yardcharoen N, Srithongklang W, Wakhuwathapong P, Keeratibharat N, Kaewpitoon SJ. 2020. Animation as Supplementary Learning Material About Carcinogenic Liver Fluke in Classes for Primary Schoolchildren. *Journal of cancer education : the official journal of the American Association for Cancer Education* **35**:14-21. doi:10.1007/s13187-018-1434-5

Bunnag T, Sornmani S, Impand P, Harinasuta C. 1980. Potential health hazards of the water resources development: a health survey in the Phitsanulok Irrigation Project, Nan River Basin, Northern Thailand. *The Southeast Asian Journal of Tropical Medicine and Public Health* **11**:559-565. PMID: 7221699

Chai JY, Han ET, Guk SM, Shin EH, Sohn WM, Yong TS, Eom KS, Lee KH, Jeong HG, Ryang YS, Hoang EH, Phommasack B, Insisiengmay B, Lee SH, Rim HJ. 2007. High prevalence of liver and intestinal fluke infections among residents of Savannakhet Province in Laos. *The Korean Journal of Parasitology* **45**:213-218. doi:10.3347/kjp.2007.45.3.213

Chai JY, Han ET, Shin EH, Sohn WM, Yong TS, Eom KS, Min DY, Um JY, Park MS, Hoang EH, Phommasack B, Insisiengmay B, Lee SH, Rim HJ. 2009. High prevalence of *Haplorchis taichui*, *Phaneropsolus molenkampi*, and other helminth infections among people in Khammouane province, Lao PDR. *The Korean Journal of Parasitology* **47**:243-247. doi:10.3347/kjp.2009.47.3.243

Chai JY, Hongvanthong B. 1998. A small-scale survey of intestinal helminthic infections among the residents near Pakse, Laos. *The Korean Journal of Parasitology* **36**:55-58. doi:10.3347/kjp.1998.36.1.55

Chai JY, Park JH, Han ET, Guk SM, Shin EH, Lin A, Kim JL, Sohn WM, Yong TS, Eom KS, Min DY, Hwang EH, Phommasack B, Insisiengmay B, Rim HJ. 2005. Mixed infections with *Opisthorchis viverrini* and intestinal flukes in residents of Vientiane Municipality and Saravane Province in Laos. *Journal of Helminthology* **79**:283-289. doi:10.1079 / joh2005302

Chai JY, Sohn WM, Jung BK, Yong TS, Eom KS, Min DY, Insisiengmay B, Insisiengmay S, Phommasack B, Rim HJ. 2015. Intestinal Helminths Recovered from Humans in Xieng Khouang Province, Lao PDR with a Particular Note on *Haplorchis pumilio* Infection. *The Korean Journal of Parasitology* **53**:439-445. doi:10.3347/kjp.2015.53.4.439

Chai JY, Yong TS, Eom KS, Min DY, Jeon HK, Kim TY, Jung BK, Sisabath L, Insisiengmay B, Phommasack B, Rim HJ. 2013. Hyperendemicity of *Haplorchis taichui* infection among riparian people in Saravane and Champasak province, Lao PDR. *The Korean Journal of Parasitology* **51**:305-311. doi:10.3347/kjp.2013.51.3.305

Chai JY, Yong TS, Eom KS, Min DY, Shin EH, Banouvong V, Insisiengmay B, Insisiengmay S,

- Phommasack B, Rim HJ. 2010. Prevalence of the intestinal flukes *Haplorchis taichui* and *H. yokogawai* in a mountainous area of Phongsaly Province, Lao PDR. *The Korean Journal of Parasitology* **48**:339-342. doi:10.3347/kjp.2010.48.4.339
- Chaiputcha K, Promthet S, Bradshaw P. 2015. Prevalence and Risk Factors for Infection by *Opisthorchis viverrini* in an Urban Area of Mahasarakham Province, Northeast Thailand. *Asian Pacific Journal of Cancer Prevention* **16**:4173-4176. doi:10.7314 / apjcp.2015.16.10.4173
- Chaisiri K, Jollivet C, Della Rossa P, Sanguankiat S, Wattanakulpanich D, Lajaunie C, Binot A, Tanita M, Rattanapikul S, Sutdan D, Morand S, Ribas A. 2018. Parasitic infections in relation to practices and knowledge in a rural village in Northern Thailand with emphasis on fish-borne trematode infection. *Epidemiology & Infection* **147**:1. doi:10.1017/S0950268818002996
- Charoensuk L, Subrungruang I, Mungthin M, Pinlaor S, Suwannahitatorn P. 2019. Comparison of stool examination techniques to detect *Opisthorchis viverrini* in low intensity infection. *Acta Tropica* **191**:13-16. doi:10.1016/j.actatropica.2018.12.018
- Chuangchaiya S, Laoprom N, Idris ZM. 2019. Prevalence and associated risk factors of *Opisthorchis viverrini* infections in rural communities along the Nam Kam River of Northeastern Thailand. *Tropical Biomedicine* **1**:81-93. URL: <http://msptm.org/files/Vol36No1/081-093-Chuangchaiya-S.pdf>
- Chuong NV, Tuan BV. 2011. Infection status of *O. viverrini* in Đak Môn commune, ĐakGlei district, Kon Tum province. *Practice Medicine* **796**:165-168. (in Vietnamese)
- Chuong NV, Tuan BV. 1994. Report on parasitic worm infection in Quang Nam-Da Nang provinces. *Malaria Parasit Dis Prevent Bull* **3**:69. (in Vietnamese)
- Chuong NV, Tuan BV, Chau LV. 2000. Research on *Opisthorchis viverrini* in the coastal plain of central Vietnam. Summary record of scientific research works 1996-2000. *National Institute of Malariology, Parasitology and Entomology, Vietnam* **1**:628-635. (in Vietnamese)
- Chuong NV, Tuan BV, Chau LV. 1997. Several epidemiological characteristics of *Opisthorchis viverrini*. *Malaria Parasit Dis Prevent Bull* **2**:85-90. (in Vietnamese)
- Chuong NV, Tuan BV, Quang HH. 2014. The situation and risk factors of liver fluke infection *Opisthorchis viverrini* in human at two communes in Quang Tri province. *TP. Ho Chi Minh Medicine* **18**:525-532. (in Vietnamese)
- Dang TC, Yajima A, Nguyen VK, Montresor A. 2008. Prevalence, intensity and risk factors for clonorchiasis and possible use of questionnaires to detect individuals at risk in northern Vietnam. *Transactions of the Royal Society of Tropical Medicine and Hygiene* **102**:1263-1268. doi:10.1016/j.trstmh.2008.06.002
- Dao TT, Bui TV, Abatih EN, Gabriel S, Nguyen TT, Huynh QH, Nguyen CV, Dorny P. 2016. *Opisthorchis viverrini* infections and associated risk factors in a lowland area of Binh Dinh Province, Central Vietnam. *Acta Tropica* **157**:151-157. doi:10.1016/j.actatropica.2016.01.029
- De NV, Dat DT, Chau LV. 1997. Investigation results of intestinal helminth infection in the community of several places along the Srepok River (1996-1997). *Pract Health Magazine* **10**:4-8. (in Vietnamese)
- De NV, Lam KT, Chau LV. 1996. Liver fluke infection and changes of its infection rates after specific treatment. Summary Record of Scientific Research Works 1991-1996. National Institute of Malariology. *Parasitology and Entomology* **2**:69-77. (in Vietnamese)
- De NV, Lam KT, Chau LV. 1998. Study on fluke and tapeworm diseases. *Malaria Parasit Dis Prevent Bull* **2**:29-33. (in Vietnamese)
- De NV, Le TH. 2011. Human infections of fish-borne trematodes in Vietnam: prevalence and molecular specific identification at an endemic commune in Nam Dinh province. *Experimental Parasitology*

129:355-361. doi:10.1016/j.exppara.2011.09.005

Doanh PN, Nawa Y. 2016. *Clonorchis sinensis* and *Opisthorchis spp.* in Vietnam: current status and prospects. *Transactions of the Royal Society of Tropical Medicine and Hygiene* **110**:13-20. doi:10.1093/trstmh/trv103

Doi R, Itoh M, Chakhatrakan S, Uga S. 2017. Epidemiological Investigation of Parasitic Infection of Schoolchildren from Six Elementary Schools in Sakon Nakhon Province, Thailand. *Kobe Journal of Medical Sciences* **62**:E120-E128. JaLCDOI:10.24546/81009703

Duenngai K, Sithithaworn P, Rudrappa UK, Iddya K, Laha T, Stensvold CR, Strandgaard H, Johansen MV. 2008. Improvement of PCR for detection of *Opisthorchis viverrini* DNA in human stool samples. *Journal of Clinical Microbiology* **46**:366-368. doi:10.1128/JCM.01323-07

Echaubard P, Sripan B, Mallory FF, Wilcox BA. 2016. The role of evolutionary biology in research and control of liver flukes in Southeast Asia. *Infection, Genetics and Evolution* **43**:381-397. doi:10.1016/j.meegid.2016.05.019

Eom KS, Yong TS, Sohn WM, Chai JY, Min DY, Rim HJ, Jeon HK, Banoung V, Insisiengmay B, Phommasack B. 2014. Prevalence of helminthic infections among inhabitants of Lao PDR. *The Korean journal of parasitology* **52**:51-56. doi:10.3347/kjp.2014.52.1.51

Erlanger TE, Sayasone S, Krieger GR, Kaul S, Sananikhom P, Tanner M, Odermatt P, Utzinger J. 2008. Baseline health situation of communities affected by the Nam Theun 2 hydroelectric project in central Lao PDR and indicators for monitoring. *International Journal of Environmental Health Research* **18**:223-242. doi:10.1080/09603120701757815

Feldmeier H, Hazay M, Sato M, Tiengkham P, Nishimoto F, Jiang H, Sopraseuth V, Moji K. 2016. Morbidity assessment of *Opisthorchis viverrini* infection in rural Laos: I. Parasitological, clinical, ultrasonographical and biochemical findings. *Tropical Medicine and Health* **44**:12. doi:10.1186/s41182-016-0012-y

Ferrer A, Sayasone S, Vounatsou P, Vonghachack Y, Bouakhasith D, Vogt S, Glaser R, Utzinger J, Akkhavong K, Odermatt P. 2012. Spatial distribution of, and risk factors for, *Opisthorchis viverrini* infection in southern Lao PDR. *PLOS Neglected Tropical Diseases* **6**:e1481. doi:10.1371/journal.pntd.0001481

Giboda M, Dittrich O, Scholz T, Viengsay T, Bouaphanh S. 1991. Current status of food-borne parasitic zoonoses in Laos. *The Southeast Asian journal of tropical medicine and public health* **22 Suppl**:56.

Haswell-Elkins MR, Elkins DB, Sithithaworn P, Treesarawat P, Kaewkes S. 1991. Distribution patterns of *Opisthorchis viverrini* within a human community. *Parasitology* **103**:97-101. doi:10.1017/S0031182000059333

Haswell-Elkins MR, Mairiang E, Mairiang P, Chaiyakum J, Chamadol N, Loapaiboon V, Sithithaworn P, Elkins DB. 1994. Cross-sectional study of *Opisthorchis viverrini* infection and cholangiocarcinoma in communities within a high-risk area in northeast Thailand. *International Journal of Cancer* **59**:505. doi:10.1002/ijc.2910590412

Htun N, Odermatt P, Paboriboune P, Sayasone S, Vongsakid M, Phimolsarn-Nusith V, Tran XD, Ounnavong PS, Andriama-Hefaso N, Senvanpan ND, Homsana A, Lianosay B, Xayavong D, Robinson DR, Bounsavath P, Prasayasith PP, Syphan SD, Lu YX, Thilakoun K, Xaiyaphet XS, Vongngakesone PT, Eze IC, Imboden M, Sripan B, Reinharz D, Probst-Hensch N. 2018. Association between helminth infections and diabetes mellitus in adults from the Lao People's Democratic Republic: a cross-sectional study. *Infectious Diseases of Poverty* **7**:105. doi:10.1186/s40249-018-0488-2

Hung NM, Dung DT, Lan Anh NT, Van PT, Thanh BN, Van Ha N, Van Hien H, Canh LX. 2015. Current

status of fish-borne zoonotic trematode infections in Gia Vien district, Ninh Binh province, Vietnam. *Parasites & Vectors* **8**:21. doi:10.1186/s13071-015-0643-6

Jadsri S, Noojoy A. 1999. A study of liver fluke infection in Sukhothai, Thailand. *The Southeast Asian Journal of Tropical Medicine and Public Health* **30**:588-593. PMID: 10774677

Joob B, Wiwanitkit V. 2017. Prevalence of opisthorchiasis detected by stool examination: Relationship to Chi River system in Thailand. *Annals of Tropical Medicine and Public Health* **10**:293. doi:10.4103/1755-6783.205531

Kaewpitoon N, Kaewpitoon SJ, Meererksom T, Chan-Aran S, Sangwalee W, Kujapun J, Norkaew J, Chuatanam J, Ponpimai S, Pothipim M, Padchasuwan N, Tongtawee T, Matrakool L, Panpimanmas S, Loyd RA, Wakkhuwattapong P. 2018. Detection of Risk Groups for Carcinogenic Liver Fluke Infection by Verbal Screening Questionnaire Using a Mobile Application. *Asian Pacific Journal of Cancer Prevention* **19**:2013-2019. doi:10.22034/APJCP.2018.19.7.2013

Kaewpitoon SJ, Kaewpitoon N, Rujirakul R, Ueng-Arporn N, Matrakool L, Tongtawee T. 2015. The Carcinogenic Liver Fluke *Opisthorchis viverrini* among Rural Community People in Northeast Thailand: a Cross-Sectional Descriptive Study using Multistage Sampling Technique. *Asian Pacific Journal of Cancer Prevention* **16**:7803-7807. doi:10.7314/apjcp.2015.16.17.7803

Kaewpitoon SJ, Kaewpitoon N, Rujirakul R, Wakkhuwattapong P, Matrakool L, Tongtawee T, Loyd RA, Norkaew J, Kujapun J, Chavengkun W, Ponphimai S, Polsripradist P, Eksanti T, Phatisena T. 2016. Nurses and Television as Sources of Information Effecting Behavioral Improvement Regarding Liver Flukes in Nakhon Ratchasima Province, Thailand. *Asian Pacific Journal of Cancer Prevention* **17**:1097-1102. doi:10.7314/apjcp.2016.17.3.1097

Kaewpitoon SJ, Loyd RA, Rujirakul R, Wakkhuwattapong P, Tongtawee T, Matrakool L, Panpimanmas S, Kompor P, Norkaew J, Kujapun J, Chavengkun W, Ponphimai S, Pothipim M, Phatisena T, Eksanti T, Polsripradist P, Padchasuwan N, Benjaoran F, Namwichaisirikul N, Kuebkuntod P, Kaewpitoon N. 2016. Primary Care Intervention to Prevent and Control Cholangiocarcinoma: Lesson from Nakhon Ratchasima, Thailand. *Journal of the Medical Association of Thailand* **99** Suppl 7:S144-S150. PMID: 29901974

Kaewpitoon SJ, Ponphimai S, Pechdee P, Thueng-in K, Khiaowichit J, Meererksom T, Wakkhuwattapong P, Bukkhunthod P, Leng M, Namhong T, Taweepakdechot A, Yardcharoen N, Srithongklang W, Keeratibharat N, Chansangrat J, Kaewpitoon N. 2019. The prevalence of intestinal helminth infection in rural subdistricts of northeastern Thailand. *Tropical Biomedicine* **1**:152-164. URL: <http://cmuir.cmu.ac.th/jspui/handle/6653943832/59386>

Kaewpitoon SJ, Rujirakul R, Kaewpitoon N. 2012. Prevalence of *Opisthorchis viverrini* infection in Nakhon Ratchasima province, Northeast Thailand. *Asian Pacific Journal of Cancer Prevention* **13**:5245-5249. doi:10.7314/apjcp.2012.13.10.5245

Kaewpitoon SJ, Rujirakul R, Loyd RA, Panpimanmas S, Matrakool L, Tongtawee T, Kompor P, Norkaew J, Chavengkun W, Kujapun J, Polphimai S, Phatisena T, Eksanti T, Polsripradist P, Padchasuwan N, Kaewpitoon N. 2016. Re-Examination of *Opisthorchis viverrini* in Nakhon Ratchasima Province, Northeastern Thailand, Indicates Continued Needs for Health Intervention. *Asian Pacific Journal of Cancer Prevention* **17**:231-234. doi:10.7314/apjcp.2016.17.1.231

Kaewpitoon SJ, Rujirakul R, Ueng-Arporn N, Matrakool L, Namwichaisirikul N, Churproong S, Wongkaewpothong P, Nimkuntod P, Sripa B, Kaewpitoon N. 2012. Community-based cross-sectional study of carcinogenic human liver fluke in elderly from Surin province, Thailand. *Asian Pacific Journal of Cancer Prevention* **13**:4285-4288. doi: 10.7314/apjcp.2012.13.9.4285

Kaewpitoon SJ, Rujirakul R, Wakuwattapong P, Matrakool L, Tongtawee T, Panpimanmas S, Kujapun J, Norkaew J, Photipim M, Ponphimai S, Chavengkun W, Kompor P, Padchasuwan N, Sawaspol S, Phandee MC, Phandee W, Phanurak W, Kaewpitoon N. 2016. Overweight Relation to Liver Fluke Infection among Rural Participants from 4 Districts of Nakhon Ratchasima Province, Thailand. *Asian Pacific Journal of Cancer Prevention* **17**:2565-2571. PMID: 27268631

Kaewpitoon SJ, Rujirakul R, Wakuwattapong R, Matrakool L, Tongtawee T, Panpimanmas S, Pengsaa P, Jomkoa D, Joosiri A, Kaewpitoon N. 2016. *Opisthorchis viverrini* Infection Among People in the Border Areas of Three Provinces, Northeast of Thailand. *Asian Pacific Journal of Cancer Prevention* **17**:2973-2977. PMID: 27356720

Kaewpitoon SJ, Sawaspol S, Phandee MC, Phandee W, Phanurak W, Rujirakul R, Wakuwattapong P, Matrakool L, Tongtawee T, Panpimanmas S, Benjaoran F, Namvichaisirikul N, Jamkoa D, Joosiri A, Kaewpitoon N. 2016. Analysis of Risk Areas of *Opisthorchis viverrini* in Rural Communities by Using SUT-OV-001. *Journal of the Medical Association of Thailand* **99 Suppl 7**:S138-S143. PMID: 29901970

Kasuya S, Khamboonruang C, Amano K, Murase T, Araki H, Kato Y, Kumada Y, Koyama A, Higuchi M, Nakamura J. 1989. Intestinal parasitic infections among schoolchildren in Chiang Mai, northern Thailand: an analysis of the present situation. *The Journal of Tropical Medicine and Hygiene* **92**:360. PMID: 2810455

Khampitak T, Knowles J, Yongvanit P, Sithithaworn P, Tangrassameeprasert R, Boonsiri P, Satarug S. 2006. Thiamine deficiency and parasitic infection in rural Thai children. *The Southeast Asian Journal of Tropical Medicine and Public Health* **37**:441. PMID: 17120961

Khieu V, Schar F, Marti H, Bless PJ, Char MC, Muth S, Odermatt P. 2014. Prevalence and risk factors of *Strongyloides stercoralis* in Takeo Province, Cambodia. *Parasites & Vectors* **7**:221. doi:10.1186/1756-3305-7-221

Khieu V, Schär F, Marti H, Sayasone S, Duong S, Muth S, Odermatt P. 2013. Diagnosis, treatment and risk factors of *Strongyloides stercoralis* in schoolchildren in Cambodia. *PLOS Neglected Tropical Diseases* **7**:e2035. doi:10.1371/journal.pntd.0002035

Kim JY, Yong TS, Rim HJ, Chai JY, Min DY, Eom KS, Sohn WM, Lim JH, Choi D, Insisiengmay S, Phommasack B, Insisiengmay B. 2018. Ultrasonographic investigation of cholangiocarcinoma in Lao PDR. *Acta Tropica* **182**:128-134. doi:10.1016/j.actatropica.2018.02.031

Kobayashi J, Chinen K, Samidt S, Higa K, Chinen M, Sato Y, Yoshida C. 1999. Prevalence of intestinal parasite infection in toul roka village, phnom penh municipality, Cambodia. *Japanese Journal of Tropical Medicine and Hygiene* **27**:517-519. doi:10.2149/tmh1973.27.517

Kobayashi J, Vannachone B, Sato Y, Manivong K, Nambanya S, Inthakone S. 2000. An epidemiological study on *Opisthorchis viverrini* infection in Lao villages. *The Southeast Asian Journal of Tropical Medicine and Public Health* **31**:128-132. PMID: 11023079

Kobayashi J, Vannachone B, Xeutvongsa A, Manivong K, Ogawa S, Sato Y, Pholsena K. 1996. Prevalence of intestinal parasitic infection among children in two villages in Lao PDR. *The Southeast Asian Journal of Tropical Medicine and Public Health* **27**:562-565. PMID: 9185270

Laoprom N, Laithavewat L, Kopolrat K, Kiatsopit N, Kaewkes S, Chantalux S, Mongkolsin C, Chanmaha B, Andrews RH, Petney TN, Sithithaworn P. 2016. Evaluation of a commercial stool concentrator kit compared to direct smear and formalin-ethyl acetate concentration methods for diagnosis of parasitic infection with special reference to *Opisthorchis viverrini* sensu lato in Thailand. *The Southeast Asian Journal of Tropical Medicine and Public Health* **47**:890-900. PMID: 29620342

Laoraksawong P, Sanpool O, Rodpai R, Thanchomnang T, Kanarkard W, Maleewong W, Kraiklang R,

- Intapan PM. 2018. Current high prevalences of *Strongyloides stercoralis* and *Opisthorchis viverrini* infections in rural communities in northeast Thailand and associated risk factors. *BMC Public Health* **18**:940. doi:10.1186/s12889-018-5871-1
- Laymanivong S, Hangvanthong B, Insisiengmay B, Vanisaveth V, Laxachack P, Jongthawin J, Sanpool O, Thanchomnang T, Sadaow L, Phosuk I, Rodpai R, Maleewong W, Intapan PM. 2016. First molecular identification and report of genetic diversity of *Strongyloides stercoralis*, a current major soil-transmitted helminth in humans from Lao People's Democratic Republic. *Parasitology Research* **115**:2973-2980. doi:10.1007/s00436-016-5052-z
- Laymanivong S, Hangvanthong B, Keokhamphavanh B, Phommasansak M, Phinmaland B, Sanpool O, Maleewong W, Intapan PM. 2014. Current status of human hookworm infections, *ascariasis*, *trichuriasis*, *schistosomiasis mekongi* and other trematodiasis in Lao People's Democratic Republic. *The American Journal of Tropical Medicine and Hygiene* **90**:667-669. doi:10.4269/ajtmh.13-0636
- Lee KJ, Bae YT, Kim DH, Deung YK, Ryang YS, Kim HJ, Im KI, Yong TS. 2002. Status of intestinal parasites infection among primary school children in Kampongcham, Cambodia. *The Korean journal of parasitology* **40**:153-155. doi:10.3347/kjp.2002.40.3.153
- León TM, Porco TC, Kim CS, Kaewkes S, Kaewkes W, Sripa B, Spear RC. 2018. Modeling liver fluke transmission in northeast Thailand: Impacts of development, hydrology, and control. *Acta Tropica* **188**:101-107. doi:10.1016/j.actatropica.2018.08.008
- Lovis L, Mak TK, Phongluxa K, Soukhathammavong P, Sayasone S, Akkhavong K, Odermatt P, Keiser J, Felger I. 2009. PCR Diagnosis of *Opisthorchis viverrini* and *Haplorchis taichui* Infections in a Lao Community in an area of endemicity and comparison of diagnostic methods for parasitological field surveys. *Journal of Clinical Microbiology* **47**:1517-1523. doi:10.1128/JCM.02011-08
- Mairiang E, Laha T, Bethony JM, Thinkhamrop B, Kaewkes S, Sithithaworn P, Tesana S, Loukas A, Brindley PJ, Sripa B. 2012. Ultrasonography assessment of hepatobiliary abnormalities in 3359 subjects with *Opisthorchis viverrini* infection in endemic areas of Thailand. *Parasitology International* **61**:208-211. doi:10.1016/j.parint.2011.07.009
- Maleewong W, Intapan P, Wongwajana S, Sithithaworn P, Pipitgool V, Wongkham C, Daenseegaew W. 1992. Prevalence and intensity of *Opisthorchis viverrini* in rural community near the Mekong River on the Thai-Laos border in northeast Thailand. *Journal of the Medical Association of Thailand* **75**:231. PMID: 1402447
- Miyamoto K, Kirinoki M, Matsuda H, Hayashi N, Chigusa Y, Sinuon M, Chuor CM, Kitikoon V. 2014. Field survey focused on *Opisthorchis viverrini* infection in five provinces of Cambodia. *Parasitology International* **63**:366-373. doi:10.1016/j.parint.2013.12.003
- Nakamura S. 2017. Present Situation of Opisthorchiasis in Vientiane Capital, Lao Peoples' Democratic Republic. *Nihon eiseigaku zasshi. Japanese journal of hygiene* **72**:101-105. doi:10.1265/jjh.72.101
- Niamnuy N, Kaewthamasorn M, Congpuong K, Phaytanavanh B, Lohsoonthorn V. 2016. Prevalence and associated risk factors of intestinal parasites in humans and domestic animals across borders of Thailand and Lao PDR: focus on hookworm and threadworm. *The Southeast Asian Journal of Tropical Medicine and Public Health* **47**:901-911. PMID: 29620343
- Nithikathkul C, Pumidonming W, Wannapinyosheep S, Tesana S, Chairapathong S, Wongsawad C. 2009. *Opisthorchis viverrini* infection in minute intestinal fluke endemic areas of Chiang Mai Province, Thailand. *Asian Biomedicine* **3**:187-191. URL: <http://cmuir.cmu.ac.th/jspui/handle/6653943832/59386>
- Nontasut P, Muennoo C, Sa-nguankiat S, Fongsri S, Vichit A. 2005. Prevalence of strongyloides in Northern Thailand and treatment with ivermectin vs albendazole. *The Southeast Asian Journal of*

- Tropical Medicine and Public Health* **36**:442-444. PMID: 15916052
- Ong X, Wang YC, Sithithaworn P, Namsanor J, Taylor D, Laithavewat L. 2016. Uncovering the Pathogenic Landscape of Helminth (*Opisthorchis viverrini*) Infections: A Cross-Sectional Study on Contributions of Physical and Social Environment and Healthcare Interventions. *PLOS Neglected Tropical Diseases* **10**:e5175. doi:10.1371/journal.pntd.0005175
- Pauly M, Sayasinh K, Muller CP, Sayasone S, Black AP. 2019. High prevalence of helminth infections in mother-child pairs from three central provinces of Lao People's Democratic Republic. *Parasite Epidemiology and Control* **7**:e122. doi:10.1016/j.parepi.2019.e00122
- Phimpraphai W, Tangkawattana S, Sereerak P, Kasemsuwan S, Sripa B. 2017. Social network analysis of food sharing among households in opisthorchiasis endemic villages of Lawa Lake, Thailand. *Acta Tropica* **169**:150-156. doi:10.1016/j.actatropica.2017.02.001
- Phongluxa K, Xayaseng V, Vonghachack Y, Akkhavong K, van Eeuwijk P, Odermatt P. 2013. Helminth infection in southern Laos: high prevalence and low awareness. *Parasites & Vectors* **6**:328. doi:10.1186/1756-3305-6-328
- Piangjai S, Sukontason K, Sukontason KL. 2003. Intestinal parasitic infections in hill-tribe schoolchildren in Chiang Mai, northern Thailand. *The Southeast Asian Journal of Tropical Medicine and Public Health* **34 Suppl 2**:90-93. PMID: 19230577
- Prakobwong S, Gunnula W, Chaipibool S, Nimala B, Sangthopo J, Sirivetthumrong N, Ribas A. 2017. Epidemiology of *Opisthorchis viverrini* in an endemic area of Thailand, an integrative approach. *Helminthologia* **54**:298-306. doi:10.1515/helm-2017-0036
- Prakobwong S, Suwannatrai A, Sancomerang A, Chaipibool S, Siriwechtumrong N. 2017. A Large Scale Study of the Epidemiology and Risk Factors for the Carcinogenic Liver Fluke *Opisthorchis viverrini* in Udon Thani Province, Thailand. *Asian Pacific Journal of Cancer Prevention* **18**:2853-2860. doi:10.22034/APJCP.2017.18.10.2853
- Pumidonming W, Katahira H, Igarashi M, Salman D, Abdelbaset AE, Sangkao K. 2018. Potential risk of a liver fluke *Opisthorchis viverrini* infection brought by immigrants from prevalent areas: A case study in the lower Northern Thailand. *Acta Tropica* **178**:213-218. doi:10.1016/j.actatropica.2017.11.023
- Pungpak S, Chalermrut K, Harinasuta T, Viravan C, Schelp PF, Hempfling A, Schlattmann P, Bunnag D. 1994. *Opisthorchis viverrini* infection in Thailand: symptoms and signs of infection--a population-based study. *Transactions of the Royal Society of Tropical Medicine and Hygiene* **88**:561-564. doi:10.1016/0035-9203(94)90164-3
- Pungpak S, Sornmani S, Suntharasamai P, Vivatanasesth P. 1989. Ultrasonographic study of the biliary system in opisthorchiasis patients after treatment with praziquantel. *The Southeast Asian Journal of Tropical Medicine and Public Health* **20**:157. PMID: 2672363
- Radomyos B, Wongsaroj T, Wilairatana P, Radomyos P, Praevanich R, Meesomboon V, Jongsuksuntikul P. 1998. Opisthorchiasis and intestinal fluke infections in northern Thailand. *The Southeast Asian Journal of Tropical Medicine and Public Health* **29**:123-127. PMID: 9740284
- Rangsin R, Mungthin M, Taamasri P, Mongklon S, Aimpun P, Naaglor T, Leelayoova S. 2009. Incidence and risk factors of *Opisthorchis viverrini* infections in a rural community in Thailand. *The American Journal of Tropical Medicine and Hygiene* **81**:152-155. PMID: 19556581
- Ribas A, Jollivet C, Morand S, Thongmalayvong B, Somphavong S, Siew C, Ting P, Suputtamongkol S, Saensombath V, Sanguankiat S, Tan B, Paboriboune P, Akkhavong K, Chaisiri K. 2017. Intestinal Parasitic Infections and Environmental Water Contamination in a Rural Village of Northern Lao PDR. *The Korean Journal of Parasitology* **55**:523-532. doi:10.3347/kjp.2017.55.5.523

- Rim HJ, Chai JY, Min DY, Cho SY, Eom KS, Hong SJ, Sohn WM, Yong TS, Deodato G, Standgaard H, Phommasack B, Yun CH, Hoang EH. 2003. Prevalence of intestinal parasite infections on a national scale among primary schoolchildren in Laos. *Parasitology Research* **91**:267-272. doi:10.1007/s00436-003-0963-x
- Ruankham W, Bunchu N, Koychusakun P. 2014. Prevalence of helminthic infections and risk factors in villagers of Nanglae Sub-District, Chiang Rai Province, Thailand. *Journal of the Medical Association of Thailand* **97 Suppl 4**:S29-S35. PMID: 24851562
- Rujirakul R, Ueng-arporn N, Kaewpitoon SJ, Loyd RA, Kaewthani S, Kaewpitoon N. 2015. Risk Areas of Liver Flukes in Surin Province of Thailand using Geographic Information System. *Journal of the Medical Association of Thailand* **98 Suppl 4**:S22-S26. PMID: 26201130
- Saengsawang P, Promthet S, Bradshaw P. 2013. Infection with *Opisthorchis viverrini* and use of praziquantel among a working-age population in northeast Thailand. *Asian Pacific Journal of Cancer Prevention* **14**:2963-2966. doi:10.7314/apjcp.2013.14.5.2963
- Saengsawang P, Promthet S, Bradshaw P. 2012. Prevalence of OV infection in Yasothon Province, Northeast Thailand. *Asian Pacific Journal of Cancer Prevention* **13**:3399-3402. doi:10.7314/apjcp.2012.13.7.3399
- Saenna P, Hurst C, Echaubard P, Wilcox BA, Sripa B. 2017. Fish sharing as a risk factor for *Opisthorchis viverrini* infection: evidence from two villages in north-eastern Thailand. *Infectious Diseases of Poverty* **6**:66. doi:10.1186/s40249-017-0281-7
- Saiyachak K, Tongsotsang S, Saenrueang T, Moore MA, Promthet S. 2016. Prevalence and Factors Associated with *Opisthorchis viverrini* Infection in Khammouane Province, Lao PDR. *Asian Pacific Journal of Cancer Prevention* **17**:1589-1593. doi:10.7314/apjcp.2016.17.3.1589
- Salao K, Spofford EM, Price C, Mairiang E, Suttiprapa S, Wright HL, Sripa B, Edwards SW. 2020. Enhanced neutrophil functions during *Opisthorchis viverrini* infections and correlation with advanced periductal fibrosis. *International Journal for Parasitology* **50**:145-152. doi:https://doi.org/10.1016/j.ijpara.2019.11.007
- Saowakontha S, Pipitgool V, Pariyanonda S, Tesana S, Rojsathaporn K, Intarakhao C. 1993. Field trials in the control of *Opisthorchis viverrini* with an integrated programme in endemic areas of northeast Thailand. *Parasitology* **106 (Pt 3)**:283-288. doi:10.1017/s0031182000075107
- Sato M, Pongvongsa T, Sanguankiat S, Yoonuan T, Dekumyoy P, Kalambaheti T, Keomoungkhoun M, Phimmayoi I, Boupha B, Moji K, Waikagul J. 2010. Copro-DNA diagnosis of *Opisthorchis viverrini* and *Haplorchis taichui* infection in an endemic area of Lao PDR. *The Southeast Asian Journal of Tropical Medicine and Public Health* **41**:28-35. PMID: 20578479
- Sato M, Pongvongsa T, Sanguankiat S, Yoonuan T, Kobayashi J, Boupha B, Nishimoto F, Moji K, Sato MO, Waikagul J. 2015. Patterns of trematode infections of *Opisthorchis viverrini* (Opisthorchiidae) and *Haplorchis taichui* (Heterophyidae) in human populations from two villages in Savannakhet Province, Lao PDR. *Journal of Helminthology* **89**:439-445. doi:10.1017/S0022149X14000261
- Sayasone S, Mak TK, Vanmany M, Rasphone O, Vounatsou P, Utzinger J, Akkhavong K, Odermatt P. 2011. Helminth and intestinal protozoa infections, multiparasitism and risk factors in Champasack province, Lao People's Democratic Republic. *PLOS Neglected Tropical Diseases* **5**:e1037. doi:10.1371/journal.pntd.0001037
- Sayasone S, Odermatt P, Phoumindr N, Vongsaravane X, Sensombath V, Phetsouvanh R, Choulamany X, Strobel M. 2007. Epidemiology of *Opisthorchis viverrini* in a rural district of southern Lao PDR. *Transactions of the Royal Society of Tropical Medicine and Hygiene* **101**:40-47.

doi:10.1016/j.trstmh.2006.02.018

Sayasone S, Utzinger J, Akkhavong K, Odermatt P. 2015. Multiparasitism and intensity of helminth infections in relation to symptoms and nutritional status among children: a cross-sectional study in southern Lao People's Democratic Republic. *Acta Tropica* **141**:322-331. doi:10.1016/j.actatropica.2014.09.015

Schär F, Inpankaew T, Traub RJ, Khieu V, Dalsgaard A, Chimnoi W, Chhoun C, Sok D, Marti H, Muth S, Odermatt P. 2014. The prevalence and diversity of intestinal parasitic infections in humans and domestic animals in a rural Cambodian village. *Parasitology International* **63**:597-603. doi:https://doi.org/10.1016/j.parint.2014.03.007

Schurer JM, Ramirez V, Kyes P, Tanee T, Patarapadungkit N, Thamsenanupap P, Trufan S, Grant ET, Garland-Lewis G, Kelley S, Nueaitong H, Kyes RC, Rabinowitz P. 2019. Long-Tailed Macaques (*Macaca fascicularis*) in Urban Landscapes: Gastrointestinal Parasitism and Barriers for Healthy Coexistence in Northeast Thailand. *The American Journal of Tropical Medicine and Hygiene* **100**:357-364. doi:10.4269/ajtmh.18-0241

Sinuon M, Anantaphruti MT, Socheat D. 2003. Intestinal helminthic infections in schoolchildren in Cambodia. *The Southeast Asian Journal of Tropical Medicine and Public Health* **34**:254-258. PMID: 12971545

Sithithaworn P, Andrews RH, Nguyen VD, Wongsaroj T, Sinuon M, Odermatt P, Nawa Y, Liang S, Brindley PJ, Sripa B. 2012. The current status of opisthorchiasis and clonorchiasis in the Mekong Basin. *Parasitology International* **61**:10-16. doi:10.1016/j.parint.2011.08.014

Sithithaworn P, Sithithaworn J, Srisawangwong T, Tesana S, Daenseekaew W, Fujimaki Y, Ando K. 2003. Epidemiology of *Strongyloides stercoralis* in north-east Thailand: application of the agar plate culture technique compared with the enzyme-linked immunosorbent assay. *Transactions of the Royal Society of Tropical Medicine and Hygiene* **97**:398-402. doi:10.1016/S0035-9203(03)90069-1

Sithithaworn P, Sukavat K, Vannachone B, Sophonphong K, Ben-Embarek P, Petney T, Andrews R. 2006. Epidemiology of food-borne trematodes and other parasite infections in a fishing community on the Nam Ngum reservoir, Lao PDR. *The Southeast Asian journal of tropical medicine and public health* **37**:1083. PMID: 17333758

Sohn W, Jung B, Hong S, Lee K, Park J, Kim H, Cho S, Htoon TT, Tin HH, Chai J. 2019. Low-Grade Endemicity of Opisthorchiasis, Yangon, Myanmar. *Emerging Infectious Diseases* **25**:1435-1437. doi:10.3201/eid2507.190495

Sohn WM, Kim HJ, Yong TS, Eom KS, Jeong HG, Kim JK, Kang AR, Kim MR, Park JM, Ji SH, Sinuon M, Socheat D, Chai JY. 2011. *Echinostoma ilocanum* infection in Oddar Meanchey Province, Cambodia. *The Korean journal of parasitology* **49**:187-190. doi:10.3347/kjp.2011.49.2.187

Sohn WM, Shin EH, Yong TS, Eom KS, Jeong HG, Sinuon M, Socheat D, Chai JY. 2011. Adult *Opisthorchis viverrini* flukes in humans, Takeo, Cambodia. *Emerging Infectious Diseases* **17**:1302-1304. doi:10.3201/eid1707.102071

Sohn WM, Yong TS, Eom KS, Min DY, Lee D, Jung BK, Banouvong V, Insisiengmay B, Phommasack B, Rim HJ, Chai JY. 2014. Prevalence of *Haplorchis taichui* among humans and fish in Luang Prabang Province, Lao PDR. *Acta Tropica* **136**:74-80. doi:10.1016/j.actatropica.2014.04.020

Sohn WM, Yong TS, Eom KS, Pyo KH, Lee MY, Lim H, Choe S, Jeong HG, Sinuon M, Socheat D, Chai JY. 2012. Prevalence of *Opisthorchis viverrini* infection in humans and fish in Kratie Province, Cambodia. *Acta Tropica* **124**:215-220. doi:10.1016/j.actatropica.2012.08.011

Songserm N, Promthet S, Wiangnon S, Sithithaworn P. 2012. Prevalence and co-infection of intestinal

parasites among thai rural residents at high-risk of developing cholangiocarcinoma: a cross-sectional study in a prospective cohort study. *Asian Pacific Journal of Cancer Prevention* **13**:6175-6179. doi:10.7314/apjcp.2012.13.12.6175

Sornlorm K, Loahasiriwong W, Sithithaworn P, Thinkhamrop W. 2019. Influence of geographic, knowledge and behavioral factors on *Opisthorchis viverrini* infection in the Northeast of Thailand. *Asian Pacific Journal of Tropical Medicine* **12**:499-506. doi:10.4103/1995-7645.271289

Sornmani S, Schelp FP, Vivatanasesth P, Patihatakorn W, Impand P, Sitabuttra P, Worasan P, Preuksaraj S. 1984. A pilot project for controlling *O. viverrini* infection in Nong Wai, Northeast Thailand, by applying praziquantel and other measures. *Arzneimittel-Forschung* **34**:1231. PMID: 6542402

Sornmani S, Schelp FP, Vivatanasesth P, Pongpaew P, Sritabuttra P, Supawan V, Vudhivai N, Egormaiaphol S, Harinasuta C. 1981. An investigation of the health and nutritional status of the population in the Nam Pong Water Resource Development Project, northeast Thailand. *Annals of tropical medicine and parasitology* **75**:335. doi: 10.1080/00034983.1981.11687448

Sornmani S, Vivatanasesth P, Impand P, Phatihatakorn W, Sitabuttra P, Schelp FP. 1984. Infection and re-infection rates of opisthorchiasis in the water resource development area of Nam Pong project, Khon Kaen Province, northeast Thailand. *Annals of tropical medicine and parasitology* **78**:649-656. doi:10.1080/00034983.1984.11811877

Soukhathammavong P, Odermatt P, Sayasone S, Vonghachack Y, Vounatsou P, Hatz C, Akkhavong K, Keiser J. 2011. Efficacy and safety of mefloquine, artesunate, mefloquine-artesunate, tribendimidine, and praziquantel in patients with *Opisthorchis viverrini*: a randomised, exploratory, open-label, phase 2 trial. *The Lancet Infectious Diseases* **11**:110-118. doi:10.1016/S1473-3099(10)70250-4

Sriamporn S, Pisani P, Pipitgool V, Suwanrungruang K, Kamsa-ard S, Parkin DM. 2004. Prevalence of *Opisthorchis viverrini* infection and incidence of cholangiocarcinoma in Khon Kaen, Northeast Thailand. *Tropical Medicine & International Health* **9**:588-594. doi:10.1111/j.1365-3156.2004.01234.x

Sripa B, Tangkawattana S, Laha T, Kaewkes S, Mallory FF, Smith JF, Wilcox BA. 2015. Toward integrated opisthorchiasis control in northeast Thailand: the Lawa project. *Acta Tropica* **141**:361-367. doi:10.1016/j.actatropica.2014.07.017

Sripa B, Tangkawattana S, Sangnikul T. 2017. The Lawa model: A sustainable, integrated opisthorchiasis control program using the EcoHealth approach in the Lawa Lake region of Thailand. *Parasitology International* **66**:346-354. doi:10.1016/j.parint.2016.11.013

Srivatanakul P, Ohshima H, Khlat M, Parkin M, Sukaryodhin S, Brouet I, Bartsch H. 1991. *Opisthorchis viverrini* infestation and endogenous nitrosamines as risk factors for cholangiocarcinoma in Thailand. *International Journal of Cancer* **48**:821-825. doi:10.1002/ijc.2910480606

Srivatanakul P, Parkin DM, Jiang YZ, Khlat M, Kao-Ian UT, Sontipong S, Wild C. 1991. The role of infection by *Opisthorchis viverrini*, *hepatitis B virus*, and aflatoxin exposure in the etiology of liver cancer in Thailand. A correlation study. *Cancer* **68**:2411-2417. doi:10.1002/1097-0142(19911201)68:11<2411::aid-cnrc2820681114>3.0.co;2-0

Strandgaard H, Johansen MV, Aagaard-Hansen J, Petlueng P, Ornbjerg N. 2008. Local perceptions and practices in regard to opisthorchiasis in two villages in Lao PDR. *The Southeast Asian Journal of Tropical Medicine and Public Health* **39**:19-26. PMID: 18567439

Sukontason KL, Sukontason K, Piangjai S, Pungpak S, Radomyos P. 2001. Prevalence of *Opisthorchis viverrini* infection among villagers harboring *Opisthorchis*-like eggs. *The Southeast Asian Journal of Tropical Medicine and Public Health* **32 Suppl 2**:23-26. PMID: 12041596

Sungkasubun P, Siripongsakun S, Akkarachinorate K, Vidhyarkorn S, Worakitsitatorn A, Sricharunrat

- T, Singharuksa S, Chanwat R, Bunchaliew C, Charoenphattharaphesat S, Molek R, Yimyaem M, Sornsamdang G, Soonklang K, Wittayasak K, Auewarakul CU, Mahidol C. 2016. Ultrasound screening for cholangiocarcinoma could detect premalignant lesions and early-stage diseases with survival benefits: a population-based prospective study of 4,225 subjects in an endemic area. *BMC Cancer* **16**:346. doi:10.1186/s12885-016-2390-2
- Suwannahitatorn P, Klomjit S, Naaglor T, Taamasri P, Rangsin R, Leelayoova S, Mungthin M. 2013. A follow-up study of *Opisthorchis viverrini* infection after the implementation of control program in a rural community, central Thailand. *Parasites & Vectors* **6**:188. doi:10.1186/1756-3305-6-188
- Suwannatrai A, Saichua P, Haswell M. 2018. Epidemiology of *Opisthorchis viverrini* Infection. *Advances in Parasitology* **101**:41. doi: 10.1016/bs.apar.2018.05.002
- Tesana S, Srisawangwong T, Sithithaworn P, Itoh M, Phumchaiyothin R. 2007. The ELISA-based detection of anti-*Opisthorchis viverrini* IgG and IgG4 in samples of human urine and serum from an endemic area of north-eastern Thailand. *Annals of Tropical Medicine and Parasitology* **101**:585-591. doi:10.1179/136485907X229068
- Thaewngiew K, Singthong S, Kutchamart S, Tangsawad S, Promthet S, Sailugkum S, Wongba N. 2014. Prevalence and risk factors for *Opisthorchis viverrini* infections in upper Northeast Thailand. *Asian Pacific Journal of Cancer Prevention* **15**:6609-6612. doi: 10.7314/apjcp.2014.15.16.6609
- Tomokawa S, Kobayashi T, Pongvongsa T, Nisayngang B, Kaneda E, Honda S, Moji K, Boupha B. 2012. Risk factors for *Opisthorchis viverrini* infection among schoolchildren in Lao PDR. *The Southeast Asian Journal of Tropical Medicine and Public Health* **43**:574-585. PMID: 23077836
- Traub RJ, Macaranas J, Mungthin M, Leelayoova S, Cribb T, Murrell KD, Thompson RC. 2009. A new PCR-based approach indicates the range of *Clonorchis sinensis* now extends to Central Thailand. *PLOS Neglected Tropical Diseases* **3**:e367. doi:10.1371/journal.pntd.0000367
- Tungtrongchitr A, Chiworaporn C, Praewanich R, Radomyos P, Boitano JJ. 2007. The potential usefulness of the modified Kato thick smear technique in the detection of intestinal sarcocystosis during field surveys. *The Southeast Asian Journal of Tropical Medicine and Public Health* **38**:232-238. PMID: 17539271
- Uengarporn N, Matrakool L, Kaewpitoon SJ, Rujirakul R, Churproong S, Kaewpitoon N. 2016. Nutritional Status among Schoolchildren in the Risk Areas of Liver Fluke Infection, Surin Province, Thailand. *Journal of the Medical Association of Thailand* **99 Suppl 7**:S17-S23. PMID: 29901336
- Upatham ES, Viyanant V, Kurathong S, Brockelman WY, Menaruchi A, Saowakontha S, Intarakhao C, Vajrasthira S, Warren KS. 1982. Morbidity in relation to intensity of infection in *Opisthorchiasis viverrini*: study of a community in Khon Kaen, Thailand. *The American Journal of Tropical Medicine and Hygiene* **31**:1156-1163. doi:10.4269/ajtmh.1982.31.1156
- Upatham ES, Viyanant V, Kurathong S, Rojborwonwitaya J, Brockelman WY, Ardsungnoen S, Lee P, Vajrasthira S. 1984. Relationship between prevalence and intensity of *Opisthorchis viverrini* infection, and clinical symptoms and signs in a rural community in north-east Thailand. *Bulletin of the World Health Organization* **62**:451-461. PMID: 6331907
- Van CD, Dounghawee G, Suttiwapa S, Arimatsu Y, Kaewkes S, Sripa B. 2017. Association between *Opisthorchis viverrini* and *Leptospira spp.* infection in endemic Northeast Thailand. *Parasitology International* **66**:503-509. doi:10.1016/j.parint.2016.10.006
- Vannachone B, Kobayashi J, Nambanya S, Manivong K, Inthakone S, Sato Y. 1998. An epidemiological survey on intestinal parasite infection in Khammouane Province, Lao PDR, with special reference to *Strongyloides* infection. *The Southeast Asian Journal of Tropical Medicine and Public Health* **29**:717-

722. PMID: 10772552

Viravan C, Bunnag D, Harinasuta T, Upatham S, Kurathong S, Viyanant V. 1986. Clinical field trial of praziquantel in opisthorchiasis in Nong Rangya Village, Khon Kaen Province, Thailand. *The Southeast Asian journal of tropical medicine and public health* **17**:63. PMID: 3738609

Viyanant V, Brockelman WY, Lee P, Ardsungnoen S, Upatham ES. 1983. A comparison of a modified quick-Kato technique and the Stoll dilution method for field examination for *Opisthorchis viverrini* eggs. *Journal of Helminthology* **57**:191-195. doi:10.1017/S0022149X00009482

Vonghachack Y, Odermatt P, Taisayavong K, Phounsavath S, Akkhavong K, Sayasone S. 2017. Transmission of *Opisthorchis viverrini*, *Schistosoma mekongi* and soil-transmitted helminthes on the Mekong Islands, Southern Lao PDR. *Infectious Diseases of Poverty* **6**:115-131. doi:10.1186/s40249-017-0343-x

Vonghachack Y, Sayasone S, Bouakhasith D, Taisayavong K, Akkavong K, Odermatt P. 2015. Epidemiology of *Strongyloides stercoralis* on Mekong islands in southern Laos. *Acta Tropica* **141**:289-294. doi:10.1016/j.actatropica.2014.09.016

Vonghachack Y, Sayasone S, Khieu V, Bergquist R, van Dam GJ, Hoekstra PT, Corstjens P, Nickel B, Marti H, Utzinger J, Muth S, Odermatt P. 2017. Comparison of novel and standard diagnostic tools for the detection of *Schistosoma mekongi* infection in Lao People's Democratic Republic and Cambodia. *Infectious Diseases of Poverty* **6**:127. doi:10.1186/s40249-017-0335-x

Waikagul J, Krudsood S, Radomyos P, Radomyos B, Chalemrut K, Jonsuksuntigul P, Kojima S, Looareesuwan S, Thaineau W. 2002. A cross-sectional study of intestinal parasitic infections among schoolchildren in Nan Province, Northern Thailand. *The Southeast Asian journal of tropical medicine and public health* **33**:218. PMID: 12236415

Wang YC, Feng CC, Sithithaworn P. 2013. Environmental determinants of *Opisthorchis viverrini* prevalence in northeast Thailand. *Geospatial Health* **8**:111-123. doi:10.4081/gh.2013.59

Wang YC, Yuen R, Feng CC, Sithithaworn P, Kim IH. 2017. Assessing the role of landscape connectivity on *Opisthorchis viverrini* transmission dynamics. *Parasitology International* **66**:402-412. doi:10.1016/j.parint.2016.06.002

Wangboon C, Worasith C, Thanan R, Eamudomkarn C, Techasen A, Sithithaworn J, Loilome W, Chamadol N, Pinlaor S, Jumnainsong A, Yongvanit P, Khuntikeo N, Bethony JM, Sithithaworn P. 2019. Evaluation of a short term effect of praziquantel treatment in opisthorchiasis-induced hepatobiliary inflammation by urinary 8-oxodG. *Acta Tropica* **189**:124-128. doi:10.1016/j.actatropica.2018.10.003

Waree P, Polseela P, Pannarunothai S, Pipitgool V. 2001. The present situation of paragonimiasis in endemic area in Phitsanulok Province. *The Southeast Asian Journal of Tropical Medicine and Public Health* **32 Suppl 2**:51-54. PMID: 12041605

Warunee N, Choomanee L, Sataporn P, Rapeeporn Y, Nuttapong W, Sompong S, Thongdee S, Bang-On S, Rachada K. 2007. Intestinal parasitic infections among school children in Thailand. *Tropical Biomedicine* **24**:83-88. PMID: 18209713

Wattanukulpanich D, Waikagul J, Maipanich W, Nuamtanong S, Sanguankiat S, Pubampen S, Praevanit R, Mongkhonmu S, Nawa Y. 2010. *Haplorchis taichui* as a possible etiologic agent of irritable bowel syndrome-like symptoms. *The Korean journal of parasitology* **48**:225-229. doi:10.3347/kjp.2010.48.3.225

Watwiengkam N, Sithithaworn J, Duengngai K, Sripa B, Laha T, Johansen MV, Sithithaworn P. 2013. Improved performance and quantitative detection of copro-antigens by a monoclonal antibody based ELISA to diagnose human opisthorchiasis. *Acta Tropica* **128**:659-665.

doi:10.1016/j.actatropica.2013.09.012

Wijit A, Morakote N, Klinchid J. 2013. High prevalence of haplorchiasis in Nan and Lampang provinces, Thailand, proven by adult worm recovery from suspected opisthorchiasis cases. *The Korean journal of parasitology* **51**:767-769. doi:10.3347/kjp.2013.51.6.767

Wiwanitkit V, Suwansaksri J, Chaiyakhun Y. 2002. High prevalence of Fasciolopsis buski in an endemic area of liver fluke infection in Thailand. *MedGenMed: Medscape general medicine* **4**:6. PMID: 12466749

Wongba N, Thaewnongiew K, Phathee K, Laithavewat L, Duangsong R, Promthet S, Tangsawad S. 2011. Liver fluke prevention and control in the northeast of Thailand through action research. *Asian Pacific Journal of Cancer Prevention* **12**:1367-1370. PMID: 21875298

Wongsawad C, Phalee A, Noikong W, Chuboon S, Nithikathkul C. 2012. Co-infection with *Opisthorchis viverrini* and *Haplorchis taichui* detected by human fecal examination in Chomtong district, Chiang Mai Province, Thailand. *Parasitology International* **61**:56-59. doi:10.1016/j.parint.2011.10.003

Worasith C, Kamamia C, Yakovleva A, Duenngai K, Wangboon C, Sithithaworn J, Watwiengkam N, Namwat N, Techasen A, Loilome W, Yongvanit P, Loukas A, Sithithaworn P, Bethony JM. 2015. Advances in the Diagnosis of Human Opisthorchiasis: Development of *Opisthorchis viverrini* Antigen Detection in Urine. *PLOS Neglected Tropical Diseases* **9**:e4157. doi:10.1371/journal.pntd.0004157

Worasith C, Wangboon C, Duenngai K, Kiatsopit N, Kopolrat K, Techasen A, Sithithaworn J, Khuntikeo N, Loilome W, Namwat N, Yongvanit P, Carlton EJ, Sithithaworn P. 2019. Comparing the performance of urine and copro-antigen detection in evaluating *Opisthorchis viverrini* infection in communities with different transmission levels in Northeast Thailand. *PLOS Neglected Tropical Diseases* **13**:e7186. doi:10.1371/journal.pntd.0007186

Yajima A, Cong DT, Trung DD, Cam TD, Montresor A. 2009. Cost comparison of rapid questionnaire screening for individuals at risk of clonorchiasis in low- and high-prevalence communities in northern Vietnam. *Transactions of the Royal Society of Tropical Medicine and Hygiene* **103**:447-451. doi:10.1016/j.trstmh.2009.01.007

Yeoh KW, Promthet S, Sithithaworn P, Kamsa-Ard S, Parkin DM. 2015. Re-examination of *Opisthorchis viverrini* Infection in Northeast Thailand. *Asian Pacific Journal of Cancer Prevention* **16**:3413-3418. doi:10.7314/apjcp.2015.16.8.3413

Yong TS, Chai JY, Sohn WM, Eom KS, Jeoung HG, Hoang EH, Yoon CH, Jung BK, Lee SH, Sinuon M, Socheat D. 2014. Prevalence of intestinal helminths among inhabitants of Cambodia (2006-2011). *The Korean journal of parasitology* **52**:661-666. doi:10.3347/kjp.2014.52.6.661

Yong TS, Shin EH, Chai JY, Sohn WM, Eom KS, Lee DM, Park K, Jeoung HG, Hoang EH, Lee YH, Woo HJ, Lee JH, Kang SI, Cha JK, Lee KH, Yoon CH, Sinuon M, Socheat D. 2012. High prevalence of *Opisthorchis viverrini* infection in a riparian population in Takeo Province, Cambodia. *The Korean journal of parasitology* **50**:173-176. doi:10.3347/kjp.2012.50.2.173

Yoon HJ, Ki M, Eom K, Yong T, Chai J, Min D, Rim H, Sohn W, Insisiengmay B, Phommasack B. 2014. Risk factors for *Opisthorchis viverrini* and minute intestinal fluke infections in Lao PDR, 2009-2011. *The American journal of tropical medicine and hygiene* **91**:384-388. doi:10.4269/ajtmh.13-0596

Yoshida I, Horie O, Akkhavong K. 2019. Predictors of hookworm and *Opisthorchis viverrini* infection among adolescents in urban Laos: a cross-sectional study. *Research and Reports in Tropical Medicine* **10**:31-41. doi:10.2147/RRTM.S199577

Appendix 7. GATHER checklist of information that should be included in reports of global health estimates

# Checklist item		Reported on page #
Objectives and funding		
1	Define the indicator(s), populations (including age, sex, and geographic entities), and time period(s) for which estimates were made.	16-17
2	List the funding sources for the work.	20
Data inputs		
For all data inputs from multiple sources that are synthesized as part of the study:		
3	Describe how the data were identified and how the data were accessed.	16
4	Specify the inclusion and exclusion criteria. Identify all ad-hoc exclusions.	16-17; Appendix 1
5	Provide information about all included data sources and their main characteristics. For each data source used, report reference information or contact name/institution, population represented, data collection method, year(s) of data collection, sex and age range, diagnostic criteria or measurement method, and sample size, as relevant.	Table1; Figure 1-2; Appendix 6
6	Identify and describe any categories of input data that have potentially important biases (e.g., based on characteristics listed in item 5).	Table1; Figure 1; Appendix 6
For data inputs that contribute to the analysis but were not synthesized as part of the study:		
7	Describe and give sources for any other data inputs.	Appendix 6
For all data inputs:		
8	Provide all data inputs in a file format from which data can be efficiently extracted (e.g., a spreadsheet rather than a PDF), including all relevant meta-data listed in item 5. For any data inputs that cannot be shared because of ethical or legal reasons, such as third-party ownership, provide a contact name or the name of the institution that retains the right to the data.	Appendix 6
Data analysis		
9	Provide a conceptual overview of the data analysis method. A diagram may be helpful.	18-20; Appendix 3
10	Provide a detailed description of all steps of the analysis, including mathematical formulae. This description should cover, as relevant, data cleaning, data pre-processing, data adjustments and weighting of data sources, and mathematical or statistical model(s).	18-20; Appendix 2; Appendix 3
11	Describe how candidate models were evaluated and how the final model(s) were selected.	19; Appendix 3

12	Provide the results of an evaluation of model performance, if done, as well as the results of any relevant sensitivity analysis.	Appendix 3; Appendix 5
13	Describe methods of calculating uncertainty of the estimates. State which sources of uncertainty were, and were not, accounted for in the uncertainty analysis.	19-20; Appendix 3
14	State how analytic or statistical source code used to generate estimates can be accessed.	18-20
Results and discussion		
15	Provide published estimates in a file format from which data can be efficiently extracted.	Table 2-3; Figure 3-6; Appendix 4
16	Report a quantitative measure of the uncertainty of the estimates (e.g., uncertainty intervals).	Figure 4
17	Interpret results in light of existing evidence. If updating a previous set of estimates, describe the reasons for changes in estimates.	12-15
18	Discuss limitations of the estimates. Include a discussion of any modelling assumptions or data limitations that affect interpretation of the estimates.	15-16

From: Stevens GA, Alkema L, Black RE, Boerma JT, Collins GS, Ezzati M, Grove JT, Hogan DR, Hogan MC, Horton R, Lawn JE, Marušić A, Mathers CD, Murray CJL, Rudan I, Salomon JA, Simpson PJ, Vos T, Welch V. 2016. Guidelines for Accurate and Transparent Health Estimates Reporting: the GATHER statement. *PLOS Medicine* 13:e1002116. doi:10.1371/journal.pmed.1002056



PRISMA 2009 Checklist

Appendix 8. PRISMA 2009 Checklist

Section/topic	#	Checklist item	Reported on page #
TITLE			
Title	1	Identify the report as a systematic review, meta-analysis, or both.	1
ABSTRACT			
Structured summary	2	Provide a structured summary including, as applicable: background; objectives; data sources; study eligibility criteria, participants, and interventions; study appraisal and synthesis methods; results; limitations; conclusions and implications of key findings; systematic review registration number.	2
INTRODUCTION			
Rationale	3	Describe the rationale for the review in the context of what is already known.	2-4
Objectives	4	Provide an explicit statement of questions being addressed with reference to participants, interventions, comparisons, outcomes, and study design (PICOS).	2-4
METHODS			
Protocol and registration	5	Indicate if a review protocol exists, if and where it can be accessed (e.g., Web address), and, if available, provide registration information including registration number.	16; Appendix 1
Eligibility criteria	6	Specify study characteristics (e.g., PICOS, length of follow-up) and report characteristics (e.g., years considered, language, publication status) used as criteria for eligibility, giving rationale.	16; Appendix 1
Information sources	7	Describe all information sources (e.g., databases with dates of coverage, contact with study authors to identify additional studies) in the search and date last searched.	16; Appendix 1
Search	8	Present full electronic search strategy for at least one database, including any limits used, such that it could be repeated.	16; Appendix 1
Study selection	9	State the process for selecting studies (i.e., screening, eligibility, included in systematic review, and, if applicable, included in the meta-analysis).	16-17; Appendix 1
Data collection process	10	Describe method of data extraction from reports (e.g., piloted forms, independently, in duplicate) and any processes for obtaining and confirming data from investigators.	17; Appendix 1
Data items	11	List and define all variables for which data were sought (e.g., PICOS, funding sources) and any assumptions and simplifications made.	17; Appendix 2
Risk of bias in individual studies	12	Describe methods used for assessing risk of bias of individual studies (including specification of whether this was done at the study or outcome level), and how this information is to be used in any data synthesis.	Appendix 6
Summary measures	13	State the principal summary measures (e.g., risk ratio, difference in means).	19-20
Synthesis of results	14	Describe the methods of handling data and combining results of studies, if done, including measures of consistency (e.g., I^2) for each meta-analysis.	18-20; Appendix 3



PRISMA 2009 Checklist

Section/topic	#	Checklist item	Reported on page #
Risk of bias across studies	15	Specify any assessment of risk of bias that may affect the cumulative evidence (e.g., publication bias, selective reporting within studies).	Appendix 6
Additional analyses	16	Describe methods of additional analyses (e.g., sensitivity or subgroup analyses, meta-regression), if done, indicating which were pre-specified.	19-20; Appendix 3
RESULTS			
Study selection	17	Give numbers of studies screened, assessed for eligibility, and included in the review, with reasons for exclusions at each stage, ideally with a flow diagram.	Figure 1
Study characteristics	18	For each study, present characteristics for which data were extracted (e.g., study size, PICOS, follow-up period) and provide the citations.	Table1; Figure 1-2; Appendix 6
Risk of bias within studies	19	Present data on risk of bias of each study and, if available, any outcome level assessment (see item 12).	Appendix 6
Results of individual studies	20	For all outcomes considered (benefits or harms), present, for each study: (a) simple summary data for each intervention group (b) effect estimates and confidence intervals, ideally with a forest plot.	N/A
Synthesis of results	21	Present results of each meta-analysis done, including confidence intervals and measures of consistency.	Table 2-3; Figure 3-6; Appendix 4
Risk of bias across studies	22	Present results of any assessment of risk of bias across studies (see Item 15).	Appendix 6
Additional analysis	23	Give results of additional analyses, if done (e.g., sensitivity or subgroup analyses, meta-regression [see Item 16]).	Appendix 3; Appendix 5;
DISCUSSION			
Summary of evidence	24	Summarize the main findings including the strength of evidence for each main outcome; consider their relevance to key groups (e.g., healthcare providers, users, and policy makers).	4,6-9,11
Limitations	25	Discuss limitations at study and outcome level (e.g., risk of bias), and at review-level (e.g., incomplete retrieval of identified research, reporting bias).	15-16
Conclusions	26	Provide a general interpretation of the results in the context of other evidence, and implications for future research.	12-16
FUNDING			
Funding	27	Describe sources of funding for the systematic review and other support (e.g., supply of data); role of funders for the systematic review.	20

From: Moher D, Liberati A, Tetzlaff J, Altman DG, The PRISMA Group (2009). Preferred Reporting Items for Systematic Reviews and Meta-Analyses: The PRISMA Statement. PLoS Med 6(7): e1000097. doi:10.1371/journal.pmed1000097

For more information, visit: www.prisma-statement.org.