

The gender gap in adolescent mental health: a cross-national investigation of 566,827 adolescents across 73 countries

Olympia Campbell, David Bann, Praveetha Patalay

Table of Contents

| | |
|--|-----------|
| <i>Table S1: Regional groupings</i> | 2 |
| <i>Table S2: Comparison of the different gender equality measures and the indicators that make up each dimension.</i> | 3 |
| <i>Table S3: Correlation matrix showing the country-level correlations between the country-level variables.</i> | 4 |
| <i>Table S4: Regression coefficients with standard errors (SE) and variance components of multi-level models for life satisfaction</i> | 5 |
| <i>Table S5: Regression coefficients with standard errors (SE) and variance components of multi-level models for psychological distress</i> | 6 |
| <i>Table S6: Regression coefficients with standard errors (SE) and variance components of multi-level models for Hedonia</i> | 7 |
| <i>Table S7: Regression coefficients with standard errors (SE) and variance components of multi-level models for Eudaemonia.....</i> | 8 |
| <i>Figure S1: Forest plots of meta-analyses for each mental health outcome by regional sub-group.....</i> | 9 |
| <i>Fig. S2: Distributions of life satisfaction by gender and country.....</i> | 10 |
| <i>Figure S3: Distributions of hedonia by gender and country</i> | 11 |
| <i>Figure S4: Distributions of Eudaemonia by gender and country</i> | 12 |
| <i>Figure S5: Associations of country-level economic and gender equality indicators with average hedonia and eudaemonia by gender</i> | 13 |
| <i>Figure S6: Associations of country-level economic and gender equality indicators with average life satisfaction and psychological distress by gender and with regional regression lines.</i> | 14 |

Table S1: Regional groupings

| EUR A | EUR B | EUR C | Eastern Mediterranean | South East Asia/ Western Pacific | Americas |
|----------------|------------------------|--------------------|------------------------------|---|--------------------|
| Austria | Albania | Belarus | Jordan | Australia | Argentina |
| Belgium | Baku (Azerbaijan) | Estonia | Lebanon | Brunei Darussalam | Brazil |
| Croatia | Bosnia and Herzegovina | Hungary | Morocco | Chinese Taipei | Canada |
| Czech Republic | Bulgaria | Kazakhstan | Qatar | Hong Kong | Chile |
| Denmark | Georgia | Latvia | Saudi Arabia | Indonesia | Colombia |
| Finland | Kosovo | Lithuania | United Arab Emirates | Japan | Costa Rica |
| France | Montenegro | Moldova | | Korea (Republic of) | Dominican Republic |
| Germany | Poland | Russian Federation | | Macao | Mexico |
| Greece | Romania | Ukraine | | Malaysia | Panama |
| Iceland | Serbia | | | Philippines | Peru |
| Ireland | Slovak Republic | | | Vietnam | United States |
| Italy | Turkey | | | Thailand | Uruguay |
| Luxembourg | North Macedonia | | | | |
| Malta | | | | | |
| Netherlands | | | | | |
| Portugal | | | | | |
| Slovenia | | | | | |
| Spain | | | | | |
| Sweden | | | | | |
| Switzerland | | | | | |
| United Kingdom | | | | | |

Regional groupings based on World Health Organisation categories. South East Asia and Western Pacific groups were combined, and Kosovo, Serbia and Montenegro were all classified as Europe B as the WHO does not include them in their classifications

Table S2: Comparison of the different gender equality measures and the indicators that make up each dimension.

| <i>Index</i> | <i>Dimension</i> | | | |
|----------------------------------|---|---|---|--|
| | Political | Educational | Economic | Health |
| Gender Inequality Index | 1. Female and male shares of parliamentary seats | 1. Female and male population with at least secondary education | 1. Female and male labour force participation rates | 1. Maternal mortality ratio 2. Adolescent birth rate |
| Global Gender Gap Index | 1. Ratio of female to male seats in parliament 2. Ratio of females to males at ministerial level 3. Ratio of number of years with a female head of state (last 50 years) to years with male head of state | 1. Ratio of female literacy rate to male 2. Ratio of female net primary enrolment rate to male 3. Ratio of female net secondary enrolment rate to male 4. Ratio of female gross tertiary enrolment ratio to male | 1. Ratio of female labour force participation to male 2. Wage equality between women and men for similar work 3. Ratio of female estimated earned income to male 4. Ratio of female legislators, senior officials and managers over male value 5. Ratio of female professional and technical workers to males | 1. Sex ratio at birth 2. Ratio of female healthy life expectancy to males |
| Gender Social Norms Index | 1. “men make better political leaders than women do” 2. “women have the same rights as men” | 1. “University is more important for a man than for a woman” | 1. “men should have more right to a job than women” 2. “men make better business executives than women do” | 1. Proxy for intimate partner violence 2. Proxy for reproductive rights |

The GGGI measures gaps in gender equality rather than levels. For example, countries will score higher or lower on the GGGI depending on the difference in higher education enrolment between men and women but not for the overall level of higher education in the country. This separates the GGGI from a country’s level of development to a greater extent than the GII.

Table S3: Correlation matrix showing the country-level correlations between the country-level variables.

| | GII | GGGI | GSNI | GDP per cap | Gini |
|--------------------|------------|-------------|-------------|--------------------|-------------|
| GII | 1.000 | -0.56 | 0.82 | -0.79 | 0.60 |
| GGGI | | 1.000 | -0.65 | 0.48 | -0.20 |
| GSNI | | | 1.000 | -0.85 | 0.47 |
| GDP per cap | | | | 1.000 | -0.41 |
| Gini | | | | | 1.000 |

Abbreviations: GII = Gender Inequality Index; GGGI = Global Gender Gap Index; GSNI = Gender Social Norms Index; GDP per cap = Gross Domestic Product per capita. The GII and GSNI are more highly correlated with the economic indicators GDP per capita and Gini than the GGGI is.

Table S4: Regression coefficients with standard errors (SE) and variance components of multi-level models for life satisfaction

| | Model A: Baseline Model | Model B: + Sex | Model C: + country-level indicators | Model D: + cross-level interactions |
|---|------------------------------------|---------------------------|--|--|
| | Coef (SE) | Coef (SE) | Coef (SE) | Coef (SE) |
| Intercept | -0.00046 (0.029) | 0.079 (0.028) ** | -1.06 (0.40)* | -1.1 (0.39)** |
| Sex female | | -0.16 (0.015) *** | -0.17 (0.017)*** | 0.37 (0.23) |
| GGGI x 10 | | | 0.17 (0.052)** | 0.18 (0.051)*** |
| GDP per capita x 10 ⁻⁴ | | | -0.035 (0.012) ** | -0.033 (0.011)** |
| Gini | | | -0.00021 (0.0036) | -0.0003 (0.003) |
| GGGI x 10 X sex female | | | | -0.076 (0.03)* |
| GDP per cap x 10 ⁻⁴ X sex female | | | | -0.017 (0.0068)* |
| Gini X sex female | | | | 0.0014 (0.0021) |
| Variance Components | | | | |
| Individual | 0.95 (0.97) | 0.94 (0.97) | 0.93 (0.96) | 0.93 (0.96) |
| National: Country | 0.056 (0.24) | 0.055 (0.24) | 0.035 (0.19) | 0.035 (0.19) |
| Sex Female | | 0.016 (0.12) | 0.017 (0.13) | 0.012 (0.11) |
| VPC | 5.6% | 5.4% | 3.6% | 3.6% |

Model A baseline model to illustrate the between country variance. Model B includes sex female. Model C includes all country-level variables. Model D includes all cross-level interactions with sex female. Since the GGGI scale runs from 0-1 we multiply it by 10 so that the coefficient for GGGI represents a 0.1-point increase in the scale. GDP per capita is rescaled by dividing by 10,000, so that the coefficient represents the association with an increase of 1 x 10⁴ GDP per capita. Variance partition coefficient (VPC) indicates the proportion of unexplained variance attributable to differences between countries. *p<0.05 **p<0.01 ***p<0.001

Table S5: Regression coefficients with standard errors (SE) and variance components of multi-level models for psychological distress

| | Model A: Baseline Model | Model B: + Sex | Model C: + country-level indicators | Model D: + cross-level interactions |
|---|------------------------------------|---------------------------|--|--|
| | Coef (SE) | Coef (SE) | Coef (SE) | Coef (SE) |
| Intercept | -0.015 (0.029) | -0.24 (0.03)*** | -0.42 (0.44) | 0.064 (0.46) |
| Sex female | | 0.45 (0.017) *** | 0.46 (0.018)*** | -0.39 (0.23) |
| GGGI x 10 | | | -0.0065 (0.057) | -0.071 (0.059) |
| GDP per capita x 10 ⁻⁴ | | | 0.026 (0.013) * | 0.014 (0.013) |
| Gini | | | 0.004 (0.004) | 0.0043 (0.0042) |
| GGGI x 10 X sex female | | | | 0.11 (0.03) *** |
| GDP per cap x 10 ⁻⁴ X sex female | | | | 0.021 (0.0067) ** |
| Gini X sex female | | | | -0.00053 (0.0021) |
| Variance Components | | | | |
| Individual | 0.94 (0.97) | 0.89 (0.94) | 0.87 (0.93) | 0.87 (0.93) |
| National: Country | 0.060 (0.25) | 0.065 (0.25) | 0.051 (0.23) | 0.048 (0.22) |
| Sex Female | | 0.019 (0.14) | 0.020 (0.14) | 0.012 (0.11) |
| VPC | 6.01% | 6.6% | 5.4% | 5.2% |

Model A baseline model to illustrate the between country variance. Model B includes sex female. Model C includes all country-level variables. Model D includes all cross-level interactions with sex female. Since the GGGI scale runs from 0-1 we multiply it by 10 so that the coefficient for GGGI represents a 0.1-point increase in the scale. GDP per capita is rescaled by dividing by 10,000, so that the coefficient represents the association with an increase of 1 x 10⁴ GDP per capita. Variance partition coefficient (VPC) indicates the proportion of unexplained variance attributable to differences between countries. *p<0.05 **p<0.01 ***p<0.001

Table S6: Regression coefficients with standard errors (SE) and variance components of multi-level models for Hedonia

| | Model A: Baseline Model | Model B: + Sex | Model C: + country-level indicators | Model D: + cross-level interactions |
|---|------------------------------------|---------------------------|--|--|
| | Coef (SE) | Coef (SE) | Coef (SE) | Coef (SE) |
| Intercept | -0.012 (0.028) | 0.006 (0.03) | -1.5 (0.45) ** | -1.7 (0.45)*** |
| Sex female | | -0.035 (0.016) * | -0.048 (0.017)** | 1.008 (0.24)*** |
| GGGI x 10 | | | 0.17 (0.058) ** | 0.20 (0.059)** |
| GDP per capita x 10 ⁻⁴ | | | -0.027 (0.013) * | -0.027 (0.013)* |
| Gini | | | 0.0095 (0.0041)* | 0.0097 (0.0041)* |
| GGGI x 10 X sex female | | | | -0.14 (0.031)*** |
| GDP per cap x 10 ⁻⁴ X sex female | | | | 0.0027 (0.007) |
| Gini X sex female | | | | -0.00104 (0.0022) |
| Variance Components | | | | |
| Individual | 0.94 (0.97) | 0.94 (0.97) | 0.92 (0.96) | 0.92 (0.96) |
| National: Country | 0.056 (0.24) | 0.062 (0.25) | 0.045 (0.22) | 0.046 (0.22) |
| Sex Female | | 0.018 (0.14) | 0.018 (0.13) | 0.013 (0.11) |
| VPC | 5.6% | 6.05% | 4.7% | 4.7% |

Model A baseline model to illustrate the between country variance. Model B includes sex female. Model C includes all country-level variables. Model D includes all cross-level interactions with sex female. Since the GGI scale runs from 0-1 we multiply it by 10 so that the coefficient for GGI represents a 0.1-point increase in the scale. GDP per capita is rescaled by dividing by 10,000, so that the coefficient represents the association with an increase of 1 x 10⁴ GDP per capita. Variance partition coefficient (VPC) indicates the proportion of unexplained variance attributable to differences between countries. *p<0.05 **p<0.01 ***p<0.001

Table S7: Regression coefficients with standard errors (SE) and variance components of multi-level models for Eudaemonia

| | Model A: Baseline Model | Model B: + Sex | Model C: + country-level indicators | Model D: + cross-level interactions |
|---|------------------------------------|---------------------------|--|--|
| | Coef (SE) | Coef (SE) | Coef (SE) | Coef (SE) |
| Intercept | -0.0024 (0.028) | 0.032 (0.024) | -0.34 (0.36) | -0.31 (0.36) |
| Sex female | | -0.069 (0.014) *** | -0.074 (0.016)*** | 0.039 (0.21) |
| GGGI x 10 | | | 0.048 (0.046) | 0.035 (0.047) |
| GDP per capita x 10 ⁻⁴ | | | -0.037 (0.01) *** | -0.04 (0.01)*** |
| Gini | | | 0.0037 (0.0032) | 0.0058 (0.0033) |
| GGGI x 10 X sex female | | | | -0.05 (0.027) |
| GDP per cap x 10 ⁻⁴ X sex female | | | | -0.0090 (0.006) |
| Gini X sex female | | | | 0.0076 (0.0019)*** |
| Variance Components | | | | |
| Individual | 0.94 (0.97) | 0.94 (0.97) | 0.94 (0.97) | 0.94 (0.97) |
| National: Country | 0.056 (0.24) | 0.043 (0.21) | 0.030 (0.17) | 0.029 (0.17) |
| Sex Female | | 0.014 (0.12) | 0.015 (0.12) | 0.01 (0.1) |
| VPC | 5.6% | 4.3% | 3.02% | 3% |

Model A baseline model to illustrate the between country variance. Model B includes sex female. Model C includes all country-level variables. Model D includes all cross-level interactions with sex female. Since the GGGI scale runs from 0-1 we multiply it by 10 so that the coefficient for GGGI represents a 0.1-point increase in the scale. GDP per capita is rescaled by dividing by 10,000, so that the coefficient represents the association with an increase of 1 x 10⁴ GDP per capita. Variance partition coefficient (VPC) indicates the proportion of unexplained variance attributable to differences between countries. *p<0.05 **p<0.01 ***p<0.001

Figure S1: Forest plots of meta-analyses for each mental health outcome by regional sub-group

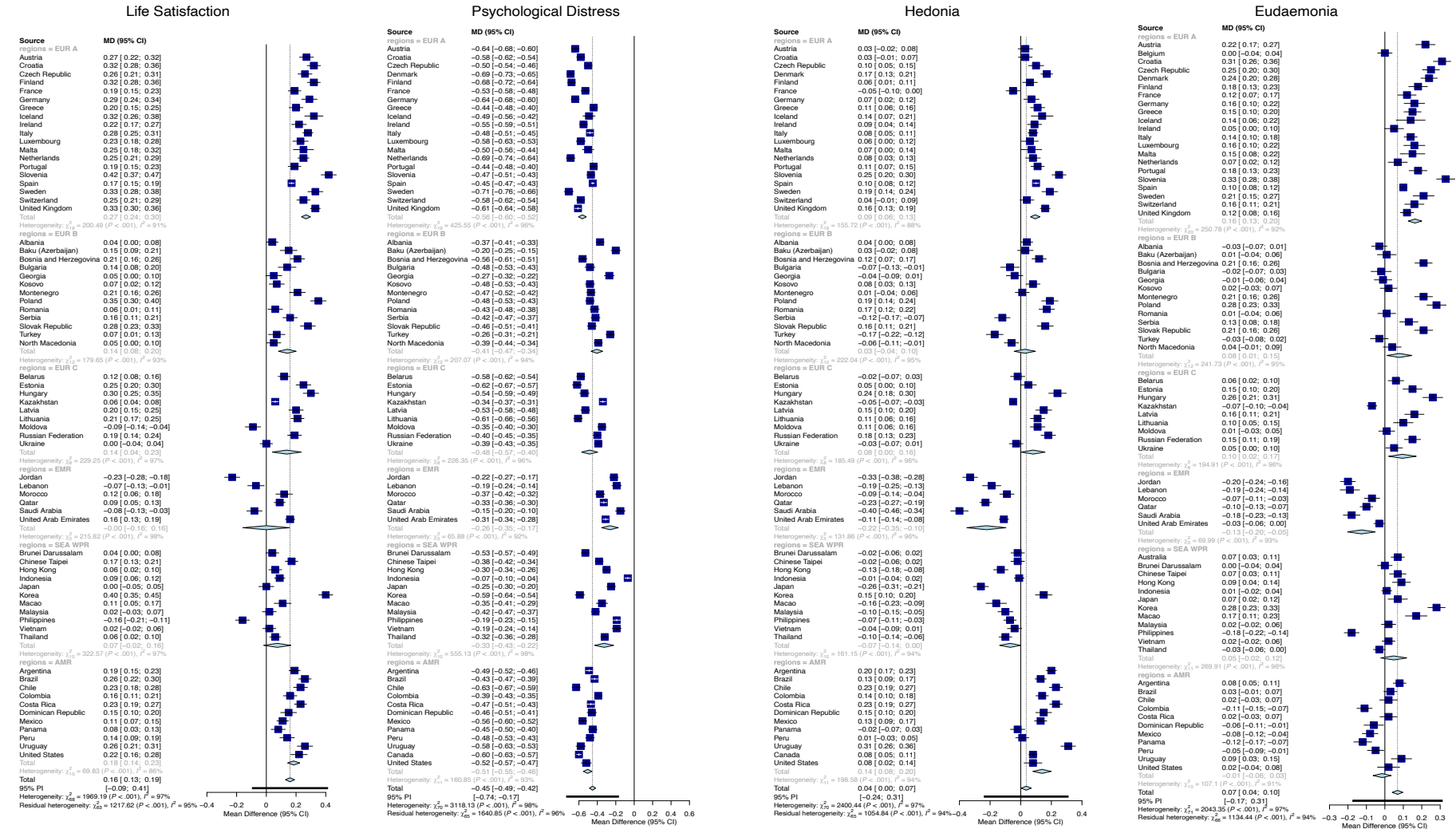


Fig. S2: Distributions of life satisfaction by gender and country

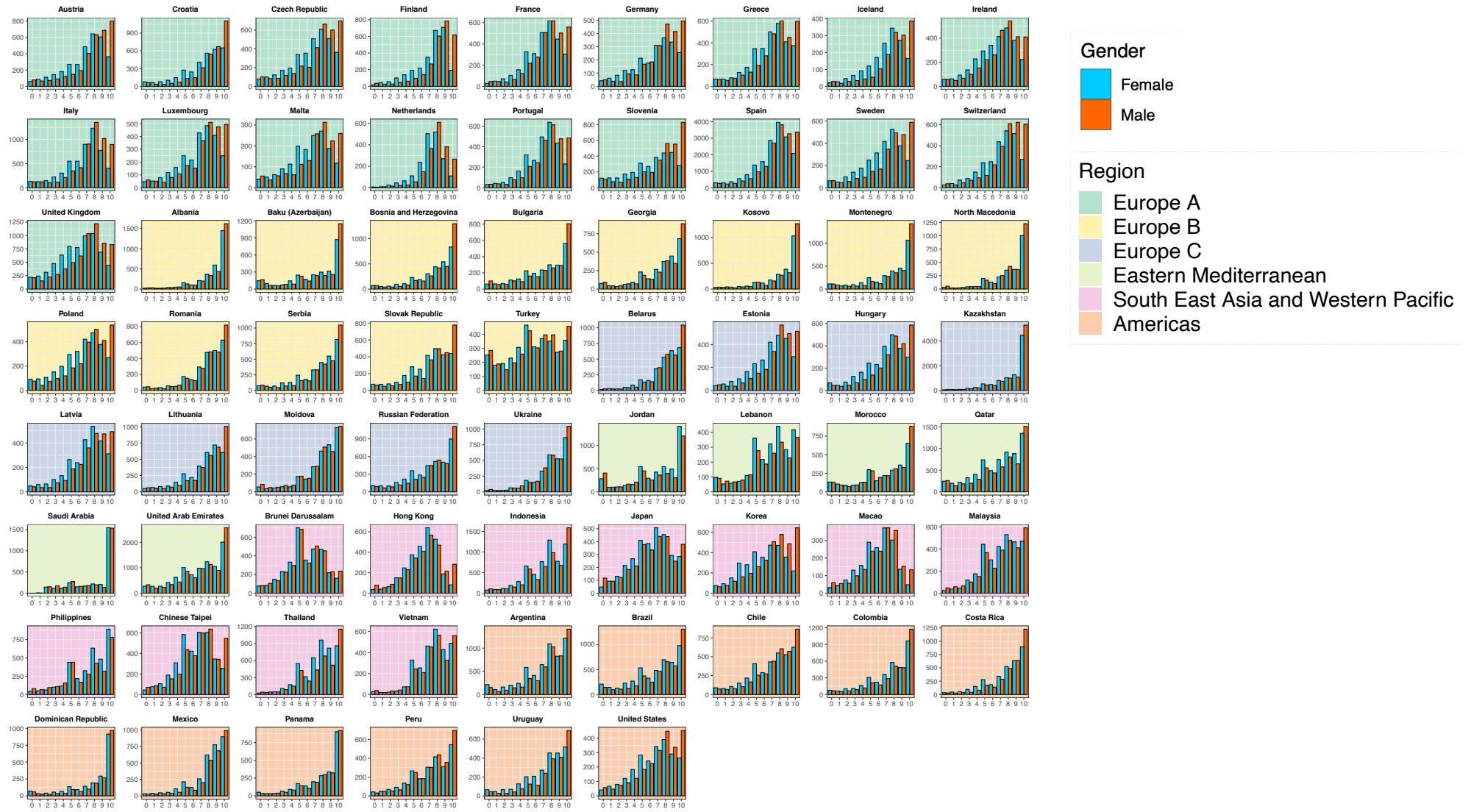


Figure S3: Distributions of hedonia by gender and country

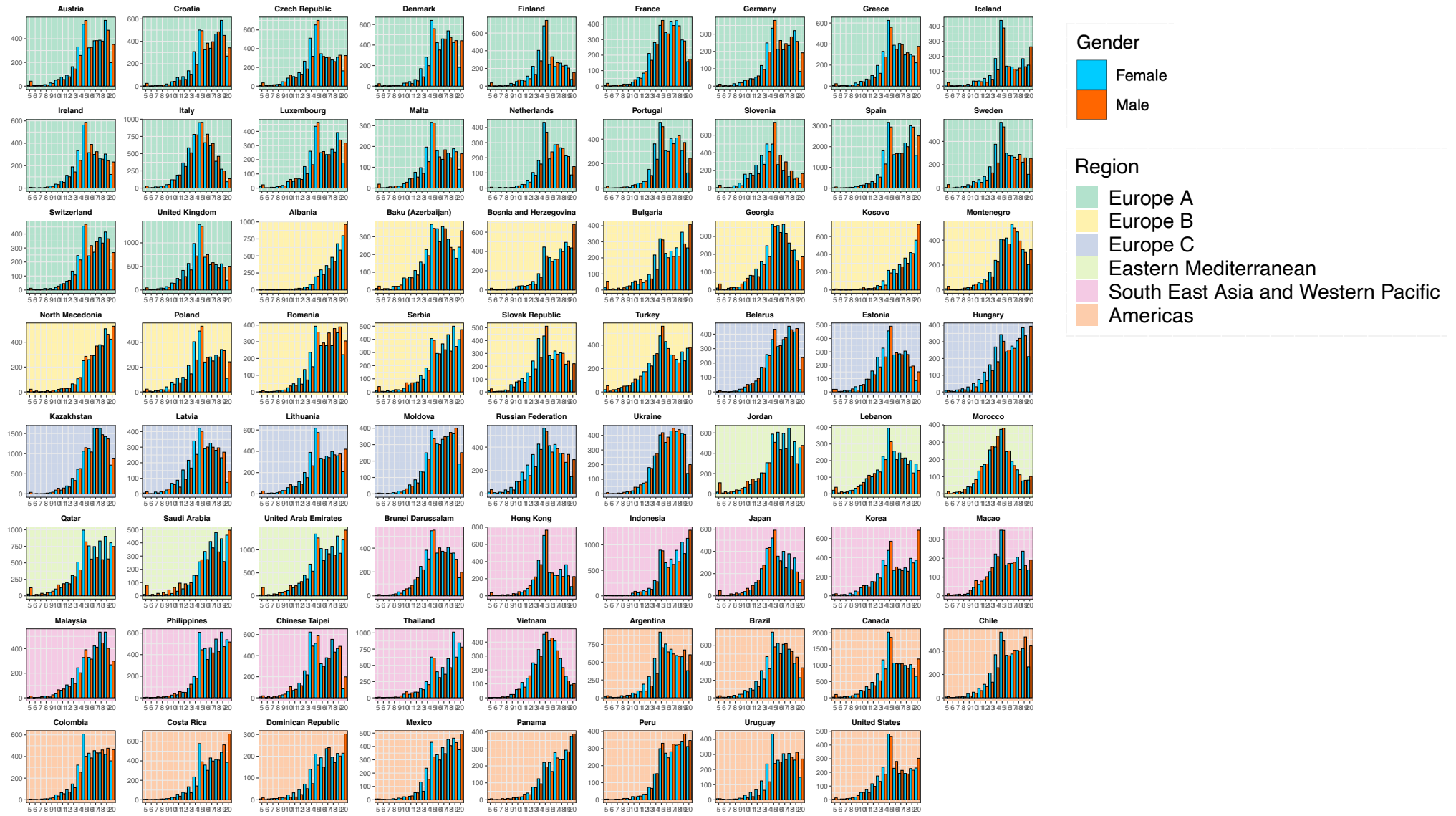
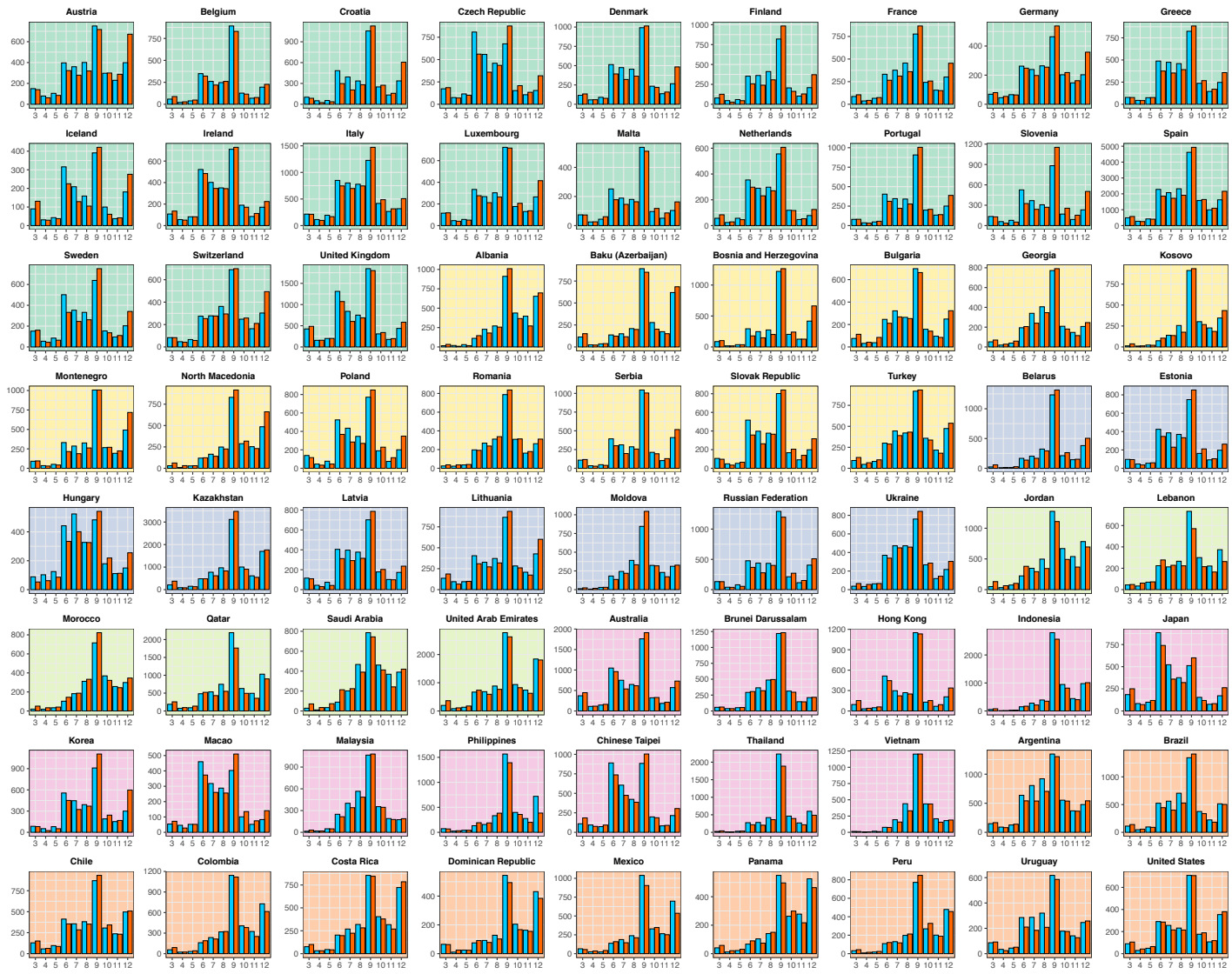


Figure S4: Distributions of Eudaemonia by gender and country



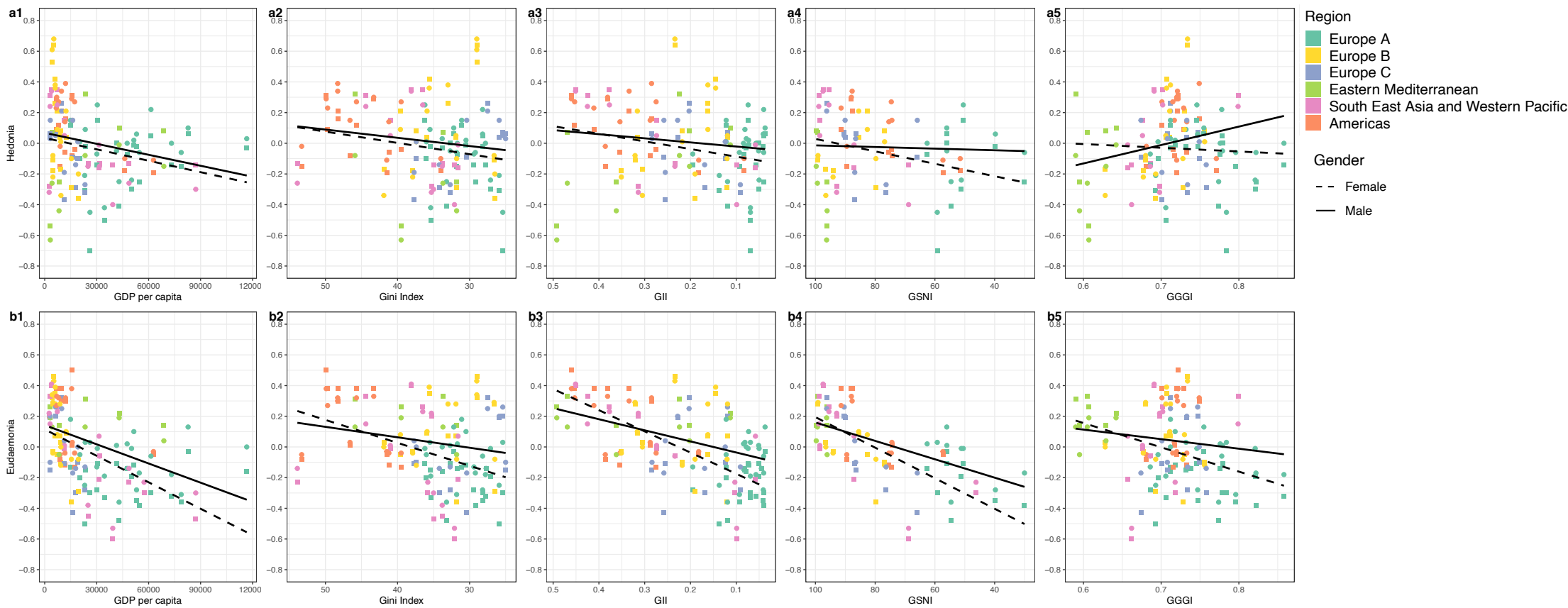
Gender

- Female
- Male

Region

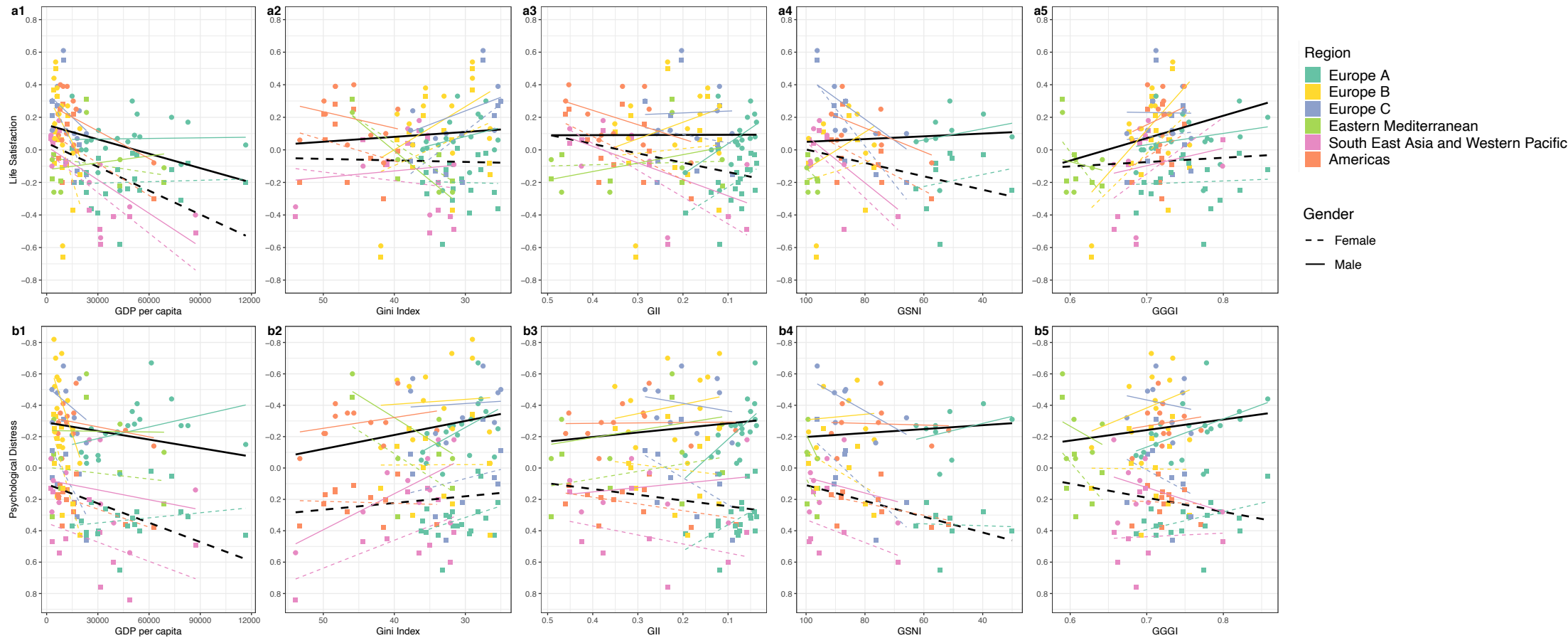
- Europe A
- Europe B
- Europe C
- Eastern Mediterranean
- South East Asia and Western Pacific
- Americas

Figure S5: Associations of country-level economic and gender equality indicators with average hedonia and eudaemonia by gender



Country-level associations of economic indicators (GDP per capita and Gini) and gender equality indicators (GII, GSNI, and GGGI) with average standardised hedonia (a1-5) eudaemonia (b1-5) for females and males and coloured by region. The GII, GSNI and Gini scales are reversed so that they run from less equal to more equal permitting consistent interpretation with GGGI. A negative relationship indicates worse mental health across all outcomes. A larger distance between the regression lines indicates a larger gender gap. Abbreviations: Gini = income inequality, GII = gender inequality index, GSNI = gender social norms index, GGGI = global gender gap index.

Figure S6: Associations of country-level economic and gender equality indicators with average life satisfaction and psychological distress by gender and with regional regression lines.



Country-level associations of economic indicators (GDP per capita and Gini) and gender equality indicators (GII, GSNI, and GGGI) with average standardised life satisfaction (a1-5) psychological distress (b1-5) for females and males and coloured by region. The GII, GSNI and Gini scales are reversed so that they run from less equal to more equal permitting consistent interpretation with GGGI. A negative relationship indicates worse mental health across all outcomes. A larger distance between the regression lines indicates a larger gender gap. Abbreviations: Gini = income inequality, GII = gender inequality index, GSNI = gender social norms index, GGGI = global gender gap index.