

The Impact of Management on Hospital Performance - supplementary appendix

Asaria, Miqdad ^{*1,2}, Gershlick, Benjamin², McGuire, Alistair¹ and Street, Andrew¹

¹Department of Health Policy, London School of Economics and Political Science

²Health Foundation, London

June 1, 2020

1 Data

Table 1: Data Sources

Data	Source	URL
Inpatient admissions	NHS Digital	https://digital.nhs.uk/data-and-information/publications/statistical/hospital-admitted-patient-care-activity/2018-19
Accident and emergency target	NHS Digital	https://digital.nhs.uk/data-and-information/publications/statistical/hospital-accident-emergency-activity/2018-19
Inpatient admissions referral to treatment target	NHS England	https://www.england.nhs.uk/statistics/statistical-work-areas/rtt-waiting-times/rtt-data-2018-19/
NHS staff survey management scores	NHS survey coordination centre	https://www.nhsstaffsurveys.com/Page/1064/Latest-Results/2018-Results/
NHS workforce statistics (ESR)	NHS Digital	https://digital.nhs.uk/data-and-information/publications/statistical/nhs-workforce-statistics/september-2018
Summary Hospital-level Mortality Indicator (SHMI)	NHS Digital	https://digital.nhs.uk/data-and-information/publications/clinical-indicators/shmi/
Care quality commission rating	Care quality commission	https://www.cqc.org.uk/about-us/transparency/using-cqc-data
Financial performance of NHS trusts	NHS Improvement	https://improvement.nhs.uk/resources/nhs-providers-trust-accounts-consolidation-tac-data-201718/
Bed Availability and Occupancy Data ð Overnight	NHS England	https://www.england.nhs.uk/statistics/statistical-work-areas/bed-availability-and-occupancy/bed-data-overnight/

Table 2: Staff Survey Management Questions

7) My immediate manager:	8) Senior managers:
a. encourages those who work for her/him to work as a team	a. I know who the senior managers are here
b. can be counted on to help me with a difficult task at work	b. Communication between senior management and staff is effective
c. gives me clear feedback on my work	c. Senior managers here try to involve staff in important decisions
d. asks for my opinion before making decisions that affect my work	d. Senior managers act on staff feedback
e. is supportive in a personal crisis	
f. takes a positive interest in my health and well-being	
g. values my work	

* Contact Author. Email: m.asaria@lse.ac.uk

Figure 1: How we narrowed down to 97 acute NHS hospital trusts

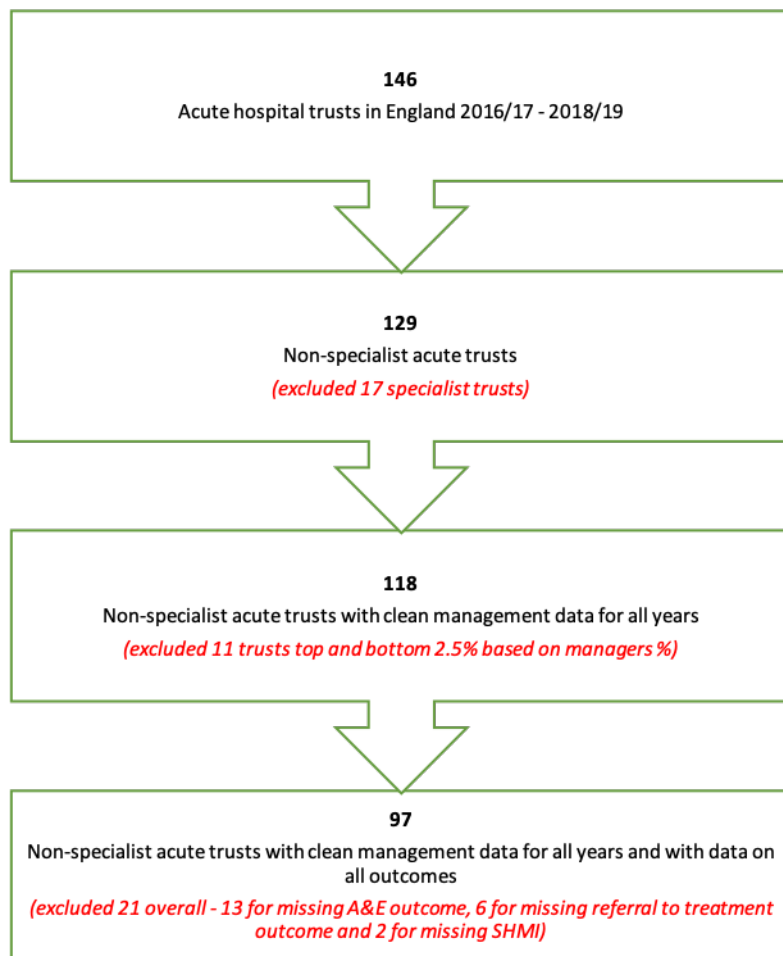


Table 3: List of 97 Acute NHS Trusts included in analysis presented in paper with data for 2018/19

Trust Name	Organisation Code	Managers (% of all staff)	Managers (FTE)	Spend on Management (£ millions)	Staff Survey Management Score
Aintree University Hospital	REM	3.27	148.3	8.89	63.7
Airedale	RCF	3.39	85.0	5.06	67.1
Ashford and St. Peter's Hospitals	RTK	2.44	79.5	5.39	64.2
Barking, Havering and Redbridge University Hospitals	RF4	2.57	149.2	11.51	63.3
Barnsley Hospital	RFF	2.52	74.4	4.09	65.6
Basildon and Thurrock University Hospitals	RDD	3.16	133.3	8.68	64.0
Bedford Hospital	RC1	2.34	58.5	3.75	64.0
Blackpool Teaching Hospitals	RXL	4.64	288.4	15.05	64.5
Bolton	RMC	1.73	88.5	5.74	68.4
Bradford Teaching Hospitals	RAE	2.19	112.8	7.39	65.3
Brighton and Sussex University Hospitals	RXH	2.63	192.7	11.47	64.4
Buckinghamshire Healthcare	RXQ	3.88	197.7	11.39	66.2
Calderdale and Huddersfield	RWY	2.42	125.1	6.69	63.0
Cambridge University Hospitals	RGT	2.84	262.8	16.36	66.6
Chelsea and Westminster Hospital	RQM	4.83	261.7	16.06	65.7
Chesterfield Royal Hospital	RFS	1.91	67.1	3.81	65.7
Colchester Hospital University	RDE	2.84	230.8	14.27	60.5
Countess of Chester Hospital	RJR	3.11	107.1	5.89	63.9
County Durham and Darlington	RXP	3.03	186.6	10.52	62.8
Croydon Health Services	RJ6	4.31	139.1	8.15	62.2
Derby Teaching Hospitals	RTG	2.81	289.3	16.63	64.2
Doncaster and Bassetlaw Teaching Hospitals	RP5	3.26	173.7	9.42	61.7
Dorset County Hospital	RBD	3.99	90.1	5.28	66.1
East Cheshire	RJN	3.64	80.9	4.67	67.5
East Kent Hospitals University	RVV	1.73	132.8	8.44	60.5
East Lancashire Hospitals	RXR	3.24	238.6	13.36	67.7
East Sussex Healthcare	RXC	2.64	159.3	9.62	64.8
Frimley Health	RDU	2.21	177.0	11.30	68.3
George Eliot Hospital	RLT	2.67	53.4	3.45	62.1
Great Western Hospitals	RN3	2.32	90.7	5.82	63.9

Table 3 continued from previous page

Trust Name	Organisation Code	Managers (% of all staff)	Managers (FTE)	Spend on Management (£ millions)	Staff Survey Management Score
Harrogate and District	RCD	2.58	94.5	5.48	67.0
Hillingdon Hospitals	RAS	4.33	126.2	7.83	62.9
Homerton University Hospital	RQX	3.12	105.3	6.64	67.9
Hull and East Yorkshire Hospitals	RWA	3.60	259.4	14.42	65.4
Imperial College Healthcare	RYJ	4.56	465.5	27.69	62.6
James Paget University Hospitals	RGP	3.45	91.6	5.46	63.4
Kettering General Hospital	RNQ	3.64	125.6	7.10	65.0
King's College Hospital	RJZ	2.63	298.3	19.70	61.7
Kingston Hospital	RAX	3.37	96.8	6.77	66.9
Lancashire Teaching Hospitals	RXN	2.19	151.8	9.36	63.2
Leeds Teaching Hospitals	RR8	1.57	237.3	15.77	68.2
Lewisham and Greenwich	RJ2	3.56	197.8	12.36	65.7
London North West Healthcare	R1K	4.44	337.2	20.51	62.5
Luton and Dunstable University Hospital	RC9	4.25	158.1	9.33	67.3
Maidstone and Tunbridge Wells	RWF	3.40	167.2	9.78	62.8
Medway	RPA	2.43	89.0	5.80	56.5
Mid Cheshire Hospitals	RBT	2.77	102.8	5.98	65.4
Milton Keynes University Hospital	RD8	4.51	133.5	7.99	64.2
Norfolk and Norwich University Hospitals	RM1	1.97	133.7	8.46	61.6
North Cumbria University Hospitals	RNL	3.04	106.9	6.24	56.8
North Tees and Hartlepool	RVW	3.10	140.2	8.11	66.4
North West Anglia	RGN	4.01	214.1	11.69	63.3
Northampton General Hospital	RNS	3.83	164.0	8.67	63.5
Northumbria Healthcare	RTF	4.54	310.1	17.66	68.0
Nottingham University Hospitals	RX1	3.63	472.8	26.36	65.2
Oxford University Hospitals	RTH	2.97	314.0	18.56	63.8
Pennine Acute Hospitals	RW6	3.37	295.7	17.12	62.3
Plymouth Hospitals	RK9	2.28	141.8	8.99	66.4
Poole Hospital	RD3	2.92	98.2	5.66	65.4
Queen Elizabeth Hospital King's Lynn	RCX	3.96	110.0	6.29	58.7
Rotherham	RFR	3.13	115.1	6.88	62.2

Table 3 continued from previous page

Trust Name	Organisation Code	Managers (% of all staff)	Managers (FTE)	Spend on Management (£ millions)	Staff Survey Management Score
Royal Berkshire	RHW	2.94	136.9	7.93	66.5
Royal Bournemouth and Christchurch Hospitals	RDZ	2.98	118.4	7.23	69.7
Royal Devon and Exeter	RH8	2.42	167.1	9.61	66.4
Royal Liverpool and Broadgreen University Hospitals	RQ6	5.00	314.7	17.30	65.4
Royal Surrey County Hospital	RA2	4.15	149.2	9.20	66.5
Royal United Hospitals Bath	RD1	4.00	177.1	10.00	64.0
Royal Wolverhampton	RL4	1.83	133.0	8.50	66.4
Salford Royal	RM3	3.94	285.0	17.40	64.8
Salisbury	RNZ	2.82	81.2	4.67	65.1
Sheffield Teaching Hospitals	RHQ	2.26	315.1	19.57	65.9
Sherwood Forest Hospitals	RK5	4.54	186.0	10.55	67.0
Shrewsbury and Telford Hospital	RXW	4.84	241.0	12.75	61.6
South Tees Hospitals	RTR	2.11	156.6	9.20	59.4
South Warwickshire	RJC	3.40	133.4	7.55	66.1
St Helens and Knowsley Hospitals	RBN	3.23	168.2	12.78	69.7
Stockport	RWJ	3.61	162.9	9.59	63.1
Surrey and Sussex Healthcare	RTP	2.81	102.7	6.85	70.8
Tameside and Glossop Integrated Care	RMP	2.82	95.2	6.02	64.6
Taunton and Somerset	RBA	2.57	102.7	6.11	66.0
Torbay and South Devon	RA9	3.21	163.4	9.63	64.8
United Lincolnshire Hospitals	RWD	2.26	144.8	8.84	58.5
University Hospitals Bristol	RA7	2.35	187.7	11.98	65.4
University Hospitals Coventry and Warwickshire	RKB	4.54	322.7	17.82	65.9
University Hospitals of Leicester	RWE	1.50	193.3	12.79	63.0
University Hospitals of Morecambe Bay	RTX	3.39	178.6	10.23	65.4
University Hospitals of North Midlands	RJE	2.36	220.5	12.97	61.7
Walsall Healthcare	RBK	2.78	101.2	5.67	63.5
Warrington and Halton Hospitals	RWW	5.16	180.3	9.96	66.2
West Hertfordshire Hospitals	RWG	4.02	170.6	10.08	67.4
West Suffolk	RGR	4.75	156.0	8.55	67.5
Whittington Hospital	RKE	4.43	162.8	9.68	64.5

Table 3 continued from previous page

Trust Name	Organisation Code	Managers (% of all staff)	Managers (FTE)	Spend on Management (£ millions)	Staff Survey Management Score
Wirral University Teaching Hospital	RBL	3.39	176.3	9.63	60.8
Wrightington, Wigan and Leigh	RRF	3.68	159.7	9.35	64.0
Wye Valley	RLQ	4.20	110.7	6.07	62.2
Yeovil District Hospital	RA4	4.04	79.1	4.69	68.3
York Teaching Hospital	RCB	3.14	220.1	12.40	64.4

Figure 2: Managers by staff type in 97 acute NHS hospital trusts in 2016/17

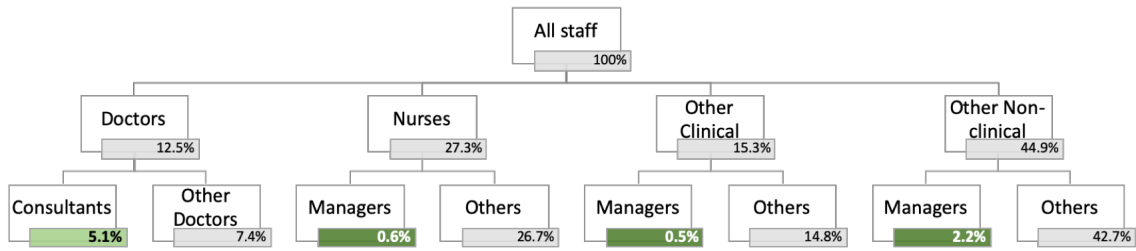


Figure 3: Managers by staff type in 97 acute NHS hospital trusts in 2017/18

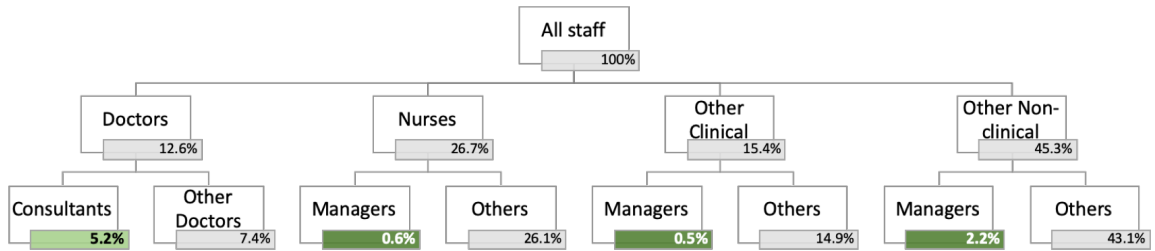


Figure 4: Managers by staff type in 97 acute NHS hospital trusts in 2018/19

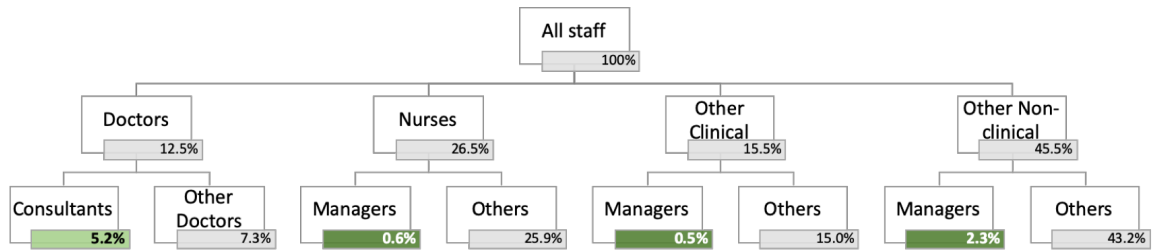


Figure 5: Managers by agenda for change pay grade in in 97 acute NHS hospital trusts in 2016/17

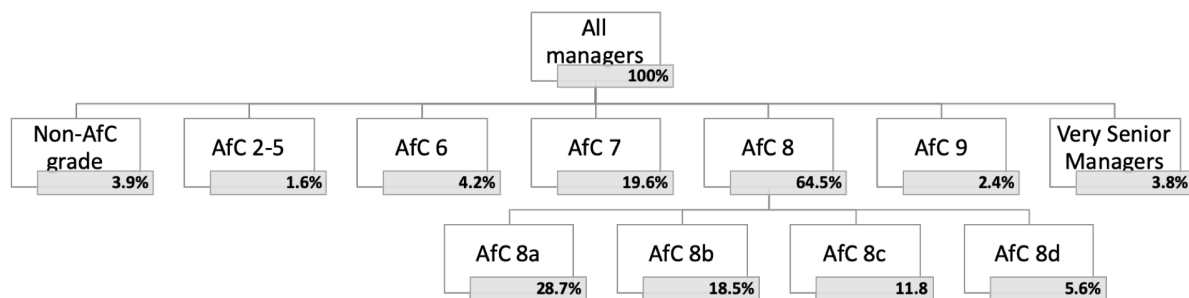


Figure 6: Managers by agenda for change pay grade in in 97 acute NHS hospital trusts in 2017/18

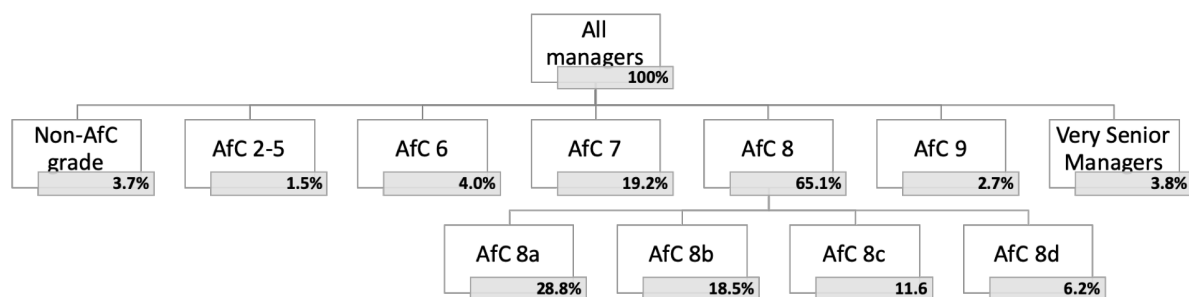


Figure 7: Managers by agenda for change pay grade in in 97 acute NHS hospital trusts in 2018/19

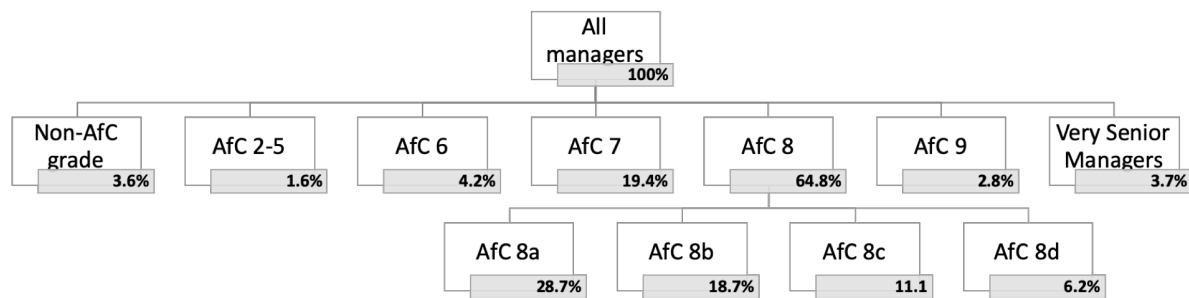


Figure 8: Cross tabulation of agenda for change pay grade and staff type in 97 acute NHS hospital trusts in 2016/17

	Non AfC Grade	Band 2	Band 3	Band 4	Band 5	Band 6	Band 7	Band 8a	Band 8b	Band 8c	Band 8d	Band 9	Very Senior Manager	Total
Manager Central functions	2.29%	0.01%	0.06%	0.11%	0.53%	2.13%	7.84%	11.89%	8.97%	5.80%	3.28%	1.40%	3.49%	47.79%
Manager Clinical support	0.51%	0.00%	0.04%	0.10%	0.40%	0.73%	1.88%	3.49%	2.50%	1.84%	0.72%	0.39%	0.19%	12.79%
Manager Hotel, property & estates	0.12%	0.04%	0.05%	0.02%	0.07%	0.43%	1.01%	1.26%	0.79%	0.44%	0.24%	0.11%	0.09%	4.69%
Manager Scientific, therapeutic & technical	0.07%	0.00%	0.00%	0.02%	0.02%	0.07%	0.27%	0.36%	0.24%	0.16%	0.05%	0.02%	0.01%	1.30%
Nurses & health visitors	0.76%	0.00%	0.00%	0.00%	0.02%	0.57%	6.53%	5.42%	2.62%	1.95%	0.57%	0.16%	0.00%	18.60%
Scientific, therapeutic & technical staff	0.14%	0.00%	0.00%	0.03%	0.09%	0.25%	2.07%	6.27%	3.33%	1.62%	0.70%	0.33%	0.00%	14.83%
Total	3.89%	0.05%	0.15%	0.29%	1.14%	4.17%	19.61%	28.69%	18.45%	11.82%	5.56%	2.42%	3.78%	100.00%

Figure 9: Cross tabulation of agenda for change pay grade and staff type in 97 acute NHS hospital trusts in 2017/18

	Non AFC												Very Senior	Total
	Grade	Band 2	Band 3	Band 4	Band 5	Band 6	Band 7	Band 8a	Band 8b	Band 8c	Band 8d	Band 9	Manager	
Manager Central functions	2.05%	0.01%	0.04%	0.11%	0.53%	1.97%	7.46%	12.05%	9.24%	5.75%	3.82%	1.57%	3.44%	48.04%
Manager Clinical support	0.52%	0.00%	0.03%	0.08%	0.39%	0.81%	2.01%	3.76%	2.51%	1.66%	0.76%	0.39%	0.21%	13.14%
Manager Hotel, property & estates	0.19%	0.01%	0.02%	0.01%	0.12%	0.42%	0.93%	1.22%	0.69%	0.47%	0.20%	0.12%	0.10%	4.50%
Manager Scientific, therapeutic & technical	0.05%	0.00%	0.00%	0.01%	0.02%	0.08%	0.26%	0.31%	0.18%	0.18%	0.05%	0.02%	0.03%	1.19%
Nurses & health visitors	0.79%	0.00%	0.00%	0.00%	0.02%	0.47%	6.35%	5.19%	2.69%	1.95%	0.64%	0.26%	0.00%	18.36%
Scientific, therapeutic & technical staff	0.14%	0.00%	0.00%	0.02%	0.06%	0.28%	2.16%	6.23%	3.22%	1.61%	0.70%	0.32%	0.00%	14.76%
Total	3.73%	0.02%	0.09%	0.23%	1.15%	4.04%	19.18%	28.76%	18.53%	11.63%	6.17%	2.67%	3.78%	100.00%

Figure 10: Cross tabulation of agenda for change pay grade and staff type in 97 acute NHS hospital trusts in 2018/19

	Non AFC												Very Senior	Total
	Grade	Band 2	Band 3	Band 4	Band 5	Band 6	Band 7	Band 8a	Band 8b	Band 8c	Band 8d	Band 9	Manager	
Manager Central functions	1.89%	0.01%	0.06%	0.14%	0.58%	2.19%	7.57%	12.16%	9.47%	5.48%	3.76%	1.68%	3.42%	48.42%
Manager Clinical support	0.53%	0.00%	0.02%	0.05%	0.48%	0.80%	2.03%	3.68%	2.55%	1.56%	0.89%	0.37%	0.18%	13.15%
Manager Hotel, property & estates	0.23%	0.01%	0.00%	0.01%	0.12%	0.34%	0.90%	1.25%	0.76%	0.53%	0.19%	0.11%	0.11%	4.55%
Manager Scientific, therapeutic & technical	0.04%	0.00%	0.00%	0.02%	0.02%	0.08%	0.25%	0.30%	0.19%	0.17%	0.05%	0.02%	0.02%	1.16%
Nurses & health visitors	0.76%	0.00%	0.00%	0.00%	0.00%	0.57%	6.63%	5.21%	2.70%	1.88%	0.70%	0.28%	0.00%	18.73%
Scientific, therapeutic & technical staff	0.11%	0.00%	0.00%	0.02%	0.06%	0.20%	1.99%	6.14%	3.02%	1.51%	0.63%	0.31%	0.00%	13.98%
Total	3.57%	0.01%	0.08%	0.23%	1.26%	4.19%	19.37%	28.74%	18.68%	11.13%	6.23%	2.77%	3.73%	100.00%

Figure 11: Distribution of key variables across 97 acute NHS hospital trusts in 2016/17

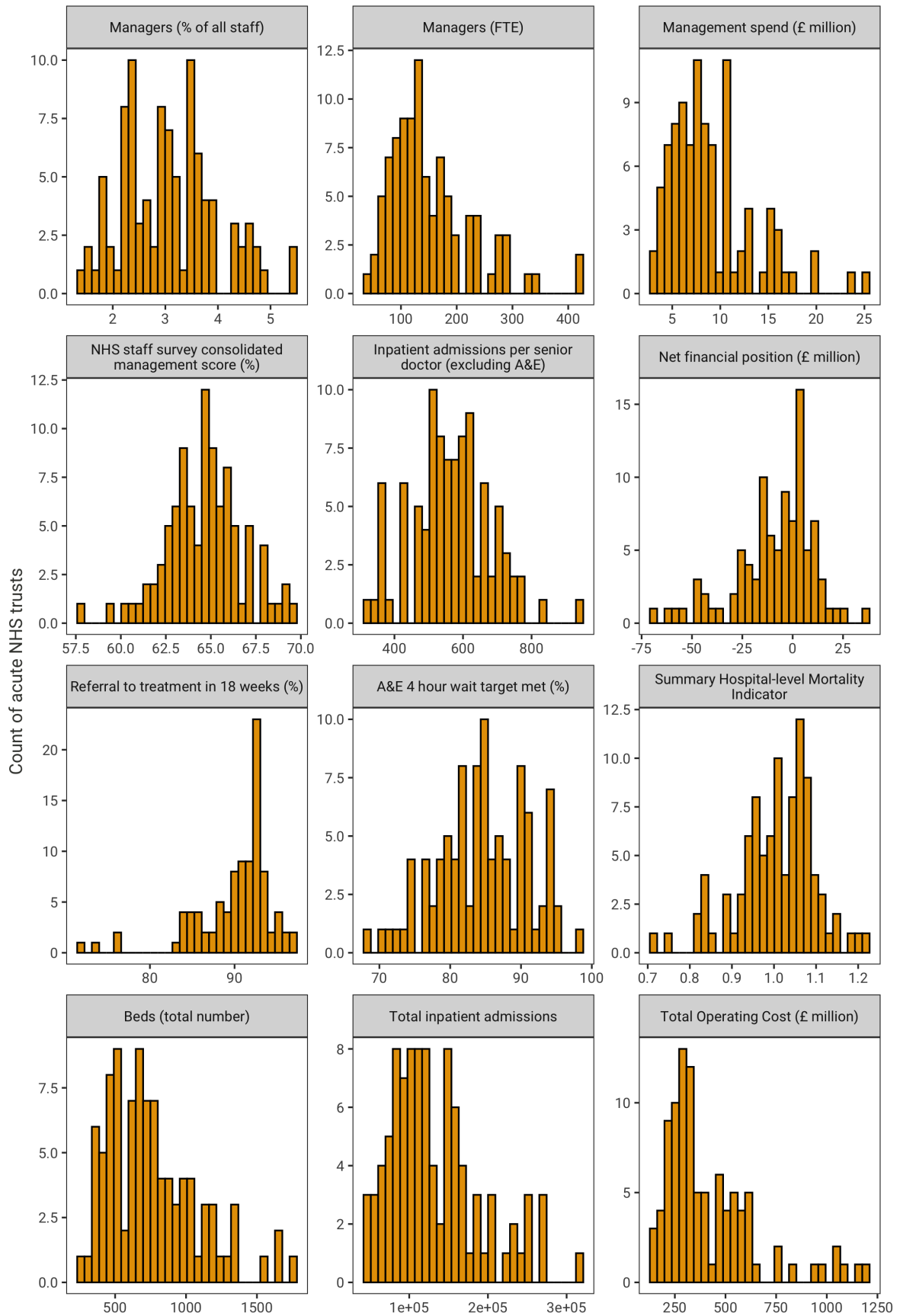


Figure 12: Distribution of key variables across 97 acute NHS hospital trusts in 2017/18

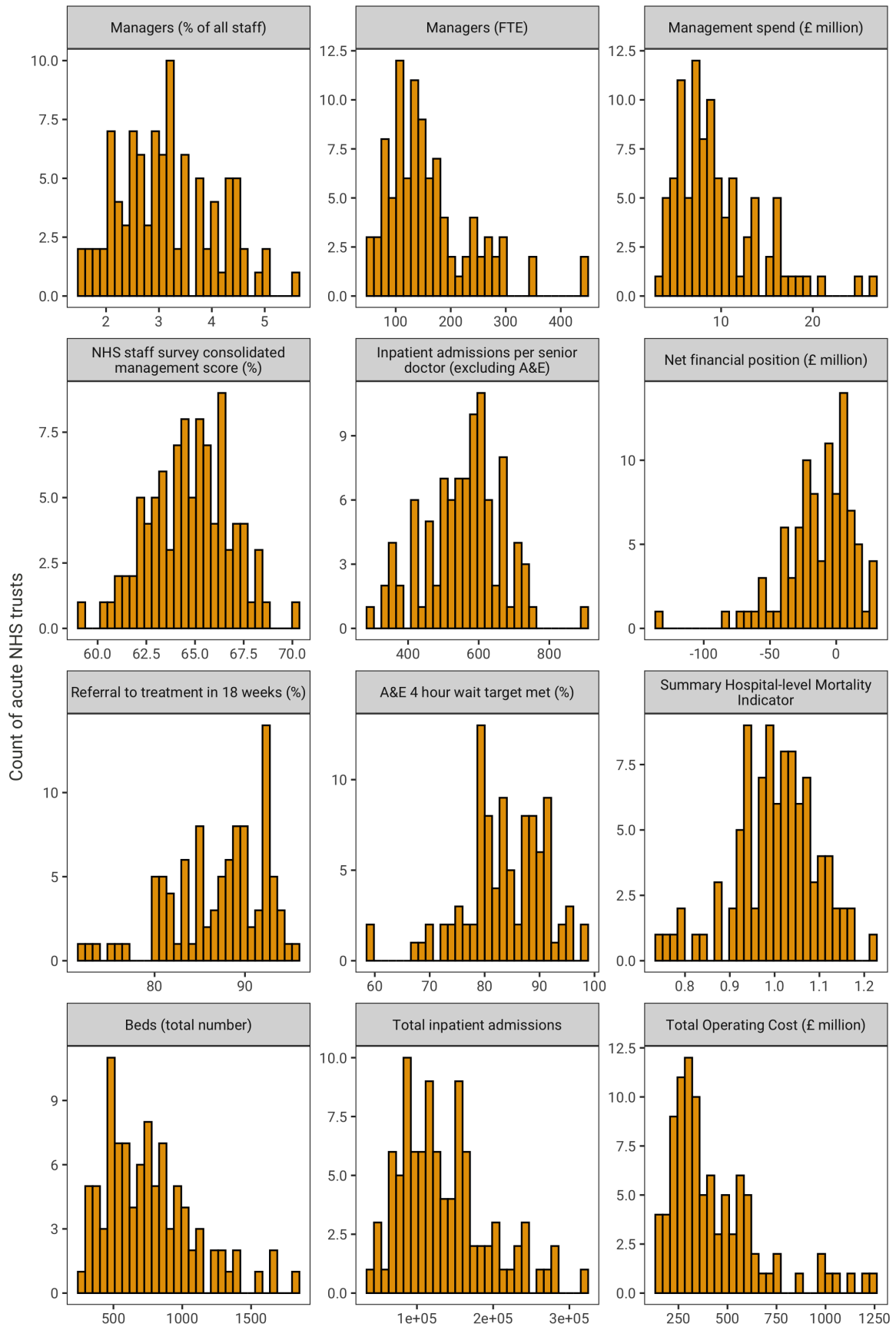


Figure 13: Distribution of key variables across 97 acute NHS hospital trusts in 2018/19

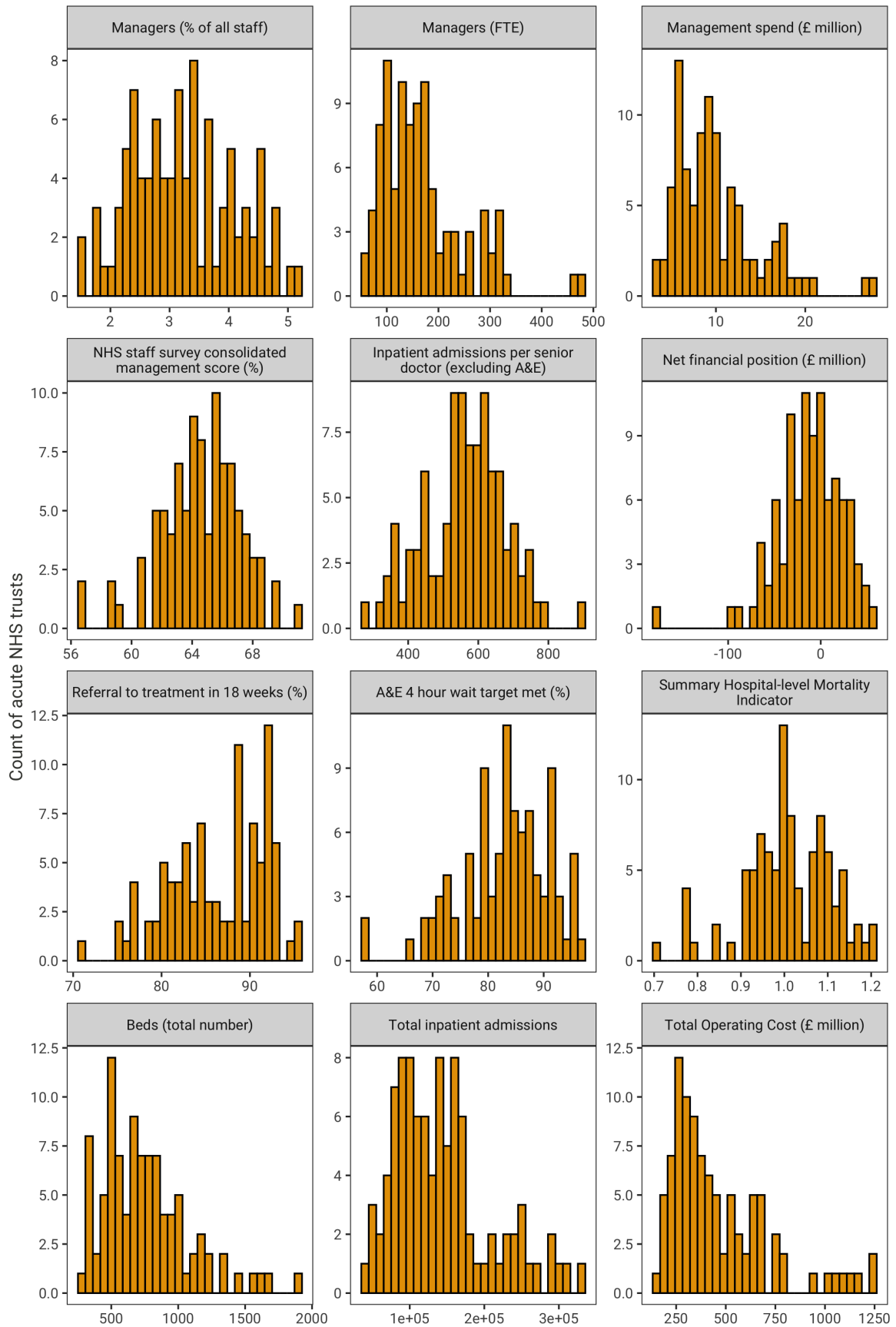


Figure 14: Relationship between management input (%) and resources to be managed across 97 acute NHS hospital trusts in 2016/17

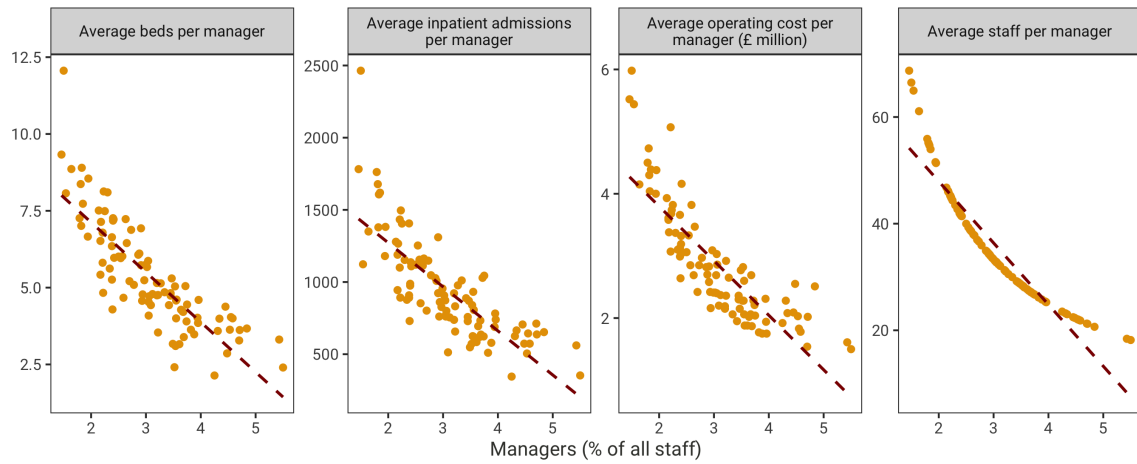


Figure 15: Relationship between management input (%) and resources to be managed across 97 acute NHS hospital trusts in 2017/18

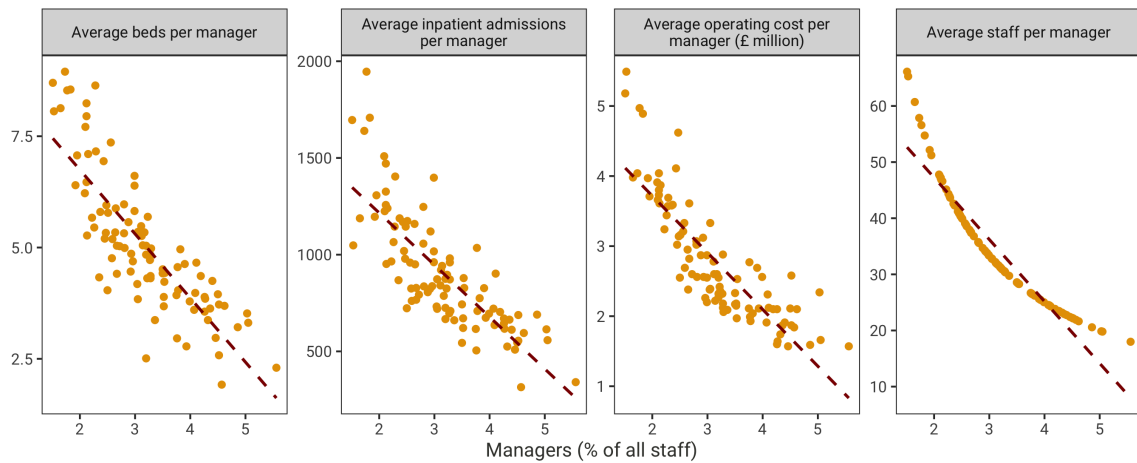


Figure 16: Relationship between management input (%) and resources to be managed across 97 acute NHS hospital trusts in 2018/19

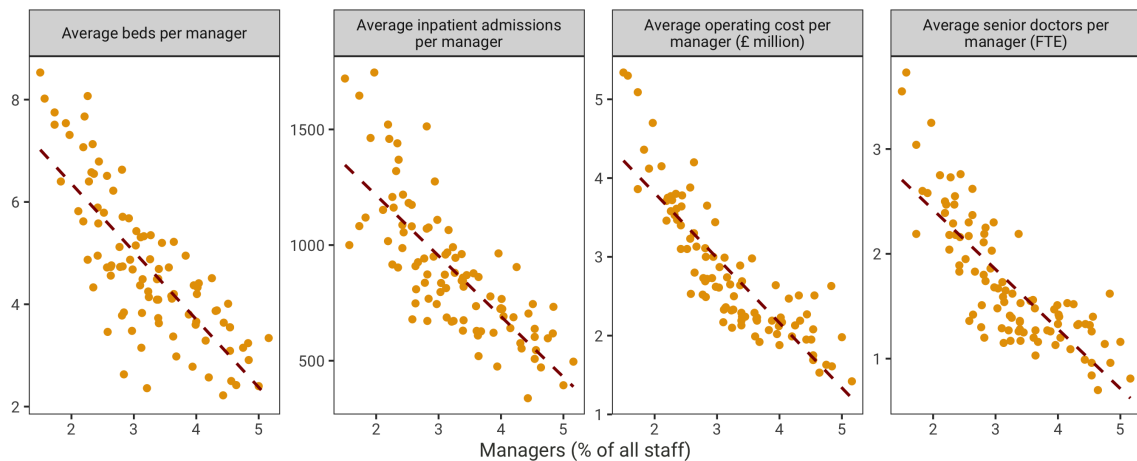


Figure 17: Relationship between management input (FTE) and resources to be managed across 97 acute NHS hospital trusts in 2016/17

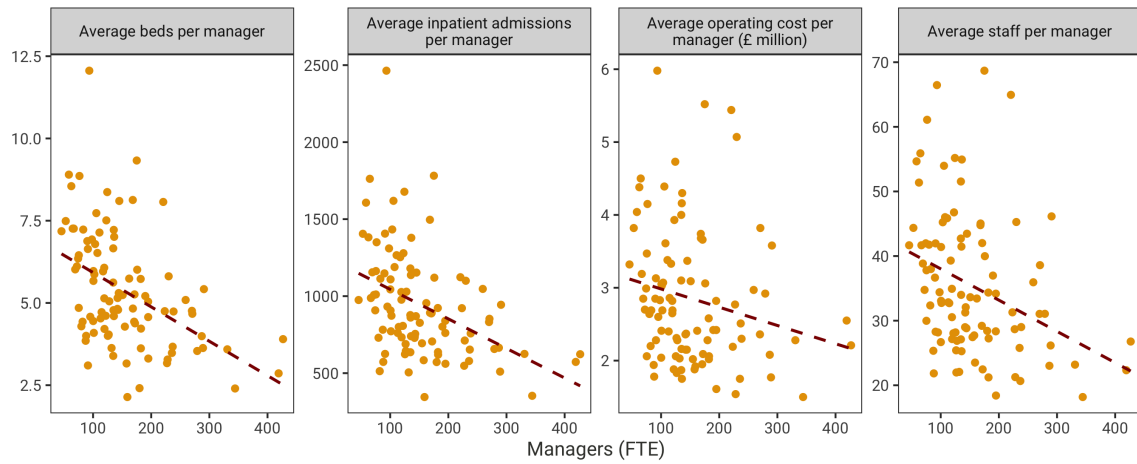


Figure 18: Relationship between management input (FTE) and resources to be managed across 97 acute NHS hospital trusts in 2017/18

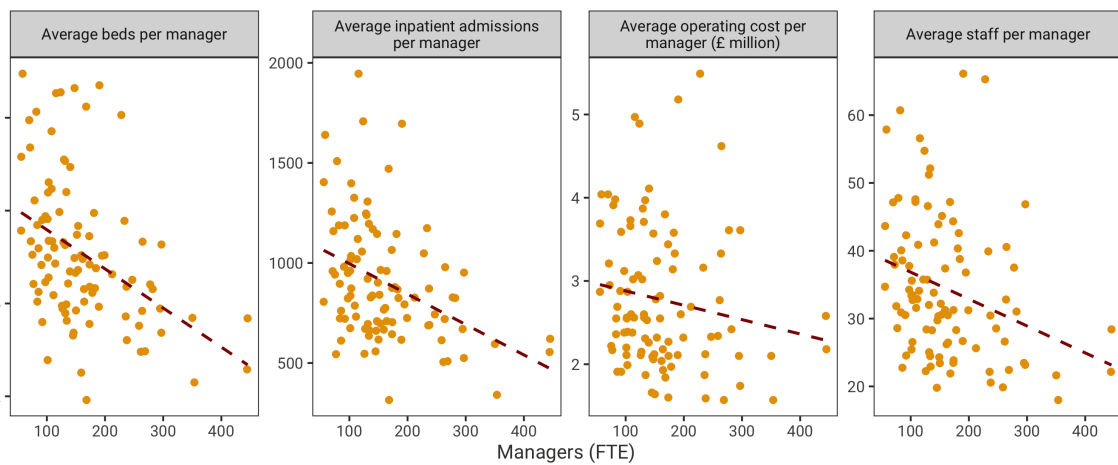
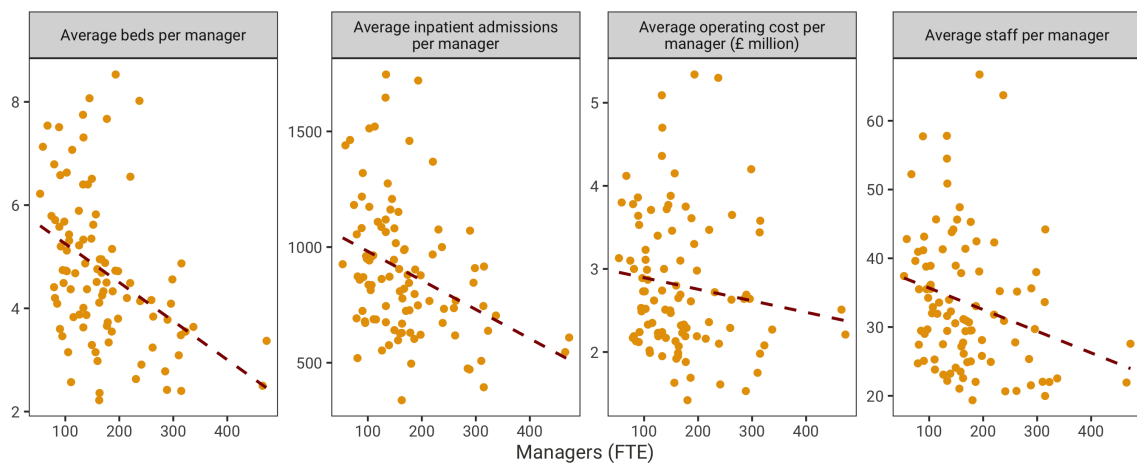


Figure 19: Relationship between management input (FTE) and resources to be managed across 97 acute NHS hospital trusts in 2018/19



2 Supplementary results

Figure 20: Managers time series in acute NHS hospital trusts using basic management definition*

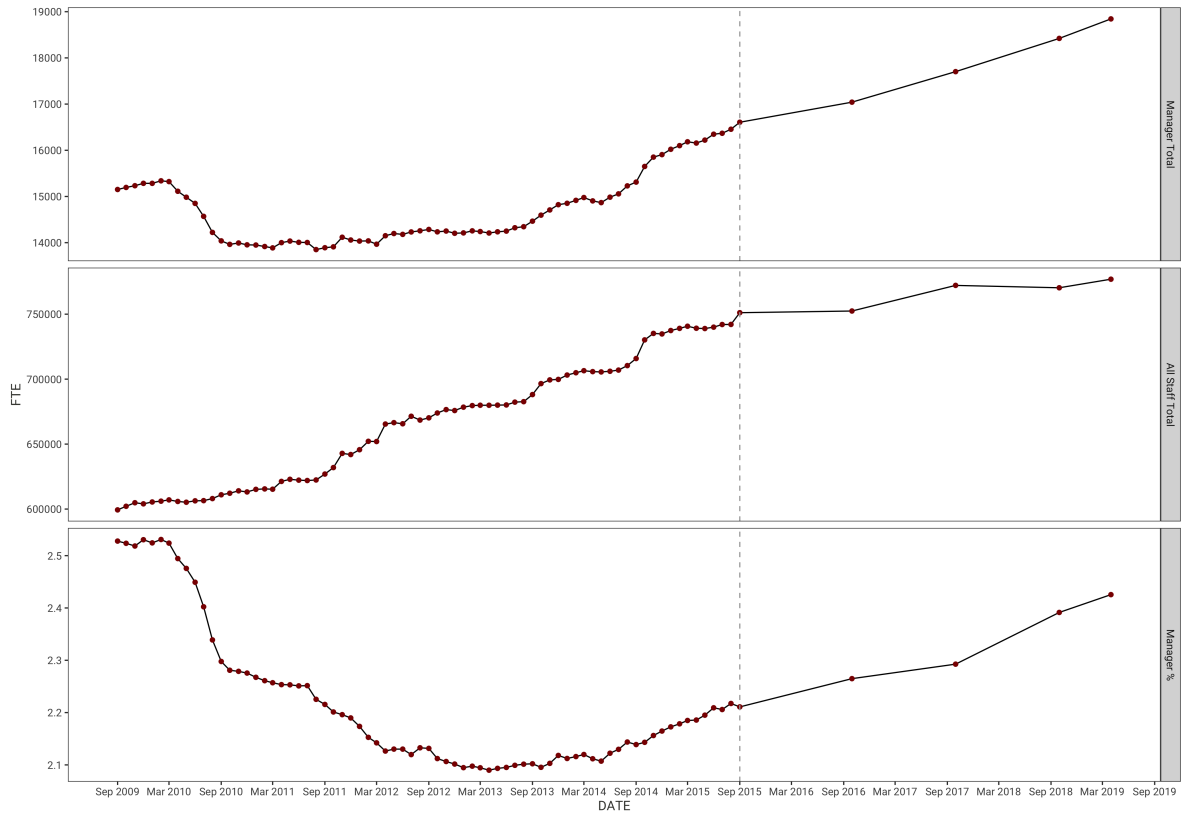


Figure 21: Managers by staff type in all acute NHS hospital trusts in 2016/17

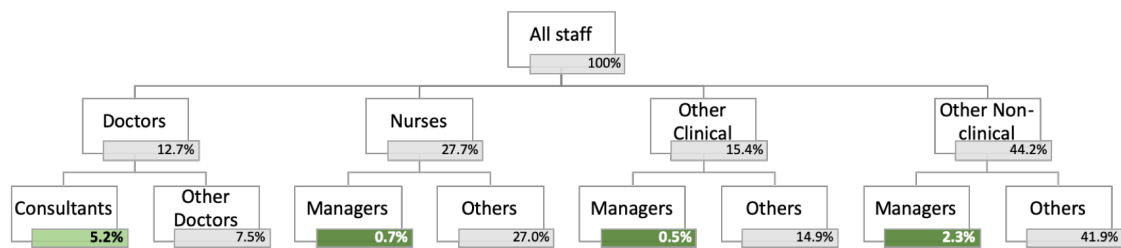


Figure 22: Managers by staff type in all acute NHS hospital trusts in 2017/18

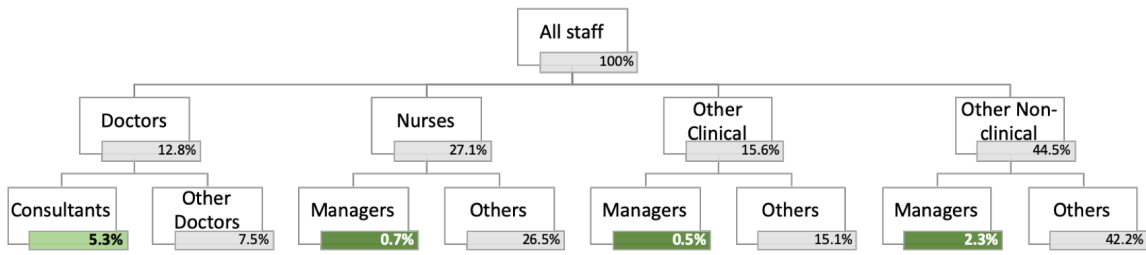


Figure 23: Managers by staff type in all acute NHS hospital trusts in 2018/19

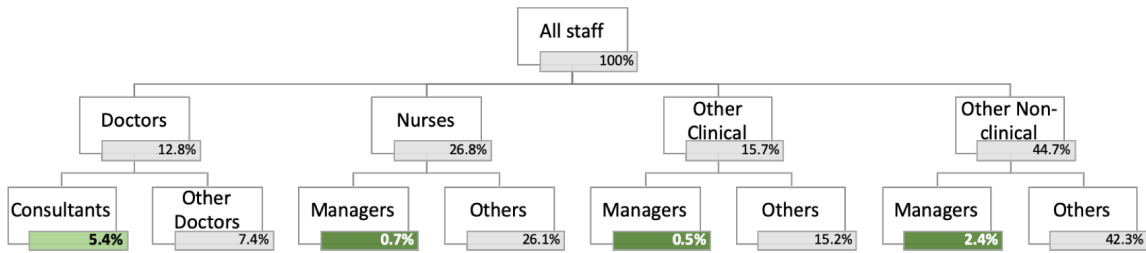


Figure 24: Managers by agenda for change pay grade in all acute NHS hospital trusts in 2016/17

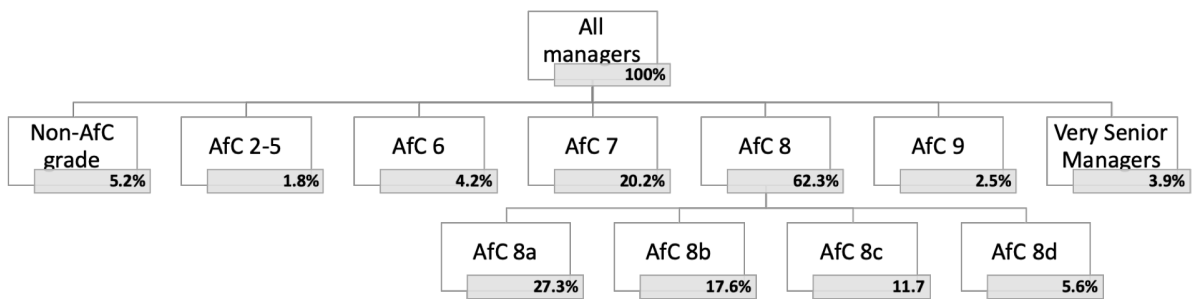


Figure 25: Managers by agenda for change pay grade in all acute NHS hospital trusts in 2017/18

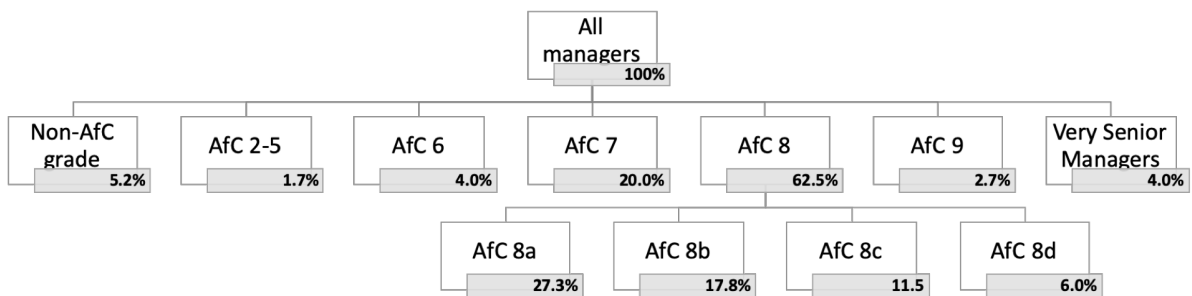


Figure 26: Managers by agenda for change pay grade in all acute NHS hospital trusts in 2018/19

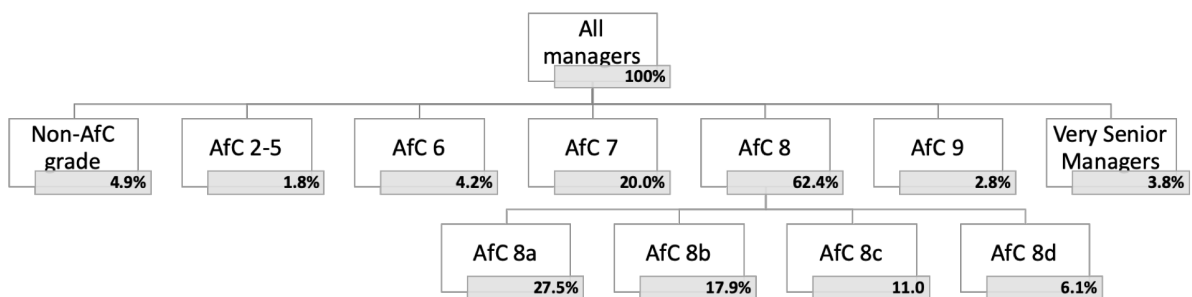


Figure 27: Cross tabulation of agenda for change pay grade and staff type in all acute NHS hospital trusts in 2016/17

	Non AFC Grade	Band 2	Band 3	Band 4	Band 5	Band 6	Band 7	Band 8a	Band 8b	Band 8c	Band 8d	Band 9	Very Senior Manager	Total
Manager Central functions	2.92%	0.02%	0.13%	0.18%	0.58%	2.06%	7.70%	11.17%	8.48%	5.77%	3.26%	1.46%	3.53%	47.26%
Manager Clinical support	0.68%	0.00%	0.02%	0.07%	0.38%	0.84%	2.02%	3.21%	2.49%	1.76%	0.78%	0.41%	0.20%	12.88%
Manager Hotel, property & estates	0.22%	0.03%	0.03%	0.02%	0.11%	0.35%	0.94%	1.15%	0.75%	0.49%	0.28%	0.10%	0.12%	4.59%
Manager Scientific, therapeutic & technical	0.06%	0.00%	0.00%	0.02%	0.02%	0.08%	0.24%	0.34%	0.25%	0.17%	0.07%	0.02%	0.01%	1.28%
Nurses & health visitors	1.01%	0.00%	0.00%	0.00%	0.01%	0.55%	7.35%	5.19%	2.41%	1.94%	0.60%	0.16%	0.00%	19.23%
Scientific, therapeutic & technical staff	0.28%	0.00%	0.00%	0.05%	0.08%	0.30%	1.94%	6.25%	3.25%	1.61%	0.65%	0.35%	0.00%	14.76%
Total	5.17%	0.05%	0.19%	0.34%	1.18%	4.18%	20.20%	27.32%	17.62%	11.74%	5.63%	2.51%	3.86%	100.00%

Figure 28: Cross tabulation of agenda for change pay grade and staff type in all acute NHS hospital trusts in 2017/18

	Non AFC Grade	Band 2	Band 3	Band 4	Band 5	Band 6	Band 7	Band 8a	Band 8b	Band 8c	Band 8d	Band 9	Very Senior Manager	Total
Manager Central functions	2.86%	0.02%	0.07%	0.19%	0.61%	1.91%	7.46%	11.28%	8.75%	5.62%	3.58%	1.59%	3.58%	47.52%
Manager Clinical support	0.69%	0.01%	0.02%	0.07%	0.39%	0.88%	2.20%	3.47%	2.53%	1.66%	0.81%	0.39%	0.23%	13.34%
Manager Hotel, property & estates	0.27%	0.01%	0.01%	0.00%	0.14%	0.35%	0.86%	1.08%	0.68%	0.49%	0.24%	0.10%	0.12%	4.35%
Manager Scientific, therapeutic & technical	0.04%	0.00%	0.00%	0.01%	0.02%	0.09%	0.24%	0.33%	0.21%	0.17%	0.07%	0.02%	0.02%	1.21%
Nurses & health visitors	1.05%	0.00%	0.00%	0.00%	0.01%	0.50%	7.26%	4.93%	2.45%	1.94%	0.64%	0.23%	0.00%	19.00%
Scientific, therapeutic & technical staff	0.29%	0.00%	0.00%	0.05%	0.06%	0.31%	1.96%	6.20%	3.13%	1.58%	0.63%	0.35%	0.00%	14.57%
Total	5.20%	0.04%	0.11%	0.32%	1.23%	4.03%	19.98%	27.29%	17.75%	11.46%	5.97%	2.68%	3.95%	100.00%

Figure 29: Cross tabulation of agenda for change pay grade and staff type in all acute NHS hospital trusts in 2018/19

	Non AFC Grade	Band 2	Band 3	Band 4	Band 5	Band 6	Band 7	Band 8a	Band 8b	Band 8c	Band 8d	Band 9	Very Senior Manager	Total
Manager Central functions	2.64%	0.04%	0.09%	0.20%	0.64%	2.11%	7.61%	11.45%	8.86%	5.48%	3.53%	1.67%	3.51%	47.82%
Manager Clinical support	0.67%	0.01%	0.02%	0.03%	0.45%	0.92%	2.24%	3.53%	2.51%	1.58%	0.91%	0.42%	0.18%	13.48%
Manager Hotel, property & estates	0.31%	0.01%	0.00%	0.02%	0.14%	0.29%	0.86%	1.13%	0.72%	0.52%	0.26%	0.09%	0.13%	4.47%
Manager Scientific, therapeutic & technical	0.04%	0.00%	0.00%	0.01%	0.01%	0.09%	0.23%	0.30%	0.23%	0.15%	0.09%	0.02%	0.01%	1.17%
Nurses & health visitors	0.99%	0.00%	0.00%	0.00%	0.00%	0.57%	7.28%	4.93%	2.52%	1.85%	0.68%	0.27%	0.00%	19.09%
Scientific, therapeutic & technical staff	0.27%	0.00%	0.00%	0.04%	0.06%	0.24%	1.81%	6.11%	3.03%	1.47%	0.59%	0.33%	0.00%	13.94%
Total	4.92%	0.06%	0.11%	0.30%	1.30%	4.23%	20.03%	27.46%	17.87%	11.03%	6.06%	2.79%	3.84%	100.00%

Figure 30: Distribution of key variables across all acute NHS hospital trusts in 2016/17

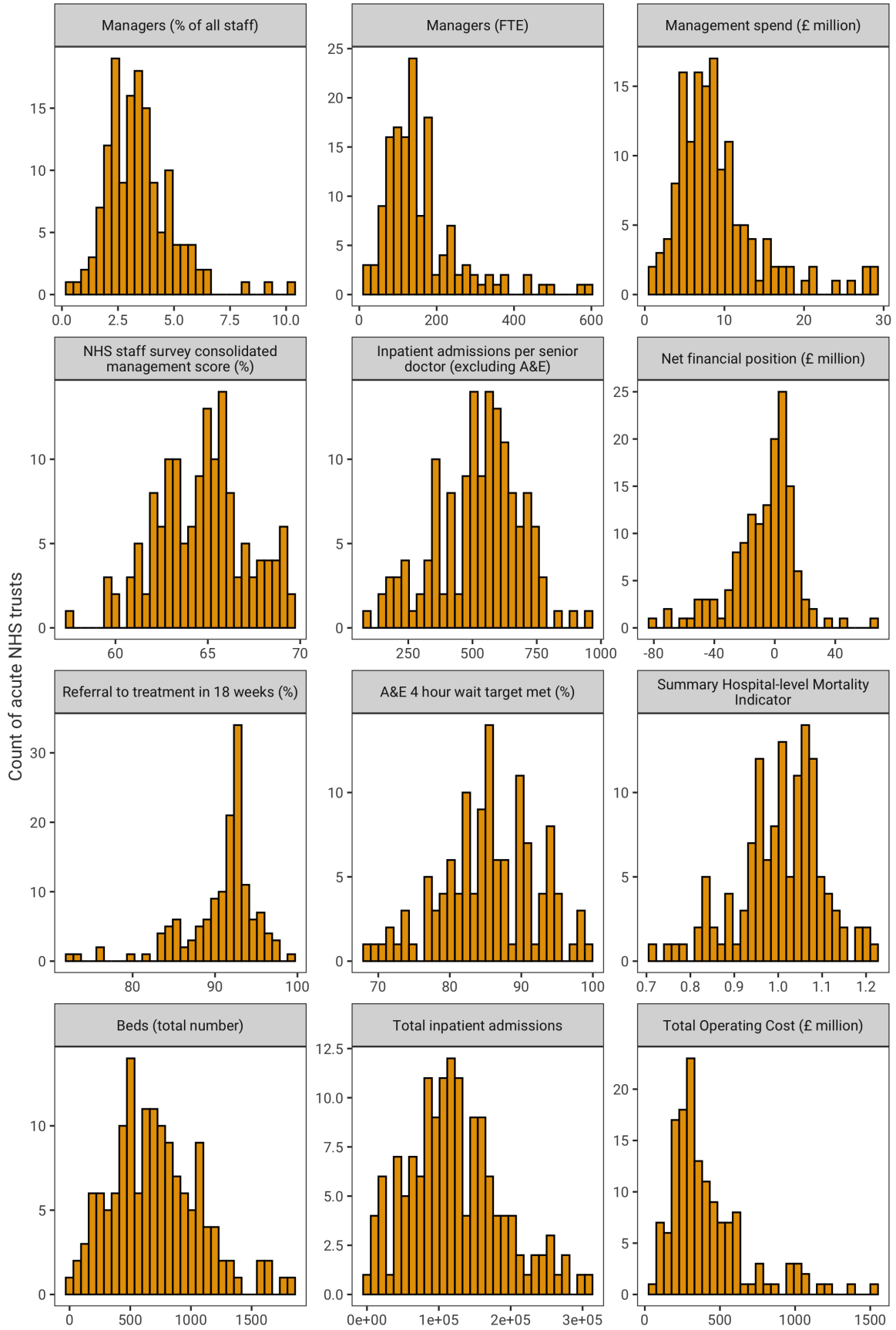


Figure 31: Distribution of key variables across all acute NHS hospital trusts in 2017/18

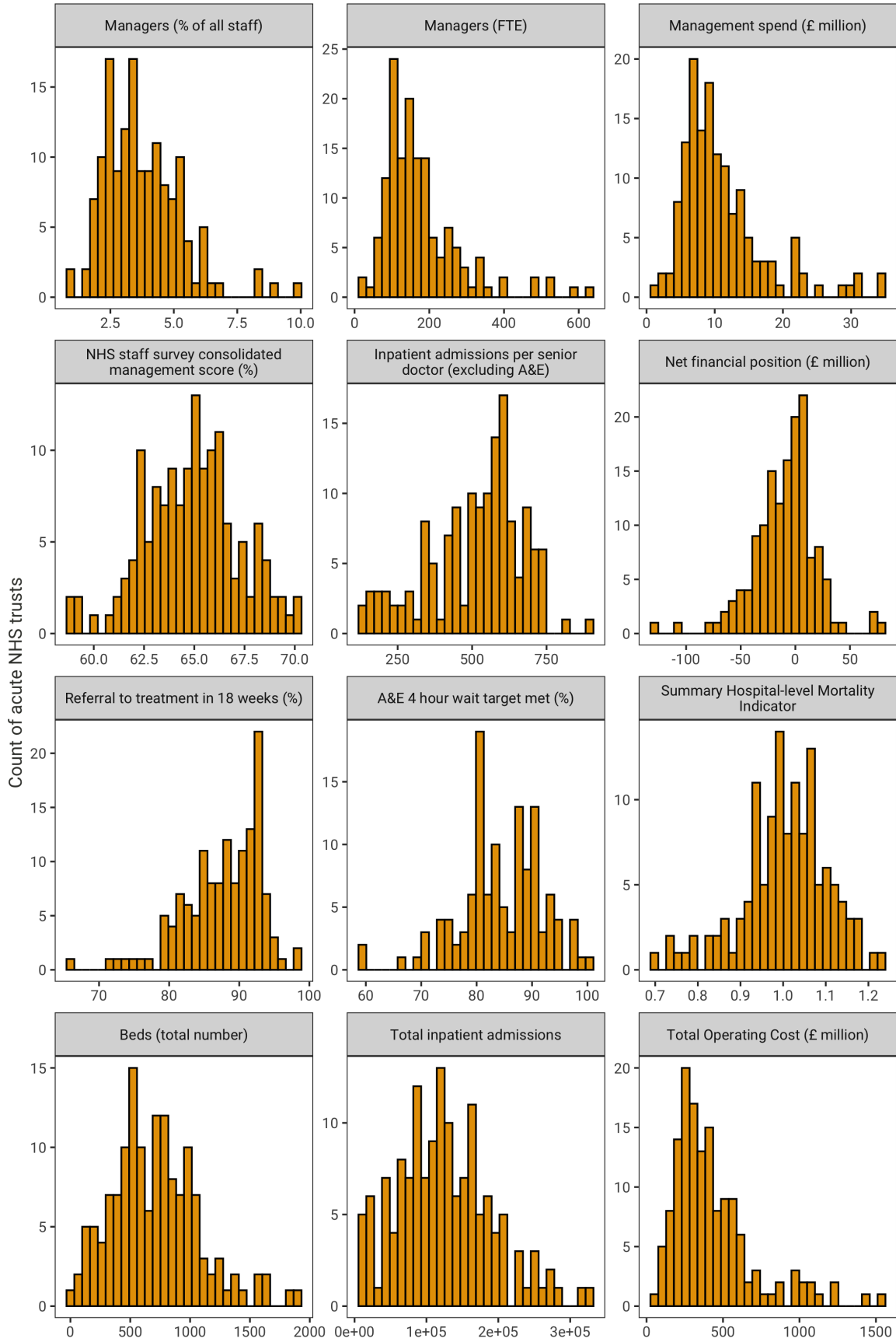


Figure 32: Distribution of key variables across all acute NHS hospital trusts in 2018/19

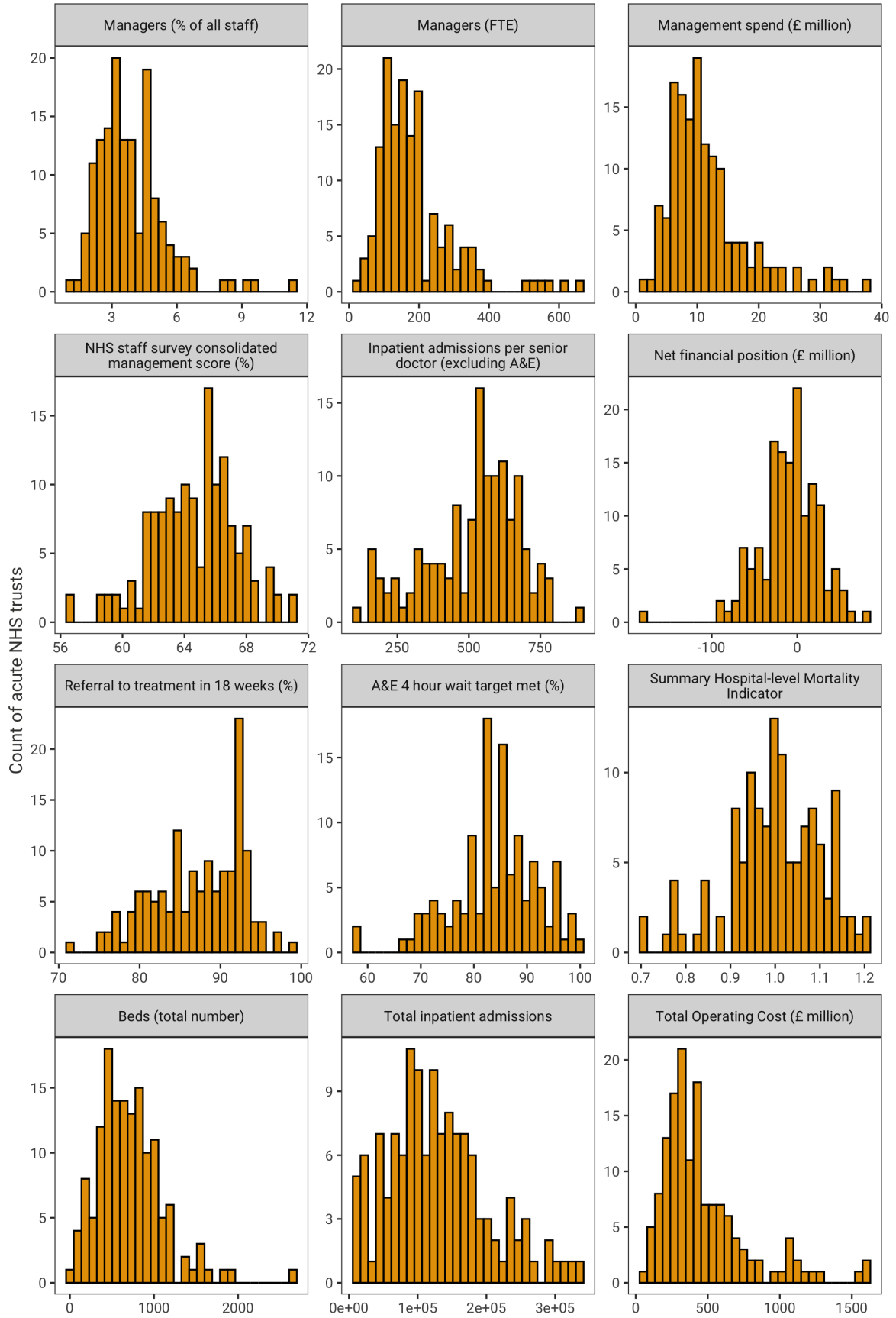


Figure 33: Relationship between management input (%) and resources to be managed across all acute NHS hospital trusts in 2016/17

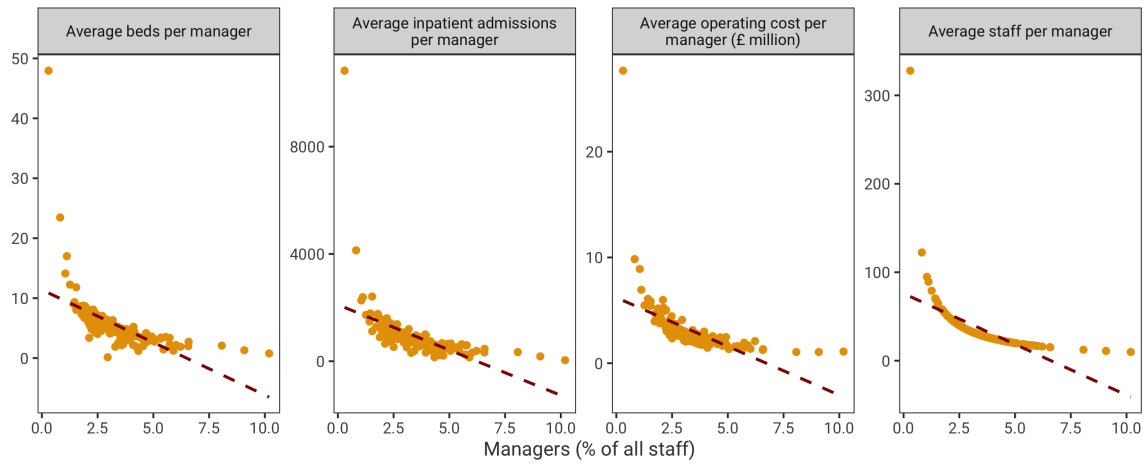


Figure 34: Relationship between management input (%) and resources to be managed across all acute NHS hospital trusts in 2017/18

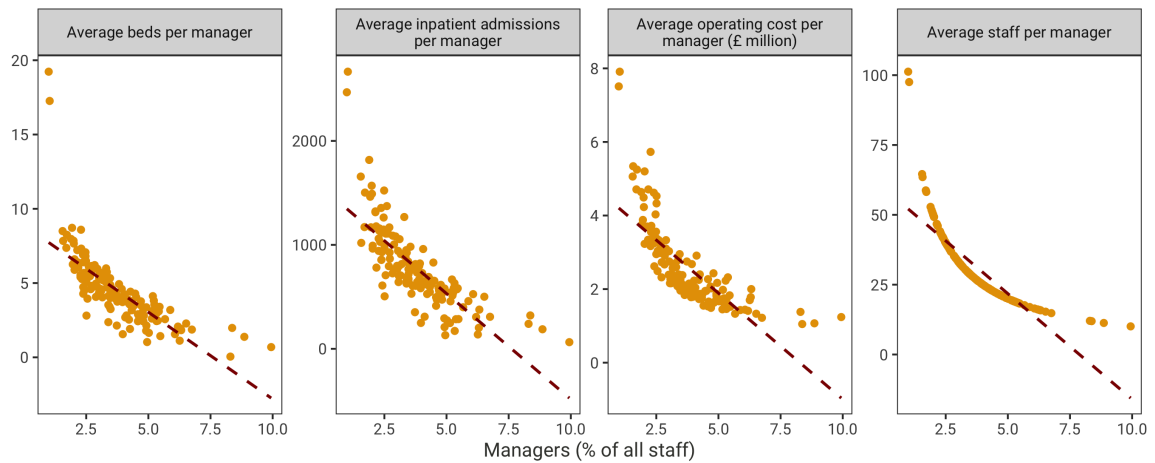


Figure 35: Relationship between management input (%) and resources to be managed across all acute NHS hospital trusts in 2018/19

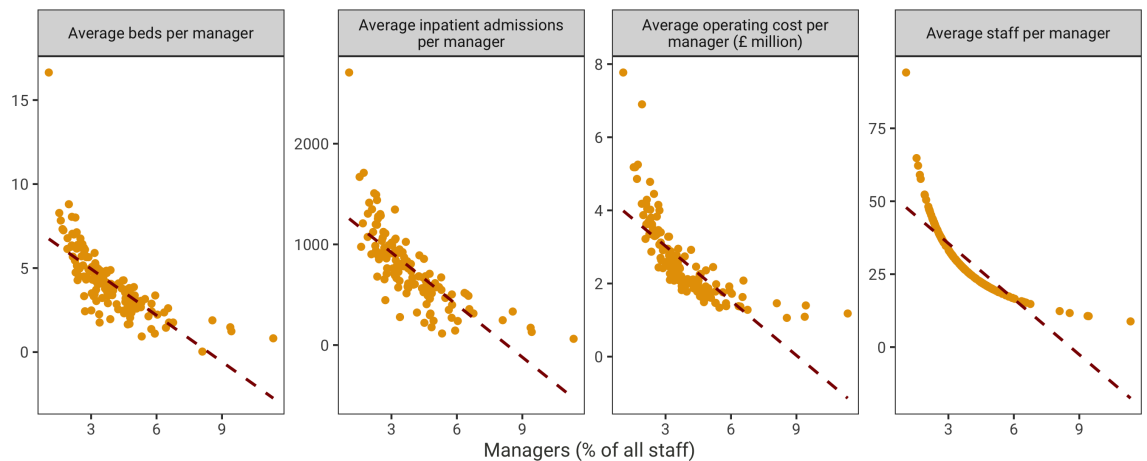


Figure 36: Relationship between management input (FTE) and resources to be managed across all acute NHS hospital trusts in 2016/17

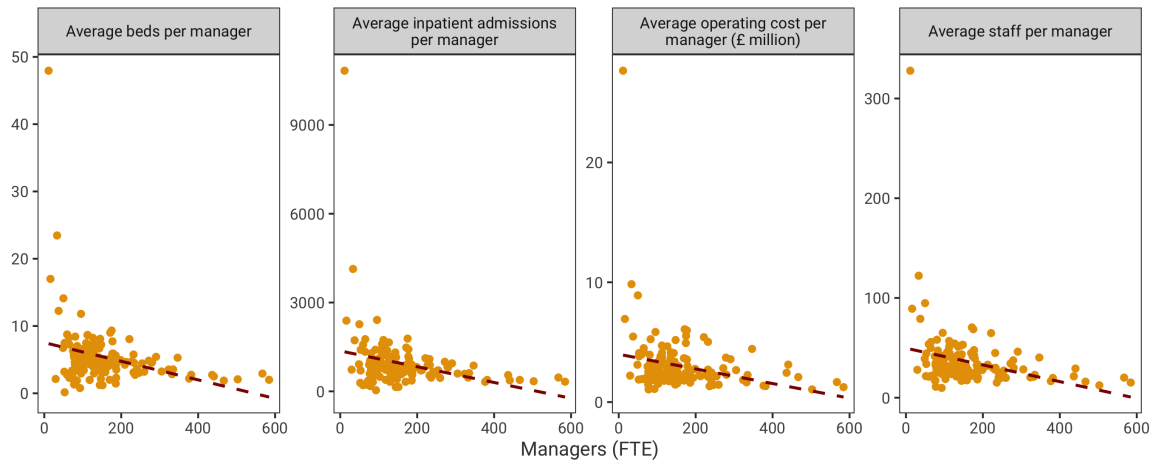


Figure 37: Relationship between management input (FTE) and resources to be managed across all acute NHS hospital trusts in 2017/18

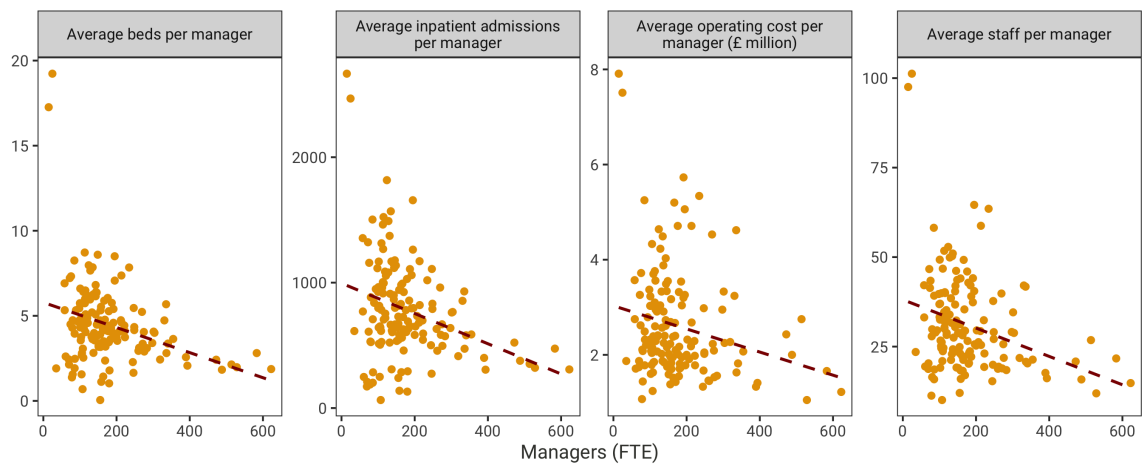


Figure 38: Relationship between management input (FTE) and resources to be managed across all acute NHS hospital trusts in 2018/19

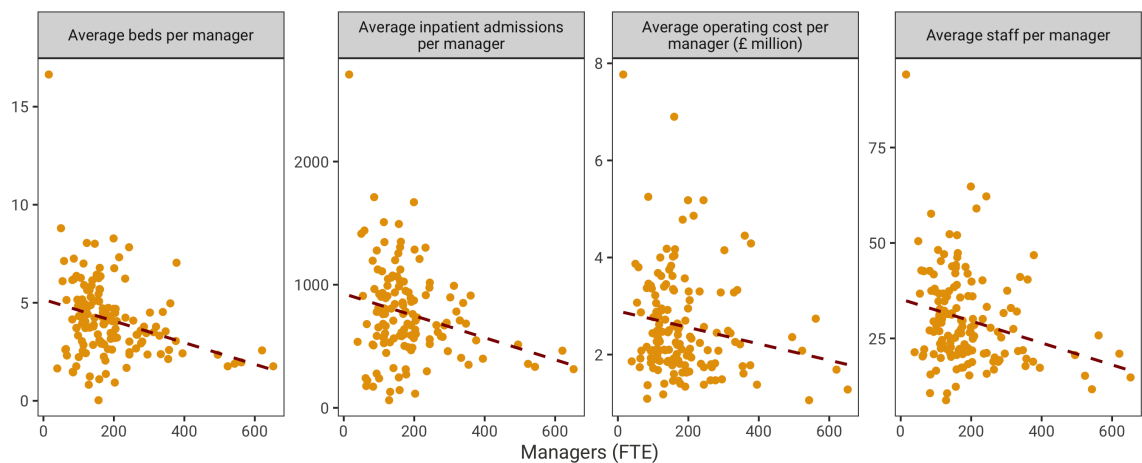


Table 4: Inpatient admissions per senior doctor (excluding A&E) against Management (FTE)

	<i>Dependent variable:</i>								
	Inpatient admissions per senior doctor (excluding A&E)								
	<i>cross-section</i> 2016/17	<i>cross-section</i> 2017/18	<i>cross-section</i> 2018/19	<i>pooled</i> 2016/17-2018/19	<i>fixed effects</i> 2016/17-2018/19	<i>lagged dependent variable</i> 2016/17-2018/19	<i>pooled</i> 2016/17-2018/19	<i>fixed effects</i> 2016/17-2018/19	<i>lagged dependent variable</i> 2016/17-2018/19
(1)	(2)	(3)	(4)	(5)	(6)	(7)	(8)	(9)	
Managers (FTE)	-0.225 (0.191)	-0.323 (0.197)	-0.248 (0.204)	-0.263** (0.109)	-0.264*** (0.092)	-0.083 (0.069)			
Managers (FTE) squared	0.0004 (0.0003)	0.001* (0.0003)	0.0004 (0.0003)	0.0004*** (0.0002)	0.001*** (0.0002)	0.0002 (0.0001)			
Managers (FTE - basic definition)							-0.343** (0.143)	-0.412** (0.175)	-0.120 (0.089)
Managers (FTE basic definition) squared							0.001** (0.0003)	0.002*** (0.0004)	0.0002 (0.0002)
Senior doctors (FTE)	-1.803*** (0.173)	-1.715*** (0.164)	-1.487*** (0.164)	-1.635*** (0.092)	-1.788*** (0.111)	-0.435*** (0.071)	-1.597*** (0.089)	-1.795*** (0.112)	-0.423*** (0.068)
NHS staff survey consolidated management score (%)	-2.035 (2.288)	0.974 (2.325)	-0.429 (2.127)	-0.440 (1.242)	-1.348 (0.865)	0.263 (0.763)	-0.155 (1.245)	-1.083 (0.868)	0.430 (0.765)
Beds (total number)	0.006 (0.062)	-0.029 (0.051)	0.018 (0.046)	-0.008 (0.028)	0.046 (0.036)	-0.041** (0.016)	-0.009 (0.028)	0.038 (0.036)	-0.041** (0.016)
Total Operating Cost (£ million)	0.415*** (0.090)	0.459*** (0.094)	0.293*** (0.100)	0.377*** (0.053)	0.098 (0.069)	0.105*** (0.035)	0.358*** (0.052)	0.110 (0.069)	0.101*** (0.034)
Total inpatient admissions	0.002*** (0.0003)	0.002*** (0.0003)	0.002*** (0.0002)	0.002*** (0.0001)	0.003*** (0.0002)	0.001*** (0.0001)	0.002*** (0.0001)	0.003*** (0.0002)	0.001*** (0.0001)
Female share of inpatient admissions (%)	-0.156 (1.621)	0.109 (1.470)	-0.457 (1.461)	-0.070 (0.847)	-3.001** (1.254)	-0.692 (0.508)	0.019 (0.846)	-2.874** (1.255)	-0.695 (0.509)
Inpatient admissions age 0-14 (%)	-7.520 (6.691)	9.336 (6.955)	5.166 (6.823)	2.099 (3.717)	-1.648 (1.993)	2.406 (2.361)	2.063 (3.712)	-2.282 (2.002)	2.245 (2.366)
Inpatient admissions age 15-29 (%)	8.449 (7.166)	25.601*** (7.484)	18.313** (7.385)	17.281*** (4.020)	-0.208 (2.430)	4.731* (2.627)	17.323*** (4.018)	-0.270 (2.436)	4.650* (2.636)
Inpatient admissions age 30-44 (%)	-10.705 (7.094)	3.882 (7.519)	3.250 (7.780)	-1.564 (4.062)	-1.547 (2.632)	1.525 (2.600)	-1.871 (4.055)	-1.836 (2.627)	1.268 (2.606)
Inpatient admissions age 45-59 (%)	-11.444 (7.323)	6.544 (7.477)	-0.183 (7.355)	-2.040 (4.029)	1.905 (2.196)	2.770 (2.548)	-1.905 (4.021)	1.215 (2.190)	2.654 (2.554)
Inpatient admissions age 60-74 (%)	-11.848* (7.002)	5.193 (7.277)	3.084 (7.067)	-1.287 (3.893)	-1.670 (2.278)	1.230 (2.448)	-1.398 (3.896)	-1.036 (2.274)	1.083 (2.457)
Inpatient admissions age 75-89 (%)	5.231 (7.619)	20.785*** (10.543)	14.873* (7.864)	13.384*** (4.201)	0.559 (2.220)	4.013 (2.712)	13.512*** (4.190)	1.389 (2.207)	3.863 (2.718)
Inpatient admissions age 90+ (%)	-21.492** (10.261)	-4.449 (10.543)	-5.803 (11.716)	-10.817* (5.995)	-1.552 (3.641)	1.294 (3.812)	-10.463* (5.981)	-1.399 (3.644)	1.104 (3.821)
Specialist status	-153.576*** (33.274)	-186.125*** (31.308)	-184.187*** (34.030)	-177.400*** (18.350)		-46.646*** (12.332)	-174.655*** (18.415)		-47.157*** (12.359)
Financial Year 2017/18				0.886 (6.741)			-0.331 (6.690)		
Financial Year 2018/19				1.906 (7.182)			1.232 (7.124)		
Lagged Inpatient admissions per senior doctor (excluding A&E)						0.774*** (0.028)			0.772*** (0.028)
Constant	1,284.398* (712.702)	-578.544 (703.177)	-40.978 (706.050)	237.150 (385.910)		-119.176 (241.330)	212.452 (385.684)		-114.564 (242.014)
Observations	151	149	133	433	433	282	433	433	282
R ²	0.879	0.885	0.888	0.880	0.667	0.971	0.880	0.668	0.970
Adjusted R ²	0.865	0.871	0.873	0.875	0.457	0.969	0.874	0.458	0.969
F Statistic	61.099*** (df = 16; 134)	63.282*** (df = 16; 132)	57.568*** (df = 16; 116)	168.274*** (df = 18; 414)	35.355*** (df = 15; 265)	512.707*** (df = 17; 264)	168.202*** (df = 18; 414)	35.513*** (df = 15; 265)	510.784*** (df = 17; 264)

Note:

*p<0.1; **p<0.05; ***p<0.01

Table 5: log Inpatient admissions per senior doctor (excluding A&E) against log Management (FTE)

	<i>Dependent variable:</i>								
	log Inpatient admissions per senior doctor (excluding A&E)								
	<i>cross-section</i> 2016/17	<i>cross-section</i> 2017/18	<i>cross-section</i> 2018/19	<i>pooled</i> 2016/17-2018/19	<i>fixed effects</i> 2016/17-2018/19	<i>lagged dependent variable</i> 2016/17-2018/19	<i>pooled</i> 2016/17-2018/19	<i>fixed effects</i> 2016/17-2018/19	<i>lagged dependent variable</i> 2016/17-2018/19
(1)	(2)	(3)	(4)	(5)	(6)	(7)	(8)	(9)	
log Managers (FTE)	0.024 (0.028)	0.071** (0.030)	0.094*** (0.032)	0.055*** (0.017)	0.003 (0.012)	0.035*** (0.010)			
log Managers (FTE - basic definition)							0.064*** (0.017)	0.003 (0.021)	0.023** (0.010)
log Senior doctors (FTE)	-0.387*** (0.065)	-0.427*** (0.064)	-0.408*** (0.064)	-0.398*** (0.036)	-0.965*** (0.061)	-0.158*** (0.022)	-0.409*** (0.061)	-0.965*** (0.061)	-0.151*** (0.022)
log NHS staff survey consolidated management score (%)	-0.221 (0.348)	-0.337 (0.327)	-0.469 (0.292)	-0.319* (0.180)	-0.123 (0.118)	-0.143 (0.098)	-0.359** (0.181)	-0.124 (0.118)	-0.119 (0.100)
log Beds (total number)	0.114** (0.044)	0.046 (0.037)	0.016 (0.035)	0.055** (0.022)	0.205*** (0.037)	-0.025** (0.012)	0.057*** (0.022)	0.205*** (0.042)	-0.024** (0.012)
Total Operating Cost (£ million)	-0.001*** (0.0001)	-0.001*** (0.0001)	-0.001*** (0.0001)	-0.001*** (0.0001)	-0.0004*** (0.0001)	-0.0002*** (0.00004)	-0.001*** (0.0001)	-0.0004*** (0.0001)	-0.0002*** (0.00004)
Total inpatient admissions	0.00000*** (0.00000)	0.00000*** (0.00000)	0.00000*** (0.00000)	0.00000*** (0.00000)	0.00001*** (0.00000)	0.00000*** (0.00000)	0.00000*** (0.00000)	0.00001*** (0.00000)	0.00000*** (0.00000)
Female share of inpatient admissions (%)	0.005 (0.004)	0.001 (0.003)	0.002 (0.003)	0.003 (0.002)	0.007** (0.003)	-0.002 (0.001)	0.002 (0.002)	0.007** (0.003)	-0.002* (0.001)
Inpatient admissions age 0-14 (%)	-0.002 (0.015)	0.026* (0.015)	0.018 (0.015)	0.013 (0.008)	-0.003 (0.004)	0.003 (0.005)	0.011 (0.008)	-0.003 (0.004)	0.003 (0.005)
Inpatient admissions age 15-29 (%)	0.012 (0.017)	0.047*** (0.017)	0.035** (0.016)	0.029*** (0.009)	-0.020*** (0.005)	0.006 (0.005)	0.029*** (0.009)	-0.021*** (0.005)	0.006 (0.005)
Inpatient admissions age 30-44 (%)	0.002 (0.016)	0.023 (0.016)	0.022 (0.017)	0.015 (0.009)	0.012** (0.006)	0.004 (0.005)	0.013 (0.009)	0.012** (0.006)	0.004 (0.005)
Inpatient admissions age 45-59 (%)	-0.018 (0.016)	0.014 (0.016)	0.002 (0.016)	-0.001 (0.009)	-0.004 (0.005)	-0.001 (0.005)	-0.003 (0.009)	-0.004 (0.005)	-0.001 (0.005)
Inpatient admissions age 60-74 (%)	-0.023 (0.016)	0.013 (0.016)	0.009 (0.015)	-0.002 (0.009)	-0.009* (0.005)	0.004 (0.005)	-0.005 (0.009)	-0.009* (0.005)	0.004 (0.005)
Inpatient admissions age 75-89 (%)	0.049*** (0.017)	0.054*** (0.017)	0.044** (0.017)	0.049*** (0.009)	0.018*** (0.005)	0.003 (0.006)	0.047*** (0.009)	0.018*** (0.005)	0.003 (0.006)
Inpatient admissions age 90+ (%)	-0.077*** (0.024)	-0.011 (0.023)	-0.012 (0.026)	-0.037*** (0.014)	-0.010 (0.008)	0.003 (0.008)	-0.037*** (0.014)	-0.010 (0.008)	0.002 (0.008)
Specialist status	-0.418*** (0.096)	-0.609*** (0.084)	-0.664*** (0.091)	-0.563*** (0.051)		-0.239*** (0.031)	-0.561*** (0.051)		-0.239*** (0.031)
Financial Year 2017/18				-0.009 (0.015)			-0.005 (0.015)		
Financial Year 2018/19				-0.002 (0.016)			0.001 (0.016)		
Lagged log Inpatient admissions per senior doctor (excluding A&E)						0.761*** (0.025)			0.765*** (0.025)
Constant	7.856*** (2.298)	6.237*** (2.074)	7.607*** (1.981)	7.231*** (1.175)		2.583*** (0.656)	7.613*** (1.183)		2.488*** (0.668)
Observations	151	149	133	433	433	282	433	433	282
R ²	0.886	0.908	0.917	0.899	0.656	0.981	0.900	0.655	0.981
Adjusted R ²	0.873	0.898	0.906	0.895	0.441	0.980	0.896	0.440	0.979
F Statistic	69.841*** (df = 15; 135)	87.837*** (df = 15; 133)	86.191*** (df = 15; 117)	217.583*** (df = 17; 415)	36.155*** (df = 14; 266)	853.293*** (df = 16; 265)	219.202*** (df = 17; 415)	36.141*** (df = 14; 266)	833.108*** (df = 16; 265)

Note:

*p<0.1; **p<0.05; ***p<0.01

Table 6: Inpatient admissions per senior doctor (excluding A&E) against Management Spend (£)

	<i>Dependent variable:</i>					
	Inpatient admissions per senior doctor (excluding A&E)					
	<i>cross-section</i> 2016/17	<i>cross-section</i> 2017/18	<i>cross-section</i> 2018/19	<i>pooled</i> 2016/17-2018/19	<i>fixed effects</i> 2016/17-2018/19	<i>lagged dependent variable</i> 2016/17-2018/19
(1)	(2)	(3)	(4)	(5)	(6)	
Management spend (£ million)	-5.239 (3.699)	-8.658** (3.491)	-6.438 (3.886)	-6.987** (2.016)	-4.837*** (1.504)	-1.777 (1.300)
Management spend (£ million) squared	0.00000 (0.00000)	0.00000*** (0.00000)	0.00000* (0.00000)	0.00000*** (0.00000)	0.00000*** (0.00000)	0.00000 (0.00000)
Senior doctors (FTE)	-1.782*** (0.169)	-1.704*** (0.157)	-1.481*** (0.159)	-1.625*** (0.089)	-1.764*** (0.110)	-0.432*** (0.070)
NHS staff survey consolidated management score (%)	-1.974 (2.277)	1.427 (2.318)	-0.253 (2.138)	-0.295 (1.237)	-1.435* (0.866)	0.365 (0.772)
Beds (total number)	0.016 (0.062)	-0.012 (0.051)	0.025 (0.046)	0.005 (0.028)	0.034 (0.036)	-0.039** (0.016)
Total Operating Cost (£ million)	0.393*** (0.091)	0.438*** (0.093)	0.286*** (0.100)	0.360*** (0.052)	0.131* (0.067)	0.101*** (0.035)
Total inpatient admissions	0.002*** (0.0003)	0.002*** (0.0003)	0.002*** (0.0002)	0.002*** (0.0001)	0.003*** (0.0002)	0.001*** (0.0001)
Female share of inpatient admissions (%)	-0.221 (1.618)	-0.023 (1.448)	-0.516 (1.451)	-0.202 (0.838)	-2.860** (1.254)	-0.733 (0.509)
Inpatient admissions age 0-14 (%)	-7.482 (6.669)	8.283 (6.875)	3.883 (6.817)	1.273 (3.683)	-1.792 (1.996)	2.061 (2.370)
Inpatient admissions age 15-29 (%)	8.443 (7.143)	24.562*** (7.402)	16.625** (7.442)	16.315*** (3.996)	0.254 (2.434)	4.511* (2.638)
Inpatient admissions age 30-44 (%)	-10.605 (7.064)	2.830 (7.416)	2.320 (7.733)	-2.192 (4.017)	-1.848 (2.633)	1.175 (2.605)
Inpatient admissions age 45-59 (%)	-11.413 (7.294)	5.482 (7.393)	-1.801 (7.382)	-3.006 (3.997)	1.423 (2.196)	2.380 (2.564)
Inpatient admissions age 60-74 (%)	-11.769* (6.983)	4.052 (7.192)	1.691 (7.070)	-2.128 (3.861)	-1.850 (2.283)	0.882 (2.460)
Inpatient admissions age 75-89 (%)	5.099 (7.598)	19.687** (7.632)	13.877* (7.838)	12.523*** (4.159)	1.027 (2.216)	3.740 (2.720)
Inpatient admissions age 90+ (%)	-20.835** (10.211)	-5.028 (10.383)	-7.797 (11.737)	-11.496* (5.934)	-1.984 (3.638)	0.861 (3.826)
Specialist status	-151.678*** (33.204)	-179.579*** (30.664)	-180.631*** (33.625)	-173.595*** (18.081)		-46.694*** (12.243)
Financial Year 2017/18				2.265 (6.771)		
Financial Year 2018/19				4.039 (7.222)		
Lagged Inpatient admissions per senior doctor (excluding A&E)						0.769*** (0.028)
Constant	1.284.484* (710.179)	-482.471 (698.340)	93.502 (707.124)	327.374 (383.306)		-87.326 (243.227)
Observations	151	149	133	433	433	282
R ²	0.880	0.888	0.890	0.882	0.666	0.971
Adjusted R ²	0.866	0.875	0.874	0.877	0.455	0.969
F Statistic	61.474*** (df = 16; 134)	65.522*** (df = 16; 132)	58.477*** (df = 16; 116)	171.875*** (df = 18; 414)	35.213*** (df = 15; 265)	511.939*** (df = 17; 264)

Note:

*p<0.1; **p<0.05; ***p<0.01

Table 7: log Inpatient admissions per senior doctor (excluding A&E) against log Management Spend (£)

	<i>Dependent variable:</i>					
	log Inpatient admissions per senior doctor (excluding A&E)					
	<i>cross-section</i> 2016/17	<i>cross-section</i> 2017/18	<i>cross-section</i> 2018/19	<i>pooled</i> 2016/17-2018/19	<i>fixed effects</i> 2016/17-2018/19	<i>lagged dependent variable</i> 2016/17-2018/19
(1)	(2)	(3)	(4)	(5)	(6)	
log Management spend (£ million)	0.026 (0.033)	0.117*** (0.032)	0.134*** (0.033)	0.081*** (0.018)	0.003 (0.010)	0.046*** (0.011)
log Senior doctors (FTE)	-0.386*** (0.065)	-0.470*** (0.063)	-0.449*** (0.064)	-0.416*** (0.036)	-0.965*** (0.061)	-0.174*** (0.023)
log NHS staff survey consolidated management score (%)	-0.218 (0.348)	-0.447 (0.321)	-0.553* (0.284)	-0.365** (0.179)	-0.122 (0.118)	-0.170* (0.098)
log Beds (total number)	0.111** (0.045)	0.054 (0.036)	0.027 (0.034)	0.055** (0.022)	0.206*** (0.043)	-0.020* (0.011)
Total Operating Cost (£ million)	-0.001*** (0.0001)	-0.001*** (0.0001)	-0.001*** (0.0001)	-0.001*** (0.0001)	-0.0004*** (0.0001)	-0.0002*** (0.00004)
Total inpatient admissions	0.00000*** (0.00000)	0.00000*** (0.00000)	0.00000*** (0.00000)	0.00000*** (0.00000)	0.00001*** (0.00000)	0.00000*** (0.00000)
Female share of inpatient admissions (%)	0.005 (0.004)	-0.0001 (0.003)	-0.0005 (0.003)	0.002 (0.002)	0.007** (0.003)	-0.002* (0.001)
Inpatient admissions age 0-14 (%)	-0.002 (0.015)	0.021 (0.015)	0.016 (0.014)	0.012 (0.008)	-0.003 (0.004)	0.003 (0.005)
Inpatient admissions age 15-29 (%)	0.012 (0.017)	0.043*** (0.016)	0.035** (0.015)	0.029*** (0.009)	-0.020*** (0.005)	0.005 (0.005)
Inpatient admissions age 30-44 (%)	0.001 (0.016)	0.019 (0.016)	0.019 (0.016)	0.013 (0.009)	0.011** (0.006)	0.003 (0.005)
Inpatient admissions age 45-59 (%)	-0.018 (0.016)	0.010 (0.016)	0.001 (0.015)	-0.002 (0.009)	-0.004 (0.005)	-0.001 (0.005)
Inpatient admissions age 60-74 (%)	-0.024 (0.016)	0.009 (0.016)	0.007 (0.015)	-0.004 (0.009)	-0.009* (0.005)	0.003 (0.005)
Inpatient admissions age 75-89 (%)	0.049*** (0.017)	0.049*** (0.017)	0.040** (0.017)	0.048*** (0.009)	0.018*** (0.005)	0.003 (0.006)
Inpatient admissions age 90+ (%)	-0.078*** (0.024)	-0.013 (0.022)	-0.010 (0.025)	-0.037*** (0.013)	-0.010 (0.008)	0.002 (0.008)
Specialist status	-0.422*** (0.096)	-0.608*** (0.082)	-0.672*** (0.088)	-0.564*** (0.050)		-0.247*** (0.030)
Financial Year 2017/18				-0.017 (0.015)		
Financial Year 2018/19				-0.010 (0.016)		
Lagged log Inpatient admissions per senior doctor (excluding A&E)						0.749*** (0.025)
Constant	7.945*** (2.299)	7.456*** (2.073)	8.474*** (1.950)	7.736*** (1.175)		2.962*** (0.667)
Observations	151	149	133	433	433	282
R ²	0.886	0.913	0.922	0.901	0.655	0.981
Adjusted R ²	0.873	0.903	0.912	0.897	0.441	0.980
F Statistic	69.751*** (df = 15; 135)	92.960*** (df = 15; 133)	91.845*** (df = 15; 117)	222.542*** (df = 17; 415)	36.151*** (df = 14; 266)	870.298*** (df = 16; 265)

Note:

*p<0.1; **p<0.05; ***p<0.01

Table 8: Net financial position (£ million) against Management (FTE)

	<i>Dependent variable:</i>								
	Net financial position (£ million)								
	<i>cross-section</i> 2016/17	<i>cross-section</i> 2017/18	<i>cross-section</i> 2018/19	<i>pooled</i> 2016/17-2018/19	<i>fixed effects</i> 2016/17-2018/19	<i>lagged dependent variable</i> 2016/17-2018/19	<i>pooled</i> 2015/13-2018/19	<i>fixed effects</i> 2012/13-2018/19	<i>lagged dependent variable</i> 2012/13-2018/19
(1)	(2)	(3)	(4)	(5)	(6)	(7)	(8)	(9)	
Managers (FTE)	-0.088 (0.059)	-0.005 (0.080)	-0.0005 (0.110)	-0.039 (0.046)	0.029 (0.079)	-0.038 (0.034)			
Managers (FTE) squared	0.0002** (0.0001)	0.0001 (0.0001)	0.0001 (0.0002)	0.0001* (0.0001)	0.0001 (0.0002)	0.0001* (0.0001)			
Managers (FTE - basic definition)							-0.036 (0.032)	0.033 (0.058)	-0.020 (0.028)
Managers (FTE basic definition) squared							0.0002*** (0.0001)	0.0001 (0.0001)	0.0001 (0.0001)
Senior doctors (FTE)	0.022 (0.053)	0.077 (0.067)	0.114 (0.088)	0.068* (0.039)	0.266*** (0.096)	0.001 (0.030)	0.092*** (0.019)	0.100*** (0.036)	0.040** (0.016)
NHS staff survey consolidated management score (%)	4.161*** (0.702)	5.278*** (0.944)	4.700*** (1.146)	4.586*** (0.525)	0.892 (0.748)	1.496*** (0.433)	2.641*** (0.249)	0.447 (0.319)	0.925*** (0.206)
Beds (total number)	-0.009 (0.019)	-0.027 (0.021)	-0.024 (0.025)	-0.019 (0.012)	-0.044 (0.031)	0.003 (0.009)	-0.004 (0.006)	-0.012 (0.009)	-0.0002 (0.005)
Total Operating Cost (£ million)	-0.024 (0.028)	-0.038 (0.038)	-0.083 (0.054)	-0.045** (0.022)	-0.172*** (0.060)	-0.002 (0.017)	-0.060*** (0.011)	-0.117*** (0.024)	-0.030*** (0.009)
Total inpatient admissions	0.00004 (0.0001)	-0.0001 (0.0001)	-0.00003 (0.0001)	-0.00002 (0.0001)	-0.0002* (0.0001)	-0.00005 (0.00005)	-0.00005 (0.00003)	0.0001 (0.0001)	-0.00003 (0.00003)
Female share of inpatient admissions (%)	0.349 (0.407)	-0.595 (0.597)	0.069 (0.787)	-0.022 (0.350)	0.478 (1.084)	-0.080 (0.271)	0.485** (0.197)	0.453* (0.255)	-0.432*** (0.127)
Inpatient admissions age 0-14 (%)	1.174 (2.053)	1.554 (2.824)	2.279 (3.676)	2.211 (1.573)	-1.329 (1.723)	0.039 (1.196)	1.235 (0.797)	0.316 (0.802)	-0.458 (0.698)
Inpatient admissions age 15-29 (%)	0.771 (2.199)	2.226 (3.039)	-0.468 (3.979)	1.563 (1.701)	-0.548 (2.100)	-0.638 (1.292)	0.751 (0.849)	1.114 (1.043)	-0.306 (0.745)
Inpatient admissions age 30-44 (%)	0.140 (2.177)	1.261 (3.054)	3.918 (4.192)	2.166 (1.719)	3.214 (2.274)	0.526 (1.303)	0.616 (0.865)	0.316 (1.004)	-0.142 (0.756)
Inpatient admissions age 45-59 (%)	1.029 (2.247)	0.356 (3.036)	-0.246 (3.963)	0.991 (1.705)	0.219 (1.898)	-0.589 (1.289)	0.736 (0.873)	-0.096 (0.998)	-0.996 (0.766)
Inpatient admissions age 60-74 (%)	1.067 (2.149)	3.353 (2.955)	3.193 (3.808)	3.059* (1.647)	0.929 (1.968)	0.251 (1.257)	1.865** (0.833)	-0.439 (1.015)	0.055 (0.728)
Inpatient admissions age 75-89 (%)	1.263 (2.338)	-0.810 (3.135)	1.111 (4.237)	1.157 (1.778)	0.818 (1.919)	-0.380 (1.345)	0.397 (0.890)	-0.152 (1.002)	-1.022 (0.785)
Inpatient admissions age 90+ (%)	-5.198 (3.148)	2.697 (4.281)	-4.806 (6.313)	-2.092 (2.537)	0.559 (3.147)	-2.316 (1.914)	-0.668 (1.232)	-0.153 (1.569)	-0.908 (1.090)
Specialist status	-21.395** (10.210)	-18.928 (12.714)	-36.430** (18.337)	-25.113*** (7.765)		-12.825** (5.890)	-12.712*** (3.990)		-8.031** (3.528)
Financial Year 2013/14							-6.273*** (2.231)		
Financial Year 2014/15							-10.853*** (2.335)		
Financial Year 2015/16							-27.642*** (2.480)		
Financial Year 2016/17							-16.147*** (2.769)		
Financial Year 2017/18				-3.487 (2.853)			-19.511*** (2.821)		
Financial Year 2018/19				-3.221 (3.039)			-18.556*** (2.924)		
Lagged Net financial position (£ million)						0.787** (0.044)			0.810*** (0.030)
Constant	-350.882 (218.688)	-437.247 (285.552)	-438.735 (380.448)	-456.112*** (163.298)		-64.408 (125.566)	-264.318*** (82.508)		18.834 (72.491)
Observations	151	149	133	433	433	432	1,017	1,017	865
R ²	0.355	0.410	0.309	0.321	0.082	0.613	0.297	0.060	0.578
Adjusted R ²	0.278	0.339	0.213	0.291	-0.496	0.597	0.281	-0.131	0.570
F Statistic	4.604*** (df = 16; 134)	5.745*** (df = 16; 132)	3.237*** (df = 16; 116)	10.874*** (df = 18; 414)	1.578* (df = 15; 265)	38.562*** (df = 17; 414)	19.086*** (df = 22; 994)	3.577*** (df = 15; 845)	68.295*** (df = 17; 847)

Note:

*p<0.1; **p<0.05; ***p<0.01

Table 9: Net financial position (£ million) against Management Spend (£)

	<i>Dependent variable:</i>					
	Net financial position (£ million)					
	<i>cross-section</i> 2016/17	<i>cross-section</i> 2017/18	<i>cross-section</i> 2018/19	<i>pooled</i> 2016/17-2018/19	<i>fixed effects</i> 2016/17-2018/19	<i>lagged dependent variable</i> 2016/17-2018/19
(1)	(2)	(3)	(4)	(5)	(6)	
Management spend (£ million)	-2.854** (1.102)	0.253 (1.437)	-0.367 (2.097)	-0.973 (0.856)	0.451 (1.301)	-1.037 (0.631)
Management spend (£ million) squared	0.00000*** (0.00000)	0.00000 (0.00000)	0.00000 (0.00000)	0.00000** (0.00000)	-0.000 (0.00000)	0.00000** (0.00000)
Senior doctors (FTE)	0.030 (0.050)	0.091 (0.065)	0.125 (0.086)	0.079** (0.038)	0.283*** (0.095)	0.006 (0.029)
NHS staff survey consolidated management score (%)	4.106*** (0.678)	5.206*** (0.954)	4.644*** (1.154)	4.561*** (0.525)	0.919 (0.749)	1.557*** (0.434)
Beds (total number)	-0.0001 (0.018)	-0.023 (0.021)	-0.019 (0.025)	-0.013 (0.012)	-0.047 (0.031)	0.006 (0.009)
Total Operating Cost (£ million)	-0.040 (0.027)	-0.052 (0.038)	-0.096* (0.054)	-0.058*** (0.022)	-0.157*** (0.058)	-0.007 (0.017)
Total inpatient admissions	0.00003 (0.0001)	-0.0001 (0.0001)	-0.00004 (0.0001)	-0.00003 (0.0001)	-0.00002* (0.0001)	-0.00005 (0.00005)
Female share of inpatient admissions (%)	0.331 (0.482)	-0.718 (0.596)	-0.056 (0.783)	-0.115 (0.356)	0.542 (1.085)	-0.130 (0.270)
Inpatient admissions age 0-14 (%)	1.334 (1.986)	1.050 (2.830)	1.561 (3.678)	1.778 (1.564)	-1.307 (1.726)	-0.196 (1.194)
Inpatient admissions age 15-29 (%)	0.748 (2.128)	1.922 (3.046)	-1.034 (4.016)	1.236 (1.697)	-0.475 (2.105)	-0.838 (1.294)
Inpatient admissions age 30-44 (%)	0.409 (2.104)	0.762 (3.052)	3.202 (4.173)	1.750 (1.706)	3.096 (2.278)	0.304 (1.299)
Inpatient admissions age 45-59 (%)	1.126 (2.173)	-0.124 (3.043)	-1.050 (3.984)	0.538 (1.698)	0.173 (1.900)	-0.846 (1.288)
Inpatient admissions age 60-74 (%)	1.238 (2.080)	2.897 (2.960)	2.605 (3.815)	2.666 (1.640)	0.914 (1.975)	0.038 (1.256)
Inpatient admissions age 75-89 (%)	1.342 (2.263)	-1.394 (3.141)	0.224 (4.229)	0.657 (1.767)	1.048 (1.917)	-0.652 (1.342)
Inpatient admissions age 90+ (%)	-4.713 (3.041)	2.429 (4.273)	-5.387 (6.334)	-2.357 (2.521)	0.306 (3.147)	-2.544 (1.910)
Specialist status	-19.485* (9.890)	-18.651 (12.620)	-37.588** (18.144)	-24.391*** (7.680)		-12.665** (5.852)
Financial Year 2017/18				-3.957 (2.876)		
Financial Year 2018/19				-3.344 (3.068)		
Lagged Net financial position (£ million)						0.784*** (0.045)
Constant	-355.567* (211.524)	-380.749 (287.399)	-355.259 (381.573)	-406.548** (162.816)		-40.934 (125.535)
Observations	151	149	133	433	433	432
R ²	0.395	0.413	0.316	0.328	0.078	0.614
Adjusted R ²	0.323	0.342	0.222	0.299	-0.503	0.598
F Statistic	5.474*** (df = 16; 134)	5.803*** (df = 16; 132)	3.354*** (df = 16; 116)	11.249*** (df = 18; 414)	1.490 (df = 15; 265)	38.682*** (df = 17; 414)

Note:

*p<0.1; **p<0.05; ***p<0.01

Table 10: A&E 4 hour wait target met (%) against Management (FTE)

	Dependent variable:								
	A&E 4 hour wait target met (%)								
	cross-section 2016/17	cross-section 2017/18	cross-section 2018/19	pooled 2016/17-2018/19	fixed effects 2016/17-2018/19	logged dependent variable 2016/17-2018/19	pooled 2012/13-2018/19	fixed effects 2012/13-2018/19	logged dependent variable 2012/13-2018/19
(1)	(2)	(3)	(4)	(5)	(6)	(7)	(8)	(9)	
Managers (FTE)	-0.026 (0.021)	-0.040 (0.026)	-0.028 (0.026)	-0.029** (0.013)	0.014 (0.018)	-0.003 (0.008)			
Managers (FTE) squared	0.00003 (0.00003)	0.00004 (0.00004)	0.00002 (0.00004)	0.00002 (0.00002)	-0.00005 (0.00004)	0.00000 (0.00001)			
Managers (FTE - basic definition)							-0.023** (0.010)	0.003 (0.017)	-0.008 (0.009)
Managers (FTE basic definition) squared							0.00004* (0.00002)	-0.00003 (0.00003)	0.00001 (0.00002)
Senior doctors (FTE)	0.026 (0.019)	0.015 (0.021)	0.011 (0.021)	0.018 (0.011)	0.017 (0.021)	0.003 (0.007)	0.021*** (0.006)	0.010 (0.011)	0.007 (0.005)
NHS staff survey consolidated management score (%)	0.549** (0.252)	0.992*** (0.314)	0.941*** (0.269)	0.798*** (0.153)	0.369** (0.175)	0.173* (0.101)	0.400** (0.079)	0.081 (0.093)	0.042 (0.061)
Beds (total number)	-0.011 (0.007)	-0.008 (0.007)	-0.009 (0.006)	-0.009** (0.004)	-0.001 (0.007)	-0.007*** (0.002)	-0.002 (0.002)	-0.002 (0.003)	-0.002 (0.001)
Total Operating Cost (£ million)	-0.007 (0.010)	0.0002 (0.013)	0.003 (0.013)	-0.001 (0.007)	-0.004 (0.013)	0.002 (0.004)	-0.005 (0.004)	-0.021*** (0.007)	-0.003 (0.003)
Total inpatient admissions	0.00003 (0.00004)	-0.00001 (0.00004)	0.00001 (0.00003)	0.00001 (0.00002)	0.00003 (0.00003)	0.00002** (0.00001)	-0.00002** (0.00001)	0.00004** (0.00002)	0.00000 (0.00001)
Female share of inpatient admissions (%)	0.146 (0.203)	0.050 (0.207)	0.355* (0.203)	0.174 (0.113)	0.273 (0.253)	0.105 (0.072)	0.284*** (0.076)	0.089 (0.085)	0.149*** (0.042)
Inpatient admissions age 0-14 (%)	-0.00003 (0.750)	0.491 (0.959)	-0.104 (0.885)	0.279 (0.469)	0.333 (0.401)	0.200 (0.298)	0.295 (0.260)	-0.259 (0.238)	0.215 (0.217)
Inpatient admissions age 15-29 (%)	0.369 (0.822)	0.514 (1.046)	0.091 (0.983)	0.467 (0.519)	0.264 (0.507)	0.123 (0.330)	0.389 (0.284)	0.278 (0.321)	0.121 (0.237)
Inpatient admissions age 30-44 (%)	-0.796 (0.783)	0.159 (1.035)	-0.889 (0.855)	-0.327 (0.513)	0.594 (0.559)	-0.013 (0.326)	-0.192 (0.285)	-0.191 (0.310)	0.027 (0.236)
Inpatient admissions age 45-59 (%)	0.884 (0.869)	0.525 (1.026)	-0.069 (0.965)	0.585 (0.517)	1.015** (0.452)	0.318 (0.327)	0.552* (0.293)	0.265 (0.300)	0.350 (0.244)
Inpatient admissions age 60-74 (%)	-0.767 (0.795)	0.922 (1.001)	0.567 (0.931)	0.313 (0.497)	0.115 (0.458)	0.174 (0.317)	0.372 (0.280)	-0.064 (0.306)	0.263 (0.231)
Inpatient admissions age 75-89 (%)	0.752 (0.904)	-0.038 (1.156)	-1.003 (1.118)	0.193 (0.572)	1.052** (0.472)	0.095 (0.362)	0.330 (0.313)	0.169 (0.313)	0.083 (0.263)
Inpatient admissions age 90+ (%)	-1.516 (1.190)	1.205 (1.366)	2.092 (1.564)	0.359 (0.758)	0.769 (0.712)	0.637 (0.481)	0.080 (0.416)	0.381 (0.473)	0.477 (0.349)
Specialist status	7.594* (4.508)	8.089 (5.172)	7.767 (5.503)	7.683*** (2.826)		2.322 (1.808)	6.794*** (1.602)		2.961** (1.367)
Financial Year 2013/14							-1.082 (0.730)		
Financial Year 2014/15							-4.189*** (0.744)		
Financial Year 2015/16							-6.906*** (0.812)		
Financial Year 2016/17							-8.276*** (0.951)		
Financial Year 2017/18				-0.901 (0.833)			-9.284*** (0.966)		
Financial Year 2018/19				-1.414 (0.871)			-9.610*** (0.980)		
Lagged A&E 4 hour wait target met (%)						0.832*** (0.036)			0.777*** (0.028)
Constant	45.652 (79.755)	-21.324 (95.991)	25.457 (91.173)	4.393 (48.339)		-19.718 (30.777)	27.251 (26.840)		-10.488 (22.429)
Observations	125	124	122	371	371	370	863	863	735
R ²	0.311	0.323	0.318	0.288	0.075	0.714	0.416	0.038	0.657
Adjusted R ²	0.209	0.222	0.214	0.252	-0.495	0.700	0.401	-0.156	0.649
F Statistic	3.049*** (df = 16; 108)	3.189*** (df = 16; 107)	3.059*** (df = 16; 105)	7.908*** (df = 18; 352)	1.237 (df = 15; 229)	51.580*** (df = 17; 352)	27.237*** (df = 22; 840)	1.905** (df = 15; 717)	80.873*** (df = 17; 717)

Note:

*p<0.1; **p<0.05; ***p<0.01

Table 11: log A&E 4 hour wait target met (%) against log Management (FTE)

	<i>Dependent variable:</i>								
	log A&E 4 hour wait target met (%)								
	<i>cross-section</i> 2016/17 (1)	<i>cross-section</i> 2018/18 (2)	<i>cross-section</i> 2018/19 (3)	<i>pooled</i> 2016/17-2018/19 (4)	<i>fixed effects</i> 2016/17-2018/19 (5)	<i>lagged dependent variable</i> 2016/17-2018/19 (6)	<i>pooled</i> 2012/13-2018/19 (7)	<i>fixed effects</i> 2012/13-2018/19 (8)	<i>lagged dependent variable</i> 2012/13-2018/19 (9)
log Managers (FTE)	-0.029* (0.015)	-0.045** (0.022)	-0.042* (0.024)	-0.033*** (0.011)	0.003 (0.013)	-0.001 (0.007)			
log Managers (FTE - basic definition)							-0.017*** (0.006)	-0.006 (0.013)	-0.007 (0.006)
log Senior doctors (FTE)	-0.006 (0.040)	-0.013 (0.050)	-0.008 (0.050)	-0.007 (0.026)	0.115 (0.071)	-0.016 (0.017)	0.023* (0.014)	0.099*** (0.037)	0.0003 (0.012)
log NHS staff survey consolidated management score (%)	0.416** (0.202)	0.903*** (0.260)	0.749*** (0.219)	0.649*** (0.126)	0.284** (0.143)	0.114 (0.083)	0.294*** (0.061)	0.053 (0.071)	0.041 (0.049)
log Beds (total number)	0.001 (0.036)	0.0004 (0.039)	-0.019 (0.036)	-0.006 (0.021)	-0.021 (0.053)	-0.018 (0.013)	0.002 (0.012)	-0.044* (0.025)	-0.002 (0.010)
Total Operating Cost (£ million)	0.00003 (0.0001)	0.0001 (0.0001)	0.0001 (0.0001)	0.0001 (0.00004)	-0.0001 (0.0001)	0.00001 (0.00003)	0.00003 (0.00003)	-0.0002*** (0.0001)	0.00000 (0.00002)
Total inpatient admissions	-0.00000 (0.00000)	-0.00000 (0.00000)	-0.00000 (0.00000)	-0.00000 (0.00000)	0.00000 (0.00000)	0.00000 (0.00000)	-0.00000*** (0.00000)	0.00000* (0.00000)	-0.00000 (0.00000)
Female share of inpatient admissions (%)	0.0003 (0.002)	-0.00000 (0.002)	0.004 (0.003)	0.001 (0.001)	0.002 (0.003)	0.001 (0.001)	0.003*** (0.001)	0.001 (0.001)	0.002*** (0.001)
Inpatient admissions age 0-14 (%)	-0.006 (0.009)	0.003 (0.012)	-0.003 (0.011)	0.0002 (0.006)	0.004 (0.005)	0.001 (0.004)	0.003 (0.003)	-0.003 (0.003)	0.002 (0.003)
Inpatient admissions age 15-29 (%)	-0.003 (0.010)	0.002 (0.014)	-0.001 (0.013)	0.001 (0.007)	0.006 (0.007)	-0.001 (0.004)	0.004 (0.004)	0.003 (0.004)	0.001 (0.003)
Inpatient admissions age 30-44 (%)	-0.013 (0.009)	0.0004 (0.013)	-0.013 (0.013)	-0.006 (0.006)	0.006 (0.007)	-0.001 (0.004)	-0.003 (0.004)	-0.002 (0.004)	0.0004 (0.003)
Inpatient admissions age 45-59 (%)	0.001 (0.010)	0.002 (0.013)	-0.004 (0.012)	0.002 (0.006)	0.014** (0.006)	0.001 (0.004)	0.005 (0.004)	0.003 (0.004)	0.004 (0.003)
Inpatient admissions age 60-74 (%)	-0.013 (0.010)	0.011 (0.013)	0.006 (0.012)	0.002 (0.006)	0.001 (0.006)	0.001 (0.004)	0.005 (0.004)	-0.002 (0.004)	0.003 (0.003)
Inpatient admissions age 75-89 (%)	0.001 (0.010)	-0.007 (0.015)	-0.017 (0.014)	-0.003 (0.007)	0.012** (0.006)	-0.002 (0.004)	0.003 (0.004)	0.002 (0.004)	0.0004 (0.003)
Inpatient admissions age 90+ (%)	-0.024 (0.015)	0.017 (0.017)	0.026 (0.020)	0.003 (0.010)	0.010 (0.009)	0.008 (0.006)	0.001 (0.005)	0.004 (0.006)	0.006 (0.004)
Specialist status	0.111 (0.093)	0.095 (0.106)	0.046 (0.114)	0.082 (0.058)		-0.003 (0.037)	0.087*** (0.032)		0.033 (0.028)
Financial Year 2013/14							-0.013 (0.009)		
Financial Year 2014/15							-0.047*** (0.009)		
Financial Year 2015/16							-0.078*** (0.010)		
Financial Year 2016/17							-0.094*** (0.012)		
Financial Year 2017/18				-0.010 (0.010)			-0.106*** (0.012)		
Financial Year 2018/19				-0.012 (0.011)			-0.110*** (0.012)		
Lagged log A&E 4 hour wait target met (%)									0.770*** (0.029)
Constant	3.482*** (1.319)	0.705 (1.638)	1.900 (1.523)	1.944** (0.818)			0.262 (0.524)	2.857*** (0.434)	0.581 (0.382)
Observations	125	124	122	371	371	370	863	863	735
R ²	0.255	0.285	0.290	0.244	0.074	0.697	0.376	0.039	0.624
Adjusted R ²	0.152	0.186	0.190	0.207	-0.490	0.683	0.360	-0.153	0.616
F Statistic	2.481*** (df = 15; 109)	2.874*** (df = 15; 108)	2.888*** (df = 15; 106)	6.689*** (df = 17; 353)	1.310 (df = 14; 230)	50.804*** (df = 16; 353)	24.096*** (df = 21; 841)	2.096** (df = 14; 718)	74.614*** (df = 16; 718)

Note:

*p<0.1; **p<0.05; ***p<0.01

Table 12: A&E 4 hour wait target met (%) against Management Spend (£)

	<i>Dependent variable:</i>					
	A&E 4 hour wait target met (%)					
	<i>cross-section</i> 2016/17	<i>cross-section</i> 2017/18	<i>cross-section</i> 2018/19	<i>pooled</i> 2016/17-2018/19	<i>fixed effects</i> 2016/17-2018/19	<i>lagged dependent variable</i> 2016/17-2018/19
(1)	(2)	(3)	(4)	(5)	(6)	
Management spend (£ million)	-0.723* (0.421)	-0.914* (0.499)	-0.711 (0.505)	-0.706*** (0.255)	-0.194 (0.299)	-0.127 (0.160)
Management spend (£ million) squared	0.0000 (0.000)	0.0000 (0.000)	0.000 (0.000)	0.000** (0.000)	0.000 (0.000)	0.000 (0.000)
Senior doctors (FTE)	0.025 (0.018)	0.015 (0.021)	0.010 (0.020)	0.017 (0.011)	0.013 (0.021)	0.002 (0.007)
NHS staff survey consolidated management score (%)	0.547** (0.249)	1.017*** (0.320)	0.967*** (0.273)	0.806*** (0.154)	0.364** (0.176)	0.176* (0.102)
Beds (total number)	-0.011 (0.007)	-0.008 (0.007)	-0.009 (0.006)	-0.009** (0.004)	-0.0004 (0.007)	-0.007*** (0.002)
Total Operating Cost (£ million)	-0.006 (0.010)	0.0003 (0.012)	0.003 (0.013)	-0.001 (0.007)	-0.010 (0.013)	0.002 (0.004)
Total inpatient admissions	0.00003 (0.00004)	-0.00000 (0.00004)	0.00002 (0.00003)	0.00001 (0.00002)	0.00004 (0.00003)	0.00003** (0.00001)
Female share of inpatient admissions (%)	0.131 (0.202)	0.082 (0.205)	0.368* (0.203)	0.187* (0.113)	0.272 (0.253)	0.107 (0.071)
Inpatient admissions age 0-14 (%)	-0.037 (0.744)	0.573 (0.962)	-0.113 (0.888)	0.311 (0.468)	0.348 (0.401)	0.207 (0.298)
Inpatient admissions age 15-29 (%)	0.303 (0.815)	0.543 (1.049)	-0.007 (0.994)	0.444 (0.520)	0.389 (0.509)	0.114 (0.330)
Inpatient admissions age 30-44 (%)	-0.791 (0.776)	0.248 (1.039)	-0.837 (1.017)	-0.264 (0.512)	0.635 (0.558)	0.001 (0.325)
Inpatient admissions age 45-59 (%)	0.824 (0.861)	0.628 (1.029)	-0.093 (0.971)	0.610 (0.516)	1.080** (0.450)	0.322 (0.327)
Inpatient admissions age 60-74 (%)	-0.829 (0.792)	0.957 (1.010)	0.528 (0.937)	0.306 (0.499)	0.048 (0.459)	0.171 (0.318)
Inpatient admissions age 75-89 (%)	0.728 (0.895)	0.112 (1.155)	-0.945 (1.117)	0.279 (0.569)	0.974** (0.469)	0.114 (0.360)
Inpatient admissions age 90+ (%)	-1.619 (1.182)	1.204 (1.375)	1.967 (1.582)	0.296 (0.762)	0.865 (0.711)	0.612 (0.483)
Specialist status	7.188 (4.486)	8.902* (5.221)	8.817 (5.550)	8.079*** (2.831)		2.390 (1.813)
Financial Year 2017/18				-0.626 (0.846)		
Financial Year 2018/19				-1.169 (0.884)		
Lagged A&E 4 hour wait target met (%)						0.831*** (0.036)
Constant	51.909 (79.169)	-31.656 (96.801)	25.171 (91.707)	1.127 (48.390)		-20.119 (30.806)
Observations	125	124	122	371	371	370
R ²	0.320	0.320	0.318	0.288	0.072	0.714
Adjusted R ²	0.220	0.219	0.214	0.252	-0.499	0.700
F Statistic	3.181*** (df = 16; 108)	3.152*** (df = 16; 107)	3.057*** (df = 16; 105)	7.920*** (df = 18; 352)	1.192 (df = 15; 229)	51.610*** (df = 17; 352)

Note:

*p<0.1; **p<0.05; ***p<0.01

Table 13: log A&E 4 hour wait target met (%) against log Management Spend (£)

	<i>Dependent variable:</i>					
	log A&E 4 hour wait target met (%)					
	<i>cross-section</i> 2016/17	<i>cross-section</i> 2017/18	<i>cross-section</i> 2018/19	<i>pooled</i> 2016/17-2018/19	<i>fixed effects</i> 2016/17-2018/19	<i>lagged dependent variable</i> 2016/17-2018/19
(1)	(2)	(3)	(4)	(5)	(6)	
log Management spend (£ million)	-0.038** (0.019)	-0.042* (0.025)	-0.043* (0.026)	-0.035*** (0.012)	-0.0003 (0.011)	-0.001 (0.008)
log Senior doctors (FTE)	-0.005 (0.040)	-0.012 (0.051)	-0.004 (0.051)	-0.005 (0.026)	0.116 (0.071)	-0.016 (0.017)
log NHS staff survey consolidated management score (%)	0.424** (0.201)	0.884*** (0.262)	0.747*** (0.220)	0.645*** (0.126)	0.285** (0.143)	0.113 (0.083)
log Beds (total number)	0.009 (0.037)	-0.007 (0.038)	-0.025 (0.036)	-0.009 (0.020)	-0.021 (0.053)	-0.018 (0.013)
Total Operating Cost (£ million)	0.00004 (0.0001)	0.0001 (0.0001)	0.0001 (0.0001)	0.0001 (0.00004)	-0.0001 (0.0001)	0.00001 (0.00003)
Total inpatient admissions	-0.00000 (0.00000)	-0.00000 (0.00000)	-0.000 (0.00000)	-0.00000 (0.00000)	0.00000 (0.00000)	0.00000 (0.00000)
Female share of inpatient admissions (%)	0.0001 (0.002)	0.0003 (0.003)	0.004* (0.003)	0.002 (0.001)	0.002 (0.003)	0.001 (0.001)
Inpatient admissions age 0-14 (%)	-0.007 (0.009)	0.004 (0.012)	-0.003 (0.011)	0.001 (0.006)	0.004 (0.005)	0.001 (0.004)
Inpatient admissions age 15-29 (%)	-0.004 (0.010)	0.003 (0.014)	-0.001 (0.013)	0.002 (0.007)	0.006 (0.007)	-0.001 (0.004)
Inpatient admissions age 30-44 (%)	-0.013 (0.009)	0.001 (0.013)	-0.012 (0.013)	-0.005 (0.006)	0.006 (0.007)	-0.001 (0.004)
Inpatient admissions age 45-59 (%)	0.001 (0.010)	0.003 (0.013)	-0.004 (0.012)	0.003 (0.006)	0.014** (0.006)	0.001 (0.004)
Inpatient admissions age 60-74 (%)	-0.013 (0.010)	0.012 (0.013)	0.006 (0.012)	0.003 (0.006)	0.001 (0.006)	0.001 (0.004)
Inpatient admissions age 75-89 (%)	0.0001 (0.010)	-0.006 (0.015)	-0.016 (0.014)	-0.002 (0.007)	0.012** (0.006)	-0.002 (0.004)
Inpatient admissions age 90+ (%)	-0.025* (0.015)	0.019 (0.017)	0.027 (0.020)	0.004 (0.010)	0.010 (0.009)	0.008 (0.006)
Specialist status	0.120 (0.093)	0.092 (0.106)	0.046 (0.114)	0.082 (0.058)		-0.003 (0.037)
Financial Year 2017/18				-0.007 (0.011)		
Financial Year 2018/19				-0.010 (0.011)		
Lagged log A&E 4 hour wait target met (%)						0.861*** (0.037)
Constant	3.398** (1.312)	0.585 (1.692)	1.749 (1.549)	1.806** (0.827)		0.259 (0.528)
Observations	125	124	122	371	371	370
R ²	0.263	0.278	0.288	0.242	0.074	0.697
Adjusted R ²	0.162	0.178	0.187	0.206	-0.490	0.683
F Statistic	2.594*** (df = 15; 109)	2.778*** (df = 15; 108)	2.857*** (df = 15; 106)	6.638*** (df = 17; 353)	1.307 (df = 14; 230)	50.802*** (df = 16; 353)

Note:

*p<0.1; **p<0.05; ***p<0.01

Table 14: Referral to treatment in 18 weeks (%) against Management (FTE)

	Dependent variable:								
	Referral to treatment in 18 weeks (%)								
	cross-section 2016/17 (1)	cross-section 2017/18 (2)	cross-section 2018/19 (3)	cross-section 2016/17-2018/19 (4)	fixed effects 2016/17-2018/19 (5)	lagged dependent variable 2016/17-2018/19 (6)	cross-section 2015/17-2018/19 (7)	fixed effects 2012/13-2018/19 (8)	lagged dependent variable 2012/13-2018/19 (9)
Managers (FTE)	-0.024* (0.013)	-0.026 (0.017)	-0.028 (0.018)	-0.024*** (0.009)	0.030** (0.015)	-0.013* (0.007)			
Managers (FTE) squared	0.00004* (0.00002)	0.00003 (0.00003)	0.00004 (0.00003)	0.00003*** (0.00001)	-0.00004 (0.00003)	0.00002 (0.00001)			
Managers (FTE - basic definition)							-0.016** (0.006)	0.027** (0.012)	-0.011* (0.006)
Managers (FTE basic definition) squared							0.00004*** (0.00001)	-0.00003 (0.00002)	0.00003** (0.00001)
Senior doctors (FTE)	-0.018 (0.013)	-0.025* (0.014)	-0.033** (0.014)	-0.023*** (0.008)	-0.009 (0.018)	-0.010* (0.006)	-0.007* (0.004)	0.005 (0.008)	-0.004 (0.003)
NHS staff survey consolidated management score (%)	0.542*** (0.159)	1.001*** (0.197)	0.559*** (0.181)	0.641*** (0.100)	0.101 (0.139)	0.180** (0.079)	0.409*** (0.050)	-0.003 (0.067)	0.071* (0.042)
Beds (total number)	0.007* (0.004)	0.008* (0.004)	0.002 (0.004)	0.005** (0.002)	0.004 (0.006)	0.001 (0.002)	0.003*** (0.001)	-0.002 (0.002)	0.002** (0.001)
Total Operating Cost (£ million)	0.005 (0.007)	0.013 (0.008)	0.014 (0.009)	0.009** (0.004)	0.004 (0.011)	0.005 (0.003)	0.0003 (0.002)	-0.009* (0.005)	0.0001 (0.002)
Total inpatient admissions	-0.00002 (0.00002)	-0.00004* (0.00002)	0.00000 (0.00002)	-0.00001 (0.00001)	0.00001 (0.00003)	-0.00000 (0.00001)	-0.00001 (0.00001)	0.00001 (0.00001)	-0.00001 (0.00001)
Female share of inpatient admissions (%)	-0.054 (0.116)	-0.032 (0.126)	-0.062 (0.069)	-0.038 (0.124)	-0.119 (0.203)	-0.075 (0.052)	0.101*** (0.039)	0.073 (0.053)	0.122*** (0.027)
Inpatient admissions age 0-14 (%)	0.106 (0.466)	0.913 (0.585)	-0.244 (0.581)	0.244 (0.298)	-0.654** (0.322)	0.204 (0.225)	0.054 (0.160)	-0.280* (0.167)	0.213 (0.145)
Inpatient admissions age 15-29 (%)	-0.098 (0.497)	0.444 (0.628)	-1.313** (0.631)	-0.310 (0.322)	-0.351 (0.396)	-0.034 (0.242)	-0.137 (0.171)	0.052 (0.217)	-0.016 (0.154)
Inpatient admissions age 30-44 (%)	0.343 (0.491)	1.097* (0.630)	0.449 (0.661)	0.596* (0.325)	0.324 (0.421)	0.394 (0.244)	0.032 (0.174)	-0.389* (0.209)	0.232 (0.157)
Inpatient admissions age 45-59 (%)	0.015 (0.512)	0.702 (0.634)	-0.741 (0.629)	-0.002 (0.324)	-0.208 (0.343)	0.085 (0.243)	0.019 (0.176)	-0.425** (0.210)	0.163 (0.159)
Inpatient admissions age 60-74 (%)	-0.019 (0.487)	0.873 (0.608)	-0.300 (0.601)	0.188 (0.312)	0.084 (0.367)	0.241 (0.236)	0.060 (0.168)	-0.131 (0.212)	0.237 (0.151)
Inpatient admissions age 75-89 (%)	0.300 (0.528)	0.778 (0.647)	-0.156 (0.671)	0.275 (0.337)	0.190 (0.363)	0.083 (0.253)	-0.002 (0.179)	-0.267 (0.210)	0.152 (0.162)
Inpatient admissions age 90+ (%)	-0.827 (0.715)	0.105 (0.879)	-2.670*** (0.995)	-1.047** (0.481)	-0.685 (0.603)	-0.160 (0.361)	-0.476* (0.246)	-0.784** (0.329)	-0.117 (0.224)
Specialist status	1.857 (2.322)	-1.963 (2.620)	-2.451 (2.889)	-0.700 (1.476)		-0.872 (1.099)	-1.686** (0.799)		-0.516 (0.727)
Financial Year 2013/14							-0.615 (0.446)		
Financial Year 2014/15							-1.333*** (0.469)		
Financial Year 2015/16							-3.667*** (0.498)		
Financial Year 2016/17							-4.106*** (0.551)		
Financial Year 2017/18				-2.869*** (0.545)			-7.076*** (0.563)		
Financial Year 2018/19				-3.203*** (0.576)			-7.283*** (0.582)		
Lagged Referral to treatment in 18 weeks (%)						0.752** (0.040)			0.735*** (0.029)
Constant	52.583 (49.755)	-50.508 (58.995)	101.660* (60.006)	40.408 (30.930)		-0.673 (23.564)	66.336*** (16.602)		-2.738 (15.070)
Observations	148	143	131	422	422	410	986	986	816
R ²	0.207	0.332	0.324	0.313	0.066	0.609	0.408	0.032	0.594
Adjusted R ²	0.111	0.248	0.229	0.282	-0.548	0.592	0.395	-0.171	0.586
F Statistic	2.144*** (df = 16; 131)	3.920*** (df = 16; 126)	3.409*** (df = 16; 114)	10.203*** (df = 18; 403)	1.199 (df = 15; 254)	35.871*** (df = 17; 392)	30.196*** (df = 22; 963)	1.800** (df = 15; 814)	68.777*** (df = 17; 798)

Note:

*p<0.1; **p<0.05; ***p<0.01

Table 15: log Referral to treatment in 18 weeks (%) against log Management (FTE)

	<i>Dependent variable:</i>								
	log Referral to treatment in 18 weeks (%)								
	<i>cross-section</i> 2016/17 (1)	<i>cross-section</i> 2017/18 (2)	<i>cross-section</i> 2018/19 (3)	<i>pooled</i> 2016/17-2018/19 (4)	<i>fixed effects</i> 2016/17-2018/19 (5)	<i>lagged dependent variable</i> 2016/17-2018/19 (6)	<i>pooled</i> 2012/13-2018/19 (7)	<i>fixed effects</i> 2012/13-2018/19 (8)	<i>lagged dependent variable</i> 2012/13-2018/19 (9)
log Managers (FTE)	-0.003 (0.010)	-0.016 (0.014)	-0.002 (0.015)	-0.007 (0.007)	0.019* (0.010)	-0.006 (0.005)			
log Managers (FTE - basic definition)							-0.004 (0.004)	0.014 (0.008)	-0.003 (0.003)
log Senior doctors (FTE)	-0.031 (0.023)	-0.043 (0.030)	-0.069** (0.030)	-0.044*** (0.016)	-0.057 (0.055)	-0.021* (0.012)	-0.016** (0.008)	0.029 (0.024)	-0.013* (0.007)
log NHS staff survey consolidated management score (%)	0.440*** (0.121)	0.793*** (0.152)	0.393*** (0.135)	0.502*** (0.076)	0.086 (0.107)	0.143** (0.061)	0.281*** (0.036)	-0.012 (0.048)	0.049 (0.031)
log Beds (total number)	0.002 (0.015)	0.004 (0.017)	0.007 (0.016)	0.004 (0.009)	0.071* (0.038)	0.0003 (0.007)	0.001 (0.005)	-0.001 (0.017)	0.002 (0.004)
Total Operating Cost (£ million)	0.00001 (0.00004)	0.0001 (0.0001)	0.00002 (0.00002)	0.00003 (0.00003)	0.00004 (0.00004)	0.00001 (0.00002)	-0.00000 (0.00002)	-0.0001* (0.00004)	0.00000 (0.00001)
Total inpatient admissions	0.00000 (0.00000)	-0.00000 (0.00000)	0.00000 (0.00000)	0.00000 (0.00000)	0.00000 (0.00000)	0.00000 (0.00000)	0.00000 (0.00000)	0.00000 (0.00000)	0.00000 (0.00000)
Female share of inpatient admissions (%)	-0.0003 (0.001)	0.0001 (0.001)	-0.001 (0.001)	-0.0002 (0.001)	-0.001 (0.002)	-0.001 (0.001)	0.001*** (0.0005)	0.001 (0.001)	0.001*** (0.0003)
Inpatient admissions age 0-14 (%)	0.003 (0.005)	0.009 (0.007)	-0.003 (0.003)	0.003 (0.003)	-0.007* (0.004)	0.003 (0.003)	0.001 (0.002)	-0.003* (0.002)	0.003 (0.002)
Inpatient admissions age 15-29 (%)	0.0004 (0.006)	0.002 (0.008)	-0.017** (0.007)	-0.004 (0.004)	-0.005 (0.005)	-0.0004 (0.003)	-0.001 (0.002)	0.001 (0.003)	-0.0001 (0.002)
Inpatient admissions age 30-44 (%)	0.004 (0.006)	0.010 (0.007)	0.006 (0.008)	0.007* (0.004)	0.005 (0.005)	0.005* (0.003)	0.001 (0.002)	-0.004* (0.002)	0.003 (0.002)
Inpatient admissions age 45-59 (%)	0.003 (0.006)	0.007 (0.004)	-0.008 (0.007)	0.001 (0.004)	-0.002 (0.004)	0.002 (0.003)	0.001 (0.002)	-0.005** (0.002)	0.002 (0.002)
Inpatient admissions age 60-74 (%)	0.0003 (0.006)	0.007 (0.007)	-0.004 (0.007)	0.002 (0.004)	0.001 (0.004)	0.003 (0.003)	0.001 (0.002)	-0.002 (0.002)	0.003 (0.002)
Inpatient admissions age 75-89 (%)	0.005 (0.006)	0.007 (0.008)	-0.002 (0.008)	0.004 (0.004)	0.002 (0.004)	0.001 (0.003)	0.0005 (0.002)	-0.003 (0.002)	0.002 (0.002)
Inpatient admissions age 90+ (%)	-0.009 (0.008)	-0.002 (0.010)	-0.032*** (0.012)	-0.013** (0.006)	-0.008 (0.007)	-0.002 (0.004)	-0.006** (0.003)	-0.010*** (0.004)	-0.002 (0.003)
Specialist status	0.007 (0.033)	-0.042 (0.039)	-0.043 (0.042)	-0.023 (0.021)		-0.018 (0.016)	-0.028** (0.011)		-0.011 (0.010)
Financial Year 2013/14							-0.007 (0.005)		
Financial Year 2014/15							-0.016*** (0.005)		
Financial Year 2015/16							-0.042*** (0.006)		
Financial Year 2016/17							-0.047*** (0.006)		
Financial Year 2017/18				-0.035*** (0.006)			-0.081*** (0.006)		
Financial Year 2018/19				-0.041*** (0.007)			-0.086*** (0.007)		
Lagged log Referral to treatment in 18 weeks (%)						0.751*** (0.041)			0.744*** (0.029)
Constant	2.601*** (0.794)	0.734 (0.947)	3.690*** (0.912)	2.447*** (0.493)		0.468 (0.392)	3.391*** (0.250)		0.717*** (0.249)
Observations	148	143	131	422	422	410	986	986	816
R ²	0.178	0.321	0.316	0.300	0.070	0.591	0.391	0.029	0.582
Adjusted R ²	0.085	0.240	0.227	0.270	-0.535	0.575	0.377	-0.174	0.573
F Statistic	1.910** (df = 15; 132)	3.996*** (df = 15; 127)	3.543*** (df = 15; 115)	10.167*** (df = 17; 404)	1.378 (df = 14; 255)	35.527*** (df = 16; 393)	29.440*** (df = 21; 964)	1.738** (df = 14; 815)	69.474*** (df = 16; 799)

Note:

*p<0.1; **p<0.05; ***p<0.01

Table 16: Referral to treatment in 18 weeks (%) against Management Spend (£)

	<i>Dependent variable:</i>					
	Referral to treatment in 18 weeks (%)					
	<i>cross-section 2016/17</i>	<i>cross-section 2017/18</i>	<i>cross-section 2018/19</i>	<i>pooled 2016/17-2018/19</i>	<i>fixed effects 2016/17-2018/19</i>	<i>lagged dependent variable 2016/17-2018/19</i>
(1)	(2)	(3)	(4)	(5)	(6)	
Management spend (£ million)	-0.392 (0.261)	-0.169 (0.299)	-0.187 (0.335)	-0.197 (0.165)	0.499** (0.240)	-0.179 (0.120)
Management spend (£ million) squared	0.000 (0.000)	0.000 (0.000)	0.000 (0.000)	0.000 (0.000)	-0.000 (0.000)	0.000 (0.000)
Senior doctors (FTE)	-0.015 (0.013)	-0.021 (0.014)	-0.026* (0.014)	-0.019** (0.008)	-0.007 (0.018)	-0.009 (0.006)
NHS staff survey consolidated management score (%)	0.554*** (0.159)	0.987*** (0.202)	0.516*** (0.185)	0.630*** (0.101)	0.118 (0.139)	0.178** (0.080)
Beds (total number)	0.007* (0.004)	0.008* (0.004)	0.002 (0.004)	0.005** (0.002)	0.004 (0.006)	0.001 (0.002)
Total Operating Cost (£ million)	0.003 (0.007)	0.010 (0.009)	0.009 (0.009)	0.007 (0.005)	0.005 (0.011)	0.004 (0.003)
Total inpatient admissions	-0.00002 (0.00002)	-0.00004* (0.00002)	-0.00000 (0.00002)	-0.00002 (0.00001)	0.00001 (0.00003)	-0.00000 (0.00001)
Female share of inpatient admissions (%)	-0.053 (0.117)	-0.027 (0.127)	-0.067 (0.126)	-0.035 (0.069)	-0.111 (0.202)	-0.072 (0.052)
Inpatient admissions age 0-14 (%)	0.117 (0.468)	0.873 (0.591)	-0.251 (0.589)	0.239 (0.300)	-0.644** (0.321)	0.211 (0.225)
Inpatient admissions age 15-29 (%)	-0.071 (0.499)	0.443 (0.636)	-1.267* (0.645)	-0.281 (0.325)	-0.370 (0.395)	-0.021 (0.243)
Inpatient admissions age 30-44 (%)	0.340 (0.492)	1.042 (0.636)	0.437 (0.667)	0.578* (0.326)	0.312 (0.420)	0.399 (0.243)
Inpatient admissions age 45-59 (%)	0.040 (0.514)	0.689 (0.642)	-0.724 (0.640)	0.013 (0.327)	-0.173 (0.354)	0.097 (0.244)
Inpatient admissions age 60-74 (%)	-0.010 (0.490)	0.821 (0.615)	-0.309 (0.610)	0.175 (0.314)	0.083 (0.366)	0.242 (0.236)
Inpatient admissions age 75-89 (%)	0.306 (0.530)	0.764 (0.655)	-0.143 (0.678)	0.289 (0.339)	0.210 (0.361)	0.101 (0.252)
Inpatient admissions age 90+ (%)	-0.751 (0.718)	0.166 (0.887)	-2.629** (1.013)	-0.989** (0.484)	-0.708 (0.601)	-0.130 (0.361)
Specialist status	2.017 (2.331)	-1.486 (2.633)	-2.198 (2.907)	-0.360 (1.479)		-0.680 (1.096)
Financial Year 2017/18				-2.958*** (0.557)		
Financial Year 2018/19				-3.295*** (0.589)		
Lagged Referral to treatment in 18 weeks (%)						0.758*** (0.040)
Constant	50.214 (49.977)	-48.348 (59.951)	102.706* (61.000)	39.723 (31.188)		-2.363 (23.614)
Observations	148	143	131	422	422	410
R ²	0.201	0.320	0.311	0.303	0.070	0.607
Adjusted R ²	0.103	0.233	0.214	0.272	-0.542	0.590
F Statistic	2.055** (df = 16; 131)	3.703*** (df = 16; 126)	3.214*** (df = 16; 114)	9.749*** (df = 18; 403)	1.273 (df = 15; 254)	35.621*** (df = 17; 392)

Note:

*p<0.1; **p<0.05; ***p<0.01

Table 17: log Referral to treatment in 18 weeks (%) against log Management Spend (£)

	<i>Dependent variable:</i>					
	log Referral to treatment in 18 weeks (%)					
	<i>cross-section</i> 2016/17	<i>cross-section</i> 2017/18	<i>cross-section</i> 2018/19	<i>pooled</i> 2016/17-2018/19	<i>fixed effects</i> 2016/17-2018/19	<i>lagged dependent variable</i> 2016/17-2018/19
(1)	(2)	(3)	(4)	(5)	(6)	
log Management spend (£ million)	-0.003 (0.012)	-0.006 (0.015)	0.013 (0.016)	-0.0002 (0.008)	0.019** (0.009)	-0.005 (0.006)
log Senior doctors (FTE)	-0.031 (0.023)	-0.049 (0.031)	-0.079** (0.030)	-0.047*** (0.016)	-0.057 (0.055)	-0.021* (0.012)
log NHS staff survey consolidated management score (%)	0.440*** (0.121)	0.774*** (0.154)	0.359*** (0.135)	0.489*** (0.076)	0.093 (0.106)	0.142** (0.061)
log Beds (total number)	0.003 (0.016)	0.003 (0.017)	0.007 (0.016)	0.003 (0.009)	0.075* (0.038)	-0.001 (0.007)
Total Operating Cost (£ million)	0.00001 (0.00004)	0.0001 (0.0001)	0.00002 (0.0001)	0.00003 (0.00003)	0.00004 (0.0001)	0.00001 (0.00002)
Total inpatient admissions	0.00000 (0.00000)	-0.00000 (0.00000)	0.00000 (0.00000)	0.00000 (0.00000)	0.00000 (0.00000)	0.00000 (0.00000)
Female share of inpatient admissions (%)	-0.0003 (0.001)	0.0001 (0.001)	-0.001 (0.001)	-0.0002 (0.001)	-0.001 (0.002)	-0.001 (0.001)
Inpatient admissions age 0-14 (%)	0.003 (0.005)	0.008 (0.007)	-0.003 (0.007)	0.004 (0.003)	-0.007* (0.004)	0.003 (0.003)
Inpatient admissions age 15-29 (%)	0.0004 (0.006)	0.002 (0.008)	-0.016** (0.007)	-0.004 (0.004)	-0.005 (0.005)	-0.0004 (0.003)
Inpatient admissions age 30-44 (%)	0.004 (0.006)	0.009 (0.008)	0.005 (0.008)	0.007* (0.004)	0.004 (0.005)	0.005* (0.003)
Inpatient admissions age 45-59 (%)	0.003 (0.006)	0.007 (0.008)	-0.008 (0.007)	0.002 (0.004)	-0.002 (0.004)	0.002 (0.003)
Inpatient admissions age 60-74 (%)	0.0003 (0.006)	0.007 (0.007)	-0.004 (0.007)	0.002 (0.004)	0.001 (0.004)	0.003 (0.003)
Inpatient admissions age 75-89 (%)	0.005 (0.006)	0.007 (0.008)	-0.002 (0.008)	0.004 (0.004)	0.002 (0.004)	0.001 (0.003)
Inpatient admissions age 90+ (%)	-0.009 (0.008)	-0.001 (0.010)	-0.031*** (0.012)	-0.012** (0.006)	-0.008 (0.007)	-0.002 (0.004)
Specialist status	0.007 (0.033)	-0.040 (0.039)	-0.043 (0.042)	-0.022 (0.021)		-0.018 (0.016)
Financial Year 2017/18				-0.035*** (0.007)		
Financial Year 2018/19				-0.042*** (0.007)		
Lagged log Referral to treatment in 18 weeks (%)						0.752*** (0.041)
Constant	2.591*** (0.794)	0.833 (0.973)	3.858*** (0.922)	2.486*** (0.498)		0.445 (0.394)
Observations	148	143	131	422	422	410
R ²	0.178	0.314	0.320	0.298	0.076	0.591
Adjusted R ²	0.085	0.233	0.231	0.268	-0.526	0.574
F Statistic	1.911** (df = 15; 132)	3.880*** (df = 15; 127)	3.603*** (df = 15; 115)	10.080*** (df = 17; 404)	1.493 (df = 14; 255)	35.478*** (df = 16; 393)

Note:

*p<0.1; **p<0.05; ***p<0.01

Table 18: Summary Hospital-level Mortality Indicator against Management (FTE)

	<i>Dependent variable:</i>								
	Summary Hospital-level Mortality Indicator								
	<i>cross-section</i> 2016/17	<i>cross-section</i> 2017/18	<i>cross-section</i> 2018/19	<i>pooled</i> 2016/17-2018/19	<i>fixed effects</i> 2016/17-2018/19	<i>lagged dependent variable</i> 2016/17-2018/19	<i>pooled</i> 2012/13-2018/19	<i>fixed effects</i> 2012/13-2018/19	<i>lagged dependent variable</i> 2012/13-2018/19
(1)	(2)	(3)	(4)	(5)	(6)	(7)	(8)	(9)	
Managers (FTE)	-0.0004* (0.0002)	-0.0002 (0.0003)	0.0002 (0.0003)	-0.0001 (0.0001)	-0.0001 (0.0002)	0.0001 (0.0001)			
Managers (FTE) squared	0.00000 (0.00000)	0.00000 (0.00000)	-0.00000 (0.00000)	0.00000 (0.00000)	-0.00000 (0.00000)	-0.00000 (0.00000)			
Managers (FTE - basic definition)							-0.0002 (0.0001)	-0.0001 (0.0002)	-0.00004 (0.0001)
Managers (FTE basic definition) squared							0.00000 (0.00000)	0.00000 (0.00000)	0.000 (0.00000)
Senior doctors (FTE)	-0.0002 (0.0002)	-0.0002 (0.0002)	-0.0001 (0.0002)	-0.0002 (0.0001)	0.001** (0.0002)	-0.00001 (0.0001)	-0.0001 (0.0001)	0.0002 (0.0001)	-0.0001 (0.0001)
NHS staff survey consolidated management score (%)	-0.001 (0.003)	-0.003 (0.003)	-0.002 (0.003)	-0.001 (0.002)	0.003 (0.002)	0.0002 (0.001)	-0.001 (0.001)	0.0001 (0.001)	0.001 (0.001)
Beds (total number)	0.0003*** (0.0001)	0.0002*** (0.0001)	0.0002*** (0.0001)	0.0002*** (0.00004)	0.00000 (0.0001)	0.00004 (0.00002)	0.0001*** (0.00002)	0.00003 (0.00003)	0.00003* (0.00002)
Total Operating Cost (£ million)	-0.00003 (0.0001)	-0.00003 (0.0001)	-0.0001 (0.0002)	-0.00004 (0.0001)	0.0003* (0.0002)	0.00001 (0.00004)	-0.0001** (0.00004)	0.0001 (0.0001)	0.00003 (0.00003)
Total inpatient admissions	-0.00000*** (0.00000)	-0.00000** (0.00000)	-0.00000* (0.00000)	-0.00000*** (0.00000)	-0.00000*** (0.00000)	-0.00000** (0.00000)	-0.00000** (0.00000)	-0.00000*** (0.00000)	-0.00000 (0.00000)
Female share of inpatient admissions (%)	0.0003 (0.002)	-0.0002 (0.002)	-0.001 (0.003)	-0.0004 (0.001)	-0.003 (0.003)	-0.0001 (0.001)	-0.00003 (0.001)	0.0001 (0.001)	-0.0002 (0.0004)
Inpatient admissions age 0-14 (%)	0.004 (0.009)	0.016 (0.010)	-0.004 (0.011)	0.003 (0.005)	-0.006 (0.005)	0.0001 (0.003)	0.006* (0.003)	0.003 (0.003)	0.002 (0.002)
Inpatient admissions age 15-29 (%)	0.014 (0.010)	0.034*** (0.011)	0.017 (0.012)	0.019*** (0.006)	-0.008 (0.006)	0.007* (0.004)	0.017*** (0.004)	-0.004 (0.004)	0.007** (0.003)
Inpatient admissions age 30-44 (%)	-0.006 (0.009)	0.003 (0.011)	-0.020* (0.012)	-0.011* (0.006)	-0.002 (0.007)	-0.004 (0.004)	-0.010*** (0.004)	0.001 (0.004)	-0.004 (0.003)
Inpatient admissions age 45-59 (%)	-0.008 (0.010)	0.007 (0.010)	-0.016 (0.012)	-0.008 (0.006)	-0.004 (0.005)	-0.003 (0.004)	0.002 (0.004)	-0.004 (0.003)	0.001 (0.003)
Inpatient admissions age 60-74 (%)	0.016* (0.009)	0.024** (0.010)	0.001 (0.011)	0.011** (0.006)	-0.004 (0.005)	0.002 (0.004)	0.009** (0.003)	-0.005 (0.003)	0.002 (0.002)
Inpatient admissions age 75-89 (%)	0.006 (0.010)	0.023* (0.012)	0.003 (0.013)	0.007 (0.006)	0.002 (0.005)	0.003 (0.004)	0.010*** (0.004)	0.007** (0.003)	0.004 (0.003)
Inpatient admissions age 90+ (%)	-0.017 (0.014)	-0.002 (0.015)	-0.027 (0.019)	-0.015* (0.009)	0.009 (0.008)	-0.005 (0.005)	-0.015*** (0.005)	-0.001 (0.005)	-0.002 (0.004)
Financial Year 2013/14							0.003 (0.009)		
Financial Year 2014/15							0.008 (0.009)		
Financial Year 2015/16							0.017* (0.010)		
Financial Year 2016/17							0.027** (0.013)		
Financial Year 2017/18				0.006 (0.009)			0.030** (0.013)		
Financial Year 2018/19				0.022** (0.010)			0.040*** (0.013)		
Lagged Summary Hospital-level Mortality Indicator									0.821*** (0.034)
Constant	0.695 (0.931)	-0.502 (0.963)	1.572 (1.052)	0.808 (0.532)		0.114 (0.335)	0.533 (0.326)		0.029 (0.236)
Observations	134	129	114	377	377	376	893	893	758
R ²	0.502	0.534	0.460	0.476	0.110	0.795	0.457	0.048	0.755
Adjusted R ²	0.439	0.473	0.377	0.451	-0.481	0.786	0.444	-0.151	0.749
F Statistic	7.946*** (df = 15; 118)	8.644*** (df = 15; 113)	5.555*** (df = 15; 98)	19.187*** (df = 17; 359)	1.859** (df = 15; 226)	86.922*** (df = 16; 359)	34.927*** (df = 21; 871)	2.480*** (df = 15; 738)	142.387*** (df = 16; 741)

Note:

*p<0.1; **p<0.05; ***p<0.01

Table 19: log Summary Hospital-level Mortality Indicator against log Management (FTE)

	<i>Dependent variable:</i>								
	log Summary Hospital-level Mortality Indicator								
	<i>cross-section</i> 2016/17	<i>cross-section</i> 2017/18	<i>cross-section</i> 2018/19	<i>pooled</i> 2016/17-2018/19	<i>fixed effects</i> 2016/17-2018/19	<i>lagged dependent variable</i> 2016/17-2018/19	<i>pooled</i> 2012/13-2018/19	<i>fixed effects</i> 2012/13-2018/19	<i>lagged dependent variable</i> 2012/13-2018/19
(1)	(2)	(3)	(4)	(5)	(6)	(7)	(8)	(9)	
log Managers (FTE)	-0.028* (0.015)	-0.024 (0.019)	-0.006 (0.023)	-0.021** (0.010)	-0.021* (0.012)	0.003 (0.006)			
log Managers (FTE - basic definition)							-0.022*** (0.007)	-0.005 (0.012)	-0.004 (0.005)
log Senior doctors (FTE)	-0.076* (0.043)	-0.086* (0.048)	-0.051 (0.055)	-0.073*** (0.027)	0.085 (0.066)	-0.003 (0.016)	-0.066*** (0.015)	0.027 (0.032)	-0.011 (0.011)
log NHS staff survey consolidated management score (%)	0.013 (0.194)	-0.098 (0.204)	-0.048 (0.202)	-0.020 (0.110)	0.147 (0.143)	0.013 (0.067)	-0.004 (0.062)	0.012 (0.065)	0.049 (0.042)
log Beds (total number)	0.187*** (0.055)	0.168*** (0.051)	0.161*** (0.051)	0.169*** (0.029)	0.012 (0.060)	0.035** (0.017)	0.146*** (0.017)	0.034 (0.024)	0.022* (0.013)
Total Operating Cost (£ million)	-0.00002 (0.0001)	-0.00003 (0.0001)	-0.0001 (0.0001)	-0.00004 (0.00004)	0.0003** (0.0001)	0.00000 (0.00002)	-0.0001*** (0.00002)	0.0002** (0.0001)	0.00001 (0.00002)
Total inpatient admissions	-0.00000** (0.00000)	-0.00000 (0.00000)	-0.00000 (0.00000)	-0.00000** (0.00000)	-0.00000*** (0.00000)	-0.00000** (0.00000)	-0.00000* (0.00000)	-0.00000*** (0.00000)	-0.00000 (0.00000)
Female share of inpatient admissions (%)	0.0002 (0.002)	0.00004 (0.002)	-0.001 (0.003)	-0.0005 (0.001)	-0.003 (0.003)	-0.0001 (0.001)	-0.001 (0.001)	-0.0001 (0.001)	-0.0001 (0.0004)
Inpatient admissions age 0-14 (%)	0.002 (0.009)	0.014 (0.010)	-0.001 (0.011)	0.003 (0.005)	-0.007 (0.005)	0.0001 (0.003)	0.006* (0.003)	0.003 (0.003)	0.002 (0.002)
Inpatient admissions age 15-29 (%)	0.014 (0.010)	0.033*** (0.011)	0.020* (0.012)	0.020*** (0.006)	-0.009 (0.006)	0.007* (0.004)	0.017*** (0.004)	-0.004 (0.004)	0.007** (0.003)
Inpatient admissions age 30-44 (%)	-0.011 (0.009)	-0.001 (0.011)	-0.019 (0.012)	-0.012** (0.006)	-0.001 (0.007)	-0.004 (0.004)	-0.011*** (0.004)	0.0004 (0.004)	-0.004* (0.003)
Inpatient admissions age 45-59 (%)	-0.010 (0.010)	0.007 (0.011)	-0.012 (0.012)	-0.007 (0.006)	-0.003 (0.005)	-0.003 (0.004)	0.001 (0.004)	-0.005 (0.003)	0.001 (0.003)
Inpatient admissions age 60-74 (%)	0.014 (0.009)	0.021** (0.011)	0.004 (0.011)	0.012** (0.006)	-0.005 (0.005)	0.002 (0.003)	0.009** (0.003)	-0.004 (0.003)	0.002 (0.003)
Inpatient admissions age 75-89 (%)	0.002 (0.010)	0.020 (0.012)	0.006 (0.014)	0.006 (0.006)	0.0003 (0.005)	0.003 (0.004)	0.009** (0.004)	0.006* (0.003)	0.004 (0.003)
Inpatient admissions age 90+ (%)	-0.013 (0.014)	0.001 (0.015)	-0.024 (0.019)	-0.012 (0.009)	-0.012 (0.008)	-0.003 (0.005)	-0.012** (0.005)	-0.001 (0.005)	-0.002 (0.004)
Financial Year 2013/14							0.004 (0.009)		
Financial Year 2014/15							0.011 (0.009)		
Financial Year 2015/16							0.018* (0.010)		
Financial Year 2016/17							0.024* (0.013)		
Financial Year 2017/18				0.007 (0.009)			0.028** (0.013)		
Financial Year 2018/19				0.024** (0.010)			0.040*** (0.014)		
Lagged log Summary Hospital-level Mortality Indicator							0.829*** (0.033)		0.757** (0.025)
Constant	-0.807 (1.295)	-1.567 (1.297)	-0.255 (1.407)	-0.743 (0.721)			-0.300 (0.441)	-0.881** (0.430)	-0.431 (0.310)
Observations	134	129	114	377	377	376	893	893	758
R ²	0.516	0.555	0.490	0.505	0.098	0.815	0.496	0.947	0.770
Adjusted R ²	0.459	0.500	0.417	0.483	-0.494	0.808	0.484	-0.150	0.765
F Statistic	9.050*** (df = 14; 119)	10.147*** (df = 14; 114)	6.781*** (df = 14; 99)	22.951*** (df = 16; 360)	1.765** (df = 14; 227)	105.882*** (df = 15; 360)	42.830*** (df = 20; 872)	2.629*** (df = 14; 730)	165.484*** (df = 15; 742)

Note:

*p<0.1; **p<0.05; ***p<0.01

Table 20: Summary Hospital-level Mortality Indicator against Management Spend (£)

	<i>Dependent variable:</i>					
	Summary Hospital-level Mortality Indicator					
	<i>cross-section 2016/17</i>	<i>cross-section 2017/18</i>	<i>cross-section 2018/19</i>	<i>pooled 2016/17-2018/19</i>	<i>fixed effects 2016/17-2018/19</i>	<i>lagged dependent variable 2016/17-2018/19</i>
(1)	(2)	(3)	(4)	(5)	(6)	
Management spend (£ million)	-0.007 (0.005)	-0.001 (0.005)	0.006 (0.006)	-0.0004 (0.003)	0.004 (0.004)	0.003* (0.002)
Management spend (£ million) squared	0.000 (0.000)	-0.000 (0.000)	-0.000 (0.000)	-0.000 (0.000)	-0.000* (0.000)	-0.000* (0.000)
Senior doctors (FTE)	-0.0002 (0.0002)	-0.0002 (0.0002)	-0.0001 (0.0002)	-0.0001 (0.0001)	0.0005** (0.0002)	-0.00002 (0.0001)
NHS staff survey consolidated management score (%)	-0.001 (0.003)	-0.003 (0.003)	-0.002 (0.003)	-0.002 (0.002)	0.002 (0.002)	0.0003 (0.001)
Beds (total number)	0.0003*** (0.0001)	0.0002*** (0.0001)	0.0002*** (0.0001)	0.0002*** (0.00004)	0.00002 (0.0001)	0.00003 (0.00002)
Total Operating Cost (£ million)	-0.0001 (0.0001)	-0.00003 (0.0001)	-0.0001 (0.0002)	-0.0001 (0.0001)	0.0003 (0.0002)	0.00002 (0.00004)
Total inpatient admissions	-0.00000*** (0.00000)	-0.00000** (0.00000)	-0.00000* (0.00000)	-0.00000*** (0.00000)	-0.00000*** (0.00000)	-0.00000** (0.00000)
Female share of inpatient admissions (%)	0.0004 (0.002)	0.0002 (0.002)	-0.001 (0.003)	-0.0001 (0.001)	-0.003 (0.003)	-0.00002 (0.001)
Inpatient admissions age 0-14 (%)	0.005 (0.009)	0.016* (0.010)	-0.003 (0.011)	0.003 (0.005)	-0.006 (0.005)	0.0005 (0.003)
Inpatient admissions age 15-29 (%)	0.015 (0.010)	0.034*** (0.011)	0.018 (0.012)	0.019*** (0.006)	-0.008 (0.006)	0.007** (0.004)
Inpatient admissions age 30-44 (%)	-0.006 (0.009)	0.004 (0.011)	-0.019 (0.012)	-0.010* (0.006)	-0.001 (0.007)	-0.003 (0.004)
Inpatient admissions age 45-59 (%)	-0.008 (0.010)	0.007 (0.010)	-0.014 (0.012)	-0.007 (0.006)	-0.004 (0.005)	-0.003 (0.004)
Inpatient admissions age 60-74 (%)	0.016* (0.009)	0.024** (0.011)	0.003 (0.011)	0.012** (0.006)	-0.003 (0.005)	0.002 (0.004)
Inpatient admissions age 75-89 (%)	0.007 (0.010)	0.023** (0.012)	0.004 (0.013)	0.008 (0.006)	0.001 (0.005)	0.003 (0.004)
Inpatient admissions age 90+ (%)	-0.016 (0.014)	-0.001 (0.015)	-0.026 (0.019)	-0.015* (0.009)	0.009 (0.008)	-0.004 (0.005)
Financial Year 2017/18				0.006 (0.009)		
Financial Year 2018/19				0.022** (0.010)		
Lagged Summary Hospital-level Mortality Indicator						0.822*** (0.034)
Constant	0.647 (0.932)	-0.580 (0.974)	1.456 (1.061)	0.750 (0.534)		0.063 (0.334)
Observations	134	129	114	377	377	376
R ²	0.498	0.531	0.460	0.474	0.123	0.796
Adjusted R ²	0.435	0.468	0.377	0.449	-0.460	0.787
F Statistic	7.816*** (df = 15; 118)	8.522*** (df = 15; 113)	5.558*** (df = 15; 98)	19.034*** (df = 17; 359)	2.105** (df = 15; 226)	87.694*** (df = 16; 359)

Note:

*p<0.1; **p<0.05; ***p<0.01

Table 21: log Summary Hospital-level Mortality Indicator against log Management Spend (£)

	<i>Dependent variable:</i>					
	log Summary Hospital-level Mortality Indicator					
	<i>cross-section</i> 2016/17	<i>cross-section</i> 2017/18	<i>cross-section</i> 2018/19	<i>pooled</i> 2016/17-2018/19	<i>fixed effects</i> 2016/17-2018/19	<i>lagged dependent variable</i> 2016/17-2018/19
(1)	(2)	(3)	(4)	(5)	(6)	
log Management spend (£ million)	-0.029 (0.018)	-0.019 (0.022)	0.006 (0.025)	-0.015 (0.012)	-0.016 (0.011)	0.003 (0.007)
log Senior doctors (FTE)	-0.073* (0.043)	-0.086* (0.048)	-0.057 (0.055)	-0.074*** (0.027)	0.083 (0.066)	-0.004 (0.016)
log NHS staff survey consolidated management score (%)	0.010 (0.195)	-0.112 (0.206)	-0.076 (0.202)	-0.033 (0.111)	0.142 (0.143)	0.013 (0.067)
log Beds (total number)	0.184*** (0.056)	0.162*** (0.051)	0.156*** (0.051)	0.163*** (0.029)	0.011 (0.060)	0.035** (0.017)
Total Operating Cost (£ million)	-0.00001 (0.0001)	-0.00002 (0.0001)	-0.0001 (0.0001)	-0.00004 (0.00004)	0.0003** (0.0001)	0.00000 (0.00002)
Total inpatient admissions	-0.00000** (0.00000)	-0.00000 (0.00000)	-0.00000 (0.00000)	-0.00000** (0.00000)	-0.00000*** (0.00000)	-0.00000** (0.00000)
Female share of inpatient admissions (%)	0.0004 (0.002)	0.0003 (0.002)	-0.001 (0.003)	-0.0002 (0.001)	-0.004 (0.003)	-0.0001 (0.001)
Inpatient admissions age 0-14 (%)	0.003 (0.009)	0.015 (0.010)	-0.001 (0.011)	0.003 (0.005)	-0.007 (0.005)	0.00003 (0.003)
Inpatient admissions age 15-29 (%)	0.014 (0.010)	0.033*** (0.011)	0.020* (0.012)	0.020*** (0.006)	-0.009 (0.006)	0.007* (0.004)
Inpatient admissions age 30-44 (%)	-0.011 (0.009)	-0.001 (0.011)	-0.020 (0.012)	-0.012** (0.006)	-0.001 (0.007)	-0.004 (0.004)
Inpatient admissions age 45-59 (%)	-0.010 (0.010)	0.007 (0.011)	-0.013 (0.012)	-0.007 (0.006)	-0.004 (0.005)	-0.003 (0.004)
Inpatient admissions age 60-74 (%)	0.014 (0.009)	0.021** (0.011)	0.004 (0.011)	0.012** (0.006)	-0.004 (0.005)	0.002 (0.003)
Inpatient admissions age 75-89 (%)	0.003 (0.010)	0.020 (0.012)	0.006 (0.014)	0.007 (0.006)	-0.00001 (0.005)	0.003 (0.004)
Inpatient admissions age 90+ (%)	-0.013 (0.014)	0.003 (0.015)	-0.024 (0.019)	-0.011 (0.009)	0.010 (0.008)	-0.003 (0.005)
Financial Year 2017/18				0.007 (0.009)		
Financial Year 2018/19				0.024** (0.010)		
Lagged log Summary Hospital-level Mortality Indicator						0.828*** (0.033)
Constant	-0.918 (1.296)	-1.593 (1.340)	-0.101 (1.427)	-0.766 (0.730)		-0.287 (0.445)
Observations	134	129	114	377	377	376
R ²	0.513	0.552	0.489	0.502	0.096	0.815
Adjusted R ²	0.455	0.497	0.417	0.480	-0.498	0.808
F Statistic	8.947*** (df = 14; 119)	10.020*** (df = 14; 114)	6.780*** (df = 14; 99)	22.653*** (df = 16; 360)	1.712* (df = 14; 227)	105.874*** (df = 15; 360)

Note:

*p<0.1; **p<0.05; ***p<0.01