

Global analysis of daily new COVID-19 cases reveals many static-phase countries including US and UK potentially with unstoppable epidemics

Results

Table S1 Statistics of daily new cases of static-phase countries during the period of static phase

| Static-phase countries | Mean±SD of daily new cases | Starting date of the period (ending on April 19) |
|-------------------------------|-----------------------------------|---|
| US | 29926±3059 | March 31 |
| UK | 4995±1144 | April 1 |
| Belgium | 1356±387 | March 28 |
| Canada | 1368±226 | March 30 |
| Netherlands | 1045±167 | March 28 |
| Sweden | 517±120 | March 31 |
| Chile | 364±84 | March 27 |
| Poland | 374±79 | April 2 |
| Romania | 353±90 | April 3 |
| Philippines | 237±110 | March 28 |
| Algeria | 102±33 | March 31 |
| Moldova | 113±37 | April 2 |

Table S2 Case density, testing density and level of positive COVID-19 tests among the 61 most affected countries ^a

| No. | downward countries | case density | test density | positive test | No. | upward countries | case density | test density | positive test |
|-----|------------------------|--------------|--------------|---------------|-----|--------------------|--------------|--------------|---------------|
| 1 | Spain | 4367 | 19896 | 0.21949 | 1 | Russia | 362 | 14682 | 0.02463 |
| 2 | Italy | 3043 | 23985 | 0.12685 | 2 | Brazil | 203 | 1373 | 0.14757 |
| 3 | France | 2421 | 7103 | 0.34087 | 3 | India | 15 | 325 | 0.04484 |
| 4 | Germany | 1772 | 20629 | 0.08589 | 4 | Peru | 541 | 4723 | 0.11454 |
| 5 | Iran | 1010 | 4354 | 0.23187 | 5 | Saudi Arabia | 334 | 14362 | 0.02326 |
| 6 | Switzerland | 3243 | 26293 | 0.12332 | 6 | Ecuador | 589 | 1892 | 0.31142 |
| 7 | Portugal | 2097 | 27647 | 0.07584 | 7 | Pakistan | 43 | 506 | 0.08555 |
| 8 | Austria | 1651 | 20987 | 0.07869 | 8 | Mexico | 74 | 384 | 0.19167 |
| 9 | Israel | 1611 | 27763 | 0.05802 | 9 | Singapore | 1560 | 16203 | 0.09626 |
| 10 | Denmark | 1329 | 17358 | 0.07653 | 10 | UAE | 784 | 79875 | 0.00982 |
| 11 | Norway | 1336 | 26798 | 0.04984 | 11 | Indonesia | 26 | 184 | 0.14165 |
| 12 | Czechia | 657 | 16679 | 0.03937 | 12 | Serbia | 789 | 5191 | 0.15191 |
| 13 | Australia | 261 | 17412 | 0.01497 | 13 | Belarus | 711 | 11487 | 0.06194 |
| 14 | Malaysia | 169 | 3344 | 0.05066 | 14 | Qatar | 2268 | 23160 | 0.09791 |
| 15 | Luxembourg | 5780 | 55852 | 0.10348 | 15 | Ukraine | 140 | 1418 | 0.0988 |
| 16 | Thailand | 40 | 2043 | 0.01971 | 16 | Dominican Republic | 465 | 1565 | 0.29718 |
| 17 | Greece | 230 | 5341 | 0.04313 | 17 | Egypt | 34 | 537 | 0.06345 |
| 18 | Croatia | 465 | 6482 | 0.0717 | 18 | Bangladesh | 21 | 180 | 0.11434 |
| 19 | Ireland | 3248 | 22598 | 0.14375 | 19 | Morocco | 87 | 490 | 0.17729 |
| 20 | S. Korea | 209 | 11138 | 0.01873 | 20 | Kuwait | 487 | -- | -- |
| 21 | Japan | 91 | 985 | 0.09243 | -- | -- | -- | -- | -- |
| No. | static-phase countries | case density | test density | positive test | No. | uncertain ones | case density | test density | positive test |
| 1 | USA | 2474 | 12651 | 0.19553 | 1 | Turkey | 1133 | 8459 | 0.13399 |
| 2 | UK | 1901 | 7886 | 0.24105 | 2 | Panama | 1117 | 5076 | 0.22012 |
| 3 | Belgium | 3534 | 14419 | 0.24508 | 3 | Colombia | 82 | 1281 | 0.06367 |
| 4 | Canada | 1018 | 15099 | 0.06742 | 4 | Finland | 724 | 11154 | 0.06495 |
| 5 | Netherlands | 1992 | 10004 | 0.19913 | 5 | South Africa | 58 | 2140 | 0.0273 |
| 6 | Sweden | 1517 | 9357 | 0.16214 | 6 | Argentina | 70 | 810 | 0.08588 |
| 7 | Chile | 567 | 6401 | 0.08853 | 7 | Hungary | 217 | 5181 | 0.04192 |
| 8 | Poland | 260 | 5928 | 0.04393 | -- | -- | -- | -- | -- |
| 9 | Romania | 480 | 5279 | 0.09101 | -- | -- | -- | -- | -- |
| 10 | Philippines | 60 | 592 | 0.10177 | -- | -- | -- | -- | -- |
| 11 | Algeria | 64 | 148 | 0.43246 | -- | -- | -- | -- | -- |
| 12 | Moldova | 648 | 2916 | 0.22222 | -- | -- | -- | -- | -- |

^a China was not list here due to lack of testing information in the Worldometer website

Figure S1

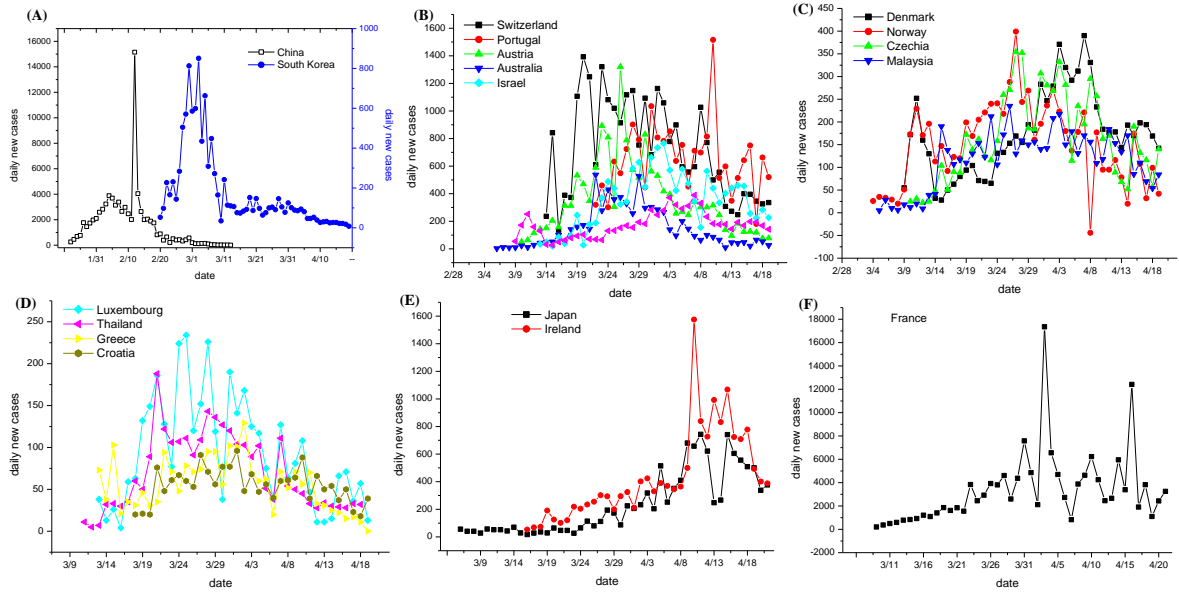


Figure S1. Daily new cases in downward countries over time.

(A) China and South Korea have almost contained the domestic epidemic, with minimal daily new cases since April. (B, C and D) These downward countries show typical declining daily new cases after passing peaks. Data (as of 19 April, 2020) are collected from Worldometer . (E and F) Daily new cases appear to decline in the past 9 days in Japan and Ireland (panel E), and slightly decline in the past 19 days in France (panel F).

Figure S2

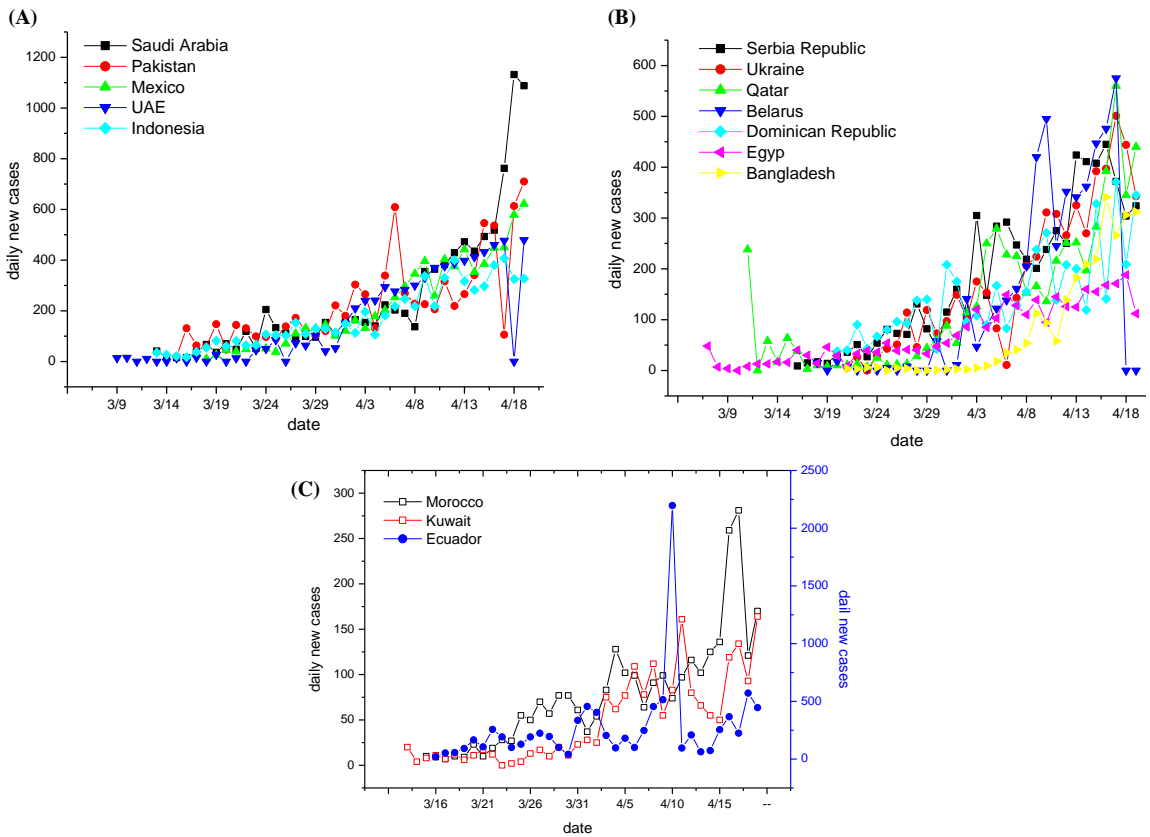


Figure S2. Daily new cases in upward countries over time.

(A, B) These upward countries show typical elevating daily new cases without apparent peaks. Data (as of 19 April, 2020) are collected from Worldometer . (C) These upward countries show slight increase in daily new cases over time, particularly for Ecuador.

Figure S3

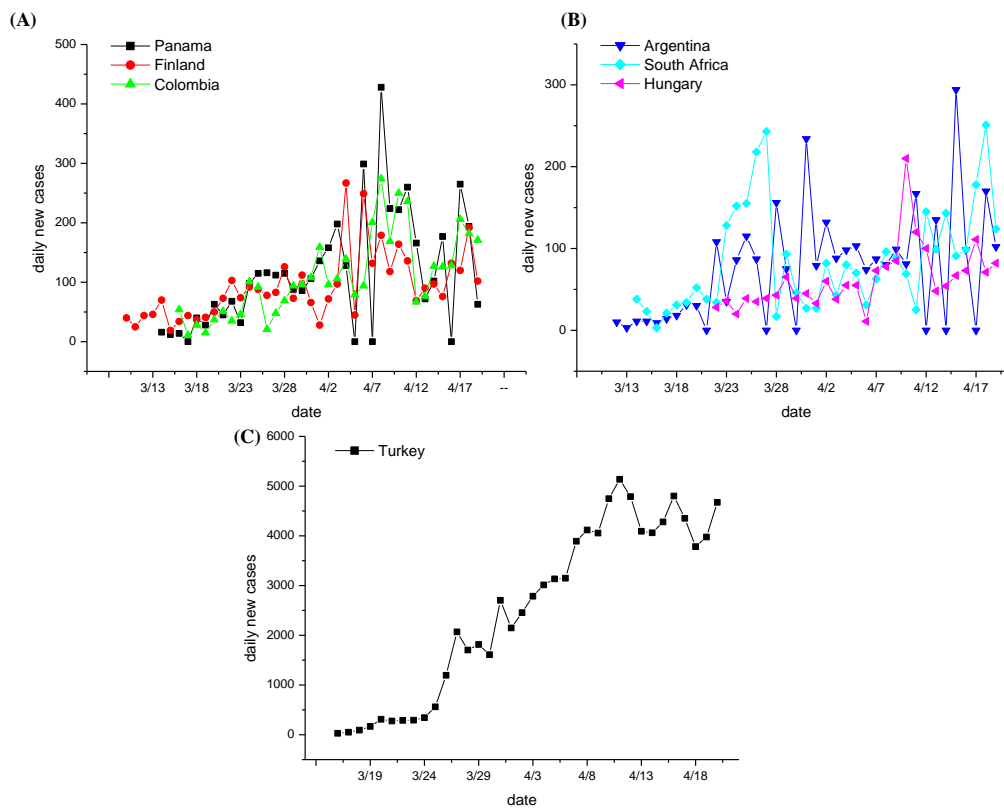


Figure S3. Daily new cases in uncertain countries over time.

(A, B) These countries show dramatic variation in daily new cases and therefore it is hard to determine the trends of the epidemic. (C) Turkey appears to reach the peak in daily new cases. However, whether it will decline as downward countries or enter into a static phase like static-phase countries remains unknown and more time is needed to determine the trend of the epidemic in Turkey.

Figure S4

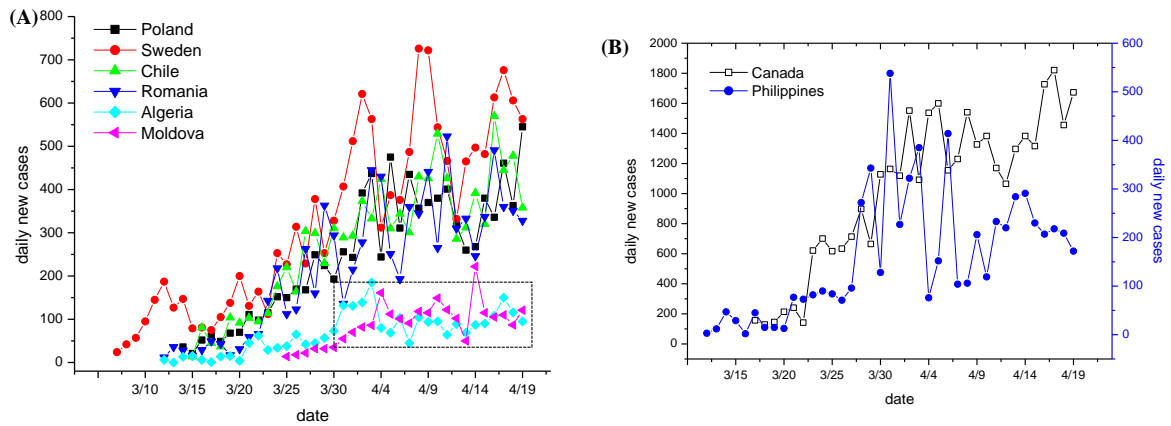


Figure S4 Daily new cases in static-phase countries over time

(A) Daily new cases in these countries are largely constant in the past over 14 days (as indicated by dotted windows). (B). Canada and Philippines are in states of near static-phase: daily new cases in Canada appear to reach a plateau since April 1 but slightly increase since April 16; daily new cases in Philippines vary dramatically since March 28 but appear to stabilize at a value of 237 ± 110 (mean \pm SD; for other countries, refer to Table S2).

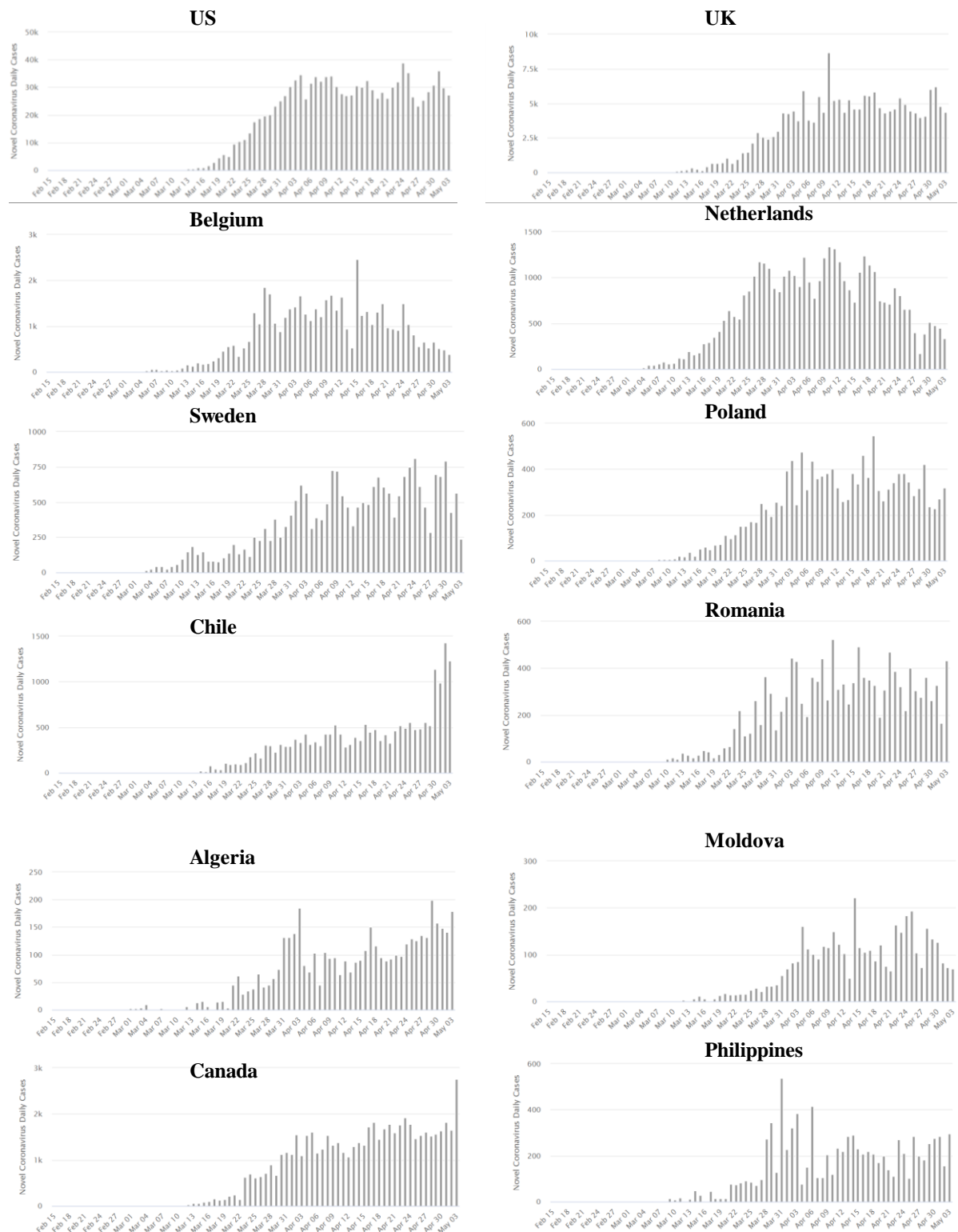


Figure S5. Daily new cases in static-phase countries over time (as of May 3, 2020).
 Data collected from worldometer (<https://www.worldometers.info/coronavirus/>)

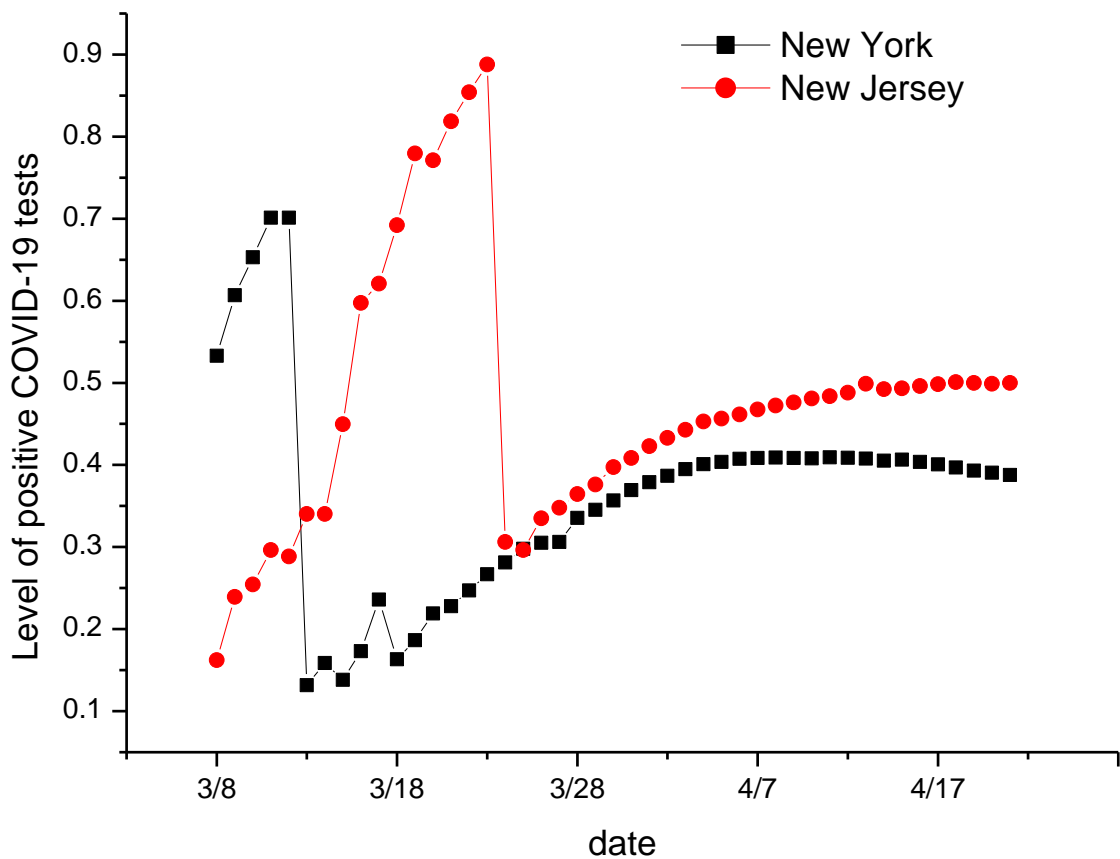


Figure S6. Level of positive COVID-19 tests in the two most affected states of the US

Levels of daily positive COVID-19 tests in the two most affected US states (New York and New Jersey) over time. Data were collected from the website of the COVID Tracking Project (<https://covidtracking.com/api>).

References:

Worldometer: COVID-19 CORONAVIRUS PANDEMIC, <https://www.worldometers.info/coronavirus/>.