

Supplementary Information for

Age-stratified model of the COVID-19 epidemic to analyze the impact of relaxing lockdown measures: nowcasting and forecasting for Switzerland

by

*Fadoua Balabdaoui and Dirk Mohr**

F. Balabdaoui¹, D. Mohr²

¹Seminar of Statistics, Department of Mathematics, Swiss Federal Institute of Technology (ETH), Sälimistrasse 101, Zurich, 8092, Switzerland

²Department of Mechanical and Process Engineering, Swiss Federal Institute of Technology (ETH), Tannenstrasse 3, Zurich, 8092, Switzerland

*email of corresponding author: dmohr@ethz.ch

Supplementary notes

Probability of death in sub-compartments

For the compartments C (self-isolation), H (middle-care unit) and Q (intensive care unit), we define a fatality ratio as a function of age and the duration in the compartment. The time dependency is modeled through a bump function. For a compartment with a transit time of T , the time dependent fatality ratio reads

$$p(t, a) = \frac{p_0(a)}{0.4439} \exp\left(\frac{1}{[t/(T/2)+1]^2 - 1}\right) \quad \text{for } -T/2 \leq t \leq T/2$$

with the age dependent parameter $p_0 = p_0(a)$. The continuous function is converted into a discrete version providing the fatality ratio per sub-compartment k using the expression

$$p^{(k)}(a) = \frac{1}{\Delta t} \int_{(k-1)\Delta t}^{k\Delta t} p(a, t) dt \quad \text{with } k = 1, \dots, T/\Delta t$$

with $\Delta t = 1 \text{ day}$. The overall probabilities of death in the above compartments are provided in Supplementary Table 1. The transit times corresponds to the number of sub-compartments (Fig. 1), i.e. 6 days for self-isolation, 7 days for MCU and 8 days for ICU. A bar plot of the daily risks of death in ICU for age-groups #9 to #17 is given in Supplementary Fig. 7.

Sample size needed for random testing

Despite the availability of a wealth of data on the hospitalizations and deaths, data on the number of past infected in a random population is still missing. With the emergence of reliable serological tests for detecting past infections, the testing of a randomly selected sample of the Swiss population may be envisioned to further validate the estimates from epidemiological modeling.

In the sequel, we estimate the size of the random sample required to validate the current fraction η of the infected individual in the total population with reasonable accuracy. Standard Gaussian approximation of the estimated proportion $\tilde{\eta}_N$ obtained from the outcome of N independent tests implies that with asymptotic probability of 95% the proportion of infected belongs to the confidence interval $[\tilde{\eta}_N - L/2, \tilde{\eta}_N + L/2]$ with

$$L = \frac{2z_{0.975}}{\sqrt{N}} \sqrt{\eta(1-\eta)}$$

where $z_{0.975} = 1.96$ denotes the 97.5% upper quantile of a standard Gaussian distribution. Measuring a fraction of infection of about $\eta = 0.1$ (which corresponds to our model estimate for early June) with an accuracy of ± 0.005 ($\pm 5\%$) would hence require minimum sample size of $N_{\min} = 13,830$. An accuracy of $\pm 10\%$ would already be achieved with $N_{\min} = 3,457$.

Multi-variate effect of the probabilities of transmission

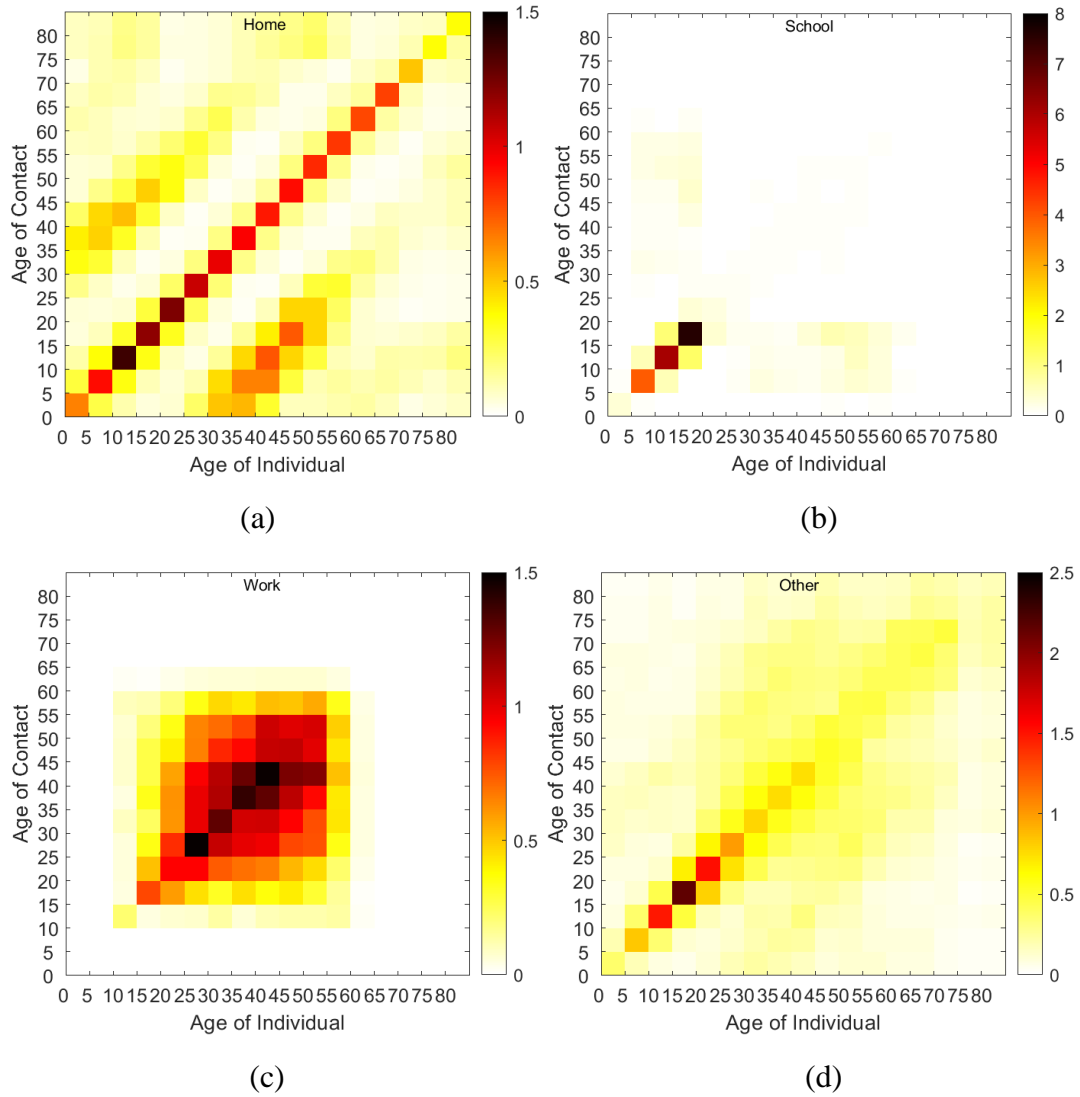
To complement the results of the relaxation scenarios discussed in the main document, we also present the results from a parametric study on the effect of the rate of transmission at different locations. The baseline scenario for our computations is that presented in Fig. 7. In particular, the history until June 8 is the same. After June 8, we still consider that 30% of the workforce stays in home office ($\phi_{work} = 0.65$), a reduced rate of contacts at other locations ($\phi_{other} = 0.7$) and open schools ($\phi_{school} = 1$). However, the probability of transmission at these three locations is varied from 0.25 to 1.0 with steps of 0.25. The resulting matrix of all 64 combinations of β_{other}^* , β_{work}^* and β_{school}^* is given in Supplementary Table 2 along with the main model outputs (second peak in ICU, fraction of total population infected, and fatalities by Dec 2020). For 44 scenarios, the number of fatalities exceeds that of the baseline scenario. Unless a probability of transmission of 0.25 is reached for at least one location, the number of fatalities will exceed 7'000. The analysis of the linear correlation coefficients ρ between the probabilities of transmission at different locations and the number of fatalities ($\rho_{other} = 0.70$, $\rho_{work} = 0.50$ and $\rho_{school} = 0.48$) revealed that the protection at all three locations is crucial to maintain a low number of fatalities after relaxing the lockdown.

Supplementary Tables

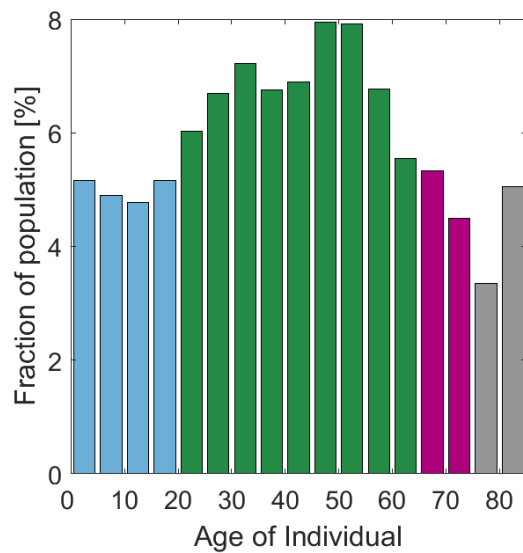
Supplementary Table 1 Model parameters (discrete probability functions) for COVID-19 in Switzerland																	
Probabilities	age-groups 1 to 17																
	0-4	5-9	10-14	15-19	20-24	25-29	30-34	35-39	40-44	45-49	50-54	55-59	60-64	65-69	70-74	75-79	>80
Hospitalization of symptomatic	0.2%	0.2%	0.2%	0.2%	0.7%	0.7%	0.7%	0.7%	0.8%	1.2%	2.5%	3.9%	8.0%	12.3%	18.0%	27.1%	40.0%
Transfer from MCU to ICU	-	-	-	1.0%	4.2%	8.5%	12.7%	17.0%	21.2%	25.5%	25.5%	29.7%	29.7%	29.7%	29.7%	15.6%	7.8%
Death in self-isolation	-	-	-	-	-	-	-	-	-	-	-	-	-	-	-	2.3%	7.3%
Death in MCU	-	-	-	-	-	-	-	-	-	-	-	-	-	-	-	-	18.0%
Death in ICU	0.9%	0.9%	0.9%	0.9%	0.9%	0.9%	0.9%	0.9%	0.9%	0.9%	5.3%	10.9%	20.5%	30.1%	41.8%	57.7%	64.2%

Supplementary Table 2 Multivariate effect of the probability of transmission						
scenario	Probability of transmission at			Fraction of population infected by Dec 2020	Second peak in ICU [per 100,000]	Fatalities by Dec 2020
	other locations	work	school			
1	1	1	1	60.0	2,048	16,196
2	1	1	0.75	57.5	1,732	15,543
3	1	0.75	1	55.3	1,689	15,103
4	1	1	0.5	54.5	1,425	14,737
5	1	0.75	0.75	52.3	1,356	14,279
6	0.75	1	1	55.4	1,585	13,925
7	1	0.5	1	50.0	1,365	13,811
8	1	1	0.25	50.9	1,149	13,744
9	1	0.75	0.5	48.4	1,034	13,206
10	0.75	1	0.75	52.4	1,281	13,175
11	0.75	0.75	1	50.1	1,267	12,767
12	1	0.5	0.75	46.1	1,022	12,750
13	1	0.25	1	44.2	1,089	12,380
14	0.75	1	0.5	48.7	992	12,219
15	0.75	0.75	0.75	46.3	953	11,801
16	1	0.75	0.25	43.4	751	11,772
17	0.5	1	1	50.3	1,181	11,741
18	0.75	0.5	1	44.2	995	11,453
19	1	0.5	0.5	40.9	695	11,251
20	1	0.25	0.75	39.4	748	11,036
21	0.75	1	0.25	44.1	742	10,999
22	0.5	1	0.75	46.7	896	10,881
23	0.5	0.75	1	44.5	914	10,568
24	0.75	0.75	0.5	41.3	659	10,468
25	0.75	0.5	0.75	39.5	681	10,211
26	0.75	0.25	1	38.4	777	10,105
27	0.5	1	0.5	41.9	634	9,728
28	0.25	1	1	44.9	844	9,707
29	0.5	0.75	0.75	39.8	627	9,447
30	0.5	0.5	1	38.4	699	9,323
31	1	0.5	0.25	33.7	423	9,097
32	1	0.25	0.5	32.7	435	9,020
33	0.25	1	0.75	40.4	586	8,723
34	0.75	0.75	0.25	34.6	417	8,630
35	0.75	0.25	0.75	32.8	476	8,597
36	0.25	0.75	1	38.7	632	8,589
37	0.75	0.5	0.5	32.8	397	8,366
38	0.5	1	0.25	35.9	422	8,218
39	0.5	0.25	1	32.9	536	8,164
40	0.5	0.5	0.75	32.8	424	7,925
41	0.5	0.75	0.5	33.3	374	7,816
42	0.25	0.5	1	32.9	472	7,510
43	0.25	1	0.5	34.3	362	7,336
44	0.25	0.75	0.75	33.1	383	7,327
Reference (Fig. 7)	0.3	0.3	1	29.9	411	7,062
45	0.25	0.25	1	28.1	359	6,607
46	0.5	0.25	0.75	26.6	286	6,584
47	0.75	0.25	0.5	24.7	229	6,379
48	1	0.25	0.25	23.6	208	6,344
49	0.25	0.5	0.75	26.4	247	6,040
50	0.75	0.5	0.25	24.0	196	6,007
51	0.5	0.5	0.5	24.6	203	5,901
52	0.5	0.75	0.25	25.0	193	5,797
53	0.25	1	0.25	26.6	201	5,666
54	0.25	0.75	0.5	25.0	187	5,536
55	0.25	0.25	0.75	21.5	166	5,070
56	0.5	0.25	0.5	18.5	122	4,538
57	0.75	0.25	0.25	16.6	115	4,239
58	0.25	0.5	0.5	18.2	107	4,212
59	0.5	0.5	0.25	16.8	104	4,046
60	0.25	0.75	0.25	17.4	94	3,935
61	0.25	0.25	0.5	14.6	84	3,497
62	0.5	0.25	0.25	13.2	89	3,258
63	0.25	0.5	0.25	13.2	81	3,142
64	0.25	0.25	0.25	11.7	75	2,842

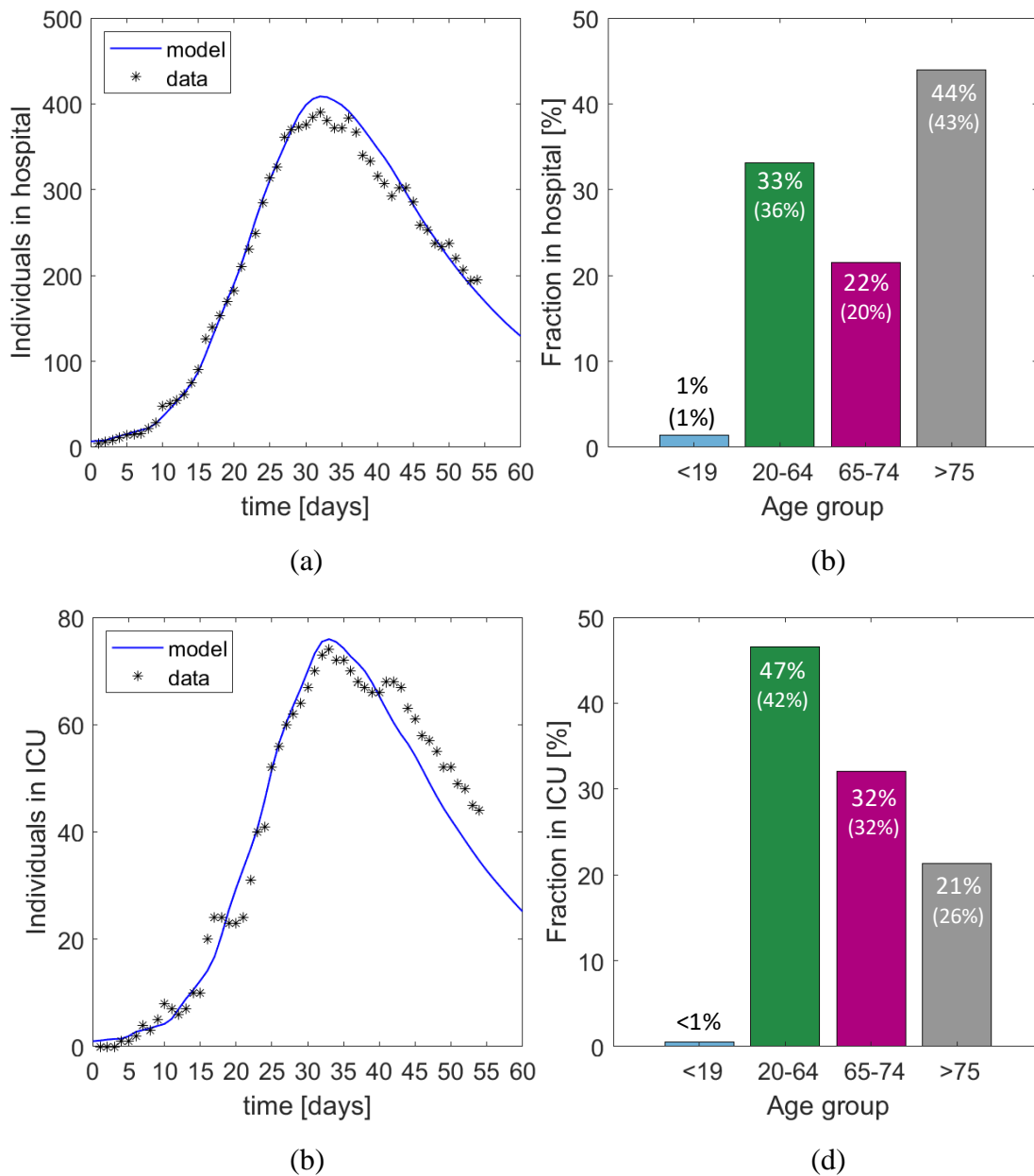
Supplementary Figures



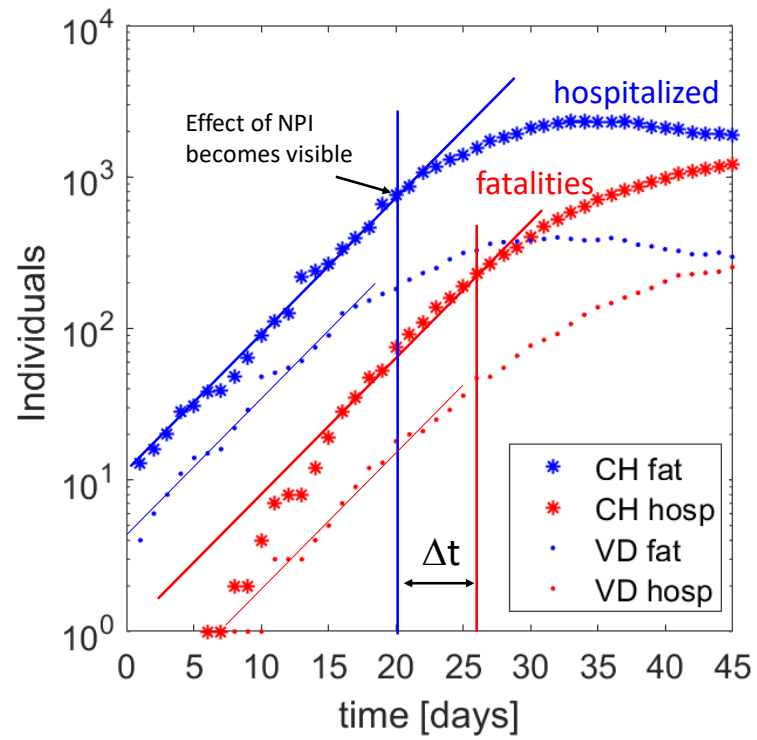
Supplementary Fig. 1. Contact maps for Switzerland as adopted from Prem et al. (2017) for contacts (a) at home, (b) at school, (c) at work, (d) at other locations.



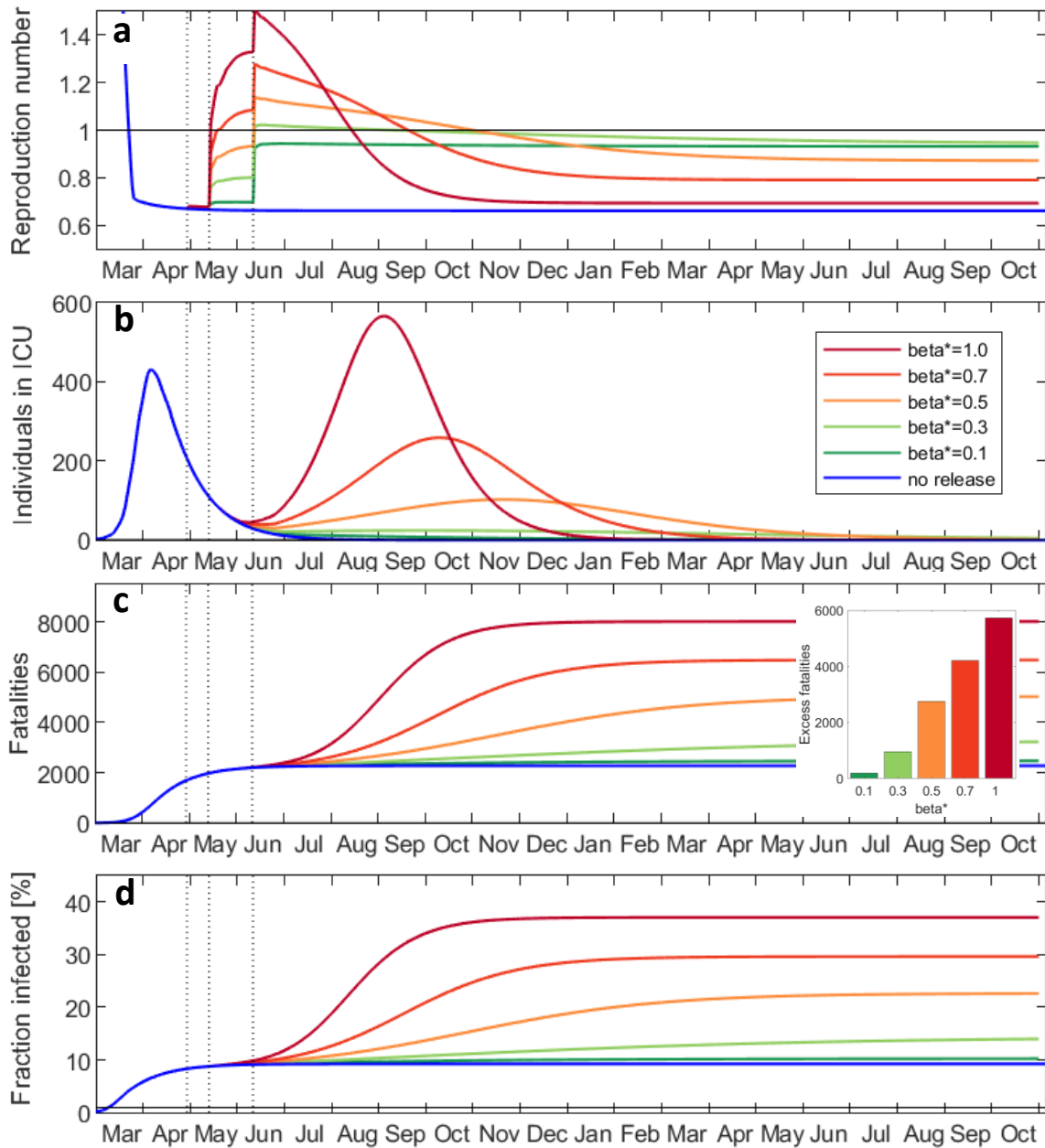
Supplementary Fig. 2. Age distribution in Switzerland in 2016 after www.populationpyramid.net (total population: 8,379,914).



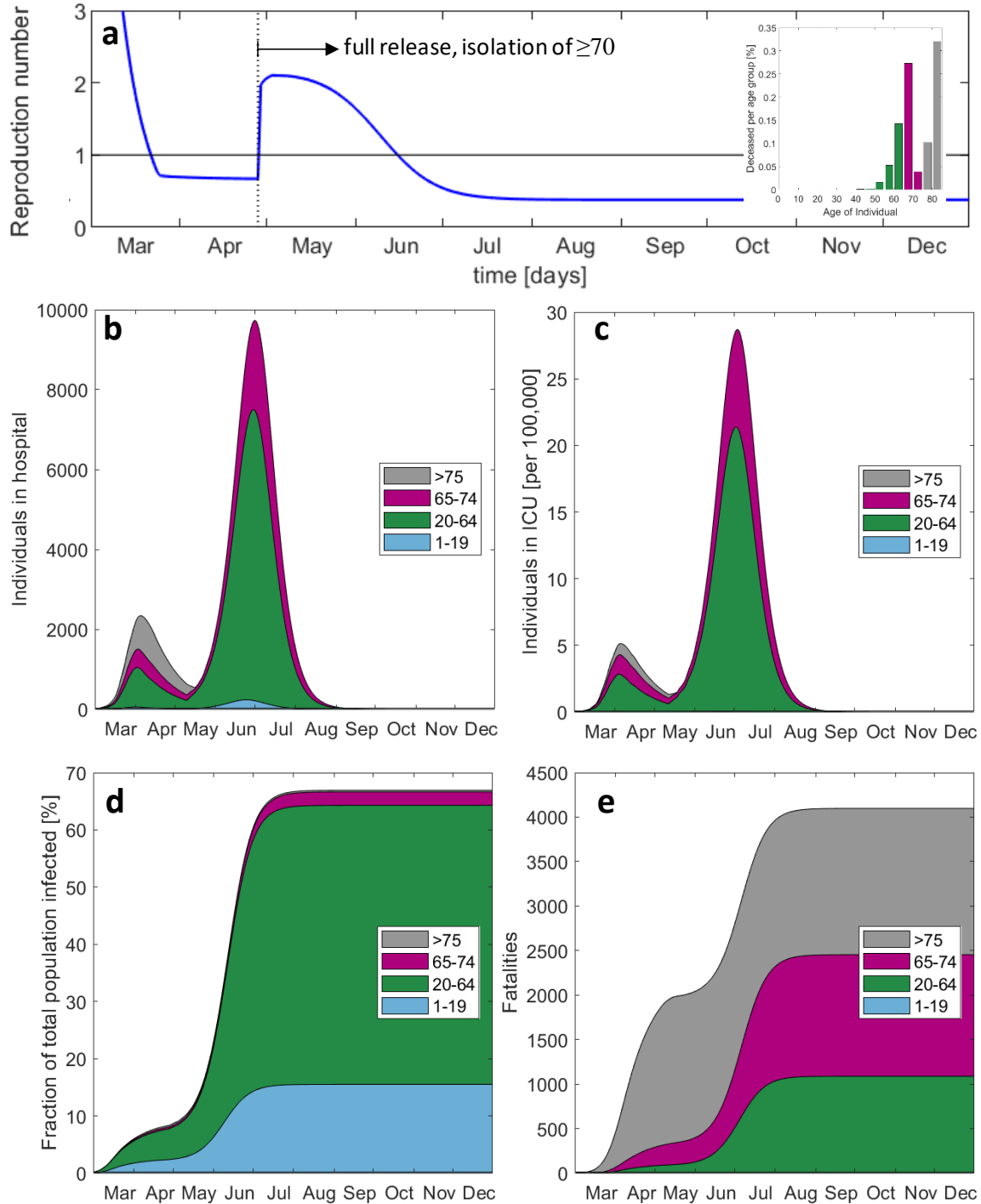
Supplementary Fig. 3. Model identification and validation for the canton Vaud. (a) history of individuals in hospital (MCU and ICU), (b) predicted age-distribution in hospital, (c) history of individuals in ICU, (d) predicted age-distribution in ICU. The values in parentheses in (b) and (d) are data published by the canton Vaud for April 2020.



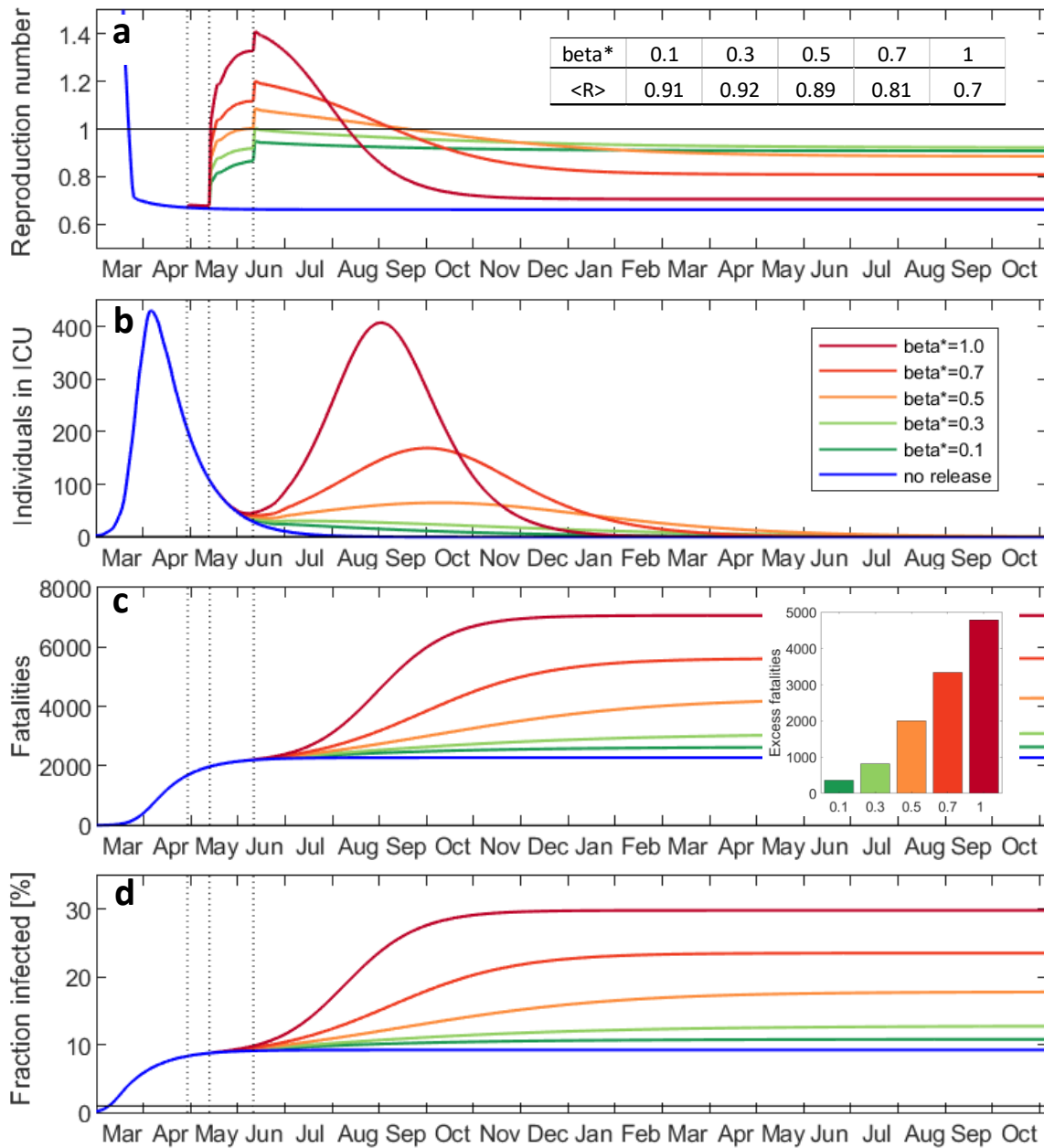
Supplementary Fig. 4. Logarithmic plot of the histories of currently hospitalized and accumulated deceased in Switzerland and the canton Vaud. Day 1 on the time axis corresponds to March 1, 2020.



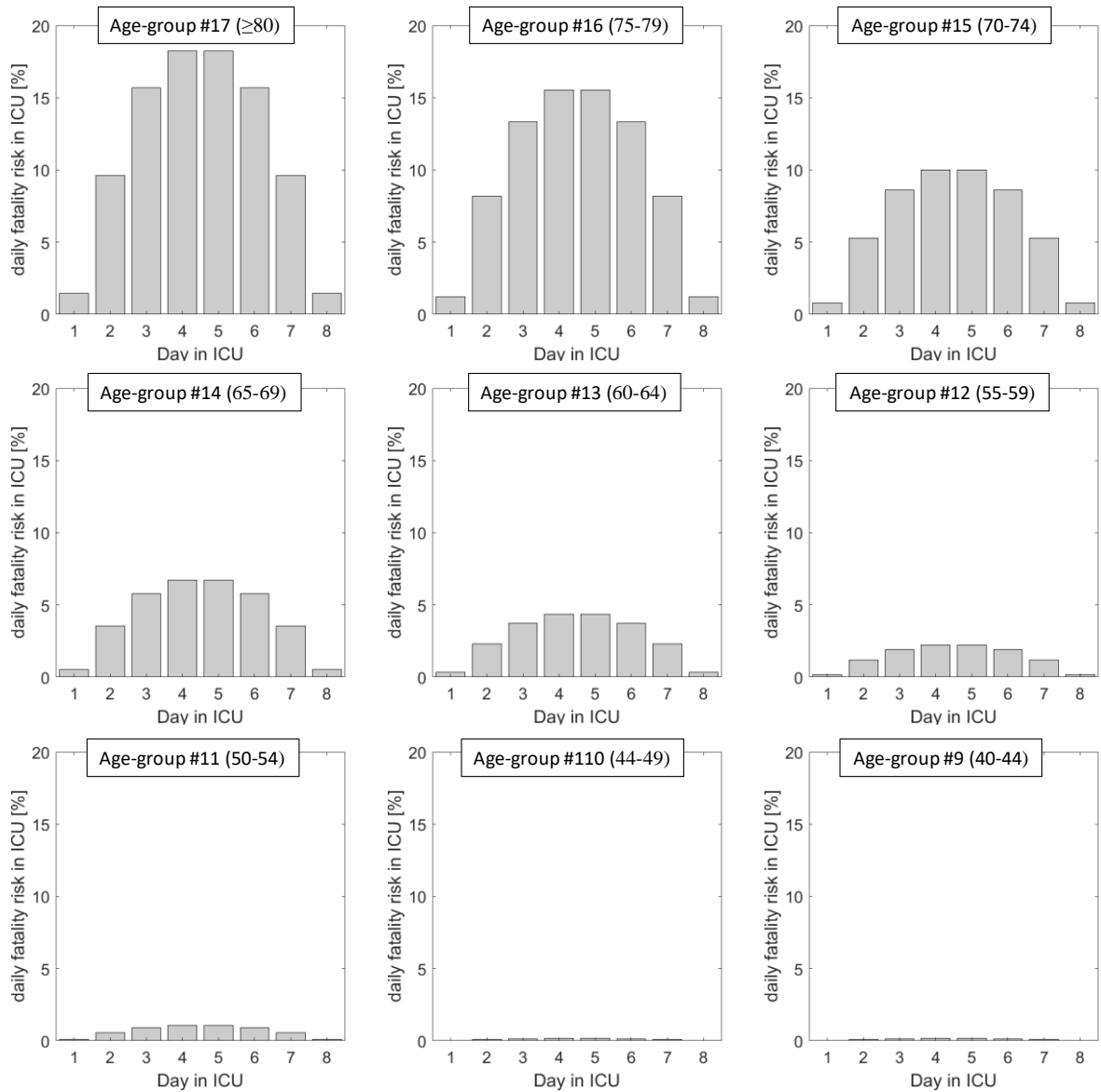
Supplementary Fig 5. Effect of special caution at school (for all age groups) on the evolution of the epidemic under the assumption of no home office (95% of workforce back). Histories of (a) average reproduction number, (b) individuals in ICU, and (c) accumulated fatalities. The factor β^* represents the reduction of the probability of transmission at school.



Supplementary Fig. 6. Predicted evolution of the epidemic after full release of all measures after isolating individuals aged 70 years upwards. (a) average reproduction number, (b) number of individuals in hospital, (c) number of individuals in ICU, (d) total cases, (e) accumulated fatalities.



Supplementary Fig 7. Effect of protective measures at school (for those aged 10 upwards while excluding those younger than 10 years) on the evolution of the epidemic under the assumption of 30% home office. Histories of (a) average reproduction number, (b) individuals in ICU, (c) accumulated fatalities, and (d) fraction of the total population infected. The factor β^* represents the reduction of the probability of transmission at school for those aged 10 upwards. The table insert in (a) denotes the average reproduction number in October 2021. The insert in (c) shows the death toll (fatalities in excess of result for no release) for relaxing the soft lock-down as a function of β^* .



Supplementary Fig 8. Age-group dependent daily probability of death in ICU.