

Supplementary files

Model-based Cellular Kinetic Analysis of Chimeric Antigen Receptor-T Cells in Humans

Can Liu, Vivaswath S. Ayyar, Xirong Zheng, Wenbo Chen, Songmao Zheng, Hardik Mody, Weirong Wang, Donald Heald, Aman P. Singh*, Yanguang Cao*

Table S1. Estimates of model parameters

Figure S1-S6. Model fitting and validation plots in the trial of ALL (Pediatric), ALL (Adult), MM, CLL, NSCLC and GBM.

Figure S7. Individual model-estimated parameters in the distribution phase of DLBCL.

Figure S8. Individual model-estimated persistence duration (T_2) and contraction duration (T_2-T_1).

Figure S9. The correlation between dose and model parameters.

Figure S10. The correlation between pre-treatment tumor burden and model parameters.

Figure S11. The correlation between CD4:CD8 ratio and model parameters.

Figure S12. The correlation between patient age and model parameters.

Figure S13. The effect of lymphodepletion on model parameters.

Figure S14. The effect of lymphodepletion regimen on model parameters.

Figure S15. The correlations among model parameters.

Figure S16. The simulated profiles of 1000 virtual patients for each trial.

Figure S17. The simulated profiles for responders and non-responders

Table S1. Estimates of model parameters

| Indication | C_{\max} (Median, copies / μg DNA) | β (mon^{-1}) | α (mon^{-1}) | r_M (mon^{-1}) | δ_M (mon^{-1}) | β RSE% | β IIV | α RSE% | α IIV | r_M RSE% | r_M IIV | δ_M RSE % | δ_M IIV |
|-----------------|----------------------------------------------------------|----------------------------------|-----------------------------------|--------------------------------|-------------------------------------|-----------------|----------------|------------------|-----------------|---------------|--------------|------------------------|-------------------|
| ALL (Pediatric) | 52,198 | 15.9 | 3.91 | 0.046 | 0.113 | 12.2 | 0.533 | 17.7 | 0.266 | 60.4 | 1.50 | 120 | 0.233 |
| ALL (Adult) | 9,070 | 20.5 | 2.32 | 0.001 | 0.022 | 6.76 | 0.376 | 24.9 | 0.68 | 91.9 | 1.35 | 153 | 2.18 |
| CLL | 4,300 | 7.03 | 1.72 | 0.032 | 0.004 | 33.3 | 1.06 | 54.9 | 0.748 | 79.4 | 0.40 | 237 | 2.81 |
| MM | 20,606 | 13.9 | 3.78 | 0.061 | 0.087 | 8.48 | 0.389 | 22.0 | 0.791 | 46.5 | 1.64 | 50.1 | 1.35 |
| DLBCL | 5,666 | 11.8 | 5.91 | 0.82 | 0.0502 | 6.4 | 0.562 | 12 | 0.706 | 25.2 | 0.938 | 83 | 1.54 |
| NSCLC | 4,818 | 38.4 | 3.49 | 0.263 | 0.0002 | 8.91 | 0.289 | 68 | 0.802 | 126 | 2.44 | 293 | 2.1 |
| GBM | 2,034 | 6.98 | 7.83 | 0.454 | 0.002 | 16.4 | 0.457 | 17 | 0.259 | 28.5 | 0.529 | 483 | 2.46 |

α , contraction rate constant; β , proliferation rate constant; C_{\max} , maximal CAR-T concentration; δ_M , memory death rate constant; IIV, inter-individual variability; r_M , memory differentiation rate constant. RSE, relative standard error.

Figure S1. Model fitting and validation plots in the trial of ALL (Pediatric). (A) Individual fitting plots of representative patients; (B) The goodness-of-fit plot (C) visual predictive check (VPC) plot.

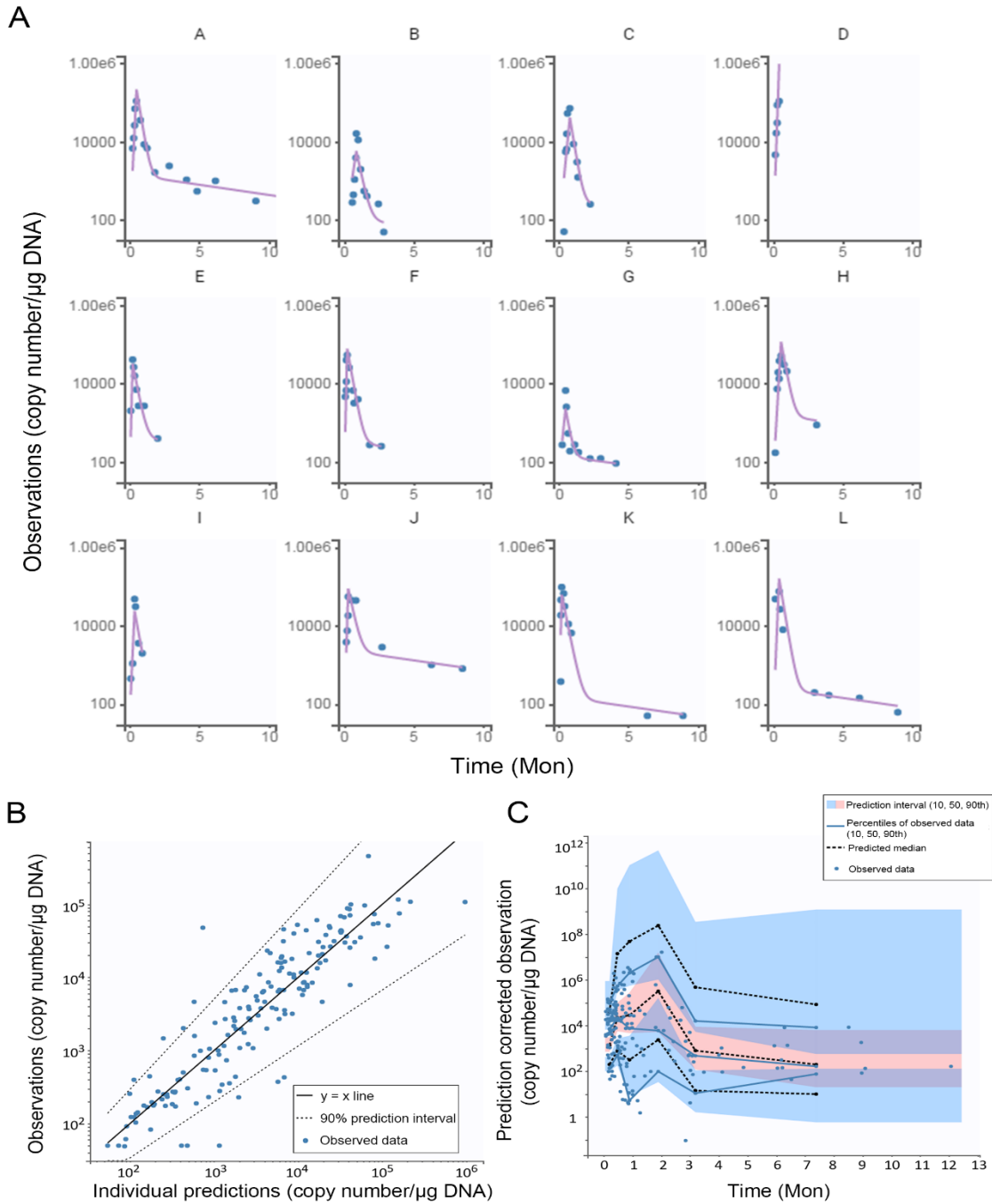


Figure S2. Model fitting and validation plots in the trial of ALL (Adult). (A) Individual fitting plots of representative patients; (B) The goodness-of-fit plot (C) visual predictive check (VPC) plot.

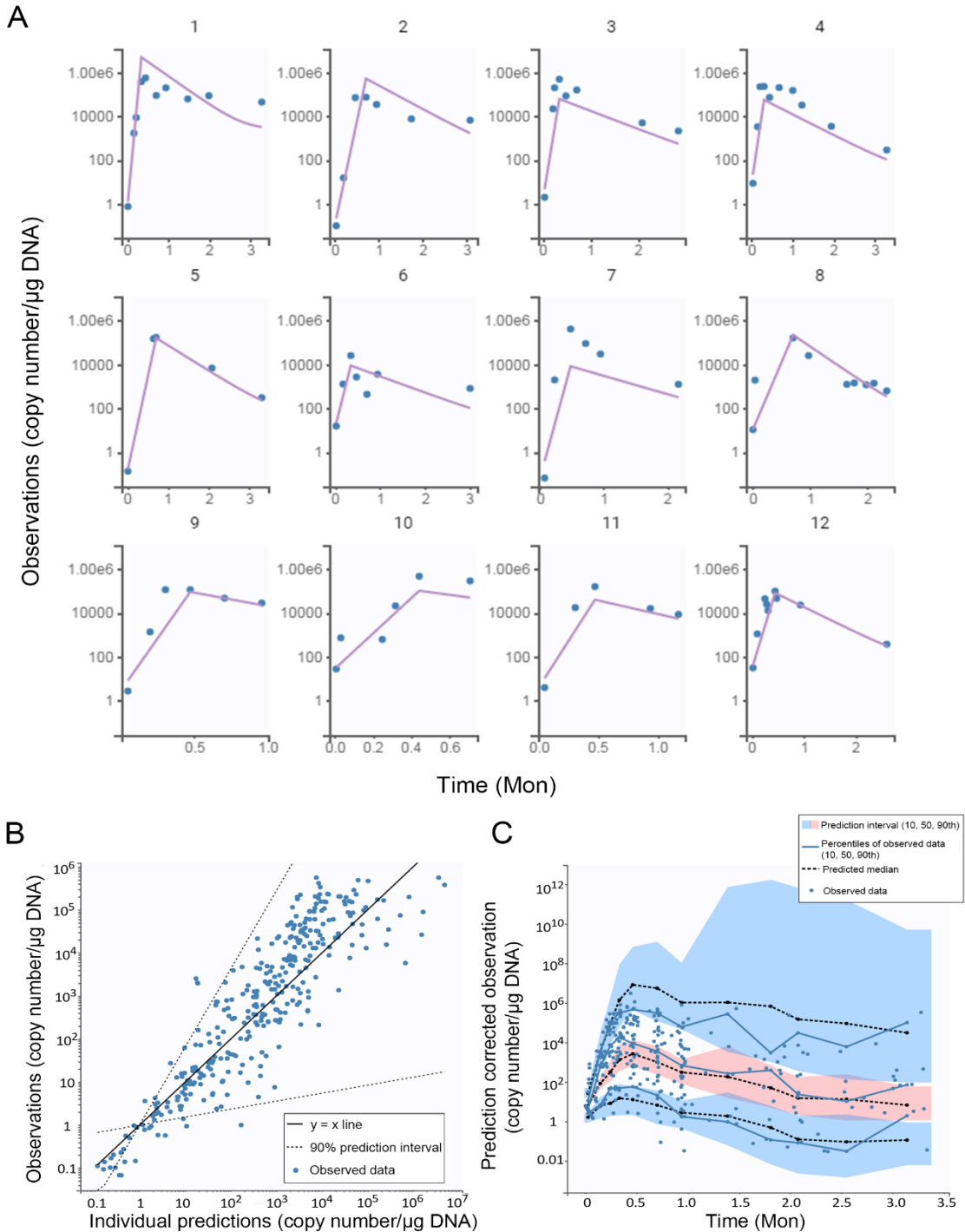


Figure S3. Model fitting and validation plots in the trial of MM. (A) Individual fitting plots of representative patients; (B) The goodness-of-fit plot (C) visual predictive check (VPC) plot.

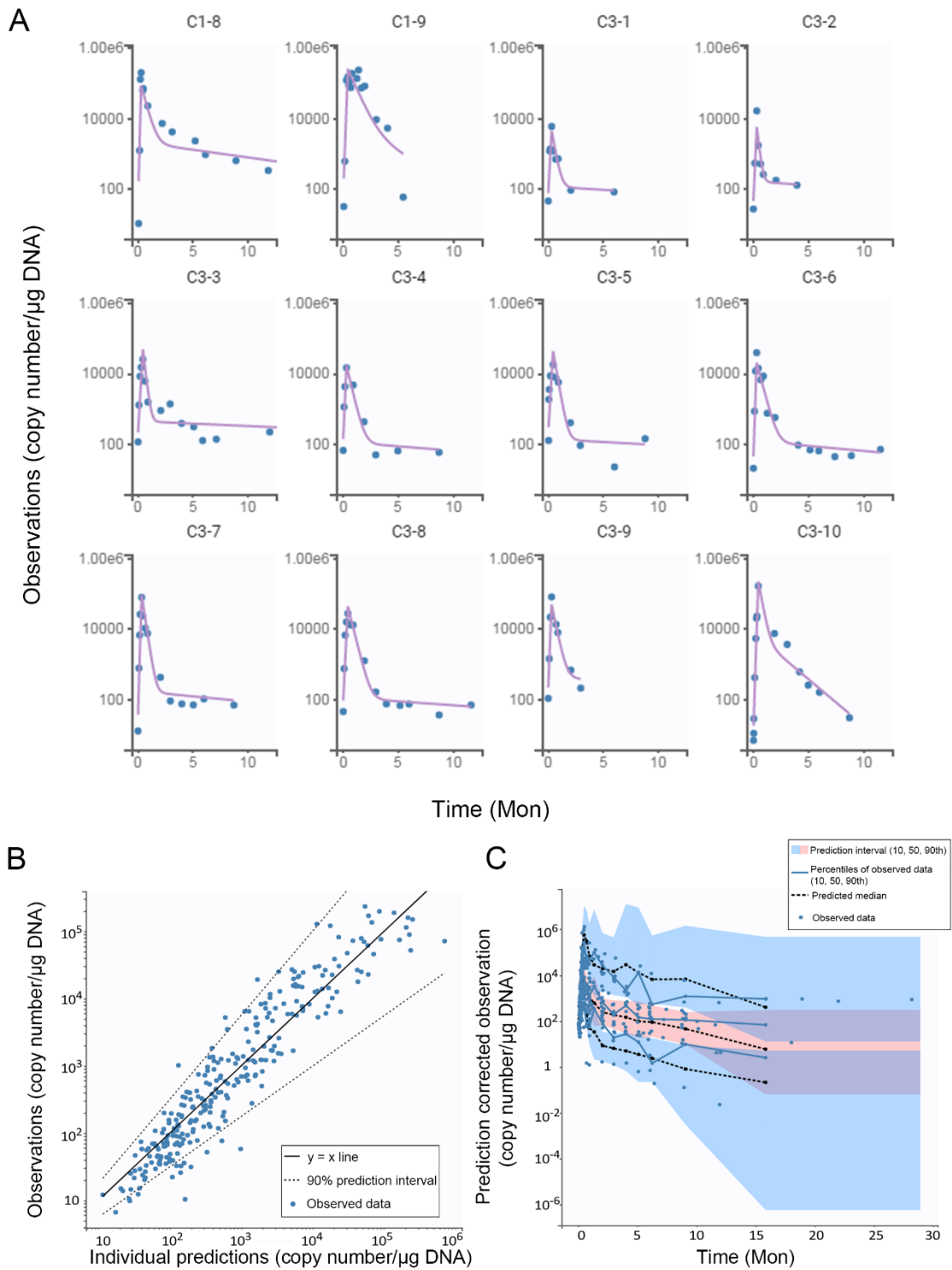


Figure S4. Model fitting and validation plots in the trial of CLL. (A) Individual fitting plots of representative patients; (B) The goodness-of-fit plot (C) visual predictive check (VPC) plot.

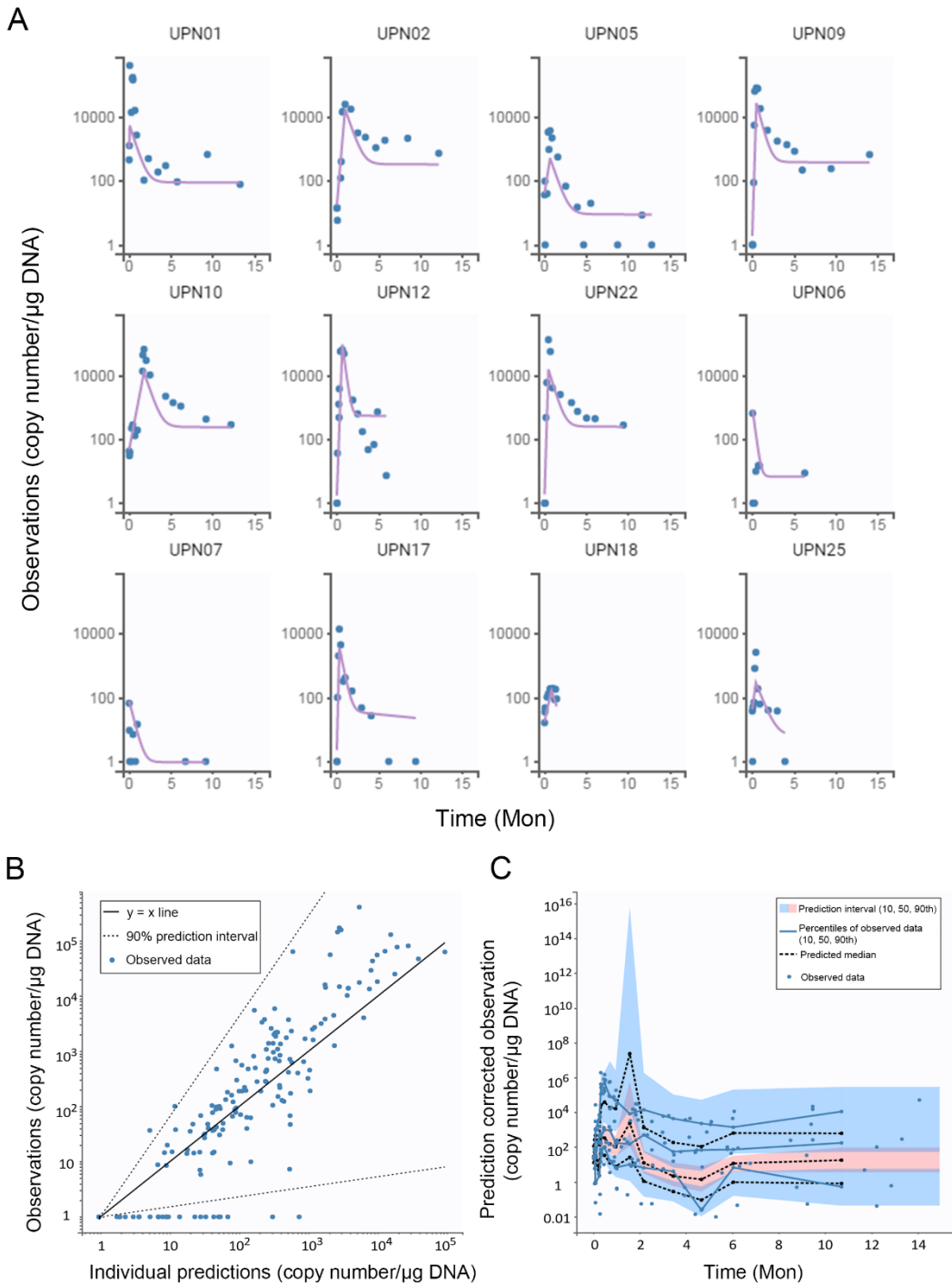


Figure S5. Model fitting and validation plots in the trial of NSCLC. (A) Individual fitting plots of representative patients; (B) The goodness-of-fit plot (C) visual predictive check (VPC) plot.

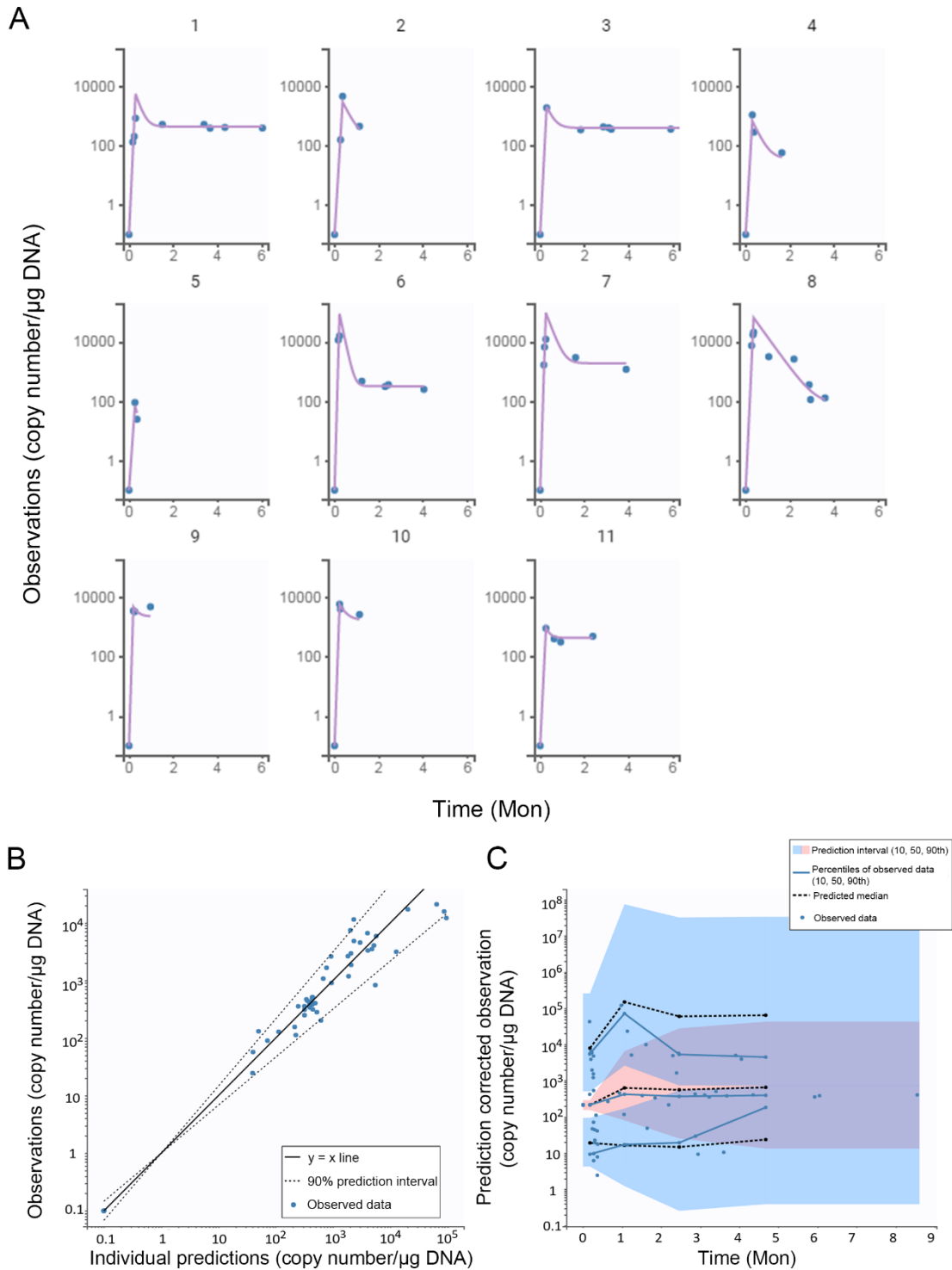


Figure S6. Model fitting and validation plots in the trial of GBM. (A) Individual fitting plots of representative patients; (B) The goodness-of-fit plot (C) visual predictive check (VPC) plot.

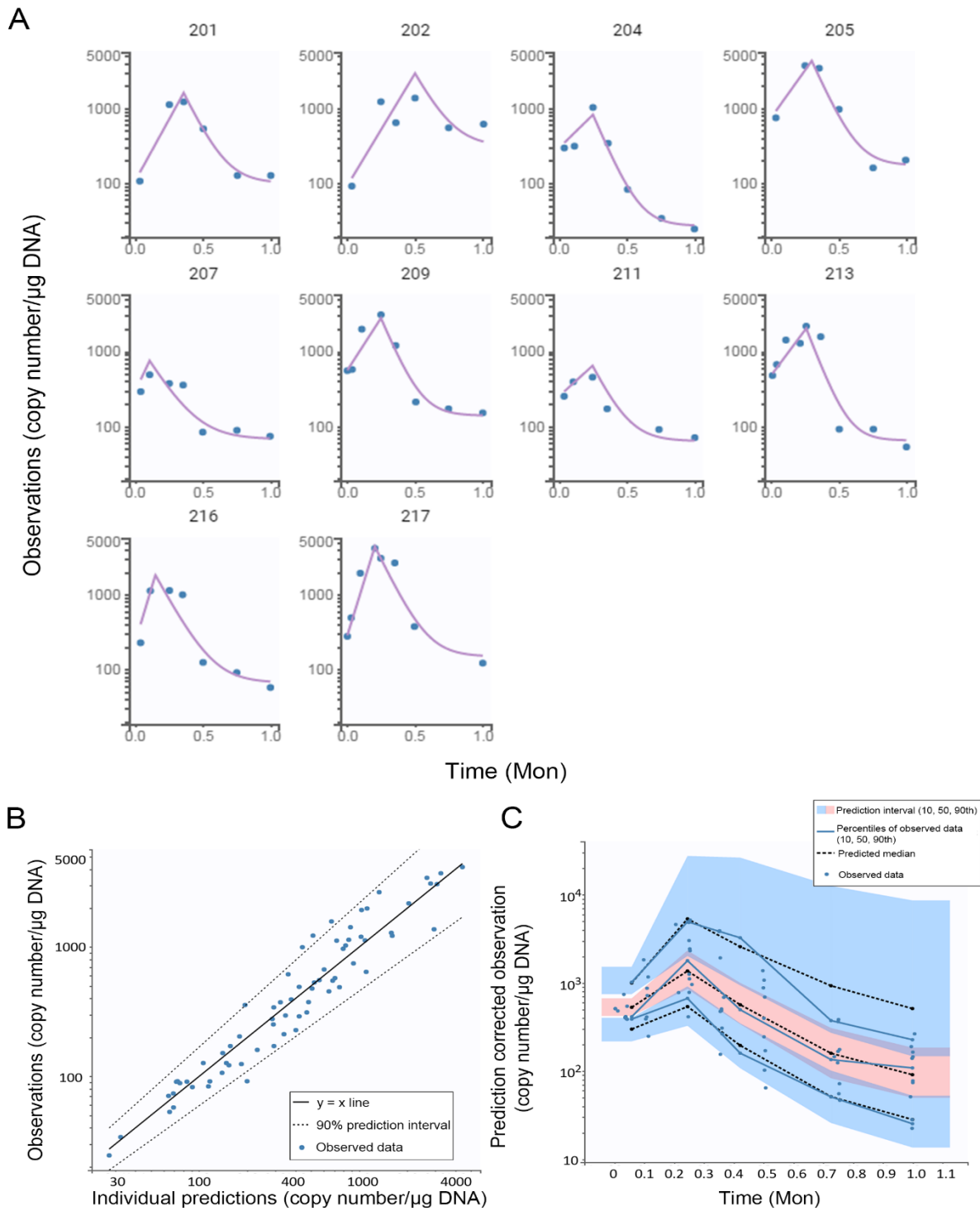


Figure S7. Individual model-estimated parameters for responders (CR/PR) and non-responders (PD/NR) in the distribution phase of DLBCL. (A) Distribution rate constant (k); (B) Distribution duration (T_0). Data distribution was described by boxplot (minimum, first quartile, median, third quartile, and maximum). $p < 0.05$ (Wilcoxon test) is considered as significant difference.

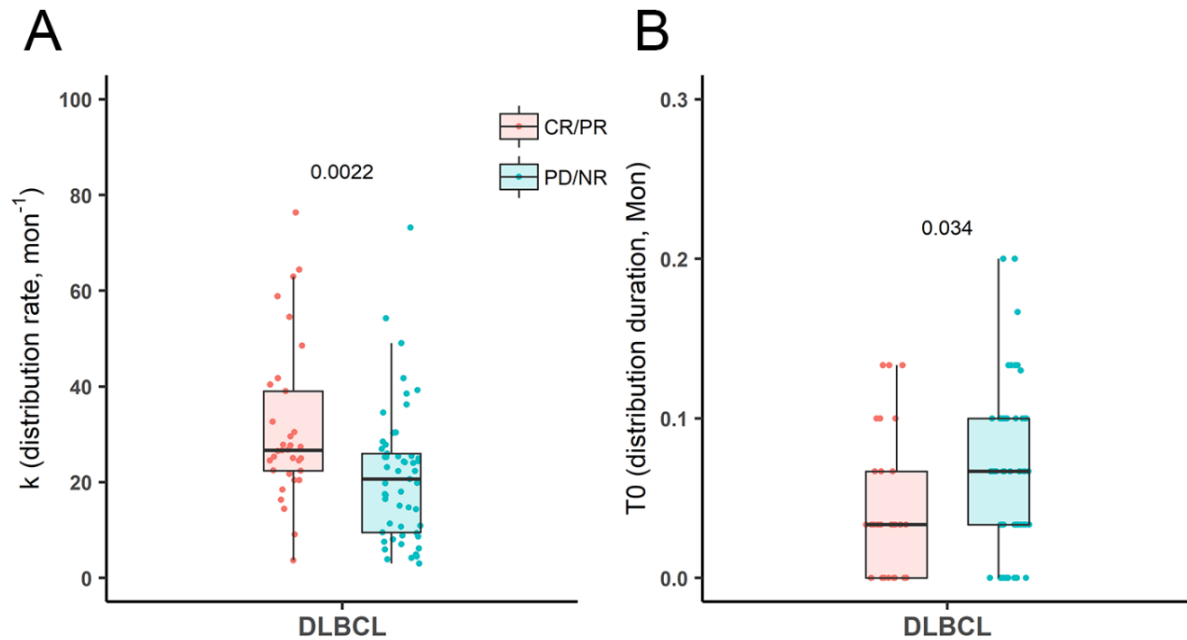


Figure S8. Individual model-estimated parameters for responders (CR/PR) and non-responders (PD/NR). Data from responders and non-responders are shown separately and compared for each trial. (A) Persistence duration (T_2); (B) Contraction duration ($T_2 - T_1$). Data distribution was described by boxplot (minimum, first quartile, median, third quartile, and maximum). $p < 0.05$ (Wilcoxon test) is considered as significant difference.

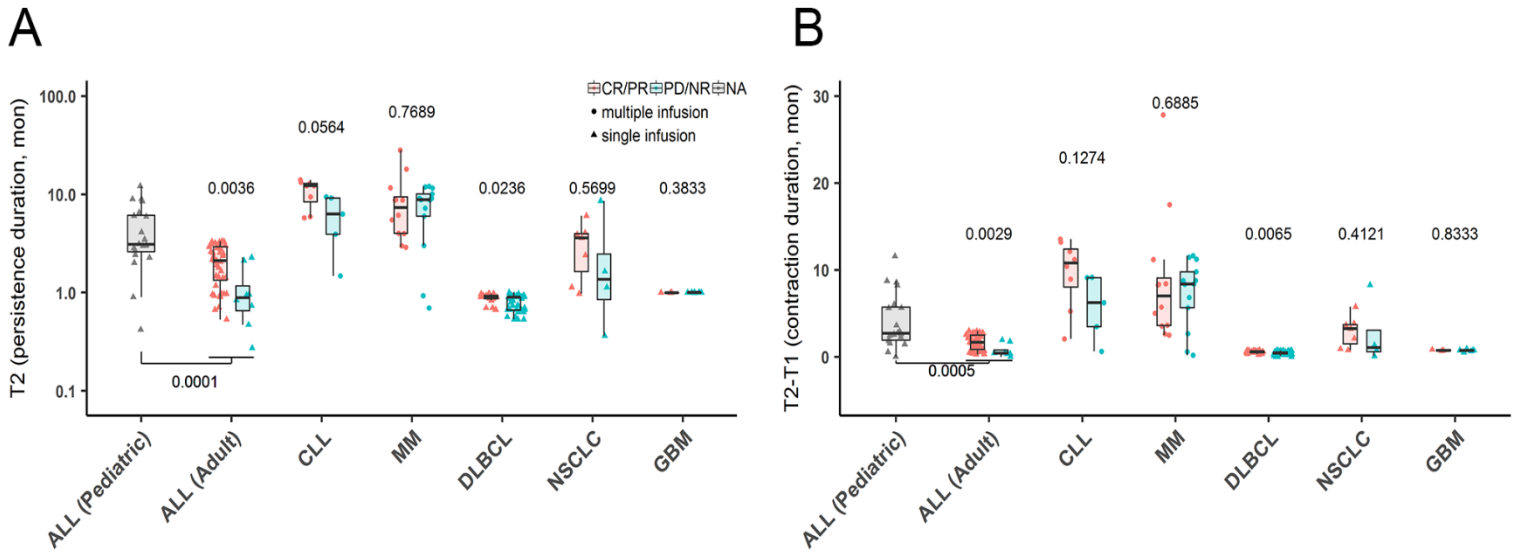


Figure S9. The correlation between dose and model parameters in the trial of MM, CLL, NSCLC and GBM. $p < 0.05$ (Spearman's correlation) is considered as significant.

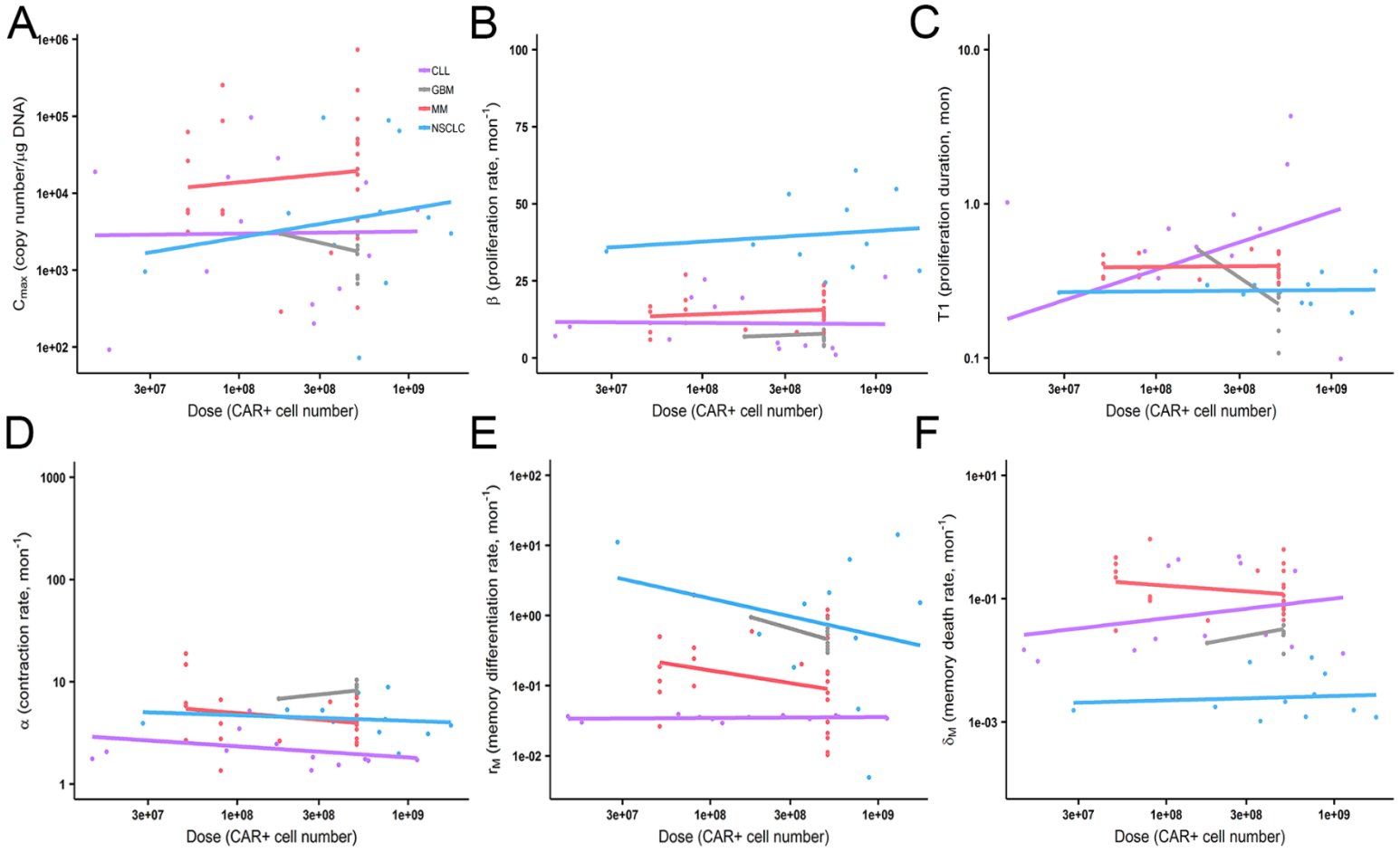


Figure S10. The correlation between pre-treatment tumor burden and model parameters in the trial of MM (A) and CLL (B). $p < 0.05$ (Spearman's correlation) is considered as significant.

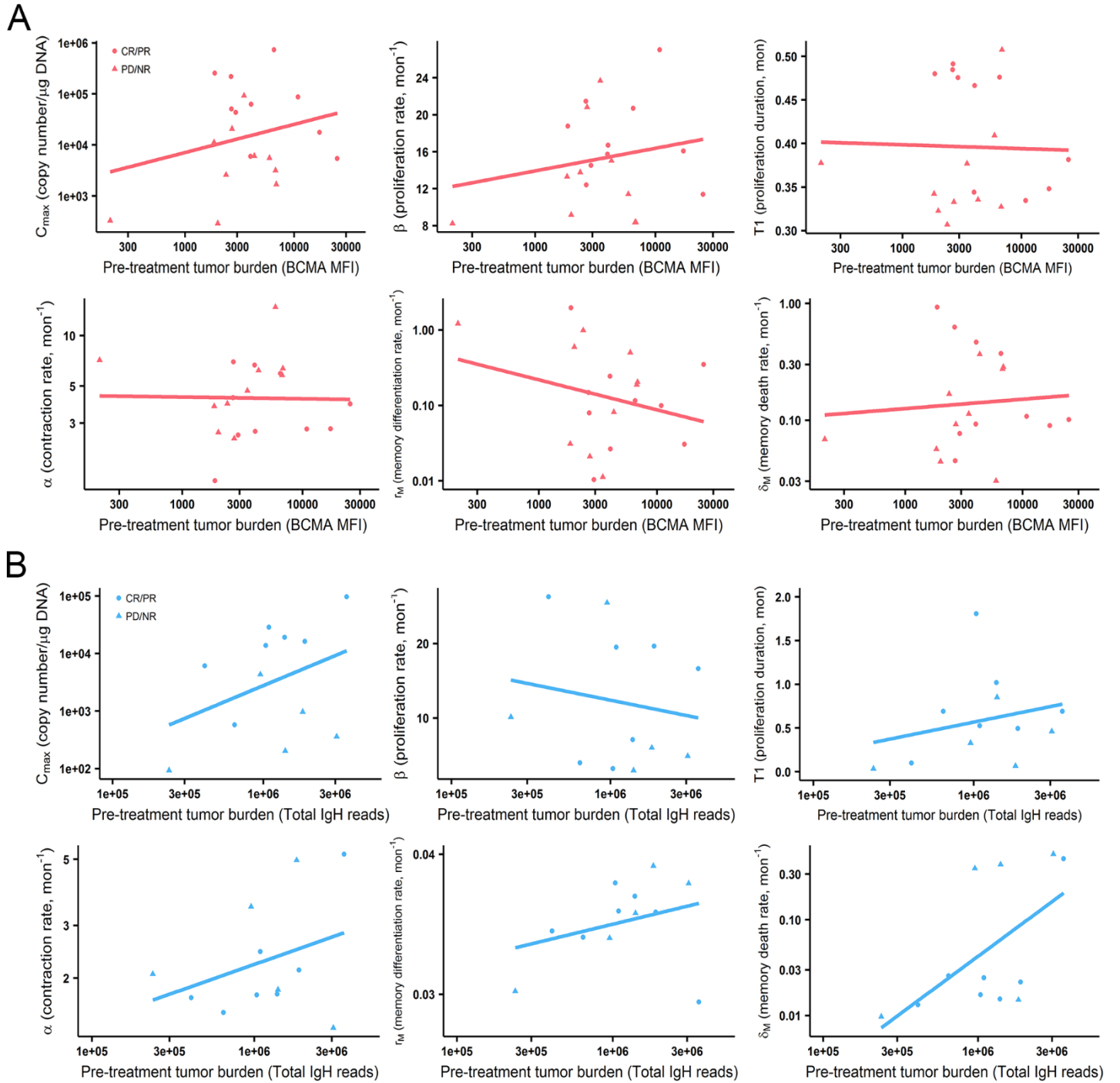


Figure S11. The correlation between CD4:CD8 ratio and model parameters in the trial of MM and NSCLC. $p < 0.05$ (Spearman's correlation) is considered as significant.

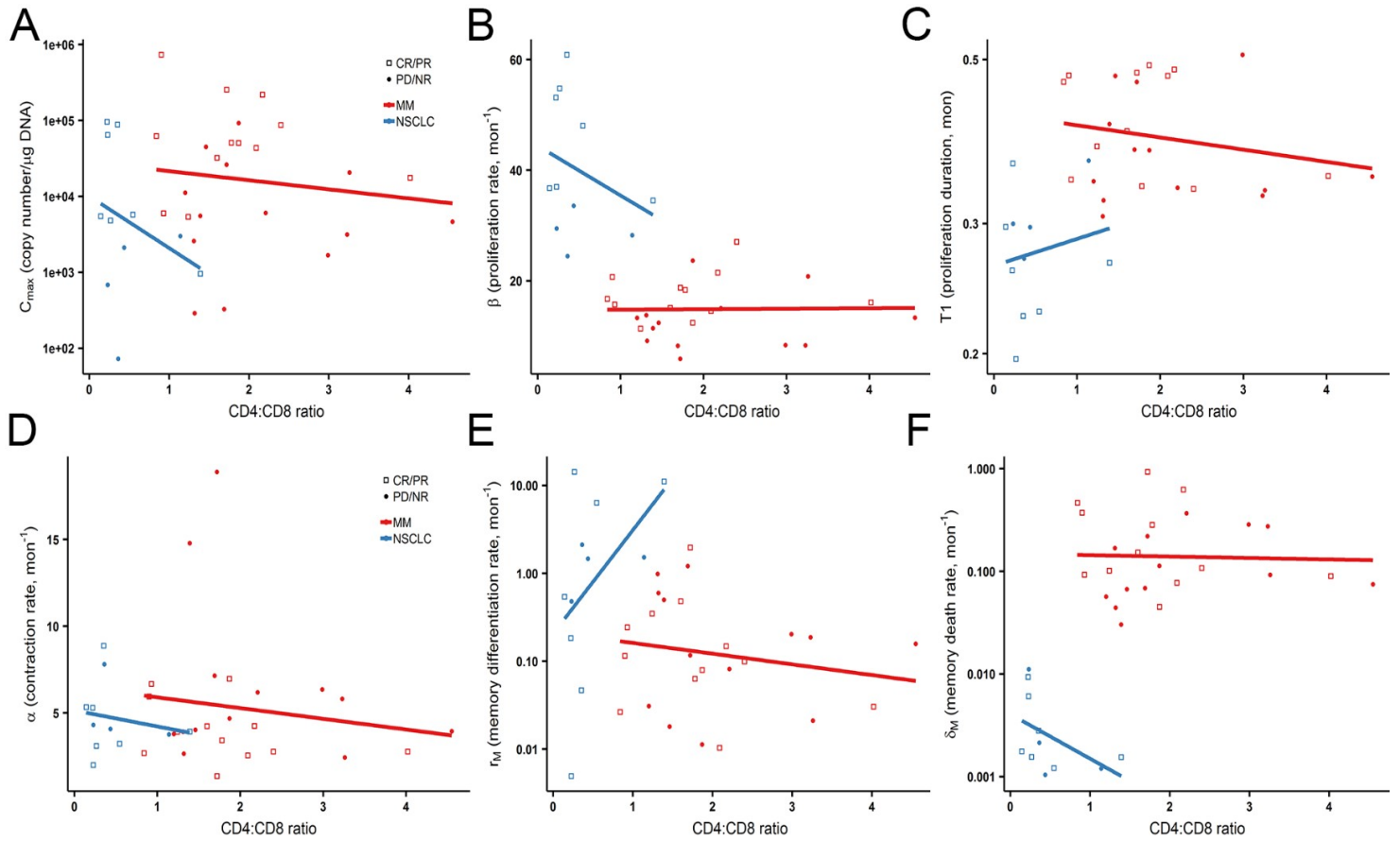


Figure S12. The correlation between patient age and model parameters in the trial of MM, GBM and NSCLC. $p < 0.05$ (Spearman's correlation) is considered as significant.

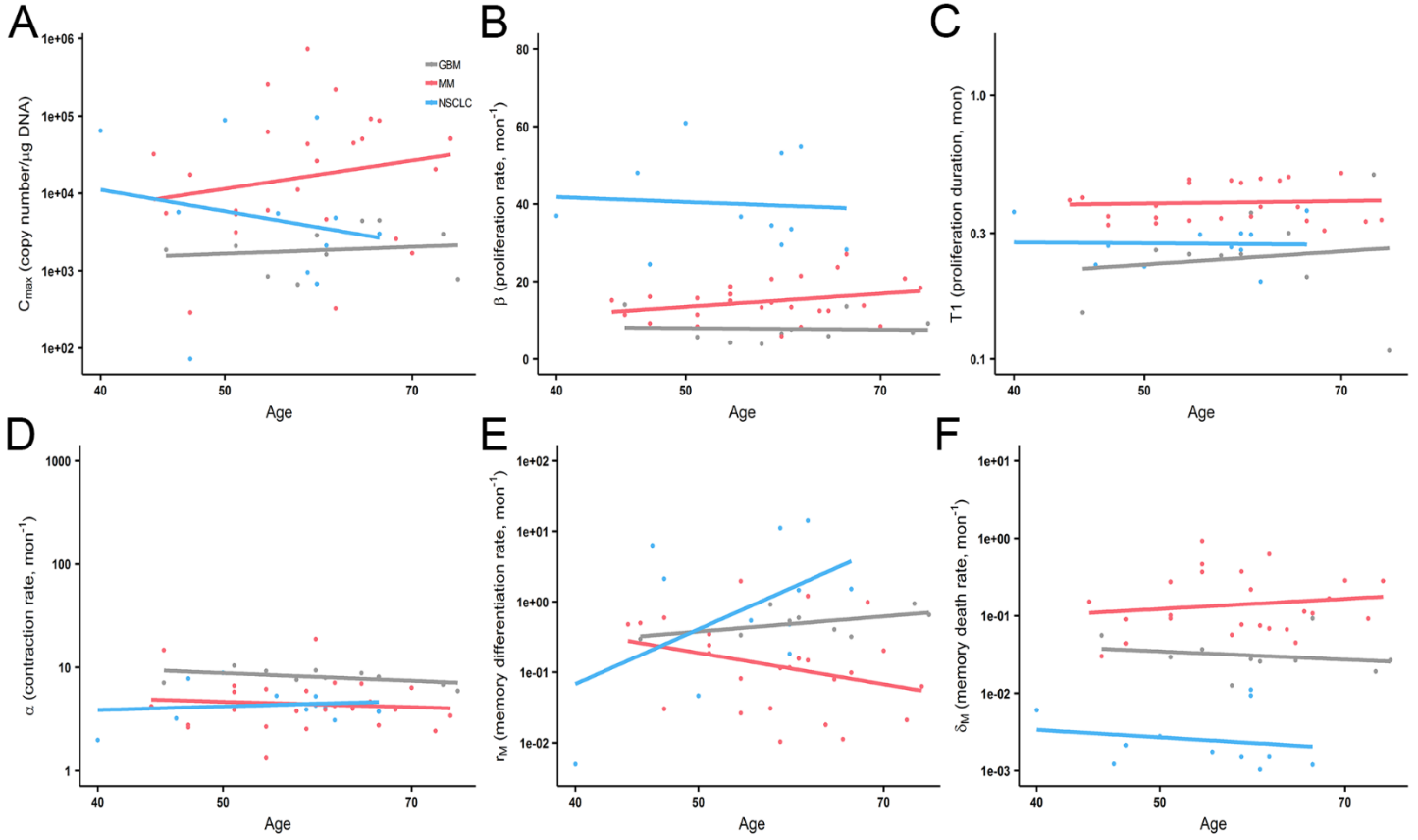


Figure S13. The effect of lymphodepletion on model parameters in the trial of MM and NSCLC. “Yes” indicates patients received lymphodepletion prior to CAR-T infusion; “No” means no patient received lymphodepletion. Data distribution was described by boxplot (minimum, first quartile, median, third quartile, and maximum). $p < 0.05$ (Wilcoxon test) is considered as significant difference.

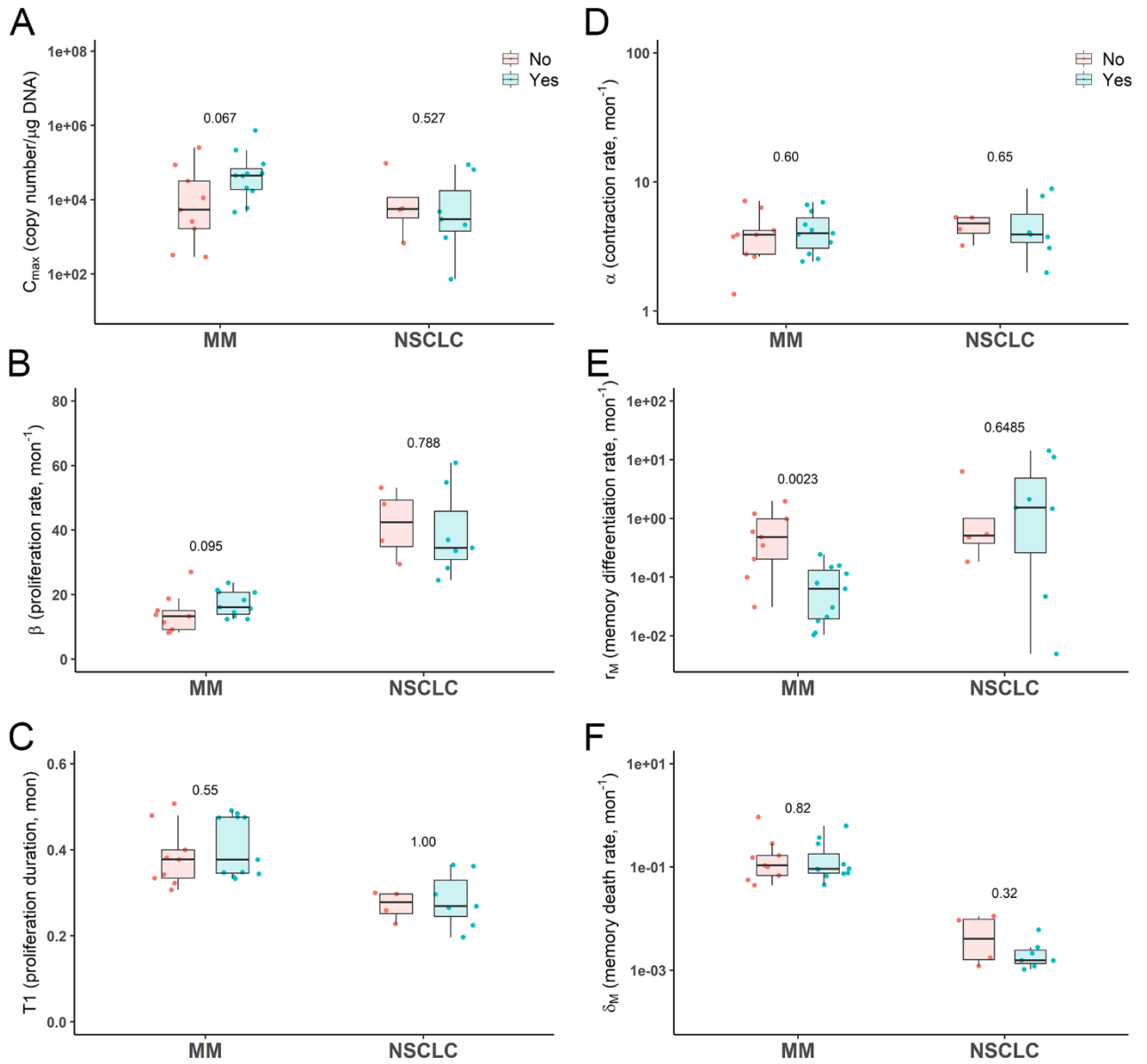


Figure S14. The effect of lymphodepletion regimen on model parameters in the trial of ALL (Adult). “Flu” is short for fludarabine, which indicates patients received cyclophosphamide-based lymphodepletion with fludarabine. “No Flu” indicates patients received cyclophosphamide-based lymphodepletion without fludarabine. Data distribution was described by boxplot (minimum, first quartile, median, third quartile, and maximum). $p < 0.05$ (Wilcoxon test) is considered as significant difference.

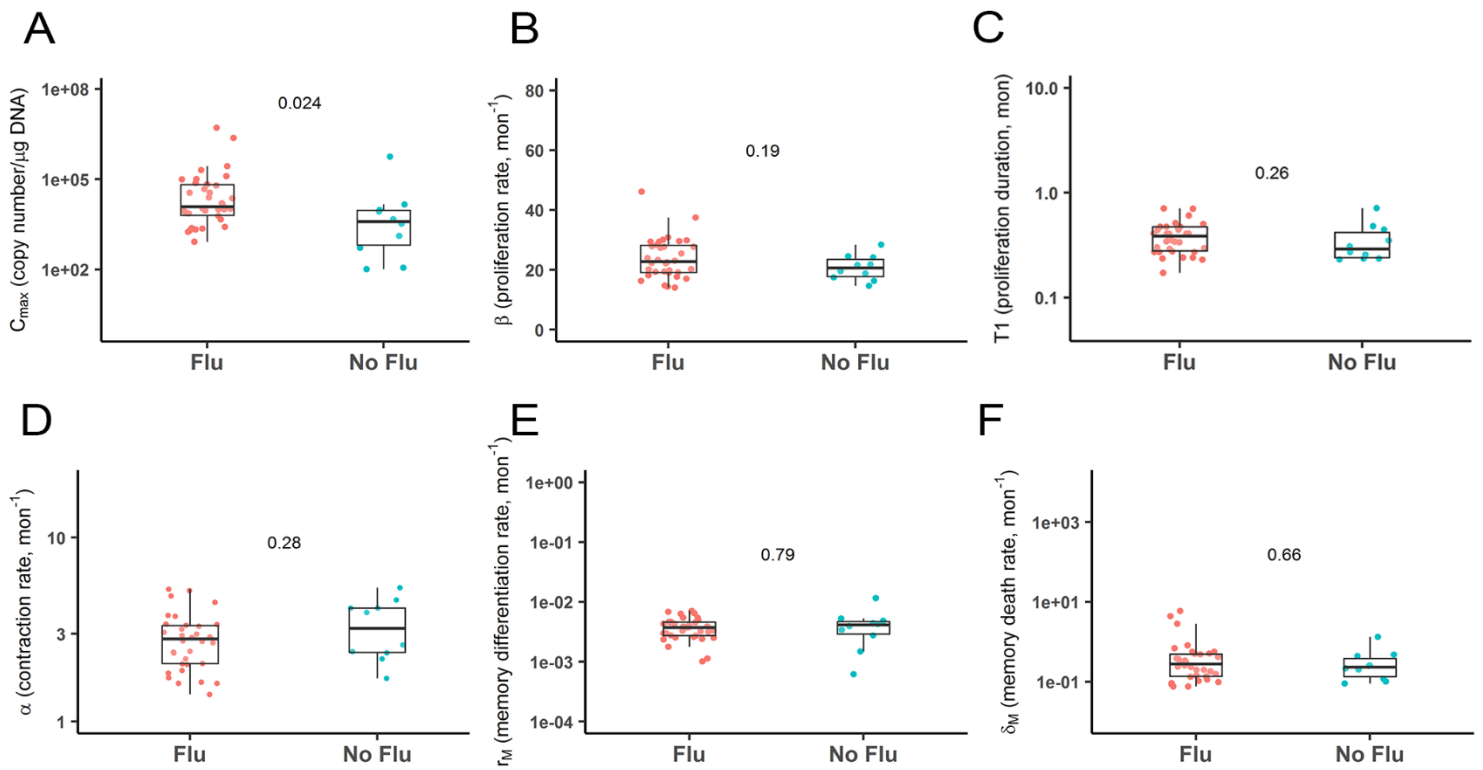


Figure S15. The correlations among model parameters. (A) C_{\max} showed positive correlation with β in overall, significance was observed in the trial of MM, DLBCL and NSCLC; (B) C_{\max} showed positive correlation with T_1 in overall, significance was observed in the trial of MM and ALL (Adult); (C) β showed significant negative correlation with T_1 , except the trial of MM and GBM; (D) α showed mild negative correlation with β in overall, significance was observed in the trial of MM and ALL (Adult); (E) no obvious correlation between C_{\max} and α ; (F) r_M showed negative correlation with δ_M in overall, significance was observed in the trial of ALL (Pediatric), DLBCL, NSCLC and GBM; (G) r_M showed negative correlation with α in most trials, significance was observed in the trial of ALL (Adult) and DLBCL; (H) r_M showed negative correlation with C_{\max} in overall, significance was observed in the trial of ALL (Pediatric) and MM.

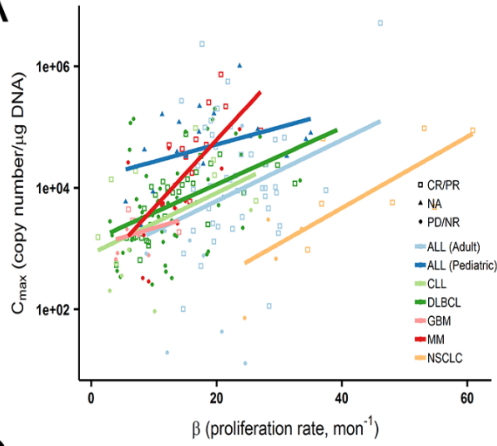
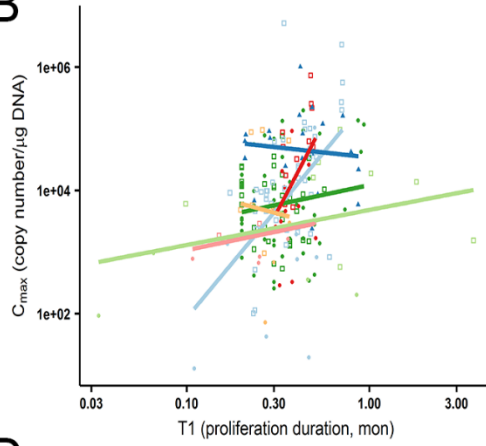
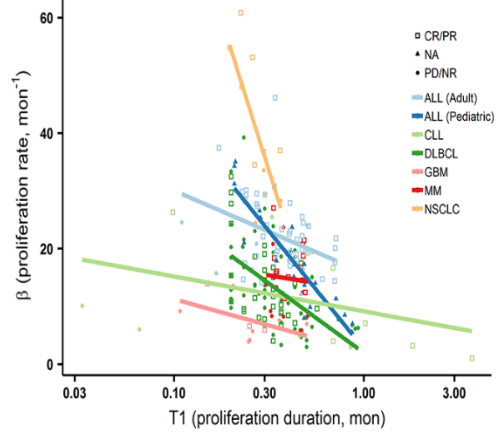
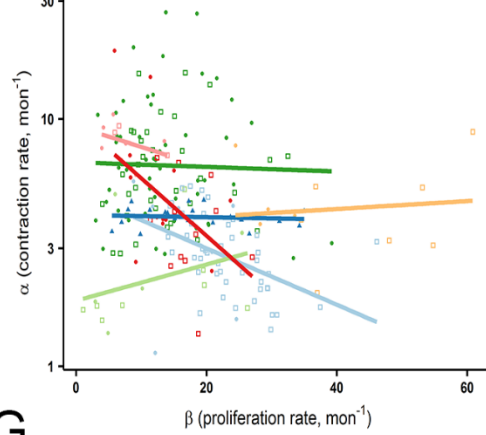
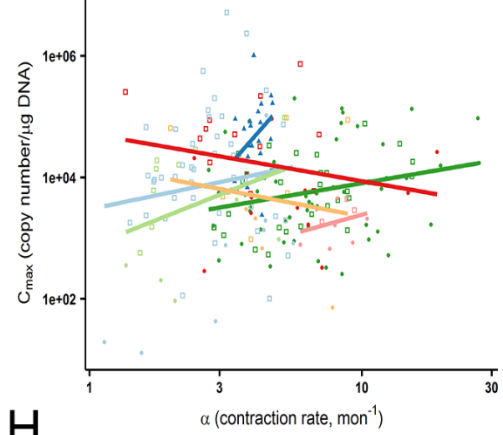
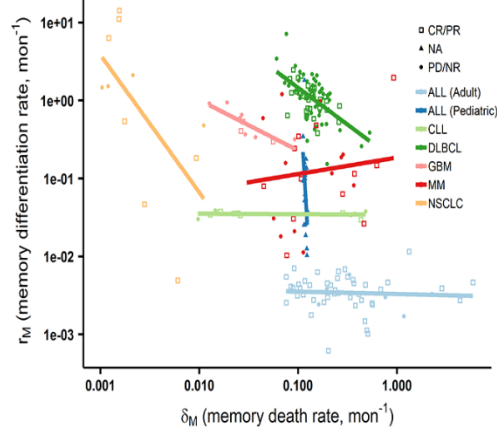
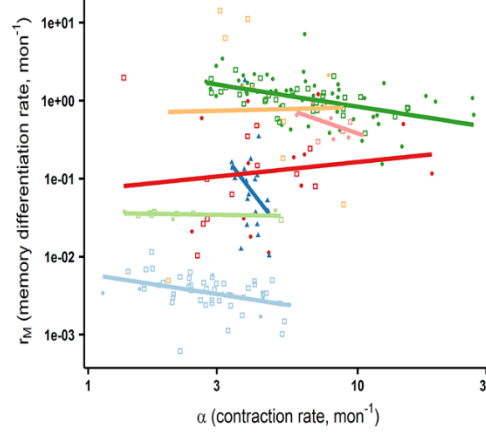
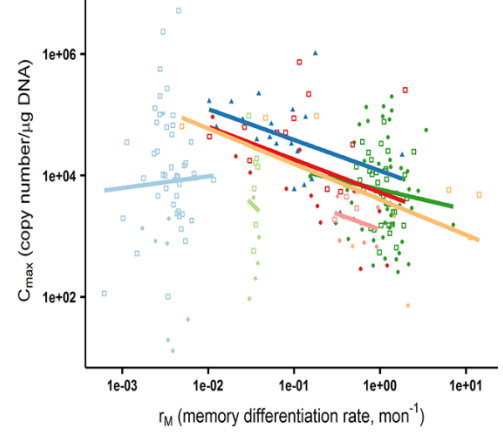
A**B****C****D****E****F****G****H**

Figure S16. The simulated CAR-T kinetics of 1000 virtual patients for each trial. Simulations were performed based on population value of parameters with inter-individual variability. Solid red lines are the predicted median, the area between dashed red lines depict the 10th-90th percentile population prediction interval.

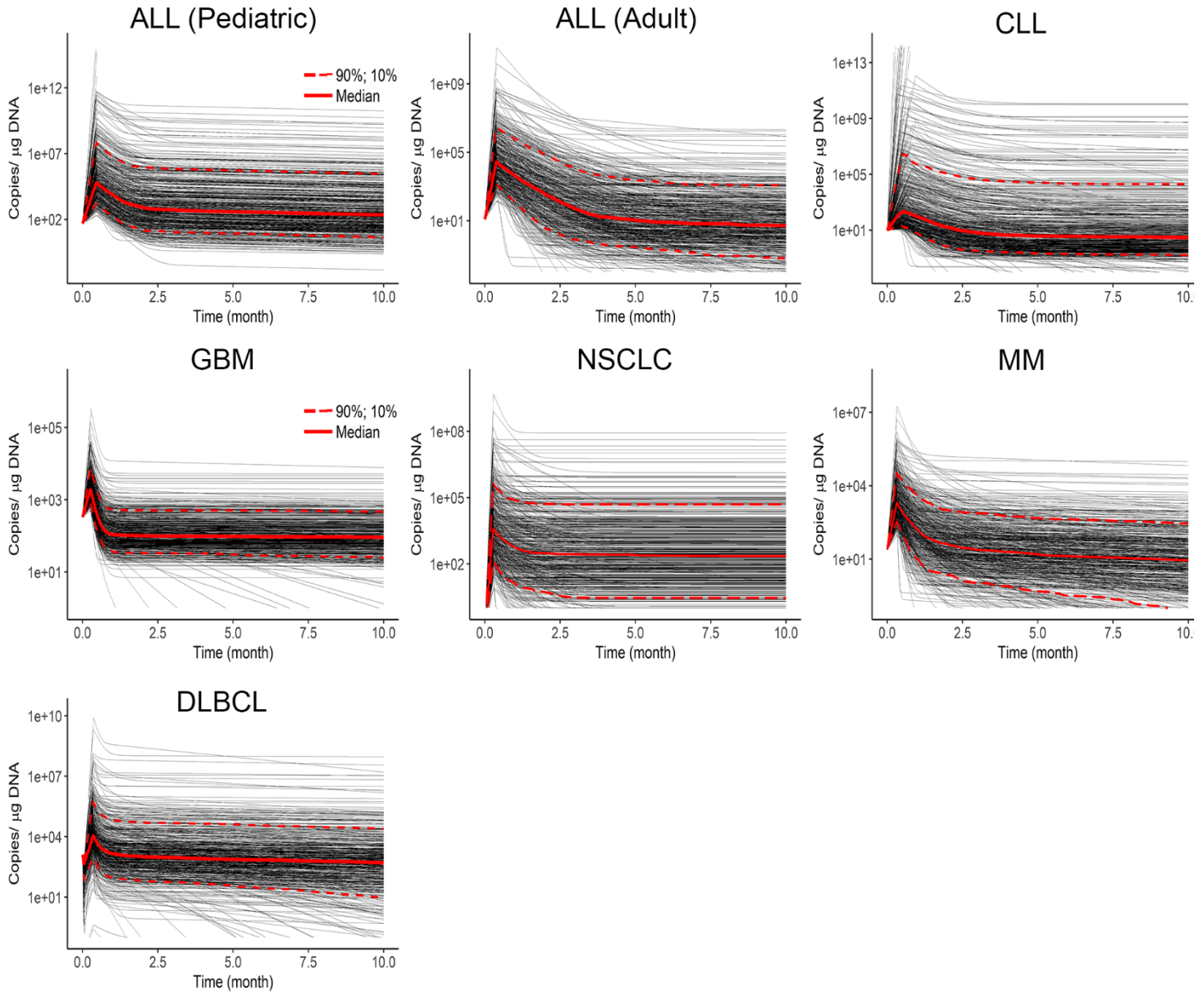
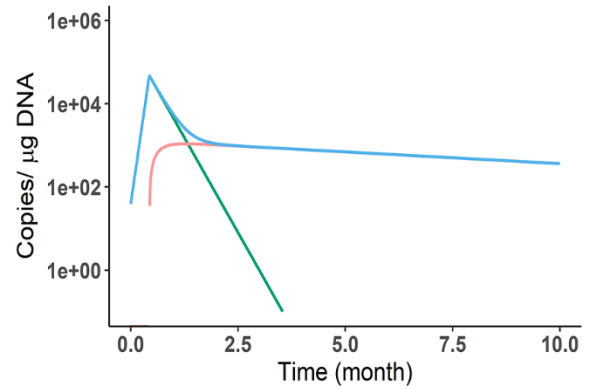
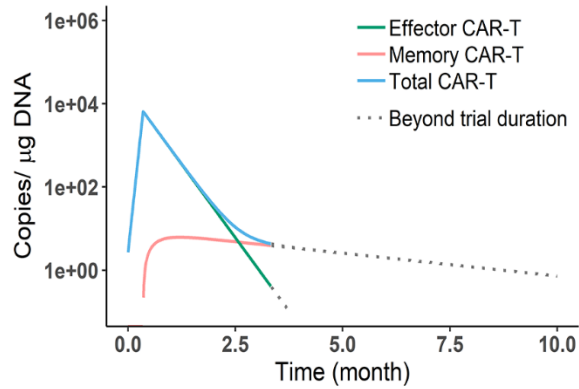
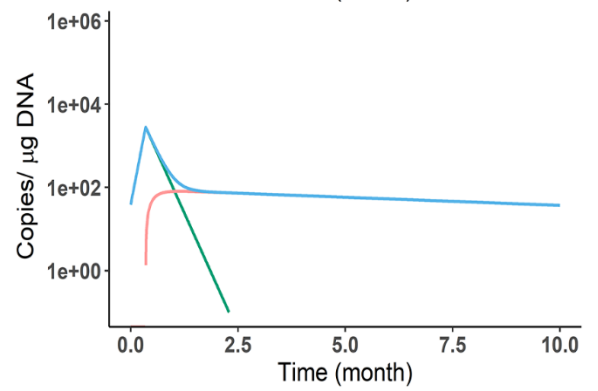
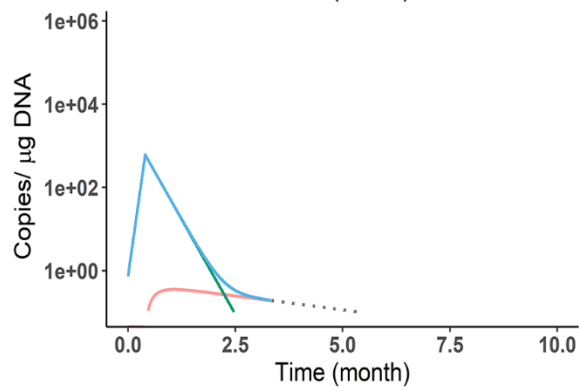


Figure S17. (A) The simulated kinetics for responders (CR/PR) and non-responders (PD/NR) in the trial of ALL (Adult) and MM. Simulations were performed based on population value of parameters. Green, red and blue lines stand for effector CAR-T, memory CAR-T and total CAR-T, respectively. (B) The simulated kinetics of 1000 virtual patients for the trial of ALL (Adult). The kinetics of total CAR-T, effector CAR-T and memory CAR-T were simulated respectively. Simulations were performed based on population value of parameters with inter-individual variability. Solid red lines are the predicted median, the area between dashed red lines depict the 10th–90th percentile population prediction interval.

A**ALL (Adult)****MM****CR/PR****PD/NR****B**