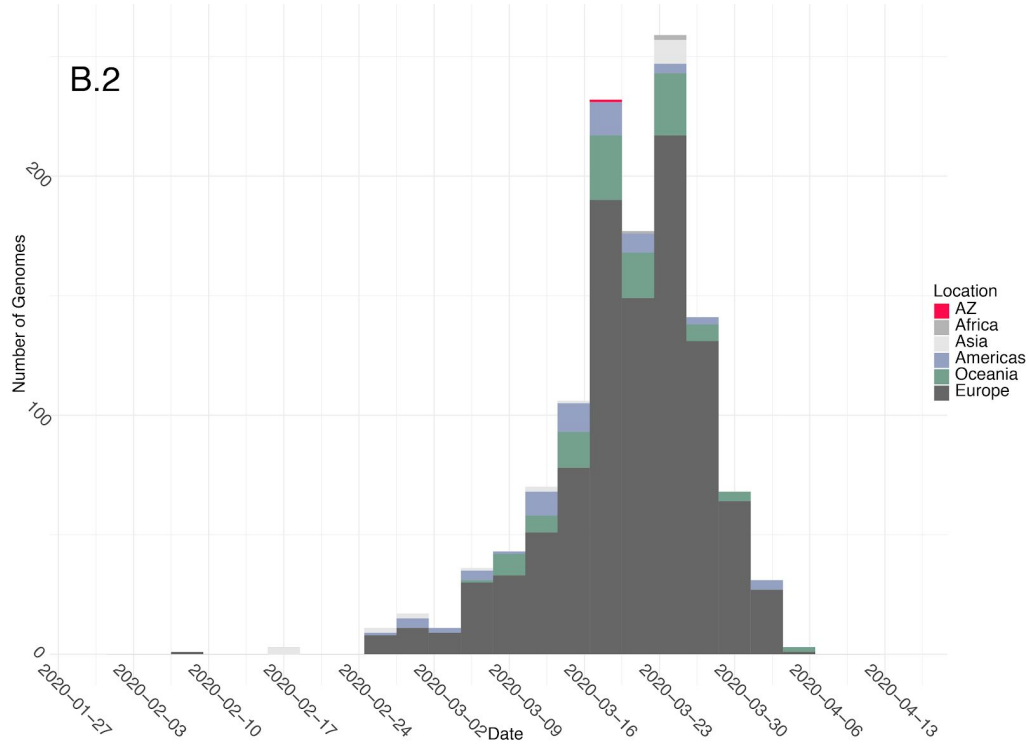
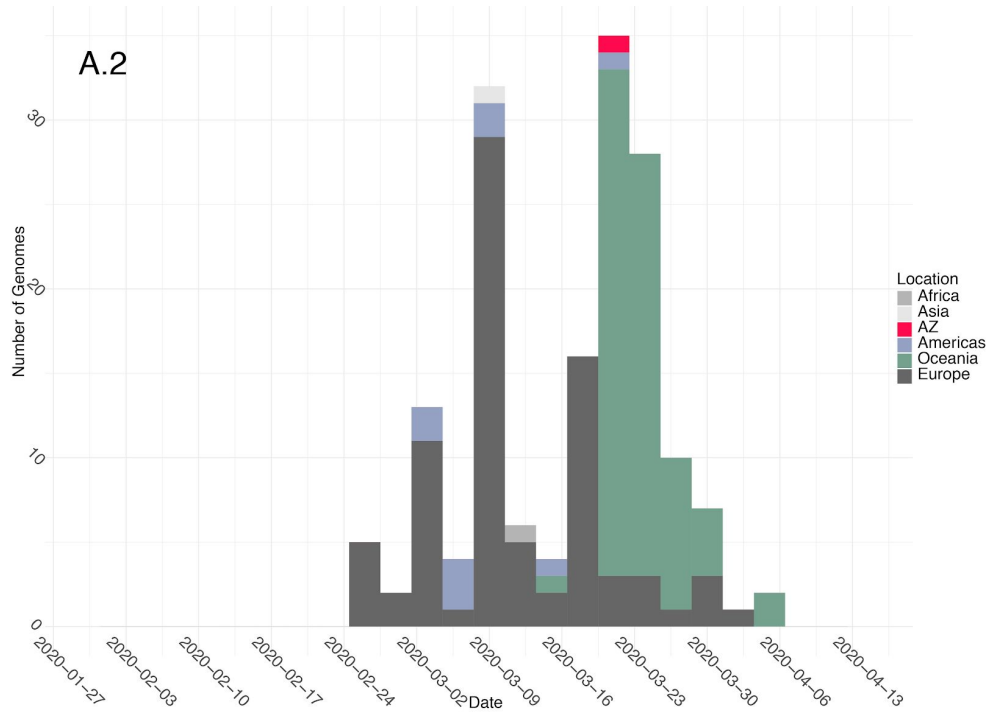
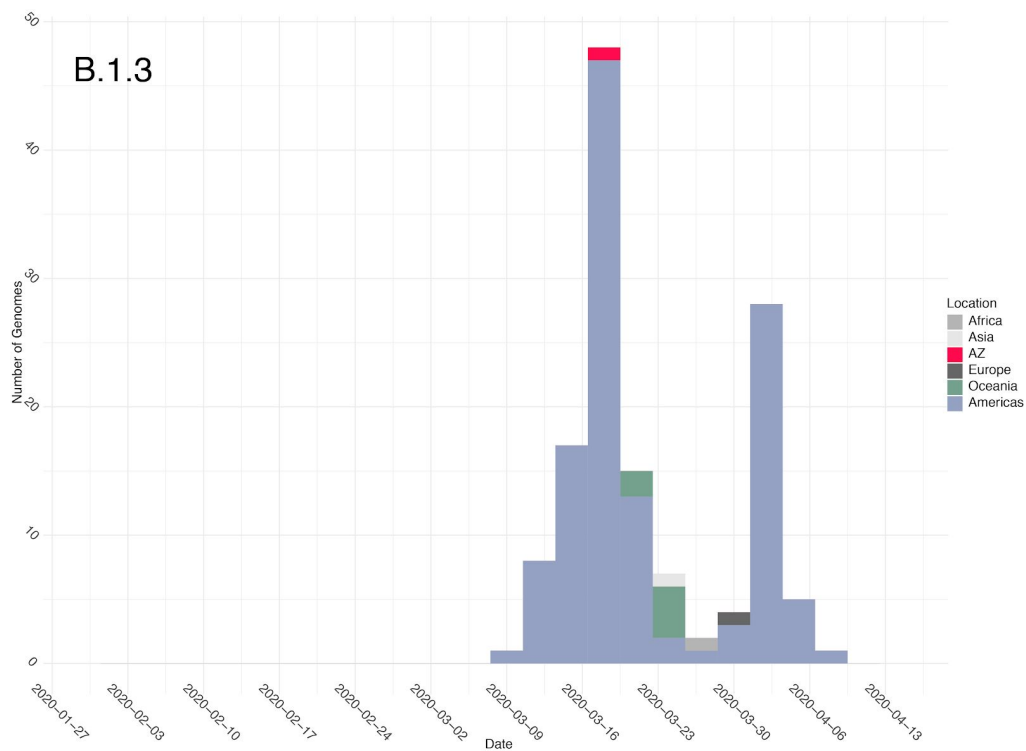
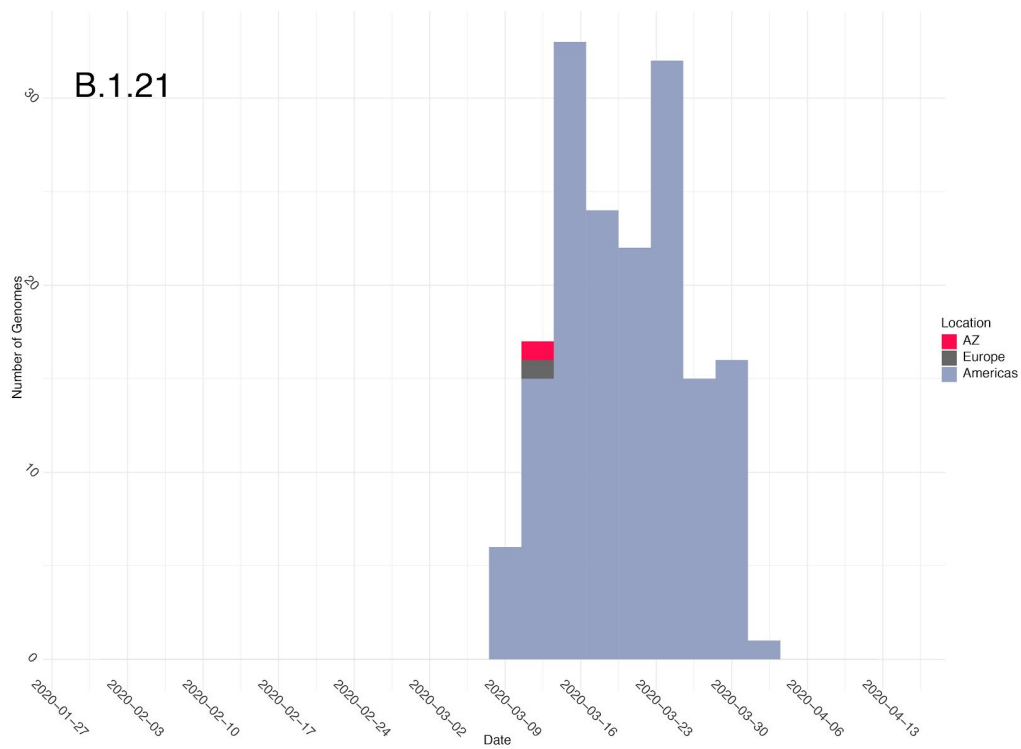


Supplementary Figure 1. Maximum-likelihood phylogeny inferred from 384 SARS-CoV-2 genomes, including 80 from Arizona and 304 representatives from around the world. Tips are colored by origin of sequence, and major lineages assigned by Pangolin, with more than 2 sequence representatives in Arizona, are labeled and indicated by black vertical bars. Orange vertical bars indicate well-supported (Bayesian posterior >0.99 and bootstrap support ≥ 65) sublineages of B.1, which were not uniquely named by Pangolin. The existence of these sublineages, with members from around the world, strongly supports the fact that the “B.1” lineage was introduced to Arizona multiple times. The tree was visualized with a custom Python script that utilized the software package BALTIC (<https://github.com/evogytis/baltic>).





Supplementary Figure 2. Sequence database representation through time for the 4 introductions with only 1 sequence representative from Arizona. Stacked bars are colored according to location. Lineages were assigned using Pangolin for all sequences uploaded to GISAID as of 4/16/2020.

Supplementary Table 3. Genome representation from each Arizona county. This does not include all genomes because some are from unknown counties.

County	Number of positive cases*	Number of genomes sequenced
Apache	118	0
Cochise	18	1
Coconino	299	22
Gila	5	0
Graham	2	1
Greenlee	2	0
La Paz	5	1
Maricopa	2,264	31
Mohave	51	1
Navajo	410	4
Pima	760	4
Pinal	197	7
Santa Cruz	14	0
Yavapai	68	3
Yuma	21	1
Totals	4234	76
* As of 4/16/2020		

Supplementary Table 4. In silico screen of commonly used primers/probes to detect SARS-CoV-2.

Assay	Forward	Reverse	Probe	Total	Hits	Misses	Ambiguities
Orf1ab	CCCTGTGGGTTTT ACACTTAA	ACGATTGTGCAT CAGCTGA	CCGTCTGCGGTATG TGGAAAGGTTATGG	384	366	0	18
N (China)	GGGGAACCTTCTCC TGCTAGAAT	CAGACATTTTGTCT CTCAAGCTG	TTGCTGCTGCTTGA CAGATT	384	324	57	3
n_cov_ n1	GACCCCAAATCA GCGAAAT	TCTGGTTACTGC CAGTTGAAT	ACCCCGCATTACGT TTGGTGGACC	384	375	6	3
n_cov_ n2	TTACAAACATTGG CCGCAA	GCGCGACATTCC GAAGAA	ACAATTTGCCCCA GCGCTTCAG	384	382	0	2
n_cov_ n3	GGGAGCCTTGAAT ACACCAAAA	TGTAGCACGATT GCAGCATTG	AYCACATTGGCACC CGCAATCCTG	384	382	0	2
E (Sarbeco)	ACAGGTACGTAA TAGTTAATAGCGT	ATATTGCAGCAG TACGCACACA	ACACTAGCCATCCT TACTGCGCTTCG	384	380	2	2
nsp10 (China)	CCCTGTGGGTTTT ACACTTAA	ACGATTGTGCAT CAGCTGA	CCGTCTGCGGTATG TGGAAAGGTTATGG	384	366	0	18
nsp14	TAATCAGACAAGG AACTGATTA	CGAAGGTGTGAC TTCCATG	GCAAATTGTGCAAT TTGCGG	384	380	2	2
N (HKU)	TAATCAGACAAGGAA CTGATTA	CGAAGGTGTGACT TCCATG	GCAAATTGTGCAATTT GCGG	384	379	2	3
nsp14 (HKU)	TGGGGYTTTACRGGT AACCT	AACRCGCTTAACAA AGCACTC	TAGTTGTGATGCWATC ATGACTAG	384	381	0	3
RdRp (IP2)	ATGAGCTTAGTCC TGTTG	CTCCCTTTGTTGT GTTGT	AGATGTCTTGTGCT GCCGGTA	383	383	0	1
RDRP (IP4)	GGTAACTGGTATG ATTTTCG	CTGGTCAAGGTT AATATAGG	TCATACAAACCACG CCAGG	384	384	0	0