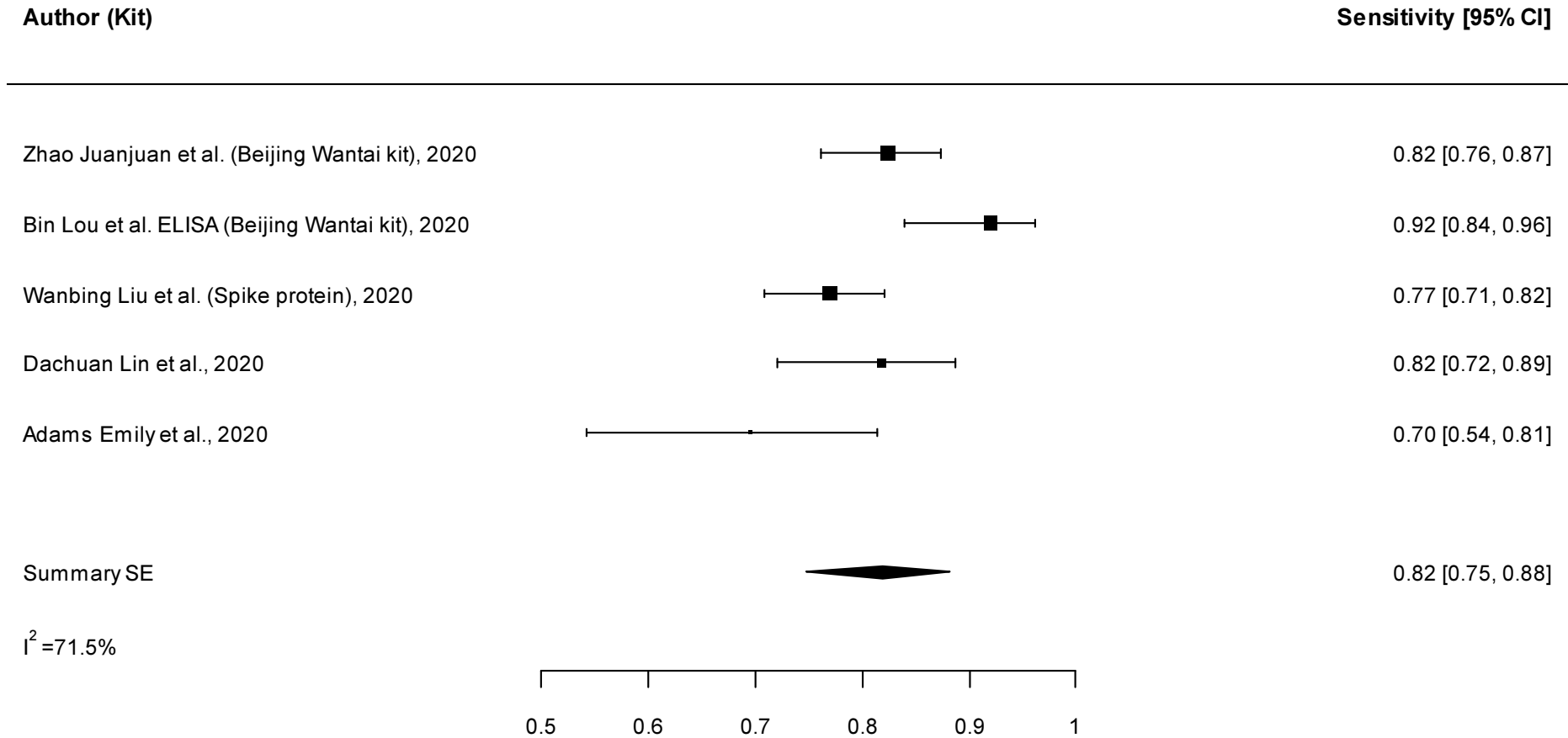


eTable 1. Methods of reference to identify true positives and true negatives.

Test name	Identification of positive subjects	Identification of negative subjects
Lou et al. [4]	SARS-CoV-2 through real-time RT-PCR (rRT-PCR) testing.	SARS-CoV-2 through real-time RT-PCR (rRT-PCR) testing.
Lin et al [5]	Combinations of epidemiological risk factors, clinical features and positive detections of SARS-CoV-2 RNA in respiratory specimens	Combination of epidemiological risks, and persistently negative for SARS-CoV-2 RNA detections in at least three respiratory specimens' tests.
Liu et al. [6]	SARS-CoV-2 through real-time RT-PCR (rRT-PCR) testing at a median of 15 d.p.o. (range. 0–55 days).	Serum samples from 100 healthy blood donors.
Zhao et al. [7]	SARS-CoV-2 by use of real-time RT-PCR (rRT-PCR)	Samples collected from healthy individuals before the outbreak of SARS-CoV-2.
Creative Diagnostics [8]	SARS-CoV-2 by use of real-time RT-PCR (rRT-PCR) after the second week of the onset of the disease.	Normal healthy patients with samples collected prior to the SARS-COV-2 outbreak.
Epitope Diagnostic [9]	SARS-CoV-2 by use of real-time RT-PCR (rRT-PCR) after the second week of the onset of the disease.	Normal healthy patients with samples collected prior to the COVID outbreak.
Lassaunière et al. [10]	SARS-CoV-2 by use of real-time RT-PCR (rRT-PCR)	Samples collected from healthy individuals before the outbreak of SARS-CoV-2.
Ortho-Clinical Diagnostics [11]	SARS-CoV-2 by use of real-time RT-PCR (rRT-PCR)	400 presumed SARS-CoV-2 negative samples from healthy blood donors were tested.
Adams et al. [12]	SARS-CoV-2 through real-time RT-PCR (rRT-PCR)	Plasma samples collected from healthy individuals before the outbreak of SARS-CoV-2.

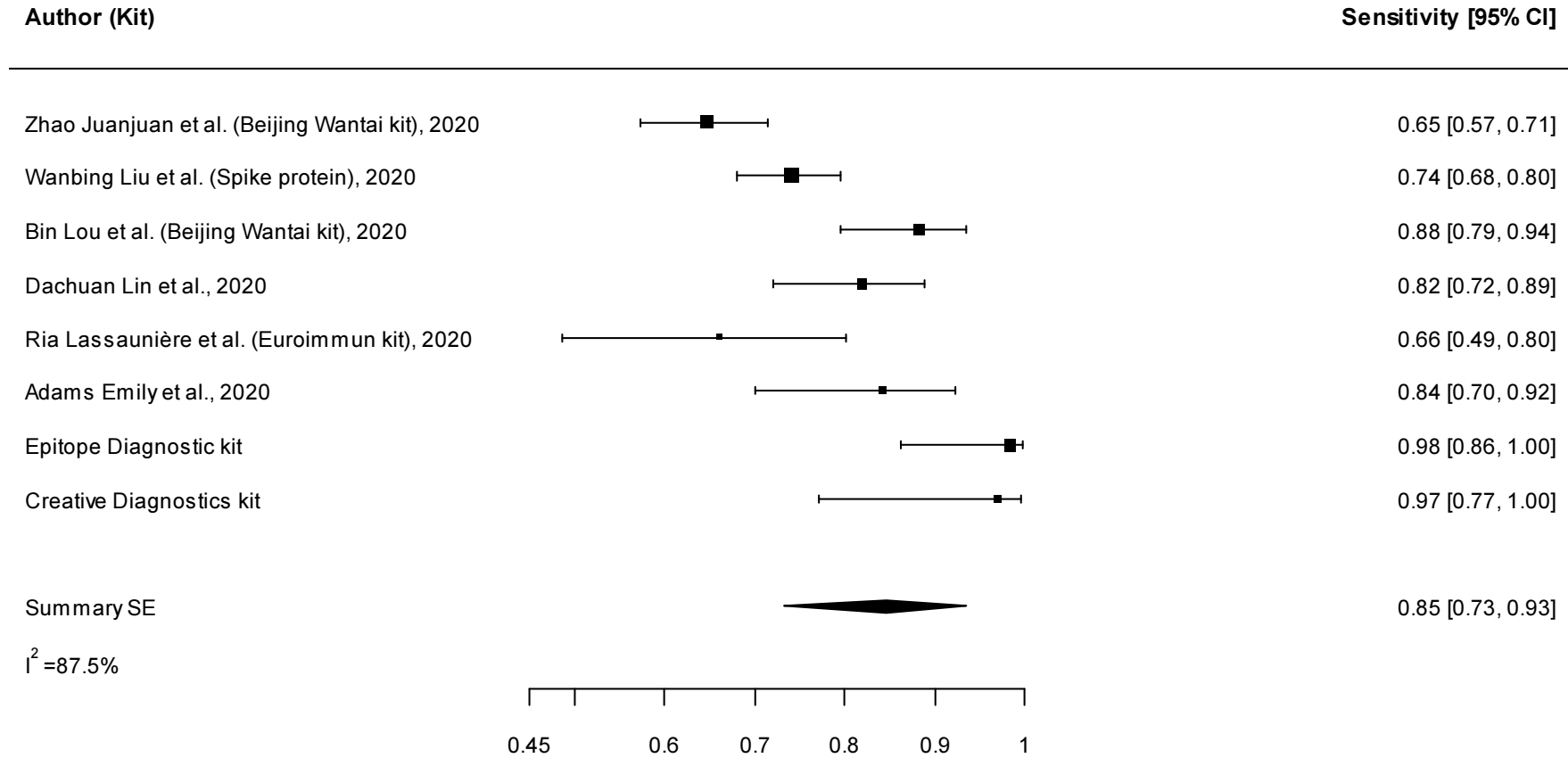
eFigure 1. Forest plot of the sensitivity of serological test for the detection of anti-SARS-CoV-2 IgM.

Antibody IgM

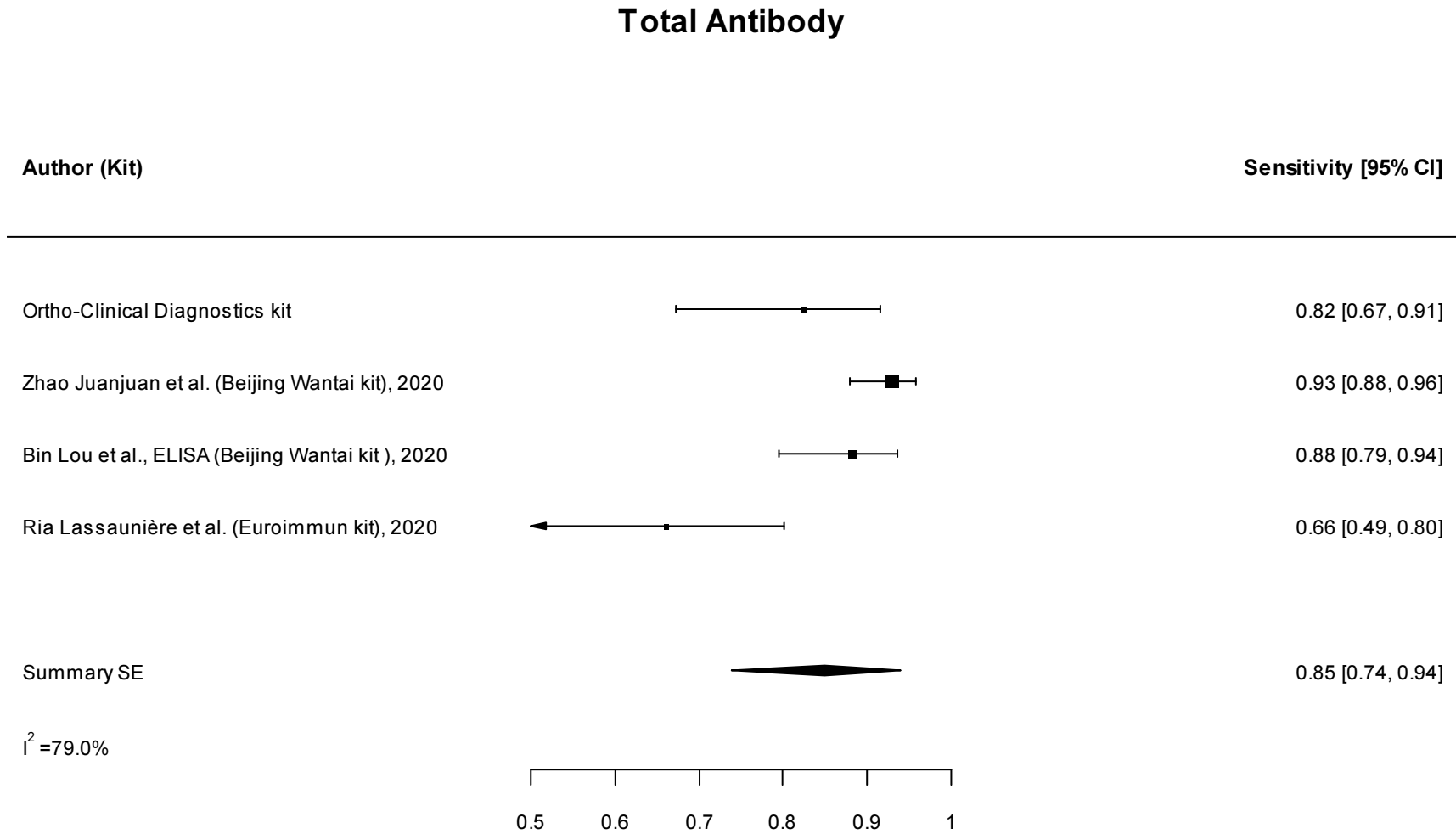


eFigure 2. Forest plot of the sensitivity of serological test for the detection of anti-SARS-CoV-2 IgG.

Antibody IgG

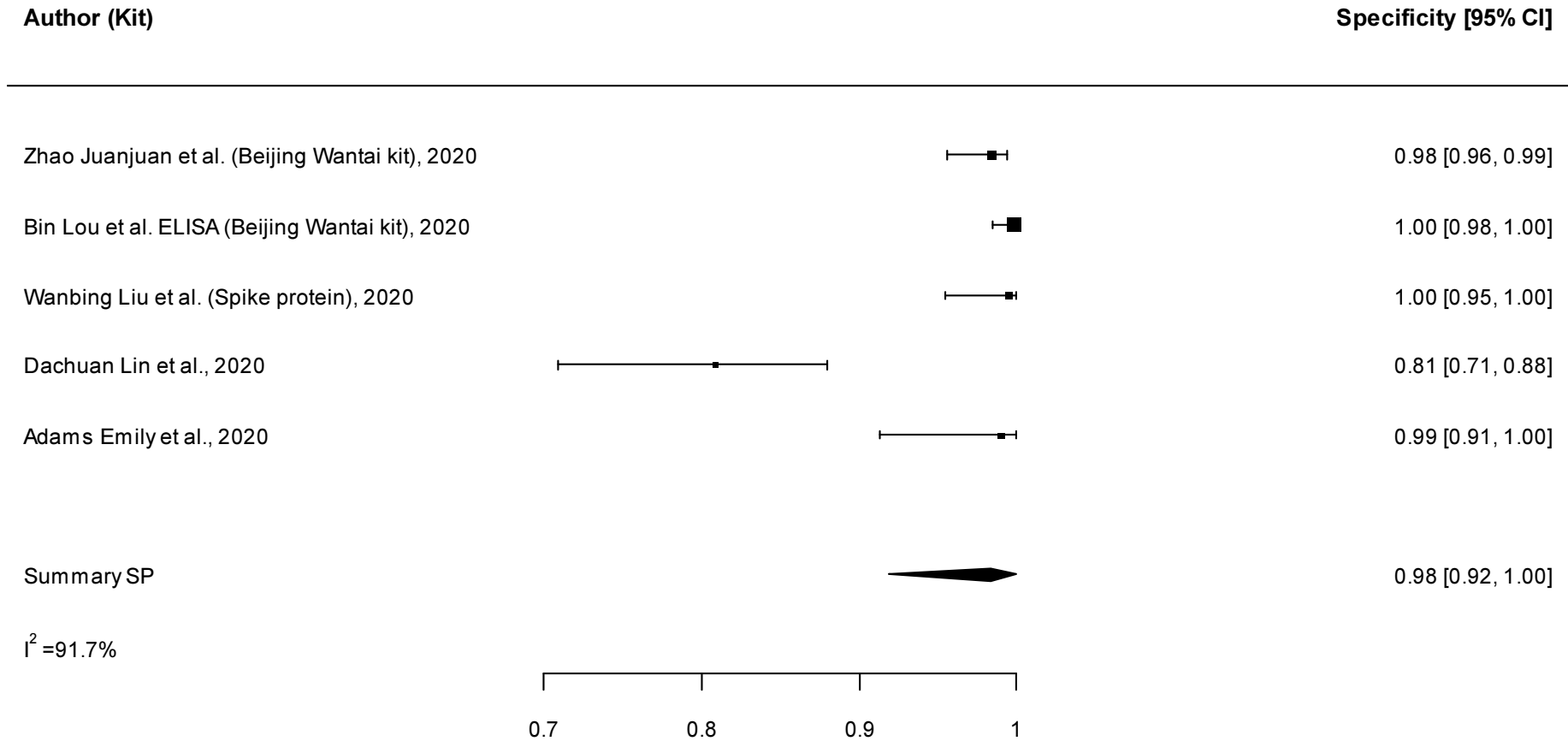


eFigure 3. Forest plot of the sensitivity of serological test for the detection of anti-SARS-CoV-2 total antibodies.



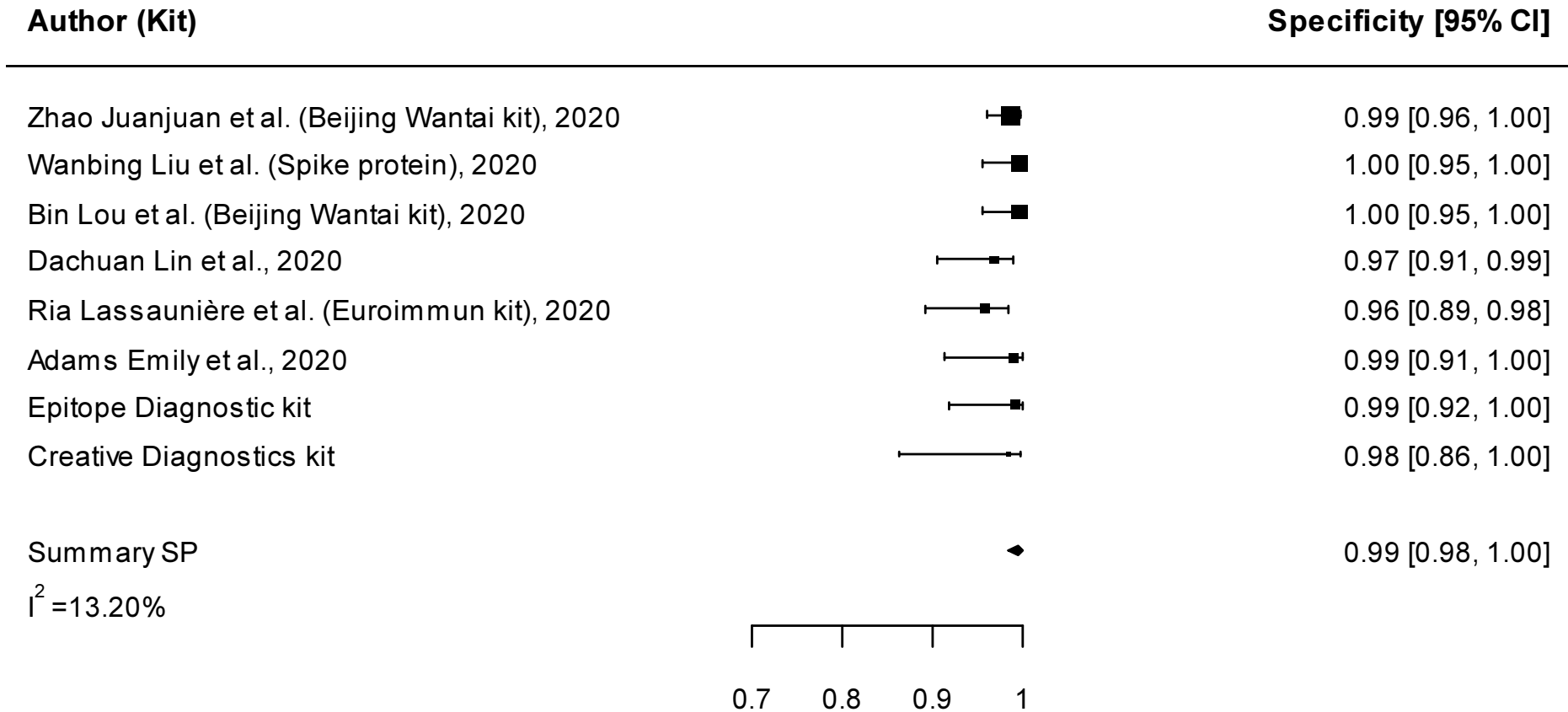
eFigure 4. Forest plot of the specificity of serological test for the detection of anti-SARS-CoV-2 IgM.

Antibody IgM



eFigure 5. Forest plot of the specificity of serological test for the detection of anti-SARS-CoV-2 IgG.

Antibody IgG



eFigure 6. Forest plot of the specificity of serological test for the detection of anti-SARS-CoV-2 total antibodies.

