

SUPPLEMENTARY APPENDIX TO
Impact of Campaign-Style Delivery of Routine Vaccines During Intensified Mission
Indradhanush in India: A Controlled Interrupted Time-Series Analysis

| | |
|--|----|
| Appendix A: Statistical methods | 2 |
| Appendix B: Sensitivity analyses | 3 |
| Table S1: District sample size | 5 |
| Figure S1: Covariate balance before matching (dataset for Models 1 and 4)..... | 6 |
| Figure S2: Covariate balance after matching by region, DTP3 coverage, and MI participation (dataset for Model 5)..... | 7 |
| Figure S3: Covariate balance after matching by state, DTP3 coverage, and MI participation (dataset for Model 6)..... | 8 |
| Figure S4: Covariate balance after restricting the control group to non-contiguous districts (dataset for Model 7)..... | 9 |
| Figure S5: Covariate balance after restricting the control group to non-contiguous districts and matching by DTP3 coverage and MI participation (dataset for Model 8)..... | 10 |
| Table S2: Regression results: percent change in doses delivered in treated districts | 11 |
| Figure S6: Results from sensitivity analyses: percentage point change in annual coverage due to IMI..... | 12 |
| Table S3: Variation in impact of IMI on coverage (over a 1-year period)..... | 14 |
| Table S4: Variable names in regression output tables | 15 |
| Table S5: Results from Model 1 (controlled interrupted time-series using panel data with the full sample of treated and untreated districts) | 16 |
| Table S6: Results from Model 2 (single interrupted time-series using aggregate data) in the treated districts..... | 17 |
| Table S7: Results from Model 3 (single interrupted time-series using panel data from treated districts only)..... | 18 |
| Table S8: Results from Model 4 (single interrupted time-series using panel data from treated districts, with regression control for the target population size) | 19 |
| Table S9: Results from Model 5 (controlled interrupted time-series using a matched set of control districts; matching on region, coverage, and MI participation)..... | 20 |
| Table S10: Results from Model 6 (controlled interrupted time-series with matching by state, coverage, and MI participation) | 21 |
| Table S11: Results from Model 7 (controlled interrupted time-series using non-contiguous control districts) | 22 |
| Table S12: Results from Model 8 (controlled interrupted time-series using non-contiguous control districts matched on coverage and MI participation)..... | 23 |

Appendix A: Statistical methods

Controlled interrupted time-series analysis: Single interrupted time-series studies model time trends in outcomes in the treated group, relying on the assumption that the outcome would have continued on their previous trend if treatment had not occurred [1]. Any deviation from the trend at the time of the treatment is assumed to be the result of the treatment. This method can be biased if an event coinciding in time with the treatment might have affected the outcome trend. Controlled interrupted time-series (CITS) models incorporate a comparison group to enable both before-after and between-group comparisons [2]. Controlled interrupted time-series studies rely on a weaker assumption than single interrupted time-series: these studies assume that, in the absence of treatment, any deviations from the trend in the treatment group coinciding with the time of the treatment would have been the same as the deviations in the control group (on the scale used in the model).

In our main analysis, we conducted a CITS analysis. The treatment group included all districts in the study sample that participated in IMI. The comparison group included all districts in the study sample that did not participate in IMI.

Regression models: Our main models took the form:

$$y_{it} \sim \text{QuasiPoisson}(\lambda_{it}, \delta)$$

$$\begin{aligned} \ln(\lambda_{it}) = & \alpha_{1-11} \text{Month}_t + \alpha_{12} \text{Time}_t + \alpha_{13} \text{IMI}_i * \text{Time}_t + \\ & \alpha_{14} \text{Post1}_t + \alpha_{15} \text{Post2}_t + \alpha_{16} \text{Post3}_t + \alpha_{17-(\Sigma i-1)} \text{District}_i + \\ & \beta_1 \text{Post1}_t * \text{IMI}_i + \beta_2 \text{Post2}_t * \text{IMI}_i + \beta_3 \text{Post3}_t * \text{IMI}_i + \\ & \beta_4 \text{Post1}_t * \text{IMI}_i * \text{urban}_i + \beta_5 \text{Post2}_t * \text{IMI}_i * \text{urban}_i + \beta_6 \text{Post2}_t * \text{IMI}_i * \text{urban}_i + \\ & \beta_7 \text{Post1}_t * \text{IMI}_i * \text{cov}_i + \beta_8 \text{Post2}_t * \text{IMI}_i * \text{cov}_i + \beta_9 \text{Post2}_t * \text{IMI}_i * \text{cov}_i \end{aligned}$$

where y_{ist} is the value of outcome y measured in district i at time t ; λ_{it} is the modelled mean of y_{it} , δ is a dispersion factor; Month_t is a set of 11 dummy variables for calendar months; District_i is a set of district fixed effects; Time_t is a continuous measure of time (in years); IMI_i is an indicator for whether district i was in the IMI program; Post1_t is an indicator variable for whether an observation occurs from October 1, 2017 through January 31, 2018; Post2_t is an indicator variable for whether an observation occurs from February 1, 2018 through May 31, 2018; and Post3_t is an indicator variable for whether an observation occurs from June 1, 2018 through September 30, 2018; urban_i is the estimated percent of children in district i living in urban areas in the 2016 DHS survey; and coverage_i is the coverage of the DTP3 vaccine among eligible children in district i in the 2016 DHS survey.

Appendix B: Sensitivity analyses

We tested the robustness of our results to several different model specifications and different approaches to selecting a comparison group.

Models 2 and 3: Single interrupted time-series with pooled and panel data

First, to assess whether our results were influenced substantially by trend changes in the comparison group, we estimated single interrupted time-series models (as is recommended in comparative interrupted time-series studies [2]). We did this in two ways: first, using aggregated data with one observation per month (Model 2 in sensitivity analysis results) and then using panel data at the district-month level as in our main analysis (Model 3). By using an aggregated model, we also test the extent to which our results are driven by our use of district-level data (which gives more weight to small districts than aggregate data would). The aggregated models took the form:

$$y_{it} \sim \text{QuasiPoisson}(\lambda_{it}, \delta)$$
$$\ln(\lambda_{it}) = \alpha_{1-11} \text{Month}_t + \alpha_{12} \text{Time}_t + \beta_1 \text{Post1}_t + \beta_2 \text{Post2}_t + \beta_3 \text{Post3}_t$$

where the three beta coefficients represent the treatment effect estimate. The panel single interrupted time-series models, which include district-level covariates, took the form:

$$y_{it} \sim \text{QuasiPoisson}(\lambda_{it}, \delta)$$
$$\ln(\lambda_{it}) = \alpha_{1-11} \text{Month}_t + \alpha_{12} \text{Time}_t + \beta_1 \text{Post1}_t + \beta_2 \text{Post2}_t + \beta_3 \text{Post3}_t + \beta_4 \text{Post1}_t * \text{urban}_i + \beta_5 \text{Post2}_t * \text{urban}_i + \beta_6 \text{Post2}_t * \text{urban}_i + \beta_7 \text{Post1}_t * \text{cov}_i + \beta_8 \text{Post2}_t * \text{cov}_i + \beta_9 \text{Post2}_t * \text{cov}_i$$

where the nine beta coefficients represent the treatment effect estimate.

Model 4: Single interrupted time-series, controlling for target population size

Next, to control for potential time-varying confounding by target population size, we estimated single interrupted time-series models controlling for the number of children eligible for each vaccine (Model 4). These models used panel (district-month level) data. We estimated the number of eligible children by lagging data on live births from the HMIS system. For example, since the DTP1 vaccine is administered to infants at 6 weeks of age, we estimated the target population size for this vaccine by lagging live births by one month.

Models 5 and 6: Controlled interrupted time-series with matched comparison groups

Our CITS analysis could be biased if some event, coinciding in time with IMI, affected outcome trends in the treated and untreated districts differently. For example, this might occur if a weather event or policy change affected districts with certain characteristics, and the treated and untreated districts differed on those characteristics. To account for this possible situation, we conducted several matched analyses, analyzing outcome trends in a subset of treated and untreated districts with similar characteristics.

We used coarsened exact matching, which ensures multivariate balance on the variables included in the matching algorithm [3]. This approach resulted in a smaller sample that has different characteristics from the overall treatment group, but it has the advantage of improving the balance between treated and controlled districts (Figures S1-S5).

We first matched on region, DTP3 coverage at baseline, and participation in Mission Indradhanush (MI) (Model 5). We measured participation in MI as a categorical variable, with three categories: (1) participation in the most recent wave of MI; (2) participation in other waves of MI, but not the recent wave; and (3) no participation in MI.

We then matched on state, DTP3 coverage at baseline, and participation in MI (Model 6). Matching on state, rather than region, resulted in a smaller sample size but potentially better confounding control if confounding events occurred at the state level.

Models 7 and 8: Controlled interrupted time-series with non-contiguous control districts

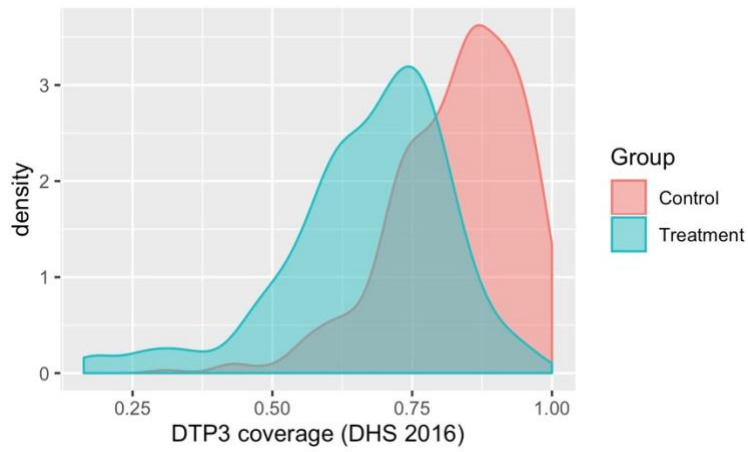
Finally, our CITS analysis could also be biased if there were spillover effects from IMI. For example, families in control districts neighboring on treated districts might have benefited from social mobilization activities in treated districts, or they might have brought their children to be vaccinated at immunization sessions held in treated districts. To account for this, we conducted a sensitivity analysis restricting the comparison group to districts that do not border treated districts (Model 7). We also conducted a sensitivity analysis restricting the comparison group to districts that do not border treated districts and matching (using coarsened exact matching) on baseline DTP3 coverage and participation in MI.

Table S1: District sample size

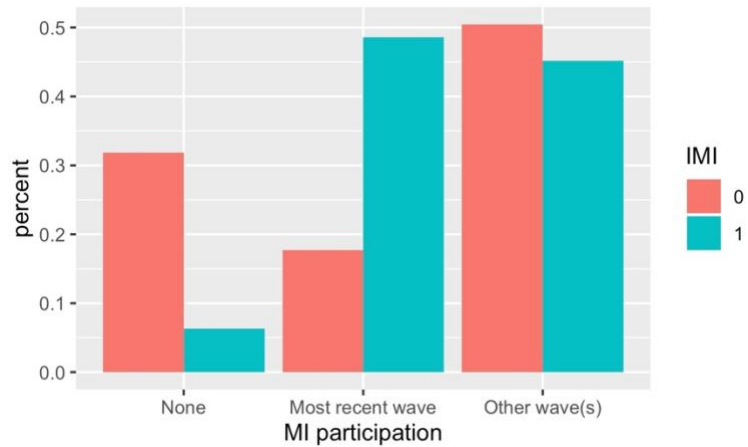
| | Number of control districts (live births in 2017) | Number of treated districts (live births in 2017) | Total (live births in 2017) |
|--|--|--|--|
| Total numbers | 549 | 187 | 736 |
| a) Full (raw) HMIS dataset | 553 <i>(13,370,522)</i> | 188 <i>(7,470,863)</i> | 741 <i>(20,841,385)</i> |
| b) After correcting for name changes | 528 <i>(13,370,522)</i> | 183 <i>(7,470,863)</i> | 711 <i>(20,841,385)</i> |
| c) After merging together districts that either merged or split during the study period (as long as both members of the merge or split were in the same treatment group) | 513 <i>(13,370,522)</i> | 179 <i>(7,470,863)</i> | 692 <i>(20,841,385)</i> |
| d) After removing districts with significant administrative changes during the study period, which could not be resolved in Step (b). | 426 <i>(11,054,195)</i> | 175 <i>(7,312,093)</i> | 601 <i>(18,366,288)</i> |
| e) After removing districts with incomplete time-series data for two years prior to the start of the intervention | 424 <i>(11,032,573)</i> | 175 <i>(7,312,093)</i> | 599 <i>(18,344,666)</i> |
| f) Sample for Model 1 | 424 <i>(11,032,573)</i> | 175 <i>(7,312,093)</i> | 599 <i>(18,344,666)</i> |
| g) Sample for Models 2-4 | 0 | 175 | 175 |
| h) Sample for Model 5 | 220 <i>(6,011,962)</i> | 139 <i>(5,563,880)</i> | 359 <i>(11,575,842)</i> |
| i) Sample for Model 6 | 107 <i>(3,688,734)</i> | 91 <i>(3,196,589)</i> | 198 <i>(6,885,323)</i> |
| j) Sample for Model 7 | 220 <i>(4,939,253)</i> | 175 <i>(7,312,093)</i> | 395 <i>(12,251,346)</i> |
| k) Sample for Model 8 | 219 <i>(4,937,477)</i> | 130 <i>(5,145,002)</i> | 349 <i>(10,082,479)</i> |

Figure S1: Covariate balance before matching (dataset for Models 1 and 4)

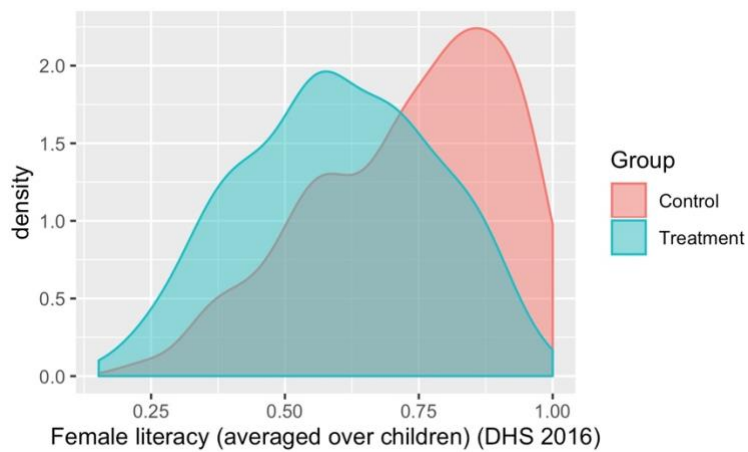
A) Baseline DTP3 coverage



B) Participation in Mission Indradhanush



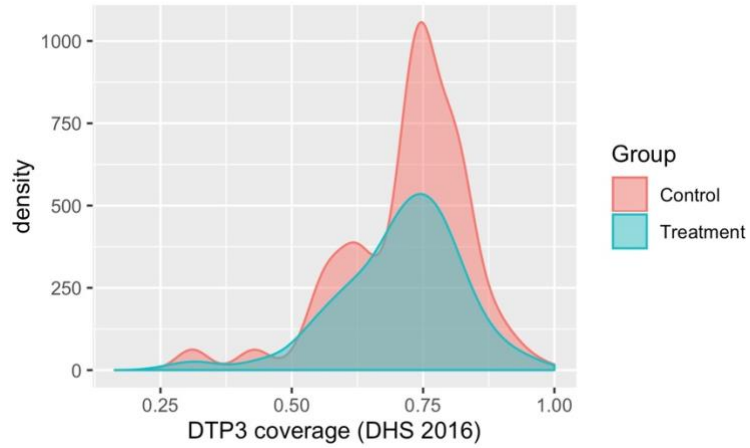
C) Percent of children whose mothers can read



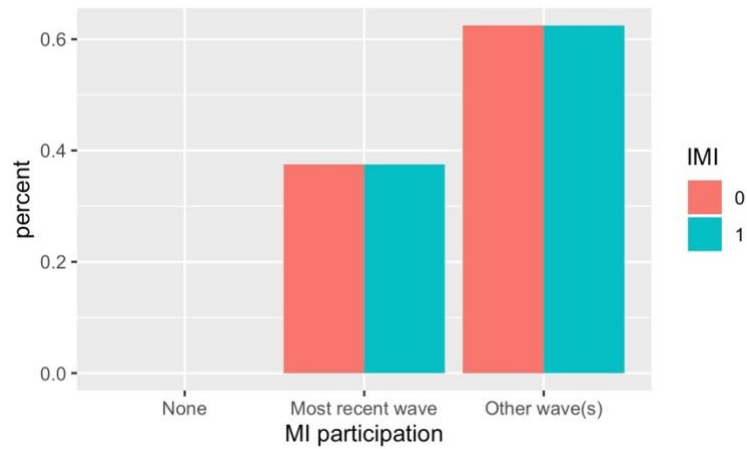
Notes: This figure shows covariate balance between treated (IMI) and control (non-IMI) districts in the full study sample, used for analysis in Models 1 and 4.

Figure S2: Covariate balance after matching by region, DTP3 coverage, and MI participation (dataset for Model 5)

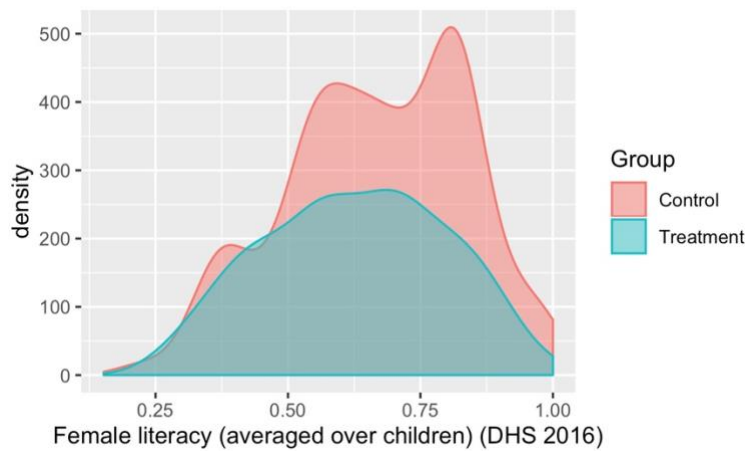
A) Baseline DTP3 coverage



B) Participation in Mission Indradhanush



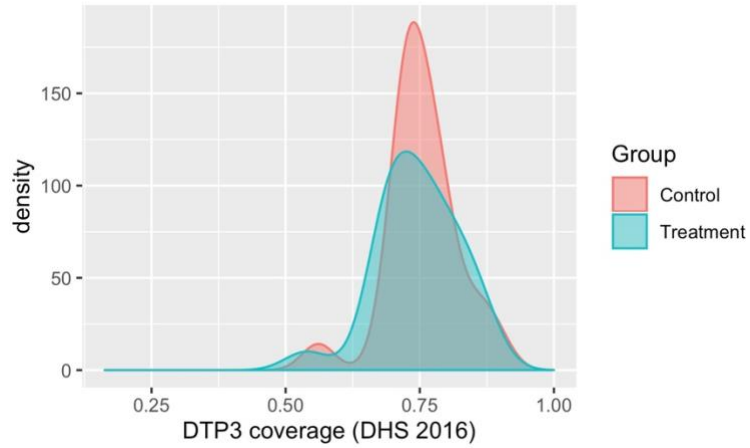
C) Percent of children whose mothers can read



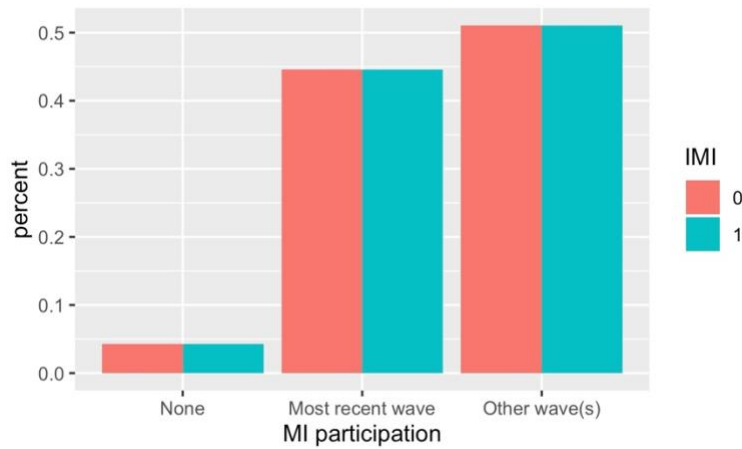
Notes: This figure shows covariate balance between treated (IMI) and control (non-IMI) districts in the matched study sample, used for analysis in Model 5. Weights from coarsened exact matching were applied before plots were generated.

Figure S3: Covariate balance after matching by state, DTP3 coverage, and MI participation (dataset for Model 6)

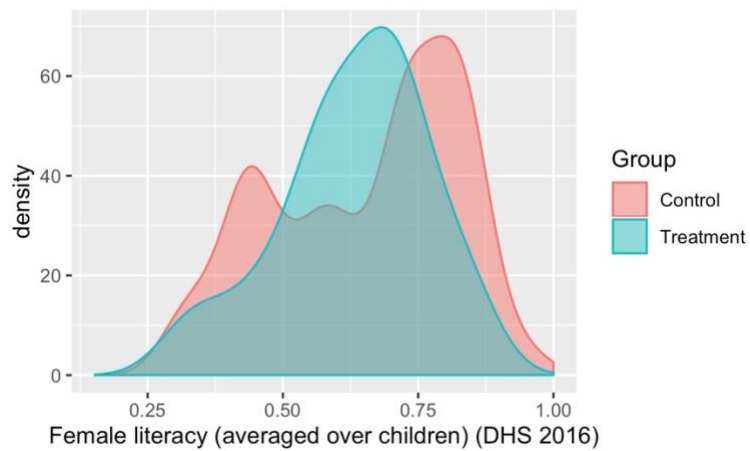
A) Baseline DTP3 coverage



B) Participation in Mission Indradhanush



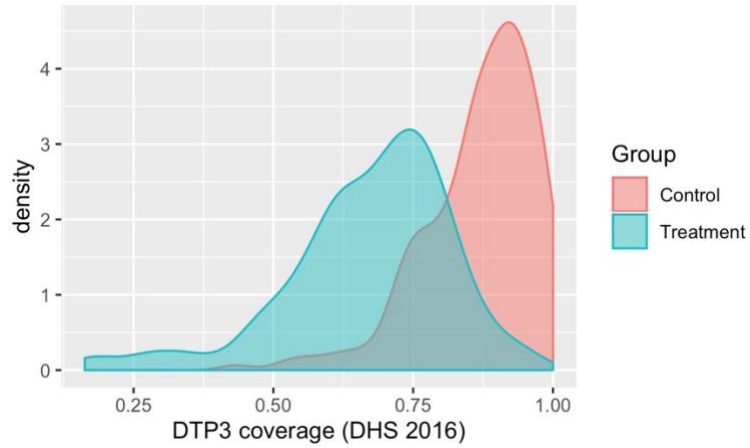
C) Percent of children whose mothers can read



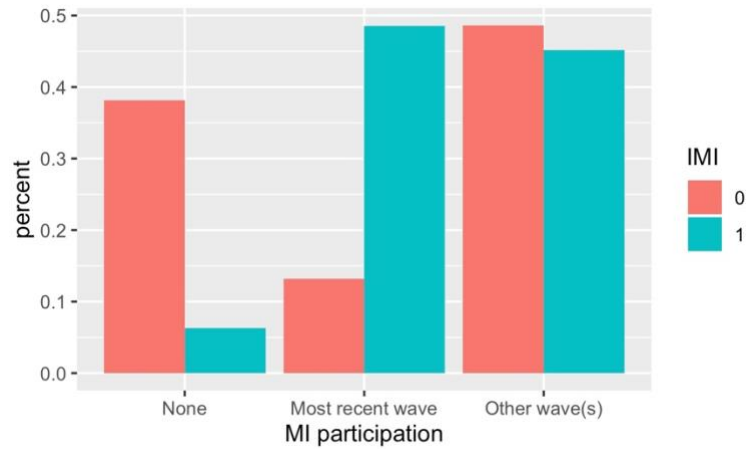
Notes: This figure shows covariate balance between treated (IMI) and control (non-IMI) districts in the matched study sample, used for analysis in Model 6. Weights from coarsened exact matching were applied before plots were generated.

Figure S4: Covariate balance after restricting the control group to non-contiguous districts (dataset for Model 7)

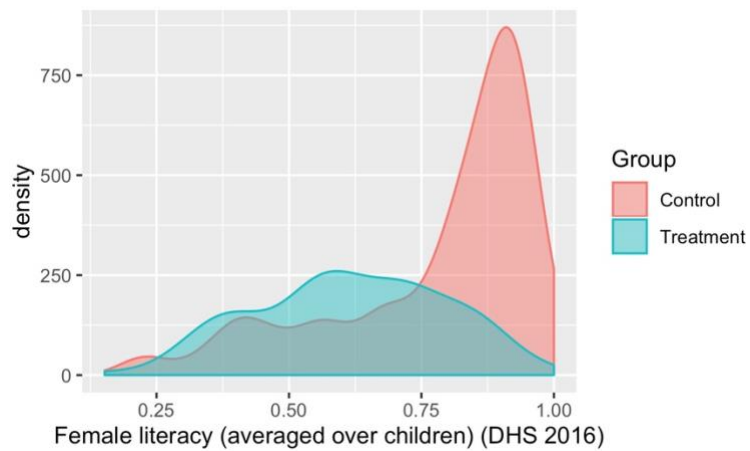
A) Baseline DTP3 coverage



B) Participation in Mission Indradhanush



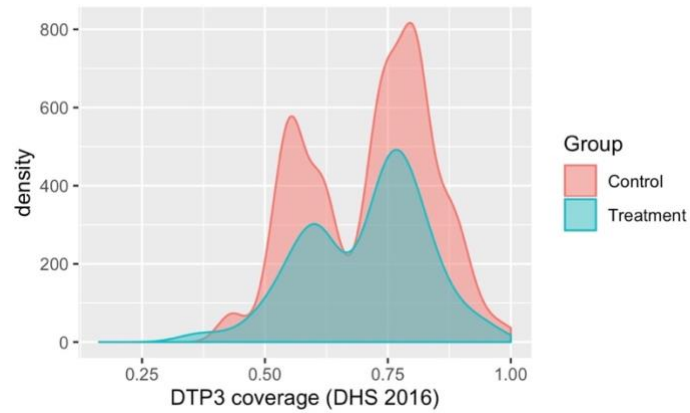
C) Percent of children whose mothers can read



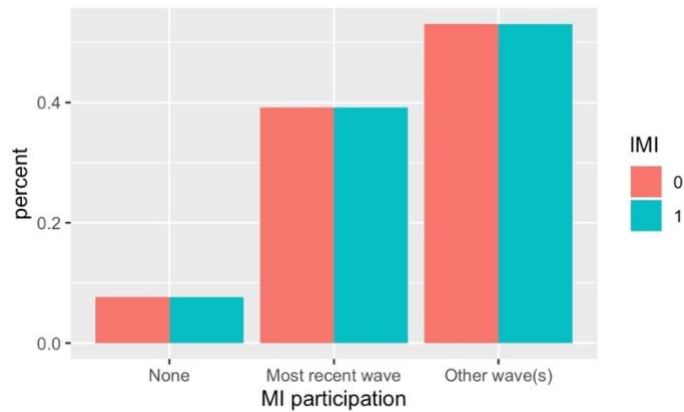
Notes: This figure shows covariate balance between treated (IMI) and control (non-IMI) districts in the study sample, with the control group restricted to districts that did not border treatment districts (as used for analysis in Model 7).

Figure S5: Covariate balance after restricting the control group to non-contiguous districts and matching by DTP3 coverage and MI participation (dataset for Model 8)

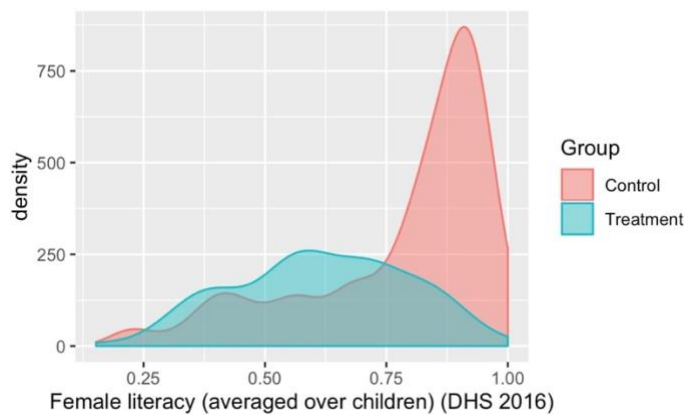
A) Baseline DTP3 coverage



B) Participation in Mission Indradhanush



C) Percent of children whose mothers can read



Notes: This figure shows covariate balance between treated (IMI) and control (non-IMI) districts in the sample used for analysis in Model 8. The control group was restricted to untreated districts that did not border treated districts, and then coarsened exact matching was used. Weights from coarsened exact matching were applied before plots were generated.

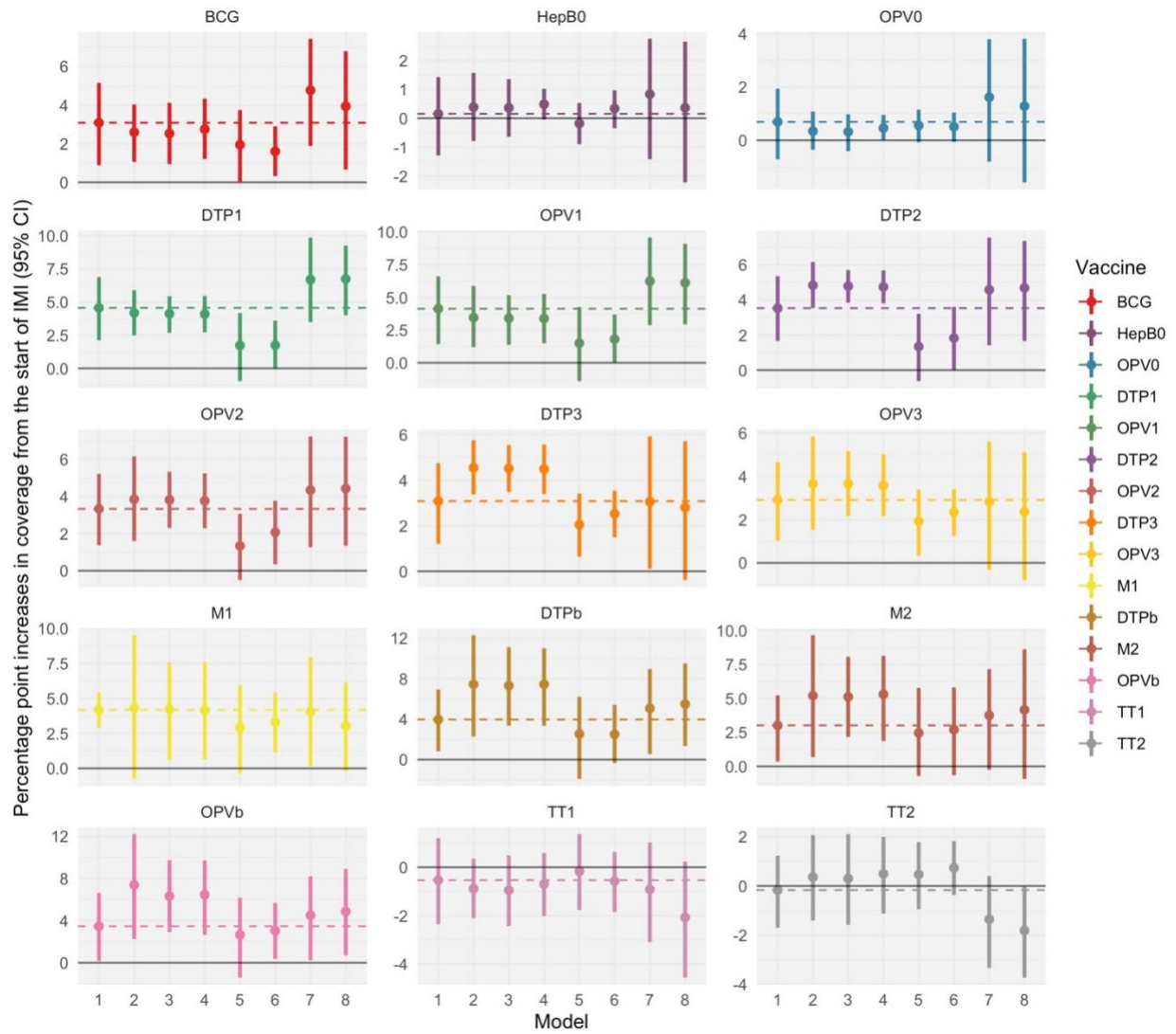
Table S2: Regression results: percent change in doses delivered in treated districts

| Vaccine | (1) Months 1-4 (during IMI implementation) | (2) Months 5-8 (immediately after implementation ended) | (3) Months 9-12 (four months after implementation ended) |
|---------|--|---|--|
| BCG | 9.0 (2.8, 15.6) | -1.8 (-9.4, 6.3) | 4.1 (-3.8, 12.6) |
| HepB0 | 1.6 (-6.4, 10.2) | 1.7 (-9.6, 14.3) | 10.1 (-2.5, 24.4) |
| OPV0 | 3.9 (-2.1, 10.3) | 0.0 (-8.7, 9.5) | 5.9 (-3.1, 15.8) |
| DTP1 | 12.8 (5.3, 21.0) | 0.9 (-6.0, 8.2) | 3.6 (-4.2, 11.9) |
| OPV1 | 11.9 (3.8, 20.7) | 0.3 (-7.1, 8.3) | 2.3 (-6, 11.3) |
| DTP2 | 10.6 (5.1, 16.5) | -0.7 (-7.5, 6.6) | 2.7 (-5.0, 11.1) |
| OPV2 | 10.3 (4.6, 16.4) | -0.9 (-7.8, 6.5) | 1.9 (-5.8, 10.4) |
| DTP3 | 10.0 (4.4, 15.8) | -2.1 (-8.6, 4.8) | 2.3 (-4.9, 10.0) |
| OPV3 | 9.6 (4.1, 15.4) | -2.8 (-9.1, 4.1) | 1.4 (-5.6, 8.9) |
| M1 | 11.8 (8.2, 15.6) | -1.1 (-5.6, 3.7) | 2.8 (-2.3, 8.3) |
| DTPb | 13.8 (3.0, 25.7) | -4.4 (-11.6, 3.4) | 1.1 (-7.6, 10.5) |
| M2 | 10.7 (1.8, 20.4) | -1.8 (-9.6, 6.6) | 1.8 (-7.2, 11.8) |
| OPVb | 12.3 (0.9, 24.9) | -6.4 (-14.2, 2.1) | -1.2 (-10.5, 9.1) |
| TT1 | -1.7 (-8.0, 4.9) | -2.7 (-8.2, 3.0) | 5.0 (-1.2, 11.5) |
| TT2 | -0.2 (-4.8, 4.6) | -6.3 (-10.0, -2.5) | 3.1 (-1.3, 7.7) |

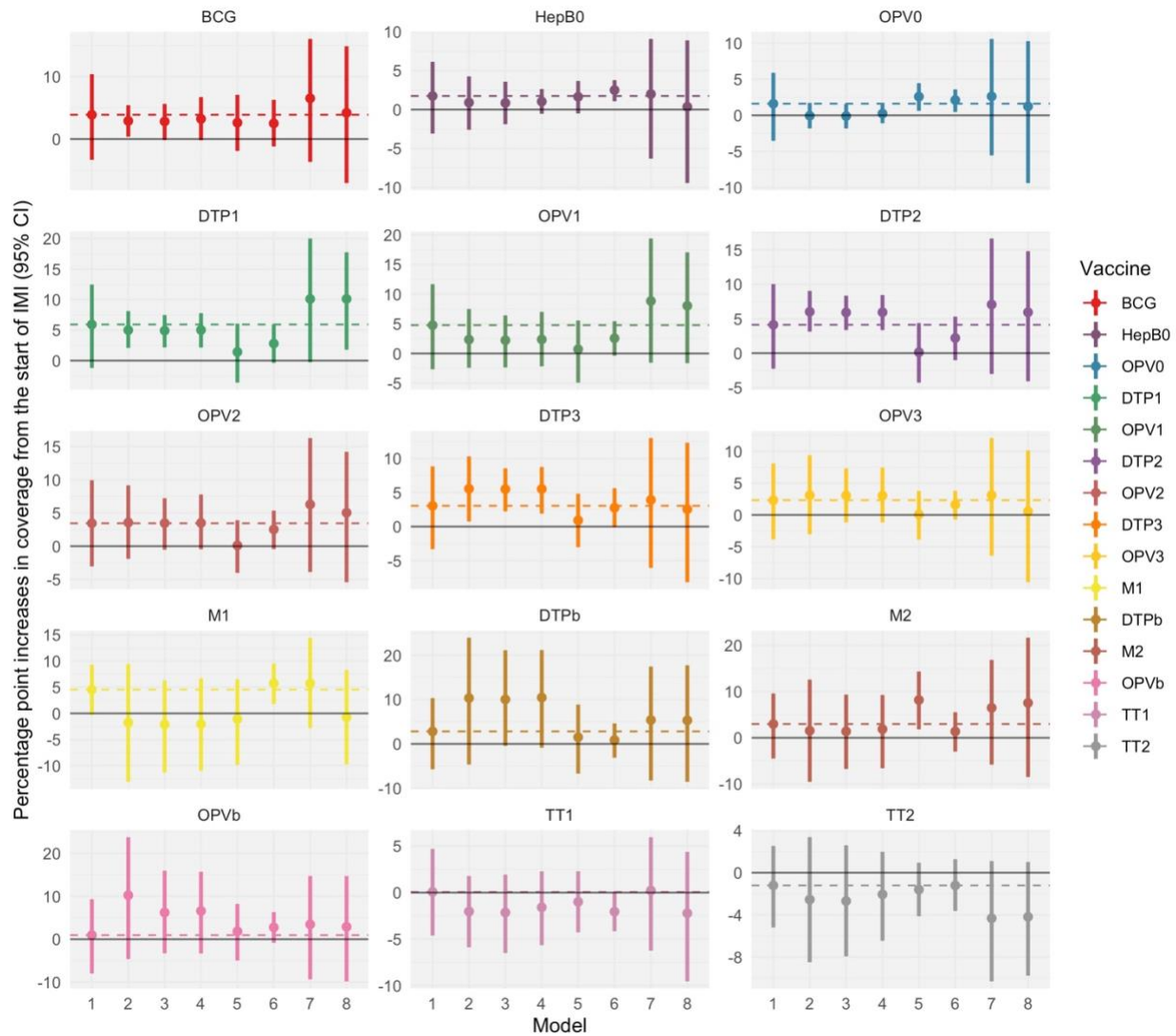
Notes: This table shows estimates of the effect of IMI on doses delivered, measured as a percent change in doses delivered in each of three time periods ((1) during implementation; (2) the four months following implementation; and (3) the four months after that. Covariate values (urbanization and baseline coverage) are fixed at their mean values. To show percent change, we first exponentiate regression coefficients (because models are fit with a log link function), then subtract one and multiply by 100. To calculate 95% confidence intervals on the same scale, we first calculate 95% confidence intervals on the log scale using assumptions from the normal distribution, and then exponentiate the interval bounds, subtract one, and multiply by 100.

Figure S6: Results from sensitivity analyses: percentage point change in annual coverage due to IMI

Panel A: Implementation period (Months 1-4)



Panel B: Months 1-12



Notes: This figure shows point estimates and 95% confidence intervals for the effect of IMI on coverage. The first set of panels shows results for the implementation period and the second set of panels shows results for the full year from the start of implementation. The horizontal dotted line on each panel shows the point estimate from the Model 1, the main model. Model 1 is a comparative interrupted time-series, using all untreated districts in the study sample. Model 2 is a single interrupted time-series, with all data from the treated districts pooled into one observation per time period. Model 3 is a single interrupted time-series, with a panel data structure. Model 4 is a single interrupted time-series with a panel data structure, using regression control for potential time-varying confounding by target population size. Model 5 is a controlled interrupted time-series, with a control group selected using coarsened exact matching by region, baseline coverage, and MI participation. Model 6 is a controlled interrupted time-series, with a control group selected using coarsened exact matching by state, baseline coverage, and MI participation. Model 7 is a controlled interrupted time-series, with the comparison group consisting of all untreated districts that do not neighbor the treated districts. Finally, Model 8 is a controlled interrupted time-series, with a comparison group consisting of non-contiguous control districts that were matched to treated districts based on coverage and MI participation.

Table S3: Variation in impact of IMI on coverage (over a 1-year period)

| | Variation by baseline DTP3 coverage | Variation by urbanization |
|-------|--|--|
| | <i>Treatment effect in districts with 76% baseline DTP3 coverage minus treatment effect in districts with 60% baseline coverage (95% CI)</i> | <i>Treatment effect in districts with 28.4% urbanization minus treatment effect in districts with 8.5% urbanization (95% CI)</i> |
| BCG | 0.9 (0.1, 1.7) | -1.2 (-2.8, 0.3) |
| HepB0 | -0.8 (-1.5, -0.2) | -1.4 (-2.5, -0.3) |
| OPV0 | -0.2 (-0.8, 0.4) | -1.9 (-3.3, -0.6) |
| DTP1 | 0.7 (0.0, 1.5) | 0.5 (-1.2, 2.1) |
| OPV1 | 0.2 (-0.6, 1.0) | 0.2 (-1.6, 2.0) |
| DTP2 | 0.6 (-0.3, 1.5) | -0.3 (-1.6, 1.0) |
| OPV2 | 0.3 (-0.5, 1.2) | -0.5 (-1.9, 1.0) |
| DTP3 | -0.2 (-1.0, 0.7) | 0.1 (-1.0, 1.2) |
| OPV3 | 0.2 (-0.7, 1.2) | -0.3 (-1.6, 0.9) |
| M1 | -0.7 (-1.9, 0.6) | -0.8 (-2.8, 1.4) |
| DTPb | 0.3 (-0.7, 1.2) | -1.1 (-2.9, -0.4) |
| M2 | 1.2 (0.3, 2.2) | -0.8 (-2.7, 1.1) |
| OPVb | 0.1 (-0.9, 0.9) | -0.8 (-2.1, -0.1) |
| TT1 | -0.4 (-0.8, 0.1) | -0.2 (-1.3, 1.0) |
| TT2 | 1.6 (0.8, 2.5) | 0.1 (-1.3, 1.5) |

Notes: Column 1 shows how the estimated impact of IMI on vaccine coverage varies for districts with different baseline DTP3 coverage levels. For example, 76% baseline DTP3 coverage (equivalent to the 75th percentile among the treated districts) IMI has a 0.6 percentage point larger impact on coverage of DTP3 among districts with 76% baseline DTP3 coverage (equivalent to the 75th percentile among the treated districts) than among districts with 60% DTP3 coverage (equivalent to the 25th percentile among the treated districts). Equal-tailed 95% credible intervals are shown for results

Table S4: Legend for regression output tables

| Variable name or abbreviation | Meaning |
|--------------------------------------|--|
| Date_inyears | Continuous variable measuring time in years |
| Post1 | Dummy variable for the IMI implementation period (October 2017 through January 2018) |
| Post2 | Dummy variable for the four months immediately following IMI implementation (February 2018 through May 2018) |
| Post3 | Dummy variable for the four months from June 2018 through August 2018 |
| IMI | Dummy variable for participation in IMI |
| Coverage | Baseline DTP3 coverage at the district level (measured using data from the 2016 DHS survey) |
| Urbanization | Percent of the district population living in an urban area (measured using data from the 2016 DHS survey) |
| Target pop | Target population size for each vaccine. This is estimated as the number of lagged live births, with the length of the lag depending on the outcome variable. The lag for BCG is 0 months, for DTP1 is 1 month, for DTP2 is 2 months, for DTP3 is 3 months, for M1 is 9 months, for M2 is 9 months, and for TT1 and TT2 is 0 months. |
| Sessions | Number of immunization sessions held per district-month |
| * | Statistically significant at the 0.10 level |
| ** | Statistically significant at the 0.05 level |
| *** | Statistically significant at the 0.01 level |
| se | Standard error |

Table S5: Results from Model 1 (controlled interrupted time-series using panel data with the full sample of treated and untreated districts)

| | BCG | HepB0 | OPV0 | DTP1 | OPV1 | DTP2 | OPV2 | DTP3 | OPV3 | M1 | DTPb | M2 | OPVb | TT1 | TT2 | Sessions |
|--------------------|-----------|-----------|-----------|-----------|-----------|-----------|-----------|-----------|-----------|-----------|-----------|-----------|-----------|-----------|-----------|-----------|
| date_inyears | -0.014 | 0.055*** | 0.01 | -0.001 | 0.011 | -0.009 | 0.004 | -0.009 | 0.002 | 0.067*** | -0.039 | 0.002 | -0.028 | 0.015 | 0.036*** | -0.019** |
| <i>s.e.</i> | (0.010) | -0.014 | -0.01 | (0.008) | -0.009 | (0.008) | -0.009 | (0.009) | -0.009 | (0.016) | -0.034 | (0.024) | -0.025 | (0.009) | (0.011) | (0.009) |
| post1 | 0.010 | 0.015 | -0.002 | 0.016 | 0.009 | 0.034*** | 0.020* | 0.027** | 0.014 | 0.019 | 0.091 | 0.053 | 0.072* | -0.026 | 0.002 | 0.013 |
| | (0.016) | -0.027 | -0.019 | (0.015) | -0.017 | (0.012) | -0.011 | (0.012) | -0.012 | (0.034) | -0.058 | (0.042) | -0.043 | (0.017) | (0.019) | (0.013) |
| post2 | -0.003 | -0.019 | -0.023 | -0.001 | -0.007 | 0.008 | 0.004 | 0.016 | 0.013 | -0.055* | 0.047 | -0.048 | 0.04 | -0.041*** | -0.024 | 0.033* |
| | (0.024) | -0.028 | -0.023 | (0.016) | -0.015 | (0.016) | -0.014 | (0.016) | -0.016 | (0.032) | -0.06 | (0.037) | -0.041 | (0.016) | (0.017) | (0.017) |
| post3 | 0.010 | -0.062** | -0.042* | 0.013 | -0.02 | 0.021 | -0.009 | 0.017 | -0.009 | -0.086*** | 0.095 | -0.065 | 0.049 | -0.008 | -0.024 | 0.054** |
| | (0.023) | -0.028 | -0.022 | (0.019) | -0.021 | (0.017) | -0.019 | (0.017) | -0.018 | (0.028) | -0.078 | (0.059) | -0.059 | (0.014) | (0.017) | (0.021) |
| IMI*post1 | 0.086*** | 0.016 | 0.038 | 0.121*** | 0.113*** | 0.101*** | 0.098*** | 0.095*** | 0.092*** | 0.112*** | 0.129** | 0.102** | 0.116** | -0.018 | -0.002 | 0.107*** |
| | (0.030) | -0.042 | -0.03 | (0.035) | -0.038 | (0.026) | -0.027 | (0.026) | -0.026 | (0.017) | -0.051 | (0.043) | -0.054 | (0.033) | (0.024) | (0.036) |
| IMI*post2 | -0.018 | 0.016 | 0 | 0.009 | 0.003 | -0.007 | -0.009 | -0.022 | -0.028 | -0.011 | -0.045 | -0.018 | -0.066 | -0.028 | -0.065*** | -0.080* |
| | (0.041) | -0.06 | -0.046 | (0.036) | -0.039 | (0.036) | -0.037 | (0.035) | -0.035 | (0.024) | -0.04 | (0.042) | -0.044 | (0.029) | (0.020) | (0.048) |
| IMI*post3 | 0.040 | 0.096 | 0.057 | 0.035 | 0.022 | 0.027 | 0.019 | 0.023 | 0.014 | 0.028 | 0.01 | 0.018 | -0.012 | 0.049 | 0.031 | -0.063 |
| | (0.040) | -0.062 | -0.045 | (0.040) | -0.043 | (0.040) | -0.04 | (0.037) | -0.036 | (0.026) | -0.046 | (0.048) | -0.051 | (0.031) | (0.022) | (0.054) |
| date_inyears*IMI | -0.022 | -0.016 | 0 | -0.026 | -0.019 | -0.015 | -0.009 | -0.004 | 0.004 | 0.018 | 0.019 | 0.026 | 0.03 | -0.034** | 0.006 | 0.040 |
| | (0.016) | -0.028 | -0.02 | (0.016) | -0.018 | (0.018) | -0.018 | (0.018) | -0.016 | (0.014) | -0.022 | (0.020) | -0.023 | (0.015) | (0.009) | (0.025) |
| IMI*post1*urban | -0.156*** | -0.174*** | -0.245*** | -0.075 | -0.097** | -0.041 | -0.067* | -0.003 | -0.026 | -0.188*** | -0.129*** | -0.005 | -0.106*** | 0.048 | 0.017 | -0.116*** |
| | (0.036) | -0.047 | -0.044 | (0.048) | -0.049 | (0.038) | -0.038 | (0.041) | -0.042 | (0.045) | -0.047 | (0.057) | -0.04 | (0.056) | (0.050) | (0.029) |
| IMI*post2*urban | 0.024 | -0.03 | -0.069 | 0.044 | 0.019 | -0.032 | -0.052 | -0.015 | -0.054* | 0.013 | -0.097*** | -0.180*** | -0.082*** | 0.031 | 0.092* | 0.160*** |
| | (0.049) | -0.082 | -0.086 | (0.034) | -0.039 | (0.035) | -0.035 | (0.028) | -0.029 | (0.056) | -0.031 | (0.069) | -0.027 | (0.039) | (0.055) | (0.020) |
| IMI*post3*urban | -0.040 | -0.156 | -0.139* | 0.094** | 0.081 | 0.006 | 0.003 | -0.029 | -0.041 | -0.002 | -0.114** | -0.139 | -0.088* | -0.061** | -0.102*** | 0.157*** |
| | (0.052) | -0.095 | -0.08 | (0.041) | -0.054 | (0.045) | -0.053 | (0.037) | -0.05 | (0.072) | -0.051 | (0.093) | -0.052 | (0.030) | (0.031) | (0.019) |
| IMI*post1*coverage | -0.137*** | -0.014 | -0.036 | -0.246*** | -0.280*** | -0.336*** | -0.371*** | -0.445*** | -0.448*** | -0.432*** | -0.261** | -0.335*** | -0.335*** | -0.201*** | -0.196*** | -0.105** |
| | (0.056) | -0.063 | -0.044 | (0.089) | -0.087 | (0.075) | -0.069 | (0.045) | -0.043 | (0.045) | -0.109 | (0.118) | -0.113 | (0.047) | (0.042) | (0.041) |
| IMI*post2*coverage | 0.093** | -0.125 | -0.072 | 0.109** | 0.082* | 0.201*** | 0.161*** | 0.118* | 0.142** | -0.173*** | 0.279*** | 0.323*** | 0.248*** | 0.079*** | 0.199*** | -0.008 |
| | (0.045) | -0.078 | -0.065 | (0.045) | -0.045 | (0.051) | -0.046 | (0.071) | -0.06 | (0.044) | -0.055 | (0.073) | -0.052 | (0.028) | (0.027) | (0.043) |
| IMI*post3*coverage | -0.075 | -0.214*** | -0.214*** | -0.181*** | -0.218*** | -0.154** | -0.197*** | -0.122* | -0.123* | -0.385*** | -0.171*** | -0.173** | -0.178*** | -0.068*** | -0.037 | -0.272 |
| | (0.042) | -0.065 | -0.049 | (0.055) | -0.057 | (0.069) | -0.06 | (0.072) | -0.067 | (0.054) | -0.065 | (0.080) | -0.061 | (0.024) | (0.033) | (0.051) |
| Observations | 21,564 | 21,564 | 21,564 | 21,564 | 21,564 | 21,564 | 21,564 | 21,564 | 21,564 | 21,564 | 21,564 | 21,564 | 21,564 | 21,564 | 21,533 | 21,537 |

Table S6: Results from Model 2 (single interrupted time-series using aggregate data) in the treated districts

| | BCG | HepB0 | OPV0 | DTP1 | OPV1 | DTP2 | OPV2 | DTP3 | OPV3 | M1 | DTPb | M2 | OPVb | TT1 | TT2 | Sessions |
|----------|-----------|-----------|-----------|-----------|-----------|-----------|-----------|-----------|-----------|-----------|-----------|-----------|-----------|-----------|-----------|-----------|
| date | -0.025*** | 0.037 | 0.013 | -0.013 | 0.006 | -0.021* | -0.001 | -0.016 | 0.005 | 0.091*** | -0.025 | 0.026 | -0.002 | -0.02 | 0.040** | 0.015 |
| | -0.005 | -0.023 | -0.009 | -0.008 | -0.016 | -0.011 | -0.018 | -0.014 | -0.021 | -0.024 | -0.057 | -0.035 | -0.047 | -0.014 | -0.019 | (0.012) |
| post1 | 0.066*** | 0.021 | 0.014 | 0.102*** | 0.084*** | 0.128*** | 0.101*** | 0.127*** | 0.102*** | 0.1 | 0.235*** | 0.166** | 0.201** | -0.032 | 0.01 | 0.147*** |
| | -0.021 | -0.035 | -0.015 | -0.022 | -0.031 | -0.019 | -0.031 | -0.018 | -0.032 | -0.064 | -0.091 | -0.079 | -0.082 | -0.021 | -0.026 | (0.023) |
| post2 | -0.040*** | 0.008 | -0.018 | -0.022 | -0.032 | -0.016 | -0.019 | -0.012 | -0.021 | -0.075* | -0.004 | -0.08 | -0.038 | -0.078** | -0.085*** | -0.049** |
| | -0.012 | -0.033 | -0.016 | -0.014 | -0.02 | -0.017 | -0.031 | -0.022 | -0.036 | -0.045 | -0.084 | -0.054 | -0.069 | -0.033 | -0.025 | (0.022) |
| post3 | 0.045*** | 0.023 | -0.001 | 0.048*** | -0.001 | 0.053*** | 0.012 | 0.044 | 0.005 | -0.072 | 0.108 | -0.043 | 0.041 | 0.041* | 0.005 | -0.009 |
| | -0.011 | -0.045 | -0.018 | -0.013 | -0.023 | -0.019 | -0.025 | -0.045 | -0.03 | -0.047 | -0.089 | -0.064 | -0.074 | -0.024 | -0.041 | (0.044) |
| constant | 13.540*** | 12.787*** | 13.100*** | 13.593*** | 13.583*** | 13.572*** | 13.583*** | 13.550*** | 13.555*** | 13.584*** | 13.319*** | 13.337*** | 13.345*** | 13.354*** | 13.475*** | 12.768*** |
| | -0.016 | -0.034 | -0.017 | -0.02 | -0.024 | -0.021 | -0.029 | -0.02 | -0.028 | -0.044 | -0.088 | -0.067 | -0.077 | -0.023 | -0.024 | (0.020) |

Table S7: Results from Model 3 (single interrupted time-series using panel data from treated districts only)

| | BCG | HepB0 | OPV0 | DTP1 | OPV1 | DTP2 | OPV2 | DTP3 | OPV3 | M1 | DTPb | M2 | OPVb | TT1 | TT2 | Sessions |
|----------------|---------------------|---------------------|---------------------|---------------------|---------------------|---------------------|---------------------|---------------------|---------------------|---------------------|---------------------|---------------------|---------------------|---------------------|---------------------|----------------------|
| date | -0.025*** -0.006 | 0.037** -0.018 | 0.013 -0.008 | -0.013* -0.007 | 0.006 -0.013 | -0.021*** -0.008 | -0.001 -0.012 | -0.016 -0.01 | 0.005 -0.014 | 0.091*** -0.023 | -0.025 -0.038 | 0.026 -0.025 | -0.002 -0.031 | -0.02 -0.015 | 0.040*** -0.015 | 0.015 (0.011) |
| post1 | 0.072*** -0.022 | 0.027 -0.031 | 0.023 -0.016 | 0.108*** -0.02 | 0.092*** -0.026 | 0.136*** -0.013 | 0.110*** -0.021 | 0.137*** -0.015 | 0.113*** -0.021 | 0.115** -0.046 | 0.246*** -0.069 | 0.175*** -0.055 | 0.212*** -0.061 | -0.03 -0.027 | 0.013 -0.029 | 0.149*** (0.020) |
| post2 | -0.043*** -0.014 | 0.013 -0.027 | -0.014 -0.016 | -0.026* -0.014 | -0.035 -0.024 | -0.02 -0.013 | -0.022 -0.023 | -0.014 -0.017 | -0.023 -0.026 | -0.071* -0.042 | -0.009 -0.065 | -0.086* -0.044 | -0.043 -0.054 | -0.080** -0.031 | -0.092*** -0.026 | -0.050** (0.020) |
| post3 | 0.047*** -0.015 | 0.033 -0.037 | 0.009 -0.017 | 0.049*** -0.014 | 0.002 -0.02 | 0.056*** -0.019 | 0.016 -0.022 | 0.047* -0.025 | 0.009 -0.025 | -0.063* -0.038 | 0.115 -0.073 | -0.035 -0.049 | 0.049 -0.058 | 0.044* -0.027 | 0.008 -0.03 | -0.004 (0.040) |
| post1*urban | -0.156*** -0.036 | -0.174*** -0.047 | -0.245*** -0.044 | -0.075 -0.048 | -0.097** -0.049 | -0.041 -0.038 | -0.067* -0.038 | -0.003 -0.041 | -0.026 -0.042 | -0.188*** -0.045 | -0.129*** -0.047 | -0.005 -0.058 | -0.106*** -0.04 | 0.048 -0.056 | 0.017 -0.05 | -0.116*** (0.029) |
| post2*urban | 0.024 -0.049 | -0.03 -0.082 | -0.069 -0.086 | 0.044 -0.034 | 0.019 -0.039 | -0.032 -0.035 | -0.052 -0.035 | -0.015 -0.028 | -0.054* -0.029 | 0.013 -0.056 | -0.097*** -0.031 | -0.180*** -0.069 | -0.082*** -0.027 | 0.031 -0.039 | 0.092* -0.055 | 0.160*** (0.020) |
| post3*urban | -0.04 -0.052 | -0.156 -0.095 | -0.139* -0.08 | 0.094** -0.041 | 0.081 -0.054 | 0.006 -0.045 | 0.003 -0.053 | -0.029 -0.037 | -0.041 -0.05 | -0.002 -0.072 | -0.114** -0.051 | -0.139 -0.093 | -0.088* -0.052 | -0.061** -0.03 | -0.102*** -0.031 | 0.157*** (0.019) |
| post1*coverage | -0.137** -0.056 | -0.014 -0.063 | -0.036 -0.044 | -0.246*** -0.089 | -0.280*** -0.087 | -0.336*** -0.075 | -0.371*** -0.069 | -0.445*** -0.045 | -0.448*** -0.043 | -0.432*** -0.045 | -0.261** -0.109 | -0.335*** -0.118 | -0.335*** -0.113 | -0.201*** -0.047 | -0.196*** -0.042 | -0.105** (0.041) |
| post2*coverage | 0.093** -0.045 | -0.125 -0.078 | -0.072 -0.065 | 0.109** -0.045 | 0.082* -0.045 | 0.201*** -0.051 | 0.161*** -0.046 | 0.118* -0.071 | 0.142** -0.06 | -0.173*** -0.044 | 0.279*** -0.055 | 0.323*** -0.073 | 0.248*** -0.052 | 0.079*** -0.028 | 0.199*** -0.027 | -0.008 (0.043) |
| post3*coverage | -0.075* -0.042 | -0.214*** -0.065 | -0.214*** -0.049 | -0.181*** -0.055 | -0.218*** -0.057 | -0.154** -0.069 | -0.197*** -0.06 | -0.122* -0.072 | -0.123* -0.067 | -0.385*** -0.054 | -0.171*** -0.065 | -0.173** -0.08 | -0.178*** -0.061 | -0.068*** -0.024 | -0.037 -0.033 | -0.272*** (0.051) |
| Observations | 6,300 | 6,300 | 6,300 | 6,300 | 6,300 | 6,300 | 6,300 | 6,300 | 6,300 | 6,300 | 6,300 | 6,300 | 6,300 | 6,300 | 6,300 | 6,299 |

Table S8: Results from Model 4 (single interrupted time-series using panel data from treated districts, with regression control for the target population size)

| | BCG | HepB0 | OPV0 | DTP1 | OPV1 | DTP2 | OPV2 | DTP3 | OPV3 | M1 | DTPb | M2 | OPVb | TT1 | TT2 | Sessions |
|-----------------------|---------------------|---------------------|---------------------|---------------------|---------------------|---------------------|---------------------|---------------------|---------------------|---------------------|---------------------|---------------------|---------------------|--------------------|---------------------|----------------------|
| date_inyears | -0.019** -0.009 | 0.047*** -0.011 | 0.021*** -0.005 | -0.011 -0.007 | 0.008 -0.013 | -0.019** -0.008 | 0 -0.013 | -0.015 -0.011 | 0.007 -0.014 | 0.091*** -0.023 | -0.026 -0.038 | 0.025 -0.025 | -0.003 -0.031 | -0.016 -0.014 | 0.042*** -0.013 | 0.016 (0.011) |
| post1 | 0.077*** -0.023 | 0.037** -0.018 | 0.030*** -0.011 | 0.107*** -0.02 | 0.091*** -0.026 | 0.134*** -0.014 | 0.109*** -0.021 | 0.135*** -0.016 | 0.110*** -0.022 | 0.115** -0.046 | 0.247*** -0.07 | 0.177*** -0.055 | 0.214*** -0.061 | -0.022 -0.024 | 0.019 -0.024 | 0.150*** (0.020) |
| post2 | -0.037** -0.017 | 0.019 -0.018 | -0.006 -0.014 | -0.024 -0.015 | -0.033 -0.024 | -0.019 -0.014 | -0.021 -0.024 | -0.014 -0.018 | -0.023 -0.027 | -0.071* -0.043 | -0.007 -0.065 | -0.084* -0.044 | -0.041 -0.054 | -0.073** -0.031 | -0.085*** -0.023 | -0.049** (0.020) |
| post3 | 0.048*** -0.015 | 0.033 -0.023 | 0.012 -0.01 | 0.050*** -0.014 | 0.003 -0.021 | 0.057*** -0.019 | 0.016 -0.023 | 0.047* -0.025 | 0.009 -0.025 | -0.063* -0.038 | 0.117 -0.073 | -0.034 -0.049 | 0.05 -0.057 | 0.046* -0.026 | 0.012 -0.026 | -0.004 (0.039) |
| Lagged births (1000s) | 0.042*** -0.002 | 0.072*** -0.003 | 0.060*** -0.002 | 0.011*** -0.004 | 0.011** -0.004 | 0.008** -0.004 | 0.008** -0.004 | 0.005 -0.004 | 0.007 -0.005 | 0 -0.003 | 0.003 -0.003 | 0.004* -0.002 | 0.003 -0.003 | 0.037*** -0.003 | 0.032*** -0.004 | 0.006** (0.003) |
| post1*urban | -0.163*** -0.028 | -0.197*** -0.042 | -0.260*** -0.04 | -0.073 -0.045 | -0.094** -0.047 | -0.039 -0.038 | -0.064* -0.038 | -0.004 -0.04 | -0.026 -0.041 | -0.188*** -0.045 | -0.127*** -0.047 | -0.003 -0.058 | -0.105*** -0.04 | 0.044 -0.053 | 0.016 -0.048 | -0.116*** (0.028) |
| post2*urban | 0.002 -0.038 | -0.081 -0.067 | -0.105 -0.073 | 0.041 -0.033 | 0.018 -0.037 | -0.033 -0.034 | -0.053 -0.035 | -0.016 -0.028 | -0.055* -0.029 | 0.014 -0.056 | -0.097*** -0.03 | -0.180*** -0.068 | -0.083*** -0.027 | 0.01 -0.046 | 0.078 -0.061 | 0.159*** (0.020) |
| post3*urban | -0.058** -0.029 | -0.190*** -0.062 | -0.161*** -0.053 | 0.084** -0.042 | 0.072 -0.055 | -0.003 -0.045 | -0.006 -0.052 | -0.033 -0.036 | -0.047 -0.048 | -0.002 -0.072 | -0.115** -0.049 | -0.141 -0.091 | -0.090* -0.051 | -0.086* -0.045 | -0.117** -0.048 | 0.155*** (0.019) |
| post1*coverage | -0.150*** -0.055 | -0.046 -0.046 | -0.055* -0.033 | -0.249*** -0.089 | -0.284*** -0.087 | -0.339*** -0.075 | -0.373*** -0.068 | -0.446*** -0.044 | -0.449*** -0.041 | -0.432*** -0.045 | -0.261** -0.108 | -0.335*** -0.117 | -0.335*** -0.112 | -0.210*** -0.05 | -0.207*** -0.044 | -0.108*** (0.041) |
| post2*coverage | 0.107*** -0.035 | -0.092 -0.06 | -0.05 -0.05 | 0.112*** -0.043 | 0.085* -0.044 | 0.204*** -0.05 | 0.164*** -0.046 | 0.119* -0.071 | 0.143** -0.061 | -0.173*** -0.044 | 0.276*** -0.055 | 0.317*** -0.073 | 0.245*** -0.051 | 0.089*** -0.031 | 0.207*** -0.028 | -0.008 (0.042) |
| post3*coverage | -0.059* -0.035 | -0.190*** -0.044 | -0.188*** -0.038 | -0.175*** -0.053 | -0.212*** -0.055 | -0.151** -0.066 | -0.195*** -0.058 | -0.120* -0.07 | -0.120* -0.066 | -0.385*** -0.054 | -0.171*** -0.065 | -0.172** -0.08 | -0.178*** -0.061 | -0.047* -0.026 | -0.025 -0.04 | -0.270*** (0.051) |
| Observations | 6,300 | 6,300 | 6,300 | 6,300 | 6,300 | 6,300 | 6,300 | 6,300 | 6,300 | 6,300 | 6,300 | 6,300 | 6,300 | 6,300 | 6,300 | 6,299 |

Table S9: Results from Model 5 (controlled interrupted time-series using a matched set of control districts; matching on region, coverage, and MI participation)

| | BCG | HepB0 | OPV0 | DTP1 | OPV1 | DTP2 | OPV2 | DTP3 | OPV3 | M1 | DTPb | M2 | OPVb | TT1 | TT2 | Sessions |
|--------------------|---------------------|---------------------|---------------------|-------------------|------------------|-------------------|--------------------|--------------------|--------------------|---------------------|--------------------|---------------------|---------------------|---------------------|---------------------|----------------------|
| date_inyears | -0.025*** -0.009 | 0.064*** -0.018 | 0.009 -0.007 | -0.006 -0.009 | 0.005 -0.01 | -0.011 -0.01 | 0.001 -0.011 | -0.006 -0.01 | 0.004 -0.011 | 0.031** -0.014 | -0.024 -0.033 | 0.050** -0.022 | -0.004 -0.026 | 0.009 -0.01 | 0.043*** -0.012 | 0.012* (0.007) |
| post1 | 0.011 -0.017 | 0.018 -0.029 | -0.018 -0.015 | 0.031 -0.02 | 0.028 -0.025 | 0.044** -0.021 | 0.029 -0.022 | 0.021 -0.02 | 0.008 -0.023 | 0.022 -0.027 | 0.123** -0.061 | 0.031 -0.043 | 0.086* -0.05 | -0.032 -0.023 | -0.028 -0.024 | 0.008 (0.018) |
| post2 | -0.016 -0.022 | -0.034 -0.03 | -0.048** -0.019 | 0.014 -0.016 | 0.01 -0.018 | 0.036** -0.016 | 0.029* -0.017 | 0.040** -0.016 | 0.038** -0.018 | 0.037 -0.027 | 0.065 -0.055 | -0.170*** -0.034 | 0.028 -0.044 | -0.040* -0.022 | -0.042** -0.02 | 0.025* (0.013) |
| post3 | 0 -0.017 | -0.051 -0.036 | -0.052*** -0.016 | 0.009 -0.015 | -0.024 -0.023 | 0.019 -0.017 | -0.014 -0.024 | 0.007 -0.017 | -0.021 -0.023 | -0.034 -0.038 | 0.072 -0.078 | -0.209*** -0.068 | 0.003 -0.065 | 0.007 -0.017 | -0.015 -0.021 | 0.013 (0.015) |
| IMI*post1 | 0.052** -0.026 | -0.002 -0.022 | 0.028** -0.014 | 0.041 -0.033 | 0.038 -0.035 | 0.036 -0.026 | 0.037 -0.024 | 0.058*** -0.021 | 0.056** -0.023 | 0.070* -0.041 | 0.081 -0.062 | 0.073 -0.057 | 0.085 -0.059 | -0.004 -0.029 | 0.013 -0.022 | 0.118*** (0.026) |
| IMI*post2 | -0.001 -0.024 | 0.057** -0.024 | 0.049*** -0.016 | -0.02 -0.02 | -0.026 -0.022 | -0.041** -0.02 | -0.038** -0.019 | -0.047** -0.02 | -0.056*** -0.02 | -0.063** -0.031 | -0.045 -0.033 | 0.075** -0.035 | -0.043 -0.028 | -0.037** -0.017 | -0.049*** -0.012 | -0.044 (0.029) |
| IMI*post3 | 0.013 -0.025 | 0.082*** -0.026 | 0.061*** -0.018 | 0.006 -0.021 | -0.001 -0.023 | 0.003 -0.023 | 0.001 -0.022 | 0.014 -0.023 | 0.001 -0.022 | -0.031 -0.041 | 0.011 -0.042 | 0.127** -0.053 | 0.016 -0.039 | 0.012 -0.024 | -0.018 -0.016 | -0.010 (0.033) |
| date_inyears*IMI | -0.003 -0.01 | -0.01 -0.011 | 0.004 -0.007 | -0.005 -0.009 | -0.001 -0.01 | -0.001 -0.011 | 0.002 -0.009 | -0.001 -0.011 | 0.007 -0.009 | 0.039* -0.021 | 0.002 -0.016 | -0.016 -0.02 | 0.003 -0.014 | -0.020** -0.009 | 0.003 -0.007 | 0.005 (0.015) |
| IMI*post1*urban | -0.149*** -0.039 | -0.204*** -0.047 | -0.244*** -0.044 | -0.057 -0.051 | -0.078 -0.053 | -0.011 -0.042 | -0.033 -0.042 | 0.047 -0.042 | 0.024 -0.043 | -0.133*** -0.043 | -0.08 -0.052 | 0.078 -0.069 | -0.048 -0.044 | 0.042 -0.053 | 0.038 -0.048 | -0.021 (0.039) |
| IMI*post2*urban | 0.031 -0.051 | -0.046 -0.078 | -0.057 -0.076 | 0.042 -0.036 | 0.017 -0.041 | -0.049 -0.035 | -0.065* -0.036 | -0.023 -0.026 | -0.060** -0.026 | 0.044 -0.045 | -0.092*** -0.03 | -0.141** -0.063 | -0.077*** -0.022 | 0.007 -0.035 | 0.082* -0.048 | 0.136*** (0.030) |
| IMI*post3*urban | -0.038 -0.056 | -0.179** -0.088 | -0.137* -0.074 | 0.108** -0.045 | 0.111* -0.06 | 0.025 -0.049 | 0.036 -0.062 | -0.007 -0.042 | -0.008 -0.063 | 0.006 -0.067 | -0.09 -0.056 | -0.11 -0.096 | -0.058 -0.059 | -0.071** -0.036 | -0.092*** -0.036 | 0.135*** (0.029) |
| IMI*post1*coverage | 0.032 -0.047 | -0.035 -0.126 | 0.115 -0.074 | 0.093* -0.055 | 0.017 -0.058 | -0.039 -0.094 | -0.079 -0.092 | -0.212*** -0.07 | -0.187** -0.08 | 0.061 -0.07 | -0.145* -0.086 | -0.039 -0.128 | -0.192** -0.085 | -0.196*** -0.039 | 0.021 -0.062 | -0.225*** (0.032) |
| IMI*post2*coverage | 0.069 -0.047 | -0.272*** -0.075 | -0.099* -0.055 | 0.081 -0.05 | 0.019 -0.052 | 0.136** -0.059 | 0.098* -0.059 | 0.048 -0.074 | 0.098 -0.071 | -0.211*** -0.08 | 0.166** -0.072 | 0.412*** -0.074 | 0.126* -0.07 | 0.02 -0.048 | 0.247*** -0.05 | -0.203*** (0.032) |
| IMI*post3*coverage | 0.249 -0.081 | -0.384*** -0.138 | -0.159 -0.123 | 0.086 -0.057 | 0.055 -0.057 | 0.140** -0.069 | 0.129** -0.052 | 0.109* -0.06 | 0.182*** -0.056 | -0.098 -0.096 | 0.103 -0.082 | 0.267*** -0.092 | 0.097 -0.077 | 0.005 -0.038 | 0.300*** -0.055 | -0.185 (0.033) |
| Observations | 12,924 | 12,924 | 12,924 | 12,924 | 12,924 | 12,924 | 12,924 | 12,924 | 12,924 | 12,924 | 12,924 | 12,924 | 12,924 | 12,924 | 12,912 | 12,908 |

Table S10: Results from Model 6 (controlled interrupted time-series with matching by state, coverage, and MI participation)

| | BCG | HepB0 | OPV0 | DTP1 | OPV1 | DTP2 | OPV2 | DTP3 | OPV3 | M1 | DTPb | M2 | OPVb | TT1 | TT2 | Sessions |
|--------------------|---------|-----------|-----------|----------|-----------|----------|----------|-----------|----------|-----------|-----------|----------|----------|-----------|-----------|----------|
| date_inyears | -0.004 | 0.079*** | 0.031*** | 0.013 | 0.024** | 0.012 | 0.024* | 0.016 | 0.027** | 0.086*** | -0.015 | 0.039* | 0.019 | 0.011 | 0.055*** | -0.004 |
| | -0.009 | -0.019 | -0.008 | -0.009 | -0.011 | -0.011 | -0.012 | -0.013 | -0.013 | -0.011 | -0.037 | -0.022 | -0.029 | -0.008 | -0.008 | -0.009 |
| post1 | 0.004 | -0.018 | -0.021 | 0.014 | 0.007 | 0.009 | -0.006 | -0.008 | -0.022 | -0.027 | 0.114* | 0.028 | 0.056 | -0.024 | -0.036** | 0.004 |
| | -0.015 | -0.033 | -0.016 | -0.019 | -0.022 | -0.024 | -0.024 | -0.023 | -0.023 | -0.026 | -0.065 | -0.043 | -0.052 | -0.019 | -0.018 | -0.015 |
| post2 | -0.016 | -0.062** | -0.053*** | 0.007 | 0.002 | 0.023 | 0.015 | 0.02 | 0.014 | -0.032 | 0.082 | -0.041 | 0.015 | -0.035** | -0.041*** | -0.016 |
| | -0.019 | -0.03 | -0.016 | -0.016 | -0.019 | -0.019 | -0.021 | -0.022 | -0.023 | -0.02 | -0.062 | -0.038 | -0.053 | -0.018 | -0.014 | -0.019 |
| post3 | -0.006 | -0.057 | -0.055*** | 0.013 | -0.012 | 0.018 | -0.009 | 0.013 | -0.008 | -0.098*** | 0.115 | -0.058 | 0.018 | 0.014 | -0.023 | -0.006 |
| | -0.019 | -0.039 | -0.017 | -0.015 | -0.02 | -0.018 | -0.023 | -0.021 | -0.023 | -0.029 | -0.081 | -0.049 | -0.064 | -0.013 | -0.015 | -0.019 |
| IMI*post1 | 0.041** | 0.03 | 0.025* | 0.040* | 0.043* | 0.046* | 0.053** | 0.072*** | 0.066*** | 0.078*** | 0.079* | 0.090* | 0.097** | -0.021 | 0.018 | 0.041** |
| | -0.018 | -0.023 | -0.013 | -0.023 | -0.023 | -0.024 | -0.023 | -0.017 | -0.017 | -0.026 | -0.045 | -0.052 | -0.043 | -0.023 | -0.017 | -0.018 |
| IMI*post2 | 0.01 | 0.092*** | 0.049*** | 0.009 | 0.008 | -0.009 | -0.002 | -0.01 | -0.02 | 0.037** | -0.043*** | -0.03 | -0.022 | -0.034*** | -0.042*** | 0.01 |
| | -0.019 | -0.014 | -0.012 | -0.013 | -0.012 | -0.015 | -0.013 | -0.016 | -0.013 | -0.016 | -0.015 | -0.019 | -0.016 | -0.011 | -0.01 | -0.019 |
| IMI*post3 | 0.006 | 0.079*** | 0.038** | 0.009 | 0.001 | 0.005 | 0.002 | 0.007 | -0.016 | 0.025* | -0.022 | -0.032 | 0.001 | -0.019 | -0.029* | 0.006 |
| | -0.022 | -0.02 | -0.02 | -0.016 | -0.013 | -0.019 | -0.016 | -0.019 | -0.014 | -0.015 | -0.019 | -0.02 | -0.02 | -0.014 | -0.015 | -0.022 |
| date_inyears*IMI | -0.019 | -0.018** | -0.012* | -0.018** | -0.019*** | -0.015 | -0.015* | -0.015* | -0.005 | -0.01 | -0.001 | -0.004 | -0.008 | -0.011** | 0.001 | -0.019 |
| | -0.009 | -0.007 | -0.006 | -0.008 | -0.007 | -0.01 | -0.009 | -0.008 | -0.006 | -0.008 | -0.008 | -0.009 | -0.008 | -0.005 | -0.005 | -0.009 |
| IMI*post1*urban | -0.051 | -0.193*** | -0.153*** | 0.061 | 0.07 | 0.154*** | 0.156*** | 0.241*** | 0.226*** | 0.016 | 0.05 | 0.248*** | 0.093 | 0.163*** | 0.186*** | -0.051 |
| | -0.043 | -0.048 | -0.043 | -0.061 | -0.063 | -0.057 | -0.057 | -0.053 | -0.051 | -0.05 | -0.072 | -0.094 | -0.062 | -0.049 | -0.046 | -0.043 |
| IMI*post2*urban | 0.117* | -0.018 | 0.019 | 0.124** | 0.126** | 0.02 | 0.02 | 0.056* | 0.033 | 0.195*** | -0.04 | -0.151** | -0.014 | 0.052 | 0.117*** | 0.117* |
| | -0.064 | -0.084 | -0.079 | -0.053 | -0.056 | -0.048 | -0.049 | -0.034 | -0.03 | -0.037 | -0.045 | -0.071 | -0.032 | -0.033 | -0.033 | -0.064 |
| IMI*post3*urban | 0.098 | -0.145 | -0.047 | 0.228*** | 0.256*** | 0.160*** | 0.179*** | 0.121** | 0.123** | 0.129** | 0.03 | 0.003 | 0.077 | -0.016 | 0.016 | 0.098 |
| | -0.069 | -0.109 | -0.098 | -0.05 | -0.062 | -0.053 | -0.065 | -0.049 | -0.062 | -0.052 | -0.072 | -0.104 | -0.07 | -0.042 | -0.032 | -0.069 |
| IMI*post1*coverage | 0.07 | -0.115 | 0.039 | 0.09 | 0.04 | -0.062 | -0.096 | -0.341*** | -0.280** | 0 | -0.162 | -0.327** | -0.246** | -0.187*** | 0.037 | 0.07 |
| | -0.082 | -0.175 | -0.099 | -0.089 | -0.083 | -0.123 | -0.126 | -0.11 | -0.109 | -0.059 | -0.111 | -0.149 | -0.1 | -0.035 | -0.081 | -0.082 |
| IMI*post2*coverage | 0.165 | -0.453*** | -0.102 | 0.160** | 0.125** | 0.256*** | 0.228*** | 0.122* | 0.198*** | -0.324*** | 0.270*** | 0.308*** | 0.209** | 0.131*** | 0.368*** | 0.165 |
| | -0.08 | -0.122 | -0.08 | -0.068 | -0.063 | -0.064 | -0.064 | -0.07 | -0.069 | -0.091 | -0.101 | -0.093 | -0.089 | -0.032 | -0.076 | -0.08 |
| IMI*post3*coverage | 0.339 | -0.488** | -0.211 | 0.143* | 0.147** | 0.218*** | 0.259*** | 0.212*** | 0.331*** | 0.088 | 0.331*** | 0.494*** | 0.309*** | 0.230*** | 0.559*** | 0.339 |
| | -0.135 | -0.214 | -0.177 | -0.078 | -0.065 | -0.075 | -0.06 | -0.072 | -0.06 | -0.066 | -0.1 | -0.132 | -0.088 | -0.058 | -0.072 | -0.135 |
| Observations | 7,128 | 7,128 | 7,128 | 7,128 | 7,128 | 7,128 | 7,128 | 7,128 | 7,128 | 7,128 | 7,128 | 7,128 | 7,128 | 7,128 | 7,128 | 7,128 |

Table S11: Results from Model 7 (controlled interrupted time-series using non-contiguous control districts)

| | BCG | HepB0 | OPV0 | DTP1 | OPV1 | DTP2 | OPV2 | DTP3 | OPV3 | M1 | DTPb | M2 | OPVb | TT1 | TT2 | Sessions |
|--------------------|-----------|-----------|-----------|-----------|-----------|-----------|-----------|-----------|-----------|-----------|-----------|-----------|-----------|-----------|-----------|-----------|
| date_inyears | -0.001 | 0.040* | 0.012 | 0.018 | 0.029* | 0.001 | 0.011 | -0.01 | 0 | 0.073*** | 0 | -0.045 | -0.034 | 0.017 | 0.015 | -0.046*** |
| | -0.015 | -0.022 | -0.018 | -0.016 | -0.015 | -0.017 | -0.016 | -0.017 | -0.016 | -0.022 | -0.029 | -0.03 | -0.027 | -0.014 | -0.013 | (0.018) |
| post1 | -0.034 | -0.015 | -0.039 | -0.033 | -0.039 | 0.015 | 0 | 0.031 | 0.018 | 0.019 | 0.039 | 0.062 | 0.045 | -0.019 | 0.028 | 0.024 |
| | -0.027 | -0.041 | -0.035 | -0.027 | -0.026 | -0.025 | -0.023 | -0.023 | -0.022 | -0.063 | -0.051 | -0.051 | -0.044 | -0.021 | -0.018 | (0.019) |
| post2 | -0.016 | 0 | -0.014 | -0.042 | -0.047 | -0.031 | -0.032 | -0.002 | -0.004 | -0.100** | -0.111** | 0.021 | 0.007 | -0.047** | 0.005 | 0.045 |
| | -0.04 | -0.049 | -0.043 | -0.032 | -0.03 | -0.032 | -0.028 | -0.029 | -0.028 | -0.045 | -0.044 | -0.047 | -0.042 | -0.021 | -0.019 | (0.028) |
| post3 | -0.01 | -0.053 | -0.056 | -0.005 | -0.036 | 0.009 | -0.019 | 0.012 | -0.014 | -0.086** | -0.091 | 0.081 | 0.037 | -0.023 | -0.011 | 0.082** |
| | -0.037 | -0.049 | -0.044 | -0.038 | -0.037 | -0.037 | -0.035 | -0.036 | -0.033 | -0.036 | -0.062 | -0.067 | -0.06 | -0.022 | -0.019 | (0.035) |
| IMI*post1 | 0.132*** | 0.054 | 0.079 | 0.176*** | 0.168*** | 0.130*** | 0.125*** | 0.095** | 0.090** | 0.109** | 0.124** | 0.166** | 0.150** | -0.031 | -0.035 | 0.099*** |
| | -0.04 | -0.064 | -0.051 | -0.046 | -0.049 | -0.043 | -0.044 | -0.043 | -0.043 | -0.048 | -0.06 | -0.072 | -0.068 | -0.038 | -0.027 | (0.037) |
| IMI*post2 | -0.017 | -0.014 | -0.016 | 0.049 | 0.043 | 0.035 | 0.032 | 0 | -0.007 | 0.02 | 0.052 | -0.007 | -0.03 | -0.027 | -0.102*** | -0.093* |
| | -0.062 | -0.093 | -0.075 | -0.053 | -0.057 | -0.055 | -0.056 | -0.053 | -0.051 | -0.038 | -0.069 | -0.072 | -0.067 | -0.037 | -0.028 | (0.052) |
| IMI*post3 | 0.063 | 0.093 | 0.075 | 0.055 | 0.04 | 0.04 | 0.031 | 0.028 | 0.019 | 0.03 | 0.045 | 0.024 | 0.002 | 0.063 | 0.017 | -0.091 |
| | -0.061 | -0.1 | -0.079 | -0.059 | -0.064 | -0.062 | -0.063 | -0.06 | -0.058 | -0.042 | -0.079 | -0.083 | -0.077 | -0.038 | -0.029 | (0.059) |
| date_inyears*IMI | -0.033 | -0.002 | -0.002 | -0.047* | -0.039 | -0.027 | -0.02 | -0.005 | 0.005 | 0.016 | 0.025 | 0.021 | 0.033 | -0.034* | 0.031** | 0.068** |
| | -0.024 | -0.043 | -0.033 | -0.024 | -0.026 | -0.028 | -0.027 | -0.029 | -0.025 | -0.021 | -0.034 | -0.038 | -0.035 | -0.02 | -0.012 | (0.030) |
| IMI*post1*urban | -0.156*** | -0.174*** | -0.245*** | -0.075 | -0.097** | -0.041 | -0.067* | -0.003 | -0.026 | -0.188*** | -0.005 | -0.129*** | -0.106*** | 0.048 | 0.017 | -0.116*** |
| | -0.036 | -0.047 | -0.044 | -0.048 | -0.049 | -0.038 | -0.038 | -0.041 | -0.042 | -0.045 | -0.057 | -0.047 | -0.04 | -0.056 | -0.05 | (0.029) |
| IMI*post2*urban | 0.024 | -0.03 | -0.069 | 0.044 | 0.019 | -0.032 | -0.052 | -0.015 | -0.054* | 0.013 | -0.180*** | -0.097*** | -0.082*** | 0.031 | 0.092* | 0.160*** |
| | -0.049 | -0.082 | -0.086 | -0.034 | -0.039 | -0.035 | -0.035 | -0.028 | -0.029 | -0.056 | -0.069 | -0.031 | -0.027 | -0.039 | -0.055 | (0.020) |
| IMI*post3*urban | -0.04 | -0.156 | -0.139* | 0.094** | 0.081 | 0.006 | 0.003 | -0.029 | -0.041 | -0.002 | -0.139 | -0.114** | -0.088* | -0.061** | -0.102*** | 0.157*** |
| | -0.052 | -0.095 | -0.08 | -0.041 | -0.054 | -0.045 | -0.053 | -0.037 | -0.05 | -0.072 | -0.093 | -0.051 | -0.052 | -0.03 | -0.031 | (0.019) |
| IMI*post1*coverage | -0.137*** | -0.014 | -0.036 | -0.246*** | -0.280*** | -0.336*** | -0.371*** | -0.445*** | -0.448*** | -0.432*** | -0.335*** | -0.261** | -0.335*** | -0.201*** | -0.196*** | -0.105** |
| | -0.056 | -0.063 | -0.044 | -0.089 | -0.087 | -0.075 | -0.069 | -0.045 | -0.043 | -0.045 | -0.118 | -0.109 | -0.113 | -0.047 | -0.042 | (0.041) |
| IMI*post2*coverage | 0.093** | -0.125 | -0.072 | 0.109** | 0.082* | 0.201*** | 0.161*** | 0.118* | 0.142** | -0.173*** | 0.323*** | 0.279*** | 0.248*** | 0.079*** | 0.199*** | -0.008 |
| | -0.045 | -0.078 | -0.065 | -0.045 | -0.045 | -0.051 | -0.046 | -0.071 | -0.06 | -0.044 | -0.073 | -0.055 | -0.052 | -0.028 | -0.027 | (0.043) |
| IMI*post3*coverage | -0.075 | -0.214*** | -0.214*** | -0.181*** | -0.218*** | -0.154** | -0.197*** | -0.122* | -0.123* | -0.385*** | -0.173** | -0.171*** | -0.178*** | -0.068*** | -0.037 | -0.272 |
| | -0.042 | -0.065 | -0.049 | -0.055 | -0.057 | -0.069 | -0.06 | -0.072 | -0.067 | -0.054 | -0.08 | -0.065 | -0.061 | -0.024 | -0.033 | (0.051) |
| Observations | 14,220 | 14,220 | 14,220 | 14,220 | 14,220 | 14,220 | 14,220 | 14,220 | 14,220 | 14,220 | 14,220 | 14,220 | 14,220 | 14,220 | 14,189 | 14,202 |

Table S12: Results from Model 8 (controlled interrupted time-series using non-contiguous control districts matched on coverage and MI participation)

| | BCG | HepB0 | OPV0 | DTP1 | OPV1 | DTP2 | OPV2 | DTP3 | OPV3 | MI | DTPb | M2 | OPVb | TT1 | TT2 | Sessions |
|--------------------|-----------|-----------|-----------|-----------|-----------|-----------|-----------|-----------|-----------|-----------|-----------|-----------|-----------|-----------|-----------|-----------|
| date_inyears | -0.01 | 0.047** | 0.007 | 0.009 | 0.016 | -0.009 | -0.001 | -0.018 | -0.011 | 0.060* | -0.044 | 0.033 | -0.033 | 0.014 | 0.029** | -0.042** |
| | -0.015 | -0.021 | -0.017 | -0.01 | -0.011 | -0.012 | -0.011 | -0.013 | -0.013 | -0.031 | -0.027 | -0.026 | -0.024 | -0.012 | -0.013 | (0.017) |
| post1 | -0.024 | 0.001 | -0.035 | -0.032** | -0.028 | 0.014 | 0.005 | 0.036** | 0.030* | 0.038 | 0.055 | 0.035 | 0.04 | -0.006 | 0.01 | 0.019 |
| | -0.022 | -0.034 | -0.03 | -0.016 | -0.018 | -0.019 | -0.017 | -0.018 | -0.017 | -0.052 | -0.048 | -0.043 | -0.041 | -0.02 | -0.015 | (0.018) |
| post2 | -0.02 | -0.007 | -0.033 | -0.048** | -0.046** | -0.026 | -0.029 | -0.012 | -0.008 | 0.014 | 0.025 | -0.064 | 0.011 | -0.037** | -0.016 | 0.057** |
| | -0.033 | -0.043 | -0.04 | -0.021 | -0.021 | -0.024 | -0.021 | -0.025 | -0.023 | -0.065 | -0.042 | -0.054 | -0.037 | -0.018 | -0.018 | (0.027) |
| post3 | -0.029 | -0.056 | -0.067 | -0.027 | -0.042* | 0.001 | -0.019 | 0.007 | -0.009 | -0.137** | 0.078 | -0.190*** | 0.034 | -0.022 | -0.047** | 0.091*** |
| | -0.035 | -0.05 | -0.043 | -0.022 | -0.024 | -0.027 | -0.025 | -0.027 | -0.026 | -0.059 | -0.062 | -0.061 | -0.055 | -0.019 | -0.019 | (0.030) |
| IMI*post1 | 0.110** | 0.036 | 0.069 | 0.178*** | 0.165*** | 0.134*** | 0.129*** | 0.089** | 0.078* | 0.084** | 0.185** | 0.150* | 0.168** | -0.066 | -0.047* | 0.107*** |
| | -0.045 | -0.075 | -0.062 | -0.04 | -0.047 | -0.042 | -0.043 | -0.044 | -0.044 | -0.039 | -0.077 | -0.081 | -0.072 | -0.045 | -0.028 | (0.030) |
| IMI*post2 | -0.05 | -0.05 | -0.04 | 0.045 | 0.034 | 0.013 | 0.015 | -0.011 | -0.028 | -0.123*** | -0.015 | 0.02 | -0.043 | -0.045 | -0.097*** | -0.101** |
| | -0.064 | -0.104 | -0.087 | -0.046 | -0.054 | -0.054 | -0.055 | -0.055 | -0.055 | -0.039 | -0.074 | -0.092 | -0.067 | -0.043 | -0.028 | (0.048) |
| IMI*post3 | 0.059 | 0.083 | 0.063 | 0.061 | 0.032 | 0.027 | 0.01 | 0.009 | -0.017 | 0.04 | 0.024 | 0.119 | -0.007 | 0.047 | 0.028 | -0.102** |
| | -0.073 | -0.124 | -0.097 | -0.051 | -0.058 | -0.061 | -0.062 | -0.061 | -0.062 | -0.046 | -0.085 | -0.105 | -0.076 | -0.045 | -0.031 | (0.051) |
| date_inyears*IMI | -0.022 | 0.006 | 0.016 | -0.038* | -0.03 | -0.016 | -0.009 | 0.009 | 0.022 | 0.035 | 0.013 | -0.02 | 0.027 | -0.029 | 0.024 | 0.054** |
| | -0.029 | -0.05 | -0.04 | -0.021 | -0.026 | -0.027 | -0.026 | -0.029 | -0.026 | -0.022 | -0.039 | -0.044 | -0.035 | -0.022 | -0.015 | (0.028) |
| IMI*post1*urban | -0.282*** | -0.315*** | -0.319*** | -0.176*** | -0.217*** | -0.154*** | -0.192*** | -0.104** | -0.152*** | -0.249*** | -0.289*** | -0.151*** | -0.265*** | -0.123* | -0.142** | -0.302*** |
| | -0.042 | -0.063 | -0.05 | -0.047 | -0.046 | -0.036 | -0.039 | -0.044 | -0.041 | -0.039 | -0.038 | -0.04 | -0.031 | -0.068 | -0.064 | (0.028) |
| IMI*post2*urban | -0.098** | -0.191** | -0.186*** | -0.03 | -0.088** | -0.117*** | -0.163*** | -0.111*** | -0.174*** | -0.158** | -0.257*** | -0.243*** | -0.248*** | -0.110** | 0.003 | 0.004 |
| | -0.042 | -0.075 | -0.068 | -0.036 | -0.041 | -0.038 | -0.037 | -0.035 | -0.033 | -0.062 | -0.038 | -0.09 | -0.038 | -0.048 | -0.083 | (0.024) |
| IMI*post3*urban | -0.157*** | -0.330*** | -0.274*** | 0.026 | -0.042 | -0.085 | -0.131*** | -0.128*** | -0.194*** | -0.071 | -0.232*** | -0.133 | -0.218*** | -0.215*** | -0.282*** | -0.005 |
| | -0.049 | -0.1 | -0.09 | -0.043 | -0.048 | -0.052 | -0.048 | -0.043 | -0.043 | -0.095 | -0.073 | -0.113 | -0.065 | -0.038 | -0.036 | (0.024) |
| IMI*post1*coverage | 0.099* | 0.042 | 0.049 | -0.027 | -0.053 | -0.14 | -0.166 | -0.318*** | -0.286*** | -0.259*** | -0.157 | -0.258 | -0.268* | 0.017 | -0.005 | -0.080 |
| | -0.058 | -0.078 | -0.056 | -0.103 | -0.101 | -0.107 | -0.106 | -0.084 | -0.079 | -0.053 | -0.141 | -0.166 | -0.148 | -0.059 | -0.061 | (0.048) |
| IMI*post2*coverage | 0.278*** | -0.085 | -0.011 | 0.218*** | 0.207*** | 0.370*** | 0.334*** | 0.287*** | 0.333*** | 0.102* | 0.431*** | 0.504*** | 0.404*** | 0.285*** | 0.346*** | 0.113** |
| | -0.058 | -0.103 | -0.085 | -0.06 | -0.066 | -0.055 | -0.057 | -0.079 | -0.072 | -0.061 | -0.074 | -0.105 | -0.076 | -0.042 | -0.058 | (0.054) |
| IMI*post3*coverage | 0.241 | -0.206** | -0.049 | 0.013 | 0.04 | 0.087 | 0.084* | 0.077 | 0.143*** | -0.046 | 0.038 | 0.132** | 0.063 | 0.095** | 0.238*** | 0.037 |
| | -0.062 | -0.101 | -0.088 | -0.053 | -0.063 | -0.064 | -0.051 | -0.059 | -0.049 | -0.048 | -0.076 | -0.064 | -0.067 | -0.04 | -0.051 | (0.045) |
| Observations | 12,564 | 12,564 | 12,564 | 12,564 | 12,564 | 12,564 | 12,564 | 12,564 | 12,564 | 12,564 | 12,564 | 12,564 | 12,564 | 12,564 | 12,533 | 12,547 |

References

- [1] J. L. Bernal, S. Cummins, and A. Gasparrini, “Interrupted time series regression for the evaluation of public health interventions: a tutorial,” *Int. J. Epidemiol.*, p. dyw098, Jun. 2016, doi: 10.1093/ije/dyw098.
- [2] J. L. Bernal, S. Cummins, and A. Gasparrini, “The use of controls in interrupted time series studies of public health interventions,” *International Journal of Epidemiology*, vol. 47, no. 6, pp. 2082–2093, Dec. 2018, doi: 10.1093/ije/dyy135.
- [3] S. Iacus, G. King, and G. Porro, *CEM: Coarsened Exact Matching Software*. .