

# Supplemental Information

M. Català<sup>1,2</sup>, D. Pino<sup>1</sup>, M. Marchena<sup>1</sup>, P. Palacios<sup>1</sup>, T. Urdiales<sup>1</sup>, P.J. Cardona<sup>2,3,4</sup>, S. Alonso<sup>1</sup>, D. López-Codina<sup>1</sup>, C. Prats<sup>1,2</sup>, and E. Alvarez-Lacalle<sup>1</sup>

<sup>1</sup>*Departament de Física. Universitat Politècnica de Catalunya-BarcelonaTech. Barcelona. Spain.*

<sup>2</sup>*Comparative Medicine and Bioimage Centre of Catalonia (CMCiB), Fundació Institut d'Investigació en Ciències de la Salut Germans Trias i Pujol, Badalona, Catalonia, Spain.*

<sup>3</sup>*Experimental Tuberculosis Unit (UTE). Fundació Institut Germans Trias i Pujol (IGTP). Universitat Autònoma de Barcelona (UAB). Edifici Mar. Can Ruti Campus. Crtra. de Can Ruti, Camí de les Escoles, s/n, 08916, Badalona, Catalonia, Spain.*

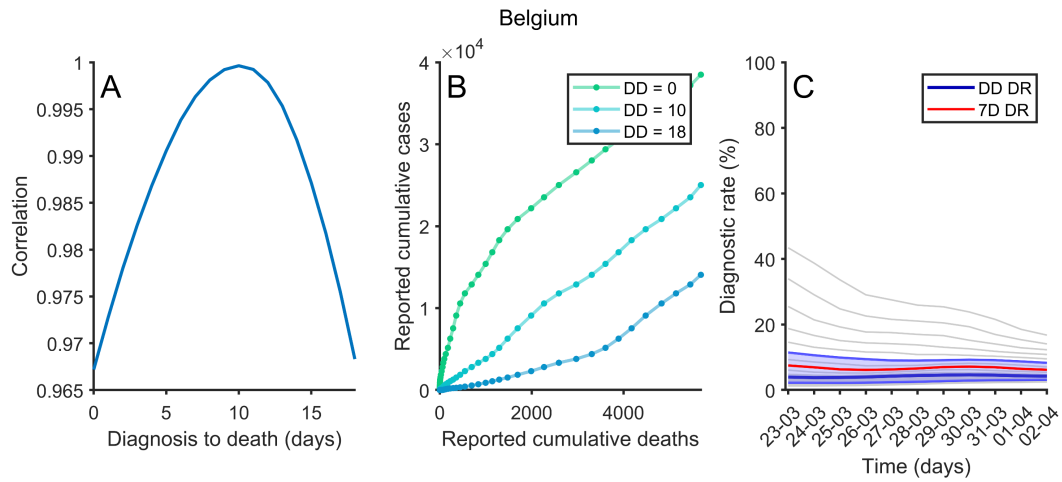
<sup>4</sup>*Centro de Investigación Biomédica en Red de Enfermedades Respiratorias (CIBERES). Av. Monforte de Lemos, 3-5. Pabellón 11. Planta 0. 28029, Madrid, Spain.*

## Contents

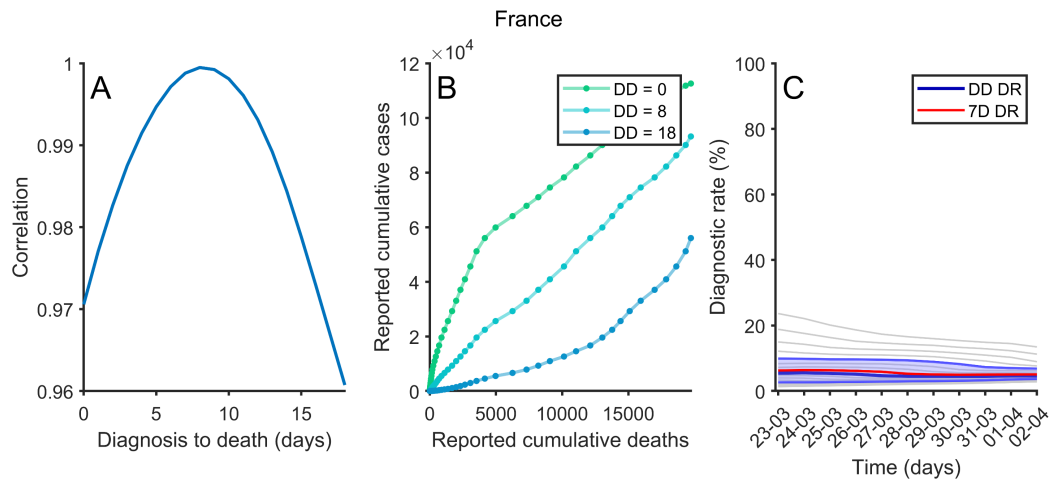
In this supplemental material, we provide supplemental information about four features:

- We show the correlation to obtain DtD for each country and the corresponding evolution of the diagnostic rate.
- We show for each country the evolution of people recovered from the infection and the attack rate in the last 14 days  $A_{14}$ .
- We provide the demonstration that  $\rho_3$  is also unbiased showing the correlations between  $\rho_3$  computed from reported data and estimated real data.

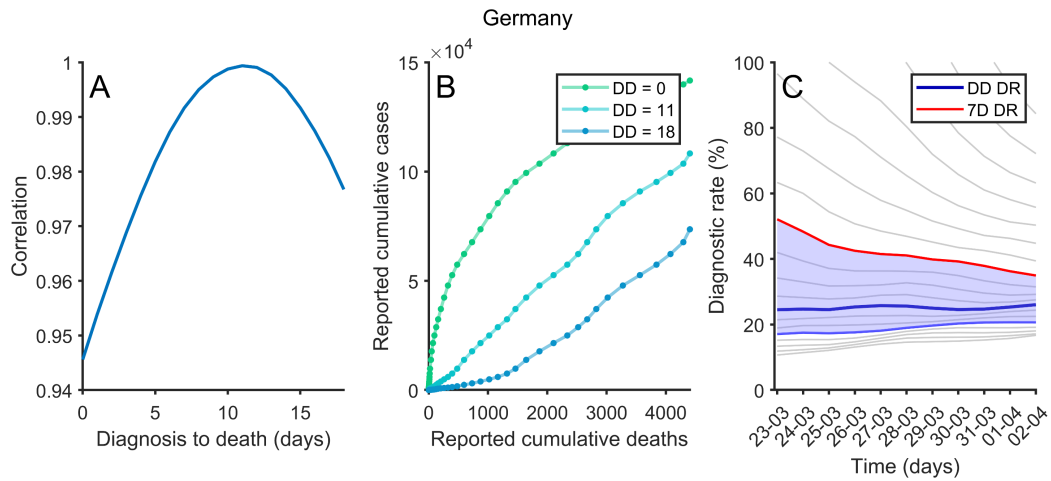
## Diagnostic rate and its evolution for each country



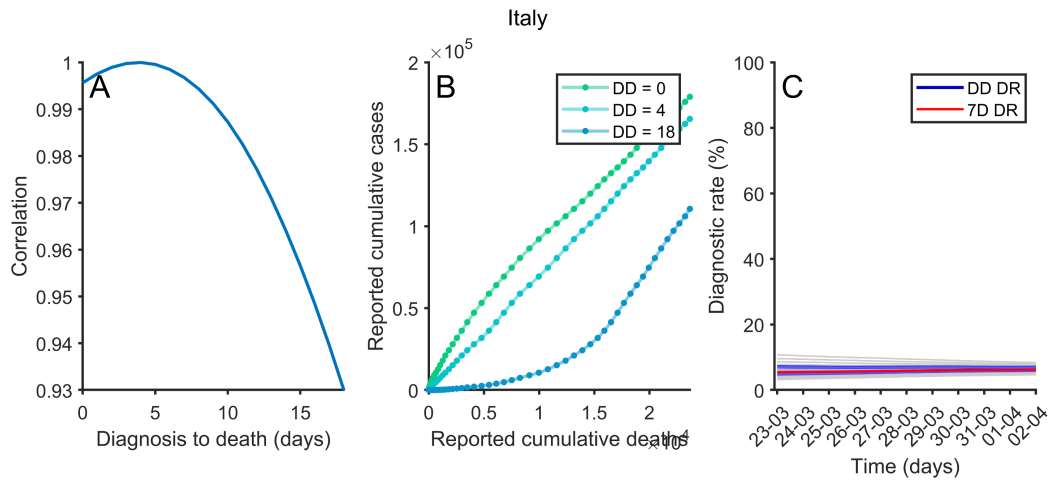
**(A)** Correlation between reported number of cumulative cases and reported number of cumulative deaths using different DtD times. **(B)** Alignment between reported number of cumulative cases and reported number of cumulative deaths using three different detection delays (DD). **(C)** Diagnostic rate along time using different DD, from top to bottom 0 to 18 days. In red, 7-day detection rate and, in blue, Delay to Detection Diagnostic Rate.



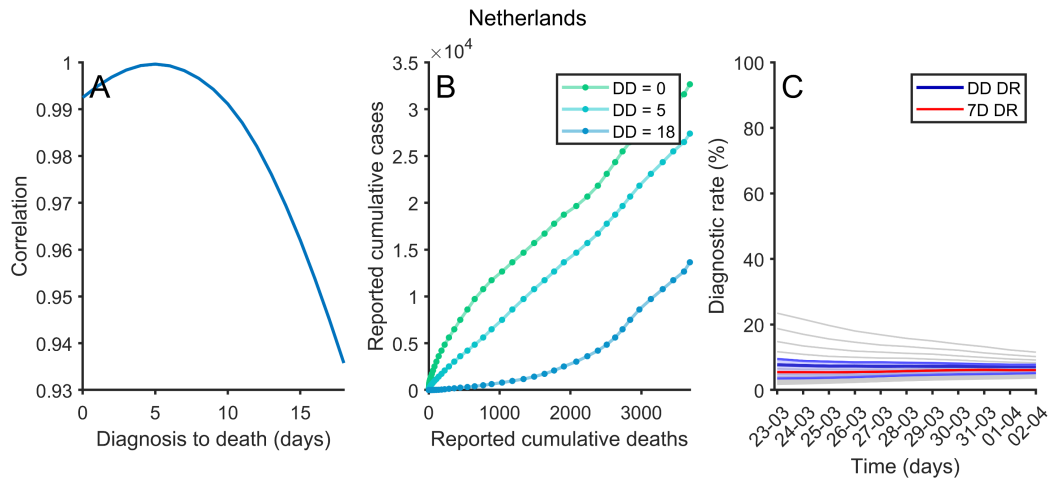
**(A)** Correlation between reported number of cumulative cases and reported number of cumulative deaths using different DtD times. **(B)** Alignment between reported number of cumulative cases and reported number of cumulative deaths using three different detection delays (DD). **(C)** Diagnostic rate along time using different DD, from top to bottom 0 to 18 days. In red, 7-day detection rate and, in blue, Delay to Detection Diagnostic Rate.



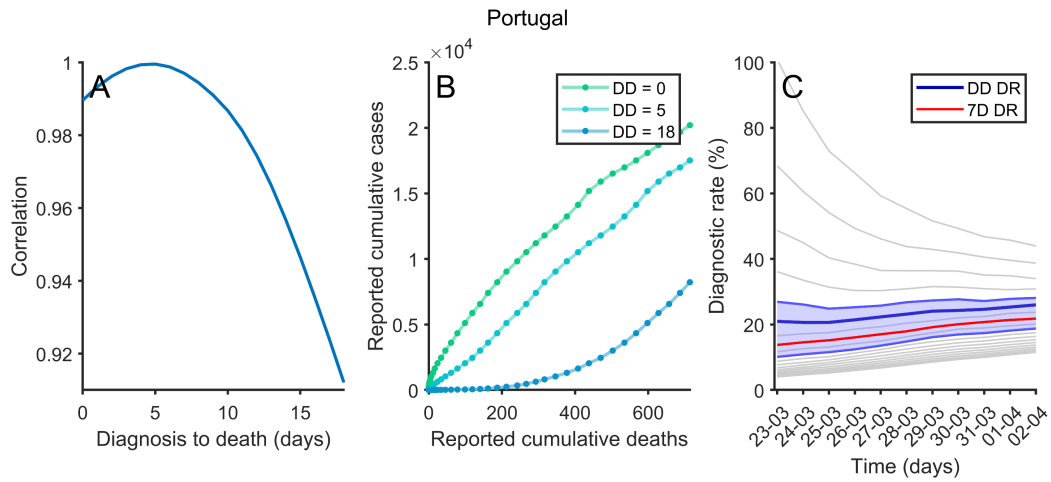
**(A)** Correlation between reported number of cumulative cases and reported number of cumulative deaths using different DtD times. **(B)** Alignment between reported number of cumulative cases and reported number of cumulative deaths using three different detection delays (DD). **(C)** Diagnostic rate along time using different DD, from top to bottom 0 to 18 days. In red, 7-day detection rate and, in blue, Delay to Detection Diagnostic Rate.



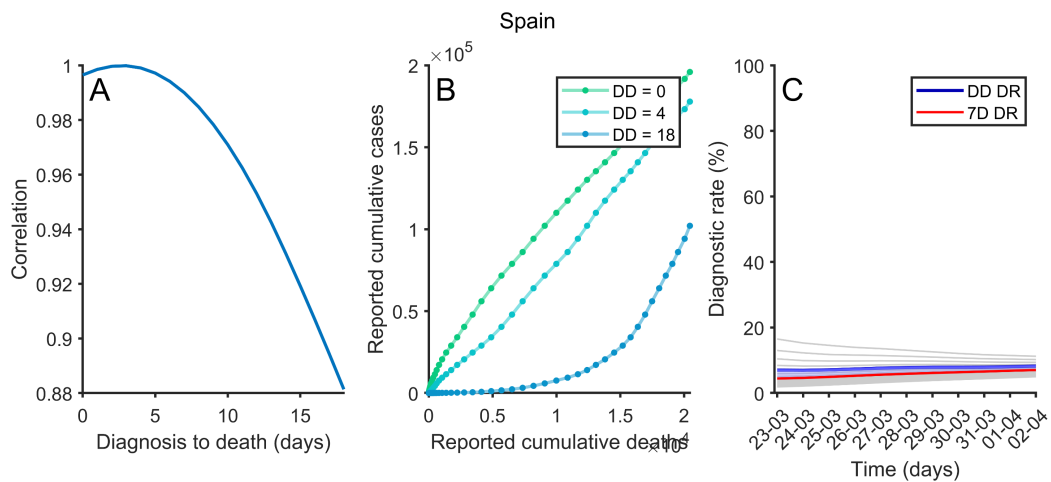
**(A)** Correlation between reported number of cumulative cases and reported number of cumulative deaths using different DtD times. **(B)** Alignment between reported number of cumulative cases and reported number of cumulative deaths using three different detection delays (DD). **(C)** Diagnostic rate along time using different DD, from top to bottom 0 to 18 days. In red, 7-day detection rate and, in blue, Delay to Detection Diagnostic Rate.



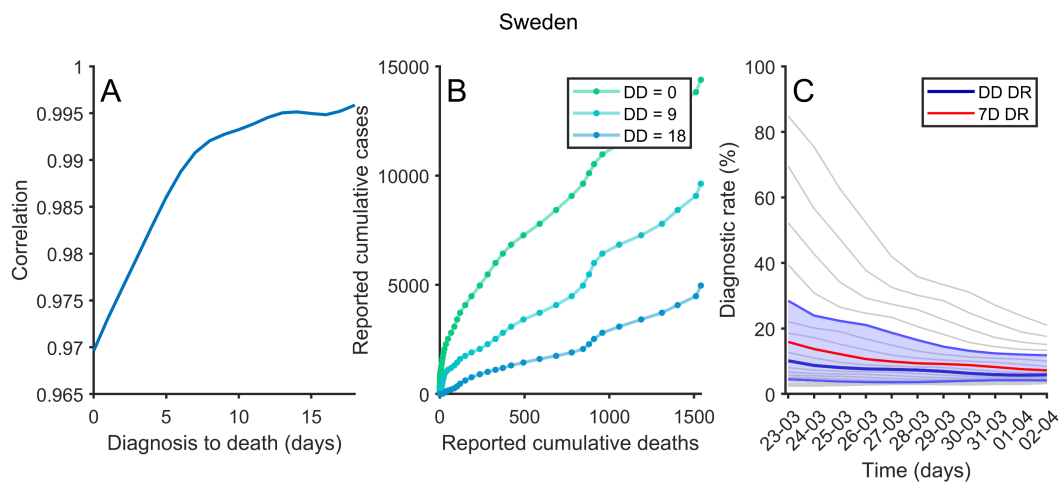
**(A)** Correlation between reported number of cumulative cases and reported number of cumulative deaths using different DtD times. **(B)** Alignment between reported number of cumulative cases and reported number of cumulative deaths using three different detection delays (DD). **(C)** Diagnostic rate along time using different DD, from top to bottom 0 to 18 days. In red, 7-day detection rate and, in blue, Delay to Detection Diagnostic Rate.



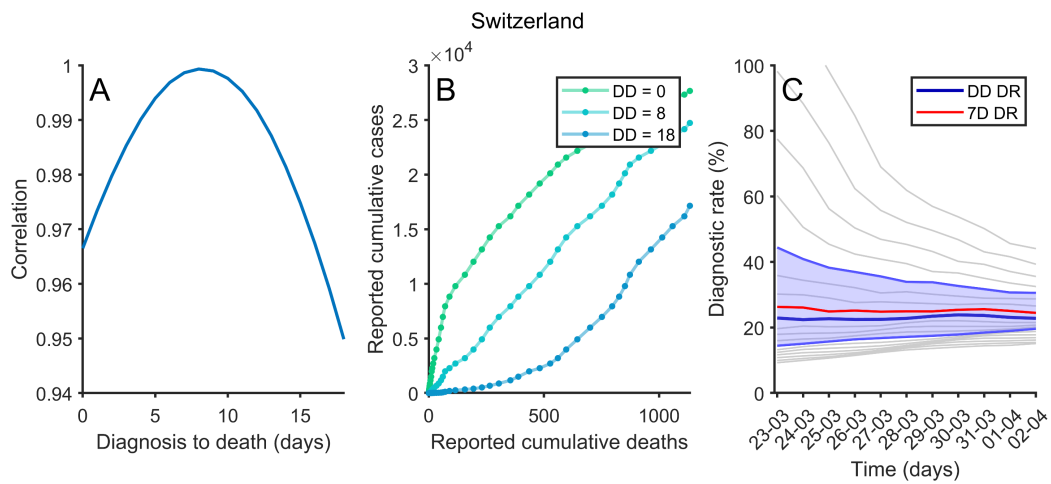
**(A)** Correlation between reported number of cumulative cases and reported number of cumulative deaths using different DtD times. **(B)** Alignment between reported number of cumulative cases and reported number of cumulative deaths using three different detection delays (DD). **(C)** Diagnostic rate along time using different DD, from top to bottom 0 to 18 days. In red, 7-day detection rate and, in blue, Delay to Detection Diagnostic Rate.



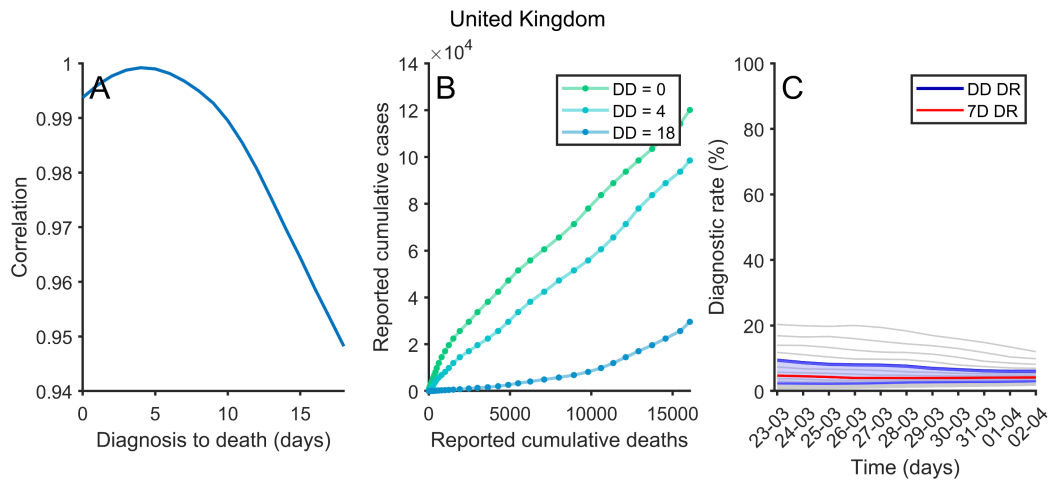
**(A)** Correlation between reported number of cumulative cases and reported number of cumulative deaths using different DtD times. **(B)** Alignment between reported number of cumulative cases and reported number of cumulative deaths using three different detection delays (DD). **(C)** Diagnostic rate along time using different DD, from top to bottom 0 to 18 days. In red, 7-day detection rate and, in blue, Delay to Detection Diagnostic Rate.



**(A)** Correlation between reported number of cumulative cases and reported number of cumulative deaths using different DtD times. **(B)** Alignment between reported number of cumulative cases and reported number of cumulative deaths using three different detection delays (DD). **(C)** Diagnostic rate along time using different DD, from top to bottom 0 to 18 days. In red, 7-day detection rate and, in blue, Delay to Detection Diagnostic Rate.

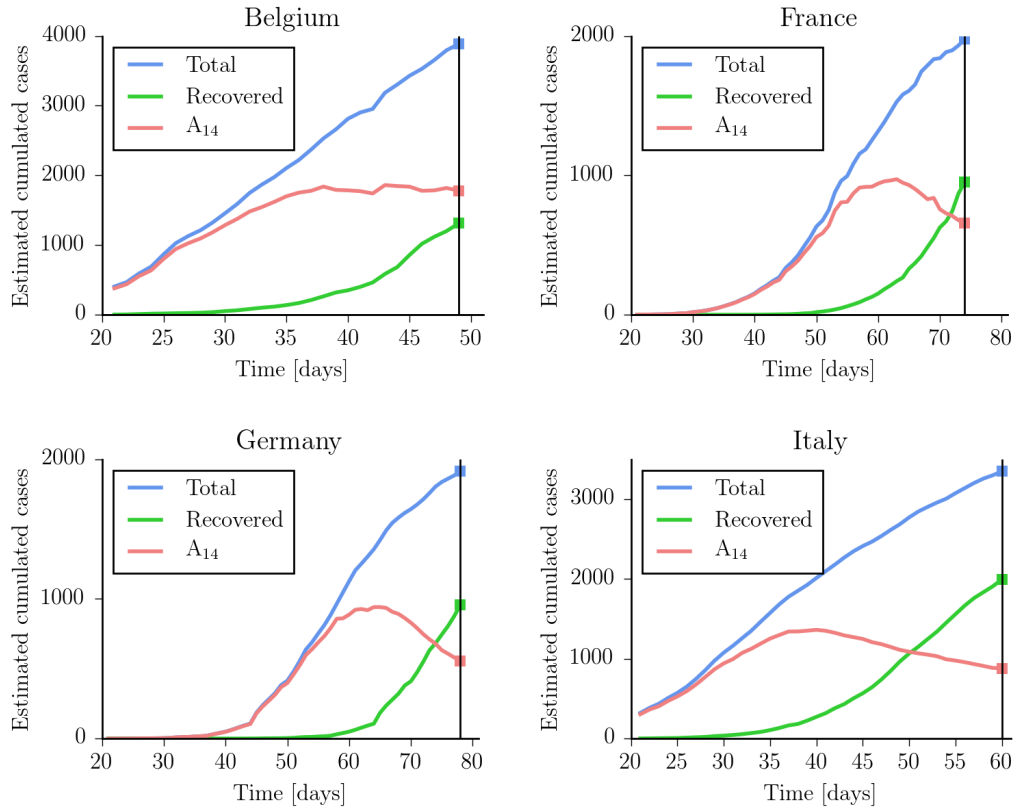


**(A)** Correlation between reported number of cumulative cases and reported number of cumulative deaths using different DtD times. **(B)** Alignment between reported number of cumulative cases and reported number of cumulative deaths using three different detection delays (DD). **(C)** Diagnostic rate along time using different DD, from top to bottom 0 to 18 days. In red, 7-day detection rate and, in blue, Delay to Detection Diagnostic Rate.

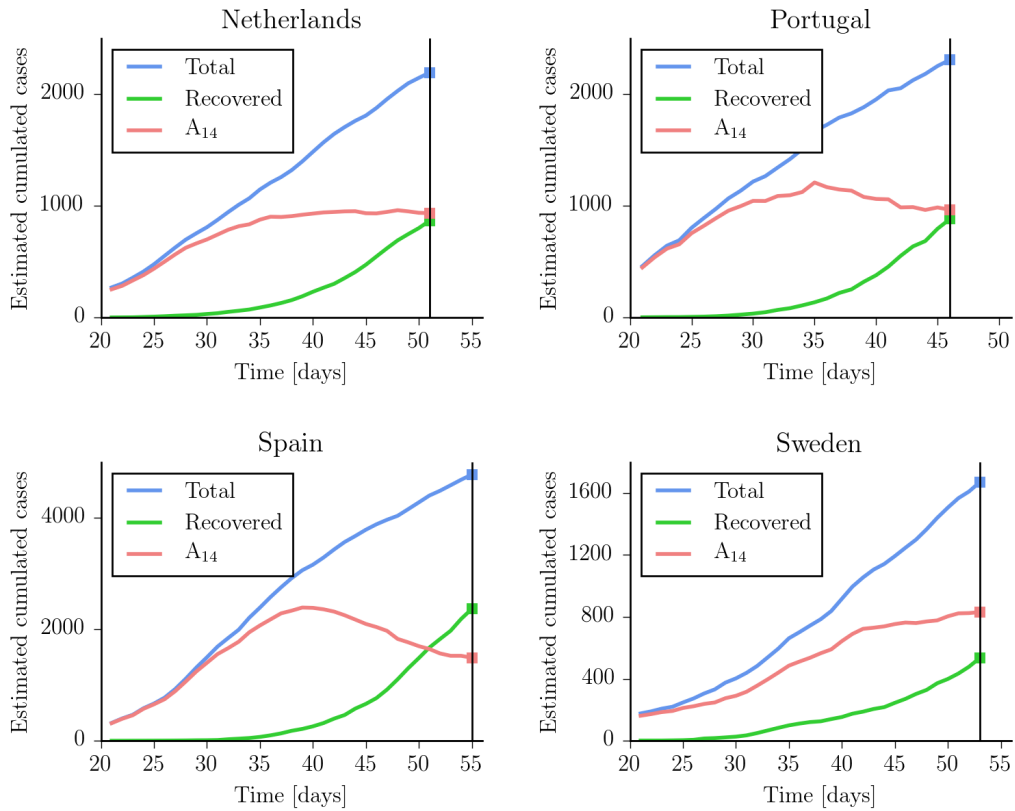


**(A)** Correlation between reported number of cumulative cases and reported number of cumulative deaths using different DtD times. **(B)** Alignment between reported number of cumulative cases and reported number of cumulative deaths using three different detection delays (DD). **(C)** Diagnostic rate along time using different DD, from top to bottom 0 to 18 days. In red, 7-day detection rate and, in blue, Delay to Detection Diagnostic Rate.

## Evolution of the attack rate and recovered for each country

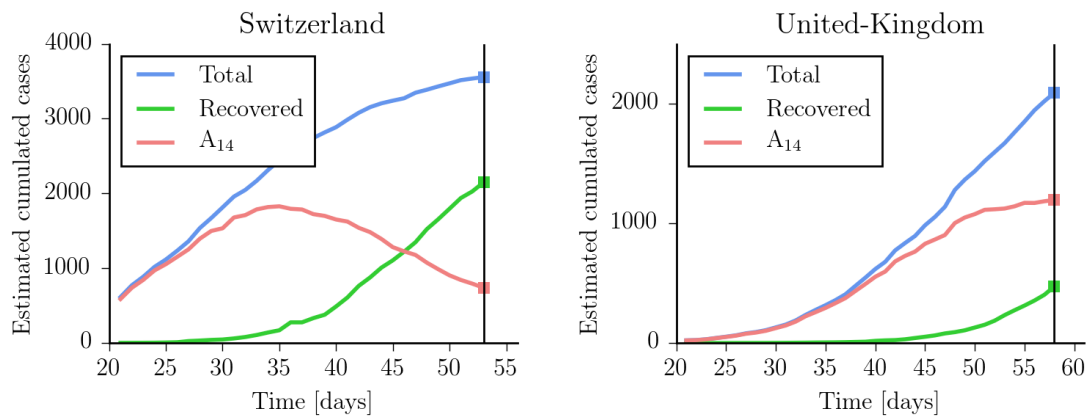


**Evolution of the estimated cases for Belgium, France, Germany and Italy**. In blue, incidence of estimated cumulative cases. In green, estimated incidence of cumulative recovered cases. In red, estimated incidence of attack rate lasts 14 days ( $A_{14}$ ). Day 1 is considered the first day where cumulative cases was over 100 cases, Belgium March 4 2020, France February 8 2020, Germany February 4 2020 and Italy February 22 2020. Data extended till April 20 2020.



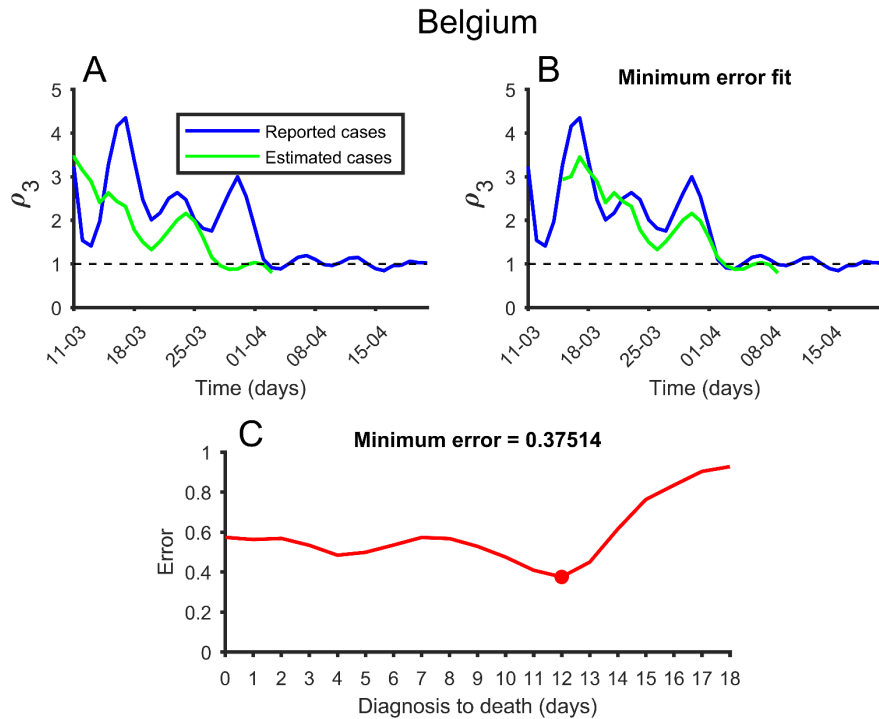
**Evolution of the estimated cases for Netherlands, Portugal, Spain and Sweden.** In blue, incidence of estimated cumulative cases. In green, estimated incidence of cumulative recovered cases. In red, estimated incidence of attack rate lasts 14 days ( $A_{14}$ ). Day 1 is considered the first day where cumulative cases was over 100 cases, Netherlands March 2 2020, Portugal March 7 2020, Spain February 27 2020 and Sweden February 29 2020. Data extended till April 20 2020.





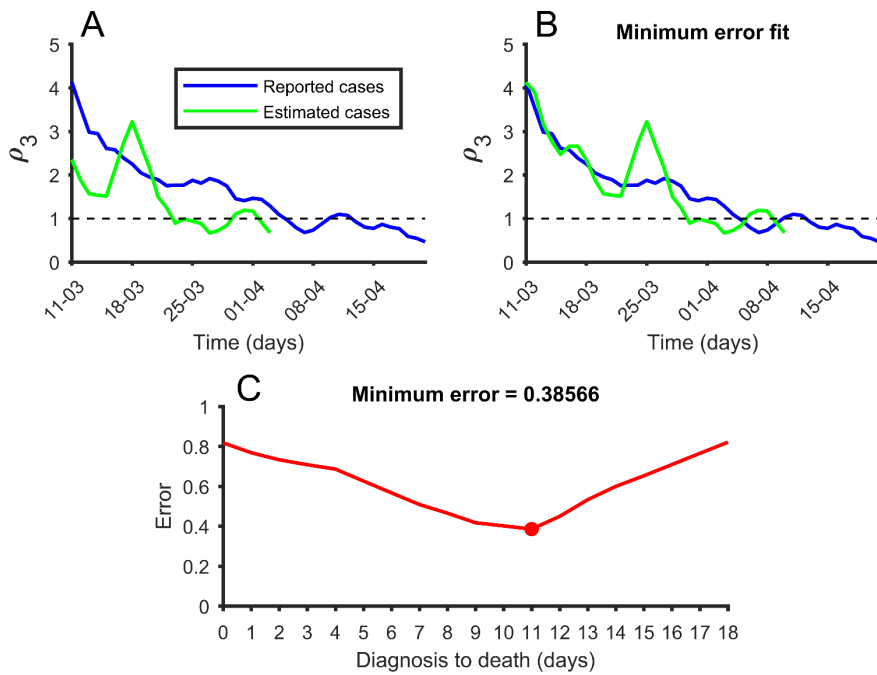
**Evolution of the estimated cases for Switzerland and United Kingdom.** In blue, incidence of estimated cumulative cases. In green, estimated incidence of cumulative recovered cases. In red, estimated incidence of attack rate lasts 14 days ( $A_{14}$ ). Day 1 is considered the first day where cumulative cases was over 100 cases, Switzerland February 29 2020 and France February 24 2020 . Data extended till April 20 2020.

## Growth rate of the epidemics. Estimated and reported.



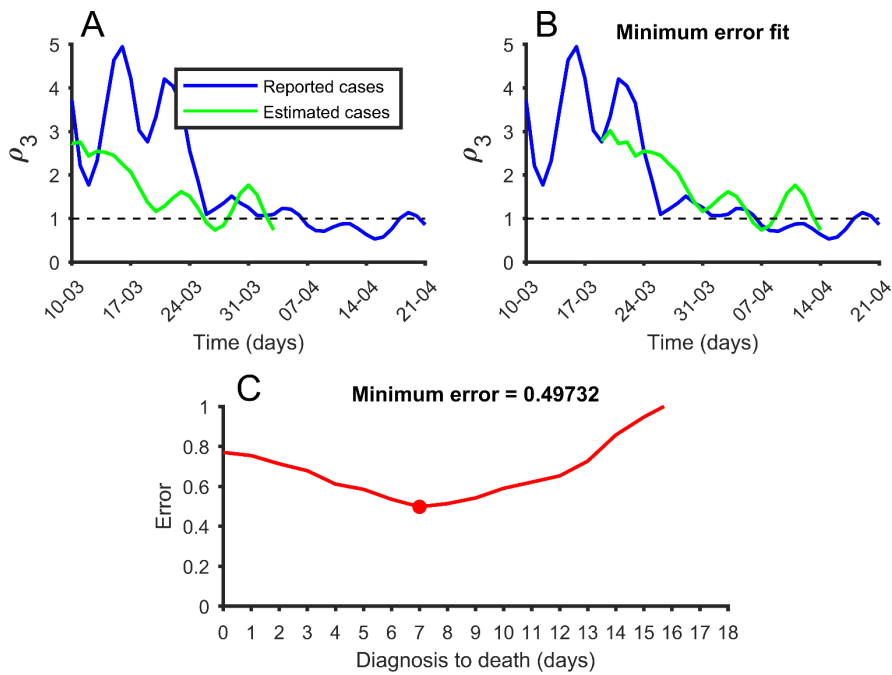
**Relation between reported growth rate and estimated growth rate of the epidemic. (A)** In green, estimated cases growth rate and, in blue, reported cases growth rate. **(B)** The growth rate of estimated cases is displaced to find better match with the growth rate of reported cases. **(C)** Error between estimated and reported growth rates using different delays. Minimum delay is marked and is the one used in (B).

## France

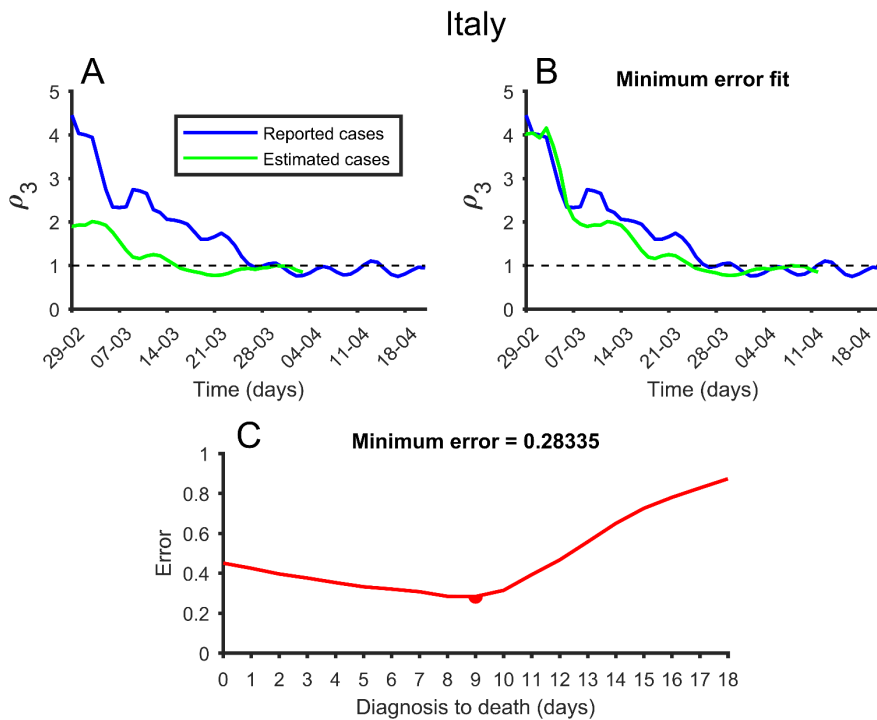


**Relation between reported growth rate and estimated growth rate of the epidemic. (A)** In green, estimated cases growth rate and, in blue, reported cases growth rate. **(B)** The growth rate of estimated cases is displaced to find better match with the growth rate of reported cases. **(C)** Error between estimated and reported growth rates using different delays. Minimum delay is marked and is the one used in (B).

## Germany

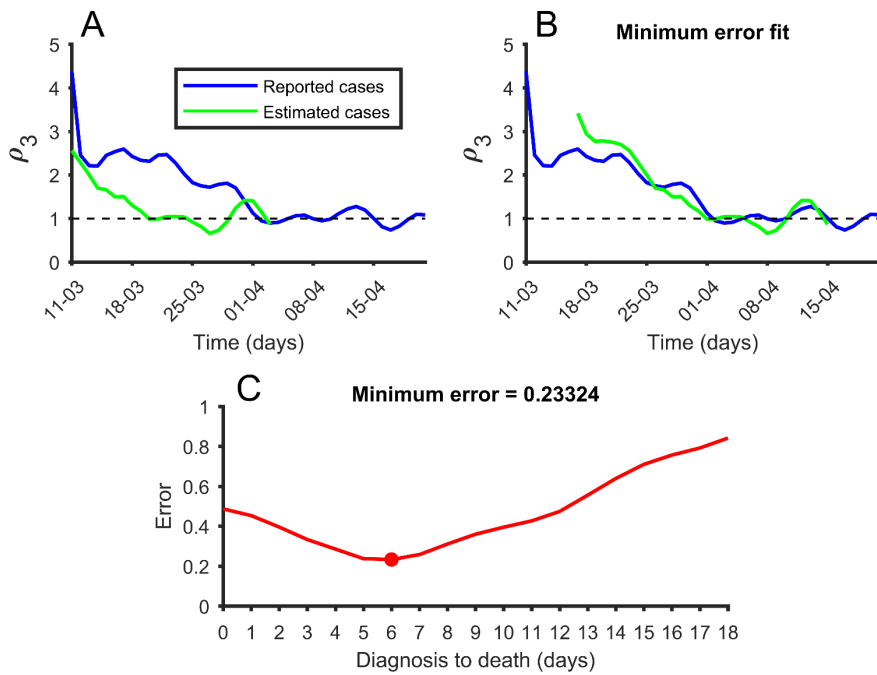


**Relation between reported growth rate and estimated growth rate of the epidemic. (A)** In green, estimated cases growth rate and, in blue, reported cases growth rate. **(B)** The growth rate of estimated cases is displaced to find better match with the growth rate of reported cases. **(C)** Error between estimated and reported growth rates using different delays. Minimum delay is marked and is the one used in (B).



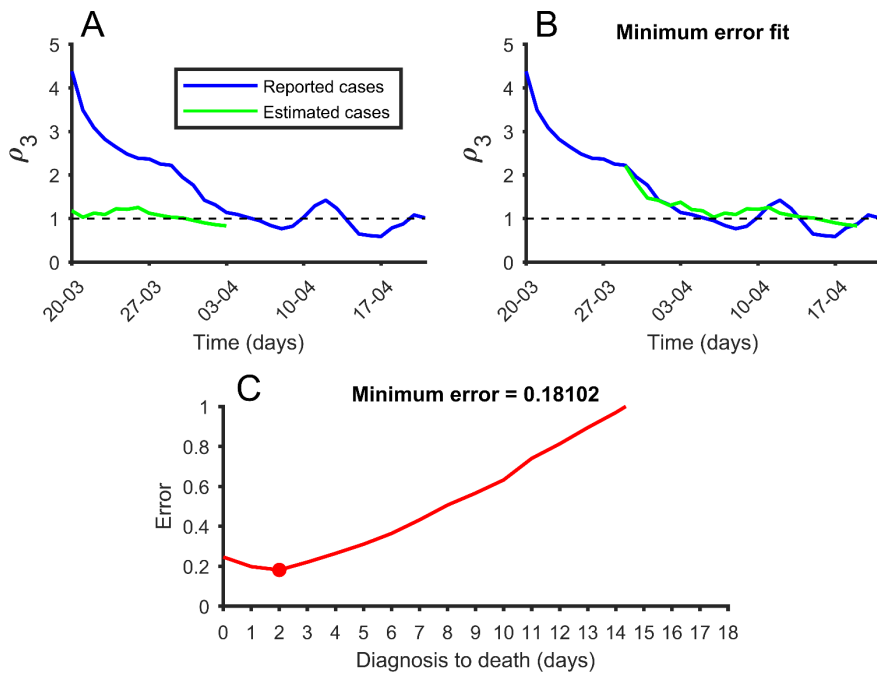
**Relation between reported growth rate and estimated growth rate of the epidemic. (A)** In green, estimated cases growth rate and, in blue, reported cases growth rate. **(B)** The growth rate of estimated cases is displaced to find better match with the growth rate of reported cases. **(C)** Error between estimated and reported growth rates using different delays. Minimum delay is marked and is the one used in (B).

## Netherlands

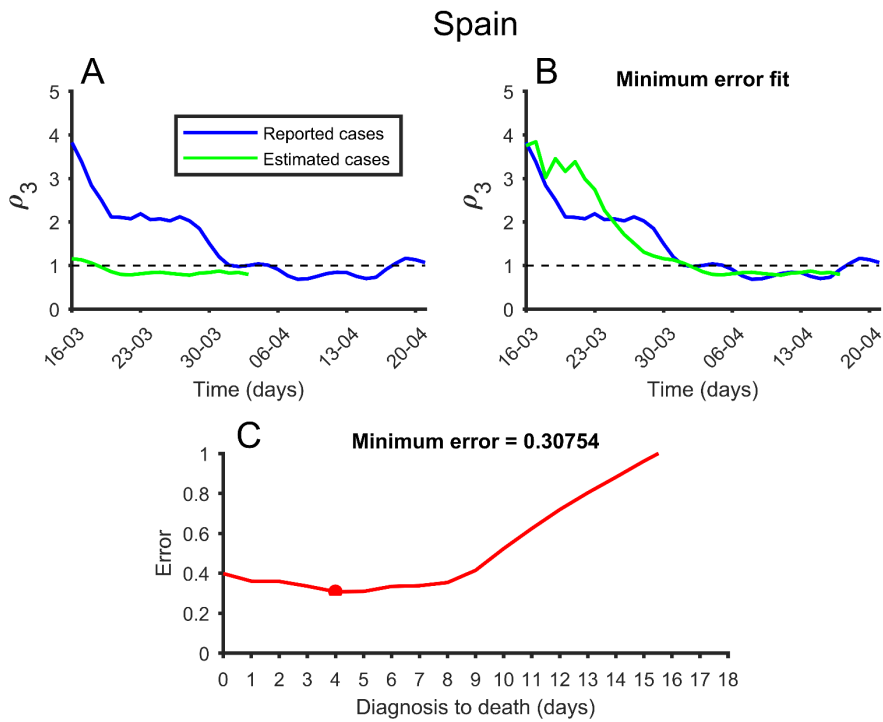


**Relation between reported growth rate and estimated growth rate of the epidemic. (A)** In green, estimated cases growth rate and, in blue, reported cases growth rate. **(B)** The growth rate of estimated cases is displaced to find better match with the growth rate of reported cases. **(C)** Error between estimated and reported growth rates using different delays. Minimum delay is marked and is the one used in (B).

## Portugal



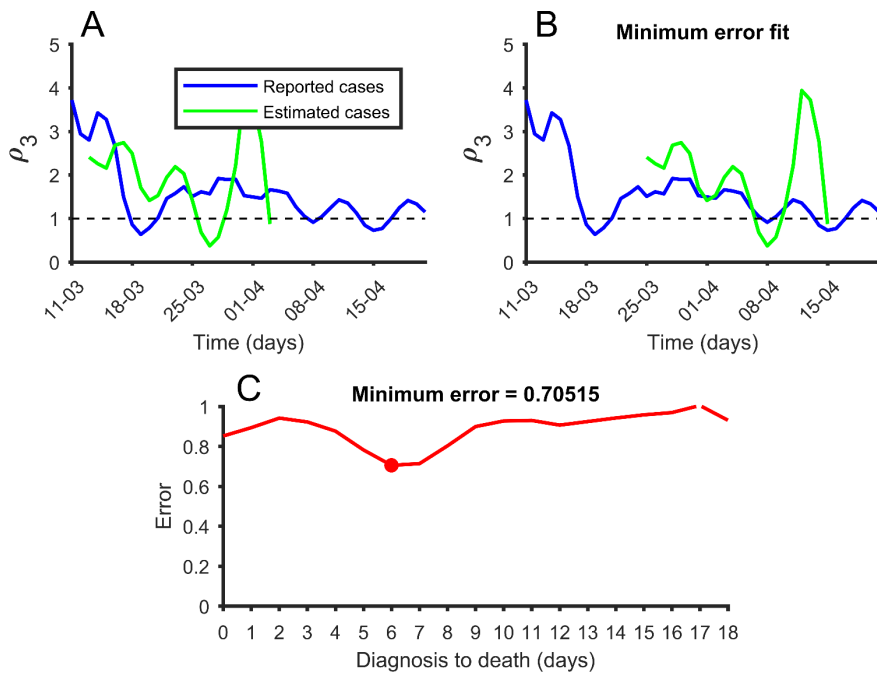
**Relation between reported growth rate and estimated growth rate of the epidemic. (A)** In green, estimated cases growth rate and, in blue, reported cases growth rate. **(B)** The growth rate of estimated cases is displaced to find better match with the growth rate of reported cases. **(C)** Error between estimated and reported growth rates using different delays. Minimum delay is marked and is the one used in (B).



**Relation between reported growth rate and estimated growth rate of the epidemic. (A)** In green, estimated cases growth rate and, in blue, reported cases growth rate. **(B)** The growth rate of estimated cases is displaced to find better match with the growth rate of reported cases. **(C)** Error between estimated and reported growth rates using different delays. Minimum delay is marked and is the one used in (B).

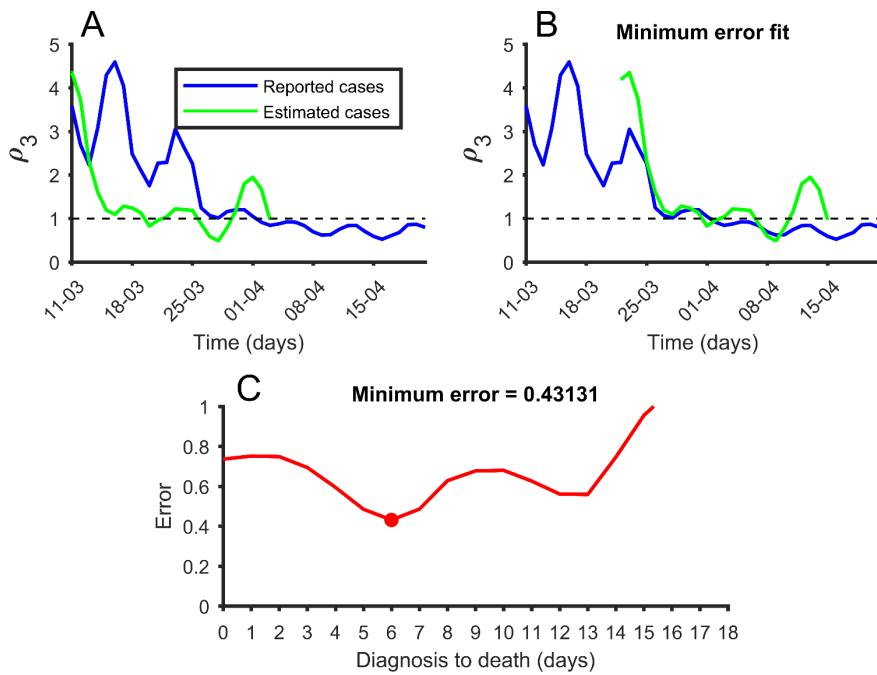


## Sweden



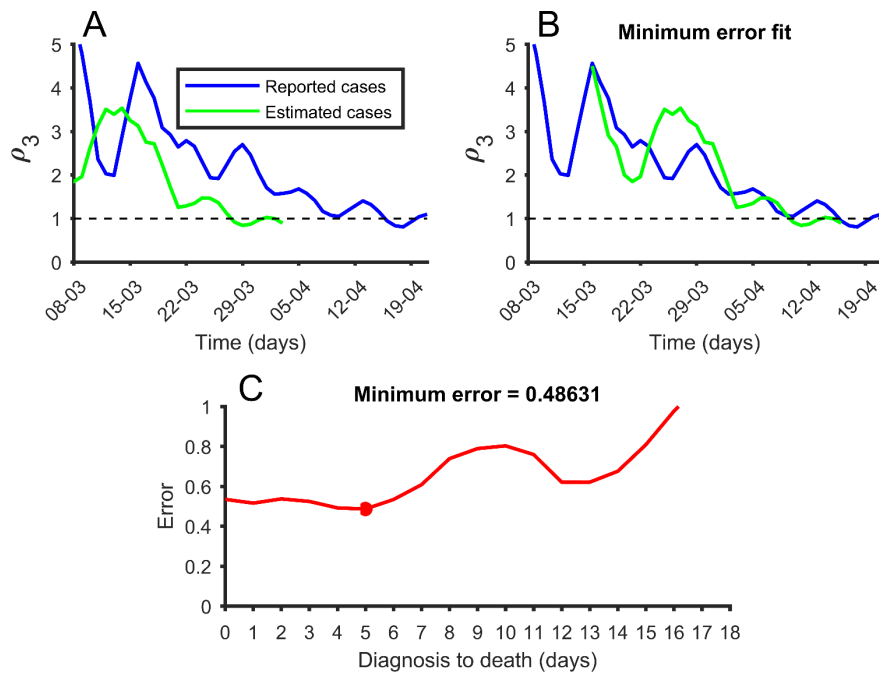
**Relation between reported growth rate and estimated growth rate of the epidemic. (A)** In green, estimated cases growth rate and, in blue, reported cases growth rate. **(B)** The growth rate of estimated cases is displaced to find better match with the growth rate of reported cases. **(C)** Error between estimated and reported growth rates using different delays. Minimum delay is marked and is the one used in (B).

### Switzerland



**Relation between reported growth rate and estimated growth rate of the epidemic. (A)** In green, estimated cases growth rate and, in blue, reported cases growth rate. **(B)** The growth rate of estimated cases is displaced to find better match with the growth rate of reported cases. **(C)** Error between estimated and reported growth rates using different delays. Minimum delay is marked and is the one used in (B).

## United Kingdom



**Relation between reported growth rate and estimated growth rate of the epidemic. (A)** In green, estimated cases growth rate and, in blue, reported cases growth rate. **(B)** The growth rate of estimated cases is displaced to find better match with the growth rate of reported cases. **(C)** Error between estimated and reported growth rates using different delays. Minimum delay is marked and is the one used in (B).