

1 **Supplementary Table 1:** The list of pathogen-antibiotic combinations modified from
 2 the WHO GLASS priority list, and are included in the AutoMated tool for
 3 Antimicrobial resistance Surveillance System (AMASS).
 4

| Type of Specimen | Pathogen | Antibacterial agents |
|------------------|---------------------------------|---|
| Blood | <i>Staphylococcus aureus</i> | Methicillin* Vancomycin Clindamycin |
| Blood | <i>Enterococcus</i> spp. | Ampicillin Vancomycin Teicoplanin Linezolid Daptomycin |
| Blood | <i>Streptococcus pneumoniae</i> | Penicillin G Oxacillin Co-trimoxazole Ceftriaxone Cefotaxime Erythromycin Clindamycin Levofloxacin |
| Blood | <i>Salmonella</i> spp. | Ciprofloxacin Levofloxacin Ceftriaxone Cefotaxime Ceftazidime Imipenem Meropenem Ertapenem Doripenem |
| Blood | <i>Escherichia coli</i> | Gentamicin Amikacin Co-trimoxazole Ampicillin Ciprofloxacin Levofloxacin Cefpodoxime Ceftriaxone Cefotaxime Ceftazidime Cefepime Imipenem Meropenem Ertapenem Doripenem Colistin |
| Blood | <i>Klebsiella pneumoniae</i> | Gentamicin Amikacin Co-trimoxazole Ciprofloxacin Levofloxacin Cefpodoxime Ceftriaxone Cefotaxime |

| | | |
|---------------------|---------------------------------------|--|
| <p>Blood</p> | <p><i>Pseudomonas aeruginosa</i></p> | <p>Ceftazidime Cefepime Imipenem Meropenem Ertapenem Doripenem Colistin</p> <p>Ceftazidime Ciprofloxacin Piperacillin/tazobactam Gentamicin Amikacin Imipenem Meropenem Doripenem Colistin</p> |
| <p>Blood</p> | <p><i>Acinetobacter baumannii</i></p> | <p>Tigecycline Minocycline Gentamicin Amikacin Imipenem Meropenem Doripenem Colistin</p> |

5 *Oxacillin or cefoxitin may be used as a proxy if methicillin is not tested.

6

7

8 **Supplementary Table 2:** The list of participating hospitals.

| Hospital | City | Country | Availability of AST result data* | Availability of negative culture data | Availability of hospital admission date data | Availability of outcome data** | Sections of AMR report that are available | Website |
|--|------------------|--------------------|----------------------------------|---------------------------------------|--|--------------------------------|---|---|
| Angkor Hospital for Children | Siem Reap | Cambodia | Yes | Yes | Yes | Yes | Section 1, 2, 3, 4, 5 and 6 | https://doi.org/10.6084/m9.figshare.12000225.v1 |
| Mahosot Hospital | Vientiane | Lao PDR | Yes | No | No | No | Section 1 and 2 | https://doi.org/10.6084/m9.figshare.12000222.v1 |
| North Okkalapa General and Teaching Hospital | Yangon | Myanmar | Yes | Yes | Yes | Yes | Section 1, 2, 3, 4, 5 and 6 | https://doi.org/10.6084/m9.figshare.12000237.v1 |
| Patan Hospital | Kathmandu | Nepal | Yes | No | No | No | Section 1 and 2 | https://doi.org/10.6084/m9.figshare.12000231.v1 |
| Sunpasitthiprasong Hospital | Ubon Ratchathani | Thailand | Yes | Yes | Yes | Yes | Section 1, 2, 3, 4, 5 and 6 | https://doi.org/10.6084/m9.figshare.12000240.v1 |
| St Thomas' Hospital | London | the United Kingdom | Yes | No | Yes | Yes | Section 1, 2, 3 and 6 | https://doi.org/10.6084/m9.figshare.12000249.v1 |
| Hospital for Tropical Diseases | Ho Chi Minh City | Vietnam | Yes | Yes | No | No | Section 1, 2 and 4 | https://doi.org/10.6084/m9.figshare.12000252.v1 |

9 Footnote of Supplementary Table 2. *Antimicrobial susceptibility testing (AST) data on interpretative categories of susceptible, intermediate, and resistant.

10 **In-hospital discharge outcome.

11

12 **Supplementary Text 1:** The methods to estimate prevalence and incidence rates were
 13 based on the recommendation of the WHO GLASS.

14

15 **Proportion of AMR pathogen:**

16

$$\begin{aligned} & \text{Proportion of patients with} \\ & \text{positive blood cultures who have} \\ & \text{resistant strains} \\ & \text{(\%, modified from WHO} \\ & \text{GLASS}^{11}) \end{aligned} = \frac{\begin{aligned} & \text{Number of patients with blood culture positive for resistant} \\ & \text{strains of bacterial species under surveillance} \\ & \text{(per pathogen per specimen per survey period)} \end{aligned}}{\begin{aligned} & \text{Total number of patients with blood culture positive for} \\ & \text{bacterial species under surveillance} \\ & \text{(per pathogen per specimen per survey period)} \end{aligned}}$$

17

18

19 **Proportion of AMR pathogen stratified by origin of infection:**

20

$$\begin{aligned} & \text{Proportion of patients with} \\ & \text{positive blood culture who have} \\ & \text{resistant strains per type of} \\ & \text{origin of infection} \\ & \text{(\%, modified from WHO} \\ & \text{GLASS}^{11}) \end{aligned} = \frac{\begin{aligned} & \text{Number of patients with blood culture positive for resistant} \\ & \text{strains of bacterial species under surveillance} \\ & \text{(per pathogen per specimen per survey period per origin of} \\ & \text{infection)} \end{aligned}}{\begin{aligned} & \text{Total number of patients with blood culture positive for} \\ & \text{bacterial species under surveillance} \\ & \text{(per pathogen per specimen per survey period per origin of} \\ & \text{infection)} \end{aligned}}$$

21

22

23 **Incidence of AMR pathogen:**

24

$$\begin{aligned} & \text{Frequency of patients with blood} \\ & \text{culture positive for pathogen} \\ & \text{(per 100,000 tested patients,} \\ & \text{modified from WHO GLASS}^{11}) \end{aligned} = \frac{\begin{aligned} & \text{Number of patients with blood culture positive for} \\ & \text{bacterial species in the population tested} \\ & \text{during reporting period * 100,000} \\ & \text{(per pathogen per specimen per survey period)} \end{aligned}}{\begin{aligned} & \text{Total number of patients with blood culture performed} \\ & \text{during the reporting period} \end{aligned}}$$

25

26

$$\begin{aligned} & \text{Frequency of patients with blood} \\ & \text{culture positive for resistant} \\ & \text{strains} \\ & \text{(per 100,000 tested patients,} \\ & \text{modified from WHO GLASS}^{11}) \end{aligned} = \frac{\begin{aligned} & \text{Number of patients with blood culture positive for resistant} \\ & \text{strains of bacterial species under surveillance} \\ & \text{during reporting period * 100,000} \\ & \text{(per pathogen per specimen per survey period)} \end{aligned}}{\begin{aligned} & \text{Total number of patients with blood culture performed} \\ & \text{during the reporting period} \end{aligned}}$$

27

28

29

30

31

32

33 **Incidence of AMR pathogen stratified by origin of infection:**

34

$$\begin{aligned} & \text{Frequency of patients with blood culture positive for pathogen} \\ & \text{(per 100,000 tested patients, modified from WHO GLASS¹¹)} \\ & = \frac{\text{Number of patients with blood culture positive for bacterial species in the population tested during reporting period * 100,000} \\ & \quad \text{(per pathogen per specimen per survey period per origin of infection)}}{\text{Total number of patients with the first blood culture performed within the first two calendar days of admissions during the reporting period}} \end{aligned}$$

35

36

$$\begin{aligned} & \text{Frequency of patients with blood culture positive for resistant strains} \\ & \text{(per 100,000 tested patients, modified from WHO GLASS¹¹)} \\ & = \frac{\text{Number of patients with blood culture positive for resistant strains of bacterial species under surveillance during reporting period * 100,000} \\ & \quad \text{(per pathogen per specimen per survey period per origin of infection)}}{\text{Total number of patients with the first blood culture performed after the first two calendar days of admission during the reporting period}} \end{aligned}$$

37

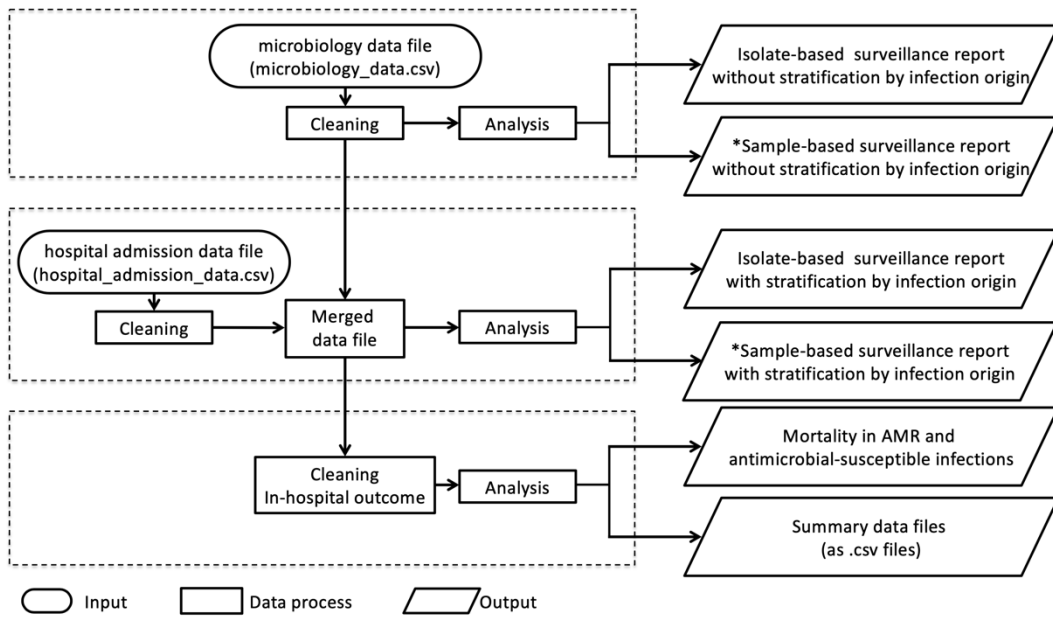
38

39

40 **Supplementary Text 2: Simulating hypothetical data sets.**

41 We generated a hypothetical data set for users to test AMASS and to visualize the data
42 format required for the application. Two hypothetical data files
43 (microbiology_data.xlsx and hospital_admission_data.xlsx) were generated using the
44 summary statistics in the AMR surveillance report from Sunpasitthiprasong Hospital in
45 2015.³² The key variables generated were admission date, discharge date, gender, age
46 (in year), in-hospital discharge outcome, specimen date, specimen type, organism
47 isolated, and antibiogram results. The admission date was sampled from a uniform
48 distribution ranged between 1st January 2016 and 31st December 2016. For bloodstream
49 infections of community-origin, we assumed that the first blood specimen culture
50 positive for the pathogen was collect on the first calendar day of hospitalization. For
51 bloodstream infections of hospital-origin, we assumed that the first blood specimen
52 culture positive for the pathogen was collected on the fourth day of hospitalization. The
53 data was generated using STATA, version 15.1 (StataCorp LP, College station, Texas,
54 USA).
55

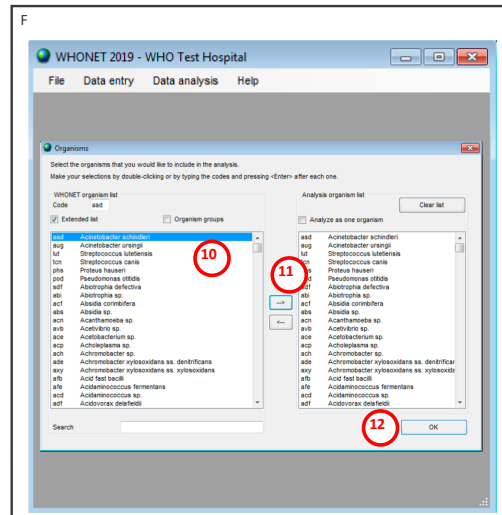
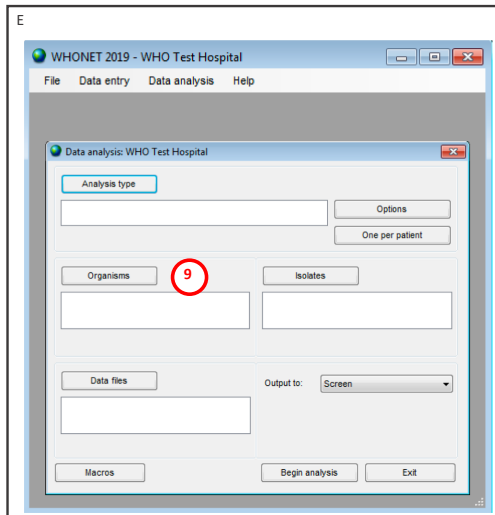
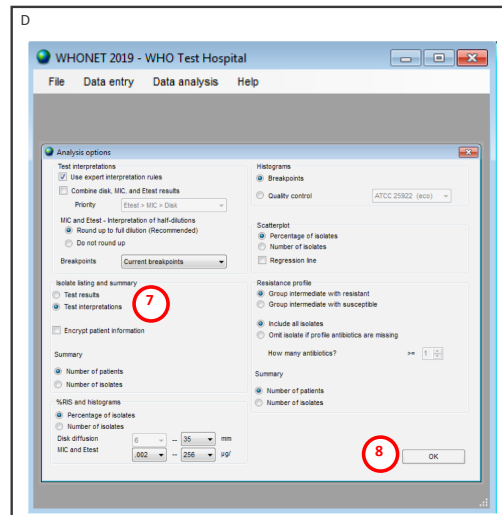
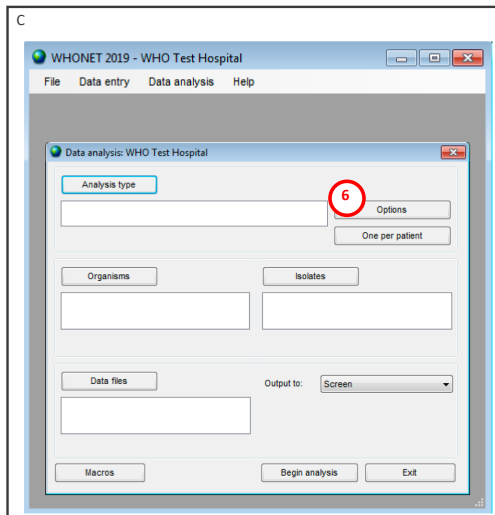
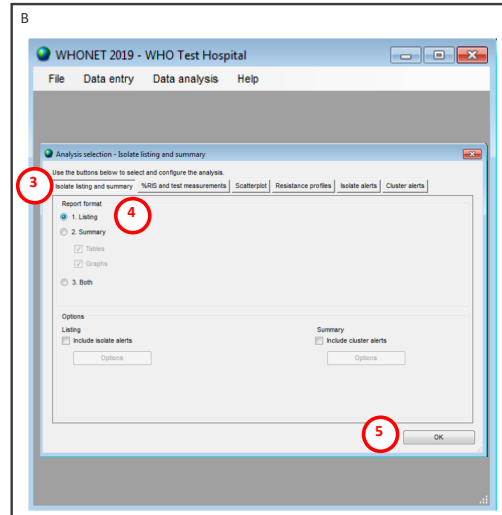
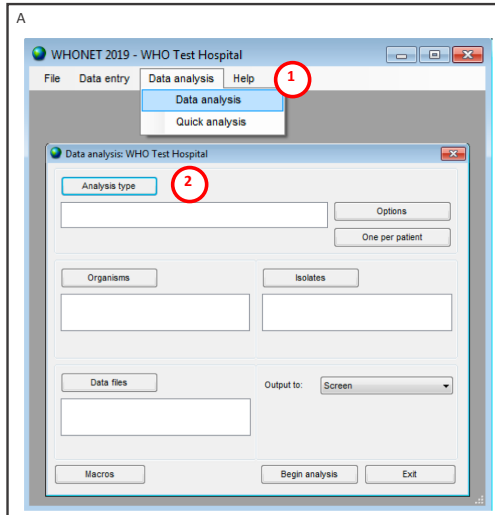
56 **Supplementary Figure 1.** An overview on the flow of data processing and analyses
 57 performed by AMASS.
 58

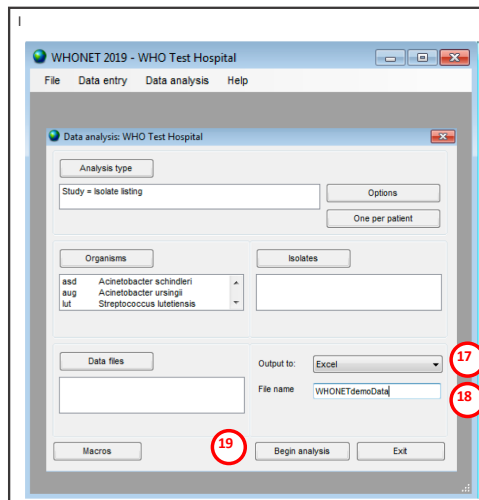
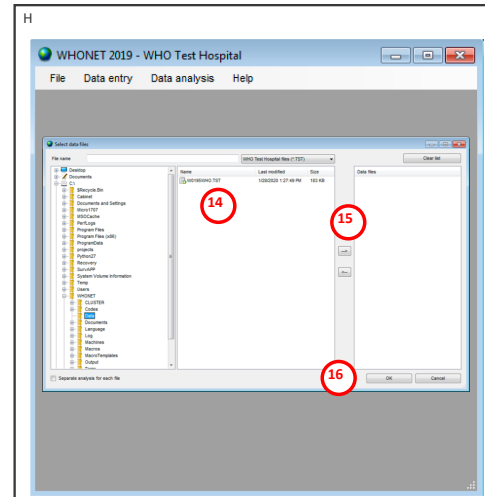
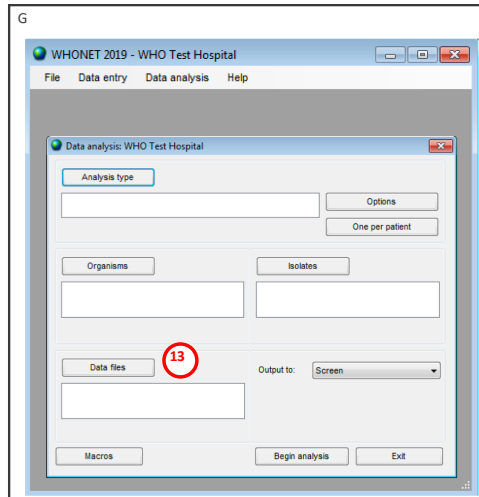


*In cases when data on negative blood culture are available

59
 60
 61

62 **Supplementary Figure 2:** How to export data from WHONET 5.6 (2019) in an Excel
 63 format that can be used by AMASS. The process helps users with raw disk diffusion
 64 zone diameter/MIC values to convert to antimicrobial susceptibility test interpretive
 65 categories (susceptible, intermediate, resistant). Data analysis menu (A, C, E, G and I)
 66 brings users to separated windows (B, D, F and H), which contains various functions
 67 to process the data.





69

70

Footnote of Supplementary Figure 2. The WHONET users may follow the steps below to combine several data files into one, and to standardise the format to export in Excel format for AMASS. Please note that we have created a data dictionary that is downloadable from www.amass.website for the WHONET users.

71

1) Select “Data analysis” under the “Data analysis” tab.

72

2) Click “Analysis type” button on the “Data analysis” window.

73

3) Select “Isolate listing and summary” tab.

74

4) Click “1. Listing” option.

75

5) Click “OK” to complete and exit the window.

76

6) Click “Options” button on the “Data analysis” window.

77

7) Select “Test interpretations” option under “Isolate listing and summary”

78

8) Click “OK” to complete and exit the window.

79

9) Click “Organisms” button on the “Data analysis” window.

80

10) Select ALL by highlighting the list or type “ALL” in the blank space next to “Code”.

81

11) Click the right arrow to include the whole list.

82

12) Click “OK” to complete and exit the window.

83

13) Click “Data files” button on the “Data analysis” window.

84

14) Select the data set(s) to be exported.

85

15) Click the right arrow to include the data set(s) to be exported.

86

16) Click “OK” to complete and exit the window.

87

17) Choose “Excel” in the drop-down menu of the “Output to:”.

88

18) Name the file to be exported.

89

19) Click “Begin analysis” to export the data.

90

- 93 **Supplementary Video 1**
94 https://youtu.be/T_jvp7xiIs0
95
96 **Supplementary Video 2**
97 https://youtu.be/ItNIdazNy_I