

Why lockdown? Simplified arithmetic tools for decision-makers, health professionals, journalists and the general public to explore containment options for the novel coronavirus

Gerry F. Killeen^{1,2}, Samson S Kiware¹

¹Environmental Health and Ecological Sciences Department, Ifakara Health Institute, Ifakara, Morogoro, United Republic of Tanzania; ²School of Biological, Earth and Environmental Sciences, University College Cork, Republic of Ireland.

Correspondence: gkilleen@ihi.or.tz and skiware@ihi.or.tz

Supplementary Online Material 1: Formal mathematical description

In this document, we present a detailed formal description of how the model calculations are made, and the underlying assumptions it is based on. This is a simplified *arithmetic modelling* which uses only addition, subtraction, multiplication, division, rounding off, a few conditional statements (e.g. *if, less than/greater than, and/or*), and two unavoidable power terms, to make the necessary calculations. This model includes no differential equations, calculus, limits, distributions, stochastic simulations or agent-based approaches. For simplicity, this model is purely deterministic, meaning all input and derived parameters represent population wide averages. Correspondingly, all case counts are necessarily calculated as continuous decimals and rounded off for presentation purposes, except when the total number of predicted cases drops below 0.1, at which point the epidemic is assumed to have been terminated, so this value is rounded down to 0. Also for the sake of simplicity, the model does not use continuous time or even chronological time increments to simulate progression of the epidemic, but rather incremental time steps equivalent to the mean duration of a single infection in a single human (d_i), which are then converted into chronological time (t) for presentation purposes. This biodemographic approach allows the growth of the epidemic to be directly and intuitively calculated, based largely on the basic reproductive number (R_0) and the controlled reproductive number under lock down (R_l).

Assumptions

Several assumptions were made in developing the model and setting initial parameter values, including but not limited to;

- Based on advance warning from China and other counties affected early in the pandemic, maximum possible testing capacity is already up and running before first imported case.
- Containment of imported cases relies on isolation of all new arrivals, except those coming directly from countries certified to be free of local COVID-19 transmission by WHO in the future.
- The epidemic is assumed to be eliminated at predictions of less than 0.1 cases per day, even though there actually remains up to a 10% chance that it persists.

- The human population behaves and interacts homogeneously, which is never true, so real transmission dynamics are expected to be more robust and will require a particular emphasis on individuals with sustained, higher-than average exposure.
- All severely ill cases will be given priority and tested up to the point where they exceed testing capacity.

Basic parameters

Table 1 presents the basic assumed parameter values used for the simulation, their description and dimension – the symbols are also provided to help follow the arithmetic descriptions.

Supplementary Table 1. Assumed values for input parameters of the arithmetic model as intended to be representative of COVID-19 transmission and successful epidemic containment in the United Republic of Tanzania.

Symbol	Input parameter description	Assumed value	Dimension	References
R_0	Basic reproductive number (Average number of new infections arising from a single existing infection over its full duration if allowed to do so in a fully susceptible, immunologically naïve population in the absence of any control measures)	4.0	Number	1-12
d_i	Duration of infection (Average number of weeks an infection lasts in a human before it is eliminated by the immune system).	3	Time	13-19
N	Human population size	57 million	Number	20
Ω	Baseline incidence of unrelated similar symptoms (Proportion of population per week experiencing similar symptoms to COVID-19 but caused by other common pathogens like the common cold, influenza, malaria, etc)	1%	Time ⁻¹	21,22
λ	Initial importation rate (Number of new primary cases arriving into the country each week)	5	Time ⁻¹	Assumed
α_λ	Time to initiation of importation containment intervention at border posts, airports and ports of entry (Number of weeks since the first imported cases before inbound travellers to the country are isolated on arrival)	2	Time	Assumed
α_l	Time to initiation of lock-down intervention (Number of weeks since the first imported cases before population-wide restrictions are introduced to prevent personal exposure behaviours)	5	Time	Assumed
d_l	Duration of lock-down intervention (Number of weeks since initiation of population-wide restrictions to prevent personal exposure behaviours until these restrictions are lifted)	15	Time	Assumed
θ_0	Asymptomatic proportion of cases (Proportion of all	50%	Dimensionless	23-31

	cases who lack, don't notice or don't report any overt symptoms associated with the infection)			
$\theta_{1,s}$	Proportion of symptomatic cases which are clinically severe (Percentage of all cases exhibiting and reporting with severe symptoms, all of whom are assumed to be tested unless the limits of testing capacity are exceeded)	20%	Dimensionless	23,32
$\theta_{1,c}$	Proportion of mild and severe symptomatic cases requiring critical care (Percentage of all cases exhibiting and reporting with any mild or severe symptoms who need intensive care, which can also be described as $\theta_{m+s,c}$)	4%	Dimensionless	23,32,33
u	Intensive care unit (ICU) capacity (Maximum achievable percentage of the population that could be admitted to an ICU at a given time, allowing for maximum emergency expansion of capacity at short notice)	0.0002%	Dimensionless	34
μ_1	Case fatality rate in ICUs (Percentage of cases needing intensive care who access it but die nevertheless)	20%	Dimensionless	32
μ_0	Case fatality rate outside ICUs (Percentage of cases needing intensive care but who cannot access it and die subsequently)	50%	Dimensionless	Assumed
τ	Maximum achievable diagnostic testing rate (Percentage of entire population per week)	0.02%	Dimensionless	Assumed
ρ_λ	Proportional containment of imported cases (Percentage of secondary cases arising from primary imported cases which are prevented by travel restrictions and isolation of inbound travellers from affected countries on arrival)	100%	Dimensionless	Assumed
ρ_γ	Proportional containment of contact clusters of confirmed cases (Percentage of secondary cases arising from diagnostic-confirmed primary cases which are prevented by contact tracing and isolation)	90%	Dimensionless	22,35
ρ_l	Proportional lock down effectiveness (Percentage reduction of exposure behaviours, eg. close personal contact, sharing venues, transport, goods and other objects, among the fraction of the population included in and compliant with the lock down interventions)	90%	Dimensionless	23
C_l	Proportional lock down coverage (Percentage of entire population included in and compliant with interventions to reduce exposure behaviours, inclusive of staying indoors, avoiding other people, wearing face masks, and frequent hand washing)	90%	Dimensionless	23

Derived parameters

We first derive four important parameters from the basic parameters to enable step-by-step simulation of epidemic trajectories over time;

1) Time to termination of preventative behaviour intervention ($\alpha_{d,l}$) is the sum of the duration of lock-down intervention (d_l) and the number of weeks until initiation of population-wide lock down restrictions to prevent personal exposure behaviours (α_l):

$$\alpha_{d,l} = \alpha_l + d_l \quad \text{Eq. (1)}$$

2) The basic reproductive number following introduction of lock down control measures (R_l) to prevent exposure behaviours is the product of the basic reproductive number and the square of the complement of the product of the proportion of the population covered by the local down and proportion of exposure behaviours presented:

$$R_l = R_0(1 - \rho_l C_l)^2 \quad \text{Eq. (2)}$$

Note that this form is adapted conveniently from some of our simplified models of malaria transmission by zoophagic mosquitoes, in which community-level protection is a similar function of personal protection coverage and efficacy among humans,³⁶ which translates into equivalent protection of the vector population against infectious humans.³⁷ This adaptation is logical because the principle is the same: human-to-human transmission of any pathogen requires two people to exhibit exposure behaviours, so the rate they occur it is proportional to the square of the relative rate at which those behaviours are allowed to persist. In the case of malaria, that means the square of the proportion of mosquito exposure allowed to continue by coverage gaps in personal protection measures and imperfections in the protection provided by those measures. In the case of COVID-19, the equivalent persisting fraction of personal exposure behaviours arises from the proportion individuals exempted (e.g., health professionals, food retail staff) or non-compliant with lock down measures (e.g., homeless people lacking the necessary support to do so, irresponsible COVID-19 challenge participants) and the proportion of exposure behaviours that still occur amongst compliant individuals despite their best efforts (e.g., touching door handles going into shops, unavoidable close contact with other householders).

3) The expected proportional growth rate of cases (per week) at the outset of the epidemic is given as the basic reproductive number to the power of the reciprocal of the duration of infection minus one:

$$r_0 = R_0^{1/d_i} - 1 \quad \text{Eq. (3)}$$

4) The expected proportional growth rate of the epidemic under lock down (per week) is given as a function of controlled basic reproductive number to the power of the reciprocal duration of the infection minus one:

$$r_c = R_l^{1/d_i} - 1 \quad \text{Eq. (4)}$$

In addition to these new parameters, the incremental biodemographic time steps (each one infection lifetime (d_i) long) used by the model must be converted into chronological time for presentation purposes. The mid-point time of each interval (i) in weeks (t_i) is given thus,

$$t_i = (i - 0.5)d_i \quad \text{Eq. (5)}$$

where, $i = 1, 2, 3 \dots n$ the number of viral lifetimes over which the epidemic trajectory is predicted.

Computation of proportional of population represented by cases

In the following subsections, we will describe how to compute each of the required number of cases by starting with proportions and the population size (N) just like a standard SIR model.³⁸ First, we will describe how the following proportions of the population are computed.

1. Proportion of population represented by new secondary imported cases ($I_{i,\lambda}$),
2. Proportion of population never infected (S_i),
3. Proportion of population actively infected (I_i)
4. Proportion of population actively infected and confirmed to be infected by diagnostic testing ($I_{i,\tau}$),
5. Proportion of population actively infected, confirmed to be infected by diagnostic testing and successfully isolated following contact (γ) tracing ($I_{i,\tau,\gamma}$),
6. Cumulative proportion of population previously infected and now recovered and immune (R_i).

Based on those proportions, the population size and various other input parameters in table S1, we describe how the following numbers of cases occurring at each interval are calculated:

1. Number of new imported primary cases ($N_{i,\lambda}$)
2. Number of new cases ($N_{i,\lambda}$),
3. Number of new symptomatic cases $N_{i,m}$
4. Number of new severely symptomatic cases ($N_{i,s}$),
5. Number of new asymptomatic cases ($N_{i,0}$),
6. Number of new incidents of symptoms ($N_{i,\Omega}$),
7. Number of new confirmed cases ($N_{i,\tau}$),
8. New cases requiring intensive care unit (ICU) admission ($N_{i,u}$),
9. Number of new ICU cases exceeding available capacity ($N_{i,u,0}$), and
10. Number of new deaths ($N_{i,\mu}$).

Proportion of population that was never infected and remains susceptible (S)

We consider the proportion of the population who remain uninfected and completely susceptible (S) in classical SIR notation³⁸, actively infected (I in classical SIR notation³⁸) and recovered and immune (R in classical SIR notation³⁸), where;

$$S + I + R = 1 \quad \text{Eq. (6)}$$

In order to avoid the usual differential equations used for SIR models, or any exponential decay functions which would be equally opaque to many non-specialists, we first calculate the proportion of susceptible individuals at any given time increment (S_i) as a quantity that has been reduced relative to the previous increment ($i - 1$) in proportion to proportion of new secondary cases arising from recently imported primary cases ($I_{i-1,\lambda}$) and the number of times each infection is capable of reproducing itself over its lifetime (R_0 or R_l), which is deliberately matched exactly to the duration of the time increment used (d_i). Thus, at a given increment (i), S_i is calculated as the product of itself minus the proportion of the population accounted for by secondary imported cases at the preceding increment ($i - 1$) and the proportion of population that was not only actively infected and confirmed (τ) but also contact (γ) traced and effectively isolated ($I_{i-1,\tau,\gamma}$) added to the complement of the proportion of actively infected individuals in the population (I_{i-1}), all at the preceding increment ($i - 1$), to the power of the reproductive number (R_0 or R_l , depending on whether the lockdown is active):

$$S_i = \begin{cases} (S_{i-1} - I_{i-1,\lambda})(1 - I_{i-1} + I_{i-1,\tau,\gamma})^{R_l}, & \alpha_l < t_i < \alpha_{d,l} \\ (S_{i-1} - I_{i-1,\lambda})(1 - I_{i-1} + I_{i-1,\tau,\gamma})^{R_0}, & t_i \leq \alpha_l \text{ or } t_i \geq \alpha_{d,l} \end{cases} \quad \text{Eq. (7)}$$

Where, $i = 2,3,4 \dots n$ the number of viral lifetimes over which the epidemic is predicted. The details of how $I_{i-1,\lambda}$, I_i and $I_{i,\tau,\gamma}$ are calculated are provided below in sections centred around equations 8 to 10 and 11 to 24, respectively.

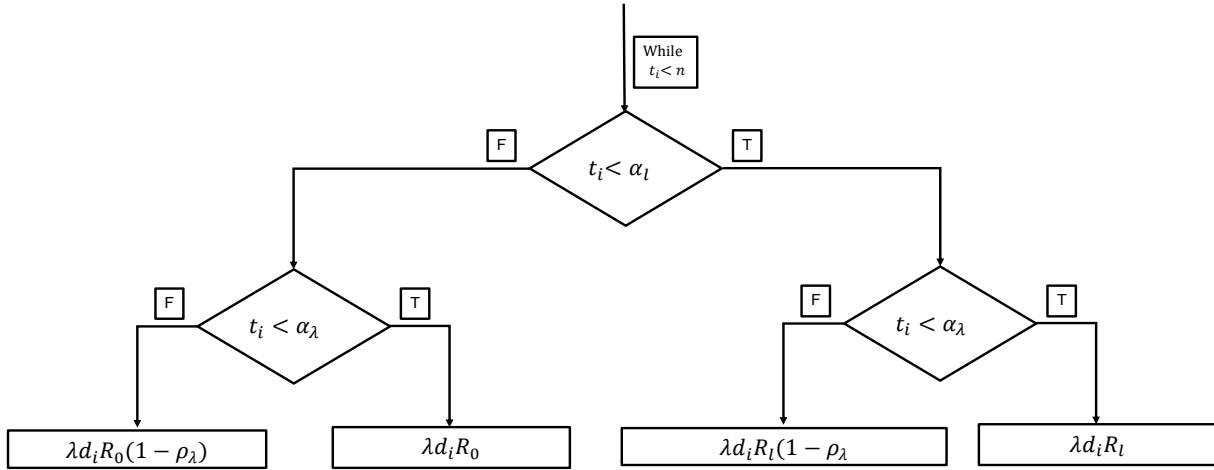
However, to seed the model with an initial non-zero proportion of infected individuals at the first time step (i.e., $i = 1$), the number and proportion of new secondary cases ($I_{i,\lambda}$), arising from imported primary cases ($N_{\lambda,i}$) must be calculated first. This is only step that we start with a number (i.e., N_λ) and then convert to a proportion, rather than *vice versa*, because that makes it easier for a non-specialist to relate to the format of the importation rate input parameter and then follow the arithmetic involved.

Imported number of secondary cases

The number of new secondary cases arising from imported primary cases (N_λ) is calculated as the product of the number of new primary cases arriving into the country each week (λ), the duration of infection (d_i), the complement of the proportion of secondary cases arising from primary imported cases which are prevented by travel restrictions and isolation of inbound travellers from affected countries on arrival (ρ_λ) and the reproductive number (R_0 or R_l , depending on the number of weeks until initiation of population-wide lock down (α_l) and the number of weeks since the first imported cases before inbound travellers to the country are isolated on arrival (α_λ). Thus, at a given increment(i), based on only primary and derived parameter, $N_{\lambda,i}$ is given by;

$$N_{\lambda,i} = \begin{cases} \lambda d_i R_0, & t_i < \alpha_l \text{ and } t_i < \alpha_\lambda \\ \lambda d_i R_0 (1 - \rho_\lambda), & \alpha_\lambda < t_i < \alpha_l \\ \lambda d_i R_l, & t_i \geq \alpha_l \text{ and } t_i < \alpha_\lambda \\ \lambda d_i R_l (1 - \rho_\lambda), & t_i \geq \alpha_l \text{ and } t_i \geq \alpha_\lambda \end{cases} \quad \text{Eq. (8)}$$

The flowchart (Supplementary Fig 3) presents a graphical representation of a logic sequence for calculating imported number of new secondary cases.



Supplementary Figure 3: Illustration of the logic flow for how the number of a new secondary case ($N_{\lambda,i}$) is calculated based on four different conditions comparing the current week (t_i) since the first viral generation with the number of weeks until initiation of population-wide lockdown restrictions (α_l) and the number of weeks before inbound travellers to the country are isolated on arrival (α_λ).

Proportion of population represented by new secondary imported cases

Now, based on the computed number of new secondary cases arising from imported primary cases (N_λ) and the human population size (N), the proportion of new secondary cases arising from imported primary cases ($I_{i,\lambda}$) is simply given by the quotient of N_λ divide by N , thus,

$$I_{i,\lambda} = \frac{N_\lambda}{N} \quad \text{Eq. (9)}$$

At this point, we can seed the model with an initial non-zero proportion of infected individuals at the first time step (i.e., $i = 1$) based on computed proportion of new secondary cases arising from imported primary cases – its initial computed value (i.e., $I_{1,\lambda}$). This is simply the complement of $I_{1,\lambda}$, thus,

$$S_1 = 1 - I_{1,\lambda} \quad \text{Eq. (10)}$$

At this stage, we can now calculate the proportion of population actively infected (I_i), actively infected and confirmed ($I_{i,\tau}$), as well as the proportion that was also successfully contact (γ) traced and isolated ($I_{i,\tau,\gamma}$), and cumulative proportion of population previously infected, recovered and now immune (R_i), by first computing their values at the first step. Then, each proportion is updated through an iteration process at each time step and this process continues until the last value (n) of viral generation provided.

Proportion of population actively infected

The proportion of human population actively infected (I_1) at the first time step (i.e., $i = 1$) is the complement of the proportion of susceptible individuals (i.e., proportion of population never infected (S_1)), so,

$$I_1 = 1 - S_1. \quad \text{Eq. (11)}$$

In general, the proportion of human population actively infected depends on the current epidemic status (i.e., whether the infection is eliminated or not). Therefore, if the epidemic status ($E_{s,i-1}$) at the preceding increment ($i - 1$), as described below is considered to be *eliminated* (i.e., the product of the proportion of actively infected individuals (I_{i-1}) at the preceding increment and the human population size (N) is less than 0.1), then the proportion of human population actively infected is set to zero, $I_i = 0$, otherwise, it is calculated as the difference between the proportion of population never infected at the current time step (i) and at the preceding increment ($i - 1$), thus, at the given increment (i),

$$I_i = \begin{cases} 0, & I_i N < 0.1 \\ S_i - S_{i-1}, & I_i N \geq 0.1 \end{cases} \quad \text{Eq. (12)}$$

Epidemic status

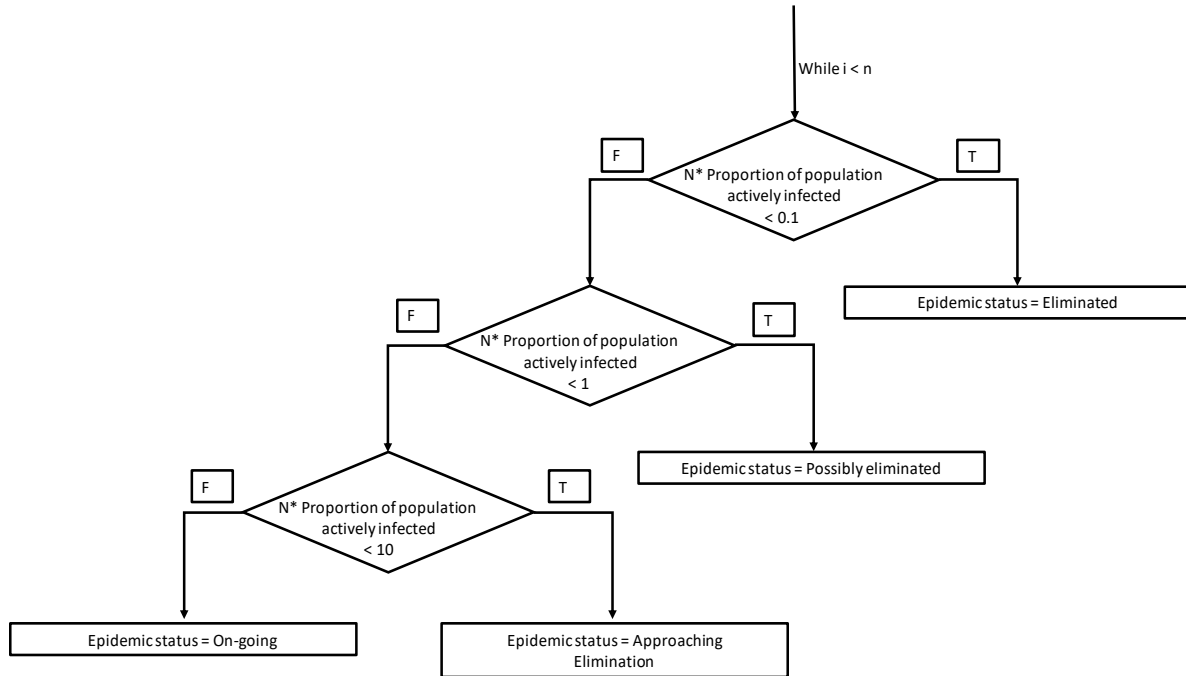
In order to assess if the infection is eliminated or not, we categorize epidemic in four different status (E_s): 1) on-going, 2) approaching elimination, 3) possibly eliminated, and 4) eliminated. Therefore, depending on the current number of actively infected individuals in the population calculated as the product of the proportion of actively infected individuals (I_i) and the human population size (N), thus

$$E_{s,i} = I_i N \quad \text{Eq. (13)}$$

We assigned different threshold values and conditions to determine the epidemic status. That means the epidemic is assumed to be eliminated at predictions of less than 0.1 cases per day, when there actually remains up to a 10% chance that it persists, otherwise, it is possibility eliminated, approaching elimination or the epidemic is on-going, thus,

$$E_{s,i} = \begin{cases} \text{Eliminated,} & I_i N < 0.1 \\ \text{Possibly Eliminated,} & 0.1 \leq I_i N < 1 \\ \text{Approaching Elimination,} & 1 \leq I_i N < 10 \\ \text{Epidemic On-going,} & I_i N \geq 10 \end{cases} \quad \text{Eq. (14)}$$

A graphical representation of logic sequence to determine if an epidemic is *ongoing*, *approaching elimination*, *possibly eliminated*, or *eliminated* is presented in supplementary figure 4.



Supplementary figure 4: Illustration of the logic flow implemented in deciding whether the epidemic is eliminated or not.

Proportion of population actively infected, confirmed, contact traced and isolated

The proportion of population that was not only actively infected and confirmed (τ) but also contact (γ) traced and effectively isolated ($I_{i,\tau,\gamma}$) is simply given by the product of the proportion of human population actively infected and tested ($I_{i,\tau}$), the proportion of all new cases confirmed ($\theta_{i,\tau}$) and the proportional reduction of secondary transmission by contact tracing and isolation follow up on such index confirmed cases (ρ_γ):

$$I_{i,\tau,\gamma} = I_{i,\tau} \theta_{i,\tau} (1 - \rho_\gamma) \quad \text{Eq. (15)}$$

However, in order to compute the number of tested and confirmed cases in the population ($N_{i,\tau}$) as described below, we first need to compute the number of new symptomatic ($N_{i,1} = N_{i,m+s}$), severely symptomatic ($N_{i,s}$), and incidents of mild symptoms unrelated to COVID-19 ($N_{i,\Omega}$) in the population. For completeness, we also calculate the number of new asymptomatic cases ($N_{i,0}$). Thereafter, we then calculate the number of deaths (N_μ), after calculating first the number of new Intensive Care Unit (ICU) cases ($N_{u,1}$), new number of ICU cases exceeding capacity ($N_{u,0}$).

New cases

The number of new cases in the population (N_i) is simply given by the product of the proportion of human population actively infected (I_i) and the human population size (N), thus, at the given increment (i),

$$N_i = I_i N \quad \text{Eq. (16)}$$

New symptomatic and asymptomatic cases

The new symptomatic cases ($N_{i,1}$), inclusive of both mild and severe manifestations (so can also be described as $(N_{i,m+s})$ at a given incremental period is calculated as the product of the complement of the proportion of all cases who lack, don't notice or don't report any overt symptoms associated with the infection (θ_0) and number of new cases in the population (N_i), thus, at the given increment(i),

$$N_{i,1} = N_i(1 - \theta_0) \quad \text{Eq. (18)}$$

Correspondingly, the proportion of new asymptomatic cases ($N_{i,0}$) is calculated as all other cases that are not identified as symptomatic by the individual or the health system, thus, at the given increment(i),

$$N_{i,0} = N_i\theta_0 \quad \text{Eq. (19)}$$

New mild and severe symptomatic cases

The number of new severely symptomatic cases at a given increment of time ($N_{i,s}$) is simply the product of the number of severe cases and proportion of all symptomatic cases ($N_{i,1}$) exhibiting and reporting with severe symptoms:

$$N_{i,s} = \theta_{1,s}N_{i,1} \quad \text{Eq. (20)}$$

New symptomatic cases

The number of new symptomatic cases which are only mild($N_{i,m}$) in terms of clinical disease are calculated as the remainder of all symptomatic cases:

$$N_{i,m} = \theta_{1,m}N_{i,1} = (1 - \theta_{1,s}) N_{i,1} \quad \text{Eq. (21)}$$

New incidents of mild symptoms unrelated to COVID-19

The number of new incidents of mild symptoms of any kind at a given increment of time ($N_{i,\Omega+m}$) is given by the product of the baseline incidence of unrelated mild symptoms (Ω)- that are similar to COVID-19 but caused by other common pathogens like the common cold, influenza, malaria, etc, duration of infection (d_i) and the size of the human population (N), added to the number of mild new symptomatic COVID-19 cases ($N_{i,m}$):

$$N_{i,\Omega+m} = \Omega Nd_i + N_{i,m} \quad \text{Eq. (22)}$$

The proportion of all new cases confirmed

The proportion of all new cases confirmed ($\theta_{i,\tau}$) at a given time depends on whether the number of all new cases in the population (N_i) at a given time (i) is greater than the elimination threshold value (Equation 10). At the given increment, $\theta_{i,\tau}$ is the quotient of confirmed number of cases ($N_{i,\tau}$) as described below divided by the number of all new cases if the number of all new cases is greater than 0.1, otherwise, it is zero, thus,

$$\theta_{i,\tau} = \begin{cases} N_{i,\tau}/N_i, & N_i > 0.1 \\ 0, & N_i \leq 0.1 \end{cases} \quad \text{Eq. (23)}$$

New confirmed cases

The number new confirmed cases ($N_{i,\tau}$) is calculated assuming that all severe cases are tested as an absolute priority, but that mild cases are indistinguishable from many common illnesses causing a background rate of similar non-specific symptoms, so all testing capacity unused by the severe COVID-19 cases is randomly allocated to as many incidents of mild disease as possible, regardless of whether they are caused by COVID-19. The first step towards calculating $N_{i,\tau}$ is to first calculate the total number of tested individuals, which is the product of the maximum achievable testing rate (τ) – that is proportion of the entire population that can be tested per week, the human population size (N), and the duration of infection (d_i) (i.e., $\tau d_i N$) and then comparing it with the number of new severely symptomatic cases ($N_{i,1,s}$) at a given increment of time. In turn, $N_{i,\tau}$ is calculated as the number of severely symptomatic cases ($N_{i,s}$) added to the quotient of the product of the difference between total number of tested individuals ($\tau d_i N$) and the number of new severely symptomatic cases ($N_{1,s}$) and the difference between the number of new symptomatic cases ($N_{i,m}$) and number of new severely symptomatic divide by incidents of symptoms (N_{Ω}), thus,

$$N_{i,\tau} = \begin{cases} N_{i,s} + \frac{(\tau d_i N - N_{i,s}) N_{i,m}}{N_{\Omega+m}}, & \tau d_i N > N_{i,s} \\ \tau d_i N, & \tau d_i N \leq N_{i,s} \end{cases} \quad \text{Eq. (24)}$$

New cases requiring intensive care unit (ICU) admission

The number of new cases requiring ICU admission over a given time interval time ($N_{i,u}$) is calculated by the product of the number of new symptomatic cases ($N_{i,1}$) and the proportion of mild and severe symptomatic cases requiring critical care ($\theta_{1,c}$):

$$N_{i,u} = \theta_{1,c} N_{i,1} \quad \text{Eq. (25)}$$

New ICU cases exceeding available capacity

The new ICU cases exceeding available capacity ($N_{i,u,0}$) over a given time interval is calculated by first comparing the number of new ICU cases ($N_{i,u}$) with the product of the intensive care unit (ICU) capacity in terms of absolute bed numbers, which is in turn calculated as the product of the maximum achievable proportion of the population that could be admitted to an ICU at a given time (u) – and the human population size (i.e., uN). If $N_{i,u,1}$ is greater than uN , then $N_{i,u,0}$ is calculated as the difference between number of new cases needing ICU ($N_{i,u}$) and the population that could be admitted to ICU, otherwise it is zero:

$$N_{i,u,0} = \begin{cases} N_{i,u} - uN, & N_{i,u} > uN \\ 0, & N_{i,u} \leq uN \end{cases} \quad \text{Eq. (26)}$$

New Deaths

The number of new deaths in the population occurring over a given time interval ($N_{i,\mu}$) can then be calculated by multiplying the case fatality rate in ICUs – that is the proportion of cases needing intensive care who access it but die nevertheless (μ_1) – and the difference between the new number of cases needing ICU ($N_{i,u}$) and new cases needing ICU that are in excess of capacity ($N_{i,u,0}$) added to the product of the case fatality rate of critical cases outside ICUs – that is the proportion of cases needing intensive care but who cannot access it and die subsequently (μ_0) – and the number of new cases needing ICU admission in excess of capacity $N_{i,u,0}$:

$$N_{i,\mu} = (N_{i,u,1} - N_{i,u,0})\mu_1 + \mu_0 N_{i,u,0} \quad \text{Eq. (27)}$$

Availability of Excel® spreadsheet, R statistical package code, and Software/GUI

The tools in both user-friendly Shiny® and MS Excel® formats can be accessed freely online via (<https://skiware.shinyapps.io/COVID19/>) for users to create their own epidemic trajectories and/or access pre-set response scenarios as described in the main document. For those who are not familiar with the Shiny application might opt to use MS Excel® - vice versa is true. In addition, for those who wish to satisfy themselves that the calculations make intuitive sense - the Excel® version provides a complementary spreadsheet format in which the formula for each cell can be critically examined. Otherwise, the model code is also developed using the R statistical computing application³⁹ version 3.4.2. The graphical user interface application is developed, deployed, and hosted using Shiny from RStudio.

References

1. Anastassopoulou C, Russo L, Tsakris A, Siettos C. Data-based analysis, modelling and forecasting of the COVID-19 outbreak. *PLoS One* 2020; **15**(3): e0230405.
2. Shim E, Tariq A, Choi W, Lee Y, Chowell G. Transmission potential and severity of COVID-19 in South Korea. *Int J Infect Dis* 2020; Electronic publication ahead of print.
3. Mizumoto K, Kagaya K, Chowell G. Early epidemiological assessment of the transmission potential and virulence of coronavirus disease 2019 (COVID-19) in Wuhan City: China, January-February, 2020. *MedRxiv* 2020.
4. Read JM, Bridgen JR, Cummings DA, Ho A, Jewell CP. Novel coronavirus 2019-nCoV: Early estimation of epidemiological parameters and epidemic predictions. *MedRxiv* 2020.
5. Sanche S, Lin YT, Xu C, Romero-Severson E, Hengartner N, Ke R. The Novel Coronavirus, 2019-nCoV, is Highly Contagious and More Infectious Than Initially Estimated. *MedRxiv* 2020.
6. Wu JT, Leung K, Leung GM. Nowcasting and forecasting the potential domestic and international spread of the 2019-nCoV outbreak originating in Wuhan, China: a modelling study. *Lancet* 2020; **395**(10225): 689-97.
7. Roosa K, Lee Y, Luo R, et al. Real-time forecasts of the COVID-19 epidemic in China from February 5th to February 24th, 2020. *Infect Dis Model* 2020; **5**: 256-63.
8. Roosa K, Lee Y, Luo R, et al. Short-term Forecasts of the COVID-19 Epidemic in Guangdong and Zhejiang, China: February 13-23, 2020. *J Clin Med* 2020; **9**(2) Electronic publication ahead of print.
9. Kucharski AJ, Russell TW, Diamond C, et al. Early dynamics of transmission and control of COVID-19: a mathematical modelling study. *Lancet Infect Dis* 2020; Electronic publication ahead of print.

10. Choi SC, Ki M. Estimating the reproductive number and the outbreak size of Novel Coronavirus disease (COVID-19) using mathematical model in Republic of Korea. *Epidemiol Health* 2020; e2020011.
11. Chen TM, Rui J, Wang QP, Zhao ZY, Cui JA, Yin L. A mathematical model for simulating the phase-based transmissibility of a novel coronavirus. *Infect Dis Poverty* 2020; **9**(1): 24.
12. Tang B, Wang X, Li Q, et al. Estimation of the Transmission Risk of the 2019-nCoV and Its Implication for Public Health Interventions. *J Clin Med* 2020; **9**(2) ; Electronic publication ahead of print.
13. Kam KQ, Yung CF, Cui L, et al. A Well Infant with Coronavirus Disease 2019 (COVID-19) with High Viral Load. *Clin Infect Dis* 2020; Electronic publication ahead of print.
14. Linton NM, Kobayashi T, Yang Y, et al. Incubation Period and Other Epidemiological Characteristics of 2019 Novel Coronavirus Infections with Right Truncation: A Statistical Analysis of Publicly Available Case Data. *J Clin Med* 2020; **9**(2) ; Electronic publication ahead of print.
15. Hu Z, Song C, Xu C, et al. Clinical characteristics of 24 asymptomatic infections with COVID-19 screened among close contacts in Nanjing, China. *Sci China Life Sci* 2020; Electronic publication ahead of print.
16. Rothe C, Schunk M, Sothmann P, et al. Transmission of 2019-nCoV Infection from an Asymptomatic Contact in Germany. *N Engl J Med* 2020; **382**(10): 970-1.
17. Zou L, Ruan F, Huang M, et al. SARS-CoV-2 Viral Load in Upper Respiratory Specimens of Infected Patients. *N Engl J Med* 2020; **382**: 1177–9.
18. Tang A, Tong ZD, Wang HL, et al. Detection of Novel Coronavirus by RT-PCR in Stool Specimen from Asymptomatic Child, China. *Emerg Infect Dis* 2020; **26**(6) ; Electronic publication ahead of print.
19. Xing Y, Mo P, Xiao Y, Zhao O, Zhang Y, Wang F. Post-discharge surveillance and positive virus detection in two medical staff recovered from coronavirus disease 2019 (COVID-19), China, January to February 2020. *Euro Surveill* 2020; **25**(10).
20. National Bureau of Statistics & Ministry of Finance and Planning Dar es Salaam and the Office of the Chief Government Statistician & Ministry of Finance and Planning Zanzibar. National Population Projections: United Republic of Tanzania, 2018.
21. BMJ Best Practice. Common Cold. *Br Med J* 2020.
22. Ghinai I, McPherson TD, Hunter JC, et al. First known person-to-person transmission of severe acute respiratory syndrome coronavirus 2 (SARS-CoV-2) in the USA. *Lancet* 2020; Electronic publication ahead of print.
23. Wang C, Liu L, Hao X, et al. Evolving Epidemiology and Impact of Non-pharmaceutical Interventions on the Outbreak of Coronavirus Disease 2019 in Wuhan, China. *MedRxiv* 2020.
24. Qiu H, Wu J, Hong L, Luo Y, Song Q, Chen D. Clinical and epidemiological features of 36 children with coronavirus disease 2019 (COVID-19) in Zhejiang, China: an observational cohort study. *Lancet Infect Dis* 2020; Electronic publication ahead of print.
25. Su L, Ma X, Yu H, et al. The different clinical characteristics of corona virus disease cases between children and their families in China - the character of children with COVID-19. *Emerg Microbes Infect* 2020; **9**(1): 707-13.
26. Nishiura H, Kobayashi T, Suzuki A, et al. Estimation of the asymptomatic ratio of novel coronavirus infections (COVID-19). *Int J Infect Dis* 2020; Electronic publication ahead of print.
27. Nishiura H, Kobayashi T, Yang Y, et al. The Rate of Underascertainment of Novel Coronavirus (2019-nCoV) Infection: Estimation Using Japanese Passengers Data on Evacuation Flights. *J Clin Med* 2020; **9**(2); Electronic publication ahead of print.
28. Mizumoto K, Kagaya K, Zarebski A, Chowell G. Estimating the asymptomatic proportion of coronavirus disease 2019 (COVID-19) cases on board the Diamond Princess cruise ship, Yokohama, Japan, 2020. *Euro Surveill* 2020; **25**(10); Electronic publication ahead of print.

29. Gostic K, Gomez AC, Mummah RO, Kucharski AJ, Lloyd-Smith JO. Estimated effectiveness of symptom and risk screening to prevent the spread of COVID-19. *eLife* 2020; **9**; Electronic publication ahead of print.
30. Li R, Pei S, Chen B, et al. Substantial undocumented infection facilitates the rapid dissemination of novel coronavirus (SARS-CoV2). *Science* 2020; Electronic publication ahead of print.
31. Nishiura H, Linton NM, Akhmetzhanov AR. Serial interval of novel coronavirus (COVID-19) infections. *Int J Infect Dis* 2020; **93**: 284-6.
32. Guan WJ, Ni ZY, Hu Y, et al. Clinical Characteristics of Coronavirus Disease 2019 in China. *N Engl J Med* 2020; Electronic publication ahead of print.
33. Yang S, Cao P, Du P, et al. Early estimation of the case fatality rate of COVID-19 in mainland China: a data-driven analysis. *Ann Transl Med* 2020; **8**(4): 128.
34. Engdahl Mtango S, Lugazia E, Baker U, Johansson Y, Baker T. Referral and admission to intensive care: A qualitative study of doctors' practices in a Tanzanian university hospital. *PLoS One* 2019; **14**(10): e0224355.
35. Pung R, Chiew CJ, Young BE, et al. Investigation of three clusters of COVID-19 in Singapore: implications for surveillance and response measures. *Lancet* 2020; **395**(10229): 1039-46.
36. Kiware SS, Chitnis N, Moore SJ, Devine GJ, Majambere S, Killeen GF. Simplified models of vector control impact upon malaria transmission by zoophagic mosquitoes. *PLoS One* 2012; **7**: e37661.
37. Killeen GF, Kiware SS, Okumu FO, et al. Going beyond personal protection against mosquito bites to eliminate malaria transmission: population suppression of malaria vectors that exploit both human and animal blood. *BMJ Glob Health* 2017; **2**(2): e000198.
38. Anderson RM, May RM. Infectious diseases of humans. Oxford: Oxford University Press; 1991.
39. R Core Team. R: A language and environment for statistical computing. Vienna, Austria: R Foundation for Statistical Computing; 2013.