

**Text S1. Parameterisation.**

We selected those co-occurring endemic diseases which, according to the Global Burden of Disease Survey (GBD) 2017 <sup>1</sup>, had an incidence of at least one case per year in a reference country (Uganda) and did not meet either of two exclusion criteria. These diseases were excluded if 1) their case definitions (according to either the World Health Organization or the U.S. Centers for Disease Control and Prevention) depend upon the presence of a specific clinical feature not known to be associated with either EVD or MVD (e.g., we excluded tetanus due to the lack of spasms), and/or 2) they present with highly localised symptoms. Of diseases we considered for inclusion, we excluded eight syndromes for symptom specificity: tetanus (jaw stiffness and/or spasm), meningococcal and other causes of meningitis (neck stiffness; we included meningococcal septicaemia), measles (maculopapular rash), varicella and herpes zoster (papular rash), whooping cough (paroxysm, inspiratory whoop, or post-tussive vomiting), and syphilis (chancre). We also excluded five syndromes due to localisation: genital herpes, viral skin diseases, gonococcal infection, chlamydial infection, and scabies.

We split diseases according to their clinically distinct syndromes (e.g., dengue vs. severe dengue <sup>2</sup>). We included the following syndromes in analysis: Ebola virus disease, Marburg virus disease, Lassa fever, leptospirosis, Rift Valley fever, epidemic typhus, Crimean-Congo haemorrhagic fever, acute hepatitis A, acute hepatitis B, acute hepatitis C, acute hepatitis E, upper and lower respiratory infections, invasive non-typhoidal Salmonella, typhoid fever, other diarrhoeal diseases, yellow fever, dengue (uncomplicated or severe), and malaria (complicated or uncomplicated).

We included symptoms which 1) were commonly reported present in rare VHF outbreak reports, and 2) were included in case definitions for other diseases under consideration (e.g., jaundice for yellow fever). The signs and symptoms we considered were: fever, diarrhoea, death, fatigue or weakness, anorexia, nausea and/or vomiting, abdominal pain, any haemorrhage or bleeding, sore throat, cough, hiccups, headache, jaundice, conjunctivitis, myalgia and/or arthralgia, rash, hepato- and/or splenomegaly, and any severe neurological manifestation (e.g., seizure, encephalitis).

For each disease-feature pair, we estimated expected clinical feature occurrence probabilities, as well as variance in these estimates, based on a literature search. We gathered clinical feature data from outbreak reports, medical and epidemiological textbooks, and peer-reviewed articles. In many cases, clinical feature probabilities were only described in qualitative terms (e.g., “presenting with fever, often accompanied by jaundice”), and the presentation of quantitative data was inconsistent (e.g., in terms of

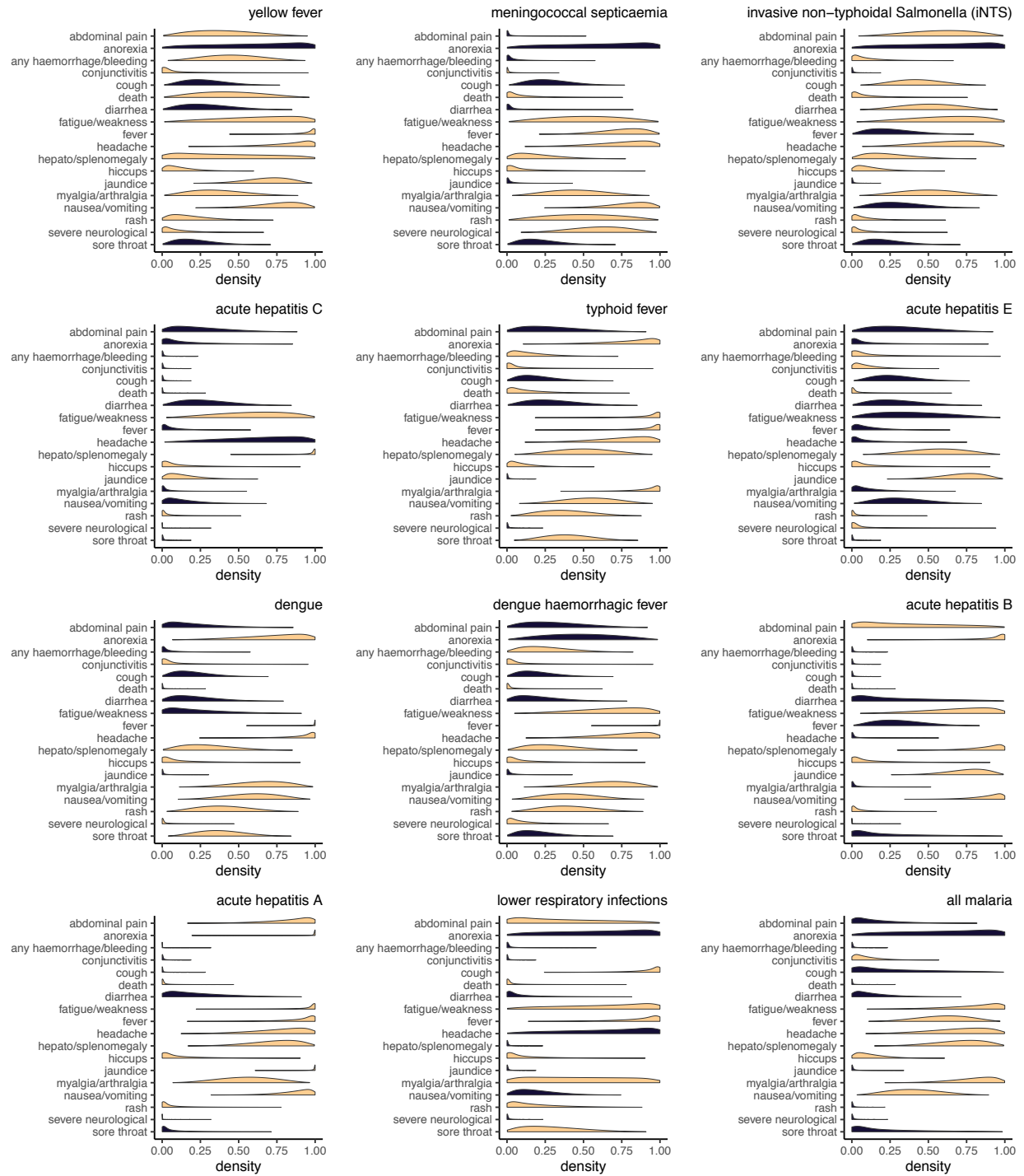
clinical features presented, setting, sample size, generalisability). Furthermore, data was inconsistently available across syndromes, with relatively large and consistent samples available for Ebola virus disease and little recent data on acute manifestations of hepatitis B and C, despite the relative rarity of EVD. Based on the collected literature (Table S1), we assigned clinical feature probabilities and variances (Figure S1) using expert opinion, accounting for: 1) number of studies available; 2) study sample sizes; 3) how representative studies are of sub-Saharan Africa in terms of location, outbreak size, cohort, etc.; 4) reliability of estimates (e.g., probabilities from meta-analyses or “common knowledge” descriptions from medical textbooks); and 5) whether variation in estimates appeared more likely to be caused by observational error (e.g., differences in case definitions between studies) or genuine difference in clinical presentation (e.g., due to the effects of treatment or for syndromes encompassing multiple possible pathogenic aetiologies).

We gathered incidences from the GBD survey, where available, pooled across age and sex. For the disease syndromes not included in the GBD, we estimated regional spillover rates based on historical outbreak data (Table S1) and a variable scalar accounting for observational uncertainty. As estimated detection probabilities of these rarer diseases are often poor<sup>3-5</sup>, we performed a sensitivity analysis on all reported results incorporating variation in this scalar (Text S3).

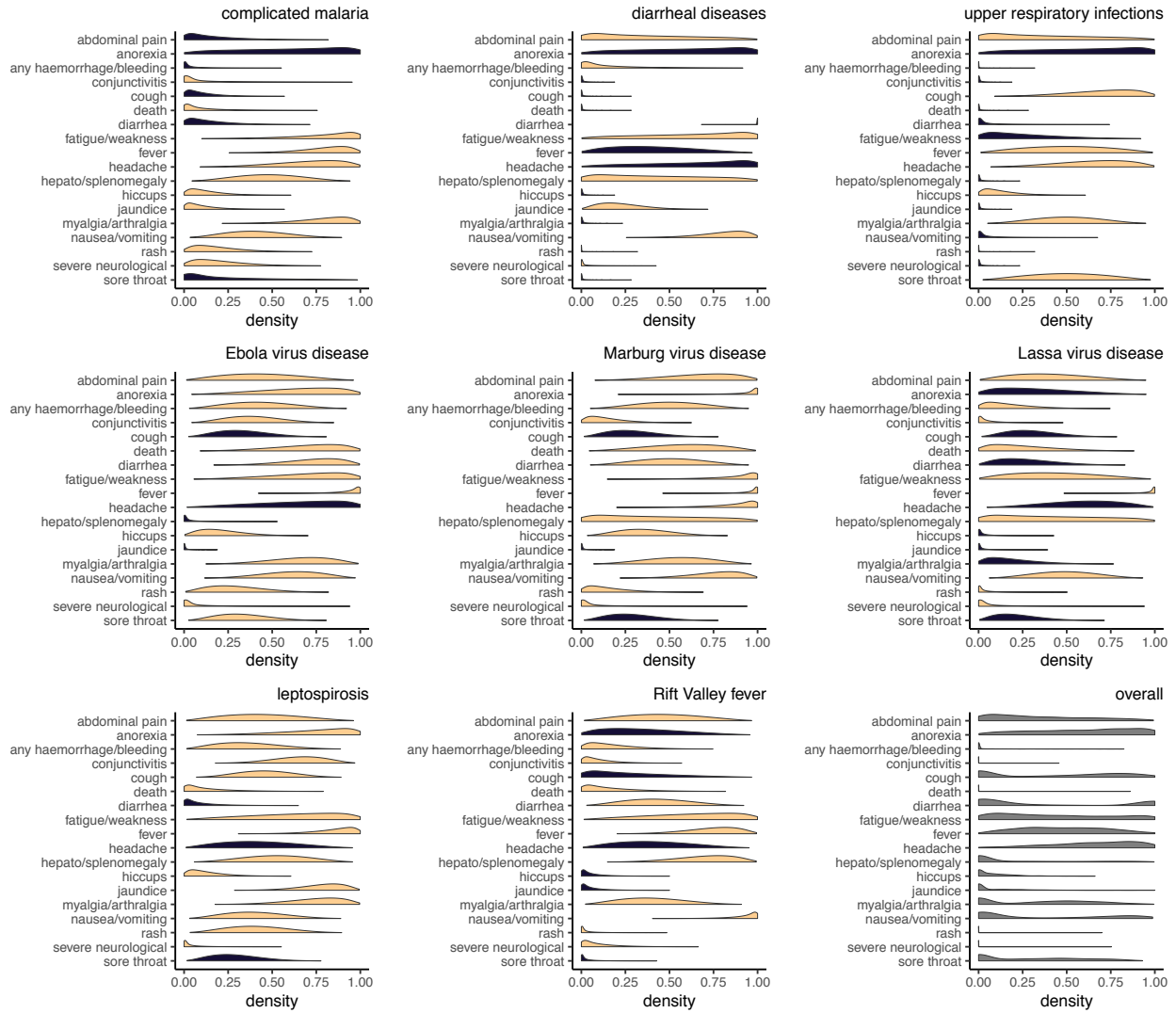
To compare the sensitivity of different methods of syndromic surveillance, we defined three sets of signs and symptoms associated with each syndrome: all eighteen clinical features for which we collected data; “typical features,” i.e., those clinical features with expected occurrence probabilities for the true syndrome greater than the incidence-weighted occurrence probability for all syndromes (and the orange features in Fig. S1); and minimal features for haemorrhagic fevers (i.e., death, haemorrhage, fever, jaundice, and hiccups).

**Table S1. Key sources of clinical feature parameters and incidence estimates for all syndromes, including base spillover rates (i.e., relative rates of spillover of zoonotic syndromes over all sub-Saharan Africa).**

Syndrome	Clinical feature sources	Incidence sources	Notes
yellow fever	6–15	1,16,17	
meningococcal septicaemia	18–21	1	35% of meningococcal disease <sup>21</sup>
invasive non-typhoidal Salmonella (iNTS)	22–26	1,16	
acute hepatitis C	27–35	1	
typhoid fever	36–46	1,16	
acute hepatitis E	47–58	1	
dengue	59–71	1,72	
dengue haemorrhagic fever	59–71	1,72	23% of all dengue cases <sup>70</sup>
acute hepatitis B	73–77	1	
acute hepatitis A	78–82	1	
lower respiratory infections	83–90	1	
all malaria	91–94	1,95,96	
complicated malaria	91–94,97,98	1,95,96	4% of all malaria cases <sup>93</sup>
diarrheal diseases	16,99–104	1,16	
upper respiratory infections	105–109	1	
Ebola virus disease	110–120	121,122	Base spillover rate: 1 year <sup>-1</sup>
Marburg virus disease	123,124	125	Base spillover rate: 0.5 year <sup>-1</sup>
epidemic typhus	126–132	4,132	Base spillover rate: 100 year <sup>-1</sup>
Lassa virus disease	133–137	138	Base spillover rate: 5 year <sup>-1</sup>
leptospirosis	139,140	3	Base spillover rate: 500 year <sup>-1</sup>
Rift Valley fever	141–147	146	Base spillover rate: 5 year <sup>-1</sup>
Crimean-Congo hamorrhagic fever	148–151	151	Base spillover rate: 1 year <sup>-1</sup>



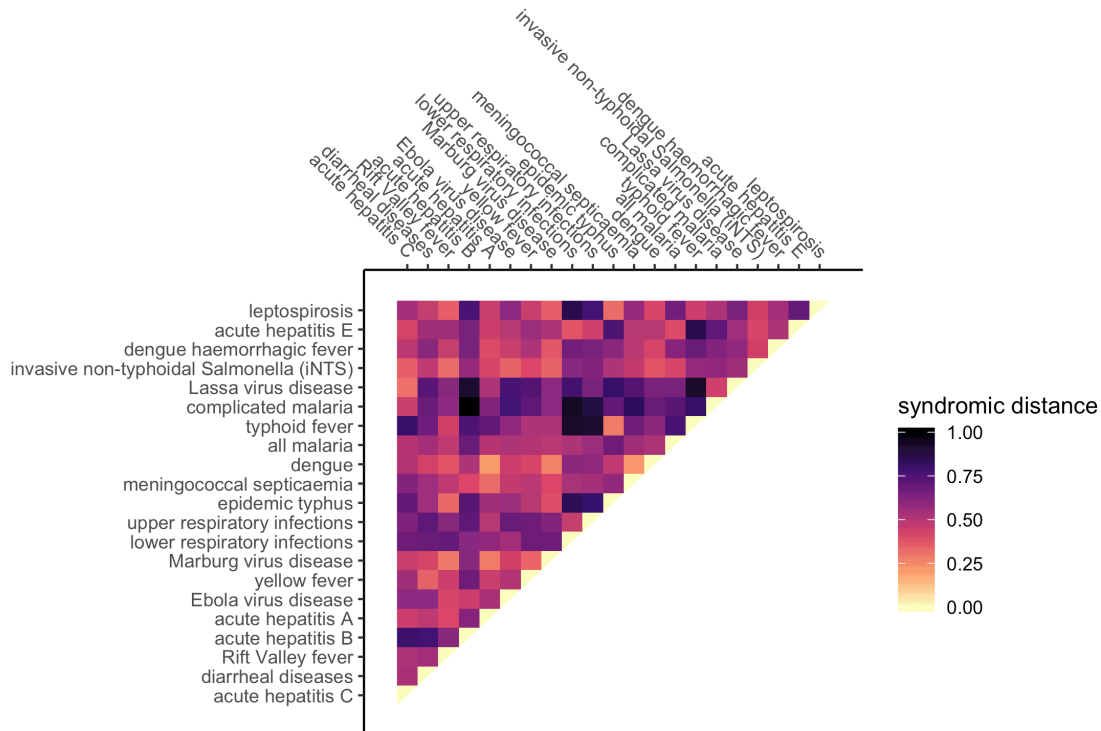
**Figure S1. Clinical feature occurrence probabilities for all syndromes as estimated for sub-Saharan Africa overall. Typical symptoms—i.e., those more common for a syndrome than for all syndromes, weighted by incidence—are shown in orange.**



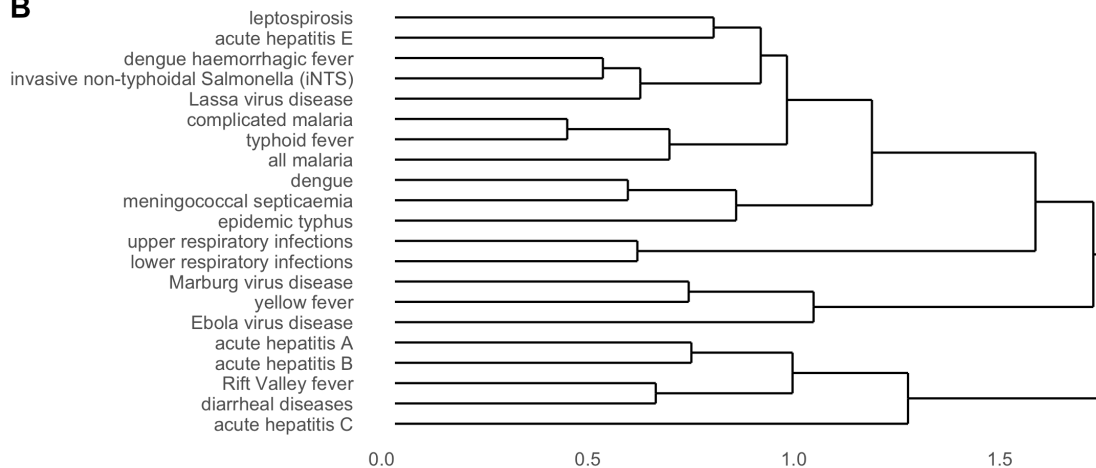
**Figure S1 (cont.). Clinical feature occurrence probabilities for all syndromes as estimated for sub-Saharan Africa overall. Typical symptoms—i.e., those more common for a syndrome than for all syndromes, weighted by incidence—are shown in orange.**

Text S2. Estimating clinical feature collinearity and clustering.

A



B

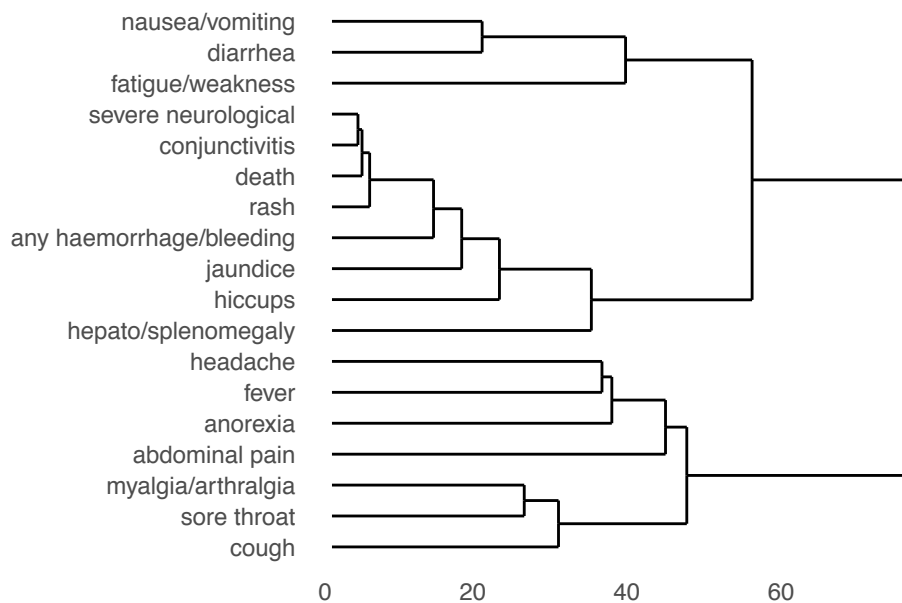


**Figure S2. A) Estimated syndromic distances (as a proportion of maximum syndromic distance) of selected infectious disease syndromes, based on average incidence across sub-Saharan Africa. In contrast to a correlation plot, higher distances (darker colours) indicate further separation between the syndromes, and vice versa. B) dendrogram showing syndrome clusters according to their estimated distances and agglomerative hierarchical clustering.**

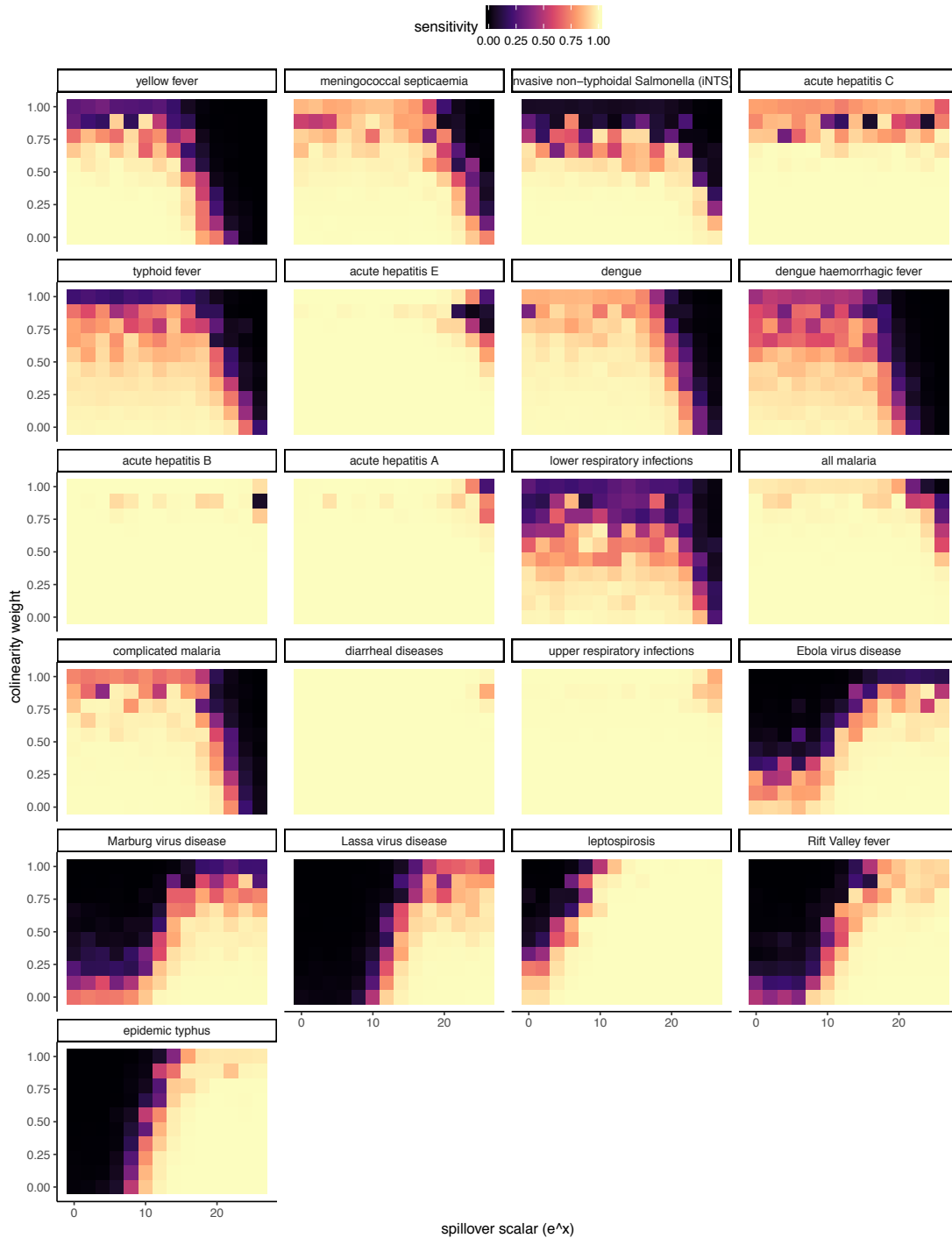
While some rare haemorrhagic fevers—especially Ebola virus disease, Marburg virus disease, typhoid fever, and yellow fever—are closely syndromically related to one another, they are separated by high

(>50%) syndromic distances from most other syndromes (Fig. S2). Others—including Lassa fever, Rift Valley fever, and leptospirosis—have relatively small syndromic distances from a range of more common syndromes, especially those related to dengue virus and malaria.

Without individual-level data, we could not account for fine-scale, within-syndrome sign/symptom clustering; however, we attempted to account for coarse population-level clustering and collinearity of clinical features based on simulations of clinical features across a population. To do so, we first simulated clinical features of 10,000 cases of all syndromes, with syndromes sampled according to average incidence across sub-Saharan Africa (at varying spillover scalars; Text S3) and clinical features sampled according to the clinical profiles shown in Fig. S1. We assumed clinical features within a syndrome to be independently distributed. Coarse symptom clustering (using agglomerative, complete-linkage hierarchical clustering) identifies clusters of relatively rare and severe clinical features—such as death, severe neurological manifestations, conjunctivitis, haemorrhage, and jaundice—as well as of common subjective symptoms—such as headache, anorexia, and abdominal pain (Fig. S3). To account for this clustering within our core algorithm, we used the same simulated linelists to estimate a one-dimensional collinearity scalar ( $\theta$ ) for all clinical features using t-SNE <sup>152</sup>.



**Figure S3. Dendrogram representing population-level relationships between various clinical signs and symptoms, based on application of agglomerative hierarchical clustering to a simulated dataset of 10,000 cases of all 21 syndromes, with each syndrome occurring proportional to its incidence.**



**Figure S4. Estimated sensitivity of an aetiological identification algorithm to simulated outbreaks of each syndrome, as a function of two tuning parameters: a spillover scalar and a collinearity weight. The spillover scalar increases prior probabilities of rare zoonotic syndromes (i.e., Ebola virus disease, Marburg virus disease, Lassa virus disease, leptospirosis, Rift Valley fever, and epidemic typhus). The collinearity weight mediates the contribution of each clinical sign or symptom to posterior probabilities; a weight of 0 indicates all signs and symptoms are given equal weight, while a weight of 1 indicates the contributions of signs and symptoms are proportional to collinearity factors ( $\theta$ ) calculated from t-SNE.**





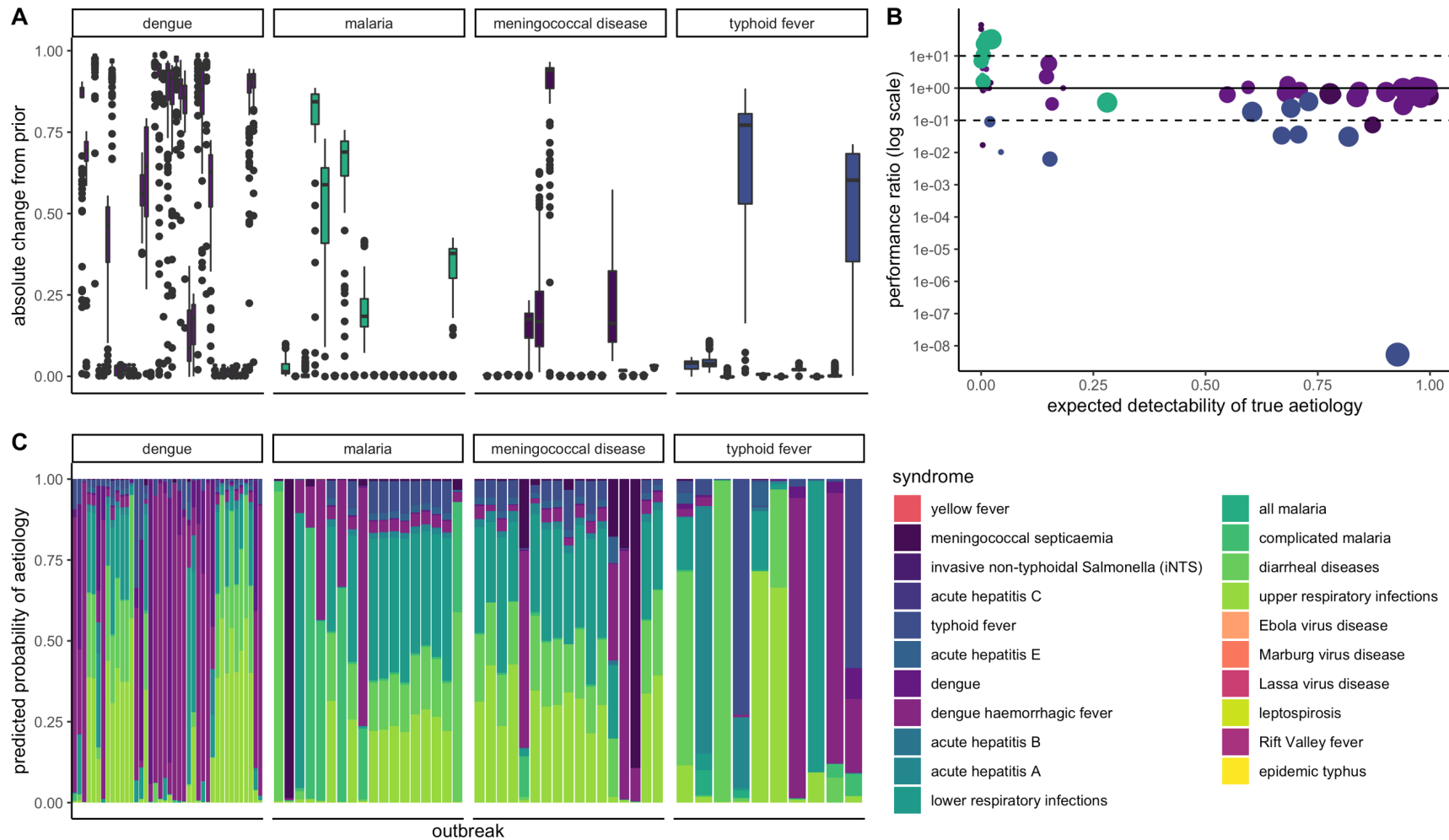
**Figure S5. Estimated specificity of an aetiological identification algorithm to simulated outbreaks of each syndrome, as a function of two tuning parameters: a spillover scalar and a collinearity weight. The spillover scalar increases prior probabilities of rare zoonotic syndromes (i.e., Ebola virus disease, Marburg virus disease, Lassa virus disease, leptospirosis, Rift Valley fever, and epidemic typhus). The collinearity weight mediates the contribution of each clinical sign or symptom to posterior probabilities; a weight of 0 indicates all signs and symptoms are given equal weight, while a weight of 1 indicates the contributions of signs and symptoms are proportional to collinearity factors ( $\theta$ ) calculated from t-SNE.**

**Text S5. Algorithm calibration and performance.**

To investigate the effects of the spillover scalar and estimated spillover collinearity constants ( $\theta_k$ ), we estimated the sensitivity and specificity of the aetiological prediction algorithm on 100 simulated cases of each syndrome in sub-Saharan Africa overall for all combinations of spillover scalar in  $e^{\{0,1,\dots,15\}}$  and collinearity weights in  $\{0,0.1,\dots,1\}$  (Figure S4). The algorithm was most sensitive to all syndromes with a collinearity weight of zero, without a corresponding loss in specificity (Figure S5). As expected, the sensitivity of the algorithm to rare zoonotic syndromes increased with the spillover scalar, while sensitivity to endemic diseases decreased at extremely high values. For figures in the main text, we selected a spillover scalar of 10,000 (i.e., assuming these rare syndromes are about 10,000 times as common as observed) to achieve high sensitivity to both sets of syndromes; we also ignored clinical feature collinearity in subsequent analyses. With real-world individual-level data, the relationships between clinical features could be better established and used to refine our models.

After calibration our detection algorithm, we tested its ability to identify clusters of clinical features from real outbreak data (Fig. S6). We applied it to a previously-published, publicly available database of febrile outbreaks in South Asia<sup>153</sup>. This dataset included 87 outbreaks of typhoid fever, malaria, dengue, and meningococcal disease in Bangladesh, India, Nepal, Pakistan, and Sri Lanka. As these reports did not include individual-level data, we simulated 10 linelists of up to 100 cases for each, based on reported outbreak-level clinical feature probabilities (assuming independence of each sign/symptom). We assumed no spillover of Ebola virus disease and those syndromes not listed in the GBD (i.e., Marburg virus disease, epidemic typhus, Lassa virus disease, leptospirosis, Rift Valley fever, and Crimean-Congo haemorrhagic fever).

To estimate performance of the algorithm despite highly variable data quality, we define the performance ratio of a prediction as the predicted posterior probability of the true aetiology of an outbreak (i.e.,  $\hat{P}_{c,n}$  of true aetiology  $n$ , where all values of  $x_{k,n}$  are drawn from simulated outbreak linelists), divided by the estimated detectability of the true aetiology with the same symptoms reporting (i.e.,  $\hat{P}_{c,n}$  of a simulated outbreak of aetiology  $n$ , where all values of  $x_{k,n}$  are drawn from the clinical presentation estimates shown in Fig. S1 and  $K$  is restricted to the set of reported symptoms). A performance ratio of 1 therefore indicates the algorithm performed exactly as well as expected to identify the outbreak cause, while a performance ratio of 10 means the predicted posterior probability when applied to real data is 10 times its expected value, accounting for the incidence of the target syndromes and clinical features available in the testing dataset.



**Figure S6. Performance of the aetiological identification algorithm applied to 87 outbreaks of dengue, malaria, meningococcal disease, and typhoid fever in South Asia. A) difference between posterior and prior probabilities of current aetiological identification of each outbreak at all cluster sizes between 1 and 100, sorted by outbreak aetiology. B) performance ratio vs. expected detectability at ten cases (i.e., predicted probability of true aetiology when algorithm is applied to real outbreak data over the estimated detectability of ten cases of the same syndrome with the same reported clinical features). Larger points represent more reported symptoms. C) predicted aetiological probabilities of each syndrome for each outbreak, averaged over all cluster sizes between 1 and 100.**

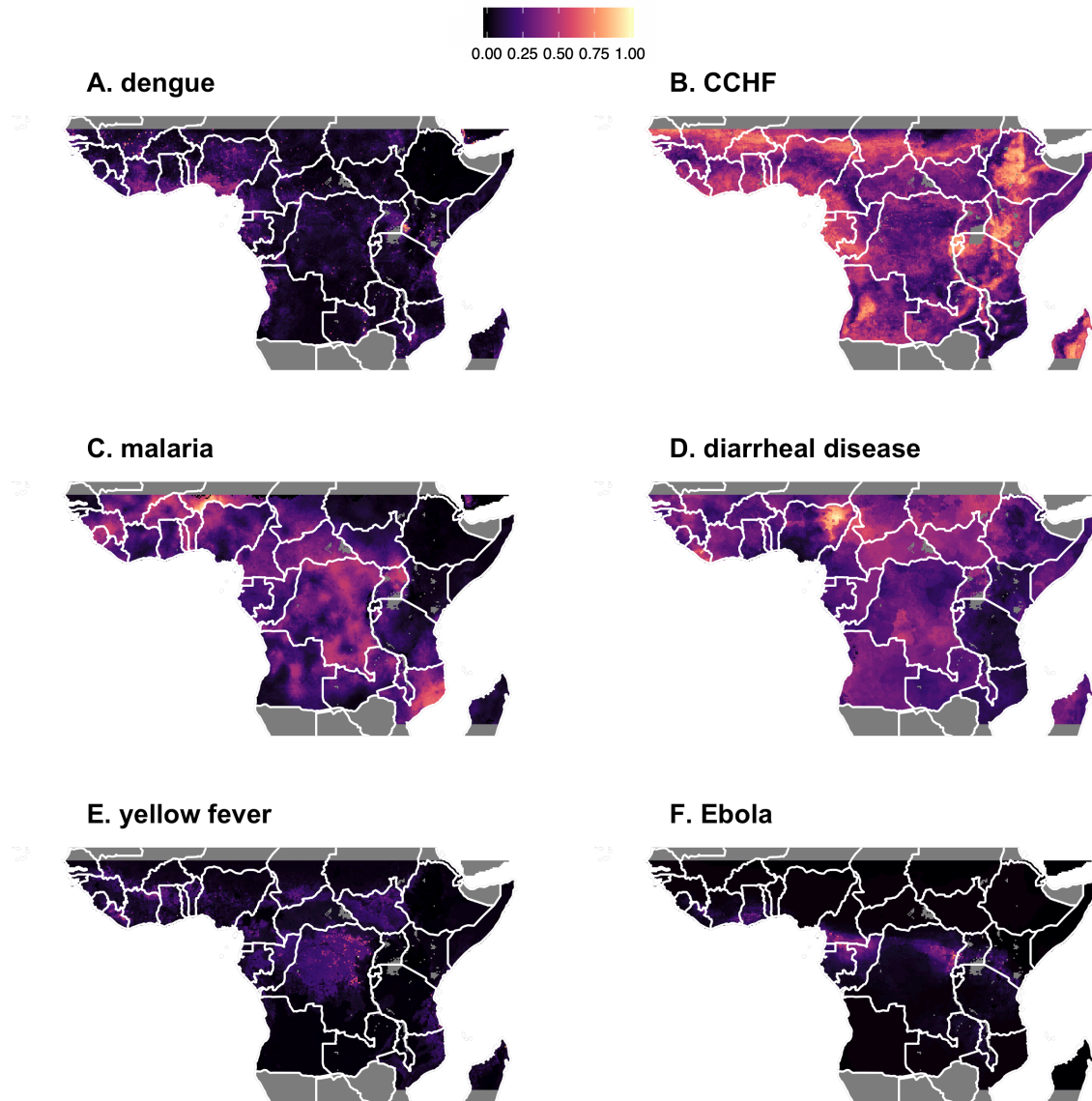
**Text S4. Spatial heterogeneity in Ebola virus disease detectability.**

To examine spatial heterogeneity in detectability and its implications for syndromic surveillance, we selected Ebola virus disease as a case study, expanding our analysis of EVD by:

- 1) including country-level data from the GBD survey<sup>1</sup> across sub-Saharan Africa for all syndromes (with the continued exception of rare VHF's not included in the GBD, the incidences of which were estimated based on spillover rates);
- 2) substituting country-level incidence estimates of malaria with those at a higher spatial resolution, using geospatially gridded estimates from the Malaria Atlas, summed across fevers caused by *Plasmodium falciparum*<sup>96</sup> and *Plasmodium vivax*<sup>95</sup>;
- 3) substituting country-level incidence estimates of dengue, yellow fever, Lassa virus disease, and CCHF with geospatially gridded estimates accounting for ecological suitability (Fig. S7). We generated these estimates by normalising ecological niche maps for each grid cell (previously published for dengue<sup>72</sup>, yellow fever<sup>17</sup>, and CCHF<sup>154</sup>) to sum to country-level incidences; and
- 4) for each cell, scaling the relevant country mean incidences of typhoid fever, iNTS, and other diarrheal diseases using normalised geospatially gridded estimates of diarrhoeal disease incidence in 2015<sup>102,155</sup>. We assume diarrheal disease incidences serve as an adequate proxy for the effects of local water, hygiene, and sanitation risk factors on iNTS and typhoid fever.

For each cell (approximately 29 km<sup>2</sup>), we calculated detectability for each syndrome for cluster sizes between 1 and 30 cases. Finally, to identify “hidden hotspots” with both low EVD detectability and high spillover risk, we scaled our EVD detectability estimates by normalised Ebola virus disease spillover probabilities as estimated based on both its ecological niche in wildlife and its human population density

<sup>121</sup>.



**Figure S7. Maps showing normalised spatial distributions of estimated dengue, Crimean-Congo-haemorrhagic fever, malaria, diarrhoeal disease, and yellow fever incidence rates per capita (A–E, as used to calculate syndromic prior probabilities in aetiological detection algorithm) and Ebola spillover risk based on an ecological niche model (F).**

#### Supplemental references.

1. GBD 2017 Disease and Injury Incidence and Prevalence Collaborators. Global, regional, and national incidence, prevalence, and years lived with disability for 354 diseases and injuries for 195 countries and territories, 1990 – 2017: a systematic analysis for the Global Burden of Disease Study 2017. *Lancet* **392**, 1990–2017 (2018).
2. Hadinegoro, S. R. S. The revised WHO dengue case classification: does the system need to be modified? *Paediatr. Int. Child Health* **32**, 33–38 (2012).
3. de Vries, S. G. *et al.* Leptospirosis in sub-Saharan Africa: a systematic review. *Int. J. Infect. Dis.* **28**, 47–64 (2014).

4. Ratmanov, P., Mediannikov, O. & Raoult, D. Vectorborne diseases in West Africa: geographic distribution and geospatial characteristics. *Trans. R. Soc. Trop. Med. Hyg.* **107**, 273–284 (2013).
5. Glennon, E. E., Jephcott, F. L., Restif, O. & Wood, J. L. N. Estimating undetected Ebola spillovers. *PLoS Negl. Trop. Dis.* **13**, e0007428 (2019).
6. Tuboi, S. H., Costa, Z. G. A., Vasconcelos, P. F. dC & Hatch, D. Clinical and epidemiological characteristics of yellow fever in Brazil: analysis of reported cases 1998-2002. *Trans. R. Soc. Trop. Med. Hyg.* **101**, 169–175 (2007).
7. de Cock, K. M. *et al.* Epidemic yellow fever in eastern Nigeria, 1986. *Lancet* 630–633 (1988).
8. Beeuwkes, H. Clinical manifestations of yellow fever in the West African native as observed during four extensive epidemics of the disease in the Gold Coast and Nigeria. *Trans. R. Soc. Trop. Med. Hyg.* **XXX**, 61–86 (1936).
9. Soghaier, M. A. *et al.* Yellow Fever outbreak in Darfur, Sudan in October 2012; the initial outbreak investigation report. *J. Infect. Public Health* **6**, 370–376 (2013).
10. Wamala, J. F. *et al.* Epidemiological and laboratory characterization of a yellow fever outbreak in northern Uganda, October 2010-January 2011. *Int. J. Infect. Dis.* **16**, e536–e542 (2012).
11. Kwagonza, L. *et al.* Outbreak of yellow fever in central and southwestern Uganda, February-May 2016. *BMC Infect. Dis.* **18**, 548 (2018).
12. Lilay, A. *et al.* Reemergence of yellow fever in Ethiopia after 50 years, 201 : epidemiological and entomological investigations. *BMC Infect. Dis.* **17**, (2017).
13. Grobbelaar, A. A. *et al.* Resurgence of yellow fever in Angola, 2015–2016. *Emerg. Infect. Dis.* **22**, 1854–1855 (2016).
14. Jones, E. M. M. & Wilson, D. C. Clinical features of yellow fever cases at Vom Christian Hospital during the 1969 epidemic on the Jos Plateau, Nigeria. *Bull. World Health Organ.* **46**, 653–657 (1972).
15. Romano, A. P. M. *et al.* Yellow fever outbreaks in unvaccinated populations, Brazil 2008-2009. *PLoS Negl. Trop. Dis.* **8**, e2740 (2014).
16. GBD 2016 Diarrhoeal Disease Collaborators. Estimates of the global, regional, and national morbidity, mortality, and aetiologies of diarrhoea in 195 countries: a systematic analysis for the Global Burden of Disease Study 2016. *Lancet Infect. Dis.* **18**, 1211–1228 (2018).
17. Shearer, F. M. *et al.* Existing and potential infection risk zones of yellow fever worldwide: a modelling analysis. *Lancet Glob. Heal.* **6**, e270-278 (2018).
18. Bozio, C. H. *et al.* Outbreak of Neisseria meningitidis serogroup C outside the meningitis belt — Liberia, 2017: an epidemiological and laboratory investigation. *Lancet* **S1473-3099**, 30476–6 (2018).
19. Thompson, M. J. *et al.* Clinical recognition of meningococcal disease in children and adolescents. *Lancet* **367**, 397–403 (2006).
20. Campbell, H. *et al.* Presentation with gastrointestinal symptoms and high case fatality associated with group W meningococcal disease (MenW) in teenagers, England, July 2015 to January 2016. *Eurosurveillance* **21**, 30175 (2016).
21. Sadarangani, M. *et al.* Outcomes of invasive meningococcal disease in adults and children in Canada between 2002 and 2011: A prospective cohort study. *Clin. Infect. Dis.* **60**, e27-35 (2015).
22. Patra, S., Mukim, Y., Varma, M., Mukhopadhyay, C. & Kalwaje Eshwara, V. Invasive nontyphoidal Salmonella disease in southern India: a 5-year experience from a tertiary care hospital. *Turkish J. Med. Sci.* **48**, 1030–1035 (2018).
23. Gordon, M. A. *et al.* Non-typhoidal Salmonella (NTS) bacteraemia in Malawian adults: a severe, recrudescing, HIV-associated illness. *Malawi Med. J.* **15**, 47–51 (2003).
24. Phuong, T. L. T. *et al.* Non-typhoidal Salmonella serovars associated with invasive and non-invasive disease in the Lao People ' s Democratic Republic. *Trans. R. Soc. Trop. Med. Hyg.* **111**, 418–424 (2017).
25. Lan, N. P. H. *et al.* Invasive non-typhoidal Salmonella infections in Asia: Clinical observations, disease outcome and dominant serovars from an infectious disease hospital in Vietnam. *PLoS*

- Negl. Trop. Dis.* **10**, e0004857 (2016).
26. Yombi, J. C., Martins, L., Vandercam, B., Rodriguez-Villalobos, H. & Robert, A. Clinical features and outcome of typhoid fever and invasive non-typhoidal salmonellosis in a tertiary hospital in Belgium : analysis and review of the literature. *Acta Clin. Belg.* **70**, 265–271 (2015).
  27. Maheshwari, A., Ray, S. & Thuluvath, P. J. Acute hepatitis C. *Lancet* **372**, 321–332 (2008).
  28. Gerlach, J. T. *et al.* Acute hepatitis C: High rate of both spontaneous and treatment-induced viral clearance. *Gastroenterology* **125**, 80–88 (2003).
  29. McGovern, B. H. *et al.* Acute hepatitis C virus infection in incarcerated injection drug users. *Clin. Infect. Dis.* **42**, 1663–1670 (2006).
  30. Santantonio, T. *et al.* Risk factors and outcome among a large patient cohort with community-acquired acute hepatitis C in Italy. *Clin. Infect. Dis.* **43**, 1154–1159 (2006).
  31. Cox, A. L. *et al.* Prospective evaluation of community-acquired acute-phase hepatitis C virus infection. *Clin. Infect. Dis.* **40**, 951–958 (2005).
  32. Wiese, M. *et al.* Outcome in a hepatitis C (genotype 1b) single source outbreak in Germany — a 25-year multicenter study. *J. Hepatol.* **43**, 590–598 (2005).
  33. Hoofnagle, J. H. Course and outcome of hepatitis C. *Hepatology* **36**, S21–S29 (2002).
  34. Mattsson, L., Sonnerborg, A. & Weiland, O. Outcome of acute symptomatic non-A , non-B hepatitis: a 13-year follow-up study of hepatitis C virus markers. *Liver* **13**, 274–278 (1993).
  35. Chu, C. *et al.* Hepatitis C: Comparison of clinical, virologic and pathologic features in patients with acute hepatitis B and C. *J. Gastroenterol. Hepatol.* **16**, 209–214 (2001).
  36. Bhunia, R. *et al.* A typhoid fever outbreak in a slum of South Dumdum municipality, West Bengal, India, 2007: Evidence for foodborne and waterborne transmission. *BMC Public Health* **9**, 115 (2009).
  37. Lin, F. Y. C. *et al.* The epidemiology of typhoid fever in the Dong Thap province, Mekong delta region of Vietnam. *Am. J. Trop. Med. Hyg.* **62**, 644–648 (2000).
  38. Butler, T., Bell, W. R., Levin, J., Linh, N. N. & Arnold, K. Typhoid fever: Studies of blood coagulation, bacteremia, and endotoxemia. *Arch. Intern. Med.* **138**, 407–410 (1978).
  39. Lutterloh, E. *et al.* Multidrug-resistant typhoid fever with neurologic findings on the Malawi-Mozambique border. *Clin. Infect. Dis.* **54**, 1100–1106 (2012).
  40. Bradaric, N. *et al.* Two outbreaks of typhoid fever related to the war in Bosnia and Herzegovina. *Eur. J. Epidemiol.* **12**, 409–412 (1996).
  41. Mweu, E. & English, M. Typhoid fever in children in Africa. *Trop. Med. Int. Heal.* **13**, 532–540 (2008).
  42. Farooqui, A., Khan, A. & Kazmi, S. U. Investigation of a community outbreak of typhoid fever associated with drinking water. *BMC Public Health* **9**, 476 (2009).
  43. Bhutta, Z. A. Current concepts in the diagnosis and treatment of typhoid fever. *Br. Med. J.* **333**, 78–82 (2006).
  44. Olsen, S. J. *et al.* Restaurant-associated outbreak of Salmonella Typhi in Nauru: an epidemiological and cost analysis. *Epidemiol. Infect.* **127**, 405–412 (2001).
  45. Stuart, B. M. & Pullen, R. L. Typhoid: Clinical analysis of three hundred and sixty cases. *Arch. Intern. Med.* **78**, 629–661 (1946).
  46. Barrett, F. C., Knudsen, J. D. & Johansen, I. S. Cases of typhoid fever in Copenhagen region: a retrospective study of presentation and relapse. *BMC Res. Notes* **6**, 315 (2013).
  47. Tsega, E. *et al.* Outbreak of acute hepatitis E virus infection among military personnel in northern Ethiopia. *J. Med. Virol.* **34**, 232–236 (1991).
  48. Koshy, A. *et al.* Acute sporadic hepatitis E in Kuwait. *J. Med. Virol.* **408**, 405–408 (1994).
  49. Pavio, N. & Mansuy, J.-M. Hepatitis E in high-income countries. *Curr. Opin. Infect. Dis.* **23**, 521–527 (2010).
  50. Won, H., Ri, R., Soo, S., Lee, M. & Kim, S. Comparing the clinical features and outcomes of acute hepatitis E viral infections with those of acute hepatitis A, B, and C infections in Korea. *Intervirology* **60**, 109–117 (2017).

51. Aggarwal, R. Clinical presentation of hepatitis E. *Virus Res.* **161**, 15–22 (2011).
52. Goumba, A. I., Konamna, X. & Komas, N. P. Clinical and epidemiological aspects of a hepatitis E outbreak in Bangui, Central African Republic. *BMC Infect. Dis.* **11**, 93 (2011).
53. Bryan, J. P. *et al.* Epidemic of hepatitis E in a military unit in Abbottabad, Pakistan. *Am. J. Trop. Med. Hyg.* **67**, 662–668 (2002).
54. Ahmed, J. A. *et al.* Hepatitis E outbreak, Dadaab refugee camp, Kenya, 2012. *Emerg. Infect. Dis.* **19**, 1010–1012 (2013).
55. Puri, M. *et al.* Factors influencing occurrence of postpartum haemorrhage in pregnant women with hepatitis E infection and deranged coagulation profile. *Obstet. Med.* **4**, 108–112 (2011).
56. Yin, W. *et al.* Hepatitis E outbreak in a mechanical factory in Qingdao City, China. *Int. J. Infect. Dis.* **86**, 191–196 (2019).
57. Khaskheli, M., Baloch, S., Sheeba, A. & Baloch, S. Hepatitis E — A preventable health issue — endangering pregnant women’s life and foetal outcomes. *J. Pak. Med. Assoc.* **65**, 655–659 (2015).
58. Lovdahl, A. & Overbo, J. A patient between 20-30 years of age with jaundice and pain in joints and muscles. *Tidsskr Nor Lægeforen* **136**, 1651–1653 (2016).
59. Wang, C. *et al.* Differences in clinical and laboratory characteristics and disease severity between children and adults with dengue virus infection in Taiwan, 2002. *Trans. R. Soc. Trop. Med. Hyg.* **103**, 871–877 (2009).
60. Khan, N. A. *et al.* Clinical profile and outcome of hospitalized patients during first outbreak of dengue in Makkah, Saudi Arabia. *Acta Trop.* **105**, 39–44 (2008).
61. Zhang, H. *et al.* Predictive symptoms and signs of severe dengue disease for patients with dengue fever: A meta-analysis. *Biomed Res. Int.* (2014).
62. Itha, S. *et al.* Profile of liver involvement in dengue virus infection. *Natl. Med. J. India* **18**, 127–130 (2005).
63. Nunes-Araujo, F. R. F., Ferreira, M. S. & Nishioka, S. D. A. Dengue fever in Brazilian adults and children: assessment of clinical findings and their validity for diagnosis. *Ann. Trop. Med. Parasitol.* **97**, 415–419 (2003).
64. Cobra, C., Rigau-Perez, J. G., Kuno, G. & Vorndam, V. Symptoms of dengue fever in relation to host immunologic response and virus serotype, Puerto Rico, 1990-1991. *Am. J. Epidemiol.* **142**, 1204–1211 (1995).
65. Hanafusa, S. *et al.* Clinical features and differences between child and adult dengue infections in Rayong province, southeast Thailand. *Southeast Asian J. Trop. Med. Public Health* **39**, 252–259 (2008).
66. Badawi, A. *et al.* Prevalence of chronic comorbidities in dengue fever and West Nile virus: A systematic review and meta-analysis. 1–27 (2018).
67. Makiala-Mandanda, S. *et al.* Identification of dengue and chikungunya cases among suspected cases of yellow fever. *Vector-Borne Zoonotic Dis.* **18**, 364–370 (2018).
68. Ho, Y. *et al.* Severe yellow fever in Brazil: clinical characteristics and. *J. Travel Med.* 1–7 (2019). doi:10.1093/jtm/taz040
69. Gordon, A. *et al.* The Nicaraguan pediatric dengue cohort study: Incidence of inapparent and symptomatic dengue virus. *PLoS Negl. Trop. Dis.* **7**, e2462 (2013).
70. Guo, C. *et al.* Global Epidemiology of Dengue Outbreaks in 1990 – 2015: A Systematic Review and. **7**, 1–11 (2017).
71. Wasay, M. *et al.* Encephalitis and myelitis associated with dengue viral infection Clinical and neuroimaging features. **110**, 635–640 (2008).
72. Bhatt, S. *et al.* The global distribution and burden of dengue. *Nature* **496**, 504–507 (2013).
73. Brooks, B. R. Viral hepatitis type B presenting with seizure. *J. Am. Med. Assoc.* **237**, 472–473 (1977).
74. Chen, X., Fu, C., Liu, J., Shan, L. & Liu, C. Recent epidemiological and clinical features of acute hepatitis B in a single center of China. *Int. J. Clin. Exp. Med.* **8**, 16652–16657 (2015).
75. Tassopoulos, N. C. *et al.* Natural history of acute hepatitis B surface antigen-positive hepatitis in



- Greek adults. *Gastroenterology* **92**, 1844–1850 (1987).
76. McMahon, B. J. *et al.* Acute hepatitis B virus infection: Relation of age to the clinical expression of disease and subsequent development of the carrier state. *J. Infect. Dis.* **151**, 599–603 (1985).
  77. Trépo, C., Chan, H. L. Y. & Lok, A. Hepatitis B virus infection. *Lancet* **384**, 2053–2063 (2014).
  78. Koff, R. S. Clinical manifestations and diagnosis of hepatitis A virus infection. *Vaccine* **10**, S15–S17 (1992).
  79. Lednar, W. M. *et al.* Frequency of illness associated with epidemic hepatitis A virus infections in adults. *Am. J. Epidemiol.* **122**, 226–233 (1985).
  80. Cuthbert, J. A. Hepatitis A: Old and new. *Clin. Microbiol. Rev.* **14**, 38–58 (2001).
  81. Tong, M. J., El-Farra, N. S. & Grew, M. I. Clinical manifestations of hepatitis A: Recent experience in a community teaching hospital. *J. Infect. Dis.* **171**, S15–S18 (1995).
  82. Dahanayaka, N. J. *et al.* Clinical features and transmission pattern of hepatitis A: An experience from a hepatitis A outbreak caused by two cocirculating genotypes in Sri Lanka. *Am. J. Tro* **95**, 908–914 (2016).
  83. Khandaker, G. *et al.* Systematic review of clinical and epidemiological features of the pandemic influenza A (H1N1) 2009. *Influenza Other Respi. Viruses* **5**, 148–156 (2011).
  84. Pavia, A. T. Viral infections of the lower respiratory tract: Old viruses, new viruses, and the role of diagnosis. *Clin. Vaccine Immunol.* **52**, S284–S289 (2011).
  85. Dowell, S. F. *et al.* Respiratory syncytial virus is an important cause of community-acquired lower respiratory infection among hospitalized adults. *J. Infect. Dis.* **174**, 456–462 (1996).
  86. Seppa, Y., Bloigu, A., Honkanen, P. E., Miettinen, L. & Syrjala, H. Severity assessment of lower respiratory tract infection in elderly patients in primary care. *Arch. Intern. Med.* **161**, 2709–2713 (2001).
  87. Martino, R. *et al.* Prospective study of the incidence, clinical features, and outcome of symptomatic upper and lower respiratory tract infections by respiratory viruses in adult recipients of hematopoietic stem cell transplants for hematologic malignancies. *Biol. Blood Marrow Transplant.* **11**, 781–796 (2005).
  88. Lodha, R. *et al.* Can clinical symptoms or signs accurately predict hypoxemia in children with acute lower respiratory tract infections? *Indian Pediatr.* **41**, 129–135 (2004).
  89. Murtagh, P. *et al.* Acute lower respiratory infection in Argentinian children: A 40 month clinical and epidemiological study. *Pediatr. Pulmonol.* **16**, 1–8 (1993).
  90. Macfarlane, J. *et al.* Prospective study of the incidence, aetiology and outcome of adult lower respiratory tract illness in the community. *Thorax* **56**, 109–114 (2001).
  91. He, D. *et al.* Epidemiological and clinical features of Plasmodium falciparum malaria in United Nations personnel in Western Bahr el Ghazal state, South Sudan. *PLoS One* **8**, e55220 (2013).
  92. Amexo, M., Tolhurst, R., Barnish, G. & Bates, I. Malaria misdiagnosis: effects on the poor and vulnerable. *Lancet* **364**, 1896–1898 (2004).
  93. Narváez, P. E. C. *et al.* Clinical and epidemiological aspects of complicated malaria in Colombia , 2007 – 2013. *Malar. J.* 1–11 (2016). doi:10.1186/s12936-016-1323-5
  94. Church, L. W. P. *et al.* Clinical manifestations of Plasmodium falciparum malaria experimentally induced by mosquito challenge. *J. Infect. Dis.* **175**, 915–920 (1997).
  95. Battle, K. E. *et al.* Mapping the global endemicity and clinical burden of Plasmodium vivax, 2000 – 17: a spatial and temporal modelling study. *Lancet* **394**, 332–343 (2019).
  96. Weiss, D. J. *et al.* Mapping the global prevalence, incidence, and mortality of Plasmodium falciparum, 2000 – 17: a spatial and temporal modelling study. *Lancet* **394**, 322–331 (2019).
  97. Idro, R., Marsh, K., John, C. C. & Newton, C. R. J. Cerebral malaria; Mechanisms of brain injury and strategies for improved neuro-cognitive outcome. *Pediatr. Res.* **68**, 267–274 (2010).
  98. Idro, R., Jenkins, N. E. & Newton, C. R. J. C. Pathogenesis, clinical features, and neurological outcome of cerebral malaria. *Lancet Neurol.* **4**, 827–840 (2005).
  99. Jenssen, G. R. *et al.* Clinical features , therapeutic interventions and long-term aspects of hemolytic-uremic syndrome in Norwegian children : a nationwide retrospective study from 1999 –

2008. *BMC Infect. Dis.* 1–10 (2016). doi:10.1186/s12879-016-1627-7
100. Kotloff, K. L. *et al.* Burden and aetiology of diarrhoeal disease in infants and young children in developing countries (the Global Enteric Multicenter Study, GEMS): A prospective, case-control study. *Lancet* **382**, 209–222 (2013).
  101. Tickell, K. D. *et al.* Articles Identification and management of Shigella infection in children with diarrhoea : a systematic review and meta-analysis. *Lancet Glob. Heal.* **5**, e1235–e1248 (2017).
  102. Reiner, R. C. *et al.* Variation in childhood diarrheal morbidity and mortality in Africa, 2000–2015. *N. Engl. J. Med.* **379**, 1128–1138 (2018).
  103. Kotloff, K. L. The burden and etiology of diarrheal illness in developing countries. *Pediatr. Clin. North Am.* **64**, 799–814 (2017).
  104. Törnblom, H., Holmvall, P., Svenungsson, B. & Lindberg, G. Gastrointestinal symptoms after infectious diarrhea: A five-year follow-up in a Swedish cohort of adults. *Clin. Gastroenterol. Hepatol.* **5**, 461–464 (2007).
  105. West, J. V. Acute upper airway infections. *Br. Med. Bull.* **61**, 215–230 (2002).
  106. Manoha, C., Espinosa, S., Aho, S.-L., Huet, F. & Pothier, P. Epidemiological and clinical features of hMPV, RSV and RVs infections in young children. *J. Clin. Virol.* **38**, 221–226 (2007).
  107. Barrett, B. *et al.* The Wisconsin Upper Respiratory Symptom Survey is responsive, reliable, and valid. *J. Clin. Epidemiol.* **58**, 609–617 (2005).
  108. Stover, C. S. & Litwin, C. M. The epidemiology of upper respiratory infections at a tertiary care center: Prevalence, seasonality, and clinical symptoms. *J. Respir. Med.* 469393 (2014).
  109. Fisher, R. G. *et al.* Twenty years of outpatient respiratory syncytial virus infection: A framework for vaccine efficacy trials. *Pediatrics* **99**, (1997).
  110. Kratz, T. *et al.* Ebola virus disease outbreak in Isiro, Democratic Republic of the Congo, 2012: Signs and symptoms, management and outcomes. *PLoS One* **10**, e0129333 (2015).
  111. Lado, M. *et al.* Clinical features of patients isolated for suspected Ebola virus disease at Connaught Hospital, Freetown, Sierra Leone: a retrospective cohort study. *Lancet Infect. Dis.* **S1473-3099**, 00137–1 (2015).
  112. Jacob, S. T. *et al.* Ebola virus disease. *Nat. Rev. Dis. Prim.* **6**, (2020).
  113. Lu, H. *et al.* Ebola virus outbreak investigation, Sierra Leone, September 28–November 11, 2014. *Emerg. Infect. Dis.* **21**, 1921–1927 (2015).
  114. Bwaka, M. A. *et al.* Ebola hemorrhagic fever in Kikwit, Democratic Republic of the Congo: Clinical observations in 103 patients. *J. Infect. Dis.* **179**, (1999).
  115. Mupere, E., Kaducu, O. F. & Yoti, Z. Ebola haemorrhagic fever among hospitalised children and adolescents in northern Uganda: Epidemiologic and clinical observations. *Afr. Health Sci.* **1**, 60–65 (2001).
  116. Bah, E. I. *et al.* Clinical presentation of patients with Ebola virus disease in Conakry, Guinea. *N. Engl. J. Med.* **372**, 40–47 (2014).
  117. Schieffelin, J. S. *et al.* Clinical Illness and Outcomes in Patients with Ebola in Sierra Leone. *N. Engl. J. Med.* **371**, 2092–2100 (2014).
  118. Moole, H. *et al.* Association of clinical signs and symptoms of Ebola viral disease with case fatality: a systematic review and meta-analysis. *J. Community Hosp. Intern. Med. Perspect.* **5**, 28406 (2015).
  119. Waxman, M., Aluisio, A. R., Rege, S. & Levine, A. C. Characteristics and survival of patients with Ebola virus infection , malaria , or both in Sierra Leone : a retrospective cohort study. *Lancet Infect. Dis.* **17**, 654–660 (2017).
  120. *Marburg Virus Disease.* (Springer-Verlag Berlin Heidelberg, 1971). doi:10.1007/978-3-662-01593-3
  121. Hranac, C. R., Marshall, J. C., Monadjem, A. & Hayman, D. T. S. Predicting Ebola virus disease risk and the role of African bat birthing. *Epidemics* **29**, 100366 (2019).
  122. Centers for Disease Control and Prevention. Outbreaks chronology: Ebola virus disease known cases and outbreaks of Ebola virus disease, in reverse chronological order. **29**, 1–9 (2014).

123. Knust, B. *et al.* Multidistrict outbreak of Marburg virus disease — Uganda, 2012. *J. Infect. Dis.* **212**, S119–S128 (2017).
124. Colebunders, R. *et al.* Marburg hemorrhagic fever in Durba and Watsa, Democratic Republic of the Congo: Clinical documentation, features of illness, and treatment. *J. Infect. Dis.* **196**, S148–S153 (2007).
125. Amman, B. R. *et al.* Seasonal pulses of Marburg virus circulation in juvenile *Rousettus aegyptiacus* bats coincide with periods of increased risk of human infection. *PLoS Pathog.* **8**, e1002877 (2012).
126. World Health Organization. A large outbreak of epidemic louse-borne typhus in Burundi. *Wkly. Epidemiol. Rec.* **21**, 152–153 (1997).
127. *Infectious Diseases.* (Elsevier, 2017). doi:10.1016/B978-0-7020-6285-8.00274-4
128. Raoult, D. *et al.* Outbreak of epidemic typhus associated with trench fever in Burundi. *Lancet* **352**, 353–358 (1998).
129. *Principles and Practice of Pediatric Infectious Diseases.* (Elsevier, 2018). doi:10.1016/B978-0-323-40181-4.00298-X
130. Schmutzhard, E. & Helbok, R. Rickettsiae, protozoa, and opisthokonta/metazoa. in *Handbook of Clinical Neurology* (eds. Biller, J. & Ferro, J. M.) **121**, 1403–1443 (Elsevier B.V., 2014).
131. Sezi, C. L., Nnochiri, E., Nsanzumuhire, E. & Buttner, D. A small outbreak of louse typhus in Masaka District, Uganda. *Trans. R. Soc. Trop. Med. Hyg.* **66**, 783–788 (1972).
132. Perine, P. L. *et al.* A clinico-epidemiological study of epidemic typhus in Africa. *Clin. Infect. Dis.* **14**, 1149–1158 (1991).
133. Ajayi, N. A. *et al.* Containing a Lassa fever epidemic in a resource-limited setting: outbreak description and lessons learned from Abakaliki, Nigeria (January–March 2012). *Int. J. Infect. Dis.* **17**, e1011–e1016 (2013).
134. Frame, J. D. Clinical features of Lassa fever in Liberia. *Rev. Infect. Dis.* **11**, S783–S789 (1989).
135. Maigari, I. M., Jibrin, Y. B., Umar, M. S., Lawal, S. M. & Gandi, A. Y. Descriptive features of Lassa fever in Bauchi, Northeastern Nigeria - a retrospective review. *Res. J. Heal. Sci.* **6**, 149–156 (2018).
136. McCormick, J. B. *et al.* A case-control study of the clinical diagnosis and course of Lassa Fever. *J. Infect. Dis.* **155**, 445–455 (1987).
137. Okokhere, P. *et al.* Clinical and laboratory predictors of Lassa fever outcome in a dedicated treatment facility in Nigeria: a retrospective, observational cohort study. *Lancet Infect. Dis.* **S1473-3099**, 30121–X (2018).
138. Gibb, R., Moses, L. M., Redding, D. W. & Jones, K. E. Understanding the cryptic nature of Lassa fever in West Africa. *Pathog. Glob. Health* **111**, 276–288 (2017).
139. Allan, K. J. *et al.* Epidemiology of Leptospirosis in Africa: A systematic review of a neglected zoonosis and a paradigm for ‘One Health’ in Africa. *PLoS Negl. Trop. Dis.* **9**, e0003899 (2015).
140. Peric, L. *et al.* Human leptospirosis in eastern Croatia, 1969–2003: Epidemiological, clinical, and serological features. *Scandinavian J. Infect. Dis.* **37**, 738–741 (2005).
141. Madani, T. A. *et al.* Rift Valley fever epidemic in Saudi Arabia: Epidemiological, clinical, and laboratory characteristics. *Clin. Infect. Dis.* **37**, 1084–1092 (2003).
142. Nguku, P. M. *et al.* An Investigation of a Major Outbreak of Rift Valley Fever in Kenya : 2006 – 2007. *Am. J. Trop. Med. Hyg.* **83**, 5–13 (2010).
143. Prevention), (Centers for Disease Control and. Rift Valley fever (RVF) outbreak summaries. (2017). Available at: <https://www.cdc.gov/vhf/rvf/outbreaks/summaries.html>. (Accessed: 28th February 2020)
144. Mohamed, M. *et al.* Epidemiologic and clinical aspects of a Rift Valley fever outbreak in humans in Tanzania, 2007. *Am. J. Trop. Med. Hyg.* **83**, 22–27 (2010).
145. Lagare, A. *et al.* First occurrence of Rift Valley fever outbreak in Niger, 2016. *Vet. Med. Sci.* **5**, 70–78 (2019).
146. Nanyingi, M. O. *et al.* A systematic review of Rift Valley Fever epidemiology 1931–2014. *Infect.*

- Ecol. Epidemiol.* **5**, 28024 (2015).
147. Boushab, B. M. *et al.* Severe human illness caused by Rift Valley fever virus in Mauritania, 2015. *Open Forum Infect. Dis.* 5–8 (2016). doi:10.1093/ofid/ofw200
  148. Cevik, M. A. *et al.* Clinical and laboratory features of Crimean-Congo hemorrhagic fever: predictors of fatality. *Int. J. Infect. Dis.* **12**, 374–379 (2008).
  149. Swanepoel, R. *et al.* The clinical pathology of Crimean-Congo hemorrhagic fever. *Rev. Infect. Dis.* **11**, S794–S800 (1989).
  150. Duran, A. *et al.* Evaluation of patients with Crimean-Congo hemorrhagic fever in Bolu, Turkey. *Afr. Health Sci.* **13**, 233–242 (2013).
  151. Bente, D. A. *et al.* Crimean-Congo hemorrhagic fever: History, epidemiology, pathogenesis, clinical syndrome and genetic diversity. *Antiviral Res.* **100**, 159–189 (2013).
  152. Maaten, L. Van Der & Hinton, G. Visualizing Data using t-SNE. *J. Mach. Learn. Res.* **9**, 2579–2605 (2008).
  153. Bogich, T. L. *et al.* Using network theory to identify the causes of disease outbreaks of unknown origin. *J. R. Soc. Interface* **10**, 20120904 (2013).
  154. Carlson, C. J. embarcadero: species distribution modelling with Bayesian additive regression trees in R. *Methods Ecol. Evol.* (2020). doi:10.1111/2041-210X.13389
  155. Evaluation), (Institute for Health Metrics and. Africa under-5 diarrhea incidence, prevalence, and mortality geospatial estimates 2000-2015. (2018).