

# Spatio-temporal propagation of COVID-19 pandemic - supplementary information

Bnaya Gross,<sup>1</sup> Zhiguo Zheng,<sup>2</sup> Shiyao Liu,<sup>2</sup> Xiaoqi Chen,<sup>2</sup>  
Alon Sela,<sup>3,1</sup> Jianxin Li,<sup>4,5</sup> Daqing Li,<sup>6,2</sup> and Shlomo Havlin<sup>1</sup>

<sup>1</sup>Department of Physics, Bar-Ilan University, Ramat-Gan 52900, Israel

<sup>2</sup>School of Reliability and Systems Engineering, Beihang University, Beijing 100191, China

<sup>3</sup>Department of Industrial Engineering, Ariel University, Ariel, Israel

<sup>4</sup>Beijing Advanced Innovation Center for Big Data and Brain Computing, Beihang University, Beijing 100083, China

<sup>5</sup>State Key Laboratory of Software Development Environment, Beihang University, Beijing 100083, China

<sup>6</sup>Beijing Advanced Innovation Center for Big Data-Based Precision Medicine, Beihang University, Beijing 100191, China

(Dated: March 23, 2020)

## I. LATENCY PERIOD AFFECT ON THE INFECTION RATE

The latency period at which infected individual can infect other people but do not show illness signs should be taken into account when one evaluating the infection rate of the disease and can be calculated using Eq. 9 in the main text. Due to the latency period  $l$ , a newly detected infected individual was in fact infected a few days ago. We measured the infection rate for different cities in China and find that  $l$  do not effect the general behaviour of  $P(t)$  but slightly changes  $\tau$  and  $P_0$  as show in Fig. S1. A summary of the values of  $P_0$  and  $\tau$  for different  $l$  can be found in Table S1.

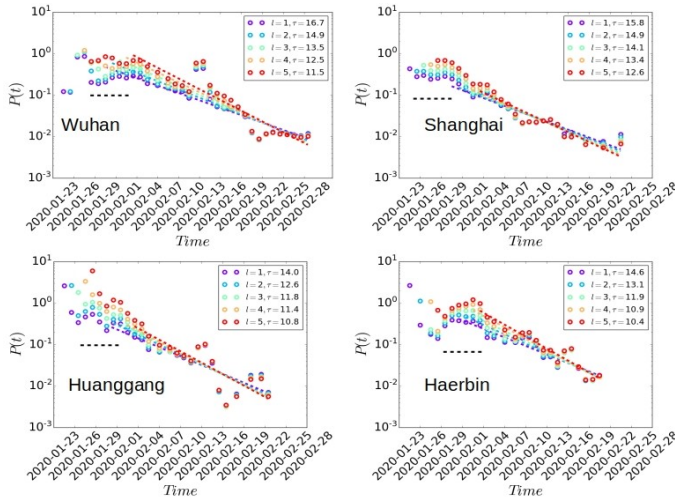


FIG. S1: The effect of the latency period on the infection rate. Different latency period changes slightly  $\tau$  and  $P_0$  but not the general behaviour.

$l$	$P_0$	$\tau$
1	$0.74 \pm 0.55$	$20 \pm 9.7$
2	$0.82 \pm 0.69$	$20.9 \pm 14.7$
3	$0.94 \pm 0.68$	$20 \pm 15.2$
4	$1.16 \pm 0.84$	$15.9 \pm 7.7$
5	$1.2 \pm 0.81$	$15.4 \pm 8.1$

TABLE S1: Temporal scaling exponents for different latency period. It can be seen that as  $l$  increase  $P_0$  increases and  $\tau$  decreases.

## II. QUARANTINES STARTING TIME - $t_x$

Each city in China experience two-stages process of the disease with constant infection rate at early times and exponential decay at later times when quarantines starts. The time when quarantines starts,  $t_x$ , can be evaluated by calculating the error of each stage.  $t_x$  is when the total error is minimal as show in Fig. S2.

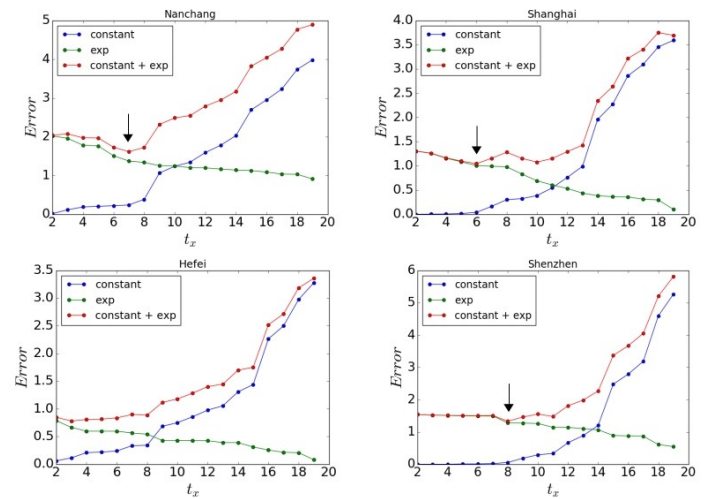


FIG. S2: Evaluation of  $t_x$ . The error of the constant stage and the decaying stage is calculated.  $t_x$  is found when the minimal error.