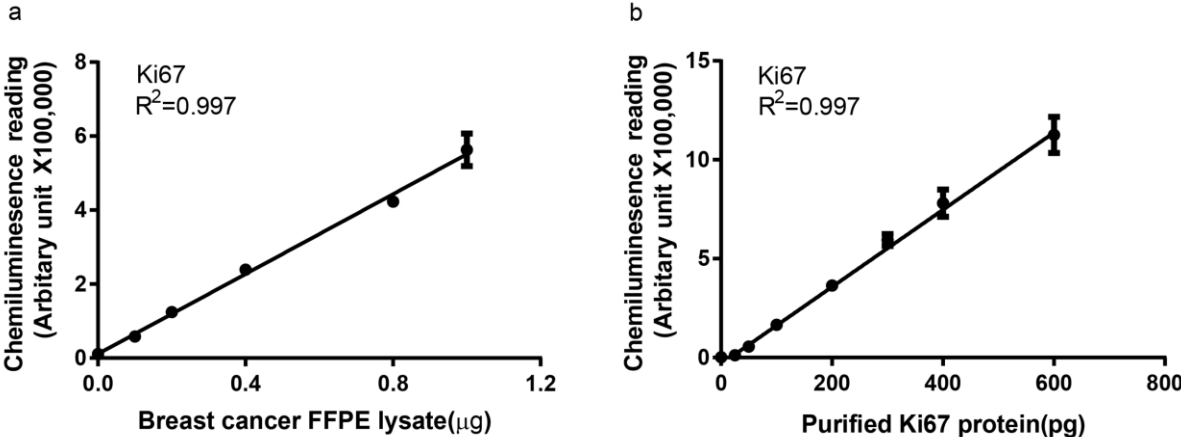


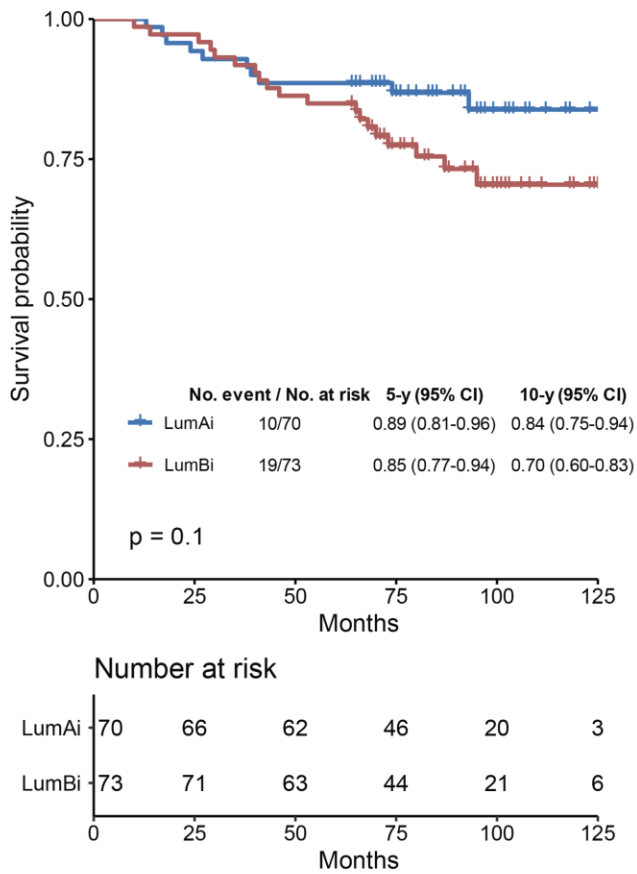
Supplemental material

Supplement to: Improving prognosis of surrogate assay for breast cancer patients by absolute quantitation of Ki67 protein levels using Quantitative Dot Blot (QDB) method

Supplemental figures



Supplemental Fig. 1: Defining the linear range of QDB measurement with Ki67 (clone MIB1).



Supplemental Fig. 2: Kaplan-Meier curves for overall survival according to breast cancer subtypes assigned by surrogate assay in Luminal-like subtypes. The cutoff of Ki67 score was 20%. The 5 year and 10 year survival probabilities, and the p values from Log Rank test were provided for both Surrogate assay and Adjusted Surrogate assay respectively. LumA_i and LumB_i, Luminal A-like and B-like subtypes by surrogate assay; CI, confidence interval.

Supplemental tables

Supplemental Table 1. Characteristics of 12 specimens lost to follow up

Characteristics	Number of Cases (%)
Age	
<50	6(50)
≥50	6(50)
Treatment	
Chemo	5(41.67)
Endo&Chemo	5(41.67)
Unknown	2(16.67)
Node Status	
N0	10(83.33)
N2	1(8.33)
N3	1(8.33)
Tumor Size	
T1	4(33.33)
T2	8(66.67)
Grade	
II	6(50)
III	5(41.67)
Unknown	1(8.33)
Surrogate Assay (14% Ki67 cutoff)	
LumA _i	5(41.67)
LumB _i	7(57.33)
LumB _{1i}	5(41.67)
LumB _{2i}	2(16.67)
Surrogate Assay (20% Ki67 cutoff)	
LumA _i	6(50)
LumB _i	6(50)
LumB _{1i}	4(33.33)
LumB _{2i}	2(16.67)
Adjusted Surrogate Assay	
LumA _q	7(58.33)
LumB _q	5(41.67)
Group	
A _i A _q	4(33.33)
A _i B _q	1(8.33)
B _i A _q	3(25)
B _i B _q	4(33.33)