

SUPPLEMENTARY MATERIAL

Cell culture

Human primary lung fibroblasts from normal patients (NHLF, CC-2612; passage 2-4) were purchased from Lonza (Slough, UK) and cultured in 8-chamber Millicell EZ slides (Millipore, Hertfordshire, UK) or 96-well plates (Corning Costar, Buckinghamshire, UK) in Lonza custom fibroblast growth medium (FGM-2) containing basal medium (FBM) (CC-3131). Experiments were conducted between passage 2 and 4.

For measurements of intracellular free ionized calcium concentration ($[Ca^{2+}]_i$), NHLF were maintained in experimental medium (FGM-2 medium with 0.1% serum and no antibiotics). For all other experiments, the experimental conditions were: (1) 0.01% DMSO (vehicle control); (2) 1 μ M NPS2143; (3) 5 ng/mL TGF β 1; (4) 1 μ M NPS2143 (4 hours pre-treatment) and 5 ng/mL TGF β 1. Treatments were carried out for 72 hours.

Mouse studies

Assessment of pulmonary remodeling in 15 old mice with targeted CaSR ablation from SM22 α ⁺ cells

Cre-negative (WT) and $SM22\alpha^{Casr\Delta flox/\Delta flox}$ (KO) animals were generated by breeding LoxP CaSR mice with SM22 α -Cre recombinase mice as described previously¹. The left lung from 15 month old animals was formalin-fixed, paraffin-embedded and 5 μ m sections were Masson's trichrome stained according to the manufacturer's instructions (Polyscience Inc., Northampton, UK). Slides were scanned using an Olympus BX41 microscope (Olympus UK & Ireland, Essex, UK) equipped with QImaging QICAM Fast 1394 color digital camera and an OASIS motorized XYZ stage (Objective imaging Ltd., Cambridge, UK). Histopathological scoring to assess the extent of lung fibrosis was performed using the Ashcroft scale² done independently by two experimenters blinded to the genotype. An even-numbered grade was given in cases where difficulty arose in choosing between any 2 odd-numbered categories. The amount of collagen deposited was quantified using the software StrataQuest® and

expressed as a percentage of lung section surface area, 10 μm from the small airway epithelium. Collagen associated with the vasculature was manually identified and excluded.

Metabolomic statistics

Metabolomic data were log-transformed with MetaboAnalyst 4.0 using R and Bioconductor packages. Further statistical analyses were carried out as described previously³. Briefly, principal component analysis (PCA) was used to distinguish the difference in metabolomic profiles between the two sample groups (control or PF); multiple comparisons were carried out using ANOVA (with Bonferroni *post hoc* analysis) which identified significant metabolite changes between groups. Analysis of targeted metabolites and pathway identification were carried out using Kyoto Encyclopedia of Genes and Genomes (KEGG). Univariate analyses used 2-tailed Student's t-test to identify significant m/z, where p-values < 0.05 were considered significant.

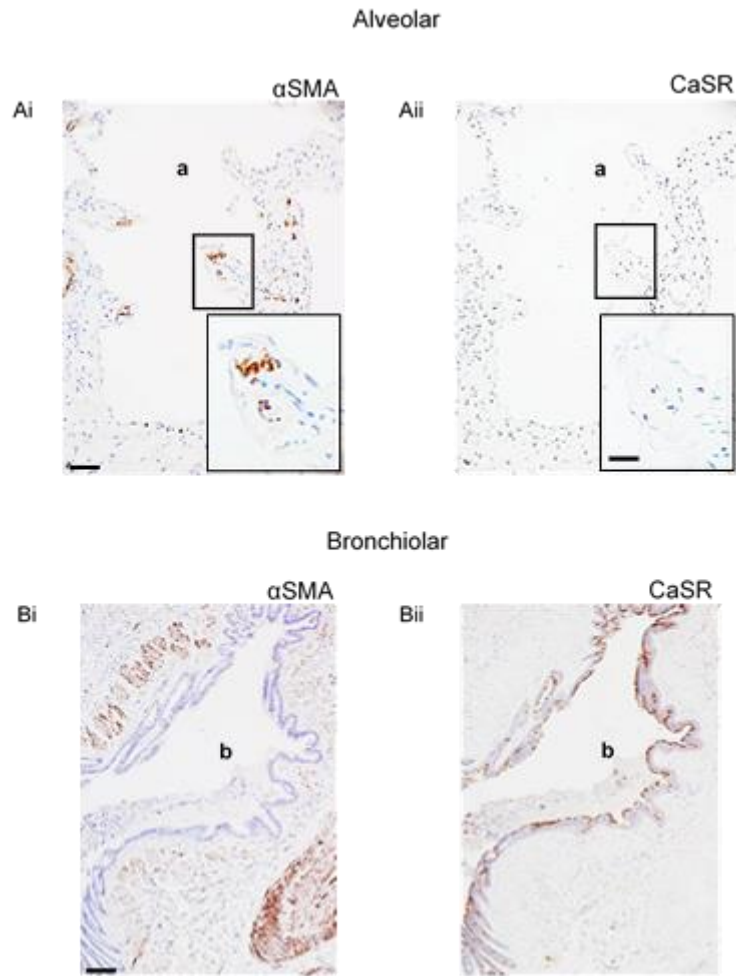


Figure S1. Immunostaining of the CaSR and α SMA in IPF lungs. A-D: consecutive paraffin sections of IPF lungs. **A:** Alveolar area of an IPF-lung; Some interstitial cells show α SMA immunostaining (**Ai**) but are negative for CaSR expression (**Aii**). **(Bi)** In peripheral bronchioles, smooth muscle bundles surrounding airways and blood vessels show α SMA immunostaining. **(Bii)** Bronchiolar epithelial cells appear to express CaSR with very limited overlap with α SMA. $N = 7$ IPF donors; 5 control donors. Scale bars: 50 μ m (**1A**); 25 μ m (**inserts**); 150 μ m (**1B**). *a: lumen of alveoli; b: lumen of bronchiole.*

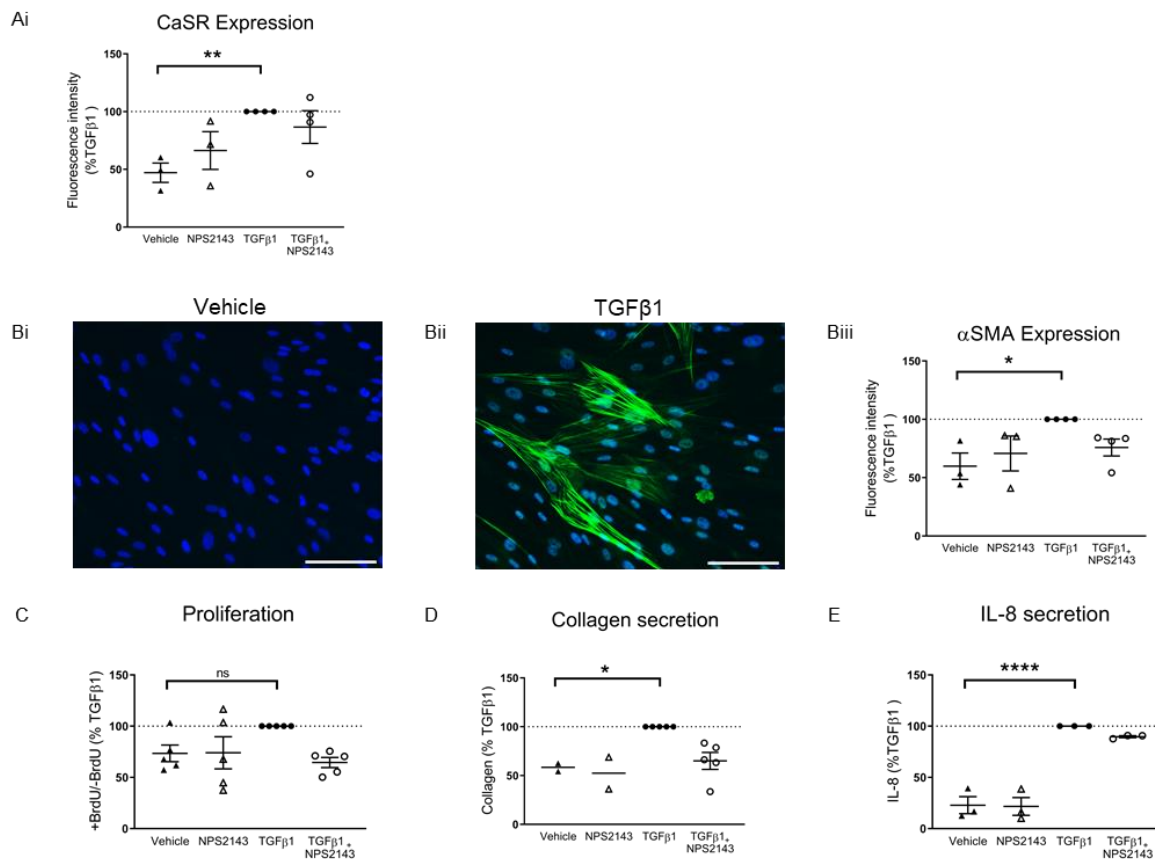


Figure S2. The calcilytic, NPS2143 selectively reduces pro-fibrotic changes induced by TGFβ1 in normal human lung fibroblasts (NHLF) while the drug is completely ineffective in the absence of the fibrotic stimulus. (Ai) NHLF treated with TGFβ1 show significantly greater CaSR expression compared to control (vehicle). **(Bi)** Representative images showing NHLF express relatively lower baseline alpha smooth muscle actin (αSMA) expression (green). **(Bii, iii)** Treatment with TGFβ1 results in increases αSMA expression and stress-fiber formation. TGFβ1 induces NHLF proliferation **(C)**, collagen secretion **(D)** and IL-8 secretion **(E)**. Data are normalized to TGFβ1 (which was set at 100%, dashed line) and expressed as mean ± SEM. Statistical comparisons: ANOVA with Bonferroni *post hoc* test; * $p < 0.05$; ** $p < 0.01$; **** $p < 0.0001$ **(A, Biii, C-E)**. $N = 2-4$ donors; $n = 2-5$ independent experiments. Scale bars: 100 μm.