

Family-based genome-wide association study of leprosy in Vietnam

Chaima Gzara, Monica Dallmann-Sauer, Marianna Orlova, Nguyen Van Thuc, Vu Hong Thai,

Vinicius M. Fava, Marie-Thérèse Bihoreau, Anne Boland, Laurent Abel, Alexandre Alcaïs*,

Erwin Schurr*, Aurélie Cobat*

Supplementary material

Includes 11 supplementary tables and 2 supplementary figures

Table S1. Clinical characteristics of study populations from the Vietnamese family-based and case-control studies

Characteristics	Primary cohort[#]	Replication cohort	
	Affected offspring	Cases	Controls
<i>N</i>	622	1181	668
<i>N</i> affected by status (MB/PB/NA)	202/327/93	584/536/61	–
Age in years*: mean (SD, range)	18.6 (7.8, 13-23)	23.0 (8.0, 17-29)	37.9 (12.1, 28-48)
% Males	69.3	66.4	44.3

* Age at diagnosis for leprosy cases and at enrollment for controls

the 622 affected offspring of the primary family-based cohort belonged to 481 families including 379 trios (one affected child and the two parents), 80 multiplex families with at least two affected children and both parents, nine multiplex families with at least two affected children and one parent, five multiplex families with at least two affected children, one parent and at least one unaffected child, one multiplex families with four affected children and more than two unaffected children but no parents, six families composed of one affected child, one parent and at least one unaffected child and one three-generational family composed of four affected and four unaffected children.

Table S2. LD-based clumping of genome-wide suggestive non-HLA hits

CHR	Lead SNP	Clumped SNPs	SNP genotyped in replication	Discovery GWAS			Replication		
				MAF	OR* [95% CI]	P	MAF	OR** [95% CI]	P#
4	rs72679464	NONE	rs72679464	0.058	0.36 [-0.09-0.81]	9.02x10 ⁻⁰⁶	<i>Failed call rate < 95%</i>		
5	rs329308	rs329311, rs329316	rs329308	0.16	1.59 [1.34-1.84]	6.22x10 ⁻⁰⁶	0.16	1.00]0 - 1.16]	0.48
9	rs72745332	rs138270577, rs72745331, rs7873495, rs7846860, rs72745334, rs139715851	rs72745332	0.097	0.46 [0.17-0.75]	1.37x10 ⁻⁰⁶	<i>Failed call rate < 95%</i>		
10	rs10749270	rs12245921	rs12245921	0.35	0.68 [0.49-0.86]	8.61x10 ⁻⁰⁶	0.36	-	>0.5
11	rs10898992	NONE	rs10898992	0.105	0.52 [0.23-0.8]	9.88x10 ⁻⁰⁶	0.11	-	>0.5
14	rs572428555	rs61982614, rs34179372	rs34179372	0.083	2.24 [1.87-2.61]	4.92x10 ⁻⁰⁷	0.07	1.13 [0.91 - Inf[0.175
21	rs7281793	rs9981205, rs7280840	rs7281793	0.461	0.66 [0.48-0.84]	3.69x10 ⁻⁰⁶	0.46	0.98]0 - 1.10]	0.376
21	rs75025892	rs4817512	rs75025892	0.271	0.64 [0.44-0.83]	2.68x10 ⁻⁰⁶	0.26	0.98]0 - 1.11]	0.387

OR = odds ratio; CI = confidence interval

^s positions are given according to the hg19 genome build

* with respect to the minor allele

one-tailed test

Table S3. Previously published genome-wide significant SNPs outside the HLA region

				Original study				Vietnamese discovery GWAS		
SNP	CHR	Position	Gene mapped	m/M	Risk Allele	<i>P</i>	ref	Risk Allele	Information	<i>P</i>
rs3762318	1	67597119	<i>IL23R</i>	G/A	A	3.27x10⁻¹¹	(1)	A	1	4.41x10⁻⁰³
rs76418789	1	67648596	<i>IL23R</i>	A/G	A	1.03x10 ⁻¹⁰	(2)	A	0.557	4.60x10 ⁻⁰¹
rs2735591	1	85744472	<i>BCL10</i>	G/A	A	1.03x10 ⁻⁰⁹	(3)	G	1	0.87
rs146466242	1	152275298	<i>FLG</i>	A/T	A	3.39x10 ⁻¹²	(2)	T	0.933	6.51x10 ⁻⁰¹
rs2221593	1	212873431	<i>BATF3</i>	T/C	T	3.09x10⁻⁰⁸	(4)	T	1	1.94x10⁻⁰⁴
rs2058660	2	103054449	<i>IL18RAP/IL18R1</i>	A/G	A	4.57x10⁻¹⁹	(5)	A	0.999	5.66x10⁻⁰³
rs6807915	3	12313846	<i>SYN2</i>	C/T	T	1.94x10 ⁻⁰⁸	(6)	C	0.984	3.71x10 ⁻⁰¹
rs145562243 [£]	3	48719549	<i>NCKIPSD</i>	T/C	T	1.71x10 ⁻⁰⁹	(2)	-	-	-
rs5743618	4	38798648	<i>TLR1</i>	C/A	A	1.70x10 ⁻⁰⁹	(7)	C	0.67	9.85x10 ⁻⁰¹
rs73058713	5	20374213	intergenic	A/C	A	9.54x10 ⁻⁰⁹	(4)	C	0.984	2.14x10 ⁻⁰¹
rs6871626[#]	5	158826792	<i>IL12B</i>	A/C	C	3.95x10⁻¹⁸	(5)	C	0.778	5.12x10⁻⁰⁴
rs2275606	6	146918950	<i>RAB32</i>	A/G	A	3.94x10 ⁻¹⁴	(1)	A	1	1.99x10 ⁻⁰¹
rs4720118	7	33469241	<i>BBS9</i>	T/C	T	3.85x10 ⁻¹⁰	(6)	T	0.998	1.85x10 ⁻⁰¹
rs55894533	8	11749242	<i>CTSB</i>	C/A	C	5.07x10 ⁻¹¹	(6)	A	0.964	3.53x10 ⁻⁰¹
rs13259978	8	17396415	<i>SLC7A2</i>	C/G	C	1.74x10 ⁻⁰⁸	(8)	G	0.907	8.96x10 ⁻⁰¹
rs160451	8	90662941	<i>RIPK2</i>	T/C	C	7.45x10 ⁻¹²	(4)	C	0.999	8.33x10 ⁻⁰¹
rs42490	8	90778513	<i>RIPK2</i>	G/A	G	1.38x10 ⁻¹⁶	(9)	G	1	3.15x10 ⁻⁰²
rs10100465	8	118626279	<i>Mx10D30</i>	A/G	G	2.85x10 ⁻¹¹	(6)	G	1	1.39x10 ⁻⁰¹
rs6478108	9	117558703	<i>TNFSF15</i>	G/A	A	3.39x10 ⁻²¹	(9)	C	1	3.88x10 ⁻⁰²
rs10817758	9	118143933	<i>DECI</i>	T/C	T	1.15x10 ⁻⁰⁸	(4)	T	1	3.54x10 ⁻⁰¹
rs149308743	9	139258965	<i>CARD9</i>	T/C	T	2.09x10 ⁻⁰⁸	(2)	T	0.514	9.79x10 ⁻⁰¹
rs58600253	10	64507904	intergenic	T/C	T	3.02x10 ⁻¹²	(4)	T	0.987	3.17x10 ⁻⁰¹
rs780668	10	73111408	<i>SLC29A3</i>	T/C	T	2.17x10 ⁻⁰⁹	(2)	T	1	4.46x10 ⁻⁰²

rs663743	11	64107735	<i>CCDC88B</i>	A/G	A	8.84x10 ⁻¹⁴	(4)	A	0.985	2.14x10 ⁻⁰²
rs925368	12	110390979	<i>GIT2</i>	C/T	C	9.18x10 ⁻¹⁷	(8)	C	0.877	7.80x10 ⁻⁰¹
rs671	12	112241766	<i>ALDH2</i>	A/G	A	2.00x10 ⁻²⁰	(8)	A	1	2.33x10 ⁻⁰¹
rs3764147	13	44457925	<i>LACCI</i>	A/G	G	3.72x10⁻⁵⁴	(9)	G	1	6.56x10⁻⁰⁵
rs8002861	13	44474517	<i>LACCI</i>	G/A	A	1.07x10 ⁻¹²	(4)	A	1	5.70x10 ⁻⁰²
rs142179458	14	62203623	<i>HIF1A</i>	G/A	A	4.95x10 ⁻⁰⁹	(10)	A	0.687	1.52x10 ⁻⁰¹
rs77061563	16	11452542	<i>LOC388210</i>	T/C	C	6.23x10 ⁻¹⁵	(4)	T	0.904	7.08x10 ⁻⁰¹
rs9302752	16	50719103	<i>NOD2</i>	A/G	G	3.77x10 ⁻⁴⁰	(9)	C	1	9.83x10 ⁻⁰²
rs16948876	16	50854418	<i>CYLD</i>	A/G	A	1.64x10 ⁻¹⁰	(1)	A	0.777	2.17x10 ⁻⁰¹
rs75680863	22	31007023	<i>TCN2</i>	T/A	A	8.37x10 ⁻²¹	(8)	T	0.804	2.54x10 ⁻⁰¹

£ rs145562243 is not part of the 1000 Genomes project (Phase 1 and 3)

imputed using the 1000 Genomes Phase 1 reference panel.

Bold typeface indicates SNPs replicated in the GWAS discovery sample

Table S4. SNPs in high linkage disequilibrium ($r^2>0.8$) with rs3764147 in the 1000 Genomes KHV population

SNP Id	Position [§]	Alleles	MAF	Distance	Dprime	R ²	Correlated Alleles	RegulomeDB	Function	GWAS <i>P</i>	GWAS Type	GWAS Information
rs3764147	chr13:44457925	(A/G)	0.3586	0	1	1	A=A,G=G	1f	missense	6.56x10 ⁻⁰⁵	genotyped	1
rs1932990	chr13:44460242	(C/T)	0.3586	2317	1	1	A=C,G=T	6	NA	6.56x10 ⁻⁰⁵	imputed	1
rs9567307	chr13:44471877	(A/G)	0.3586	13952	1	1	A=A,G=G	6	NA	6.57x10 ⁻⁰⁵	imputed	0.999
rs2121034	chr13:44473866	(G/T)	0.3586	15941	1	1	A=G,G=T	7	NA	6.59x10 ⁻⁰⁵	imputed	0.998
rs2121033	chr13:44475052	(C/G)	0.3586	17127	0.978	0.9566	A=C,G=G	6	NA	0.000113101	imputed	0.998
rs1373904	chr13:44475398	(A/G)	0.3586	17473	0.978	0.9566	A=A,G=G	5	NA	0.000114411	imputed	0.998
rs7995004	chr13:44478820	(C/T)	0.3586	20895	0.978	0.9566	A=C,G=T	7	NA	0.000114902	imputed	0.999
rs9316058	chr13:44485076	(G/C)	0.3636	27151	0.9779	0.9355	A=G,G=C	6	NA	0.000137552	imputed	0.983
rs61960013	chr13:44490181	(C/G)	0.3687	32256	0.9777	0.915	A=C,G=G	5	NA	0.00240748	imputed	0.961
rs6561151	chr13:44484706	(G/A)	0.3586	26781	0.9561	0.9141	A=G,G=A	5	NA	0.00025133	imputed	0.991

[§] positions are given according to the hg19 reference build

Table S5. Association statistics of genome-wide suggestive HLA SNPs in the discovery cohort and the replication cohort

SNP	Position ^s	m/M	MAF	info	Discovery				Replication			
					RA	nfam	<i>P</i>	MAF	info	RA	<i>P</i> ^{##}	OR ^{##} [95% CI]
rs1265048	31081409	C/T	0.462	1	T	310	8.72049x10 ⁻⁰⁶	0.468884	0.942	T	1.58285x10 ⁻⁰⁶	0.721]0 - 0.81]
rs707913	31084787	G/A	0.252	0.997	A	298	3.11437x10 ⁻⁰⁶	0.269246	0.985	A	0.0162387	0.851]0 - 0.96]
rs1265045	31085340	A/G	0.252	0.997	G	299	3.17807x10 ⁻⁰⁶	0.267198	0.979	G	0.01828185	0.853]0 - 0.97]
rs28383830	31088950	TGG/T	0.301	0.995	T	331	3.80686x10 ⁻⁰⁶	0.318851	0.967	T	0.0194322	0.86]0 - 0.97]
rs3094208	31090672	G/A	0.426	0.999	A	320	1.07251x10 ⁻⁰⁶	0.443509	0.997	A	0.02495445	0.874]0 - 0.98]
rs3130998	31090945	T/C	0.431	0.999	C	321	1.13543x10 ⁻⁰⁶	0.447631	0.992	C	0.02938365	0.878]0 - 0.98]
rs3132542	31091163	A/G	0.431	0.999	G	318	1.14391x10 ⁻⁰⁶	0.447556	0.993	G	0.02978155	0.878]0 - 0.98]
rs3095310	31091447	T/C	0.431	0.999	C	318	1.16338x10 ⁻⁰⁶	0.44754	0.993	C	0.03009215	0.879]0 - 0.98]
rs3095309	31091475	T/C	0.476	0.999	T	324	8.16477x10 ⁻⁰⁹	0.444361	0.977	T	9.46x10 ⁻⁰⁵	1.297 [1.16 - Inf[
rs3094206	31091642	G/C	0.416	0.999	C	324	2.11699x10 ⁻⁰⁶	0.437176	0.993	C	0.00424399	0.835]0 - 0.93]
rs3094205	31091862	G/A	0.395	1	A	318	3.91571x10 ⁻⁰⁷	0.415089	1	A	0.0289926	0.877]0 - 0.98]
rs3094204	31091992	A/G	0.391	1	A	324	1.38138x10 ⁻⁰⁷	0.376639	0.983	A	0.000178394	1.29 [1.15 - Inf[
rs3094199	31093326	A/G	0.184	0.998	A	221	5.19623x10 ⁻⁰⁷	0.171306	0.998	A	2.29996x10 ⁻⁰⁵	1.475 [1.26 - Inf[
rs3094197	31093485	A/G	0.184	0.998	A	221	5.252x10 ⁻⁰⁷	0.171714	1	A	2.37825x10 ⁻⁰⁵	1.473 [1.26 - Inf[
rs3094196	31093947	G/A	0.269	0.997	A	305	4.94733x10 ⁻⁰⁸	0.304487	0.974	A	4.70x10 ⁻⁰⁴	0.789]0 - 0.89]
rs3131005	31095864	G/A	0.18	0.997	G	221	1.39111x10 ⁻⁰⁶	0.169985	0.994	G	1.84629x10 ⁻⁰⁵	1.481 [1.26 - Inf[
rs2844634	31096184	C/G	0.269	0.998	G	307	1.73449x10 ⁻⁰⁸	0.302326	1	G	4.65x10 ⁻⁰⁴	0.793]0 - 0.89]
rs2844633	31096189	T/C	0.269	0.998	C	307	1.73308x10 ⁻⁰⁸	0.302055	1	C	4.20x10 ⁻⁰⁴	0.791]0 - 0.89]
rs10947140	31102143	A/G	0.364	0.991	G	337	7.46156x10 ⁻⁰⁶	0.37956	0.938	G	0.000196483	0.778]0 - 0.87]
rs3132557	31106409	G/A	0.384	0.989	A	319	6.16345x10 ⁻⁰⁶	0.377354	0.937	A	0.000297875	0.784]0 - 0.88]
rs114240643	31108628	G/A	0.117	0.994	G	147	9.02682x10 ⁻⁰⁶	0.113536	0.972	G	8.44205x10 ⁻¹⁰	2.042 [1.66 - Inf[
rs1265082	31111606	A/G	0.236	0.997	G	274	7.19662x10 ⁻⁰⁷	0.243239	0.96	G	0.000474965	0.773]0 - 0.88]
rs1265113	31117577	G/C	0.237	0.998	C	274	8.35912x10 ⁻⁰⁷	0.24291	0.962	C	0.000486452	0.773]0 - 0.88]
rs1265110	31119422	T/C	0.237	0.999	C	274	9.12075x10 ⁻⁰⁷	0.242722	0.963	C	0.000494401	0.774]0 - 0.88]
rs1265107	31121529	T/G	0.237	0.999	G	274	9.33801x10 ⁻⁰⁷	0.242684	0.963	G	0.000496658	0.774]0 - 0.88]

SNP	Position [§]	m/M	MAF	info	Discovery				Replication			
					RA	nfam	<i>P</i>	MAF	info	RA	<i>P</i> ^{**}	OR ^{**} [95% CI]
rs1265163	31134087	G/C	0.237	0.998	C	273	1.78593x10 ⁻⁰⁶	0.242372	0.966	C	0.00050538	0.774]0 - 0.88]
rs3094194	31136240	G/A	0.46	1	G	314	1.42614x10 ⁻⁰⁸	0.444076	0.989	G	5.03x10 ⁻⁰⁶	1.359 [1.21 - Inf[
rs9281239	31137715	CCAGA/C	0.275	0.997	C	302	8.95487x10 ⁻⁰⁷	0.279159	0.969	C	0.00090405	0.793]0 - 0.9]
rs1265160	31138371	A/G	0.244	0.989	G	328	1.94129x10 ⁻⁰⁶	0.254178	0.951	G	0.000305988	0.767]0 - 0.87]
rs9461650	31143241	A/G	0.298	1	A	271	9.52788x10 ⁻⁰⁷	0.28186	0.954	A	3.60472x10 ⁻⁰⁷	1.479 [1.3 - Inf[
rs3734869	31143639	A/G	0.134	1	A	159	8.86805x10 ⁻⁰⁶	0.136638	0.956	A	7.63355x10 ⁻⁰⁹	1.852 [1.54 - Inf[
rs56178408	31150039	T/C	0.121	0.999	T	150	9.42962x10 ⁻⁰⁶	0.123997	0.973	T	4.71539x10 ⁻¹⁰	2.015 [1.66 - Inf[
rs138693838	31150159	CTG/C	0.134	0.999	CTG	160	9.02978x10 ⁻⁰⁶	0.136464	0.956	CTG	7.26615x10 ⁻⁰⁹	1.855 [1.54 - Inf[
rs4713440	31150323	A/C	0.121	0.999	A	150	9.39967x10 ⁻⁰⁶	0.12465	0.969	A	4.67131x10 ⁻¹⁰	2.015 [1.66 - Inf[
rs9468884	31151319	C/T	0.121	0.999	C	150	9.45919x10 ⁻⁰⁶	0.124037	0.972	C	4.68199x10 ⁻¹⁰	2.016 [1.66 - Inf[
rs9468885	31151413	C/A	0.134	0.999	C	160	9.06342x10 ⁻⁰⁶	0.136441	0.956	C	7.15915x10 ⁻⁰⁹	1.855 [1.54 - Inf[
rs9468886	31151573	A/G	0.121	0.999	A	150	9.45767x10 ⁻⁰⁶	0.124042	0.972	A	4.75245x10 ⁻¹⁰	2.015 [1.65 - Inf[
rs6913894	31151997	A/G	0.121	0.999	A	150	9.41752x10 ⁻⁰⁶	0.122963	0.972	A	9.85525x10 ⁻¹⁰	1.996 [1.64 - Inf[
rs6913631	31152098	C/A	0.121	0.999	C	150	9.47041x10 ⁻⁰⁶	0.124082	0.973	C	4.76474x10 ⁻¹⁰	2.015 [1.65 - Inf[
rs56332747	31152321	A/G	0.121	0.999	A	150	9.47286x10 ⁻⁰⁶	0.124044	0.972	A	4.75571x10 ⁻¹⁰	2.015 [1.65 - Inf[
rs9501351	31153126	T/C	0.121	0.999	T	150	9.49217x10 ⁻⁰⁶	0.124042	0.972	T	4.75975x10 ⁻¹⁰	2.015 [1.65 - Inf[
rs9501506	31153573	C/T	0.121	0.999	C	150	9.49869x10 ⁻⁰⁶	0.124041	0.972	C	4.76662x10 ⁻¹⁰	2.015 [1.65 - Inf[
rs9501507	31153716	C/T	0.121	0.999	C	150	9.49891x10 ⁻⁰⁶	0.124079	0.973	C	4.7744x10 ⁻¹⁰	2.015 [1.65 - Inf[
rs115737821	31154138	G/C	0.121	0.999	G	150	9.5077x10 ⁻⁰⁶	0.123598	0.972	G	7.067x10 ⁻¹⁰	2.001 [1.64 - Inf[
rs17191040	31154206	G/T	0.121	0.999	G	150	9.5077x10 ⁻⁰⁶	0.123598	0.972	G	7.067x10 ⁻¹⁰	2.001 [1.64 - Inf[
rs17197402	31154384	A/G	0.121	0.999	A	150	9.51401x10 ⁻⁰⁶	0.123598	0.972	A	7.07455x10 ⁻¹⁰	2.001 [1.64 - Inf[
rs199987285	31154473	CTTG/C	0.121	0.999	CTTG	150	9.51424x10 ⁻⁰⁶	0.123598	0.972	CTTG	7.0731x10 ⁻¹⁰	2.001 [1.64 - Inf[
rs149432671	31156350	C/A	0.121	0.999	C	150	9.43943x10 ⁻⁰⁶	0.122507	0.972	C	1.46689x10 ⁻⁰⁹	1.982 [1.63 - Inf[
rs9500884	31165733	T/C	0.12	0.998	T	154	9.4223x10 ⁻⁰⁶	0.114105	0.977	T	1.92309x10 ⁻⁰⁹	2.005 [1.64 - Inf[
rs9501079	31175097	A/G	0.123	1	A	154	8.68744x10 ⁻⁰⁶	0.12375	0.984	A	5.21245x10 ⁻¹¹	2.093 [1.72 - Inf[
rs9501082	31175251	T/C	0.123	1	T	154	8.68744x10 ⁻⁰⁶	0.12375	0.984	T	5.2169x10 ⁻¹¹	2.093 [1.72 - Inf[
rs4516988	31176602	G/A	0.123	0.999	G	155	9.3182x10 ⁻⁰⁶	0.123715	0.984	G	5.21045x10 ⁻¹¹	2.093 [1.72 - Inf[
rs9501513	31176678	G/A	0.123	0.999	G	154	9.48551x10 ⁻⁰⁶	0.123717	0.984	G	5.2056x10 ⁻¹¹	2.093 [1.72 - Inf[

SNP	Position ^s	m/M	MAF	info	Discovery			Replication				
					RA	nfam	P	MAF	info	RA	P**	OR** [95% CI]
rs3130513	31178084	G/C	0.364	0.998	C	330	2.30119x10 ⁻⁰⁶	0.385403	0.962	C	0.072923	0.901]0 - 1.01]
rs145021772	31189460	T/C	0.157	1	T	189	8.92082x10 ⁻⁰⁶	0.151984	0.992	T	2.91541x10 ⁻⁰⁵	1.493 [1.26 - Inf[
rs201234764	31190027	G/GC	0.157	1	G	189	8.91635x10 ⁻⁰⁶	0.151987	0.992	G	2.92239x10 ⁻⁰⁵	1.493 [1.26 - Inf[
rs113565451	31190175	T/C	0.157	1	T	189	8.91635x10 ⁻⁰⁶	0.151985	0.992	T	2.92303x10 ⁻⁰⁵	1.493 [1.26 - Inf[
rs35391481	31190736	A/C	0.157	1	A	198	8.77935x10 ⁻⁰⁶	0.152039	0.992	A	2.94642x10 ⁻⁰⁵	1.492 [1.26 - Inf[
rs12662501	31190850	T/C	0.157	1	T	187	8.98763x10 ⁻⁰⁶	0.151986	0.992	T	2.92634x10 ⁻⁰⁵	1.493 [1.26 - Inf[
rs12662527	31190897	A/G	0.157	1	A	188	8.91189x10 ⁻⁰⁶	0.15244	0.989	A	3.10144x10 ⁻⁰⁵	1.491 [1.26 - Inf[
rs35891864	31191099	A/G	0.157	1	A	188	8.91189x10 ⁻⁰⁶	0.151987	0.992	A	2.93037x10 ⁻⁰⁵	1.492 [1.26 - Inf[
rs141822551	31191249	A/AC	0.148	0.968	A	201	3.75455x10 ⁻⁰⁶	0.138323	0.972	A	1.49189x10 ⁻⁰⁷	1.725 [1.44 - Inf[
rs139975409	31191259	A/C	0.148	0.968	A	201	3.75455x10 ⁻⁰⁶	0.138323	0.972	A	1.49227x10 ⁻⁰⁷	1.725 [1.44 - Inf[
rs113831989	31191294	T/C	0.148	0.968	T	201	3.75455x10 ⁻⁰⁶	0.138323	0.972	T	1.49234x10 ⁻⁰⁷	1.725 [1.44 - Inf[
rs112056872	31192675	T/A	0.157	1	T	206	8.9523x10 ⁻⁰⁶	0.152397	0.992	T	3.01669x10 ⁻⁰⁵	1.491 [1.26 - Inf[
rs2394887	31194711	T/G	0.157	1	T	188	8.87668x10 ⁻⁰⁶	0.15226	0.993	T	2.9419x10 ⁻⁰⁵	1.492 [1.26 - Inf[
rs112815193	31196390	A/G	0.157	1	A	189	8.80734x10 ⁻⁰⁶	0.152571	0.993	A	2.81927x10 ⁻⁰⁵	1.493 [1.26 - Inf[
rs56210254	31196640	G/A	0.157	1	G	188	8.86354x10 ⁻⁰⁶	0.152454	0.994	G	2.80283x10 ⁻⁰⁵	1.493 [1.26 - Inf[
rs12664433	31200672	A/G	0.172	0.996	A	205	9.68689x10 ⁻⁰⁷	0.164657	0.994	A	1.61681x10 ⁻⁰⁶	1.568 [1.33 - Inf[
rs112758902	31201534	T/C	0.17	1	T	198	8.82611x10 ⁻⁰⁷	0.164638	0.995	T	1.62742x10 ⁻⁰⁶	1.567 [1.33 - Inf[
rs55783607	31202764	C/T	0.17	1	C	198	8.80925x10 ⁻⁰⁷	0.164638	0.995	C	1.65595x10 ⁻⁰⁶	1.567 [1.33 - Inf[
rs72863879	31203352	A/G	0.17	1	A	198	8.80204x10 ⁻⁰⁷	0.164644	0.995	A	1.6662x10 ⁻⁰⁶	1.567 [1.33 - Inf[
rs113288104	31204402	T/G	0.17	1	T	198	8.78767x10 ⁻⁰⁷	0.164652	0.995	T	1.68731x10 ⁻⁰⁶	1.566 [1.33 - Inf[
rs377461698	31205030	C/A	0.17	1	C	198	8.7781x10 ⁻⁰⁷	0.164658	0.995	C	1.70092x10 ⁻⁰⁶	1.566 [1.33 - Inf[
rs371249684	31205031	C/A	0.17	1	C	198	8.7781x10 ⁻⁰⁷	0.164658	0.995	C	1.70092x10 ⁻⁰⁶	1.566 [1.33 - Inf[
rs3869118	31206136	C/G	0.17	1	C	198	8.76142x10 ⁻⁰⁷	0.164671	0.995	C	1.73001x10 ⁻⁰⁶	1.565 [1.33 - Inf[
rs113390008	31207351	A/G	0.17	1	A	197	8.79774x10 ⁻⁰⁷	0.164792	0.995	A	1.70099x10 ⁻⁰⁶	1.566 [1.33 - Inf[
rs111411820	31207589	A/C	0.171	1	A	196	1.10717x10 ⁻⁰⁶	0.166734	0.995	A	4.47998x10 ⁻⁰⁶	1.531 [1.3 - Inf[
rs12665166	31208242	T/C	0.171	1	T	196	1.10717x10 ⁻⁰⁶	0.166777	0.995	T	4.56799x10 ⁻⁰⁶	1.53 [1.3 - Inf[
rs35593555	31208289	C/CATG	0.351	1	CATG	308	1.13294x10 ⁻⁰⁶	0.376349	0.994	CATG	0.04523695	0.888]0 - 1]
rs3095250	31208340	T/C	0.394	1	C	314	7.17926x10 ⁻⁰⁸	0.412424	0.991	C	3.13x10 ⁻⁰²	0.879]0 - 0.99]

SNP	Position [§]	m/M	Discovery				Replication					
			MAF	info	RA	nfam	P	MAF	info	RA	P**	OR** [95% CI]
rs3130534	31209045	A/G	0.351	1	G	308	1.13294x10 ⁻⁰⁶	0.376372	0.994	G	0.04525615	0.888]0 - 1]
rs112030670	31209380	A/G	0.169	1	A	197	8.92517x10 ⁻⁰⁷	0.164788	0.996	A	1.76596x10 ⁻⁰⁶	1.564 [1.33 - Inf[
rs114475699	31211201	C/T	0.169	1	C	197	8.99479x10 ⁻⁰⁷	0.164842	0.996	C	1.71991x10 ⁻⁰⁶	1.565 [1.33 - Inf[
rs4332019	31213413	G/T	0.171	1	G	199	1.10093x10 ⁻⁰⁶	0.166998	0.995	G	4.6198x10 ⁻⁰⁶	1.529 [1.3 - Inf[
rs2394897	31213502	A/G	0.171	1	A	197	1.10776x10 ⁻⁰⁶	0.166952	0.996	A	4.58201x10 ⁻⁰⁶	1.53 [1.3 - Inf[
rs2394898	31213583	C/T	0.377	0.911	T	395	1.84941x10 ⁻⁰⁶	0.377365	0.924	T	0.00396969	0.829]0 - 0.93]
rs79997604	31213587	T/C	0.377	0.911	C	395	1.85077x10 ⁻⁰⁶	0.377365	0.924	C	0.00396964	0.829]0 - 0.93]
rs3899471	31215037	C/T	0.171	1	C	198	1.10836x10 ⁻⁰⁶	0.166989	0.996	C	4.59355x10 ⁻⁰⁶	1.529 [1.3 - Inf[
rs12662550	31215732	G/A	0.171	1	G	198	1.10866x10 ⁻⁰⁶	0.167012	0.996	G	4.59927x10 ⁻⁰⁶	1.529 [1.3 - Inf[
rs12665531	31215916	A/G	0.171	0.999	A	201	1.00621x10 ⁻⁰⁶	0.167492	0.994	A	3.7092x10 ⁻⁰⁶	1.536 [1.31 - Inf[
rs2394904	31216105	A/G	0.171	1	A	198	1.10866x10 ⁻⁰⁶	0.167025	0.996	A	4.6026x10 ⁻⁰⁶	1.529 [1.3 - Inf[
rs2394907	31217943	T/C	0.348	1	C	309	8.43286x10 ⁻⁰⁷	0.370554	0.997	C	0.0370317	0.882]0 - 0.99]
rs55651925	31218131	C/G	0.169	0.999	C	199	9.16257x10 ⁻⁰⁷	0.164949	0.996	C	1.63857x10 ⁻⁰⁶	1.566 [1.33 - Inf[
rs4084262	31218889	T/C	0.169	0.999	T	205	9.23004x10 ⁻⁰⁷	0.165075	0.996	T	1.62957x10 ⁻⁰⁶	1.566 [1.33 - Inf[
rs3130434	31219803	C/G	0.379	0.982	G	332	1.70931x10 ⁻⁰⁷	0.382905	0.995	G	0.0326289	0.882]0 - 0.99]
rs3130435	31219805	A/G	0.373	0.981	G	334	1.12853x10 ⁻⁰⁷	0.382028	0.996	G	0.0250199	0.875]0 - 0.98]
rs3130540	31219862	C/T	0.373	0.982	T	333	1.14159x10 ⁻⁰⁷	0.382299	0.997	T	0.0246597	0.875]0 - 0.98]
rs9264179	31219869	C/T	0.379	0.982	T	332	1.69298x10 ⁻⁰⁷	0.383698	0.996	T	0.0275646	0.878]0 - 0.98]
rs9264180	31219902	A/C	0.377	0.981	C	335	1.67864x10 ⁻⁰⁷	0.3894	1	C	0.0303032	0.881]0 - 0.98]
rs9264181	31219922	T/C	0.311	0.977	C	334	6.92365x10 ⁻⁰⁶	0.317469	1	C	0.01907375	0.866]0 - 0.97]
rs9264183	31219934	G/A	0.311	0.977	A	334	6.92657x10 ⁻⁰⁶	0.317469	1	A	0.01907375	0.866]0 - 0.97]
rs56375204	31219935	C/G	0.175	0.984	C	232	1.94489x10 ⁻⁰⁶	0.171714	1	C	9.0263x10 ⁻⁰⁶	1.485 [1.27 - Inf[
rs55685143	31219936	T/G	0.175	0.984	T	232	1.94489x10 ⁻⁰⁶	0.171444	1	T	1.00655x10 ⁻⁰⁵	1.483 [1.27 - Inf[
rs9264184	31219945	A/G	0.311	0.977	G	334	6.92495x10 ⁻⁰⁶	0.317469	1	G	0.01907375	0.866]0 - 0.97]
rs55839536	31219958	A/G	0.173	0.984	A	232	1.62703x10 ⁻⁰⁶	0.169551	1	A	3.35542x10 ⁻⁰⁶	1.519 [1.3 - Inf[
rs9264186	31220017	A/G	0.374	0.982	G	337	1.18063x10 ⁻⁰⁷	0.38314	0.998	G	0.0250835	0.876]0 - 0.98]
rs9264187	31220027	C/T	0.379	0.982	T	335	1.77849x10 ⁻⁰⁷	0.384213	0.997	T	0.0307139	0.881]0 - 0.98]
rs9264188	31220109	T/C	0.373	0.981	C	335	1.14434x10 ⁻⁰⁷	0.382047	0.997	C	0.0236131	0.874]0 - 0.98]

SNP	Position ^{\$}	m/M	MAF	info	Discovery					Replication		
					RA	nfam	<i>P</i>	MAF	info	RA	<i>P</i> **	OR** [95% CI]
rs3095257	31220318	T/G	0.375	0.981	G	354	1.04746x10 ⁻⁰⁷	0.384173	0.997	G	0.0168978	0.866]0 - 0.97]
rs2394945	31220971	G/C	0.353	0.984	G	327	4.19088x10 ⁻⁰⁸	0.348447	0.971	G	9.20x10 ⁻⁰⁷	1.416 [1.25 - Inf[
rs2524084	31241639	G/A	0.369	0.999	A	317	3.32959x10 ⁻⁰⁶	0.385343	1	A	0.00050099	0.795]0 - 0.89]
rs12662096	31242445	C/T	0.131	0.998	C	166	3.52123x10 ⁻⁰⁶	0.125198	0.998	C	8.505x10 ⁻¹¹	2.058 [1.69 - Inf[
rs2524075	31243859	T/C	0.194	0.999	C	239	9.63573x10 ⁻⁰⁶	0.208626	0.994	C	0.0054809	0.808]0 - 0.93]
rs9468913	31244332	T/C	0.132	1	T	165	3.6746x10 ⁻⁰⁶	0.125633	0.999	T	3.0757x10 ⁻¹¹	2.095 [1.72 - Inf[
rs72855954	31246969	G/A	0.159	0.996	G	200	6.16496x10 ⁻⁰⁶	0.153597	1	G	1.10058x10 ⁻⁰⁶	1.608 [1.36 - Inf[
rs2853946	31247203	T/A	0.33	0.998	T	305	1.10848x10 ⁻⁰⁷	0.321525	1	T	5.0475x10 ⁻⁰⁶	1.392 [1.23 - Inf[
rs28457789	31247801	G/T	0.132	0.999	G	165	3.76142x10 ⁻⁰⁶	0.125461	0.998	G	2.38057x10 ⁻¹¹	2.106 [1.73 - Inf[
rs28709322	31247804	A/G	0.132	0.999	A	165	3.76227x10 ⁻⁰⁶	0.125459	0.998	A	2.3711x10 ⁻¹¹	2.107 [1.73 - Inf[
rs17192281	31248075	A/G	0.133	0.998	A	167	4.26831x10 ⁻⁰⁶	0.128141	0.994	A	4.16853x10 ⁻¹⁰	1.983 [1.64 - Inf[
rs17192288	31248091	A/G	0.131	0.999	A	166	3.79097x10 ⁻⁰⁶	0.125431	0.998	A	2.31154x10 ⁻¹¹	2.108 [1.73 - Inf[
rs17192295	31248114	T/C	0.131	0.999	T	166	3.79358x10 ⁻⁰⁶	0.125429	0.998	T	2.30558x10 ⁻¹¹	2.108 [1.73 - Inf[
rs17192302	31248256	T/C	0.131	0.999	T	166	3.80848x10 ⁻⁰⁶	0.125413	0.998	T	2.27169x10 ⁻¹¹	2.109 [1.73 - Inf[
rs17192323	31248324	T/C	0.131	0.999	T	166	3.81642x10 ⁻⁰⁶	0.125405	0.998	T	2.25474x10 ⁻¹¹	2.109 [1.73 - Inf[
rs17198664	31248382	T/C	0.133	0.998	T	167	4.33799x10 ⁻⁰⁶	0.12811	0.994	T	4.00321x10 ⁻¹⁰	1.985 [1.64 - Inf[
rs2844606	31248432	A/G	0.472	0.996	G	339	6.73388x10 ⁻⁰⁶	0.485447	0.994	G	0.000870425	0.806]0 - 0.9]
rs2844605	31248591	A/C	0.473	0.996	C	339	6.76544x10 ⁻⁰⁶	0.485469	0.994	C	0.000863865	0.805]0 - 0.9]
rs17198706	31248693	G/C	0.131	0.999	G	166	3.86318x10 ⁻⁰⁶	0.125358	0.998	G	2.15749x10 ⁻¹¹	2.111 [1.74 - Inf[
rs58114162	31248825	T/C	0.131	0.999	T	166	3.88432x10 ⁻⁰⁶	0.125337	0.998	T	2.11841x10 ⁻¹¹	2.112 [1.74 - Inf[
rs73728770	31248887	C/G	0.131	0.999	C	166	3.89267x10 ⁻⁰⁶	0.125328	0.998	C	2.1005x10 ⁻¹¹	2.112 [1.74 - Inf[
rs189616187	31248995	T/C	0.131	0.999	T	166	3.91138x10 ⁻⁰⁶	0.125309	0.998	T	2.06818x10 ⁻¹¹	2.113 [1.74 - Inf[
rs2253489	31249195	G/C	0.131	0.999	G	166	3.94824x10 ⁻⁰⁶	0.125276	0.998	G	2.00547x10 ⁻¹¹	2.114 [1.74 - Inf[
rs73392854	31249326	G/A	0.131	0.999	G	167	3.95785x10 ⁻⁰⁶	0.125982	0.996	G	1.45965x10 ⁻¹¹	2.126 [1.75 - Inf[
rs141206831	31249358	A/AAAG	0.131	0.997	A	169	4.35254x10 ⁻⁰⁶	0.125577	0.995	A	1.64104x10 ⁻¹¹	2.123 [1.75 - Inf[
rs28383843	31249893	GT/G	0.133	0.999	GT	168	3.73449x10 ⁻⁰⁶	0.127243	0.996	GT	1.48942x10 ⁻¹¹	2.118 [1.74 - Inf[
rs114612857	31250876	G/C	0.134	0.999	G	169	3.74927x10 ⁻⁰⁶	0.129976	0.999	G	5.6673x10 ⁻¹¹	2.046 [1.69 - Inf[
rs6921855	31251312	C/T	0.164	0.935	T	293	1.12988x10 ⁻⁰⁶	0.180483	0.888	T	0.000234215	0.723]0 - 0.84]

SNP	Position ^s	m/M	MAF	info	Discovery				Replication			
					RA	nfam	P	MAF	info	RA	P**	OR** [95% CI]
rs2524058	31251569	A/G	0.488	0.998	G	339	1.77248x10 ⁻⁰⁶	0.492191	0.99	G	0.000635135	0.801]0 - 0.9]
rs6899660	31251643	G/A	0.187	1	A	229	1.59688x10 ⁻⁰⁶	0.202864	0.986	A	0.000893955	0.769]0 - 0.88]
rs2524057	31251895	G/A	0.304	1	G	281	4.0282x10 ⁻⁰⁷	0.296222	0.998	G	1.7932x10 ⁻⁰⁸	1.53 [1.34 - Inf[
rs115182712	31251954	G/A	0.133	0.999	G	169	3.77605x10 ⁻⁰⁶	0.129955	0.999	G	5.58695x10 ⁻¹¹	2.047 [1.69 - Inf[
rs114020623	31251962	T/C	0.133	0.999	T	169	3.77605x10 ⁻⁰⁶	0.129955	0.999	T	5.58695x10 ⁻¹¹	2.047 [1.69 - Inf[
rs115699806	31252031	G/A	0.133	0.999	G	169	3.77713x10 ⁻⁰⁶	0.12966	0.996	G	5.43885x10 ⁻¹¹	2.051 [1.69 - Inf[
rs115931507	31252406	C/T	0.133	0.999	C	169	3.78687x10 ⁻⁰⁶	0.129945	0.999	C	5.54655x10 ⁻¹¹	2.047 [1.69 - Inf[
rs116281893	31252527	C/T	0.133	0.999	C	169	3.79012x10 ⁻⁰⁶	0.129942	0.999	C	5.5382x10 ⁻¹¹	2.047 [1.69 - Inf[
rs9348860	31252667	C/T	0.187	1	T	229	1.58306x10 ⁻⁰⁶	0.203671	0.984	T	0.00105205	0.772]0 - 0.89]
rs9348861	31252722	G/A	0.187	1	A	229	1.58214x10 ⁻⁰⁶	0.202924	0.986	A	0.000880905	0.769]0 - 0.88]
rs9348862	31252747	C/T	0.187	1	T	229	1.58182x10 ⁻⁰⁶	0.202925	0.986	T	0.00088099	0.769]0 - 0.88]
rs9368670	31252882	T/C	0.187	1	C	229	1.58182x10 ⁻⁰⁶	0.202934	0.986	C	0.0008783	0.769]0 - 0.88]
rs116350468	31252951	T/G	0.133	0.999	T	169	3.80534x10 ⁻⁰⁶	0.12993	0.999	T	5.5031x10 ⁻¹¹	2.048 [1.69 - Inf[
rs115727572	31253034	G/T	0.133	0.999	G	169	3.80865x10 ⁻⁰⁶	0.129926	0.999	G	5.48845x10 ⁻¹¹	2.048 [1.69 - Inf[
rs114206206	31253468	T/G	0.133	0.999	T	169	3.82846x10 ⁻⁰⁶	0.12991	0.999	T	5.43405x10 ⁻¹¹	2.048 [1.69 - Inf[
rs114798972	31253514	T/C	0.133	0.999	T	169	3.83177x10 ⁻⁰⁶	0.129909	0.999	T	5.42715x10 ⁻¹¹	2.048 [1.69 - Inf[
rs73728779	31253605	C/T	0.136	0.995	C	192	7.24496x10 ⁻⁰⁶	0.133893	0.984	C	5.7844x10 ⁻¹⁰	1.95 [1.62 - Inf[
rs73728781	31253619	T/C	0.136	0.994	T	187	5.19599x10 ⁻⁰⁶	0.134276	0.984	T	1.2662x10 ⁻⁰⁹	1.917 [1.59 - Inf[
rs59217589	31254280	A/T	0.133	1	A	169	3.85852x10 ⁻⁰⁶	0.129886	0.999	A	5.35205x10 ⁻¹¹	2.049 [1.69 - Inf[
rs58410461	31254299	C/A	0.133	1	C	169	3.86191x10 ⁻⁰⁶	0.129885	0.999	C	5.34815x10 ⁻¹¹	2.049 [1.69 - Inf[
rs58022700	31254334	T/C	0.133	1	T	169	3.86303x10 ⁻⁰⁶	0.129884	0.999	T	5.3448x10 ⁻¹¹	2.049 [1.69 - Inf[
rs373238011	31254364	C/CT	0.304	1	C	281	4.08278x10 ⁻⁰⁷	0.296201	0.999	C	1.71315x10 ⁻⁰⁸	1.53 [1.34 - Inf[
rs58860177	31254485	C/T	0.133	1	C	169	3.8664x10 ⁻⁰⁶	0.12988	0.999	C	5.33195x10 ⁻¹¹	2.049 [1.69 - Inf[
rs56328367	31254594	C/T	0.133	1	C	169	3.87203x10 ⁻⁰⁶	0.129877	0.999	C	5.32345x10 ⁻¹¹	2.049 [1.69 - Inf[
rs9380236	31254664	G/A	0.187	1	A	229	1.58182x10 ⁻⁰⁶	0.20308	0.987	A	0.00084798	0.768]0 - 0.88]
rs55822325	31254691	G/A	0.133	1	G	169	3.87316x10 ⁻⁰⁶	0.129874	0.999	G	5.3097x10 ⁻¹¹	2.049 [1.69 - Inf[
rs9368671	31254704	T/C	0.187	1	C	229	1.58182x10 ⁻⁰⁶	0.203085	0.987	C	0.00084659	0.768]0 - 0.88]
rs369387030	31254836	T/TC	0.187	1	TC	229	1.58182x10 ⁻⁰⁶	0.203094	0.987	TC	0.000845165	0.768]0 - 0.88]

SNP	Position ^{\$}	m/M	MAF	info	Discovery				Replication			
					RA	nfam	<i>P</i>	MAF	info	RA	<i>P</i> ^{**}	OR ^{**} [95% CI]
rs201734761	31254964	G/GAAA	0.135	0.999	G	170	4.80941x10 ⁻⁰⁶	0.132857	0.993	G	6.5957x10 ⁻¹⁰	1.943 [1.61 - Inf[
rs199720990	31254972	C/A	0.133	1	C	169	3.88336x10 ⁻⁰⁶	0.129867	0.999	C	5.284x10 ⁻¹¹	2.049 [1.69 - Inf[
rs72861464	31255063	G/A	0.187	1	A	229	1.58182x10 ⁻⁰⁶	0.203109	0.987	A	0.000841955	0.768]0 - 0.88]
rs57599285	31255183	T/C	0.133	1	T	169	3.89018x10 ⁻⁰⁶	0.129862	0.999	T	5.2683x10 ⁻¹¹	2.049 [1.69 - Inf[
rs16899147	31255201	G/A	0.187	1	A	229	1.58182x10 ⁻⁰⁶	0.20312	0.987	A	0.000839995	0.768]0 - 0.88]
rs57742463	31255210	A/C	0.133	1	A	169	3.89245x10 ⁻⁰⁶	0.129861	0.999	A	5.26505x10 ⁻¹¹	2.049 [1.69 - Inf[
rs72861465	31255344	A/G	0.187	1	G	229	1.58182x10 ⁻⁰⁶	0.203129	0.987	G	0.000837985	0.768]0 - 0.88]
rs114598080	31255442	A/G	0.133	1	A	169	3.9016x10 ⁻⁰⁶	0.13007	1	A	4.39264x10 ⁻¹¹	2.055 [1.7 - Inf[
rs55825863	31255465	A/C	0.133	1	A	169	3.9016x10 ⁻⁰⁶	0.130064	1	A	4.41027x10 ⁻¹¹	2.055 [1.7 - Inf[
rs56184612	31255523	G/A	0.133	1	G	169	3.90389x10 ⁻⁰⁶	0.130064	1	G	4.41026x10 ⁻¹¹	2.055 [1.7 - Inf[
rs56016471	31255555	C/A	0.133	1	C	169	3.90504x10 ⁻⁰⁶	0.130064	1	C	4.41026x10 ⁻¹¹	2.055 [1.7 - Inf[
rs55918251	31255811	G/A	0.133	1	G	169	3.91308x10 ⁻⁰⁶	0.130065	1	G	4.40947x10 ⁻¹¹	2.055 [1.7 - Inf[
rs2524049	31255953	G/C	0.304	1	G	281	4.11721x10 ⁻⁰⁷	0.296192	1	G	1.68619x10 ⁻⁰⁸	1.53 [1.35 - Inf[
rs17198727	31256013	T/C	0.187	1	C	229	1.58182x10 ⁻⁰⁶	0.203174	0.987	C	0.00082846	0.768]0 - 0.88]
rs17192393	31256065	G/C	0.133	1	G	169	3.92231x10 ⁻⁰⁶	0.130064	1	G	4.41029x10 ⁻¹¹	2.055 [1.7 - Inf[
rs9366776	31256630	A/G	0.187	1	G	229	1.58182x10 ⁻⁰⁶	0.203217	0.987	G	0.00081942	0.768]0 - 0.88]
rs17192421	31256693	C/T	0.133	1	C	168	3.94602x10 ⁻⁰⁶	0.130065	1	C	4.40948x10 ⁻¹¹	2.055 [1.7 - Inf[
rs17198776	31256732	T/C	0.133	1	T	167	3.94836x10 ⁻⁰⁶	0.130065	1	T	4.40948x10 ⁻¹¹	2.055 [1.7 - Inf[
rs17198783	31256746	C/T	0.133	1	C	167	3.94836x10 ⁻⁰⁶	0.130113	0.999	C	4.19371x10 ⁻¹¹	2.057 [1.7 - Inf[
rs2524044	31256753	G/T	0.304	1	G	280	4.17908x10 ⁻⁰⁷	0.296217	0.999	G	1.68302x10 ⁻⁰⁸	1.53 [1.35 - Inf[
rs10947169	31256916	C/T	0.187	1	T	229	1.58182x10 ⁻⁰⁶	0.203238	0.987	T	0.0008152	0.768]0 - 0.88]
rs114015300	31256965	A/C	0.133	1	A	167	3.95081x10 ⁻⁰⁶	0.130065	1	A	4.40947x10 ⁻¹¹	2.055 [1.7 - Inf[
rs115007911	31256982	A/C	0.133	1	A	167	3.95163x10 ⁻⁰⁶	0.130065	1	A	4.40947x10 ⁻¹¹	2.055 [1.7 - Inf[
rs146303266	31257093	GTGTCTC/G	0.133	1	GTGTCTC	167	3.95492x10 ⁻⁰⁶	0.130065	1	GTGTCTC	4.40947x10 ⁻¹¹	2.055 [1.7 - Inf[
rs115226524	31257120	C/T	0.133	1	C	167	3.95656x10 ⁻⁰⁶	0.130065	1	C	4.40866x10 ⁻¹¹	2.055 [1.7 - Inf[
rs2524042	31257160	G/C	0.304	1	G	280	4.14596x10 ⁻⁰⁷	0.296216	0.999	G	1.67362x10 ⁻⁰⁸	1.531 [1.35 - Inf[
rs115482903	31257198	A/G	0.133	1	A	167	3.96233x10 ⁻⁰⁶	0.130065	1	A	4.40866x10 ⁻¹¹	2.055 [1.7 - Inf[
rs116736925	31257229	A/G	0.133	1	A	167	3.96399x10 ⁻⁰⁶	0.130065	1	A	4.40866x10 ⁻¹¹	2.055 [1.7 - Inf[

SNP	Position [§]	m/M	MAF	info	Discovery			Replication				
					RA	nfam	<i>P</i>	MAF	info	RA	<i>P</i> **	OR** [95% CI]
rs115504545	31257251	G/A	0.133	1	G	167	3.96564x10 ⁻⁰⁶	0.130065	1	G	4.40785x10 ⁻¹¹	2.055 [1.7 - Inf[
rs116337797	31257422	A/G	0.133	1	A	167	3.97645x10 ⁻⁰⁶	0.130065	1	A	4.40705x10 ⁻¹¹	2.055 [1.7 - Inf[
rs115651636	31257533	C/T	0.133	1	C	167	3.98147x10 ⁻⁰⁶	0.130065	1	C	4.40703x10 ⁻¹¹	2.055 [1.7 - Inf[
rs114110521	31257617	A/G	0.133	1	A	167	3.98398x10 ⁻⁰⁶	0.130065	1	A	4.40703x10 ⁻¹¹	2.055 [1.7 - Inf[
rs115545796	31258036	C/A	0.133	1	C	167	3.98987x10 ⁻⁰⁶	0.130065	1	C	4.40705x10 ⁻¹¹	2.055 [1.7 - Inf[
rs182445956	31258046	C/T	0.133	1	C	167	3.98987x10 ⁻⁰⁶	0.130065	1	C	4.40705x10 ⁻¹¹	2.055 [1.7 - Inf[
rs2524039	31258226	G/A	0.304	1	G	280	4.17399x10 ⁻⁰⁷	0.296253	0.999	G	1.6586x10 ⁻⁰⁸	1.531 [1.35 - Inf[
rs114093160	31258371	A/G	0.133	1	A	170	4.00562x10 ⁻⁰⁶	0.130079	1	A	4.37174x10 ⁻¹¹	2.055 [1.7 - Inf[
rs367893790	31258626	C/CATAT	0.133	1	C	167	3.99833x10 ⁻⁰⁶	0.130066	1	C	4.40624x10 ⁻¹¹	2.055 [1.7 - Inf[
rs2256583	31258846	C/T	0.304	1	C	280	4.18126x10 ⁻⁰⁷	0.296261	0.999	C	1.65498x10 ⁻⁰⁸	1.531 [1.35 - Inf[
rs3873377	31258868	C/T	0.187	1	T	229	1.58182x10 ⁻⁰⁶	0.203506	0.988	T	0.0007632	0.767]0 - 0.88]
rs78950083	31258986	C/T	0.133	1	C	167	4.00087x10 ⁻⁰⁶	0.130066	1	C	4.40624x10 ⁻¹¹	2.055 [1.7 - Inf[
rs16899170	31259017	C/T	0.133	1	C	167	4.00087x10 ⁻⁰⁶	0.130066	1	C	4.40624x10 ⁻¹¹	2.055 [1.7 - Inf[
rs4307215	31259188	GTT/G	0.371	0.982	G	367	6.25105x10 ⁻⁰⁷	0.393949	0.948	G	0.0329502	0.877]0 - 0.99]
rs35667233	31259269	C/T	0.133	1	C	167	4.00087x10 ⁻⁰⁶	0.130066	1	C	4.40544x10 ⁻¹¹	2.055 [1.7 - Inf[
rs34115632	31259298	G/A	0.133	1	G	167	4.00087x10 ⁻⁰⁶	0.130066	1	G	4.40544x10 ⁻¹¹	2.055 [1.7 - Inf[
rs36087596	31259299	C/CT	0.133	1	C	167	4.00087x10 ⁻⁰⁶	0.130066	1	C	4.40544x10 ⁻¹¹	2.055 [1.7 - Inf[
rs35401506	31259332	C/T	0.133	1	C	167	4.00087x10 ⁻⁰⁶	0.130066	1	C	4.40544x10 ⁻¹¹	2.055 [1.7 - Inf[
rs36060788	31259338	G/A	0.133	1	G	167	4.00087x10 ⁻⁰⁶	0.130066	1	G	4.40544x10 ⁻¹¹	2.055 [1.7 - Inf[
rs35870025	31259435	T/C	0.133	1	T	167	4.00087x10 ⁻⁰⁶	0.130066	1	T	4.40544x10 ⁻¹¹	2.055 [1.7 - Inf[
rs34743644	31259443	T/C	0.133	1	T	167	4.00087x10 ⁻⁰⁶	0.130066	1	T	4.40544x10 ⁻¹¹	2.055 [1.7 - Inf[
rs116506525	31259458	C/T	0.133	1	C	167	4.00087x10 ⁻⁰⁶	0.130066	1	C	4.40544x10 ⁻¹¹	2.055 [1.7 - Inf[
rs116030808	31259495	G/A	0.133	1	G	167	4.00087x10 ⁻⁰⁶	0.130066	1	G	4.40544x10 ⁻¹¹	2.055 [1.7 - Inf[
rs115175858	31259543	C/T	0.133	1	C	167	4.00087x10 ⁻⁰⁶	0.130066	1	C	4.40544x10 ⁻¹¹	2.055 [1.7 - Inf[
rs147841590	31259588	G/GA	0.133	1	G	167	4.00087x10 ⁻⁰⁶	0.130076	1	G	4.40336x10 ⁻¹¹	2.055 [1.7 - Inf[
rs114454776	31259605	A/G	0.133	1	A	167	4.00087x10 ⁻⁰⁶	0.130076	1	A	4.40336x10 ⁻¹¹	2.055 [1.7 - Inf[
rs115106318	31259704	G/A	0.133	1	G	167	4.00087x10 ⁻⁰⁶	0.130066	1	G	4.40544x10 ⁻¹¹	2.055 [1.7 - Inf[
rs34332804	31259729	C/G	0.133	1	C	167	4.00087x10 ⁻⁰⁶	0.130066	1	C	4.40544x10 ⁻¹¹	2.055 [1.7 - Inf[

SNP	Position ^{\$}	m/M	Discovery				Replication					
			MAF	info	RA	nfam	<i>P</i>	MAF	info	RA	<i>P</i> **	OR** [95% CI]
rs34254374	31259834	G/T	0.133	1	G	167	4.00087x10 ⁻⁰⁶	0.130066	1	G	4.40544x10 ⁻¹¹	2.055 [1.7 - Inf[
rs35206735	31259837	A/G	0.133	1	A	167	4.00087x10 ⁻⁰⁶	0.130066	1	A	4.40544x10 ⁻¹¹	2.055 [1.7 - Inf[
rs114500903	31259869	C/T	0.133	1	C	167	4.00087x10 ⁻⁰⁶	0.130066	1	C	4.40544x10 ⁻¹¹	2.055 [1.7 - Inf[
rs116452682	31259870	A/G	0.133	1	A	167	4.00087x10 ⁻⁰⁶	0.130066	1	A	4.40544x10 ⁻¹¹	2.055 [1.7 - Inf[
rs6916525	31259902	G/A	0.187	1	A	229	1.58182x10 ⁻⁰⁶	0.203556	0.989	A	0.00075227	0.766]0 - 0.88]
rs6939681	31259952	G/T	0.187	1	T	229	1.58182x10 ⁻⁰⁶	0.203582	0.988	T	0.00074003	0.766]0 - 0.88]
rs34925694	31259955	G/A	0.133	1	G	167	4.00087x10 ⁻⁰⁶	0.130066	1	G	4.40544x10 ⁻¹¹	2.055 [1.7 - Inf[
rs34505728	31260004	A/C	0.133	1	A	167	4.00087x10 ⁻⁰⁶	0.130066	1	A	4.40542x10 ⁻¹¹	2.055 [1.7 - Inf[
rs35298376	31260040	G/T	0.133	1	G	167	4.00087x10 ⁻⁰⁶	0.130066	1	G	4.40463x10 ⁻¹¹	2.055 [1.7 - Inf[
rs35389342	31260049	C/T	0.133	1	C	167	4.00087x10 ⁻⁰⁶	0.130066	1	C	4.40463x10 ⁻¹¹	2.055 [1.7 - Inf[
rs35235581	31260105	A/G	0.133	1	A	167	4.00087x10 ⁻⁰⁶	0.130066	1	A	4.40463x10 ⁻¹¹	2.055 [1.7 - Inf[
rs35626283	31260168	CT/C	0.133	1	CT	167	4.00087x10 ⁻⁰⁶	0.130066	1	CT	4.40463x10 ⁻¹¹	2.055 [1.7 - Inf[
rs114392121	31260185	C/T	0.133	1	C	167	4.00087x10 ⁻⁰⁶	0.130066	1	C	4.40463x10 ⁻¹¹	2.055 [1.7 - Inf[
rs115042633	31260201	A/T	0.133	1	A	167	4.00087x10 ⁻⁰⁶	0.130066	1	A	4.40463x10 ⁻¹¹	2.055 [1.7 - Inf[
rs9357122	31260345	C/T	0.187	1	T	229	1.58182x10 ⁻⁰⁶	0.20359	0.989	T	0.000745405	0.766]0 - 0.88]
rs117127791	31260398	G/A	0.133	1	G	167	4.00087x10 ⁻⁰⁶	0.130066	1	G	4.40463x10 ⁻¹¹	2.055 [1.7 - Inf[
rs114601215	31260462	G/C	0.133	1	G	167	4.00002x10 ⁻⁰⁶	0.130066	1	G	4.40463x10 ⁻¹¹	2.055 [1.7 - Inf[
rs9394051	31260569	C/G	0.187	1	G	231	1.54218x10 ⁻⁰⁶	0.203612	0.989	G	0.000741785	0.766]0 - 0.88]
rs114489270	31260583	C/T	0.133	1	C	167	4.00002x10 ⁻⁰⁶	0.130066	1	C	4.40462x10 ⁻¹¹	2.055 [1.7 - Inf[
rs116548532	31260594	G/T	0.133	1	G	167	4.00002x10 ⁻⁰⁶	0.130066	1	G	4.40462x10 ⁻¹¹	2.055 [1.7 - Inf[
rs116537416	31260633	C/T	0.133	1	C	167	4.00002x10 ⁻⁰⁶	0.130067	1	C	4.40383x10 ⁻¹¹	2.055 [1.7 - Inf[
rs9394052	31260708	T/C	0.187	1	C	231	1.51956x10 ⁻⁰⁶	0.203627	0.989	C	0.000739345	0.766]0 - 0.88]
rs55993314	31261056	T/C	0.133	1	T	167	3.99833x10 ⁻⁰⁶	0.130067	1	T	4.40382x10 ⁻¹¹	2.055 [1.7 - Inf[
rs16899178	31261137	T/C	0.133	1	T	167	3.99833x10 ⁻⁰⁶	0.130078	1	T	4.37508x10 ⁻¹¹	2.055 [1.7 - Inf[
rs56409019	31261358	G/C	0.133	1	G	167	3.99833x10 ⁻⁰⁶	0.130067	1	G	4.40383x10 ⁻¹¹	2.055 [1.7 - Inf[
rs55793836	31261393	T/C	0.133	1	T	167	3.99833x10 ⁻⁰⁶	0.130067	1	T	4.40383x10 ⁻¹¹	2.055 [1.7 - Inf[
rs9295969	31261470	A/G	0.188	0.928	G	418	1.46444x10 ⁻⁰⁶	0.203731	0.99	G	0.000719405	0.766]0 - 0.88]
rs34504767	31261492	T/C	0.133	1	T	167	3.99833x10 ⁻⁰⁶	0.130084	1	T	4.32812x10 ⁻¹¹	2.055 [1.7 - Inf[

SNP	Position [§]	m/M	Discovery				Replication					
			MAF	info	RA	nfam	P	MAF	info	RA	P**	OR** [95% CI]
rs115748458	31261570	G/T	0.133	1	G	167	3.99833x10 ⁻⁰⁶	0.130084	1	G	4.32812x10 ⁻¹¹	2.055 [1.7 - Inf[
rs116134275	31261571	C/T	0.133	1	C	167	3.99833x10 ⁻⁰⁶	0.130084	1	C	4.32812x10 ⁻¹¹	2.055 [1.7 - Inf[
rs35742578	31261645	A/G	0.133	1	A	167	3.99833x10 ⁻⁰⁶	0.130084	1	A	4.32812x10 ⁻¹¹	2.055 [1.7 - Inf[
rs35196124	31261777	T/A	0.133	1	T	167	3.99833x10 ⁻⁰⁶	0.130084	1	T	4.32733x10 ⁻¹¹	2.055 [1.7 - Inf[
rs35933419	31261781	G/A	0.133	1	G	167	3.99833x10 ⁻⁰⁶	0.130084	1	G	4.32733x10 ⁻¹¹	2.055 [1.7 - Inf[
rs114265643	31261851	T/C	0.133	1	T	167	3.99833x10 ⁻⁰⁶	0.130084	1	T	4.32733x10 ⁻¹¹	2.055 [1.7 - Inf[
rs187999352	31261887	T/A	0.133	1	T	167	3.99833x10 ⁻⁰⁶	0.130084	1	T	4.32733x10 ⁻¹¹	2.055 [1.7 - Inf[
rs192233466	31261888	A/T	0.133	1	A	167	3.99833x10 ⁻⁰⁶	0.130084	1	A	4.32733x10 ⁻¹¹	2.055 [1.7 - Inf[
rs2524152	31261929	T/C	0.303	0.993	T	301	3.73601x10 ⁻⁰⁷	0.296316	0.999	T	1.60616x10 ⁻⁰⁸	1.531 [1.35 - Inf[
rs35611056	31261956	G/A	0.133	1	G	167	3.99833x10 ⁻⁰⁶	0.130052	0.999	G	4.28072x10 ⁻¹¹	2.056 [1.7 - Inf[
rs34187356	31261983	C/T	0.133	1	C	167	3.99833x10 ⁻⁰⁶	0.130052	0.999	C	4.28072x10 ⁻¹¹	2.056 [1.7 - Inf[
rs56042166	31262024	G/A	0.133	1	G	167	3.99833x10 ⁻⁰⁶	0.130052	0.999	G	4.28072x10 ⁻¹¹	2.056 [1.7 - Inf[
rs2524150	31262650	A/T	0.301	0.988	A	306	3.7192x10 ⁻⁰⁷	0.296332	0.999	A	1.60888x10 ⁻⁰⁸	1.531 [1.35 - Inf[
rs2524149	31262651	T/C	0.301	0.988	T	306	3.72358x10 ⁻⁰⁷	0.296332	0.999	T	1.60888x10 ⁻⁰⁸	1.531 [1.35 - Inf[
rs189869162	31262677	C/T	0.133	1	C	167	3.99833x10 ⁻⁰⁶	0.130068	1	C	4.39983x10 ⁻¹¹	2.055 [1.7 - Inf[
rs115667045	31262717	A/T	0.133	1	A	167	3.99833x10 ⁻⁰⁶	0.130068	1	A	4.39982x10 ⁻¹¹	2.055 [1.7 - Inf[
rs114899495	31262761	T/C	0.133	1	T	167	3.99833x10 ⁻⁰⁶	0.130068	1	T	4.39982x10 ⁻¹¹	2.055 [1.7 - Inf[
rs116654277	31262769	T/C	0.133	1	T	167	3.99833x10 ⁻⁰⁶	0.130068	1	T	4.39982x10 ⁻¹¹	2.055 [1.7 - Inf[
rs2524147	31262781	A/G	0.3	0.987	A	306	3.71854x10 ⁻⁰⁷	0.29637	0.999	A	1.61089x10 ⁻⁰⁸	1.531 [1.35 - Inf[
rs2524146	31262783	C/T	0.3	0.987	C	307	3.7245x10 ⁻⁰⁷	0.29637	0.999	C	1.61089x10 ⁻⁰⁸	1.531 [1.35 - Inf[
rs116405890	31262870	T/C	0.133	1	T	167	3.99833x10 ⁻⁰⁶	0.130068	1	T	4.39982x10 ⁻¹¹	2.055 [1.7 - Inf[
rs115219503	31262959	C/T	0.133	1	C	167	3.99833x10 ⁻⁰⁶	0.130085	1	C	4.38813x10 ⁻¹¹	2.055 [1.7 - Inf[
rs115973915	31263349	A/C	0.133	1	A	167	4.00378x10 ⁻⁰⁶	0.130068	1	A	4.39821x10 ⁻¹¹	2.055 [1.7 - Inf[
rs114016160	31263410	A/G	0.133	1	A	167	4.00463x10 ⁻⁰⁶	0.130069	1	A	4.39742x10 ⁻¹¹	2.055 [1.7 - Inf[
rs115101855	31263482	T/A	0.133	1	T	167	4.00447x10 ⁻⁰⁶	0.130069	1	T	4.39742x10 ⁻¹¹	2.055 [1.7 - Inf[
rs114601085	31263548	T/C	0.133	1	T	167	4.00583x10 ⁻⁰⁶	0.130069	1	T	4.39742x10 ⁻¹¹	2.055 [1.7 - Inf[
rs114294380	31263601	G/T	0.133	1	G	167	4.00702x10 ⁻⁰⁶	0.130069	1	G	4.39742x10 ⁻¹¹	2.055 [1.7 - Inf[
rs200307568	31263721	T/G	0.133	1	T	167	4.0079x10 ⁻⁰⁶	0.130069	1	T	4.39743x10 ⁻¹¹	2.055 [1.7 - Inf[

SNP	Position ^s	m/M	Discovery				Replication					
			MAF	info	RA	nfam	P	MAF	info	RA	P**	OR** [95% CI]
rs114583506	31263801	T/G	0.133	1	T	167	4.00927x10 ⁻⁰⁶	0.130069	1	T	4.39742x10 ⁻¹¹	2.055 [1.7 - Inf[
rs116165038	31263852	C/G	0.136	0.99	C	181	6.72289x10 ⁻⁰⁶	0.130097	1	C	4.39803x10 ⁻¹¹	2.055 [1.7 - Inf[
rs115865502	31264178	T/C	0.133	1	T	167	4.01408x10 ⁻⁰⁶	0.130069	1	T	4.39582x10 ⁻¹¹	2.055 [1.7 - Inf[
rs115228090	31264284	T/C	0.132	0.996	T	170	3.89798x10 ⁻⁰⁶	0.127262	0.982	T	5.62565x10 ⁻¹¹	2.073 [1.71 - Inf[
rs115805679	31264288	C/T	0.132	0.996	C	170	3.89999x10 ⁻⁰⁶	0.127214	0.982	C	5.4538x10 ⁻¹¹	2.075 [1.71 - Inf[
rs115494471	31264408	T/C	0.133	1	T	167	4.01494x10 ⁻⁰⁶	0.130069	1	T	4.39583x10 ⁻¹¹	2.055 [1.7 - Inf[
rs114973736	31264497	C/T	0.133	1	C	167	4.01494x10 ⁻⁰⁶	0.130069	1	C	4.39583x10 ⁻¹¹	2.055 [1.7 - Inf[
rs115964138	31264512	A/G	0.133	1	A	167	4.01494x10 ⁻⁰⁶	0.130069	1	A	4.39583x10 ⁻¹¹	2.055 [1.7 - Inf[
rs116334679	31264517	C/T	0.133	1	C	167	4.01494x10 ⁻⁰⁶	0.130069	1	C	4.39583x10 ⁻¹¹	2.055 [1.7 - Inf[
rs115700453	31264577	C/T	0.133	1	C	167	4.01494x10 ⁻⁰⁶	0.130069	1	C	4.39582x10 ⁻¹¹	2.055 [1.7 - Inf[
rs200436274	31264580	T/TC	0.133	1	T	167	4.01494x10 ⁻⁰⁶	0.130069	1	T	4.39503x10 ⁻¹¹	2.055 [1.7 - Inf[
rs574228159	31264583	T/G	0.133	1	T	167	4.01494x10 ⁻⁰⁶	0.130069	1	T	4.39503x10 ⁻¹¹	2.055 [1.7 - Inf[
rs9366777	31264715	T/A	0.188	1	A	229	2.65474x10 ⁻⁰⁶	0.205846	0.988	T	0.5	ns
rs114770325	31264845	C/T	0.133	1	C	167	4.01371x10 ⁻⁰⁶	0.13007	1	C	4.39264x10 ⁻¹¹	2.055 [1.7 - Inf[
rs114904826	31264960	C/T	0.133	1	C	167	4.01097x10 ⁻⁰⁶	0.13007	1	C	4.39264x10 ⁻¹¹	2.055 [1.7 - Inf[
rs115753074	31265168	A/G	0.133	1	A	167	4.00754x10 ⁻⁰⁶	0.13007	1	A	4.39324x10 ⁻¹¹	2.055 [1.7 - Inf[
rs115975714	31265242	G/T	0.133	1	G	167	4.00617x10 ⁻⁰⁶	0.130071	1	G	4.38807x10 ⁻¹¹	2.055 [1.7 - Inf[
rs17198811	31265634	T/C	0.133	1	T	167	4.00275x10 ⁻⁰⁶	0.130072	1	T	4.38595x10 ⁻¹¹	2.055 [1.7 - Inf[
rs17198818	31265695	A/G	0.133	1	A	167	4.00139x10 ⁻⁰⁶	0.130073	1	A	4.38258x10 ⁻¹¹	2.055 [1.7 - Inf[
rs3828860	31265736	T/C	0.133	1	T	167	4.00139x10 ⁻⁰⁶	0.130073	1	T	4.3826x10 ⁻¹¹	2.055 [1.7 - Inf[
rs17192470	31265743	T/C	0.133	1	T	167	4.00275x10 ⁻⁰⁶	0.130072	1	T	4.38339x10 ⁻¹¹	2.055 [1.7 - Inf[
rs17192491	31265788	G/C	0.133	1	G	167	4.00002x10 ⁻⁰⁶	0.130073	1	G	4.37889x10 ⁻¹¹	2.055 [1.7 - Inf[
rs17198839	31265807	C/A	0.133	1	C	167	4.00002x10 ⁻⁰⁶	0.130073	1	C	4.37889x10 ⁻¹¹	2.055 [1.7 - Inf[
rs9348864	31265855	C/T	0.17	0.998	T	269	3.00517x10 ⁻⁰⁶	0.190582	0.996	T	0.001920905	0.78]0 - 0.9]
rs17198860	31265875	A/G	0.133	1	A	167	4.00002x10 ⁻⁰⁶	0.130074	1	A	4.37294x10 ⁻¹¹	2.055 [1.7 - Inf[
rs148136265	31265884	A/ACAAT	0.17	0.999	ACAAT	261	3.00195x10 ⁻⁰⁶	0.190855	0.996	ACAAT	0.00164068	0.776]0 - 0.89]
rs17192498	31265887	G/A	0.138	0.983	G	254	6.55644x10 ⁻⁰⁶	0.138722	0.948	G	1.37604x10 ⁻¹⁰	2.01 [1.66 - Inf[
rs17192505	31265910	G/T	0.133	1	G	167	4.00172x10 ⁻⁰⁶	0.130091	1	G	4.31903x10 ⁻¹¹	2.055 [1.7 - Inf[

SNP	Position [§]	m/M	MAF	info	Discovery			Replication				
					RA	nfam	<i>P</i>	MAF	info	RA	<i>P</i> **	OR** [95% CI]
rs17192512	31265914	G/A	0.133	1	G	167	4.00002x10 ⁻⁰⁶	0.130074	1	G	4.37245x10 ⁻¹¹	2.055 [1.7 - Inf[
rs17192533	31266085	G/C	0.135	1	G	166	5.13922x10 ⁻⁰⁶	0.132485	0.994	G	2.87749x10 ⁻¹⁰	1.976 [1.64 - Inf[
rs17198909	31266189	T/A	0.133	0.997	T	166	5.45889x10 ⁻⁰⁶	0.129273	0.995	T	5.70035x10 ⁻¹¹	2.053 [1.69 - Inf[
rs138758697	31266310	A/AG	0.133	1	A	167	4.00002x10 ⁻⁰⁶	0.130074	1	A	4.37559x10 ⁻¹¹	2.055 [1.7 - Inf[
rs16899203	31266335	C/T	0.133	1	C	167	4.00002x10 ⁻⁰⁶	0.130073	1	C	4.37718x10 ⁻¹¹	2.055 [1.7 - Inf[
rs139795635	31266411	TA/T	0.133	1	TA	167	4.00002x10 ⁻⁰⁶	0.130074	1	TA	4.37304x10 ⁻¹¹	2.055 [1.7 - Inf[
rs115491491	31266465	G/A	0.133	1	G	167	4.00002x10 ⁻⁰⁶	0.130074	1	G	4.37064x10 ⁻¹¹	2.055 [1.7 - Inf[
rs116364562	31266479	C/G	0.133	1	C	167	4.00002x10 ⁻⁰⁶	0.130074	1	C	4.37064x10 ⁻¹¹	2.055 [1.7 - Inf[
rs201641102	31267776	G/A	0.133	1	G	167	3.99833x10 ⁻⁰⁶	0.13008	0.999	G	4.33859x10 ⁻¹¹	2.055 [1.7 - Inf[
rs116647350	31268833	A/G	0.133	1	A	167	3.99833x10 ⁻⁰⁶	0.130079	0.999	A	4.33426x10 ⁻¹¹	2.055 [1.7 - Inf[
rs12663075	31269256	A/C	0.133	1	A	167	3.99833x10 ⁻⁰⁶	0.130082	0.999	A	4.33811x10 ⁻¹¹	2.055 [1.7 - Inf[
rs56138398	31269299	C/G	0.133	1	C	167	3.99833x10 ⁻⁰⁶	0.130081	0.999	C	4.32352x10 ⁻¹¹	2.056 [1.7 - Inf[
rs3915970	31269460	C/T	0.135	1	C	166	5.15058x10 ⁻⁰⁶	0.132603	0.993	C	2.82343x10 ⁻¹⁰	1.977 [1.64 - Inf[
rs2854007	31313586	G/A	0.134	1	G	167	8.10524x10 ⁻⁰⁶	0.134388	0.989	G	2.24385x10 ⁻¹⁰	1.962 [1.63 - Inf[
rs2854006	31313591	A/G	0.134	1	A	167	8.10524x10 ⁻⁰⁶	0.134387	0.989	A	2.24389x10 ⁻¹⁰	1.962 [1.63 - Inf[
rs2596526	31313724	C/T	0.134	0.999	C	167	8.15884x10 ⁻⁰⁶	0.132264	0.997	C	9.99385x10 ⁻¹¹	1.997 [1.66 - Inf[
rs2596524	31313906	A/G	0.134	1	A	167	8.10206x10 ⁻⁰⁶	0.132368	0.998	A	1.09354x10 ⁻¹⁰	1.993 [1.65 - Inf[
rs7453967	31314243	G/T	0.134	1	G	165	8.26057x10 ⁻⁰⁶	0.132291	0.997	G	1.04372x10 ⁻¹⁰	1.995 [1.65 - Inf[
rs4475359	31314298	T/G	0.136	1	T	164	8.91404x10 ⁻⁰⁶	0.136445	0.987	T	5.2197x10 ⁻¹⁰	1.926 [1.6 - Inf[
rs9265929	31314313	C/T	0.134	1	C	166	8.13151x10 ⁻⁰⁶	0.132359	0.998	C	1.10244x10 ⁻¹⁰	1.992 [1.65 - Inf[
rs9265930	31314347	A/C	0.134	1	A	166	8.13151x10 ⁻⁰⁶	0.132359	0.998	A	1.10298x10 ⁻¹⁰	1.992 [1.65 - Inf[
rs2508000	31314588	T/C	0.134	1	T	166	8.13151x10 ⁻⁰⁶	0.132354	0.998	T	1.10754x10 ⁻¹⁰	1.992 [1.65 - Inf[
rs9265950	31315261	C/A	0.134	0.999	C	178	7.4791x10 ⁻⁰⁶	0.134039	0.989	C	2.58221x10 ⁻¹⁰	1.96 [1.63 - Inf[
rs9265959	31315425	T/C	0.134	1	T	166	8.13151x10 ⁻⁰⁶	0.132336	0.998	T	1.12515x10 ⁻¹⁰	1.992 [1.65 - Inf[
rs9265963	31315540	A/G	0.134	1	A	166	8.13151x10 ⁻⁰⁶	0.132334	0.998	A	1.12709x10 ⁻¹⁰	1.991 [1.65 - Inf[
rs2596520	31316481	T/C	0.134	0.999	T	166	8.31101x10 ⁻⁰⁶	0.132288	0.998	T	1.1321x10 ⁻¹⁰	1.992 [1.65 - Inf[
rs2596519	31316563	T/A	0.134	0.999	T	166	8.31101x10 ⁻⁰⁶	0.132289	0.998	T	1.13392x10 ⁻¹⁰	1.992 [1.65 - Inf[
rs2596518	31316759	G/A	0.134	1	G	166	8.13487x10 ⁻⁰⁶	0.132313	0.998	G	1.14603x10 ⁻¹⁰	1.991 [1.65 - Inf[

SNP	Position [§]	m/M	MAF	info	Discovery				Replication			
					RA	nfam	P	MAF	info	RA	P**	OR** [95% CI]
rs2523620	31317514	C/A	0.134	1	C	167	8.11875x10 ⁻⁰⁶	0.132311	0.998	C	1.15886x10 ⁻¹⁰	1.991 [1.65 - Inf[
rs2596515	31317619	A/G	0.134	1	A	167	8.11061x10 ⁻⁰⁶	0.13231	0.998	A	1.16083x10 ⁻¹⁰	1.991 [1.65 - Inf[
rs2596513	31317762	G/A	0.134	1	G	167	8.09789x10 ⁻⁰⁶	0.132309	0.997	G	1.16282x10 ⁻¹⁰	1.991 [1.65 - Inf[
rs2596511	31317855	T/A	0.134	1	T	169	8.08291x10 ⁻⁰⁶	0.13237	0.997	T	1.23237x10 ⁻¹⁰	1.989 [1.65 - Inf[
rs2523618	31318303	C/T	0.134	0.999	C	171	7.82489x10 ⁻⁰⁶	0.132286	0.996	C	1.21028x10 ⁻¹⁰	1.991 [1.65 - Inf[
rs2442724	31319907	C/T	0.134	0.998	C	177	5.98684x10 ⁻⁰⁶	0.132108	0.985	C	1.77509x10 ⁻¹⁰	1.985 [1.64 - Inf[
rs1065386	31324547	C/G	0.442	0.945	G	421	3.87273x10 ⁻⁰⁷	0.442768	0.83	G	0.00413253	0.82]0 - 0.93]
rs1050570	31324549	C/T	0.442	0.945	T	421	3.8725x10 ⁻⁰⁷	0.442768	0.83	T	0.004132705	0.82]0 - 0.93]
rs2523656	31444048	C/G	0.469	0.995	G	330	9.65793x10 ⁻⁰⁶	0.461882	0.949	G	0.0169342	0.863]0 - 0.97]
rs2523647	31449778	G/A	0.457	0.994	A	339	2.61139x10 ⁻⁰⁶	0.452727	0.958	A	0.00641935	0.842]0 - 0.94]
rs78485683	31456691	CTT/CT	0.394	0.987	CT	358	9.15212x10 ⁻⁰⁶	0.401221	0.976	CT	0.134367	0.925]0 - 1.04]
rs10661543	31462605	CAAAA/C	0.188	0.993	C	259	7.77775x10 ⁻⁰⁶	0.206645	0.929	CAAAA	0.5	ns
rs375883533	31470020	A/G	0.083	0.978	A	111	9.74943x10 ⁻⁰⁶	0.0685344	0.926	A	1.35607x10 ⁻⁰⁹	2.568 [1.94 - Inf[
rs3830668	31502882	A/ATGT	0.181	0.992	ATGT	254	5.22218x10 ⁻⁰⁶	0.199162	0.967	ATGT	0.4264245	0.984]0 - 1.13]
rs61523215	32415606	A/AT	0.176	0.981	AT	241	5.09436x10 ⁻⁰⁶	0.16619	0.857	AT	0.00476605	0.778]0 - 0.91]
rs116673414	32593097	G/T	0.151	0.978	G	217	7.9479x10 ⁻⁰⁶	0.145342	0.938	G	7.2913x10 ⁻⁰⁹	1.828 [1.52 - Inf[
rs35675538	32593127	T/C	0.151	0.978	T	217	8.18407x10 ⁻⁰⁶	0.147271	0.945	T	1.38032x10 ⁻⁰⁸	1.796 [1.5 - Inf[
rs9272346	32604372	G/A	0.469	0.904	G	430	5.47794x10 ⁻⁰⁶	0.429895	0.86	G	6.5357x10 ⁻¹³	1.71 [1.51 - Inf[
rs3187964	32605207	C/G	0.457	0.916	C	419	1.28095x10 ⁻⁰⁶	0.426129	0.863	C	5.2794x10 ⁻¹³	1.717 [1.51 - Inf[
rs707951	32609813	T/C	0.313	0.976	T	343	3.37407x10 ⁻⁰⁶	0.274689	0.841	T	2.96954x10 ⁻¹⁰	1.696 [1.47 - Inf[
rs9272776	32610270	T/C	0.349	0.982	T	366	6.55514x10 ⁻⁰⁶	0.309258	0.866	T	3.77476x10 ⁻¹⁰	1.649 [1.44 - Inf[
rs78570891	32611590	G/A	0.365	0.946	G	427	2.73452x10 ⁻⁰⁶	0.338893	0.806	G	3.66137x10 ⁻⁰⁹	1.605 [1.4 - Inf[
rs9273508	32628439	A/G	0.295	0.974	G	378	7.2503x10 ⁻⁰⁶	0.324356	0.897	G	0.000165505	0.763]0 - 0.86]
rs17212014	32637472	T/C	0.206	0.935	C	365	6.13472x10 ⁻⁰⁷	0.222999	0.826	C	0.0401682	0.857]0 - 0.99]
rs28371211	32637528	A/C	0.209	0.941	C	363	3.47303x10 ⁻⁰⁷	0.225738	0.835	C	0.02366855	0.841]0 - 0.97]

RA = risk allele; MAF = minor allele frequency; info = information; OR = odds ratio

[§] positions are given according to the hg19 genome build

* with respect to the minor allele

one-tailed test

Table S6. LD-based clumping of replicated SNPs within the HLA region in the case/control replication sample

Lead SNP	Discovery <i>P</i>	Replication <i>P</i> *	Clumped SNPs
rs114598080	3.90x10 ⁻⁰⁶	4.39x10 ⁻¹¹	rs72855954, 6:31264583:G:T, rs111411820, rs112030670, rs112056872, rs112758902, rs112815193, rs113288104, rs113390008, rs113565451, rs113831989, rs114015300, rs114016160, rs114020623, rs114093160, rs114110521, rs114206206, rs114240643, rs114265643, rs114294380, rs114392121, rs114454776, rs114475699, rs114489270, rs114500903, rs114583506, rs114601085, rs114601215, rs114612857, rs114770325, rs114798972, rs114899495, rs114904826, rs114973736, rs115007911, rs115042633, rs115101855, rs115106318, rs115175858, rs115182712, rs115219503, rs115226524, rs115228090, rs115482903, rs115491491, rs115494471, rs115504545, rs115545796, rs115651636, rs115667045, rs115699806, rs115700453, rs115727572, rs115737821, rs115748458, rs115753074, rs115805679, rs115865502, rs115931507, rs115964138, rs115973915, rs115975714, rs116030808, rs116134275, rs116165038, rs116281893, rs116334679, rs116337797, rs116350468, rs116364562, rs116405890, rs116452682, rs116506525, rs116537416, rs116548532, rs116647350, rs116654277, rs116736925, rs117127791, rs12662096, rs12662501, rs12662527, rs12662550, rs12663075, rs12664433, rs12665166, rs12665531, rs138693838, rs138758697, rs139795635, rs139975409, rs141206831, rs141822551, rs145021772, rs146303266, rs147841590, rs149432671, rs16899170, rs16899178, rs16899203, rs17191040, rs17192281, rs17192288, rs17192295, rs17192302, rs17192323, rs17192393, rs17192421, rs17192470, rs17192491, rs17192498, rs17192505, rs17192512, rs17192533, rs17197402, rs17198664, rs17198706, rs17198776, rs17198783, rs17198811, rs17198818, rs17198839, rs17198860, rs17198909, rs182445956, rs187999352, rs189616187, rs189869162, rs192233466, rs199720990, rs199987285, rs200307568, rs200436274, rs201234764, rs201641102, rs201734761, rs2253489, rs2394887, rs2394897, rs2394904, rs2442724, rs2508000, rs2523618, rs2523620, rs2596511, rs2596513, rs2596515, rs2596518, rs2596519, rs2596520, rs2596524, rs2596526, rs28383843, rs28457789, rs2854006, rs2854007, rs28709322, rs34115632, rs34187356, rs34254374, rs34332804, rs34504767, rs34505728, rs34743644, rs34925694, rs35196124, rs35206735, rs35235581, rs35298376, rs35389342, rs35391481, rs35401506, rs35611056, rs35626283, rs35667233, rs35742578, rs35870025, rs35891864, rs35933419, rs36060788, rs36087596, rs367893790, rs371249684, rs3734869, rs375883533, rs377461698, rs3828860, rs3869118, rs3899471, rs3915970, rs4084262, rs4332019, rs4475359, rs4516988, rs4713440, rs55651925, rs55685143, rs55783607, rs55793836, rs55822325, rs55825863, rs55839536, rs55918251, rs55993314, rs56016471, rs56042166, rs56138398, rs56178408, rs56184612, rs56210254, rs56328367, rs56332747, rs56375204, rs56409019, rs57599285, rs57742463, rs58022700, rs58114162, rs58410461, rs58860177, rs59217589, rs6913631, rs6913894, rs72863879, rs73392854, rs73728770, rs73728779, rs73728781, rs7453967, rs78950083, rs9265929, rs9265930, rs9265950, rs9265959, rs9265963, rs9468884, rs9468885, rs9468886, rs9468913, rs9500884, rs9501079, rs9501082, rs9501351, rs9501506, rs9501507, rs9501513
rs2853946	1.11x10 ⁻⁰⁷	5.05x10 ⁻⁰⁶	rs2524152, rs2524150, rs2524149, rs2524147, rs2524146, rs2256583, rs2524039, rs2524042, rs2524044, rs2524049, rs373238011, rs2524057, rs9461650, rs2394945

Lead SNP	Discovery <i>P</i>	Replication <i>P</i> *	Clumped SNPs
rs3094197	5.25x10 ⁻⁰⁷	2.38x10 ⁻⁰⁵	rs3131005, rs3094199
rs2844633	1.73x10 ⁻⁰⁸	4.20x10 ⁻⁰⁴	rs2844634, 6:31085340:G:A, 6:31091642:C:G, rs10947140, rs1265082, rs1265107, rs1265110, rs1265113, rs1265160, rs1265163, rs28383830, rs3094196, rs707913, rs9281239
rs2524084	3.33x10 ⁻⁰⁶	5.01x10 ⁻⁰⁴	rs79997604, rs2394898
rs9264181	6.92x10 ⁻⁰⁶	1.91x10 ⁻⁰²	6:31091862, 6:31208289:CATG:C, rs2394907, rs3095250, rs3095257, rs3130434, rs3130435, rs3130534, rs3130540, rs9264179, rs9264180, rs9264183, rs9264184, rs9264186, rs9264187, rs9264188
rs3187964	1.28x10 ⁻⁰⁶	5.28x10 ⁻¹³	rs9272346, rs707951, rs9272776, rs78570891
rs116673414	7.95x10 ⁻⁰⁶	7.29x10 ⁻⁰⁹	rs35675538
rs1265048	8.72x10 ⁻⁰⁶	1.58x10 ⁻⁰⁶	
rs3094194	1.43x10 ⁻⁰⁸	5.03x10 ⁻⁰⁶	
rs3095309	8.16x10 ⁻⁰⁹	9.46x10 ⁻⁰⁵	6:31091862, 6:31090672:A:G, 6:31090945:C:T, 6:31091163:G:A, 6:31091447:C:T
rs9273508	7.25x10 ⁻⁰⁶	1.66x10 ⁻⁰⁴	rs28371211, rs17212014
rs6921855	1.13x10 ⁻⁰⁶	2.34x10 ⁻⁰⁴	6:31252667:T:C, 6:31252722:A:G, 6:31252747:T:C, 6:31252882:C:T, rs10947169, rs148136265, rs16899147, rs17198727, rs2524075, rs369387030, rs3873377, rs6899660, rs6916525, rs6939681, rs72861464, rs72861465, rs9295969, rs9348864, rs9357122, rs9366776, rs9368671, rs9380236, rs9394051, rs9394052
rs3132557	6.16x10 ⁻⁰⁶	2.98x10 ⁻⁰⁴	
rs2524058	1.77x10 ⁻⁰⁶	6.35x10 ⁻⁰⁴	rs2844605, rs2844606
rs1065386	3.87x10 ⁻⁰⁷	4.13x10 ⁻⁰³	rs1050570
rs61523215	5.09x10 ⁻⁰⁶	4.77x10 ⁻⁰³	
rs2523647	2.61x10 ⁻⁰⁶	6.42x10 ⁻⁰³	rs2523656

* one-tailed test

Table S7. Results of the multivariate analysis within the HLA region in the case/control replication sample

SNP (chr:position ^{\$})	m/M	Gene	MAF	Discovery GWAS		Replication cohort			
				Univariate analysis		Univariate analysis		Multivariate analysis	
				<i>P</i>	OR [CI 95%]	<i>P</i> [#]	OR ^{*#} [CI 95%]	<i>P</i> [#]	OR ^{*#} [CI 95%]
rs1265048 (6:31081409)	C/T	<i>C6orf15</i>	0.49	8.72x10 ⁻⁰⁶	0.63 [0.52 -0.63]	1.58x10 ⁻⁰⁶	0.72]0 - 0.81]	1.11x10 ⁻⁰²	0.83 [0.72-0.96]
rs114598080 (6:31255442)	A/G	<i>HLA-C</i>	0.10	3.90x10 ⁻⁰⁶	1.85 [1.39 -2.44]	4.39x10 ⁻¹¹	2.06 [1.7 - Inf[3.75x10 ⁻⁰⁵	1.64 [1.29 -2.09]
rs3187964 (6:32605207)	C/G	<i>HLA-DQA1</i>	0.41	1.28x10 ⁻⁰⁶	1.52 [1.25 - 1.85]	5.28x10 ⁻¹³	1.72 [1.51 - Inf[7.80x10 ⁻⁰⁸	1.53 [1.31 - 1.79]
rs1065386 (6:31324547)	C/G	<i>HLA-B</i>	0.44	3.87x10 ⁻⁰⁷	0.57 [0.37-0.78]	4.13x10 ⁻⁰³	0.82]0 - 0.93]	2.20x10 ⁻⁰¹	

m/M = minor/Major alleles; MAF = minor allele frequency; OR = odds ratio; CI = confidence interval

^{\$} positions are given according to the hg19 genome build

* with respect to the minor allele

[#] one-tailed test

Table S8. SNPs in high linkage disequilibrium ($r^2>0.8$) with rs114598080 in the 1000 genomes KHV population

SNP Id	Position ^s	Alleles	MAF	Distance	Dprime	R ²	Correlated Alleles	RegulomeDB	Function	GWAS <i>P</i>	Replication <i>P</i> [#]
rs73392854	31249326	(A/G)	0.1212	-6116	1	1	G=A,A=G	6	NA	3.95785x10 ⁻⁰⁶	1.45965x10 ⁻¹¹
rs28383843	31249893	(-/T)	0.1212	-5549	1	1	G=-,A=T	6	NA	3.73449x10 ⁻⁰⁶	1.48942x10 ⁻¹¹
rs141206831	31249358	(AAG/-)	0.1212	-6084	1	1	G=AAG,A=-	.	NA	4.35254x10 ⁻⁰⁶	1.64104x10 ⁻¹¹
rs189616187	31248995	(C/T)	0.1212	-6447	1	1	G=C,A=T	6	NA	3.91138x10 ⁻⁰⁶	2.06818x10 ⁻¹¹
rs73728770	31248887	(G/C)	0.1212	-6555	1	1	G=G,A=C	7	NA	3.89267x10 ⁻⁰⁶	2.1005x10 ⁻¹¹
rs58114162	31248825	(C/T)	0.1212	-6617	1	1	G=C,A=T	7	NA	3.88432x10 ⁻⁰⁶	2.11841x10 ⁻¹¹
rs17198706	31248693	(C/G)	0.1212	-6749	1	1	G=C,A=G	7	NA	3.86318x10 ⁻⁰⁶	2.15749x10 ⁻¹¹
rs17192323	31248324	(C/T)	0.1212	-7118	1	1	G=C,A=T	6	NA	3.81642x10 ⁻⁰⁶	2.25474x10 ⁻¹¹
rs17192302	31248256	(C/T)	0.1212	-7186	1	1	G=C,A=T	7	NA	3.80848x10 ⁻⁰⁶	2.27169x10 ⁻¹¹
rs17192295	31248114	(C/T)	0.1212	-7328	1	1	G=C,A=T	7	NA	3.79358x10 ⁻⁰⁶	2.30558x10 ⁻¹¹
rs17192288	31248091	(G/A)	0.1212	-7351	1	1	G=G,A=A	6	NA	3.79097x10 ⁻⁰⁶	2.31154x10 ⁻¹¹
rs28709322	31247804	(G/A)	0.1212	-7638	1	1	G=G,A=A	6	NA	3.76227x10 ⁻⁰⁶	2.3711x10 ⁻¹¹
rs28457789	31247801	(T/G)	0.1212	-7641	1	1	G=T,A=G	6	NA	3.76142x10 ⁻⁰⁶	2.38057x10 ⁻¹¹
rs9468913	31244332	(C/T)	0.1212	-11110	1	1	G=C,A=T	7	NA	3.6746x10 ⁻⁰⁶	3.0757x10 ⁻¹¹
rs17198783	31256746	(T/C)	0.1212	1304	1	1	G=T,A=C	5	NA	3.94836x10 ⁻⁰⁶	4.19371x10 ⁻¹¹
rs35611056	31261956	(A/G)	0.1212	6514	1	1	G=A,A=G	7	NA	3.99833x10 ⁻⁰⁶	4.28072x10 ⁻¹¹
rs34187356	31261983	(T/C)	0.1212	6541	1	1	G=T,A=C	5	NA	3.99833x10 ⁻⁰⁶	4.28072x10 ⁻¹¹
rs56042166	31262024	(A/G)	0.1212	6582	1	1	G=A,A=G	5	NA	3.99833x10 ⁻⁰⁶	4.28072x10 ⁻¹¹
rs17192505	31265910	(T/G)	0.1212	10468	1	1	G=T,A=G	5	NA	4.00172x10 ⁻⁰⁶	4.31903x10 ⁻¹¹
rs56138398	31269299	(G/C)	0.1212	13857	1	1	G=G,A=C	5	NA	3.99833x10 ⁻⁰⁶	4.32352x10 ⁻¹¹
rs35196124	31261777	(A/T)	0.1212	6335	1	1	G=A,A=T	7	NA	3.99833x10 ⁻⁰⁶	4.32733x10 ⁻¹¹
rs35933419	31261781	(A/G)	0.1212	6339	1	1	G=A,A=G	7	NA	3.99833x10 ⁻⁰⁶	4.32733x10 ⁻¹¹
rs114265643	31261851	(C/T)	0.1212	6409	1	1	G=C,A=T	6	NA	3.99833x10 ⁻⁰⁶	4.32733x10 ⁻¹¹
rs187999352	31261887	(A/T)	0.1212	6445	1	1	G=A,A=T	6	NA	3.99833x10 ⁻⁰⁶	4.32733x10 ⁻¹¹
rs192233466	31261888	(T/A)	0.1212	6446	1	1	G=T,A=A	6	NA	3.99833x10 ⁻⁰⁶	4.32733x10 ⁻¹¹
rs34504767	31261492	(C/T)	0.1212	6050	1	1	G=C,A=T	3a	NA	3.99833x10 ⁻⁰⁶	4.32812x10 ⁻¹¹
rs115748458	31261570	(T/G)	0.1212	6128	1	1	G=T,A=G	7	NA	3.99833x10 ⁻⁰⁶	4.32812x10 ⁻¹¹

SNP Id	Position ^s	Alleles	MAF	Distance	Dprime	R ²	Correlated Alleles	RegulomeDB	Function	GWAS <i>P</i>	Replication <i>P</i> [#]
rs116134275	31261571	(T/C)	0.1212	6129	1	1	G=T,A=C	7	NA	3.99833x10 ⁻⁰⁶	4.32812x10 ⁻¹¹
rs35742578	31261645	(G/A)	0.1212	6203	1	1	G=G,A=A	7	NA	3.99833x10 ⁻⁰⁶	4.32812x10 ⁻¹¹
rs116647350	31268833	(G/A)	0.1212	13391	1	1	G=G,A=A	4	NA	3.99833x10 ⁻⁰⁶	4.33426x10 ⁻¹¹
rs12663075	31269256	(C/A)	0.1212	13814	1	1	G=C,A=A	5	NA	3.99833x10 ⁻⁰⁶	4.33811x10 ⁻¹¹
rs201641102	31267776	(A/G)	0.1212	12334	1	1	G=A,A=G	6	NA	3.99833x10 ⁻⁰⁶	4.33859x10 ⁻¹¹
rs115491491	31266465	(A/G)	0.1212	11023	1	1	G=A,A=G	7	NA	4.00002x10 ⁻⁰⁶	4.37064x10 ⁻¹¹
rs116364562	31266479	(G/C)	0.1212	11037	1	1	G=G,A=C	7	NA	4.00002x10 ⁻⁰⁶	4.37064x10 ⁻¹¹
rs114093160	31258371	(G/A)	0.1212	2929	1	1	G=G,A=A	7	NA	4.00562x10 ⁻⁰⁶	4.37174x10 ⁻¹¹
rs17192512	31265914	(A/G)	0.1212	10472	1	1	G=A,A=G	5	NA	4.00002x10 ⁻⁰⁶	4.37245x10 ⁻¹¹
rs17198860	31265875	(G/A)	0.1212	10433	1	1	G=G,A=A	5	NA	4.00002x10 ⁻⁰⁶	4.37294x10 ⁻¹¹
rs139795635	31266411	(-/A)	0.1212	10969	1	1	G=-,A=A	7	NA	4.00002x10 ⁻⁰⁶	4.37304x10 ⁻¹¹
rs16899178	31261137	(C/T)	0.1212	5695	1	1	G=C,A=T	2b	NA	3.99833x10 ⁻⁰⁶	4.37508x10 ⁻¹¹
rs138758697	31266310	(G/-)	0.1212	10868	1	1	G=G,A=-	.	NA	4.00002x10 ⁻⁰⁶	4.37559x10 ⁻¹¹
rs16899203	31266335	(T/C)	0.1212	10893	1	1	G=T,A=C	7	NA	4.00002x10 ⁻⁰⁶	4.37718x10 ⁻¹¹
rs17192491	31265788	(C/G)	0.1212	10346	1	1	G=C,A=G	5	NA	4.00002x10 ⁻⁰⁶	4.37889x10 ⁻¹¹
rs17198839	31265807	(A/C)	0.1212	10365	1	1	G=A,A=C	5	NA	4.00002x10 ⁻⁰⁶	4.37889x10 ⁻¹¹
rs17198818	31265695	(G/A)	0.1212	10253	1	1	G=G,A=A	7	NA	4.00139x10 ⁻⁰⁶	4.38258x10 ⁻¹¹
rs3828860	31265736	(C/T)	0.1212	10294	1	1	G=C,A=T	7	NA	4.00139x10 ⁻⁰⁶	4.3826x10 ⁻¹¹
rs17192470	31265743	(C/T)	0.1212	10301	1	1	G=C,A=T	5	NA	4.00275x10 ⁻⁰⁶	4.38339x10 ⁻¹¹
rs17198811	31265634	(C/T)	0.1212	10192	1	1	G=C,A=T	6	NA	4.00275x10 ⁻⁰⁶	4.38595x10 ⁻¹¹
rs115975714	31265242	(T/G)	0.1212	9800	1	1	G=T,A=G	7	NA	4.00617x10 ⁻⁰⁶	4.38807x10 ⁻¹¹
rs115219503	31262959	(T/C)	0.1212	7517	1	1	G=T,A=C	7	NA	3.99833x10 ⁻⁰⁶	4.38813x10 ⁻¹¹
rs114598080	31255442	(G/A)	0.1212	0	1	1	G=G,A=A	7	NA	3.9016x10 ⁻⁰⁶	4.39264x10 ⁻¹¹
rs114904826	31264960	(T/C)	0.1212	9518	1	1	G=T,A=C	7	NA	4.01097x10 ⁻⁰⁶	4.39264x10 ⁻¹¹
rs114770325	31264845	(T/C)	0.1212	9403	1	1	G=T,A=C	7	NA	4.01371x10 ⁻⁰⁶	4.39264x10 ⁻¹¹
rs115753074	31265168	(G/A)	0.1212	9726	1	1	G=G,A=A	6	NA	4.00754x10 ⁻⁰⁶	4.39324x10 ⁻¹¹
rs200436274	31264580	(C/-)	0.1212	9138	1	1	G=C,A=-	.	NA	4.01494x10 ⁻⁰⁶	4.39503x10 ⁻¹¹
.	31264583	(G/T)	0.1212	9141	1	1	G=G,A=T	7	.	4.01494x10 ⁻⁰⁶	4.39503x10 ⁻¹¹
rs115865502	31264178	(C/T)	0.1212	8736	1	1	G=C,A=T	6	NA	4.01408x10 ⁻⁰⁶	4.39582x10 ⁻¹¹

SNP Id	Position ^s	Alleles	MAF	Distance	Dprime	R ²	Correlated Alleles	RegulomeDB	Function	GWAS <i>P</i>	Replication <i>P</i> [#]
rs115700453	31264577	(T/C)	0.1212	9135	1	1	G=T,A=C	7	NA	4.01494x10 ⁻⁰⁶	4.39582x10 ⁻¹¹
rs115494471	31264408	(C/T)	0.1212	8966	1	1	G=C,A=T	7	NA	4.01494x10 ⁻⁰⁶	4.39583x10 ⁻¹¹
rs114973736	31264497	(T/C)	0.1212	9055	1	1	G=T,A=C	6	NA	4.01494x10 ⁻⁰⁶	4.39583x10 ⁻¹¹
rs115964138	31264512	(G/A)	0.1212	9070	1	1	G=G,A=A	6	NA	4.01494x10 ⁻⁰⁶	4.39583x10 ⁻¹¹
rs116334679	31264517	(T/C)	0.1212	9075	1	1	G=T,A=C	6	NA	4.01494x10 ⁻⁰⁶	4.39583x10 ⁻¹¹
rs114601085	31263548	(C/T)	0.1212	8106	1	1	G=C,A=T	7	NA	4.00583x10 ⁻⁰⁶	4.39742x10 ⁻¹¹
rs114294380	31263601	(T/G)	0.1212	8159	1	1	G=T,A=G	7	NA	4.00702x10 ⁻⁰⁶	4.39742x10 ⁻¹¹
rs115101855	31263482	(A/T)	0.1212	8040	1	1	G=A,A=T	6	NA	4.00447x10 ⁻⁰⁶	4.39742x10 ⁻¹¹
rs114016160	31263410	(G/A)	0.1212	7968	1	1	G=G,A=A	7	NA	4.00463x10 ⁻⁰⁶	4.39742x10 ⁻¹¹
rs114583506	31263801	(G/T)	0.1212	8359	1	1	G=G,A=T	7	NA	4.00927x10 ⁻⁰⁶	4.39742x10 ⁻¹¹
rs200307568	31263721	(G/T)	0.1212	8279	1	1	G=G,A=T	7	NA	4.0079x10 ⁻⁰⁶	4.39743x10 ⁻¹¹
rs116165038	31263852	(G/C)	0.1212	8410	1	1	G=G,A=C	6	NA	6.72289x10 ⁻⁰⁶	4.39803x10 ⁻¹¹
rs115973915	31263349	(C/A)	0.1212	7907	1	1	G=C,A=A	6	NA	4.00378x10 ⁻⁰⁶	4.39821x10 ⁻¹¹
rs115667045	31262717	(T/A)	0.1212	7275	1	1	G=T,A=A	5	NA	3.99833x10 ⁻⁰⁶	4.39982x10 ⁻¹¹
rs114899495	31262761	(C/T)	0.1212	7319	1	1	G=C,A=T	5	NA	3.99833x10 ⁻⁰⁶	4.39982x10 ⁻¹¹
rs116654277	31262769	(C/T)	0.1212	7327	1	1	G=C,A=T	5	NA	3.99833x10 ⁻⁰⁶	4.39982x10 ⁻¹¹
rs116405890	31262870	(C/T)	0.1212	7428	1	1	G=C,A=T	6	NA	3.99833x10 ⁻⁰⁶	4.39982x10 ⁻¹¹
rs189869162	31262677	(T/C)	0.1212	7235	1	1	G=T,A=C	5	NA	3.99833x10 ⁻⁰⁶	4.39983x10 ⁻¹¹
rs147841590	31259588	(A/-)	0.1212	4146	1	1	G=A,A=-	.	NA	4.00087x10 ⁻⁰⁶	4.40336x10 ⁻¹¹
rs114454776	31259605	(G/A)	0.1212	4163	1	1	G=G,A=A	6	NA	4.00087x10 ⁻⁰⁶	4.40336x10 ⁻¹¹
rs55993314	31261056	(C/T)	0.1212	5614	1	1	G=C,A=T	7	NA	3.99833x10 ⁻⁰⁶	4.40382x10 ⁻¹¹
rs56409019	31261358	(C/G)	0.1212	5916	1	1	G=C,A=G	4	NA	3.99833x10 ⁻⁰⁶	4.40383x10 ⁻¹¹
rs55793836	31261393	(C/T)	0.1212	5951	1	1	G=C,A=T	4	NA	3.99833x10 ⁻⁰⁶	4.40383x10 ⁻¹¹
rs116537416	31260633	(T/C)	0.1212	5191	1	1	G=T,A=C	6	NA	4.00002x10 ⁻⁰⁶	4.40383x10 ⁻¹¹
rs114489270	31260583	(T/C)	0.1212	5141	1	1	G=T,A=C	7	NA	4.00002x10 ⁻⁰⁶	4.40462x10 ⁻¹¹
rs116548532	31260594	(T/G)	0.1212	5152	1	1	G=T,A=G	7	NA	4.00002x10 ⁻⁰⁶	4.40462x10 ⁻¹¹
rs114601215	31260462	(C/G)	0.1212	5020	1	1	G=C,A=G	6	NA	4.00002x10 ⁻⁰⁶	4.40463x10 ⁻¹¹
rs35298376	31260040	(T/G)	0.1212	4598	1	1	G=T,A=G	6	NA	4.00087x10 ⁻⁰⁶	4.40463x10 ⁻¹¹
rs35389342	31260049	(T/C)	0.1212	4607	1	1	G=T,A=C	6	NA	4.00087x10 ⁻⁰⁶	4.40463x10 ⁻¹¹

SNP Id	Position ^s	Alleles	MAF	Distance	Dprime	R ²	Correlated Alleles	RegulomeDB	Function	GWAS <i>P</i>	Replication <i>P</i> [#]
rs35235581	31260105	(G/A)	0.1212	4663	1	1	G=G,A=A	7	NA	4.00087x10 ⁻⁰⁶	4.40463x10 ⁻¹¹
rs35626283	31260168	(-/T)	0.1212	4726	1	1	G=-,A=T	7	NA	4.00087x10 ⁻⁰⁶	4.40463x10 ⁻¹¹
rs114392121	31260185	(T/C)	0.1212	4743	1	1	G=T,A=C	7	NA	4.00087x10 ⁻⁰⁶	4.40463x10 ⁻¹¹
rs115042633	31260201	(T/A)	0.1212	4759	1	1	G=T,A=A	7	NA	4.00087x10 ⁻⁰⁶	4.40463x10 ⁻¹¹
rs117127791	31260398	(A/G)	0.1212	4956	1	1	G=A,A=G	6	NA	4.00087x10 ⁻⁰⁶	4.40463x10 ⁻¹¹
rs34505728	31260004	(C/A)	0.1212	4562	1	1	G=C,A=A	6	NA	4.00087x10 ⁻⁰⁶	4.40542x10 ⁻¹¹
rs35667233	31259269	(T/C)	0.1212	3827	1	1	G=T,A=C	6	NA	4.00087x10 ⁻⁰⁶	4.40544x10 ⁻¹¹
rs34115632	31259298	(A/G)	0.1212	3856	1	1	G=A,A=G	7	NA	4.00087x10 ⁻⁰⁶	4.40544x10 ⁻¹¹
rs36087596	31259299	(T/-)	0.1212	3857	1	1	G=T,A=-	.	NA	4.00087x10 ⁻⁰⁶	4.40544x10 ⁻¹¹
rs35401506	31259332	(T/C)	0.1212	3890	1	1	G=T,A=C	7	NA	4.00087x10 ⁻⁰⁶	4.40544x10 ⁻¹¹
rs36060788	31259338	(A/G)	0.1212	3896	1	1	G=A,A=G	7	NA	4.00087x10 ⁻⁰⁶	4.40544x10 ⁻¹¹
rs35870025	31259435	(C/T)	0.1212	3993	1	1	G=C,A=T	7	NA	4.00087x10 ⁻⁰⁶	4.40544x10 ⁻¹¹
rs34743644	31259443	(C/T)	0.1212	4001	1	1	G=C,A=T	7	NA	4.00087x10 ⁻⁰⁶	4.40544x10 ⁻¹¹
rs116506525	31259458	(T/C)	0.1212	4016	1	1	G=T,A=C	7	NA	4.00087x10 ⁻⁰⁶	4.40544x10 ⁻¹¹
rs116030808	31259495	(A/G)	0.1212	4053	1	1	G=A,A=G	7	NA	4.00087x10 ⁻⁰⁶	4.40544x10 ⁻¹¹
rs115175858	31259543	(T/C)	0.1212	4101	1	1	G=T,A=C	7	NA	4.00087x10 ⁻⁰⁶	4.40544x10 ⁻¹¹
rs115106318	31259704	(A/G)	0.1212	4262	1	1	G=A,A=G	7	NA	4.00087x10 ⁻⁰⁶	4.40544x10 ⁻¹¹
rs34332804	31259729	(G/C)	0.1212	4287	1	1	G=G,A=C	7	NA	4.00087x10 ⁻⁰⁶	4.40544x10 ⁻¹¹
rs34254374	31259834	(T/G)	0.1212	4392	1	1	G=T,A=G	7	NA	4.00087x10 ⁻⁰⁶	4.40544x10 ⁻¹¹
rs35206735	31259837	(G/A)	0.1212	4395	1	1	G=G,A=A	7	NA	4.00087x10 ⁻⁰⁶	4.40544x10 ⁻¹¹
rs114500903	31259869	(T/C)	0.1212	4427	1	1	G=T,A=C	7	NA	4.00087x10 ⁻⁰⁶	4.40544x10 ⁻¹¹
rs116452682	31259870	(G/A)	0.1212	4428	1	1	G=G,A=A	7	NA	4.00087x10 ⁻⁰⁶	4.40544x10 ⁻¹¹
rs34925694	31259955	(A/G)	0.1212	4513	1	1	G=A,A=G	7	NA	4.00087x10 ⁻⁰⁶	4.40544x10 ⁻¹¹
rs367893790	31258626	(ATAT/-)	0.1212	3184	1	1	G=ATAT,A=-	.	NA	3.99833x10 ⁻⁰⁶	4.40624x10 ⁻¹¹
rs78950083	31258986	(T/C)	0.1212	3544	1	1	G=T,A=C	5	NA	4.00087x10 ⁻⁰⁶	4.40624x10 ⁻¹¹
rs16899170	31259017	(T/C)	0.1212	3575	1	1	G=T,A=C	5	NA	4.00087x10 ⁻⁰⁶	4.40624x10 ⁻¹¹
rs115651636	31257533	(T/C)	0.1212	2091	1	1	G=T,A=C	7	NA	3.98147x10 ⁻⁰⁶	4.40703x10 ⁻¹¹
rs114110521	31257617	(G/A)	0.1212	2175	1	1	G=G,A=A	7	NA	3.98398x10 ⁻⁰⁶	4.40703x10 ⁻¹¹
rs116337797	31257422	(G/A)	0.1212	1980	1	1	G=G,A=A	5	NA	3.97645x10 ⁻⁰⁶	4.40705x10 ⁻¹¹

SNP Id	Position ^s	Alleles	MAF	Distance	Dprime	R ²	Correlated Alleles	RegulomeDB	Function	GWAS <i>P</i>	Replication <i>P</i> [#]
rs115545796	31258036	(A/C)	0.1212	2594	1	1	G=A,A=C	6	NA	3.98987x10 ⁻⁰⁶	4.40705x10 ⁻¹¹
rs182445956	31258046	(T/C)	0.1212	2604	1	1	G=T,A=C	6	NA	3.98987x10 ⁻⁰⁶	4.40705x10 ⁻¹¹
rs115504545	31257251	(A/G)	0.1212	1809	1	1	G=A,A=G	5	NA	3.96564x10 ⁻⁰⁶	4.40785x10 ⁻¹¹
rs115226524	31257120	(T/C)	0.1212	1678	1	1	G=T,A=C	7	NA	3.95656x10 ⁻⁰⁶	4.40866x10 ⁻¹¹
rs115482903	31257198	(G/A)	0.1212	1756	1	1	G=G,A=A	6	NA	3.96233x10 ⁻⁰⁶	4.40866x10 ⁻¹¹
rs116736925	31257229	(G/A)	0.1212	1787	1	1	G=G,A=A	7	NA	3.96399x10 ⁻⁰⁶	4.40866x10 ⁻¹¹
rs55918251	31255811	(A/G)	0.1212	369	1	1	G=A,A=G	6	NA	3.91308x10 ⁻⁰⁶	4.40947x10 ⁻¹¹
rs114015300	31256965	(C/A)	0.1212	1523	1	1	G=C,A=A	7	NA	3.95081x10 ⁻⁰⁶	4.40947x10 ⁻¹¹
rs115007911	31256982	(C/A)	0.1212	1540	1	1	G=C,A=A	7	NA	3.95163x10 ⁻⁰⁶	4.40947x10 ⁻¹¹
rs146303266	31257093	(-/TGTCTC)	0.1212	1651	1	1	G=-,A=TGTCTC	7	NA	3.95492x10 ⁻⁰⁶	4.40947x10 ⁻¹¹
rs17192421	31256693	(T/C)	0.1212	1251	1	1	G=T,A=C	5	NA	3.94602x10 ⁻⁰⁶	4.40948x10 ⁻¹¹
rs17198776	31256732	(C/T)	0.1212	1290	1	1	G=C,A=T	5	NA	3.94836x10 ⁻⁰⁶	4.40948x10 ⁻¹¹
rs56184612	31255523	(A/G)	0.1212	81	1	1	G=A,A=G	5	NA	3.90389x10 ⁻⁰⁶	4.41026x10 ⁻¹¹
rs56016471	31255555	(A/C)	0.1212	113	1	1	G=A,A=C	5	NA	3.90504x10 ⁻⁰⁶	4.41026x10 ⁻¹¹
rs55825863	31255465	(C/A)	0.1212	23	1	1	G=C,A=A	7	NA	3.9016x10 ⁻⁰⁶	4.41027x10 ⁻¹¹
rs17192393	31256065	(C/G)	0.1212	623	1	1	G=C,A=G	5	NA	3.92231x10 ⁻⁰⁶	4.41029x10 ⁻¹¹
rs57742463	31255210	(C/A)	0.1212	-232	1	1	G=C,A=A	5	NA	3.89245x10 ⁻⁰⁶	5.26505x10 ⁻¹¹
rs57599285	31255183	(C/T)	0.1212	-259	1	1	G=C,A=T	5	NA	3.89018x10 ⁻⁰⁶	5.2683x10 ⁻¹¹
rs199720990	31254972	(A/C)	0.1212	-470	1	1	G=A,A=C	5	NA	3.88336x10 ⁻⁰⁶	5.284x10 ⁻¹¹
rs55822325	31254691	(A/G)	0.1212	-751	1	1	G=A,A=G	5	NA	3.87316x10 ⁻⁰⁶	5.3097x10 ⁻¹¹
rs56328367	31254594	(T/C)	0.1212	-848	1	1	G=T,A=C	7	NA	3.87203x10 ⁻⁰⁶	5.32345x10 ⁻¹¹
rs58860177	31254485	(T/C)	0.1212	-957	1	1	G=T,A=C	7	NA	3.8664x10 ⁻⁰⁶	5.33195x10 ⁻¹¹
rs58022700	31254334	(C/T)	0.1212	-1108	1	1	G=C,A=T	5	NA	3.86303x10 ⁻⁰⁶	5.3448x10 ⁻¹¹
rs58410461	31254299	(A/C)	0.1212	-1143	1	1	G=A,A=C	5	NA	3.86191x10 ⁻⁰⁶	5.34815x10 ⁻¹¹
rs59217589	31254280	(T/A)	0.1212	-1162	1	1	G=T,A=A	5	NA	3.85852x10 ⁻⁰⁶	5.35205x10 ⁻¹¹
rs114798972	31253514	(C/T)	0.1212	-1928	1	1	G=C,A=T	3a	NA	3.83177x10 ⁻⁰⁶	5.42715x10 ⁻¹¹
rs114206206	31253468	(G/T)	0.1212	-1974	1	1	G=G,A=T	2c	NA	3.82846x10 ⁻⁰⁶	5.43405x10 ⁻¹¹
rs115699806	31252031	(A/G)	0.1212	-3411	1	1	G=A,A=G	5	NA	3.77713x10 ⁻⁰⁶	5.43885x10 ⁻¹¹

SNP Id	Position ^s	Alleles	MAF	Distance	Dprime	R ²	Correlated Alleles	RegulomeDB	Function	GWAS <i>P</i>	Replication <i>P</i> [#]
rs115805679	31264288	(T/C)	0.1212	8846	1	1	G=T,A=C	7	NA	3.89999x10 ⁻⁰⁶	5.4538x10 ⁻¹¹
rs115727572	31253034	(T/G)	0.1212	-2408	1	1	G=T,A=G	7	NA	3.80865x10 ⁻⁰⁶	5.48845x10 ⁻¹¹
rs116350468	31252951	(G/T)	0.1212	-2491	1	1	G=G,A=T	7	NA	3.80534x10 ⁻⁰⁶	5.5031x10 ⁻¹¹
rs116281893	31252527	(T/C)	0.1212	-2915	1	1	G=T,A=C	6	NA	3.79012x10 ⁻⁰⁶	5.5382x10 ⁻¹¹
rs115931507	31252406	(T/C)	0.1212	-3036	1	1	G=T,A=C	6	NA	3.78687x10 ⁻⁰⁶	5.54655x10 ⁻¹¹
rs114020623	31251962	(C/T)	0.1212	-3480	1	1	G=C,A=T	5	NA	3.77605x10 ⁻⁰⁶	5.58695x10 ⁻¹¹
rs115182712	31251954	(A/G)	0.1212	-3488	1	1	G=A,A=G	5	NA	3.77605x10 ⁻⁰⁶	5.58695x10 ⁻¹¹
rs115228090	31264284	(C/T)	0.1212	8842	1	1	G=C,A=T	7	NA	3.89798x10 ⁻⁰⁶	5.62565x10 ⁻¹¹
rs114612857	31250876	(C/G)	0.1212	-4566	1	1	G=C,A=G	6	NA	3.74927x10 ⁻⁰⁶	5.6673x10 ⁻¹¹
rs17198909	31266189	(A/T)	0.1162	10747	1	0.9529	G=A,A=T	6	NA	5.45889x10 ⁻⁰⁶	5.70035x10 ⁻¹¹
rs12662096	31242445	(T/C)	0.1212	-12997	1	1	G=T,A=C	5	NA	3.52123x10 ⁻⁰⁶	8.505x10 ⁻¹¹
rs17192498	31265887	(A/G)	0.1364	10445	1	0.8736	G=A,A=G	5	NA	6.55644x10 ⁻⁰⁶	1.37604x10 ⁻¹⁰
rs3915970	31269460	(T/C)	0.1212	14018	1	1	G=T,A=C	6	NA	5.15058x10 ⁻⁰⁶	2.82343x10 ⁻¹⁰
rs17192533	31266085	(C/G)	0.1212	10643	1	1	G=C,A=G	5	NA	5.13922x10 ⁻⁰⁶	2.87749x10 ⁻¹⁰
rs17198664	31248382	(C/T)	0.1212	-7060	1	1	G=C,A=T	7	NA	4.33799x10 ⁻⁰⁶	4.00321x10 ⁻¹⁰
rs17192281	31248075	(G/A)	0.1212	-7367	1	1	G=G,A=A	7	NA	4.26831x10 ⁻⁰⁶	4.16853x10 ⁻¹⁰
rs4713440	31150323	(C/A)	0.1313	-105119	0.952	0.827	G=C,A=A	6	NA	9.39967x10 ⁻⁰⁶	4.67131x10 ⁻¹⁰
rs9468884	31151319	(T/C)	0.1313	-104123	0.952	0.827	G=T,A=C	6	NA	9.45919x10 ⁻⁰⁶	4.68199x10 ⁻¹⁰
rs56178408	31150039	(C/T)	0.1313	-105403	0.952	0.827	G=C,A=T	7	NA	9.42962x10 ⁻⁰⁶	4.71539x10 ⁻¹⁰
rs9468886	31151573	(G/A)	0.1313	-103869	0.952	0.827	G=G,A=A	7	NA	9.45767x10 ⁻⁰⁶	4.75245x10 ⁻¹⁰
rs56332747	31152321	(G/A)	0.1313	-103121	0.952	0.827	G=G,A=A	7	NA	9.47286x10 ⁻⁰⁶	4.75571x10 ⁻¹⁰
rs9501351	31153126	(C/T)	0.1313	-102316	0.952	0.827	G=C,A=T	6	NA	9.49217x10 ⁻⁰⁶	4.75975x10 ⁻¹⁰
rs6913631	31152098	(A/C)	0.1313	-103344	0.952	0.827	G=A,A=C	6	NA	9.47041x10 ⁻⁰⁶	4.76474x10 ⁻¹⁰
rs9501506	31153573	(T/C)	0.1313	-101869	0.952	0.827	G=T,A=C	4	NA	9.49869x10 ⁻⁰⁶	4.76662x10 ⁻¹⁰
rs9501507	31153716	(T/C)	0.1313	-101726	0.952	0.827	G=T,A=C	4	NA	9.49891x10 ⁻⁰⁶	4.7744x10 ⁻¹⁰
rs73728779	31253605	(T/C)	0.1212	-1837	1	1	G=T,A=C	3a	NA	7.24496x10 ⁻⁰⁶	5.7844x10 ⁻¹⁰
rs17191040	31154206	(T/G)	0.1313	-101236	0.952	0.827	G=T,A=G	2c	NA	9.5077x10 ⁻⁰⁶	7.067x10 ⁻¹⁰
rs115737821	31154138	(C/G)	0.1313	-101304	0.952	0.827	G=C,A=G	4	NA	9.5077x10 ⁻⁰⁶	7.067x10 ⁻¹⁰
rs199987285	31154473	(-/TTG)	0.1313	-100969	0.952	0.827	G=-,A=TTG	3a	NA	9.51424x10 ⁻⁰⁶	7.0731x10 ⁻¹⁰

SNP Id	Position ^s	Alleles	MAF	Distance	Dprime	R ²	Correlated Alleles	RegulomeDB	Function	GWAS P	Replication P [#]
rs17197402	31154384	(G/A)	0.1313	-101058	0.952	0.827	G=G,A=A	2b	NA	9.51401x10 ⁻⁰⁶	7.07455x10 ⁻¹⁰
rs114240643	31108628	(A/G)	0.1162	-146814	1	0.9529	G=A,A=G	5	NA	9.02682x10 ⁻⁰⁶	8.44205x10 ⁻¹⁰
rs73728781	31253619	(C/T)	0.1212	-1823	1	1	G=C,A=T	4	NA	5.19599x10 ⁻⁰⁶	1.2662x10 ⁻⁰⁹
rs9500884	31165733	(C/T)	0.1111	-89709	1	0.9063	G=C,A=T	4	NA	9.4223x10 ⁻⁰⁶	1.92309x10 ⁻⁰⁹
rs140174668	31168842	(C/T)	0.1162	-86600	1	0.9529	G=C,A=T	6	NA	1.95821x10 ⁻⁰⁵	9.1384x10 ⁻¹⁰
rs17197422	31154447	(A/G)	0.1162	-100995	1	0.9529	G=A,A=G	4	NA	1.98368x10 ⁻⁰⁵	1.06455x10 ⁻⁰⁹
rs9468881	31150870	(C/T)	0.1162	-104572	1	0.9529	G=C,A=T	7	NA	1.97369x10 ⁻⁰⁵	1.09292x10 ⁻⁰⁹
rs1841	31130760	(A/G)	0.1162	-124682	1	0.9529	G=A,A=G	3a	NA	1.64469x10 ⁻⁰⁵	9.3271x10 ⁻¹⁰
rs12529697	31125407	(G/A)	0.1162	-130035	1	0.9529	G=G,A=A	5	NA	1.17501x10 ⁻⁰⁵	9.2295x10 ⁻¹⁰
rs56205037	31120768	(C/T)	0.1162	-134674	1	0.9529	G=C,A=T	5	NA	1.10119x10 ⁻⁰⁵	1.49721x10 ⁻⁰⁹
rs55898325	31120711	(C/A)	0.1162	-134731	1	0.9529	G=C,A=A	5	NA	1.12561x10 ⁻⁰⁵	8.67625x10 ⁻¹⁰
rs2027937	31116502	(C/T)	0.1162	-138940	1	0.9529	G=C,A=T	5	missense	1.00786x10 ⁻⁰⁵	8.37735x10 ⁻¹⁰
rs115320563	31188708	(C/T)	0.1111	-66734	1	0.9063	G=C,A=T	7	NA	2.34301x10 ⁻⁰⁵	1.34761x10 ⁻⁰⁹
rs9461662	31187103	(C/G)	0.1111	-68339	1	0.9063	G=C,A=G	5	NA	1.53515x10 ⁻⁰⁵	1.01152x10 ⁻⁰⁹
rs9501088	31185059	(T/G)	0.1111	-70383	1	0.9063	G=T,A=G	6	NA	1.43995x10 ⁻⁰⁵	1.00998x10 ⁻⁰⁹
rs9501084	31184900	(G/T)	0.1111	-70542	1	0.9063	G=G,A=T	7	NA	1.43727x10 ⁻⁰⁵	1.01193x10 ⁻⁰⁹
rs9501522	31184425	(G/A)	0.1111	-71017	1	0.9063	G=G,A=A	4	NA	1.52153x10 ⁻⁰⁵	1.01241x10 ⁻⁰⁹
rs80086978	31180470	(T/C)	0.1111	-74972	1	0.9063	G=T,A=C	6	NA	1.42257x10 ⁻⁰⁵	1.01323x10 ⁻⁰⁹
rs9461659	31175392	(G/A)	0.1111	-80050	1	0.9063	G=G,A=A	7	NA	1.28639x10 ⁻⁰⁵	1.01289x10 ⁻⁰⁹
rs28857280	31174810	(A/G)	0.1111	-80632	1	0.9063	G=A,A=G	5	NA	1.28639x10 ⁻⁰⁵	1.01243x10 ⁻⁰⁹
rs28744239	31174758	(G/C)	0.1111	-80684	1	0.9063	G=G,A=C	7	NA	1.28639x10 ⁻⁰⁵	4.22851x10 ⁻¹⁰
rs2394885	31174590	(G/C)	0.1111	-80852	1	0.9063	G=G,A=C	6	NA	1.28639x10 ⁻⁰⁵	4.22923x10 ⁻¹⁰
rs11489178	31174036	(G/A)	0.1111	-81406	1	0.9063	G=G,A=A	6	NA	1.26653x10 ⁻⁰⁵	5.0869x10 ⁻¹⁰
rs12660585	31173768	(A/G)	0.1111	-81674	1	0.9063	G=A,A=G	5	NA	1.28871x10 ⁻⁰⁵	4.21949x10 ⁻¹⁰
rs9263886	31172879	(A/T)	0.1111	-82563	1	0.9063	G=A,A=T	5	NA	1.28656x10 ⁻⁰⁵	4.22497x10 ⁻¹⁰
rs3887383	31172317	(G/A)	0.1111	-83125	1	0.9063	G=G,A=A	6	NA	1.10757x10 ⁻⁰⁵	8.83935x10 ⁻¹⁰
rs9263881	31171924	(A/G)	0.1111	-83518	1	0.9063	G=A,A=G	4	NA	0.000012814	4.27566x10 ⁻¹⁰
rs73728294	31170227	(A/G)	0.1111	-85215	1	0.9063	G=A,A=G	2b	NA	1.38521x10 ⁻⁰⁵	9.35565x10 ⁻¹⁰
rs9295961	31167498	(T/C)	0.1111	-87944	1	0.9063	G=T,A=C	5	NA	1.94713x10 ⁻⁰⁵	1.87753x10 ⁻⁰⁹

SNP Id	Position ^s	Alleles	MAF	Distance	Dprime	R ²	Correlated Alleles	RegulomeDB	Function	GWAS <i>P</i>	Replication <i>P</i> [#]
rs886389	31166887	(G/T)	0.1111	-88555	1	0.9063	G=G,A=T	5	NA	0.000019532	1.8745x10 ⁻⁰⁹
rs79278836	31166301	(C/T)	0.1111	-89141	1	0.9063	G=C,A=T	2b	NA	1.95808x10 ⁻⁰⁵	1.86502x10 ⁻⁰⁹
rs78429324	31166239	(C/T)	0.1111	-89203	1	0.9063	G=C,A=T	4	NA	0.000019589	1.85775x10 ⁻⁰⁹
rs78517503	31164906	(G/A)	0.1111	-90536	1	0.9063	G=G,A=A	4	NA	1.96998x10 ⁻⁰⁵	1.84636x10 ⁻⁰⁹
rs9501071	31164471	(C/G)	0.1111	-90971	1	0.9063	G=C,A=G	5	NA	0.000019737	1.8586x10 ⁻⁰⁹
rs9501070	31164224	(C/G)	0.1111	-91218	1	0.9063	G=C,A=G	3a	NA	1.97577x10 ⁻⁰⁵	1.85532x10 ⁻⁰⁹
rs9461657	31162648	(C/A)	0.1111	-92794	1	0.9063	G=C,A=A	5	NA	1.98535x10 ⁻⁰⁵	1.84613x10 ⁻⁰⁹
rs9468890	31161893	(T/A)	0.1111	-93549	1	0.9063	G=T,A=A	5	NA	1.98452x10 ⁻⁰⁵	2.2017x10 ⁻⁰⁹
rs55938644	31161856	(T/C)	0.1111	-93586	1	0.9063	G=T,A=C	7	NA	0.000019841	2.14865x10 ⁻⁰⁹
rs60851386	31161404	(C/T)	0.1111	-94038	1	0.9063	G=C,A=T	5	NA	0.000019841	2.20605x10 ⁻⁰⁹
rs115923462	31161000	(G/A)	0.1111	-94442	1	0.9063	G=G,A=A	5	NA	1.99045x10 ⁻⁰⁵	9.42925x10 ⁻¹⁰
rs9461653	31160553	(A/G)	0.1111	-94889	1	0.9063	G=A,A=G	4	NA	1.98326x10 ⁻⁰⁵	2.20663x10 ⁻⁰⁹
rs12529498	31160211	(A/G)	0.1111	-95231	1	0.9063	G=A,A=G	5	NA	1.98284x10 ⁻⁰⁵	2.18687x10 ⁻⁰⁹
rs28617578	31159522	(C/T)	0.1111	-95920	1	0.9063	G=C,A=T	6	NA	1.98159x10 ⁻⁰⁵	2.18939x10 ⁻⁰⁹
rs9295959	31159041	(G/A)	0.1111	-96401	1	0.9063	G=G,A=A	.	NA	0.000018979	1.92053x10 ⁻⁰⁹
.	31158884	(C/T)	0.1111	-96558	1	0.9063	G=C,A=T	7	.	2.02316x10 ⁻⁰⁵	2.14649x10 ⁻⁰⁹
rs368529702	31158882	(C/-)	0.1111	-96560	1	0.9063	G=C,A=-	.	NA	2.02316x10 ⁻⁰⁵	2.14649x10 ⁻⁰⁹
rs12527342	31158505	(T/C)	0.1111	-96937	1	0.9063	G=T,A=C	4	NA	1.98117x10 ⁻⁰⁵	2.20498x10 ⁻⁰⁹
rs60107636	31156698	(C/T)	0.1111	-98744	1	0.9063	G=C,A=T	7	NA	2.43001x10 ⁻⁰⁵	2.89518x10 ⁻⁰⁹
rs9468889	31155385	(T/G)	0.1111	-100057	1	0.9063	G=T,A=G	7	NA	1.97701x10 ⁻⁰⁵	2.19893x10 ⁻⁰⁹
rs9461652	31155187	(G/A)	0.1111	-100255	1	0.9063	G=G,A=A	5	NA	1.97576x10 ⁻⁰⁵	2.18631x10 ⁻⁰⁹
rs3208498	31154421	(C/T)	0.1111	-101021	1	0.9063	G=C,A=T	2b	NA	1.97369x10 ⁻⁰⁵	2.20071x10 ⁻⁰⁹
rs17197395	31154171	(A/G)	0.1111	-101271	1	0.9063	G=A,A=G	4	NA	1.97369x10 ⁻⁰⁵	2.20019x10 ⁻⁰⁹
rs17197375	31154040	(C/T)	0.1111	-101402	1	0.9063	G=C,A=T	2b	NA	1.97369x10 ⁻⁰⁵	2.25288x10 ⁻⁰⁹
rs11970124	31153916	(G/A)	0.1111	-101526	1	0.9063	G=G,A=A	2b	NA	1.96579x10 ⁻⁰⁵	2.22493x10 ⁻⁰⁹
rs375415483	31152886	(T/-)	0.1111	-102556	1	0.9063	G=T,A=-	.	NA	1.97039x10 ⁻⁰⁵	2.13455x10 ⁻⁰⁹
rs9501350	31152839	(C/T)	0.1111	-102603	1	0.9063	G=C,A=T	6	NA	1.97039x10 ⁻⁰⁵	2.24887x10 ⁻⁰⁹
rs9501505	31152734	(A/G)	0.1111	-102708	1	0.9063	G=A,A=G	7	NA	1.97039x10 ⁻⁰⁵	2.25473x10 ⁻⁰⁹
rs9468887	31151690	(C/G)	0.1111	-103752	1	0.9063	G=C,A=G	7	NA	1.96709x10 ⁻⁰⁵	2.2496x10 ⁻⁰⁹

SNP Id	Position ^{\$}	Alleles	MAF	Distance	Dprime	R ²	Correlated Alleles	RegulomeDB	Function	GWAS <i>P</i>	Replication <i>P</i> [#]
rs9468880	31150858	(G/A)	0.1111	-104584	1	0.9063	G=G,A=A	7	NA	1.96504x10 ⁻⁰⁵	2.26377x10 ⁻⁰⁹
rs4711258	31150383	(G/A)	0.1111	-105059	1	0.9063	G=G,A=A	7	NA	1.96381x10 ⁻⁰⁵	2.25141x10 ⁻⁰⁹
rs9501072	31164495	(G/A)	0.1162	-90947	0.9505	0.8609	G=G,A=A	5	NA	0.000017296	1.58476x10 ⁻⁰⁹
.	31154981	(A/G)	0.1061	-100461	1	0.8602	G=A,A=G	.	.	2.10874x10 ⁻⁰⁵	9.71975x10 ⁻⁰⁹
rs17191139	31170821	(A/T)	0.1212	-84621	0.9052	0.8193	G=A,A=T	2b	NA	1.78211x10 ⁻⁰⁵	1.1162x10 ⁻⁰⁹
rs35006917	31149015	(-/A)	0.1212	-106427	0.9052	0.8193	G=-,A=A	6	NA	1.78244x10 ⁻⁰⁵	2.84835x10 ⁻⁰⁸
rs11752301	31147619	(T/C)	0.1212	-107823	0.9052	0.8193	G=T,A=C	6	NA	1.82187x10 ⁻⁰⁵	3.01398x10 ⁻⁰⁸
rs1052986	31146439	(G/C)	0.1212	-109003	0.9052	0.8193	G=G,A=C	4	NA	1.81883x10 ⁻⁰⁵	3.02105x10 ⁻⁰⁸
rs192460891	31145000	(T/G)	0.1212	-110442	0.9052	0.8193	G=T,A=G	6	NA	0.000018208	3.07681x10 ⁻⁰⁸
rs375363217	31144887	(A/G)	0.1212	-110555	0.9052	0.8193	G=A,A=G	6	NA	0.000018208	3.09334x10 ⁻⁰⁸
rs3734872	31143804	(T/G)	0.1212	-111638	0.9052	0.8193	G=T,A=G	2b	NA	0.000018208	3.1296x10 ⁻⁰⁸
rs9468879	31143249	(C/A)	0.1212	-112193	0.9052	0.8193	G=C,A=A	5	NA	1.81162x10 ⁻⁰⁵	3.04347x10 ⁻⁰⁸
rs9461649	31143158	(C/T)	0.1212	-112284	0.9052	0.8193	G=C,A=T	5	NA	1.81126x10 ⁻⁰⁵	3.03536x10 ⁻⁰⁸
rs9468877	31142903	(G/A)	0.1212	-112539	0.9052	0.8193	G=G,A=A	4	NA	0.000018109	3.0537x10 ⁻⁰⁸
rs9461648	31142719	(T/C)	0.1212	-112723	0.9052	0.8193	G=T,A=C	3a	NA	1.82153x10 ⁻⁰⁵	3.03818x10 ⁻⁰⁸
rs2394969	31303131	(T/C)	0.1465	47689	1	0.8038	G=C,A=T	6	NA	0.0607003	2.30683x10 ⁻¹¹

^{\$} positions are given according to the hg19 genome build

[#] one-tailed test

Table S9. Single-Tissue eQTL for rs3187964 in the GTEx project

Gencode Id	Gene Symbol	Variant Id	SNP Id	P	NES	Tissue
ENSG00000179344.12	<i>HLA-DQB1</i>	6_32605207_C_G_b37	rs3187964	3.20x10 ⁻¹²⁴	-1.1	Muscle - Skeletal
ENSG00000179344.12	<i>HLA-DQB1</i>	6_32605207_C_G_b37	rs3187964	2.90x10 ⁻¹²²	-1.1	Skin - Sun Exposed (Lower leg)
ENSG00000179344.12	<i>HLA-DQB1</i>	6_32605207_C_G_b37	rs3187964	3.60x10 ⁻⁹⁶	-1	Skin - Not Sun Exposed (Suprapubic)
ENSG00000179344.12	<i>HLA-DQB1</i>	6_32605207_C_G_b37	rs3187964	3.10x10 ⁻⁹¹	-1	Adipose - Subcutaneous
ENSG00000179344.12	<i>HLA-DQB1</i>	6_32605207_C_G_b37	rs3187964	9.80x10 ⁻⁹¹	-0.8	Whole Blood
ENSG00000179344.12	<i>HLA-DQB1</i>	6_32605207_C_G_b37	rs3187964	7.20x10 ⁻⁸⁹	-0.98	Thyroid
ENSG00000179344.12	<i>HLA-DQB1</i>	6_32605207_C_G_b37	rs3187964	6.60x10 ⁻⁸⁸	-0.99	Nerve - Tibial
ENSG00000232629.4	<i>HLA-DQB2</i>	6_32605207_C_G_b37	rs3187964	1.60x10 ⁻⁸⁵	1.1	Nerve - Tibial
ENSG00000232629.4	<i>HLA-DQB2</i>	6_32605207_C_G_b37	rs3187964	3.60x10 ⁻⁸²	0.96	Whole Blood
ENSG00000179344.12	<i>HLA-DQB1</i>	6_32605207_C_G_b37	rs3187964	6.20x10 ⁻⁸¹	-0.97	Esophagus - Mucosa
ENSG00000179344.12	<i>HLA-DQB1</i>	6_32605207_C_G_b37	rs3187964	1.10x10 ⁻⁷⁸	-0.84	Artery - Tibial
ENSG00000232629.4	<i>HLA-DQB2</i>	6_32605207_C_G_b37	rs3187964	2.30x10 ⁻⁷⁸	0.91	Artery - Tibial
ENSG00000232629.4	<i>HLA-DQB2</i>	6_32605207_C_G_b37	rs3187964	2.40x10 ⁻⁷⁸	0.98	Lung
ENSG00000232629.4	<i>HLA-DQB2</i>	6_32605207_C_G_b37	rs3187964	2.40x10 ⁻⁷⁸	0.97	Thyroid
ENSG00000179344.12	<i>HLA-DQB1</i>	6_32605207_C_G_b37	rs3187964	2.50x10 ⁻⁷⁷	-1	Esophagus - Muscularis
ENSG00000232629.4	<i>HLA-DQB2</i>	6_32605207_C_G_b37	rs3187964	4.30x10 ⁻⁷⁷	0.97	Muscle - Skeletal
ENSG00000232629.4	<i>HLA-DQB2</i>	6_32605207_C_G_b37	rs3187964	1.70x10 ⁻⁷⁶	1.1	Adipose - Subcutaneous
ENSG00000179344.12	<i>HLA-DQB1</i>	6_32605207_C_G_b37	rs3187964	1.00x10 ⁻⁷¹	-0.97	Breast - Mammary Tissue
ENSG00000179344.12	<i>HLA-DQB1</i>	6_32605207_C_G_b37	rs3187964	4.60x10 ⁻⁷¹	-0.87	Lung
ENSG00000179344.12	<i>HLA-DQB1</i>	6_32605207_C_G_b37	rs3187964	5.40x10 ⁻⁷¹	-1	Adipose - Visceral (Omentum)
ENSG00000232629.4	<i>HLA-DQB2</i>	6_32605207_C_G_b37	rs3187964	1.60x10 ⁻⁶⁹	1.1	Esophagus - Muscularis
ENSG00000179344.12	<i>HLA-DQB1</i>	6_32605207_C_G_b37	rs3187964	9.20x10 ⁻⁶⁴	-1.1	Heart - Left Ventricle
ENSG00000196735.7	<i>HLA-DQA1</i>	6_32605207_C_G_b37	rs3187964	5.80x10 ⁻⁶²	-0.71	Lung
ENSG00000232629.4	<i>HLA-DQB2</i>	6_32605207_C_G_b37	rs3187964	8.20x10 ⁻⁵⁶	1	Adipose - Visceral (Omentum)
ENSG00000232629.4	<i>HLA-DQB2</i>	6_32605207_C_G_b37	rs3187964	3.90x10 ⁻⁵⁵	0.92	Stomach
ENSG00000179344.12	<i>HLA-DQB1</i>	6_32605207_C_G_b37	rs3187964	1.70x10 ⁻⁵⁴	-1.1	Heart - Atrial Appendage
ENSG00000232629.4	<i>HLA-DQB2</i>	6_32605207_C_G_b37	rs3187964	9.70x10 ⁻⁵⁴	0.97	Artery - Aorta
ENSG00000237541.3	<i>HLA-DQA2</i>	6_32605207_C_G_b37	rs3187964	3.10x10 ⁻⁵²	0.94	Whole Blood

Gencode Id	Gene Symbol	Variant Id	SNP Id	P	NES	Tissue
ENSG00000179344.12	<i>HLA-DQB1</i>	6_32605207_C_G_b37	rs3187964	1.90x10 ⁻⁵¹	-1	Esophagus - Gastroesophageal Junction
ENSG00000232629.4	<i>HLA-DQB2</i>	6_32605207_C_G_b37	rs3187964	6.10x10 ⁻⁵⁰	0.91	Colon - Transverse
ENSG00000237541.3	<i>HLA-DQA2</i>	6_32605207_C_G_b37	rs3187964	5.90x10 ⁻⁴⁹	0.87	Muscle - Skeletal
ENSG00000237541.3	<i>HLA-DQA2</i>	6_32605207_C_G_b37	rs3187964	3.10x10 ⁻⁴⁸	0.79	Skin - Sun Exposed (Lower leg)
ENSG00000237541.3	<i>HLA-DQA2</i>	6_32605207_C_G_b37	rs3187964	9.60x10 ⁻⁴⁸	0.93	Thyroid
ENSG00000232629.4	<i>HLA-DQB2</i>	6_32605207_C_G_b37	rs3187964	3.40x10 ⁻⁴⁶	1	Breast - Mammary Tissue
ENSG00000179344.12	<i>HLA-DQB1</i>	6_32605207_C_G_b37	rs3187964	5.80x10 ⁻⁴⁶	-1	Colon - Sigmoid
ENSG00000237541.3	<i>HLA-DQA2</i>	6_32605207_C_G_b37	rs3187964	2.70x10 ⁻⁴⁵	0.99	Adipose - Subcutaneous
ENSG00000237541.3	<i>HLA-DQA2</i>	6_32605207_C_G_b37	rs3187964	3.00x10 ⁻⁴⁵	0.95	Nerve - Tibial
ENSG00000232629.4	<i>HLA-DQB2</i>	6_32605207_C_G_b37	rs3187964	1.60x10 ⁻⁴⁴	1.1	Spleen
ENSG00000179344.12	<i>HLA-DQB1</i>	6_32605207_C_G_b37	rs3187964	2.20x10 ⁻⁴⁴	-0.85	Colon - Transverse
ENSG00000232629.4	<i>HLA-DQB2</i>	6_32605207_C_G_b37	rs3187964	1.00x10 ⁻⁴³	0.97	Pancreas
ENSG00000179344.12	<i>HLA-DQB1</i>	6_32605207_C_G_b37	rs3187964	1.10x10 ⁻⁴³	-1.1	Spleen
ENSG00000237541.3	<i>HLA-DQA2</i>	6_32605207_C_G_b37	rs3187964	1.80x10 ⁻⁴³	0.88	Lung
ENSG00000237541.3	<i>HLA-DQA2</i>	6_32605207_C_G_b37	rs3187964	7.00x10 ⁻⁴³	0.84	Artery - Tibial
ENSG00000179344.12	<i>HLA-DQB1</i>	6_32605207_C_G_b37	rs3187964	2.30x10 ⁻⁴²	-0.9	Stomach
ENSG00000232629.4	<i>HLA-DQB2</i>	6_32605207_C_G_b37	rs3187964	3.50x10 ⁻⁴²	0.96	Heart - Left Ventricle
ENSG00000179344.12	<i>HLA-DQB1</i>	6_32605207_C_G_b37	rs3187964	2.20x10 ⁻⁴¹	-0.99	Pancreas
ENSG00000237541.3	<i>HLA-DQA2</i>	6_32605207_C_G_b37	rs3187964	6.30x10 ⁻⁴¹	0.94	Esophagus - Muscularis
ENSG00000232629.4	<i>HLA-DQB2</i>	6_32605207_C_G_b37	rs3187964	9.90x10 ⁻⁴¹	1.1	Colon - Sigmoid
ENSG00000232629.4	<i>HLA-DQB2</i>	6_32605207_C_G_b37	rs3187964	4.00x10 ⁻⁴⁰	1.1	Esophagus - Gastroesophageal Junction
ENSG00000179344.12	<i>HLA-DQB1</i>	6_32605207_C_G_b37	rs3187964	1.20x10 ⁻³⁹	-1	Testis
ENSG00000237541.3	<i>HLA-DQA2</i>	6_32605207_C_G_b37	rs3187964	3.80x10 ⁻³⁹	0.78	Esophagus - Mucosa
ENSG00000232629.4	<i>HLA-DQB2</i>	6_32605207_C_G_b37	rs3187964	3.70x10 ⁻³⁷	0.89	Heart - Atrial Appendage
ENSG00000196735.7	<i>HLA-DQA1</i>	6_32605207_C_G_b37	rs3187964	3.50x10 ⁻³⁶	-0.36	Whole Blood
ENSG00000179344.12	<i>HLA-DQB1</i>	6_32605207_C_G_b37	rs3187964	2.80x10 ⁻³⁵	-0.73	Artery - Aorta
ENSG00000232629.4	<i>HLA-DQB2</i>	6_32605207_C_G_b37	rs3187964	6.90x10 ⁻³⁵	1.1	Cells - EBV-transformed lymphocytes
ENSG00000237541.3	<i>HLA-DQA2</i>	6_32605207_C_G_b37	rs3187964	2.70x10 ⁻³³	0.95	Adipose - Visceral (Omentum)
ENSG00000232629.4	<i>HLA-DQB2</i>	6_32605207_C_G_b37	rs3187964	2.30x10 ⁻³²	0.99	Testis
ENSG00000237541.3	<i>HLA-DQA2</i>	6_32605207_C_G_b37	rs3187964	7.00x10 ⁻³²	0.84	Colon - Transverse

Gencode Id	Gene Symbol	Variant Id	SNP Id	P	NES	Tissue
ENSG00000196735.7	<i>HLA-DQA1</i>	6_32605207_C_G_b37	rs3187964	2.40x10 ⁻³¹	-0.52	Muscle - Skeletal
ENSG00000237541.3	<i>HLA-DQA2</i>	6_32605207_C_G_b37	rs3187964	4.40x10 ⁻³¹	0.66	Skin - Not Sun Exposed (Suprapubic)
ENSG00000237541.3	<i>HLA-DQA2</i>	6_32605207_C_G_b37	rs3187964	7.60x10 ⁻³¹	0.88	Artery - Aorta
ENSG00000179344.12	<i>HLA-DQB1</i>	6_32605207_C_G_b37	rs3187964	1.90x10 ⁻³⁰	-0.87	Brain - Caudate (basal ganglia)
ENSG00000237541.3	<i>HLA-DQA2</i>	6_32605207_C_G_b37	rs3187964	2.30x10 ⁻³⁰	0.95	Breast - Mammary Tissue
ENSG00000196735.7	<i>HLA-DQA1</i>	6_32605207_C_G_b37	rs3187964	3.40x10 ⁻³⁰	-0.52	Thyroid
ENSG00000179344.12	<i>HLA-DQB1</i>	6_32605207_C_G_b37	rs3187964	9.10x10 ⁻³⁰	-1	Cells - EBV-transformed lymphocytes
ENSG00000196735.7	<i>HLA-DQA1</i>	6_32605207_C_G_b37	rs3187964	1.10x10 ⁻²⁹	-0.52	Nerve - Tibial
ENSG00000223534.1	<i>HLA-DQB1-AS1</i>	6_32605207_C_G_b37	rs3187964	2.10x10 ⁻²⁹	-0.64	Muscle - Skeletal
ENSG00000232629.4	<i>HLA-DQB2</i>	6_32605207_C_G_b37	rs3187964	5.50x10 ⁻²⁹	1	Pituitary
ENSG00000196735.7	<i>HLA-DQA1</i>	6_32605207_C_G_b37	rs3187964	5.90x10 ⁻²⁹	-0.49	Esophagus - Mucosa
ENSG00000237541.3	<i>HLA-DQA2</i>	6_32605207_C_G_b37	rs3187964	1.90x10 ⁻²⁸	0.79	Stomach
ENSG00000196735.7	<i>HLA-DQA1</i>	6_32605207_C_G_b37	rs3187964	4.00x10 ⁻²⁸	-0.65	Esophagus - Muscularis
ENSG00000229391.3	<i>HLA-DRB6</i>	6_32605207_C_G_b37	rs3187964	5.00x10 ⁻²⁸	0.72	Nerve - Tibial
ENSG00000232629.4	<i>HLA-DQB2</i>	6_32605207_C_G_b37	rs3187964	1.20x10 ⁻²⁷	0.92	Artery - Coronary
ENSG00000229391.3	<i>HLA-DRB6</i>	6_32605207_C_G_b37	rs3187964	1.20x10 ⁻²⁷	0.66	Skin - Sun Exposed (Lower leg)
ENSG00000229391.3	<i>HLA-DRB6</i>	6_32605207_C_G_b37	rs3187964	1.50x10 ⁻²⁷	0.64	Muscle - Skeletal
ENSG00000196735.7	<i>HLA-DQA1</i>	6_32605207_C_G_b37	rs3187964	2.50x10 ⁻²⁷	-0.43	Artery - Tibial
ENSG00000229391.3	<i>HLA-DRB6</i>	6_32605207_C_G_b37	rs3187964	1.50x10 ⁻²⁶	0.65	Esophagus - Mucosa
ENSG00000229391.3	<i>HLA-DRB6</i>	6_32605207_C_G_b37	rs3187964	1.60x10 ⁻²⁶	0.77	Esophagus - Muscularis
ENSG00000179344.12	<i>HLA-DQB1</i>	6_32605207_C_G_b37	rs3187964	4.90x10 ⁻²⁶	-0.94	Prostate
ENSG00000179344.12	<i>HLA-DQB1</i>	6_32605207_C_G_b37	rs3187964	1.70x10 ⁻²⁵	-0.79	Artery - Coronary
ENSG00000237541.3	<i>HLA-DQA2</i>	6_32605207_C_G_b37	rs3187964	2.20x10 ⁻²⁵	1	Cells - EBV-transformed lymphocytes
ENSG00000179344.12	<i>HLA-DQB1</i>	6_32605207_C_G_b37	rs3187964	2.90x10 ⁻²⁵	-0.87	Brain - Cerebellum
ENSG00000232629.4	<i>HLA-DQB2</i>	6_32605207_C_G_b37	rs3187964	7.10x10 ⁻²⁵	1	Adrenal Gland
ENSG00000179344.12	<i>HLA-DQB1</i>	6_32605207_C_G_b37	rs3187964	1.60x10 ⁻²⁴	-0.94	Brain - Putamen (basal ganglia)
ENSG00000179344.12	<i>HLA-DQB1</i>	6_32605207_C_G_b37	rs3187964	3.60x10 ⁻²⁴	-0.85	Liver
ENSG00000232629.4	<i>HLA-DQB2</i>	6_32605207_C_G_b37	rs3187964	6.50x10 ⁻²⁴	0.78	Small Intestine - Terminal Ileum
ENSG00000179344.12	<i>HLA-DQB1</i>	6_32605207_C_G_b37	rs3187964	6.50x10 ⁻²⁴	-0.92	Pituitary
ENSG00000229391.3	<i>HLA-DRB6</i>	6_32605207_C_G_b37	rs3187964	8.90x10 ⁻²⁴	0.63	Lung

Gencode Id	Gene Symbol	Variant Id	SNP Id	P	NES	Tissue
ENSG00000196735.7	<i>HLA-DQA1</i>	6_32605207_C_G_b37	rs3187964	3.00x10 ⁻²³	-0.5	Skin - Sun Exposed (Lower leg)
ENSG00000179344.12	<i>HLA-DQB1</i>	6_32605207_C_G_b37	rs3187964	3.10x10 ⁻²³	-1	Vagina
ENSG00000237541.3	<i>HLA-DQA2</i>	6_32605207_C_G_b37	rs3187964	3.80x10 ⁻²³	0.92	Esophagus - Gastroesophageal Junction
ENSG00000237541.3	<i>HLA-DQA2</i>	6_32605207_C_G_b37	rs3187964	3.90x10 ⁻²³	0.92	Colon - Sigmoid
ENSG00000179344.12	<i>HLA-DQB1</i>	6_32605207_C_G_b37	rs3187964	6.70x10 ⁻²³	-0.84	Brain - Hippocampus
ENSG00000229391.3	<i>HLA-DRB6</i>	6_32605207_C_G_b37	rs3187964	7.10x10 ⁻²³	0.62	Stomach
ENSG00000179344.12	<i>HLA-DQB1</i>	6_32605207_C_G_b37	rs3187964	2.10x10 ⁻²²	-1	Brain - Cerebellar Hemisphere
ENSG00000229391.3	<i>HLA-DRB6</i>	6_32605207_C_G_b37	rs3187964	2.30x10 ⁻²²	0.71	Adipose - Subcutaneous
ENSG00000232629.4	<i>HLA-DQB2</i>	6_32605207_C_G_b37	rs3187964	2.40x10 ⁻²²	0.83	Brain - Caudate (basal ganglia)
ENSG00000179344.12	<i>HLA-DQB1</i>	6_32605207_C_G_b37	rs3187964	3.10x10 ⁻²²	-1	Uterus
ENSG00000179344.12	<i>HLA-DQB1</i>	6_32605207_C_G_b37	rs3187964	4.20x10 ⁻²²	-0.81	Small Intestine - Terminal Ileum
ENSG00000229391.3	<i>HLA-DRB6</i>	6_32605207_C_G_b37	rs3187964	4.40x10 ⁻²²	0.63	Thyroid
ENSG00000223534.1	<i>HLA-DQB1-AS1</i>	6_32605207_C_G_b37	rs3187964	5.80x10 ⁻²²	-0.53	Adipose - Visceral (Omentum)
ENSG00000196735.7	<i>HLA-DQA1</i>	6_32605207_C_G_b37	rs3187964	9.60x10 ⁻²²	-0.66	Heart - Atrial Appendage
ENSG00000237541.3	<i>HLA-DQA2</i>	6_32605207_C_G_b37	rs3187964	2.00x10 ⁻²¹	0.79	Heart - Left Ventricle
ENSG00000196735.7	<i>HLA-DQA1</i>	6_32605207_C_G_b37	rs3187964	2.70x10 ⁻²¹	-0.55	Adipose - Visceral (Omentum)
ENSG00000223534.1	<i>HLA-DQB1-AS1</i>	6_32605207_C_G_b37	rs3187964	3.20x10 ⁻²¹	-0.48	Skin - Sun Exposed (Lower leg)
ENSG00000196735.7	<i>HLA-DQA1</i>	6_32605207_C_G_b37	rs3187964	3.40x10 ⁻²¹	-0.74	Esophagus - Gastroesophageal Junction
ENSG00000237541.3	<i>HLA-DQA2</i>	6_32605207_C_G_b37	rs3187964	3.50x10 ⁻²¹	0.76	Pancreas
ENSG00000223534.1	<i>HLA-DQB1-AS1</i>	6_32605207_C_G_b37	rs3187964	3.70x10 ⁻²¹	-0.39	Whole Blood
ENSG00000179344.12	<i>HLA-DQB1</i>	6_32605207_C_G_b37	rs3187964	3.90x10 ⁻²¹	-0.89	Brain - Nucleus accumbens (basal ganglia)
ENSG00000196735.7	<i>HLA-DQA1</i>	6_32605207_C_G_b37	rs3187964	4.30x10 ⁻²¹	-0.64	Heart - Left Ventricle
ENSG00000196126.6	<i>HLA-DRB1</i>	6_32605207_C_G_b37	rs3187964	6.50x10 ⁻²¹	-0.36	Skin - Sun Exposed (Lower leg)
ENSG00000196126.6	<i>HLA-DRB1</i>	6_32605207_C_G_b37	rs3187964	1.20x10 ⁻²⁰	-0.36	Lung
ENSG00000229391.3	<i>HLA-DRB6</i>	6_32605207_C_G_b37	rs3187964	1.80x10 ⁻²⁰	0.72	Heart - Left Ventricle
ENSG00000196735.7	<i>HLA-DQA1</i>	6_32605207_C_G_b37	rs3187964	2.90x10 ⁻²⁰	-0.62	Pancreas
ENSG00000229391.3	<i>HLA-DRB6</i>	6_32605207_C_G_b37	rs3187964	2.90x10 ⁻²⁰	0.55	Whole Blood
ENSG00000232629.4	<i>HLA-DQB2</i>	6_32605207_C_G_b37	rs3187964	3.30x10 ⁻²⁰	1	Brain - Hypothalamus
ENSG00000232629.4	<i>HLA-DQB2</i>	6_32605207_C_G_b37	rs3187964	4.70x10 ⁻²⁰	1.1	Ovary
ENSG00000223534.1	<i>HLA-DQB1-AS1</i>	6_32605207_C_G_b37	rs3187964	5.30x10 ⁻²⁰	-0.4	Lung

Gencode Id	Gene Symbol	Variant Id	SNP Id	P	NES	Tissue
ENSG00000232629.4	<i>HLA-DQB2</i>	6_32605207_C_G_b37	rs3187964	7.20x10 ⁻²⁰	0.92	Prostate
ENSG00000237541.3	<i>HLA-DQA2</i>	6_32605207_C_G_b37	rs3187964	1.20x10 ⁻¹⁹	0.95	Prostate
ENSG00000229391.3	<i>HLA-DRB6</i>	6_32605207_C_G_b37	rs3187964	1.40x10 ⁻¹⁹	0.62	Artery - Aorta
ENSG00000196735.7	<i>HLA-DQA1</i>	6_32605207_C_G_b37	rs3187964	1.60x10 ⁻¹⁹	-0.46	Skin - Not Sun Exposed (Suprapubic)
ENSG00000237541.3	<i>HLA-DQA2</i>	6_32605207_C_G_b37	rs3187964	1.90x10 ⁻¹⁹	0.86	Spleen
ENSG00000229391.3	<i>HLA-DRB6</i>	6_32605207_C_G_b37	rs3187964	2.70x10 ⁻¹⁹	0.65	Colon - Transverse
ENSG00000237541.3	<i>HLA-DQA2</i>	6_32605207_C_G_b37	rs3187964	3.50x10 ⁻¹⁹	0.92	Small Intestine - Terminal Ileum
ENSG00000223534.1	<i>HLA-DQB1-AS1</i>	6_32605207_C_G_b37	rs3187964	4.10x10 ⁻¹⁹	-0.52	Adipose - Subcutaneous
ENSG00000179344.12	<i>HLA-DQB1</i>	6_32605207_C_G_b37	rs3187964	4.30x10 ⁻¹⁹	-0.86	Brain - Hypothalamus
ENSG00000223534.1	<i>HLA-DQB1-AS1</i>	6_32605207_C_G_b37	rs3187964	4.80x10 ⁻¹⁹	-0.45	Esophagus - Mucosa
ENSG00000229391.3	<i>HLA-DRB6</i>	6_32605207_C_G_b37	rs3187964	5.10x10 ⁻¹⁹	0.62	Skin - Not Sun Exposed (Suprapubic)
ENSG00000237541.3	<i>HLA-DQA2</i>	6_32605207_C_G_b37	rs3187964	5.70x10 ⁻¹⁹	0.76	Heart - Atrial Appendage
ENSG00000196126.6	<i>HLA-DRB1</i>	6_32605207_C_G_b37	rs3187964	1.10x10 ⁻¹⁸	-0.34	Muscle - Skeletal
ENSG00000229391.3	<i>HLA-DRB6</i>	6_32605207_C_G_b37	rs3187964	2.10x10 ⁻¹⁸	0.47	Artery - Tibial
ENSG00000237541.3	<i>HLA-DQA2</i>	6_32605207_C_G_b37	rs3187964	2.70x10 ⁻¹⁸	0.88	Pituitary
ENSG00000232629.4	<i>HLA-DQB2</i>	6_32605207_C_G_b37	rs3187964	2.70x10 ⁻¹⁸	0.84	Brain - Hippocampus
ENSG00000196126.6	<i>HLA-DRB1</i>	6_32605207_C_G_b37	rs3187964	4.10x10 ⁻¹⁸	-0.39	Thyroid
ENSG00000237541.3	<i>HLA-DQA2</i>	6_32605207_C_G_b37	rs3187964	4.60x10 ⁻¹⁸	0.78	Testis
ENSG00000229391.3	<i>HLA-DRB6</i>	6_32605207_C_G_b37	rs3187964	6.90x10 ⁻¹⁸	0.65	Adipose - Visceral (Omentum)
ENSG00000179344.12	<i>HLA-DQB1</i>	6_32605207_C_G_b37	rs3187964	7.50x10 ⁻¹⁸	-0.95	Brain - Substantia nigra
ENSG00000232629.4	<i>HLA-DQB2</i>	6_32605207_C_G_b37	rs3187964	1.40x10 ⁻¹⁷	0.98	Uterus
ENSG00000179344.12	<i>HLA-DQB1</i>	6_32605207_C_G_b37	rs3187964	1.90x10 ⁻¹⁷	-0.85	Brain - Spinal cord (cervical c-1)
ENSG00000196735.7	<i>HLA-DQA1</i>	6_32605207_C_G_b37	rs3187964	2.90x10 ⁻¹⁷	-0.5	Breast - Mammary Tissue
ENSG00000232629.4	<i>HLA-DQB2</i>	6_32605207_C_G_b37	rs3187964	3.90x10 ⁻¹⁷	0.83	Liver
ENSG00000223534.1	<i>HLA-DQB1-AS1</i>	6_32605207_C_G_b37	rs3187964	4.30x10 ⁻¹⁷	-0.51	Heart - Atrial Appendage
ENSG00000179344.12	<i>HLA-DQB1</i>	6_32605207_C_G_b37	rs3187964	8.10x10 ⁻¹⁷	-0.81	Brain - Amygdala
ENSG00000196735.7	<i>HLA-DQA1</i>	6_32605207_C_G_b37	rs3187964	1.30x10 ⁻¹⁶	-0.41	Adipose - Subcutaneous
ENSG00000196126.6	<i>HLA-DRB1</i>	6_32605207_C_G_b37	rs3187964	3.30x10 ⁻¹⁶	-0.35	Skin - Not Sun Exposed (Suprapubic)
ENSG00000223534.1	<i>HLA-DQB1-AS1</i>	6_32605207_C_G_b37	rs3187964	3.40x10 ⁻¹⁶	-0.38	Thyroid
ENSG00000223534.1	<i>HLA-DQB1-AS1</i>	6_32605207_C_G_b37	rs3187964	3.90x10 ⁻¹⁶	-0.46	Artery - Aorta

Gencode Id	Gene Symbol	Variant Id	SNP Id	P	NES	Tissue
ENSG00000237541.3	<i>HLA-DQA2</i>	6_32605207_C_G_b37	rs3187964	6.00x10 ⁻¹⁶	0.84	Brain - Hippocampus
ENSG00000237541.3	<i>HLA-DQA2</i>	6_32605207_C_G_b37	rs3187964	1.10x10 ⁻¹⁵	0.82	Brain - Nucleus accumbens (basal ganglia)
ENSG00000229391.3	<i>HLA-DRB6</i>	6_32605207_C_G_b37	rs3187964	1.90x10 ⁻¹⁵	0.61	Breast - Mammary Tissue
ENSG00000196735.7	<i>HLA-DQA1</i>	6_32605207_C_G_b37	rs3187964	2.40x10 ⁻¹⁵	-0.57	Colon - Sigmoid
ENSG00000223534.1	<i>HLA-DQB1-AS1</i>	6_32605207_C_G_b37	rs3187964	2.40x10 ⁻¹⁵	-0.36	Artery - Tibial
ENSG00000237541.3	<i>HLA-DQA2</i>	6_32605207_C_G_b37	rs3187964	3.10x10 ⁻¹⁵	0.79	Brain - Caudate (basal ganglia)
ENSG00000223534.1	<i>HLA-DQB1-AS1</i>	6_32605207_C_G_b37	rs3187964	3.10x10 ⁻¹⁵	-0.4	Nerve - Tibial
ENSG00000196735.7	<i>HLA-DQA1</i>	6_32605207_C_G_b37	rs3187964	3.20x10 ⁻¹⁵	-0.43	Stomach
ENSG00000229391.3	<i>HLA-DRB6</i>	6_32605207_C_G_b37	rs3187964	6.70x10 ⁻¹⁵	0.7	Esophagus - Gastroesophageal Junction
ENSG00000223534.1	<i>HLA-DQB1-AS1</i>	6_32605207_C_G_b37	rs3187964	8.10x10 ⁻¹⁵	-0.53	Breast - Mammary Tissue
ENSG00000232629.4	<i>HLA-DQB2</i>	6_32605207_C_G_b37	rs3187964	8.60x10 ⁻¹⁵	0.87	Brain - Cortex
ENSG00000237541.3	<i>HLA-DQA2</i>	6_32605207_C_G_b37	rs3187964	9.20x10 ⁻¹⁵	0.87	Adrenal Gland
ENSG00000232629.4	<i>HLA-DQB2</i>	6_32605207_C_G_b37	rs3187964	1.40x10 ⁻¹⁴	0.87	Brain - Anterior cingulate cortex (BA24)
ENSG00000232629.4	<i>HLA-DQB2</i>	6_32605207_C_G_b37	rs3187964	1.50x10 ⁻¹⁴	0.84	Brain - Substantia nigra
ENSG00000232629.4	<i>HLA-DQB2</i>	6_32605207_C_G_b37	rs3187964	3.20x10 ⁻¹⁴	0.79	Brain - Putamen (basal ganglia)
ENSG00000179344.12	<i>HLA-DQB1</i>	6_32605207_C_G_b37	rs3187964	3.50x10 ⁻¹⁴	-0.93	Minor Salivary Gland
ENSG00000232629.4	<i>HLA-DQB2</i>	6_32605207_C_G_b37	rs3187964	7.50x10 ⁻¹⁴	0.72	Brain - Nucleus accumbens (basal ganglia)
ENSG00000237541.3	<i>HLA-DQA2</i>	6_32605207_C_G_b37	rs3187964	1.10x10 ⁻¹³	0.79	Artery - Coronary
ENSG00000229391.3	<i>HLA-DRB6</i>	6_32605207_C_G_b37	rs3187964	1.10x10 ⁻¹³	0.6	Testis
ENSG00000196735.7	<i>HLA-DQA1</i>	6_32605207_C_G_b37	rs3187964	1.30x10 ⁻¹³	-0.39	Artery - Aorta
ENSG00000196126.6	<i>HLA-DRB1</i>	6_32605207_C_G_b37	rs3187964	1.30x10 ⁻¹³	-0.24	Artery - Tibial
ENSG00000229391.3	<i>HLA-DRB6</i>	6_32605207_C_G_b37	rs3187964	1.40x10 ⁻¹³	0.7	Colon - Sigmoid
ENSG00000196735.7	<i>HLA-DQA1</i>	6_32605207_C_G_b37	rs3187964	1.50x10 ⁻¹³	-0.38	Colon - Transverse
ENSG00000229391.3	<i>HLA-DRB6</i>	6_32605207_C_G_b37	rs3187964	3.20x10 ⁻¹³	0.61	Heart - Atrial Appendage
ENSG00000229391.3	<i>HLA-DRB6</i>	6_32605207_C_G_b37	rs3187964	5.10x10 ⁻¹³	0.8	Cells - EBV-transformed lymphocytes
ENSG00000223534.1	<i>HLA-DQB1-AS1</i>	6_32605207_C_G_b37	rs3187964	7.20x10 ⁻¹³	-0.35	Skin - Not Sun Exposed (Suprapubic)
ENSG00000232629.4	<i>HLA-DQB2</i>	6_32605207_C_G_b37	rs3187964	1.20x10 ⁻¹²	0.91	Brain - Frontal Cortex (BA9)
ENSG00000179344.12	<i>HLA-DQB1</i>	6_32605207_C_G_b37	rs3187964	1.40x10 ⁻¹²	-0.71	Ovary
ENSG00000237541.3	<i>HLA-DQA2</i>	6_32605207_C_G_b37	rs3187964	1.90x10 ⁻¹²	0.88	Brain - Frontal Cortex (BA9)
ENSG00000232629.4	<i>HLA-DQB2</i>	6_32605207_C_G_b37	rs3187964	2.90x10 ⁻¹²	0.73	Brain - Cerebellum

Gencode Id	Gene Symbol	Variant Id	SNP Id	P	NES	Tissue
ENSG00000196301.3	<i>HLA-DRB9</i>	6_32605207_C_G_b37	rs3187964	3.10x10 ⁻¹²	0.43	Lung
ENSG00000223534.1	<i>HLA-DQB1-AS1</i>	6_32605207_C_G_b37	rs3187964	3.60x10 ⁻¹²	-0.67	Liver
ENSG00000237541.3	<i>HLA-DQA2</i>	6_32605207_C_G_b37	rs3187964	4.50x10 ⁻¹²	0.9	Ovary
ENSG00000232629.4	<i>HLA-DQB2</i>	6_32605207_C_G_b37	rs3187964	7.60x10 ⁻¹²	0.34	Esophagus - Mucosa
ENSG00000237541.3	<i>HLA-DQA2</i>	6_32605207_C_G_b37	rs3187964	7.70x10 ⁻¹²	0.8	Brain - Cortex
ENSG00000232629.4	<i>HLA-DQB2</i>	6_32605207_C_G_b37	rs3187964	7.80x10 ⁻¹²	0.88	Minor Salivary Gland
ENSG00000196126.6	<i>HLA-DRB1</i>	6_32605207_C_G_b37	rs3187964	8.30x10 ⁻¹²	-0.26	Esophagus - Mucosa
ENSG00000237541.3	<i>HLA-DQA2</i>	6_32605207_C_G_b37	rs3187964	9.40x10 ⁻¹²	0.82	Brain - Hypothalamus
ENSG00000237541.3	<i>HLA-DQA2</i>	6_32605207_C_G_b37	rs3187964	1.10x10 ⁻¹¹	0.91	Uterus
ENSG00000196735.7	<i>HLA-DQA1</i>	6_32605207_C_G_b37	rs3187964	1.10x10 ⁻¹¹	-0.49	Spleen
ENSG00000179344.12	<i>HLA-DQB1</i>	6_32605207_C_G_b37	rs3187964	1.10x10 ⁻¹¹	-0.65	Adrenal Gland
ENSG00000229391.3	<i>HLA-DRB6</i>	6_32605207_C_G_b37	rs3187964	1.40x10 ⁻¹¹	0.54	Pancreas
ENSG00000196126.6	<i>HLA-DRB1</i>	6_32605207_C_G_b37	rs3187964	3.30x10 ⁻¹¹	-0.29	Adipose - Subcutaneous
ENSG00000232629.4	<i>HLA-DQB2</i>	6_32605207_C_G_b37	rs3187964	3.30x10 ⁻¹¹	0.8	Brain - Spinal cord (cervical c-1)
ENSG00000241287.1	<i>XXbac-BPG254F23.6</i>	6_32605207_C_G_b37	rs3187964	4.30x10 ⁻¹¹	-0.45	Nerve - Tibial
ENSG00000237541.3	<i>HLA-DQA2</i>	6_32605207_C_G_b37	rs3187964	4.50x10 ⁻¹¹	0.91	Minor Salivary Gland
ENSG00000223534.1	<i>HLA-DQB1-AS1</i>	6_32605207_C_G_b37	rs3187964	5.70x10 ⁻¹¹	-0.34	Esophagus - Muscularis
ENSG00000237541.3	<i>HLA-DQA2</i>	6_32605207_C_G_b37	rs3187964	6.60x10 ⁻¹¹	0.75	Brain - Anterior cingulate cortex (BA24)
ENSG00000223534.1	<i>HLA-DQB1-AS1</i>	6_32605207_C_G_b37	rs3187964	6.60x10 ⁻¹¹	-0.59	Spleen
ENSG00000196735.7	<i>HLA-DQA1</i>	6_32605207_C_G_b37	rs3187964	6.80x10 ⁻¹¹	-0.44	Pituitary
ENSG00000196735.7	<i>HLA-DQA1</i>	6_32605207_C_G_b37	rs3187964	7.70x10 ⁻¹¹	-0.39	Brain - Caudate (basal ganglia)
ENSG00000232629.4	<i>HLA-DQB2</i>	6_32605207_C_G_b37	rs3187964	8.80x10 ⁻¹¹	0.79	Brain - Amygdala
ENSG00000196126.6	<i>HLA-DRB1</i>	6_32605207_C_G_b37	rs3187964	1.00x10 ⁻¹⁰	-0.49	Brain - Frontal Cortex (BA9)
ENSG00000223534.1	<i>HLA-DQB1-AS1</i>	6_32605207_C_G_b37	rs3187964	1.10x10 ⁻¹⁰	-0.41	Heart - Left Ventricle
ENSG00000198502.5	<i>HLA-DRB5</i>	6_32605207_C_G_b37	rs3187964	1.10x10 ⁻¹⁰	-0.48	Thyroid
ENSG00000232629.4	<i>HLA-DQB2</i>	6_32605207_C_G_b37	rs3187964	1.50x10 ⁻¹⁰	0.78	Brain - Cerebellar Hemisphere
ENSG00000237541.3	<i>HLA-DQA2</i>	6_32605207_C_G_b37	rs3187964	2.00x10 ⁻¹⁰	0.72	Liver
ENSG00000223534.1	<i>HLA-DQB1-AS1</i>	6_32605207_C_G_b37	rs3187964	2.40x10 ⁻¹⁰	-0.46	Stomach

Gencode Id	Gene Symbol	Variant Id	SNP Id	P	NES	Tissue
ENSG00000241287.1	<i>XXbac-BPG254F23.6</i>	6_32605207_C_G_b37	rs3187964	2.40x10 ⁻¹⁰	-0.49	Breast - Mammary Tissue
ENSG00000229391.3	<i>HLA-DRB6</i>	6_32605207_C_G_b37	rs3187964	2.50x10 ⁻¹⁰	0.68	Spleen
ENSG00000198502.5	<i>HLA-DRB5</i>	6_32605207_C_G_b37	rs3187964	2.60x10 ⁻¹⁰	-0.41	Esophagus - Mucosa
ENSG00000196735.7	<i>HLA-DQA1</i>	6_32605207_C_G_b37	rs3187964	3.00x10 ⁻¹⁰	-0.42	Artery - Coronary
ENSG00000229391.3	<i>HLA-DRB6</i>	6_32605207_C_G_b37	rs3187964	3.50x10 ⁻¹⁰	0.66	Liver
ENSG00000237541.3	<i>HLA-DQA2</i>	6_32605207_C_G_b37	rs3187964	3.50x10 ⁻¹⁰	0.72	Brain - Putamen (basal ganglia)
ENSG00000237541.3	<i>HLA-DQA2</i>	6_32605207_C_G_b37	rs3187964	3.60x10 ⁻¹⁰	0.77	Brain - Spinal cord (cervical c-1)
ENSG00000196126.6	<i>HLA-DRB1</i>	6_32605207_C_G_b37	rs3187964	5.40x10 ⁻¹⁰	-0.44	Heart - Atrial Appendage
ENSG00000237541.3	<i>HLA-DQA2</i>	6_32605207_C_G_b37	rs3187964	7.70x10 ⁻¹⁰	0.8	Brain - Cerebellar Hemisphere
ENSG00000223534.1	<i>HLA-DQB1-AS1</i>	6_32605207_C_G_b37	rs3187964	8.00x10 ⁻¹⁰	-0.57	Brain - Cerebellum
ENSG00000237541.3	<i>HLA-DQA2</i>	6_32605207_C_G_b37	rs3187964	9.30x10 ⁻¹⁰	0.79	Brain - Substantia nigra
ENSG00000241287.1	<i>XXbac-BPG254F23.6</i>	6_32605207_C_G_b37	rs3187964	9.70x10 ⁻¹⁰	-0.43	Adipose - Subcutaneous
ENSG00000223534.1	<i>HLA-DQB1-AS1</i>	6_32605207_C_G_b37	rs3187964	1.20x10 ⁻⁰⁹	-0.51	Prostate
ENSG00000179344.12	<i>HLA-DQB1</i>	6_32605207_C_G_b37	rs3187964	1.30x10 ⁻⁰⁹	-0.68	Brain - Anterior cingulate cortex (BA24)
ENSG00000237541.3	<i>HLA-DQA2</i>	6_32605207_C_G_b37	rs3187964	1.90x10 ⁻⁰⁹	0.77	Vagina
ENSG00000196735.7	<i>HLA-DQA1</i>	6_32605207_C_G_b37	rs3187964	2.30x10 ⁻⁰⁹	-0.54	Prostate
ENSG00000223534.1	<i>HLA-DQB1-AS1</i>	6_32605207_C_G_b37	rs3187964	2.30x10 ⁻⁰⁹	-0.38	Colon - Transverse
ENSG00000229391.3	<i>HLA-DRB6</i>	6_32605207_C_G_b37	rs3187964	3.30x10 ⁻⁰⁹	0.65	Prostate
ENSG00000196126.6	<i>HLA-DRB1</i>	6_32605207_C_G_b37	rs3187964	3.40x10 ⁻⁰⁹	-0.47	Brain - Cortex
ENSG00000229391.3	<i>HLA-DRB6</i>	6_32605207_C_G_b37	rs3187964	4.00x10 ⁻⁰⁹	0.68	Adrenal Gland
ENSG00000229391.3	<i>HLA-DRB6</i>	6_32605207_C_G_b37	rs3187964	4.10x10 ⁻⁰⁹	0.64	Brain - Hippocampus
ENSG00000198502.5	<i>HLA-DRB5</i>	6_32605207_C_G_b37	rs3187964	4.70x10 ⁻⁰⁹	-0.35	Muscle - Skeletal
ENSG00000229391.3	<i>HLA-DRB6</i>	6_32605207_C_G_b37	rs3187964	6.10x10 ⁻⁰⁹	0.52	Brain - Caudate (basal ganglia)
ENSG00000196301.3	<i>HLA-DRB9</i>	6_32605207_C_G_b37	rs3187964	8.20x10 ⁻⁰⁹	0.33	Whole Blood
ENSG00000229391.3	<i>HLA-DRB6</i>	6_32605207_C_G_b37	rs3187964	8.80x10 ⁻⁰⁹	0.66	Ovary
ENSG00000237541.3	<i>HLA-DQA2</i>	6_32605207_C_G_b37	rs3187964	1.30x10 ⁻⁰⁸	0.64	Brain - Cerebellum
ENSG00000237541.3	<i>HLA-DQA2</i>	6_32605207_C_G_b37	rs3187964	1.50x10 ⁻⁰⁸	0.76	Brain - Amygdala
ENSG00000196301.3	<i>HLA-DRB9</i>	6_32605207_C_G_b37	rs3187964	1.50x10 ⁻⁰⁸	0.4	Thyroid

Gencode Id	Gene Symbol	Variant Id	SNP Id	P	NES	Tissue
ENSG00000196735.7	<i>HLA-DQA1</i>	6_32605207_C_G_b37	rs3187964	1.60x10 ⁻⁰⁸	-0.62	Cells - EBV-transformed lymphocytes
ENSG00000196126.6	<i>HLA-DRB1</i>	6_32605207_C_G_b37	rs3187964	2.20x10 ⁻⁰⁸	-0.42	Brain - Anterior cingulate cortex (BA24)
ENSG00000223534.1	<i>HLA-DQB1-AS1</i>	6_32605207_C_G_b37	rs3187964	2.20x10 ⁻⁰⁸	-0.35	Esophagus - Gastroesophageal Junction
ENSG00000196301.3	<i>HLA-DRB9</i>	6_32605207_C_G_b37	rs3187964	2.20x10 ⁻⁰⁸	0.41	Adipose - Subcutaneous
ENSG00000196126.6	<i>HLA-DRB1</i>	6_32605207_C_G_b37	rs3187964	2.30x10 ⁻⁰⁸	-0.27	Breast - Mammary Tissue
ENSG00000196126.6	<i>HLA-DRB1</i>	6_32605207_C_G_b37	rs3187964	2.90x10 ⁻⁰⁸	-0.45	Brain - Cerebellum
ENSG00000198502.5	<i>HLA-DRB5</i>	6_32605207_C_G_b37	rs3187964	4.40x10 ⁻⁰⁸	-0.37	Lung
ENSG00000223534.1	<i>HLA-DQB1-AS1</i>	6_32605207_C_G_b37	rs3187964	4.50x10 ⁻⁰⁸	-0.35	Colon - Sigmoid
ENSG00000223534.1	<i>HLA-DQB1-AS1</i>	6_32605207_C_G_b37	rs3187964	4.80x10 ⁻⁰⁸	-0.6	Brain - Anterior cingulate cortex (BA24)
ENSG00000198502.5	<i>HLA-DRB5</i>	6_32605207_C_G_b37	rs3187964	5.00x10 ⁻⁰⁸	-0.34	Artery - Tibial
ENSG00000196735.7	<i>HLA-DQA1</i>	6_32605207_C_G_b37	rs3187964	6.50x10 ⁻⁰⁸	-0.38	Liver
ENSG00000229391.3	<i>HLA-DRB6</i>	6_32605207_C_G_b37	rs3187964	7.00x10 ⁻⁰⁸	0.56	Brain - Cerebellum
ENSG00000223534.1	<i>HLA-DQB1-AS1</i>	6_32605207_C_G_b37	rs3187964	7.40x10 ⁻⁰⁸	-0.58	Brain - Hippocampus
ENSG00000223534.1	<i>HLA-DQB1-AS1</i>	6_32605207_C_G_b37	rs3187964	8.40x10 ⁻⁰⁸	-0.63	Brain - Nucleus accumbens (basal ganglia)
ENSG00000229391.3	<i>HLA-DRB6</i>	6_32605207_C_G_b37	rs3187964	9.40x10 ⁻⁰⁸	0.52	Pituitary
ENSG00000196301.3	<i>HLA-DRB9</i>	6_32605207_C_G_b37	rs3187964	1.10x10 ⁻⁰⁷	0.4	Adipose - Visceral (Omentum)
ENSG00000229391.3	<i>HLA-DRB6</i>	6_32605207_C_G_b37	rs3187964	1.40x10 ⁻⁰⁷	0.55	Brain - Nucleus accumbens (basal ganglia)
ENSG00000196735.7	<i>HLA-DQA1</i>	6_32605207_C_G_b37	rs3187964	1.60x10 ⁻⁰⁷	-0.37	Testis
ENSG00000223534.1	<i>HLA-DQB1-AS1</i>	6_32605207_C_G_b37	rs3187964	1.80x10 ⁻⁰⁷	-0.39	Pancreas
ENSG00000223534.1	<i>HLA-DQB1-AS1</i>	6_32605207_C_G_b37	rs3187964	2.00x10 ⁻⁰⁷	-0.51	Brain - Caudate (basal ganglia)
ENSG00000196126.6	<i>HLA-DRB1</i>	6_32605207_C_G_b37	rs3187964	2.50x10 ⁻⁰⁷	-0.2	Nerve - Tibial
ENSG00000229391.3	<i>HLA-DRB6</i>	6_32605207_C_G_b37	rs3187964	2.90x10 ⁻⁰⁷	0.5	Artery - Coronary
ENSG00000223534.1	<i>HLA-DQB1-AS1</i>	6_32605207_C_G_b37	rs3187964	3.10x10 ⁻⁰⁷	-0.71	Brain - Spinal cord (cervical c-1)
ENSG00000229391.3	<i>HLA-DRB6</i>	6_32605207_C_G_b37	rs3187964	3.60x10 ⁻⁰⁷	0.59	Brain - Putamen (basal ganglia)
ENSG00000198502.5	<i>HLA-DRB5</i>	6_32605207_C_G_b37	rs3187964	3.70x10 ⁻⁰⁷	-0.36	Adipose - Subcutaneous
ENSG00000223534.1	<i>HLA-DQB1-AS1</i>	6_32605207_C_G_b37	rs3187964	4.20x10 ⁻⁰⁷	-0.37	Testis
ENSG00000196735.7	<i>HLA-DQA1</i>	6_32605207_C_G_b37	rs3187964	4.90x10 ⁻⁰⁷	-0.41	Brain - Anterior cingulate cortex (BA24)
ENSG00000223534.1	<i>HLA-DQB1-AS1</i>	6_32605207_C_G_b37	rs3187964	5.30x10 ⁻⁰⁷	-0.5	Pituitary
ENSG00000223534.1	<i>HLA-DQB1-AS1</i>	6_32605207_C_G_b37	rs3187964	5.80x10 ⁻⁰⁷	-0.5	Vagina
ENSG00000196735.7	<i>HLA-DQA1</i>	6_32605207_C_G_b37	rs3187964	5.80x10 ⁻⁰⁷	-0.3	Small Intestine - Terminal Ileum

Gencode Id	Gene Symbol	Variant Id	SNP Id	P	NES	Tissue
ENSG00000196126.6	<i>HLA-DRB1</i>	6_32605207_C_G_b37	rs3187964	6.40x10 ⁻⁰⁷	-0.3	Brain - Caudate (basal ganglia)
ENSG00000179344.12	<i>HLA-DQB1</i>	6_32605207_C_G_b37	rs3187964	7.40x10 ⁻⁰⁷	-0.47	Brain - Cortex
ENSG00000223534.1	<i>HLA-DQB1-AS1</i>	6_32605207_C_G_b37	rs3187964	7.70x10 ⁻⁰⁷	-0.56	Brain - Cortex
ENSG00000196301.3	<i>HLA-DRB9</i>	6_32605207_C_G_b37	rs3187964	0.0000011	0.39	Artery - Aorta
ENSG00000196126.6	<i>HLA-DRB1</i>	6_32605207_C_G_b37	rs3187964	0.0000015	-0.25	Artery - Coronary
ENSG00000229391.3	<i>HLA-DRB6</i>	6_32605207_C_G_b37	rs3187964	0.0000015	0.46	Brain - Anterior cingulate cortex (BA24)
ENSG00000196126.6	<i>HLA-DRB1</i>	6_32605207_C_G_b37	rs3187964	0.0000019	-0.26	Heart - Left Ventricle
ENSG00000241287.1	<i>XXbac-BPG254F23.6</i>	6_32605207_C_G_b37	rs3187964	0.0000022	-0.57	Spleen
ENSG00000229391.3	<i>HLA-DRB6</i>	6_32605207_C_G_b37	rs3187964	0.0000023	0.59	Uterus
ENSG00000223534.1	<i>HLA-DQB1-AS1</i>	6_32605207_C_G_b37	rs3187964	0.0000025	-0.33	Artery - Coronary
ENSG00000229391.3	<i>HLA-DRB6</i>	6_32605207_C_G_b37	rs3187964	0.0000028	0.6	Brain - Substantia nigra
ENSG00000196126.6	<i>HLA-DRB1</i>	6_32605207_C_G_b37	rs3187964	0.0000028	-0.28	Pituitary
ENSG00000223534.1	<i>HLA-DQB1-AS1</i>	6_32605207_C_G_b37	rs3187964	0.0000033	-0.59	Brain - Hypothalamus
ENSG00000196126.6	<i>HLA-DRB1</i>	6_32605207_C_G_b37	rs3187964	0.0000034	-0.12	Whole Blood
ENSG00000223534.1	<i>HLA-DQB1-AS1</i>	6_32605207_C_G_b37	rs3187964	0.0000035	-0.34	Small Intestine - Terminal Ileum
ENSG00000196126.6	<i>HLA-DRB1</i>	6_32605207_C_G_b37	rs3187964	0.0000036	-0.34	Testis
ENSG00000196126.6	<i>HLA-DRB1</i>	6_32605207_C_G_b37	rs3187964	0.0000037	-0.23	Adipose - Visceral (Omentum)
ENSG00000241287.1	<i>XXbac-BPG254F23.6</i>	6_32605207_C_G_b37	rs3187964	0.0000038	-0.31	Lung
ENSG00000198502.5	<i>HLA-DRB5</i>	6_32605207_C_G_b37	rs3187964	0.0000049	-0.43	Heart - Atrial Appendage
ENSG00000244731.3	<i>C4A</i>	6_32605207_C_G_b37	rs3187964	0.000006	-0.22	Thyroid
ENSG00000198502.5	<i>HLA-DRB5</i>	6_32605207_C_G_b37	rs3187964	0.000006	-0.42	Heart - Left Ventricle
ENSG00000196126.6	<i>HLA-DRB1</i>	6_32605207_C_G_b37	rs3187964	0.0000066	-0.25	Pancreas
ENSG00000204301.5	<i>NOTCH4</i>	6_32605207_C_G_b37	rs3187964	0.000008	-0.16	Adipose - Subcutaneous
ENSG00000196301.3	<i>HLA-DRB9</i>	6_32605207_C_G_b37	rs3187964	0.000008	0.37	Breast - Mammary Tissue
ENSG00000196735.7	<i>HLA-DQA1</i>	6_32605207_C_G_b37	rs3187964	0.000009	-0.57	Minor Salivary Gland
ENSG00000196126.6	<i>HLA-DRB1</i>	6_32605207_C_G_b37	rs3187964	0.0000093	-0.36	Brain - Putamen (basal ganglia)
ENSG00000196301.3	<i>HLA-DRB9</i>	6_32605207_C_G_b37	rs3187964	0.0000093	0.3	Nerve - Tibial
ENSG00000196735.7	<i>HLA-DQA1</i>	6_32605207_C_G_b37	rs3187964	0.0000094	-0.41	Brain - Putamen (basal ganglia)

Gencode Id	Gene Symbol	Variant Id	SNP Id	P	NES	Tissue
ENSG00000229391.3	<i>HLA-DRB6</i>	6_32605207_C_G_b37	rs3187964	0.0000095	0.53	Brain - Cerebellar Hemisphere
ENSG00000244731.3	<i>C4A</i>	6_32605207_C_G_b37	rs3187964	0.000015	-0.25	Heart - Left Ventricle
ENSG00000244731.3	<i>C4A</i>	6_32605207_C_G_b37	rs3187964	0.000015	-0.23	Skin - Sun Exposed (Lower leg)
ENSG00000179344.12	<i>HLA-DQB1</i>	6_32605207_C_G_b37	rs3187964	0.000015	-0.51	Brain - Frontal Cortex (BA9)
ENSG00000229391.3	<i>HLA-DRB6</i>	6_32605207_C_G_b37	rs3187964	0.000017	0.47	Small Intestine - Terminal Ileum
ENSG00000204301.5	<i>NOTCH4</i>	6_32605207_C_G_b37	rs3187964	0.000019	-0.12	Skin - Sun Exposed (Lower leg)
ENSG00000204305.9	<i>AGER</i>	6_32605207_C_G_b37	rs3187964	0.00002	0.2	Nerve - Tibial
ENSG00000198502.5	<i>HLA-DRB5</i>	6_32605207_C_G_b37	rs3187964	0.00003	-0.32	Colon - Transverse
ENSG00000244731.3	<i>C4A</i>	6_32605207_C_G_b37	rs3187964	0.000034	-0.25	Nerve - Tibial
ENSG00000204301.5	<i>NOTCH4</i>	6_32605207_C_G_b37	rs3187964	0.000036	-0.16	Skin - Not Sun Exposed (Suprapubic)
ENSG00000198502.5	<i>HLA-DRB5</i>	6_32605207_C_G_b37	rs3187964	0.000037	-0.21	Whole Blood
ENSG00000198502.5	<i>HLA-DRB5</i>	6_32605207_C_G_b37	rs3187964	0.000045	-0.27	Skin - Sun Exposed (Lower leg)
ENSG00000204301.5	<i>NOTCH4</i>	6_32605207_C_G_b37	rs3187964	0.000045	-0.16	Adipose - Visceral (Omentum)
ENSG00000198502.5	<i>HLA-DRB5</i>	6_32605207_C_G_b37	rs3187964	0.000049	-0.29	Skin - Not Sun Exposed (Suprapubic)

NES = normalized effect size computed as the effect of the alternative allele relative to the reference allele in the human genome reference (hg19)

Table S10. Single-Tissue eQTL for ts114598080 in the GTEx project

Gencode Id	Gene Symbol	Variant Id	SNP Id	P-Value	NES	Tissue
ENSG00000204531.11	<i>POU5F1</i>	6_31255442_G_A_b37	rs114598080	3.20x10 ⁻¹¹	-0.9	Skin - Sun Exposed (Lower leg)
ENSG00000204531.11	<i>POU5F1</i>	6_31255442_G_A_b37	rs114598080	5.10x10 ⁻¹¹	-0.9	Artery - Tibial
ENSG00000204531.11	<i>POU5F1</i>	6_31255442_G_A_b37	rs114598080	4.40x10 ⁻⁰⁸	-0.73	Heart - Left Ventricle
ENSG00000204531.11	<i>POU5F1</i>	6_31255442_G_A_b37	rs114598080	4.40x10 ⁻⁰⁸	-0.88	Nerve - Tibial
ENSG00000204528.3	<i>PSORS1C3</i>	6_31255442_G_A_b37	rs114598080	2.90x10 ⁻⁰⁷	-0.84	Skin - Sun Exposed (Lower leg)
ENSG00000204531.11	<i>POU5F1</i>	6_31255442_G_A_b37	rs114598080	9.80x10 ⁻⁰⁷	-0.79	Thyroid
ENSG00000204531.11	<i>POU5F1</i>	6_31255442_G_A_b37	rs114598080	1.20x10 ⁻⁰⁶	-0.72	Muscle - Skeletal
ENSG00000204531.11	<i>POU5F1</i>	6_31255442_G_A_b37	rs114598080	2.20x10 ⁻⁰⁶	-0.65	Adipose - Subcutaneous
ENSG00000204531.11	<i>POU5F1</i>	6_31255442_G_A_b37	rs114598080	2.30x10 ⁻⁰⁶	-0.77	Adipose - Visceral (Omentum)
ENSG00000204531.11	<i>POU5F1</i>	6_31255442_G_A_b37	rs114598080	3.10x10 ⁻⁰⁶	-0.71	Skin - Not Sun Exposed (Suprapubic)
ENSG00000137310.7	<i>TCF19</i>	6_31255442_G_A_b37	rs114598080	3.40x10 ⁻⁰⁶	-0.57	Skin - Not Sun Exposed (Suprapubic)
ENSG00000204528.3	<i>PSORS1C3</i>	6_31255442_G_A_b37	rs114598080	3.50x10 ⁻⁰⁶	-0.97	Artery - Aorta
ENSG00000204531.11	<i>POU5F1</i>	6_31255442_G_A_b37	rs114598080	4.00x10 ⁻⁰⁶	-0.69	Lung
ENSG00000204536.9	<i>CCHCR1</i>	6_31255442_G_A_b37	rs114598080	6.80x10 ⁻⁰⁶	-0.42	Artery - Tibial
ENSG00000204531.11	<i>POU5F1</i>	6_31255442_G_A_b37	rs114598080	7.20x10 ⁻⁰⁶	-0.74	Esophagus - Mucosa
ENSG00000204531.11	<i>POU5F1</i>	6_31255442_G_A_b37	rs114598080	1.60x10 ⁻⁰⁵	-0.77	Artery - Aorta
ENSG00000137310.7	<i>TCF19</i>	6_31255442_G_A_b37	rs114598080	1.80x10 ⁻⁰⁵	-0.42	Artery - Tibial
ENSG00000204531.11	<i>POU5F1</i>	6_31255442_G_A_b37	rs114598080	2.00x10 ⁻⁰⁵	-0.75	Liver
ENSG00000204531.11	<i>POU5F1</i>	6_31255442_G_A_b37	rs114598080	2.10x10 ⁻⁰⁵	-0.8	Esophagus - Gastroesophageal Junction
ENSG00000204536.9	<i>CCHCR1</i>	6_31255442_G_A_b37	rs114598080	2.50x10 ⁻⁰⁵	-0.42	Skin - Sun Exposed (Lower leg)
ENSG00000204536.9	<i>CCHCR1</i>	6_31255442_G_A_b37	rs114598080	2.80x10 ⁻⁰⁵	-0.51	Skin - Not Sun Exposed (Suprapubic)
ENSG00000204531.11	<i>POU5F1</i>	6_31255442_G_A_b37	rs114598080	3.30x10 ⁻⁰⁵	-0.77	Esophagus - Muscularis
ENSG00000204536.9	<i>CCHCR1</i>	6_31255442_G_A_b37	rs114598080	3.60x10 ⁻⁰⁵	-0.36	Adipose - Visceral (Omentum)
ENSG00000204531.11	<i>POU5F1</i>	6_31255442_G_A_b37	rs114598080	6.00x10 ⁻⁰⁵	-0.6	Heart - Atrial Appendage
ENSG00000204528.3	<i>PSORS1C3</i>	6_31255442_G_A_b37	rs114598080	6.30x10 ⁻⁰⁵	-0.69	Lung
ENSG00000272221.1	<i>XXbac-BPG181B23.7</i>	6_31255442_G_A_b37	rs114598080	8.40x10 ⁻⁰⁵	0.66	Artery - Tibial

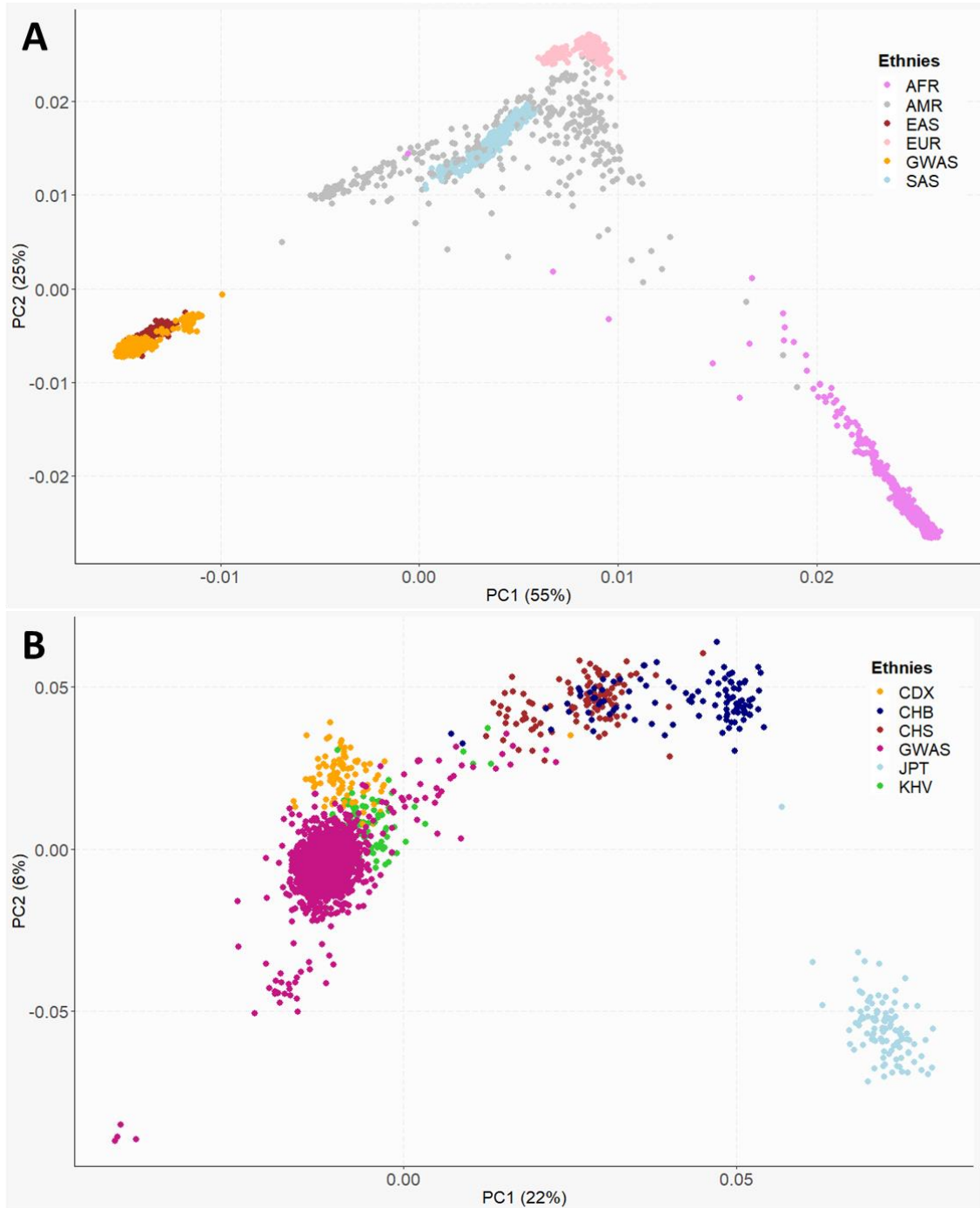
Table S11. Single-Tissue eQTL for rs1265048 in the GTEx project

Gencode Id	Gene Symbol	Variant Id	SNP Id	P-Value	NES	Tissue
ENSG00000137411.12	<i>VARS2</i>	6_31081409_T_C_b37	rs1265048	6.10x10 ⁻¹⁵	0.38	Thyroid
ENSG00000272501.1	<i>XXbac-BPG299F13.17</i>	6_31081409_T_C_b37	rs1265048	3.00x10 ⁻⁰⁹	0.27	Thyroid
ENSG00000206344.6	<i>HCG27</i>	6_31081409_T_C_b37	rs1265048	3.80x10 ⁻⁰⁹	0.25	Lung
ENSG00000231402.1	<i>WASF5P</i>	6_31081409_T_C_b37	rs1265048	1.60x10 ⁻⁰⁸	-0.5	Pancreas
ENSG00000137411.12	<i>VARS2</i>	6_31081409_T_C_b37	rs1265048	1.70x10 ⁻⁰⁸	0.32	Stomach
ENSG00000137411.12	<i>VARS2</i>	6_31081409_T_C_b37	rs1265048	2.20x10 ⁻⁰⁸	0.39	Pancreas
ENSG00000137411.12	<i>VARS2</i>	6_31081409_T_C_b37	rs1265048	4.00x10 ⁻⁰⁸	0.27	Esophagus - Muscularis
ENSG00000206344.6	<i>HCG27</i>	6_31081409_T_C_b37	rs1265048	4.30x10 ⁻⁰⁸	0.31	Nerve - Tibial
ENSG00000137411.12	<i>VARS2</i>	6_31081409_T_C_b37	rs1265048	5.20x10 ⁻⁰⁸	0.31	Skin - Sun Exposed (Lower leg)
ENSG00000272501.1	<i>XXbac-BPG299F13.17</i>	6_31081409_T_C_b37	rs1265048	8.90x10 ⁻⁰⁸	0.31	Nerve - Tibial
ENSG00000137411.12	<i>VARS2</i>	6_31081409_T_C_b37	rs1265048	9.60x10 ⁻⁰⁸	0.3	Nerve - Tibial
ENSG00000206344.6	<i>HCG27</i>	6_31081409_T_C_b37	rs1265048	1.10x10 ⁻⁰⁷	0.31	Colon - Transverse
ENSG00000206344.6	<i>HCG27</i>	6_31081409_T_C_b37	rs1265048	1.20x10 ⁻⁰⁷	0.21	Thyroid
ENSG00000206344.6	<i>HCG27</i>	6_31081409_T_C_b37	rs1265048	1.70x10 ⁻⁰⁷	0.32	Skin - Not Sun Exposed (Suprapubic)
ENSG00000206344.6	<i>HCG27</i>	6_31081409_T_C_b37	rs1265048	1.90x10 ⁻⁰⁷	0.22	Esophagus - Muscularis
ENSG00000206344.6	<i>HCG27</i>	6_31081409_T_C_b37	rs1265048	2.10x10 ⁻⁰⁷	0.23	Artery - Tibial
ENSG00000137411.12	<i>VARS2</i>	6_31081409_T_C_b37	rs1265048	2.40x10 ⁻⁰⁷	0.35	Heart - Left Ventricle
ENSG00000206344.6	<i>HCG27</i>	6_31081409_T_C_b37	rs1265048	3.30x10 ⁻⁰⁷	0.15	Whole Blood
ENSG00000206344.6	<i>HCG27</i>	6_31081409_T_C_b37	rs1265048	4.70x10 ⁻⁰⁷	0.31	Colon - Sigmoid
ENSG00000137411.12	<i>VARS2</i>	6_31081409_T_C_b37	rs1265048	6.00x10 ⁻⁰⁷	0.35	Colon - Transverse
ENSG00000272501.1	<i>XXbac-BPG299F13.17</i>	6_31081409_T_C_b37	rs1265048	6.50x10 ⁻⁰⁷	0.25	Esophagus - Mucosa
ENSG00000206344.6	<i>HCG27</i>	6_31081409_T_C_b37	rs1265048	0.0000011	0.26	Adipose - Subcutaneous
ENSG00000137411.12	<i>VARS2</i>	6_31081409_T_C_b37	rs1265048	0.0000011	0.24	Lung
ENSG00000240053.8	<i>LY6G5B</i>	6_31081409_T_C_b37	rs1265048	0.0000012	-0.11	Lung
ENSG00000137411.12	<i>VARS2</i>	6_31081409_T_C_b37	rs1265048	0.0000014	0.24	Artery - Tibial
ENSG00000137411.12	<i>VARS2</i>	6_31081409_T_C_b37	rs1265048	0.0000018	0.28	Skin - Not Sun Exposed (Suprapubic)
ENSG00000137411.12	<i>VARS2</i>	6_31081409_T_C_b37	rs1265048	0.0000019	0.32	Breast - Mammary Tissue
ENSG00000206344.6	<i>HCG27</i>	6_31081409_T_C_b37	rs1265048	0.000003	0.23	Cells - Transformed fibroblasts

Gencode Id	Gene Symbol	Variant Id	SNP Id	P-Value	NES	Tissue
ENSG00000137310.7	<i>TCF19</i>	6_31081409_T_C_b37	rs1265048	0.0000031	0.36	Pancreas
ENSG00000137411.12	<i>VAR52</i>	6_31081409_T_C_b37	rs1265048	0.0000031	0.4	Adrenal Gland
ENSG00000272501.1	<i>XXbac-BPG299F13.17</i>	6_31081409_T_C_b37	rs1265048	0.0000035	0.24	Skin - Sun Exposed (Lower leg)
ENSG00000137411.12	<i>VAR52</i>	6_31081409_T_C_b37	rs1265048	0.0000045	0.25	Adipose - Subcutaneous
ENSG00000137411.12	<i>VAR52</i>	6_31081409_T_C_b37	rs1265048	0.0000049	0.3	Artery - Aorta
ENSG00000137411.12	<i>VAR52</i>	6_31081409_T_C_b37	rs1265048	0.0000055	0.37	Pituitary
ENSG00000204540.6	<i>PSORS1C1</i>	6_31081409_T_C_b37	rs1265048	0.0000061	0.41	Heart - Left Ventricle
ENSG00000137411.12	<i>VAR52</i>	6_31081409_T_C_b37	rs1265048	0.000013	0.28	Esophagus - Gastroesophageal Junction
ENSG00000204525.10	<i>HLA-C</i>	6_31081409_T_C_b37	rs1265048	0.000013	-0.33	Pancreas
ENSG00000204540.6	<i>PSORS1C1</i>	6_31081409_T_C_b37	rs1265048	0.000019	0.35	Heart - Atrial Appendage
ENSG00000206344.6	<i>HCG27</i>	6_31081409_T_C_b37	rs1265048	0.000021	0.38	Brain - Cerebellum
ENSG00000137411.12	<i>VAR52</i>	6_31081409_T_C_b37	rs1265048	0.000023	0.16	Esophagus - Mucosa
ENSG00000206344.6	<i>HCG27</i>	6_31081409_T_C_b37	rs1265048	0.000025	0.17	Muscle - Skeletal
ENSG00000204531.11	<i>POU5F1</i>	6_31081409_T_C_b37	rs1265048	0.000028	-0.27	Heart - Left Ventricle
ENSG00000206344.6	<i>HCG27</i>	6_31081409_T_C_b37	rs1265048	0.000034	0.24	Adipose - Visceral (Omentum)
ENSG00000206344.6	<i>HCG27</i>	6_31081409_T_C_b37	rs1265048	0.000034	0.25	Stomach
ENSG00000206344.6	<i>HCG27</i>	6_31081409_T_C_b37	rs1265048	0.000035	0.29	Testis
ENSG00000272501.1	<i>XXbac-BPG299F13.17</i>	6_31081409_T_C_b37	rs1265048	0.000036	0.26	Skin - Not Sun Exposed (Suprapubic)
ENSG00000204531.11	<i>POU5F1</i>	6_31081409_T_C_b37	rs1265048	0.000036	-0.3	Heart - Atrial Appendage
ENSG00000272501.1	<i>XXbac-BPG299F13.17</i>	6_31081409_T_C_b37	rs1265048	0.000046	0.17	Muscle - Skeletal
ENSG00000206344.6	<i>HCG27</i>	6_31081409_T_C_b37	rs1265048	0.000046	0.23	Skin - Sun Exposed (Lower leg)
ENSG00000272501.1	<i>XXbac-BPG299F13.17</i>	6_31081409_T_C_b37	rs1265048	0.00005	0.23	Artery - Tibial
ENSG00000204528.3	<i>PSORS1C3</i>	6_31081409_T_C_b37	rs1265048	0.000051	0.22	Whole Blood
ENSG00000137411.12	<i>VAR52</i>	6_31081409_T_C_b37	rs1265048	0.000061	0.18	Cells - Transformed fibroblasts
ENSG00000229836.1	<i>XXbac-BPG248L24.10</i>	6_31081409_T_C_b37	rs1265048	0.000082	-0.27	Thyroid
ENSG00000204525.10	<i>HLA-C</i>	6_31081409_T_C_b37	rs1265048	0.000097	-0.21	Muscle - Skeletal
ENSG00000204528.3	<i>PSORS1C3</i>	6_31081409_T_C_b37	rs1265048	0.0001	0.25	Muscle - Skeletal
ENSG00000137310.7	<i>TCF19</i>	6_31081409_T_C_b37	rs1265048	0.00013	0.15	Muscle - Skeletal

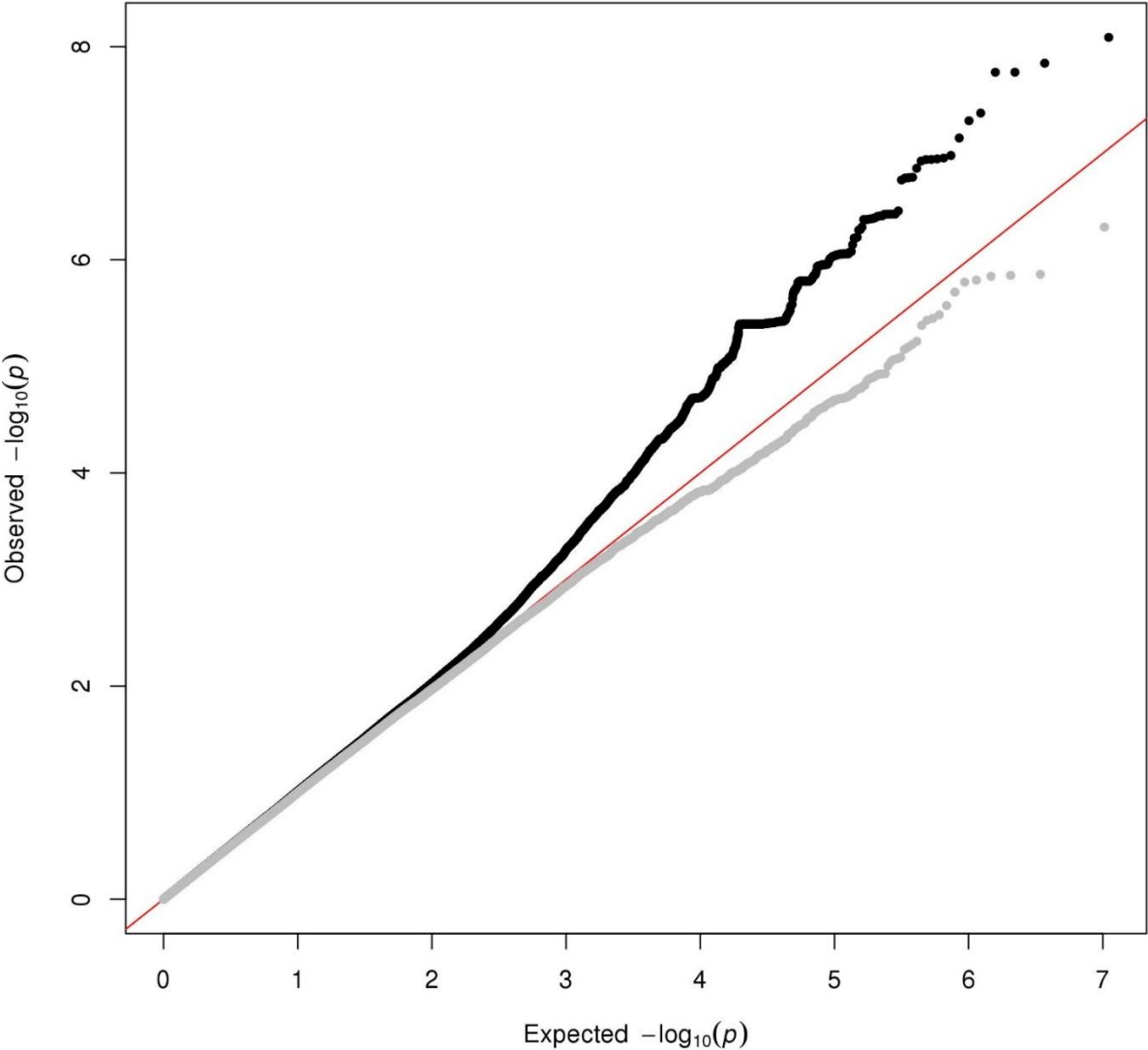
NES = normalized effect size computed as the effect of the alternative allele relative to the reference allele in the human genome reference (hg19)

Figure S1. Principal component analysis of the GWAS discovery sample with all 1000 genomes phase 3 samples (A) and with the East-Asian 1000 genomes samples (B)



AFR = African; AMR = American; EAS = East Asian; EUR = European; GWAS = Genome-wide association study samples; SAS = South Asian; CDX = Chinese Dai in Xishuangbanna, China; CHB = Han Chinese in Beijing, China; CHS = Southern Han Chinese; JPT = Japanese in Tokyo, Japan; KHV = Kinh in Ho Chi Minh City, Vietnam

Figure S2. Quantile-quantile plot of the association results with leprosy *per se* in the family-based GWAS for all SNPs (black) and all SNPs outside the HLA region (grey)



Reference

1. Zhang F, Liu H, Chen S, Low H, Sun L, Cui Y, et al. Identification of two new loci at IL23R and RAB32 that influence susceptibility to leprosy. *Nat Genet.* 2011;43(12):1247-51.
2. Liu H, Wang Z, Li Y, Yu G, Fu X, Wang C, et al. Genome-Wide Analysis of Protein-Coding Variants in Leprosy. *J Invest Dermatol.* 2017;137(12):2544-51.
3. Liu H, Bao F, Irwanto A, Fu X, Lu N, Yu G, et al. An association study of TOLL and CARD with leprosy susceptibility in Chinese population. *Hum Mol Genet.* 2013;22(21):4430-7.
4. Liu H, Irwanto A, Fu X, Yu G, Yu Y, Sun Y, et al. Discovery of six new susceptibility loci and analysis of pleiotropic effects in leprosy. *Nat Genet.* 2015;47(3):267-71.
5. Liu H, Irwanto A, Tian H, Fu X, Yu Y, Yu G, et al. Identification of IL18RAP/IL18R1 and IL12B as leprosy risk genes demonstrates shared pathogenesis between inflammation and infectious diseases. *Am J Hum Genet.* 2012;91(5):935-41.
6. Wang Z, Sun Y, Fu X, Yu G, Wang C, Bao F, et al. A large-scale genome-wide association and meta-analysis identified four novel susceptibility loci for leprosy. *Nat Commun.* 2016;7:13760.
7. Wong SH, Gochhait S, Malhotra D, Pettersson FH, Teo YY, Khor CC, et al. Leprosy and the adaptation of human toll-like receptor 1. *PLoS Pathog.* 2010;6:e1000979.
8. Wang Z, Mi Z, Wang H, Sun L, Yu G, Fu X, et al. Discovery of 4 exonic and 1 intergenic novel susceptibility loci for leprosy. *Clin Genet.* 2018;94(2):259-63.
9. Zhang FR, Huang W, Chen SM, Sun LD, Liu H, Li Y, et al. Genomewide association study of leprosy. *N Engl J Med.* 2009;361(27):2609-18.
10. Wang D, Fan Y, Malhi M, Bi R, Wu Y, Xu M, et al. Missense Variants in HIF1A and LACC1 Contribute to Leprosy Risk in Han Chinese. *Am J Hum Genet.* 2018;102(5):794-805.