

# 1 **Metagenomic Study Revealed the Potential Role of the Gut Microbiome in Gout**

2  
3 Yongliang Chu<sup>1,6†</sup>, Yufen Huang<sup>2‡</sup>, Qingchun Huang<sup>1‡</sup>, Xuefeng Xie<sup>2‡</sup>, Peng Wang<sup>2‡</sup>, Junxia Li<sup>1</sup>, Lifeng  
4 Liang<sup>2</sup>, Xiaohong He<sup>1</sup>, Yiqi Jiang<sup>2,5</sup>, Maojie Wang<sup>1</sup>, Jianhua Yang<sup>2</sup>, Xiumin Chen<sup>1</sup>, Chu Zhou<sup>2</sup>, Yue  
5 Zhao<sup>1</sup>, Fen Ding<sup>2</sup>, Yi Zhang<sup>2</sup>, Xiaodong Wu<sup>1</sup>, Xueyuan Bai<sup>4</sup>, JiaQi Wu<sup>1</sup>, Xia Wei<sup>2</sup>, XiangHong Chen<sup>1</sup>,  
6 Xiaodong Fang<sup>1,2</sup>, Zhang Wang<sup>7</sup>, Qiang Gao<sup>1,2\*</sup>, Silong Sun<sup>1,2\*</sup>, and Runyue Huang<sup>1,3\*</sup>

## 7 8 **Supplementary experimental procedures**

9 *DNA library construction:* 1.5 µg DNA was fragmented by Covaris E210 (Covaris, USA). The  
10 fragmented DNAs were tested by Gel-Electrophotometric. The fragmented DNAs were combined  
11 with End Repair Mix, incubated at 20 °C for 30 min. The end-repaired DNA was purified with  
12 QIAquick PCR Purification Kit (QIAGEN, Germany), then A-Tailing Mix was added and incubated  
13 at 37 °C for 30 min. The purified Adenylate 3'-Ends DNA was combined Adapter and Ligation Mix,  
14 incubated the ligation reaction at 20 °C for 15 min. Adapter-ligated DNA was selected by running a  
15 2% agarose gel to recover the target fragments. The gel was purified with QIAquick Gel Extraction  
16 Kit (QIAGEN, Germany). Several rounds of PCR amplification with PCR Primer Cocktail and PCR  
17 Master Mix were performed to enrich the Adapter-ligated DNA fragments. Then the PCR products  
18 were selected by running 2% agarose gel to recover the target fragments. The gel was purified with  
19 QIAquick Gel Extraction Kit (QIAGEN, Germany).

## 20 21 **Additional materials**

22 Supplementary Figures

23 **Figure S1.** Gut microbial composition of gout patients and healthy controls.

24 **Figure S2.** Identification of gut enterotypes in gout patients and healthy controls.

25 **Figure S3.** Gut microbial gene functions between healthy controls and gout patients.

26 **Figure S4.** Gout-associated microbial gene functions related to lipid A biosynthesis.

- 1 **Figure S5.** The associations between SUA and genera belonging to Enterobacteriaceae.
- 2 **Figure S6.** Urate degradation gene in bacteria.
- 3 **Figure S7.** Relative abundance of genes related to acetate, propionate and butyrate in healthy controls  
4 and gout patients.
- 5 **Figure S8.** Co-occurrence network of gut MGS in the healthy controls and gout patients.
- 6 **Figure S9.** Biplot of canonical correspondence analysis (CCA) for influence of phenotype on the gut  
7 microbiome.
- 8 **Figure S10.** Correlation between gut microbiome and clinical indices.
- 9 **Figure S11.** Gut MGSs were influenced by gout-associated indices.
- 10 **Figure S12.** Gut MGSs were influenced by medication.
- 11 **Figure S13.** Comparison of gut microbial functions and species in different diseases.
- 12
- 13 Supplementary Tables
- 14 **Table S1.** Phenotypes of all participants.
- 15 **Table S2.** Data production, quality control and IGC database alignment.
- 16 **Table S3.** Correlations between the top 5 principle components (PCs) with some known factors.
- 17 **Table S4.** Gout associated genera.
- 18 **Table S5.** Gout associated species.
- 19 **Table S6.** Gout associated KOs.
- 20 **Table S7.** Gout associated pathways and modules.
- 21 **Table S8.** Spearman's rank correlation between Urate degradation-associated KOs and genera.
- 22 **Table S9.** Urate degradation-associated species in KEGG database.
- 23 **Table S10.** Gout associated MGS.
- 24 **Table S11.** PERMANOVA results for the influence of gout.
- 25 **Table S12.** Spearman's rank correlation between gout-associated MGSs and clinical indices.
- 26 **Table S13.** The 16 MGS markers were identified to discriminate between healthy controls and gout

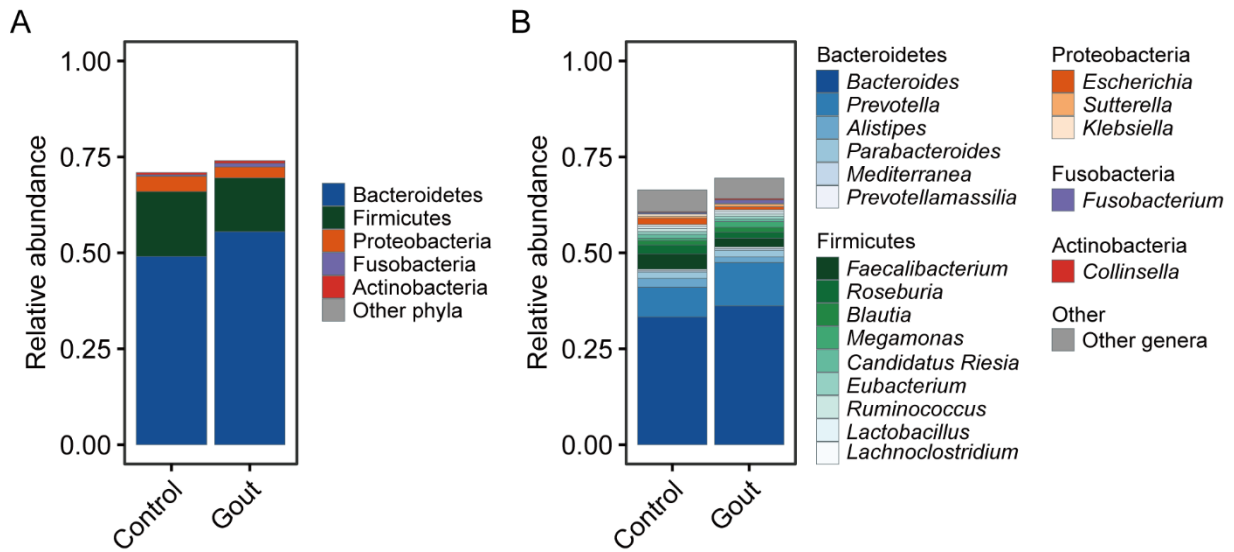
1 patients based on a random forest model.

2 **Table S14.** The probability of gout was predicted in discovery samples and validation cohort  
3 according to the 16 MGS biomarkers selected by the random forest model.

4 **Table S15.** Influence of drugs on the gut microbiome.

5

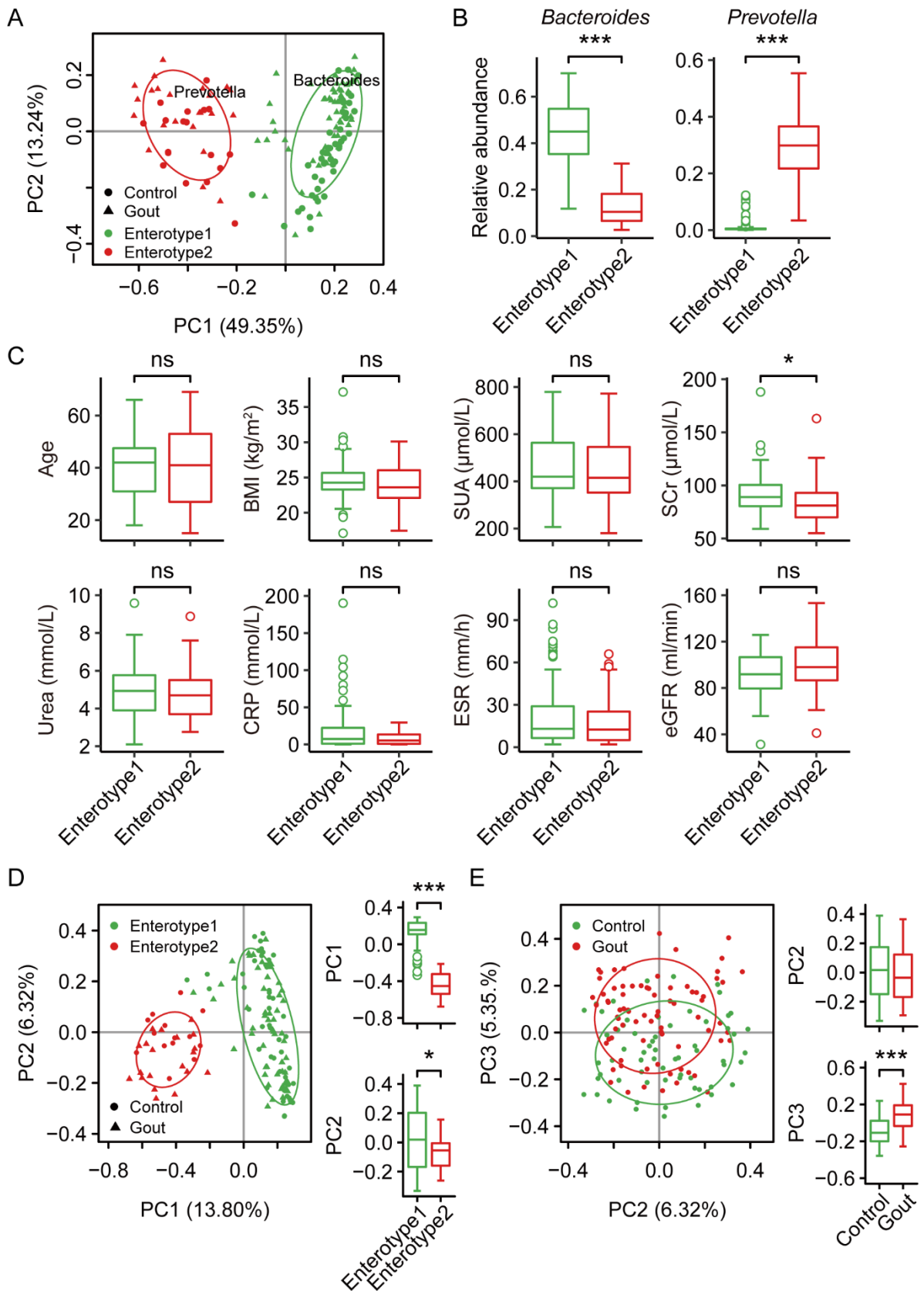
6 **Supplementary figures**



7

8 **Figure S1.** Gut microbial composition of gout patients and healthy controls. Relative abundance of  
9 phylum (A) and genus (B) levels. Predominant taxa were shown and the unclassified taxa were not  
10 graphed.

11

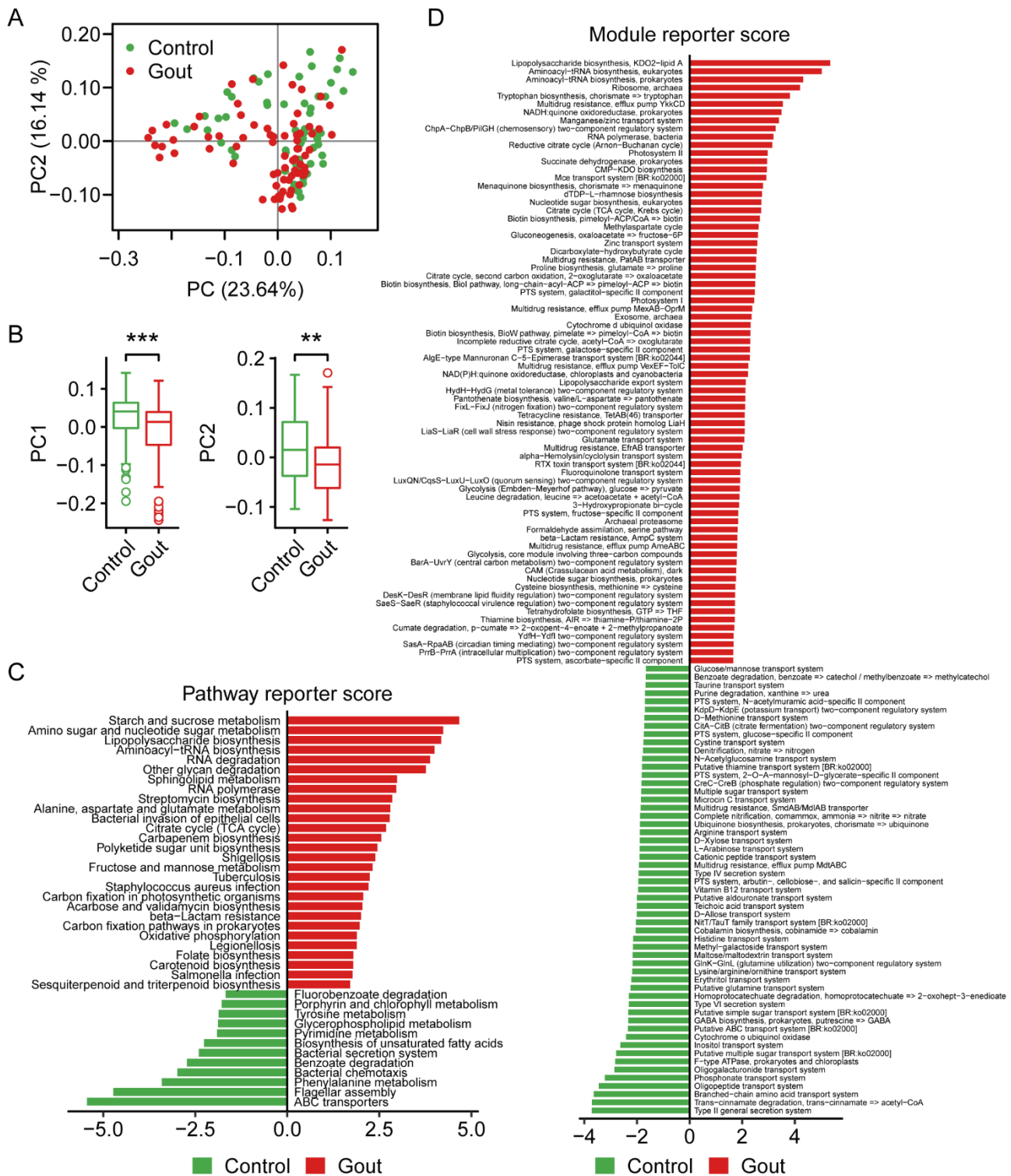


1

2 **Figure S2.** Identification of gut enterotypes in gout patients and healthy controls. (A) Two enterotypes  
 3 were identified by PCA at the genus level. Predominant genera in enterotype1 and enterotype2 were  
 4 *Bacteroides* and *Prevotella*, respectively. (B) Relative abundance of *Bacteroides* and *Prevotella* in

1 each enterotype. (C) Association of enterotypes with clinical indices. (D) Two enterotypes were  
2 identified by PCA at the gene level. (E) Principle component analysis (PCA) based on the gene  
3 abundance profile. Considering PC1 significantly related to enterotype, PC2 and PC3 were displayed.  
4 Wilcoxon rank-sum test was used to determine significance, '\*' denotes  $P < 0.05$ ; '\*\*' denotes  $P <$   
5  $0.01$ ; '\*\*\*' denotes  $P < 0.001$ ; ns denotes no significant difference.

6

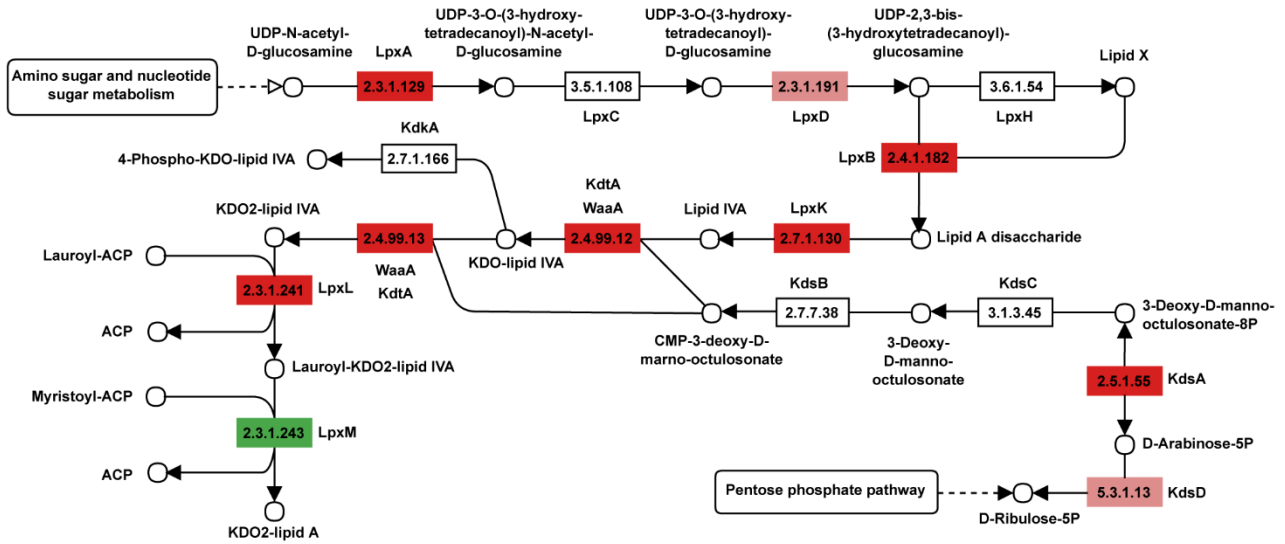


1 controls and gout patients. Pathways or modules were shown if reporter score > 1.65 or < -1.65. Green,  
 2 enriched in healthy controls; Red, enriched in gout patients.

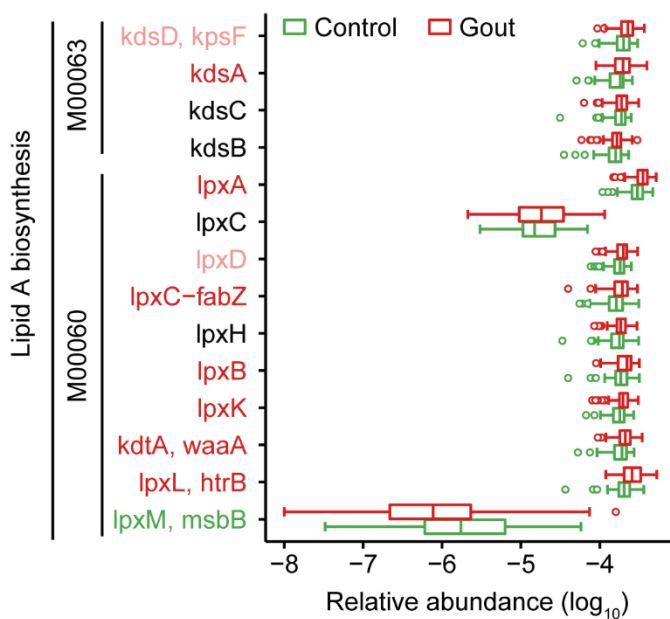
3

A

Lipid A biosynthesis



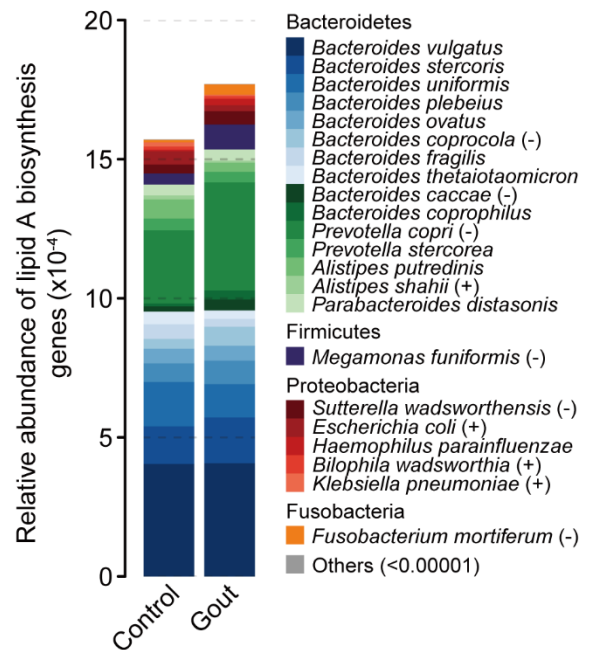
B



4

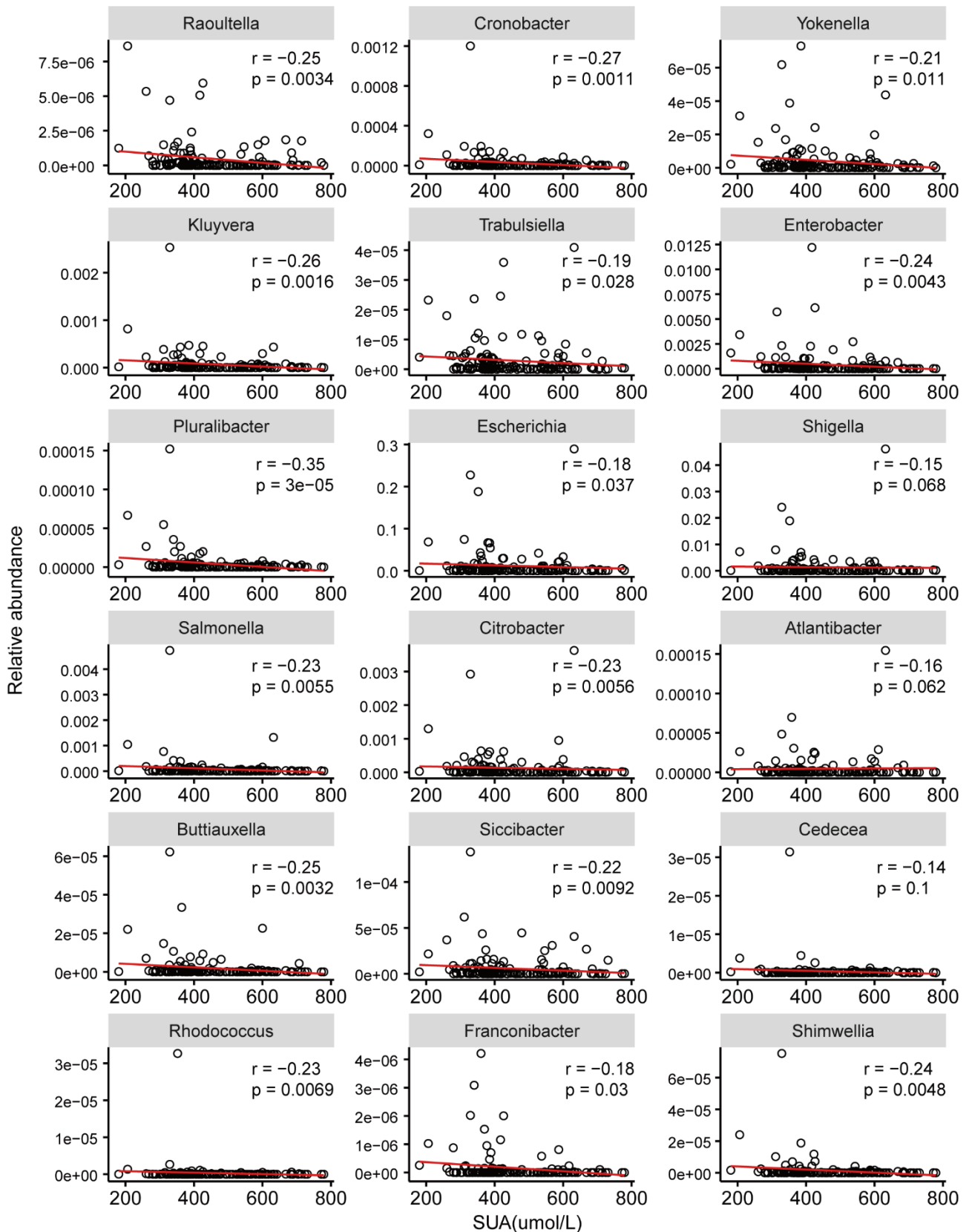
5 **Figure S4.** Gout-associated microbial gene functions related to lipid A biosynthesis. (A) Module for  
 6 lipid A biosynthesis. (B) Relative abundance of KOs involved in lipid A biosynthesis. Significantly  
 7 enriched KOs were identified by Wilcoxon rank-sum test and the boxes or KO names were colored  
 8 according to the direction of enrichment. Green and light green, enriched in healthy control (Green,  
 9 FDR < 0.05; light green,  $P < 0.05$ ); Red and light red, enriched in gout patients (Red, FDR < 0.05;

C



1 light red,  $P < 0.05$ ); Boxes with no color or KO names with black, no difference; Boxes with grey,  
2 not detected in samples. (C) Contributions of species to lipid A biosynthesis. Species with mean  
3 relative abundance more than 0.00001 in the patient or healthy control group were shown. Species  
4 with significantly different relative abundance were marked with '+' or '-' ( $P < 0.05$ ), which was also  
5 corresponding to healthy control-enriched or gout patient-enriched, respectively. Abbreviations: kdsD,  
6 kpsF, arabinose-5-phosphate isomerase; kdsA, 2-dehydro-3-deoxyphosphooctonate aldolase; kdsC,  
7 3-deoxy-D-manno-octulosonate 8-phosphate phosphatase; kdsB, 3-deoxy-manno-octulosonate  
8 cytidyltransferase; lpxA, UDP-N-acetylglucosamine acyltransferase; lpxC, UDP-3-O-[3-  
9 hydroxymyristoyl] N-acetylglucosamine deacetylase; lpxD, UDP-3-O-[3-hydroxymyristoyl]  
10 glucosamine N-acyltransferase; lpxC-fabZ, UDP-3-O-[3-hydroxymyristoyl] N-acetylglucosamine  
11 deacetylase / 3-hydroxyacyl-[acyl-carrier-protein] dehydratase; lpxH, UDP-2,3-diacetylglucosamine  
12 hydrolase; lpxB, lipid-A-disaccharide synthase; lpxK, tetraacyldisaccharide 4'-kinase; kdtA, waaA,  
13 3-deoxy-D-manno-octulosonic-acid transferase; lpxL, trB, Kdo2-lipid IVA lauroyltransferase; lpxM,  
14 sbB, lauroyl-Kdo2-lipid IVA myristoyltransferase.  
15



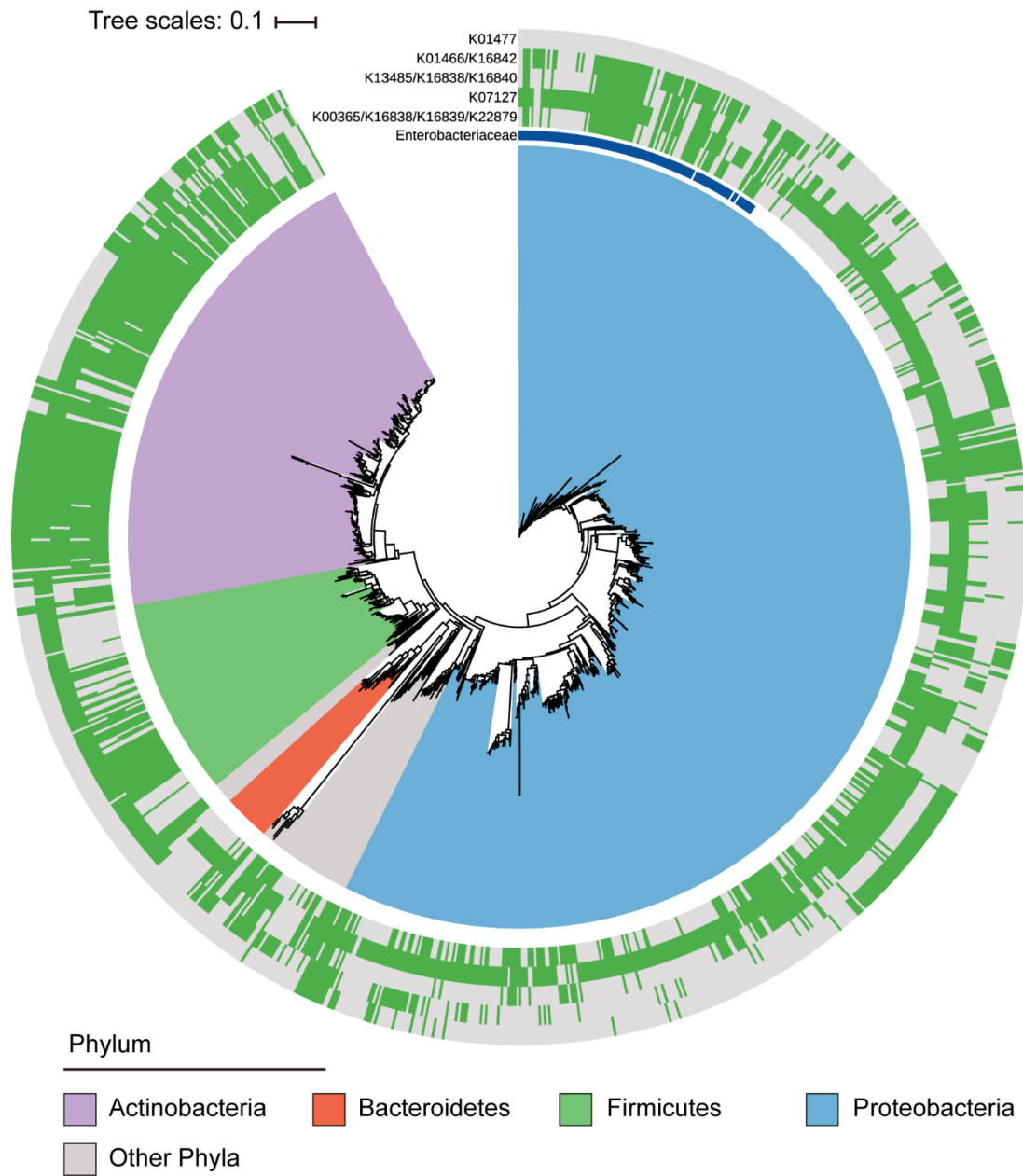


1

2 **Figure S5.** The associations between SUA and genera belonging to Enterobacteriaceae. Spearman

3 correlation was calculated by taking the species relative abundance and SUA content.

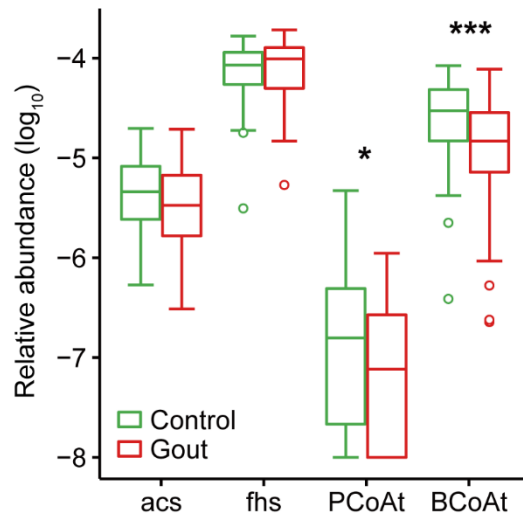
4



1

2 **Figure S6.** Urate degradation gene in bacteria. The tree represents 1,135 species which contain at  
 3 least one urate degradation gene in KEGG database (v79). Species belonging to Enterobacteriaceae  
 4 were labeled in the middle ring. Green color in the out ring denotes the presence of the genes in the  
 5 species alongside the tree.

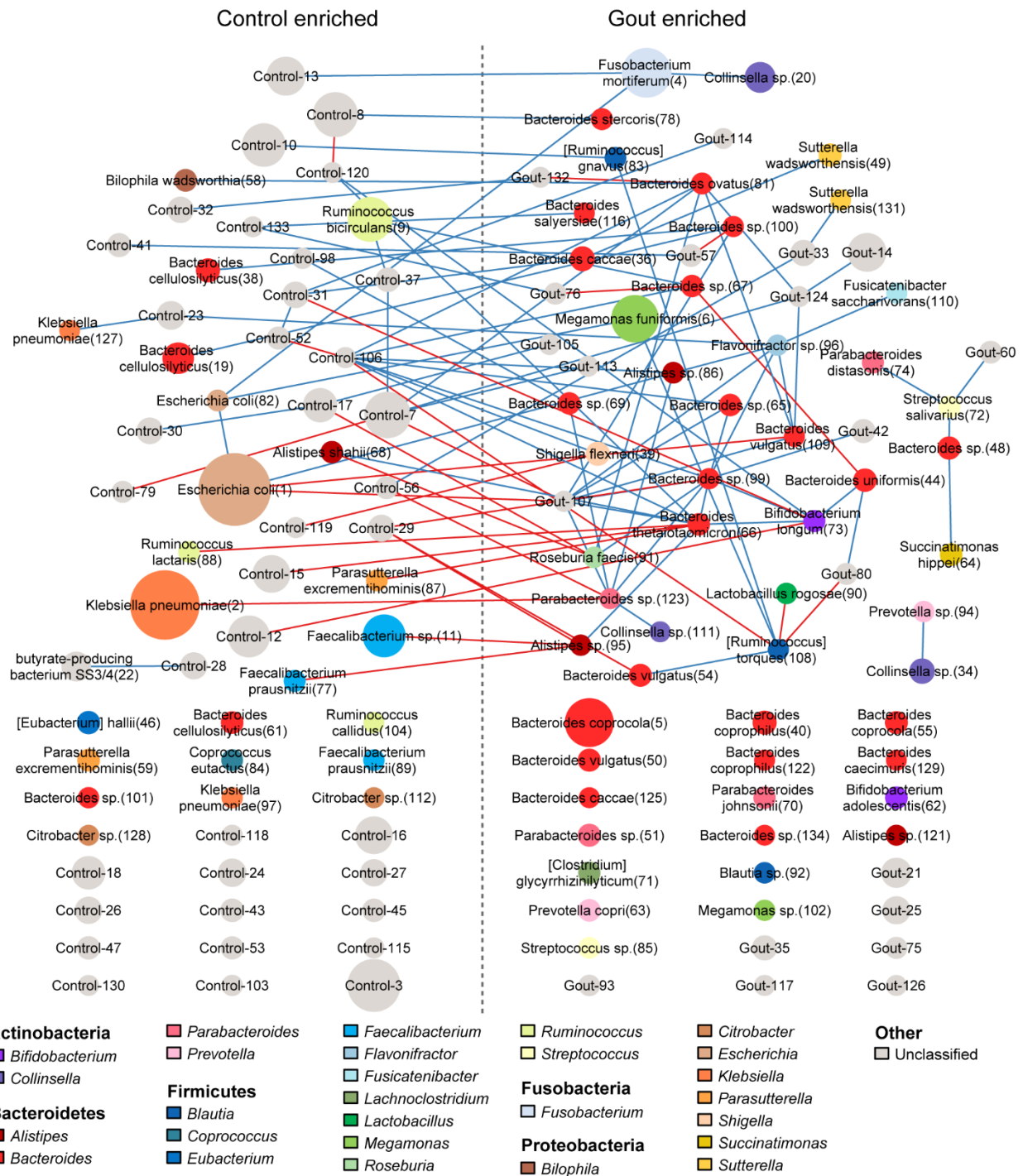
6



1

2 **Figure S7.** Relative abundance of genes related to acetate, propionate and butyrate in healthy controls  
 3 and gout patients. Wilcoxon rank-sum test was used to determine significance, ‘\*’ denotes  $P < 0.05$ ;  
 4 ‘\*\*\*’ denotes  $P < 0.01$ ; ‘\*\*\*\*’ denotes  $P < 0.001$ . Abbreviation: acs, O dehydrogenase/acetyl-CoA  
 5 synthase complex; fhs, formate-tetrahydrofolate ligase; PCoAt, propionate CoA-  
 6 transferase/propionyl-CoA:succinate-CoA transferase; BCoAt, butyryl-CoA transferase.

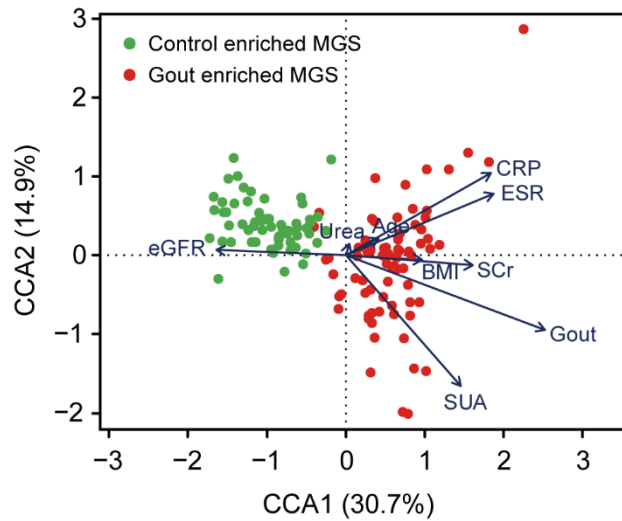
7



1

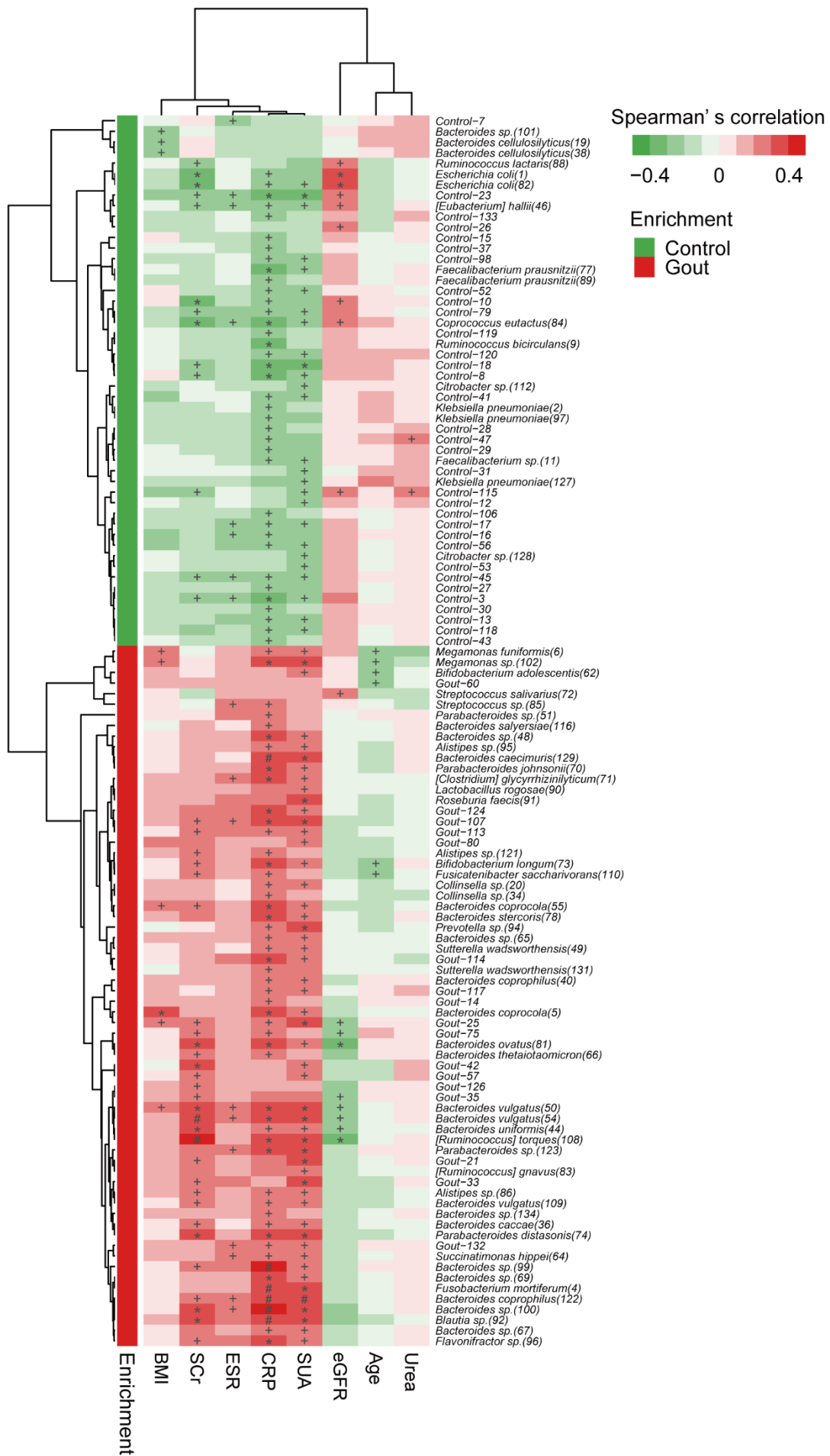
2 **Figure S8.** Co-occurrence network of gut MGS in the healthy controls and gout patients. MGS  
 3 enrichment was determined by Wilcoxon rank-sum test (FDR < 0.05). Nodes were colored according  
 4 to genus. Size of the nodes scales with the number of genes in the MGS. Blue and red edges represent  
 5 positive and negative correlation, respectively (SparCC, pseudo P < 0.01). The edges width denotes  
 6 the strength of the correlation.

7



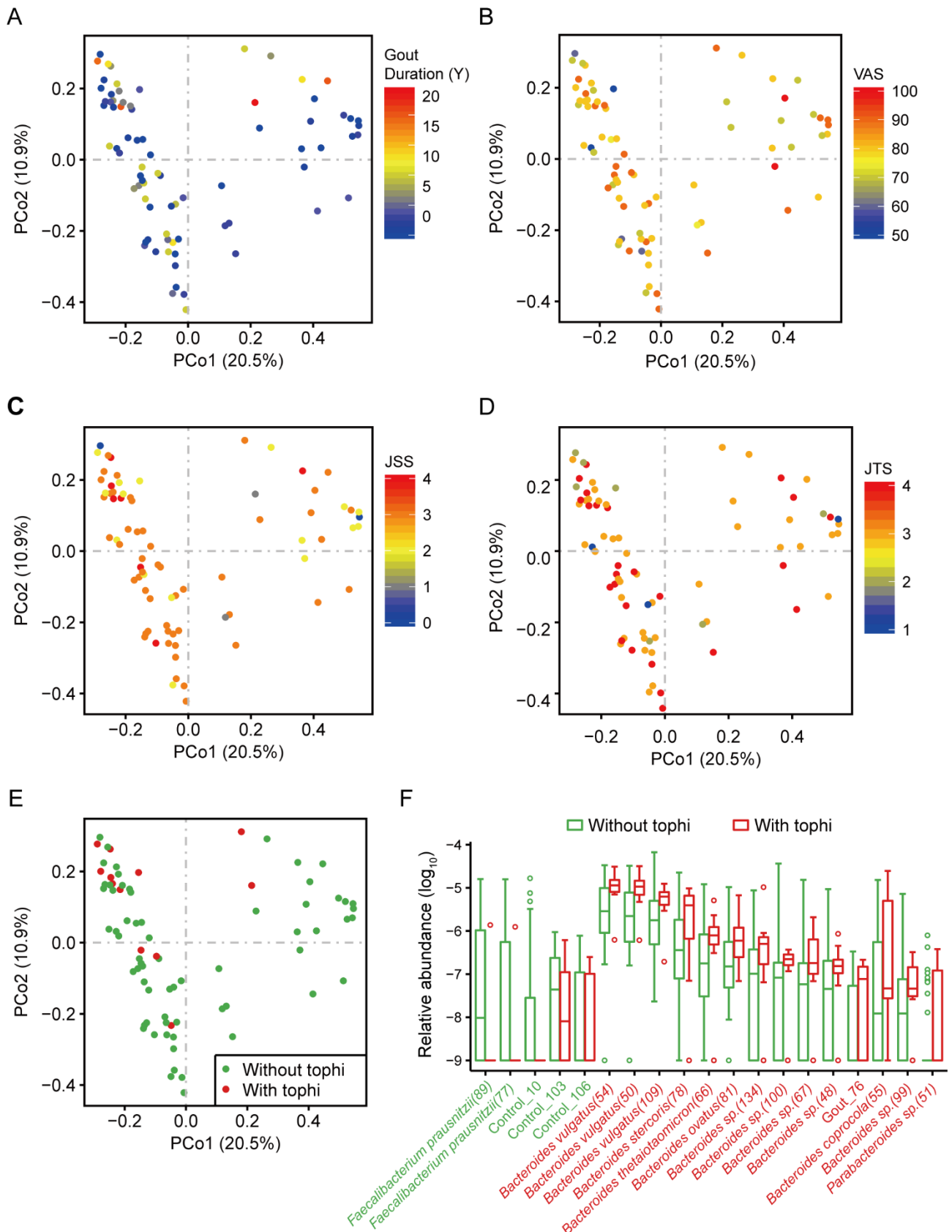
1  
 2 **Figure S9.** Biplot of canonical correspondence analysis (CCA) for influence of phenotype on the gut  
 3 microbiome. Individuals missing phenotype value were excluded (52 and 75 samples were retained  
 4 in healthy controls and gout patients, respectively). The points were colored by direction of  
 5 enrichment. Green, healthy controls enriched MGS; red, gout patients enriched MGS.

6



1 **Figure S10.** Correlation between gut microbiome and clinical indices. Heat map of spearman's  
2 correlation coefficient between 116 MGSs ( $\geq 50$  genes) and clinical indices (red and green for positive  
3 and negative correlation, respectively) in the discovery cohort (healthy control, n = 63; gout patient,  
4 n = 77). 18 MGSs which did not have any significant correlations with clinical indices were not shown  
5 in the heat map. MGSs in green and red denote healthy control-enriched and gout patient-enriched,  
6 respectively. '+' denotes FDR < 0.05; '\*' denotes FDR < 0.01; '#' denotes FDE < 0.001. Abbreviation:  
7 BMI, body mass index; CRP, C-reactive protein; eGFR, estimated glomerular filtration rate; ESR,  
8 erythrocyte sedimentation rate; SCr, serum creatinine; SUA, serum uric acid.

9



1

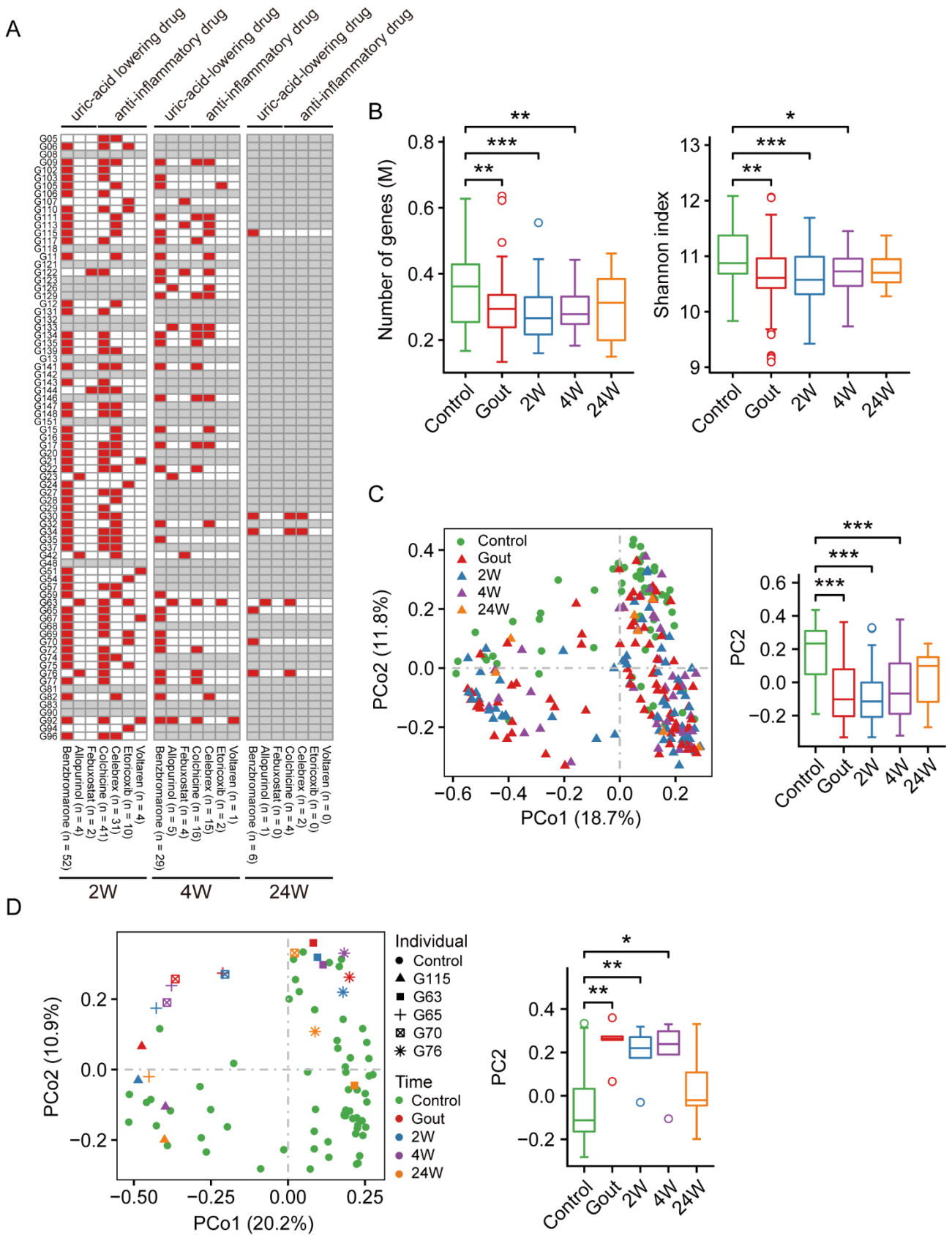
2 **Figure S11.** Gut MGSs were influenced by gout-associated indices. (A, B, C, D, E) Principal  
 3 coordinates analysis (PCoA) based on Bray-Curtis distance of gut MGS in gout patients (n = 77).

4 Color in A, B, C and D indicates the value of gout duration, visual analog scale (VAS), joint swelling



1 scores (JSS) and joint tenderness scores (JTS), respectively. Color in E indicates gout patients with  
2 (red, n = 12) or without (green, n = 65) tophi. (F) Different MGSs between gout patients with or  
3 without tophi. MGSs in color green and red indicate healthy control-enriched and gout patient-  
4 enriched (Wilcoxon rank-sum test,  $P < 0.05$ ), respectively.

5

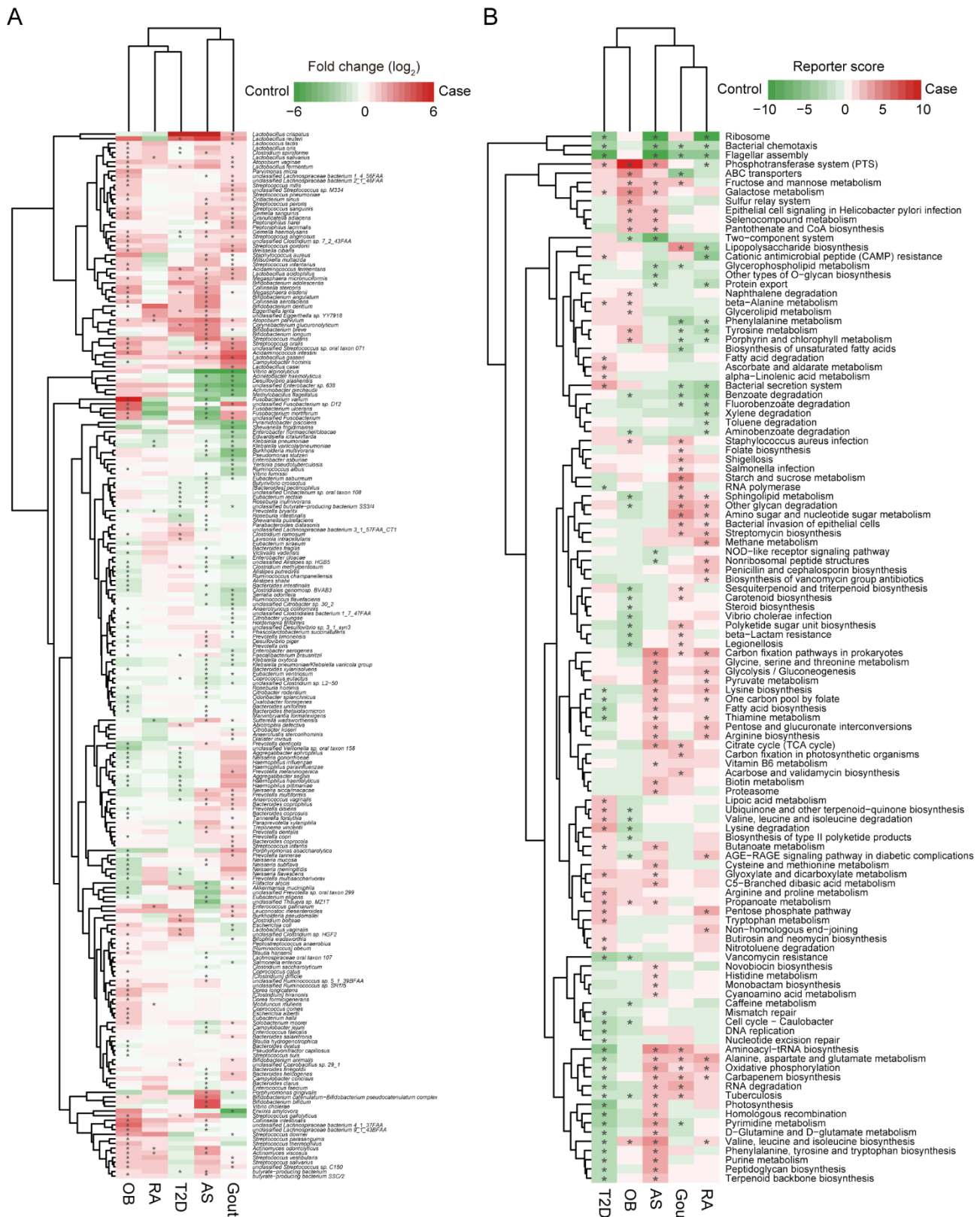


1

2 **Figure S12.** Gut MGSs were influenced by medication. (A) Medication and sample collection at  
 3 different time points of 77 gout patients (2W, n = 70; 4W, n = 40; 24W, n = 9). Rows and columns  
 4 represent individuals and drugs, respectively. Red and white color denote individuals using drugs or

1 not, and gray denotes fecal samples that were not collected for metagenomics sequencing. (B) Box  
2 and whisker plot of gene count and alpha-diversity (Shannon index) in all samples. (C) PCoA based  
3 on Bray-Curtis distance of gut MGS in all samples. (D) PCoA based on Bray-Curtis distance of gut  
4 MGS in 66 healthy controls and 5 gout patients whose sample were collected at four time points. (E)  
5 PCoA based on Bray-Curtis distance of gut MGS in 5 gout patients at four time points. Wilcoxon  
6 rank-sum test was used to determine significance, ‘\*’ denotes  $P < 0.05$ ; ‘\*\*’ denotes  $P < 0.01$ ; ‘\*\*\*’  
7 denotes  $P < 0.001$ .

8



**Figure S13.** Comparison of gut microbial functions and species in different diseases. (A) Comparison of differential species in AS, gout, OB, RA and T2D. Green, enriched in healthy controls; red, enriched in patients. (B) Comparison of microbial gene functions in AS, gout, OB, RA and T2D. Green, enriched in healthy controls; red, enriched in patients. “\*” denotes reporter score of map > 1.65

1 or  $< -1.65$ .