

Online tables and figures

Table S1: BNF Codes (Chapter.Section.Paragraph.Subparagraph), headings and example drugs.

BNF Codes	Headings	Example drugs
2	Cardiovascular system	
2.1	Positive Inotropic	Digoxin, Enoximone
2.2	Diuretics	Bumetanide, furosemide
2.2.1	Thiazides and related diuretics	Bendroflumethiazide, Cyclopenthiazide
2.3	Anti-arrhythmic drugs	Adenosine
2.4	Beta-adrenoceptor blocking drugs	Atenolol, Propranolol, Pindolol
2.5.5	Drugs Affecting the renin-angiotensin system	
2.5.5.1	Angiotensin-converting enzyme inhibitors	Captopril, Enalapril maleate, Lisinopril
2.5.5.2	Angiotensin-II receptor antagonists	Candesartan Cilexetil, Losartan potassium
2.5.5.3	Renin Inhibitors	Aliskiren
2.6	Nitrates, calcium-channel blockers, and other antianginal drugs	
2.6.1	Nitrates	Isosorbide Mononitrate
2.6.2	Calcium-channel blockers	Amlodipine, Felodipine, Nifedipine
2.6.3	Other antianginal drugs	Ivabradine
2.6.4	Peripheral vasodilators and related drugs	Cilostazol, Moxisylyte
2.9	Antiplatelet drugs	Asprin, Clopidogrel
2.12	Lipid-regulating drugs	Pravastatin sodium
4	Central nervous system	
4.1	Hypnotics and anxiolytics	Benzodiazepines
4.2	Drugs used in psychoses and related disorders	Clozapine, Benperidol
4.3	Antidepressant drugs	Selective serotonin re-uptake inhibitors, Tricyclics
6	Endocrine System	
6.1.2	Antidiabetic drugs	Sulfonylureas, Biguanides

Table S2: Descriptive statistics for unmatched cohort 1 members

	Thiazide diuretics	Beta Blockers	Angiotensin Antagonists	Calcium Channel Blockers	Polytherapy	Other Antiypertensives
N of observations	13,001	15,721	28,536	15,996	130,443	16,683
Gender	%	%	%	%	%	%
Male	32.3	50.9	51.8	49.3	49.1	36.0
Female	67.7	49.1	48.2	50.7	50.9	64.1
Survival Events						
Treatment for depression	26.6	25.6	26.6	25.0	25.6	27.2
Treatment for Bipolar disorder Yes	7.3	8.0	7.2	7.3	6.6	9.7
Died	28.4	34.9	35.3	35.6	32.7	52.3
Changed therapy	47.7	36.2	39.4	39.1	0.0	0.0
History of hospital treatment						
Cardiovascular disease	8.0	41.4	27.0	24.0	32.9	30.5
Head Injury	1.4	1.5	1.6	1.8	1.4	1.7
Substance abuse	0.8	1.3	1.1	1.4	1.1	1.1
Self-harm	0.0	0.1	0.1	0.1	0.0	0.1
History of pharmaceutical treatment						
Other Cardiovascular meds	53.8	77.8	77.0	68.3	79.8	69.5
Diabetic Drugs	4.1	5.8	18.1	5.4	14.3	9.7
Age						
Mean	76.9	76.4	76.1	76.8	76.2	79.6
SD	7.2	7.8	7.7	7.7	7.0	7.8
SIMD						
Mean	5.4	5.3	5.2	5.2	5.2	5.2
SD	2.7	2.7	2.7	2.7	2.7	2.7

Table S3: Descriptive statistics for unmatched cohort 2 members

	Thiazide diuretics	Beta Blockers	Angiotensin Antagonists	Calcium Channel Blockers	Polytherapy	Other Antihypertensives
N of observations	10,125	22,292	27,999	15,916	98,283	23,717
	<i>Categorical variables</i>					
	%	%	%	%	%	%
Gender						
Male	20.4	38.5	41.8	36.5	40.9	29.8
Female	79.6	61.5	58.2	63.5	59.1	70.2
Survival Events						
Treatment for MDD	74.4	73.9	73.1	71.7	72.3	69.6
Treatment for Bipolar disorder	14.2	16.0	14.2	16.2	11.6	19.1
Died	28.8	28.5	34.1	37.2	30.3	52.5
Changed therapy	45.1	28.4	37.6	35.1	0.0	0.0
History of hospitalization						
Cardiovascular	12.4	34.0	31.4	33.7	41.1	34.2
Substance Abuse	9.6	18.2	15.7	16.9	16.8	17.9
Head injury	2.3	4.4	3.8	4.2	3.3	3.7
Self Harm	2.3	5.0	3.0	3.3	2.7	3.1
Schizophrenia	1.8	2.4	1.9	2.2	1.4	2.7
Major Depressive Disorder	6.2	9.6	8.0	8.4	6.3	9.9
Bipolar Disorder	1.0	1.6	1.3	1.5	0.8	1.4
Other mood disorder	1.0	1.7	1.4	1.7	1.1	1.6
Personality disorder	0.6	1.4	0.8	1.1	0.7	1.1
History of prescriptions						
Cardiovascular	53.1	62.2	75.5	70.9	81.2	66.3
Diabetic drugs	5.1	6.3	20.1	6.7	16.4	10.1
hypnotics	41.4	44.3	38.5	42.6	39.2	46.0
Antidepressants	68.1	68.2	66.8	65.2	64.4	64.7
Psychoses and related drugs	7.2	9.3	7.1	8.4	4.8	11.4
	<i>Continuous Variables</i>					
Age						
Mean	71.5	66.7	69.5	71.7	69.9	74.2
SD	10.3	13.1	11.3	10.6	10.0	11.5
SIMD						
Mean	4.9	4.7	4.7	4.6	4.7	4.8
SD	2.8	2.8	2.7	2.7	2.7	2.7

“Other Antihypertensives” were defined on the basis of treatment with a combination of thiazide diuretics, diuretics, BBs, AA and/or CCBs, but not treatment with at least two of these groups within in the last 3 months of the eligible treatment window.

Table S4: Frequency and percentage of the various combination of prescriptions in the “Other Antihypertensives” class

Other Diuretics	Thiazide diuretics	Beta Blockers	Angiotensin Antagonists	Calcium Channel Blockers	Cohort 1		Cohort 2	
					N.	%	N.	%
0	0	0	1	1	4,624	11.62	1,945	5.68
0	0	1	0	1	1,482	3.72	1,293	3.77
0	0	1	1	0	2,588	6.50	1,797	5.25
0	0	1	1	1	315	0.79	187	0.55
0	1	0	0	1	1,915	4.81	679	1.98
0	1	0	1	0	2,493	6.26	846	2.47
0	1	0	1	1	674	1.69	262	0.76
0	1	1	0	0	635	1.60	422	1.23
0	1	1	0	1	102	0.26	61	0.18
0	1	1	1	0	258	0.65	92	0.27
0	1	1	1	1	94	0.24	58	0.17
1	0	0	0	0	15,652	39.33	18,870	55.09
1	0	0	0	1	1,030	2.59	985	2.88
1	0	0	1	0	2,583	6.49	1,986	5.80
1	0	0	1	1	391	0.98	220	0.64
1	0	1	0	0	2,792	7.01	2,953	8.62
1	0	1	0	1	155	0.39	119	0.35
1	0	1	1	0	427	1.07	250	0.73
1	0	1	1	1	67	0.17	41	0.12
1	1	0	0	0	833	2.09	812	2.37
1	1	0	0	1	139	0.35	77	0.22
1	1	0	1	0	270	0.68	139	0.41
1	1	0	1	1	89	0.22	30	0.09
1	1	1	0	0	110	0.28	92	0.27
1	1	1	0	1	21	0.05	12	0.04
1	1	1	1	0	39	0.10	17	0.05
1	1	1	1	1	23	0.06	11	0.03

NB 0 and 1 indicated absence or presence of a particular antihypertensive treatment

Table S5: Sociodemographic and medical event and comorbidity variables that are available for both cohorts

	Controls	Thiazide diuretics (Thiazide)		Beta Blockers (BB)		Angiotensin Antagonists (AA)		Calcium Channel Blockers (CCBs)		Polytherapy (Poly)		Other Antihypertensives	
	Cohort 2	Cohort 1	Cohort 2	Cohort 1	Cohort 2	Cohort 1	Cohort 2	Cohort 1	Cohort 2	Cohort 1	Cohort 2	Cohort 1	Cohort 2
Total sample size (n)	502,937	25,555	8,477	73,996	90,919	130,110	48,408	57,986	24,634	211,282	65,584	39,801	34,256
Gender													
Male (%)	52.8	29.8	21.4	44.2	44.7	60.3	46.2	53.7	39.2	56.4	48.4	40.9	33.7
Female (%)	15.6	70.2	78.6	55.8	15.0	39.7	53.8	46.3	60.8	43.6	51.6	59.1	66.3
Survival events													
Treatment for depression (%)	39.1	24.1	72.3	25.9	79.2	19.6	67.8	16.8	65.2	22.1	63.6	23.4	65.1
Treatment for Bipolar disorder (%)	8.0	2.7	10.6	1.7	11.6	1.4	8.3	2.0	9.9	2.1	7.3	4.4	15.5
Died (%)	9.6	8.7	12.5	5.6	4.6	5.1	7.2	7.1	9.8	8.9	9.4	22.1	9.8
Changed Therapy (%)	na	45.3	39.2	19.9	10.0	33.6	33.6	32.0	28.7	NA	NA	NA	NA
History of hospital treatment													
Cardiovascular disease (%)	3.7	4.5	9.5	13.9	8.0	7.3	13.2	7.5	13.7	21.1	34.4	15.6	18.8
Substance Abuse (%)	16.8	0.9	12.6	1.3	18.0	1.3	18.8	1.4	19.1	1.3	28.2	1.5	27.0
Head Injury (%)	5.8	1.6	3.6	3.0	6.1	3.1	5.2	2.4	4.7	2.3	5.2	2.5	5.5
Self-Harm (%)	7.5	0.2	4.6	0.4	11.2	0.3	6.2	0.3	6.1	0.2	5.6	0.3	8.0
History of Prescriptions													
Other Cardiovascular drugs (%)	14.3	39.2	40.8	39.7	21.2	45.8	51.1	44.3	49.6	60.6	64.3	48.3	45.5
Diabetic drugs (%)	2.2	3.3	4.6	3.2	2.6	15.4	17.8	3.9	4.9	11.1	9.8	7.3	7.6
Age													
Mean	52.8	64.9	62.2	53.4	44.7	56.3	54.4	63.9	61.2	61.2	57.1	66.6	62.5
SD	15.6	11.4	14.2	16.6	15.0	12.0	12.6	11.9	13.7	11.2	62.5	15.5	16.7
SIMD 2016													
Mean	4.8	5.8	5.2	5.6	4.6	5.7	4.9	5.7	4.9	5.6	4.9	5.5	4.7
SD	2.8	2.8	2.8	2.8	2.8	2.8	2.8	2.8	2.8	2.8	2.8	2.8	2.8
Matched comparators													
N with One	na	25,555	2,392	73,996	6,329	130,110	6,818	57,986	3,468	211,282	16,387	39,801	6,225
% with One	na	100.0	28.2	100.0	7.0	100.0	14.1	100.0	14.1	100.0	25.0	100.0	18.2
N with Two	na		6,085		84,590		41,590		21,166		49,197		27,031
% with Two	na		71.8		93.0		85.9		85.9		75.0		81.8

“Other Antihypertensives” were defined on the basis of treatment with a combination of thiazide diuretics, diuretics, BBs, AA and/or CCBs, but not treatment with at least two of these groups within in the last 3 months of the eligible treatment window.

Table S6: Medical event and comorbidity variables, cohort 2

	Comparison Group		Thiazide diuretics		Beta Blockers		Angiotensin Antagonists		Calcium Channel Blockers		Polytherapy		Other Antihypertensives	
	n	%	n	%	n	%	n	%	n	%	n	%	n	%
Total	502,937	100	8,477	100	90,919	100	48,408	100	24,634	100	65,584	100	34,256	100
Survival events														
Treatment for depression	196,587	39.1	6,127	72.3	72,024	79.2	32,794	67.8	16,054	65.2	41,685	63.6	22,289	65.1
Treatment for Bipolar	39,998	8.0	900	10.6	10,543	11.6	4,018	8.3	2,445	9.9	4,817	7.3	5,321	15.5
Died	48,313	9.6	1,055	12.5	4,154	4.6	3,494	7.2	2,404	9.8	6,168	9.4	26,644	9.8
Changed Therapy			3,323	39.2	9,101	10.0	16,250	33.6	7,065	28.7				
History of hospital														
Cardiovascular disease	18,452	3.7	801	9.5	7,245	8.0	6,368	13.2	3,380	13.7	22,541	34.4	6,435	18.8
Substance Abuse	84,585	16.8	1,068	12.6	16,402	18.0	9,116	18.8	4,694	19.1	18,479	28.2	9,264	27.0
Head Injury	29,036	5.8	303	3.6	5,552	6.1	2,517	5.2	1,167	4.7	3,403	5.2	1,870	5.5
Self-harm	37,894	7.5	389	4.6	10,182	11.2	3,016	6.2	1,491	6.1	3,692	5.6	2,738	8.0
Schizophrenia	14,363	2.9	176	2.1	1,981	2.2	1,172	2.4	582	2.4	1,069	1.6	1,035	3.0
Major Depressive Disorder	34,607	6.9	594	7.0	8,542	9.4	3,760	7.8	2,039	8.3	4,686	7.2	3,762	11.0
Bipolar Disorder	6,708	1.3	95	1.1	1,042	1.2	626	1.3	358	1.5	566	0.9	652	1.9
Other mood disorder	4,868	1.0	112	1.3	880	1.0	457	0.9	321	1.3	509	0.8	516	1.5
Personality disorder	7,019	1.4	94	1.1	1,847	2.0	620	1.3	342	1.4	761	1.2	744	2.2
History of Prescriptions														
Other Cardiovascular drugs	71,980	14.3	3,455	40.8	19,286	21.2	24,738	51.1	12,206	49.6	42,175	64.3	15,581	45.5
Diabetic drugs	10,920	2.2	387	4.6	2,366	2.6	8,608	17.8	1,217	4.9	6,405	9.8	2,588	7.6
Hypnotics and anxiolytics	220,526	43.9	3,805	44.9	50,315	55.3	20,721	42.8	11,641	47.3	26,868	41.0	18,279	53.4
Antidepressant Drugs	347,152	69.0	6,370	75.1	76,640	84.3	35,738	73.8	18,444	74.9	42,813	65.3	24,591	71.8
Psychoses and related	40,190	8.0	591	7.0	8,081	8.9	3,251	6.7	1,940	7.9	3,091	4.7	4,112	12.0

“Other Antihypertensives” were defined on the basis of treatment with a combination of thiazide diuretics, diuretics, BBs, AA and/or CCBs, but not treatment with at least two of these groups within in the last 3 months of the eligible treatment window.

Table S7: Number at risk at start of year, and number of first new onset of Major depressive disorder and Bipolar disorder

	Year 1 N at Risk (N Failures)	Year 2 N at Risk (N Failures)	Year 3 N at Risk (N Failures)	Year 4 N at Risk (N Failures)	Year 5 N at Risk (N Failures)	Year 6 N at Risk (N Failures)	Year 7 N at Risk (N Failures)
Cohort 1							
Major Depressive Disorder							
Comparison	538730 (23057)	469614 (18799)	405964 (15074)	348452 (12655)	295710 (11032)	246646 (7756)	202096 (5667)
Thiazide Diuretics	25555 (1297)	19930 (957)	15961 (698)	12725 (524)	10143 (421)	7854 (285)	5797 (204)
Beta Blockers	73996 (6619)	55273 (3655)	42852 (2464)	33293 (1740)	25418 (1285)	18904 (755)	13763 (477)
Angiotensin Antagonists	130110 (5909)	98380 (4156)	77952 (2999)	61780 (2313)	48515 (1829)	37245 (1214)	27673 (802)
Calcium Channel Blockers	57986 (2496)	40413 (1716)	29628 (1129)	21775 (786)	15811 (618)	11172 (372)	7822 (230)
Poltherapy	211282 (10860)	188908 (8799)	168167 (7177)	149290 (6138)	131551 (5716)	114360 (4566)	98269 (3448)
Other Antihypertensives	39801 (2855)	31517 (2050)	25094 (1438)	19962 (1147)	15645 (876)	12004 (589)	8829 (356)
Bipolar Disorder							
Comparison	538730 (2251)	489992 (2159)	440705 (1949)	392433 (1685)	345094 (1554)	298844 (1224)	252665 (883)
Thiazide Diuretics	2555 (74)	21007 (84)	17658 (73)	14701 (76)	12162 (75)	9772 (44)	7462 (46)
Beta Blockers	73996 (213)	61040 (212)	50672 (157)	41528 (159)	33248 (131)	25791 (102)	19192 (59)
Angiotensin Antagonists	130110 (198)	103316 (248)	85318 (219)	70153 (180)	57039 (165)	45252 (149)	34695 (95)
Calcium Channel Blockers	57986 (166)	42408 (157)	32547 (158)	24803 (119)	18640 (94)	13684 (79)	9911 (55)
Poltherapy	211282 (456)	198948 (556)	185439 (600)	171613 (647)	157346 (728)	142594 (695)	127244 (630)
Other Antihypertensives	39801 (432)	33924 (375)	28839 (307)	24304 (217)	20179 (175)	16380 (142)	12710 (79)
Cohort 2							
Major Depressive Disorder							
Comparison	502937 (166159)	275860 (11728)	218451 (7164)	170967 (4726)	129132 (3440)	91605 (2078)	58853 (1169)
Thiazide Diuretics	8477 (4966)	2597 (296)	1805 (176)	1253 (110)	836 (75)	545 (33)	322 (18)
Beta Blockers	90919 (63722)	20930 (3537)	13601 (1739)	9026 (951)	5969 (585)	3719 (292)	2150 (123)
Angiotensin Antagonists	48408 (26766)	15301 (1802)	10270 (894)	6975 (548)	4628 (343)	2960 (167)	1693 (77)
Calcium Channel Blockers	24634 (13459)	7286 (806)	4621 (413)	2865 (223)	1668 (137)	935 (55)	498 (25)
Poltherapy	65584 (33393)	28086 (3198)	21291 (1967)	16279 (1358)	11977 (920)	8413 (521)	5561 (322)
Other Antihypertensives	34256 (19109)	11063 (1417)	7350 (789)	4912 (458)	3204 (276)	1966 (144)	1094 (68)
Bipolar Disorder							
Comparison	502937 (31457)	388591 (3252)	317545 (1934)	254160 (1365)	195952 (948)	142943 (563)	95775 (330)
Thiazide Diuretics	9477 (541)	6198 (76)	4905 (59)	3881 (47)	2952 (42)	2147 (25)	1393 (6)
Beta Blockers	90919 (7064)	68267 (1156)	53520 (796)	41064 (506)	30536 (374)	21133 (208)	13526 (128)
Angiotensin Antagonists	48408 (2794)	33754 (287)	25648 (207)	19083 (154)	13817 (91)	9561 (64)	6150 (27)
Calcium Channel Blockers	24634 (1686)	15998 (199)	11484 (135)	7937 (78)	5267 (51)	3372 (39)	2010 (20)
Poltherapy	65584 (2889)	55916 (539)	48307 (385)	41137 (333)	34066 (288)	27117 (228)	20662 (145)
Other Antihypertensives	34256 (3822)	24054 (557)	18742 (360)	14474 (239)	10787 (176)	7660 (91)	4904 (41)

“Other Antihypertensives” were defined on the basis of treatment with a combination of thiazide diuretics, diuretics, BBs, AA and/or CCBs, but not treatment with at least two of these groups within in the last 3 months of the eligible treatment window.

Figure S1. Flow chart for derivation of cohort 1 sample

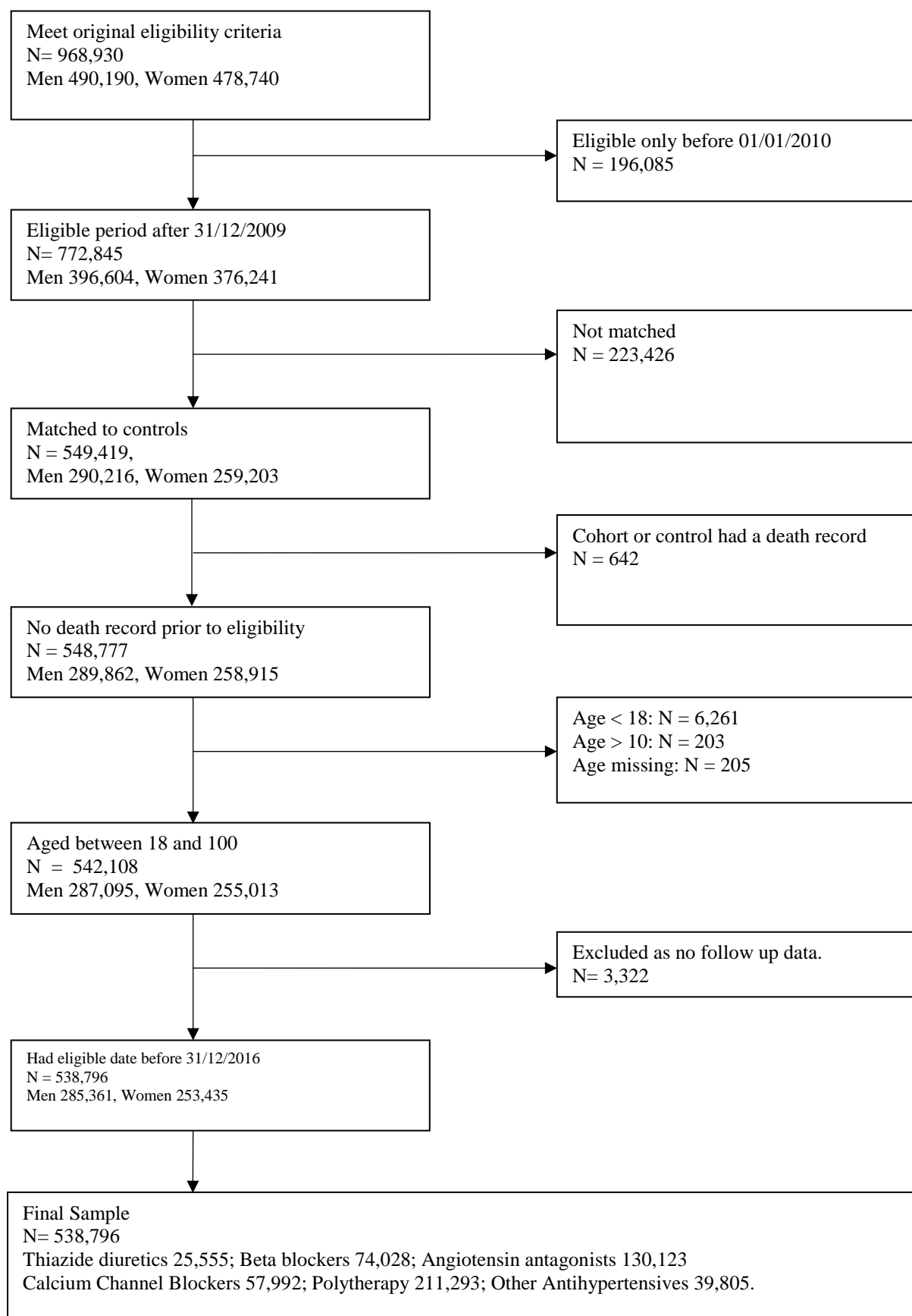


Figure S2: Flow chart for derivation of cohort 2 sample

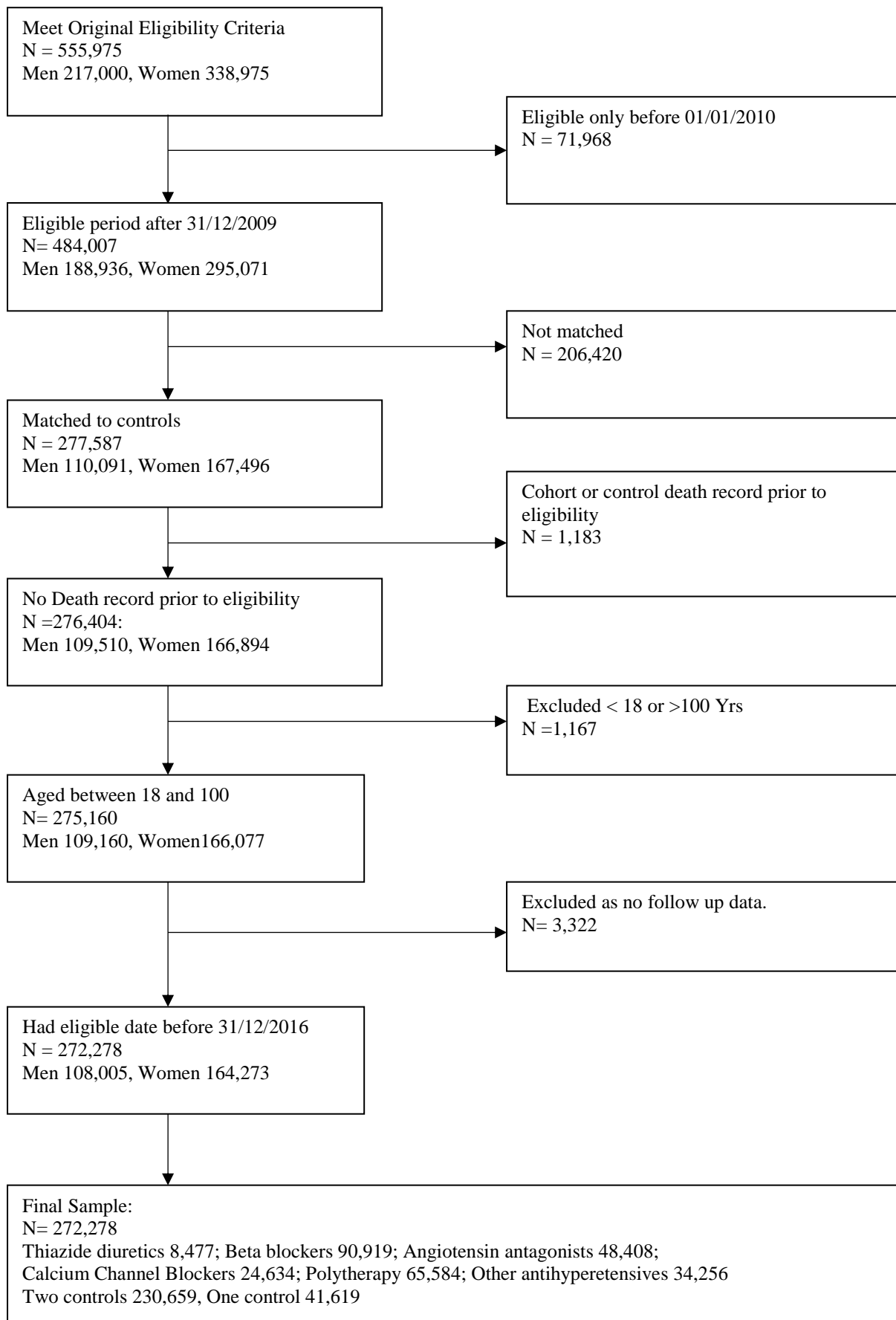
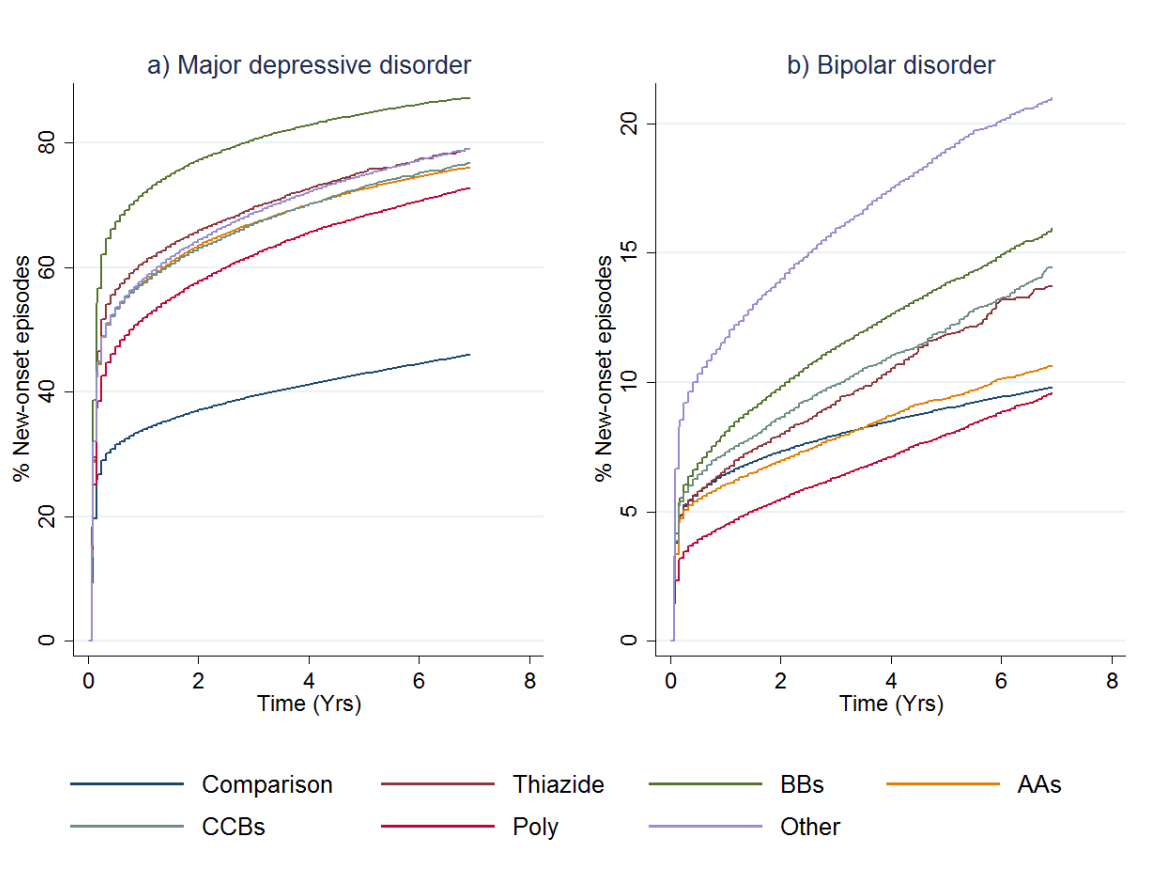


Figure S3: First onset of mood disorders, as indicated by receipt of prescriptions or admission to hospital, by therapy class (people with mental illness).



AA – Angiotensin Antagonists, BB – Beta Blockers, CCB – Calcium Channel Blockers

Figure S3 shows cumulative distributions functions for major depressive disorder (panel a) and bipolar disorder (panel b) by therapy class for people with a history of treatment for mental illness (cohort 2). “Other Antihypertensives” were defined on the basis of treatment with a combination of thiazide diuretics, diuretics, BBs, AA and/or CCBs, but not treatment with at least two of these groups within in the last 3 months of the eligible treatment window.

Figure S4: Hazard ratios for new onset depression, as indicated by receipt of prescriptions or admission to hospital, by therapy class (men without mental illness).

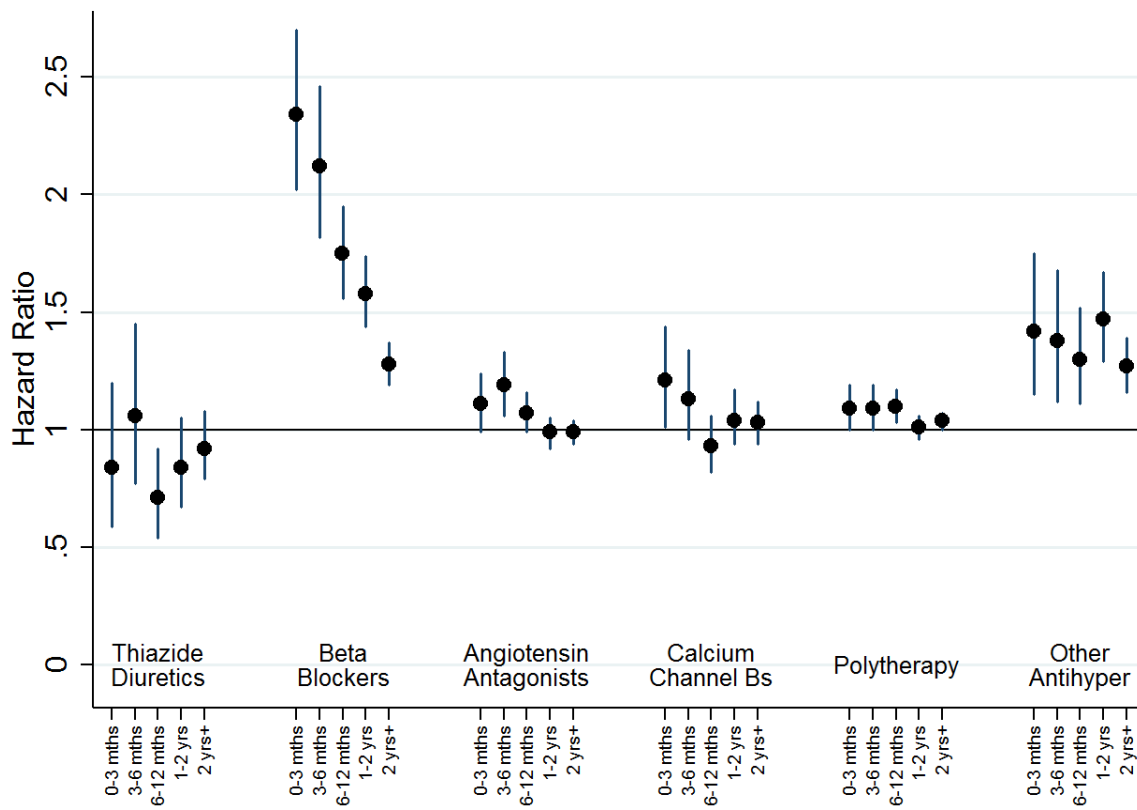


Figure S4 shows hazard ratios for new onset depression by therapy class for men without a history of treatment for mental illness (Cohort 1). Adjustment was carried out for hospital treatment for cardiovascular disease, substance abuse, head injury, self-harm, and pharmaceutical treatment for other cardiovascular drugs and diabetic drugs. “Other Antihypertensives” were defined on the basis of treatment with a combination of thiazide diuretics, diuretics, BBs, AA and/or CCBs, but not treatment with at least two of these groups within in the last 3 months of the eligible treatment window.

Figure S5: Hazard ratios for new onset depression, as indicated by receipt of prescriptions or admission to hospital, by therapy class (women without mental illness).

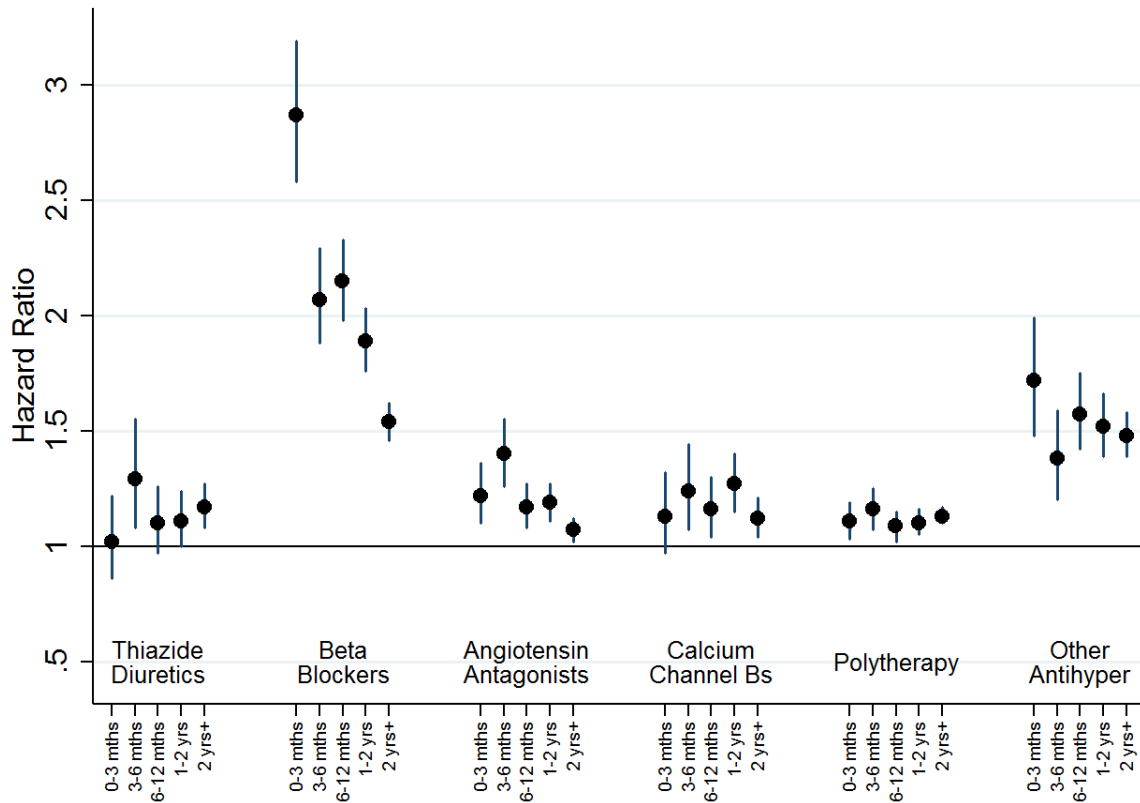


Figure S5 shows hazard ratios for new onset depression by therapy class for women without a history of treatment for mental illness (Cohort 1). Adjustment was carried out for hospital treatment for cardiovascular disease, substance abuse, head injury, self-harm, and pharmaceutical treatment for other cardiovascular drugs and diabetic drugs. “Other Antihypertensives” were defined on the basis of treatment with a combination of thiazide diuretics, diuretics, BBs, AA and/or CCBs, but not treatment with at least two of these groups within in the last 3 months of the eligible treatment window.

Figure S6: Hazard ratios for new onset depression, as indicated by receipt of prescriptions or admission to hospital, by therapy class (people with mental illness).

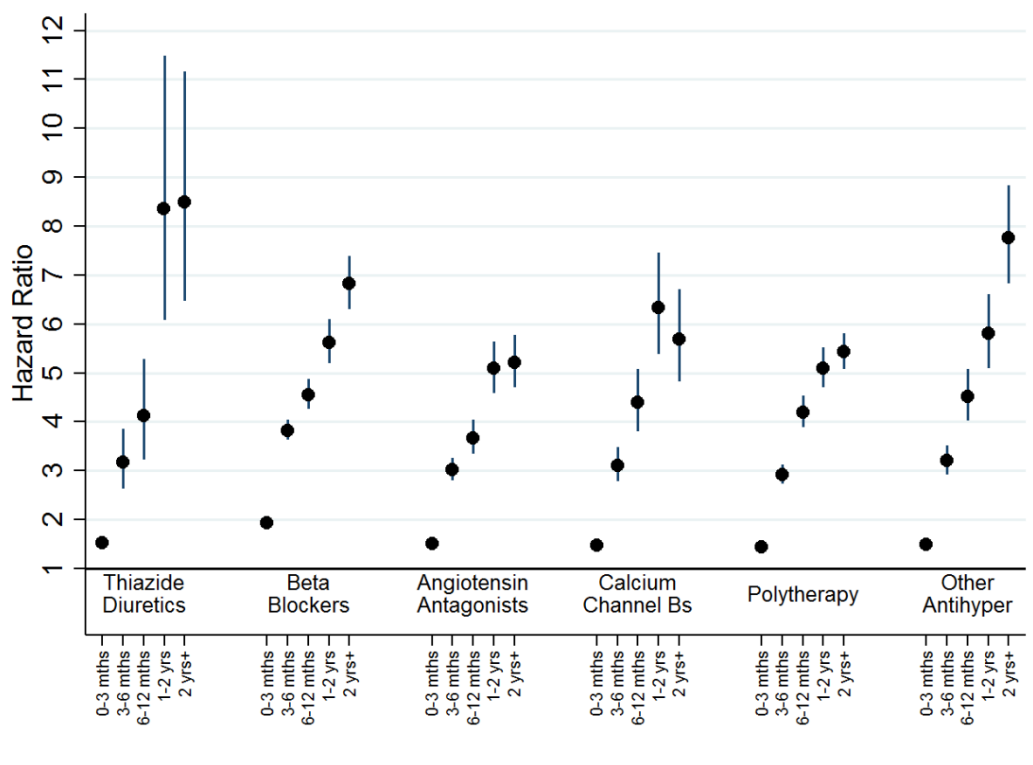


Figure S6: shows hazard ratios for new onset depression by therapy class for people without a history of treatment for mental illness (Cohort 2). Adjustment was carried out for hospital treatment for cardiovascular disease, substance abuse, head injury, self-harm, schizophrenia, major depressive disorder, bipolar disorder, other mood disorders and personality disorder, and pharmaceutical treatment for other cardiovascular drugs, diabetic drugs, hypnotics and anxiolytics, antidepressant drugs, psychoses and related disorders. “Other Antihypertensives” were defined on the basis of treatment with a combination of thiazide diuretics, diuretics, BBs, AA and/or CCBs, but not treatment with at least two of these groups within in the last 3 months of the eligible treatment window.

Figure S7: Hazard ratios for new onset bipolar disorder, as indicated by receipt of prescriptions or admission to hospital, by therapy class (men without mental illness).

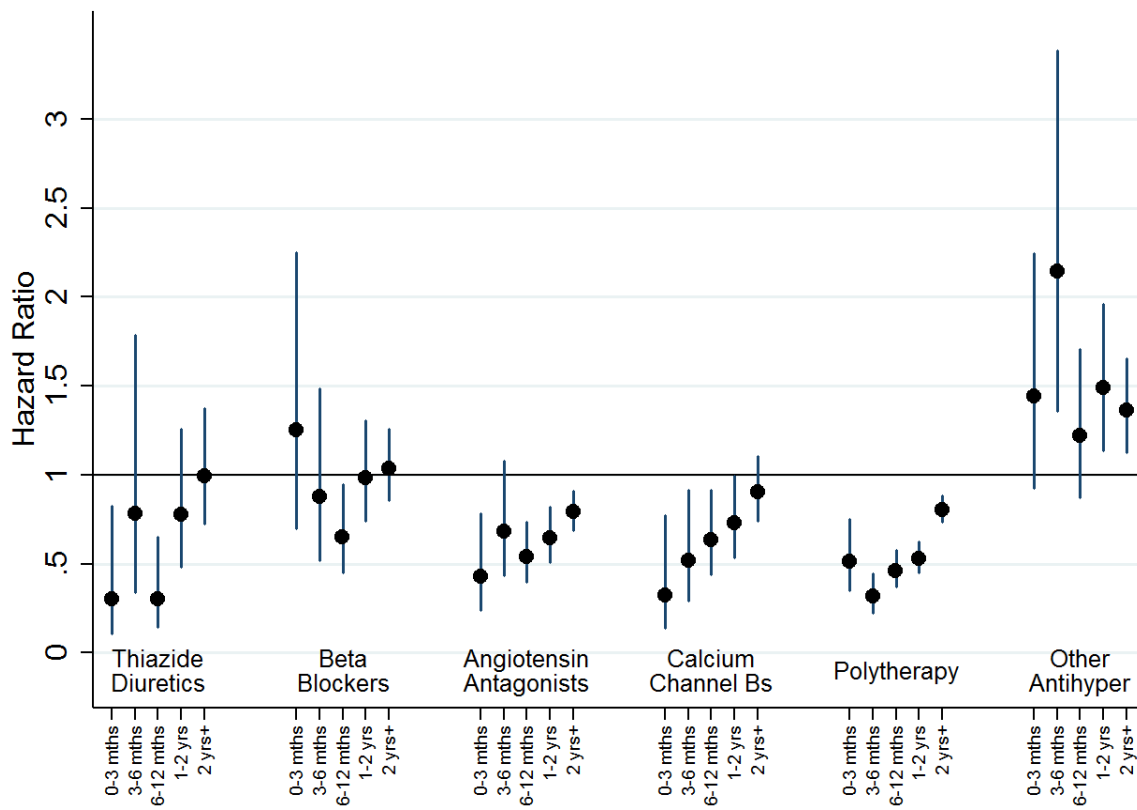


Figure S7 shows hazard ratios for new onset depression by therapy class for men without a history of treatment for mental illness (Cohort 1). Adjustment was carried out for hospital treatment for cardiovascular disease, substance abuse, head injury, self-harm, and pharmaceutical treatment for other cardiovascular drugs and diabetic drugs. “Other Antihypertensives” were defined on the basis of treatment with a combination of thiazide diuretics, diuretics, BBs, AA and/or CCBs, but not treatment with at least two of these groups within in the last 3 months of the eligible treatment window.

Figure S8: Hazard ratios for new onset bipolar disorder, as indicated by receipt of prescriptions or admission to hospital, by therapy class (women without mental illness).

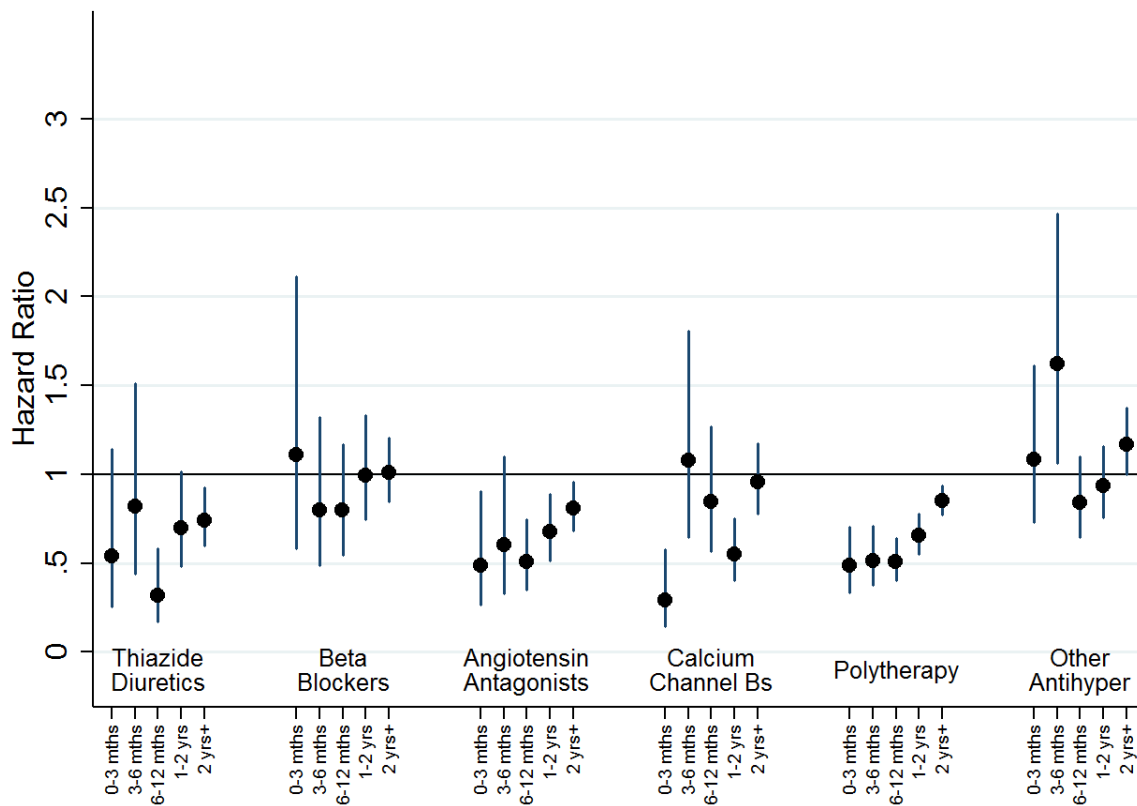


Figure S8 shows hazard ratios for new onset depression by therapy class for women without a history of treatment for mental illness (Cohort 1). Adjustment was carried out for hospital treatment for cardiovascular disease, substance abuse, head injury, self-harm, and pharmaceutical treatment for other cardiovascular drugs and diabetic drugs. “Other Antihypertensives” were defined on the basis of treatment with a combination of thiazide diuretics, diuretics, BBs, AA and/or CCBs, but not treatment with at least two of these groups within in the last 3 months of the eligible treatment window.

Figure S9: Hazard ratios for new onset bipolar disorder, as indicated by receipt of prescriptions or admission to hospital, by therapy class (people with mental illness).

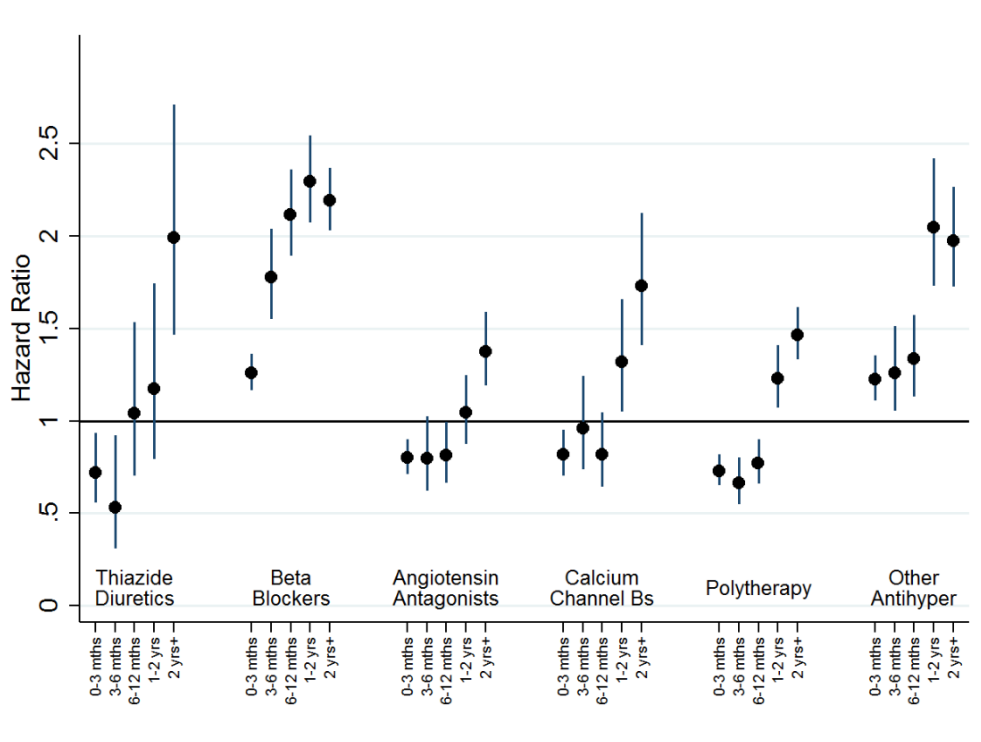


Figure S9 shows hazard ratios for new onset depression by therapy class for people without a history of treatment for mental illness (Cohort 2). Adjustment was carried out for hospital treatment for cardiovascular disease, substance abuse, head injury, self-harm, schizophrenia, major depressive disorder, bipolar disorder, other mood disorders and personality disorder, and pharmaceutical treatment for other cardiovascular drugs, diabetic drugs, hypnotics and anxiolytics, antidepressant drugs, psychoses and related disorders. “Other Antihypertensives” were defined on the basis of treatment with a combination of thiazide diuretics, diuretics, BBs, AA and/or CCBs, but not treatment with at least two of these groups within in the last 3 months of the eligible treatment window.