

---

## Supplementary Material for: Influence of sexual risk behaviour and STI co-infection dynamics on the evolution of HIV set point viral load in MSM.

Diana M Hendrickx<sup>1,\*</sup>, Wim Delva<sup>1,2,3,4,5,6</sup>, Niel Hens<sup>1,7</sup>,

**1 I-BioStat, Data Science Institute, Hasselt University, Hasselt, Belgium**

**2 The South African Department of Science and Technology-National Research Foundation (DST-NRF) Centre of Excellence in Epidemiological Modelling and Analysis (SACEMA), Stellenbosch University, Stellenbosch, South Africa**

**3 Department of Global Health, Faculty of Medicine and Health, Stellenbosch University, Stellenbosch, South Africa**

**4 International Centre for Reproductive Health, Ghent University, Ghent, Belgium**

**5 Rega Institute for Medical Research, KU Leuven, Leuven, Belgium**

**6 School for Data Science and Computational Thinking, Stellenbosch University, Stellenbosch, South Africa**

**7 Centre for Health Economics Research and Modelling Infectious Diseases, Vaccine & Infectious Disease Institute, University of Antwerp, Antwerp, Belgium**

\* [diana.hendrickx@uhasselt.be](mailto:diana.hendrickx@uhasselt.be)

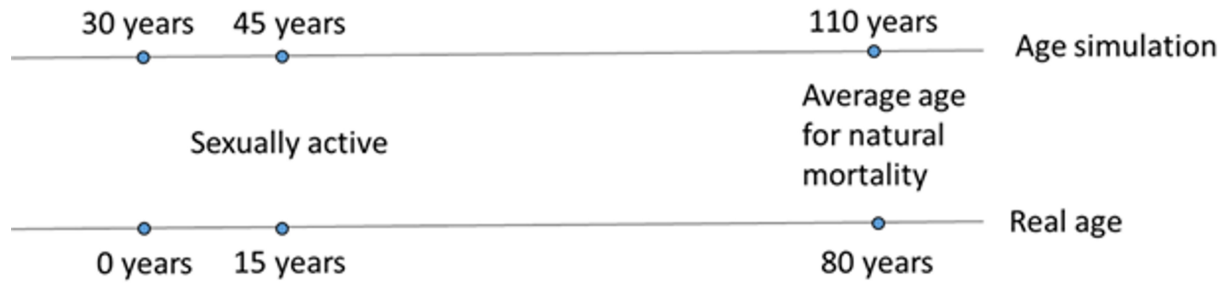
### Simpact Cyan 1.0

The models in this study were developed with Simpect Cyan 1.0, an open-source framework for individual-based modeling of transmission, diagnosis and treatment of HIV [8]. Simpect Cyan 1.0 models each individual in a population, as well as the sexual relationships between individuals. Birth, mortality, the formation and break-up of relationships as well as HIV transmission, diagnosis and treatment are represented by events. The risk that an event takes place at a certain moment is represented by its hazard function. Simpect Cyan 1.0 implements models in continuous time, i.e. each time an event happens the models are updated. Also a generic STI co-factor effect on HIV is implemented. Furthermore, parameters can be changed during the simulation to simulate interventions. More details on Simpect Cyan 1.0 are available in [8] and from <http://www.simpact.org/>.

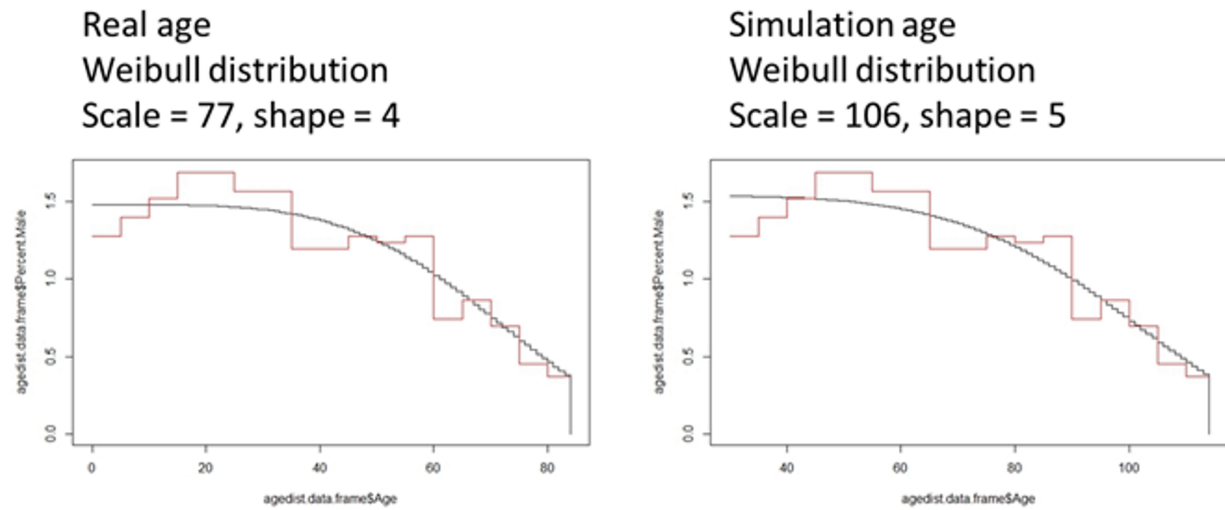
### Weibull distribution

Because we simulate a population of only men, where no birth events can happen, we have to avoid in the simulation that a lot mortality events caused by AIDS happen. We can implement this like indicated in Figure S1.

The population pyramid for males from Belgium in 1980 (<https://www.populationpyramid.net/belgium/1980/>) was used to fit the Weibull survival distribution. Figure S2 shows the survival distribution for real age and simulation age.



**Figure S1.** Real age versus simulation age in this study.



**Figure S2.** Weibull survival distribution for real age (left) and simulation age (right).

In the parameter configuration file, this is implemented as

- mortality.normal.weibull.scale = 106
- mortality.normal.weibull.shape = 5

## Other parameter settings

**Table S1.** Parameter settings used for all scenarios in this study.\*: only for scenarios including an STI co-factor effect.

parameter	value	explanation
mortality.normal.weibull.genderdiff	0	no females in the population
population.msm	yes	homosexual population
debut.debutage	45	45 = simulation age, 15 = real age (default)
population.simtime	45	stabilization period of 10 years + 1980 – 2015
population.nummen	10,000	population of 10,000 men

population.numwomen	0	no women in the population
population.maxevents	$\frac{\text{population.simtime}}{\text{population.nummen}} \times 15$	maximum 15 events per year happen to the same person
population.eyecap.fraction	0.2	Each men can have sexual contacts with 20% of all other men. Because of age-mixing etc, this will be only max. a few 100 in practice.
hsv2transmission.hazard.d*	0.76	effect of HIV on STI transmission, for HSV2 risk ratio = 2.14 [7]; $d = \ln(2.14) = 0.76$
hivseed.time	10	stabilization period of 10 years
hivseed.type	amount	a fixed number of seeders is chosen to start the HIV infection
hivseed.age.min	45	45 = simulation age, 15 = real age (equal to the default debut age)
hivseed.age.max	80	80 = simulation age, 50 = real age
hivseed.gender	male	HIV seeders are MSM
hivseed.amount	100	seed of 1% in 1980; start of HIV in MSM end 70's - begin 80's [10]
hsv2seed.time*	10	stabilization period of 10 years
hsv2seed.type*	amount	a fixed number of seeders is chosen to start the STI infection
hsv2seed.age.min*	45	45 = simulation age, 15 = real age (equal to the default debut age)
hsv2seed.age.max*	80	80 = simulation age, 50 = real age
hsv2seed.gender*	male	STI seeders are MSM
hsv2seed.amount*	1100	11% men with HSV2 in 1976 [4]
hivtransmission.param.e1	0.4700036	risk ratio = 1.6; $\ln(1.6)=0.4700036$ [11]
hivtransmission.param.e2	0.4700036	risk ratio = 1.6; $\ln(1.6)=0.4700036$ [11]
person.hsv2.a.dist.type*	fixed	person dependent baseline value for the STI transmission hazard is a fixed value

person.hsv2.a.dist.fixed.value*	-2.25	transmission rate (cumulative incidence) = 10% [3]; risk ratio = $-\log(1 - \text{cumulative incidence}) = -\log(0.9) = 0.1053605$ ; $\ln(0.1053605) = -2.25$
mortality.aids.survtime.C	65	parameter C in the formula for survival time [1] $t_{\text{survival}} = (C/V_{sp}^k) \times 10^x$ where $V_{sp}$ is the set-point viral load and x is the parameter determined per person allowing some randomness in the formula; results in survival time of 10-11 years for AIDS [12]
mortality.aids.survtime.k	-0.2	parameter k in the formula for survival time [1] (see parameter C); results in survival time of 10-11 years for AIDS [12]
person.survtime.logoffset.dist.type	normal	the parameter x in the formula for survival time is drawn from a normal distribution
person.survtime.logoffset.dist.normal.mu	0	the normal distribution for parameter x in the formula for survival time has mean 0
person.survtime.logoffset.dist.normal.sigma	0.1	the normal distribution for parameter x in the formula for survival time has standard deviation 0.1; to obtain a survival distribution which is approximately Weibull distributed
person.vsp.model.logdist2d.dist2d.binormalsymm.mean	4.3	the distribution used to pick set-point viral load values on a base 10 logarithmic scale is a binormal distribution using the same mean and standard deviation for the x-direction as for the y-direction (default); the parameters are fitted to the histogram for MSM in [5]; the mean is 4.3

person.vsp.model.logdist2d.dist2d.binormalsymm.rho	0.31	parameter rho for the correlation between x and y in the distribution of set-point viral load; this parameter represents set-point viral load heritability and is taken from [2]
person.vsp.model.logdist2d.dist2d.binormalsymm.sigma	1.3	standard deviation for the distribution of set-point viral load; the parameters are fitted to the histogram for MSM in [5]
person.vsp.model.logdist2d.usealternativeseeddist	yes	to use another distribution than the default to initialize set-point viral load values when HIV seeding is triggered
person.vsp.model.logdist2d.alternativeseed.dist.type	fixed	person dependent initial set-point viral load value is a fixed value
person.vsp.model.logdist2d.alternativeseed.dist.fixed.value	4	value is a bit lower than the value for 1984 in [6]
formationmsm.hazard.type	simple	amount of data available is limited; we take the most simple form of the formation hazard to limit the amount of parameters to fit
person.art.accept.threshold.dist.fixed.value	1	ART acceptance threshold is 1 (the maximum value for this parameter) for each person; willingness to accept treatment when offered
diagnosis.baseline	-1000000	no ART before 1994 [9]; we set this parameter to a very small number so that nobody will be treated
person.cd4.start.dist.type	lognormal	lognormal distribution for the CD4 value a person has at the time of infection
person.cd4.start.dist.lognormal.zeta	$\ln \left( \frac{\mu_{u.cd4}}{\sqrt{\frac{1+var.cd4}{\mu_{u.cd4}^2}}} \right)$	value for location parameter zeta of the distribution for the CD4 value a person has at the time of infection; $\mu_{u.cd4}=800$ ; $var.cd4=40000$

person.cd4.start.dist.lognormal.sigma	$\sqrt{\ln\left(\frac{1+var.cd4}{mu.cd4^2}\right)}$	value for scale parameter sigma of the distribution for the CD4 value a person has at the time of infection; mu.cd4=800; var.cd4=40000
person.cd4.end.dist.type	lognormal	lognormal distribution for the CD4 value a person will have when he dies from AIDS related causes
person.cd4.end.dist.lognormal.zeta	$\log\left(\frac{mu.cd4.end}{\sqrt{\frac{1+var.cd4.end}{mu.cd4.end^2}}}\right)$	value for location parameter zeta of the distribution for the CD4 value a person will have when he dies from AIDS related causes; mu.cd4.end=20; var.cd4.end=5
person.cd4.end.dist.lognormal.sigma	$\sqrt{\log\left(\frac{1+var.cd4.end}{mu.cd4.end^2}\right)}$	value for scale parameter sigma of the distribution for the CD4 value a person will have when he dies from AIDS related causes; mu.cd4.end=20; var.cd4.end=5

## Intervention events

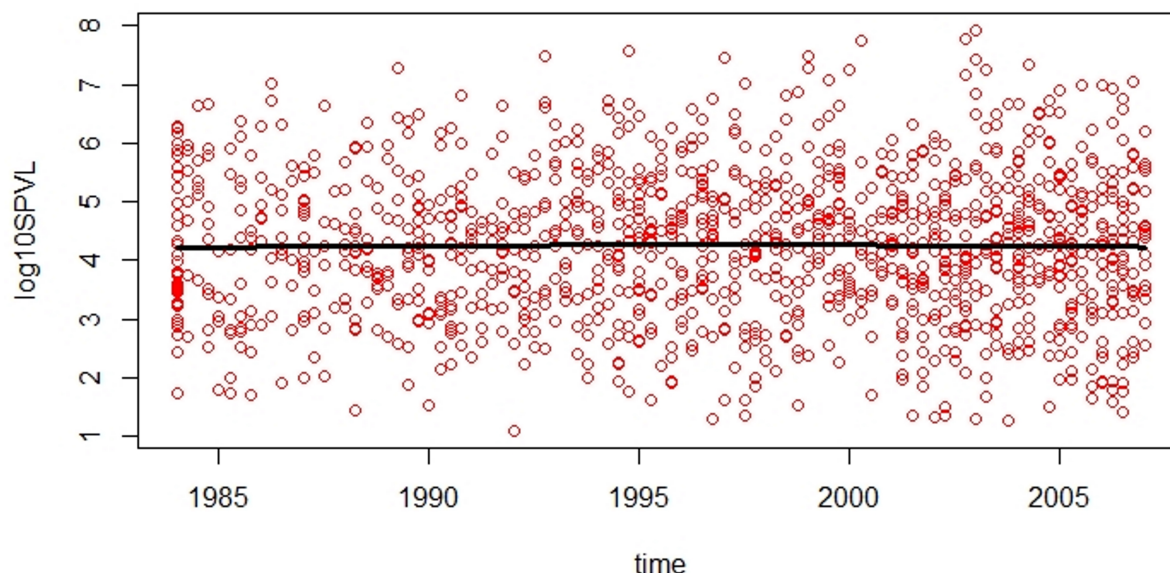
Table S2 summarizes the intervention events for simulating the increased ART coverage since 1994, and the increase in sexual risk behaviour with ART coverage.

**Table S2.** Intervention events for simulating the increased ART coverage since 1994, and the increase in sexual risk behaviour with ART coverage. CD4 threshold: the parameter monitoring.cd4.threshold, if a person's CD4 count is below this threshold, he will be offered ART; diagnosis.baseline: baseline value in the hazard for a diagnosis event; formation.alpha\_12: the parameter formationmsm.hazard.simple.alpha\_12 in the hazard for a relationship formation event, corresponding to a weight for the number of relationships the men in the relationship have. This parameter only changes for the scenarios with increased risk behaviour.

year	time	CD4 threshold	diagnosis.baseline	formation.alpha_12
1994	24	200	-1.5	initial value + 0.05
1996	26	230	-1.25	initial value + 0.1
1998	28	260	-1	initial value + 0.15
2000	30	290	-0.75	initial value + 0.2
2002	32	320	-0.5	initial value + 0.25
2004	34	350	-0.25	initial value + 0.3
2006	36	380	0	initial value + 0.35
2008	38	410	0.25	initial value + 0.4
2010	40	440	0.5	initial value + 0.45
2012	42	470	0.75	initial value + 0.5
2014	44	500	1	initial value + 0.55

## Generation of Figure 4

For each of the three scenarios (STI-nBC, nSTI-BC, STI-BC) 30 simulations with the fitted parameters were run. For each simulation, and for each person with date of seroconversion between 1984-2007, we determined the first HIV RNA at 9-27 months after seroconversion (red dots in Figure S3, each dot represents a person). A curve of the mean log<sub>10</sub> SPVL (black line in Figure S3 over time was generated by fitting a cubic spline through the red dots, in analogy to Figure 1A in Gras et al [6]. This was repeated for all 30 simulations. Figure 4 in the main text represents the median and 100% percentile of the 30 splines.



**Figure S3.** First HIV RNA at 9-27 months after seroconversion for each person with date of seroconversion between 1984 and 2007 (red dots) for a single simulation. Black line: cubic spline fitted through the red dots, representing the mean log<sub>10</sub> SPVL over time.

## References

1. R. A. Arnaout, A. L. Lloyd, T. R. O'Brien, J. J. Goedert, J. M. Leonard, and M. A. Nowak. A simple relationship between viral load and survival time in HIV-1 infection. *Proceedings of the National Academy of Sciences*, 96(20):11549–11553, 1999.
2. F. Blanquart, C. Wymant, M. Cornelissen, A. Gall, M. Bakker, D. Bezemer, M. Hall, M. Hillebregt, S. H. Ong, J. Albert, et al. Viral genetic variation accounts for a third of variability in HIV-1 set-point viral load in europe. *PLoS biology*, 15(6):e2001855, 2017.
3. Y. Bryson, M. Dillon, D. I. Bernstein, J. Radolf, P. Zakowski, and E. Garratty. Risk of acquisition of genital herpes simplex virus type 2 in sex partners of persons with genital herpes: a prospective couple study. *Journal of Infectious Diseases*, 167(4):942–946, 1993.
4. D. T. Fleming, G. M. McQuillan, R. E. Johnson, A. J. Nahmias, S. O. Aral, F. K. Lee, and M. E. St. Louis. Herpes simplex virus type 2 in the United States, 1976 to 1994. *New England Journal of Medicine*, 337(16):1105–1111, 1997.

- 
5. C. Fraser, T. D. Hollingsworth, R. Chapman, F. de Wolf, and W. P. Hanage. Variation in HIV-1 set-point viral load: epidemiological analysis and an evolutionary hypothesis. *Proceedings of the National Academy of Sciences*, 104(44):17441–17446, 2007.
  6. L. Gras, S. Jurriaans, M. Bakker, A. van Sighem, D. Bezemer, C. Fraser, J. Lange, J. M. Prins, B. Berkhout, F. de Wolf, et al. Viral load levels measured at set-point have risen over the last decade of the HIV epidemic in the Netherlands. *PLoS One*, 4(10):e7365, 2009.
  7. C. Hill, E. McKinney, C. Lowndes, H. Munro, G. Murphy, J. Parry, O. Gill, et al. Epidemiology of herpes simplex virus types 2 and 1 amongst men who have sex with men attending sexual health clinics in England and Wales: implications for HIV prevention and management. *Eurosurveillance*, 14(47):19418, 2009.
  8. J. Liesenborgs, D. M. Hendrickx, E. Kuylen, D. Niyukuri, N. Hens, and W. Delva. SimpackCyan 1.0: An open-source simulator for individual-based models in HIV epidemiology with R and Python interfaces. *bioRxiv*, page 440834, 2018.
  9. F. J. Palella Jr, K. M. Delaney, A. C. Moorman, M. O. Loveless, J. Fuhrer, G. A. Satten, D. J. Aschman, S. D. Holmberg, and H. O. S. Investigators. Declining morbidity and mortality among patients with advanced human immunodeficiency virus infection. *New England Journal of Medicine*, 338(13):853–860, 1998.
  10. A. N. Phillips, V. Cambiano, F. Nakagawa, A. E. Brown, F. Lampe, A. Rodger, A. Miners, J. Elford, G. Hart, A. M. Johnson, et al. Increased HIV incidence in men who have sex with men despite high levels of ART-induced viral suppression: analysis of an extensively documented epidemic. *PLoS one*, 8(2):e55312, 2013.
  11. R. V Barnabas and C. Celum. Infectious co-factors in HIV-1 transmission herpes simplex virus type-2 and HIV-1: new insights and interventions. *Current HIV research*, 10(3):228–237, 2012.
  12. World Health Organization. *AIDS epidemic update: December 2007*. WHO Regional Office Europe, 2008.