

## SUPPLEMENTARY MATERIAL

	bvAD	tAD	bvFTD	CN <sub>2</sub>	p-value
n	19	18	18	31	
Age, y	66.1 (7.4)	64.7 (9.6)	63.7 (5.7)	65.5 (8.0)	0.80
Sex, no. male (%)	11 (58)	9 (50)	14 (78)	19 (61)	0.82
Education, y mean (SD)	15.8 (2.4)	16.2 (3.0)	15.5 (3.4)	-	0.76
MMSE †, mean (SD)	21.8 (5.7)	21.5 (5.7)	21.8 (7.1)	-	0.99
APOEε4 positivity <sup>a</sup> , no. of patients (%)	7/13 (54)	9/11 (82)	3/18 (17)	-	<0.01
Scanner type <sup>b</sup>					<0.001
ECAT	15 (79)	18 (100)	13 (72)	12 (39)	
BIO	4 (21)	0 (0)	5 (28)	19 (61)	
Memory domain z-score <sup>c °</sup> , mean (SD)	-3.2 (1.5)	-4.0 (1.3)	-2.2 (1.7)	-	<0.01
Executive domain z-score <sup>°</sup> , mean (SD)	-1.6 (1.0)	-1.8 (1.0)	-1.7 (1.0)	-	0.88
NPI score <sup>d ◊</sup> , mean (SD)	31.8 (23.2)	11.5 (13.5)	37.2 (19.7)	-	<0.01

**Table S1.** Demographic, neuropsychological and neuropsychiatric characteristics across groups based on the subset of individuals with FDG-PET data available.

Differences between groups were assessed using ANOVA tests, Chi-square tests and Kruskal-Wallis tests with post hoc Mann-Whitney U-tests, where appropriate.

All p-values were corrected for multiple comparisons using Bonferroni correction.

<sup>a</sup> MMSE data was available for n=13 for bvAD, n=13 for tAD, n=17 for bvFTD and n=0 for CN<sub>2</sub>

<sup>°</sup> Cognition data was available for n=15 for bvAD, n=18 for tAD, n=15 for bvFTD, n=0 for CN<sub>2</sub> and assessed using a MANOVA with Bonferroni correction.

<sup>◊</sup> NPI data was available for n=8 for bvAD, n=4 for tAD, n=10 for bvFTD and n=0 for CN<sub>2</sub>

<sup>a</sup> tAD & bvAD > bvFTD, p<0.05

<sup>b</sup> tAD < bvFTD, p<0.01

<sup>c</sup> Controls > patients, p<0.001

<sup>d</sup> bvFTD > tAD, p<0.01

	bvAD	tAD	bvFTD	CN <sub>1</sub>	p-value
n	15	14	18	19	
Age, y	66.2 (8.8)	61.6 (6.9)	64.2 (5.1)	67.2 (9.7)	0.22
Sex, no. male (%)	8 (53)	6 (43)	13 (72)	12 (63)	0.37
Education, y mean (SD)	15.5 (2.8)	16.8 (3.3)	15.6 (3.4)	17.2 (2.3)	0.26
MMSE <sup>a †</sup> , mean (SD)	21.9 (5.8)	20.4 (6.3)	21.4 (7.3)	29.3 (0.8)	<0.001
APOEε4 positivity <sup>b</sup> , no. of patients (%)	9/13 (69)	4/4 (100)	3/18 (17)	1/19 (5)	<0.001
Scanner type					0.33
1.5T	4 (27)	3 (21)	2 (11)	7 (37)	
3T	11 (73)	11 (79)	16 (89)	12 (63)	
Memory domain z-score <sup>c °</sup> , mean (SD)	-3.4 (1.6)	-4.1 (1.1)	-2.3 (1.8)	0.3 (0.8)	<0.001
Executive domain z-score <sup>d °</sup> , mean (SD)	-2.0 (1.1)	-1.7 (1.1)	-1.8 (1.0)	-0.1 (0.6)	<0.001
NPI score <sup>δ</sup> , mean (SD)	31.8 (23.2)	11.5 (13.5)	37.2 (19.7)	-	0.11

**Table S2.** Demographic, neuropsychological and neuropsychiatric characteristics across groups based on the subset of individuals with FLAIR data available.

Differences between groups were assessed using ANOVA tests, Chi-square tests and Kruskal-Wallis tests with post hoc Mann-Whitney U-tests, where appropriate.

All p-values were corrected for multiple comparisons using Bonferroni correction.

<sup>†</sup> MMSE data was available for n=12 for bvAD, n=10 for tAD, n=17 for bvFTD and n=19 for CN<sub>1</sub>.

<sup>°</sup> Cognition data was available for n=15 for bvAD, n=6 for tAD, n=16 for bvFTD, n=17 for CN<sub>1</sub> and assessed using a MANOVA with Bonferroni correction.

<sup>◇</sup> NPI data was available for n=8 for bvAD, n=4 for tAD, n=10 for bvFTD and n=0 for CN<sub>1</sub>.

<sup>a</sup> Controls > patients,  $p < 0.05$ .

<sup>b</sup> Controls < tAD & bvAD,  $p < 0.001$ , tAD & bvAD > bvFTD,  $p < 0.01$ .

<sup>c</sup> Controls > patients,  $p < 0.001$ .

<sup>d</sup> Controls > bvAD & bvFTD,  $p < 0.001$ , controls > tAD,  $p < 0.01$ .

	bvAD	tAD	bvFTD	CN <sub>2</sub>
pDMN	3.85	4.14	2.04	1.38
aDMN	4.13	2.92	4.13	2.60
SAL	1.05	0.62	2.90	0.76
ECN	2.20	3.11	2.78	1.92

**Table S3.** Goodness-of-fit (GOF) scores indicating the resemblance of the FDG interregional covariance maps with the functional network templates by Shirer et al. (2012).

GOF scores represent the subtraction of the mean  $T$ -score outside of the network template from the mean  $T$ -score within the network template, and GOF ratios represent the division of the mean  $T$ -score inside the network template by the mean  $T$ -score outside the network template. *pDMN* = posterior default mode network; *aDMN* = anterior default mode network; *SAL* = salience network; *ECN* = executive control network.

	bvAD	tAD	bvFTD	CN <sub>2</sub>
pDMN	1.49	1.27	0.77	0.88
aDMN	2.09	1.41	2.09	1.37
SAL	0.71	0.74	1.82	0.83
ECN	2.46	3.57	3.02	1.31

**Table S4.** Goodness-of-fit (GOF) scores and ratios indicating the resemblance of the FDG interregional covariance maps with the functional network templates by Neurosynth.org.

GOF scores represent the subtraction of the mean  $T$ -score outside of the network template from the mean  $T$ -score within the network template, and GOF ratios represent the division of the mean  $T$ -score inside the network template by the mean  $T$ -score outside the network template. *pDMN* = posterior default mode network; *aDMN* = anterior default mode network; *SAL* = salience network; *ECN* = executive control network.

	bvAD	tAD	bvFTD	CN <sub>1</sub>
n	29	28	28	34
Hippocampus <sup>a</sup>	5.85 (1.10)	5.45 (0.76)	5.49 (1.09)	6.55 (0.87)
Amygdala <sup>b</sup>	2.73 (0.39)	2.33 (0.46)	2.45 (0.66)	2.82 (0.40)
Nucleus Accumbens <sup>c</sup>	0.72 (0.22)	0.73 (0.21)	0.51 (0.18)	0.91 (0.21)
Caudate nucleus <sup>d</sup>	6.11 (0.86)	6.07 (0.59)	5.70 (0.92)	6.54 (0.70)
Pallidum <sup>e</sup>	3.48 (0.57)	3.48 (0.43)	3.12 (0.59)	3.63 (0.33)
Putamen <sup>f</sup>	8.82 (1.50)	8.89 (0.77)	8.22 (1.34)	9.70 (0.90)
Thalamus <sup>g</sup>	14.71 (1.82)	14.37 (1.29)	14.44 (1.74)	15.85 (1.16)

**Table S5.** Deep gray matter volumes of subcortical structures across groups, presented as mean volume in cm<sup>3</sup>.

<sup>a</sup> Controls > patients,  $p < 0.001$

<sup>b</sup> Controls > tAD,  $p = 0.001$ , controls > bvFTD,  $p < 0.05$ , bvAD > tAD,  $p < 0.05$

<sup>c</sup> Controls > tAD,  $p < 0.05$ , controls > bvFTD,  $p < 0.001$ , bvFTD < tAD,  $p < 0.05$

<sup>d</sup> Controls > bvAD,  $p < 0.05$ , controls > bvFTD,  $p < 0.001$

<sup>e</sup> Controls > bvFTD,  $p < 0.001$ , bvFTD < bvAD & tAD,  $p < 0.05$

<sup>f</sup> Controls > bvFTD,  $p < 0.001$ , controls > bvAD,  $p = 0.01$

<sup>g</sup> Controls > bvAD,  $p < 0.01$ , controls > tAD,  $p < 0.05$ , controls > bvFTD,  $p < 0.001$

	bvAD	tAD	bvFTD	CN <sub>1</sub>
n	15	14	18	19
Total lobe <sup>a</sup>	4.06 [0.99-7.12]	4.43 [1.90-6.97]	5.06 [1.93-8.19]	0.65 [0.38-0.93]
Frontal lobe <sup>a</sup>	1.62 [0.31-2.94]	1.87 [0.80-2.94]	2.73 [0.86-4.60]	0.32 [0.18-0.46]
Parietal lobe <sup>a</sup>	1.68 [-0.03-3.39]	1.81 [-0.11-3.73]	1.26 [0.12-2.41]	0.11 [0.05-0.17]
Occipital lobe <sup>b</sup>	0.60 [0.10-1.09]	0.77 [0.31-1.23]	0.45 [0.21-0.69]	0.13 [0.05-0.22]
Temporal lobe <sup>a</sup>	0.61 [0.05-1.18]	0.58 [0.15-1.01]	0.62 [0.22-1.03]	0.07 [0.03-0.11]
Basal Ganglia & Infratentorial region <sup>a</sup>	0.09 [-0.01-0.19]	0.16 [0.04-0.29]	0.07 [0.03-0.10]	0.01 [0.01-0.02]

**Table S6.** Total and regional white matter hyperintensity volumes, presented as mean volume in cm<sup>3</sup> [95%CI].

<sup>a</sup> Controls < patients,  $p < 0.01$

<sup>b</sup> Controls < bvAD & tAD,  $p < 0.01$

		bvAD	tAD	bvFTD	CN1	CN2	
MRI <sup>o</sup>	n	29	28	28	34	-	
	Temporoparietal cortex <sup>a</sup>	0.37 (0.07)	0.37 (0.06)	0.41 (0.07)	0.49 (0.04)	-	
	Total parietal cortex <sup>b</sup>	0.26 (0.05)	0.26 (0.05)	0.30 (0.05)	0.34 (0.03)	-	
	Hippocampus <sup>c</sup>	0.33 (0.05)	0.31 (0.05)	0.32 (0.07)	0.40 (0.03)	-	
	FTD signature region <sup>d</sup>	0.31 (0.06)	0.33 (0.04)	0.27 (0.06)	0.38 (0.03)	-	
	Amygdala <sup>e</sup>	2.73 (0.39)	2.33 (0.46)	2.47 (0.65)	2.82 (0.39)		
FDG <sup>†</sup>	n	19	18	18	-	31	
	Temporoparietal cortex <sup>f</sup>	1.00 (0.13)	0.99 (0.11)	1.11 (0.14)	-	1.22 (0.09)	
	Total parietal cortex <sup>g</sup>	0.96 (0.13)	0.94 (0.16)	1.10 (0.11)	-	1.16 (0.10)	
	FTD signature region <sup>h</sup>	0.93 (0.11)	0.97 (0.10)	0.82 (0.21)	-	1.05 (0.08)	
	Posterior DMN <sup>i</sup>	1.00 (0.14)	0.99 (0.13)	1.18 (0.06)	-	1.17 (0.04)	
	Anterior DMN <sup>j</sup>	0.98 (0.10)	1.04 (0.10)	0.80 (0.16)	-	0.97 (0.04)	
	Salience Network <sup>k</sup>	1.05 (0.09)	1.09 (0.7)	0.90 (0.16)	-	1.07 (0.04)	
	Executive Control Network <sup>l</sup>	0.98 (0.09)	0.99 (0.08)	1.00 (0.11)	-	1.08 (0.03)	
	FLAIR <sup>□</sup>	n	15	14	18	19	-
		Total WMH volume <sup>m</sup>	2.84 (4.43)	2.65 (2.26)	3.84 (4.38)	1.19 (1.82)	

**Table S7.** Overview of results per modality included in the area-under-the-curve analysis per diagnostic group.

◇ MRI data presented were analyzed with a MANCOVA with Bonferroni correction, correcting for age, sex, scanner field strength and total intracranial volume.

† FDG data presented above were analyzed with MANCOVA with Bonferroni correction, correcting for age, sex and scanner type.

□ WMH data presented above are presented in  $\text{cm}^3$  and were tested with Kruskal-Wallis and post hoc Mann-Whitney U tests, with manual Bonferroni correction ( $p < 0.008$ ).

<sup>a</sup> Controls > patients,  $p < 0.001$ , bvAD < bvFTD,  $p = 0.01$

<sup>b</sup> Controls > patients,  $p < 0.001$ , bvAD < bvFTD,  $p < 0.01$

<sup>c</sup> Controls > patients,  $p < 0.001$

<sup>d</sup> Controls > bvAD & bvFTD,  $p < 0.001$ , Controls > tAD,  $p < 0.05$

<sup>e</sup> Controls > tAD,  $p = 0.001$ , controls > bvFTD,  $p < 0.05$ , bvAD > tAD,  $p < 0.05$

<sup>f</sup> Controls > tAD & bvAD,  $p < 0.001$ , controls > bvFTD,  $p < 0.05$ , tAD < bvFTD,  $p < 0.05$

<sup>g</sup> Controls > tAD & bvAD,  $p < 0.001$ , tAD < bvFTD,  $p < 0.05$

<sup>h</sup> Controls > tAD & bvAD,  $p < 0.05$ , controls > bvFTD,  $p < 0.001$

<sup>i</sup> Controls > bvAD & tAD,  $p < 0.001$ , bvAD & tAD < bvFTD,  $p < 0.001$

<sup>j</sup> Controls > bvFTD,  $p < 0.001$ , bvAD & tAD > bvFTD,  $p < 0.001$

<sup>k</sup> Controls > bvFTD,  $p < 0.001$ , bvAD & tAD > bvFTD,  $p < 0.001$

<sup>l</sup> Controls > tAD & bvFTD,  $p < 0.001$ , controls > bvAD,  $p < 0.01$

<sup>m</sup> Controls < bvFTD,  $p < 0.01$ , assessed with Kruskal-Wallis test ( $p = 0.008$ )



bvAD vs. bvFTD			bvAD vs. tAD			tAD vs. bvFTD		
Measure	AUC (95% CI)	p-value	Measure	AUC (95% CI)	p-value	Measure	AUC (95% CI)	p-value
1 FDG pDMN	0.91 (0.80-1.00)	<0.001	MRI AMYG	0.75 (0.62-0.88)	<0.01	FDG pDMN	0.92 (0.82-1.00)	<0.001
2 FDG aDMN	0.83 (0.70-0.97)	<0.01	FDG aDMN	0.71 (0.54-0.89)	0.03	FDG aDMN	0.92 (0.82-1.00)	<0.001
3 FDG PAR	0.80 (0.65-0.94)	<0.01	FDG SAL	0.66 (0.49-0.84)	0.09	FDG SAL	0.88 (0.76-0.99)	<0.001
4 FDG SAL	0.76 (0.60-0.92)	<0.01	FDG FTD	0.65 (0.46-0.83)	0.13	FDG PAR	0.79 (0.65-0.94)	<0.01
5 FDG TPC	0.75 (0.58-0.91)	0.01	MRI FTD	0.61 (0.46-0.76)	0.17	FDG TPC	0.76 (0.60-0.92)	0.01
bvAD vs. CN			tAD vs. CN			bvFTD vs. CN		
Measure	AUC (95% CI)	p-value	Measure	AUC (95% CI)	p-value	Measure	AUC (95% CI)	p-value
1 FDG TPC	0.93 (0.86-1.00)	<0.001	FDG TPC	0.98 (0.94-1.00)	<0.001	MRI FTD	0.93 (0.86-0.99)	<0.001
2 FDG PAR	0.91 (0.83-1.00)	<0.001	MRI HIP	0.94 (0.89-0.99)	<0.001	FDG aDMN	0.87 (0.73-1.00)	<0.001
3 MRI TPC	0.91 (0.83-0.99)	<0.001	MRI TPC	0.94 (0.88-1.00)	<0.001	FDG FTD	0.85 (0.72-0.99)	<0.001
4 FDG pDMN	0.90 (0.79-1.00)	<0.001	MRI PAR	0.92 (0.85-0.99)	<0.001	MRI TPC	0.81 (0.69-0.92)	<0.001
5 MRI PAR	0.89 (0.79-0.98)	<0.001	FDG PAR	0.91 (0.81-1.00)	<0.001	MRI HIP	0.80 (0.68-0.92)	<0.001

**Table S8.** Top-5 discriminating measures per contrast, with corresponding area-under-the-curve, 95% confidence intervals and significance levels.

*MRI FTD* = FTD signature region gray matter volume on MRI, consisting of the anterior cingulate, frontoinsula, striatum and frontopolar regions<sup>39, 40</sup>; *MRI AMYG* = bilateral amygdala gray matter volume on MRI; *MRI HIP* = bilateral hippocampus gray matter volume; *MRI PAR* = parietal gray matter volume; *MRI TPC* = temporoparietal gray matter volume; *FDG TPC* = temporoparietal cortex metabolism on FDG-PET; *FDG PAR* = parietal cortex metabolism on FDG-PET; *FDG pDMN* = glucose metabolism within the posterior default mode network, divided by the glucose metabolism without the posterior default mode network on FDG-PET; *FDG aDMN* = glucose metabolism within

the anterior default mode network, divided by the glucose metabolism without the anterior default mode network on FDG-PET; *FDG SAL* = glucose metabolism within the salience network, divided by the glucose metabolism without the salience network on FDG-PET.

bvAD vs. bvFTD <sup>a</sup>			bvAD vs. tAD <sup>b</sup>			tAD vs. bvFTD <sup>c</sup>		
Measure	AUC (95% CI)	p-value	Measure	AUC (95% CI)	p-value	Measure	AUC (95% CI)	p-value
1 FDG pDMN	0.89 (0.76-1.00)	<0.001	MRI AMYG	0.84 (0.71-0.98)	0.001	FDG aDMN	0.94 (0.87-1.00)	<0.001
2 FDG aDMN	0.86 (0.73-0.99)	<0.001	FDG aDMN	0.70 (0.52-0.89)	<0.05	FDG pDMN	0.92 (0.82-1.00)	<0.001
3 FDG SAL	0.79 (0.63-0.94)	<0.01	FDG SAL	0.68 (0.50-0.87)	0.07	FDG SAL	0.91 (0.81-1.00)	<0.001
4 FDG PAR	0.77 (0.61-0.94)	<0.01	FDG FTD	0.62 (0.42-0.81)	0.24	FDG FTD	0.81 (0.65-0.96)	<0.01
5 FDG FTD	0.74 (0.57-0.91)	<0.05	MRI FTD	0.60 (0.40-0.80)	0.33	FDG PAR	0.78 (0.63-0.94)	<0.01

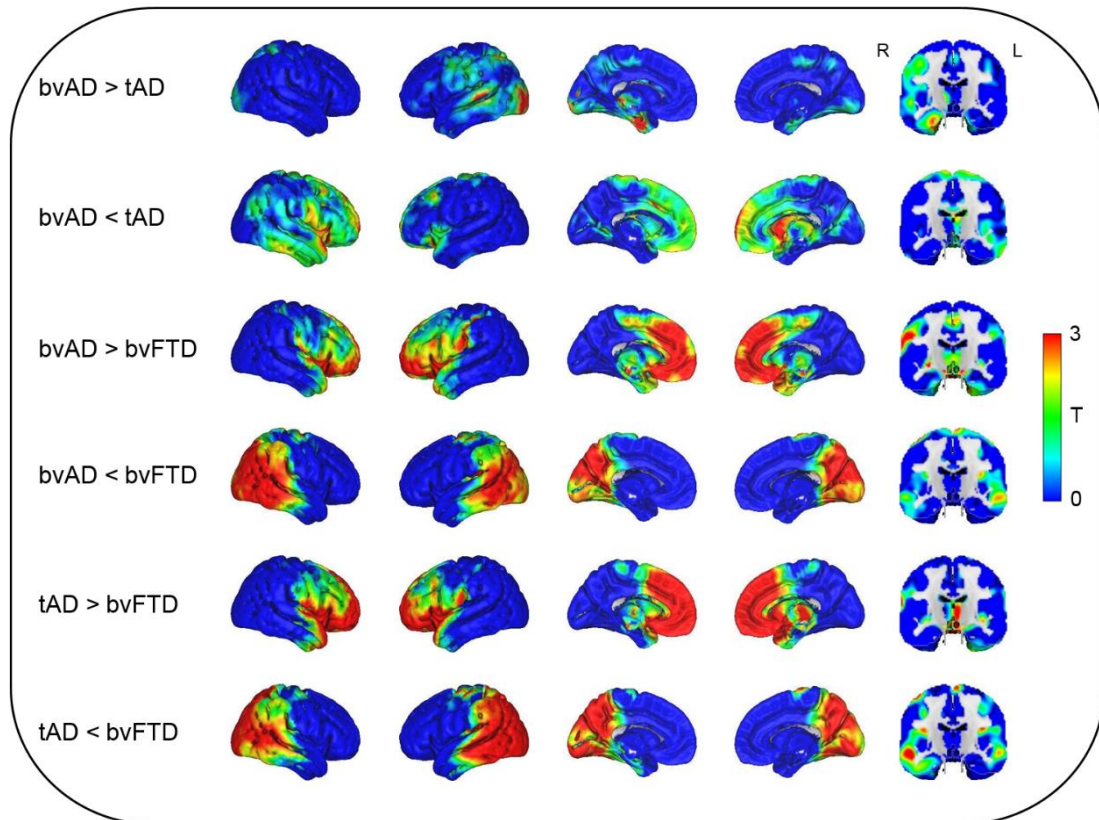
**Table S9.** Top-5 discriminating measures per contrast for individuals with both MRI and FDG-PET data available, with corresponding area-under-the-curve, 95% confidence intervals and significance levels.

*Note:* only contrasts between patients vs. patients are shown, as no cognitively normal participant had both MRI and PET data available.

<sup>a</sup> n=16 for bvAD and n=17 for bvFTD

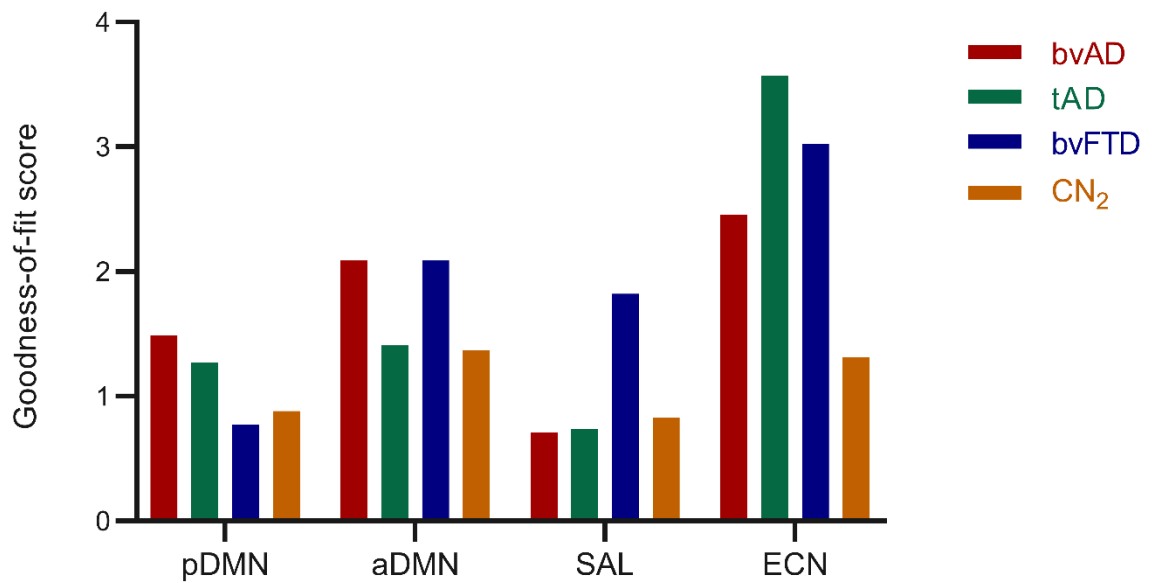
<sup>b</sup> n=16 for bvAD and n=18 for tAD

<sup>c</sup> n=18 for tAD and n=17 for bvFTD



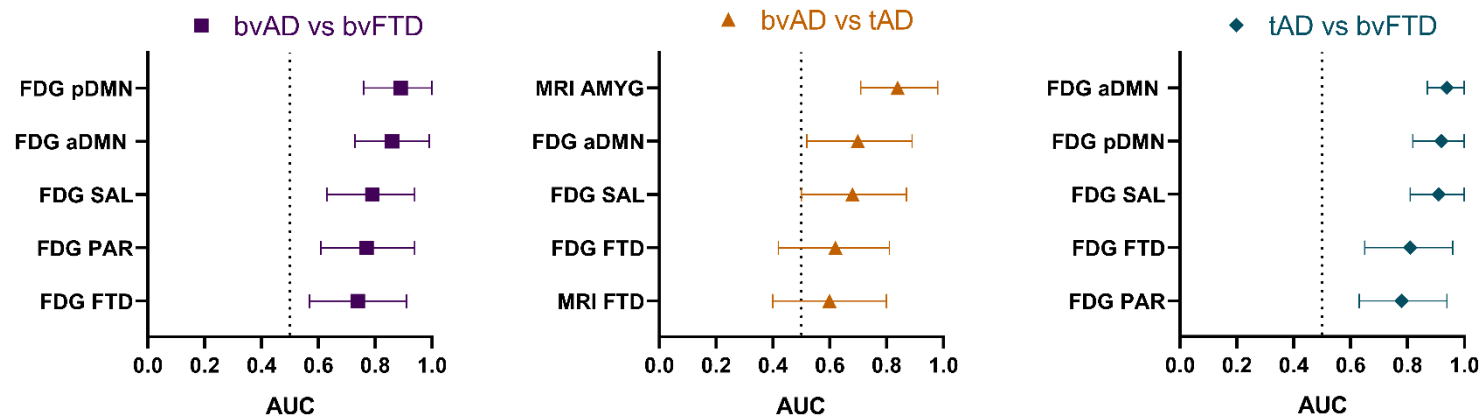
**Figure S1.** Patterns of hypometabolism resulting from contrasts between patient groups.

Surface rendering of *T*-maps resulting from showing hypometabolic regions in patients compared to other patient groups. Contrasts were adjusted for age and sex.



**Figure S2.** Goodness-of-fit (GOF) scores and ratios indicating the resemblance of the FDG interregional covariance maps with the functional network templates obtained from Neurosynth.org.

GOF scores represent the subtraction of the mean  $T$ -score outside of the network template from the mean  $T$ -score within the network template, and GOF ratios represent the division of the mean  $T$ -score inside the network template by the mean  $T$ -score outside the network template. *pDMN* = posterior default mode network, *aDMN* = anterior default mode network, *SAL* = salience network, *ECN* = executive control network.



**Figure S3.** Top-5 discriminating measures per contrast for individuals with both MRI and FDG-PET data available, with corresponding area-under-the-curve, 95% confidence intervals and significance levels.

*Note:* only contrasts between patients vs. patients are shown, as none of the cognitively normal subjects had both MRI and PET data available.