

## Supplementary Information

# Estimating the health impact of vaccination against 10 pathogens in 98 low and middle income countries from 2000 to 2030

### Authors

Xiang Li<sup>1</sup>, Christinah Mukandavire<sup>1</sup>, Zulma M Cucunubá, Kaja Abbas<sup>2</sup>, Hannah E Clapham<sup>2</sup>, Mark Jit<sup>2</sup>, Hope L Johnson<sup>2</sup>, Timos Papadopoulos<sup>2</sup>, Emilia Vynnycky<sup>2</sup>, Marc Brisson<sup>3</sup>, Emily D Carter<sup>3</sup>, Andrew Clark<sup>3</sup>, Margaret J de Villiers<sup>3</sup>, Kirsten Eilertson<sup>3</sup>, Matthew J Ferrari<sup>3</sup>, Ivane Gamkrelidze<sup>3</sup>, Katy Gaythorpe<sup>3</sup>, Nicholas C Grassly<sup>3</sup>, Timothy B Hallett<sup>3</sup>, Michael L Jackson<sup>3</sup>, Kévin Jean<sup>3</sup>, Andromachi Karachaliou<sup>3</sup>, Petra Klepac<sup>3</sup>, Justin Lessler<sup>3</sup>, Xi Li<sup>3</sup>, Sean M Moore<sup>3</sup>, Shevanthi Nayagam<sup>3</sup>, Duy Manh Nguyen<sup>3</sup>, Homie Razavi<sup>3</sup>, Devin Razavi-Shearer<sup>3</sup>, Stephen Resch<sup>3</sup>, Colin Sanderson<sup>3</sup>, Steven Sweet<sup>3</sup>, Stephen Sy<sup>3</sup>, Yvonne Tam<sup>3</sup>, Hira Tanvir<sup>3</sup>, Quan Minh Tran<sup>3</sup>, Caroline L Trotter<sup>3</sup>, Shaun Truelove<sup>3</sup>, Kevin van Zandvoort<sup>3</sup>, Stéphane Verguet<sup>3</sup>, Neff Walker<sup>3</sup>, Amy Winter<sup>3</sup>, Neil M Ferguson<sup>4</sup>, Tini Garske (Vaccine Impact Modelling Consortium)

MRC Centre for Global Infectious Disease Analysis, School of Public Health, (Xiang Li PhD, C Mukandavire PhD, Z M Cucunubá MD PhD, M J de Villiers PhD, K Gaythorpe PhD, N C Grassly, T B Hallett, K Jean PhD, S Nayagam PhD, N M Ferguson, T Garske PhD), *and Department of Surgery and Cancer (S Nayagam PhD)*, Imperial College London, London, UK; London School of Hygiene & Tropical Medicine (K Abbas, M Jit, A Clark, P Klepac, C Sanderson, H Tanvir, K van Zandvoort, E Vynnycky PhD); Oxford University Clinical Research Unit (H E Clapham PhD, D M Nguyen, Q M Tran PhD); Gavi, the Vaccine Alliance (H L Johnson PhD MPH); Public Health England (T Papadopoulos PhD, E Vynnycky PhD, M Jit); Laval University (M Brisson); Department of Epidemiology, Bloomberg School of Public Health (J Lessler PhD, S Truelove PhD, A Winter PhD), and Bloomberg School of Public Health, (E D Carter PhD, Y Tam MHS, N Walker PhD), Johns Hopkins University; The Pennsylvania State University (K Eilertson PhD, M J Ferrari PhD); Center for Disease Analysis Foundation, Lafayette, Colorado, USA (I Gamkrelidze, H Razavi PhD, D Razavi-Shearer); Kaiser Permanente Washington (M Jackson PhD); University of Cambridge (A Karachaliou Mmath, C L Trotter BA MSc PhD); Unaffiliated (Xi Li); Department of Biological Sciences, University of Notre Dame (S Moore PhD, Q M Tran PhD); Harvard T.H. Chan School of Public Health (S Resch PhD, S Sweet MSM, S Sy MS, S Verguet) *and Center for Health Decision Science, Harvard T.H. Chan School of Public Health, Harvard University (S Resch PhD, S Sweet MSM, S Sy MS)*; Laboratoire MESuRS, Conservatoire National des Arts et Métiers, Paris, France (K Jean); Unité PACRI, Institut Pasteur, Conservatoire National des Arts et Métiers, Paris, France (K Jean); University of Hong Kong (M Jit); Nuffield Department of Medicine (H E Clapham PhD)

---

<sup>1</sup> Contributed equally (current VIMC science team)

<sup>2</sup> Contributed equally (writing group)

<sup>3</sup> Contributed equally

<sup>4</sup> Corresponding author. Email: [neil.ferguson@imperial.ac.uk](mailto:neil.ferguson@imperial.ac.uk); MRC Centre for Global Infectious Disease Analysis, School of Public Health, Imperial College London, Norfolk Place, London, W2 1PG, UK

## Tables

**Table S1.** List of 98 low and middle income countries included in the analysis, including the 73 countries currently eligible for Gavi support. WHO region corresponds to the WHO Regional Offices in Africa (AFRO), Eastern Mediterranean (EMRO), Europe (EURO), South East Asia (SEARO) and Western Pacific (WPRO).

Country code	Country name	Gavi 73	WHO region
AFG	Afghanistan	TRUE	EMRO
AGO	Angola	TRUE	AFRO
ALB	Albania	FALSE	EURO
ARM	Armenia	TRUE	EURO
AZE	Azerbaijan	TRUE	EURO
BDI	Burundi	TRUE	AFRO
BEN	Benin	TRUE	AFRO
BFA	Burkina Faso	TRUE	AFRO
BGD	Bangladesh	TRUE	SEARO
BIH	Bosnia and Herzegovina	FALSE	EURO
BLZ	Belize	FALSE	PAHO
BOL	Bolivia	TRUE	PAHO
BTN	Bhutan	TRUE	SEARO
CAF	Central African Republic	TRUE	AFRO
CHN	China	FALSE	WPRO
CIV	Cote d'Ivoire	TRUE	AFRO
CMR	Cameroon	TRUE	AFRO
COD	Democratic Republic of the Congo	TRUE	AFRO
COG	Congo	TRUE	AFRO
COM	Comoros	TRUE	AFRO
CPV	Cabo Verde	FALSE	AFRO
CUB	Cuba	TRUE	PAHO
DJI	Djibouti	TRUE	EMRO
EGY	Egypt	FALSE	EMRO
ERI	Eritrea	TRUE	AFRO
ETH	Ethiopia	TRUE	AFRO
FJI	Fiji	FALSE	WPRO
FSM	Federated States of Micronesia	FALSE	WPRO
GEO	Georgia	TRUE	EURO
GHA	Ghana	TRUE	AFRO
GIN	Guinea	TRUE	AFRO
GMB	Gambia	TRUE	AFRO
GNB	Guinea-Bissau	TRUE	AFRO
GTM	Guatemala	FALSE	PAHO
GUY	Guyana	TRUE	PAHO
HND	Honduras	TRUE	PAHO
HTI	Haiti	TRUE	PAHO
IDN	Indonesia	TRUE	SEARO
IND	India	TRUE	SEARO

IRQ	Iraq	FALSE	EMRO
KEN	Kenya	TRUE	AFRO
KGZ	Kyrgyzstan	TRUE	EURO
KHM	Cambodia	TRUE	WPRO
KIR	Kiribati	TRUE	WPRO
LAO	Laos	TRUE	WPRO
LBR	Liberia	TRUE	AFRO
LKA	Sri Lanka	TRUE	SEARO
LSO	Lesotho	TRUE	AFRO
MAR	Morocco	FALSE	EMRO
MDA	Moldova	TRUE	EURO
MDG	Madagascar	TRUE	AFRO
MHL	Marshall Islands	FALSE	WPRO
MLI	Mali	TRUE	AFRO
MMR	Myanmar	TRUE	SEARO
MNG	Mongolia	TRUE	WPRO
MOZ	Mozambique	TRUE	AFRO
MRT	Mauritania	TRUE	AFRO
MWI	Malawi	TRUE	AFRO
NER	Niger	TRUE	AFRO
NGA	Nigeria	TRUE	AFRO
NIC	Nicaragua	TRUE	PAHO
NPL	Nepal	TRUE	SEARO
PAK	Pakistan	TRUE	EMRO
PHL	Philippines	FALSE	WPRO
PNG	Papua New Guinea	TRUE	WPRO
PRK	North Korea	TRUE	SEARO
PRY	Paraguay	FALSE	PAHO
PSE	Palestine	FALSE	PAHO
RWA	Rwanda	TRUE	AFRO
SDN	Sudan	TRUE	EMRO
SEN	Senegal	TRUE	AFRO
SLB	Solomon Islands	TRUE	WPRO
SLE	Sierra Leone	TRUE	AFRO
SLV	El Salvador	FALSE	PAHO
SOM	Somalia	TRUE	EMRO
SSD	South Sudan	TRUE	AFRO
STP	Sao Tome and Principe	TRUE	AFRO
SWZ	Swaziland	FALSE	AFRO
SYR	Syria	FALSE	EMRO
TCD	Chad	TRUE	AFRO
TGO	Togo	TRUE	AFRO
TJK	Tajikistan	TRUE	EURO
TKM	Turkmenistan	FALSE	EURO
TLS	Timor-Leste	TRUE	SEARO
TON	Tonga	FALSE	WPRO

TUN	Tunisia	FALSE	EMRO
TUV	Tuvalu	FALSE	WPRO
TZA	Tanzania	TRUE	AFRO
UGA	Uganda	TRUE	AFRO
UKR	Ukraine	TRUE	EURO
UZB	Uzbekistan	TRUE	EURO
VNM	Viet Nam	TRUE	WPRO
VUT	Vanuatu	FALSE	WPRO
WSM	Samoa	FALSE	WPRO
XK	Kosovo	FALSE	EURO
YEM	Yemen	TRUE	EMRO
ZMB	Zambia	TRUE	AFRO
ZWE	Zimbabwe	TRUE	AFRO

**Table S2.** Number of countries eligible for Gavi support for routine vaccinations for each pathogen and each year from 2000 to 2018. MCV2: measles-containing vaccine, second dose; PCV3: pneumococcal conjugate vaccine 3rd dose; RCV2: rubella-containing vaccine, second dose.

Year	HepB	Hib3	HPV	JE	MCV2	MenA	PCV3	RCV2	Rota	Rubella	YF
2000	8	0	0	0	0	0	0	0	0	0	0
2001	23	1	0	0	0	0	0	0	0	0	1
2002	41	6	0	0	0	0	0	0	0	0	6
2003	43	6	0	0	0	0	0	0	0	0	9
2004	45	6	0	0	0	0	0	0	0	0	14
2005	50	13	0	0	0	0	0	0	0	0	14
2006	54	14	0	0	0	0	0	0	0	0	14
2007	56	18	0	0	1	0	0	0	0	0	14
2008	58	28	0	0	2	0	0	0	1	0	16
2009	63	48	0	0	2	0	0	0	2	0	16
2010	64	56	0	0	2	0	2	0	4	0	16
2011	63	58	0	0	2	0	15	0	5	0	16
2012	66	61	0	0	6	0	19	0	10	0	16
2013	68	67	0	0	8	0	30	0	15	0	16
2014	68	67	2	0	13	0	42	0	32	1	16
2015	68	68	2	0	17	0	53	0	37	12	16
2016	68	68	3	1	19	1	55	0	40	13	18
2017	67	67	13	2	20	8	57	21	43	21	16
2018	67	67	17	4	22	11	59	22	48	24	17

**Table S3(a):** Estimated total DALYs averted (in millions) by vaccination and DALYs averted per thousand individuals vaccinated in different annual birth cohort ranges across the 98 countries considered, stratified by pathogen for all ages and under-5s. Estimates quoted to two significant figures.

Pathogen	Birth cohorts	DALYs averted (millions), lifetime	DALYs averted per 1000 vaccinated individuals, lifetime	DALYs averted (millions), <5	DALYs averted per 1000 vaccinated individuals, <5
HepB	2000-2018	810 (480-1300)	510 (300-800)	30 (4.9-100)	19 (3.1-63)
	2019-2030	760 (430-1200)	430 (240-630)	27 (4.7-88)	15 (2.7-50)
Hib	2000-2018	100 (43-160)	190 (78-280)	100 (43-160)	190 (78-280)
	2019-2030	150 (52-240)	160 (57-260)	150 (52-240)	160 (57-260)
HPV	2000-2018	57 (37-72)	340 (220-440)	0	0
	2019-2030	110 (100-130)	330 (290-370)	0	0
JE	2000-2018	17 (1.3-35)	41 (3.2-84)	6.7 (0.34-14)	16 (0.8-34)
	2019-2030	24 (2-50)	49 (4.2-100)	11 (0.83-23)	22 (1.7-46)
Measles	2000-2018	2100 (1400-2600)	460 (320-570)	2000 (1400-2500)	450 (320-560)
	2019-2030	1700 (690-2100)	610 (250-750)	1700 (750-2100)	590 (270-720)
MenA	2000-2018	12 (7.3-19)	49 (29-76)	1.5 (0.085-4.3)	6.2 (0.3-17)
	2019-2030	12 (5.7-20)	44 (21-75)	2.7 (0.14-7.2)	10 (0.5-27)
PCV	2000-2018	39 (18-67)	200 (96-340)	39 (18-67)	200 (96-340)
	2019-2030	120 (51-230)	160 (69-300)	120 (51-230)	160 (69-300)
Rota	2000-2018	8.8 (5.4-13)	66 (40-95)	8.8 (5.4-13)	66 (40-95)
	2019-2030	43 (26-61)	54 (33-78)	43 (26-61)	54 (33-78)
Rubella	2000-2018	56 (37-92)	45 (30-74)	0 (0-0)	0 (0-0)
	2019-2030	36 (24-61)	15 (10-25)	0 (0-0)	0 (0-0)
YF	2000-2018	240 (77-490)	670 (210-1400)	35 (10-74)	97 (30-210)
	2019-2030	240 (76-480)	840 (270-1800)	39 (12-83)	140 (43-300)
Total	2000-2018	3400 (2600-4200)	360 (270-440)	2300 (1600-2800)	240 (180-290)
	2019-2030	3200 (2100-3900)	300 (190-360)	2000 (1000-2500)	190 (98-230)
	2000-2030	6600 (4800-8000)	330 (230-400)	4300 (2900-5100)	210 (140-260)

**Table S3(b):** Estimated total deaths averted (in thousands) by vaccination and deaths averted per thousand individuals vaccinated in different time period ranges across the 98 countries considered, stratified by pathogen for all ages and under-5s. Estimates quoted to two significant figures.

Pathogen	Time period	Deaths averted (1000s), cross section	Deaths averted per 1000 vaccinated individuals, cross section	deaths averted (1000s), <5	DALYs averted per 1000 vaccinated individuals, <5
HepB	2000-2018	560 (170-1400)	0.3 (0.1-0.8)	250 (46-960)	0.2 (0-0.6)
	2019-2030	1700 (490-3100)	0.9 (0.3-1.7)	240 (63-880)	0.1 (0-0.5)
Hib	2000-2018	1400 (650-2100)	2.6 (1.1-3.7)	1400 (650-2100)	2.6 (1.1-3.7)
	2019-2030	2200 (810-3500)	2.4 (0.9-3.7)	2200 (810-3500)	2.4 (0.9-3.7)
HPV	2000-2018	0	0	0	0
	2019-2030	0	0	0	0
JE	2000-2018	64 (3-160)	0.2 (0-0.4)	45 (2-120)	0.1 (0-0.3)
	2019-2030	180 (17-440)	0.3 (0-0.7)	93 (9-240)	0.2 (0-0.4)
Measles	2000-2018	31000 (23000-41000)	6.5 (4.9-8.7)	30000 (23000-41000)	6.5 (4.9-8.5)
	2019-2030	25000 (11000-34000)	8.6 (3.7-12)	25000 (11000-33000)	8.4 (4-12)
MenA	2000-2018	63 (2-290)	0.2 (0-0.8)	16 (0-74)	0 (0-0.2)
	2019-2030	150 (3-740)	0.5 (0-2.6)	35 (1-170)	0.1 (0-0.6)
PCV	2000-2018	490 (260-820)	2.5 (1.3-4.1)	490 (260-820)	2.5 (1.3-4.1)
	2019-2030	1700 (780-3200)	2.3 (1.1-4.1)	1700 (780-3200)	2.3 (1.1-4.1)
Rota	2000-2018	110 (76-150)	0.8 (0.6-1.1)	110 (76-150)	0.8 (0.6-1.1)
	2019-2030	630 (390-870)	0.8 (0.5-1.1)	630 (390-870)	0.8 (0.5-1.1)
Rubella	2000-2018	80 (36-200)	0.1 (0-0.2)	0 (0-0)	0 (0-0)
	2019-2030	290 (140-660)	0.1 (0.1-0.3)	0 (0-0)	0 (0-0)
YF	2000-2018	1200 (400-2500)	4.1 (1.3-8.3)	460 (140-970)	1.6 (0.5-3.3)
	2019-2030	2400 (780-5100)	4.4 (1.3-9)	540 (160-1200)	1 (0.3-2.1)
Total	2000-2018	35000 (28000-45000)	3.7 (3.1-4.8)	33000 (27000-43000)	3.6 (2.8-4.6)
	2019-2030	35000 (18000-44000)	3 (1.7-3.8)	30000 (15000-39000)	2.7 (1.3-3.4)
	2000-2030	69000 (51000-88000)	3.3 (2.5-4.2)	63000 (48000-82000)	3.1 (2.2-3.9)

**Table S3(c):** Estimated total DALYs averted (in millions) by vaccination and DALYs averted per thousand individuals vaccinated in different time periods across the 98 countries considered, stratified by pathogen. Both all age and under-5 DALYs averted are shown. Estimates quoted to two significant figures.

Pathogen	Time period	DALYS averted (millions), cross section	DALYS averted per 1000 vaccinated individuals, cross section	DALYS averted (millions), <5	DALYS averted per 1000 vaccinated individuals, <5
HepB	2000-2018	54 (11-140)	34 (7.3-87)	27 (4-93)	17 (2.6-58)
	2019-2030	130 (31-240)	76 (17-140)	26 (4.6-87)	15 (2.6-49)
Hib	2000-2018	92 (40-140)	170 (74-250)	92 (40-140)	170 (74-250)
	2019-2030	150 (52-240)	160 (57-260)	150 (52-240)	160 (57-260)
HPV	2000-2018	0	0	0	0
	2019-2030	0	0	0	0
JE	2000-2018	7.3 (0.29-16)	21 (0.8-43)	5.3 (0.19-12)	15 (0.6-32)
	2019-2030	19 (1.5-40)	33 (2.6-67)	11 (0.8-23)	18 (1.3-38)
Measles	2000-2018	2000 (1400-2600)	420 (300-540)	2000 (1400-2500)	410 (300-530)
	2019-2030	1700 (650-2200)	560 (220-720)	1600 (700-2100)	550 (230-690)
MenA	2000-2018	3.9 (0.096-18)	11 (0.3-50)	1.1 (0.023-5.2)	3.2 (0.1-15)
	2019-2030	9.4 (0.19-46)	34 (0.7-170)	2.6 (0.056-12)	9.5 (0.2-43)
PCV	2000-2018	32 (16-54)	160 (84-280)	32 (16-54)	160 (84-280)
	2019-2030	120 (51-220)	160 (68-290)	120 (51-220)	160 (68-290)
Rota	2000-2018	7.4 (4.9-9.9)	55 (36-74)	7.4 (4.9-9.9)	55 (36-74)
	2019-2030	41 (25-59)	53 (33-75)	41 (25-59)	53 (33-75)
Rubella	2000-2018	8.7 (5.3-16)	7.7 (4.7-14)	0 (0-0)	0 (0-0)
	2019-2030	32 (21-54)	13 (8.5-22)	0 (0-0)	0 (0-0)
YF	2000-2018	69 (23-150)	240 (79-490)	29 (9.1-62)	100 (31-210)
	2019-2030	140 (44-290)	240 (79-510)	36 (11-78)	65 (20-140)
Total	2000-2018	2200 (1700-2800)	240 (180-300)	2100 (1600-2700)	230 (170-290)
	2019-2030	2300 (1200-2900)	200 (100-250)	2000 (990-2500)	180 (87-220)
	2000-2030	4600 (3100-5500)	220 (150-270)	4200 (2900-5000)	200 (140-250)

**Table S4(a):** Estimated total deaths averted (in thousands) by vaccination and deaths averted per thousand individuals vaccinated in different annual birth cohort ranges across the 73 Gavi countries, stratified by pathogen. Both lifetime and under-5 deaths averted are shown. Estimates quoted to two significant figures.

Pathogen	Birth cohorts	Deaths averted (1000), lifetime	Deaths averted per 1000 vaccinated individuals, lifetime	Deaths averted (1000s), <5	Deaths averted per 1000 vaccinated individuals, <5
HepB	2000-2018	12000 (3500-25000)	13 (3.7-28)	160 (17-600)	0.2 (0-0.7)
	2019-2030	13000 (3600-31000)	9.9 (2.7-24)	180 (20-640)	0.1 (0-0.5)
Hib	2000-2018	1500 (660-2300)	3.1 (1.3-4.5)	1500 (660-2300)	3.1 (1.3-4.5)
	2019-2030	2100 (770-3400)	2.5 (0.9-4)	2100 (770-3400)	2.5 (0.9-4)
HPV	2000-2018	2600 (1000-4200)	16 (6-25)	0	0
	2019-2030	4300 (2900-5800)	12 (8.3-17)	0	0
JE	2000-2018	81 (3-210)	0.3 (0-0.9)	12 (-4-40)	0 (0-0.2)
	2019-2030	130 (14-350)	0.4 (0-1.1)	39 (4-120)	0.1 (0-0.4)
Measles	2000-2018	31000 (18000-44000)	9.2 (5.7-13)	30000 (18000-43000)	9 (5.5-13)
	2019-2030	25000 (11000-35000)	11 (5-16)	24000 (11000-34000)	11 (5.2-16)
MenA	2000-2018	220 (92-390)	0.9 (0.4-1.6)	22 (0-69)	0.1 (0-0.3)
	2019-2030	200 (61-370)	0.8 (0.2-1.4)	36 (-1-110)	0.1 (0-0.4)
PCV	2000-2018	580 (270-1000)	3.1 (1.5-5.4)	580 (270-1000)	3.1 (1.5-5.4)
	2019-2030	1700 (760-3200)	2.4 (1.1-4.5)	1700 (760-3200)	2.4 (1.1-4.5)
Rota	2000-2018	130 (71-200)	1.1 (0.6-1.6)	130 (71-200)	1.1 (0.6-1.6)
	2019-2030	640 (360-970)	0.8 (0.5-1.3)	640 (360-970)	0.8 (0.5-1.3)
Rubella	2000-2018	430 (34-1400)	0.5 (0-1.6)	0	0
	2019-2030	290 (23-920)	0.1 (0-0.4)	0	0
YF	2000-2018	5600 (1800-12000)	16 (5.2-33)	550 (170-1300)	1.5 (0.5-3.3)
	2019-2030	5000 (1600-11000)	18 (5.9-39)	570 (170-1300)	2.1 (0.6-4.5)
Total	2000-2018	54000 (42000-66000)	7.7 (6.2-9.4)	33000 (26000-42000)	4.8 (3.7-6)
	2019-2030	52000 (37000-66000)	5.7 (4-7.2)	29000 (16000-38000)	3.2 (1.8-4.1)
	2000-2030	110000 (81000-140000)	6.6 (5-8.1)	63000 (46000-79000)	3.9 (2.8-4.9)



**Table S4(b):** Estimated total DALYs averted (in millions) by vaccination and DALYs averted per thousand individuals vaccinated in different annual birth cohort ranges across the 73 Gavi countries, stratified by pathogen. Both lifetime and under-5 DALYs averted estimates are shown. Estimates quoted to two significant figures.

Pathogen	Birth cohorts	DALYs averted (millions), lifetime	DALYs averted per 1000 vaccinated individuals, lifetime	DALYs averted (millions), <5	DALYs averted per 1000 vaccinated individuals, <5
HepB	2000-2018	470 (120-990)	510 (130-1100)	17 (1.3-58)	19 (1.5-64)
	2019-2030	550 (140-1300)	420 (110-980)	19 (1.6-64)	14 (1.3-49)
Hib	2000-2018	98 (41-150)	200 (84-300)	98 (41-150)	200 (84-300)
	2019-2030	140 (50-230)	170 (60-280)	140 (50-230)	170 (60-280)
HPV	2000-2018	58 (23-92)	350 (140-550)	0 (0-0)	0 (0-0)
	2019-2030	110 (79-160)	330 (220-440)	0 (0-0)	0 (0-0)
JE	2000-2018	7.5 (0.2-17)	31 (0.9-70)	1.4 (-0.39-3.9)	5.6 (-1.6-16)
	2019-2030	13 (1.1-30)	42 (3.7-97)	4.3 (0.38-12)	14 (1.3-38)
Measles	2000-2018	2000 (1100-2800)	590 (350-830)	1900 (1100-2800)	570 (340-820)
	2019-2030	1600 (680-2400)	730 (300-1100)	1600 (700-2300)	710 (310-1100)
MenA	2000-2018	12 (5.5-20)	49 (22-81)	1.5 (0.003-4.9)	6.2 (0-20)
	2019-2030	12 (3.9-21)	44 (14-78)	2.7 (-0.042-8.2)	10 (-0.2-31)
PCV	2000-2018	38 (17-66)	200 (95-360)	38 (17-66)	200 (95-360)
	2019-2030	120 (49-220)	170 (70-310)	120 (49-220)	170 (70-310)
Rota	2000-2018	8.4 (4.5-13)	70 (37-110)	8.4 (4.5-13)	70 (37-110)
	2019-2030	42 (23-65)	55 (31-85)	42 (23-65)	55 (31-85)
Rubella	2000-2018	47 (4.9-120)	54 (5.7-140)	0	0
	2019-2030	31 (3.2-79)	15 (1.5-37)	0	0
YF	2000-2018	240 (79-520)	670 (210-1500)	35 (10-77)	97 (30-220)
	2019-2030	240 (76-510)	840 (270-1900)	39 (11-86)	140 (42-310)
Total	2000-2018	2900 (2200-3500)	420 (310-500)	2100 (1500-2600)	300 (220-370)
	2019-2030	2900 (1800-3600)	310 (200-390)	1900 (1000-2400)	210 (110-260)
	2000-2030	5800 (4100-7000)	360 (250-440)	4100 (2800-4800)	250 (170-300)

**Table S4(c):** Estimated total deaths averted (in thousands) by vaccination and deaths averted per thousand individuals vaccinated in different time period ranges across the 73 Gavi countries, stratified by pathogen. Both all age and under-5 deaths averted are shown. Estimates quoted to two significant figures.

Pathogen	Time period	Deaths averted (1000), cross section	Deaths averted per 1000 vaccinated individuals, cross section	Deaths averted (1000), <5	Deaths averted per 1000 vaccinated individuals, <5
HepB	2000-2018	330 (50-860)	0.4 (0.1-0.9)	150 (14-560)	0.2 (0-0.6)
	2019-2030	1100 (220-2900)	0.8 (0.2-2.1)	180 (18-630)	0.1 (0-0.5)
Hib	2000-2018	1400 (630-2000)	2.8 (1.3-4)	1400 (630-2000)	2.8 (1.3-4)
	2019-2030	2100 (770-3300)	2.5 (0.9-4)	2100 (770-3300)	2.5 (0.9-4)
HPV	2000-2018	0	0	0	0
	2019-2030	0	0	0	0
JE	2000-2018	22 (-8-66)	0.1 (0-0.4)	9 (-5-32)	0 (0-0.2)
	2019-2030	78 (7-220)	0.2 (0-0.6)	36 (3-110)	0.1 (0-0.3)
Measles	2000-2018	29000 (13000-46000)	8.5 (3.7-14)	29000 (13000-45000)	8.4 (3.9-13)
	2019-2030	24000 (8600-38000)	10 (3.6-16)	24000 (8800-37000)	10 (3.7-16)
MenA	2000-2018	63 (0-390)	0.2 (0-1.1)	16 (0-110)	0 (0-0.3)
	2019-2030	150 (-24-900)	0.5 (-0.1-3.2)	35 (-1-220)	0.1 (0-0.8)
PCV	2000-2018	480 (240-810)	2.6 (1.3-4.4)	480 (240-810)	2.6 (1.3-4.4)
	2019-2030	1700 (750-3100)	2.4 (1.1-4.3)	1700 (750-3100)	2.4 (1.1-4.3)
Rota	2000-2018	110 (62-160)	0.9 (0.5-1.3)	110 (62-160)	0.9 (0.5-1.3)
	2019-2030	620 (350-950)	0.8 (0.5-1.2)	620 (350-950)	0.8 (0.5-1.2)
Rubella	2000-2018	48 (-6-170)	0.1 (0-0.2)	0	0
	2019-2030	240 (18-790)	0.1 (0-0.4)	0	0
YF	2000-2018	1200 (390-2600)	4.1 (1.3-8.7)	460 (140-1100)	1.6 (0.5-3.5)
	2019-2030	2400 (790-5400)	4.4 (1.3-9.5)	540 (160-1300)	1 (0.3-2.2)
Total	2000-2018	33000 (26000-42000)	4.9 (4-6.2)	32000 (25000-41000)	4.7 (3.7-6)
	2019-2030	33000 (17000-41000)	3.4 (1.8-4.2)	29000 (15000-37000)	3 (1.6-3.8)
	2000-2030	61000 (45000-77000)	3.7 (2.7-4.7)	29000 (15000-37000)	3 (1.6-3.8)

**Table S4(d):** Estimated total DALYs averted (in millions) by vaccination and DALYs averted per thousand individuals vaccinated in different time period ranges across the 73 Gavi countries, stratified by pathogen. Both all age and under-5 DALYs averted estimates are shown. Estimates quoted to two significant figures.

Pathogen	Time period	DALYs averted (millions), cross section	DALYs averted per 1000 vaccinated individuals, cross section	DALYs averted (millions), <5	DALYs averted per 1000 vaccinated individuals, <5
HepB	2000-2018	30 (3.4-81)	33 (3.7-88)	15 (1-53)	16 (1.1-58)
	2019-2030	86 (13-200)	66 (10-150)	18 (1.5-62)	14 (1.1-48)
Hib	2000-2018	88 (39-130)	180 (79-270)	88 (39-130)	180 (79-270)
	2019-2030	140 (50-230)	170 (61-280)	140 (50-230)	170 (61-280)
HPV	2000-2018	0	0	0	0
	2019-2030	0	0	0	0
JE	2000-2018	2.4 (-0.64-6.2)	13 (-3.5-34)	1 (-0.48-3.1)	5.6 (-2.6-17)
	2019-2030	8.2 (0.64-21)	21 (1.6-51)	4 (0.33-11)	10 (0.8-27)
Measles	2000-2018	1900 (830-3000)	540 (240-860)	1800 (850-2900)	530 (240-840)
	2019-2030	1600 (570-2600)	670 (240-1100)	1600 (580-2500)	650 (240-1100)
MenA	2000-2018	3.9 (0-24)	11 (0-68)	1.1 (0-7.3)	3.2 (0-21)
	2019-2030	9.4 (-1.6-58)	34 (-5.6-210)	2.6 (-0.11-17)	9.5 (-0.4-59)
PCV	2000-2018	31 (15-53)	170 (84-290)	31 (15-53)	170 (84-290)
	2019-2030	110 (49-210)	160 (69-300)	110 (49-210)	160 (69-300)
Rota	2000-2018	7 (3.9-11)	58 (33-86)	7 (3.9-11)	58 (33-86)
	2019-2030	41 (23-64)	54 (30-83)	41 (23-64)	54 (30-83)
Rubella	2000-2018	5.3 (-0.74-15)	7.3 (-1-21)	0	0
	2019-2030	26 (2.6-69)	12 (1.1-32)	0	0
YF	2000-2018	69 (22-150)	240 (77-510)	29 (9-65)	100 (31-220)
	2019-2030	140 (43-310)	240 (78-540)	36 (11-81)	65 (19-150)
Total	2000-2018	2100 (1600-2600)	310 (240-380)	2000 (1500-2500)	300 (230-370)
	2000-2018	2200 (1100-2700)	220 (110-280)	1900 (940-2400)	200 (98-250)
	2000-2030	4200 (2900-5100)	260 (180-310)	3900 (2700-4700)	240 (160-290)

## Legends for Excel files

The following table legends describe the data in the Excel files with the corresponding file name as Table S-.xlsx. The two files are Table S5.xlsx and Table S6.xlsx each with sheets (a-h) showing estimates for different combinations of view (calendar year, year of birth), age (all ages, under 5s), and time period (2000-2018, 2019-2030).

**Table S5(a).** Total deaths averted from all pathogens in each of the 98 countries among all age groups for 2000-2018 time periods, by calendar view (calendar year).

**Table S5(b).** Total deaths averted from all pathogens in each of the 98 countries among all age groups for 2019-2030 time periods, by calendar view (calendar year).

**Table S5(c).** Total deaths averted from all pathogens in each of the 98 countries among all age groups for 2000-2018 time periods, by cohort view (year of birth).

**Table S5(d).** Total deaths averted from all pathogens in each of the 98 countries among all age groups for 2019-2030 time periods, by cohort view (year of birth).

**Table S5(e).** Total deaths averted from all pathogens in each of the 98 countries among the under 5s age group for 2000-2018 time periods, by calendar view (calendar year).

**Table S5(f).** Total deaths averted from all pathogens in each of the 98 countries among the under 5s age group for 2019-2030 time periods, by calendar view (calendar year).

**Table S5(g).** Total deaths averted from all pathogens in each of the 98 countries among the under 5s age group for 2000-2018 time periods, by cohort view (year of birth).

**Table S5(h).** Total deaths averted from all pathogens in each of the 98 countries among under 5s age group for 2019-2030 time periods, by cohort view (year of birth).

**Table S6(a).** Deaths averted per 1000 vaccinated individuals by pathogen for each country among all age groups for 2000-2018 time periods, by calendar view (calendar year).

**Table S6(b).** Deaths averted per 1000 vaccinated individuals by pathogen for each country among all age groups for 2019-2030 time periods, by calendar view (calendar year).

**Table S6(c).** Deaths averted per 1000 vaccinated individuals by pathogen for each country among all age groups for 2000-2018 time periods, by cohort view (year of birth).

**Table S6(d).** Deaths averted per 1000 vaccinated individuals by pathogen for each country among all age groups for 2019-2030 time periods, by cohort view (year of birth).

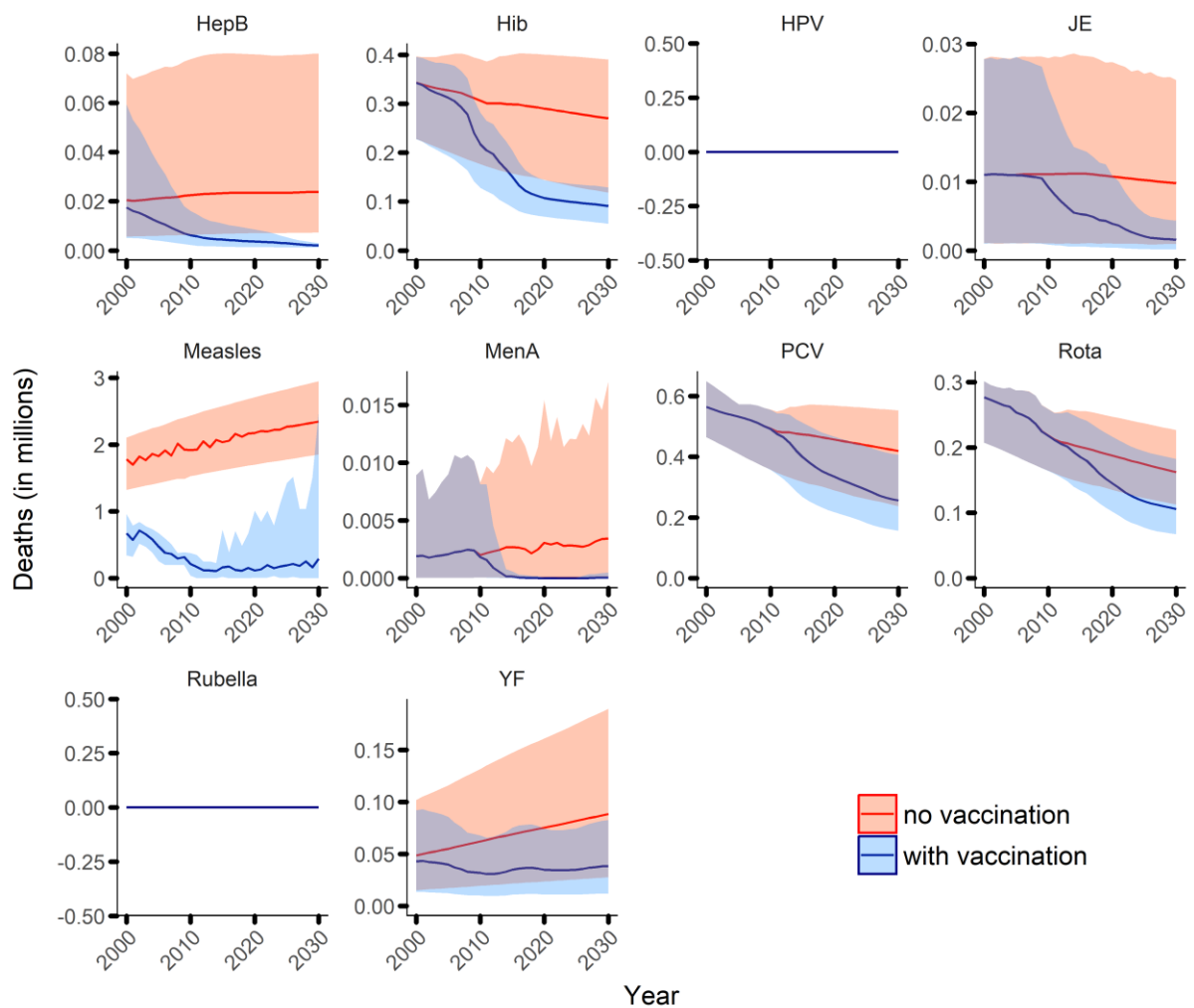
**Table S6(e).** Deaths averted per 1000 vaccinated individuals by pathogen for each country among the under 5s age group for 2000-2018 time periods, by calendar view (calendar year).

**Table S6(f).** Deaths averted per 1000 vaccinated individuals by pathogen for each country among the under 5s age group for 2019-2030 time periods, by calendar view (calendar year).

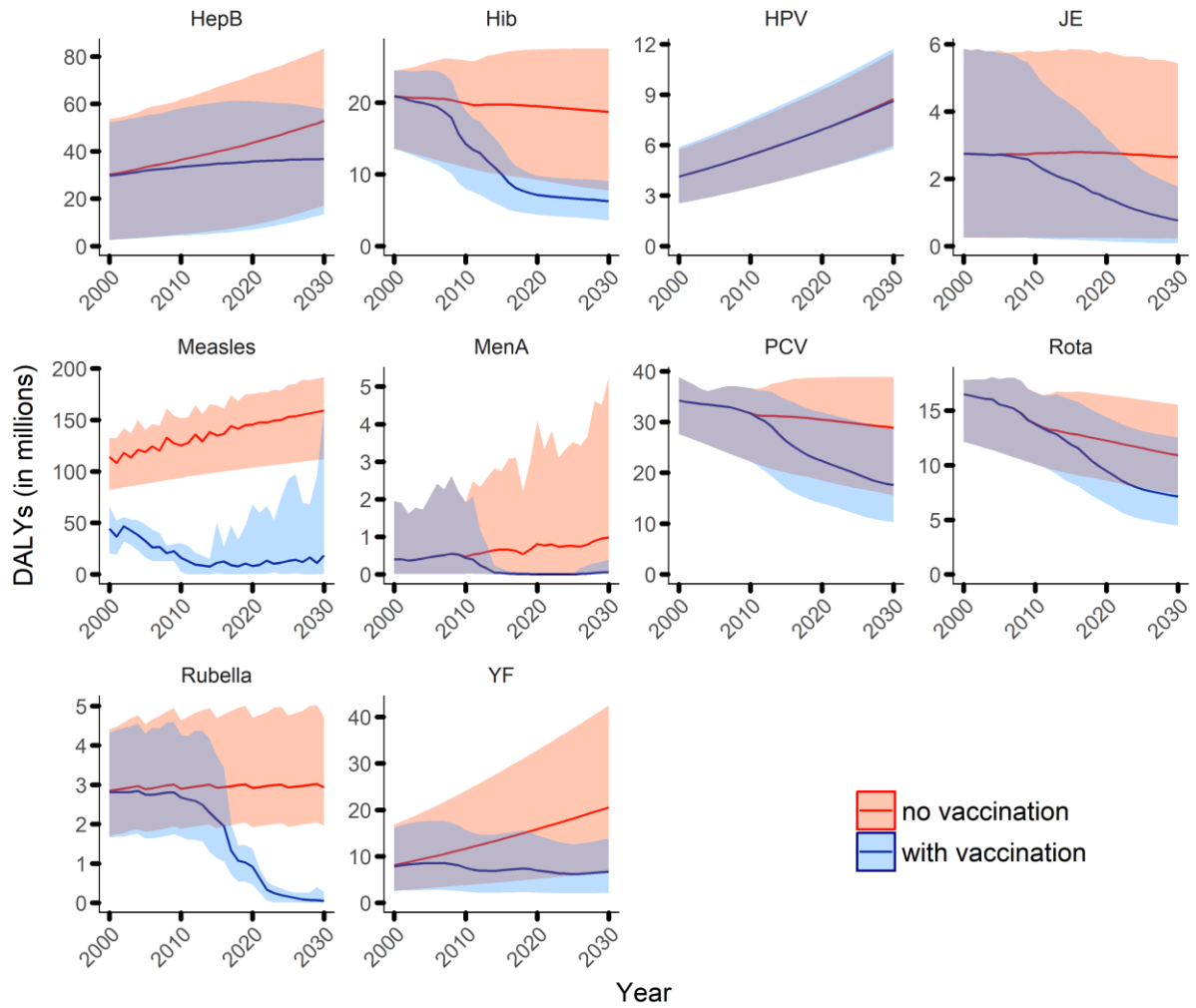
**Table S6(g).** Deaths averted per 1000 vaccinated individuals by pathogen for each country among the under 5s age group for 2000-2018 time periods, by cohort view (year of birth).

**Table S6(h).** Deaths averted per 1000 vaccinated individuals by pathogen for each country among the under 5s age group for 2019-2030 time periods, by cohort view (year of birth).

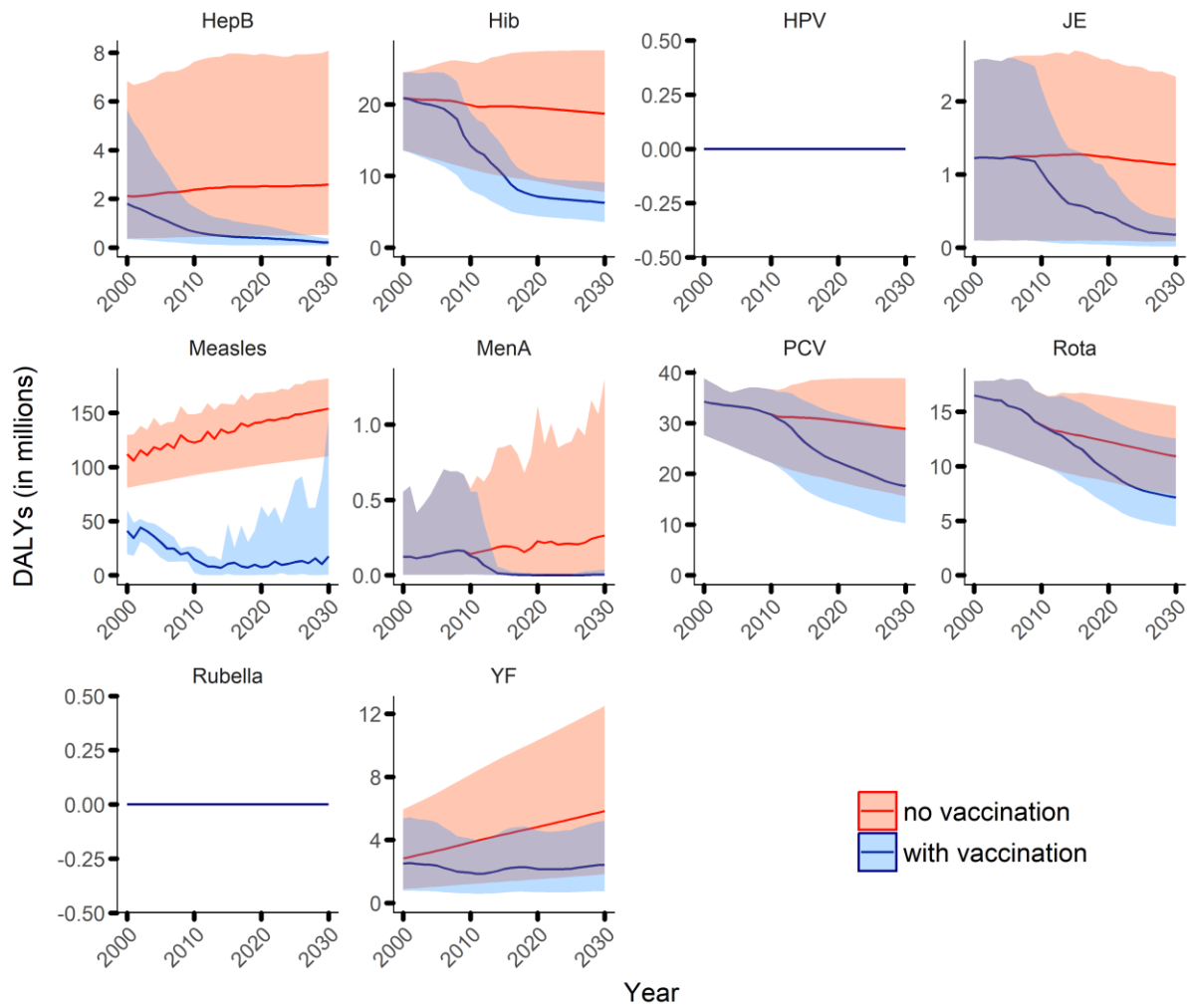
## Figures



**Figure S1 (a):** Disease burden estimates in deaths by calendar year from 2000 to 2030 across all 98 countries for under-5s. Continuous red and blue lines show no vaccination and default vaccination coverage scenarios, respectively for the under 5s.

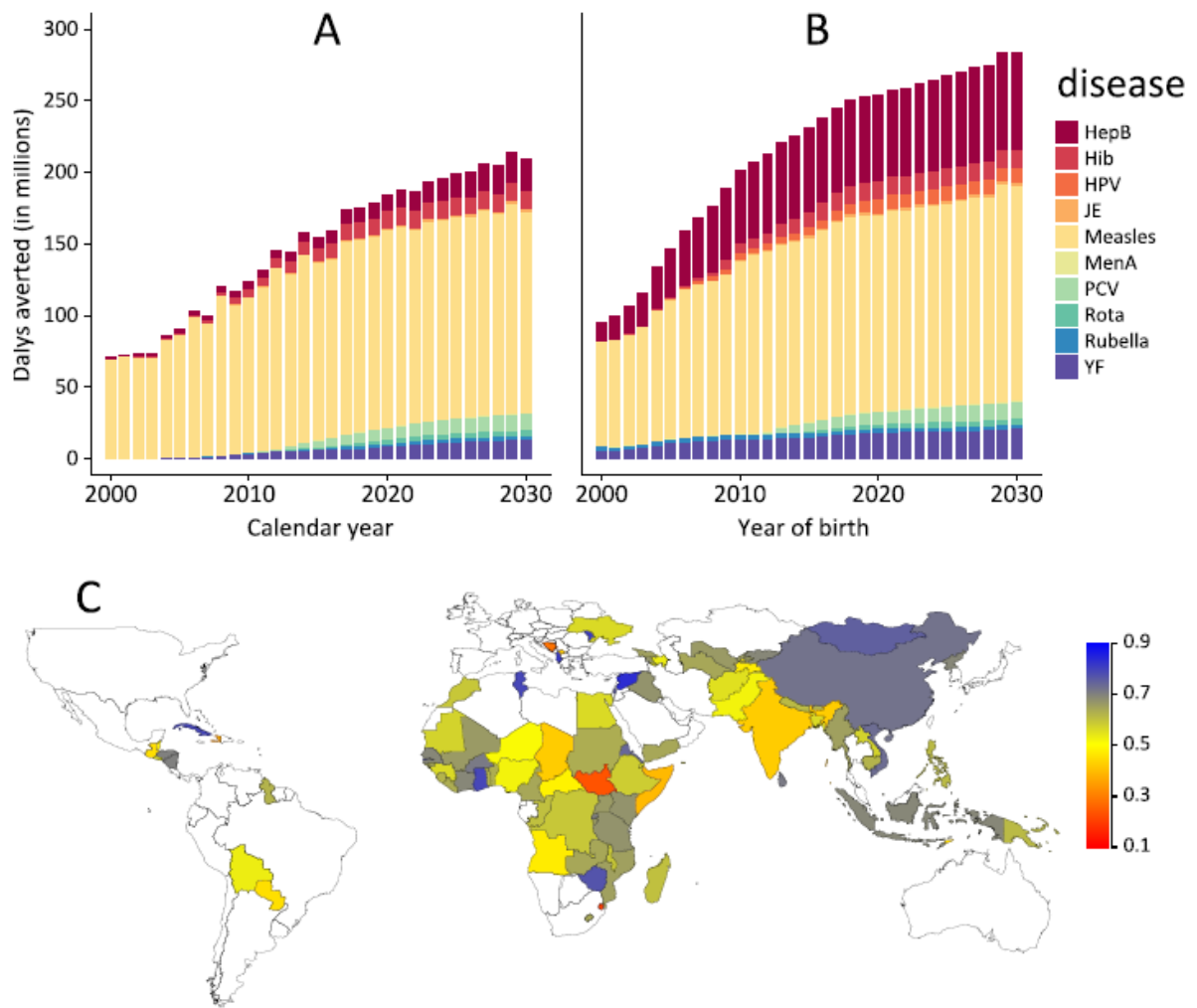


**Figure S1(b):** Disease burden estimates in DALYs by calendar year from 2000 to 2030 across all 98 countries for all ages. Continuous red and blue lines show no vaccination and default vaccination coverage scenarios, respectively, for all ages.

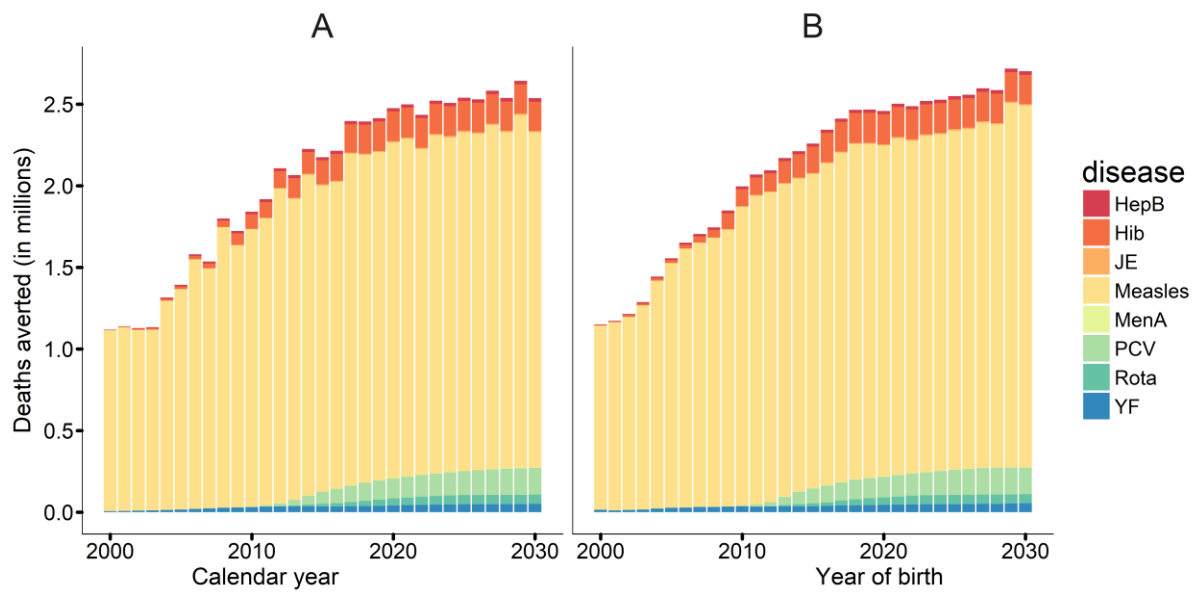


**Figure S1(c):** Disease burden estimates in DALYs by calendar year from 2000 to 2030 across all 98 countries for under-5s. Continuous red and blue lines show no vaccination and default vaccination coverage scenarios, respectively, for under 5s.

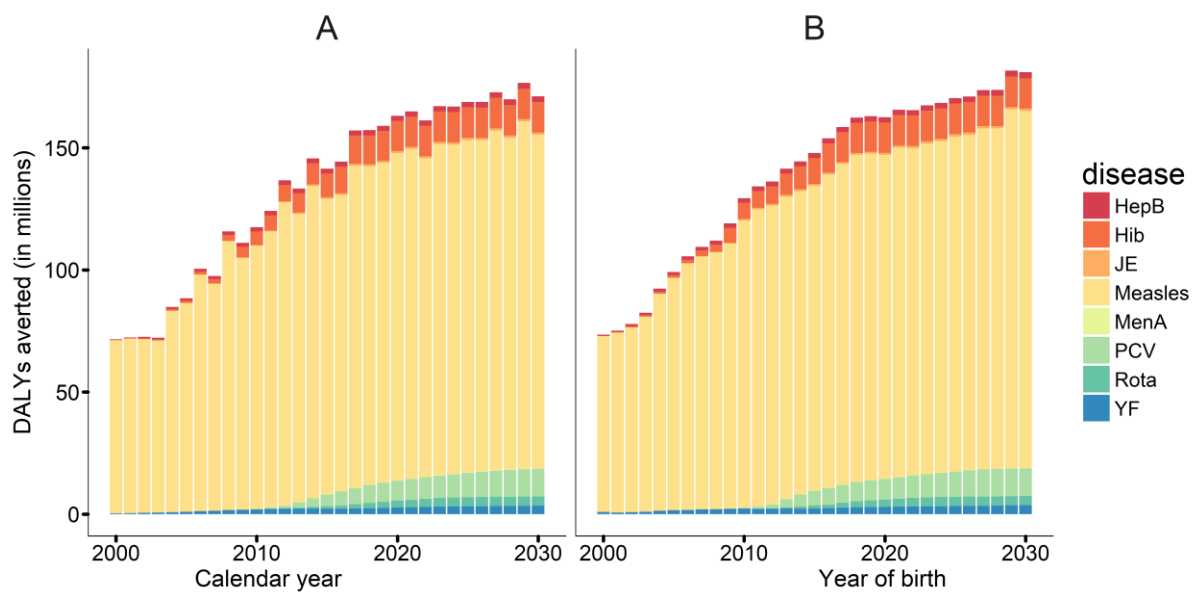




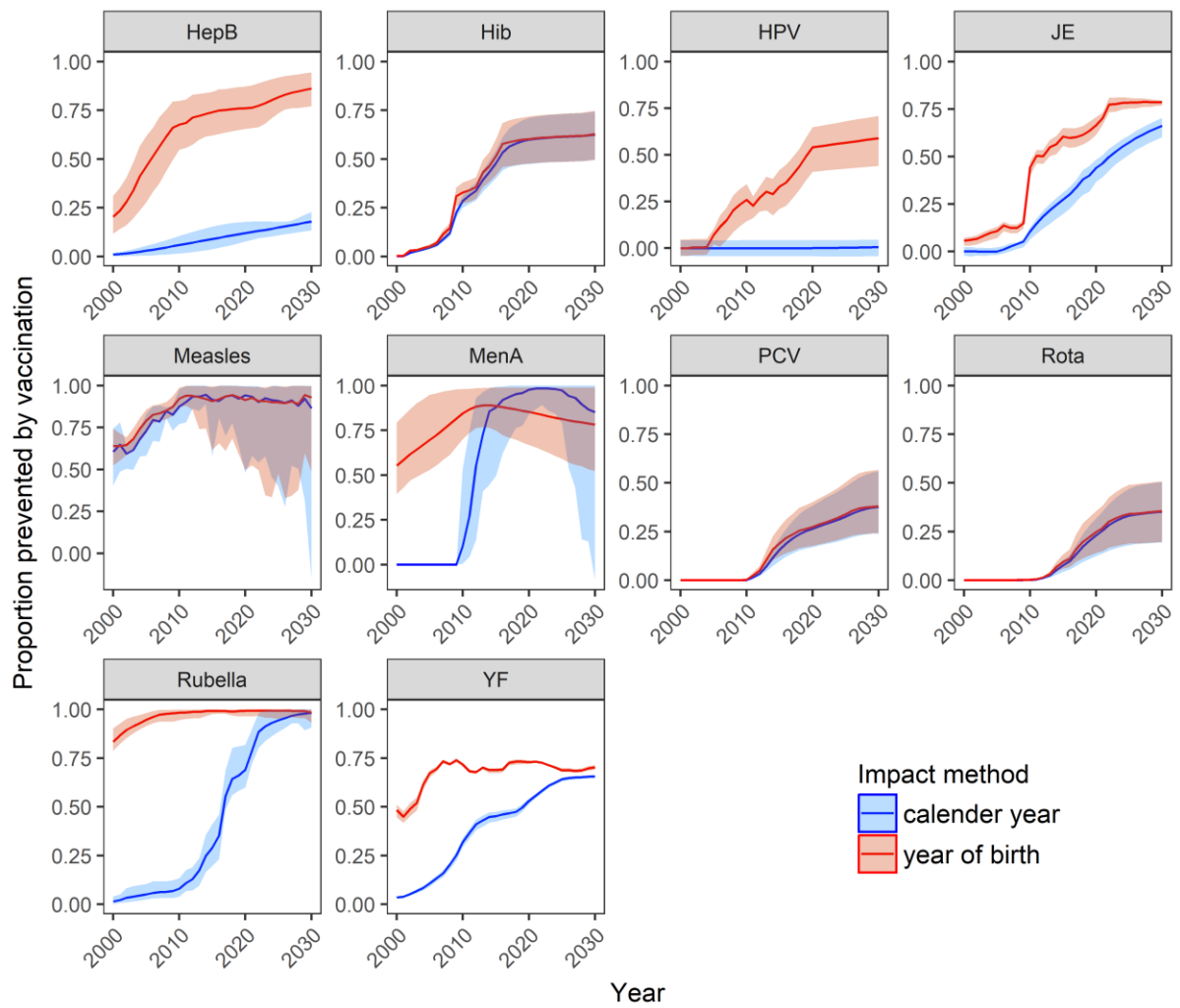
**Figure S2:** DALYs averted from 2000 to 2030 in the 98 countries: A) by calendar year (summing across all ages) and pathogen; B) by year of birth (summing across lifetime) and pathogen; C) proportion of lifetime DALYs due to the 10 pathogens in the no-vaccination counterfactual that are predicted to be averted by vaccination, by country across 2000-2018 birth cohorts.



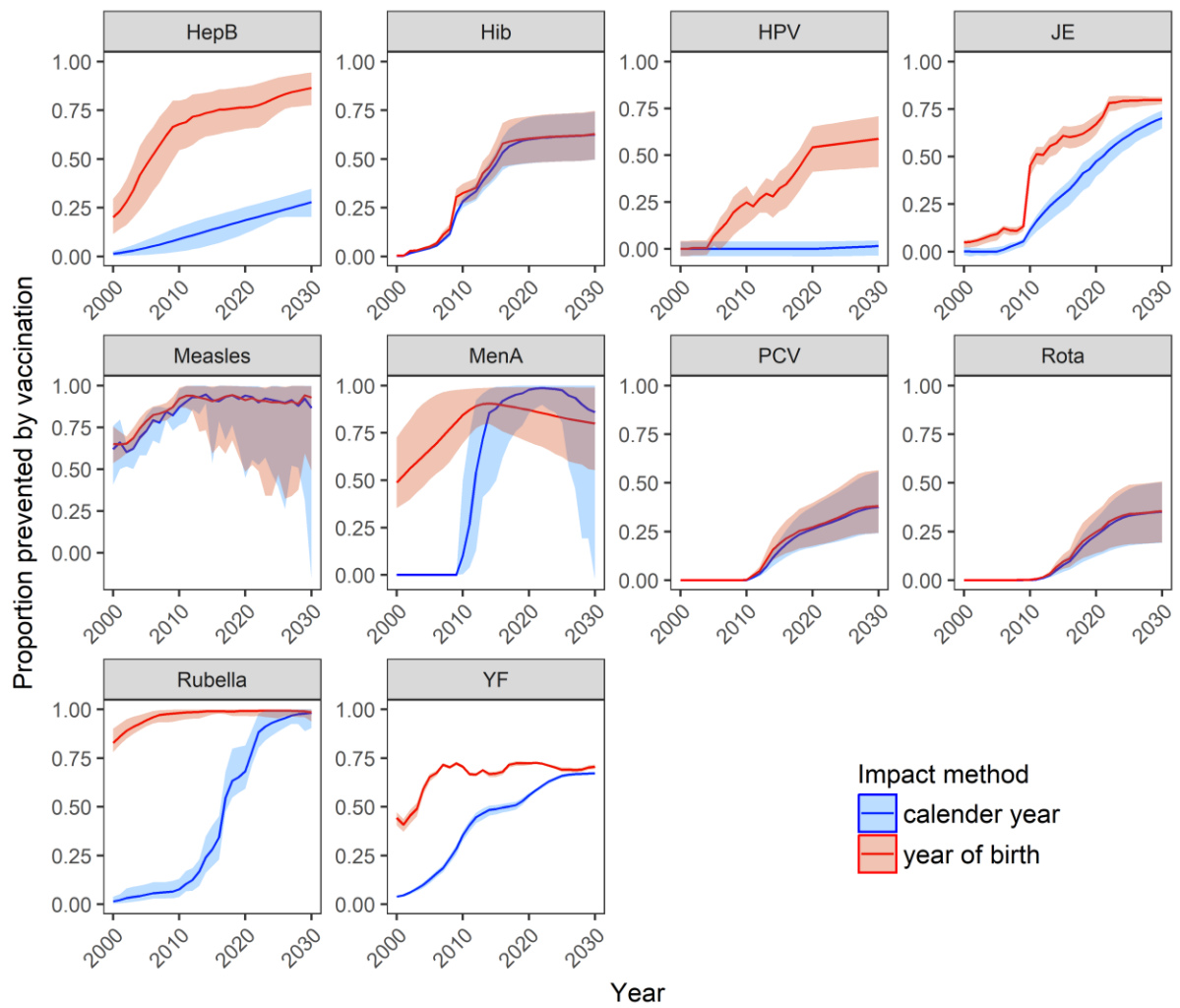
**Figure S3 (a):** Deaths averted from 2000 to 2030 in the 98 countries among the under 5s: A) by calendar year (summing across all ages) and pathogens; B) by year of birth (summing across lifetime) and pathogens.



**Figure S3 (b):** DALYs averted from 2000 to 2030 in the 98 countries among the under 5s: A) by calendar year (summing across all ages) and pathogens; B) by year of birth (summing across lifetime) and pathogens.



**Figure S4 (a).** Proportion of pathogen-specific deaths each year that would be prevented by vaccination by calendar year (blue) and year of birth (red). Solid lines show central estimates, shaded areas the 95% credible region



**Figure S4 (b).** Proportion of pathogen-specific DALYs each year that would be prevented by vaccination by calendar year (blue) and year of birth (red). Solid lines show central estimates, shaded areas the 95% credible region.