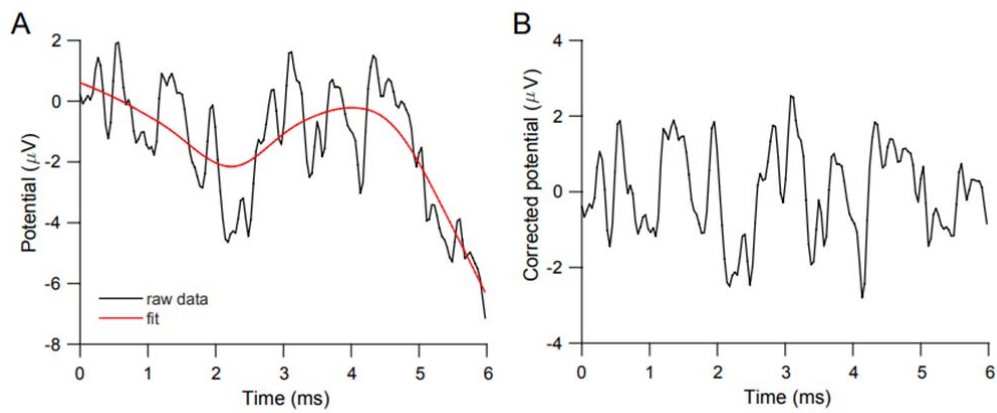


1



2

3

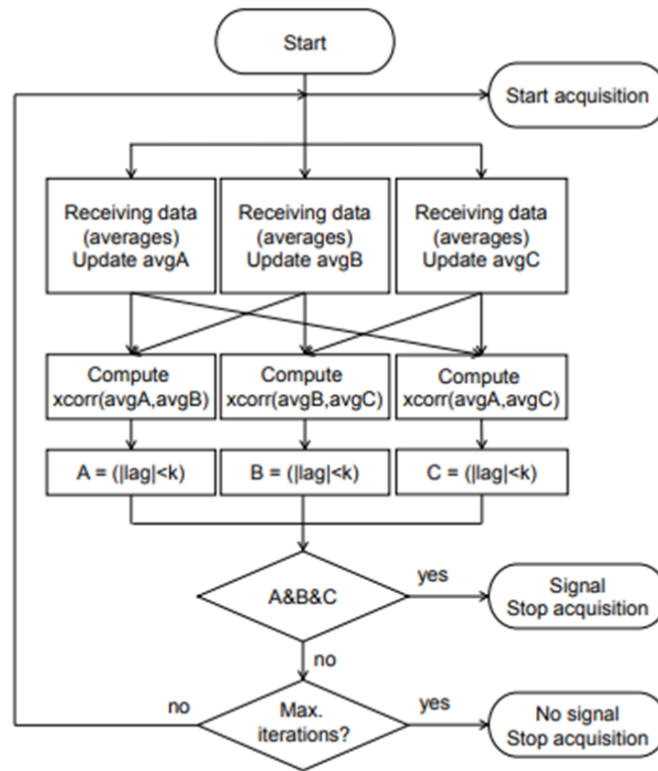
4

5

6

7

**Suppl. 1.** Baseline correction of single ABR sweep. (A) As an example, raw sweep was fit with a smoothing spline function with a smooth parameter of 0.5. (B) Corrected sweep was obtained by subtracting the fit function from the raw sweep.



**Suppl. 2.** Flowchart of the adaptive averaging method with averaged recordings as inputs. Since some commercial ABR device do not save intermediate single sweeps for averaging, we designed a variant flowchart to perform the adaptive averaging method. Averaged recordings over certain amount sweeps were acquired 3 times and the lag values were measured 3 times from a combination of 2 out of 3 recordings. Each iteration recruited new recordings to update current ones by weighted averaging (see Material and Methods).