

Online tables and figures

Table S1: Sociodemographic characteristics for cohort 2

	Comparison Group	Thiazide Diuretics	Beta Blockers	Angiotensin Antagonists	Calcium Channel Blockers	Polytherapy	Other Antihypertensives
Total n	502,937	8,477	90,919	48,408	24,634	65,584	34,256
Age							
Mean	52.8	62.2	44.7	54.4	61.2	57.1	62.5
SD	15.6	14.2	15.0	12.6	13.7	62.5	16.7
SIMD 2016							
Mean	4.78	5.17	4.59	4.87	4.93	4.92	4.72
SD	2.82	2.83	2.81	2.80	2.83	2.83	2.78
Sex							
Male	39.8	21.4	34.0	46.2	39.2	48.4	33.7
Female	60.2	78.6	66.1	53.8	60.8	51.6	66.3
Matched comparators							
N with One	na	2,392	6,329	6,818	3,468	16,387	6,225
% with One	na	28.2	7.0	14.1	14.1	25.0	18.2
N with Two	na	6,085	84,590	41,590	21,166	49,197	27,031
% with Two	na	71.8	93.0	85.9	85.9	75.0	81.8

Table S2: Medical Event and comorbidity variables, cohort 2

	Comparison Group		Thiazide diuretics		Beta Blockers		Angiotensin Antagonists		Calcium Channel Blockers		Polytherapy		Other Antihypertensives	
	n	%	n	%	n	%	n	%	n	%	n	%	n	%
Total	502,937	100	8,477	100	90,919	100	48,408	100	24,634	100	65,584	100	34,256	100
Survival events														
Treatment for	196,587	39.1	6,127	72.3	72,024	79.2	32,794	67.8	16,054	65.2	41,685	63.6	22,289	65.1
Treatment for Bipolar	39,998	8.0	900	10.6	10,543	11.6	4,018	8.3	2,445	9.9	4,817	7.3	5,321	15.5
Died	48,313	9.6	1,055	12.5	4,154	4.6	3,494	7.2	2,404	9.8	6,168	9.4	26,644	9.8
Changed Therapy			3,323	39.2	9,101	10.0	16,250	33.6	7,065	28.7				
History of hospital														
Cardiovascular disease	18,452	3.7	801	9.5	7,245	8.0	6,368	13.2	3,380	13.7	22,541	34.4	6,435	18.8
Substance Abuse	84,585	16.8	1,068	12.6	16,402	18.0	9,116	18.8	4,694	19.1	18,479	28.2	9,264	27.0
Head Injury	29,036	5.8	303	3.6	5,552	6.1	2,517	5.2	1,167	4.7	3,403	5.2	1,870	5.5
Self-harm	37,894	7.5	389	4.6	10,182	11.2	3,016	6.2	1,491	6.1	3,692	5.6	2,738	8.0
Schizophrenia	14,363	2.9	176	2.1	1,981	2.2	1,172	2.4	582	2.4	1,069	1.6	1,035	3.0
Major Depressive	34,607	6.9	594	7.0	8,542	9.4	3,760	7.8	2,039	8.3	4,686	7.2	3,762	11.0
Bipolar Disorder	6,708	1.3	95	1.1	1,042	1.2	626	1.3	358	1.5	566	0.9	652	1.9
Other mood disorder	4,868	1.0	112	1.3	880	1.0	457	0.9	321	1.3	509	0.8	516	1.5
Personality disorder	7,019	1.4	94	1.1	1,847	2.0	620	1.3	342	1.4	761	1.2	744	2.2
History of														
Other Cardiovascular	71,980	14.3	3,455	40.8	19,286	21.2	24,738	51.1	12,206	49.6	42,175	64.3	15,581	45.5
Diabetic drugs	10,920	2.2	387	4.6	2,366	2.6	8,608	17.8	1,217	4.9	6,405	9.8	2,588	7.6
Hypnotics and	220,526	43.9	3,805	44.9	50,315	55.3	20,721	42.8	11,641	47.3	26,868	41.0	18,279	53.4
Antidepressant Drugs	347,152	69.0	6,370	75.1	76,640	84.3	35,738	73.8	18,444	74.9	42,813	65.3	24,591	71.8
Psychoses and related	40,190	8.0	591	7.0	8,081	8.9	3,251	6.7	1,940	7.9	3,091	4.7	4,112	12.0

Table S3: Number at risk at start of year, and number of first new onset of Major depressive disorder and Bipolar disorder

	Year 1 N at Risk (N Failures)	Year 2 N at Risk (N Failures)	Year 3 N at Risk (N Failures)	Year 4 N at Risk (N Failures)	Year 5 N at Risk (N Failures)	Year 6 N at Risk (N Failures)	Year 7 N at Risk (N Failures)
Cohort 1							
Major Depressive Disorder							
Comparison	538730 (23057)	469614 (18799)	405964 (15074)	348452 (12655)	295710 (11032)	246646 (7756)	202096 (5667)
Thiazide Diuretics	25555 (1297)	19930 (957)	15961 (698)	12725 (524)	10143 (421)	7854 (285)	5797 (204)
Beta Blockers	73996 (6619)	55273 (3655)	42852 (2464)	33293 (1740)	25418 (1285)	18904 (755)	13763 (477)
Angiotensin Antagonists	130110 (5909)	98380 (4156)	77952 (2999)	61780 (2313)	48515 (1829)	37245 (1214)	27673 (802)
Calcium Channel Blockers	57986 (2496)	40413 (1716)	29628 (1129)	21775 (786)	15811 (618)	11172 (372)	7822 (230)
Poltherapy	211282 (10860)	188908 (8799)	168167 (7177)	149290 (6138)	131551 (5716)	114360 (4566)	98269 (3448)
Other Antihypertensives	39801 (2855)	31517 (2050)	25094 (1438)	19962 (1147)	15645 (876)	12004 (589)	8829 (356)
Bipolar Disorder							
Comparison	538730 (2251)	489992 (2159)	440705 (1949)	392433 (1685)	345094 (1554)	298844 (1224)	252665 (883)
Thiazide Diuretics	2555 (74)	21007 (84)	17658 (73)	14701 (76)	12162 (75)	9772 (44)	7462 (46)
Beta Blockers	73996 (213)	61040 (212)	50672 (157)	41528 (159)	33248 (131)	25791 (102)	19192 (59)
Angiotensin Antagonists	130110 (198)	103316 (248)	85318 (219)	70153 (180)	57039 (165)	45252 (149)	34695 (95)
Calcium Channel Blockers	57986 (166)	42408 (157)	32547 (158)	24803 (119)	18640 (94)	13684 (79)	9911 (55)
Poltherapy	211282 (456)	198948 (556)	185439 (600)	171613 (647)	157346 (728)	142594 (695)	127244 (630)
Other Antihypertensives	39801 (432)	33924 (375)	28839 (307)	24304 (217)	20179 (175)	16380 (142)	12710 (79)
Cohort 2							
Major Depressive Disorder							
Comparison	502937 (166159)	275860 (11728)	218451 (7164)	170967 (4726)	129132 (3440)	91605 (2078)	58853 (1169)
Thiazide Diuretics	8477 (4966)	2597 (296)	1805 (176)	1253 (110)	836 (75)	545 (33)	322 (18)
Beta Blockers	90919 (63722)	20930 (3537)	13601 (1739)	9026 (951)	5969 (585)	3719 (292)	2150 (123)
Angiotensin Antagonists	48408 (26766)	15301 (1802)	10270 (894)	6975 (548)	4628 (343)	2960 (167)	1693 (77)
Calcium Channel Blockers	24634 (13459)	7286 (806)	4621 (413)	2865 (223)	1668 (137)	935 (55)	498 (25)
Poltherapy	65584 (33393)	28086 (3198)	21291 (1967)	16279 (1358)	11977 (920)	8413 (521)	5561 (322)
Other Antihypertensives	34256 (19109)	11063 (1417)	7350 (789)	4912 (458)	3204 (276)	1966 (144)	1094 (68)
Bipolar Disorder							
Comparison	502937 (31457)	388591 (3252)	317545 (1934)	254160 (1365)	195952 (948)	142943 (563)	95775 (330)
Thiazide Diuretics	9477 (541)	6198 (76)	4905 (59)	3881 (47)	2952 (42)	2147 (25)	1393 (6)
Beta Blockers	90919 (7064)	68267 (1156)	53520 (796)	41064 (506)	30536 (374)	21133 (208)	13526 (128)
Angiotensin Antagonists	48408 (2794)	33754 (287)	25648 (207)	19083 (154)	13817 (91)	9561 (64)	6150 (27)
Calcium Channel Blockers	24634 (1686)	15998 (199)	11484 (135)	7937 (78)	5267 (51)	3372 (39)	2010 (20)
Poltherapy	65584 (2889)	55916 (539)	48307 (385)	41137 (333)	34066 (288)	27117 (228)	20662 (145)
Other Antihypertensives	34256 (3822)	24054 (557)	18742 (360)	14474 (239)	10787 (176)	7660 (91)	4904 (41)

Figure S1. Flow chart for derivation of cohort 1 sample

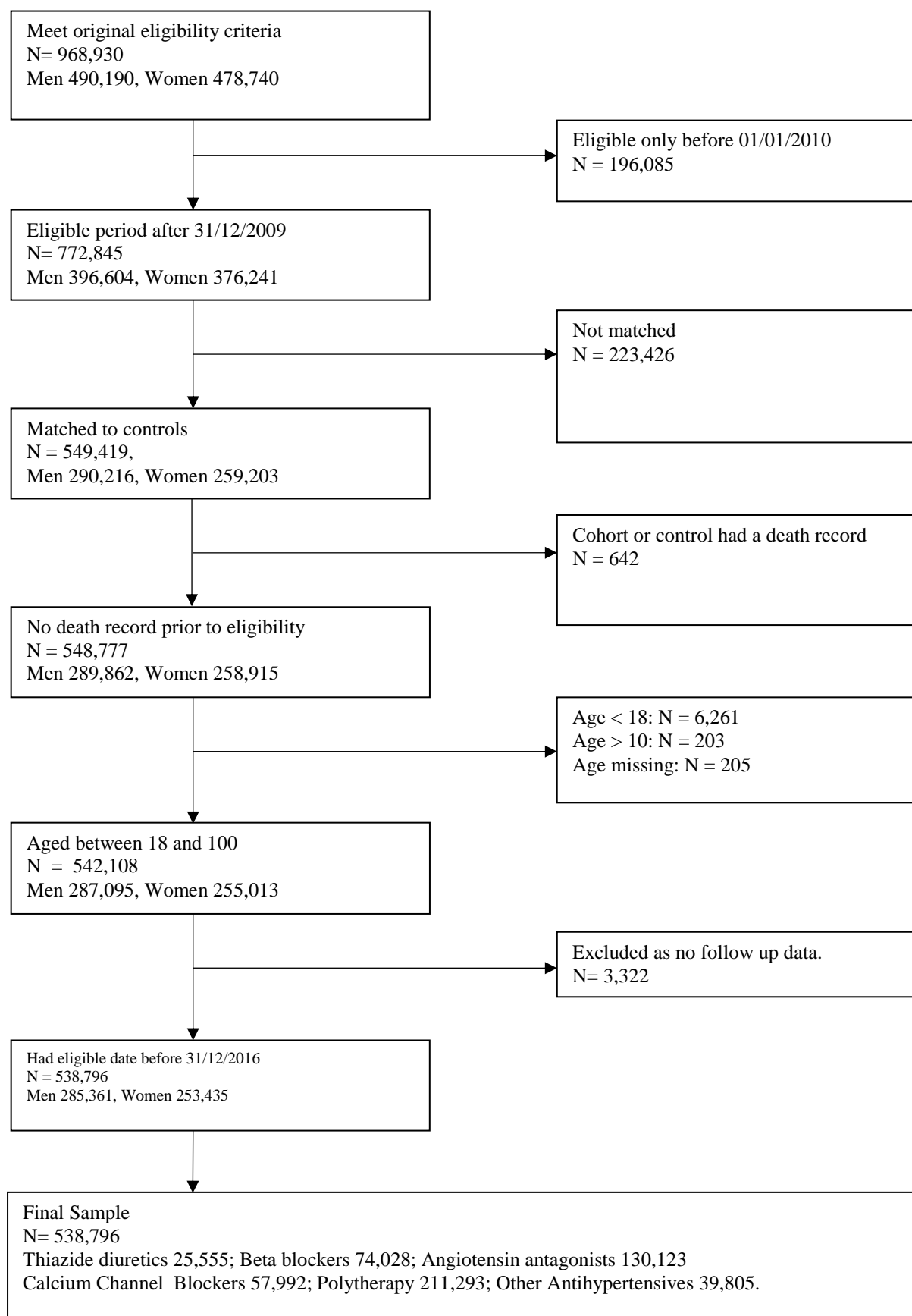


Figure S2: Flow chart for derivation of cohort 2 sample

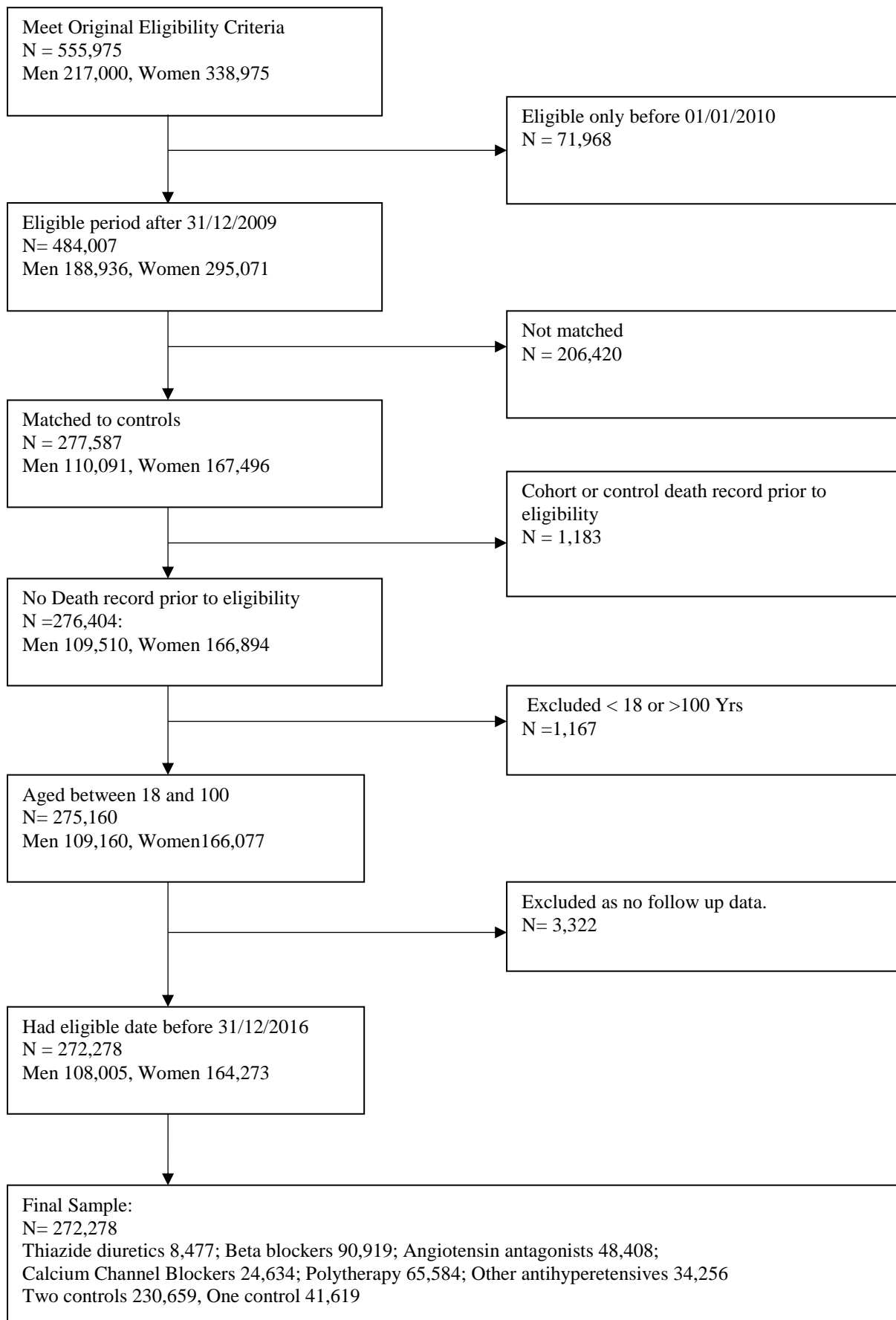
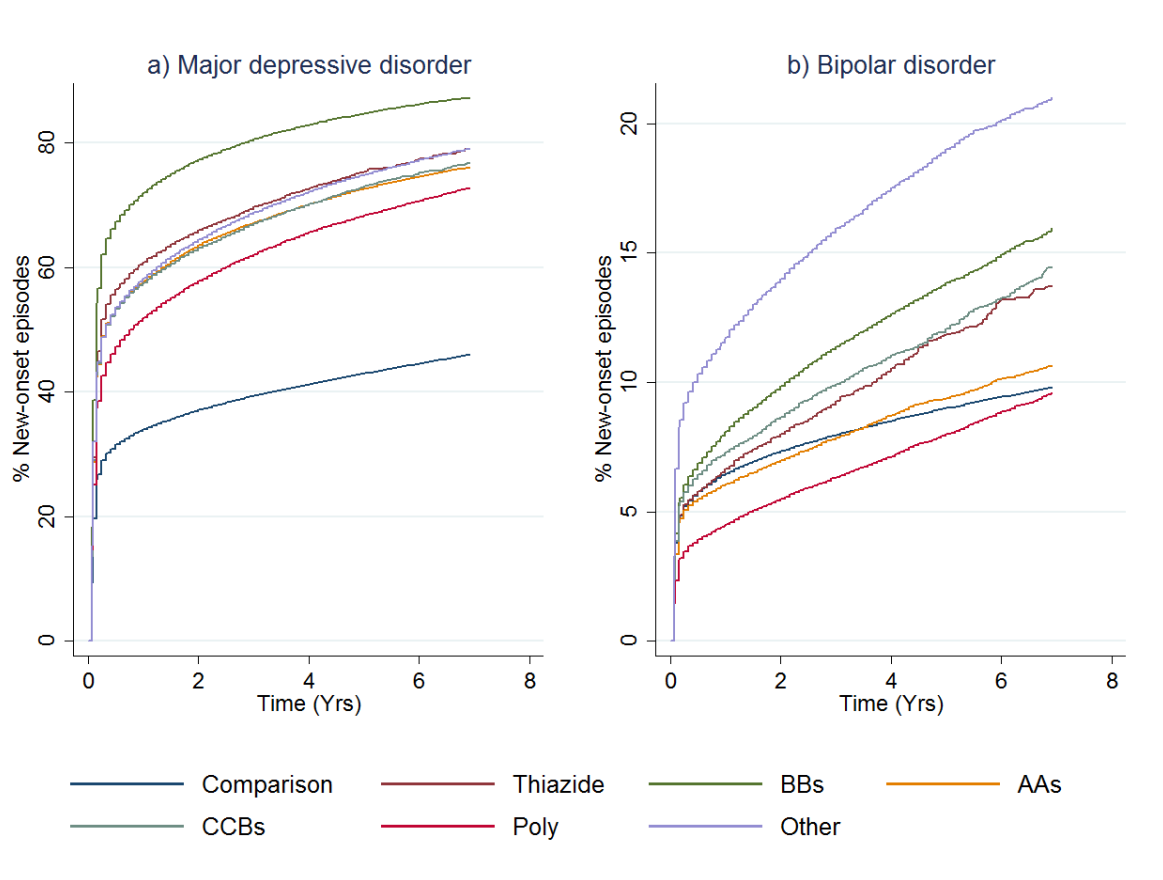


Figure S3: First onset of mood disorders, as indicated by receipt of prescriptions or admission to hospital, by therapy class (people with mental illness).



AA – Angiotensin Antagonists, BB – Beta Blockers, CCB – Calcium Channel Blockers

Figure S3 shows cumulative distributions functions for major depressive disorder (panel a) and bipolar disorder (panel b) by therapy class for people with a history of treatment for mental illness (cohort 2).

Figure S4: Hazard ratios for new onset depression, as indicated by receipt of prescriptions or admission to hospital, by therapy class (people with mental illness).

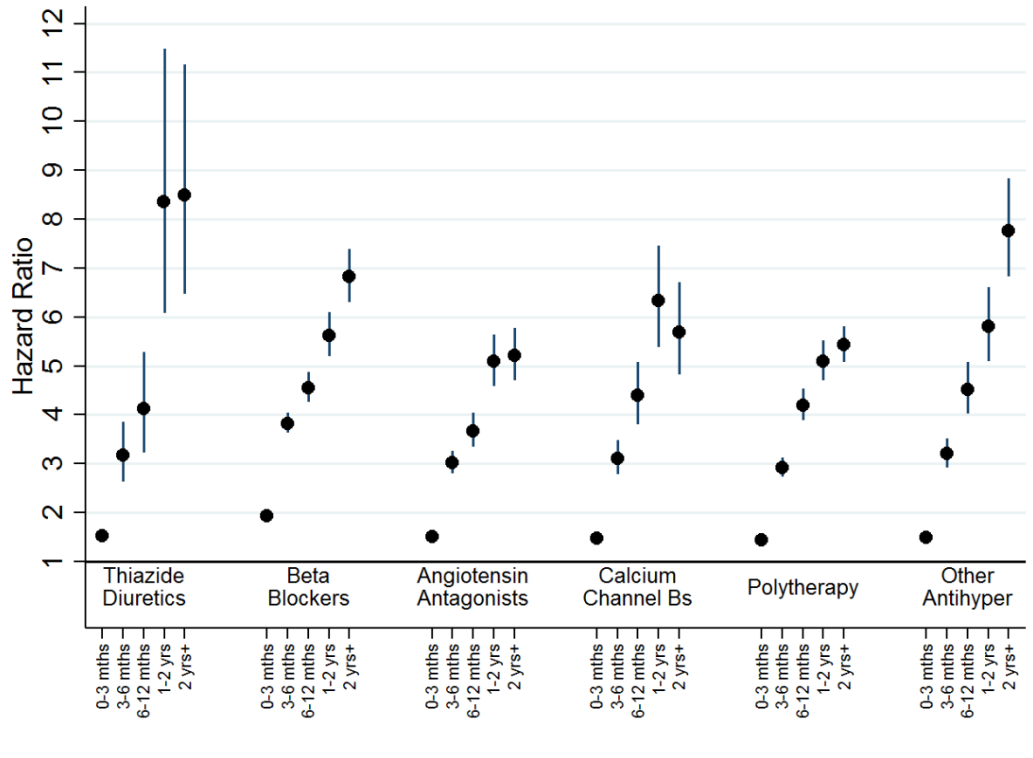


Figure S4: shows hazard ratios for new onset depression by therapy class for people without a history of treatment for mental illness (Cohort 2). Adjustment was carried out for hospital treatment for cardiovascular disease, substance abuse, head injury, self-harm, schizophrenia, major depressive disorder, bipolar disorder, other mood disorders and personality disorder, and pharmaceutical treatment for other cardiovascular drugs, diabetic drugs, hypnotics and anxiolytics, antidepressant drugs, psychoses and related disorders.

Figure S5: Hazard ratios for new onset bipolar disorder, as indicated by receipt of prescriptions or admission to hospital, by therapy class (people with mental illness).

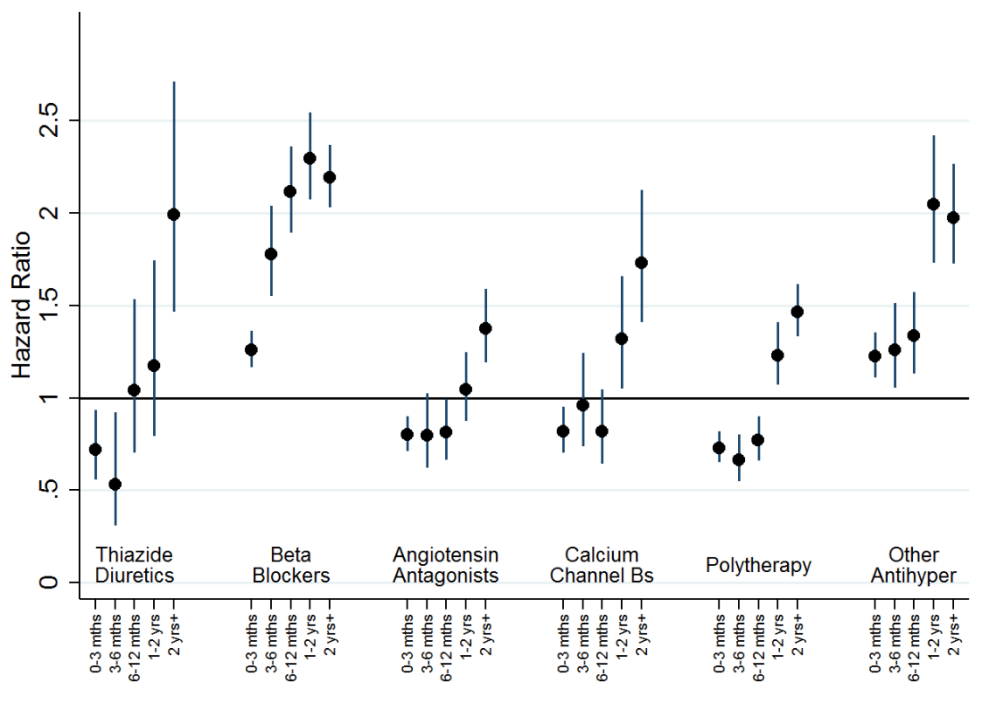


Figure S5 shows hazard ratios for new onset depression by therapy class for people without a history of treatment for mental illness (Cohort 2). Adjustment was carried out for hospital treatment for cardiovascular disease, substance abuse, head injury, self-harm, schizophrenia, major depressive disorder, bipolar disorder, other mood disorders and personality disorder, and pharmaceutical treatment for other cardiovascular drugs, diabetic drugs, hypnotics and anxiolytics, antidepressant drugs, psychoses and related disorders.