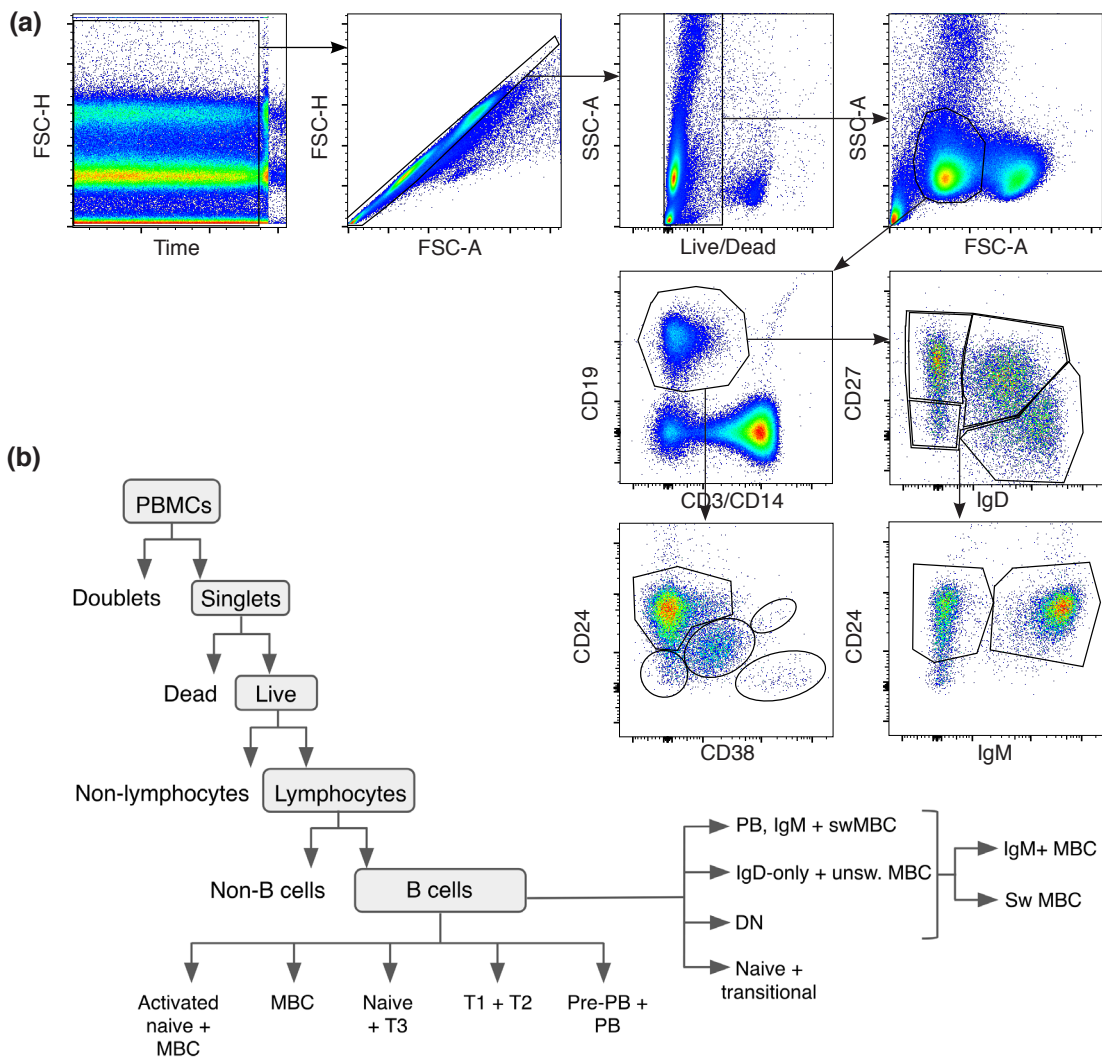
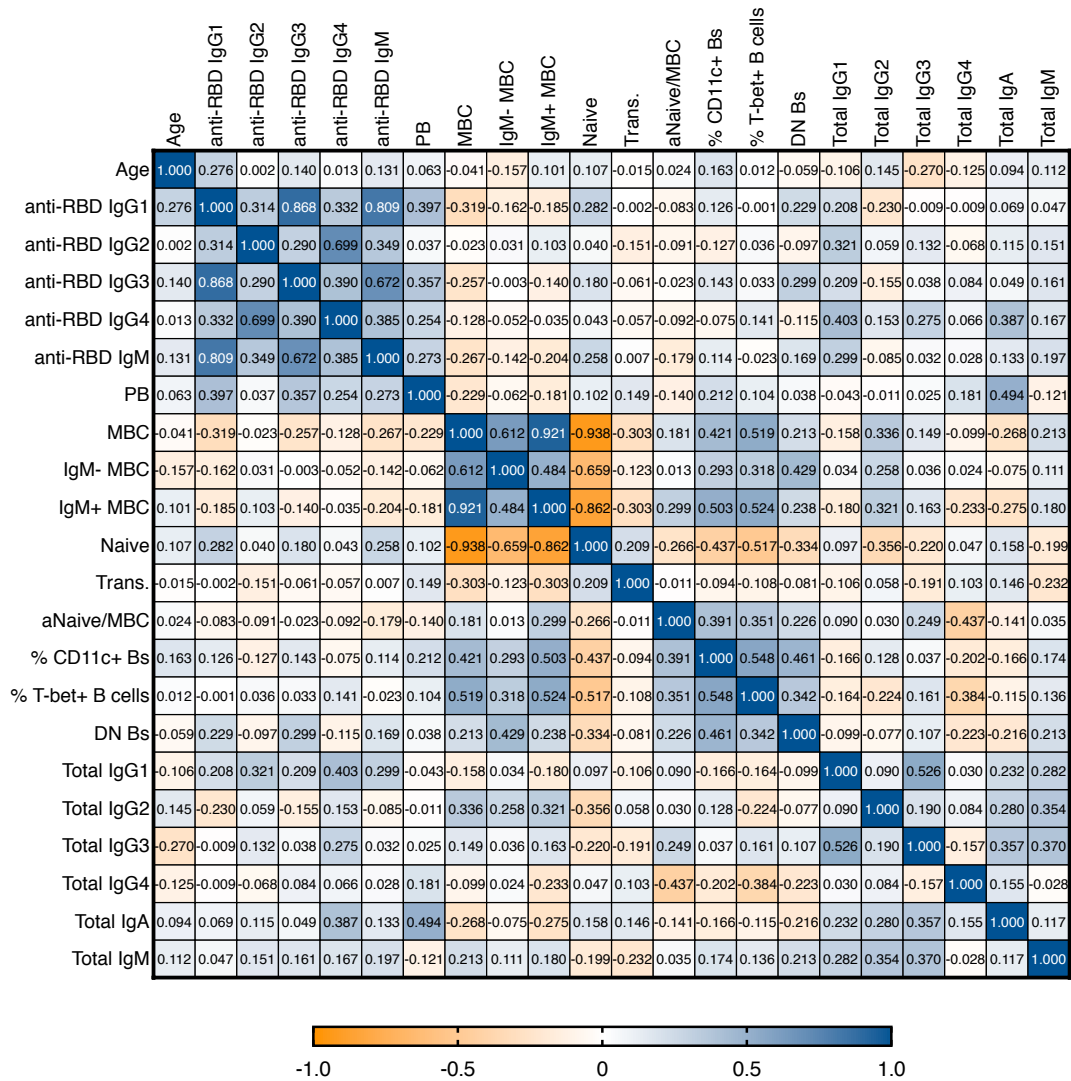


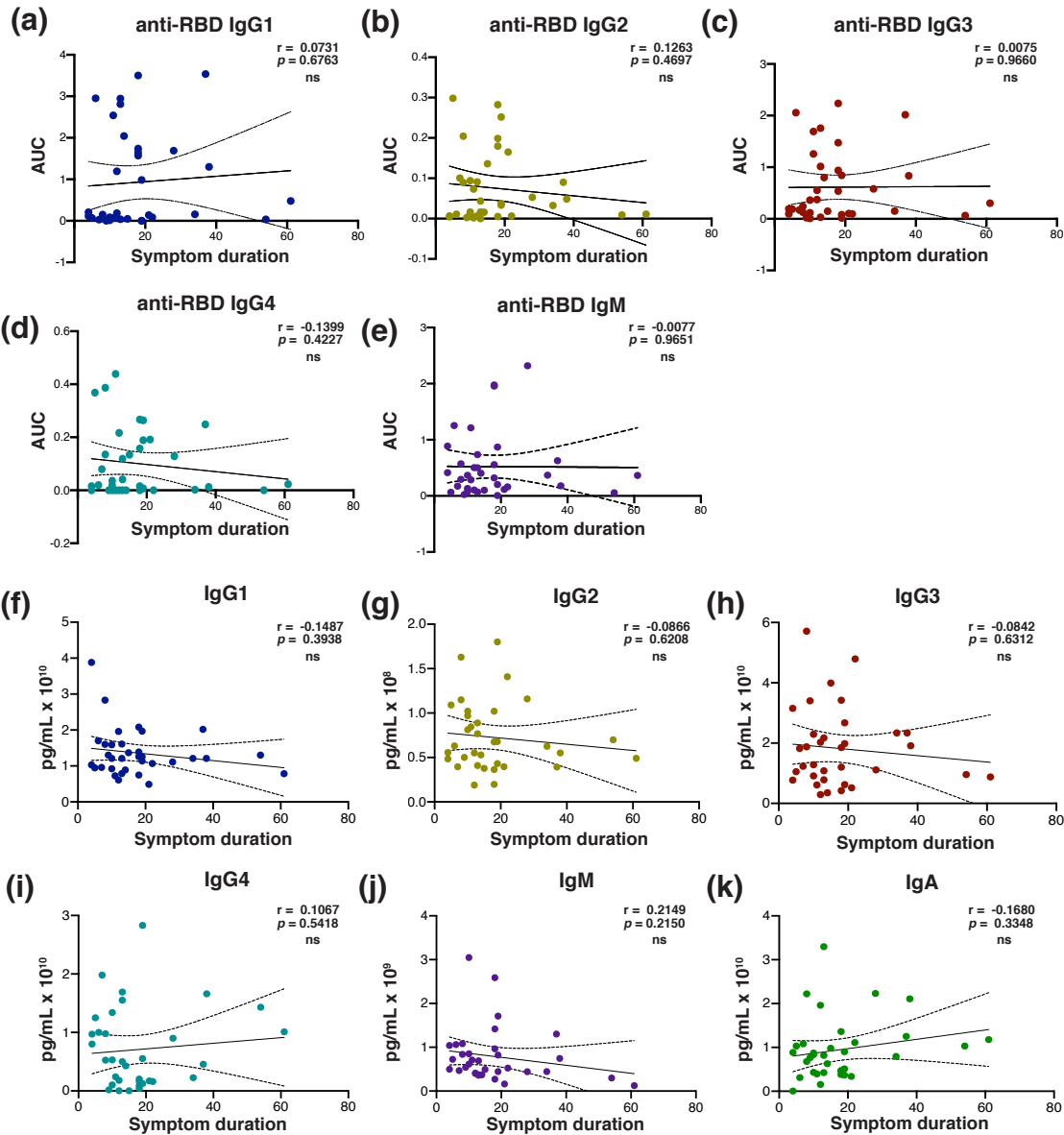
Supplemental figure 1. Demographic data. (a-c) Distribution of (a) gender, (b) age, and (c) ethnicity among the convalescent plasma donor cohort ($n = 40$). (d-e) Distribution of (d) gender and (e) age among healthy donors ($n = 24$). (f-g) Distribution of (f) gender and (g) age among the subset convalescent plasma donor cohort ($n = 17$) analyzed in figure 6, three months after initial visit. (h) Cumulative table of demographic data.



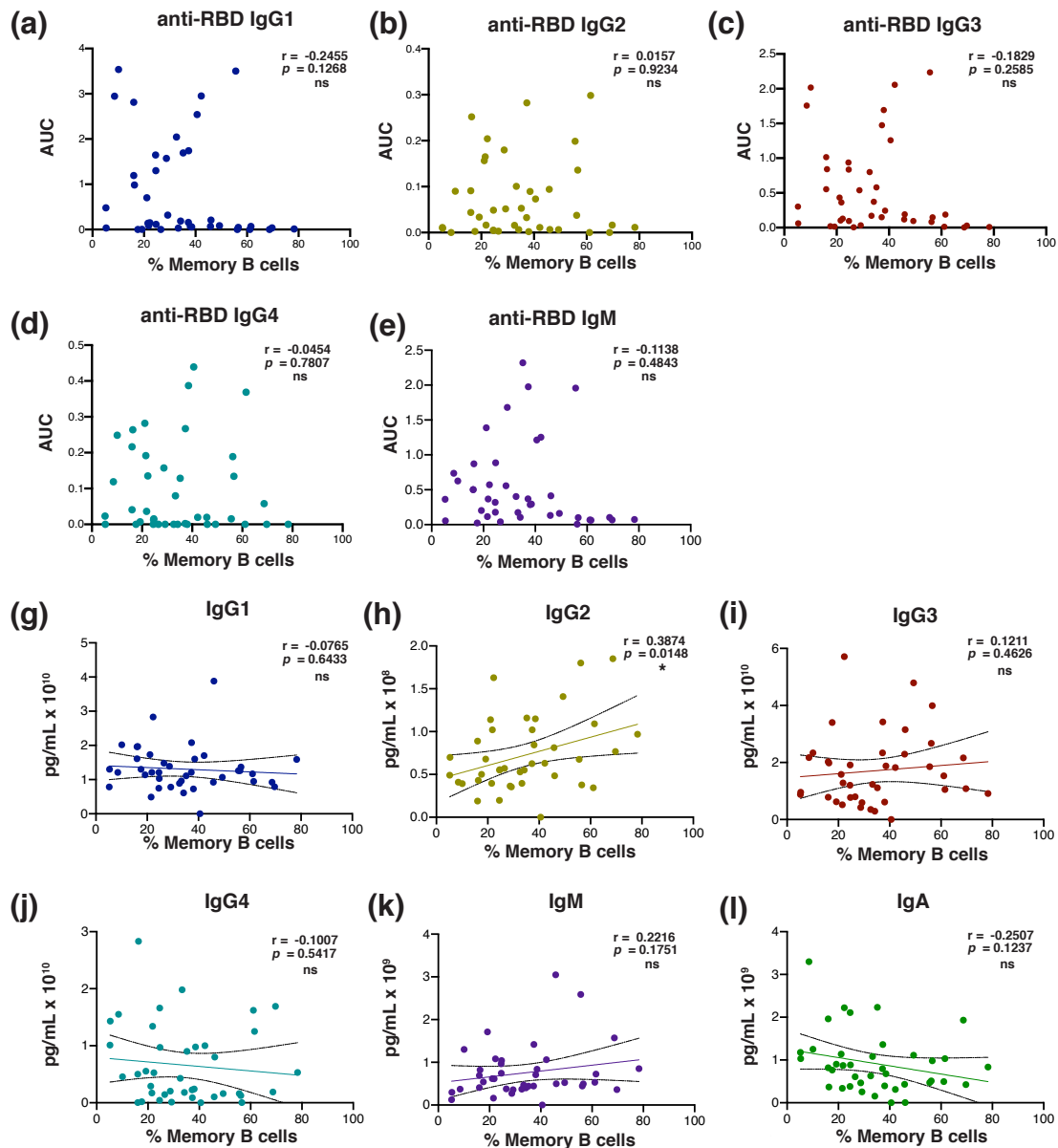
Supplemental figure 2. Flow cytometry gating strategies for B cell subset analysis. (a) Representative plots demonstrating gating strategy for flow cytometric identification of B cell subsets. **(b)** Flow chart showing the dichotomy and subset discrimination used to assess B cell subsets from peripheral blood PBMCs.



Supplemental Figure 3: Correlation matrix. Spearman's r correlation coefficients between variables on opposing axes for convalescent plasma donor cohort ($n = 40$, except for total Ig's: $n = 39$, and T-bet: $n = 35$). Data collected and analyzed as described in **figure S2** (flow cytometry gating) and **figure 5** (plasma antibody assays).



Supplemental Figure 4. Anti-spike receptor binding domain-specific and total antibody levels do not correlate with symptom duration in full cohort of convalescent plasma donors. (a-e) Scatterplot correlation of area under the curve for plasma anti-RBD absorbance vs. symptom duration for individual Ig isotypes and subclasses. (f-k) Scatterplot correlation of total plasma antibody concentration vs. symptom duration for individual Ig isotypes and subclasses. Pearson's correlation r value and 95% confidence intervals shown with two-tailed p value, $\alpha = 0.05$. $n = 35$ (all symptomatic subjects) for all plots.



Supplemental Figure 5. Memory B cell frequency correlation with anti-RBD antibody and total immunoglobulin in full cohort of convalescent plasma donors. (a-e) Scatterplot correlation of area under the curve for anti-RBD plasma antibody absorbance vs. memory B cell frequency for individual Ig isotypes and subclasses. **(g-l)** Scatterplot correlation of total plasma antibody concentration vs. memory B cell frequency from all convalescent subjects. Pearson's correlation r value and 95% confidence intervals shown with two-tailed p value, $\alpha = 0.05$. $n = 40$ for all plots.