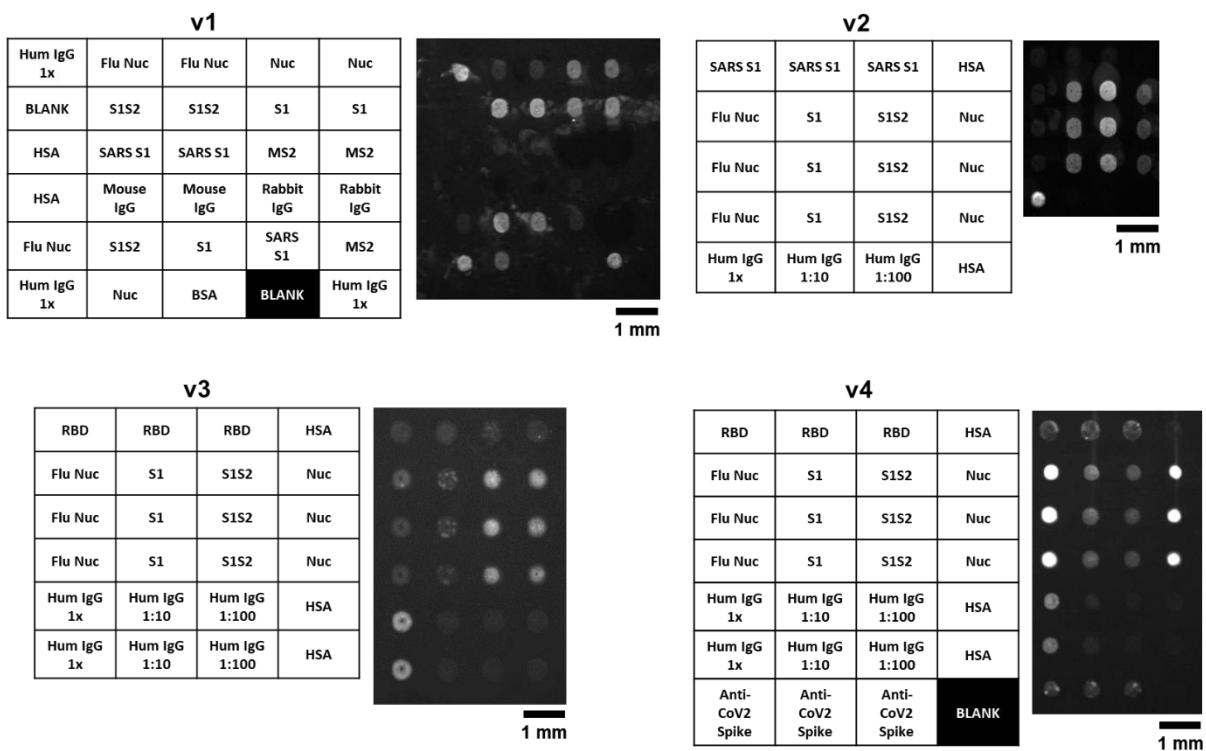
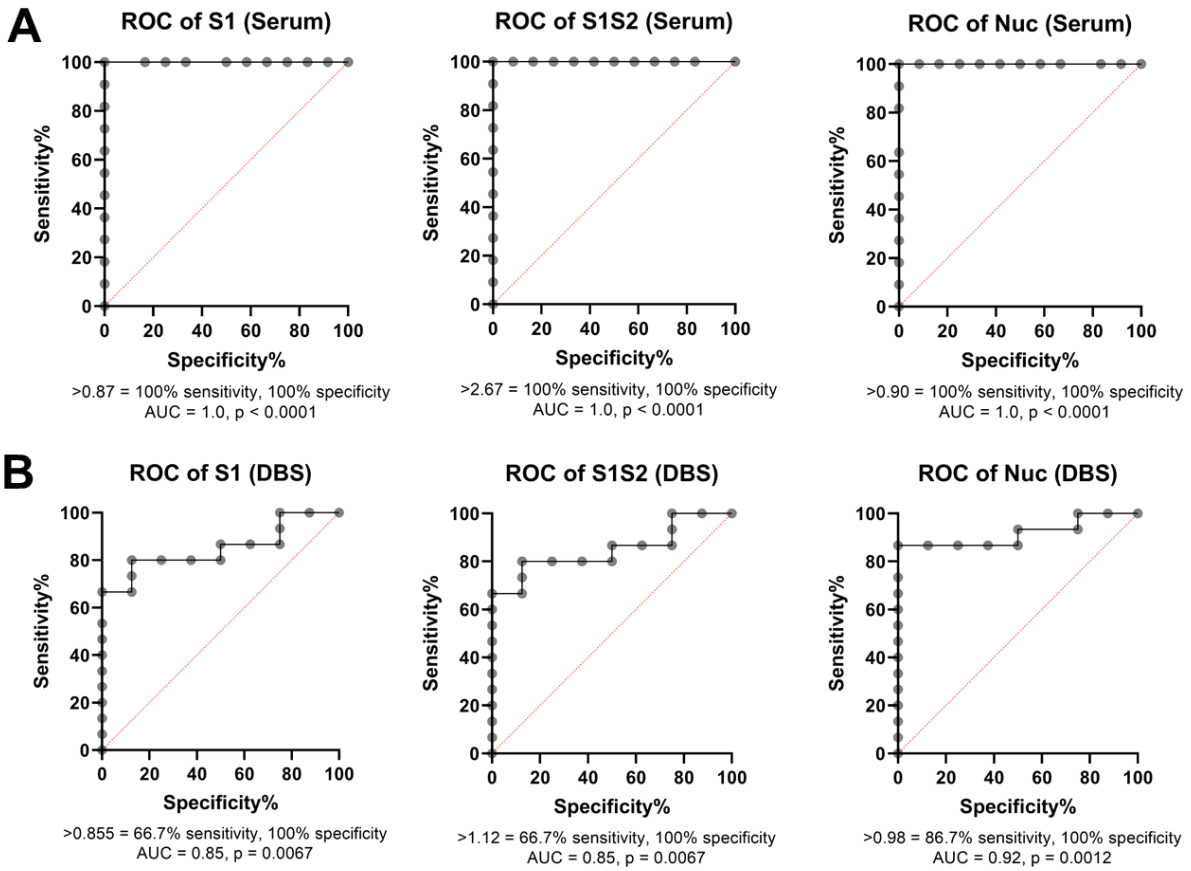


## Supplementary Material



**Supplementary Figure S1.** Four different versions of the GC-FP biosensor chip were developed. The arrangement of protein / antigen spots is shown for each chip version, as well as a representative GC-FP fluorescence image.



**Supplementary Figure S2.** Receiver operator characteristic (ROC) analysis for serum (A) and dried blood spot (B) samples with known COVID-19 infection history. The area under the curve (AUC) was calculated for each plot and the associated p value for this analysis is shown. The GC-FP detection ratio needed for 100% specificity and maximum sensitivity is also reported for each plot.

**Supplementary Table T1**

Serum samples (Verified COVID-19 status)						
Sample ID	S1	S1S2	Nuc	Nuc-ELISA (score / A450)	Nuc-MIA (score / MFI)	Notes
2_1	0.67	1.55	0.81	neg / 0.054	n/a	presumed negative, no known exposure
2_2	0.61	0.94	0.72	neg / 0.027	n/a	presumed negative, no known exposure
2_3	0.79	0.77	0.74	neg / 0.013	n/a	presumed negative, no known exposure
2_4	0.79	0.77	0.67	neg / 0.046	n/a	presumed negative, no known exposure
2_5	0.52	1.33	0.77	neg / 0.032	n/a	presumed negative, no known exposure
2_6	0.61	1.60	0.70	neg / 0.031	n/a	presumed negative, no known exposure
2_7	0.62	1.37	0.71	neg / 0.037	n/a	presumed negative, no known exposure
DIL0526-26	0.42	0.92	0.59	n/a	neg / 259	2009 pre-COVID
DIL0526-27	0.41	1.20	0.52	n/a	neg / 421	2009 pre-COVID
DIL0526-28	0.45	1.23	0.65	n/a	neg / 1,563	2009 pre-COVID
DIL0526-29	0.48	2.03	0.59	n/a	neg / 238	2009 pre-COVID
DIL0526-30	0.37	1.36	0.43	n/a	neg / 719	2009 pre-COVID
1_1	<b>1.20</b>	<b>3.31</b>	<b>1.16</b>	<b>pos / 0.123</b>	n/a	Positive by RT-PCR
1_2	<b>3.69</b>	<b>5.65</b>	<b>1.09</b>	<b>pos / 0.178</b>	n/a	Positive by RT-PCR
1_3	<b>7.65</b>	<b>11.73</b>	<b>4.80</b>	<b>pos / 1.577</b>	n/a	Positive by RT-PCR
1_4	<b>1.49</b>	<b>5.41</b>	<b>0.99</b>	<b>neg / 0.043</b>	n/a	Positive by RT-PCR
1_5	<b>1.56</b>	<b>4.59</b>	<b>2.23</b>	<b>pos / 0.491</b>	n/a	Positive by RT-PCR
DIL0526-3	<b>7.81</b>	<b>9.44</b>	<b>3.89</b>	n/a	<b>pos / 45,543</b>	Positive by RT-PCR
DIL0526-5	<b>8.00</b>	<b>7.61</b>	<b>4.55</b>	n/a	<b>pos / 47,301</b>	Positive by RT-PCR
DIL0526-8	<b>3.45</b>	<b>6.23</b>	<b>3.00</b>	n/a	<b>pos / 39,255</b>	Positive by RT-PCR
DIL0526-13	<b>2.35</b>	<b>4.06</b>	<b>1.11</b>	n/a	<b>pos / 11,577</b>	Positive by RT-PCR
DIL0526-18	<b>1.12</b>	<b>6.31</b>	<b>2.60</b>	n/a	<b>pos / 34,715</b>	Positive by RT-PCR
DIL0526-21	<b>0.95</b>	<b>4.16</b>	<b>1.11</b>	n/a	<b>pos / 28,806</b>	Positive by RT-PCR

**ROC**

**threshold**      0.87      2.67      0.9

Dried Blood Spots (Verified COVID-19 status)						
Sample ID	S1	S1S2	Nuc	Nuc ROC Score	ML Score	Notes
COV_5	0.54	0.73	0.70	neg	neg	Negative by RT-PCR
COV_6	0.72	1.11	0.70	neg	neg	Negative by RT-PCR
COV_7	0.06	0.08	0.06	neg	neg	Negative by RT-PCR
COV_9	0.85	1.00	0.95	neg	neg	Negative by RT-PCR
COV_14	0.46	0.52	0.48	neg	neg	Negative by RT-PCR
COV_16	0.77	0.93	0.84	neg	neg	Negative by RT-PCR
COV_18	0.62	0.76	0.74	neg	neg	Negative by RT-PCR
COV_12	0.76	0.87	0.85	neg	neg	IgG and IgM negative
COV_2	0.65	0.80	0.72	neg	neg	Positive by RT-PCR
COV_3	<b>1.59</b>	<b>1.13</b>	<b>5.63</b>	<b>pos</b>	<b>pos</b>	Positive by RT-PCR
COV_13	0.53	0.67	0.65	neg	neg	Positive by RT-PCR
COV_17	<b>0.94</b>	1.11	<b>1.01</b>	<b>pos</b>	<b>pos</b>	Positive by RT-PCR
COV_28	0.80	<b>1.37</b>	<b>3.53</b>	<b>pos</b>	<b>pos</b>	Positive by RT-PCR
COV_29	<b>1.70</b>	<b>1.51</b>	<b>1.57</b>	<b>pos</b>	<b>pos</b>	Positive by RT-PCR

COV_40	<b>1.15</b>	<b>1.50</b>	<b>2.37</b>	<b>pos</b>	<b>pos</b>	Positive by RT-PCR
COV_41	<b>0.86</b>	1.06	<b>1.02</b>	<b>pos</b>	<b>pos</b>	Positive by RT-PCR
COV_43	0.52	0.70	<b>1.19</b>	<b>pos</b>	neg	Positive by RT-PCR
COV_44	<b>3.13</b>	<b>2.85</b>	<b>8.92</b>	<b>pos</b>	<b>pos</b>	Positive by RT-PCR
NYC_1	<b>1.16</b>	<b>2.09</b>	<b>1.29</b>	<b>pos</b>	<b>pos</b>	Positive by RT-PCR
NYC_5	<b>0.95</b>	<b>2.09</b>	<b>1.90</b>	<b>pos</b>	<b>pos</b>	Positive by RT-PCR, IgG indeterminate
COV_19	<b>0.89</b>	<b>1.52</b>	<b>1.37</b>	<b>pos</b>	<b>pos</b>	IgG positive, no PCR test
COV_38	<b>0.86</b>	<b>1.33</b>	<b>1.30</b>	<b>pos</b>	<b>pos</b>	IgG positive, no PCR test
COV_24	0.84	<b>1.16</b>	<b>1.01</b>	<b>pos</b>	<b>pos</b>	IgM positive, no PCR test

**ROC threshold**      0.855      1.12      0.98

<b>Dried Blood Spots (Unverified COVID-19 status)</b>						
<b>Sample ID</b>	<b>S1</b>	<b>S1S2</b>	<b>Nuc</b>	<b>Nuc ROC Score</b>	<b>ML Score</b>	<b>Notes</b>
COV_1	0.43	<b>1.67</b>	0.70	neg	<b>pos</b>	presumed negative, no known exposure
COV_4	0.60	0.76	0.81	neg	neg	presumed negative, no known exposure
COV_8	0.76	0.90	0.86	neg	neg	presumed negative, no known exposure
COV_10	0.79	0.86	0.87	neg	neg	presumed negative, no known exposure
COV_11	0.88	0.99	0.96	neg	neg	presumed negative, no known exposure
COV_15	0.52	0.59	0.59	neg	neg	presumed negative, no known exposure
COV_20	0.82	0.91	0.92	neg	neg	presumed negative, no known exposure
COV_21	0.69	0.81	0.81	neg	neg	presumed negative, no known exposure
COV_22	0.69	0.82	0.81	neg	neg	presumed negative, no known exposure
COV_23	0.82	0.88	0.89	neg	neg	presumed negative, no known exposure
COV_25	0.60	0.69	0.63	neg	neg	presumed negative, no known exposure
COV_26	0.62	0.82	0.79	neg	neg	presumed negative, no known exposure
COV_27	0.48	0.75	0.57	neg	neg	presumed negative, no known exposure
COV_30	0.41	0.60	0.56	neg	neg	presumed negative, no known exposure
COV_31	0.32	0.64	0.47	neg	neg	presumed negative, no known exposure
COV_32	0.65	0.81	0.72	neg	neg	presumed negative, no known exposure
COV_33	0.46	0.64	0.54	neg	neg	presumed negative, no known exposure
COV_34	0.58	0.71	0.71	neg	neg	presumed negative, no known exposure
COV_35	0.43	0.58	0.53	neg	neg	presumed negative, no known exposure
COV_36	0.75	1.06	0.89	neg	neg	presumed negative, no known exposure
COV_37	0.78	<b>1.40</b>	<b>0.99</b>	<b>pos</b>	<b>pos</b>	presumed negative, no known exposure
COV_39	0.40	0.58	0.57	neg	neg	presumed negative, no known exposure
COV_42	0.53	0.72	0.68	neg	neg	presumed negative, no known exposure
NYC_9	0.73	0.92	<b>1.43</b>	<b>pos</b>	<b>pos</b>	presumed negative, no known exposure
NYC_12	0.58	0.68	<b>1.30</b>	<b>pos</b>	neg	presumed negative, no known exposure
VT_3	0.70	0.96	<b>1.04</b>	<b>pos</b>	neg	presumed negative, no known exposure
VT_4	0.75	0.91	<b>1.04</b>	<b>pos</b>	neg	presumed negative, no known exposure
NYC_2	0.53	0.82	<b>1.80</b>	<b>pos</b>	<b>pos</b>	Lives with COVID positive subject, asymptomatic
NYC_3	<b>1.43</b>	<b>2.03</b>	<b>1.46</b>	<b>pos</b>	<b>pos</b>	Lives with COVID positive subject, asymptomatic
NYC_6	0.73	0.94	<b>1.15</b>	<b>pos</b>	neg	Lives with COVID positive subject, asymptomatic
NYC_4	<b>1.22</b>	<b>2.43</b>	<b>2.37</b>	<b>pos</b>	<b>pos</b>	Lives with COVID positive subject, symptomatic
NYC_7	<b>1.17</b>	<b>2.16</b>	<b>1.32</b>	<b>pos</b>	<b>pos</b>	Lives with COVID positive subject, symptomatic

NYC_8	<b>2.55</b>	<b>3.09</b>	<b>2.30</b>	<i>pos</i>	<i>pos</i>	Lives with COVID positive subject, symptomatic
NYC_10	0.63	<b>2.94</b>	<b>1.73</b>	<i>pos</i>	<i>pos</i>	International travel during pandemic, minor symptoms
NYC_11	0.65	<b>1.27</b>	<b>2.22</b>	<i>pos</i>	<i>pos</i>	International travel during pandemic, minor symptoms
VT_1	<b>0.90</b>	<b>1.87</b>	<b>1.97</b>	<i>pos</i>	<i>pos</i>	Lives with symptomatic subject, minor symptoms
VT_2	0.80	1.03	<b>2.46</b>	<i>pos</i>	<i>pos</i>	Symptomatic, but no COVID test
VT_5	0.75	1.07	<b>1.37</b>	<i>pos</i>	<i>pos</i>	Exposed to subject w/ symptoms but no COVID test
VT_6	0.70	<b>1.31</b>	<b>1.48</b>	<i>pos</i>	<i>pos</i>	Exposed to subject w/ symptoms but no COVID test
<b>ROC threshold</b>	0.855	1.12	0.98			