

## Supplementary Information

### Rapid “mix and read” assay for scalable detection of SARS-CoV-2 antibodies in patient plasma

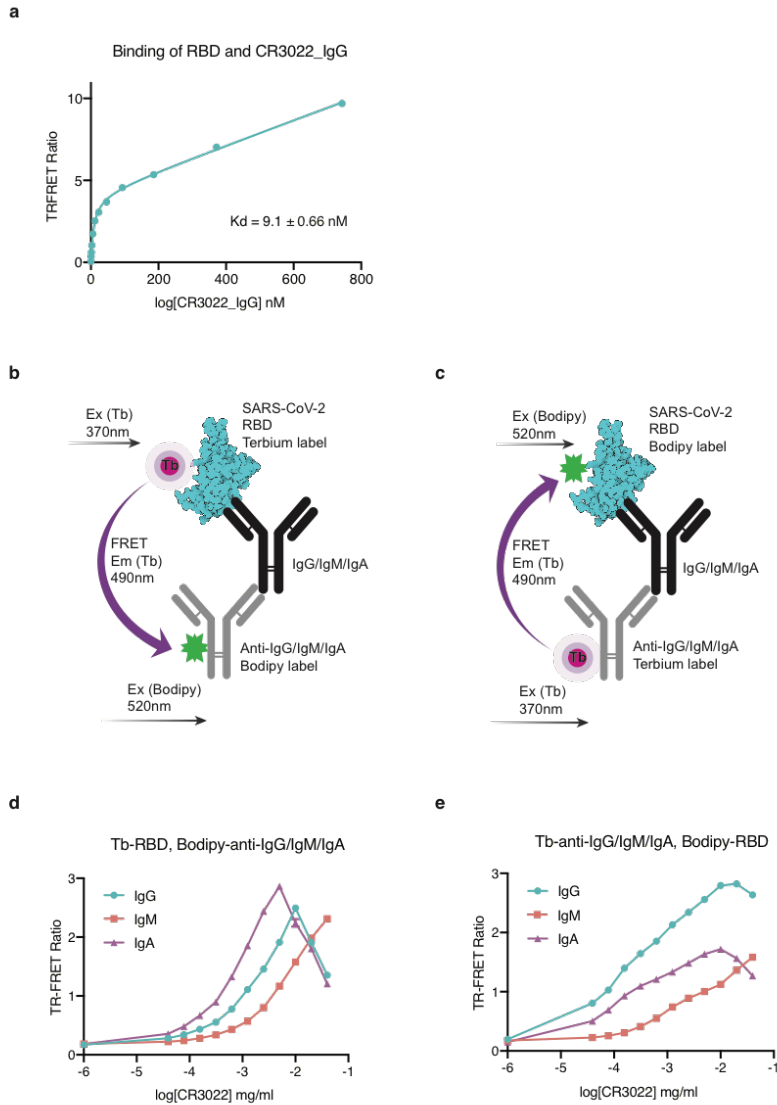
**Authors:** Hong Yue<sup>1,2,\*</sup>, Radosław P. Nowak<sup>1,2,\*</sup>, Daan Overwijn<sup>1,2</sup>, N. Connor Payne<sup>3,4</sup>, Stephanie Fischinger<sup>5</sup>, Caroline Atyeo<sup>5</sup>, Lindsey R. Baden<sup>6</sup>, Eric J. Nilles<sup>7</sup>, Elizabeth W. Karlson<sup>6</sup>, Xu G. Yu<sup>5</sup>, Jonathan Z. Li<sup>6</sup>, Galit Alter<sup>5</sup>, Ralph Mazitschek<sup>4,8</sup>, Eric S. Fischer<sup>1,2,#</sup>

**Affiliations:**

<sup>1</sup> Department of Cancer Biology, Dana Farber Cancer Institute, Boston MA. <sup>2</sup> Department of Biological Chemistry and Molecular Pharmacology, Harvard Medical School, Boston, MA. <sup>3</sup> Department of Chemistry & Chemical Biology, Harvard University, Cambridge, MA. <sup>4</sup> Center for Systems Biology, Massachusetts General Hospital, Boston, MA. <sup>5</sup> Ragon Institute of MGH, MIT, and Harvard, Cambridge, MA. <sup>6</sup> Department of Medicine, Brigham and Women’s Hospital, Boston, MA. <sup>7</sup> Department of Emergency Medicine, Brigham and Women’s Hospital, Boston, MA. <sup>8</sup> Broad Institute of MIT and Harvard, Cambridge, MA.

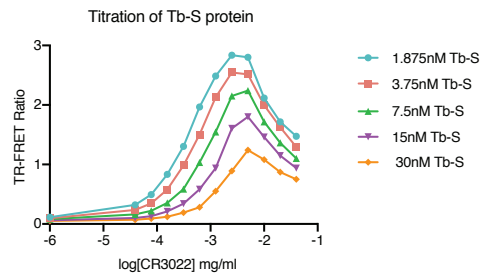
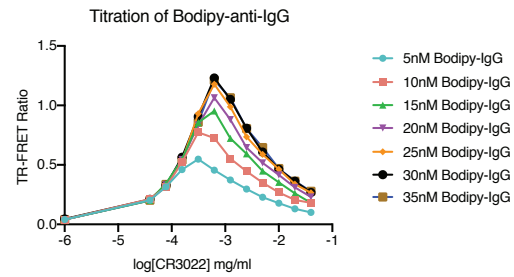
\*These authors contributed equally

#Corresponding Author: Eric S. Fischer ([eric\\_fischer@dfci.harvard.edu](mailto:eric_fischer@dfci.harvard.edu))

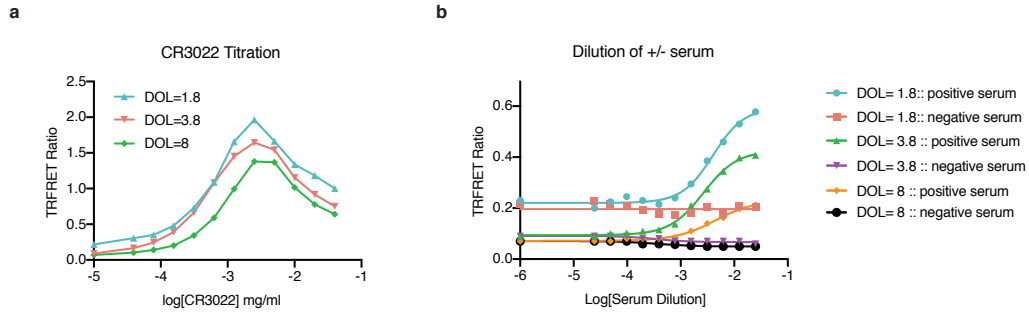


**Supplementary Figure 1. a**, Titration of BODIPY labeled CR3022 IgG antibody into Tb-labelled RBD mix (15 nM final). The Binding affinity of CR3022 and RBD ( $K_{d \text{ app}}$ ) were calculated using a nonlinear regression fit model (GraphPad Prism Software). Data are represented as means  $\pm$  SD of three replicates ( $n = 3$ ). **b**, Alternative labeling strategies for the TR-FRET assay. Donor fluorophore is located on the antigen (RBD) and the acceptor fluorophore on the detection antibody ( $\alpha$ IgG/ $\alpha$ IgM/ $\alpha$ IgA) or donor fluorophore is located on the detection antibody ( $\alpha$ IgG/ $\alpha$ IgM/ $\alpha$ IgA) and the acceptor fluorophore on the antigen (RBD). **d**, Titration of CR3022 IgG/IgM/IgA1 into preformed mix of Tb-RBD protein (15 nM final) and BODIPY labeled

$\alpha$ IgG/ $\alpha$ IgM/ $\alpha$ IgA (250 nM final). **e**, Titration of CR3022 IgG/IgM/IgA1 into preformed mix of BODIPY-RBD protein (250 nM final) and Tb-labeled  $\alpha$ IgG (3nM final)/  $\alpha$ IgM (12 nM final)/ $\alpha$ IgA (7.5 nM final).

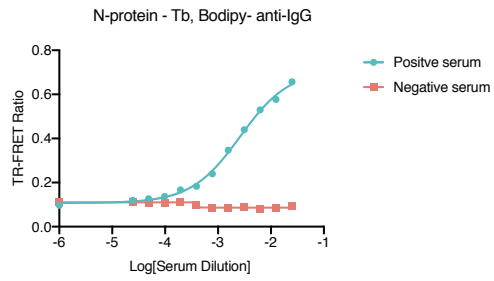
**a****b**

**Supplementary Figure 2. Optimization of antigen amount, detection antibody amount, detecting antibody dilutions. a,** Titration of CR3022 IgG into BODIPY- $\alpha$ IgG Ab (250 nM final) with varying concentrations of Tb-S protein. **b,** Titration of CR3022 IgG into Tb-S (7.5 nM final) with varying concentrations of BODIPY- $\alpha$ IgG. Data is singlicate (n=1).



**Supplementary Figure 3. Optimization of degree of labeling of Tb-S protein. a,** Titration of CR3022 IgG into BODIPY- $\alpha$ IgG Ab (250 nM final) with Tb-S (7.5 nM final) with varying degree of labeling. **b,** Titration of positive or negative serum into BODIPY- $\alpha$ IgG Ab (250 nM final) with Tb-S (7.5 nM final) with varying degree of labeling. Data is singlicate (n=1).

a



**Supplementary Figure 4. TR-FRET  $\alpha$ IgG-N protein assay. a,** Titration of positive and negative serum into BODIPY- $\alpha$ IgG Ab (250 nM final) with biotinylated N (10 nM final) and Tb-Streptavidin (4 nM final). Data is singlicate (n=1).