

Synchronised inflations generate greater gravity dependent lung ventilation in neonates

Dowse G^{1,2}, Perkins E^{1,3}, Thomson J^{1,2}, Schinckel N^{1,2}, Pereira-Fantini PM^{1,2}, Tingay DG^{1,2,3}

¹Neonatal Research, Murdoch Children's Research Institute, Parkville, Australia

²The University of Melbourne, Parkville, Australia

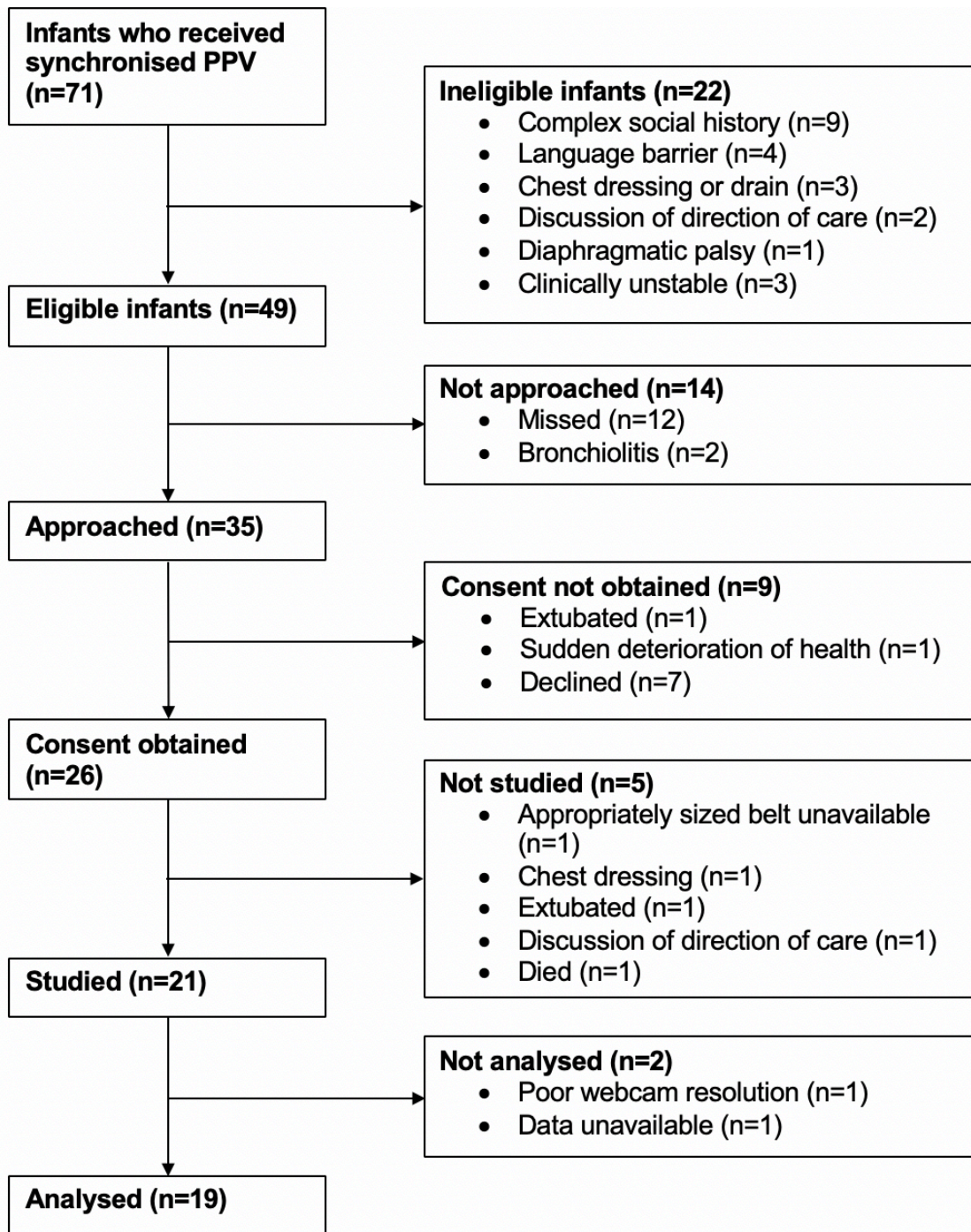
³Neonatology, The Royal Children's Hospital, Parkville, Australia

Online Data Supplementary Results

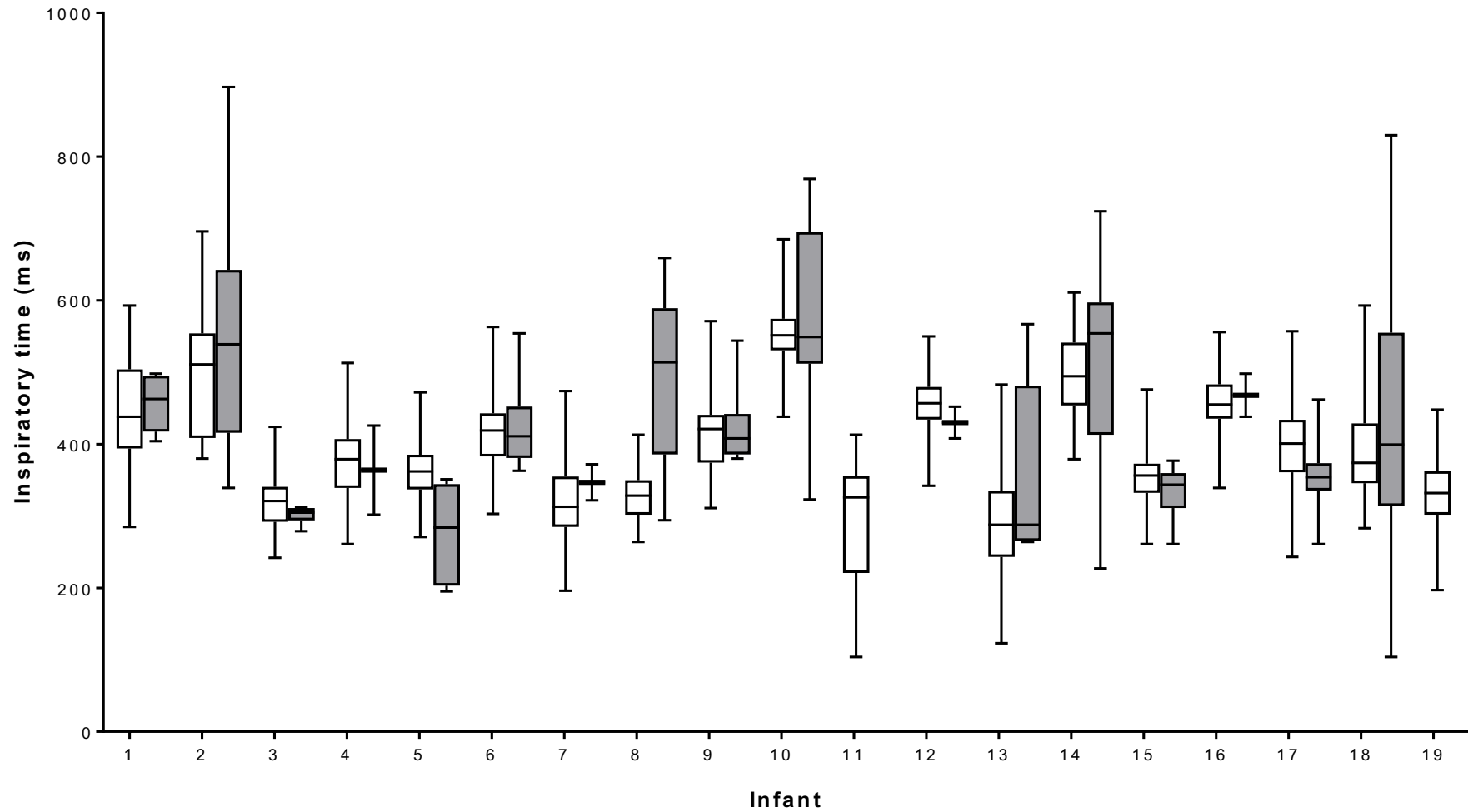
Supplementary Table 1. Percentage of unventilated lung tissue during synchronous and asynchronous inflations.

Region of interest	Synchronous (n=2462 inflations)	Asynchronous (n=287 inflations)	p value
Total lung	8.7 (3.6)	8.0 (3.1)	0.371
Gravity non-dependent lung	6.3 (2.9)	4.4 (3.5)	0.104
Gravity dependent lung	2.4 (3.0)	3.6 (3.5)	0.213

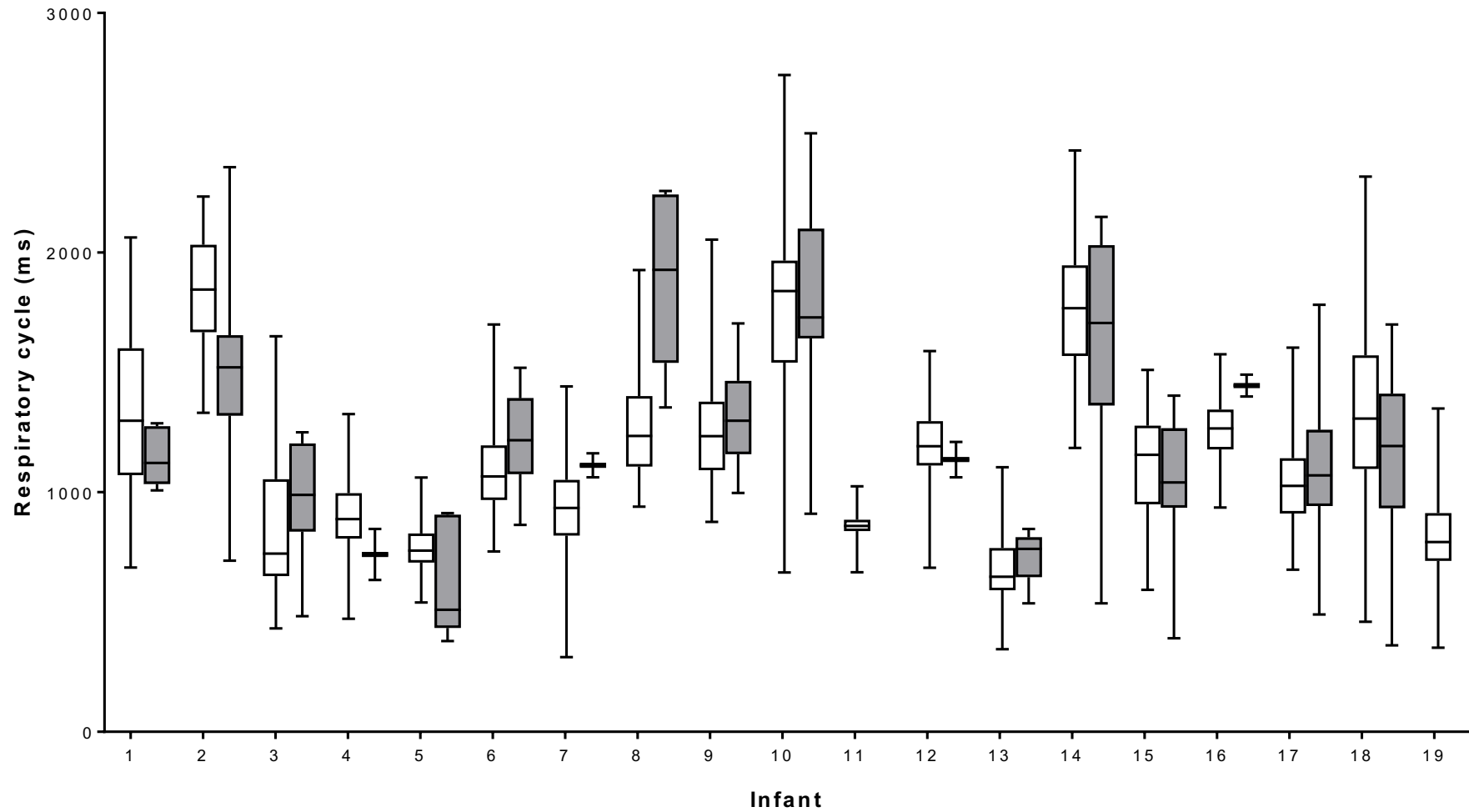
Mean (SD). Welch's t-test with cluster analysis.



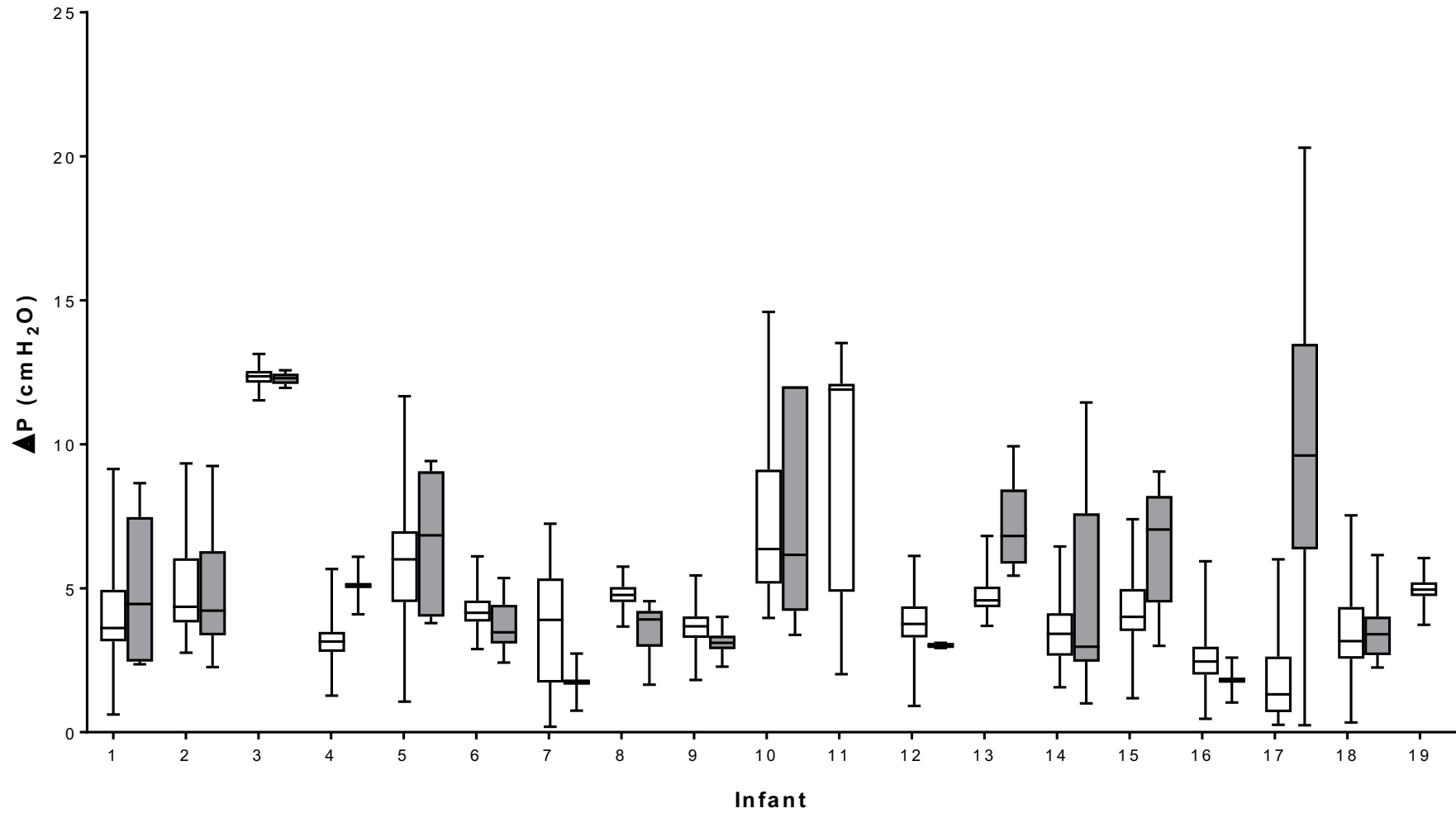
Online Data Supplementary Figure 1. Study population recruitment.



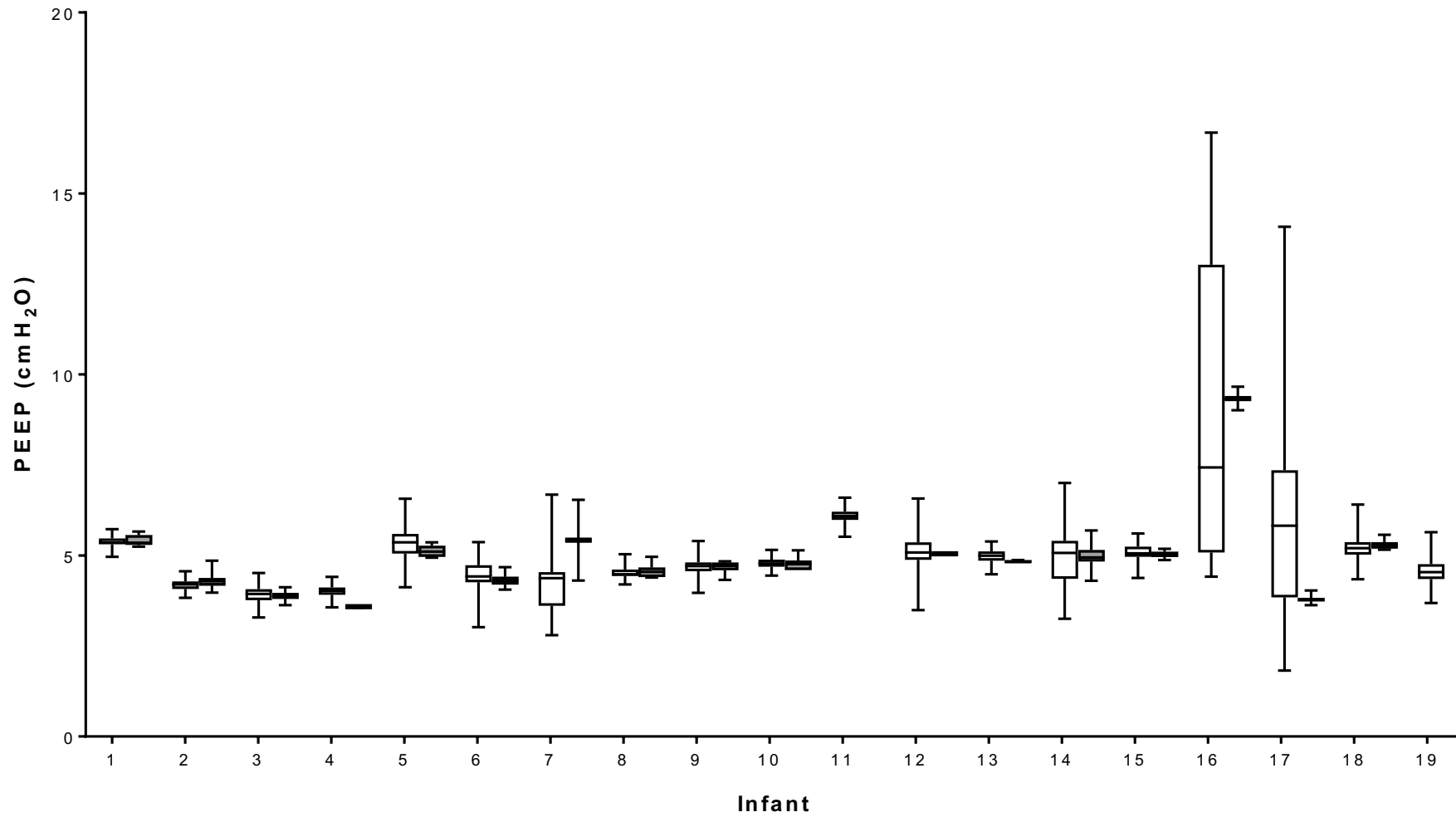
Online Data Supplementary Figure 2. Inspiratory time for synchronous (white) and asynchronous (grey) inflations by infant. In Infants 11 and 19, all inflations were synchronous. Boxes represent median and interquartile range; error bars minimum to maximum values.



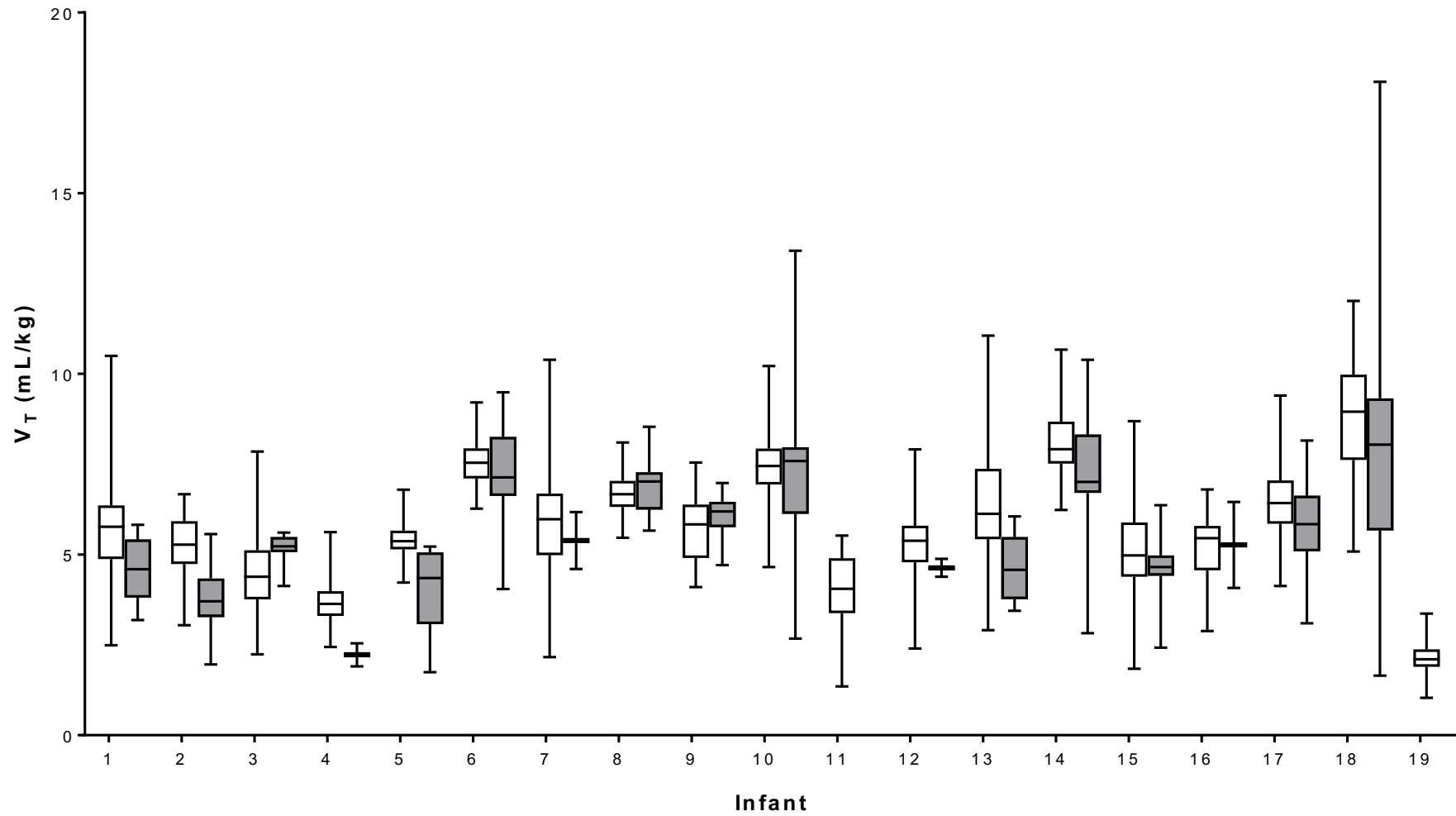
Online Data Supplementary Figure 3. Respiratory cycle duration for synchronous (white) and asynchronous (grey) inflations by infant. In Infants 11 and 19, all inflations were synchronous. Boxes represent median and interquartile range; error bars minimum to maximum values.



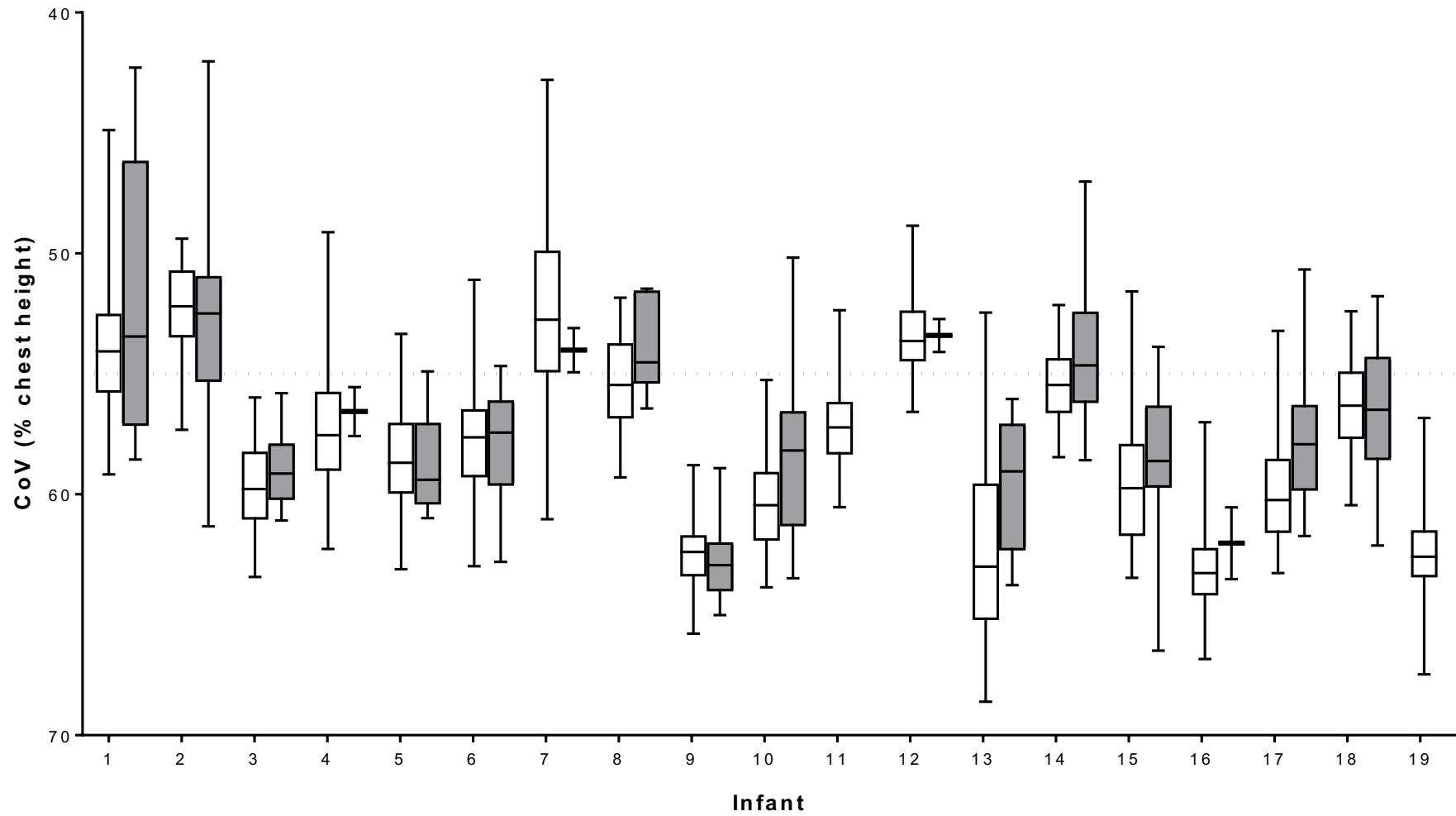
Online Data Supplementary Figure 4. Tidal inflation pressure (PIP-PEEP) for synchronous (white) and asynchronous (grey) inflations by infant. In Infants 11 and 19, all inflations were synchronous. Boxes represent median and interquartile range; error bars minimum to maximum values.



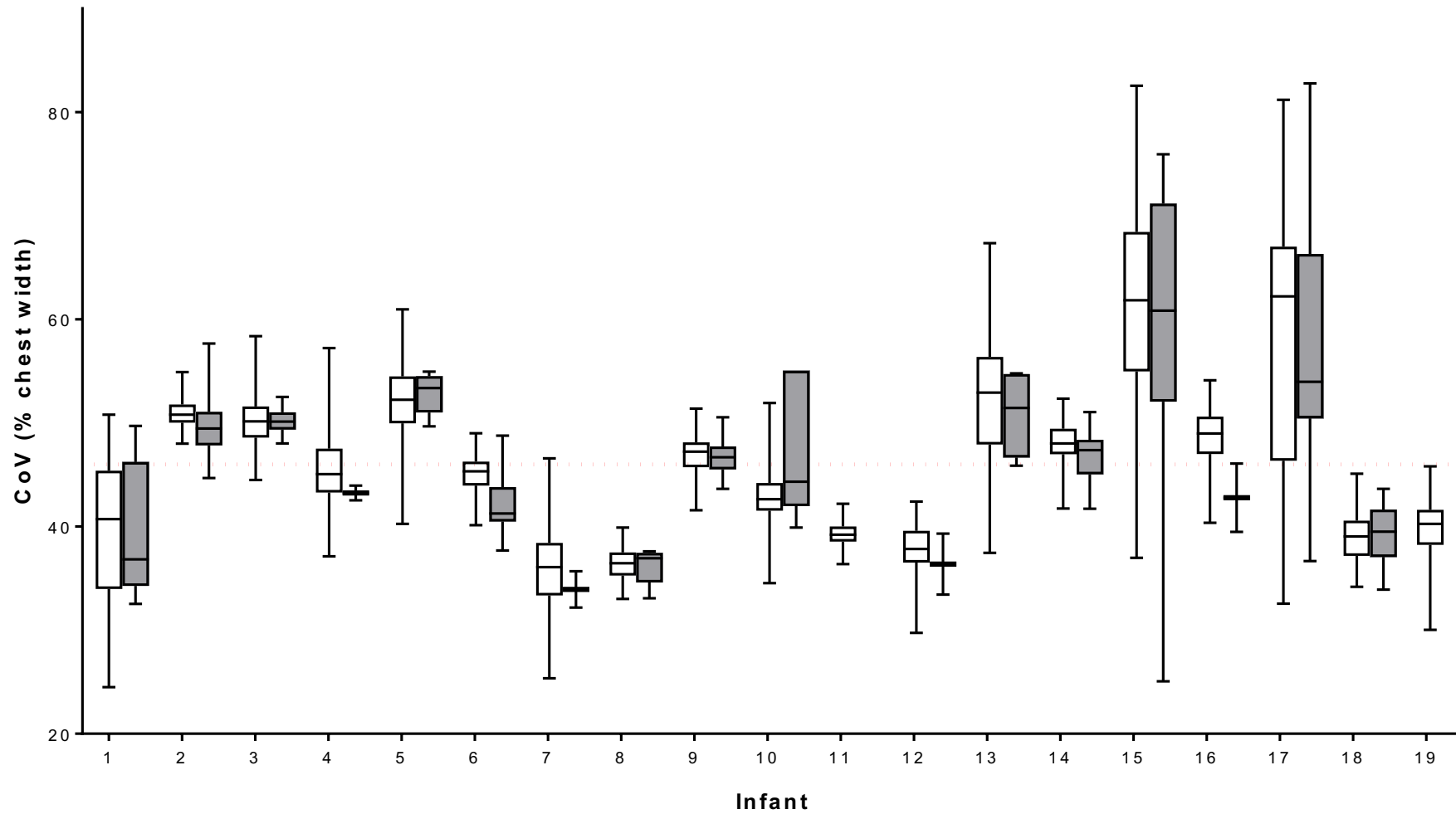
Online Data Supplementary Figure 5. Measured PEEP for synchronous (white) and asynchronous (grey) inflations by infant. In Infants 11 and 19, all inflations were synchronous. Boxes represent median and interquartile range; error bars minimum to maximum values.



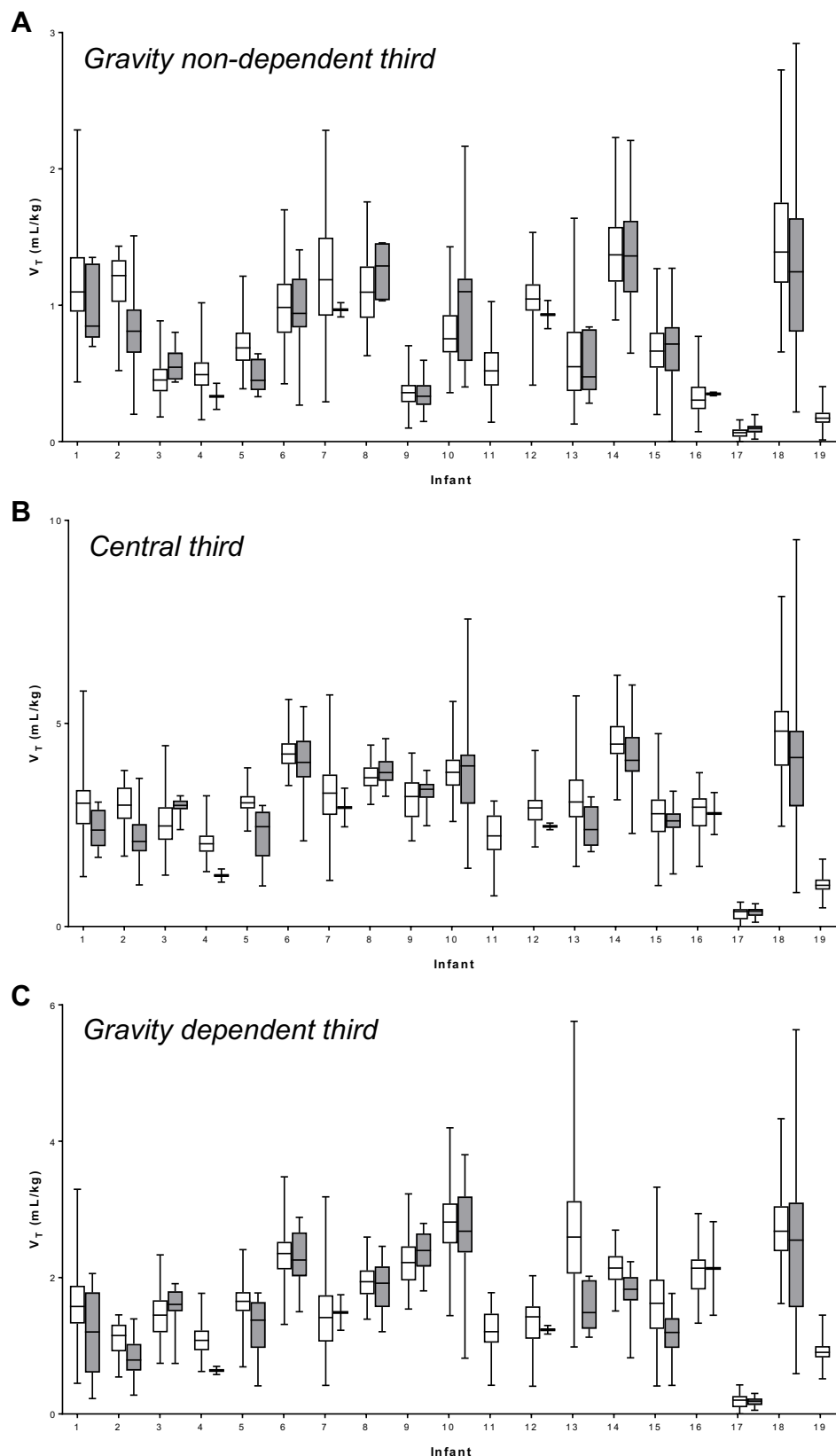
Online Data Supplementary Figure 6. Inspiratory (ventilator delivered) V_T for synchronous (white) and asynchronous (grey) inflations by infant measured at the airway opening. In Infants 11 and 19, all inflations were synchronous. Boxes represent median and interquartile range; error bars minimum to maximum values.



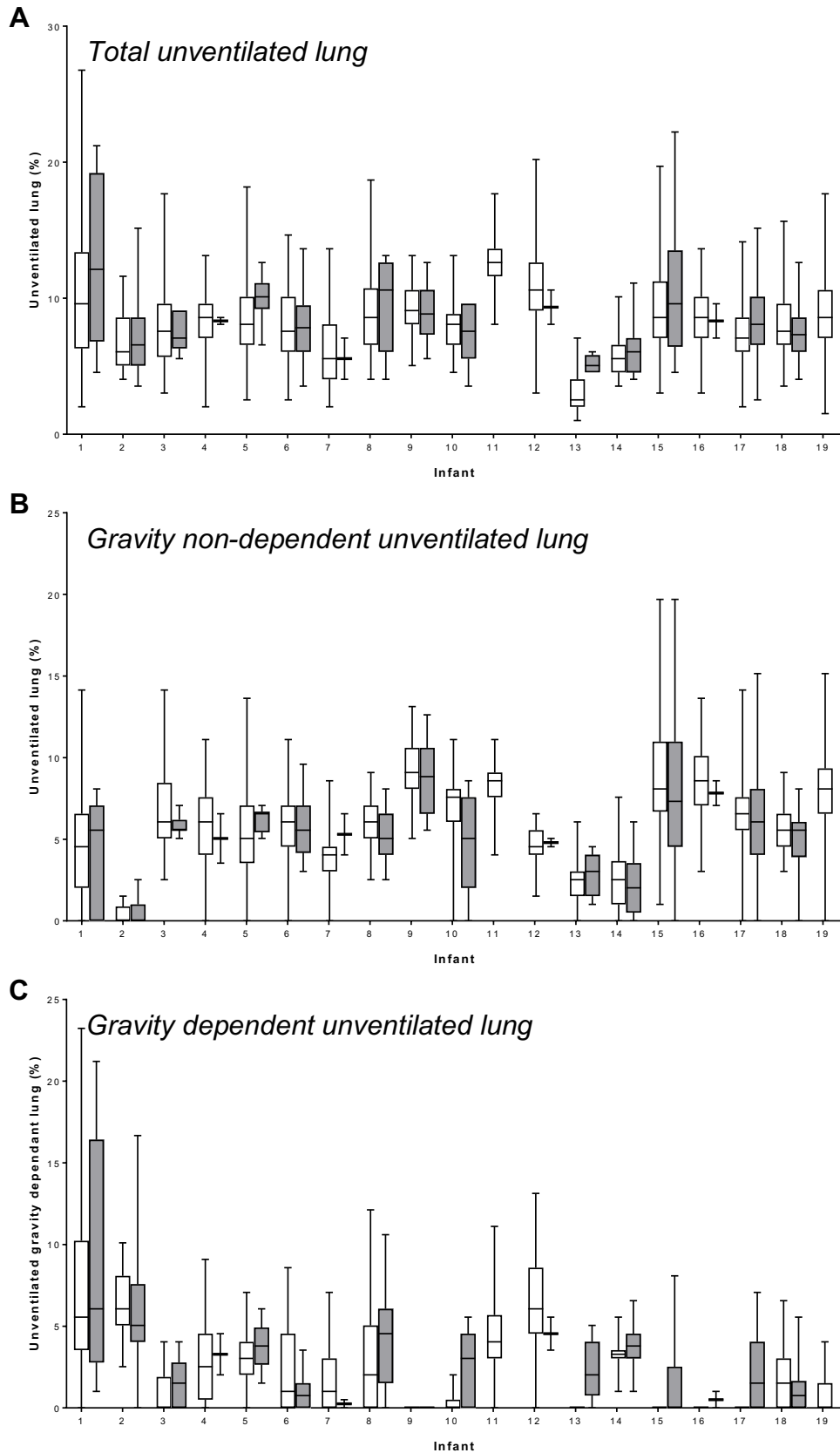
Online Data Supplementary Figure 7. Centre of Ventilation (CoV; %) along the gravity non-dependent to gravity dependent plane (uniform CoV at 55%; blue line) for synchronous (white) and asynchronous (grey) inflations by infant. In Infants 11 and 19, all inflations were synchronous. Boxes represent median and interquartile range; error bars minimum to maximum values.



Online Data Supplementary Figure 8. Centre of Ventilation (CoV; %) along the right to left plane (uniform CoV at 46%; red line) for synchronous (white) and asynchronous (grey) inflations by infant. In Infants 11 and 19, all inflations were synchronous. Boxes represent median and interquartile range; error bars minimum to maximum values.



Online Data Supplementary Figure 9. Distribution of absolute V_T (measured with EIT and calibrated against V_T at airway opening) within the gravity non-dependent (A), central (B) and gravity dependent (C) thirds of the lung for synchronous (white) and asynchronous (grey) inflations by infant. In Infants 11 and 19, all inflations were synchronous. Boxes represent median and interquartile range; error bars minimum to maximum values.



Online Data Supplementary Figure 10. Percentage of unventilated lung tissue for the whole lung (A), gravity non-dependent (B) and gravity dependent hemithorax (C) for synchronous (white) and asynchronous (grey) inflations for each infant. In Infants 11 and 19, all inflations were synchronous. Boxes represent median and interquartile range; error bars minimum to maximum values.