

Appendix

Appendix Table 1: UCA Survey waves and dates

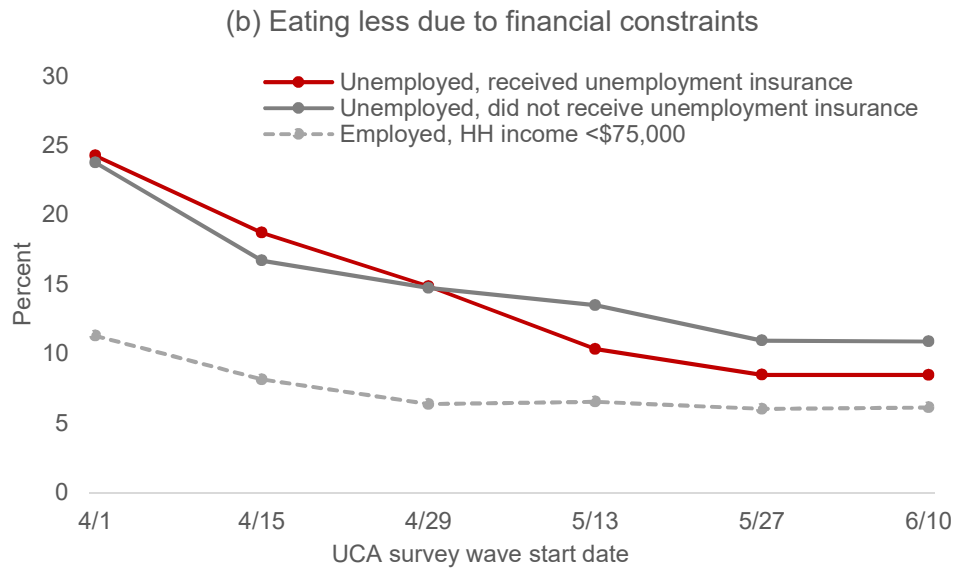
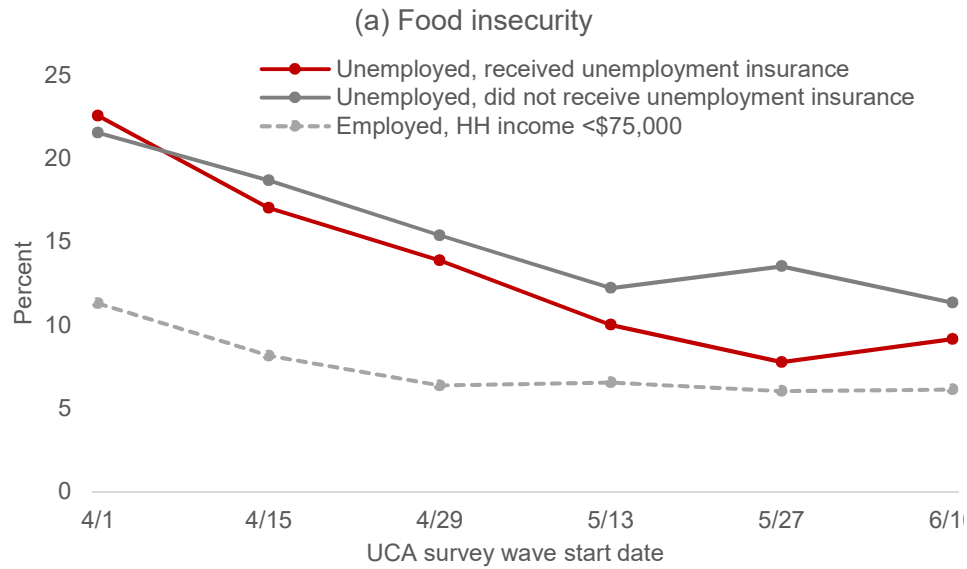
UCA survey wave	Dates
Not included because different sampling strategy and questions	March 10 – March 31
1	April 1 – April 28
2	April 15 – May 12
3	April 29 – May 26
4	May 13 – June 9
5	May 27 – June 23
6	June 10 – July 8

Note: New UCA surveys are fielded every two weeks. Each day one fourteenth of participants are invited to take the survey, and participants have two weeks to take the survey – meaning that the total field period for each wave of the survey is 4 weeks and there is overlap between waves. Participants are incentivized to respond to the survey on the day they are invited to participate.

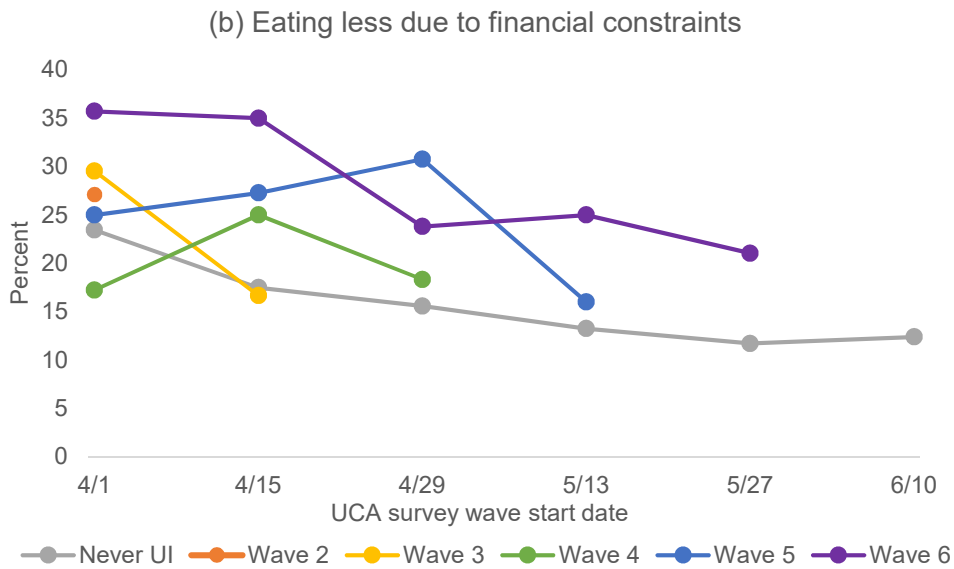
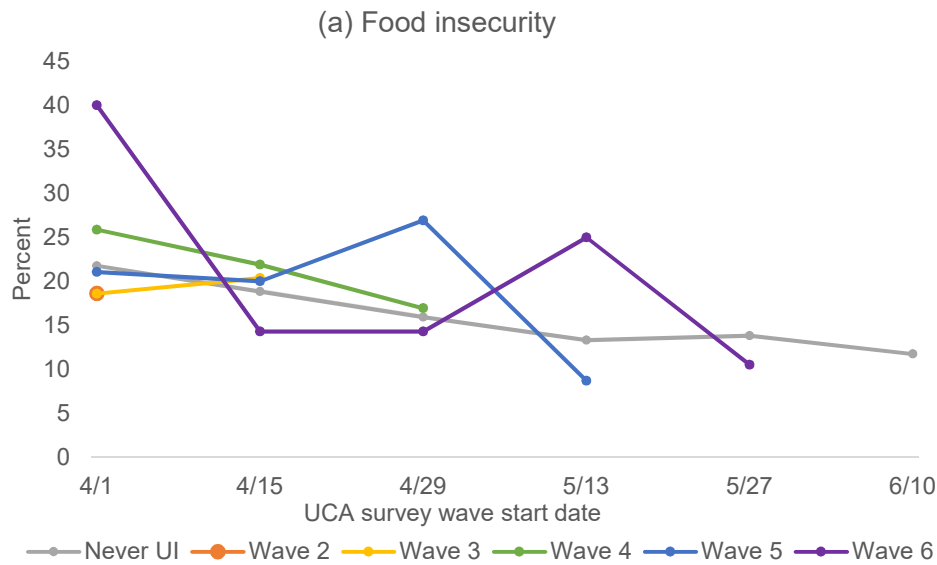
Appendix Table 2: Wave when participants first received unemployment insurance

UCA survey wave	First received unemployment insurance by wave N (%)
Never	544 (61.5)
1	51 (6.0)
2	95 (11.1)
3	67 (7.8)
4	72 (8.4)
5	29 (3.4)
6	24 (2.8)

Appendix Figure A1. Temporal trends in food insecurity and eating less among those who did and did not receive unemployment insurance



Appendix Figure A2. Temporal trends in food insecurity and eating less prior to receiving unemployment insurance by wave when first received unemployment insurance



Notes: There were similar trends in food insecurity and eating less prior to receipt of unemployment insurance among individuals who received unemployment insurance in different waves or who did not receive unemployment insurance by the final wave of the UCA survey included in the study.

Appendix Table 3: Main difference-in-differences estimates of the relationship between unemployment insurance and outcomes of food insecurity and eating less among participants who participated in all 6 survey waves (N=434)

	Food insecurity		Eating less	
	Percentage points	95% CI	Percentage points	95% CI
Unemployment insurance	-4.55	-8.48 - -0.61	-6.94	-11.01 - -2.87
Stimulus payment	0.85	-3.26 - 4.96	-2.11	-6.85 - 2.62
SNAP	-3.81	-11.00 - 3.39	3.34	-3.10 - 9.79
Currently employed	-1.29	-4.13 - 1.56	-3.11	-6.13 - -0.08
Study wave				
Wave 1				
Wave 2	-6.11	-10.20 - -2.02	-5.00	-9.30 - -0.70
Wave 3	-9.00	-13.45 - -4.54	-6.15	-11.14 - -1.15
Wave 4	-10.72	-15.66 - -5.78	-7.56	-12.97 - -2.14
Wave 5	-9.08	-14.13 - -4.04	-8.65	-14.08 - -3.22
Wave 6	-10.28	-15.51 - -5.04	-8.94	-14.39 - -3.49
Constant	19.41	16.51 - 22.31	20.44	17.49 - 23.39

Appendix Table 4: Main difference-in-differences estimates of the relationship between unemployment insurance and outcomes of food insecurity and eating less with survey weights included (N=885)

	Food insecurity		Eating less	
	Percentage points	95% CI	Percentage points	95% CI
Unemployment insurance	-2.83	-6.76 - 1.09	-3.31	-7.35 - 0.73
Stimulus payment	-4.73	-8.49 - -0.97	-2.51	-6.87 - 1.85
SNAP	3.66	-4.09 - 11.40	9.17	-0.13 - 18.47
Currently employed	-2.47	-5.36 - 0.43	-3.01	-6.30 - 0.28
Study wave				
Wave 1				
Wave 2	-4.92	-9.06 - -0.78	-5.44	-9.80 - -1.09
Wave 3	-6.31	-10.79 - -1.82	-8.17	-13.16 - -3.19
Wave 4	-5.86	-10.96 - -0.76	-8.63	-14.38 - -2.88
Wave 5	-5.67	-10.65 - -0.70	-10.57	-16.08 - -5.06
Wave 6	-7.02	-12.04 - -2.01	-10.24	-15.74 - -4.75
Constant	7.90	3.22 - 12.58	7.75	2.14 - 13.35

Appendix Table 5: Main difference-in-differences estimates of the relationship between unemployment insurance and outcomes of food insecurity and eating less based on logistic regression (N=885)

	Food insecurity		Eating less	
	Odds ratio	95% CI	Odds ratio	95% CI
Unemployment insurance	0.54	0.30 - 0.96	0.36	0.19 - 0.66
Stimulus payment	0.63	0.36 - 1.09	0.48	0.27 - 0.84
SNAP	0.96	0.50 - 1.86	1.91	0.95 - 3.86
Currently employed	0.65	0.41 - 1.03	0.45	0.29 - 0.72
Study wave				
Wave 1				
Wave 2	0.64	0.39 - 1.05	0.50	0.30 - 0.83
Wave 3	0.41	0.23 - 0.72	0.34	0.19 - 0.59
Wave 4	0.23	0.13 - 0.43	0.25	0.14 - 0.45
Wave 5	0.25	0.13 - 0.48	0.18	0.10 - 0.33
Wave 6	0.22	0.12 - 0.42	0.18	0.09 - 0.33

Appendix Table 5: Main difference-in-differences estimates of the relationship between unemployment insurance, stimulus payments, SNAP, and outcomes of food insecurity and eating less in very low-income households (<\$20K per year, N=214)

	Food insecurity		Eating less	
	Percentage points	95% CI	Percentage points	95% CI
Unemployment insurance	-8.27	-16.15 - -0.38	-5.28	-15.20 - 4.63
Stimulus payment	-6.50	-14.90 - 1.91	-3.18	-11.88 - 5.51
SNAP	-0.66	-12.92 - 11.61	2.03	-10.11 - 14.17
Currently employed	-3.61	-10.31 - 3.10	-5.59	-12.89 - 1.70
Study wave				
Wave 1				
Wave 2	-7.05	-15.06 - 0.96	-9.62	-16.69 - -2.55
Wave 3	-7.64	-16.57 - 1.29	-16.81	-25.56 - -8.06
Wave 4	-14.49	-24.32 - -4.66	-15.64	-25.04 - -6.24
Wave 5	-14.00	-23.99 - -4.01	-19.88	-29.07 - -10.68
Wave 6	-12.61	-22.29 - -2.93	-20.67	-30.11 - -11.23
Constant	39.12	31.92 - 46.32	41.80	35.52 - 48.09