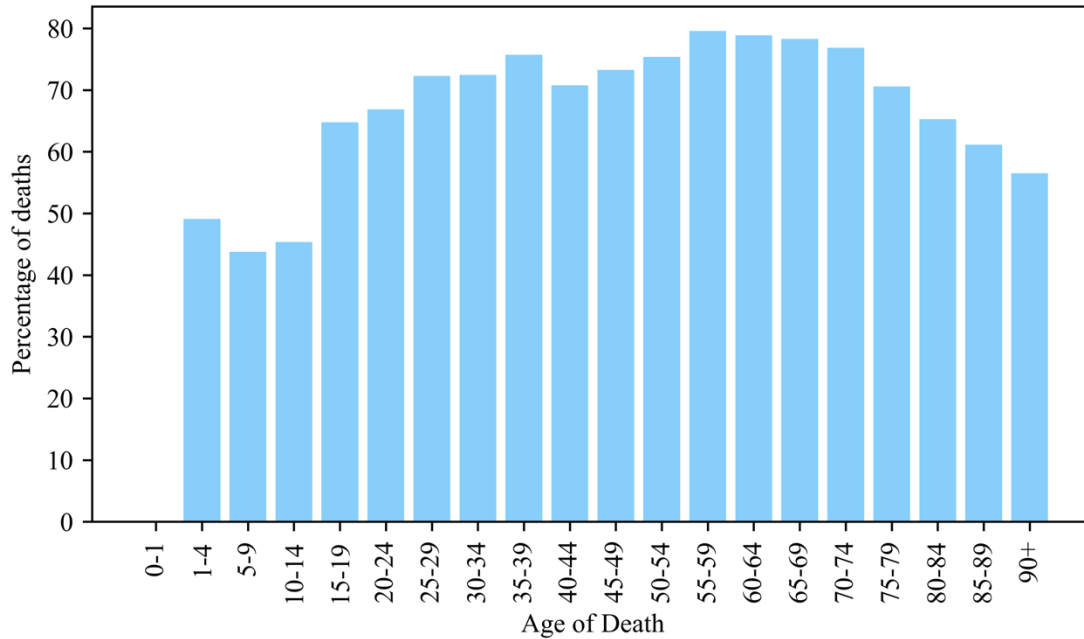


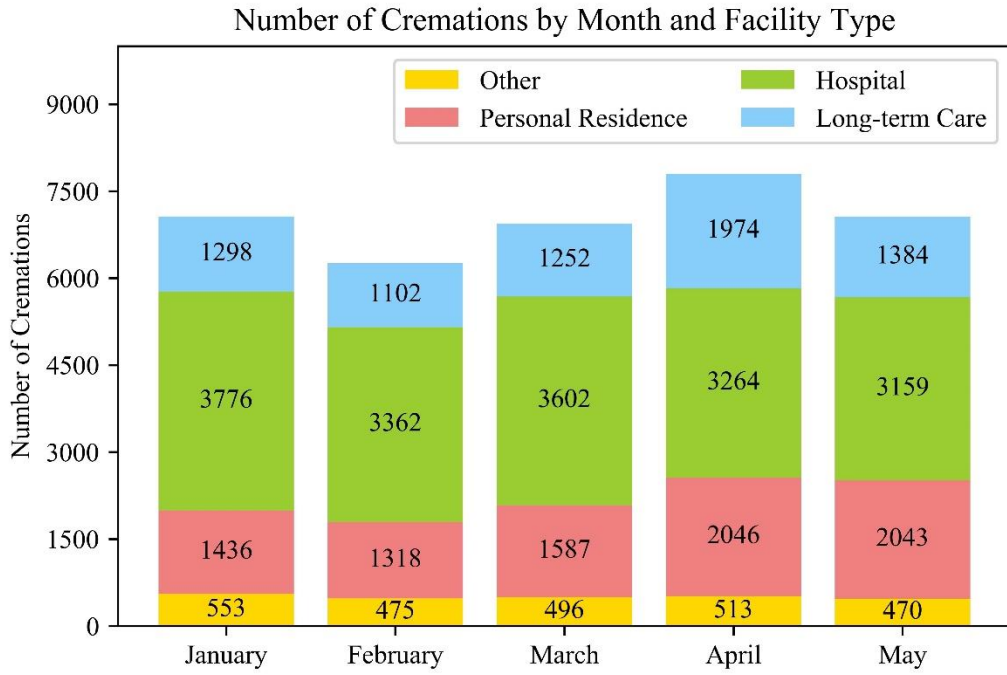
## Supplementary Information

Supplement Figure 1 Percentage of deaths cremated by Age for Ontario in 2017-2029. The values were calculated using Statistics Canada's 2017-2018 age stratified mortality.



For 2017 and 2018, their respective years were used to create the percentage of cremation by age. For 2019, the average number of deaths for each age group was used to create the age stratified mortality

Supplement Figure 2: Distribution of number of creations by setting in 2020



Supplement Figure 3: Monthly cremation by facility compared to averages for 2017-2019

