

Supplementary Material

Forecasting COVID-19 and Analyzing the Effect of Government Interventions

Michael Lingzhi Li^a, Hamza Tazi Bouardi^a, Omar Skali Lami^a, Thomas A. Trikalinos^c, Nikolaos K. Trichakis^{a,b}, Dimitris Bertsimas^{*a,b}

^aOperations Research Center, Massachusetts Institute of Technology, Cambridge, MA 02139

^bSloan School of Management, Massachusetts Institute of Technology, Cambridge, MA 02142

^cCenter for Evidence Synthesis in Health, Brown University, Providence, RI 02912

1. Mathematical Formulation of the DELPHI Model

Recall that the DELPHI model is a compartment epidemiological model that extends the classic SEIR model into 11 states under the following 8 groups:

- **Susceptible (S):** People who have not been infected.
- **Exposed (E):** People currently infected, but not contagious and within the incubation period.
- **Infected (I):** People currently infected and contagious.
- **Undetected (U_R) & (U_D):** People infected and self-quarantined due to the effects of the disease, but not confirmed due to lack of testing. Some of these people recover (U_R) and some deacease (U_D).
- **Detected, Hospitalized (DH_R) & (DH_D):** People who are infected, confirmed, and hospitalized. Some of these people recover (DH_R) and some deacease (DH_D).
- **Detected, Quarantine (DQ_R) & (DQ_D):** People who are infected, confirmed, and home-quarantined rather than hospitalized. Some of these people recover (DQ_R) and some deacease (DQ_D).
- **Recovered (R):** People who have recovered from the disease (and assumed to be immune).
- **Deceased (D):** People who have perished from the disease.

In addition to main functional states, we introduce auxiliary states to calculate a few useful quantities: Total Hospitalized (TH), Total Detected deaths (DD) and Total Detected Cases (DT).

*Corresponding author, dbertsim@mit.edu. M.L.L, H.T.B, O.S.L, T.A.T, N.K.T, D.B designed the study, M.L.L, H.T.B, O.S.L acquired data, carried out analysis and formulated the results. M.L.L, H.T.B, O.S.L, T.A.T, N.K.T, D.B wrote the manuscript.

The full mathematical formulation of the model is as follows:

$$\frac{dS}{dt} = -\tilde{\alpha}\gamma(t)S(t)I(t) \quad (1)$$

$$\frac{dE}{dt} = \tilde{\alpha}\gamma(t)S(t)I(t) - \beta E(t) \quad (2)$$

$$\frac{dI}{dt} = \beta E(t) - r_d I(t) \quad (3)$$

$$\frac{dU_R}{dt} = r_d(1 - \tilde{\mu})(1 - p_d)I(t) - \sigma U_R(t) \quad (4)$$

$$\frac{dDH_R}{dt} = r_d(1 - \tilde{\mu})p_d p_h I(t) - \kappa DH_R(t) \quad (5)$$

$$\frac{dDQ_R}{dt} = r_d(1 - \tilde{\mu})p_d(1 - p_h)I(t) - \sigma DQ_R(t) \quad (6)$$

$$\frac{dU_D}{dt} = r_d \tilde{\mu}(1 - p_d)I(t) - \tilde{\tau} U_D(t) \quad (7)$$

$$\frac{dDH_D}{dt} = r_d \tilde{\mu} p_d p_h I(t) - \tilde{\tau} DH_D(t) \quad (8)$$

$$\frac{dDQ_D}{dt} = r_d \tilde{\mu} p_d(1 - p_h)I(t) - \tilde{\tau} DQ_D(t) \quad (9)$$

$$\frac{dTH}{dt} = r_d p_d p_h I(t) \quad (10)$$

$$\frac{dDD}{dt} = \tilde{\tau}(DH_D(t) + DQ_D(t)) \quad (11)$$

$$\frac{dDT}{dt} = r_d p_d I(t) \quad (12)$$

$$\frac{dR}{dt} = \sigma(U_R(t) + DQ_R(t)) + \kappa DH_R(t) \quad (13)$$

$$\frac{dD}{dt} = \tilde{\tau}(U_D(t) + DQ_D(t) + DH_D(t)) \quad (14)$$

19 Where:

- 20 • $\tilde{\alpha}$ is the baseline infection rate.
 21 • $\gamma(t)$ measures the government response and is defined as:

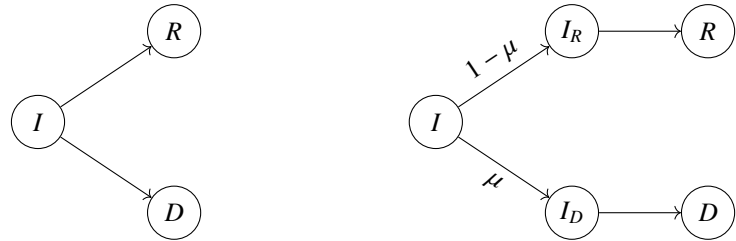
$$\gamma(t) = \frac{2}{\pi} \arctan\left(\frac{-(t - \tilde{t}_0)}{\tilde{k}}\right) + 1,$$

22 where the parameters \tilde{t}_0 and \tilde{k} capture, respectively, the start date and the strength of the
 23 response.

- 24 • r_d is the rate of detection. This equals to $\frac{\log 2}{T_d}$, where T_d is the median time to detection
 25 (assumed to be 2 days).
 26 • β is the rate of infection leaving incubation phase. This equals to $\frac{\log 2}{T_\beta}$, where T_β is the
 27 median time to leave incubation (assumed to be 5 days).
 28 • σ is the rate of recovery not under hospitalization. This equals to $\frac{\log 2}{T_\sigma}$, where T_σ is the
 29 median time to recovery when a patient is not under hospitalization (assumed to be 10
 30 days).

- 31 • κ is the rate of recovery under hospitalization. This equals to $\frac{\log 2}{T_\kappa}$, where T_κ is the median
32 time to recovery under hospitalization (assumed to be 15 days).
 - 33 • $\tilde{\tau}$ is the rate of death.
 - 34 • $\tilde{\mu}$ is the mortality rate.
 - 35 • p_d is the percentage of infection cases detected. This percentage is constant and is set to
36 20%.
 - 37 • p_h is the percentage of detected cases hospitalized. This percentage is also constant and
38 set to 15%.
- 39 Therefore, we fit on 5 parameters from the list above $(\tilde{\alpha}, \tilde{\mu}, \tilde{\tau}, \tilde{t}_0, \tilde{k})$. In addition, we create two
40 additional parameters \tilde{k}_1, \tilde{k}_2 to account for the unknown initial population in the infected (I)
41 and exposed (E) states. We thus fit seven parameters per area.

42 **2. Induced Dependence from Recovery and Death Modeling**



(a) Standard Modeling for Recoveries and Deaths

(b) Updated Modeling for Recoveries and Deaths

Figure 1: Modeling Recoveries and Deaths

43 Assume that recoveries and deaths are modeled as shown in Figure 1a. Then the outflow
 44 from the I state, denoted I^- , can be written as followed:

$$\frac{dI^-}{dt} = -(\nu + \tau)I$$

45 Where ν is the rate of recovery and τ is the rate of death. This state dependent model implies a
 46 mortality rate of $\frac{\nu}{\nu + \tau}$, which is fixed given the rate of recovery and the rate of death. However,
 47 in reality, the mortality rate should be independent from how fast people recover or die.

48 **3. Illustration of Different Phases of Modeling Governmental Response**

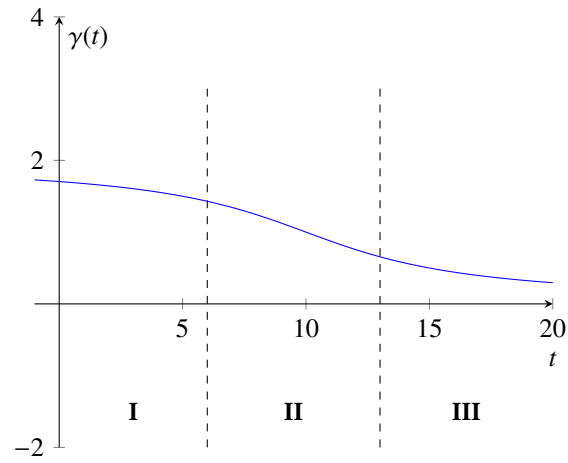


Figure 2: Illustration of $\gamma(t) = \frac{2}{\pi} \arctan\left(-\frac{t-10}{5}\right) + 1$ (i.e., $\tilde{t}_0 = 10$ and $\tilde{k} = 5$).

49 **4. Detailed Forecasting Results for the World**

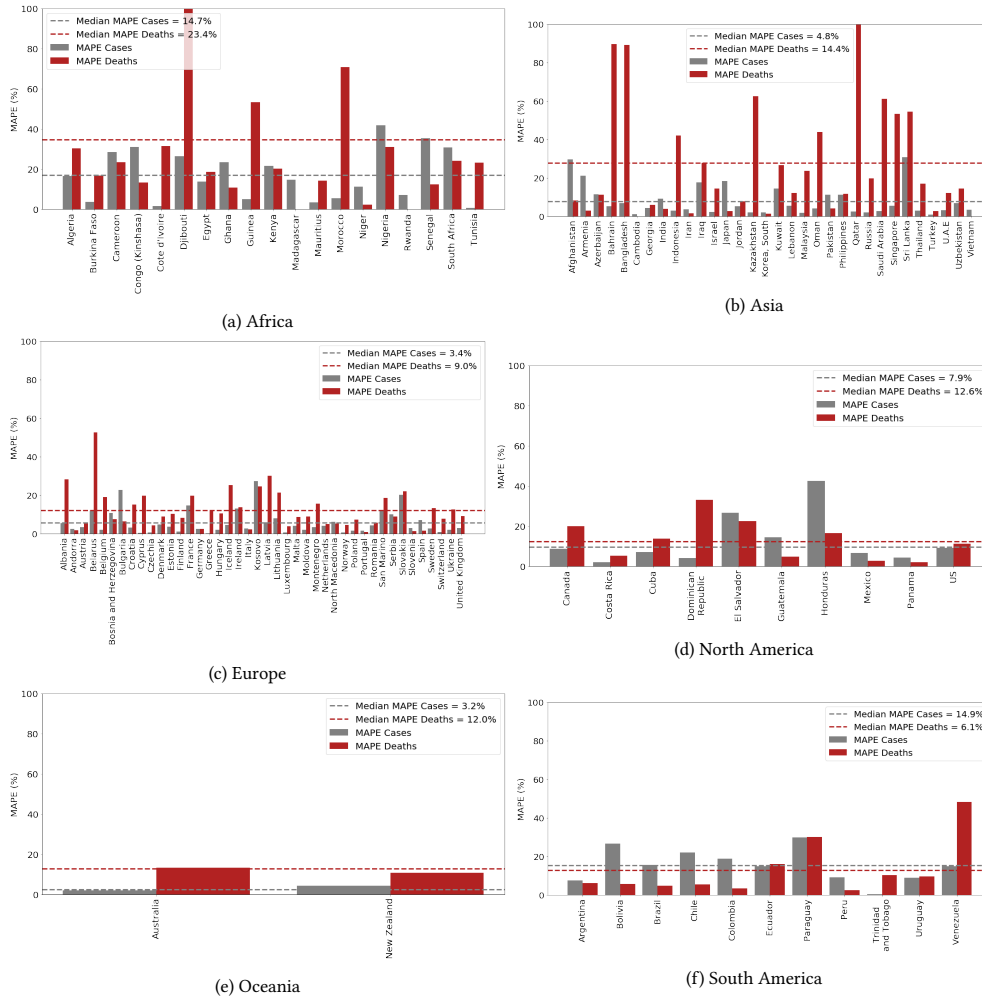


Figure 3: Mean Absolute Percentage Error (MAPE) of the predicted number of cases and decreases in each country (projections made using data up to 04/27 for the period from 04/28 to 05/12).

50 **5. Examples of Areas with large MAPE**

Table 1: Breakdown of number of deaths vs. MAPE on deaths for large errors.

Country/Province	Bahrain	Djibouti	Guinea	Kazakhstan	Sri Lanka	Oman	Qatar	Venezuela
Number of deaths as of May 11 2020	8	3	11	32	9	17	14	10
MAPE on deaths	89.6%	193.1%	53.3%	62.6%	54.5%	44.0%	106.9%	48.1%

51 **6. Correspondence between Policy Data and Categorized Policies**

Oxford Policy	Categorized Policy
C3: Cancel Public Events C4: Restrictions on gatherings C5: Close public transport	Restrict Mass Gatherings
C2: Workplace closing C7: Restrictions on internal movement C8: International travel controls	Travel and Work Restrictions
C1: School closing	School Restrictions
C6: Stay at home requirements	Stay-at-Home Order

Table 2: Correspondence between Oxford Policy Data and Categorized Policies.

IHME Policy	Categorized Policy
Mass Gathering Restrictions	Restrict Mass Gatherings
Business Closure Non-essential Businesses Closed Travel Severely Limited	Travel and Work Restrictions
Educational Facilities Closed	School Restrictions
Stay-at-Home Order	Stay-at-Home Order

Table 3: Correspondence between IHME Policy Data and Categorized Policies.

52 **7. Additional Results for Reopening Strategies**

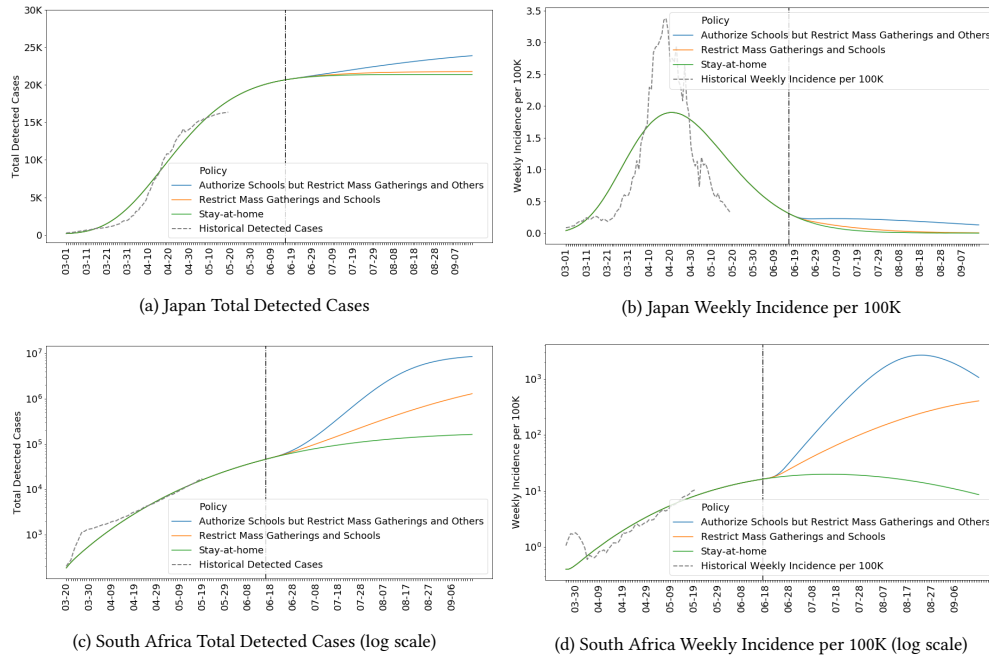


Figure 4: Forecasts of total detected cases and weekly incidence per 100K for Japan and South Africa under various policies