

Supplementary information: Global years of life lost to COVID-19

Héctor Pifarré i Arolas,^{1*} Enrique Acosta,² Guillem López Casasnovas¹,
Adeline Lo³, Catia Nicodemo⁴, Tim Riffe², & Mikko Myrskylä^{2,5}

¹Centre for Research in Health Economics, Universitat Pompeu Fabra

²Max Planck Institute for Demographic Research

³Department of Political Science, University of Wisconsin-Madison

⁴Centre of Organisation, Department of Primary Economics, University of Oxford

⁵Department of Social Statistics, University of Helsinki

*To whom correspondence should be addressed; E-mail: hector.pifarre@upf.edu.

June 19, 2020

This PDF file includes:

- Materials and Methods
- Figs S1 to S11
- Tables S1 to S7

Materials and Methods

Population data are drawn from the Human Mortality Database (*12*) and the World Population Prospects (*13*). Country life expectancies are computed from life tables World Population Prospects from the period 2015-2020. The country death counts by age and gender due to COVID-19 come from the COVerAge-DB (*1*). Table S1 reports the dates at which data are collected, and death counts by country. Projections for total number of deaths due to COVID-19 by country are from the Imperial College (*2*). Death counts due to other causes of mortality are from data in Global Burden of Disease (*3*). Finally, we use weekly excess mortality data from the Human Mortality Database (*12*).

Calculation of years of life lost (YLL)

To measure the impact of COVID-19 in terms of premature mortality, in the outbreak spanning January 2020 to May 2020, we calculate the years of life lost (YLL) for a person who dies at a given age due to COVID-19 as the difference between their age at death and their life expectancy at that given age (14).

The age specific life expectancy is extracted from the country-specific life tables in WPP. This approach differs slightly from existing YLL exercises such as the GBD study (4) which uses a single best-practices life table to measure life expectancy countries. Here country-specific tables are more applicable under the premise that the focus of the study is not of trends, but rather in evaluating the magnitude of the premature mortality impacts of COVID-19 at this time. For the same reason, we additionally compute YLL rates per 100,000 people based on country specific population, instead of the more common route of utilizing a standard population. In this setting, our YLL rates do not disentangle the effects of country-specific age structures

Comparisons with other causes of mortality

For heart conditions (cardiovascular diseases) and traffic accidents (transport injuries), we use mortality data collected from the GBD (3) in 2017 (cause IDs 491 and 688 respectively on the database). There is substantial variation in the mortality burden of the flu by country across years. To better illustrate the context, we calculate YLL rates for the worst flu and median flu years for each country in the period 1990-2017. We select years according to the YLL rates following our approach described above.

Selection of Respiratory infections and Pneumonia and Influenza as causes of death

The identification of influenza mortality is challenging because influenza tests are rarely performed, and substantial influenza-related mortality is the consequence of exacerbation of preexisting medical conditions. Therefore, most of the deaths from influenza are classified within other causes, such as respiratory and cardiovascular diseases. Usually, the estimation of influenza mortality is done by applying a Serfing model to monthly or weekly mortality to broader groups of causes of death, ideally including influenza surveillance information (15). Nevertheless, for most of the countries under analysis, influenza epidemics severity had considerable differences and the detailed information for obtaining direct measures of mortality from influenza by age is not available. For comparability reasons, we selected all-cause mortality involving pneumococcal pneumonia, H influenzae type B, and influenza as etiology from the GDB data (3) (cause IDs 188, 189, and 187 respectively on the databases).

Excess mortality

We compute excess deaths for 9 countries with available weekly mortality data. A mortality baseline is estimated for each country, sex and age group by fitting a Poisson model to weekly all-cause mortality since the first week of 2014. Mortality excess here is defined as the difference between observed mortality and the baseline. For the calculation of excess mortality attributable to COVID-19, we compute the cumulative positive excess mortality since the last week of February 2020. This is then compared to official death counts for COVID-10 around comparable dates.

The model has three main components: a sinusoidal component accounting for annual seasonality, a nonlinear trend component using 3-knots splines accounting for secular changes in mortality, and an offset controlling for changes in the exposure over time. In each case, the inclusion of the seasonal component is decided by selecting the model with the best AIC value (16).

Mortality excess is defined as the observed mortality minus the baseline. We compute bootstrapped 95% prediction intervals of the excess mortality (2000 iterations). For the calculation of excess mortality attributable to COVID-19, we calculate the cumulative positive excess mortality since the last week of February 2020. Results are reported in Table S3. As noted by the HMD, the mortality counts during the most recent weeks is incomplete due to delayed registration of deaths (13).

Projections

It is inherently difficult to extricate these measures from the policy contexts in which they are calculated. Are certain countries experiencing lower YLL than others due to more rigid policy measures (e.g. stay-at-home orders, mask enforcement)? To attain some sense of policy context, we take projections of the number of COVID-19 deaths in 2020 under a policy scenario of no intervention, with different disease transmission (so-called R_0) rates (2) and produce similar calculations of years of life lost.¹ The results of this exercises are shown in Table S3.

Gender imbalances

Table S4 reports key figures behind the gender disparity in the impact of COVID-19, by country: 1) a higher average age-at-death of female COVID-19 deaths, resulting in a relatively lower YLL per death (14.95 and 13.46 for males and females respectively); and 2) more male deaths than female deaths in absolute number.

¹The data used is obtained from the original report behind the publication and is retrieved from: <https://www.imperial.ac.uk/media/imperial-college/medicine/sph/ide/gida-fellowships/Imperial-College-COVID19-Global-unmitigated-mitigated-suppression-scenarios.xlsx>.

In order to provide a policy relevant magnitude of the gender imbalance, we calculate the reduction in male death counts needed for perfect parity. We hold differential age pattern of death across genders constant and reduce male death counts up to the point in which YLL rates are equal across genders. The resulting death counts reductions are presented in Table S5 in terms of the ratio of equalizing to current death counts.

Figures S1 to S11

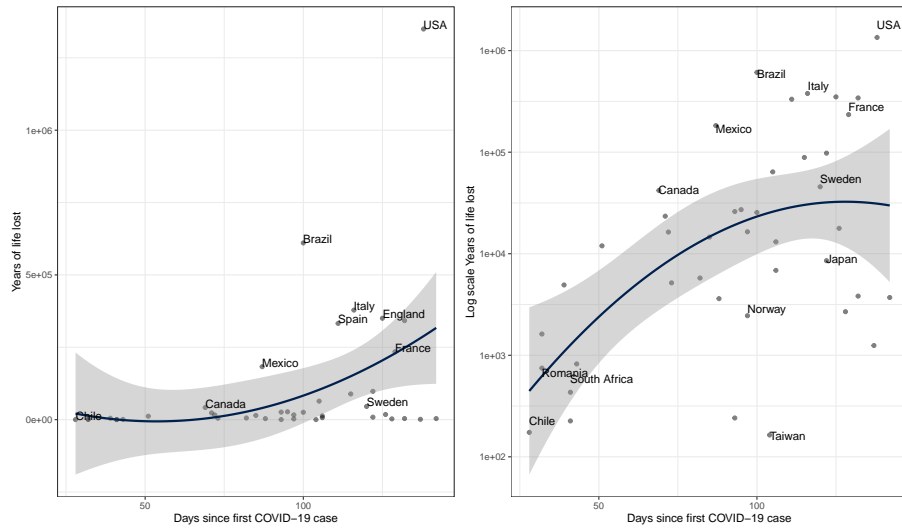


Figure S1: Growth of years of life lost with increase of days from first COVID-19 case. Left panel plots days of first case against years of life lost, while right panel plots days of first case against log scale years or life lost. Polynomial order 2 curve fit against data.

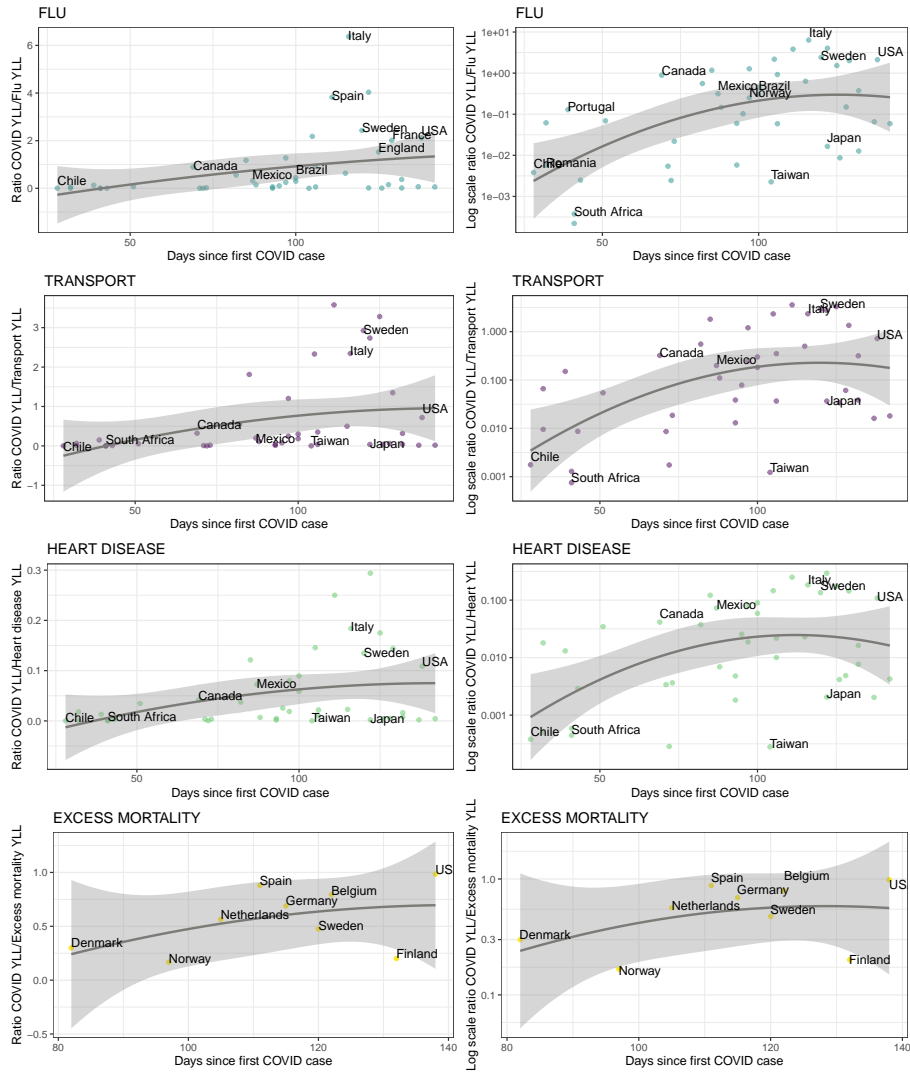


Figure S2: Ratio COVID-19 YLL over other causes of mortality YLL, graphed against increase of days from first COVID-19 case. Left column plots days of first case against ratio, while right panel plots days of first case against log scale ratio. Flu year used is median impact flu year for each country. Polynomial order 2 curve fit against data.

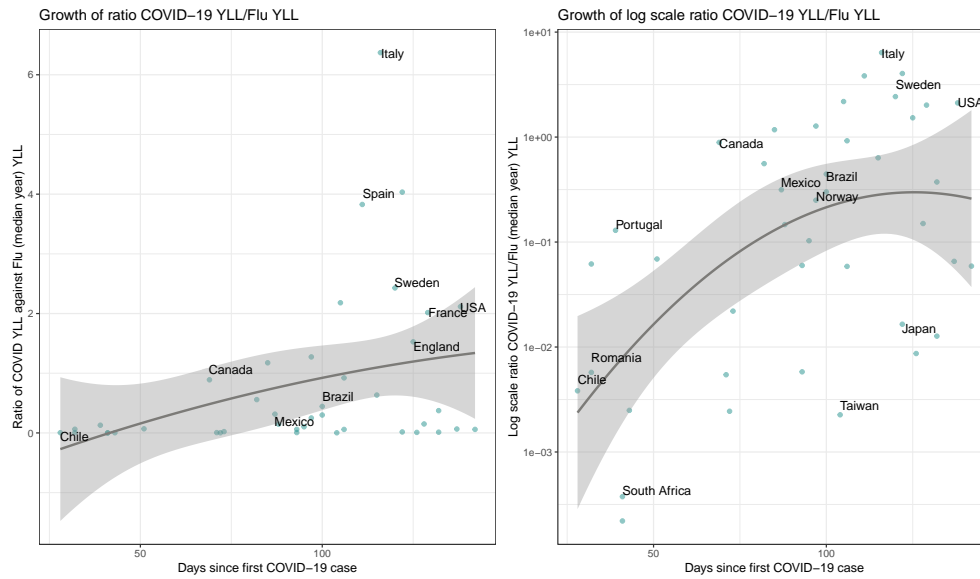


Figure S3: Ratio COVID-19 YLL over flu mortality YLL, graphed against increase of days from first COVID-19 case. Left plots days of first case against ratio, while right plots days of first case against log scale ratio. Flu year used is median impact flu year for each country. Polynomial order 2 curve fit against data.

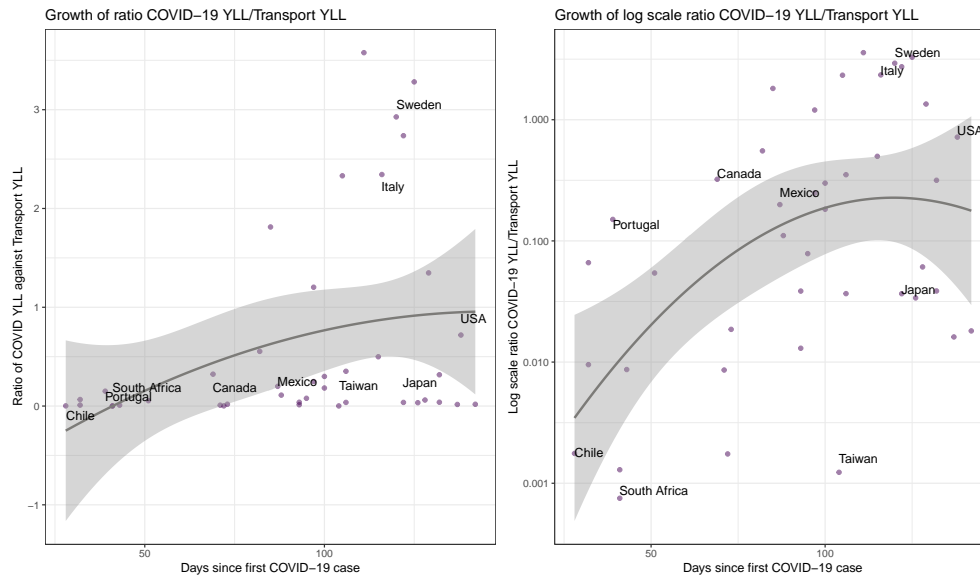


Figure S4: Ratio COVID-19 YLL over transport mortality YLL, graphed against increase of days from first COVID-19 case. Left plots days of first case against ratio, while right plots days of first case against log scale ratio. Polynomial order 2 curve fit against data.

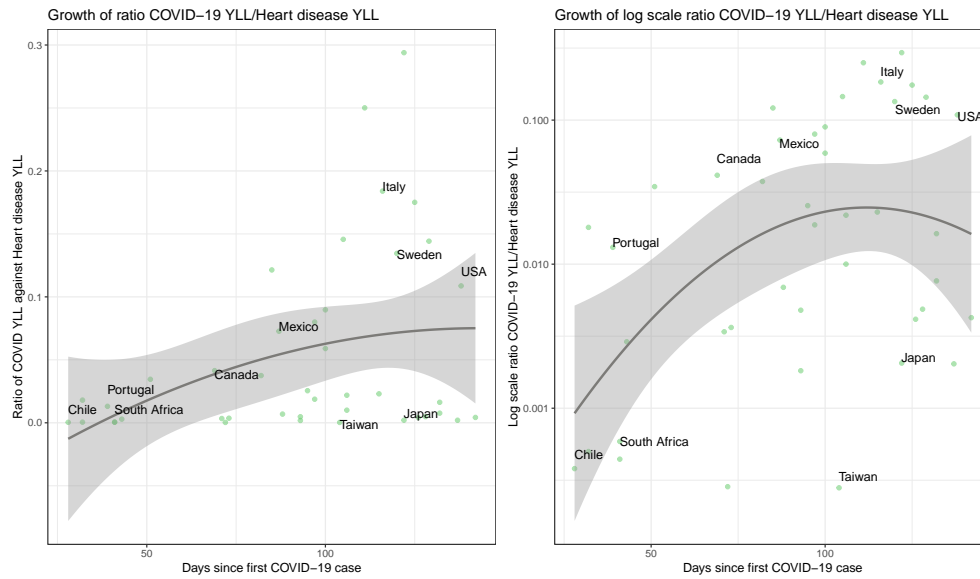


Figure S5: Ratio COVID-19 YLL over heart disease YLL, graphed against increase of days from first COVID-19 case. Left plots days of first case against ratio, while right plots days of first case against log scale ratio. Polynomial order 2 curve fit against data.

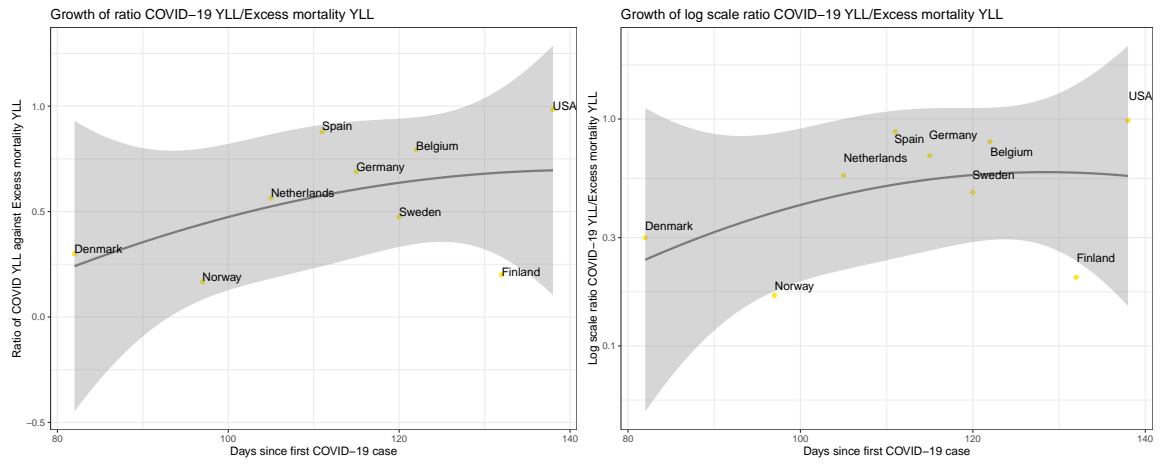


Figure S6: Ratio COVID-19 YLL over excess mortality YLL, graphed against increase of days from first COVID-19 case. Left plots days of first case against ratio, while right plots days of first case against log scale ratio. Polynomial order 2 curve fit against data.

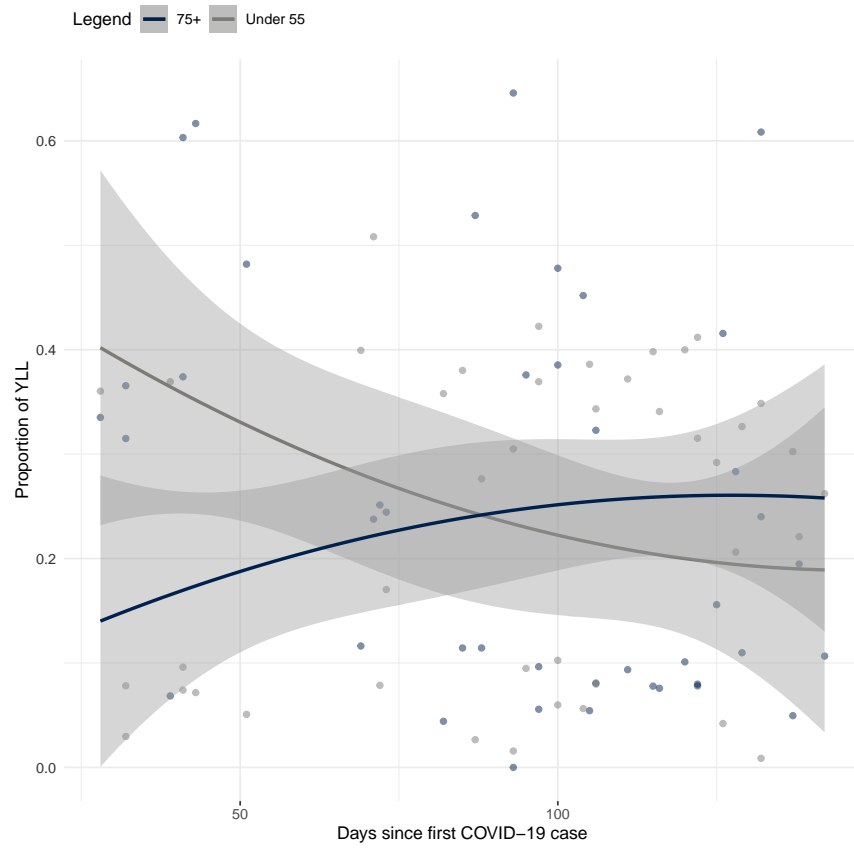


Figure S7: Proportion of YLL from two age groups as days from first COVID-19 case increases. Polynomial order 2 curve fit against data.

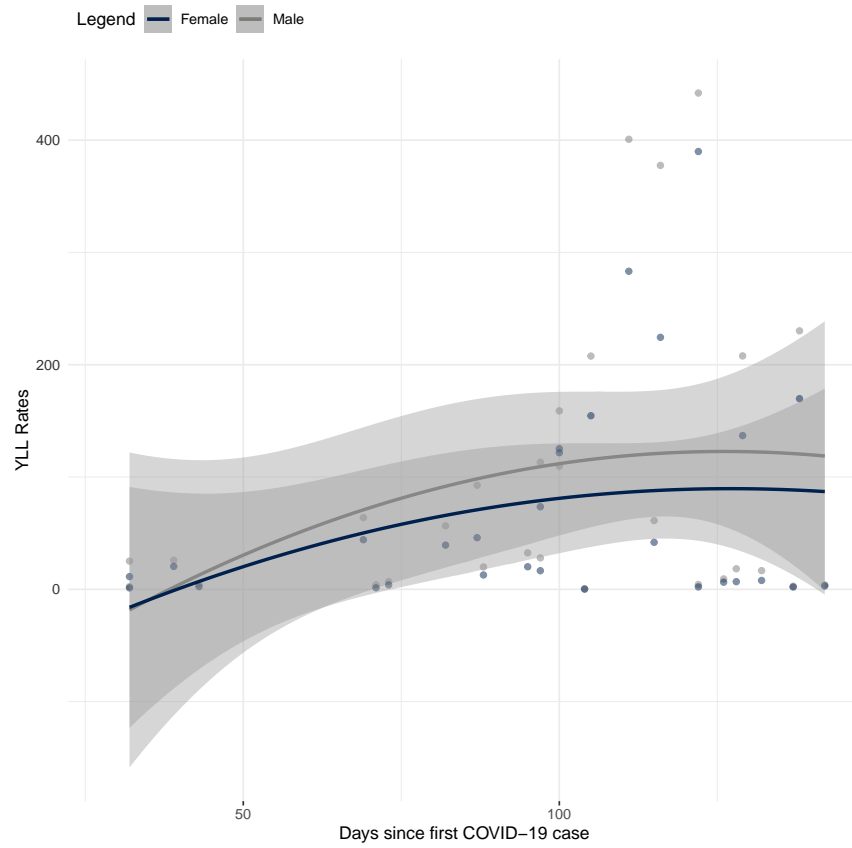


Figure S8: YLL rates from male and female subgroups as days from first COVID-19 case increases. Polynomial order 2 curve fit against data.

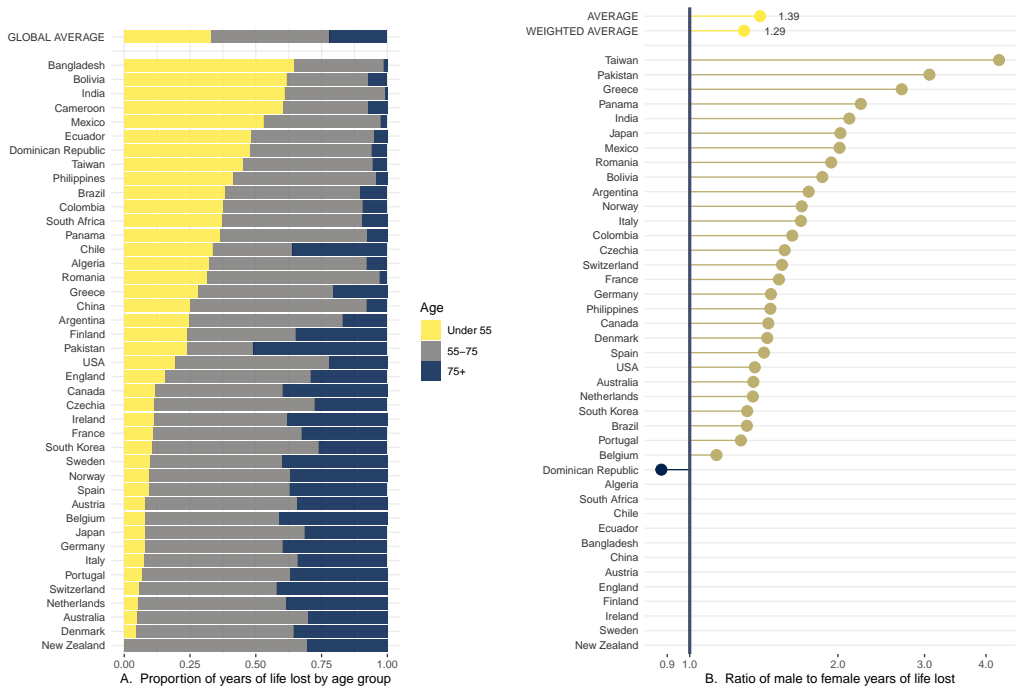


Figure S9: Replication of Figure 2 from main manuscript, with ratio of male YLL rates over female YLL rates on log x-axis scale.

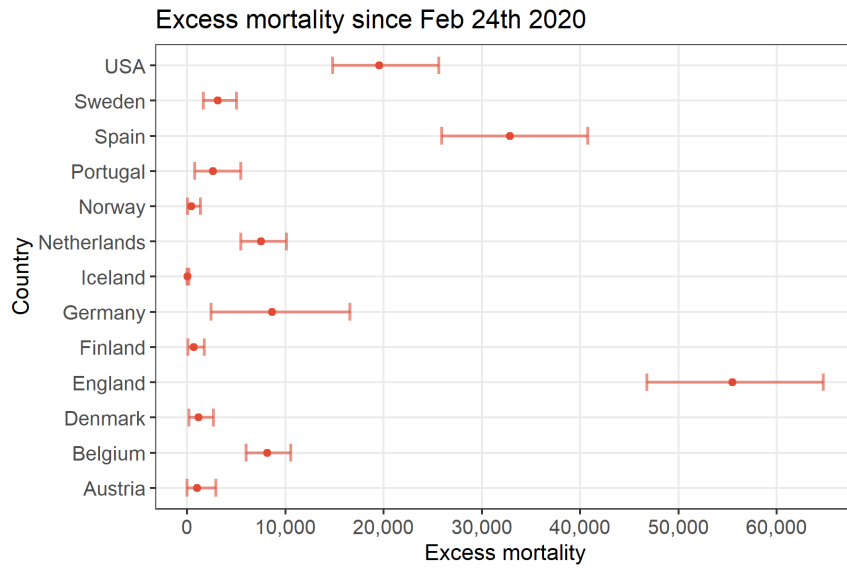


Figure S10: Excess mortality and its 95% prediction interval by country, for all ages and both sexes. Excess mortality is defined as the difference between the observed and predicted mortality baseline, between February 24, 2020 and the last week in which mortality was observed in each country.

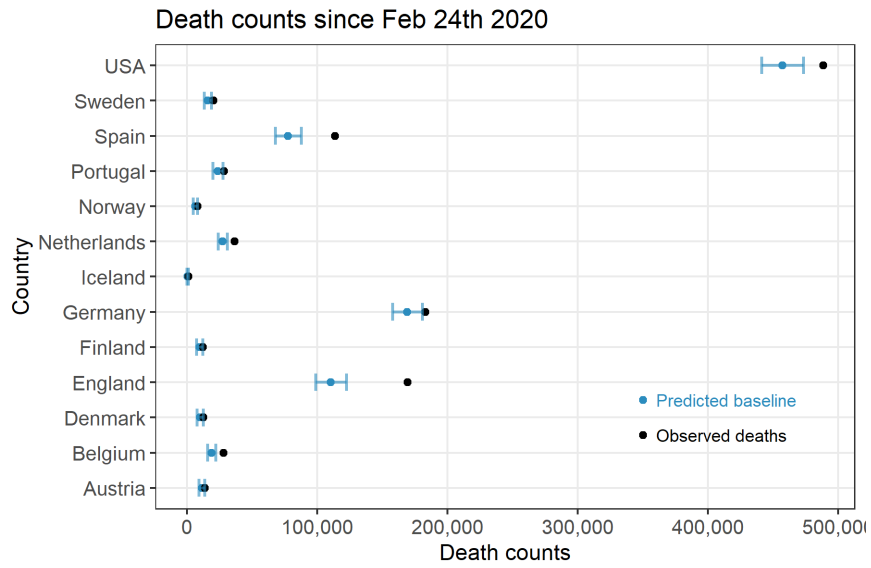


Figure S11: Total observed (in black) and predicted mortality baseline with 95% prediction interval (in blue), for all ages and both sexes, between February 24, 2020 and the last week of observation in each country.

Tables S1 to S7

Country	Date	Both	Males	Females
Algeria	2020-06-10	732		
Argentina	2020-05-15	356	213	143
Australia	2020-06-10	102	57	45
Austria	2020-06-10	646		
Bangladesh	2020-06-09	1,012		
Belgium	2020-06-05	9,600	4,852	4,748
Bolivia	2020-04-22	34	23	11
Brazil	2020-06-04	31,502	18,258	13,244
Cameroon	2020-04-16	18	16	2
Canada	2020-05-04	3,765	2,150	1,615
Chile	2020-03-31	12		
China	2020-02-11	1,023		
Colombia	2020-06-09	1,366	833	533
Czechia	2020-05-28	320	186	134
Denmark	2020-05-19	551	314	236
Dominican Republic	2020-06-09	1,100	550	550
Ecuador	2020-04-20	507		
England	2020-06-04	27,283		
Finland	2020-06-09	324		
France	2020-06-01	18,539	10,972	7,567
Germany	2020-05-19	8,090	4,488	3,602
Greece	2020-06-02	179	125	54
India	2020-06-10	14,688	9,792	4,896
Ireland	2020-05-24	1,343		
Italy	2020-05-26	31,676	18,747	12,929
Japan	2020-05-17	624	399	225
Mexico	2020-05-25	7,633	5,161	2,472
Netherlands	2020-06-11	6,042	3,328	2,714
New Zealand	2020-05-31	22		
Norway	2020-06-02	237	129	108
Pakistan	2020-05-07	1,188	452	142
Panama	2020-04-10	74	49	25
Philippines	2020-06-04	909	582	327
Portugal	2020-04-10	470	252	218
Romania	2020-03-29	43	28	15
South Africa	2020-04-15	34		
South Korea	2020-06-10	276	148	128
Spain	2020-05-21	28,628	16,182	12,445
Sweden	2020-05-30	4,395		
Switzerland	2020-06-01	1,657	954	703
Taiwan	2020-05-04	7	6	1
USA	2020-06-06	94,371	50,905	43,466

Table S1: COVID-19 attributed deaths by date, country, and gender.

Country	Date	Excess deaths	COVID-19 deaths
Belgium	2020-04-20	8,002	6,539
Denmark	2020-04-27	1,143	427
Finland	2020-04-20	622	98
Germany	2020-04-20	9,506	7,073
Netherlands	2020-04-20	7,252	3,751
Norway	2020-04-13	425	131
Spain	2020-04-27	32,214	23,822
Sweden	2020-04-20	2,994	1,580
USA	2020-04-13	28,315	27,041

Table S2: Estimated excess deaths and COVID-19 deaths

Country	Deaths		YLL rates		Ratio of YLL Current over proj.
	Current	Projected	Current	Projected	
Algeria	732	171,534	29.872	7,001.897	234.400
Argentina	356	212,412	11.430	6,819.954	596.677
Australia	102	146,707	4.891	7,032.295	1,437.869
Austria	646	59,573	76.138	7,021.298	92.218
Bangladesh	1,012	592,125	15.803	9,247.097	585.162
Belgium	9,600	91,586	852.318	8,132.047	9.541
Bolivia	34	41,442	7.042	8,565.611	1,216.430
Brazil	31,502	908,009	287.183	8,277.722	28.824
Cameroon	18	50,535	0.849	2,411.725	2,839.045
Canada	3,765	266,741	111.211	7,878.414	70.842
Chile	12	96,205	0.910	7,298.586	8,017.083
China	1,023	8,642,939	1.136	9,595.971	8,447.795
Colombia	1,366	208,179	53.405	8,139.296	152.407
Czechia	320	67,843	33.904	7,188.069	212.009
Denmark	551	37,521	98.976	6,739.332	68.091
Dominican Republic	1,100	39,710	234.944	8,481.458	36.100
Ecuador	507	63,996	67.766	8,550.424	126.175
England	27,283	489,828	604.170	10,847.070	17.954
Finland	324	36,230	69.340	7,758.432	111.890
France	18,539	621,256	359.324	12,041.000	33.510
Germany	8,090	722,405	105.945	9,460.256	89.294
Greece	179	76,798	25.770	11,067.010	429.452
India	14,688	5,513,476	24.790	9,305.207	375.361
Ireland	1,343	26,313	295.196	5,783.687	19.593
Italy	31,676	477,895	626.042	9,445.056	15.087
Japan	624	1,055,426	6.886	11,648.750	1,691.636
Mexico	7,633	475,425	141.834	8,834.167	62.285
Netherlands	6,042	112,170	370.146	6,871.820	18.565
New Zealand	22	27,680	5.002	6,321.950	1,263.927
Norway	237	32,507	46.019	6,312.087	137.164
Pakistan	1,188	650,513	10.605	5,806.849	547.536
Panama	74	17,275	37.531	8,748.951	233.110
Philippines	909	368,084	16.239	6,575.852	404.933
Portugal	470	74,122	47.913	7,557.866	157.741
Romania	43	121,855	3.885	11,020.070	2,836.618
South Africa	34	198,365	0.730	4,266.969	5,848.951
South Korea	276	301,352	7.228	7,891.388	1,091.855
Spain	28,628	321,029	708.287	7,942.723	11.214
Sweden	4,395	66,393	445.872	6,735.563	15.106
Switzerland	1,657	56,606	192.516	6,576.895	34.163
Taiwan	7	179,828	0.688	17,681.810	25,689.710
USA	94,371	2,186,315	407.655	9,444.262	23.167

Table S3: Current and projected: COVID-19 deaths and YLL rates.

Country	YLL rates		Mean age-at-death		Deaths	
	Males	Females	Males	Females	Males	Females
Argentina	14.682	12.513	70.912	78.677	213	143
Australia	12.302	11.589	78.919	82.411	57	45
Belgium	10.459	9.429	80.413	84.807	4,852	4,748
Bolivia	22.980	25.039	61.817	65.402	23	11
Brazil	18.505	19.526	66.894	70.243	18,258	13,244
Cameroon	13.807	1.663	67.435	96.413	16	2
Canada	11.198	10.320	80.249	84.554	2,150	1,615
Colombia	19.826	19.182	66.747	70.336	833	533
Czechia	11.408	10.129	76.752	81.740	186	134
Denmark	10.482	9.694	79.462	84.093	314	236
Dominican Republic	21.627	24.704	63.327	63.315	550	550
France	12.367	11.811	78.540	82.951	10,972	7,567
Germany	11.427	9.738	79.310	84.392	4,488	3,602
Greece	15.234	13.162	75.374	79.921	125	54
India	23.427	22.205	55.680	59.274	9,792	4,896
Italy	12.177	10.494	78.145	83.733	18,747	12,929
Japan	13.415	11.785	77.308	83.934	399	225
Mexico	23.152	23.980	59.558	61.857	5,161	2,472
Netherlands	10.788	9.844	79.832	83.609	3,328	2,714
Norway	11.538	8.183	79.065	86.874	129	108
Pakistan	19.419	20.155	61.429	60.988	452	142
Panama	22.053	19.726	65.335	72.945	49	25
Philippines	17.394	21.213	63.439	64.956	582	327
Portugal	10.571	9.611	80.129	84.710	252	218
Romania	16.746	16.233	65.964	71.326	28	15
South Korea	13.626	12.021	75.357	81.575	148	128
Spain	11.625	10.683	79.495	84.043	16,182	12,445
Switzerland	10.142	8.928	82.186	86.257	954	703
Taiwan	21.235	29.970	65.833	57.500	6	1
USA	14.970	12.930	74.150	80.059	50,905	43,466

Table S4: Gender imbalances: COVID-19 YLL rates, COVID-19 death counts, and ages-at-death.

Country	Equalizing proportion
Argentina	0.573
Australia	0.742
Belgium	0.882
Bolivia	0.538
Brazil	0.765
Cameroon	0.018
Canada	0.692
Colombia	0.619
Czechia	0.641
Denmark	0.696
Dominican Republic	1.142
France	0.659
Germany	0.684
Greece	0.371
India	0.474
Italy	0.594
Japan	0.494
Mexico	0.496
Netherlands	0.744
Norway	0.592
Pakistan	0.326
Panama	0.449
Philippines	0.686
Portugal	0.787
Romania	0.516
South Korea	0.764
Spain	0.707
Switzerland	0.649
Taiwan	0.235
USA	0.738

Table S5: Ratio of equalizing to current deaths.

	Ratio	Deaths.Weighted.Average
1	Ratio COVID YLL to Flu (median year) YLL	0.438
2	Ratio COVID YLL to Flu (max year) YLL	0.263
3	Ratio COVID YLL to Transport YLL	0.569
4	Ratio COVID YLL to Heart disease YLL	0.055
5	Ratio COVID YLL to Excess mortality YLL	0.019

Table S6: Weighted Averages for Figure 1. Ratios of COVID YLL to Other Causes of Mortality.

	Age	Weighted_Avg
1	Under 55	0.241
2	55-75	0.422
3	75+	0.337

Table S7: Weighted Proportions for Figure 2. Proportion of total global YLL by age.