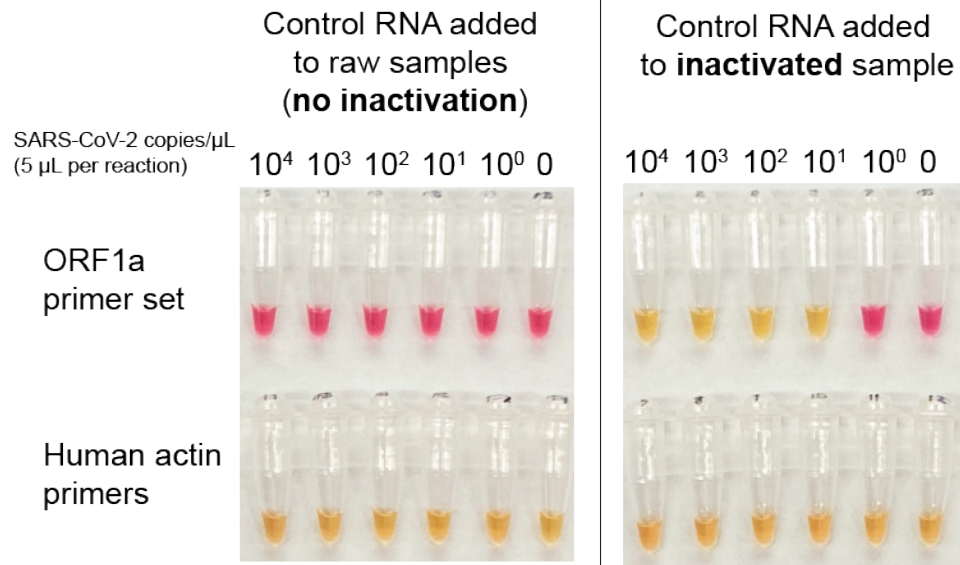


## Supplementary Materials

Supplemental Figure 1

Supplemental Table 1

Supplemental Table 2



**Supplemental Figure 1.** Sample inactivation enables limit of detection studies. (A) Endogenous RNase activity precludes limit of detection studies with direct addition of unencapsulated synthetic RNA to nasopharyngeal samples. (B) The TCEP/EDTA/heat inactivation step sufficiently inhibits RNases to allow detection of unencapsulated synthetic RNA added directly to the sample.

**Supplemental Table 1.** *In vitro* cross-reactivity study results.

<b>Sample Description</b>	<b>LAMP result for ORF1a primer set</b>	<b>LAMP result for N primer set</b>	<b>LAMP result for human actin primer set</b>
Twist SARS-CoV-2 RNA (10 <sup>3</sup> copies/uL; contains both ORF1a and N gene targets)	+	+	-
IDT SARS-CoV-2 N gene control plasmid (10 <sup>3</sup> copies/uL; contains N gene target only)	-	+	-
IDT SARS-CoV-1 N gene control plasmid (10 <sup>3</sup> copies/uL)	-	-	-
IDT MERS N gene control plasmid (10 <sup>3</sup> copies/uL)	-	-	-
SARS-CoV-2-negative, human metapneumovirus positive clinical NP specimen	-	-	+
SARS-CoV-2-negative, adenovirus positive and coronavirus 229E positive clinical NP specimen	-	-	+
SARS-CoV-2-negative, adenovirus positive clinical NP specimen	-	-	+
SARS-CoV-2-negative, parainfluenza type 3 positive clinical NP specimen	-	-	+
SARS-CoV-2-negative, parainfluenza type 2 positive clinical NP specimen	-	-	+
SARS-CoV-2-negative, RSV positive clinical NP specimen	-	-	+
SARS-CoV-2-negative, RSV positive clinical NP specimen	-	-	+
SARS-CoV-2-negative, influenza B positive clinical NP specimen	-	-	+
SARS-CoV-2-negative, influenza A (H1-2009) positive clinical NP specimen	-	-	+
SARS-CoV-2-negative, influenza A (H1-2009) positive clinical NP specimen	-	-	+

**Supplemental Table 2.** ORF1a, N, and human actin primer set sequences used in this study.

Orfla_F3	CGGTGGACAAATTGTCAC
Orfla_B3	CTTCTCTGGATTTAACACACTT
Orfla_LF	TTACAAGCTTAAAGAATGTCTGAACACT
Orfla_LB	TTGAATTTAGGTGAAACATTTGTCACG
Orfla_FIP	TCAGCACACAAAGCCAAAAATTTAT <b>TTTT</b> CTGTGCAAAGGAAATTAAGGAG
Orfla_BIP	TATTGGTGGAGCTAAACTTAAAGC <b>TTTT</b> CTGTACAATCCCTTTGAGTG
N-A-F3	TGGCTACTACCGAAGAGCT
N-A-B3	TGCAGCATTGTTAGCAGGAT
N-A-FIP	TCTGGCCCAGTTCCTAGGTAGTCCAGACGAATTCGTGGTGG
N-A-BIP	AGACGGCATCATATGGGTTGCACGGGTGCCAATGTGATCT
N-A-LF	GGACTGAGATCTTTCATTTTACCGT
N-A-LB	ACTGAGGGAGCCTTGAATACA
ACTB-F3	AGTACCCCATCGAGCACG
ACTB-B3	AGCCTGGATAGCAACGTACA
ACTB-FIP	GAGCCACACGCAGCTCATTGTATCACCAACTGGGACGACA
ACTB-BIP	CTGAACCCCAAGCCAACCGGCTGGGGTGTGAAGGTC
ACTB-LF	TGTGGTGCCAGATTTTCTCCA
ACTB-B	CGAGAAGATGACCCAGATCATGT