

# Supplementary Appendix

## Table of Contents

<b>Supplementary Methods</b> .....	<b>1</b>
<i>Symptom-based classifier</i> .....	1
<i>Inverse probability weighting</i> .....	1
<b>Supplementary Figures</b> .....	<b>2</b>
<i>Figure S1. Study Diagram</i> .....	2
<i>Figure S2. Incidence of Covid-19 infection in frontline healthcare workers compared to the general community</i> .....	3
<b>Supplementary Tables</b> .....	<b>4</b>
<i>Table S1. Partnering cohorts within the COPE Consortium and the number of participants from each</i> .....	4
<i>Table S2. COVID Symptom Tracker smartphone application questions as of April 24, 2020</i> .....	6
<i>Table S3. Baseline characteristics of frontline healthcare workers compared to the general community by country</i> .....	13
<i>Table S4. Symptoms reported by frontline healthcare workers compared to the general community at study entry and at the time of positive Covid-19 testing</i> .....	16

## Supplement to “Risk of symptomatic Covid-19 among frontline healthcare workers”

Long H. Nguyen, M.D., M.S.<sup>1,2,3\*</sup>, David A. Drew, Ph.D.<sup>1,2\*</sup>, Amit D. Joshi, MBBS, Ph.D.<sup>1,2</sup>, Chuan-Guo Guo<sup>1,2,4</sup>, M.S., Wenjie Ma, MBBS, Sc.D.<sup>1,2,3</sup>, Raaj S. Mehta, M.D.<sup>1,2</sup>, Daniel R. Sikavi, M.D.<sup>5</sup>, Chun-Han Lo, M.D., M.P.H.<sup>1,2,6</sup>, Sohee Kwon, M.D., M.P.H.<sup>1,2,3</sup>, Mingyang Song, M.D., Sc.D.<sup>1,2,6,7</sup>, Lorelei A. Mucci, Sc.D.<sup>6</sup>, Meir J. Stampfer, M.D., Dr.P.H.<sup>6,8</sup>, Walter C. Willett, M.D., Dr.P.H.<sup>6,7</sup>, A. Heather Eliassen, Sc.D.<sup>6</sup>, Jaime E. Hart, Sc.D.<sup>8,9</sup>, Jorge E. Chavarro, M.D., Sc.D.<sup>6,7,8</sup>, Janet W. Rich-Edwards, Sc.D.<sup>6,10</sup>, Christina C. Lawson, Ph.D.<sup>11</sup>, Richard Davies, M.A.<sup>12</sup>, Joan Capdevila Pujol, Ph.D.<sup>12</sup>, Karla A. Lee, MBBCh, M.Sc.<sup>13</sup>, Mary Ni Lochlainn, MBBCh<sup>13</sup>, Thomas Varsavsky, M.Sc.<sup>14</sup>, Mark S. Graham, Ph.D.<sup>14</sup>, Carole H. Sudre, Ph.D.<sup>14</sup>, M. Jorge Cardoso, Ph.D.<sup>14</sup>, Jonathan Wolf, B.Sc.<sup>12</sup>, Sebastien Ourselin, Ph.D.<sup>14</sup>, Claire J. Steves, Ph.D.<sup>13</sup>, Tim D. Spector, M.D.<sup>13</sup>, Andrew T. Chan, M.D., M.P.H.<sup>1,2,15,16</sup> on behalf of the COPE Consortium

\*Contributed equally to this work

## Supplementary Methods

### Symptom-based classifier

Since reporting a positive Covid-19 test is conditional upon receiving a test and to potentially capture the spectrum of disease that may not necessarily present for diagnostic evaluation and treatment, we used the COVID Symptom Tracker to generate a symptom-based classifier among a subset of 7,104 Covid-19-positive cases compared to 11,297 Covid-19-negative controls to generate a linear model for likelihood of Covid-19 infection described in Menni *et al.*<sup>26</sup> Selected factors were retained on the basis of a stepwise linear regression.

$$\text{Predicted Covid-19 infection} = -(0.01 \times \text{age}) + (0.44 \times \text{male sex}) + (1.75 \times \text{loss of smell/taste}) + (0.31 \times \text{severe/significant persistent cough}) + (0.49 \times \text{severe fatigue}) + (0.39 \times \text{skipped meals}) + \text{intercept}$$

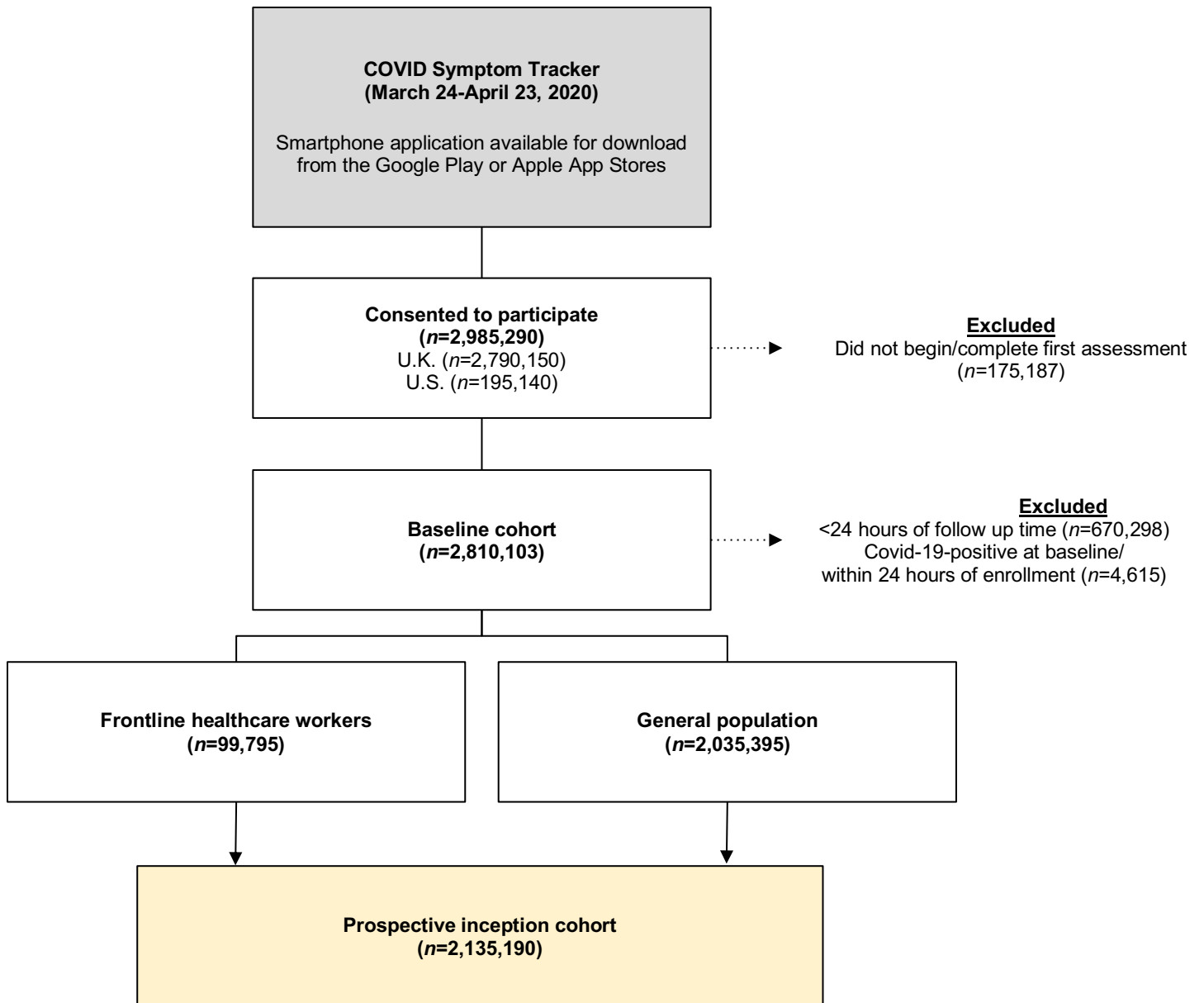
This model achieved a sensitivity of 0.65 (95% CI: 0.62 to 0.67) and specificity of 0.78 (95% CI: 0.76 to 0.80).

### Inverse probability weighting

To explore if the risk of a positive Covid-19 test was explained by differences in testing access and criteria, we calculated the probability of receiving a Covid-19 test as a function of demographic factors, including age, contact with a known or suspected person with Covid-19 in the community, being a frontline HCW, and having symptoms at baseline (Table S4) within both the U.S, and the U.K. This procedure was performed in both the entire cohort and separately among the U.S.-based and U.K.-based participants to account for the possibility that predictors for obtaining a Covid-19 test differed by country of enrollment. We then performed inverse probability weighted (IPW) Cox proportional hazards modeling stratified by 5-year age group and calendar date at study entry and additionally adjusted for sex, history of diabetes, heart disease, lung disease, kidney disease, and current smoker status (each yes/no), and body mass index (17-19.9, 20-24.9, 25-29.9, and  $\geq 30$  kg/m<sup>2</sup>).

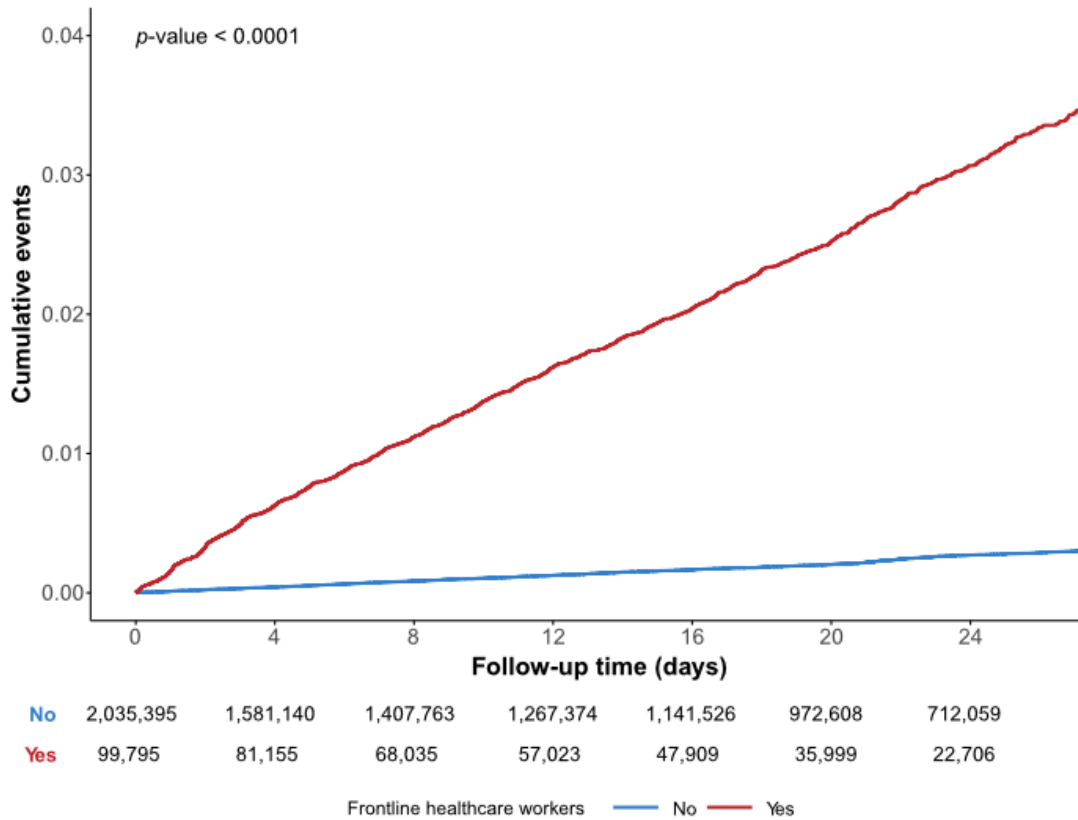
# Supplementary Figures

Figure S1. Study Diagram



**Figure S2. Incidence of Covid-19 infection in frontline healthcare workers compared to the general community.**

Survival distributions compared using the log-rank test. Data from March 24-April 23, 2020 shown with the number remaining at risk for each timepoint.



## Supplementary Tables

**Table S1. Partnering cohorts within the COPE Consortium and the number of participants from each.**

<b>Cohort Name</b>	<b>COPE Consortium contact</b>	<b>Participants using the COVID Symptom Tracker to date†</b>
ACS Cancer Prevention Study 3	Alpa V. Patel, Anusila Deka	6,714
The Agricultural Health Study	Laura Beane-Freeman/ Dale P Sandler	50
ASPREE-XT	Michael E. Ernst, Brenda Kirpach, Anne M. Murray	25
Black Women's Health Study	Julie R. Palmer, Lynn Rosenberg	550
Growing Up to Today Study	Jaime E. Hart, Jorge E. Chavrrro	1,170
The GuLF Study	Dale P. Sandler	199
Health Professionals Follow-up Study	Lorelei A. Mucci, Walter C. Willett	1,044
Multiethnic Cohort Study	Loic Le Marchand, Lynne R. Wilkens	3,112
Nurses' Health Study I, II and 3	Meir Stampfer, Walter C. Willett, Heather A. Eliassen, Jaime E. Hart, Jorge E. Chavarro	15,718
PREDICT 2	Andrew T. Chan, Tim D. Spector	251
The Sister Study	Dale P. Sandler	2,036
Stanford Nutrition Studies	Christopher D. Gardner	362
UCSD/COH California Teachers	Maria Elena Martinez, James V.	928

Study	Lacey	
Twins U.K.	Tim D. Spector	4,367

---

†Only including users who both confirmed being a member of a participating study and agreed to data linkage. Cohorts invited participants beginning on different dates and over different time periods.

**Table S2. COVID Symptom Tracker smartphone application questions as of April 24, 2020.**

---

**Baseline Questions**

---

**About your work**

Are you a health care worker (including hospital, elderly care or in the community)?	<ul style="list-style-type: none"><li>- Yes, currently treat patients</li><li>- Yes, do not currently treat patients</li><li>- No</li></ul>
Do you care for multiple people in the community, with direct contact with your patients?	<ul style="list-style-type: none"><li>- Yes/No</li></ul>
Since the COVID-19 epidemic began, have you physically worked in?	<ul style="list-style-type: none"><li>- Hospital inpatient</li><li>- Hospital outpatient</li><li>- Clinic outside a hospital</li><li>- Nursing home/elderly care or group care facility</li><li>- Home health</li><li>- School clinic</li><li>- Other health care facility</li></ul>
Have you EVER interacted (in person) with patients with documented or presumed COVID-19 infection?	<ul style="list-style-type: none"><li>- Yes, documented COVID-19 cases only</li><li>- Yes, suspected COVID-19 case only</li><li>- Yes, both documented &amp; suspected COVID-19 cases</li><li>- Not that I know of</li></ul>
Since the COVID-19 epidemic began, have you used personal protective equipment (PPE) at work?	<ul style="list-style-type: none"><li>- Always</li><li>- Sometimes</li><li>- Never</li></ul>

\*Depending on your specific work requirements, PPE

might include gloves, masks, face shields, etc.

If always:

- I have had all the PPE I need for work
- I had to reuse PPE because of shortage

If sometimes:

- I haven't always needed to use PPE, but have had enough when I did
- I would have used PPE all the time, but I haven't had enough
- I've had to reuse PPE because of shortage

If never:

- I haven't needed PPE
- I needed PPE, but it wasn't available

## **About you**

What year were you born?

Please enter your year of birth

What sex were you assigned at birth?

- Male
- Female
- Intesex
- Prefer not to say

Which of the following best describes your ethnicity? (UK Only)

- Asian/Asian British
- Indian, Pakistani, Bangladeshi, other
- Black/Black British
- Caribbean, African, other
- Mixed race- White and Black/Black British
- Mixed race - other
- White - British, Irish, other
- Chinese/Chinese British



- Middle Eastern/Middle Eastern British
- Arab, Turkish, other
- Other ethnic group
- Prefer not to say

What is your race (check all that apply): (US only)

- American Indian or Alaska Native
- Asian
- Black or African-American
- Native Hawaiian or other Pacific Islander
- White
- Other, please specify
- Prefer not to say

What is your ethnicity:

- Hispanic or Latino or Spanish origin
- Not Hispanic or Latino, or Spanish origin
- Prefer not to say

Your height?

Please enter your height in feet & inches/centimetres

Your weight?

Please enter your weight in pounds/kilograms

In general, do you have any health problems that require you to stay at home?

- Yes/No

Have you EVER been exposed to someone with documented or presumed COVID-19 infection (such as co-workers, family members, or others)? Please check all that apply.

- Yes, documented COVID-19 cases
- Yes, both documented & suspected COVID-19 cases
- Yes, presumed COVID-19 cases
- Not that I know of

## About your health

Are you pregnant? - Yes/No

Do you have heart disease? - Yes/No

Do you have diabetes? - Yes/No

Do you have lung disease or asthma? - Yes/No

Do you smoke? - Yes/No

Do you have kidney disease? - Yes/No

Are you living with cancer? - Yes/No

Are you on chemotherapy or immunotherapy for cancer? - Yes/No

Do you regularly take immunosuppressant medications  
(including steroids, methotrexate, biologics)? - Yes/No

Do you regularly take aspirin (baby aspirin or standard  
dose)? - Yes/No

Do you regularly take "NSAIDs" like ibuprofen, nurofen,  
diclofenac, naproxen? - Yes/No

Are you regularly taking blood pressure medications  
ending in -pril, such as enalapril, lisinopril, captopril,  
ramipril) ? - Yes/No

---

## Follow-Up Questions (Asked Daily)

### Covid-19 Test

Have you had a test for COVID-19? - Yes/No

Did you test positive for COVID-19? - Yes/No

### **How You Feel**

How do you feel right now? - I feel as healthy as normal

- I'm not feeling quite right

### **Describe Symptoms**

Do you have a fever? - Yes/No

If you are able to measure it, what is your temperature? Please enter your temperature

Do you have a persistent cough (coughing a lot for more - Yes/No

than an hour, or 3 or more coughing episodes in 24

hours)?

Are you experiencing unusual fatigue? - No

- Mild fatigue

- Severe fatigue

- I struggle to get out of bed

Are you experiencing unusual shortness of breath? - No

- Yes. Mild symptoms - slight shortness of breath during ordinary activity

- Yes. Significant symptoms - breathing is comfortable only at rest

- Yes. Severe symptoms - breathing is difficult even at rest

Do you have a loss of smell/taste? - Yes/No

Do you have an unusually hoarse voice? - Yes/No

Are you feeling an unusual chest pain or tightness in your chest? - Yes/No

Do you have an unusual abdominal pain? - Yes/No

Are you experiencing diarrhoea? - Yes/No

Do you have any of the following symptoms: confusion, disorientation or drowsiness? - Yes/No

Have you been skipping meals? - Yes/No

Do you have a headache? - Yes/No

Do you have a sore throat? - Yes/No

Do you have unusual strong muscle pains? - Yes/No

Are there other important symptoms you want to share with us? - Yes/No

### **Healthcare Worker Exposure**

In the last day, did you treat patients in person with documented or presumed COVID-19 infection? - Yes, documented COVID-19 cases  
- Yes, both documented & suspected COVID-19 cases  
- Yes, presumed COVID-19 cases  
- Not that I know of

In the last day, did you use personal protective equipment (PPE) at work? \*Depending on your specific work requirements, PPE might include gloves, masks, face - Always  
- Sometimes  
- Never

shields, etc.

If always:

- I have had all the PPE I need for work
- I had to reuse PPE because of shortage

If sometimes:

- I haven't always needed to use PPE, but have had enough when I did
- I would have used PPE all the time, but I haven't had enough
- I've had to reuse PPE because of shortage

If never:

- I haven't needed PPE
  - I needed PPE, but it wasn't available
-

**Table S3. Baseline characteristics of frontline healthcare workers compared to the general community by country**

	United States (U.S.) ( <i>n</i> =139,536)		United Kingdom (U.K.) ( <i>n</i> =1,995,654)	
	Frontline HCWs ( <i>n</i> =14,531)	General population ( <i>n</i> =125,005)	Frontline HCWs ( <i>n</i> =85,264)	General population ( <i>n</i> =1,910,390)
<b>Age (years)</b>	50 [38, 61]	57 [41, 68]	41 [32, 51]	43 [32, 56]
<25	2.0	2.3	5.0	5.2
25-35	15.0	10.2	26.3	21.0
35-44	21.8	15.2	26.0	23.4
45-54	19.0	15.4	24.8	21.2
55-64	27.7	20.5	15.9	16.9
≥65-69	14.4	36.3	2.0	12.3
<b>Male sex (%)</b>	15.0	33.0	18.0	37.0
<b>Ethnicity</b>				
Hispanic	6.4	4.9	0	3.9
Non-Hispanic	91.5	92.0	100	82.9
Prefer not to say	2.1	3.1	0	13.2

<b>Race</b>				
Black	2.7	3.1	1.7	1.2
White	92.0	91.7	92.2	94.9
Asian	3.6	3.5	4.3	1.2
Other	1.7	1.7	1.7	1.8
<b>BMI (kg/m<sup>2</sup>)</b>	25.8 [22.9, 30.6]	25.8 [22.8, 30.0]	25.8 [22.8, 301.2]	25.3 [2257, 2902]
17-19.9	5.9	8.1	5.8	8.3
20-24.9	36.9	35.1	38.3	39.4
25-29.9	30.1	32.0	30.1	31.5
≥30	27.2	24.8	25.7	20.8
<b>Comorbidities (%)</b>				
Diabetes	4.5	6.1	2.2	2.9
Heart Disease	3.7	6.1	1.3	2.2
Lung Disease	14.7	12.9	12.8	12.1
Kidney Disease	1.0	1.5	0.5	0.6
Cancer	1.1	2.3	0.4	1.2
<b>Pregnant (% of females)</b>	1.1	0.7	0.9	1.1
<b>Medication usage (n, %)</b>				

NSAIDs	18.0	15.4	6.5	5.5
Immunosuppressants	3.5	3.8	2.3	3.1
Chemotherapy/Immunotherapy	0.2	0.5	0.1	0.2
Aspirin	10.4	14.9	1.8	3.7
ACE inhibitor	9.2	11.5	4.4	4.5
<b>Current smoking (%)</b>	5.1	5.3	11.3	7.9
<b>Housebound (%)</b>	2.9	5.2	2.5	4.2

---

Abbreviations: ACE (angiotensin converting enzyme), BMI (body mass index), m (meter), kg (kilogram), non-steroidal anti-inflammatory drugs (NSAIDs)

Median [IQR] is presented for continuous variables, proportions for all others.

Frequencies and proportions are calculated based on the total number of participants with available data.

History of cancer, aspirin use, and smoking status have been queried since launch in the U.S. and since 3/29/2020 in the U.K. Race and ethnicity questions added on 4/17/2020.



**Table S4. Symptoms reported by frontline healthcare workers compared to the general community at study entry and at the time of positive Covid-19 testing**

	Study entry (n=2,135,190)		Positive Covid-19 testing† (n=5,545)	
	Frontline HCWs (n=99,795)	General population† (n=2,035,395)	Frontline HCWs (n=1,922)	General population† (n=3,623)
<b>Fever</b>	2.8	1.6	48.7	43.7
<b>Persistent cough</b>	7.0	4.9	63.5	57.5
<b>Fatigue</b>	13.8	9.5	86.5	78.0
<b>Shortness of breath</b>	6.1	4.9	45.8	47.8
<b>Loss of smell/taste</b>	4.6	2.0	58.4	51.2
<b>Hoarse voice</b>	4.3	1.9	37.5	32.9
<b>Chest pain</b>	6.9	3.2	43.2	43.7
<b>Abdominal pain</b>	2.9	1.3	24.7	23.9
<b>Diarrhea</b>	3.5	2.7	29.2	31.2
<b>Delirium</b>	1.8	2.2	14.8	23.4
<b>Skipped meals/anorexia</b>	4.6	2.9	43.7	43.1
<b>Headache</b>	12.3	6.2	74.3	57.2
<b>Sore throat</b>	10.1	5.4	55.1	37.9

<b>Myalgias</b>	3.1	1.1	32.6	21.0
<b>No symptom</b>	79.8	85.6	3.3	11.7

---

Presented as %.

† symptoms reported at the time of positive testing.

Proportions are calculated based on the total number of participants with available data.