

# Supplementary Materials for

Estimating effects of physical distancing on the COVID-19 pandemic using an urban mobility index

Jean-Paul R. Soucy, Shelby L. Sturrock, Isha Berry, Duncan J. Westwood, Nick Daneman, Derek R. MacFadden, Kevin A. Brown

Correspondence to: [jeanpaul.soucy@mail.utoronto.ca](mailto:jeanpaul.soucy@mail.utoronto.ca)

**This PDF file includes:**

Materials and Methods

Figs. S1 to S2

Tables S1 to S3

## Materials and Methods

### Mobility Index

The Citymapper Mobility Index (CMI; <https://citymapper.com/cmi>) includes data on 41 cities in 23 countries. CMI measures the relative frequency of trips planned within the application in 41 cities across the Americas, Europe, Australia and Asia, compared to an internal reference at the beginning of 2020 (or at the end of 2019, in the case of Singapore and Hong Kong). The CMI is available from March 2<sup>nd</sup> to present.

To validate our use of CMI as a measurement for adherence to physical distancing measures, we plotted the CMI in each city before and after the first announcement of major national or sub-national physical distancing interventions, namely gathering restrictions and/or mandatory closures (Fig. 1, Table S2). Unlike a declaration of emergency, these measures have clear and consistent implications across regions. The announcement of physical distancing measures generally coincided with steep drops in mobility throughout the month of March, although in many cases mobility was declining to some extent prior to these announcements.

The CMI dataset contained two French cities (Paris and Lyon), but region-level cumulative case counts were not available for France for the entire study period. In subsequent analyses, we calculated a populated weighted CMI for all of France based on the two cities' metropolitan area populations.

### COVID-19 Case Growth Rates

We obtained national and sub-national (where available) cumulative case time series for countries represented in the Citymapper dataset (Table S3). In all, we obtained 40 regional- and national-level cumulative case time series. We calculated daily growth rates for each region (presented as a percentage) by dividing the number of new cases reported in a given day by the cumulative number of cases as of the previous day. In our models, we used 3 weeks of case data, beginning with the week of March 23, 2020 and concluding with the week of April 6, 2020.

We used multilevel linear regression with random intercepts for locations nested within countries (to account for the non-independence of observations from the same location and for the clustering of sub-national units within a country, respectively) to estimate the association between the logarithm of the mean daily growth rate and mean CMI in prior weeks. All models were fit using Stan (15) via the rstanarm package (version 2.19.3) (16) in R (version 3.6.3) (17). For all models, we used the default settings and default scaled, weakly informative priors for all parameters.

Based on the known lag between infection and symptom onset of 5.1 days (8), plus an estimated lag between symptom onset and public reporting of 5 to 15 days (e.g., 6.4 days in Singapore up to March 17 (9)), we used 2-week lag as our primary analysis, with a 3-week lag as a sensitivity analysis. To adjust for epidemic timing, we ran an additional model including days since the 100<sup>th</sup> case as a continuous covariate (excluding the Principality of Monaco, which had fewer than 100 cases by the end of the study period). However, we note that epidemic timing is closely related to the implementation of physical distancing and reductions in mobility. For example, Italy, which had an earlier epidemic than other European countries, had a substantially lower CMI in early March than other European countries in the dataset.

As a sensitivity analysis, we re-ran the model using median daily growth rate as the outcome. This method is less influenced by outliers, such as the one caused by a change in case definition in Quebec, Canada on March 23.

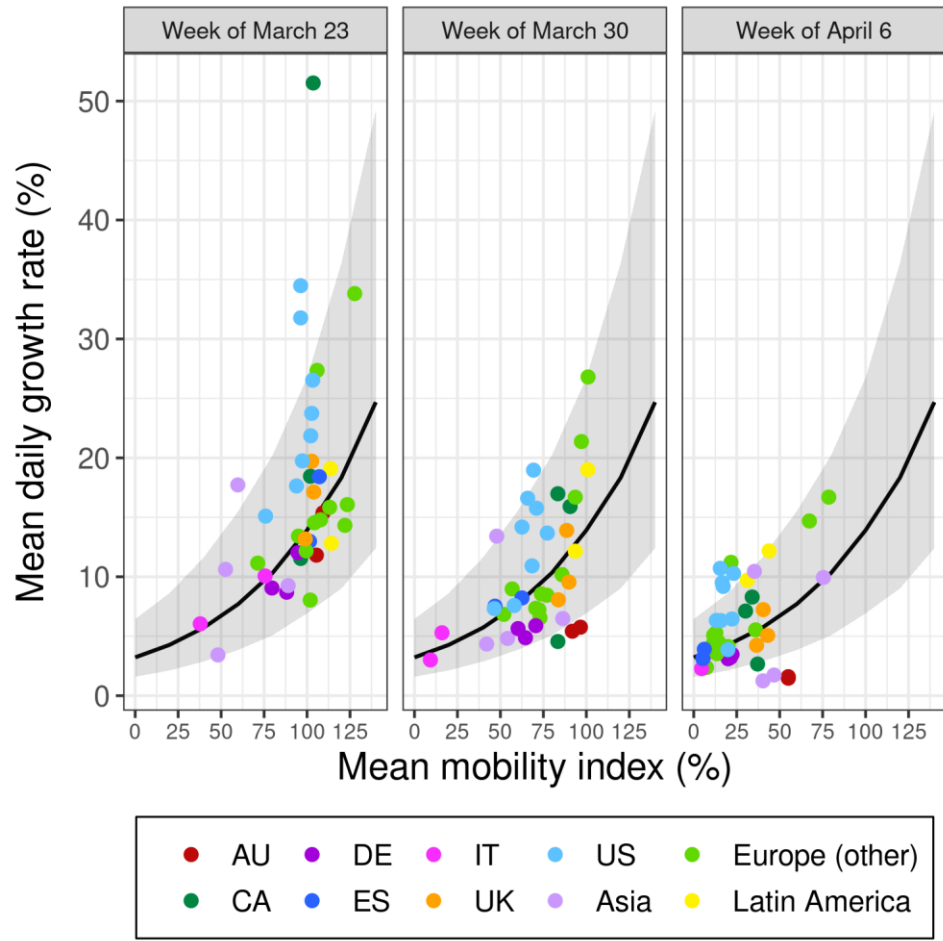
#### COVID-19 Instantaneous Reproductive Number

The instantaneous reproductive number is a quantity signifying the average number of secondary infections a person infected at time  $t$  would be expected to generate given that conditions remain unchanged (18). We estimated the instantaneous reproductive for the time intervals corresponding to the weeks of March 23, March 30, and April 6 using the EpiEstim package (version 2.2-1) (19) in R and daily incidence from March 8 to April 12. We employed the parametric serial interval method (20) using parameters from Du and colleagues (21) (mean = 3.96 days, SD = 4.75 days).

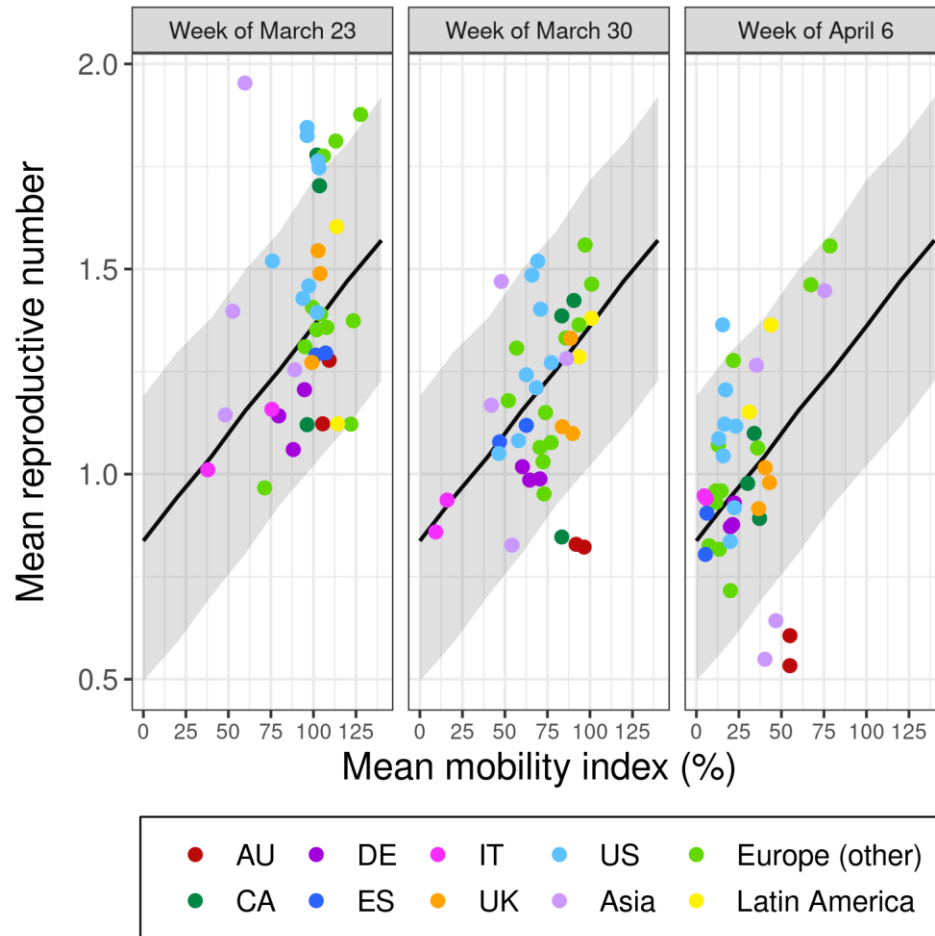
We used multilevel linear regression with random intercepts for locations nested within countries to estimate the association between the calculated instantaneous reproductive number and mean CMI in prior weeks. We used a 2-week lag as our primary analysis with a 3-week lag as a sensitivity analysis. To adjust for time since epidemic start, we ran an additional model including days since the 100<sup>th</sup> case as a continuous covariate (excluding the Principality of Monaco, which had fewer than 100 cases at the end of the study period).

#### Imported cases

Data on imported versus locally acquired cases were not available for most locations, so we were unable to adjust for this factor during the analysis. As a sensitivity analysis, we re-ran the models by excluding the first week (March 23) of case data. Cases reported during this first week are much more likely to represent imported cases than cases reported during later weeks, since travel restrictions were implemented during the third week of March in many countries (22).



**Fig. S1.** The association between mean daily growth rate (aggregated by week) and mean mobility index 3 weeks prior for 40 states and countries. Each pair of weeks (labeled according to the week growth rate was measured) is plotted separately for a model fit on all 3 weeks of data. The 95% prediction interval is shown in gray. AU = Australia; CA = Canada; DE = Germany; ES = Spain; IT = Italy; UK = United Kingdom; US = United States.



**Fig. S2.** The association between the mean instantaneous reproductive number (aggregated by week) and mean mobility index 3 weeks prior for 40 states and countries. Each pair of weeks (labeled according to the week the reproductive number was estimated) is plotted separately for a model fit on all 3 weeks of data. The 95% prediction interval is shown in gray. AU = Australia; CA = Canada; DE = Germany; ES = Spain; IT = Italy; UK = United Kingdom; US = United States.

**Table S1.** Date when the first major physical distancing measure (restrictions on public gatherings or mandatory business closures) was announced by state or country.

Country	City	Geography of restriction	Date announced	Restriction type
<b>Australia</b>				
Australia	Melbourne	National	March 13 [1]	Ban gatherings > 500 people
	Sydney			
<b>Europe</b>				
Austria	Vienna	National	March 10 [2]	Ban gatherings > 500 outdoors Ban gatherings > 100 indoors
Belgium	Brussels	National	March 12 <sup>a</sup> [3]	Emergency measures (closures of bars, restaurants, etc.)
Denmark	Copenhagen	National	March 12 <sup>a</sup> [4]	Ban gatherings > 100 people
France	Lyon	National	March 13 <sup>a</sup> [5]	Ban gatherings > 100 people
	Paris			
Germany	Berlin	National	March 08 [6]	Ban gatherings > 1000 people
	Hamburg			
	Rhine-Ruhr			
Italy	Milan	Sub-national (Lombardia)	March 08 [7]	Quarantine – Northern Italy
	Rome	National	March 09 [8]	Quarantine – Nationwide
Monaco	Monaco	National	March 13 [9]	Ban gatherings > 100 people
Netherlands	Amsterdam	National	March 12 [10]	Ban gatherings > 100 people
Portugal	Lisbon	National	March 14 [11]	Ban gatherings > 100 people
Russia	Moscow	National	March 24 [12]	Emergency measures (closures of nightclubs, cinemas, etc.)
	St. Petersburg			
Spain	Barcelona	National	March 13 [13]	State of emergency, restrictions on free movement
	Madrid			
Sweden	Stockholm	National	March 11 [14]	Ban gatherings > 500 people
Turkey	Istanbul	National	March 12 [15]	Closure of “places where people tend to mingle”
United Kingdom	Birmingham	National	March 16 [16]	Advised to avoid gatherings and crowded places, work from home where possible
	London			
	Manchester			
<b>Canada and the United States</b>				
Canada	Vancouver	Sub-national (British Columbia)	March 12 [17]	Ban gatherings >250 people
	Montreal	Sub-national (Quebec)	March 13 [18]	Ban gatherings >250 people
	Toronto	Sub-national (Ontario)	March 13 [19]	Ban gatherings >250 people
United States	Los Angeles	Sub-national (California)	March 11 <sup>b</sup> [20]	Bans gatherings >250 people
	San Francisco			
	Seattle	Sub-national (Washington)	March 11 <sup>b</sup> [21]	Bans gatherings >250 people
	New York City	Sub-national (New York)	March 12 <sup>b</sup> [22]	Bans gatherings >500 people
	Philadelphia	Sub-national (Pennsylvania)	March 12 <sup>b</sup> [23]	Bans gatherings >250 people
	Boston	Sub-national (Massachusetts)	March 13 <sup>b</sup> [24]	Bans gatherings >250 people

	Chicago	Sub-national (Illinois)	March 13 <sup>b</sup> [25]	Bans gatherings >1000 people
	Washington DC	Sub-national (District of Columbia)	March 13 <sup>b</sup> [26]	Bans gatherings >250 people
<b>Latin America</b>				
<b>Mexico</b>	Mexico City	National	March 14 [27]	Cancellation of sporting and events in schools; school closures
<b>Brazil</b>	São Paulo	National	March 20 [28]	State of emergency declared
<b>Asia</b>				
<b>China</b>	Hong Kong	National	January 29 [29]	Closure of public facilities
<b>South Korea</b>	Seoul	Local	February 21 [30]	Closure of public spaces, protests banned
<b>Singapore</b>	Singapore	National	March 20 [31]	Ban gatherings >250 people
<b>Japan</b>	Tokyo	National	February 27 [32]	School closures, people urged to avoid congregating in enclosed spaces

<sup>a</sup> Cancellation of larger gatherings (>1000 or >5000 people) recommended prior to this date

<sup>b</sup> Regional state of emergency declared before this date

[1] Australia: <https://www.abc.net.au/news/2020-03-13/coronavirus-scott-morrison-coag-premiers-cancelling-events/12053382>

[2] Austria: <https://orf.at/stories/3157262/>

[3] Belgium: <https://www.forbes.com/sites/emanuelabarbiroglio/2020/03/13/covid-19-emergency-measures-in-belgium-to-avoid-italian-style-lockdown/#4f4d3f8c39fd>

[4] Denmark: <https://economictimes.indiatimes.com/news/international/world-news/denmark-shuts-schools-and-universities-after-surge-in-coronavirus-cases/articleshow/74589282.cms?from=mdr>

[5] France: <https://www.thelocal.fr/20200313/france-bans-gatherings-of-over-100-people-to-fight-coronavirus-pandemic>

[6] Germany: <https://www.rte.ie/news/coronavirus/2020/0308/1120971-germany-events-covid-19/>

[7] Italy – Milan: <https://www.bbc.com/news/world-middle-east-51787238>

[8] Italy – Nationwide: <https://www.bbc.com/news/world-europe-51810673>

[9] Monaco: <https://forbes.mc/article/coronavirus-monaco-bans-gatherings-of-more-than-100-people>

[10] Netherlands: <https://nationalpost.com/pmn/health-pmn/dutch-ban-big-public-events-over-coronavirus>

[11] Portugal: <https://www.bloomberg.com/news/articles/2020-03-14/widespread-clampdown-takes-hold-spanish-emergency-virus-update-k7s4ru6n>

[12] Russia: <http://government.ru/orders/selection/401/39260/>

[13] Spain: <https://www.pbs.org/newshour/health/spain-to-declare-state-of-emergency-over-virus-outbreak>

[14] Sweden: <https://www.bloomberg.com/news/articles/2020-03-11/sweden-health-agency-seeks-ban-on-meetings-of-500-people-or-more>

[15] Turkey: <https://www.bloomberg.com/news/articles/2020-03-12/turkey-screens-europe-bound-refugees-for-coronavirus>

[16] United Kingdom: <https://www.bbc.com/news/uk-51917562>

[17] Canada – British Columbia: <https://www.vicnews.com/news/covid-19-province-bans-large-gatherings-in-b-c/>

[18] Canada – Quebec: <https://montrealgazette.com/news/local-news/covid-19-montreal-st-patricks-parade-postponed-events-drawing-250-or-more-cancelled/>

[19] Canada – Ontario: <https://globalnews.ca/news/6672452/ontario-health-official-coronavirus-events/>

[20] USA – California: <https://www.gov.ca.gov/2020/03/11/california-public-health-experts-mass-gatherings-should-be-postponed-or-canceled-statewide-to-slow-the-spread-of-covid-19/>

[21] USA – Washington State:

[https://coronavirus.dc.gov/sites/default/files/dc/sites/coronavirus/release\\_content/attachments/DOH\\_Rulemaking\\_Mass-Gatherings.pdf](https://coronavirus.dc.gov/sites/default/files/dc/sites/coronavirus/release_content/attachments/DOH_Rulemaking_Mass-Gatherings.pdf)

- [22] USA – New York: <https://www.governor.ny.gov/news/during-novel-coronavirus-briefing-governor-cuomo-announces-new-mass-gatherings-regulations>
- [23] USA – Philadelphia: <https://www.timesleader.com/news/776061/wolf-recommends-suspending-large-gatherings-discourages-non-essential-travel>
- [24] USA – Massachusetts: <https://www.mass.gov/doc/order-prohibiting-gatherings-of-more-than-250-people/download>
- [25] USA – Illinois: <https://www2.illinois.gov/Pages/Executive-Orders/ExecutiveOrder2020-04.aspx>
- [26] USA – Washington: <https://www.governor.wa.gov/sites/default/files/20-07%20Coronavirus%20%28tmp%29.pdf>
- [27] Mexico: <https://www.eluniversal.com.mx/nacion/coronavirus-sep-cancela-eventos-deportivos-y-civicos-en-escuelas>; <https://www.am.com.mx/noticias/Vacaciones-de-Semana-Santa-se-adelantan-y-extienden-por-coronavirus-20200314-0021.html>
- [28] Brazil: <https://www.saude.gov.br/noticias/agencia-saude/46568-ministerio-da-saude-declara-transmissao-comunitaria-nacional>
- [29] Hong Kong: <https://www.lcsd.gov.hk/clpss/en/webApp/NewsDetails.do?id=14683>;  
<https://fortune.com/2020/03/19/coronavirus-hong-kong-quarantine-tracking/>
- [30] South Korea – Seoul: <https://www.nytimes.com/2020/02/23/world/asia/china-coronavirus.html>
- [31] Singapore: [https://www.channelnewsasia.com/news/singapore/covid19-events-gatherings-suspended-june-250-participants-12560620?cid=h3\\_referral\\_inarticlelinks\\_24082018\\_cna](https://www.channelnewsasia.com/news/singapore/covid19-events-gatherings-suspended-june-250-participants-12560620?cid=h3_referral_inarticlelinks_24082018_cna)
- [32] Japan: <https://www.vox.com/covid-19-coronavirus-explainers/2020/3/28/21196382/japan-coronavirus-cases-covid-19-deaths-quarantine>; <https://business.financialpost.com/pmn/business-pmn/japan-to-create-fund-to-subsidize-parents-during-school-closure-nikkei>



**Table S2.** Model coefficients (with 95% credible intervals) for the association between a 10% decrease in the mobility index and the mean daily growth rate or instantaneous reproductive number (both aggregated by week) assuming a lag of 2 or 3 weeks, using outcome data for the week of March 23. Model coefficients are presented with and without adjustment for days since 100<sup>th</sup> case. Models exclude the first week of data (March 23–March 29) for 40 countries and states (39 in the adjusted models). CI = credible interval.

<b>Mean daily growth rate (%) (<math>\exp(\beta)</math>)</b>			
<b>Mobility index</b>	<b>Unadjusted (95% CI)</b>	<b>Adjusted (95% CI)<sup>a</sup></b>	
	<b>Mobility<sup>b</sup></b>	<b>Mobility<sup>b</sup></b>	<b>Days since 100 cases<sup>c</sup></b>
2-week lag	0.780 (0.722, 0.845)	0.913 (0.852, 0.980)	0.554 (0.478, 0.644)
3-week lag	0.884 (0.865, 0.903)	0.938 (0.908, 0.971)	0.668 (0.551, 0.800)
<b>Instantaneous reproductive number (<math>\beta</math>)</b>			
<b>Mobility index</b>	<b>Unadjusted (95% CI)</b>	<b>Adjusted (95% CI)<sup>a</sup></b>	
	<b>Mobility<sup>b</sup></b>	<b>Mobility<sup>b</sup></b>	<b>Days since 100 cases<sup>c</sup></b>
2-week lag	-0.065 (-0.093, -0.037)	-0.039 (-0.068, -0.010)	-0.137 (-0.195, -0.079)
3-week lag	-0.038 (-0.049, -0.028)	-0.026 (-0.040, -0.011)	-0.084 (-0.154, -0.015)

<sup>a</sup> Excludes the Principality of Monaco.

<sup>b</sup> Coefficient for a 10% decrease in the mobility index.

<sup>c</sup> Coefficient for a 10-day increase since the 100<sup>th</sup> reported case.

**Table S3.** Sources for cumulative case data and whether they were obtained at a national or sub-national level.

Country	City	Spatial granularity of case data <sup>a</sup>	Source
<b>Australia</b>			
Australia	Melbourne	Sub-national (Victoria)	Johns Hopkins CSSE [1]
	Sydney	Sub-national (New South Wales)	
<b>Europe</b>			
Austria	Vienna	Sub-national (Vienna)	Bundesministerium Soziales, Gesundheit, Pflege und Konsumentenschutz [2]
Belgium	Brussels	Sub-national (Brussels)	Sciensano [3]
Denmark	Copenhagen	National	Johns Hopkins CSSE [1]
France	Lyon	<i>National</i>	Public Health France and Regional Health Agencies [4]
	Paris		
Germany	Berlin	Sub-national (Berlin)	Robert Koch-Institut and Jan-Philip Gehrcke [5]
	Hamburg	Sub-national (Hamburg)	
	Rhine-Ruhr	Sub-national (North Rhine-Westphalia)	
Italy	Milan	Sub-national (Lombardia)	Presidenza del Consiglio dei Ministri - Dipartimento della Protezione Civile [6]
	Rome	Sub-national (Lazio)	
Monaco	Monaco	National	Johns Hopkins CSSE [1]
Netherlands	Amsterdam	National	Johns Hopkins CSSE [1]
Portugal	Lisbon	Sub-national (Lisbon and Tagus Valley)	Direção-Geral da Saúde [7]
Russia	Moscow	Sub-national (Moscow)	Federal Service for Surveillance on Consumer Rights Protection and Human Wellbeing and Yandex (Moscow) [8]
	St. Petersburg	Sub-national (St. Petersburg)	Federal Service for Surveillance on Consumer Rights Protection and Human Wellbeing and Yandex (St. Petersburg) [9]
Spain	Barcelona	Sub-national (Cataluña)	Datadista [10]
	Madrid	Sub-national (Madrid)	
Sweden	Stockholm	Sub-national (Stockholm)	Folkhälsomyndigheten [11]
Turkey	Istanbul	National	Johns Hopkins CSSE [1]
United Kingdom	Birmingham	Sub-national (Midlands)	Public Health England [12]
	London	Sub-national (London)	
	Manchester	Sub-national (North West)	
<b>Canada and the United States</b>			
Canada	Vancouver	Sub-national (British Columbia)	Public Health Agency of Canada [13]
	Montreal	Sub-national (Quebec)	
	Toronto	Sub-national (Ontario)	
United States	Los Angeles	County (Los Angeles, California)	New York Times [14]
	San Francisco	County (San Francisco, California)	
	Seattle	Sub-national (Washington)	
	New York City	Sub-national (New York)	
	Philadelphia	Sub-national (Pennsylvania)	
	Boston	Sub-national (Massachusetts)	
	Chicago	Sub-national (Illinois)	
	Washington DC	Sub-national (District of Columbia)	

Latin America			
<b>Mexico</b>	Mexico City	National	Johns Hopkins CSSE [1]
<b>Brazil</b>	São Paulo	Sub-national (São Paulo)	Ministério da Saúde [15]
Asia			
<b>China</b>	Hong Kong	Sub-national (Hong Kong)	Johns Hopkins CSSE [1]
<b>South Korea</b>	Seoul	Sub-national (Seoul)	Korean Centre for Disease Control and local governments (via Jihoo Kim) [16]
<b>Singapore</b>	Singapore	National	Johns Hopkins CSSE [1]
<b>Japan</b>	Tokyo	Sub-national (Tokyo)	Tokyo Metropolitan Government [17]

<sup>a</sup> Italicized geographies contain two cities in the Citymapper mobility index. We used population weighted average values for the mobility index for these geographies.

[1] Johns Hopkins CSSE: <https://github.com/CSSEGISandData/COVID-19>

[2] Bundesministerium Soziales, Gesundheit, Pflege und Konsumentenschutz: [https://covid19.spieessknafl.at/d/2fa2-Y\\_Wz222/covid-19-2](https://covid19.spieessknafl.at/d/2fa2-Y_Wz222/covid-19-2)

[3] Sciensano: [https://epistat.sciensano.be/Data/COVID19BE\\_CASES\\_AGESEX.csv](https://epistat.sciensano.be/Data/COVID19BE_CASES_AGESEX.csv)

[4] Public Health France: <https://raw.githubusercontent.com/opencovid19-fr/data/master/dist/chiffres-cles.csv>

[5] Robert Koch-Institut via Jan-Philip Gehrcke: <https://github.com/jgehrcke/covid-19-germany-gae>

[6] Presidenza del Consiglio dei Ministri - Dipartimento della Protezione Civile: <https://github.com/pcm-dpc/COVID-19>

[7] Direção-Geral da Saúde: <https://covid19.min-saude.pt/relatorio-de-situacao/>

[8] Federal Service for Surveillance on Consumer Rights Protection and Human Wellbeing and Yandex (Moscow): <https://yandex.ru/web-maps/covid19?ll=37.646921%2C55.725146&z=9;https://www.rospotrebnadzor.ru/about/info/news/>

[9] Federal Service for Surveillance on Consumer Rights Protection and Human Wellbeing and Yandex (St. Petersburg): <https://yandex.ru/web-maps/covid19?ll=30.424830%2C59.939314&z=9;https://www.rospotrebnadzor.ru/about/info/news/>

[10] Datadista: <https://github.com/datadista/datasets/tree/master/COVID%2019>

[11] Folkhälsomyndigheten: <https://experience.arcgis.com/experience/09f821667ce64bf7be6f9f87457ed9aa;https://www.folkhalsomyndigheten.se/smittskydd-beredskap/utbrott/aktuella-utbrott/covid-19/bekraftade-fall-i-sverige/>

[12] Public Health England: <https://fingertips.phe.org.uk/documents/Historic%20COVID-19%20Dashboard%20Data.xlsx>

[13] Public Health Agency of Canada: <https://health-infobase.canada.ca/src/data/covidLive/covid19.csv>

[14] New York Times: <https://github.com/nytimes/covid-19-data>

[15] Ministério da Saúde: <https://covid.saude.gov.br/>

[16] Korean Centre for Disease Control and local governments via Jihoo Kim: <https://github.com/jihoo-kim/Data-Science-for-COVID-19>

[17] Tokyo Metropolitan Government, Health and Welfare Bureau, Health and Safety Department, Infectious Disease Control Section: <https://catalog.data.metro.tokyo.lg.jp/dataset/t000010d0000000068>