

Impact of non-pharmaceutical interventions on documented cases of COVID-19

Nicolas Banholzer^a, Eva van Weenen^a, Bernhard Kratzwald^a, Arne Seeliger^a, Daniel Tschernutter^a, Pierluigi Bottrighi^a, Alberto Cenedese^a, Joan Puig Salles^a, Werner Vach^{†,b,c}, Stefan Feuerriegel^{†,a,*}

^a*Department of Management, Technology, and Economics, ETH Zurich, 8092 Zurich, Switzerland*

^b*Basel Academy, CH-4054 Basel, Switzerland*

^c*Department of Environmental Sciences, University of Basel, CH-4055 Basel, Switzerland*

Supplementary Material

A. Descriptives

A.1. Timing of non-pharmaceutical interventions

In the main paper, we report the absolute cumulative number of cases until countries have implemented non-pharmaceutical interventions (NPIs). It is our impression that the timing of the response rather depends on the absolute number of cases, especially in the early phase of the epidemic. As a comparison, Fig. 1 shows the cumulative number of cases relative to a country's population³ at the moment NPIs were implemented.

To summarize the temporal order of NPIs, Fig. 2 depicts the temporal rank at which NPIs were implemented across $n = 20$ countries. Most countries implemented event bans first, followed by school closures, gatherings bans, border closures, and venue closures. In contrast, lockdowns and work bans have never been implemented first and many countries have not even implemented these NPIs.

*Corresponding author. †These authors contributed equally.

Email addresses: nbanholzer@ethz.ch (Nicolas Banholzer), sfeuerriegel@ethz.ch (Stefan Feuerriegel[†])

³The size of the population is obtained from the World Bank Database: <https://data.worldbank.org/indicator/SP.POP.1564.T0>.

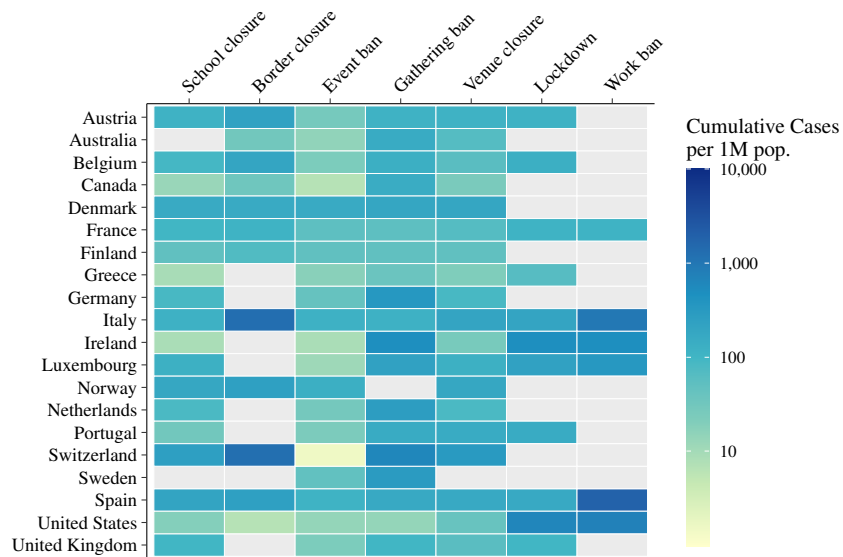


Fig. 1 Heatmap showing the cumulative number of documented COVID-19 cases relative to the population size of each country until a non-pharmaceutical intervention (NPI) is implemented. By reporting the relative cumulative number of cases, the heatmap highlights the ordering of NPIs within countries. If an NPI is not implemented by a country, it is colored gray.

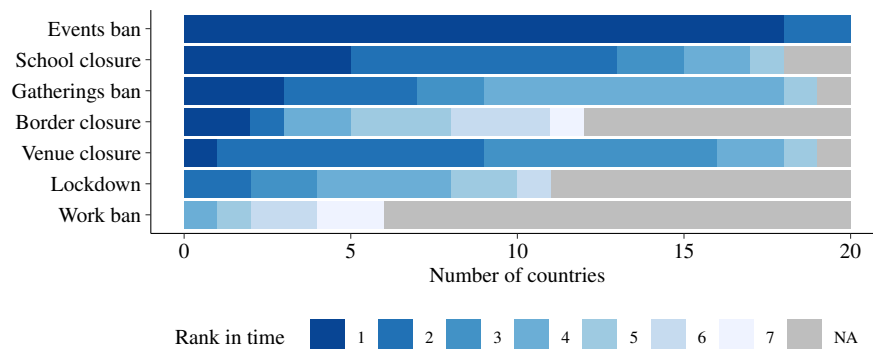


Fig. 2 Temporal order of non-pharmaceutical interventions (NPIs) by rank of implementation. Shown is the number of $n = 20$ countries for each time rank of the NPI. The ordering of NPIs is determined by the number of countries that have implemented the corresponding NPI first. Gray bars refer to the number of countries that have not implemented an NPI. In total, a rank can appear more than $n = 20$ times if a country implemented two NPIs at the same time, so that the rank is shared by the two NPIs.

A.2. Time delay between different non-pharmaceutical interventions

NPIs have been implemented at different times, where some countries have implemented more than one NPI at the same time. The latter raises concerns that it may not be possible to distinguish the individual effects of NPIs on documented COVID-19 case numbers. For that reason, we first looked at the average (Tbl. 1) and median (Tbl. 1) time delay between NPIs. Although there are NPIs that have been implemented close in time, on average, there is a certain time delay between the implementation of NPIs and, thus, it should be possible to distinguish their effects.

	School closure	Border closure	Event ban	Gathering ban	Venue closure	Lockdown	Work ban
School closure	—	4.5	3.3	4.0	1.7	5.2	10.5
Border closure	4.5	—	7.5	5.3	4.6	6.8	9.2
Event ban	3.3	7.5	—	7.5	4.1	7.6	12.5
Gathering ban	4.0	5.3	7.5	—	3.5	2.5	8.5
Venue closure	1.7	4.6	4.1	3.5	—	4.2	9.7
Lockdown	5.2	6.8	7.6	2.5	4.2	—	4.7
Work ban	10.5	9.2	12.5	8.5	9.7	4.7	—

Table 1: Mean absolute time difference (in days) between the implementation of different NPIs across $n = 20$ countries.

	School closure	Border closure	Event ban	Gathering ban	Venue closure	Lockdown	Work ban
School closure	—	3.0	2.5	2.0	2.0	2.0	14.0
Border closure	3.0	—	4.0	3.0	3.0	2.5	8.5
Event ban	4.0	—	7.0	3.0	7.0	15.0	—
Gathering ban	2.0	3.0	7.0	—	3.0	0.0	9.0
Venue closure	2.0	3.0	3.0	3.0	—	3.0	12.0
Lockdown	2.0	2.5	7.0	0.0	3.0	—	1.0
Work ban	14.0	8.5	15.0	9.0	12.0	1.0	—

Table 2: Median absolute time difference (in days) between the implementation of different NPIs across $n = 20$ countries.

A.3. Temporal development of the number of new cases by country

Fig. 3 shows the temporal development of the documented number of new cases by country and indicates the respective timing of NPIs. Weekends are marked because, for many countries, fewer new cases are documented over the weekend.

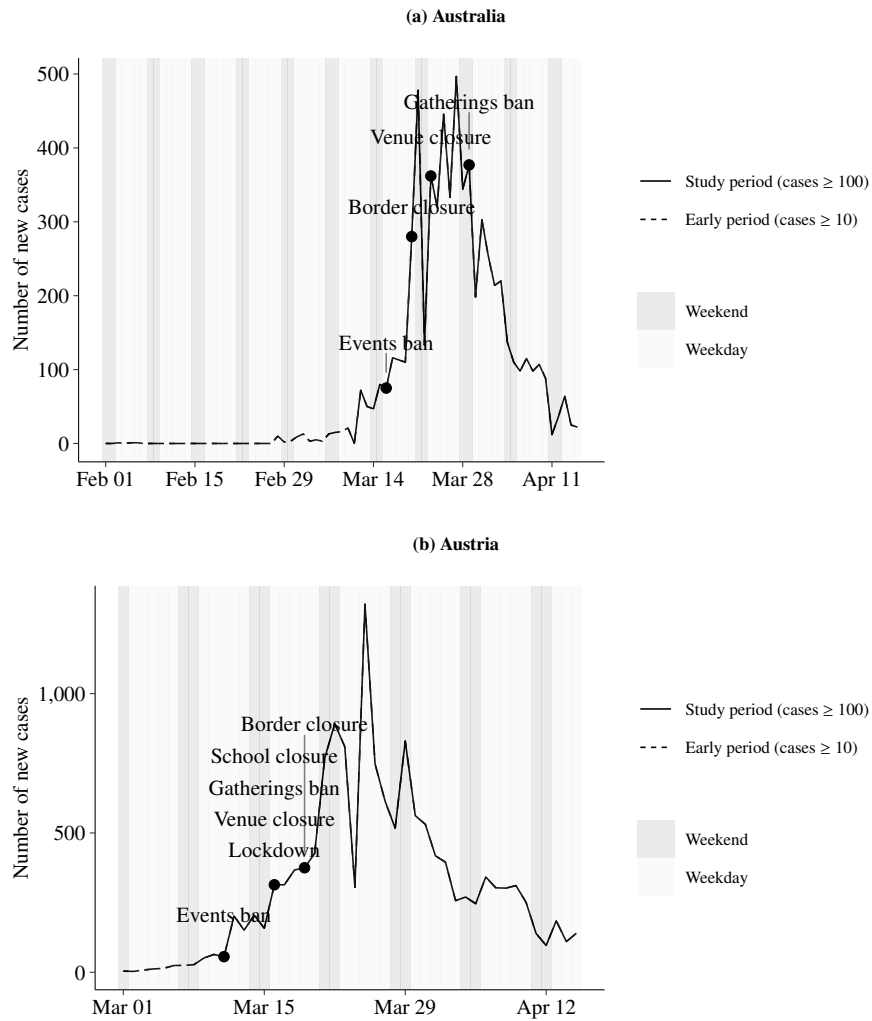


Fig. 3 Temporal development of the observed (documented) number of new cases by country ($n = 20$). The points at which non-pharmaceutical interventions (NPIs) were implemented are annotated. The solid line refers to the study period, starting from a cumulative case count of 100. To show the timing of NPIs potentially implemented before that period, the dashed line refers to the early period, starting from a cumulative case count of 10.

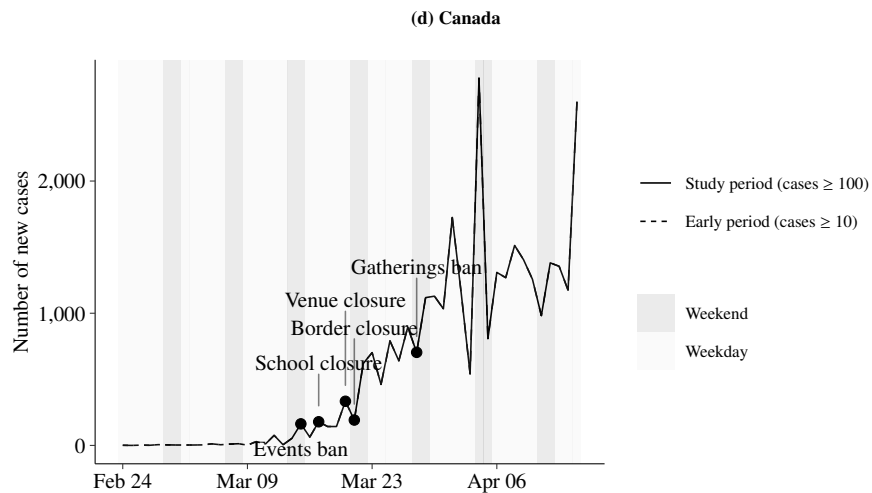
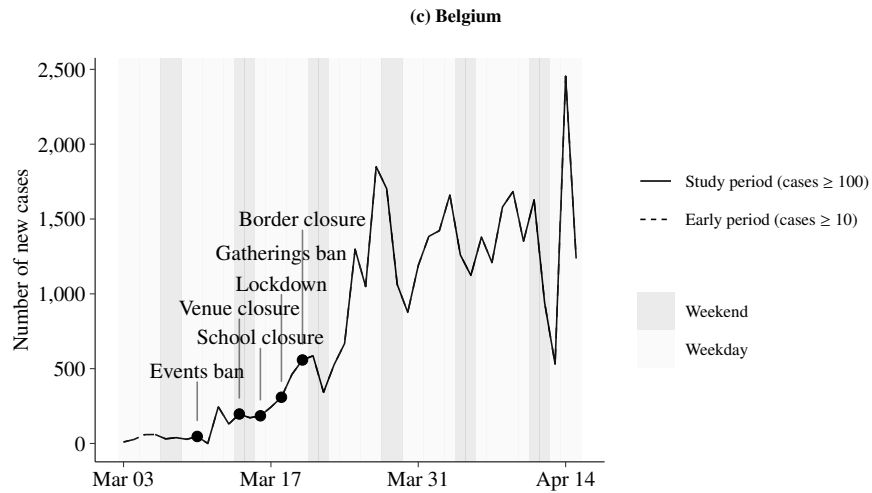


Fig. 3 Temporal development of the observed (documented) number of new cases by country ($n = 20$). The points at which non-pharmaceutical interventions (NPIs) were implemented are annotated. The solid line refers to the study period, starting from a cumulative case count of 100. To show the timing of NPIs potentially implemented before that period, the dashed line refers to the early period, starting from a cumulative case count of 10.

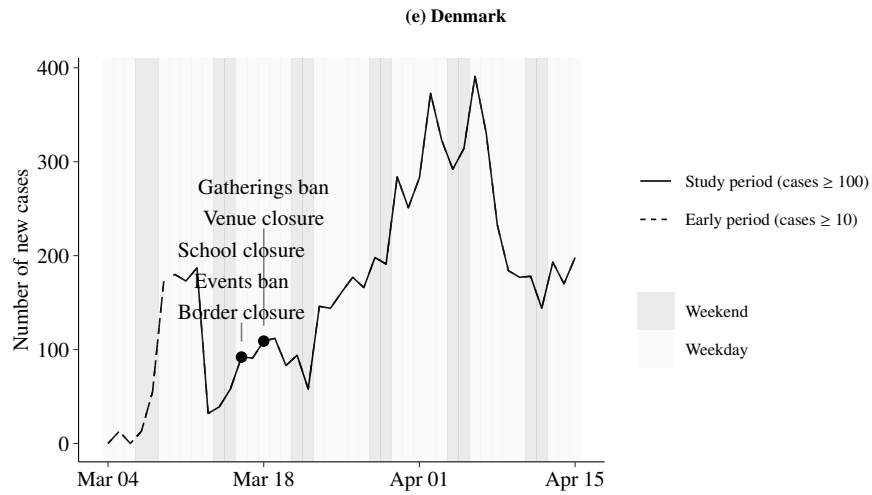


Fig. 3 Temporal development of the observed (documented) number of new cases by country ($n = 20$). The points at which non-pharmaceutical interventions (NPIs) were implemented are annotated. The solid line refers to the study period, starting from a cumulative case count of 100. To show the timing of NPIs potentially implemented before that period, the dashed line refers to the early period, starting from a cumulative case count of 10.

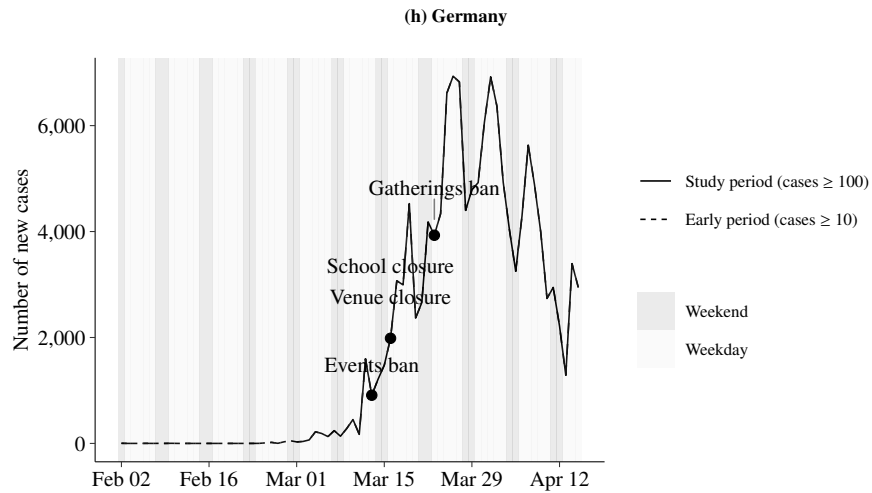
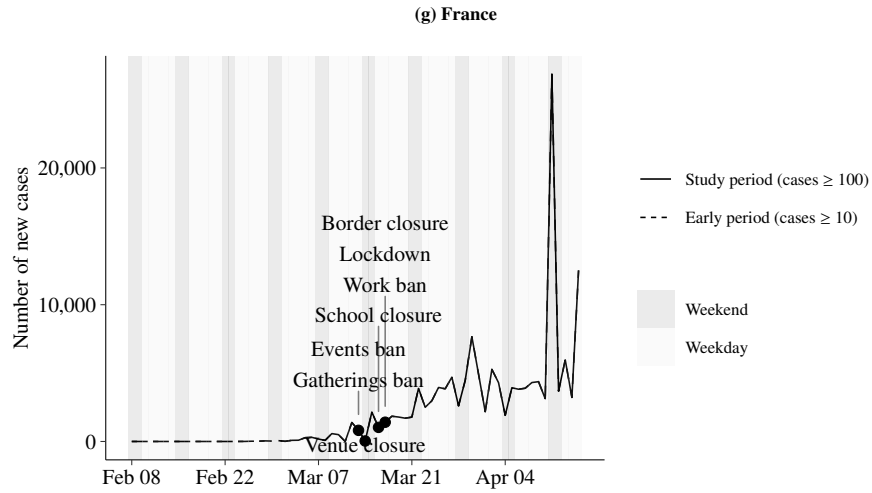


Fig. 3 Temporal development of the observed (documented) number of new cases by country ($n = 20$). The points at which non-pharmaceutical interventions (NPIs) were implemented are annotated. The solid line refers to the study period, starting from a cumulative case count of 100. To show the timing of NPIs potentially implemented before that period, the dashed line refers to the early period, starting from a cumulative case count of 10.

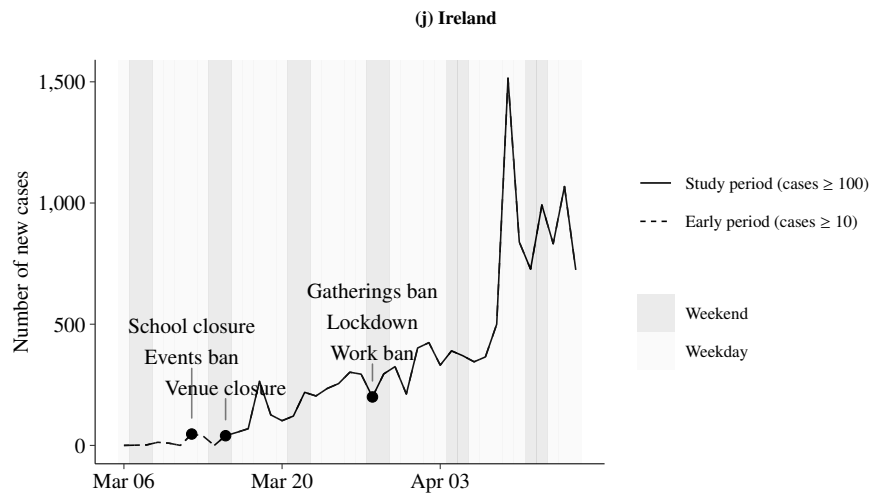
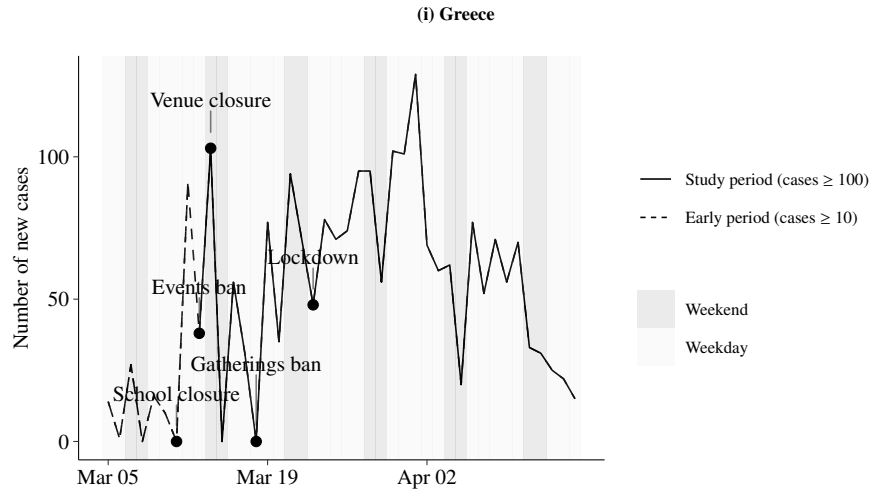


Fig. 3 Temporal development of the observed (documented) number of new cases by country ($n = 20$). The points at which non-pharmaceutical interventions (NPIs) were implemented are annotated. The solid line refers to the study period, starting from a cumulative case count of 100. To show the timing of NPIs potentially implemented before that period, the dashed line refers to the early period, starting from a cumulative case count of 10.

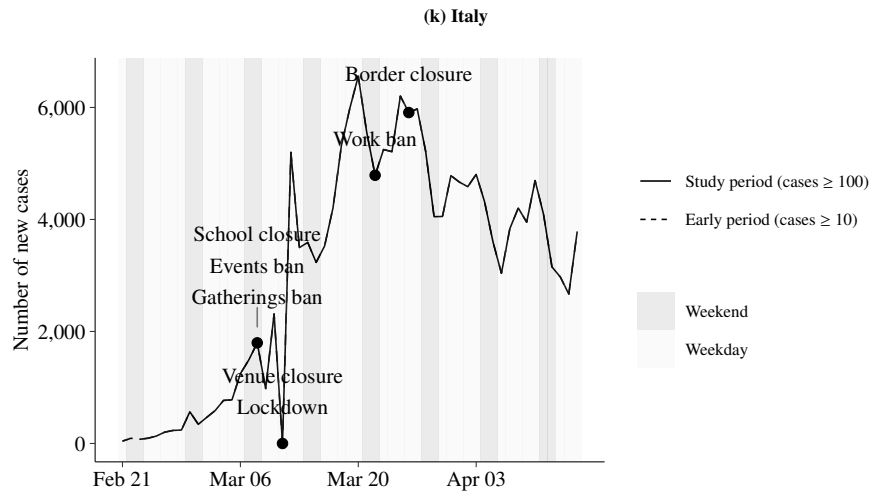


Fig. 3 Temporal development of the observed (documented) number of new cases by country ($n = 20$). The points at which non-pharmaceutical interventions (NPIs) were implemented are annotated. The solid line refers to the study period, starting from a cumulative case count of 100. To show the timing of NPIs potentially implemented before that period, the dashed line refers to the early period, starting from a cumulative case count of 10.

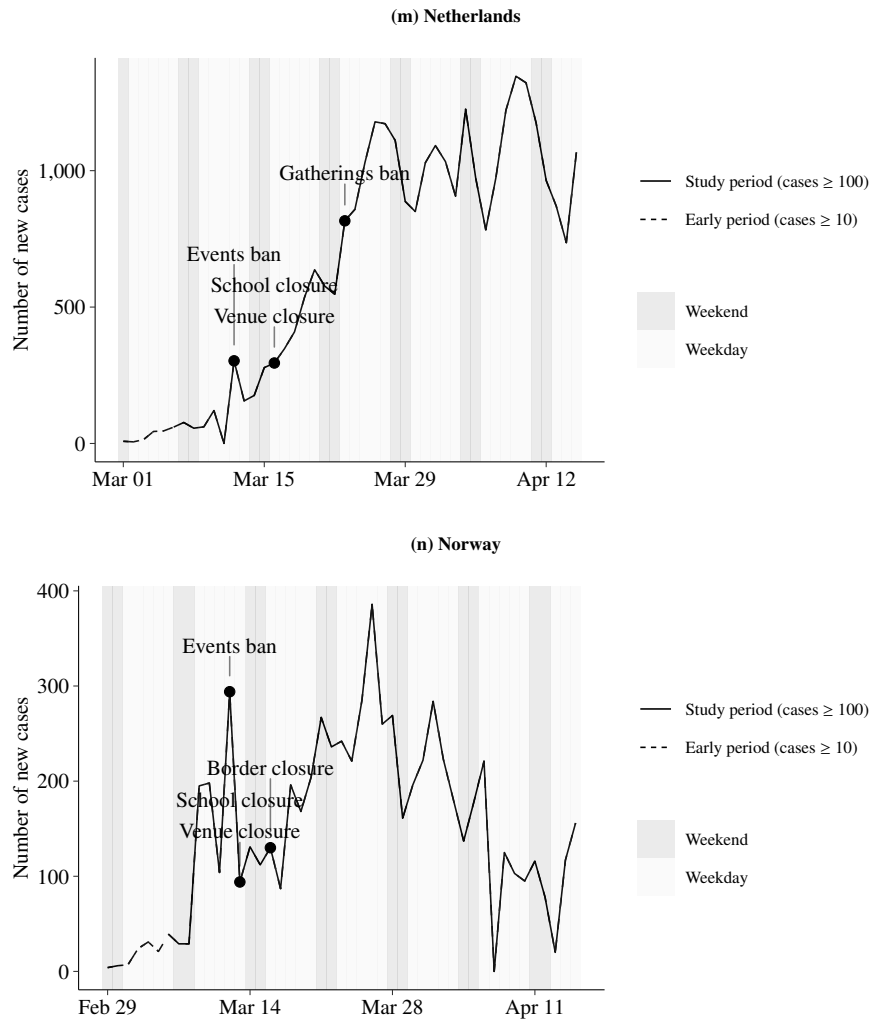


Fig. 3 Temporal development of the observed (documented) number of new cases by country ($n = 20$). The points at which non-pharmaceutical interventions (NPIs) were implemented are annotated. The solid line refers to the study period, starting from a cumulative case count of 100. To show the timing of NPIs potentially implemented before that period, the dashed line refers to the early period, starting from a cumulative case count of 10.

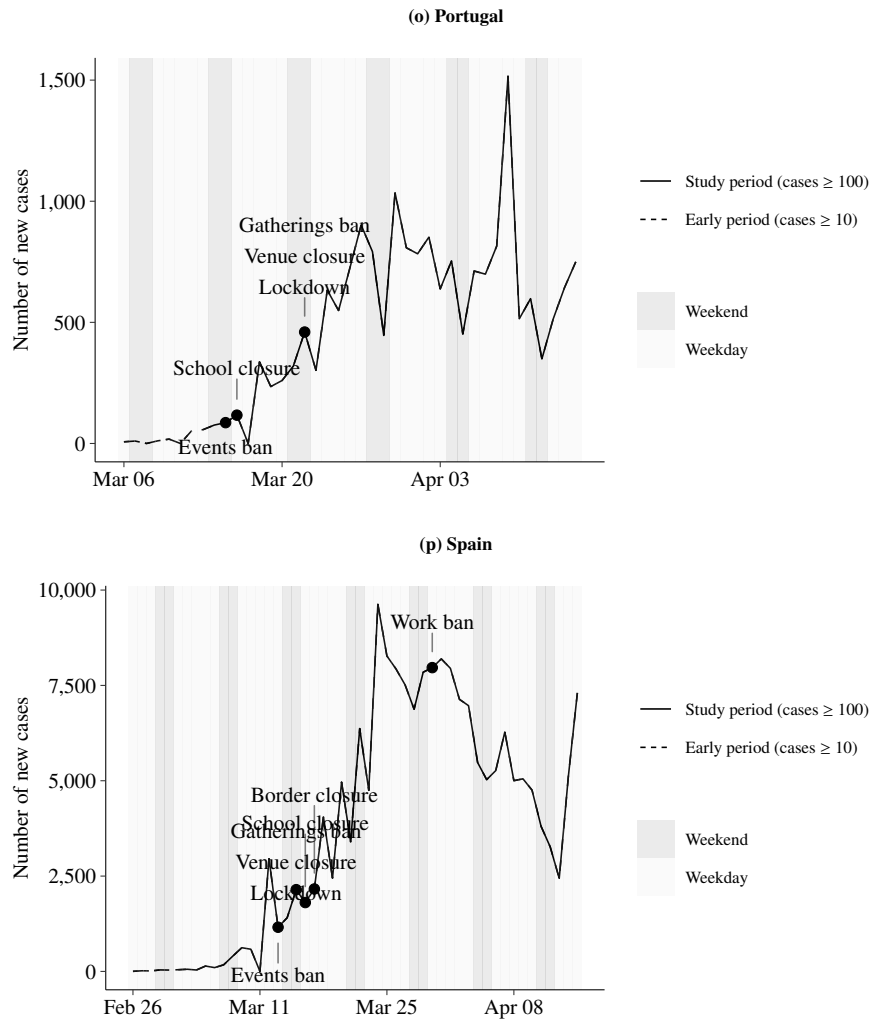


Fig. 3 Temporal development of the observed (documented) number of new cases by country ($n = 20$). The points at which non-pharmaceutical interventions (NPIs) were implemented are annotated. The solid line refers to the study period, starting from a cumulative case count of 100. To show the timing of NPIs potentially implemented before that period, the dashed line refers to the early period, starting from a cumulative case count of 10.

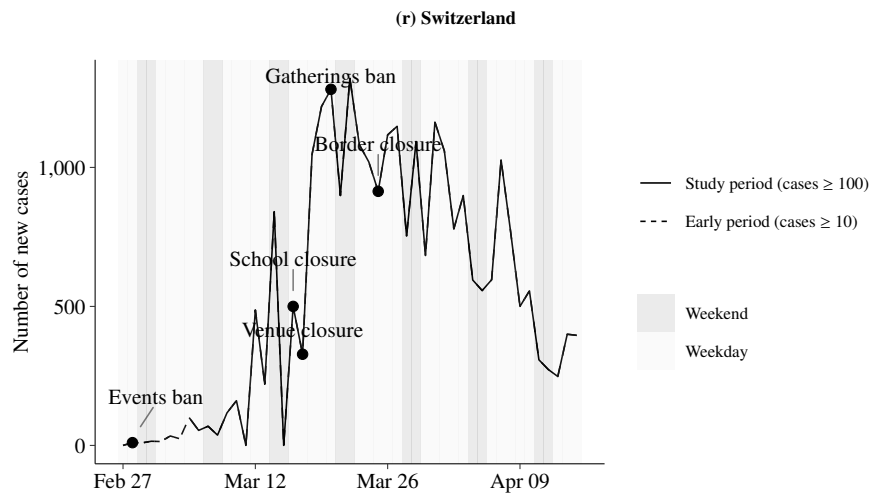
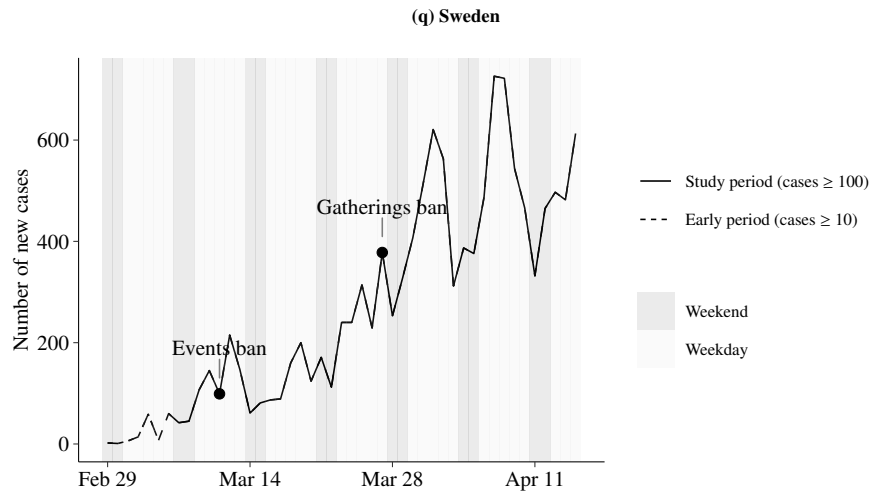


Fig. 3 Temporal development of the observed (documented) number of new cases by country ($n = 20$). The points at which non-pharmaceutical interventions (NPIs) were implemented are annotated. The solid line refers to the study period, starting from a cumulative case count of 100. To show the timing of NPIs potentially implemented before that period, the dashed line refers to the early period, starting from a cumulative case count of 10.

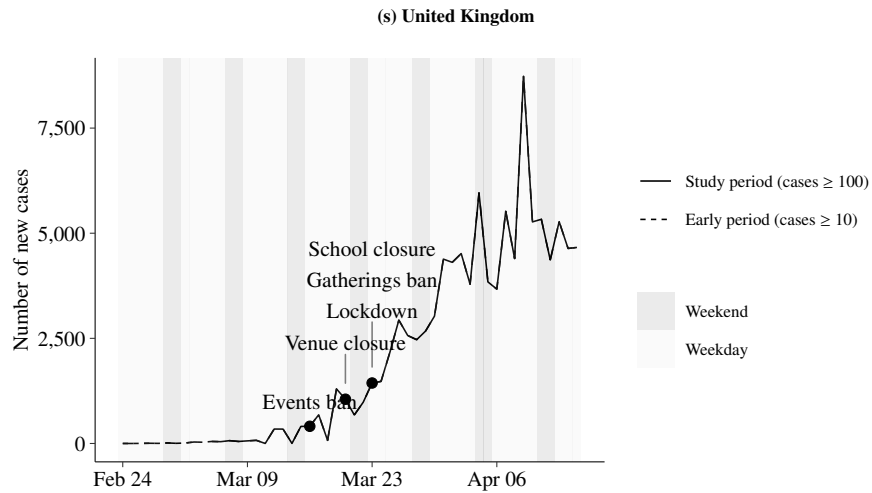


Fig. 3 Temporal development of the observed (documented) number of new cases by country ($n = 20$). The points at which non-pharmaceutical interventions (NPIs) were implemented are annotated. The solid line refers to the study period, starting from a cumulative case count of 100. To show the timing of NPIs potentially implemented before that period, the dashed line refers to the early period, starting from a cumulative case count of 10.

B. Model specification

Let $C_{r,d}$ denote the number of documented cases in country r at day d . Then $N_{r,d} = C_{r,d+1} - C_{r,d}$ refers to the number of new cases in country r from day d to the next day $d + 1$. We model the number of new cases to follow a negative binomial distribution (NB), i.e.,

$$N_{r,d} \sim \text{NB}(\mu_{r,d}, \sigma_{r,d}^2) \quad (1)$$

with mean $\mu_{r,d}$, variance $\sigma_{r,d}^2 = \mu_{r,d} (1 + \frac{\mu_{r,d}}{\phi})$, and an overdispersion parameter ϕ . The mean is related to the log of the expected rate of new cases, $\eta_{r,d} := \log E\left(\frac{N_{r,d}}{C_{r,d}}\right)$, via

$$\mu_{r,d} = C_{r,d} \exp(\eta_{r,d}), \quad \text{i.e.,} \quad \log \mu_{r,d} = \log C_{r,d} + \eta_{r,d} \quad (2)$$

The log-rate is related to the NPIs, the day of the week, and the country via

$$\eta_{r,d} = \alpha_r + \gamma_{w(d)} + \sum_{m=1}^M f_{\theta_m}(T_{r,d}^m) \quad (3)$$

Here α_r is a country-specific effect reflecting the growth in the number of cases for country r in the absence of any NPI, $\gamma_{w(d)}$ are dummies for each day of the week, f_{θ_m} is a time-delayed response function, and $T_{r,d}^m$ is the number of days since measure (NPI) m took effect in country r .

We model the time-delayed response function via a step function

$$f_{\theta_m}(t) = \begin{cases} 0, & \text{if } t < t_0, \\ \theta_m, & \text{if } t \geq t_0, \end{cases} \quad (4)$$

so that NPIs can only influence new cases with a delay of t_0 . We set $t_0 = 7$ days, as detailed above. Both the choice of the influence function and the time delay are varied as part of the sensitivity analysis.

C. Parameter estimation

The model parameters are estimated with a Bayesian approach. Specifically, Markov chain Monte Carlo (MCMC) sampling is used as implemented by the Hamiltonian Monte Carlo algorithm with the No-U-Turn Sampler (NUTS) from Stan 2.19.2¹. If not stated otherwise, we report posterior means and credible intervals based on the 2.5% and 97.5% quantile of the posterior samples.

Each model is estimated with 4 Markov chains and 2,000 iterations of which the first 1,000 iterations are discarded as part of the warm-up. Estimation power is evaluated via the ratio of the effective sample size (\hat{n}_{eff}/N), and convergence of the Markov chains is assessed with the Gelman-Rubin convergence (\hat{R}). Further checks pertain to the detection of influential observations and correlations between the parameters of interest.

During estimation, a combination of informative and weakly informative priors is used, except for the effect of NPIs which are restricted to be non-positive based on the assumption that NPIs cannot increase the number of new cases. Prior choices are mostly informed by prior choice recommendations from the Stan Development Team².

Effect	Parameter	Prior
Fixed intercept	α	Student-t ($\nu = 7, \mu = 0, \sigma = 10$)
Varying intercept	α_r	Normal($0, \sigma_\alpha$)
	σ_α	Student-t ⁺ ($\nu = 4, \mu = 0, \sigma = 1$)
Weekday	γ_w	Student-t ($\nu = 7, \mu = 0, \sigma = 2.5$)
NPIs	θ_m	Student-t ⁻ ($\nu = 7, \mu = 0, \sigma = 2.5$)
Overdispersion	ϕ	$\phi = (\frac{1}{\xi})^2$, where $\xi \sim \text{Normal}^+(\mu = 0, \sigma = 1)$

Table 3: Prior choices for model parameters.

D. Estimation results

D.1. Estimated model parameters

Tbl. 4 presents posterior means and credible intervals for all model parameters. See the main paper for a discussion of the effects of NPIs. Here we discuss some of the additional model parameters.

The ratio of the effective sample size (\hat{n}_{eff}/N) and the Gelman-Rubin convergence diagnostic (\hat{R}) indicates good estimation power. It further suggests that the Markov chains converged.

There is a country-specific variation in the intercept parameter (α_r), reflecting differences in the rate of new cases – i.e., spread of the disease – in the absence of any NPI. Sweden is among the countries with lowest estimated rate and the US and France among the countries with highest estimated rate. This coincides well with the different observed severity of the epidemic in these countries.

The estimated weekday effects are relative to Monday. More cases are documented during the week, especially on Thursday. There is a strong weekend effect as indicated by the negative sign of the estimate for Saturday and Sunday.

The overdispersion parameter (ϕ) can be rather precisely estimated to be in the magnitude of 2, i.e. we are far away from the case of no overdispersion ($\phi = \infty$). This coincides with the empirical observation of rather unsmooth trajectories in each country (Section A.3).

		Mean	Lower CrI	Upper CrI	\hat{n}_{eff}/N	\hat{R}
α	Intercept	-1.32	-1.53	-1.09	0.19	1.00
α_1	Australia	-0.46	-0.74	-0.19	0.38	1.00
α_2	Austria	-0.03	-0.28	0.23	0.37	1.00
α_3	Belgium	0.28	0.03	0.53	0.31	1.00
α_4	Canada	0.25	-0.01	0.52	0.40	1.00
α_5	Denmark	-0.09	-0.35	0.18	0.36	1.00
α_6	Finland	-0.01	-0.27	0.26	0.40	1.00
α_7	France	0.52	0.26	0.80	0.34	1.00
α_8	Germany	-0.14	-0.39	0.10	0.35	1.00
α_9	Greece	-0.42	-0.70	-0.15	0.44	1.00
α_{10}	Ireland	0.27	-0.01	0.56	0.41	1.00
α_{11}	Italy	-0.02	-0.26	0.23	0.34	1.00
α_{12}	Luxembourg	0.07	-0.23	0.37	0.45	1.00
α_{13}	Netherlands	-0.14	-0.39	0.11	0.35	1.00
α_{14}	Norway	-0.38	-0.66	-0.11	0.38	1.00
α_{15}	Portugal	0.02	-0.25	0.29	0.37	1.00
α_{16}	Spain	0.30	0.05	0.55	0.32	1.00
α_{17}	Sweden	-0.49	-0.75	-0.22	0.36	1.00
α_{18}	Switzerland	-0.12	-0.37	0.15	0.41	1.00
α_{19}	United Kingdom	0.06	-0.19	0.30	0.36	1.00
α_{20}	United States	0.53	0.28	0.80	0.31	1.00
σ_α	Country SD	0.34	0.23	0.49	0.55	1.00
γ_1	Tuesday	-0.01	-0.19	0.17	0.36	1.00
γ_2	Wednesday	0.01	-0.17	0.20	0.34	1.00
γ_3	Thursday	0.30	0.12	0.49	0.43	1.00
γ_4	Friday	0.09	-0.10	0.27	0.37	1.00
γ_5	Saturday	-0.03	-0.21	0.15	0.38	1.00
γ_6	Sunday	-0.16	-0.35	0.02	0.35	1.00
θ_1	School closure	-0.09	-0.26	0.00	0.83	1.00
θ_2	Border closure	-0.38	-0.54	-0.21	0.53	1.00
θ_3	Event ban	-0.26	-0.43	-0.09	0.82	1.00
θ_4	Gathering ban	-0.42	-0.60	-0.23	0.65	1.00
θ_5	Venue closure	-0.44	-0.66	-0.22	0.61	1.00
θ_6	Lockdown	-0.05	-0.16	0.00	0.91	1.00
θ_7	Work ban	-0.38	-0.58	-0.17	0.74	1.00
ϕ	Overdispersion	2.09	1.88	2.29	1.18	1.00

Table 4: Estimation results for the main analysis. The ratio \hat{n}_{eff}/N is the effective sample size (\hat{n}_{eff}) divided by the total sample size (N). Generally, ratios above 0.5 correspond to high, between 0.1 and 0.5 to medium and below 0.1 to low estimation power³. \hat{R} is the Gelman-Rubin convergence diagnostic⁴. Generally, good convergence is indicated by \hat{R} being close to 1.00, while bad convergence is indicated by values above 1.10⁵.

D.2. Checking for correlations between parameters

A similar timing could make it difficult to distinguish the individual effects of NPIs. To investigate this issue, Fig. 4 depicts the pairwise bivariate posterior distributions of the parameters of the NPIs. We observe a tendency towards negative correlations, reflecting the difficulty to distinguish the effects of two NPIs if they are often introduced close in time. In particular, it seems to be somewhat difficult to distinguish between the effects of gathering bans and venue closures ($r = -0.40$), which were often implemented close in time (see Tbl. 1-2). In contrast, there seems to be no problem in distinguishing the effects of venue closures and work bans ($r = -0.02$), which were on average relatively far away.

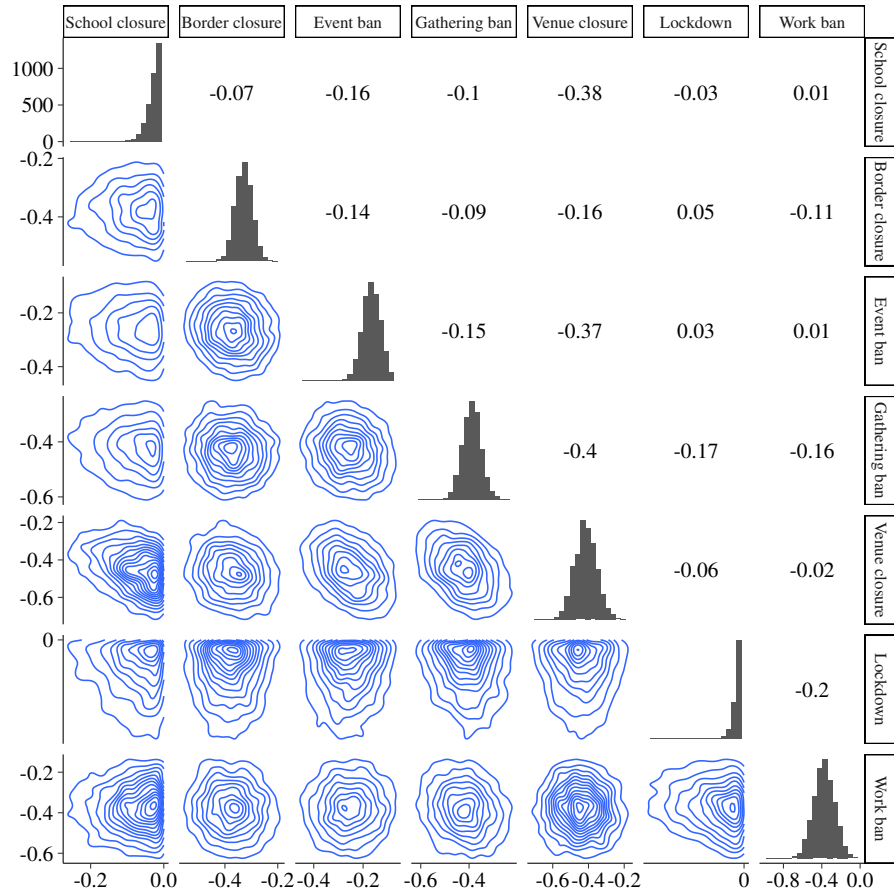


Fig. 4 Bivariate posterior distributions visualized by contour plots (lower diagonal matrix) from the MCMC sample for the parameters of non-pharmaceutical interventions (NPIs). Pearson's r is shown in the upper diagonal matrix, and the marginal distribution is depicted as a histogram on the diagonal of the matrix.

D.3. Checking for influential observations

Influential observations can affect parameter estimates. To check for influential observations, Fig. 5 shows the tail shape parameter k from approximate leave-one-out (LOO) cross-validation using Pareto smoothed importance sampling⁶. None of our observations seem to be highly influential.

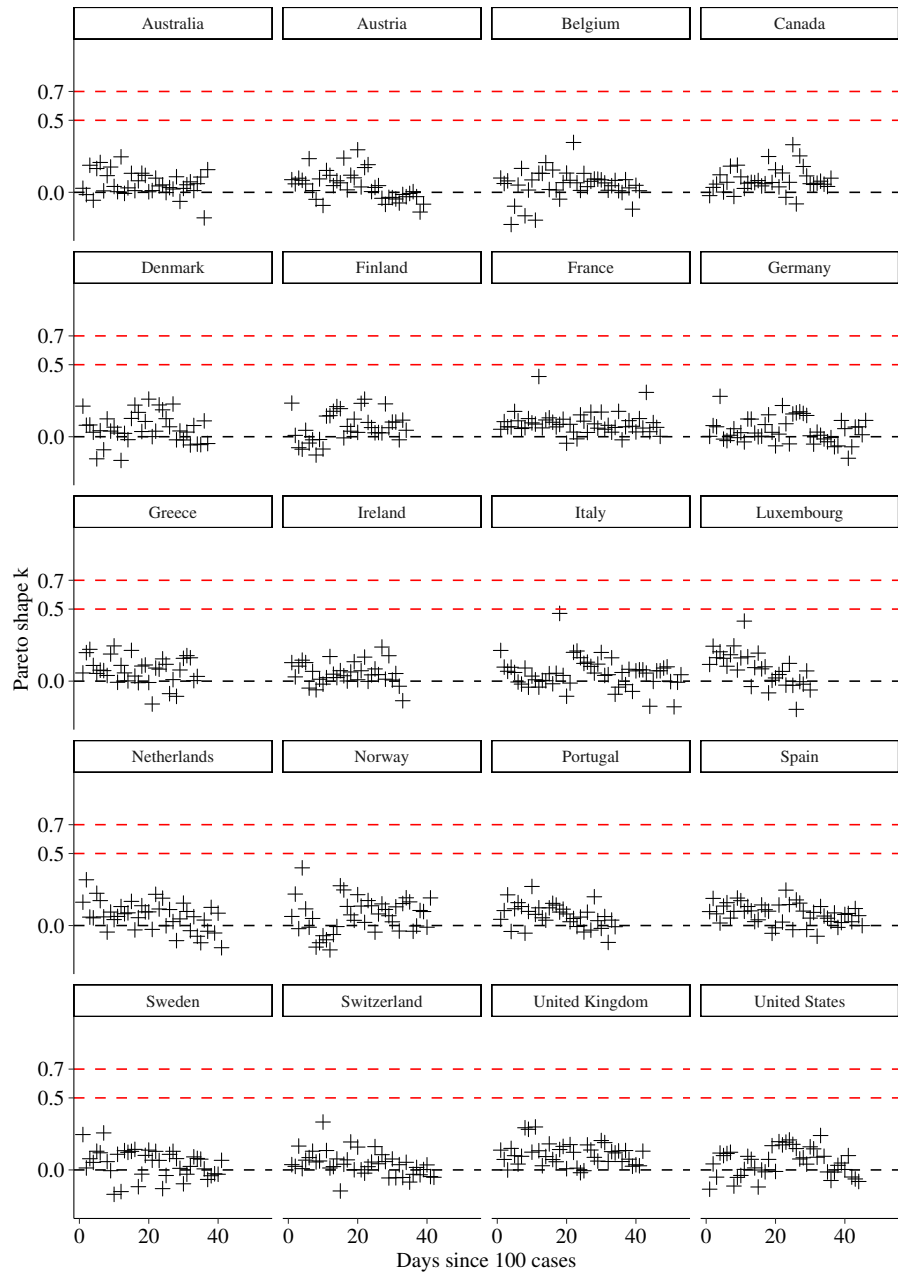


Fig. 5 Model diagnostics based on influential observations. Shown is the tail shape parameter k of the generalized Pareto distribution from approximate leave-one-out (LOO) cross-validation using Pareto smoothed importance sampling for each observation by country and time. Values below 0.5 indicate that the observation is not influential; values between 0.5 and 0.7 indicate that the observation might be influential but the model is usually still robust; values above 0.7 indicate the observation is influential and that the model may not be robust⁶.

E. Sensitivity analysis

The sensitivity of our results is analyzed as follows. (1) The preprocessing is changed such that we start our analysis from a cumulative case number of 10 (Section E.1). (2) The time delay with which NPIs can affect the rate of new cases is varied. Here we repeat the analysis with a delay (i.e., a lag) of $t_0 = 5$ days and $t_0 = 9$ days (Section E.2). (3) Also considered is the case whereby NPIs only become gradually effective. Specifically, the effect of NPIs is modeled with a first-order spline, where NPIs have a linearly increasing effect between t_0 and t_1 , and a constant effect after t_1 (Section E.3). (4) The assumption that NPIs can only reduce the number of new cases is relaxed. That is, the effect is unbounded and NPIs can lead to a potential increase in the number of new cases (Section E.4).

E.1. Analysis starting with data from 10 cases onward

In our main analysis, we excluded observations with fewer than 100 cumulative cases. The reason is that countries needed time to set up their documentation practices. Fig. 6 compares the estimates for NPIs from our main analysis with estimates from the same model where only observations with fewer than 10 cases were excluded. Overall, estimated posterior means for all NPIs remain fairly similar. The relative effectiveness changes slightly, with border closures and work bans becoming on average less effective than event bans.

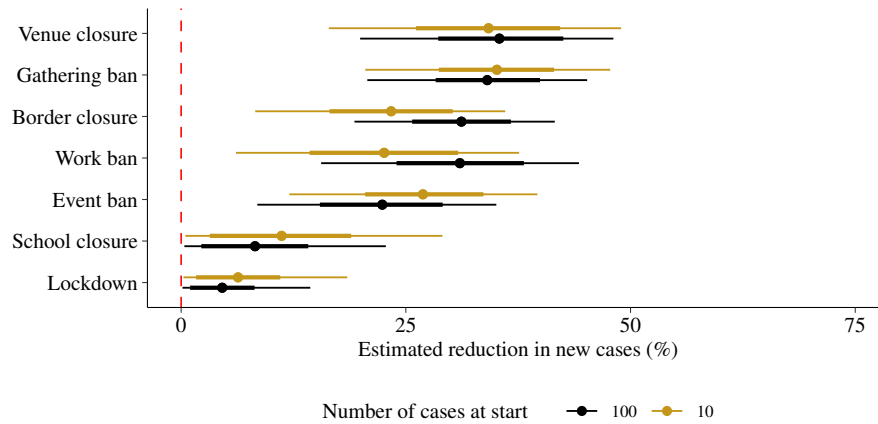


Fig. 6 Estimated reduction (posterior mean as dots with 80% and 95% credible interval as thick and thin lines, respectively) in the number of new cases (in %) for each non-pharmaceutical intervention (NPI) by varying the number of cases at start. Compared are 100 (main analysis) and 10 cases at the start of the analysis.

E.2. Comparison of other time delays t_0 after which NPIs become effective

In our main analysis, we assumed a time delay of $t_0 = 7$ days between the moment when an NPI becomes effective and the moment when it can influence the rate of new cases. To check sensitivity w.r.t. this choice, we repeat the analysis with a time delay of $t_0 = 5$ days and $t_0 = 9$ days. The estimation results are detailed in Fig. 7, confirming that, overall, the effects remain qualitatively similar. The effects of work and gathering bans are reduced for a longer time delay, while the effect of event bans is increased.

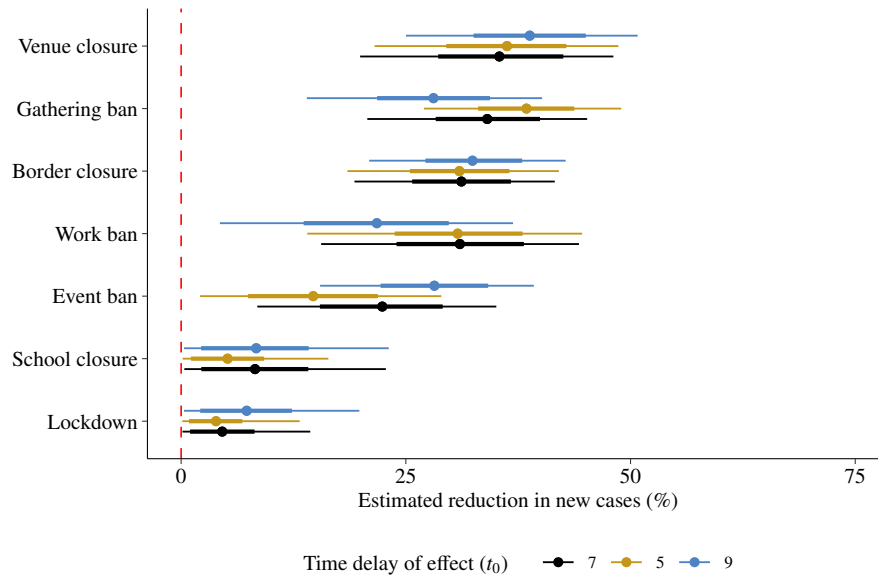


Fig. 7 Estimated reduction (posterior mean as dots with 80% and 95% credible interval as thick and thin lines, respectively) in the number of new cases (in %) for each non-pharmaceutical intervention (NPI) by varying the time delay of effects (t_0). Compared are 7 (main analysis), 5, and 9 days of delay until NPIs are assumed to have an effect.

E.3. Comparison of influence functions

In our main analysis, we assumed a constant effectiveness for each NPI after a time delay of $t_0 = 7$ days. We now consider the case where NPIs become gradually effective. Specifically, we consider an alternative influence function, i.e., a first-order spline. Here the NPI has a linearly increasing effect between day $t_0 = 5$ and $t_1 = 12$, followed by a constant effect after day $t_1 = 12$. The resulting specification of the influence function is

$$f_{\theta}^{FOS}(t) = \begin{cases} 0, & \text{if } t \leq t_0, \\ \theta \left(\frac{t-t_0}{t_1-t_0} \right), & \text{if } t_0 \leq t \leq t_1, \\ \theta, & \text{if } t > t_1. \end{cases} \quad (5)$$

Overall, Fig. 8 shows that the parameter estimates for the NPIs remain qualitatively similar. The effect of venue closures is increased, while the effect of work bans is reduced.

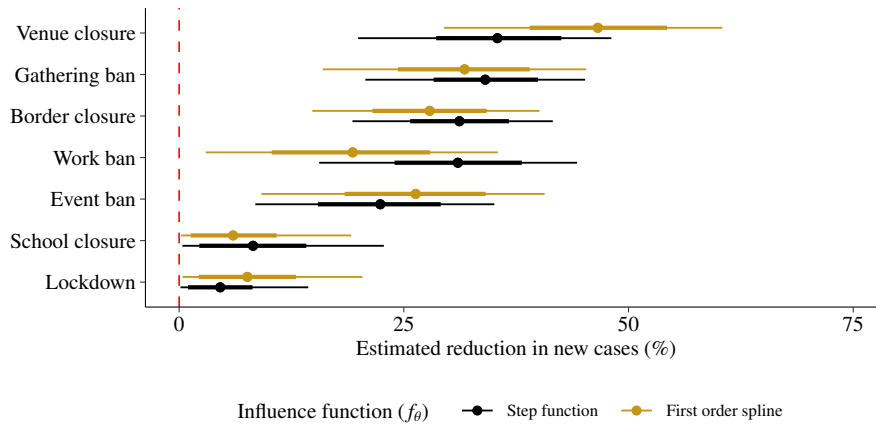


Fig. 8 Estimated reduction (posterior mean as dots with 80% and 95% credible interval as thick and thin lines, respectively) in the number of new cases (in %) for each non-pharmaceutical intervention (NPI) by influence function (f_{θ}). Compared is a step function with a constant effect after a delay of $t_0 = 7$ days (main analysis) and a first-order spline with a linearly increasing effect between day $t_0 = 5$ and $t_1 = 12$, followed by a constant effect after day $t_1 = 12$.

E.4. Relaxing the assumption that non-pharmaceutical interventions cannot increase the number of new cases

In our main analysis, we assumed that the effect of NPIs is non-positive and their implementation will not lead to an increase in the number of new cases (i.e., θ_m has an upper bound at 0). Now, this assumption is relaxed by allowing NPIs to increase the number of new cases (i.e., θ_m is unbounded). In Fig. 9, the estimates between the bounded and unbounded specification of our model are compared. NPIs that lead to a clear reduction in the bounded model also lead to a reduction in the unbounded model and the effect sizes are almost equal. Thus, overall, the relative ranking among NPIs appears similar. For school closures and lockdowns, the range of credible effects is large and includes positive or even negative effects.

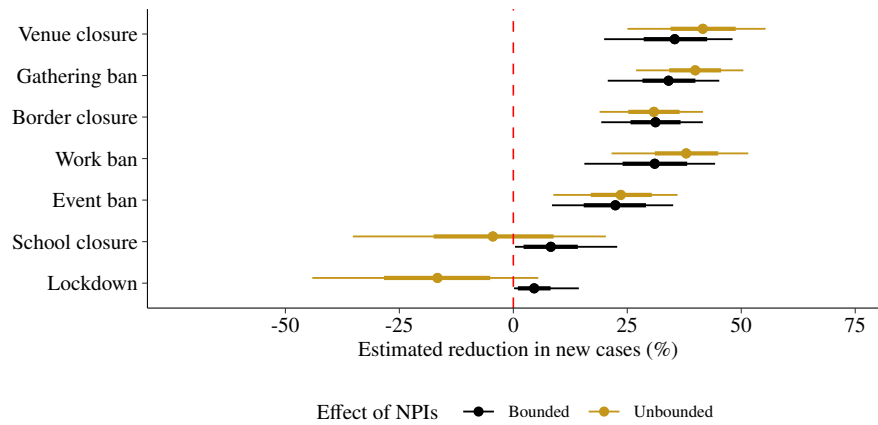


Fig. 9 Estimated reduction (posterior mean as dots with 80% and 95% credible interval as thick and thin lines, respectively) in the number of new cases (in %) for each non-pharmaceutical intervention (NPI) for the two cases where the parameters θ_m were bounded to have non-positive effects so that NPIs can only reduce the number of new cases (main analysis), or unbounded to have all possible effects, i.e., including a possible increase in the number of new cases.

F. Model comparison

The sensitivity analyses of Section E involve several variants of the model used in the main analysis while keeping the number of parameters and the data used fixed. It is hence of interest to perform a formal comparison. Based on the so-called ELPD (a metric for model comparison in Bayesian analysis⁶), a first-order spline and a delay of $t_0 = 9$ days are favored (see Tbl. 5).

Influence function (f_θ)	Time delay (t_0, t_1)	ELPD	SE	Δ ELPD	Δ SE
First order spline	$t_0 = 5, t_1 = 12$	-5728.43	49.90	0.00	0.00
Step function	$t_0 = 9$	-5751.56	49.40	-23.13	4.11
Step function	$t_0 = 7$	-5767.20	48.96	-38.77	6.48
Step function	$t_0 = 5$	-5791.65	48.74	-63.22	10.96

Table 5: Model comparison regarding influence function and time delay based on leave-one-out cross-validated expected log pointwise predictive density, ELPD for short⁶. SE is the standard error of the ELPD, Δ ELPD is the absolute difference in the ELPD between the first and all other models, and Δ SE is the standard error in the difference.

G. Number of new cases if non-pharmaceutical interventions would not have been implemented

We illustrate the effectiveness of non-pharmaceutical interventions (NPIs) on the number of new COVID-19 cases. For this purpose, we take the mean estimate of the corresponding NPI and predict the number of new cases if the NPI would not have been implemented. Formally, the predicted number of new cases without NPI m' is computed as

$$\eta_{r,d}^{-m'} = \alpha_r + \gamma_{w(d)} + \sum_{m \neq m'}^M \theta_m(T_{r,d}^m), \quad (6)$$

$$\mu_{r,d}^{-m'} = C_{r,d} \exp(\eta_{r,d}^{-m'}), \quad (7)$$

where $\mu_{r,d}^{-m'}$ is the average number of new cases without measure m' and $C_{r,d}$ is the documented cumulative number of cases (starting from 100 cases). Note that this is contrary to a counterfactual analysis where the cumulative number of cases would need to be updated based on the predicted number of new cases. Instead, we chose the observed cumulative number of cases in each step to illustrate model fit and effectiveness of NPIs.

Fig. 10 shows the hypothetical predictions for all countries, thereby illustrating the estimated effectiveness of NPIs by our model. Overall, this exercise demonstrates that countries have potentially averted a large number of cases by implementing NPIs. More effective NPIs, e.g., venue closures, exhibit a higher relative reduction. But also less effective NPIs, e.g., event bans, can accumulate to a large overall effect when they are implemented early.

To assess the model fit, Fig. 10 also compares the estimated number of new cases (when the country implemented all its NPIs) to the observed (documented) number of new cases. For most countries, our model fits the observed number of cases reasonably well when considering that, for some countries, the observed time series is subject to variability. By specification, our model is not designed to fit this strong variability as it only adapts to country-specific differences in the constant background rate, weekday effects, and common effects from the implementation of NPIs. As a result, our model does not overfit to noise and the time series of the estimated number of new cases appear more steady.

In some countries, for instance Australia, Austria, and Germany, we observe that the actual documented number of cases is lower than the prediction of our model towards the end of the study period. These countries seem to have been more effective in reducing transmission rates than predicted by our model. This may point to country-specific, synergistic effects across different NPIs, suggesting a larger impact than implied by our estimates.

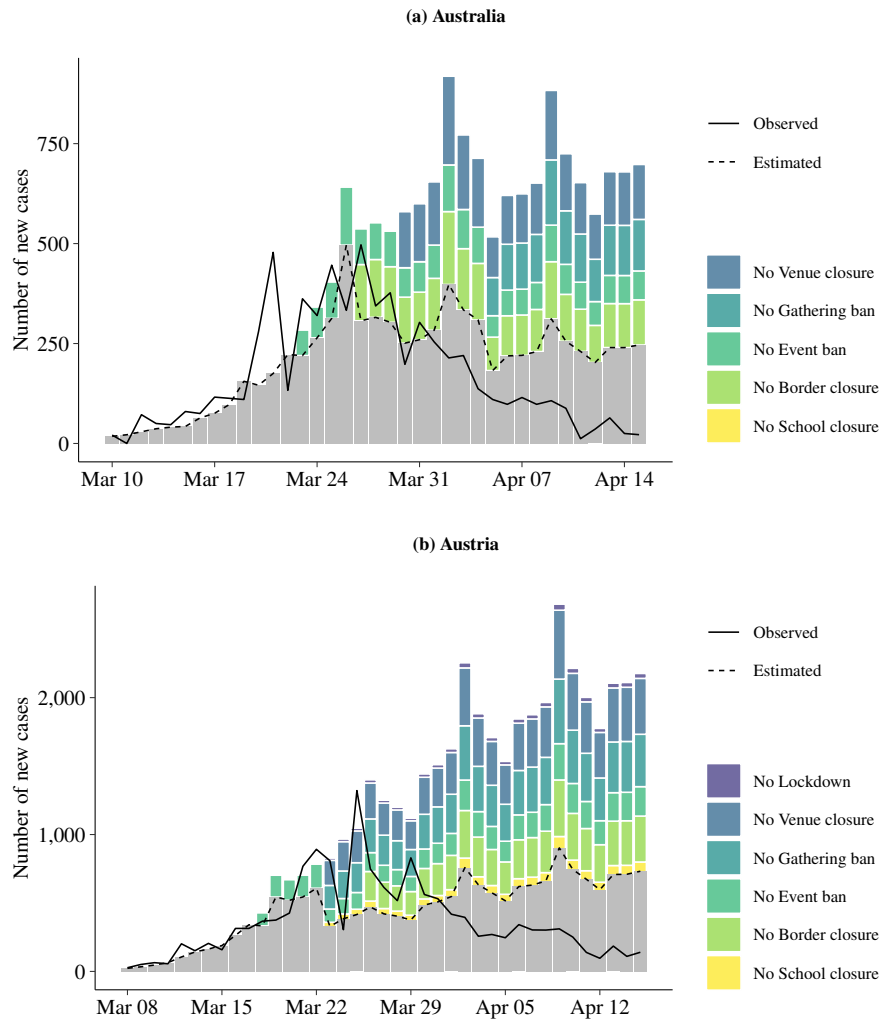


Fig. 10 Hypothetical number of daily new cases if non-pharmaceutical interventions (NPIs) were not implemented. The stacked bars illustrate how the mean estimated number of new cases would have changed if NPIs were *not* enforced. The solid line refers to the observed (documented) and the dashed line to the estimated number of new cases. The NPIs are shown for the time period in which they were implemented while considering that their effect is subject to a time delay of 7 days.

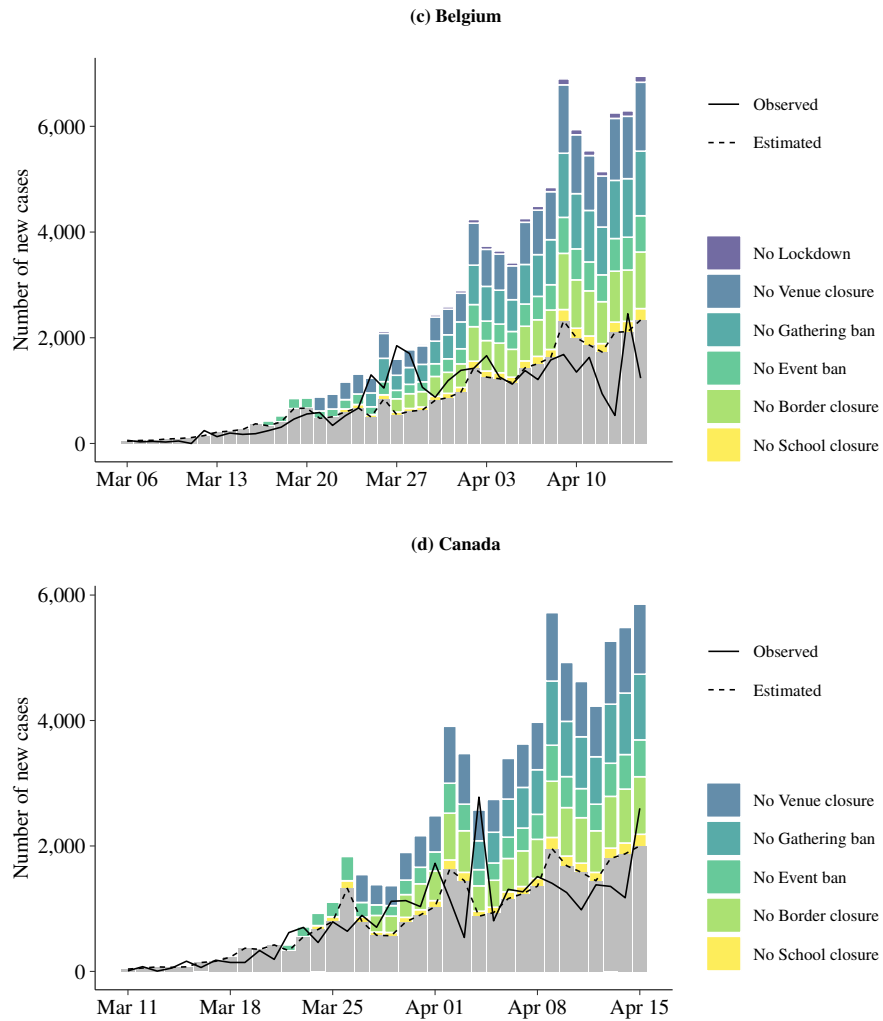


Fig. 10 Hypothetical number of daily new cases if non-pharmaceutical interventions (NPIs) were not implemented. The stacked bars illustrate how the mean estimated number of new cases would have changed if NPIs were *not* enforced. The solid line refers to the observed (documented) and the dashed line to the estimated number of new cases. The NPIs are shown for the time period in which they were implemented while considering that their effect is subject to a time delay of 7 days.

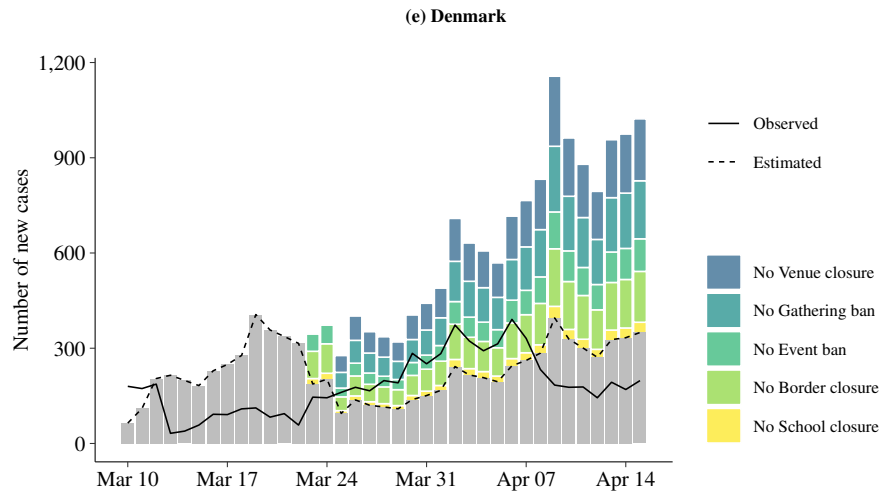


Fig. 10 Hypothetical number of daily new cases if non-pharmaceutical interventions (NPIs) were not implemented. The stacked bars illustrate how the mean estimated number of new cases would have changed if NPIs were *not* enforced. The solid line refers to the observed (documented) and the dashed line to the estimated number of new cases. The NPIs are shown for the time period in which they were implemented while considering that their effect is subject to a time delay of 7 days.

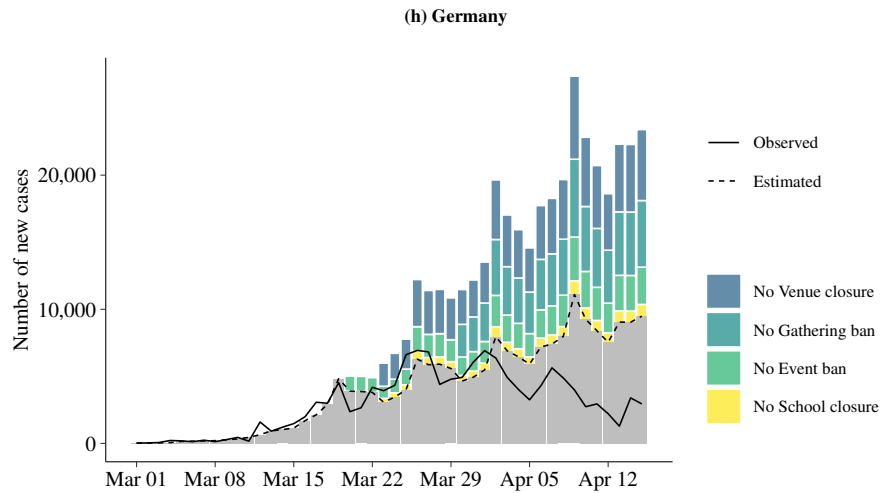
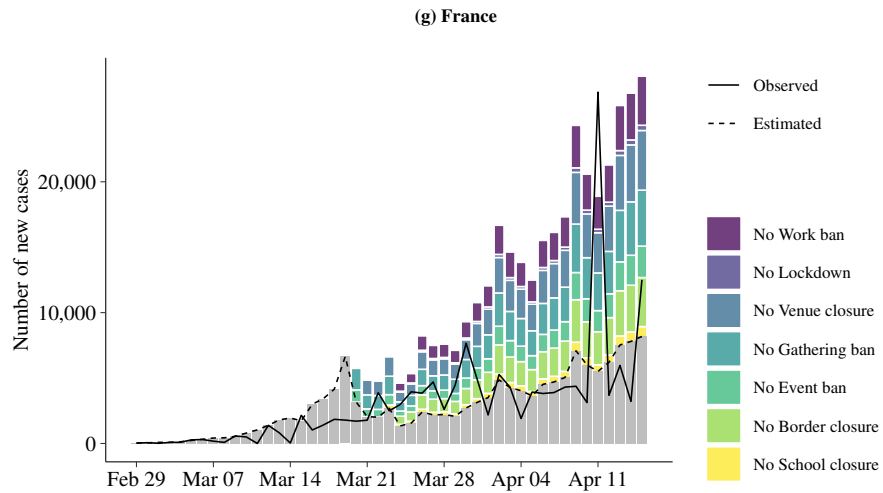


Fig. 10 Hypothetical number of daily new cases if non-pharmaceutical interventions (NPIs) were not implemented. The stacked bars illustrate how the mean estimated number of new cases would have changed if NPIs were *not* enforced. The solid line refers to the observed (documented) and the dashed line to the estimated number of new cases. The NPIs are shown for the time period in which they were implemented while considering that their effect is subject to a time delay of 7 days.

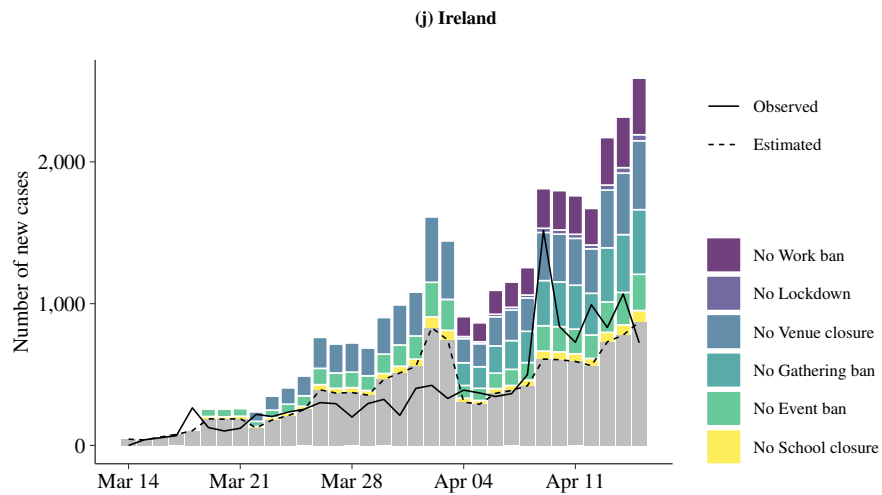
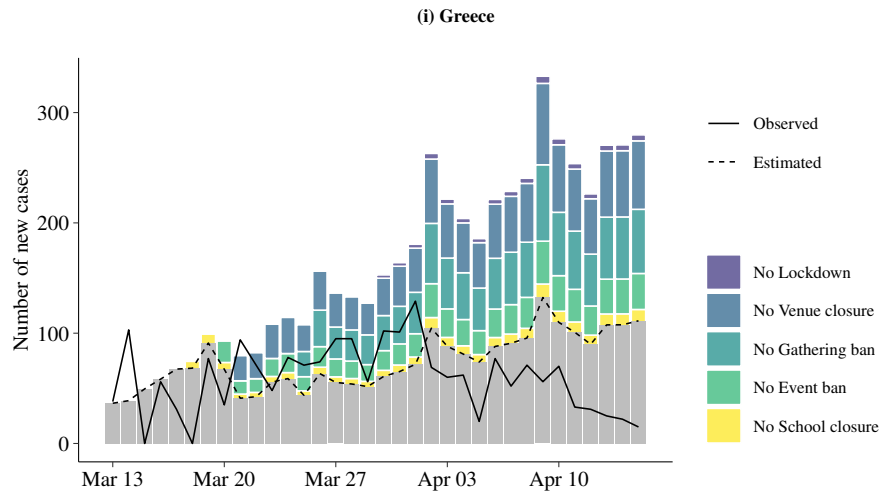


Fig. 10 Hypothetical number of daily new cases if non-pharmaceutical interventions (NPIs) were not implemented. The stacked bars illustrate how the mean estimated number of new cases would have changed if NPIs were *not* enforced. The solid line refers to the observed (documented) and the dashed line to the estimated number of new cases. The NPIs are shown for the time period in which they were implemented while considering that their effect is subject to a time delay of 7 days.

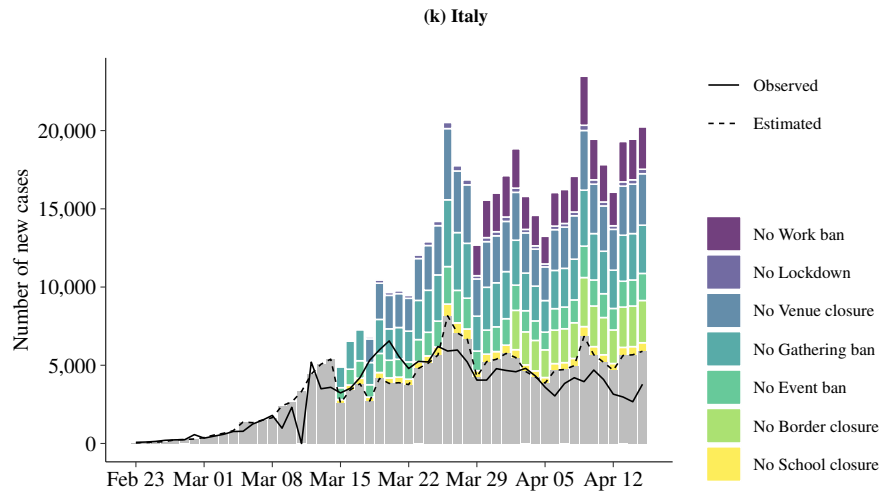


Fig. 10 Hypothetical number of daily new cases if non-pharmaceutical interventions (NPIs) were not implemented. The stacked bars illustrate how the mean estimated number of new cases would have changed if NPIs were *not* enforced. The solid line refers to the observed (documented) and the dashed line to the estimated number of new cases. The NPIs are shown for the time period in which they were implemented while considering that their effect is subject to a time delay of 7 days.

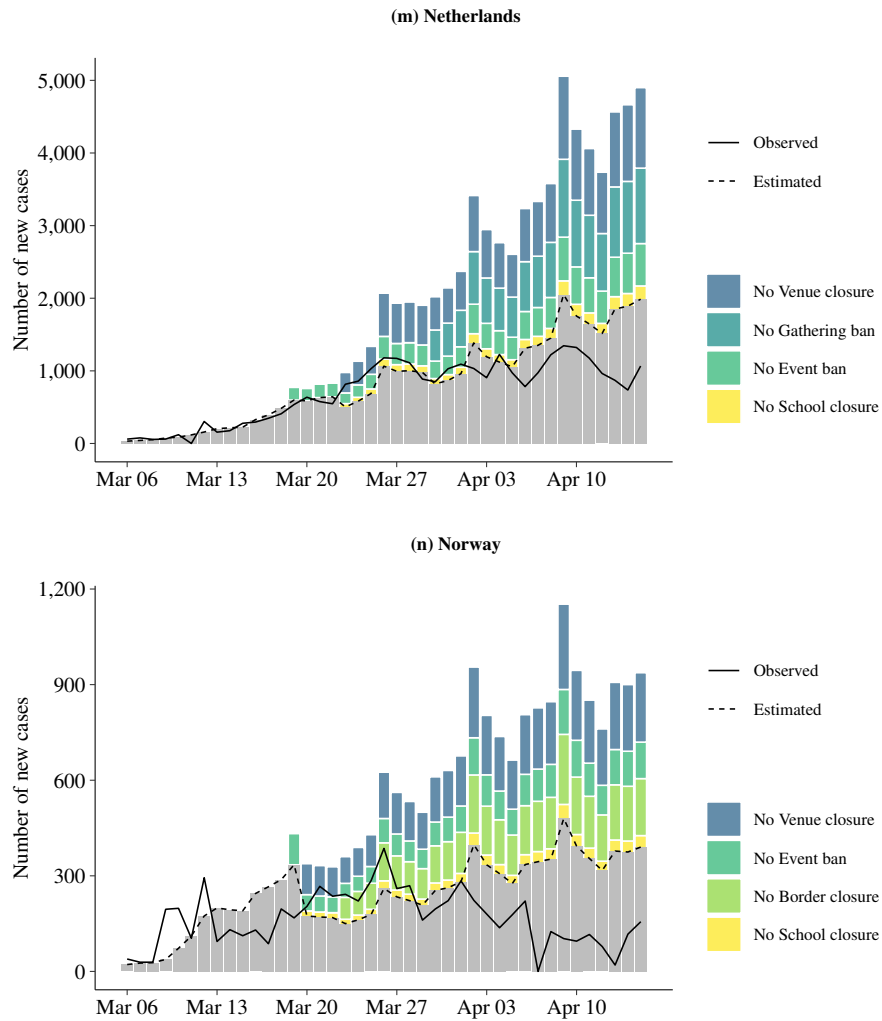


Fig. 10 Hypothetical number of daily new cases if non-pharmaceutical interventions (NPIs) were not implemented. The stacked bars illustrate how the mean estimated number of new cases would have changed if NPIs were *not* enforced. The solid line refers to the observed (documented) and the dashed line to the estimated number of new cases. The NPIs are shown for the time period in which they were implemented while considering that their effect is subject to a time delay of 7 days.

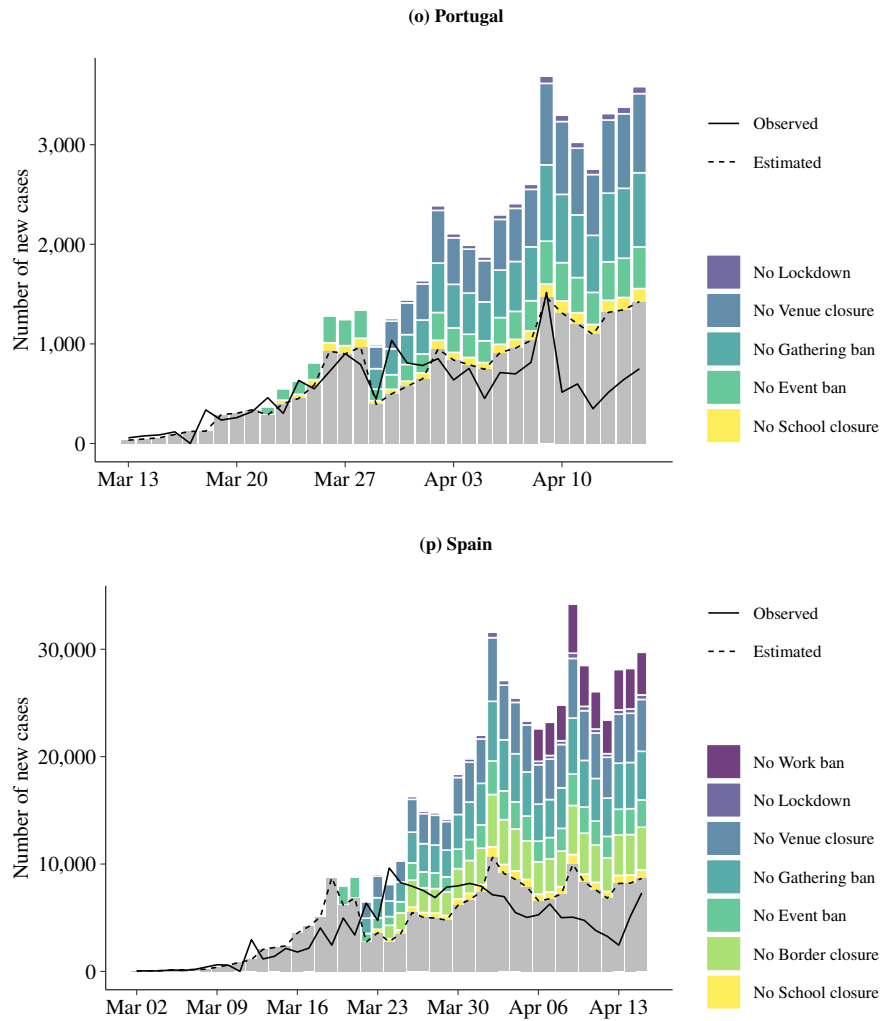


Fig. 10 Hypothetical number of daily new cases if non-pharmaceutical interventions (NPIs) were not implemented. The stacked bars illustrate how the mean estimated number of new cases would have changed if NPIs were *not* enforced. The solid line refers to the observed (documented) and the dashed line to the estimated number of new cases. The NPIs are shown for the time period in which they were implemented while considering that their effect is subject to a time delay of 7 days.

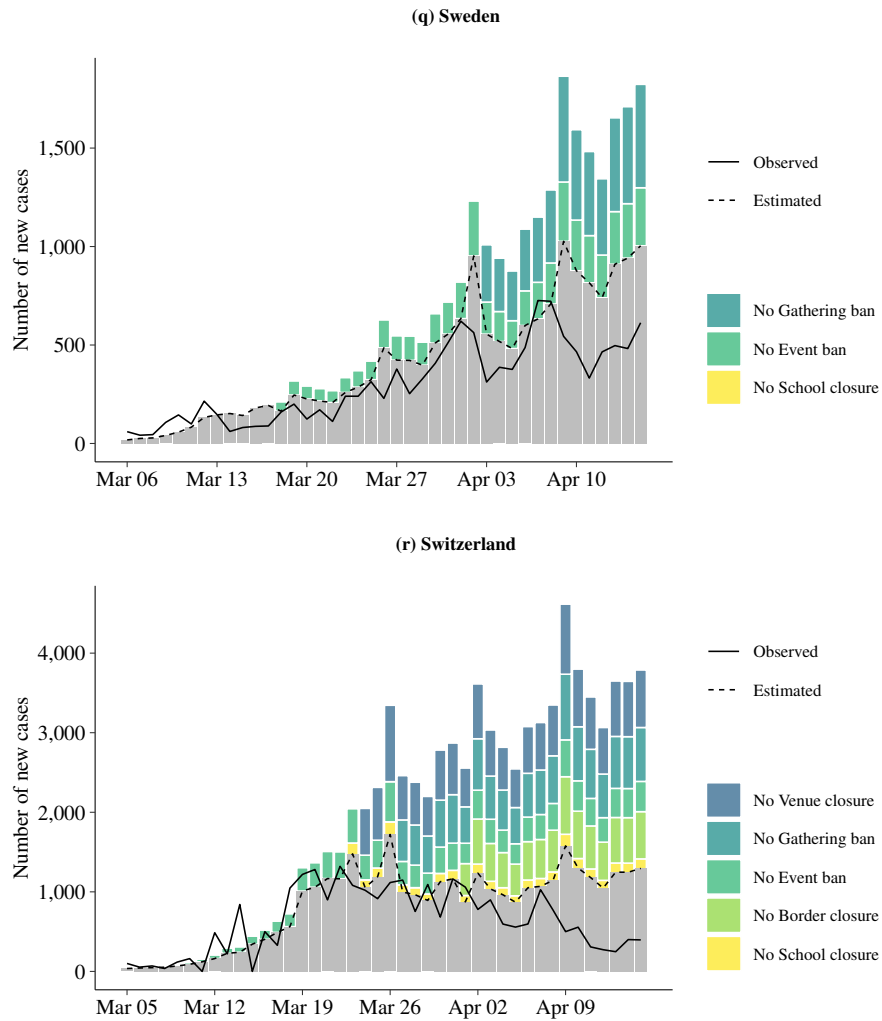


Fig. 10 Hypothetical number of daily new cases if non-pharmaceutical interventions (NPIs) were not implemented. The stacked bars illustrate how the mean estimated number of new cases would have changed if NPIs were *not* enforced. The solid line refers to the observed (documented) and the dashed line to the estimated number of new cases. The NPIs are shown for the time period in which they were implemented while considering that their effect is subject to a time delay of 7 days.

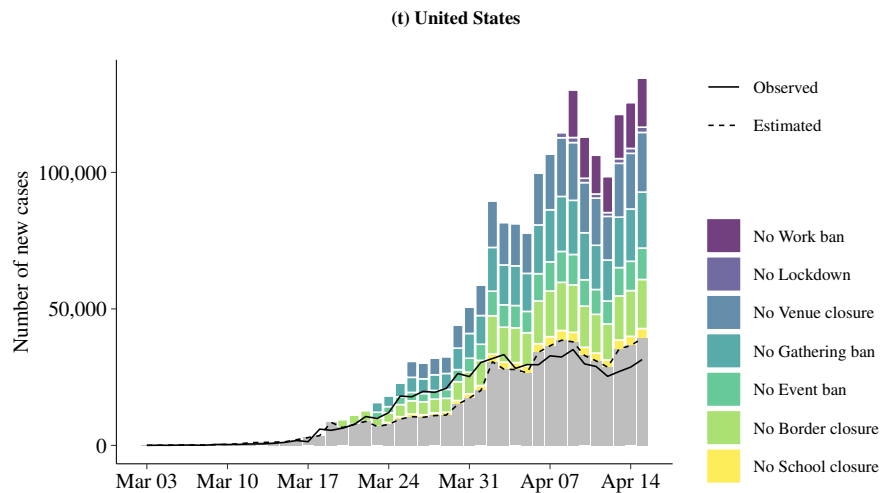
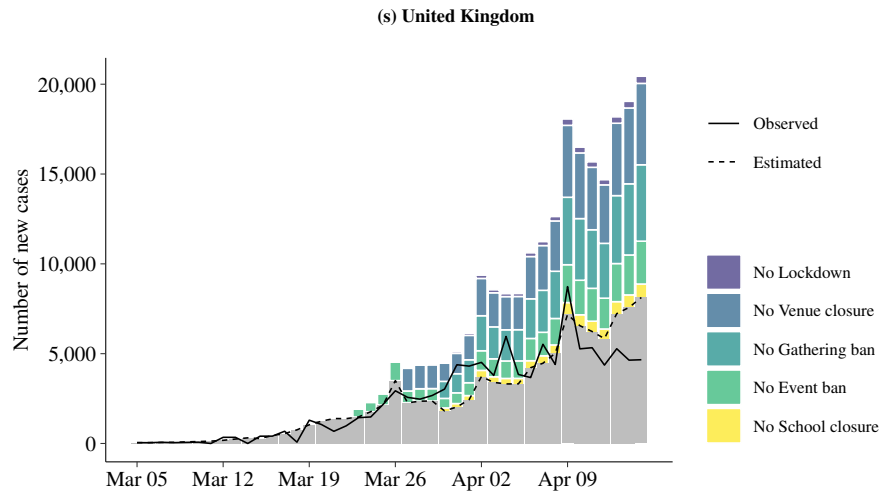


Fig. 10 Hypothetical number of daily new cases if non-pharmaceutical interventions (NPIs) were not implemented. The stacked bars illustrate how the mean estimated number of new cases would have changed if NPIs were *not* enforced. The solid line refers to the observed (documented) and the dashed line to the estimated number of new cases. The NPIs are shown for the time period in which they were implemented while considering that their effect is subject to a time delay of 7 days.

H. Data on non-pharmaceutical interventions

H.1. Data collection

Data on non-pharmaceutical interventions (NPIs) have been collected systematically in six steps.

1. Granular information on NPIs have been gathered from government resources and news outlets by our team.
2. After collecting data for the first few countries, NPIs have been classified into seven categories: (1) school closures, (2) border closures, (3) public event bans, (4) gathering bans, (5) venue closures (e.g., shops, bars, restaurants, and other recreational activities), (6) lockdowns prohibiting public movements without valid reason, and (7) work bans on non-essential business activities. The resulting classification has later been cross-checked against the encoding from the Imperial College COVID-19 Response Team⁷ and the “Coronavirus Government Response Tracker” from the University of Oxford⁷.
3. The date of NPIs has been referred to as the first day a measure went into effect. For instance, if a country banned events with more than 5,000 people on March 1 and events with more than 1,000 people on March 5, then March 1 has been chosen as the date of event bans.
4. NPIs for countries that subsequently followed in the data collection have been encoded accordingly.
5. The date of NPIs has been collected for each country or region. For countries that are less centrally managed, regional dates have been aggregated to the national level by choosing the first date after which two thirds of regions have implemented an NPI.
6. Local residents and/or native speakers have been recruited from each country in order to check our encoding. The reason for this is that countries have often used different legal terms to refer to the same NPI. Also, checking with local residents has helped to determine, for instance, whether the NPI was actually enforced or just recommended.

H.2. Data Sources

In Tbl. 6, we provide sources of our data on NPIs at a national level. For less centrally managed countries, the aggregated (national level) date of the NPI is shown and the regional sources are displayed in Tbl. 7 (United States), Tbl. 8 (Germany), Tbl. 9 (Spain), Tbl. 10 (Canada), Tbl. 11 (Australia), and Tbl. 12 (Italy). Note that border closures is defined as a national closure of borders and is thus only considered at a national level.

In the following, we want to highlight some encoding decisions that were subject to internal discussions.

⁷<https://www.bsg.ox.ac.uk/research/research-projects/coronavirus-government-response-tracker>

- School closure in New South Wales (Australia): Schools have remained technically open but attendance dropped below 5%. Therefore, schools have been encoded as closed.
- Border closure in the US: The US has not stopped flights with all countries but closed their land borders and has suspended travel from a huge number of Asian and European countries. Hence, US borders have been encoded as closed.
- Border closure in Germany: Germany has not closed its borders with Belgium and the Netherlands, therefore not all land borders have been closed and we have decided to encode them as open.
- School closure in Sweden: Only upper secondary schools (16+ y/o) and universities are studying from home, while other schools are still open. Thus, Swedish schools have been encoded as open.

Country	NPI	Date effective	Source
Australia	Event ban	2020-03-16	Date derived by aggregation, see Tab. 11
	Gathering ban	2020-04-01	Date derived by aggregation, see Tab. 11
	Border closure	2020-03-20	https://www.pm.gov.au/media/border-restrictions
	Venue closure	2020-03-23	Date derived by aggregation, see Tab. 11
Austria	Event ban	2020-03-11	https://www.bundeskanzleramt.gv.at/bundeskanzleramt/nachrichten-der-bundesregierung/2020/weitere-massnahmen-gegen-ausbreitung-des-coronavirus.html
	Gathering ban	2020-03-16	https://www.reuters.com/article/us-health-coronavirus-austria/austria-imposes-major-restrictions-on-movement-over-coronavirus-idUSKBN2120D8
	School closure	2020-03-16	https://www.reuters.com/article/us-health-coronavirus-austria/austria-closing-schools-over-coronavirus-as-border-checks-take-effect-idUSKBN20Y2YC
	Border closure	2020-03-19	https://www.reuters.com/article/us-health-coronavirus-austria/coronavirus-infections-top-2000-in-austria-more-border-controls-imposed-idUSKBN2160WK
	Venue closure	2020-03-16	https://www.bundeskanzleramt.gv.at/bundeskanzleramt/nachrichten-der-bundesregierung/2020/bundesregierung-praesentiert-aktuelle-beschlusse-zum-coronavirus.html
	Lockdown	2020-03-16	https://www.sozialministerium.at/Informationen-zum-Coronavirus/Coronavirus---Aktuelle-Ma%C3%9Fnahmen.html
Belgium	Event ban	2020-03-10	https://www.info-coronavirus.be/en/news/protect-yourself-and-protect-the-others/
	Gathering ban	2020-03-18	https://de.reuters.com/article/health-coronavirus-belgium-lockdown-idUSB5N28S003
	School closure	2020-03-16	https://www.info-coronavirus.be/en/2020/03/12/phase-2-maintained-transition-to-the-federal-phase-and-additional-measures/
	Border closure	2020-03-20	https://www.politico.eu/article/belgium-closes-borders-for-non-essential-travel/
	Venue closure	2020-03-14	https://www.info-coronavirus.be/en/2020/03/12/phase-2-maintained-transition-to-the-federal-phase-and-additional-measures/
	Lockdown	2020-03-18	https://de.reuters.com/article/health-coronavirus-belgium-lockdown-idUSB5N28S003
Canada	Event ban	2020-03-12	Date derived by aggregation, see Tab. 10
	Gathering ban	2020-03-27	Date derived by aggregation, see Tab. 10
	School closure	2020-03-15	Date derived by aggregation, see Tab. 10

	Border closure	2020-03-21	https://www.canada.ca/en/public-health/services/diseases/2019-novel-coronavirus-infection/canadas-reponse.html?topic=tilelink
	Venue closure	2020-03-17	Date derived by aggregation, see Tab. 10
Denmark	Event ban	2020-03-16	https://www.regeringen.dk/nyheder/pressemeddelelse-11-marts-i-spejlsalen/
	Gathering ban	2020-03-18	https://www.reuters.com/article/us-health-coronavirus-denmark/denmark-bans-crowds-of-over-10-people-to-curb-coronavirus-idUSKBN2143KG
	School closure	2020-03-16	https://www.regeringen.dk/nyheder/pressemeddelelse-11-marts-i-spejlsalen/
	Border closure	2020-03-16	https://www.oresunddirekt.dk/en/news/danish-borders-closed-due-to-coronavirus-covid-19
	Venue closure	2020-03-18	https://www.reuters.com/article/us-health-coronavirus-denmark/denmark-bans-crowds-of-over-10-people-to-curb-coronavirus-idUSKBN2143KG
Finland	Event ban	2020-03-16	https://valtioneuvosto.fi/en/article/-/asset_publisher/10616/hallitus-totesi-suomen-olevan-poikkeusoloissa-koronavirustilanteen-vuoksi
	Gathering ban	2020-03-16	https://valtioneuvosto.fi/en/article/-/asset_publisher/10616/hallitus-totesi-suomen-olevan-poikkeusoloissa-koronavirustilanteen-vuoksi
	School closure	2020-03-16	https://valtioneuvosto.fi/en/article/-/asset_publisher/10616/hallitus-totesi-suomen-olevan-poikkeusoloissa-koronavirustilanteen-vuoksi
	Border closure	2020-03-19	https://valtioneuvosto.fi/en/article/-/asset_publisher/1410869/suomen-rajaliikennetta-aletaan-rajoittaa-elakkeella-olevia-rajavartijoita-ja-poliiseja-voidaan-kutsua-toihin
	Venue closure	2020-03-16	https://valtioneuvosto.fi/en/article/-/asset_publisher/10616/hallitus-totesi-suomen-olevan-poikkeusoloissa-koronavirustilanteen-vuoksi
France	Event ban	2020-03-13	https://www.bbc.com/news/world-europe-51892477
	Gathering ban	2020-03-13	https://www.bbc.com/news/world-europe-51892477
	School closure	2020-03-16	https://www.bbc.com/news/world-europe-51892477
	Border closure	2020-03-17	https://www.gouvernement.fr/info-coronavirus
	Venue closure	2020-03-14	https://www.gouvernement.fr/partage/11444-declaration-de-m-edouard-philippe-premier-ministre-sur-le-covid-19
	Lockdown	2020-03-17	https://www.gouvernement.fr/info-coronavirus
	Work ban	2020-03-17	https://www.gouvernement.fr/info-coronavirus
Germany	Event ban	2020-03-11	Date derived by aggregation, see Tab. 8
	Gathering ban	2020-03-23	Date derived by aggregation, see Tab. 8
	School closure	2020-03-17	Date derived by aggregation, see Tab. 8

	Venue closure	2020-03-16	Date derived by aggregation, see Tab. 8
Greece	Event ban	2020-03-13	https://www.reuters.com/article/us-health-coronavirus-greece-measures/greece-to-shut-shops-quarantine-all-arrivals-from-abroad-idUSKBN2131SF
	Gathering ban	2020-03-18	https://www.reuters.com/article/us-health-coronavirus-greece-curfew/greece-imposes-lockdown-after-coronavirus-infections-jump-idUSKBN2190Z1
	School closure	2020-03-11	https://www.reuters.com/article/us-health-coronavirus-greece-education/greece-shuts-schools-universities-to-halt-coronavirus-spread-idUSKBN20X28V
	Venue closure	2020-03-14	https://www.cnn.gr/news/ellada/story/211153/koronoios-poia-katastimata-kleinoy-n-poia-menoyn-anoikta-lista
	Lockdown	2020-03-23	https://www.reuters.com/article/us-health-coronavirus-greece-curfew/greece-imposes-lockdown-after-coronavirus-infections-jump-idUSKBN2190Z1
	Ireland	Event ban	2020-03-12
Gathering ban		2020-03-28	https://www.gov.ie/en/publication/539d23-stay-at-home-the-latest-public-health-measures-to-prevent-the-spread/
School closure		2020-03-12	https://www.gov.ie/en/press-release/96eb4c-statement-from-the-national-public-health-emergency-team/
Venue closure		2020-03-15	https://www.gov.ie/en/press-release/20fc58-all-pubs-advised-to-close-until-march-29/
Lockdown		2020-03-28	https://www.gov.ie/en/publication/539d23-stay-at-home-the-latest-public-health-measures-to-prevent-the-spread/
Work ban		2020-03-28	https://www.gov.ie/en/publication/539d23-stay-at-home-the-latest-public-health-measures-to-prevent-the-spread/
Italy	Event ban	2020-03-01	Date derived by aggregation, see Tab. 12
	Gathering ban	2020-03-01	Date derived by aggregation, see Tab. 12
	School closure	2020-03-01	Date derived by aggregation, see Tab. 12
	Border closure	2020-03-26	https://www.gazzettaufficiale.it/showNewsDetail?id=2553&backTo=archivio&anno=2020&provenienza=archivio
	Venue closure	2020-03-11	Date derived by aggregation, see Tab. 12
	Lockdown	2020-03-11	Date derived by aggregation, see Tab. 12
Luxembourg	Work ban	2020-03-22	Date derived by aggregation, see Tab. 12
	Event ban	2020-03-11	https://gouvernement.lu/fr/actualites/toutes_actualites/communiqués/2020/03-mars/11-conseil-gouvernement.html

	Gathering ban	2020-03-17	https://coronavirus.gouvernement.lu/en/communications-officielles.gouvernement%2Ben%2Bactualites%2Btoutes_actualites%2Bcommuniques%2B2020%2B03-mars%2B17-declaration-premier-chd.html
	School closure	2020-03-16	https://coronavirus.gouvernement.lu/en/communications-officielles.gouvernement%2Ben%2Bactualites%2Btoutes_actualites%2Bcommuniques%2B2020%2B03-mars%2B12-cdg-extraordinaire-coronavirus.html
	Venue closure	2020-03-16	https://coronavirus.gouvernement.lu/en/communications-officielles.gouvernement%2Ben%2Bactualites%2Btoutes_actualites%2Bcommuniques%2B2020%2B03-mars%2B15-nouvelles-mesures-coronavirus.html
	Lockdown	2020-03-17	https://coronavirus.gouvernement.lu/en/communications-officielles.gouvernement%2Ben%2Bactualites%2Btoutes_actualites%2Bcommuniques%2B2020%2B03-mars%2B17-declaration-premier-chd.html
	Work ban	2020-03-18	http://www.legilux.lu/eli/etat/leg/rgd/2020/03/18/a165/jo
Netherlands	Event ban	2020-03-12	https://www.government.nl/latest/news/2020/03/12/new-measures-to-stop-spread-of-coronavirus-in-the-netherlands
	Gathering ban	2020-03-23	https://www.rijksoverheid.nl/actueel/nieuws/2020/03/24/aanvullende-maatregelen-23-maart
	School closure	2020-03-16	https://www.government.nl/latest/news/2020/03/15/additional-measures-in-schools-the-hospitality-sector-and-sport
	Venue closure	2020-03-16	https://www.government.nl/latest/news/2020/03/15/additional-measures-in-schools-the-hospitality-sector-and-sport
Norway	Event ban	2020-03-12	https://www.fhi.no/nettpub/coronavirus/rad-og-informasjon-til-andre-sektorer-og-yrkesgrupper/anbefalinger-ved--store-arrangementer-knyttet-til-koronasmitte-i-norge/
	School closure	2020-03-13	https://www.regjeringen.no/en/aktuelt/coronavirus-measures-to-continue/id2694682/
	Border closure	2020-03-16	https://www.regjeringen.no/no/aktuelt/innforer-strengere-grensekontroll/id2693624/
	Venue closure	2020-03-13	https://www.regjeringen.no/en/aktuelt/coronavirus-measures-to-continue/id2694682/
Portugal	Event ban	2020-03-15	https://dre.pt/web/guest/home/-/dre/130277342/details/maximized
	Gathering ban	2020-03-22	https://dre.pt/web/guest/legislacao-consolidada/-/lc/130473378/202004042116/73800717/diploma/indice

	School closure	2020-03-16	https://www.portugal.gov.pt/pt/gc22/comunicacao/comunicado?i=suspensao-de-todas-as-atividades-letivas-e-nao-letivas-com-presenca-de-estudantes-em-todas-as-instituicoes-de-ensino-superior
	Venue closure	2020-03-22	https://dre.pt/web/guest/legislacao-consolidada/-/lc/130473378/202004042116/73800717/diploma/indice
	Lockdown	2020-03-22	https://dre.pt/web/guest/legislacao-consolidada/-/lc/130473378/202004042116/73800717/diploma/indice
Spain	Event ban	2020-03-13	Date derived by aggregation, see Tab. 9
	Gathering ban	2020-03-15	Date derived by aggregation, see Tab. 9
	School closure	2020-03-16	Date derived by aggregation, see Tab. 9
	Border closure	2020-03-17	https://english.elpais.com/society/2020-03-16/spain-closes-its-borders-to-contain-coronavirus.html
	Venue closure	2020-03-15	Date derived by aggregation, see Tab. 9
	Lockdown	2020-03-15	Date derived by aggregation, see Tab. 9
	Work ban	2020-03-30	Date derived by aggregation, see Tab. 9
Sweden	Event ban	2020-03-11	https://www.government.se/articles/2020/03/ordinance-on-a-prohibition-against-holding-public-gatherings-and-events/
	Gathering ban	2020-03-27	https://www.dailymail.co.uk/news/article-8160653/Sweden-bans-gatherings-50-people-threatens-people-six-month-jail-terms.html
Switzerland	Event ban	2020-02-28	https://www.admin.ch/gov/it/pagina-iniziale/documentazione/comunicati-stampa.msg-id-78289.html
	Gathering ban	2020-03-20	https://www.admin.ch/gov/it/pagina-iniziale/documentazione/comunicati-stampa/comunicati-stampa-consiglio-federale.msg-id-78513.html
	School closure	2020-03-16	https://www.admin.ch/gov/it/pagina-iniziale/documentazione/comunicati-stampa/comunicati-stampa-consiglio-federale.html?dyn_startDate=01.01.2015
	Border closure	2020-03-25	https://www.bag.admin.ch/bag/it/home/krankheiten/ausbrueche-epidemien-pandemien/aktuelle-ausbrueche-epidemien/novel-cov/massnahmen-des-bundes.html
	Venue closure	2020-03-17	https://www.admin.ch/gov/it/pagina-iniziale/documentazione/comunicati-stampa/comunicati-stampa-consiglio-federale.html?dyn_startDate=01.01.2015
United Kingdom	Event ban	2020-03-16	https://www.gov.uk/guidance/covid-19-guidance-for-mass-gatherings
	Gathering ban	2020-03-23	https://www.gov.uk/government/speeches/pm-address-to-the-nation-on-coronavirus-23-march-2020
	School closure	2020-03-23	https://www.gov.uk/government/speeches/pm-statement-on-coronavirus-22-march-2020

United States of America	Venue closure	2020-03-20	https://www.wsj.com/articles/u-k-escalates-measures-to-fight-coronavirus-11584741690
	Lockdown	2020-03-23	https://www.gov.uk/government/speeches/pm-address-to-the-nation-on-coronavirus-23-march-2020
	Event ban	2020-03-16	Date derived by aggregation, see Tab. 7
	Gathering ban	2020-03-16	Date derived by aggregation, see Tab. 7
	School closure	2020-03-18	Date derived by aggregation, see Tab. 7
	Border closure	2020-03-13	https://www.theguardian.com/world/2020/mar/11/coronavirus-outbreak-us-trump-latest#maincontent
	Venue closure	2020-03-27	Date derived by aggregation, see Tab. 7
	Lockdown	2020-04-04	Date derived by aggregation, see Tab. 7
	Work ban	2020-03-27	Date derived by aggregation, see Tab. 7

Table 6: Sources for policies in Switzerland, Austria, Belgium, Denmark, Finland, France, United Kingdom, Greece, Ireland, Luxembourg, Netherlands, Norway, Portugal, Sweden, United States of America, Germany, Italy, Spain, Canada, and Australia

NPI	Date	# Effective	Region	Source
Event ban	2020-03-11	3 out of 51	District of Columbia	https://wjla.com/news/coronavirus/dc-health-postponing-cancelling-events-1000-people-through-march
Event ban	2020-03-11	3 out of 51	Kentucky	https://governor.ky.gov/covid19
Event ban	2020-03-11	3 out of 51	Rhode Island	https://www.ri.gov/press/view/37892
Event ban	2020-03-12	18 out of 51	California	https://thehill.com/policy/healthcare/487179-california-governor-calls-for-cancellations-of-large-events
Event ban	2020-03-12	18 out of 51	Connecticut	https://portal.ct.gov/-/media/Office-of-the-Governor/Executive-Orders/Lamont-Executive-Orders/Executive-Order-No-7.pdf?la=en
Event ban	2020-03-12	18 out of 51	Florida	https://www.miamiherald.com/news/local/community/miami-dade/article241133076.html
Event ban	2020-03-12	18 out of 51	Indiana	https://www.cdc.gov/coronavirus/2019-ncov/community/large-events/mass-gatherings-ready-for-covid-19.html
Event ban	2020-03-12	18 out of 51	Maryland	https://governor.maryland.gov/2020/03/12/governor-hogan-announces-major-actions-to-protect-public-health-limit-spread-of-covid-19-pandemic/
Event ban	2020-03-12	18 out of 51	Mississippi	https://www.coronavirus.ms.gov/2019-11/msdh-has-issued-enhanced-protective-recommendations
Event ban	2020-03-12	18 out of 51	New Jersey	https://www.nj.gov/governor/news/news/562020/approved/20200312a.shtml
Event ban	2020-03-12	18 out of 51	New Mexico	https://www.governor.state.nm.us/2020/03/12/health-secretary-issues-public-health-order-suspending-mass-gatherings-in-new-mexico/
Event ban	2020-03-12	18 out of 51	New York	https://www.governor.ny.gov/news/no-2021-continuing-temporary-suspension-and-modification-laws-relating-disaster-emergency
Event ban	2020-03-12	18 out of 51	Ohio	https://coronavirus.ohio.gov/wps/wcm/connect/gov/b815ab52-a571-4e65-9077-32468779671a/ODH+Order+to+Limit+and+Prohibit+Mass+Gatherings%2C+3.12.20.pdf?MOD=AJPERES&CONVERT_T0=url&CACHEID=ROOTWORKSPACE.Z18_M1HGGIKON0J000Q09DDDDM3000-b815ab52-a571-4e65-9077-32468779671a-n5828iN
Event ban	2020-03-12	18 out of 51	Oregon	https://www.oregon.gov/osp/programs/sfm/Pages/Event_Cancellations.aspx
Event ban	2020-03-12	18 out of 51	Pennsylvania	https://lancasteronline.com/news/health/gov-tom-wolf-cancel-large-events-with-more-than-250-people/article_1a6f027c-648e-11ea-aa2f-c787d0825889.html
Event ban	2020-03-12	18 out of 51	Utah	https://kutv.com/news/local/live-blog-closures-event-cancellations-more-in-utah-due-to-coronavirus
Event ban	2020-03-12	18 out of 51	Virginia	https://www.governor.virginia.gov/newsroom/all-releases/2020/march/headline-853537-en.html

Event ban	2020-03-12	18 out of 51	West Virginia	https://governor.wv.gov/News/press-releases/2020/Pages/COVID-UPDATE-Gov.-Justice-announces-State-employee-travel-ban,-basketball-tournament-cancellation-among-latest-precautions.aspx
Event ban	2020-03-13	25 out of 51	Arizona	https://www.fox10phoenix.com/news/arizona-governor-says-schools-mass-gatherings-events-of-50-or-more-canceled-amid-covid-19-spread
Event ban	2020-03-13	25 out of 51	Louisiana	https://gov.louisiana.gov/index.cfm/communication/viewcampaign/2548?uid=hgdtfgl%3Dn7&nowrap=1
Event ban	2020-03-13	25 out of 51	Massachusetts	https://www.mass.gov/news/governor-baker-issues-order-limiting-large-gatherings-in-the-commonwealth
Event ban	2020-03-13	25 out of 51	Michigan	https://www.michigan.gov/whitmer/0,9309,7-387-90499_90705-521595--,00.html
Event ban	2020-03-13	25 out of 51	Minnesota	https://apnews.com/24d6d0c93ded9e8a5c2712df0a045854
Event ban	2020-03-13	25 out of 51	Tennessee	https://www.tn.gov/governor/news/2020/3/13/governor-lee-issues-guidance-for-mass-gatherings--schools-and-state-workforce.html
Event ban	2020-03-13	25 out of 51	Washington	https://www.governor.wa.gov/news-media/inslee-announces-statewide-school-closures-expansion-limits-large-gatherings
Event ban	2020-03-14	26 out of 51	North Carolina	https://files.nc.gov/governor/documents/files/E0117-COVID-19-Prohibiting-Mass-Gathering-and-K12-School-Closure.pdf

<i>NPI implemented in two thirds of the regions by 2020-03-16</i>				
Event ban	2020-03-16	51 out of 51	Alabama	https://eu.usatoday.com/story/news/health/2020/03/16/coronavirus-live-updates-us-death-toll-rises-cases-testing/5053816002/
Event ban	2020-03-16	51 out of 51	Alaska	https://eu.usatoday.com/story/news/health/2020/03/16/coronavirus-live-updates-us-death-toll-rises-cases-testing/5053816002/
Event ban	2020-03-16	51 out of 51	Arkansas	https://eu.usatoday.com/story/news/health/2020/03/16/coronavirus-live-updates-us-death-toll-rises-cases-testing/5053816002/
Event ban	2020-03-16	51 out of 51	Colorado	https://northglenn-thorntonsentinel.com/stories/colorado-events-of-50-people-no-sit-down-restaurants-bars,296332
Event ban	2020-03-16	51 out of 51	Delaware	https://eu.usatoday.com/story/news/health/2020/03/16/coronavirus-live-updates-us-death-toll-rises-cases-testing/5053816002/
Event ban	2020-03-16	51 out of 51	Georgia	https://eu.usatoday.com/story/news/health/2020/03/16/coronavirus-live-updates-us-death-toll-rises-cases-testing/5053816002/
Event ban	2020-03-16	51 out of 51	Hawaii	https://eu.usatoday.com/story/news/health/2020/03/16/coronavirus-live-updates-us-death-toll-rises-cases-testing/5053816002/
Event ban	2020-03-16	51 out of 51	Idaho	https://eu.usatoday.com/story/news/health/2020/03/16/coronavirus-live-updates-us-death-toll-rises-cases-testing/5053816002/

Event ban	2020-03-16	51 out of 51	Illinois	https://herald-review.com/news/state-and-regional/govt-and-politics/monday-update-pritzker-bans-gatherings-of-50-or-more-12-new-illinois-cases-announced/article_c5fa6e55-70f4-583b-aea9-09ce2315eb16.html
Event ban	2020-03-16	51 out of 51	Iowa	https://eu.usatoday.com/story/news/health/2020/03/16/coronavirus-live-updates-us-death-toll-rises-cases-testing/5053816002/
Event ban	2020-03-16	51 out of 51	Kansas	https://govstatus.egov.com/coronavirus
Event ban	2020-03-16	51 out of 51	Maine	https://eu.usatoday.com/story/news/health/2020/03/16/coronavirus-live-updates-us-death-toll-rises-cases-testing/5053816002/
Event ban	2020-03-16	51 out of 51	Missouri	https://governor.mo.gov/press-releases/archive/governor-parsons-statement-regarding-cdc-recommendations-mass-gatherings-and
Event ban	2020-03-16	51 out of 51	Montana	https://eu.usatoday.com/story/news/health/2020/03/16/coronavirus-live-updates-us-death-toll-rises-cases-testing/5053816002/
Event ban	2020-03-16	51 out of 51	Nebraska	https://eu.usatoday.com/story/news/health/2020/03/16/coronavirus-live-updates-us-death-toll-rises-cases-testing/5053816002/
Event ban	2020-03-16	51 out of 51	Nevada	https://eu.usatoday.com/story/news/health/2020/03/16/coronavirus-live-updates-us-death-toll-rises-cases-testing/5053816002/
Event ban	2020-03-16	51 out of 51	New Hampshire	https://www.governor.nh.gov/news-media/press-2020/20200316-covid-10-businesses.htm
Event ban	2020-03-16	51 out of 51	North Dakota	https://eu.usatoday.com/story/news/health/2020/03/16/coronavirus-live-updates-us-death-toll-rises-cases-testing/5053816002/
Event ban	2020-03-16	51 out of 51	Oklahoma	https://eu.usatoday.com/story/news/health/2020/03/16/coronavirus-live-updates-us-death-toll-rises-cases-testing/5053816002/
Event ban	2020-03-16	51 out of 51	South Carolina	https://eu.usatoday.com/story/news/health/2020/03/16/coronavirus-live-updates-us-death-toll-rises-cases-testing/5053816002/
Event ban	2020-03-16	51 out of 51	South Dakota	https://eu.usatoday.com/story/news/health/2020/03/16/coronavirus-live-updates-us-death-toll-rises-cases-testing/5053816002/
Event ban	2020-03-16	51 out of 51	Texas	https://eu.usatoday.com/story/news/health/2020/03/16/coronavirus-live-updates-us-death-toll-rises-cases-testing/5053816002/
Event ban	2020-03-16	51 out of 51	Vermont	https://eu.usatoday.com/story/news/health/2020/03/16/coronavirus-live-updates-us-death-toll-rises-cases-testing/5053816002/
Event ban	2020-03-16	51 out of 51	Wisconsin	https://content.govdelivery.com/accounts/WIGOV/bulletins/2817964
Event ban	2020-03-16	51 out of 51	Wyoming	https://eu.usatoday.com/story/news/health/2020/03/16/coronavirus-live-updates-us-death-toll-rises-cases-testing/5053816002/
NPI	Date	# Effective	Region	Source
Gathering ban	2020-03-11	1 out of 51	Kentucky	https://governor.ky.gov/covid19

Gathering ban	2020-03-13	2 out of 51	Arizona	https://www.fox10phoenix.com/news/arizona-governor-says-schools-mass-gatherings-events-of-50-or-more-canceled-amid-covid-19-spread
<i>NPI implemented in two thirds of the regions by 2020-03-16</i>				
Gathering ban	2020-03-16	51 out of 51	Alabama	https://governor.alabama.gov/assets/2020/03/Amended-Statewide-Social-Distancing-SHO-Order-3.27.2020-FINAL.pdf
Gathering ban	2020-03-16	51 out of 51	Alaska	https://eu.usatoday.com/story/news/health/2020/03/16/coronavirus-live-updates-us-death-toll-rises-cases-testing/5053816002/
Gathering ban	2020-03-16	51 out of 51	Arkansas	https://eu.usatoday.com/story/news/health/2020/03/16/coronavirus-live-updates-us-death-toll-rises-cases-testing/5053816002/
Gathering ban	2020-03-16	51 out of 51	California	https://eu.usatoday.com/story/news/health/2020/03/16/coronavirus-live-updates-us-death-toll-rises-cases-testing/5053816002/
Gathering ban	2020-03-16	51 out of 51	Colorado	https://northglenn-thorntonsentinel.com/stories/colorado-events-of-50-people-no-sit-down-restaurants-bars,296332
Gathering ban	2020-03-16	51 out of 51	Connecticut	https://eu.usatoday.com/story/news/health/2020/03/16/coronavirus-live-updates-us-death-toll-rises-cases-testing/5053816002/
Gathering ban	2020-03-16	51 out of 51	Delaware	https://eu.usatoday.com/story/news/health/2020/03/16/coronavirus-live-updates-us-death-toll-rises-cases-testing/5053816002/
Gathering ban	2020-03-16	51 out of 51	District of Columbia	https://dc.gov/release/mayor\OT1\textquoterights-order-2020-048-prohibition-mass-gatherings-during-public-health-emergency
Gathering ban	2020-03-16	51 out of 51	Florida	https://eu.usatoday.com/story/news/health/2020/03/16/coronavirus-live-updates-us-death-toll-rises-cases-testing/5053816002/
Gathering ban	2020-03-16	51 out of 51	Georgia	https://eu.usatoday.com/story/news/health/2020/03/16/coronavirus-live-updates-us-death-toll-rises-cases-testing/5053816002/
Gathering ban	2020-03-16	51 out of 51	Hawaii	https://eu.usatoday.com/story/news/health/2020/03/16/coronavirus-live-updates-us-death-toll-rises-cases-testing/5053816002/
Gathering ban	2020-03-16	51 out of 51	Idaho	https://eu.usatoday.com/story/news/health/2020/03/16/coronavirus-live-updates-us-death-toll-rises-cases-testing/5053816002/
Gathering ban	2020-03-16	51 out of 51	Illinois	https://eu.usatoday.com/story/news/health/2020/03/16/coronavirus-live-updates-us-death-toll-rises-cases-testing/5053816002/
Gathering ban	2020-03-16	51 out of 51	Indiana	https://eu.usatoday.com/story/news/health/2020/03/16/coronavirus-live-updates-us-death-toll-rises-cases-testing/5053816002/
Gathering ban	2020-03-16	51 out of 51	Iowa	https://eu.usatoday.com/story/news/health/2020/03/16/coronavirus-live-updates-us-death-toll-rises-cases-testing/5053816002/
Gathering ban	2020-03-16	51 out of 51	Kansas	https://govstatus.egov.com/coronavirus
Gathering ban	2020-03-16	51 out of 51	Louisiana	https://eu.usatoday.com/story/news/health/2020/03/16/coronavirus-live-updates-us-death-toll-rises-cases-testing/5053816002/

Gathering ban	2020-03-16	51 out of 51	Maine	https://eu.usatoday.com/story/news/health/2020/03/16/coronavirus-live-updates-us-death-toll-rises-cases-testing/5053816002/
Gathering ban	2020-03-16	51 out of 51	Maryland	https://eu.usatoday.com/story/news/health/2020/03/16/coronavirus-live-updates-us-death-toll-rises-cases-testing/5053816002/
Gathering ban	2020-03-16	51 out of 51	Massachusetts	https://eu.usatoday.com/story/news/health/2020/03/16/coronavirus-live-updates-us-death-toll-rises-cases-testing/5053816002/
Gathering ban	2020-03-16	51 out of 51	Michigan	https://www.michigan.gov/whitmer/0,9309,7-387-90499_90705-521890--,00.html
Gathering ban	2020-03-16	51 out of 51	Minnesota	https://eu.usatoday.com/story/news/health/2020/03/16/coronavirus-live-updates-us-death-toll-rises-cases-testing/5053816002/
Gathering ban	2020-03-16	51 out of 51	Mississippi	https://eu.usatoday.com/story/news/health/2020/03/16/coronavirus-live-updates-us-death-toll-rises-cases-testing/5053816002/
Gathering ban	2020-03-16	51 out of 51	Missouri	https://eu.usatoday.com/story/news/health/2020/03/16/coronavirus-live-updates-us-death-toll-rises-cases-testing/5053816002/
Gathering ban	2020-03-16	51 out of 51	Montana	https://eu.usatoday.com/story/news/health/2020/03/16/coronavirus-live-updates-us-death-toll-rises-cases-testing/5053816002/
Gathering ban	2020-03-16	51 out of 51	Nebraska	https://eu.usatoday.com/story/news/health/2020/03/16/coronavirus-live-updates-us-death-toll-rises-cases-testing/5053816002/
Gathering ban	2020-03-16	51 out of 51	Nevada	https://eu.usatoday.com/story/news/health/2020/03/16/coronavirus-live-updates-us-death-toll-rises-cases-testing/5053816002/
Gathering ban	2020-03-16	51 out of 51	New Hampshire	https://www.governor.nh.gov/news-media/press-2020/20200316-covid-10-businesses.htm
Gathering ban	2020-03-16	51 out of 51	New Jersey	https://www.governor.nh.gov/news-media/press-2020/20200315-emergency-order-1.html
Gathering ban	2020-03-16	51 out of 51	New Mexico	https://eu.usatoday.com/story/news/health/2020/03/16/coronavirus-live-updates-us-death-toll-rises-cases-testing/5053816002/
Gathering ban	2020-03-16	51 out of 51	New York	https://eu.usatoday.com/story/news/health/2020/03/16/coronavirus-live-updates-us-death-toll-rises-cases-testing/5053816002/
Gathering ban	2020-03-16	51 out of 51	North Carolina	https://eu.usatoday.com/story/news/health/2020/03/16/coronavirus-live-updates-us-death-toll-rises-cases-testing/5053816002/
Gathering ban	2020-03-16	51 out of 51	North Dakota	https://eu.usatoday.com/story/news/health/2020/03/16/coronavirus-live-updates-us-death-toll-rises-cases-testing/5053816002/
Gathering ban	2020-03-16	51 out of 51	Ohio	https://eu.usatoday.com/story/news/health/2020/03/16/coronavirus-live-updates-us-death-toll-rises-cases-testing/5053816002/
Gathering ban	2020-03-16	51 out of 51	Oklahoma	https://eu.usatoday.com/story/news/health/2020/03/16/coronavirus-live-updates-us-death-toll-rises-cases-testing/5053816002/

Gathering ban	2020-03-16	51 out of 51	Oregon	https://www.kptv.com/news/covid--in-oregon-governor-cancels-gatherings-of-more-than/article_8e9aafec-67d2-11ea-af7f-2bad23d52443.html
Gathering ban	2020-03-16	51 out of 51	Pennsylvania	https://www.governor.pa.gov/newsroom/gov-wolf-puts-statewide-covid-19-mitigation-efforts-in-effect-stresses-need-for-every-pennsylvanian-to-take-action-to-stop-the-spread/
Gathering ban	2020-03-16	51 out of 51	Rhode Island	https://eu.usatoday.com/story/news/health/2020/03/16/coronavirus-live-updates-us-death-toll-rises-cases-testing/5053816002/
Gathering ban	2020-03-16	51 out of 51	South Carolina	https://eu.usatoday.com/story/news/health/2020/03/16/coronavirus-live-updates-us-death-toll-rises-cases-testing/5053816002/
Gathering ban	2020-03-16	51 out of 51	South Dakota	https://eu.usatoday.com/story/news/health/2020/03/16/coronavirus-live-updates-us-death-toll-rises-cases-testing/5053816002/
Gathering ban	2020-03-16	51 out of 51	Tennessee	https://eu.usatoday.com/story/news/health/2020/03/16/coronavirus-live-updates-us-death-toll-rises-cases-testing/5053816002/
Gathering ban	2020-03-16	51 out of 51	Texas	https://eu.usatoday.com/story/news/health/2020/03/16/coronavirus-live-updates-us-death-toll-rises-cases-testing/5053816002/
Gathering ban	2020-03-16	51 out of 51	Utah	https://eu.usatoday.com/story/news/health/2020/03/16/coronavirus-live-updates-us-death-toll-rises-cases-testing/5053816002/
Gathering ban	2020-03-16	51 out of 51	Vermont	https://eu.usatoday.com/story/news/health/2020/03/16/coronavirus-live-updates-us-death-toll-rises-cases-testing/5053816002/
Gathering ban	2020-03-16	51 out of 51	Virginia	https://eu.usatoday.com/story/news/health/2020/03/16/coronavirus-live-updates-us-death-toll-rises-cases-testing/5053816002/
Gathering ban	2020-03-16	51 out of 51	Washington	https://eu.usatoday.com/story/news/health/2020/03/16/coronavirus-live-updates-us-death-toll-rises-cases-testing/5053816002/
Gathering ban	2020-03-16	51 out of 51	West Virginia	https://eu.usatoday.com/story/news/health/2020/03/16/coronavirus-live-updates-us-death-toll-rises-cases-testing/5053816002/
Gathering ban	2020-03-16	51 out of 51	Wisconsin	https://content.govdelivery.com/accounts/WIGOV/bulletins/2817964
Gathering ban	2020-03-16	51 out of 51	Wyoming	https://eu.usatoday.com/story/news/health/2020/03/16/coronavirus-live-updates-us-death-toll-rises-cases-testing/5053816002/

NPI	Date	# Effective	Region	Source
School closure	2020-03-12	1 out of 51	New Mexico	https://www.governor.state.nm.us/2020/03/12/new-mexico-schools-to-temporarily-close/
School closure	2020-03-13	4 out of 51	Washington	https://www.governor.wa.gov/news-media/inslee-announces-statewide-school-closures-expansion-limits-large-gatherings
School closure	2020-03-13	4 out of 51	West Virginia	https://governor.wv.gov/News/press-releases/2020/Pages/COVID19-UPDATE-Gov.-Justice-announces-closure-of-West-Virginia-schools.aspx

School closure	2020-03-13	4 out of 51	Wisconsin	https://content.govdelivery.com/accounts/WIGOV/bulletins/281127d
School closure	2020-03-15	5 out of 51	Montana	http://opi.mt.gov/COVID-19-Information
School closure	2020-03-16	29 out of 51	Alaska	https://www.aljazeera.com/news/2020/03/emergencies-closures-states-handling-coronavirus-200317213356419.html
School closure	2020-03-16	29 out of 51	Arizona	https://www.azed.gov/finance/2020/03/16/school-closures-from-march-16-2020-through-march-27-2020/
School closure	2020-03-16	29 out of 51	Delaware	https://www.abc27.com/news/list-states-that-have-closed-all-schools-due-to-coronavirus/
School closure	2020-03-16	29 out of 51	District of Columbia	https://dcps.dc.gov/coronavirus
School closure	2020-03-16	29 out of 51	Florida	http://www.fldoe.org/newsroom/latest-news/florida-department-of-education-announces-additional-guidance-for-the-2019-20-school-year.shtml
School closure	2020-03-16	29 out of 51	Hawaii	https://www.aljazeera.com/news/2020/03/emergencies-closures-states-handling-coronavirus-200317213356419.html
School closure	2020-03-16	29 out of 51	Illinois	https://www.chicagotribune.com/coronavirus/ct-cb-coronavirus-illinois-schools-closed-cps-parents-need-to-know-20200317-zrcim5cpcfcgnerkboyx7esg5y-story.html
School closure	2020-03-16	29 out of 51	Kentucky	https://governor.ky.gov/covid19
School closure	2020-03-16	29 out of 51	Louisiana	https://www.fox61.com/article/news/health/coronavirus/connecticut-coronavirus-updates-march-12/520-ddfcc84c-1521-4354-907b-d53e2642bee9
School closure	2020-03-16	29 out of 51	Maine	https://www.pressherald.com/2020/03/14/scarborough-closes-schools-through-at-least-march-20/
School closure	2020-03-16	29 out of 51	Maryland	https://fox8.com/news/list-states-that-have-closed-all-schools-due-to-coronavirus/
School closure	2020-03-16	29 out of 51	Michigan	https://www.michigan.gov/whitmer/0,9309,7-387-90499_90705-521890--,00.html
School closure	2020-03-16	29 out of 51	Nevada	http://www.doe.nv.gov
School closure	2020-03-16	29 out of 51	New Hampshire	https://www.governor.nh.gov/news-media/press-2020/20200315-emergency-order-1.html
School closure	2020-03-16	29 out of 51	New York	https://www.governor.ny.gov/news/governor-cuomo-signs-executive-order-closing-schools-statewide-two-weeks
School closure	2020-03-16	29 out of 51	North Carolina	https://www.dpi.nc.gov/news/press-releases/2020/03/16/state-board-issues-guidance-personnel-facility-matters-covid-19-closure
School closure	2020-03-16	29 out of 51	North Dakota	https://www.nd.gov/dpi/school-closure-frequently-asked-questions
School closure	2020-03-16	29 out of 51	Pennsylvania	https://www.governor.pa.gov/newsroom/governor-wolf-announces-closure-of-pennsylvania-schools/
School closure	2020-03-16	29 out of 51	South Carolina	https://thehill.com/homenews/state-watch/487708-south-carolina-closes-schools-amid-outbreak
School closure	2020-03-16	29 out of 51	South Dakota	https://www.nd.gov/dpi/executive-orders-education

School closure	2020-03-16	29 out of 51	Tennessee	https://www.tn.gov/governor/news/2020/3/16/governor-lee-issues-statement-regarding-statewide-school-closure.html
School closure	2020-03-16	29 out of 51	Utah	https://www.schools.utah.gov/File/b27ab22a-d14f-4e12-b247-f95becea39d3
School closure	2020-03-16	29 out of 51	Virginia	https://www.governor.virginia.gov/newsroom/all-releases/2020/march/headline-854442-en.html
School closure	2020-03-16	29 out of 51	Wyoming	https://www.ktvq.com/wyoming-governor-directs-schools-to-close
<i>NPI implemented in two thirds of the regions by 2020-03-17</i>				
School closure	2020-03-17	38 out of 51	Arkansas	https://www.abc27.com/news/list-states-that-have-closed-all-schools-due-to-coronavirus/
School closure	2020-03-17	38 out of 51	California	https://www.abc27.com/news/list-states-that-have-closed-all-schools-due-to-coronavirus/
School closure	2020-03-17	38 out of 51	Connecticut	https://patch.com/connecticut/guilford/coronavirus-ct-gov-closes-all-schools-state-has-now-26-cases
School closure	2020-03-17	38 out of 51	Massachusetts	https://fox8.com/news/list-states-that-have-closed-all-schools-due-to-coronavirus/
School closure	2020-03-17	38 out of 51	Missouri	https://www.abc27.com/news/list-states-that-have-closed-all-schools-due-to-coronavirus/
School closure	2020-03-17	38 out of 51	Ohio	https://coronavirus.ohio.gov/wps/wcm/connect/gov/aeadbec1-574d-4a42-9ca4-4487b7a67a4f/Director%27s+Order+-+K-12+Schools+03.14.20.pdf?MOD=AJPERES&CONVERT_TO=url&CACHEID=ROOTWORKSPACE.Z18_M1HGGIKON0J000Q09DDDDM3000-aeadbec1-574d-4a42-9ca4-4487b7a67a4f-n5827Z4
School closure	2020-03-17	38 out of 51	Oklahoma	https://sde.ok.gov/newsblog/2020-03-16/emergency-state-board-meeting-expected-close-schools-until-april-6
School closure	2020-03-17	38 out of 51	Oregon	https://www.oregon.gov/newsroom/Pages/NewsDetail.aspx?newsid=36203
School closure	2020-03-17	38 out of 51	Rhode Island	https://www.ride.ri.gov/InsideRIDE/AdditionalInformation/Covid19.aspx
School closure	2020-03-18	46 out of 51	Alabama	https://www.aljazeera.com/news/2020/03/emergencies-closures-states-handling-coronavirus-200317213356419.html
School closure	2020-03-18	46 out of 51	Georgia	https://www.gpb.org/blogs/education-matters/2020/03/16/gov-kemp-orders-all-k-12-georgia-schools-close-until-end-of-march
School closure	2020-03-18	46 out of 51	Idaho	https://www.idahostatesman.com/news/coronavirus/article241291676.html
School closure	2020-03-18	46 out of 51	Kansas	https://www.washingtonpost.com/education/2020/03/17/kansas-is-first-state-close-schools-rest-school-year-amid-coronavirus-crisis-california-could-be-next/
School closure	2020-03-18	46 out of 51	Minnesota	https://mn.gov/governor/assets/E0%2020-02%20Final_tcm1055-423084.pdf
School closure	2020-03-18	46 out of 51	Nebraska	https://www.education.ne.gov/publichealth/known-school-closures/
School closure	2020-03-18	46 out of 51	New Jersey	https://www.nj.gov/governor/news/news/562020/approved/20200316c.shtml

School closure	2020-03-18	46 out of 51	Vermont	https://governor.vermont.gov/press-release/gov-scott-orders-orderly-closure-vermont-prek-12-schools-week
School closure	2020-03-19	49 out of 51	Indiana	https://www.abc27.com/news/list-states-that-have-closed-all-schools-due-to-coronavirus/
School closure	2020-03-19	49 out of 51	Mississippi	https://www.wlox.com/2020/03/19/gov-tate-reeves-give-update-plans-mississippi-schools/
School closure	2020-03-19	49 out of 51	Texas	https://www.dallasnews.com/news/public-health/2020/03/19/gov-abbott-announces-temporary-statewide-school-restaurant-gym-closures/
School closure	2020-03-23	50 out of 51	Colorado	https://www.denverpost.com/2020/03/11/colorado-schools-closed-coronavirus/
NPI	Date	# Effective	Region	Source
Venue closure	2020-03-15	3 out of 51	District of Columbia	https://www.washingtonian.com/2020/03/16/mayor-closes-dc-bars-and-restaurants-for-dine-in-service/
Venue closure	2020-03-15	3 out of 51	Ohio	https://governor.ohio.gov/wps/portal/gov/governor/media/news-and-media/dewine-orders-ohio-bars-restaurants-to-close
Venue closure	2020-03-15	3 out of 51	Pennsylvania	https://www.governor.pa.gov/newsroom/wolf-administration-orders-restaurants-and-bars-to-close-dine-in-service-in-mitigation-counties-to-stop-spread-of-covid-19/
Venue closure	2020-03-16	18 out of 51	California	https://www.latimes.com/business/story/2020-03-15/coronavirus-close-los-angeles-restaurants
Venue closure	2020-03-16	18 out of 51	Connecticut	https://www.courant.com/news/connecticut/hc-news-coronavirus-update-0316-20200316-ukhf6fmwh5cvtaob3yiavyzm5q-story.html
Venue closure	2020-03-16	18 out of 51	Delaware	https://coronavirus.delaware.gov/wp-content/uploads/sites/177/2020/03/coronavirus_govdec_restBars-1.pdf
Venue closure	2020-03-16	18 out of 51	Illinois	https://time.com/5803539/united-states-coronavirus-bars-restaurants/
Venue closure	2020-03-16	18 out of 51	Indiana	https://www.wndu.com/content/news/Indiana-governor-closes-restaurants-bars-to-dine-in-customers-568830011.html
Venue closure	2020-03-16	18 out of 51	Kentucky	https://governor.ky.gov/covid19
Venue closure	2020-03-16	18 out of 51	Louisiana	https://eu.thenewsstar.com/story/news/2020/03/16/louisiana-coronavirus-cases-rise-114-legislature-resume-work/5057909002/
Venue closure	2020-03-16	18 out of 51	Maryland	https://governor.maryland.gov/2020/03/19/governor-hogan-announces-further-actions-to-slow-the-spread-of-covid-19-relaunches-maryland-unites-initiative/
Venue closure	2020-03-16	18 out of 51	Michigan	https://www.usnews.com/news/best-states/michigan/articles/2020-03-16/michigan-governor-closes-restaurants-to-dine-in-customers
Venue closure	2020-03-16	18 out of 51	New Hampshire	https://www.governor.nh.gov/news-media/press-2020/20200316-covid-10-businesses.htm

Venue closure	2020-03-16	18 out of 51	New Jersey	https://www.nj.gov/governor/news/news/562020/approved/20200316a.shtml
Venue closure	2020-03-16	18 out of 51	New York	https://www.politico.com/states/new-york/albany/story/2020/03/16/new-york-new-jersey-connecticut-closing-bars-restaurants-indefinitely-starting-monday-night-1267159
Venue closure	2020-03-16	18 out of 51	Oregon	https://www.oregon.gov/newsroom/Pages/NewsDetail.aspx?newsid=36192
Venue closure	2020-03-16	18 out of 51	Rhode Island	https://www.ri.gov/press/view/37924
Venue closure	2020-03-16	18 out of 51	Washington	https://www.governor.wa.gov/news-media/inslee-announces-statewide-shutdown-restaurants-bars-and-expanded-social-gathering-limits
Venue closure	2020-03-17	28 out of 51	Colorado	https://www.eater.com/2020/3/15/21180761/coronavirus-restaurants-bars-closed-new-york-la-chicago
Venue closure	2020-03-17	28 out of 51	Iowa	https://governor.iowa.gov/press-release/gov-reynolds-issues-a-state-of-public-health-disaster-emergency
Venue closure	2020-03-17	28 out of 51	Massachusetts	https://www.mass.gov/news/baker-polito-administration-announces-emergency-actions-to-address-covid-19
Venue closure	2020-03-17	28 out of 51	Nevada	https://nvhealthresponse.nv.gov/wp-content/uploads/2020/03/NV-Health-Reponse-COVID19-Risk-Management-Initiative.pdf
Venue closure	2020-03-17	28 out of 51	North Carolina	https://www.newsobserver.com/news/coronavirus/article241245211.html
Venue closure	2020-03-17	28 out of 51	South Carolina	https://governor.sc.gov/sites/default/files/Documents/Executive-Orders/
Venue closure	2020-03-17	28 out of 51	Vermont	https://governor.vermont.gov/press-release/governor-phil-scott-announces-new-guidance-covid-19-community-mitigation-measures
Venue closure	2020-03-17	28 out of 51	Wisconsin	https://madison.com/ct/news/local/govt-and-politics/gov-tony-evers-orders-bars-restaurants-to-be-closed-across-wisconsin-for-in-house-dining/article_40abef70-b51e-5756-962f-801f0387eed6.html
Venue closure	2020-03-18	31 out of 51	Maine	https://www.maine.gov/governor/mills/news/governor-mills-takes-further-steps-respond-covid-19-protect-health-and-safety-maine-people
Venue closure	2020-03-18	31 out of 51	Utah	https://governor.utah.gov/2020/03/18/state-orders-restaurants-bars-to-suspend-dine-in-services-to-slow-spread-of-covid-19/
<hr/>				
<i>NPI implemented in two thirds of the regions by 2020-03-19</i>				
Venue closure	2020-03-19	36 out of 51	Arizona	https://azgovernor.gov/governor/news/2020/03/governor-ducey-announces-latest-covid-19-actions
Venue closure	2020-03-19	36 out of 51	Hawaii	https://www.hawaiinewsnow.com/2020/03/19/city-orders-restaurants-bars-night-clubs-close-dine-in-services-days/
Venue closure	2020-03-19	36 out of 51	Nebraska	https://www.3newsnow.com/news/coronavirus/directed-health-measures-released-by-governor-ricketts-office
Venue closure	2020-03-19	36 out of 51	New Mexico	https://www.governor.state.nm.us/2020/03/18/new-mexico-to-order-additional-closures-to-limit-spread-of-covid-19/

Venue closure	2020-03-19	36 out of 51	Texas	https://www.dallasnews.com/news/public-health/2020/03/19/gov-abbott-announces-temporary-statewide-school-restaurant-gym-closures/
Venue closure	2020-03-20	41 out of 51	Arkansas	https://www.nwaonline.com/news/2020/mar/20/governor-orders-gyms-restaurants-bars-c/
Venue closure	2020-03-20	41 out of 51	Montana	https://news.mt.gov/governor-bullock-announces-closure-of-dine-in-food-service-and-alcoholic-beverage-businesses-and-other-activities-that-pose-enhanced-risks-to-curtailed-spread-of-covid-19
Venue closure	2020-03-20	41 out of 51	North Dakota	https://www.governor.nd.gov/news/burgum-orders-bars-restaurants-closed-site-patrons-provides-additional-guidance-k-12-schools
Venue closure	2020-03-20	41 out of 51	South Dakota	https://www.governor.nd.gov/news/burgum-orders-bars-restaurants-closed-site-patrons-provides-additional-guidance-k-12-schools
Venue closure	2020-03-20	41 out of 51	Wyoming	https://health.wyo.gov/governor-and-state-health-officer-issue-public-spaces-closure-order/
Venue closure	2020-03-23	43 out of 51	Missouri	https://governor.mo.gov/press-releases/archive/governor-parson-signs-executive-order-20-05-allowing-sale-unprepared-foods
Venue closure	2020-03-23	43 out of 51	Tennessee	https://www.tn.gov/governor/news/2020/3/22/gov--bill-lee-signs-executive-order-mandating-alternative-business-models-for-restaurants-and-gyms--lifts-alcohol-regulations.html
Venue closure	2020-03-24	47 out of 51	Alaska	https://gov.alaska.gov/wp-content/uploads/sites/2/03232020-SOA-COVID-19-Health-Mandate-009.pdf
Venue closure	2020-03-24	47 out of 51	Georgia	https://www.usnews.com/news/best-states/georgia/articles/2020-03-23/counties-in-georgia-enact-restrictions-as-virus-spreads
Venue closure	2020-03-24	47 out of 51	Mississippi	https://www.jacksonfreepress.com/documents/2020/mar/24/mississippi-covid-19-response/
Venue closure	2020-03-24	47 out of 51	Virginia	https://www.governor.virginia.gov/newsroom/all-releases/2020/march/headline-855292-en.html
Venue closure	2020-03-25	49 out of 51	Idaho	https://coronavirus.idaho.gov/essential-services/
Venue closure	2020-03-25	49 out of 51	Oklahoma	https://kfor.com/news/local/gov-stitt-orders-all-non-essential-businesses-to-close-in-counties-affected-by-covid-19/
Venue closure	2020-03-27	50 out of 51	Alabama	https://governor.alabama.gov/assets/2020/03/Amended-Statewide-Social-Distancing-SHO-Order-3.27.2020-FINAL.pdf
Venue closure	2020-03-30	51 out of 51	Kansas	https://governor.kansas.gov/governor-kelly-issues-temporary-statewide-stay-home-order-in-ongoing-effort-to-combat-covid-19/
NPI	Date	# Effective	Region	Source

Lockdown	2020-01-04	1 out of 51	Nevada	https://www.fox5vegas.com/coronavirus/nevada-gov-sisolak-issues-stay-at-home-directive-through-april-30/article_6b11e83c-7430-11ea-abe6-0f026facbed.html
Lockdown	2020-03-19	2 out of 51	California	https://www.gov.ca.gov/2020/03/19/governor-gavin-newsom-issues-stay-at-home-order/
Lockdown	2020-03-21	4 out of 51	Illinois	https://www2.illinois.gov/Pages/news-item.aspx?ReleaseID=21288
Lockdown	2020-03-21	4 out of 51	New Jersey	https://www.nj.gov/governor/news/news/562020/approved/20200320j.shtml
Lockdown	2020-03-22	5 out of 51	New York	https://patch.com/new-york/new-york-city/new-yorks-stay-home-order-goes-effect
Lockdown	2020-03-23	11 out of 51	Connecticut	https://portal.ct.gov/Office-of-the-Governor/News/Press-Releases/2020/03-2020-Governor-Lamont-Releases-Guidance-to-Businesses-on-Order-Asking-Connecticut-to-Stay-Safe-Stay-Home
Lockdown	2020-03-23	11 out of 51	Louisiana	https://gov.louisiana.gov/assets/Proclamations/2020/JBE-33-2020.pdf
Lockdown	2020-03-23	11 out of 51	New Mexico	https://www.governor.state.nm.us/2020/03/23/state-enacts-further-restrictions-to-stop-spread-including-stay-at-home-instruction/
Lockdown	2020-03-23	11 out of 51	Ohio	https://coronavirus.ohio.gov/static/DirectorsOrderStayAtHome.pdf
Lockdown	2020-03-23	11 out of 51	Oregon	https://www.oregon.gov/newsroom/Pages/NewsDetail.aspx?newsid=36240
Lockdown	2020-03-23	11 out of 51	Washington	https://www.governor.wa.gov/news-media/inslee-announces-stay-home-stay-healthy%C2%A0order
Lockdown	2020-03-24	16 out of 51	Delaware	https://governor.delaware.gov/wp-content/uploads/sites/24/2020/03/Fifth-Modification-to-State-of-Emergency-03222020.pdf
Lockdown	2020-03-24	16 out of 51	Massachusetts	https://www.mass.gov/news/dph-public-health-advisory-stay-at-home-advisory
Lockdown	2020-03-24	16 out of 51	Michigan	https://www.michigan.gov/coronavirus/0,9753,7-406-98178_98455-521682--,00.html
Lockdown	2020-03-24	16 out of 51	Vermont	https://governor.vermont.gov/sites/scott/files/documents/ADDENDUM%206%20TO%20EXECUTIVE%20ORDER%2001-20.pdf
Lockdown	2020-03-24	16 out of 51	West Virginia	https://governor.wv.gov/News/press-releases/2020/Pages/COVID-19-UPDATE-Gov.-Justice-issues-Stay-at-Home-order-for-all-West-Virginians.aspx
Lockdown	2020-03-25	20 out of 51	Hawaii	https://governor.hawaii.gov/newsroom/latest-news/office-of-the-governor-news-release-governor-ige-issues-statewide-order-to-stay-at-home-work-from-home-to-fight-covid-19/
Lockdown	2020-03-25	20 out of 51	Idaho	https://www.idahostatesman.com/news/coronavirus/article241479406.html
Lockdown	2020-03-25	20 out of 51	Indiana	https://www.in.gov/gov/3232.htm
Lockdown	2020-03-25	20 out of 51	Wisconsin	https://content.govdelivery.com/accounts/WIGOV/bulletins/282deef
Lockdown	2020-03-26	22 out of 51	Colorado	https://bloximages.newyork1.vip.townnews.com/coloradopolitics.com/content/tncms/assets/v3/editorial/1/5c/15c0d646-6efd-11ea-9f44-936924cd21a7/5e7bfea00dc56.pdf.pdf
Lockdown	2020-03-26	22 out of 51	New Hampshire	https://www.governor.nh.gov/news-media/emergency-orders/documents/emergency-order-17-1.pdf

Lockdown	2020-03-27	24 out of 51	Minnesota	https://mn.gov/governor/assets/3a.%20EO%2020-20%20FINAL%20SIGNED%20Filed_tcm1055-425020.pdf
Lockdown	2020-03-27	24 out of 51	Utah	https://coronavirus.utah.gov/full-text-governors-stay-home-stay-safe-directive/
Lockdown	2020-03-28	27 out of 51	Alaska	https://gov.alaska.gov/home/covid19-healthmandates/
Lockdown	2020-03-28	27 out of 51	Montana	https://news.mt.gov/governor-bullock-issues-stay-at-home-directive-to-slow-the-spread-of-covid-19
Lockdown	2020-03-28	27 out of 51	Rhode Island	http://www.governor.ri.gov/documents/orders/Executive-Order-20-13.pdf
Lockdown	2020-03-30	32 out of 51	District of Columbia	https://coronavirus.dc.gov/release/mayor-bowser-issues-stay-home-order
Lockdown	2020-03-30	32 out of 51	Kansas	https://governor.kansas.gov/wp-content/uploads/2020/03/E020-16.pdf
Lockdown	2020-03-30	32 out of 51	Maryland	https://www.youtube.com/watch?v=8TPx6pxBCyM
Lockdown	2020-03-30	32 out of 51	North Carolina	https://files.nc.gov/governor/documents/files/E0121-Stay-at-Home-Order-3.pdf
Lockdown	2020-03-30	32 out of 51	Virginia	https://www.governor.virginia.gov/newsroom/all-releases/2020/march/headline-855702-en.html
Lockdown	2020-03-31	33 out of 51	Arizona	https://azgovernor.gov/governor/news/2020/03/stay-home-stay-healthy-stay-connected
----- <i>NPI implemented in two thirds of the regions by 2020-04-01</i>				
Lockdown	2020-04-01	36 out of 51	Florida	https://eu.floridatoday.com/story/news/2020/04/01/coronavirus-florida-stay-home-order-what-means-explanation-what-essential-non-essential-desantis/5104936002/
Lockdown	2020-04-01	36 out of 51	Pennsylvania	https://www.nytimes.com/interactive/2020/us/coronavirus-stay-at-home-order.html
Lockdown	2020-04-01	36 out of 51	Tennessee	https://publications.tnsosfiles.com/pub/execorders/exec-orders-lee22.pdf
Lockdown	2020-04-02	39 out of 51	Georgia	https://gov.georgia.gov/document/2020-executive-order/04022001/download
Lockdown	2020-04-02	39 out of 51	Maine	https://www.maine.gov/governor/mills/news/governor-mills-issues-stay-healthy-home-mandate-2020-03-31
Lockdown	2020-04-03	40 out of 51	Mississippi	https://thehill.com/homenews/state-watch/490674-mississippi-governor-issues-stay-at-home-order
Lockdown	2020-04-04	41 out of 51	Alabama	https://governor.alabama.gov/newsroom/2020/04/governor-ivey-issues-stay-at-home-order/
Lockdown	2020-04-06	42 out of 51	Missouri	https://governor.mo.gov/priorities/stay-home-order
Lockdown	2020-04-07	43 out of 51	South Carolina	http://abcnews4.com/news/local/gov-mcmaster-orders-stay-at-home-order-for-south-carolina
NPI	Date	# Effective	Region	Source
Work ban	2020-03-19	2 out of 51	California	https://www.gov.ca.gov/2020/03/19/governor-gavin-newsom-issues-stay-at-home-order/

Work ban	2020-03-19	2 out of 51	Pennsylvania	https://www.governor.pa.gov/newsroom/all-non-life-sustaining-businesses-in-pennsylvania-to-close-physical-locations-as-of-8-pm-today-to-slow-spread-of-covid-19/
Work ban	2020-03-21	4 out of 51	Illinois	https://www.nytimes.com/2020/03/21/world/coronavirus-news.html
Work ban	2020-03-21	4 out of 51	New Jersey	https://www.nj.gov/governor/news/news/562020/approved/20200320j.shtml
Work ban	2020-03-22	5 out of 51	New York	https://www.governor.ny.gov/news/no-2028-continuing-temporary-suspension-and-modification-laws-relating-disaster-emergency
Work ban	2020-03-23	12 out of 51	Connecticut	https://portal.ct.gov/Office-of-the-Governor/News/Press-Releases/2020/03-2020/Governor-Lamont-Signs-Executive-Order-Asking-Connecticut-Businesses-and-Residents-Stay-Safe
Work ban	2020-03-23	12 out of 51	Maryland	https://governor.maryland.gov/2020/03/23/governor-hogan-announces-closure-of-all-non-essential-businesses-175-million-relief-package-for-workers-and-small-businesses-affected-by-covid-19/
Work ban	2020-03-23	12 out of 51	Massachusetts	https://www.mass.gov/news/governor-charlie-baker-orders-all-non-essential-businesses-to-cessate-in-person-operation
Work ban	2020-03-23	12 out of 51	New Mexico	https://www.governor.state.nm.us/2020/03/23/state-enacts-further-restrictions-to-stop-spread-including-stay-at-home-instruction/
Work ban	2020-03-23	12 out of 51	Ohio	https://coronavirus.ohio.gov/static/DirectorsOrderStayAtHome.pdf
Work ban	2020-03-23	12 out of 51	Oregon	https://govstatus.egov.com/or-covid-19
Work ban	2020-03-23	12 out of 51	Washington	https://www.governor.wa.gov/news-media/inslee-announces-stay-home-stay-healthy%2%A0order
Work ban	2020-03-24	16 out of 51	Delaware	https://governor.delaware.gov/wp-content/uploads/sites/24/2020/03/Fourth-Modification-to-State-of-Emergency-03222020.pdf
Work ban	2020-03-24	16 out of 51	Michigan	https://www.michigan.gov/coronavirus/0,9753,7-406-98178_98455-521682--,00.html
Work ban	2020-03-24	16 out of 51	Vermont	https://governor.vermont.gov/sites/scott/files/documents/ADDENDUM%206%20TO%20EXECUTIVE%20ORDER%2001-20.pdf
Work ban	2020-03-24	16 out of 51	West Virginia	https://governor.wv.gov/News/press-releases/2020/Pages/COVID-19-UPDATE-Gov.-Justice-issues-Stay-at-Home-order-for-all-West-Virginians.aspx
Work ban	2020-03-25	21 out of 51	Hawaii	https://governor.hawaii.gov/newsroom/latest-news/office-of-the-governor-news-release-governor-ige-issues-statewide-order-to-stay-at-home-work-from-home-to-fight-covid-19/
Work ban	2020-03-25	21 out of 51	Idaho	https://www.idahostatesman.com/news/coronavirus/article241479406.html
Work ban	2020-03-25	21 out of 51	Indiana	https://www.in.gov/gov/3232.htm
Work ban	2020-03-25	21 out of 51	Oklahoma	https://www.sos.ok.gov/documents/executive/1919.pdf
Work ban	2020-03-25	21 out of 51	Wisconsin	https://content.govdelivery.com/accounts/WIGOV/bulletins/282deef

Work ban	2020-03-26	24 out of 51	Colorado	https://bloximages.newyork1.vip.townnews.com/coloradopolitics.com/content/tncms/assets/v3/editorial/1/5c/15c0d646-6efd-11ea-9f44-936924cd21a7/5e7bfea00dc56.pdf.pdf
Work ban	2020-03-26	24 out of 51	Kentucky	https://governor.ky.gov/attachments/20200325_Executive-Order_2020-257_Healthy-at-Home.pdf
Work ban	2020-03-26	24 out of 51	New Hampshire	https://www.governor.nh.gov/news-media/emergency-orders/documents/emergency-order-17-1.pdf
Work ban	2020-03-27	26 out of 51	Minnesota	https://mn.gov/governor/assets/3a.%20EO%2020-20%20FINAL%20SIGNED%20Filed_tcm1055-425020.pdf
Work ban	2020-03-28	28 out of 51	Alaska	https://gov.alaska.gov/home/covid19-healthmandates/
Work ban	2020-03-28	28 out of 51	Montana	https://news.mt.gov/governor-bullock-issues-stay-at-home-directive-to-slow-the-spread-of-covid-19
Work ban	2020-03-30	32 out of 51	District of Columbia	https://coronavirus.dc.gov/release/mayor-bowser-issues-stay-home-order
Work ban	2020-03-30	32 out of 51	Kansas	https://governor.kansas.gov/governor-kelly-issues-temporary-statewide-stay-home-order-in-ongoing-effort-to-combat-covid-19/
Work ban	2020-03-30	32 out of 51	North Carolina	https://files.nc.gov/governor/documents/files/E0121-Stay-at-Home-Order-3.pdf
Work ban	2020-03-30	32 out of 51	Rhode Island	http://www.governor.ri.gov/documents/orders/Executive-Order-20-13.pdf
Work ban	2020-04-01	33 out of 51	Tennessee	https://publications.tnsosfiles.com/pub/execorders/exec-orders-lee22.pdf
<i>NPI implemented in two thirds of the regions by 2020-04-02</i>				
Work ban	2020-04-07	35 out of 51	South Carolina	http://abcnews4.com/news/local/gov-mcmaster-orders-stay-at-home-order-for-south-carolina

Table 7: Sources for policies implemented across different US States

NPI	Date	# Effective	Region	Source
Event ban	2020-03-09	1 out of 16	Bavaria	https://www.br.de/nachrichten/bayern/coronavirus-bayern-will-grossveranstaltungen-verbieten,RslNyZ0
Event ban	2020-03-10	2 out of 16	North Rhine- Westphalia	https://www1.wdr.de/nachrichten/themen/coronavirus/veranstaltungen-coronavirus-absage-nrw-100.html
Event ban	2020-03-11	7 out of 16	Baden- Wuerttemberg	https://bnn.de/lokales/karlsruhe/baden-wuerttemberg-will-grosse-veranstaltungen-wegen-des-coronavirus-untersagen-lassen
Event ban	2020-03-11	7 out of 16	Berlin	https://www.t-online.de/nachrichten/panorama/id_87498882/coronavirus-in-diesen-bundeslaendern-sind-grossveranstaltungen-verboten.html
Event ban	2020-03-11	7 out of 16	Hamburg	https://www.t-online.de/nachrichten/panorama/id_87498882/coronavirus-in-diesen-bundeslaendern-sind-grossveranstaltungen-verboten.html
Event ban	2020-03-11	7 out of 16	Lower Saxony	https://www.t-online.de/nachrichten/panorama/id_87498882/coronavirus-in-diesen-bundeslaendern-sind-grossveranstaltungen-verboten.html
Event ban	2020-03-11	7 out of 16	Schleswig- Holstein	https://www.ndr.de/nachrichten/schleswig-holstein/Details-zur-Absage-von-Grossveranstaltungen-,pk214.html
Event ban	2020-03-12	9 out of 16	Bremen	https://www.t-online.de/nachrichten/panorama/id_87498882/coronavirus-in-diesen-bundeslaendern-sind-grossveranstaltungen-verboten.html
Event ban	2020-03-12	9 out of 16	Thuringia	https://www.mdr.de/thueringen/coronavirus-veranstaltungen-massnahmen-teilnehmer-100.html
<i>NPI implemented in two thirds of the regions by 2020-03-13</i>				
Event ban	2020-03-13	16 out of 16	Brandenburg	https://twitter.com/StM_Klose/status/1238028608469336070
Event ban	2020-03-13	16 out of 16	Hesse	https://twitter.com/StM_Klose/status/1238028608469336070
Event ban	2020-03-13	16 out of 16	Mecklenburg- Vorpommern	https://twitter.com/StM_Klose/status/1238028608469336070
Event ban	2020-03-13	16 out of 16	Rhineland- Palatinate	https://twitter.com/StM_Klose/status/1238028608469336070
Event ban	2020-03-13	16 out of 16	Saarland	https://twitter.com/StM_Klose/status/1238028608469336070
Event ban	2020-03-13	16 out of 16	Saxony	https://twitter.com/StM_Klose/status/1238028608469336070
Event ban	2020-03-13	16 out of 16	Saxony- Anhalt	https://twitter.com/StM_Klose/status/1238028608469336070
NPI	Date	# Effective	Region	Source
Gathering ban	2020-03-14	1 out of 16	Berlin	https://www.reuters.com/article/us-health-coronavirus-germany/berlin-joins-cologne-in-closing-bars-clubs-as-germany-toughens-coronavirus-response-idUSKBN2110LS

Gathering ban	2020-03-17	2 out of 16	Bavaria	https://www.reuters.com/article/us-health-coronavirus-germany-economy/merkel-says-lets-get-through-this-as-shops-bars-and-churches-shut-idUSKBN213178
<i>NPI implemented in two thirds of the regions by 2020-03-23</i>				
Gathering ban	2020-03-23	16 out of 16	Baden- Wuerttemberg	https://www.bundesregierung.de/breg-de/themen/coronavirus/faqs-neue-leitlinien-1733416
Gathering ban	2020-03-23	16 out of 16	Brandenburg	https://www.bundesregierung.de/breg-de/themen/coronavirus/faqs-neue-leitlinien-1733416
Gathering ban	2020-03-23	16 out of 16	Bremen	https://www.bundesregierung.de/breg-de/themen/coronavirus/faqs-neue-leitlinien-1733416
Gathering ban	2020-03-23	16 out of 16	Hamburg	https://www.bundesregierung.de/breg-de/themen/coronavirus/faqs-neue-leitlinien-1733416
Gathering ban	2020-03-23	16 out of 16	Hesse	https://www.bundesregierung.de/breg-de/themen/coronavirus/faqs-neue-leitlinien-1733416
Gathering ban	2020-03-23	16 out of 16	Lower Saxony	https://www.bundesregierung.de/breg-de/themen/coronavirus/faqs-neue-leitlinien-1733416
Gathering ban	2020-03-23	16 out of 16	Mecklenburg- Vorpommern	https://www.bundesregierung.de/breg-de/themen/coronavirus/faqs-neue-leitlinien-1733416
Gathering ban	2020-03-23	16 out of 16	North Rhine- Westphalia	https://www.bundesregierung.de/breg-de/themen/coronavirus/faqs-neue-leitlinien-1733416
Gathering ban	2020-03-23	16 out of 16	Rhineland- Palatinate	https://www.bundesregierung.de/breg-de/themen/coronavirus/faqs-neue-leitlinien-1733416
Gathering ban	2020-03-23	16 out of 16	Saarland	https://www.bundesregierung.de/breg-de/themen/coronavirus/faqs-neue-leitlinien-1733416
Gathering ban	2020-03-23	16 out of 16	Saxony	https://www.bundesregierung.de/breg-de/themen/coronavirus/faqs-neue-leitlinien-1733416
Gathering ban	2020-03-23	16 out of 16	Saxony- Anhalt	https://www.bundesregierung.de/breg-de/themen/coronavirus/faqs-neue-leitlinien-1733416
Gathering ban	2020-03-23	16 out of 16	Schleswig- Holstein	https://www.bundesregierung.de/breg-de/themen/coronavirus/faqs-neue-leitlinien-1733416
Gathering ban	2020-03-23	16 out of 16	Thuringia	https://www.bundesregierung.de/breg-de/themen/coronavirus/faqs-neue-leitlinien-1733416
NPI	Date	# Effective	Region	Source
<i>NPI implemented in two thirds of the regions by 2020-03-16</i>				
School closure	2020-03-16	13 out of 16	Bavaria	https://www.spiegel.de/international/germany/the-shutdown-begins-across-germany-a-3c541d1d-1d42-4672-9fdc-af6c3247df76

School closure	2020-03-16	13 out of 16	Berlin	https://www.spiegel.de/international/germany/the-shutdown-begins-across-germany-a-3c541d1d-1d42-4672-9fdc-af6c3247df76
School closure	2020-03-16	13 out of 16	Bremen	https://www.spiegel.de/international/germany/the-shutdown-begins-across-germany-a-3c541d1d-1d42-4672-9fdc-af6c3247df76
School closure	2020-03-16	13 out of 16	Hamburg	https://www.spiegel.de/international/germany/the-shutdown-begins-across-germany-a-3c541d1d-1d42-4672-9fdc-af6c3247df76
School closure	2020-03-16	13 out of 16	Hesse	https://www.spiegel.de/international/germany/the-shutdown-begins-across-germany-a-3c541d1d-1d42-4672-9fdc-af6c3247df76
School closure	2020-03-16	13 out of 16	Lower Saxony	https://www.spiegel.de/international/germany/the-shutdown-begins-across-germany-a-3c541d1d-1d42-4672-9fdc-af6c3247df76
School closure	2020-03-16	13 out of 16	Mecklenburg-Vorpommern	https://www.spiegel.de/international/germany/the-shutdown-begins-across-germany-a-3c541d1d-1d42-4672-9fdc-af6c3247df76
School closure	2020-03-16	13 out of 16	North Rhine- Westphalia	https://www.spiegel.de/international/germany/the-shutdown-begins-across-germany-a-3c541d1d-1d42-4672-9fdc-af6c3247df76
School closure	2020-03-16	13 out of 16	Rhineland- Palatinate	https://www.spiegel.de/international/germany/the-shutdown-begins-across-germany-a-3c541d1d-1d42-4672-9fdc-af6c3247df76
School closure	2020-03-16	13 out of 16	Saarland	https://www.spiegel.de/international/germany/the-shutdown-begins-across-germany-a-3c541d1d-1d42-4672-9fdc-af6c3247df76
School closure	2020-03-16	13 out of 16	Saxony	https://www.spiegel.de/international/germany/germany-states-move-to-close-educational-and-daycare-facilities-a-e9c13296-002b-484b-88bc-e14ea295ff10
School closure	2020-03-16	13 out of 16	Saxony- Anhalt	https://www.spiegel.de/international/germany/the-shutdown-begins-across-germany-a-3c541d1d-1d42-4672-9fdc-af6c3247df76
School closure	2020-03-16	13 out of 16	Schleswig- Holstein	https://www.spiegel.de/international/germany/the-shutdown-begins-across-germany-a-3c541d1d-1d42-4672-9fdc-af6c3247df76
School closure	2020-03-17	15 out of 16	Baden- Wuerttemberg	https://www.spiegel.de/international/germany/the-shutdown-begins-across-germany-a-3c541d1d-1d42-4672-9fdc-af6c3247df76
School closure	2020-03-17	15 out of 16	Thuringia	https://www.spiegel.de/international/germany/the-shutdown-begins-across-germany-a-3c541d1d-1d42-4672-9fdc-af6c3247df76
School closure	2020-03-18	16 out of 16	Brandenburg	https://www.spiegel.de/international/germany/the-shutdown-begins-across-germany-a-3c541d1d-1d42-4672-9fdc-af6c3247df76
NPI	Date	# Effective	Region	Source
Venue closure	2020-03-14	2 out of 16	Berlin	https://www.reuters.com/article/us-health-coronavirus-germany/berlin-joins-cologne-in-closing-bars-clubs-as-germany-toughens-coronavirus-response-idUSKBN2110LS

Venue closure	2020-03-14	2 out of 16	Saarland	https://www.reuters.com/article/us-health-coronavirus-germany/berlin-joins-cologne-in-closing-bars-clubs-as-germany-toughens-coronavirus-response-idUSKBN2110LS
<i>NPI implemented in two thirds of the regions by 2020-03-16</i>				
Venue closure	2020-03-16	16 out of 16	Baden- Wuerttemberg	https://www.bundesregierung.de/breg-de/themen/coronavirus/leitlinien-bund-laender-1731000
Venue closure	2020-03-16	16 out of 16	Bavaria	https://www.bundesregierung.de/breg-de/themen/coronavirus/leitlinien-bund-laender-1731000
Venue closure	2020-03-16	16 out of 16	Brandenburg	https://www.bundesregierung.de/breg-de/themen/coronavirus/leitlinien-bund-laender-1731000
Venue closure	2020-03-16	16 out of 16	Bremen	https://www.bundesregierung.de/breg-de/themen/coronavirus/leitlinien-bund-laender-1731000
Venue closure	2020-03-16	16 out of 16	Hamburg	https://www.bundesregierung.de/breg-de/themen/coronavirus/leitlinien-bund-laender-1731000
Venue closure	2020-03-16	16 out of 16	Hesse	https://www.bundesregierung.de/breg-de/themen/coronavirus/leitlinien-bund-laender-1731000
Venue closure	2020-03-16	16 out of 16	Lower Saxony	https://www.bundesregierung.de/breg-de/themen/coronavirus/leitlinien-bund-laender-1731000
Venue closure	2020-03-16	16 out of 16	Mecklenburg-Vorpommern	https://www.bundesregierung.de/breg-de/themen/coronavirus/leitlinien-bund-laender-1731000
Venue closure	2020-03-16	16 out of 16	North Rhine- Westphalia	https://www.bundesregierung.de/breg-de/themen/coronavirus/leitlinien-bund-laender-1731000
Venue closure	2020-03-16	16 out of 16	Rhineland- Palatinate	https://www.bundesregierung.de/breg-de/themen/coronavirus/leitlinien-bund-laender-1731000
Venue closure	2020-03-16	16 out of 16	Saxony	https://www.bundesregierung.de/breg-de/themen/coronavirus/leitlinien-bund-laender-1731000
Venue closure	2020-03-16	16 out of 16	Saxony- Anhalt	https://www.bundesregierung.de/breg-de/themen/coronavirus/leitlinien-bund-laender-1731000
Venue closure	2020-03-16	16 out of 16	Schleswig- Holstein	https://www.bundesregierung.de/breg-de/themen/coronavirus/leitlinien-bund-laender-1731000
Venue closure	2020-03-16	16 out of 16	Thuringia	https://www.bundesregierung.de/breg-de/themen/coronavirus/leitlinien-bund-laender-1731000
NPI	Date	# Effective	Region	Source
Lockdown	2020-03-21	1 out of 16	Bavaria	https://www.corona-katastrophenschutz.bayern.de/
<i>Two-thirds quota not reached; NPI not implemented on national level</i>				

NPI	Date	# Effective	Region	Source
Work ban	<i>NPI implemented in no region</i>			

Table 8: Sources for policies implemented across different German regions

NPI	Date	# Effective	Region	Source
Event ban	2020-03-10	2 out of 17	Community of Madrid	https://www.eldiario.es/sociedad/Sanidad-consejo-ministros-medidas_0_1004400105.html
Event ban	2020-03-10	2 out of 17	La Rioja	https://www.eldiario.es/sociedad/Sanidad-consejo-ministros-medidas_0_1004400105.html
Event ban	2020-03-12	3 out of 17	Catalonia	https://www.catalannews.com/society-science/item/catalonia-bans-events-of-over-1000-people-in-efforts-to-control-coronavirus
<i>NPI implemented in two thirds of the regions by 2020-03-13</i>				
Event ban	2020-03-13	17 out of 17	Andalusia	https://elpais.com/sociedad/2020-03-12/el-gobierno-extiende-a-toda-espana-la-recomendacion-de-cancelar-clases-y-celebrar-eventos-masivos-en-espacios-cerrados.html
Event ban	2020-03-13	17 out of 17	Aragon	https://elpais.com/sociedad/2020-03-12/el-gobierno-extiende-a-toda-espana-la-recomendacion-de-cancelar-clases-y-celebrar-eventos-masivos-en-espacios-cerrados.html
Event ban	2020-03-13	17 out of 17	Asturias	https://elpais.com/sociedad/2020-03-12/el-gobierno-extiende-a-toda-espana-la-recomendacion-de-cancelar-clases-y-celebrar-eventos-masivos-en-espacios-cerrados.html
Event ban	2020-03-13	17 out of 17	Balearic Islands	https://elpais.com/sociedad/2020-03-12/el-gobierno-extiende-a-toda-espana-la-recomendacion-de-cancelar-clases-y-celebrar-eventos-masivos-en-espacios-cerrados.html
Event ban	2020-03-13	17 out of 17	Basque Country	https://elpais.com/sociedad/2020-03-12/el-gobierno-extiende-a-toda-espana-la-recomendacion-de-cancelar-clases-y-celebrar-eventos-masivos-en-espacios-cerrados.html
Event ban	2020-03-13	17 out of 17	Canary Islands	https://elpais.com/sociedad/2020-03-12/el-gobierno-extiende-a-toda-espana-la-recomendacion-de-cancelar-clases-y-celebrar-eventos-masivos-en-espacios-cerrados.html
Event ban	2020-03-13	17 out of 17	Cantabria	https://elpais.com/sociedad/2020-03-12/el-gobierno-extiende-a-toda-espana-la-recomendacion-de-cancelar-clases-y-celebrar-eventos-masivos-en-espacios-cerrados.html
Event ban	2020-03-13	17 out of 17	Castille and Leon	https://elpais.com/sociedad/2020-03-12/el-gobierno-extiende-a-toda-espana-la-recomendacion-de-cancelar-clases-y-celebrar-eventos-masivos-en-espacios-cerrados.html
Event ban	2020-03-13	17 out of 17	Castille- La Mancha	https://elpais.com/sociedad/2020-03-12/el-gobierno-extiende-a-toda-espana-la-recomendacion-de-cancelar-clases-y-celebrar-eventos-masivos-en-espacios-cerrados.html

Event ban	2020-03-13	17 out of 17	Extremadura	https://elpais.com/sociedad/2020-03-12/el-gobierno-extiende-a-toda-espana-la-recomendacion-de-cancelar-clases-y-celebrar-eventos-masivos-en-espacios-cerrados.html
Event ban	2020-03-13	17 out of 17	Galicia	https://elpais.com/sociedad/2020-03-12/el-gobierno-extiende-a-toda-espana-la-recomendacion-de-cancelar-clases-y-celebrar-eventos-masivos-en-espacios-cerrados.html
Event ban	2020-03-13	17 out of 17	Navarre	https://elpais.com/sociedad/2020-03-12/el-gobierno-extiende-a-toda-espana-la-recomendacion-de-cancelar-clases-y-celebrar-eventos-masivos-en-espacios-cerrados.html
Event ban	2020-03-13	17 out of 17	Region of Murcia	https://elpais.com/sociedad/2020-03-12/el-gobierno-extiende-a-toda-espana-la-recomendacion-de-cancelar-clases-y-celebrar-eventos-masivos-en-espacios-cerrados.html
Event ban	2020-03-13	17 out of 17	Valencian Community	https://elpais.com/sociedad/2020-03-12/el-gobierno-extiende-a-toda-espana-la-recomendacion-de-cancelar-clases-y-celebrar-eventos-masivos-en-espacios-cerrados.html

NPI	Date	# Effective	Region	Source
<i>NPI implemented in two thirds of the regions by 2020-03-15</i>				
Gathering ban	2020-03-15	17 out of 17	Andalusia	https://www.cnn.com/2020/03/14/spain-declares-state-of-emergency-due-to-coronavirus.html
Gathering ban	2020-03-15	17 out of 17	Aragon	https://www.cnn.com/2020/03/14/spain-declares-state-of-emergency-due-to-coronavirus.html
Gathering ban	2020-03-15	17 out of 17	Asturias	https://www.cnn.com/2020/03/14/spain-declares-state-of-emergency-due-to-coronavirus.html
Gathering ban	2020-03-15	17 out of 17	Balearic Islands	https://www.cnn.com/2020/03/14/spain-declares-state-of-emergency-due-to-coronavirus.html
Gathering ban	2020-03-15	17 out of 17	Basque Country	https://www.cnn.com/2020/03/14/spain-declares-state-of-emergency-due-to-coronavirus.html
Gathering ban	2020-03-15	17 out of 17	Canary Islands	https://www.cnn.com/2020/03/14/spain-declares-state-of-emergency-due-to-coronavirus.html
Gathering ban	2020-03-15	17 out of 17	Cantabria	https://www.cnn.com/2020/03/14/spain-declares-state-of-emergency-due-to-coronavirus.html
Gathering ban	2020-03-15	17 out of 17	Castille and Leon	https://www.cnn.com/2020/03/14/spain-declares-state-of-emergency-due-to-coronavirus.html
Gathering ban	2020-03-15	17 out of 17	Castille- La Mancha	https://www.cnn.com/2020/03/14/spain-declares-state-of-emergency-due-to-coronavirus.html

Gathering ban	2020-03-15	17 out of 17	Catalonia	https://www.cnbc.com/2020/03/14/spain-declares-state-of-emergency-due-to-coronavirus.html
Gathering ban	2020-03-15	17 out of 17	Community of Madrid	https://www.cnbc.com/2020/03/14/spain-declares-state-of-emergency-due-to-coronavirus.html
Gathering ban	2020-03-15	17 out of 17	Extremadura	https://www.cnbc.com/2020/03/14/spain-declares-state-of-emergency-due-to-coronavirus.html
Gathering ban	2020-03-15	17 out of 17	Galicia	https://www.cnbc.com/2020/03/14/spain-declares-state-of-emergency-due-to-coronavirus.html
Gathering ban	2020-03-15	17 out of 17	La Rioja	https://www.cnbc.com/2020/03/14/spain-declares-state-of-emergency-due-to-coronavirus.html
Gathering ban	2020-03-15	17 out of 17	Navarre	https://www.cnbc.com/2020/03/14/spain-declares-state-of-emergency-due-to-coronavirus.html
Gathering ban	2020-03-15	17 out of 17	Region of Murcia	https://www.cnbc.com/2020/03/14/spain-declares-state-of-emergency-due-to-coronavirus.html
Gathering ban	2020-03-15	17 out of 17	Valencian Community	https://www.cnbc.com/2020/03/14/spain-declares-state-of-emergency-due-to-coronavirus.html

NPI	Date	# Effective	Region	Source
School closure	2020-03-11	2 out of 17	Community of Madrid	https://english.elpais.com/society/2020-03-09/madrid-basque-city-close-schools-as-coronavirus-continues-spread-in-spain.html
School closure	2020-03-11	2 out of 17	La Rioja	https://www.thestar.com.my/news/world/2020/03/10/spain039s-la-rioja-region-orders-schools-shutdown-as-coronavirus-spreads
School closure	2020-03-13	6 out of 17	Basque Country	https://english.elpais.com/society/2020-03-12/basque-country-galicia-and-murcia-close-schools-in-bid-to-slow-coronavirus.html
School closure	2020-03-13	6 out of 17	Canary Islands	https://english.elpais.com/society/2020-03-12/basque-country-galicia-and-murcia-close-schools-in-bid-to-slow-coronavirus.html
School closure	2020-03-13	6 out of 17	Catalonia	https://english.elpais.com/society/2020-03-12/basque-country-galicia-and-murcia-close-schools-in-bid-to-slow-coronavirus.html
School closure	2020-03-13	6 out of 17	Galicia	https://english.elpais.com/society/2020-03-12/basque-country-galicia-and-murcia-close-schools-in-bid-to-slow-coronavirus.html
<i>NPI implemented in two thirds of the regions by 2020-03-16</i>				
School closure	2020-03-16	17 out of 17	Andalusia	https://english.elpais.com/society/2020-03-12/basque-country-galicia-and-murcia-close-schools-in-bid-to-slow-coronavirus.html
School closure	2020-03-16	17 out of 17	Aragon	https://english.elpais.com/society/2020-03-12/basque-country-galicia-and-murcia-close-schools-in-bid-to-slow-coronavirus.html

School closure	2020-03-16	17 out of 17	Asturias	https://english.elpais.com/society/2020-03-12/basque-country-galicia-and-murcia-close-schools-in-bid-to-slow-coronavirus.html
School closure	2020-03-16	17 out of 17	Balearic Islands	https://english.elpais.com/society/2020-03-12/basque-country-galicia-and-murcia-close-schools-in-bid-to-slow-coronavirus.html
School closure	2020-03-16	17 out of 17	Cantabria	https://english.elpais.com/society/2020-03-12/basque-country-galicia-and-murcia-close-schools-in-bid-to-slow-coronavirus.html
School closure	2020-03-16	17 out of 17	Castille and Leon	https://english.elpais.com/society/2020-03-12/basque-country-galicia-and-murcia-close-schools-in-bid-to-slow-coronavirus.html
School closure	2020-03-16	17 out of 17	Castille- La Mancha	https://english.elpais.com/society/2020-03-12/basque-country-galicia-and-murcia-close-schools-in-bid-to-slow-coronavirus.html
School closure	2020-03-16	17 out of 17	Extremadura	https://english.elpais.com/society/2020-03-12/basque-country-galicia-and-murcia-close-schools-in-bid-to-slow-coronavirus.html
School closure	2020-03-16	17 out of 17	Navarre	https://english.elpais.com/society/2020-03-12/basque-country-galicia-and-murcia-close-schools-in-bid-to-slow-coronavirus.html
School closure	2020-03-16	17 out of 17	Region of Murcia	https://english.elpais.com/society/2020-03-12/basque-country-galicia-and-murcia-close-schools-in-bid-to-slow-coronavirus.html
School closure	2020-03-16	17 out of 17	Valencian Community	https://english.elpais.com/society/2020-03-12/basque-country-galicia-and-murcia-close-schools-in-bid-to-slow-coronavirus.html
NPI	Date	# Effective	Region	Source
Venue closure	2020-03-13	4 out of 17	Cantabria	https://www.eldiario.es/cantabria/ultima-hora/Cantabria-hosteleria-superficies-edificios-actividades_0_1005450439.html
Venue closure	2020-03-13	4 out of 17	Castille and Leon	https://twitter.com/FranciscoIgea/status/1238571610468220929
Venue closure	2020-03-13	4 out of 17	Catalonia	https://elpais.com/espana/catalunya/2020-03-13/cataluna-cierra-pistas-de-esqui-discotecas-y-areas-comerciales-que-no-sean-de-alimentacion.html
Venue closure	2020-03-13	4 out of 17	Galicia	https://www.nytimes.com/aponline/2020/03/14/world/europe/ap-eu-virus-outbreak-spain.html
Venue closure	2020-03-14	7 out of 17	Asturias	https://cadenaser.com/emisora/2020/03/13/ser_gijon/1584138177_171951.html
Venue closure	2020-03-14	7 out of 17	Community of Madrid	https://english.elpais.com/society/2020-03-13/madrid-orders-restaurants-and-bars-to-close-from-saturday-onward-to-slow-coronavirus-spread.html
Venue closure	2020-03-14	7 out of 17	Valencian Community	https://english.elpais.com/society/2020-03-13/madrid-orders-restaurants-and-bars-to-close-from-saturday-onward-to-slow-coronavirus-spread.html
<i>NPI implemented in two thirds of the regions by 2020-03-15</i>				
Venue closure	2020-03-15	17 out of 17	Andalusia	https://www.cncb.com/2020/03/14/spain-declares-state-of-emergency-due-to-coronavirus.html

Venue closure	2020-03-15	17 out of 17	Aragon	https://www.cnb.com/2020/03/14/spain-declares-state-of-emergency-due-to-coronavirus.html
Venue closure	2020-03-15	17 out of 17	Balearic Islands	https://www.cnb.com/2020/03/14/spain-declares-state-of-emergency-due-to-coronavirus.html
Venue closure	2020-03-15	17 out of 17	Basque Country	https://www.cnb.com/2020/03/14/spain-declares-state-of-emergency-due-to-coronavirus.html
Venue closure	2020-03-15	17 out of 17	Canary Islands	https://www.cnb.com/2020/03/14/spain-declares-state-of-emergency-due-to-coronavirus.html
Venue closure	2020-03-15	17 out of 17	Castille- La Mancha	https://www.cnb.com/2020/03/14/spain-declares-state-of-emergency-due-to-coronavirus.html
Venue closure	2020-03-15	17 out of 17	Extremadura	https://www.cnb.com/2020/03/14/spain-declares-state-of-emergency-due-to-coronavirus.html
Venue closure	2020-03-15	17 out of 17	La Rioja	https://www.cnb.com/2020/03/14/spain-declares-state-of-emergency-due-to-coronavirus.html
Venue closure	2020-03-15	17 out of 17	Navarre	https://www.cnb.com/2020/03/14/spain-declares-state-of-emergency-due-to-coronavirus.html
Venue closure	2020-03-15	17 out of 17	Region of Murcia	https://www.cnb.com/2020/03/14/spain-declares-state-of-emergency-due-to-coronavirus.html

NPI	Date	# Effective	Region	Source
<i>NPI implemented in two thirds of the regions by 2020-03-15</i>				
Lockdown	2020-03-15	17 out of 17	Andalusia	https://www.cnb.com/2020/03/14/spain-declares-state-of-emergency-due-to-coronavirus.html
Lockdown	2020-03-15	17 out of 17	Aragon	https://www.cnb.com/2020/03/14/spain-declares-state-of-emergency-due-to-coronavirus.html
Lockdown	2020-03-15	17 out of 17	Asturias	https://www.cnb.com/2020/03/14/spain-declares-state-of-emergency-due-to-coronavirus.html
Lockdown	2020-03-15	17 out of 17	Balearic Islands	https://www.cnb.com/2020/03/14/spain-declares-state-of-emergency-due-to-coronavirus.html
Lockdown	2020-03-15	17 out of 17	Basque Country	https://www.cnb.com/2020/03/14/spain-declares-state-of-emergency-due-to-coronavirus.html
Lockdown	2020-03-15	17 out of 17	Canary Islands	https://www.cnb.com/2020/03/14/spain-declares-state-of-emergency-due-to-coronavirus.html
Lockdown	2020-03-15	17 out of 17	Cantabria	https://www.cnb.com/2020/03/14/spain-declares-state-of-emergency-due-to-coronavirus.html

Lockdown	2020-03-15	17 out of 17	Castille and Leon	https://www.cnbc.com/2020/03/14/spain-declares-state-of-emergency-due-to-coronavirus.html
Lockdown	2020-03-15	17 out of 17	Castille- La Mancha	https://www.cnbc.com/2020/03/14/spain-declares-state-of-emergency-due-to-coronavirus.html
Lockdown	2020-03-15	17 out of 17	Catalonia	https://www.cnbc.com/2020/03/14/spain-declares-state-of-emergency-due-to-coronavirus.html
Lockdown	2020-03-15	17 out of 17	Community of Madrid	https://www.cnbc.com/2020/03/14/spain-declares-state-of-emergency-due-to-coronavirus.html
Lockdown	2020-03-15	17 out of 17	Extremadura	https://www.cnbc.com/2020/03/14/spain-declares-state-of-emergency-due-to-coronavirus.html
Lockdown	2020-03-15	17 out of 17	Galicia	https://www.cnbc.com/2020/03/14/spain-declares-state-of-emergency-due-to-coronavirus.html
Lockdown	2020-03-15	17 out of 17	La Rioja	https://www.cnbc.com/2020/03/14/spain-declares-state-of-emergency-due-to-coronavirus.html
Lockdown	2020-03-15	17 out of 17	Navarre	https://www.cnbc.com/2020/03/14/spain-declares-state-of-emergency-due-to-coronavirus.html
Lockdown	2020-03-15	17 out of 17	Region of Murcia	https://www.cnbc.com/2020/03/14/spain-declares-state-of-emergency-due-to-coronavirus.html
Lockdown	2020-03-15	17 out of 17	Valencian Community	https://www.cnbc.com/2020/03/14/spain-declares-state-of-emergency-due-to-coronavirus.html

NPI	Date	# Effective	Region	Source
<i>NPI implemented in two thirds of the regions by 2020-03-30</i>				
Work ban	2020-03-30	17 out of 17	Andalusia	https://elpais.com/espana/2020-03-28/el-gobierno-amplia-el-confinamiento-los-trabajadores-de-actividades-no-esenciales-deberan-quedarse-en-casa.html
Work ban	2020-03-30	17 out of 17	Aragon	https://elpais.com/espana/2020-03-28/el-gobierno-amplia-el-confinamiento-los-trabajadores-de-actividades-no-esenciales-deberan-quedarse-en-casa.html
Work ban	2020-03-30	17 out of 17	Asturias	https://elpais.com/espana/2020-03-28/el-gobierno-amplia-el-confinamiento-los-trabajadores-de-actividades-no-esenciales-deberan-quedarse-en-casa.html
Work ban	2020-03-30	17 out of 17	Balearic Islands	https://elpais.com/espana/2020-03-28/el-gobierno-amplia-el-confinamiento-los-trabajadores-de-actividades-no-esenciales-deberan-quedarse-en-casa.html
Work ban	2020-03-30	17 out of 17	Basque Country	https://elpais.com/espana/2020-03-28/el-gobierno-amplia-el-confinamiento-los-trabajadores-de-actividades-no-esenciales-deberan-quedarse-en-casa.html
Work ban	2020-03-30	17 out of 17	Canary Islands	https://elpais.com/espana/2020-03-28/el-gobierno-amplia-el-confinamiento-los-trabajadores-de-actividades-no-esenciales-deberan-quedarse-en-casa.html

Work ban	2020-03-30	17 out of 17	Cantabria	https://elpais.com/espana/2020-03-28/el-gobierno-amplia-el-confinamiento-los-trabajadores-de-actividades-no-esenciales-deberan-quedarse-en-casa.html
Work ban	2020-03-30	17 out of 17	Castille and Leon	https://elpais.com/espana/2020-03-28/el-gobierno-amplia-el-confinamiento-los-trabajadores-de-actividades-no-esenciales-deberan-quedarse-en-casa.html
Work ban	2020-03-30	17 out of 17	Castille- La Mancha	https://elpais.com/espana/2020-03-28/el-gobierno-amplia-el-confinamiento-los-trabajadores-de-actividades-no-esenciales-deberan-quedarse-en-casa.html
Work ban	2020-03-30	17 out of 17	Catalonia	https://elpais.com/espana/2020-03-28/el-gobierno-amplia-el-confinamiento-los-trabajadores-de-actividades-no-esenciales-deberan-quedarse-en-casa.html
Work ban	2020-03-30	17 out of 17	Community of Madrid	https://elpais.com/espana/2020-03-28/el-gobierno-amplia-el-confinamiento-los-trabajadores-de-actividades-no-esenciales-deberan-quedarse-en-casa.html
Work ban	2020-03-30	17 out of 17	Extremadura	https://elpais.com/espana/2020-03-28/el-gobierno-amplia-el-confinamiento-los-trabajadores-de-actividades-no-esenciales-deberan-quedarse-en-casa.html
Work ban	2020-03-30	17 out of 17	Galicia	https://elpais.com/espana/2020-03-28/el-gobierno-amplia-el-confinamiento-los-trabajadores-de-actividades-no-esenciales-deberan-quedarse-en-casa.html
Work ban	2020-03-30	17 out of 17	La Rioja	https://elpais.com/espana/2020-03-28/el-gobierno-amplia-el-confinamiento-los-trabajadores-de-actividades-no-esenciales-deberan-quedarse-en-casa.html
Work ban	2020-03-30	17 out of 17	Navarre	https://elpais.com/espana/2020-03-28/el-gobierno-amplia-el-confinamiento-los-trabajadores-de-actividades-no-esenciales-deberan-quedarse-en-casa.html
Work ban	2020-03-30	17 out of 17	Region of Murcia	https://elpais.com/espana/2020-03-28/el-gobierno-amplia-el-confinamiento-los-trabajadores-de-actividades-no-esenciales-deberan-quedarse-en-casa.html
Work ban	2020-03-30	17 out of 17	Valencian Community	https://elpais.com/espana/2020-03-28/el-gobierno-amplia-el-confinamiento-los-trabajadores-de-actividades-no-esenciales-deberan-quedarse-en-casa.html

Table 9: Sources for policies implemented across different Spanish regions

NPI	Date	# Effective	Region	Source
Event ban	2020-03-12	3 out of 12	Alberta	https://www.alberta.ca/release.cfm?xID=6980324A5B1B0-BC2C-40A8-A6AD9E30E3189425
Event ban	2020-03-12	3 out of 12	British Columbia	https://news.gov.bc.ca/releases/2020HLTH0077-000484
Event ban	2020-03-12	3 out of 12	New Brunswick	https://www2.gnb.ca/content/gnb/en/news/news_release.2020.03.0114.html
Event ban	2020-03-13	6 out of 12	Manitoba	https://news.gov.mb.ca/news/index.html?item=46933&posted=2020-03-13
Event ban	2020-03-13	6 out of 12	Newfoundland and Labrador	https://www.gov.nl.ca/releases/2020/tcii/0313n04/
Event ban	2020-03-13	6 out of 12	Ontario	https://news.ontario.ca/mtc/en/2020/03/statement-from-minister-elliott-and-minister-macleod-on-the-2019-novel-coronavirus-covid-19-1.html
Event ban	2020-03-14	7 out of 12	Quebec	http://www.fil-information.gouv.qc.ca/Pages/Article.aspx?lang=en&motsCles=Covid&listeThe=&listeReg=&listeDiff=&type=&dateDebut=2019-09-28&dateFin=2020-03-28&afficherResultats=oui&Page=5&idArticle=2803149905
<i>NPI implemented in two thirds of the regions by 2020-03-15</i>				
Event ban	2020-03-15	8 out of 12	Nova Scotia	https://novascotia.ca/news/release/?id=20200315002
Event ban	2020-03-16	11 out of 12	Prince Edward Island	https://www.princeedwardisland.ca/en/news/premier-announces-initial-financial-support-declares-public-health-emergency
Event ban	2020-03-16	11 out of 12	Saskatchewan	https://www.saskatchewan.ca/government/news-and-media/2020/march/13/further-measures-for-covid-19
Event ban	2020-03-16	11 out of 12	Yukon	https://yukon.ca/en/news/chief-medical-officer-health-recommends-broad-new-measures-yukon
Event ban	2020-03-22	12 out of 12	Northwest Territories	https://www.hss.gov.nt.ca/en/newsroom/all-gatherings-are-advised-cancel-effective-immediately
NPI	Date	# Effective	Region	Source
Gathering ban	2020-03-16	1 out of 12	Prince Edward Island	https://www.princeedwardisland.ca/en/news/premier-announces-initial-financial-support-declares-public-health-emergency
Gathering ban	2020-03-19	2 out of 12	New Brunswick	https://www2.gnb.ca/content/gnb/en/news/news_release.2020.03.0139.html
Gathering ban	2020-03-20	3 out of 12	Saskatchewan	https://www.saskatchewan.ca/government/news-and-media/2020/march/20/covid-19-update-march-20
Gathering ban	2020-03-21	4 out of 12	Quebec	http://www.fil-information.gouv.qc.ca/Pages/Article.aspx?lang=en&motsCles=Covid&listeThe=&listeReg=&listeDiff=&type=&dateDebut=2019-09-28&dateFin=2020-03-28&afficherResultats=oui&Page=2&idArticle=2803211636
Gathering ban	2020-03-22	6 out of 12	Nova Scotia	https://dailyhive.com/vancouver/nova-scotia-coronavirus-state-of-emergency
Gathering ban	2020-03-22	6 out of 12	Yukon	https://yukon.ca/en/news/yukons-chief-medical-officer-health-provides-update-covid-19-0

Gathering ban 2020-03-27 7 out of 12 Alberta <https://www.cbc.ca/news/canada/edmonton/alberta-covid-19-coronavirus-deena-hinshaw-1.5512445>

NPI implemented in two thirds of the regions by 2020-03-28

Gathering ban 2020-03-28 8 out of 12 Ontario <https://globalnews.ca/news/6746181/ontario-ban-gatherings/>

Gathering ban 2020-03-31 9 out of 12 Newfoundland and Labrador <https://www.gov.nl.ca/covid-19/faqs/>

Gathering ban 2020-04-01 10 out of 12 Manitoba <https://news.gov.mb.ca/news/index.html?item=47337&posted=2020-03-30>

Gathering ban 2020-04-11 11 out of 12 Northwest Territories <https://www.gov.nt.ca/en/newsroom/two-new-orders-nwt-chief-public-health-officer-strengthen-response-covid-19-pandemic>

NPI	Date	# Effective	Region	Source
School closure	2020-03-13	1 out of 12	New Brunswick	https://www2.gnb.ca/content/gnb/en/news/news_release.2020.03.0117.html
School closure	2020-03-14	2 out of 12	Quebec	http://www.fil-information.gouv.qc.ca/Pages/Article.aspx?lang=en&motsCles=Covid&listeThe=&listeReg=&listeDiff=&type=&dateDebut=2019-09-28&dateFin=2020-03-28&afficherResultats=oui&Page=6&idArticle=2803137507
School closure	2020-03-15	3 out of 12	Alberta	https://www.alberta.ca/release.cfm?xID=69818C355F188-C2A3-F5C6-875A2A33929D5C05
School closure	2020-03-16	7 out of 12	Newfoundland and Labrador	https://www.gov.nl.ca/releases/2020/eecd/0316n04/
School closure	2020-03-16	7 out of 12	Northwest Territories	https://cabinradio.ca/32133/news/education/nwt-tells-schools-to-close-until-after-easter-daycares-unaffected/
School closure	2020-03-16	7 out of 12	Ontario	https://news.ontario.ca/maesd/en/2020/03/statement-from-minister-elliott-and-minister-romano-on-the-2019-novel-coronavirus-covid-19.html
School closure	2020-03-16	7 out of 12	Saskatchewan	https://www.saskatchewan.ca/government/news-and-media/2020/march/16/class-suspensions
----- <i>NPI implemented in two thirds of the regions by 2020-03-17</i>				
School closure	2020-03-17	10 out of 12	British Columbia	https://news.gov.bc.ca/releases/2020EMBC0014-000552
School closure	2020-03-17	10 out of 12	Nova Scotia	https://novascotia.ca/news/release/?id=20200315002
School closure	2020-03-17	10 out of 12	Prince Edward Island	https://www.princeedwardisland.ca/en/news/province-announces-covid-19-related-closures
School closure	2020-03-18	11 out of 12	Yukon	https://yukon.ca/en/news/chief-medical-officer-health-declares-public-health-emergency
School closure	2020-03-23	12 out of 12	Manitoba	https://news.gov.mb.ca/news/index.html?item=46936&posted=2020-03-14
NPI	Date	# Effective	Region	Source

Venue closure	2020-03-15	1 out of 12	Quebec	http://www.fil-information.gouv.qc.ca/Pages/Article.aspx?lang=en&motsCles=Covid&listeThe=&listeReg=&listeDiff=&type=&dateDebut=2019-09-28&dateFin=2020-03-28&afficherResultats=oui&Page=5&idArticle=2803159403
Venue closure	2020-03-16	2 out of 12	Ontario	https://news.ontario.ca/mohlhc/en/2020/03/enhanced-measures-to-protect-ontarians-from-covid-19.html
Venue closure	2020-03-17	6 out of 12	Alberta	https://www.alberta.ca/release.cfm?xID=69828242A5FFC-D75A-C83E-690D8028C0C4E09F
Venue closure	2020-03-17	6 out of 12	British Columbia	https://news.gov.bc.ca/releases/2020EMBC0014-000552
Venue closure	2020-03-17	6 out of 12	New Brunswick	https://www2.gnb.ca/content/gnb/en/news/news_release.2020.03.0127.html
Venue closure	2020-03-17	6 out of 12	Prince Edward Island	https://www.princeedwardisland.ca/en/news/chief-public-health-officer-urges-islanders-work-together-reduce-spread-covid-19
Venue closure	2020-03-19	7 out of 12	Nova Scotia	https://novascotia.ca/news/release/?id=20200317005
<i>NPI implemented in two thirds of the regions by 2020-03-20</i>				
Venue closure	2020-03-20	8 out of 12	Saskatchewan	https://www.saskatchewan.ca/government/news-and-media/2020/march/20/covid-19-update-march-20
Venue closure	2020-03-22	9 out of 12	Northwest Territories	https://www.hss.gov.nt.ca/en/newsroom/all-gatherings-are-advised-cancel-effective-immediately
Venue closure	2020-03-23	10 out of 12	Newfoundland and Labrador	https://www.gov.nl.ca/covid-19/
Venue closure	2020-03-25	11 out of 12	Yukon	https://yukon.ca/en/news/yukons-chief-medical-officer-health-provides-update-covid-19-0
Venue closure	2020-04-01	12 out of 12	Manitoba	https://news.gov.mb.ca/news/index.html?item=47337&posted=2020-03-30
NPI	Date	# Effective	Region	Source
Lockdown	2020-03-29	1 out of 12	New Brunswick	https://www2.gnb.ca/content/gnb/en/news/news_release.2020.03.0164.html
Lockdown	2020-03-30	2 out of 12	Ontario	https://news.ontario.ca/mohlhc/en/2020/03/statement-from-the-chief-medical-officer-of-health.html
<i>Two-thirds quota not reached; NPI not implemented on national level</i>				
NPI	Date	# Effective	Region	Source
Work ban	2020-03-24	1 out of 12	Ontario	https://news.ontario.ca/opo/en/2020/03/ontario-closing-at-risk-workplaces-to-protect-health-and-safety.html
Work ban	2020-03-27	2 out of 12	Prince Edward Island	https://www.princeedwardisland.ca/en/news/prince-edward-island-extends-closures-for-schools-daycares-non-essential-services
Work ban	2020-04-01	3 out of 12	Manitoba	https://news.gov.mb.ca/news/index.html?item=47337&posted=2020-03-30
<i>Two-thirds quota not reached; NPI not implemented on national level</i>				

Table 10: Sources for policies implemented across different Canadian regions

NPI	Date	# Effective	Region	Source
<i>NPI implemented in two thirds of the regions by 2020-03-16</i>				
Event ban	2020-03-16	8 out of 8	Western Australia	https://www.watoday.com.au/politics/federal/effective-ban-on-non-essential-mass-gatherings-of-500-people-20200313-p549u5.html
Event ban	2020-03-16	8 out of 8	Northern Territory	https://www.watoday.com.au/politics/federal/effective-ban-on-non-essential-mass-gatherings-of-500-people-20200313-p549u5.html
Event ban	2020-03-16	8 out of 8	South Australia	https://www.watoday.com.au/politics/federal/effective-ban-on-non-essential-mass-gatherings-of-500-people-20200313-p549u5.html
Event ban	2020-03-16	8 out of 8	Queensland	https://www.watoday.com.au/politics/federal/effective-ban-on-non-essential-mass-gatherings-of-500-people-20200313-p549u5.html
Event ban	2020-03-16	8 out of 8	New South Wales	https://www.watoday.com.au/politics/federal/effective-ban-on-non-essential-mass-gatherings-of-500-people-20200313-p549u5.html
Event ban	2020-03-16	8 out of 8	Victoria	https://www.watoday.com.au/politics/federal/effective-ban-on-non-essential-mass-gatherings-of-500-people-20200313-p549u5.html
Event ban	2020-03-16	8 out of 8	Tasmania	https://www.watoday.com.au/politics/federal/effective-ban-on-non-essential-mass-gatherings-of-500-people-20200313-p549u5.html
Event ban	2020-03-16	8 out of 8	Australian Territory	Capital https://www.watoday.com.au/politics/federal/effective-ban-on-non-essential-mass-gatherings-of-500-people-20200313-p549u5.html
NPI	Date	# Effective	Region	Source
Gathering ban	2020-03-23	1 out of 8	Northern Territory	https://coronavirus.nt.gov.au/updates
Gathering ban	2020-03-28	2 out of 8	South Australia	https://www.sa.gov.au/_data/assets/pdf_file/0003/605055/Emergency-Management-GatheringsCOVID-19-Direction-2020_FINAL.pdf
<i>NPI implemented in two thirds of the regions by 2020-03-29</i>				
Gathering ban	2020-03-29	7 out of 8	Queensland	https://www.health.gov.au/news/health-alerts/novel-coronavirus-2019-ncov-health-alert/how-to-protect-yourself-and-others-from-coronavirus-covid-19/limits-on-public-gatherings-for-coronavirus-covid-19
Gathering ban	2020-03-29	7 out of 8	New South Wales	https://www.health.gov.au/news/health-alerts/novel-coronavirus-2019-ncov-health-alert/how-to-protect-yourself-and-others-from-coronavirus-covid-19/limits-on-public-gatherings-for-coronavirus-covid-19
Gathering ban	2020-03-29	7 out of 8	Victoria	https://www.health.gov.au/news/health-alerts/novel-coronavirus-2019-ncov-health-alert/how-to-protect-yourself-and-others-from-coronavirus-covid-19/limits-on-public-gatherings-for-coronavirus-covid-19

Gathering ban	2020-03-29	7 out of 8	Tasmania		https://www.health.gov.au/news/health-alerts/novel-coronavirus-2019-ncov-health-alert/how-to-protect-yourself-and-others-from-coronavirus-covid-19/limits-on-public-gatherings-for-coronavirus-covid-19
Gathering ban	2020-03-29	7 out of 8	Australian Territory	Capital	https://www.health.gov.au/news/health-alerts/novel-coronavirus-2019-ncov-health-alert/how-to-protect-yourself-and-others-from-coronavirus-covid-19/limits-on-public-gatherings-for-coronavirus-covid-19
Gathering ban	2020-04-01	8 out of 8	Western Australia		https://ww2.health.wa.gov.au/~media/Files/Corporate/general%20documents/Infectious%20diseases/PDF/Coronavirus/COVID19-Agency-Advisory-14-2020.pdf
NPI	Date	# Effective	Region		Source
School closure	2020-03-16	1 out of 8	New South Wales		https://www.abc.net.au/news/2020-03-23/coronavirus-parents-told-to-keep-children-home-from-school/12079524
School closure	2020-03-23	3 out of 8	Victoria		https://www.theguardian.com/world/2020/mar/22/victoria-nsw-lockdowns-scott-morrison-coronavirus-national-cabinet
School closure	2020-03-23	3 out of 8	Australian Territory	Capital	https://www.theguardian.com/world/2020/mar/22/victoria-nsw-lockdowns-scott-morrison-coronavirus-national-cabinet
School closure	2020-04-20	4 out of 8	Queensland		https://www.theguardian.com/australia-news/2020/apr/13/are-schools-open-closed-term-2-australia-coronavirus-easter-holidays
<i>Two-thirds quota not reached; NPI not implemented on national level</i>					
NPI	Date	# Effective	Region		Source
<i>NPI implemented in two thirds of the regions by 2020-03-23</i>					
Venue closure	2020-03-23	8 out of 8	Western Australia		https://www.theguardian.com/world/live/2020/mar/22/coronavirus-updates-live-australia-nsw-victoria-qlt-tasmania-cases-government-stimulus-latest-update-news
Venue closure	2020-03-23	8 out of 8	Northern Territory		https://www.theguardian.com/world/live/2020/mar/22/coronavirus-updates-live-australia-nsw-victoria-qlt-tasmania-cases-government-stimulus-latest-update-news
Venue closure	2020-03-23	8 out of 8	South Australia		https://www.theguardian.com/world/live/2020/mar/22/coronavirus-updates-live-australia-nsw-victoria-qlt-tasmania-cases-government-stimulus-latest-update-news
Venue closure	2020-03-23	8 out of 8	Queensland		https://www.theguardian.com/world/live/2020/mar/22/coronavirus-updates-live-australia-nsw-victoria-qlt-tasmania-cases-government-stimulus-latest-update-news

Venue closure	2020-03-23	8 out of 8	New South Wales		https://www.theguardian.com/world/live/2020/mar/22/coronavirus-updates-live-australia-nsw-victoria-qlt-tasmania-cases-government-stimulus-latest-update-news
Venue closure	2020-03-23	8 out of 8	Victoria		https://www.theguardian.com/world/live/2020/mar/22/coronavirus-updates-live-australia-nsw-victoria-qlt-tasmania-cases-government-stimulus-latest-update-news
Venue closure	2020-03-23	8 out of 8	Tasmania		https://www.theguardian.com/world/live/2020/mar/22/coronavirus-updates-live-australia-nsw-victoria-qlt-tasmania-cases-government-stimulus-latest-update-news
Venue closure	2020-03-23	8 out of 8	Australian Territory	Capital	https://www.theguardian.com/world/live/2020/mar/22/coronavirus-updates-live-australia-nsw-victoria-qlt-tasmania-cases-government-stimulus-latest-update-news
NPI	Date	# Effective	Region		Source
Lockdown	2020-03-29	1 out of 8	Australian Territory	Capital	https://www.covid19.act.gov.au/news-articles/latest-federal-government-announcement
Lockdown	2020-03-31	4 out of 8	New South Wales		https://www.legislation.nsw.gov.au/_emergency/Public%20Health%20(COVID-19%20Restrictions%20on%20Gathering%20and%20Movement)%20Order%202020.pdf
Lockdown	2020-03-31	4 out of 8	Victoria		https://www.vic.gov.au/coronavirusresponse
Lockdown	2020-03-31	4 out of 8	Tasmania		http://www.premier.tas.gov.au/releases/keeping_tasmanians_safe_and_secure_stay_home,_save_lives
Lockdown	2020-04-02	5 out of 8	Queensland		https://www.health.qld.gov.au/system-governance/legislation/cho-public-health-directions-under-expanded-public-health-act-powers/home-confinement-movement-gathering-direction
----- <i>Two-thirds quota not reached; NPI not implemented on national level</i> -----					
NPI	Date	# Effective	Region		Source
Work ban	<i>NPI implemented in no region</i>				

Table 11: Sources for policies implemented across different Australian regions

NPI	Date	# Effective	Region	Source
Event ban	2020-03-01	1 out of 2	North	https://www.gazzettaufficiale.it/showNewsDetail?id=2490&backTo=archivio&anno=2020&provenienza=archivio
<i>NPI implemented in two thirds of the regions by 2020-03-08</i>				
Event ban	2020-03-08	2 out of 2	South	https://www.gazzettaufficiale.it/showNewsDetail?id=2513&backTo=archivio&anno=2020&provenienza=archivio
NPI	Date	# Effective	Region	Source
Gathering ban	2020-03-01	1 out of 2	North	https://www.gazzettaufficiale.it/showNewsDetail?id=2490&backTo=archivio&anno=2020&provenienza=archivio
<i>NPI implemented in two thirds of the regions by 2020-03-08</i>				
Gathering ban	2020-03-08	2 out of 2	South	https://www.gazzettaufficiale.it/showNewsDetail?id=2513&backTo=archivio&anno=2020&provenienza=archivio
NPI	Date	# Effective	Region	Source
School closure	2020-03-01	1 out of 2	North	https://www.gazzettaufficiale.it/showNewsDetail?id=2490&backTo=archivio&anno=2020&provenienza=archivio
<i>NPI implemented in two thirds of the regions by 2020-03-08</i>				
School closure	2020-03-08	2 out of 2	South	https://www.gazzettaufficiale.it/showNewsDetail?id=2513&backTo=archivio&anno=2020&provenienza=archivio
NPI	Date	# Effective	Region	Source
<i>NPI implemented in two thirds of the regions by 2020-03-11</i>				
Venue closure	2020-03-11	2 out of 2	North	https://www.gazzettaufficiale.it/showNewsDetail?id=2532&backTo=archivio&anno=2020&provenienza=archivio
Venue closure	2020-03-11	2 out of 2	South	https://www.gazzettaufficiale.it/showNewsDetail?id=2532&backTo=archivio&anno=2020&provenienza=archivio
NPI	Date	# Effective	Region	Source
<i>NPI implemented in two thirds of the regions by 2020-03-11</i>				
Lockdown	2020-03-11	2 out of 2	North	https://www.gazzettaufficiale.it/showNewsDetail?id=2532&backTo=archivio&anno=2020&provenienza=archivio
Lockdown	2020-03-11	2 out of 2	South	https://www.gazzettaufficiale.it/showNewsDetail?id=2532&backTo=archivio&anno=2020&provenienza=archivio

NPI	Date	# Effective	Region	Source
<i>NPI implemented in two thirds of the regions by 2020-03-22</i>				
Work ban	2020-03-22	2 out of 2	North	https://www.gazzettaufficiale.it/showNewsDetail?id=2545&backTo=archivio&anno=2020&provenienza=archivio
Work ban	2020-03-22	2 out of 2	South	https://www.gazzettaufficiale.it/showNewsDetail?id=2545&backTo=archivio&anno=2020&provenienza=archivio

Table 12: Sources for policies implemented across different Italian regions

References

- [1] Carpenter B, Gelman A, Hoffman MD, Lee D, Goodrich B, Betancourt M, et al. Stan: a probabilistic programming language. *Journal of Statistical Software*. 2017;.
- [2] Stan Development Team. Prior Choice Recommendations; 2020. Available from: <https://github.com/stan-dev/stan/wiki/Prior-Choice-Recommendations>.
- [3] Stan Development Team. Stan modeling language users guide (Version 2.21); 2019. Available from: https://mc-stan.org/docs/2_21/reference-manual/effective-sample-size-section.html.
- [4] Gelman A, Rubin DB, others. Inference from iterative simulation using multiple sequences. *Statistical science*. 1992;7(4):457–472.
- [5] Gelman A, Carlin JB, Stern HS, Dunson DB, Vehtari A, Rubin DB. *Bayesian Data Analysis*. Chapman & Hall; 2013.
- [6] Vehtari A, Gelman A, Gabry J. Practical Bayesian model evaluation using leave-one-out cross-validation and WAIC. *Statistics and Computing*. 2017;27(5):1413–1432.
- [7] Flaxman S, Mishra S, Gandy A, others. Estimating the number of infections and the impact of nonpharmaceutical interventions on COVID-19 in 11 European countries. Imperial College COVID-19 Response Team. 2020;.