

Appendix to manuscript ‘Assessing the risk of spread of COVID-19 to the Asia Pacific region’

Freya M. Shearer¹, James Walker², Nefel Tellioglu³, James M. McCaw^{1,4,5}, Jodie McVernon^{1,4,6}, Andrew Black², Nic Geard^{1,3,4}

1. Melbourne School of Population and Global Health, The University of Melbourne, Australia
2. School of Mathematical Sciences, The University of Adelaide, Australia
3. School of Computing and Information Systems, The University of Melbourne, Australia
4. Peter Doherty Institute for Infection and Immunity, The Royal Melbourne Hospital and The University of Melbourne, Australia
5. School of Mathematics and Statistics, The University of Melbourne, Australia
6. Murdoch Childrens Research Institute, The Royal Children’s Hospital, Australia

Step 1 – Importation risk from China to intermediary countries

SARS-CoV-2 first emerged in China [1] and hence the risk of importation for countries in the South East Asia and Pacific regions, in the early stages of the outbreak, was primarily dependent on travel from China. The expected numbers of imported cases in each intermediary country was estimated using an approach proposed by De Salazar and colleagues (2020) [2], based on air travel volume estimates from China since COVID-19 emergence. Full details are provided in [2]. Briefly, their model estimates the expected number of imported cases in countries by regressing the number of imported cases reported by each country against their estimated incoming travel volumes from China. They assume that the expected case count would be linearly proportional to air travel volume. Bootstrap sampling was used to estimate 95% confidence intervals.

For our analysis, the model was fitted to reported cumulative case counts for each country extracted from WHO situation reports 2, 9, 16, 23, and 30 (*i.e.*, one per week from January 22) and incoming air travel volumes as estimated by Lai and colleagues [3]. We fitted the model in R (version 3.6.1) using the `glm` function from the base `Stats` package.

For WHO situation reports 16, 23, and 30, the cumulative case counts for countries outside of China are separated by whether the likely site of exposure was within China or elsewhere. For our analysis, reported cumulative case counts were extracted from the column ‘total cases with travel history to China’ in Table 2 of WHO situation reports 16 and 23, and the sub-column ‘China’ under ‘Likely place of exposure’ in Table 2 of WHO situation report 30.

We used estimates of incoming air travel volumes for each intermediary country extracted from Lai and colleagues’ global risk analysis, which accounts for changes in air travel volumes following travel restrictions within China and internationally imposed in late-January. Full details are provided in [3]. Briefly, their analysis considered (i) internal travel from Wuhan to other cities/regions in China, based on location-based mobility data; and (ii) international travel from mainland China to other countries, based on travel volume from Wuhan and 17 other high-risk Chinese cities over the period from February to April, based on International Air Transport Association data. Travel volume was weighted over time to capture the impact of travel restrictions after Lunar New Year, following which there was assumed to be no further travel from Wuhan and a 75% reduction in travel from remaining cities.

Step 2 – Number of potentially undetected cases in intermediary countries

The number of potentially undetected introductions in each intermediary country was based on the discrepancy between expected (Step 1) and reported cases (noting that cases due to local

transmission were excluded from these counts).

Under the assumption that all reported cases were effectively isolated (24 hours after symptom onset) with reduced risk to onward transmission, the difference between the expected and reported numbers of cases per country provided a crude estimate of the number of unreported cases. We assumed unreported cases were undetected and therefore more likely to contribute to local transmission and potentially a large outbreak.

Step 3 – Probability of an outbreak in intermediary countries

A branching process model was used to generate stochastic projections of the initial stages of an outbreak for each country.

The model assumes individuals can be either Exposed (E), Infectious (I), Recovered (R), or isolated (V). The exposed and infectious classes are split into two compartments (giving them an Phase-type distribution) and symptom onset is taken to correspond to the transition between exposed and infectious states (see Figure 1).

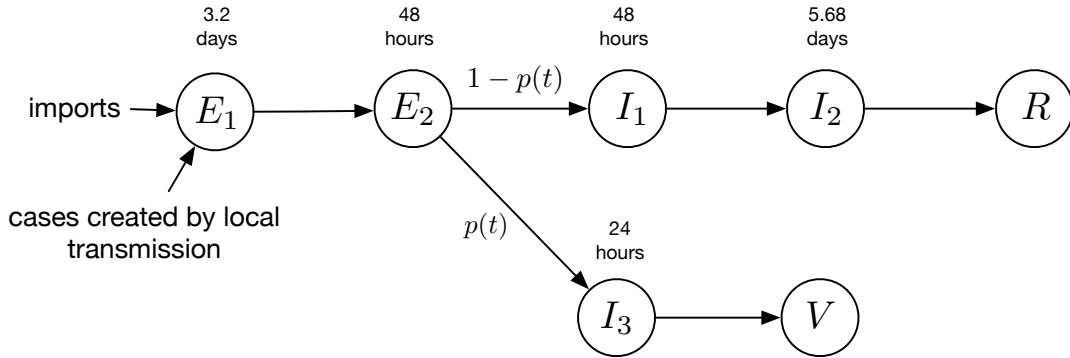


Figure 1: The Susceptible, Exposed, Infected, Recovered model with isolation and external importation of cases. The average duration of time spent in each state is indicated over the circles. The class V represents isolated cases that can no longer transmit.

Imported cases are assumed to be in the first exposed class. At the time on symptom onset there is a probability, $p(t)$, that the individual is detected (either from direct contact tracing efforts or enhanced case finding) and hence with probability $1 - p(t)$, the case is missed. This probability depends on the current workload and hence time. Once the case is detected there is a 24-hour period before they are completely isolated during which it is possible for them to infect others. The probability of detection is related to the workload, $x(t)$, by

$$p(t) = \begin{cases} p_0, & x(t) < w_c, \\ p_0 \frac{w_c}{x(t)}, & x(t) \geq w_c, \end{cases} \quad (1)$$

where p_0 is the baseline probability of detection and w_c is the workload capacity. So while the workload is less than the capacity, the probability of detection remains high, but decreases once the capacity is exceeded.

Other model parameters and assumptions:

- Mean incubation period is 5.2 days (time in $E1$ and $E2$) [4];
- Infectious period is 7.68 days (time in $I1$ and $I2$) [5];

- R_0 is taken to be 2.68 based on estimates from the early epidemic phase in Wuhan, China [5];
- No variation in individual-level transmission.

Model simulations ($n=1000$) were performed in R (version 3.6.1) [6] using the Gillespie algorithm [7]. For each country, the import rate is calculated as the weighted mean of daily expected cases, with weights set according to the time intervals between data points. The initial detection probability (p_0) of each country was calculated as the mean of the ratio of cumulative reported cases to the cumulative expected cases starting from January 29. The maximum value of p_0 was 1.0. The workload capacity w_c , used for updating the detection probability, was set to 10 infected people/day.

The probability of local transmission was defined as the proportion of simulations with more than zero daily locally transmitted cases 5 weeks after simulation commenced (*i.e.*, February 26).

Step 4 – Estimated size of an uncontained outbreak in intermediary countries

The stochastic transmission model described in Step 3 was also used to estimate the likely number of locally transmitted cases in each intermediary country, conditional on local transmission occurring. This model assumed no public health intervention, and importation rate was constant over time. The detection probability was calculated by using workload capacity w_c and p_0 at each time increment. If the workload w (the number of people currently being isolated) was smaller than w_c , then the detection probability was equal to p_0 . If the w exceeded w_c , the health system was deemed to be under strain, and the detection probability was set to $(p_0 \times w_c)/w$. The transmission model was run from January 22, with epidemic curves (separated by imports and local transmission) projected forward by one week beyond the last data collection date (February 26). Manuscript Figure 3 was generated in R (version 3.6.1) using functions from the package `gridExtra`. Manuscript Figure 4 was generated in R with 95% quantile bounds smoothed using functions from the package `ggplot2`.

Projected epidemic curves for all intermediary countries are shown in Figures 2, 3 and 4, with reported imported and local cases also shown for context.

Step 5 – Importation risk from intermediary countries to a country of interest

Travel volumes from countries within the South East Asia and Western Pacific regions to Australia were taken from Australian Bureau of Statistics arrivals data for March 2019 [8, 9]. Values shown are a sum of visitors arriving from each intermediary country, and Australian residents returning from each intermediary country.

References

- [1] World Health Organization. Novel Coronavirus (2019-nCoV) Situation Report – 1. Available at: <https://www.who.int/emergencies/diseases/novel-coronavirus-2019/situation-reports>, 2020. Geneva, January 21 2020.
- [2] Pablo M De Salazar, Rene Niehus, Aimee Taylor, Caroline O Buckee, and Marc Lipsitch. Using predicted imports of 2019-nCoV cases to determine locations that may not be identifying all imported cases. *medRxiv*, 2020. doi: 10.1101/2020.02.04.20020495.

- [3] Shengjie Lai, Isaac Bogoch, Nick Ruktanonchai, Alexander Watts, Xin Lu, Weizhong Yang, Hongjie Yu, Kamran Khan, and Andrew J Tatem. Assessing spread risk of Wuhan novel coronavirus within and beyond China, January–April 2020: a travel network-based modelling study. *medRxiv*, 2020. doi: 10.1101/2020.02.04.20020479.
- [4] Qun Li, Xuhua Guan, Peng Wu, Xiaoye Wang, Lei Zhou, Yeqing Tong, Ruiqi Ren, Kathy S.M. Leung, Eric H.Y. Lau, Jessica Y. Wong, Xuesen Xing, Nijuan Xiang, Yang Wu, Chao Li, Qi Chen, Dan Li, Tian Liu, Jing Zhao, Man Liu, Wenxiao Tu, Chuding Chen, Lianmei Jin, Rui Yang, Qi Wang, Suhua Zhou, Rui Wang, Hui Liu, Yinbo Luo, Yuan Liu, Ge Shao, Huan Li, Zhongfa Tao, Yang Yang, Zhiqiang Deng, Boxi Liu, Zhitao Ma, Yanping Zhang, Guoqing Shi, Tommy T.Y. Lam, Joseph T. Wu, George F. Gao, Benjamin J. Cowling, Bo Yang, Gabriel M. Leung, and Zijian Feng. Early Transmission Dynamics in Wuhan, China, of Novel Coronavirus–Infected Pneumonia. *N Engl J Med*, 2020. doi: 10.1056/NEJMoa2001316.
- [5] Joseph T Wu, Kathy Leung, and Gabriel M Leung. Nowcasting and forecasting the potential domestic and international spread of the 2019-nCoV outbreak originating in Wuhan, China: a modelling study. *Lancet*, 395(10225):689–97, 2020. doi: 10.1016/S0140-6736(20)30260-9.
- [6] R Core Team. *R: A Language and Environment for Statistical Computing*. R Foundation for Statistical Computing, Vienna, Austria, 2019. URL <https://www.R-project.org/>.
- [7] Daniel T Gillespie. A general method for numerically simulating the stochastic time evolution of coupled chemical reactions. *J Comput Phys*, 22:403–434, 1976. doi: 10.1016/0021-9991(76)90041-3.
- [8] Australian Bureau of Statistics, Overseas Arrivals and Departures, Australia. ‘Table 5. Short-term Movement, Visitors Arriving - Selected Countries of Residence: Original’, time series spreadsheet, 2019. Available at: <https://www.abs.gov.au/AUSSTATS/abs@.nsf/DetailsPage/3401.0Nov%202019?OpenDocument>.
- [9] Australian Bureau of Statistics, Overseas Arrivals and Departures, Australia. ‘Table 10. Short-term Movement, Residents Returning - Length of Stay and Main Reason for Journey: Original’, time series spreadsheet, 2019. Available at: <https://www.abs.gov.au/AUSSTATS/abs@.nsf/DetailsPage/3401.0Nov%202019?OpenDocument>.

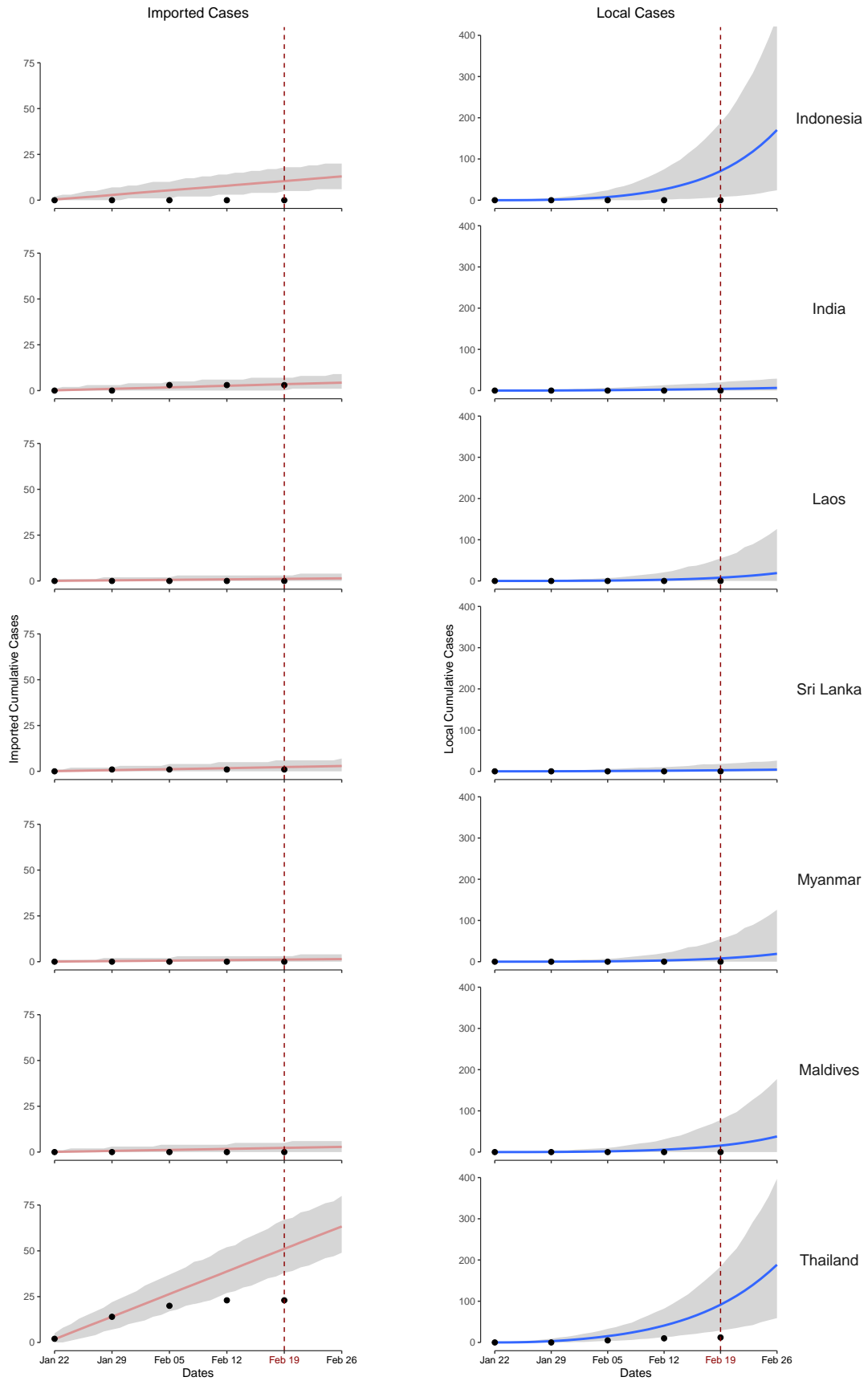


Figure 2: Imported cases (left panels) and epidemic curves (right panels) from January 22 using WHO data up to February 24, and projecting forward to March 4, for countries in the South East Asian region. Lines and shaded regions in each panel show median and 95% quantiles for the cumulative number of cases (imported or locally transmitted). Black points show cumulative imported cases (left panels) and cumulative local cases (right panels) for each country, as reported by WHO.

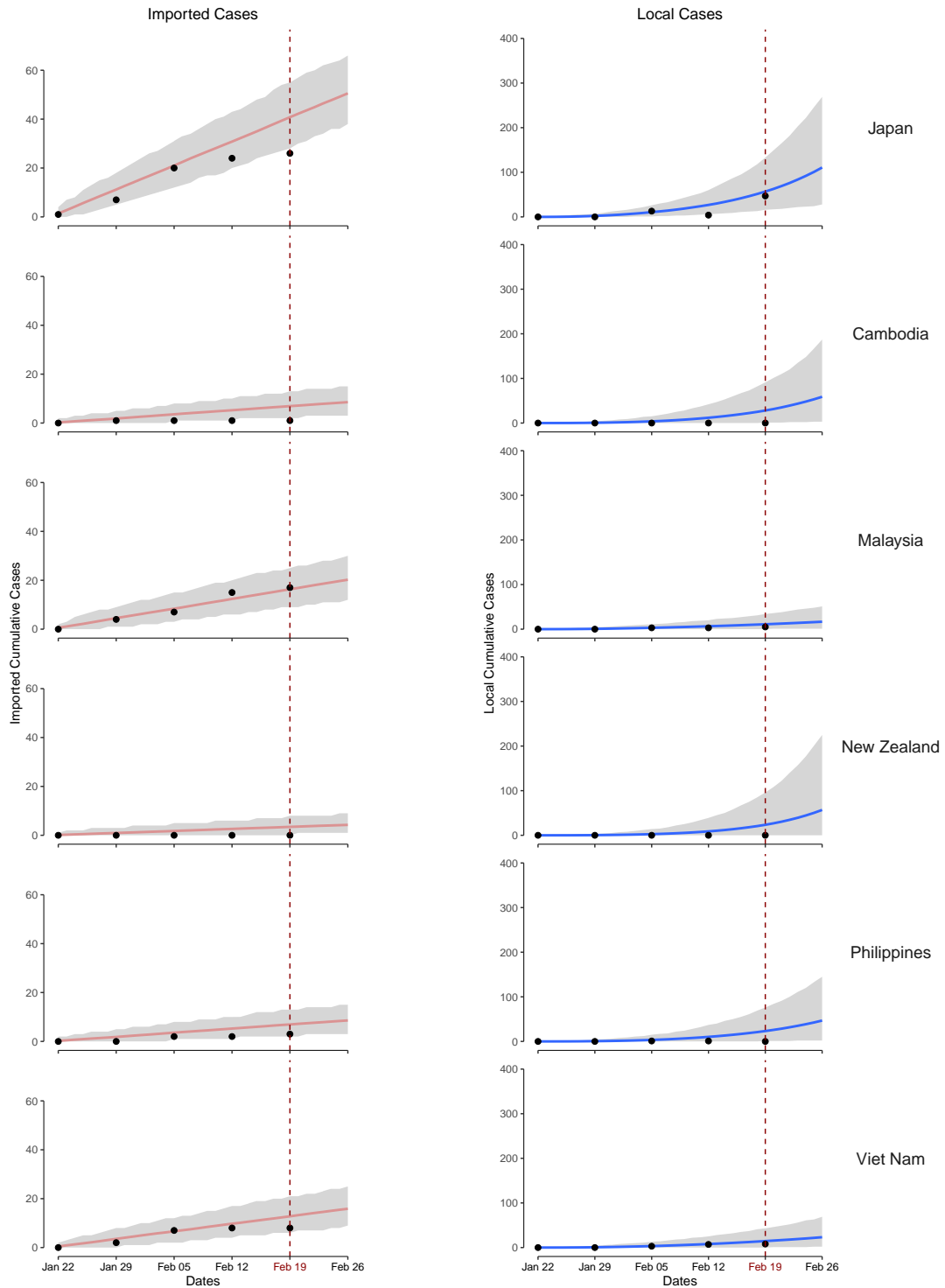


Figure 3: Imported cases (left panels) and epidemic curves (right panels) from January 22 using WHO data up to February 24, and projecting forward to March 4, for selected countries in the Western Pacific region. Lines and shaded regions in each panel show median and 95% quantiles for the cumulative number of cases (imported or locally transmitted). Black points show cumulative imported cases (left panels) and cumulative local cases (right panels) for each country, as reported by WHO. Note that the decrease in cumulative local cases in Japan from February 12 to 19 is due to a change in reporting formats within the WHO situation reports between these dates.

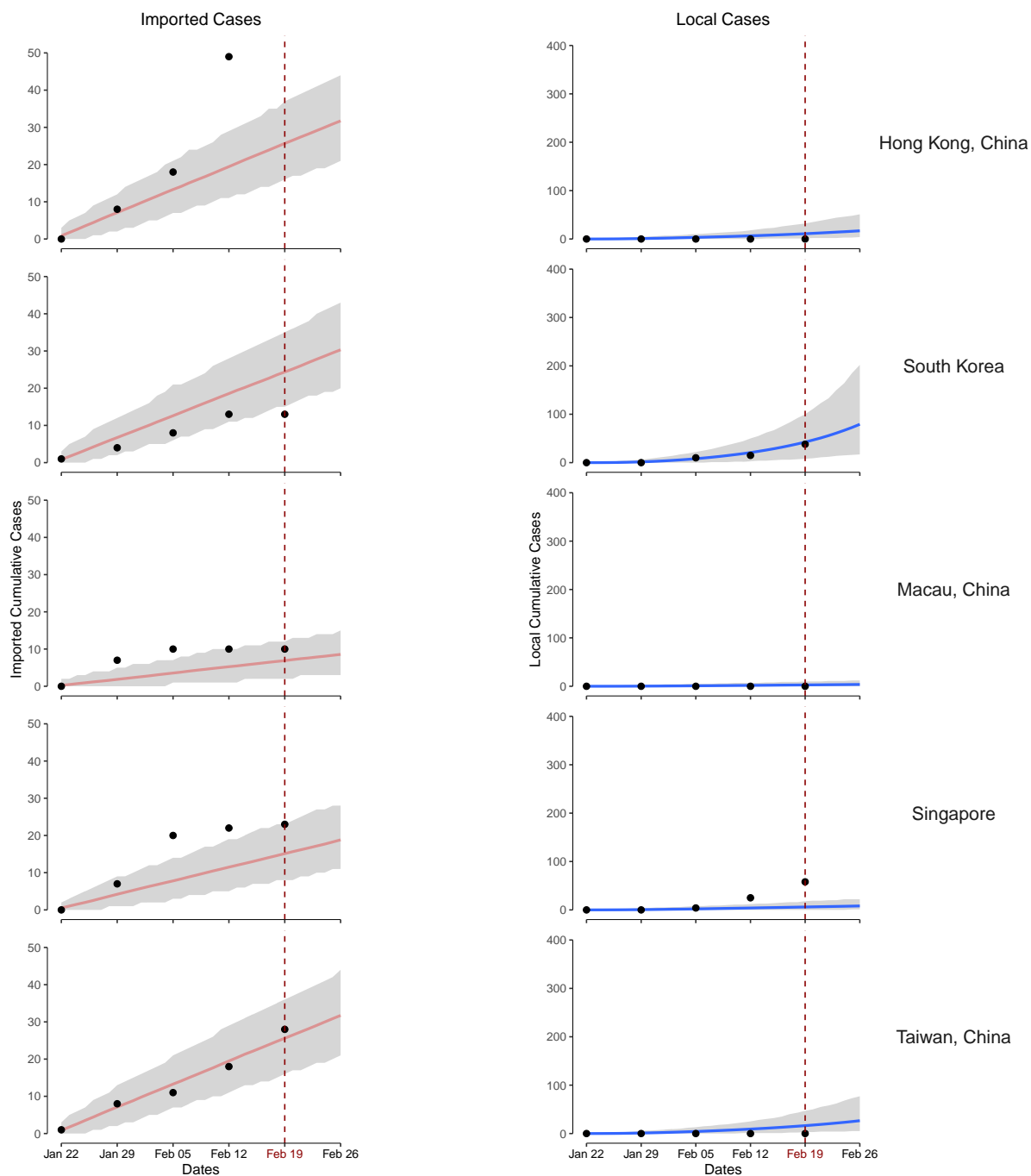


Figure 4: Imported cases (left panels) and epidemic curves (right panels) from January 22 using WHO data up to February 24, and projecting forward to March 4, for selected countries in the Western Pacific region. Lines and shaded regions in each panel show median and 95% quantiles for the cumulative number of cases (imported or locally transmitted). Black points show cumulative imported cases (left panels) and cumulative local cases (right panels) for each country, as reported by WHO.