

	Total(N=325)	IVIG(N=174)	Non-IVIG(N=151)	P value
WBC, (1×10 ⁹ /L)	6.5(4.6-9.7)	6.7(4.6-10.2)	6.0(4.6-7.9)	0.235
NEU,(1×10 ⁹ /L)	4.4(2.7-7.8)	4.9(3.1-8.1)	3.7(2.6-6.1)	0.036
LYM,(1×10 ⁹ /L)	1.1(0.6-1.6)	0.9(0.6-1.4)	1.2(0.8-1.8)	<0.001
IL-6,(pg/ml)	9.6(3.8-42.1)	9.8(4.0-36.2)	7.7(3.4-92.5)	0.545
PCT,(ng/ml)	0.1(0-0.3)	0.1(0-0.3)	0.1(0-0.3)	0.286
CRP,(mg/L)	9.2(1.7-52.7)	11.2(3.5-77.0)	4.8(1.1-39.9)	0.011
FIB,(g/L)	3.3(2.4-4.4)	3.6(2.8-4.5)	2.9(2.2-4.0)	0.021
Lac, (mmol/L)	2.1(1.5-2.9)	2.0(0-4.0)	2.2(1.4-3.5)	0.535
PaO ₂ /FiO ₂	300.0(138.3-401.0)	246.6(122.8-374.6)	330.3(184.1-436.0)	0.053
WBC: White blood cell count; NEU: Neutrophil ; LYM :Lymphocyte count ; IL-6: Interleutin-6; PCT: Procalcitonin; CRP: C-reactive protein; FIB:Fibrinogen; Lac :lactic acid				
Supplementary Table 1: Clinical parameters after the treatment with IVIG and Non-IVIG				

	Critical type		P value	Severe type		P value
	IVIG (N=71)	Non-IVIG (N=32)		IVIG (N=103)	Non-IVIG (N=119)	
WBC, (1×10 ⁹ /L)	7.5 (5.5-10.9)	8.6 (4.5-20.2)	0.531	6.2 (4.2-9.8)	5.6 (4.7-7.0)	0.285
NEU,(1×10 ⁹ /L)	5.7 (3.7-8.9)	8.0 (3.1-17.9)	0.501	4.5 (2.5-8.0)	3.4 (2.5-4.8)	0.051
LYM,(1×10 ⁹ /L)	0.6 (0.4-1.1)	0.9 (0.4-1.4)	0.412	1.1 (0.7-1.5)	1.4 (1.0-1.9)	0.004
IL-6,(pg/ml)	61.1(13.2- 189.4)	50.4(29.9- 2953.0)	0.406	6.5 (2.2-11.6)	4.4 (3.1-52.9)	0.306
PCT,(ng/ml)	0.2 (0.1-1.6)	3.4 (0.4-15.4)	0.001	0.1 (0-0.1)	0.4 (0-0.1)	0.076
CRP,(mg/L)	62.8(13.9- 137.7)	75.7(23.5- 133.6)	0.902	4.4 (1.0-12.3)	2.6 (0.6-9.1)	0.218
FIB,(g/L)	4.2 (2.6-4.7)	2.4 (1.7-3.8)	0.031	3.5 (2.8-4.4)	3.3 (2.3-4.4)	0.312
Lac, (mmol/L)	2.1 (1.6-2.6)	5.3 (2.6-13.0)	<0.001	2.0(1.5-2.6)	1.8 (1.2-2.4)	0.171
PaO ₂ /FiO ₂	148.0(92.0 -282.8)	128.0(51.7 -333.0)	0.453	341.4(224.8-4 61.2)	361.2(299.6 -456.3)	0.314
WBC: White blood cell count; NEU: Neutrophil ; LYM :Lymphocyte count ; IL-6: Interleutin-6; PCT: Procalcitonin; CRP: C-reactive protein; FIB:Fibrinogen; Lac :lactic acid						
Supplementary Table 2: Effects of IVIG on clinical parameters in subgroups of critical and severe type						

Primary outcome N(%)	APACHE>11		P value	APACHE≤11		P value
	IVIG (N=24)	Non-IVIG (N=9)		IVIG (N=146)	Non-IVIG (N=123)	
28-day mortality	15(63%)	7(78%)	0.407	6(4%)	8(7%)	0.378
60-day mortality	19(79%)	8(89%)	0.519	11(8%)	8(7%)	0.743
	PaO2/FiO2>100		P value	PaO2/FiO2≤100		P value
	IVIG (N=100)	Non-IVIG (N=94)		IVIG (N=10)	Non-IVIG (N=11)	
28-day mortality	12(12%)	9(10%)	0.587	5(50%)	5(46%)	0.835
60-day mortality	20(20%)	9(10%)	0.042	6(60%)	6(55%)	0.801
	LYM>0.8		P value	LYM≤0.8		P value
	IVIG (N=89)	Non-IVIG (N=102)		IVIG (N=79)	Non-IVIG (N=34)	
28-day mortality	7(8%)	3(3%)	0.128	15(19%)	12(35%)	0.062
60-day mortality	10(11%)	3(3%)	0.023	22(28%)	13(38%)	0.273
	SOFA>6		P value	SOFA≤6		P value
	IVIG (N=34)	Non-IVIG (N=14)		IVIG (N=136)	Non-IVIG (N=127)	
28-day mortality	18(53%)	7(50%)	0.853	3(2%)	8(6%)	0.098
60-day mortality	23(68%)	8(57%)	0.489	7(5%)	8(6%)	0.687
Supplementary Table 3: Primary outcome analysis in different subgroups with IVIG treatment or not						

Secondary outcome N (%)	APACHE>11		P value	APACHE≤11		P value
	IVIG (N=24)	Non-IVIG (N=9)		IVIG (N=146)	Non-IVIG (N=123)	
In-hospital days	17.5 (10.0-34.5)	14.0 (5.5-23.0)	0.254	24.5 (18.0-32.3)	15.0 (13.0-21.0)	<0.001
Total course of disease ^a	26.5 (15.0-42.0)	38.0 (27.5-42.0)	0.102	33.0 (24.0-39.0)	20.0 (16.0-29.0)	<0.001
WBC, (1×10 ⁹ /L)	8.4 (6.3-15.0)	7.9 (4.1-20.2)	0.729	6.5 (4.4-9.7)	5.7 (4.7-7.2)	0.378
NEU,(1×10 ⁹ /L)	6.5 (4.6-13.4)	7.1 (2.7-19.0)	0.835	4.6 (2.8-7.8)	3.5 (2.5-5.0)	0.027
LYM,(1×10 ⁹ /L)	0.6 (0.3-1.5)	0.8 (0.3-0.9)	0.501	1.0 (0.6-1.4)	1.4 (1.0-1.9)	<0.001
IL-6,(pg/ml)	70.1(12.2-35 4.5)	392.5(26.3-5 62.6)	0.659	7.8 (3.2-27.8)	6.6 (3.1-88.9)	0.498
PCT,(ng/ml)	0.5 (0.1-3.1)	8.4 (3.2-23.8)	0.018	0.1 (0-0.2)	0 (0-0.2)	0.017
CRP,(mg/L)	71.7(10.8-14 0.8)	110.0(59.4-2 09.0)	0.301	10.0 (2.7-47.4)	3.0 (1.2-15.2)	0.002
FIB,(g/L)	3.3 (2.3-4.5)	2.4 (2.0-3.3)	0.310	3.8 (3.0-4.6)	2.6 (2.1-3.7)	0.007
Lac, (mmol/L)	2.6 (2.4-4.5)	10.5 (2.7-11.5)	0.109	1.9 (1.5-2.4)	1.9 (1.2-2.6)	0.724
PaO ₂ /FiO ₂	95.0(86.0-13 2.0)	60.3(42.2-16 4.9)	0.039	304.5 (193.0-398.3)	352.1(294.7 -454.8)	0.024
	PaO ₂ /FiO ₂ >100		P value	PaO ₂ /FiO ₂ ≤100		P value
	IVIG (N=100)	Non-IVIG (N=94)		IVIG (N=10)	Non-IVIG (N=11)	
In-hospital days	27.0 (17.3-33.0)	16.0 (13.0-22.0)	<0.001	21.5 (4.8-38.3)	20.0 (15.0-31.0)	0.809
Total course of disease ^a	34.0 (24.0-40.8)	21.0 (16.0-31.0)	<0.001	33.5 (14.0-45.3)	37.0 (29.0-40.0)	0.349
WBC, (1×10 ⁹ /L)	7.0 (4.9-9.8)	5.7 (4.7-7.2)	0.047	9.9 (7.3-13.3)	7.8 (4.2-14.3)	0.515
NEU,(1×10 ⁹ /L)	5.0 (3.1-8.1)	3.4 (2.7-4.9)	0.004	6.6 (4.9-9.1)	7.0 (2.5-13.0)	0.897
LYM,(1×10 ⁹ /L)	0.9 (0.55-1.3)	1.4 (0.9-1.9)	<0.001	0.5 (0.3-1.0)	1.0 (0.4-1.2)	0.315
IL-6,(pg/ml)	14.6 (5.2-70.3)	15.9 (4.0-154.3)	0.977	202.2 (2.9-2212.0)	N/A	N/A
PCT,(ng/ml)	0.1(0-0.4)	0.1(0-0.3)	0.089	0.4(0.1-5.2)	0.7(0-3.6)	0.788
CRP,(mg/L)	19.5	3.6	<0.001	40.1	79.7	0.792

FIB,(g/L)	(6.0-114.1) 3.3 (2.5-4.5)	(1.3-24.2) 2.9 (2.1-3.7)	0.119	(20.8-94.1) 4.2 (1.9-4.8)	(4.3-128.3) 3.2 (2.2-4.6)	0.505
Lac, (mmol/L)	2.0 (1.6-2.6)	2.1 (1.2-2.8)	0.708	2.3 (1.7-10.7)	2.7 (2.0-5.3)	0.635
LYM>0.8						
			P value			P value
	LYM>0.8	P value		LYM≤0.8	P value	
	IVIG (N=89)	Non-IVIG (N=102)		IVIG (N=79)	Non-IVIG (N=34)	
In-hospital days	22.0 (17.5-33.0)	15.0 (12.0-20.0)	<0.001	26.0 (16.0-33.0)	17.0 (13.8-23.5)	0.020
Total course of disease ^a	30.0 (23.0-39.5)	19.0 (16.0-28.3)	<0.001	33.0 (22.0-39.0)	32.0 (24.0-44.3)	0.573
WBC, (1×10 ⁹ /L)	6.7 (5.1-10.6)	5.8 (4.8-7.1)	0.014	6.7 (4.2-9.8)	6.7 (4.3-12.9)	0.606
NEU,(1×10 ⁹ /L)	4.7 (3.2-8.5)	3.4 (2.6-4.4)	0.001	4.9 (2.7-8.1)	4.8 (2.7-11.4)	0.682
IL-6,(pg/ml)	9.1 (3.7-32.7)	4.3 (3.0-29.9)	0.488	10.6 (4.0-50.1)	561.6(27.9-2538.5)	0.009
PCT,(ng/ml)	0.1(0-0.5)	0(0-0.1)	<0.001	0.1(0.1-0.2)	0.3(0.1-8.4)	0.018
CRP,(mg/L)	10.1 (3.4-49.9)	2.4 (0.55-7.1)	<0.001	18.8 (3.1-114.1)	36.6 (5.2-103.7)	0.626
FIB,(g/L)	3.5 (2.9-4.9)	3.6 (2.6-4.3)	0.473	3.8 (2.6-4.4)	2.5 (1.9-3.5)	0.014
Lac, (mmol/L)	2.2 (1.7-2.6)	2.1 (1.3-2.5)	0.221	1.9 (1.4-2.9)	3.1 (1.5-10.8)	0.120
PaO ₂ /FiO ₂	297.8(123.9-392.0)	352.9(298.3-448.1)	0.003	231.8(92.6-316.7)	247.5(57.6-371.0)	0.819
SOFA>6						
			P value			P value
	SOFA>6	P value		SOFA≤6	P value	
	IVIG (N=27)	Non-IVIG (N=14)		IVIG (N=136)	Non-IVIG (N=127)	
In-hospital days	17.5 (10.0-28.3)	18.5 (6.8-28.0)	0.856	26.0 (18.0-33.0)	15.0 (13.0-21.0)	<0.001
Total course of disease ^a	25.5(17.5-35.3)	38.0(27.8-45.3)	0.012	33.0 (24.3-39.8)	20.0 (16.0-29.0)	<0.001
WBC, (1×10 ⁹ /L)	7.6 (6.0-13.4)	7.1 (3.9-15.5)	0.559	6.4 (4.4-9.7)	5.6 (4.7-7.1)	0.278
NEU,(1×10 ⁹ /L)	6.5 (4.5-17.1)	5.3 (2.3-13.5)	0.634	4.6 (2.7-7.8)	3.4 (2.6-5.0)	0.030
LYM,(1×10 ⁹ /L)	0.6 (0.3-1.2)	0.7 (0.4-1.5)	0.634	1.0 (0.6-1.4)	1.4 (1.0-1.9)	<0.001
IL-6,(pg/ml)	42.5(25.5-222.0)	204.1(31.2-648.1)	0.736	7.5	6.7	0.693

	5.3)	55.8)		(3.1-16.6)	(3.1-74.0)	
PCT,(ng/ml)	0.2(0.1-1.9)	2.7(0.1-7.1)	0.198	0.1(0-0.2)	0(0-0.2)	0.043
CRP,(mg/L)	71.7	60.1	0.619	10.0	2.8	0.005
	(10.4-134.3)	(7.0-128.3)		(2.5-32.7)	(0.7-18.2)	
FIB,(g/L)	3.6(2.5-4.6)	2.7(2.2-4.1)	0.473	3.9(2.9-4.5)	3.2(2.1-3.9)	0.019
Lac, (mmol/L)	2.5(1.8-3.2)	2.7(2.1-10.6)	0.416	2.0(1.5-2.4)	2.0(1.2-2.6)	0.701
PaO ₂ /FiO ₂	108.5	82.9	0.592	297.8	352.6(299.6	0.003
	(85.8-189.0)	(48.7-320.5)		(184.5-401.0)	-454.8)	

^aTotal course of disease: Time from illness onset to death or discharge, days; WBC: White blood cell count; NEU: Neutrophil ; LYM :Lymphocyte count ; IL-6: Interleutin-6; PCT: Procalcitonin; CRP: C-reactive protein; FIB:Fibrinogen; Lac :lactic acid

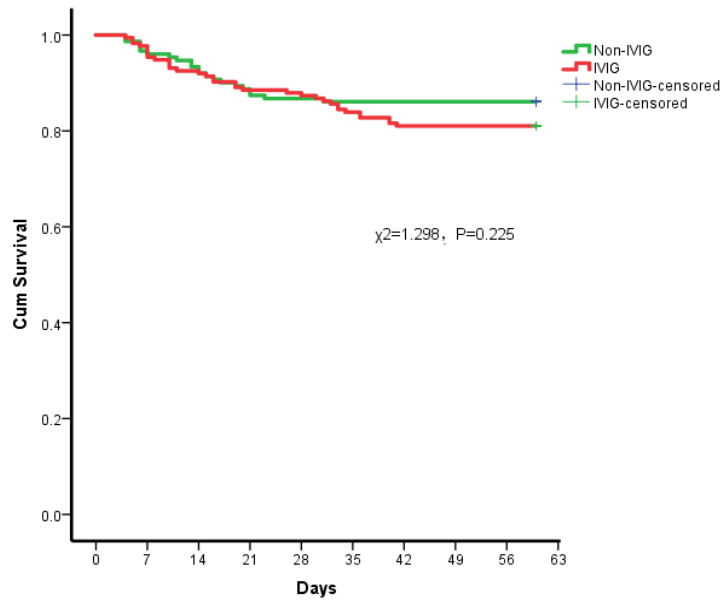
Supplementary Table 4: Effects of IVIG treatment on secondary outcome and clinical parameters in different subgroups

	Total (N=174)	IVIG>15g/d (N=74)	IVIG≤15g/d (N=100)	P value
WBC, (1×10 ⁹ /L)	6.7(4.6-10.2)	6.7(5.1-8.8)	6.6(4.5-11.3)	0.523
NEU,(1×10 ⁹ /L)	4.9(3.1-8.1)	4.6(3.6-7.4)	5.5(2.7-9.3)	0.401
LYM,(1×10 ⁹ /L)	0.9(0.6-1.4)	0.9(0.6-1.3)	1.0(0.6-1.4)	0.641
IL-6,(pg/ml)	9.8(4.0-36.2)	15.9(7.5-91.1)	6.5(2.0-16.9)	<0.001
PCT,(ng/ml)	0.1(0-0.3)	0.1(0-0.2)	0.1(0-0.7)	0.757
CRP,(mg/L)	11.2(3.5-77.0)	23.3(6.2-80.7)	8.4(1.6-48.2)	0.007
FIB,(g/L)	3.6(2.8-4.5)	3.8(3.1-4.6)	3.6(2.7-4.5)	0.695
Lac, (mmol/L)	2.0(1.6-2.6)	1.9(1.4-2.4)	2.4(1.8-3.3)	0.006
PaO ₂ /FiO ₂	246.6(122.8-374.6)	316.7(210.0-388.2)	149.0(90.5-314.3)	0.002
WBC: White blood cell count; NEU: Neutrophil ; LYM :Lymphocyte count ; IL-6: Interleutin-6; PCT: Procalcitonin; CRP: C-reactive protein; FIB:Fibrinogen; Lac :lactic acid				
Supplementary Table 5: Effects of different dose of IVIG treatment on clinical parameters in all patients				

	Critical type		P value	Severe type		P value
	IVIG>15g/d (N=40)	IVIG≤15g/d (N=31)		IVIG>15g/d (N=34)	IVIG≤15g/d (N=69)	
WBC,(1×10 ⁹ /L)	7.1(5.5-9.0)	9.3(5.3-14.6)	0.066	6.4(4.1-9.0)	6.2(4.2-10.3)	0.918
NEU,(1×10 ⁹ /L)	4.7(3.9-7.1)	8.1(3.7-13.0)	0.042	4.1(3.0-7.8)	4.8(2.4-8.3)	0.798
LYM,(1×10 ⁹ /L)	0.8(0.6-1.2)	0.5(0.3-1.0)	0.020	1.0(0.4-1.5)	1.1(0.8-1.6)	0.413
IL-6,(pg/ml)	61.1 (11.2-144.2)	55.6 (19.5-618.3)	0.438	11.9 (6.6-28.7)	3.8 (1.8-8.6)	0.002
PCT,(ng/ml)	0.1(0.1-0.2)	1.0(0.3-6.7)	<0.001	0.1(0-0.2)	0(0-0.1)	0.304
CRP,(mg/L)	50.3 (11.1-130.8)	79.4 (15.3-141.5)	0.372	12.3 (4.4,24.5)	2.9 (0.6-9.3)	0.007
FIB,(g/L)	2.3(1.6-3.0)	4.2(2.6-4.7)	0.794	4.0(3.1-4.7)	3.3(2.8-4.4)	0.445
Lac, (mmol/L)	1.8(1.4-2.4)	2.4(2.1-4.9)	0.002	2.0(1.4-2.4)	1.9(1.6-2.9)	0.557
PaO ₂ /FiO ₂	249.1 (199.0-332.2)	96.0 (86.2-143.0)	<0.0001	383.4 (284.0-426.0)	300.0 (212.5-550.0)	0.462
WBC: White blood cell count; NEU: Neutrophil ; LYM :Lymphocyte count ; IL-6: Interleutin-6; PCT: Procalcitonin; CRP: C-reactive protein; FIB:Fibrinogen; Lac :lactic acid						
Supplementary Table 6: Effects of different dose of IVIG on clinical parameters in different patients						

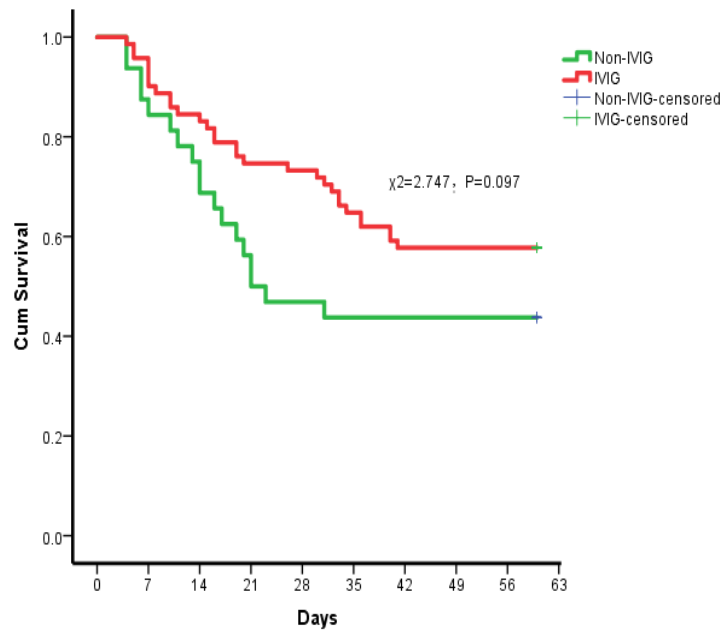
	Total (N=174)	IVIG>7D (N=16)	IVIG≤7D (N=158)	P value
WBC, (1×10 ⁹ /L)	6.7(4.6-10.2)	8.3(5.1-15.1)	6.6(4.5-9.8)	0.148
NEU,(1×10 ⁹ /L)	4.9(3.1-8.1)	7.3(3.3-14.7)	4.7(2.8-8.0)	0.114
LYM,(1×10 ⁹ /L)	0.9(0.6-1.4)	1.0(0.4-1.4)	0.9(0.6-1.4)	0.596
IL-6,(pg/ml)	9.8(4.0-36.2)	13.7(2.2-577.1)	9.6(4.4-32.9)	0.722
PCT,(ng/ml)	0.1(0-0.3)	1.8(0.1-6.6)	0.1(0-0.2)	0.016
CRP,(mg/L)	11.2(3.5-77.0)	32.7(0-123.6)	10.9(3.5-64.9)	0.450
FIB,(g/L)	3.6(2.8-4.5)	2.7(1.7-4.0)	3.9(3.0-4.7)	0.014
Lac, (mmol/L)	2.0(1.6-2.6)	2.4(1.9-8.4)	2.0(1.5-2.5)	0.085
PaO ₂ /FiO ₂	246.6(122.8-374.6)	91.0(69.6-314.3)	262.6(141.0-378.9)	0.022
WBC: White blood cell count; NEU: Neutrophil ; LYM :Lymphocyte count ; IL-6: Interleutin-6; PCT: Procalcitonin; CRP: C-reactive protein; FIB:Fibrinogen; Lac :lactic acid				
Supplementary Table 7: Effects of the timing of IVIG treatment on clinical parameters in all patients				

Supplementary Figure 1



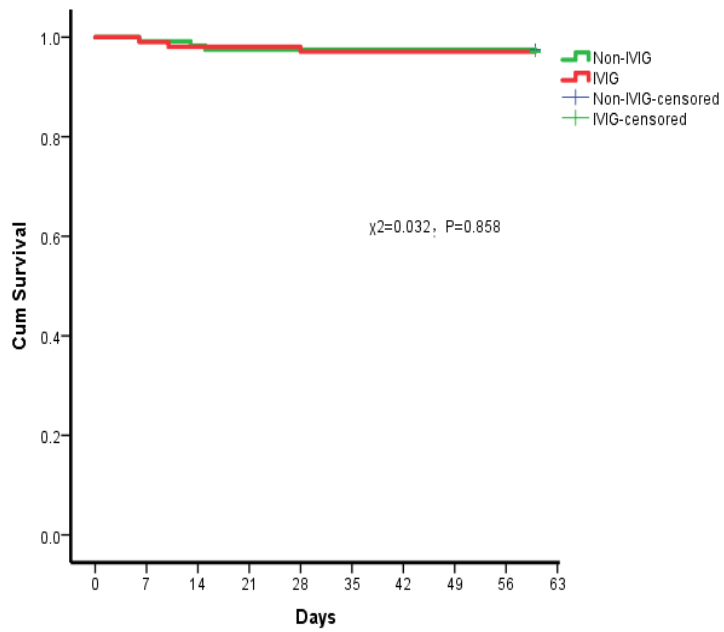
Supplementary Figure1: Effects of IVIG treatment on survival curves of 60-day mortality in all patients

Supplementary Figure 2



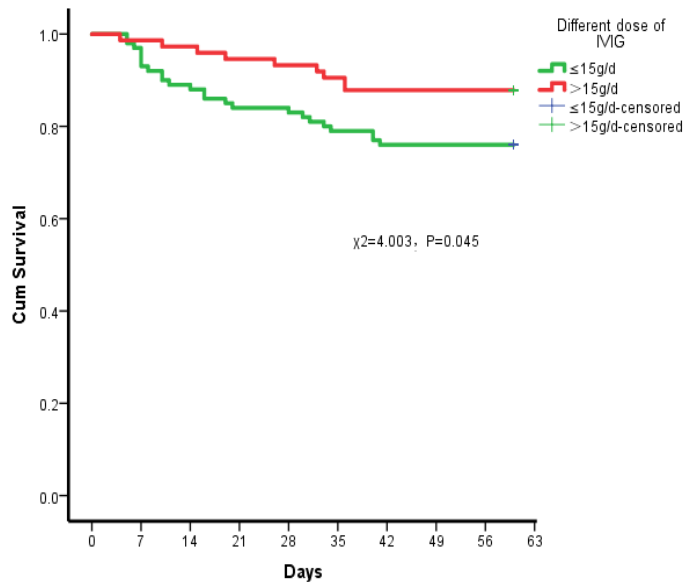
Supplementary Figure 2: Effects of IVIG treatment on Survival curves of 60-day mortality in patients with critical type

Supplementary Figure 3



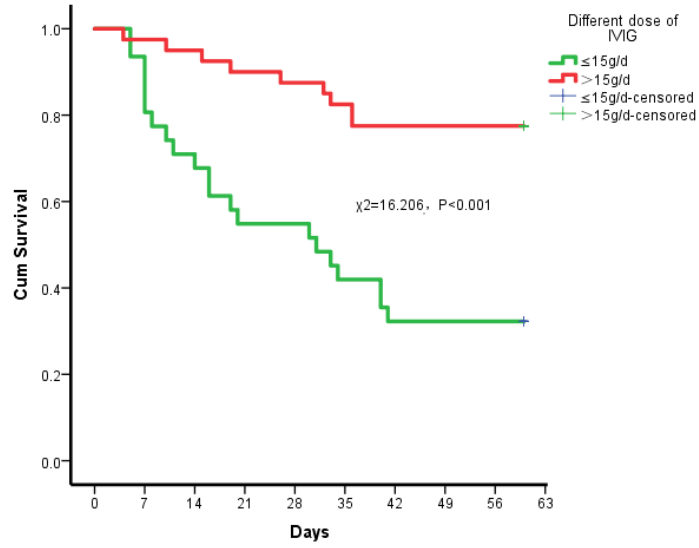
Supplementary Figure 3: Effects of IVIG treatment on Survival curves of 60-day mortality in patients with severe type

Supplementary Figure 4



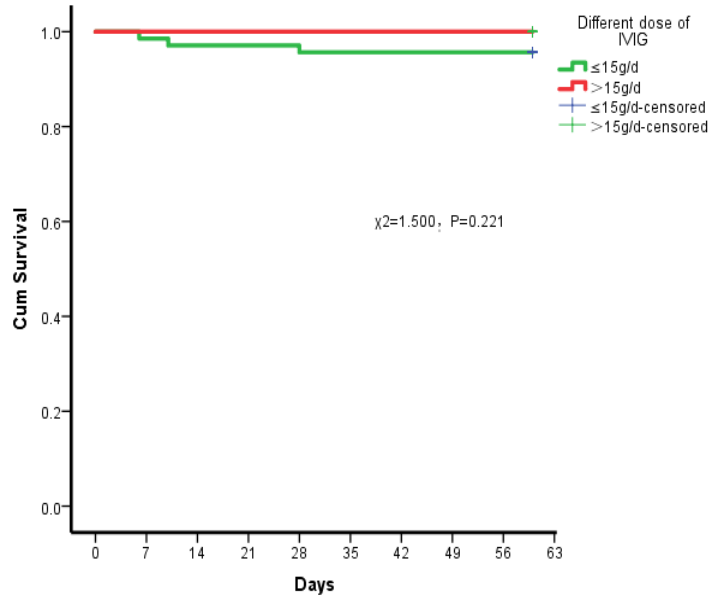
Supplementary Figure 4: effects of different dose of IVIG treatment on survival curves of 60-day mortality rate in all patients

Supplementary Figure 5



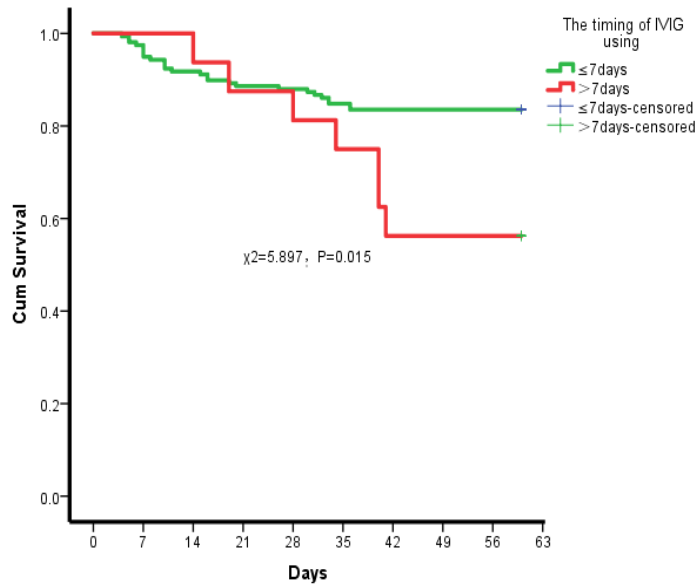
Supplementary Figure 5: effects of different dose of IVIG treatment on survival curves of 60-day mortality rate in patients with critical type

Supplementary Figure 6



Supplementary Figure 6: effects of different dose of IVIG treatment on survival curves of 60-day mortality rate in patients with severe type

Supplementary Figure 7



Supplementary Figure 7: effects of timing of IVIG treatment on survival curves of 60-day mortality rate in all patients