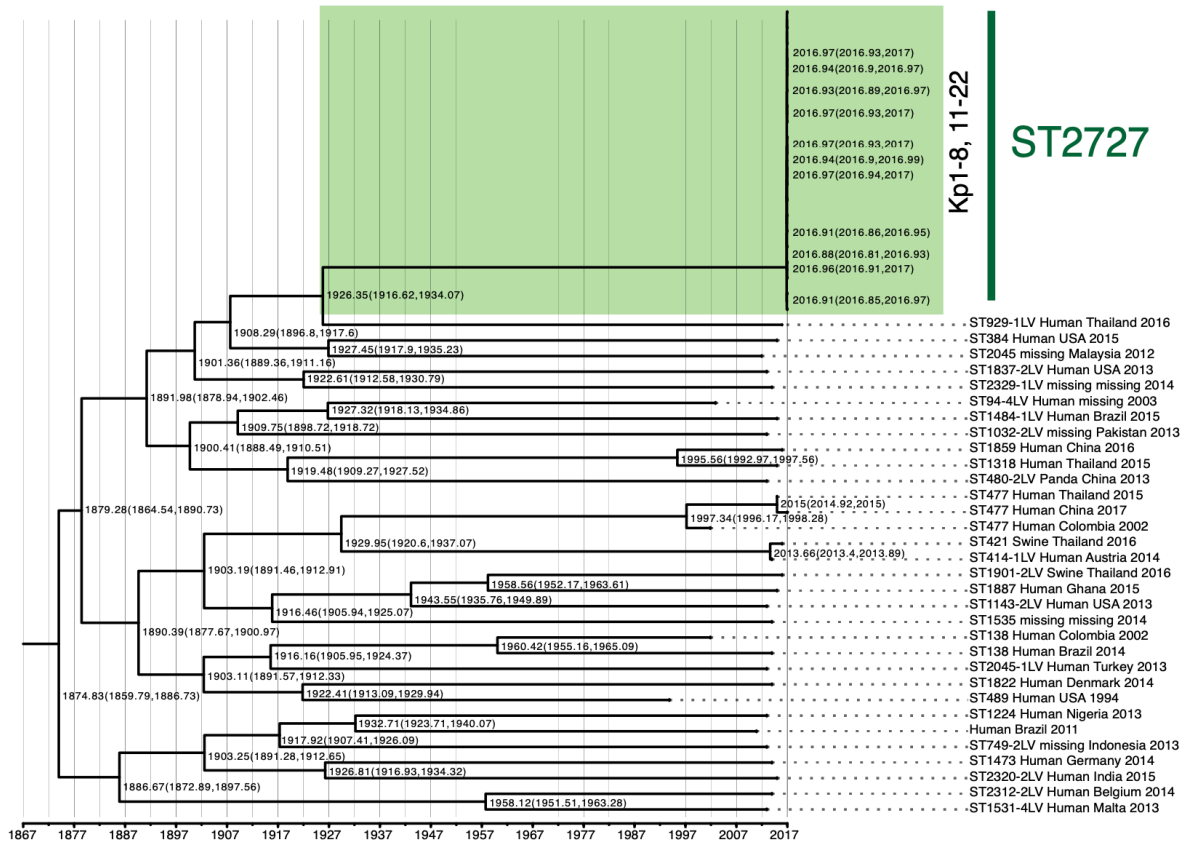


**Figure S1. Evolutionary relationships of *Klebsiella* species complex.** Maximum likelihood phylogeny was generated using >4000 genomes and pruned to 674 genomes maintaining phylogenetic structure. Scale bar represents nucleotide substitution rate per site.



**Figure S2. Time-calibrated phylogeny of KpIIB.** A dated tree was generated using LSD. The node labels represent the year of divergence with its confidence interval (95%). The scale is represented in years.

**Data S1.** Summary of all genomes used for the phylogenic analysis

[https://bridges.monash.edu/articles/Genomic\\_characteristics\\_of\\_4238\\_Klebsiella\\_genomes/11931231](https://bridges.monash.edu/articles/Genomic_characteristics_of_4238_Klebsiella_genomes/11931231)

**Table S1.** Assembly and annotation summary of *Klebsiella* isolates

Sample	MLST	Size	GC%	Scaffolds	Predicted genes		
					tRNA	rRNA	CDS
Kp1	ST2727	5,201,460	57	129	68	11	4709
Kp2	ST2727	5,200,839	57	133	74	10	4710
Kp3	ST2727	5,198,874	57	127	73	4	4707
Kp4	ST2727	5,199,425	57	91	74	7	4708
Kp5	ST2727	5,198,717	57	100	73	11	4712
Kp6	ST2727	5,197,993	57	64	75	10	4710
Kp7	ST2727	5,201,796	57	86	73	5	4714
Kp8	ST2727	5,192,865	57	76	75	5	4708
Kp11	ST2727	5,203,456	57	102	74	7	4715
Kp12	ST2727	5,195,751	57	93	69	5	4709
Kp13	ST2727	5,204,820	57	105	70	5	4711
Kp14	ST2727	5,197,183	57	122	70	11	4706
Kp15	ST2727	5,200,320	57	106	72	10	4711
Kp16	ST2727	5,201,484	57	112	75	9	4708
Kp17	ST2727	5,200,051	57	111	73	12	4711
Kp18	ST2727	5,207,110	57	149	75	5	4712
Kp19	ST2727	5,203,751	57	133	70	6	4709
Kp20	ST2727	5,211,171	57	180	73	6	4714
Kp21	ST2727	5,199,699	57	115	74	6	4708
Kp22	ST2727	5,202,717	57	142	71	10	4717

**Table S2.** Capsule serotype *K- locus* and *O-locus*.

Isolates	MLST	<i>In silico</i>		
		wzi	K_locus	O_locus
Kp1	ST2727	wzi56	KL55	O3/O3a
Kp2	ST2727	wzi56	KL55	O3/O3a
Kp3	ST2727	wzi56	KL55	O3/O3a
Kp4	ST2727	wzi56	KL55	O3/O3a
Kp5	ST2727	wzi56	KL55	O3/O3a
Kp6	ST2727	wzi56	KL55	O3/O3a
Kp7	ST2727	wzi56	KL55	O3/O3a
Kp8	ST2727	wzi56	KL55	O3/O3a
Kp11	ST2727	wzi56	KL55	O3/O3a
Kp12	ST2727	wzi56	KL55	O3/O3a
Kp13	ST2727	wzi56	KL55	O3/O3a
Kp14	ST2727	wzi56	KL55	O3/O3a
Kp15	ST2727	wzi56	KL55	O3/O3a
Kp16	ST2727	wzi56	KL55	O3/O3a
Kp17	ST2727	wzi56	KL55	O3/O3a
Kp18	ST2727	wzi56	KL55	O3/O3a
Kp19	ST2727	wzi56	KL55	O3/O3a
Kp20	ST2727	wzi56	KL55	O3/O3a
Kp21	ST2727	wzi56	KL55	O3/O3a
Kp22	ST2727	wzi56	KL55	O3/O3a

**Table S3.** Virulence features of 22 *K. pneumoniae* isolates.

Isolates	MLST	Experimental	In silico
		Virulence genes	Virulence genes
Kp1	ST2727	<i>uge, fimH-1, mrkD</i>	<i>allS, entA, entB, fimH, KfuB, KfuC, magA, mrkD, uge</i>
Kp2	ST2727	<i>uge, fimH-1, mrkD</i>	<i>allS, entA, entB, fimH, KfuB, KfuC, magA, mrkD, uge</i>
Kp3	ST2727	<i>uge, fimH-1, mrkD, kfuBC</i>	<i>allS, entA, entB, fimH, KfuB, KfuC, magA, mrkD, uge</i>
Kp4	ST2727	<i>uge, fimH-1, mrkD</i>	<i>allS, entA, entB, fimH, KfuB, KfuC, magA, mrkD, uge</i>
Kp5	ST2727	<i>uge, fimH-1, mrkD</i>	<i>allS, entA, entB, fimH, KfuB, KfuC, magA, mrkD, uge</i>
Kp6	ST2727	<i>uge, fimH-1, mrkD, ybtA,</i>	<i>allS, entA, entB, fimH, KfuB, KfuC, magA, mrkD, uge</i>
Kp7	ST2727	<i>uge, fimH-1, mrkD</i>	<i>allS, entA, entB, fimH, KfuB, KfuC, magA, mrkD, uge</i>
Kp8	ST2727	<i>uge, fimH-1, mrkD, kfuBC</i>	<i>allS, entA, entB, fimH, KfuB, KfuC, magA, mrkD, uge</i>
Kp11	ST2727	<i>uge, fimH-1, mrkD</i>	<i>allS, entA, entB, fimH, KfuB, KfuC, magA, mrkD, uge</i>
Kp12	ST2727	<i>uge, fimH-1, mrkD</i>	<i>allS, entA, entB, fimH, KfuB, KfuC, magA, mrkD, uge</i>
Kp13	ST2727	<i>uge, fimH-1, mrkD</i>	<i>allS, entA, entB, fimH, KfuB, KfuC, magA, mrkD, uge</i>
Kp14	ST2727	<i>uge, fimH-1, mrkD</i>	<i>allS, entA, entB, fimH, KfuB, KfuC, magA, mrkD, uge</i>
Kp15	ST2727	<i>uge, fimH-1, mrkD</i>	<i>allS, entA, entB, fimH, KfuB, KfuC, magA, mrkD, uge</i>
Kp16	ST2727	<i>uge, fimH-1, mrkD, iroN</i>	<i>allS, entA, entB, fimH, KfuB, KfuC, magA, mrkD, uge</i>
Kp17	ST2727	<i>uge, fimH-1, mrkD</i>	<i>allS, entA, entB, fimH, KfuB, KfuC, magA, mrkD, uge</i>
Kp18	ST2727	<i>uge, fimH-1, mrkD</i>	<i>allS, entA, entB, fimH, KfuB, KfuC, magA, mrkD, uge</i>
Kp19	ST2727	<i>uge, fimH-1, mrk, iroN</i>	<i>allS, entA, entB, fimH, KfuB, KfuC, magA, mrkD, uge</i>
Kp20	ST2727	<i>uge, fimH-1, mrkD</i>	<i>allS, entA, entB, fimH, KfuB, KfuC, magA, mrkD, uge</i>
Kp21	ST2727	<i>uge, fimH-1, mrkD, A</i>	<i>allS, entA, entB, fimH, KfuB, KfuC, magA, mrkD, uge</i>
Kp22	ST2727	<i>uge, fimH-1, mrkD, wcaG</i>	<i>allS, entA, entB, fimH, KfuB, KfuC, magA, mrkD, uge</i>

**Table S4.** Genes in ST2727 under negative selection

<b>Genes Product</b>	<b>Gene ID</b>
23S rRNA (adenine(1618)-N(6))-methyltransferase RlmF	WP_017900155.1
Alpha/beta hydrolase	WP_043519619.1
Arabinose operon transcriptional regulator AraC	WP_004204301.1
Carbohydrate ABC transporter permease	WP_004203287.1
Carbon starvation protein A	WP_004204173.1
Formate dehydrogenase-N subunit alpha	WP_121499582.1
HTH-type transcriptional activator AllS	WP_043521430.1
Isopenicillin N synthase family oxygenase	WP_043521356.1
LacI family DNA-binding transcriptional regulator	WP_043519228.1
LysR family transcriptional regulator	WP_043521817.1
MFS transporter	WP_043521375.1
MFS transporter	WP_043522250.1
MFS transporter	WP_052469705.1
Na <sup>+</sup> /H <sup>+</sup> antiporter	WP_002885082.1
NCS1 family nucleobase:cation symporter-1	WP_043519602.1
Nickel ABC transporter permease subunit NikC	WP_004202068.1
Peptidoglycan glycosyltransferase/peptidoglycan DD-transpeptidase MrcA	WP_043522602.1
ROK family transcriptional regulator	WP_004203282.1
Thiamine/thiamine pyrophosphate ABC transporter permease ThiP	WP_004204304.1
Transcriptional regulator FtrA	WP_043519534.1

**Table S5.** Genes in ST2727 under positive selection

<b>Gene Product</b>	<b>Gene ID</b>
ABC transporter ATP-binding protein	WP_012968222.1
AEC family transporter	WP_004203397.1
ATP-dependent helicase HrpB	WP_043521993.1
BMC domain-containing protein	WP_004182810.1
Efflux RND transporter permease subunit	WP_043519810.1
HlyD family secretion protein	WP_023291696.1
HslU--HslV peptidase ATPase subunit	WP_004203674.1
M20 family peptidase	WP_043519571.1
NADPH-dependent assimilatory sulfite reductase flavoprotein subunit	WP_043520757.1
Tautomerase family protein	WP_004203532.1