

Supplement

Apathy and diminished expression are not associated with ventral striatum volume in schizophrenia

Methods

Figure 1. Histogram of total grey matter volume of patients with schizophrenia (n=60)

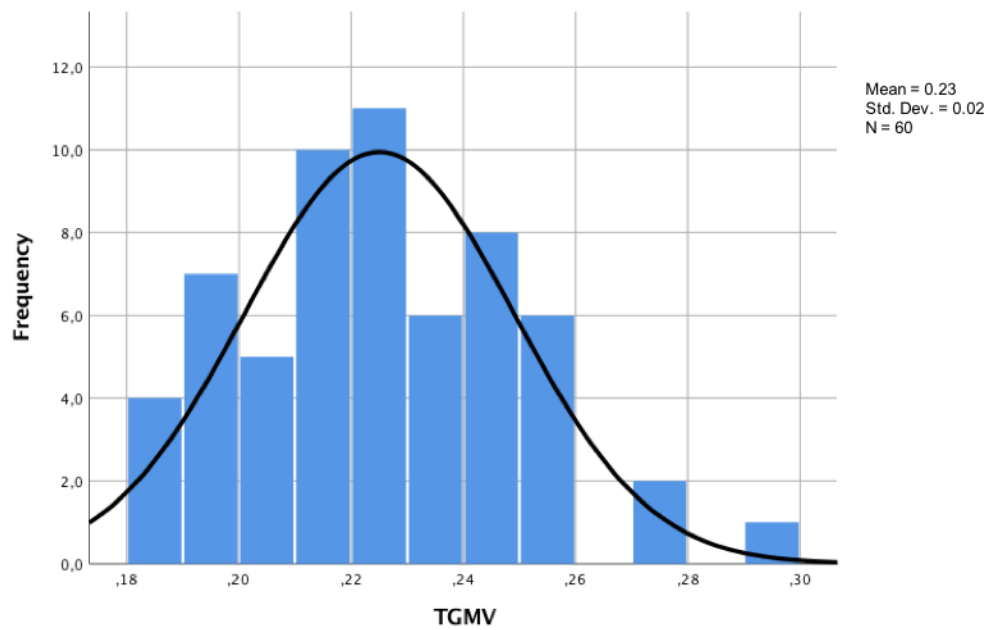


Figure 2. Histogram of total grey matter volume of healthy controls (n=58)

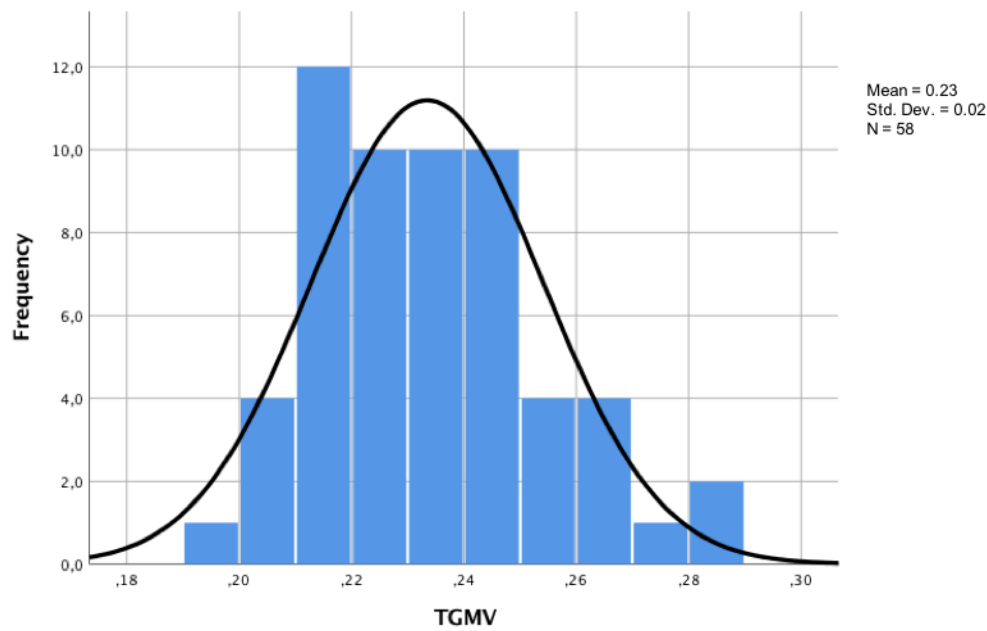
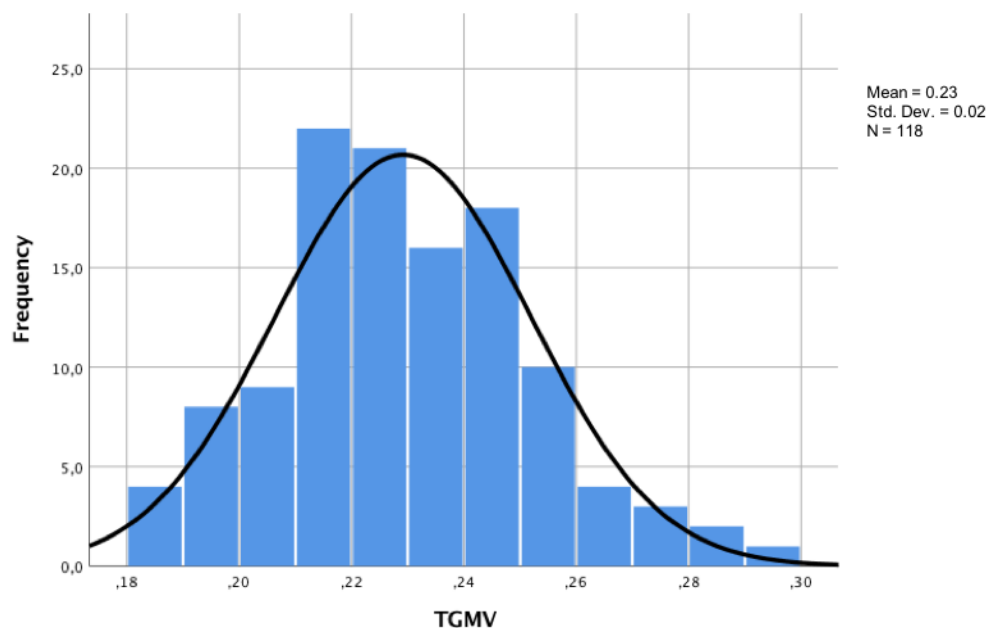


Figure 3. Histogram of total grey matter volume of patients and healthy controls (n=118)**Table 1. Antipsychotic medication of patients with schizophrenia**

| | |
|-------------------------------|----|
| First: major dose | |
| Second: minor or similar dose | |
| Clozapine | |
| Clozapine monotherapy | 5 |
| Clozapine + Paliperidone | 1 |
| Clozapine + Amisulpride | 1 |
| Clozapine + Aripiprazole | 4 |
| | |
| Olanzapine | |
| Olanzapine monotherapy | 6 |
| Olanzapine + Paliperidone | 1 |
| Olanzapine + Aripiprazole | 1 |
| Olanzapine + Quetiapine | 1 |
| Olanzapine + Haloperidole | 1 |
| | |
| Quetiapine | |
| Quetiapine monotherapy | 6 |
| Quetiapine + Paliperidone | 1 |
| Quetiapine + Aripiprazole | 1 |
| | |
| Risperidone | |
| Risperidone monotherapy | 11 |
| Risperidone + Quetiapine | 1 |
| Risperidone + Olanzapine | 1 |
| Risperidone + Aripiprazole | 1 |
| | |
| Paliperidone | |
| Paliperidone monotherapy | 3 |
| Paliperidone LAD | 2 |
| Paliperidone + Pipamperone | 1 |
| | |

| | |
|--------------------------------------|----------|
| Lurasidone monotherapy | 1 |
| | |
| Amisulpride | |
| Amisulpride monotherapy | 1 |
| Amisulpride + Quetiapine | 2 |
| Amisulpride + Pipamperone | 1 |
| | |
| Aripiprazole | |
| Aripiprazole monotherapy | 4 |
| Aripiprazole + Quetiapine (low dose) | 1 |
| | |
| No antipsychotic medication | 4 |
| Antipsychotic monotherapy | 36 |
| Antipsychotic combination | 20 |
| Total n | 60 |

Table 2. Additional medication of patients with schizophrenia

| Mood stabilizer | n | Antidepressant | n |
|----------------------------------------------------|---|--------------------------------------------------|----|
| Valproate | 6 | Fluoxetine | 1 |
| | | Paroxetine | 1 |
| | | Escitalopram | 6 |
| | | Sertraline | 2 |
| | | Venlafaxine | 1 |
| | | Trazodone | 1 |
| | | Mirtazapine | 2 |
| Total | 6 | Total | 14 |
| Mood stabilizer (Valproate) + antipsychotic | 4 | Antidepressant + antipsychotic | 13 |
| Mood stabilizer + antipsychotic + antidepressant | 1 | Antidepressant + mood stabilizer + antipsychotic | 1 |
| Monotherapy with mood stabilizer | 1 | Monotherapy with antidepressant | 0 |
| Total of patients receiving additional medication: | | | 19 |
| Antipsychotic + additional medication | | | 18 |
| Only additional medication | | | 1 |

Results

Group comparison

Using VBM, we did not observe any significant group differences in ventral or dorsal striatal volume between patients with schizophrenia and HC, (SVC, peak-level $p_{FWE} < 0.05$). However, exploratory whole brain analysis revealed reduced gray matter volume in the right insula in patients with schizophrenia compared to healthy controls (cluster-level $p_{FWE} = 0.009$, cluster size, $x,y,z=35.2,-17,12$) (Figure 4). This finding is in line with previous observation of reduced insula volume in patients with schizophrenia (Kuo and Pogue-Geile, 2019).

Figure 4. Cluster of reduced gray matter volume in the right insula in patients with schizophrenia compared to healthy controls (cluster-level $p_{FWE} = 0.009$, cluster size, $x,y,z=35.2,-17,12$)

