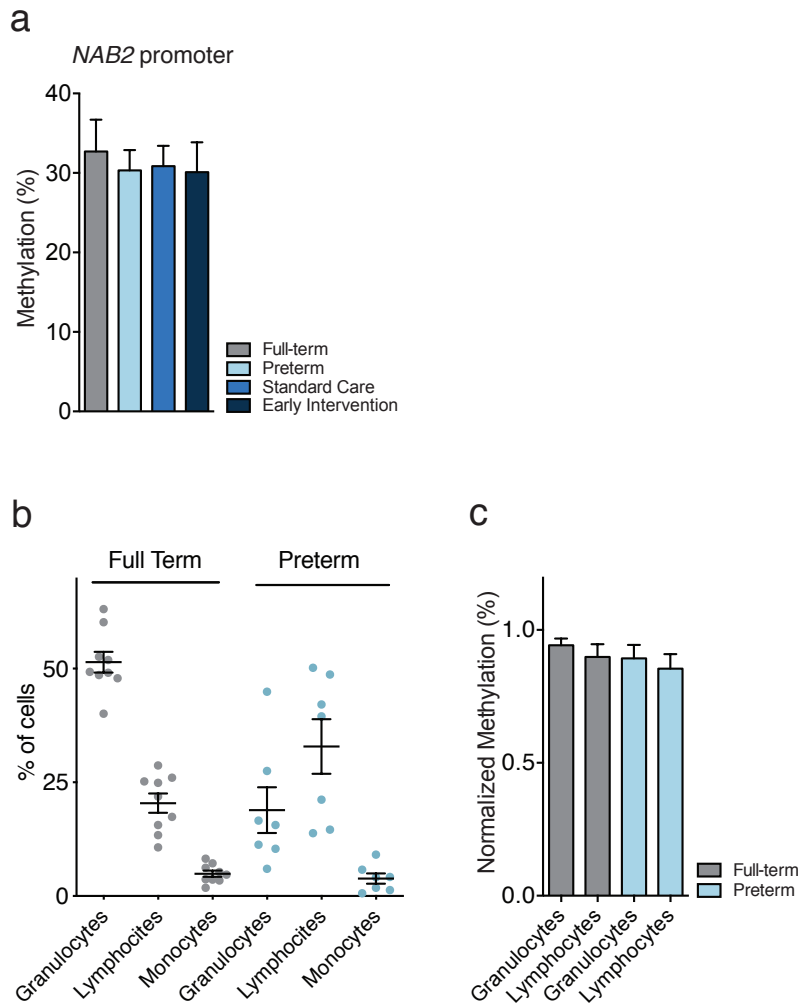


30 **Supplemental Figure 1. Early Intervention affects methylation of YY1 binding site in L1 promoter.**  
31 **a-d)** Methylation analysis of L1 promoter in cord blood of **a)** Full-term and **b)** Preterm at birth and  
32 peripheral blood of preterm infants at NICU discharge treated with **c)** Standard Care or **d)** Early  
33 Intervention. Each lollipop diagram displays sequences obtained from a representative sample for each  
34 group (black circle, methylated CpG; white circle, unmethylated CpG; x, absent CpG). Each row  
35 represents an individual Sanger sequence. Numbers at the top correspond to the CpG sites shown in  
36 Figure 3a. CpGs 2, 6 and 9 were excluded from methylation analysis due to the high degree of variability  
37 shown when compared to the consensus (see Methods). **e)** L1 promoter (CpG 1-10) methylation  
38 analysis in cord blood of full-term and preterm neonates at birth and in peripheral blood of preterm  
39 infants at NICU discharge treated with Standard Care or Early Intervention. \*\*\*  $p < 0.001$ , Full-term vs  
40 Preterm, unpaired two-tailed t test. **f)** L1 promoter (neural specific CpG 11-19) methylation analysis at  
41 the single CpG level. \*  $p = 0.047$ , Preterm vs Early Intervention, ANOVA with Tukey post hoc test. In **e)**  
42 and **f)**, data are represented as the mean percentage of methylation  $\pm$  s.e.m. (Full-term, n=20; Preterm,  
43 n=19; Standard Care, n=16; Early Intervention, n=17). **g)** Scatter plot and linear regression line with  
44 95% confidence band of weekly massages vs L1 promoter (CpG 1-10) methylation level in the Early  
45 Intervention group (n=17).  
46  
47

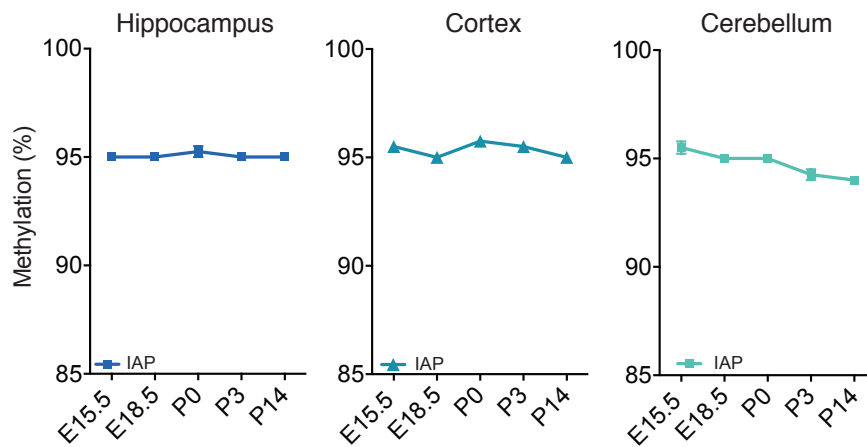
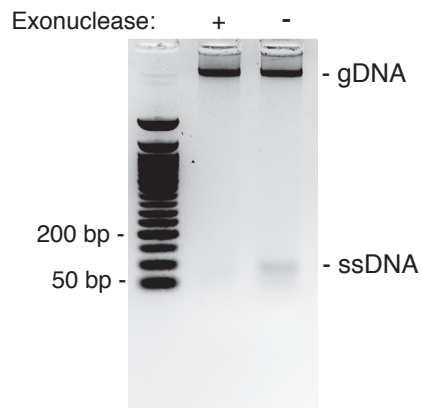


48

49 **Supplemental Figure 2. L1 promoter methylation dynamics are specific and are unrelated to cord**  
 50 **blood cell composition.**

51 **a)** Methylation analysis of *NAB2* promoter in cord blood of full-term (n = 3) and preterm (n = 6) neonates  
 52 at birth and in peripheral blood of preterm infants at NICU discharge that underwent Standard Care (n  
 53 = 3) or Early Intervention (n = 3). **b)** Mononuclear cell distribution based on CD45 staining, distinguishing  
 54 granulocytes, lymphocytes and monocytes. Phenotypical analysis was performed on cord blood of full-  
 55 term (n = 10) and preterm (n = 6) neonates at birth. **c)** Normalized methylation analysis of L1 promoter  
 56 in granulocytes and lymphocytes isolated from cord blood of full-term (n = 6) and preterm (n = 4)  
 57 neonates at birth. For each individual at least 12 independent randomly selected clones were analyzed.  
 58 Data are represented as the mean percentage of methylation  $\pm$  s.e.m.

59

**a****b**

60

61 **Supplemental Figure 3. IAP methylation levels do not change during mouse brain development.**

62 **a)** Methylation analysis of four CpG sites on IAPLTR1a elements (as reported in (31)) in mouse  
 63 hippocampus, cortex and cerebellum at different stages of embryonic (E15.5, E18.5) and postnatal (P0,  
 64 P3 and P14) development. For each organ and developmental stage samples from the same 4 mice  
 65 used in Figure 4 were analyzed. Cerebellum: E15.5 vs P3,  $p < 0.001$ ; E15.5 vs P14,  $p < 0.001$ ; E18.5  
 66 vs P3,  $p = 0.0484$ ; E18.5 vs P14,  $p = 0.007$ ; P0 vs P3,  $p = 0.0484$ ; P0 vs P14,  $p = 0.007$ , ANOVA with  
 67 Tukey post hoc test. Data are represented as the mean percentage of methylation  $\pm$  s.e.m. **b)** Control  
 68 of exonuclease I treatment run on 2.2% agarose gel representing the efficiency of exonuclease I  
 69 digestion of a single strand oligonucleotide of 120 bp.



| Organ       | Age   | Forward Primer Name | Forward Primer sequence 5' - 3'              | Reverse Primer Name | Reverse Primer sequence 5' - 3'       |
|-------------|-------|---------------------|----------------------------------------------|---------------------|---------------------------------------|
| Cortex      | E15.5 | Fwd_IAP_7           | <b>CAGATC</b> GATAGTTGTGTTTAAAGTGGTAAATAAATA | Rev_IAP_1           | <b>ATCACG</b> ACCAAAATACAAAAACAAAAAAA |
| Cortex      | E18.5 | Fwd_IAP_8           | <b>ACTTGA</b> GATAGTTGTGTTTAAAGTGGTAAATAAATA | Rev_IAP_1           | <b>ATCACG</b> ACCAAAATACAAAAACAAAAAAA |
| Cortex      | P0    | Fwd_IAP_9           | <b>GATCAG</b> GATAGTTGTGTTTAAAGTGGTAAATAAATA | Rev_IAP_1           | <b>ATCACG</b> ACCAAAATACAAAAACAAAAAAA |
| Cortex      | P3    | Fwd_IAP_10          | <b>TAGCTT</b> GATAGTTGTGTTTAAAGTGGTAAATAAATA | Rev_IAP_1           | <b>ATCACG</b> ACCAAAATACAAAAACAAAAAAA |
| Cortex      | P14   | Fwd_IAP_12          | <b>CTTGTA</b> GATAGTTGTGTTTAAAGTGGTAAATAAATA | Rev_IAP_1           | <b>ATCACG</b> ACCAAAATACAAAAACAAAAAAA |
| Hippocampus | E15.5 | Fwd_IAP_13          | <b>AGTCAA</b> GATAGTTGTGTTTAAAGTGGTAAATAAATA | Rev_IAP_1           | <b>ATCACG</b> ACCAAAATACAAAAACAAAAAAA |
| Hippocampus | E18.5 | Fwd_IAP_14          | <b>AGTTCC</b> GATAGTTGTGTTTAAAGTGGTAAATAAATA | Rev_IAP_1           | <b>ATCACG</b> ACCAAAATACAAAAACAAAAAAA |
| Hippocampus | P0    | Fwd_IAP_15          | <b>ATGTCA</b> GATAGTTGTGTTTAAAGTGGTAAATAAATA | Rev_IAP_1           | <b>ATCACG</b> ACCAAAATACAAAAACAAAAAAA |
| Hippocampus | P3    | Fwd_IAP_16          | <b>CGTCC</b> GATAGTTGTGTTTAAAGTGGTAAATAAATA  | Rev_IAP_1           | <b>ATCACG</b> ACCAAAATACAAAAACAAAAAAA |
| Hippocampus | P14   | Fwd_IAP_19          | <b>GTGAAA</b> GATAGTTGTGTTTAAAGTGGTAAATAAATA | Rev_IAP_1           | <b>ATCACG</b> ACCAAAATACAAAAACAAAAAAA |
| Cerebellum  | E15.5 | Fwd_IAP_20          | <b>GTGGCC</b> GATAGTTGTGTTTAAAGTGGTAAATAAATA | Rev_IAP_1           | <b>ATCACG</b> ACCAAAATACAAAAACAAAAAAA |
| Cerebellum  | E18.5 | Fwd_IAP_21          | <b>GTTTCG</b> GATAGTTGTGTTTAAAGTGGTAAATAAATA | Rev_IAP_1           | <b>ATCACG</b> ACCAAAATACAAAAACAAAAAAA |
| Cerebellum  | P0    | Fwd_IAP_22          | <b>CGTACG</b> GATAGTTGTGTTTAAAGTGGTAAATAAATA | Rev_IAP_1           | <b>ATCACG</b> ACCAAAATACAAAAACAAAAAAA |
| Cerebellum  | P3    | Fwd_IAP_23          | <b>GAGTGG</b> GATAGTTGTGTTTAAAGTGGTAAATAAATA | Rev_IAP_1           | <b>ATCACG</b> ACCAAAATACAAAAACAAAAAAA |
| Cerebellum  | P14   | Fwd_IAP_27          | <b>ATTCTT</b> GATAGTTGTGTTTAAAGTGGTAAATAAATA | Rev_IAP_1           | <b>ATCACG</b> ACCAAAATACAAAAACAAAAAAA |
| Cortex      | E15.5 | Fwd_IAP_7           | <b>CAGATC</b> GATAGTTGTGTTTAAAGTGGTAAATAAATA | Rev_IAP_2           | <b>CGATGT</b> ACCAAAATACAAAAACAAAAAAA |
| Cortex      | E18.5 | Fwd_IAP_8           | <b>ACTTGA</b> GATAGTTGTGTTTAAAGTGGTAAATAAATA | Rev_IAP_2           | <b>CGATGT</b> ACCAAAATACAAAAACAAAAAAA |
| Cortex      | P0    | Fwd_IAP_9           | <b>GATCAG</b> GATAGTTGTGTTTAAAGTGGTAAATAAATA | Rev_IAP_2           | <b>CGATGT</b> ACCAAAATACAAAAACAAAAAAA |
| Cortex      | P3    | Fwd_IAP_10          | <b>TAGCTT</b> GATAGTTGTGTTTAAAGTGGTAAATAAATA | Rev_IAP_2           | <b>CGATGT</b> ACCAAAATACAAAAACAAAAAAA |
| Cortex      | P14   | Fwd_IAP_12          | <b>CTTGTA</b> GATAGTTGTGTTTAAAGTGGTAAATAAATA | Rev_IAP_2           | <b>CGATGT</b> ACCAAAATACAAAAACAAAAAAA |
| Hippocampus | E15.5 | Fwd_IAP_13          | <b>AGTCAA</b> GATAGTTGTGTTTAAAGTGGTAAATAAATA | Rev_IAP_2           | <b>CGATGT</b> ACCAAAATACAAAAACAAAAAAA |
| Hippocampus | E18.5 | Fwd_IAP_14          | <b>AGTTCC</b> GATAGTTGTGTTTAAAGTGGTAAATAAATA | Rev_IAP_2           | <b>CGATGT</b> ACCAAAATACAAAAACAAAAAAA |
| Hippocampus | P0    | Fwd_IAP_15          | <b>ATGTCA</b> GATAGTTGTGTTTAAAGTGGTAAATAAATA | Rev_IAP_2           | <b>CGATGT</b> ACCAAAATACAAAAACAAAAAAA |
| Hippocampus | P3    | Fwd_IAP_16          | <b>CGTCC</b> GATAGTTGTGTTTAAAGTGGTAAATAAATA  | Rev_IAP_2           | <b>CGATGT</b> ACCAAAATACAAAAACAAAAAAA |
| Hippocampus | P14   | Fwd_IAP_19          | <b>GTGAAA</b> GATAGTTGTGTTTAAAGTGGTAAATAAATA | Rev_IAP_2           | <b>CGATGT</b> ACCAAAATACAAAAACAAAAAAA |
| Cerebellum  | E15.5 | Fwd_IAP_20          | <b>GTGGCC</b> GATAGTTGTGTTTAAAGTGGTAAATAAATA | Rev_IAP_2           | <b>CGATGT</b> ACCAAAATACAAAAACAAAAAAA |
| Cerebellum  | E18.5 | Fwd_IAP_21          | <b>GTTTCG</b> GATAGTTGTGTTTAAAGTGGTAAATAAATA | Rev_IAP_2           | <b>CGATGT</b> ACCAAAATACAAAAACAAAAAAA |
| Cerebellum  | P0    | Fwd_IAP_22          | <b>CGTACG</b> GATAGTTGTGTTTAAAGTGGTAAATAAATA | Rev_IAP_2           | <b>CGATGT</b> ACCAAAATACAAAAACAAAAAAA |
| Cerebellum  | P3    | Fwd_IAP_23          | <b>GAGTGG</b> GATAGTTGTGTTTAAAGTGGTAAATAAATA | Rev_IAP_2           | <b>CGATGT</b> ACCAAAATACAAAAACAAAAAAA |
| Cerebellum  | P14   | Fwd_IAP_27          | <b>ATTCTT</b> GATAGTTGTGTTTAAAGTGGTAAATAAATA | Rev_IAP_2           | <b>CGATGT</b> ACCAAAATACAAAAACAAAAAAA |
| Cortex      | E15.5 | Fwd_IAP_7           | <b>CAGATC</b> GATAGTTGTGTTTAAAGTGGTAAATAAATA | Rev_IAP_3           | <b>TTAGGC</b> ACCAAAATACAAAAACAAAAAAA |
| Cortex      | E18.5 | Fwd_IAP_8           | <b>ACTTGA</b> GATAGTTGTGTTTAAAGTGGTAAATAAATA | Rev_IAP_3           | <b>TTAGGC</b> ACCAAAATACAAAAACAAAAAAA |
| Cortex      | P0    | Fwd_IAP_9           | <b>GATCAG</b> GATAGTTGTGTTTAAAGTGGTAAATAAATA | Rev_IAP_3           | <b>TTAGGC</b> ACCAAAATACAAAAACAAAAAAA |
| Cortex      | P3    | Fwd_IAP_10          | <b>TAGCTT</b> GATAGTTGTGTTTAAAGTGGTAAATAAATA | Rev_IAP_3           | <b>TTAGGC</b> ACCAAAATACAAAAACAAAAAAA |
| Cortex      | P14   | Fwd_IAP_12          | <b>CTTGTA</b> GATAGTTGTGTTTAAAGTGGTAAATAAATA | Rev_IAP_3           | <b>TTAGGC</b> ACCAAAATACAAAAACAAAAAAA |
| Hippocampus | E15.5 | Fwd_IAP_13          | <b>AGTCAA</b> GATAGTTGTGTTTAAAGTGGTAAATAAATA | Rev_IAP_3           | <b>TTAGGC</b> ACCAAAATACAAAAACAAAAAAA |
| Hippocampus | E18.5 | Fwd_IAP_14          | <b>AGTTCC</b> GATAGTTGTGTTTAAAGTGGTAAATAAATA | Rev_IAP_3           | <b>TTAGGC</b> ACCAAAATACAAAAACAAAAAAA |
| Hippocampus | P0    | Fwd_IAP_15          | <b>ATGTCA</b> GATAGTTGTGTTTAAAGTGGTAAATAAATA | Rev_IAP_3           | <b>TTAGGC</b> ACCAAAATACAAAAACAAAAAAA |
| Hippocampus | P3    | Fwd_IAP_16          | <b>CGTCC</b> GATAGTTGTGTTTAAAGTGGTAAATAAATA  | Rev_IAP_3           | <b>TTAGGC</b> ACCAAAATACAAAAACAAAAAAA |
| Hippocampus | P14   | Fwd_IAP_19          | <b>GTGAAA</b> GATAGTTGTGTTTAAAGTGGTAAATAAATA | Rev_IAP_3           | <b>TTAGGC</b> ACCAAAATACAAAAACAAAAAAA |
| Cerebellum  | E15.5 | Fwd_IAP_20          | <b>GTGGCC</b> GATAGTTGTGTTTAAAGTGGTAAATAAATA | Rev_IAP_3           | <b>TTAGGC</b> ACCAAAATACAAAAACAAAAAAA |
| Cerebellum  | E18.5 | Fwd_IAP_21          | <b>GTTTCG</b> GATAGTTGTGTTTAAAGTGGTAAATAAATA | Rev_IAP_3           | <b>TTAGGC</b> ACCAAAATACAAAAACAAAAAAA |
| Cerebellum  | P0    | Fwd_IAP_22          | <b>CGTACG</b> GATAGTTGTGTTTAAAGTGGTAAATAAATA | Rev_IAP_3           | <b>TTAGGC</b> ACCAAAATACAAAAACAAAAAAA |
| Cerebellum  | P3    | Fwd_IAP_23          | <b>GAGTGG</b> GATAGTTGTGTTTAAAGTGGTAAATAAATA | Rev_IAP_3           | <b>TTAGGC</b> ACCAAAATACAAAAACAAAAAAA |
| Cerebellum  | P14   | Fwd_IAP_27          | <b>ATTCTT</b> GATAGTTGTGTTTAAAGTGGTAAATAAATA | Rev_IAP_3           | <b>TTAGGC</b> ACCAAAATACAAAAACAAAAAAA |
| Cortex      | E15.5 | Fwd_IAP_7           | <b>CAGATC</b> GATAGTTGTGTTTAAAGTGGTAAATAAATA | Rev_IAP_4           | <b>TGACCA</b> ACCAAAATACAAAAACAAAAAAA |
| Cortex      | E18.5 | Fwd_IAP_8           | <b>ACTTGA</b> GATAGTTGTGTTTAAAGTGGTAAATAAATA | Rev_IAP_4           | <b>TGACCA</b> ACCAAAATACAAAAACAAAAAAA |
| Cortex      | P0    | Fwd_IAP_9           | <b>GATCAG</b> GATAGTTGTGTTTAAAGTGGTAAATAAATA | Rev_IAP_4           | <b>TGACCA</b> ACCAAAATACAAAAACAAAAAAA |
| Cortex      | P3    | Fwd_IAP_10          | <b>TAGCTT</b> GATAGTTGTGTTTAAAGTGGTAAATAAATA | Rev_IAP_4           | <b>TGACCA</b> ACCAAAATACAAAAACAAAAAAA |
| Cortex      | P14   | Fwd_IAP_12          | <b>CTTGTA</b> GATAGTTGTGTTTAAAGTGGTAAATAAATA | Rev_IAP_4           | <b>TGACCA</b> ACCAAAATACAAAAACAAAAAAA |
| Hippocampus | E15.5 | Fwd_IAP_13          | <b>AGTCAA</b> GATAGTTGTGTTTAAAGTGGTAAATAAATA | Rev_IAP_4           | <b>TGACCA</b> ACCAAAATACAAAAACAAAAAAA |
| Hippocampus | E18.5 | Fwd_IAP_14          | <b>AGTTCC</b> GATAGTTGTGTTTAAAGTGGTAAATAAATA | Rev_IAP_4           | <b>TGACCA</b> ACCAAAATACAAAAACAAAAAAA |
| Hippocampus | P0    | Fwd_IAP_15          | <b>ATGTCA</b> GATAGTTGTGTTTAAAGTGGTAAATAAATA | Rev_IAP_4           | <b>TGACCA</b> ACCAAAATACAAAAACAAAAAAA |
| Hippocampus | P3    | Fwd_IAP_16          | <b>CGTCC</b> GATAGTTGTGTTTAAAGTGGTAAATAAATA  | Rev_IAP_4           | <b>TGACCA</b> ACCAAAATACAAAAACAAAAAAA |
| Hippocampus | P14   | Fwd_IAP_19          | <b>GTGAAA</b> GATAGTTGTGTTTAAAGTGGTAAATAAATA | Rev_IAP_4           | <b>TGACCA</b> ACCAAAATACAAAAACAAAAAAA |
| Cerebellum  | E15.5 | Fwd_IAP_20          | <b>GTGGCC</b> GATAGTTGTGTTTAAAGTGGTAAATAAATA | Rev_IAP_4           | <b>TGACCA</b> ACCAAAATACAAAAACAAAAAAA |
| Cerebellum  | E18.5 | Fwd_IAP_21          | <b>GTTTCG</b> GATAGTTGTGTTTAAAGTGGTAAATAAATA | Rev_IAP_4           | <b>TGACCA</b> ACCAAAATACAAAAACAAAAAAA |
| Cerebellum  | P0    | Fwd_IAP_22          | <b>CGTACG</b> GATAGTTGTGTTTAAAGTGGTAAATAAATA | Rev_IAP_4           | <b>TGACCA</b> ACCAAAATACAAAAACAAAAAAA |
| Cerebellum  | P3    | Fwd_IAP_23          | <b>GAGTGG</b> GATAGTTGTGTTTAAAGTGGTAAATAAATA | Rev_IAP_4           | <b>TGACCA</b> ACCAAAATACAAAAACAAAAAAA |
| Cerebellum  | P14   | Fwd_IAP_27          | <b>ATTCTT</b> GATAGTTGTGTTTAAAGTGGTAAATAAATA | Rev_IAP_4           | <b>TGACCA</b> ACCAAAATACAAAAACAAAAAAA |

71

72 **Supplemental Table 1.**

73 List of the primer sequences used in L1MdTf and IAPLTR1a methylation analysis in mice to  
74 unambiguously identify each organ in each developmental stage in the bisulfite sequencing analysis.

75 Primer indexes are in bold.