

Deep-learning-based Prediction of Late Age-Related Macular Degeneration Progression

Qi Yan^{1,*}, Daniel E. Weeks^{2,3}, Hongyi Xin¹, Heng Huang⁴, Anand Swaroop⁵, Emily Y. Chew⁶,
Ying Ding^{3,*}, Wei Chen^{1,2,3,*}

¹Division of Pulmonary Medicine, Department of Pediatrics, Children's Hospital of Pittsburgh of UPMC, University of Pittsburgh, Pittsburgh, PA;

²Department of Human Genetics, Graduate School of Public Health, University of Pittsburgh, PA;

³Department of Biostatistics, Graduate School of Public Health, University of Pittsburgh, Pittsburgh, PA;

⁴Department of Electrical and Computer Engineering, Swanson School of Engineering, University of Pittsburgh, Pittsburgh, PA;

⁵Neurobiology Neurodegeneration and Repair Laboratory, National Eye Institute, National Institutes of Health, Bethesda, MD;

⁶Division of Epidemiology and Clinical Applications, National Eye Institute, National Institutes of Health, Bethesda, MD.

*These authors contributed equally

The 3-level AMD severity classification

No AMD (level 0) was coded as 00, early or intermediate AMD (level 1) was coded as 10 and late AMD (level 2) was coded as 11 (Table S1) so that the order of classes could be learned. The performance metric used was accuracy of predicted labels. The predicted labels were determined based on the highest predicted label probability. For the predicted probability of each label:

$$P_{label} = \begin{cases} P(\text{dummy1} = 0) * P(\text{dummy2} = 0), & \text{if } 00 \\ P(\text{dummy1} = 1) * P(\text{dummy2} = 0), & \text{if } 10 \\ P(\text{dummy1} = 1) * P(\text{dummy2} = 1), & \text{if } 11 \end{cases}$$

where $P(\text{dummy1} = 0)$ is the predicted probability of 0 for dummy1 and $P(\text{dummy1} = 1)$ is the predicted probability of 1 for dummy1. It is analogous to dummy2. The label was assigned by the highest probability. For example, if $P(\text{dummy1} = 1) * P(\text{dummy2} = 1)$ had the highest probability, the predicted label would be late AMD. Then, the accuracy was the number of correct predicted labels divided by the sample size. Note that the random accuracy is one out of three, 0.33.

Table S1. Dummy variables for eye AMD severity at the current visit

	dummy1	dummy2
no AMD	0	0
intermediate AMD	1	0
late AMD	1	1

Table S2. The 3-level AMD severity classification accuracy (no AMD, early or intermediate AMD and late AMD)

Fundus images used for classification with progression cutoff	Img -> <i>AMDstate</i> -> Risk	Img -> <i>AMDstate</i> + Geno -> Risk*
2 years	0.57	0.58
3 years	0.56	0.57
4 years	0.59	0.58
5 years	0.60	0.60
6 years	0.60	0.60
7 years	0.59	0.60

* Img = fundus images; AMDstate = the AMD severity at the current visit; Risk = the probability of late-AMD progression exceeding the cutoff durations; and Geno = 52 reported SNPs.

Table S3. Youden indices for dichotomizing the prediction of probability of late-AMD progression exceeding the cutoff durations for models with fundus image only and six cutoff years

		2 years	3 years	4 years	5 years	6 years	7 years
Youden indices	Img -> Risk*	0.69	0.61	0.67	0.50	0.52	0.42
	Img -> <i>AMDstate</i> -> Risk	0.78	0.29	0.43	0.46	0.50	0.34

* The probability of late-AMD progression exceeding the cutoff durations.

Figure S1. The number of useable fundus images for prediction before and after the cutoff years (2, 3, 4, 5, 6 and 7 years)

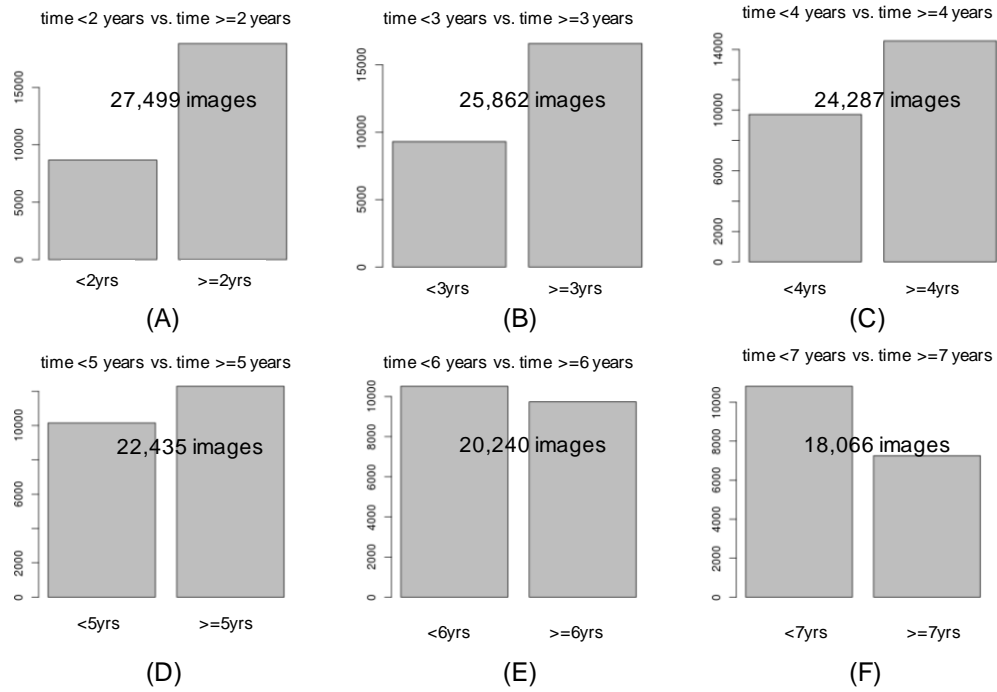


Figure S2. Four models of convolutional neural network (CNN) for AMD progression time prediction. (1) fundus images predicting late-AMD progression exceeding the cutoff durations; (2) fundus images + genotypes predicting late-AMD progression exceeding the cutoff durations; (3) fundus images both classifying current AMD severity and predicting late-AMD progression exceeding the cutoff durations; and (4) fundus images + genotypes both classifying current AMD severity and predicting late-AMD progression exceeding the cutoff durations.

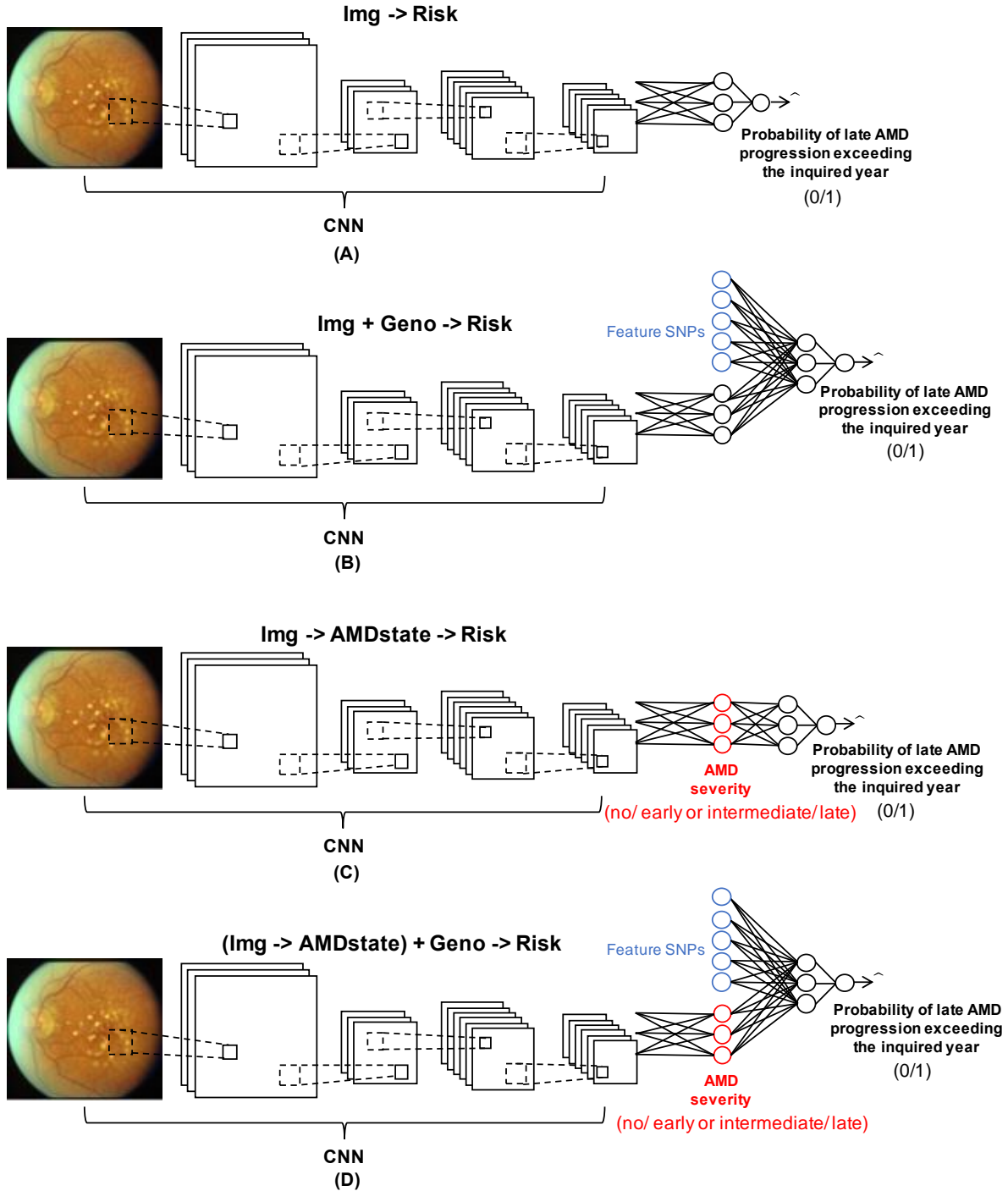


Figure S3. Density curves of the predicted probability of having late AMD progression time before or after each of the six cutoff years for four models. Each column is one model and each row is one cutoff year.

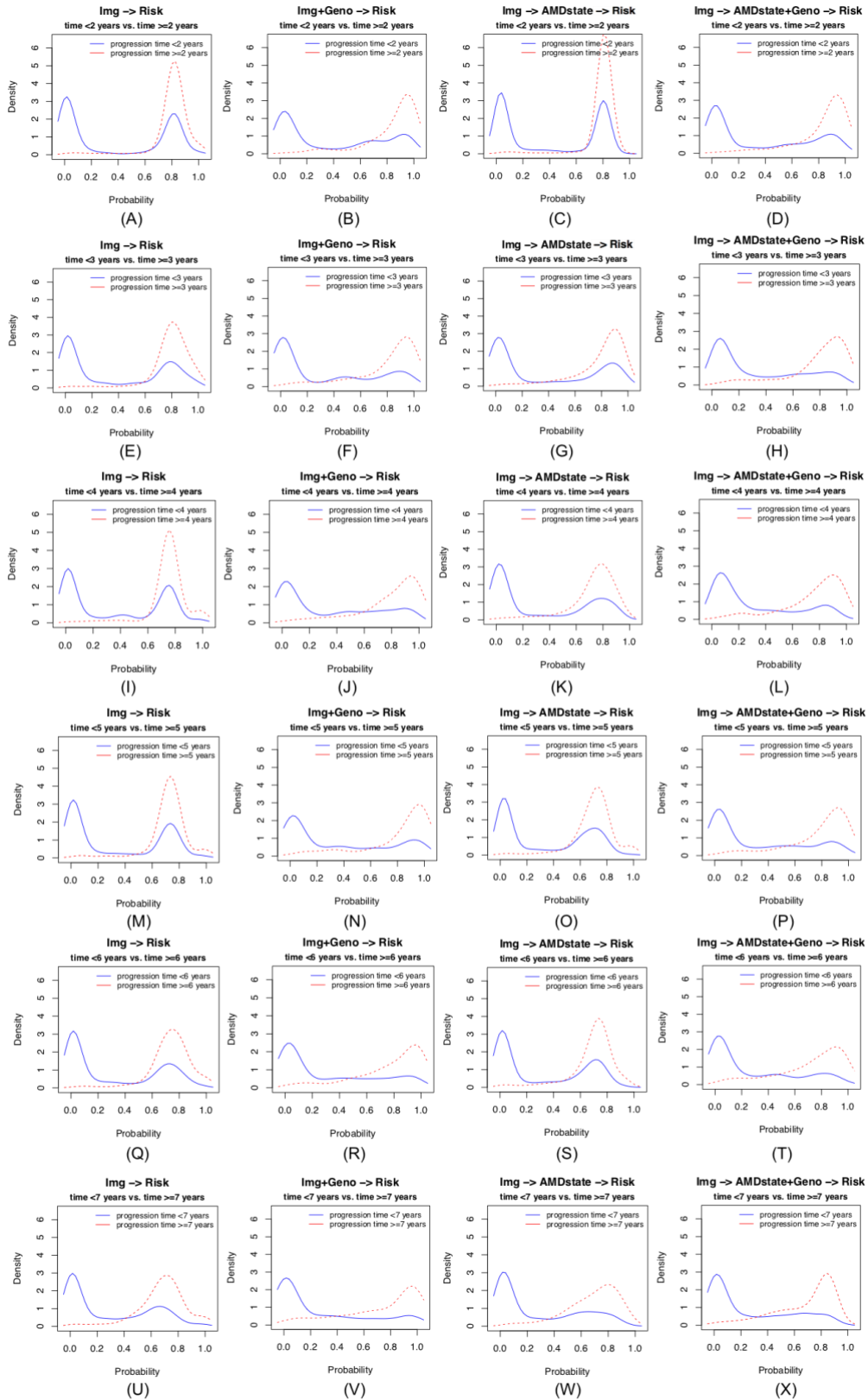


Figure S4. ROC curves of the classification of late AMD progression exceeding the cutoff duration of 3 years for four models using 200 Caucasians from UK Biobank. The four models are (1) fundus images predicting late-AMD progression exceeding 3 years; (2) fundus images + genotypes predicting late-AMD progression exceeding 3 years; (3) fundus images both classifying current AMD severity and predicting late-AMD progression exceeding 3 years; and (4) fundus images + genotypes both classifying current AMD severity and predicting late-AMD progression exceeding 3 years.

