

Supplementary Materials List

Fig. S1. Sample lung histology from mice treated with subcutaneous bleomycin reveals the absence of lung fibrosis.

Fig. S2. Enrichment of fibroblast-specific transcripts in sorted dermal populations.

Fig. S3. Chemokine expression in the skin draining lymph nodes of REX3 mice treated with subcutaneous bleomycin.

Fig. S4. Chemokine expression in the epidermis of REX3 mice treated with subcutaneous bleomycin.

Fig. S5. Sex differences in baseline collagen production in hydroxyproline assay.

Table S1. Flow antibodies and clones used for this study.

Supplementary Figures and Legends:

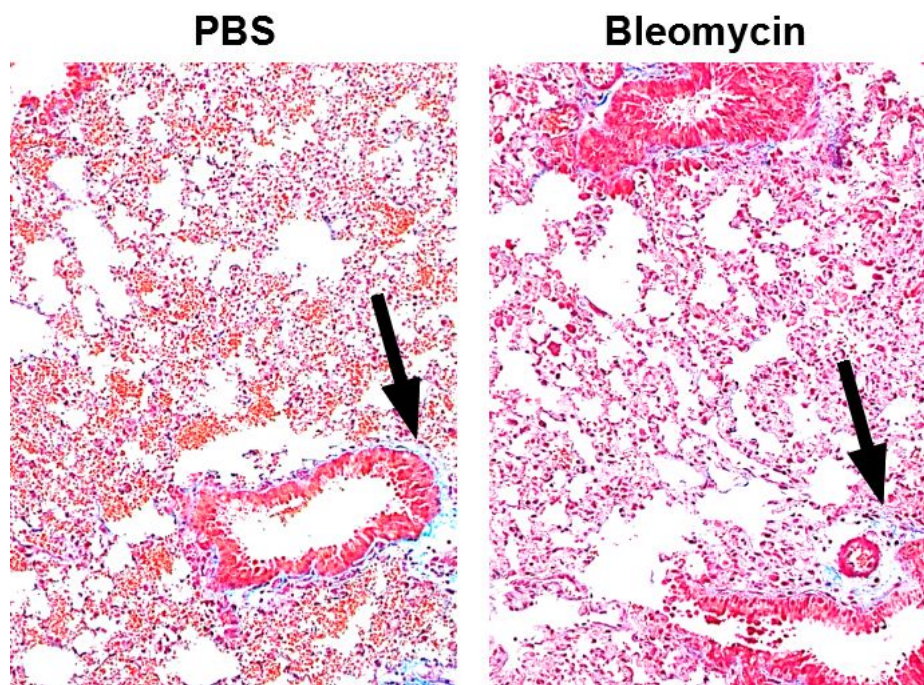


Fig. S1. Sample lung histology from mice treated with subcutaneous bleomycin. Lung histology reveals the absence of lung fibrosis; black arrows highlight similar levels of Trichrome staining in PBS and subcutaneous bleomycin treated animals (10x).

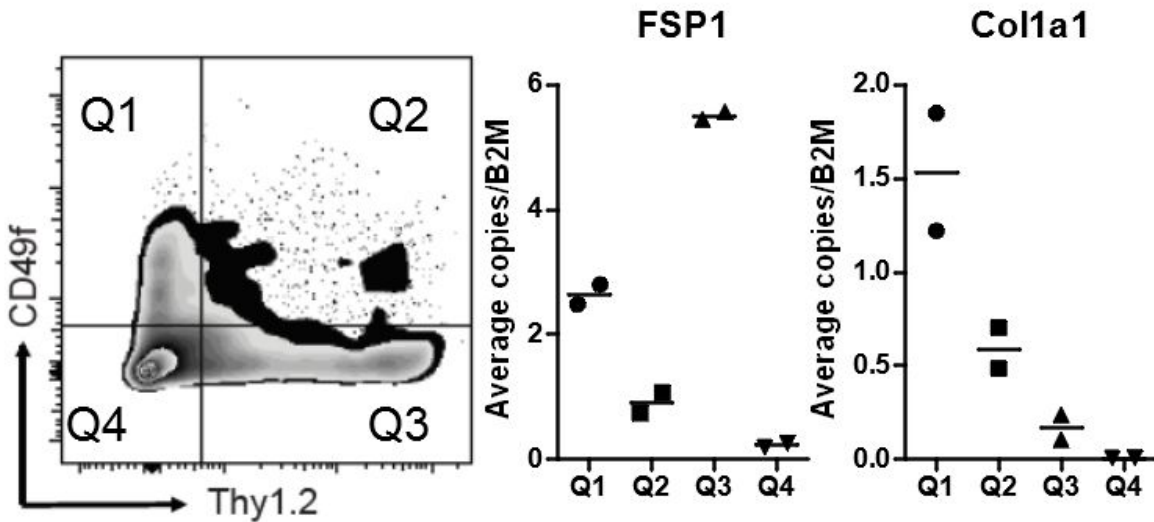


Fig. S2. Enrichment of fibroblast-specific transcripts in sorted dermal populations. Mouse dermal fibroblasts were pregated on live, single CD45-CD31- cells and were sorted into 4 populations as indicated (Q1, Q2, Q3, & Q4). Fibroblast-associated mRNA transcripts of fibroblast specific protein 1 (FSP1) and collagen 1a1 (Col1a1) were assessed by qPCR and normalized to B2M housekeeping. Q1-Q3 expressed transcripts associated with fibroblasts, whereas Q4 did not.

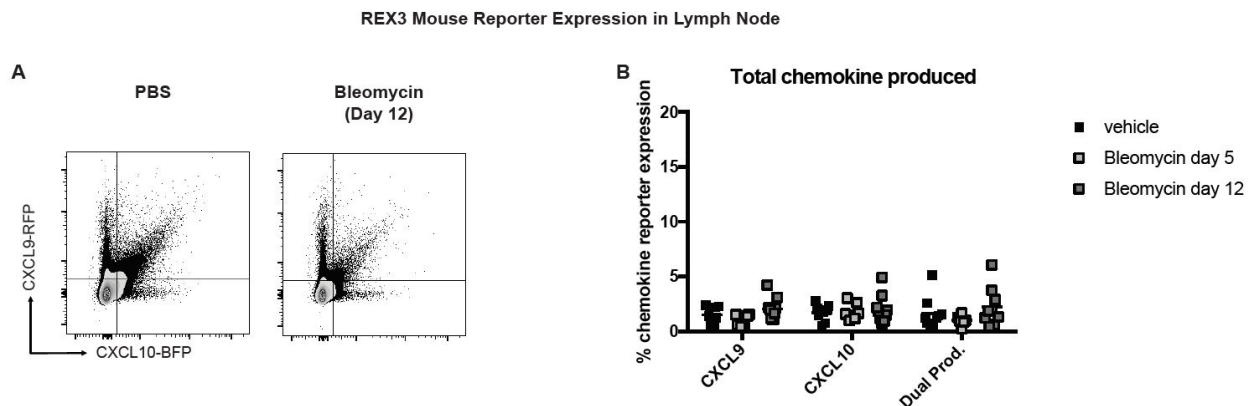


Fig. S3. Chemokine expression in the skin draining lymph nodes of REX3 mice treated with subcutaneous bleomycin. A) Sample flow plots from lymph nodes of mice. B) There

were no significant differences across any reporters and groups (n=14 vehicle, 10 day 5, and 14 day 12 mice pooled from 3-5 experiments).

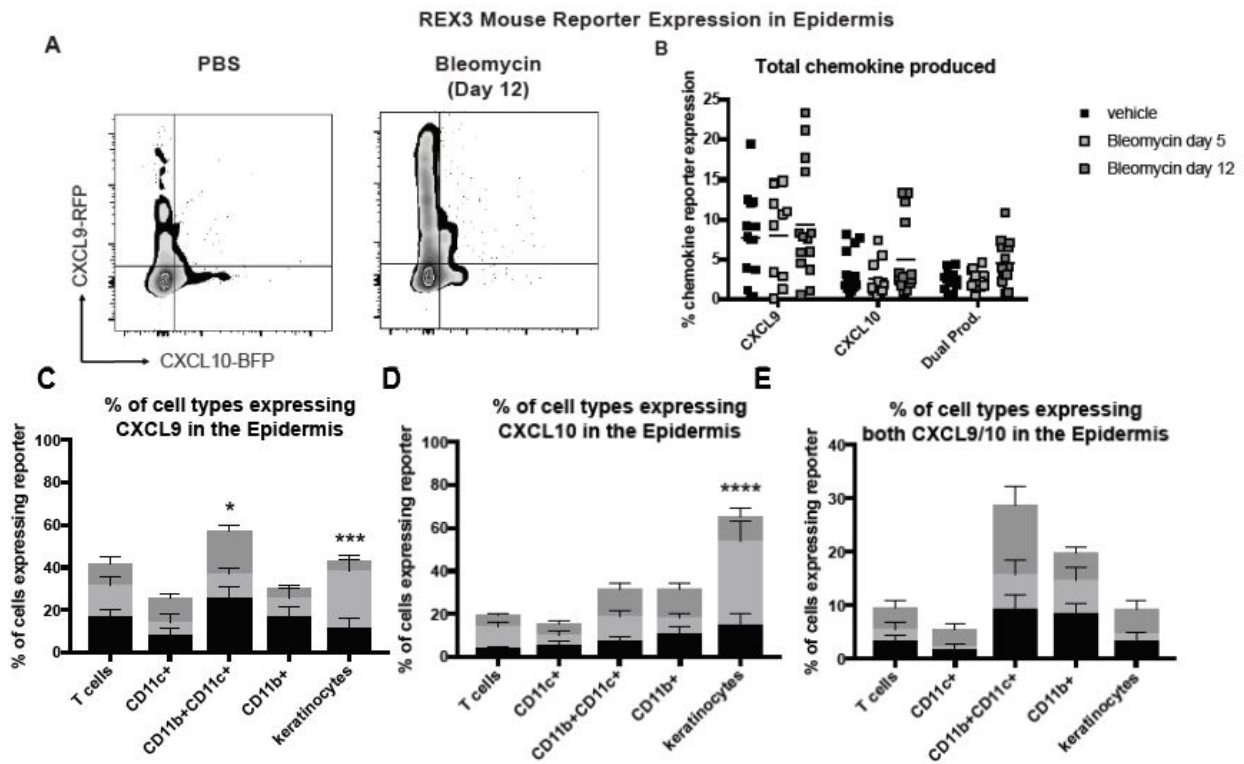


Fig. S4. Chemokine expression in the epidermis of REX3 mice treated with subcutaneous bleomycin. **(A)** Sample flow gating from the epidermis of REX3 mice. **(B)** There was no significant upregulation of total chemokine production. **(C-E)** Keratinocytes contributed the bulk of chemokine expression (two-way ANOVA $p=0.0139$ for cell type, Tukey's post tests: $*p=0.0274$ for vehicle vs day 5 and $***p=0.0007$ for day 5 vs day 12). **(F-H)** Langerhans cells and keratinocytes turned on chemokine expression, though not to a level high enough to affect total chemokine production as assessed in B (two-way ANOVA CXCL9 $p=0.0139$, Tukey's post tests: CD11b+CD11c+ $*p=0.0497$ vehicle vs. day 5, keratinocytes $*p=0.0274$ vehicle vs. day 5 and $***p=0.0007$ day 5 vs. day 12; CXCL10 $p<0.0001$, Tukey's post tests: keratinocytes $****p<0.0001$ vehicle vs. day 5 and day 5 vs. day 12; dual production $p<0.0001$, Tukey's post tests: ns; n=14 vehicle, 10 day 5, and 14 day 12 mice pooled from 3-5 experiments).

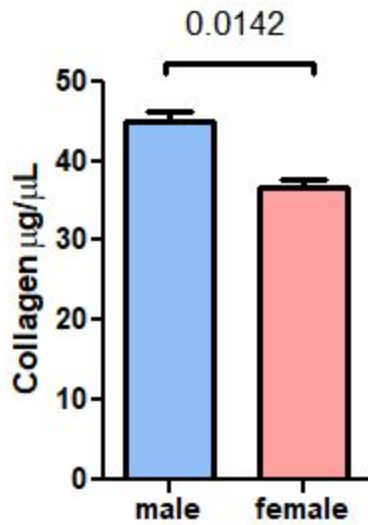


Fig. S5. Sex differences in baseline collagen production by hydroxyproline assay. Male mice have higher basal collagen content in their skin than female mice (n=3 males and 2 females; unpaired t test p=0.0142).

Table S1. Flow antibodies and clones used for this study. Please note that PE-Texas red channel was used for CXCL9-RFP expression and Pacific blue channel was used for CXCL10-BFP expression. These targets were divided into 2 separate flow panels.

Antigen target	Clone	Fluorophore	Biologend catalogue #	Panel
CD45	30-F11	AF700	103128	1 & 2
CD49f	GoH3	PerCP-Cy5.5	313618	1
CD31	390	PE-Cy7	102418	1
Thy1.2/CD90.2	53-2.1	APC	140312	1
CD11b	CBRM1/5	PerCP-Cy5.5	301418	2
CD11c	N418	PE-Cy7	117318	2

CD3	17A2	APC	100236	2
-----	------	-----	--------	---