

Host blood protein biomarkers to screen for Tuberculosis disease: a systematic review and meta-analysis

Authors:

Mary Gaeddert^{1*}, Kerstin Glaser^{1*}, Bih H. Chendi², Ayten Sultanli^{3,4}, Lisa Koeppel¹, Emily L. MacLean⁵, Tobias Broger¹, Claudia M. Denkinger^{1,6}

Affiliations:

1. Department of Infectious Diseases and Tropical Medicine, Center for Infectious Diseases, Heidelberg University Hospital, Heidelberg, Germany
2. South African Medical Research Council Centre for Tuberculosis Research; Division of Immunology, Department of Biomedical Sciences, Faculty of Medicine and Health Sciences, Stellenbosch University, Cape Town, South Africa
3. Institute of Tropical Medicine, University of Tübingen, Tübingen, Germany
4. German Center for Infection Research, Tübingen, Germany
5. NHMRC Clinical Trials Centre, Faculty of Medicine and Health, The University of Sydney, Sydney, Australia
6. German Center for Infection Research, Partner site Heidelberg, Germany

* Mary Gaeddert and Kerstin Glaser contributed equally to this work. Author order was determined in order of seniority.

Corresponding author:

Claudia.Denkinger@uni-heidelberg.de

Funding statement: This work was supported by the German Center for Infection Research (DZIF) [TTU 02.812] funding indicator 8029802812.

Abstract

Introduction: Non-sputum tests are needed to improve TB diagnosis and close the diagnostic gap. The World Health Organization target product profile (TPP) for point-of-care (POC) screening tests requires minimum sensitivity 90% and specificity 70%. Our objective was to identify host blood protein biomarkers meeting TPP criteria.

Methods: A systematic review was conducted and reported following PRISMA guidelines. Data extraction and quality assessment with QUADAS-2 were completed for included studies. Heterogeneity was assessed. For biomarkers reporting sensitivity and specificity in at least four studies, a random-effects meta-analysis was performed for biomarkers with similar cut-offs.

Results: We screened 4,651 citations and included 65 studies that enrolled 16,010 participants and evaluated 156 host proteins. Most (47/65) studies enrolled adult pulmonary TB (PTB), with 15 studies in adult extra-pulmonary TB and 5 in children. Small early-stage discovery studies with case-control design were common (24/65) and had high risk of bias. For adult PTB, CRP, IP-10, NCAM-1, and SAA met TPP criteria in high-quality studies. There was a high degree of heterogeneity in biomarker cut-offs and study design. CRP at 10mg/L cut-off was meta-analyzed from 10 studies; pooled sensitivity 86% (95% CI: 80-95) and pooled specificity 67% (95% CI: 54-79). In people living with HIV (6 studies) CRP pooled sensitivity was 93% (95% CI: 90-95) and pooled specificity 59% (95% CI: 40-78).

Discussion: We identified promising biomarkers that performed well in high-quality studies. Data overall are limited and highly heterogeneous. Further standardized validation across subgroups in prospective studies is needed before translating into POC assays.

Word count: 250/250

Introduction

Tuberculosis (TB) was the second leading cause of death by a single infectious disease worldwide in 2022 after COVID-19 (1). Even though the disease is curable, individuals must first be diagnosed before starting on treatment, and the limitations of current TB diagnostics is one factor contributing to the estimated 3 million TB cases that were missed due to underdiagnosis or underreporting in 2022 (1). With 87% of the global TB cases concentrated in only 30 high burden countries (1), many of which have limited resources, there is a need for new diagnostics that have wider reach.

Current diagnostics for TB disease are mainly sputum-based, and there are well-recognized challenges with obtaining adequate sputum samples for testing, particularly in people living with HIV (PLHIV) and children (2). Sputum-based methods are also unsuitable for the detection of extra-pulmonary TB disease (EPTB) (3). A molecular WHO-recommended rapid diagnostic (mWRD) was used as the initial test for 47% of the newly diagnosed TB cases in 2022, and the goal is to reach 100% coverage by 2027 (1). In order to close this gap and improve TB diagnostics globally, there is a need for non-sputum based rapid tests that can be used in a point of care (POC) setting where they would reach more patients earlier in the disease course.

In 2014, the World Health Organization (WHO) issued target product profiles (TPPs) to guide development of new TB diagnostics which included recommendations for a screening test (4). The goal is to develop a high-sensitivity test that can be used to rule out adults and children with presumptive TB at lower levels of the healthcare system. A positive result on the screening test would require a second test with higher specificity as confirmation. The minimum accuracy recommended by the TPP was sensitivity of 90% and specificity of 70%. The TPP also recommends operational characteristics to enable a better reach in resource-limited settings. This includes non-sputum samples that are easy to collect such as blood from a finger-stick, testing platforms that can be used at POC, and a low cost per test.

Host blood biomarkers could possibly meet these accuracy targets as suggested by results from a recent study on the Xpert MTB Host Response assay using a 3-gene signature (sensitivity 90%; specificity of 63%) (5). However, tests based on mRNA targets or other genomic signatures require complex equipment and are unlikely to meet stated cost targets (6, 7). Blood protein biomarkers and biomarker signatures are more likely to translate into affordable POC tests, such as a lateral flow assay. C-reactive protein (CRP) has been evaluated in many studies, and while it does not meet performance targets in meta-analyses, it can be measured using POC testing platforms (8, 9). The question remains whether other host blood protein biomarkers, or a combination of markers, could reach the TPP accuracy targets. Well-performing markers would also need to be measurable by POC platforms, ideally using blood from a finger-prick sample.

This systematic review focused on blood host proteins with the goal of identifying markers that meet the TPP performance criteria and could be translated to POC tests. The primary objective was to review the diagnostic accuracy of host proteins in adult pulmonary TB, and the secondary objectives were to review host proteins in adult extrapulmonary and childhood TB.

Methods

Search strategy

Studies were identified through a systematic search of the databases EMBASE, PubMed, Cochrane Controlled Trials Register, Scopus, the Web of Science, clinicaltrials.gov, and African Journals Online. The search was conducted for all studies from 1 January 2010 to 5 October 2023 with no language restrictions (Table S1). We also identified papers by reviewing the citations of included papers and relevant reviews. The systematic review protocol and search strategy are registered on PROSPERO (registration number: CRD42022298906) and followed PRISMA reporting guidelines (10). We included randomized clinical trials, cohort studies, case-control studies, and cross-sectional studies. Studies with less than 20 TB cases positive by either MRS or CRS were excluded.

Index Test

Studies using index tests able to identify proteins in blood were included. The major testing platforms are enzyme-linked immunosorbent assay (ELISA), immunoassays in general, multiplexing platforms such as Luminex and Meso Scale Discovery (MSD), and mass spectrometry. Studies that used blood samples stimulated with TB antigens were excluded as they would likely not meet operational characteristics necessary for use at POC. While antibodies are part of the proteome, we excluded antibody tests as they have shown unreliable diagnostic accuracy and WHO strongly recommended against their use in 2011 (11).

Reference standard

To be considered for inclusion, adult PTB studies must have used a microbiological reference standard (MRS) based on culture or a mWRD on any sample (12). TB cases were those who tested positive on at least one culture or mWRD and control groups were negative on all tests. Bacteriological confirmation is difficult for extra-pulmonary and childhood TB due to their paucibacillary nature and diagnosis often relies on a combination of symptoms, imaging, and microbiologic testing (3). Therefore, we included studies that used a composite reference standard (CRS) for the childhood and EPTB groups and extracted details of the CRS definition.

Study selection and data extraction

Results of the literature search were exported to EndNote and duplicates were removed. For title and abstract screening, a sample of 5% were screened by three reviewers (MG, KG, AS), discussed to reach concordance, and then each reviewer independently assessed the remaining results. Two reviewers (MG and KG) independently reviewed the full text and conducted data extraction; discrepancies were resolved by discussion between the two reviewers, or by decision of a third reviewer (CMD). Data was extracted from eligible studies using GoogleForms. Study quality was assessed only for adult pulmonary TB studies using a modified version of the Quality Assessment of Diagnostic Accuracy Studies (QUADAS-2) tool (13). QUADAS signalling questions were modified to fit the review question, and the description of questions and scoring is in Table S2. Covidence was used for full text review and QUADAS extraction.

When studies reported results from both discovery and validation cohorts, only data from the validation cohort was extracted. For studies that reported biomarker results at multiple cut-off points, we extracted the results with higher sensitivity in order to reach the TPP goal of 90% sensitivity. We reported the results of each biomarker separately from studies that reported results of multiple biomarkers.

The most clinically relevant comparison group for a screening test is other patients who present with symptoms of presumptive TB and are later diagnosed with other respiratory diseases (ORD), as they likely have an inflammatory process causing symptoms and will be the target population for routine use. A hierarchy of control groups was developed (Supplementary Methods, (14)), and if studies used multiple control groups, results from the group with the highest clinical relevance were extracted. Biomarker signatures were also extracted. Biomarker names were harmonized and abbreviations are listed in Table S3. All results were reported separately by HIV status and country of enrolment where information was available.

Statistical Analysis

When studies did not report 95% confidence intervals (CI's) for sensitivity and specificity, we calculated the CI's using the Wilson Score Interval. The Deeks test for funnel-plot asymmetry was performed to investigate publication bias for diagnostic test accuracy meta-analyses using the 'midas, pubbias' command in Stata; a p -value < 0.10 for the slope coefficient indicates significant asymmetry (15, 16). If at least four studies reported sensitivity and specificity for adult pulmonary TB, heterogeneity was assessed by visually examining forest plots and hierarchical summary receiver operating characteristic (HSROC) plots and underlying causes of heterogeneity in study design were investigated. A random-effects meta-analysis was done using the 'meta' package in Stata for biomarkers with similar cut-offs. Stata 17 (STATA Corporation, College Station, TX, USA) was used for all analyses.

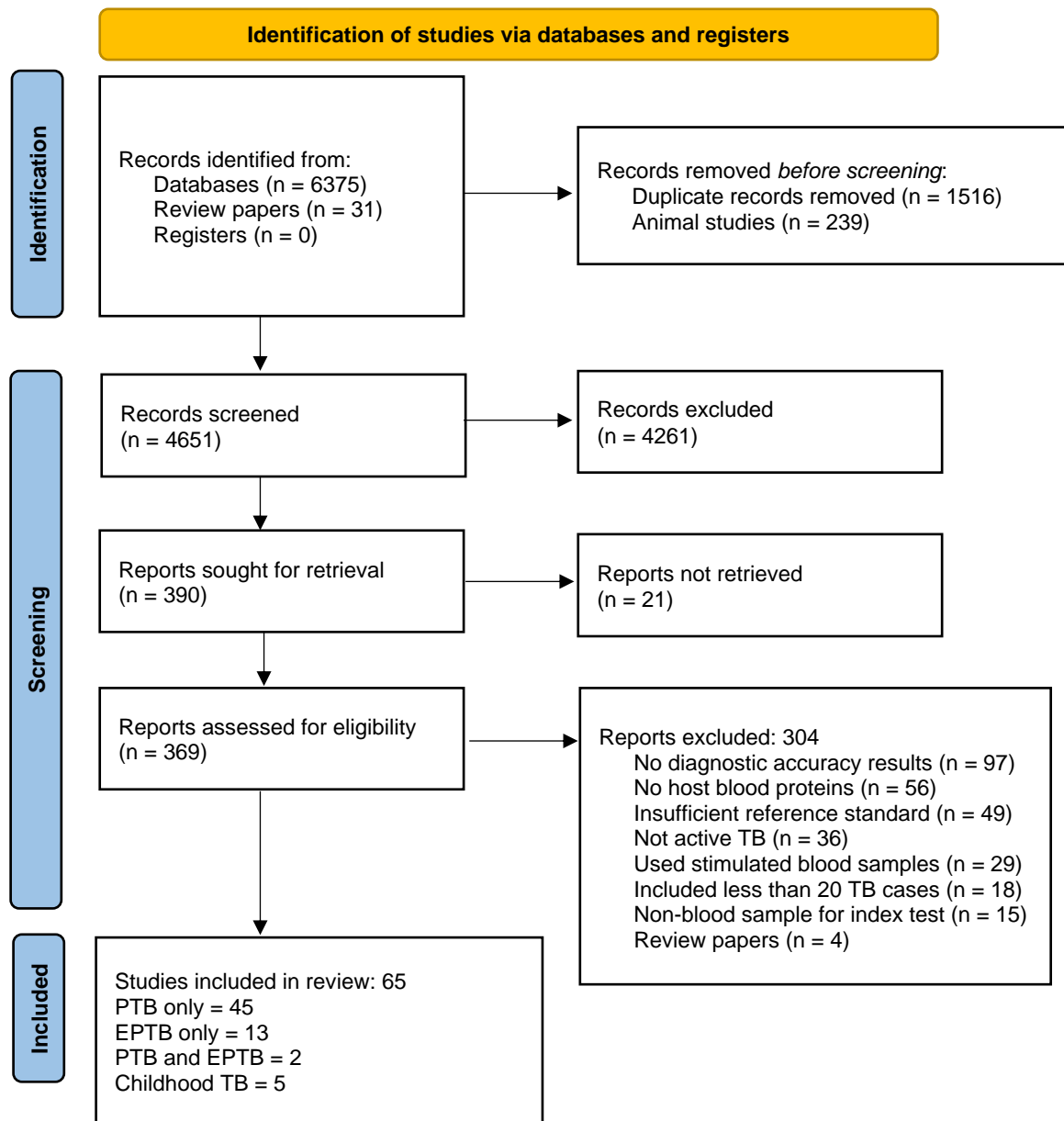
Results

Summary of studies

The literature search resulted in 4,651 articles after de-duplication. After title and abstract screening, 369 papers were eligible for full-text review. Of these, 304 were excluded, leaving 65 studies in the systematic review (Figure 1); 45 provided data for adult PTB, 13 for EPTB, 2 for both PTB and EPTB, and 5 for childhood TB. The 65 studies enrolled a total of 16,010 participants from 17 different countries across all continents except Australia. Most studies enrolled participants from the regions of Southeast Asia (26/65, 40%) and Sub-Saharan Africa (24/65, 37%), with South Africa (12/65, 18%), India (12/65, 18%), and China (11/65, 17%) being the most frequent countries.

The majority of studies used serum (41/65, 63%) and plasma (19/65, 29%) for biomarker testing, and whole blood was used in 4 studies (6%). All studies that reported sample condition used frozen blood (44/65, 69%) except 4 studies (6%) that used fresh blood. Immunoassays in general (37/65, 54%), and ELISA (27/65, 39%) specifically, were the most common index test, followed by Luminex (18/65, 26%) and Turbidimetry (6/65, 9%). Mass spectrometry, MSD, nephelometry, SomaScan, the Simoa assay, and the peroxidase method were used in one study each.

Figure 1. PRISMA flow diagram of study selection



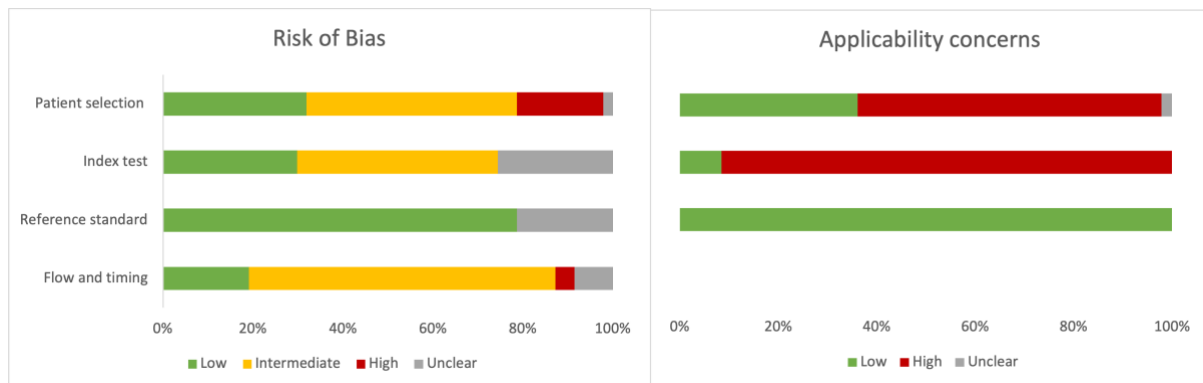
Methodological quality of studies

Many papers reviewed were early-stage discovery studies that enrolled small numbers of known TB cases and controls. Of the 47 papers that enrolled adult patients with PTB, 24 (51%) used a case-control design, resulting in a higher risk of bias in the QUADAS patient selection domain (Figure 2). The use of a healthy comparator group without TB symptoms resulted in a high concern of applicability for patient selection. Studies using healthy controls did not apply the same reference standard testing to the non-TB comparator group, increasing the risk of bias in the 'flow and timing' domain. Studies often did not report whether the index test was interpreted in blinded manner from the reference standard results, and cut-offs were often chosen based on results of each study and not pre-specified

or validated in other cohorts. In the domain concerning applicability of index test for POC use, only four studies (17-20) used a POC assay for CRP, so all other studies had a high concern for applicability. The inclusion criteria requiring an MRS resulted in an overall low risk of bias and low applicability concerns with respect to the reference standard. The detailed list of results by study for adult PTB are in Table S4.

The funnel plot of included adult PTB studies shows a high degree of symmetry and does not indicate substantial publication bias (p -value=0.62) (Figure S1).

Figure 2. Summary of QUADAS-2 assessment for risk of bias and applicability concerns



Summary of biomarkers

A total of 156 host proteins were evaluated across all included studies. The 47 adult PTB studies evaluated the diagnostic accuracy of 102 individual host blood proteins and 18 different signatures by calculating the sensitivity and specificity at a chosen cut-off value (Tables S5-S8). The majority of biomarkers (73/102, 72%) have results from only one study. The biomarker with the most evidence was CRP, reported by 19 studies. Some studies reported CRP performance separately by HIV status and cut-off, so there are 30 unique results included.

In total, 19 individual biomarkers tested by 14 separate studies met the TPP criteria of sensitivity > 90% and specificity > 70% in adult PTB. Table 1 shows the performance of each marker and the summary of study quality. Eighteen markers met TPP in HIV-negative patients: CALCOCO2 (21), CD14 (22), CRP (23), Ferritin (24), GBP1 (21), HO-1 (25, 26), IFIT3 (21), IFITM3 (21), IP-10 (18), MMP-1 (19), OPN (27), PD-L1 (21), SAA (25), SAMD9L (21), SELL (22), SNX10 (21), TIMP-2 (19), and TIMP-4 (28). All of these studies had a high overall risk of bias due to the use of LTBI or healthy control groups in the absence of patients with ORD. Furthermore, all studies choose the cut-off value which provided the highest accuracy post-hoc and did not use a pre-defined cut-off. Although these biomarkers met TPP in at least one study, there is a wide range of performance and results from other studies on the same biomarker had lower accuracy (Figure 3a).

In studies that reported results for PLHIV, only CD14 (29) met the TPP criteria for performance. This study used healthy controls and the cut-off value was chosen to reach the highest diagnostic accuracy for their cohort. In studies with a mix of HIV-positive and -

negative adults, three individual biomarkers, CRP (30), IP-10 (31), and NCAM (32) met the TPP criteria in at least two of the studies. As these studies all used patients with symptoms of presumed TB as the comparator, the risk of bias was low. Nevertheless, heterogeneity was substantial and complete results from studies that used a clinically relevant population with a low risk of bias shows that many biomarkers did not perform as well (Figure 3b).

In addition, five biomarker signatures met the TPP criteria. A combination of HO-1 and MMP-1 using participants with LTBI as the comparator group was reported separately by sites in Brazil and India (26). A three-marker signature of CALCOCO2, IFITM3, and SAMD9L tested lysed whole blood with ELISA, comparing TB cases in India to asymptomatic contacts from India and the United Kingdom (21). The four-marker signature of CLEC3B, ECM1, IP-10, and SELL used Luminex to test plasma samples from TB cases and LTBI controls in Madagascar (22). The 6-marker signature by DeGroot (SYWC, kallistatin, C9, gelsolin, testican-2, and aldolase C) was developed by testing serum samples from patients with symptoms of presumptive TB with SomaScan (33). The signature's performance was reported separately by HIV status and had an AUC>0.9 for all groups; although sensitivity is slightly below 90%, specificity is above 80%. A study of a nine-marker signature consisting of fibrinogen, α -2-M, CRP, MMP-9, TTR, CFH, IFN- γ , IP-10, and TNF- α enrolled patients with symptoms of presumptive TB from South Africa and Malawi, testing serum samples on Luminex (34).

Adult PTB studies which reported only the area under the curve (AUC) are summarized in Table S9. Of the 45 individual markers, 12 had an AUC>0.9, which is likely to meet TPP criteria if a cut-off had been defined to calculate sensitivity and specificity: C1q (35), I-309 (36), IFN- γ (37), IL-2 (37), IL-5 (37), IL-6 (37), IL-10 (37), IL-17A (37), IL-1 α (37), IP-10 (37), MIG (37), and TNF (37). All of these markers were in HIV-negative patients, and 8/12 came from one study (37) that tested both drug-susceptible and drug-resistant TB cases compared to LTBI or healthy controls. Two signatures reached an AUC of 0.9: a 2-marker combination of SYWC and I-309 in PLHIV and a 3-marker combination of I-309, SYWC, and kallistatin in a population with mixed HIV status across three countries (38).

The CRS criteria for the EPTB and childhood TB studies are listed in Table S10. Two EPTB studies (21, 36) and two childhood TB studies (39, 40) reported that all TB cases were positive on either NAAT or culture. The other studies used a combination of AFB smear or culture, and three studies (28, 41, 42) did not provide details on the reference standard.

Ten individual biomarkers met the TPP criteria for adult EPTB: Fibrinogen (43) and IFN- γ (43) in a population with mixed HIV status, and Apo-CII (36), CFHR5 (36), IFIT3 (21), IFITM3 (21), IFN- γ (44), MMP-13 (28), PD-L1 (21), and SAMD9L (21) in HIV-negative patients (Figure 3c, full results in Table S11). Two signatures met the TPP criteria for EPTB: a five-marker signature consisting of CRP, NCAM, Ferritin, IL-8 and GDF-15 in population with mixed HIV-status (43) and a 2-marker signature of CFHR2 and CFHR3 in HIV-negative participants (36). There were no studies in the review that enrolled only PLHIV with EPTB.

A study by Garland et al. tested a range of markers in both PTB and EPTB patients; IFIT3, IFITM3, PD-L1, and SAMD9L, met the TPP criteria in both groups (21). Importantly, the EPTB group was defined using an MRS. Also, IFN- γ performed well in two EPTB studies with HIV-negative participants that used a CRS (43, 44) and one study by Sampath, et al. with both

drug-resistant and drug-susceptible HIV-negative PTB cases (37). While the Sampath study did not report sensitivity and specificity, the AUC for IFN- γ was 0.95 in drug-susceptible and 0.94 in drug-resistant cases.

Five childhood TB studies evaluated a total of 70 host blood proteins (Figure 3d, full results in Table S12). Four studies enrolled HIV-negative children and one study enrolled children with mixed HIV status. Two biomarkers met TPP criteria in the study using a MRS: IL-17A (40) and TNF (40). This study compared TB to ORD and enrolled a separate validation cohort to reduce the risk of bias. The remaining biomarkers meeting TPP were compared to a CRS: CRP in a study that enrolled children with both PTB and EPTB (45), and CXCL-1, I-309, and IP-10 in a study with PTB (46). Two signatures met TPP for childhood TB, a two-marker combination of I 309 and CXCL-1 (46) in children diagnosed with a CRS and a three-marker signature of TNF, IL-2, and IL-17A (40) using a MRS. All markers that met TPP in children also performed well in adult studies, except CXCL1. CRP and IP-10 met TPP criteria in both groups, and I-309, IL-17A, and TNF performed well in adult studies that reported only AUC.

Meta-analysis

Heterogeneity was assessed for biomarkers that reported sensitivity and specificity in at least four studies for adult pulmonary TB (CRP, HO-1, IFN- γ , IL-6, IP-10, MIG, TNF, and VEGF). Due to the high level of heterogeneity for clear reasons like study-design, population included, index test, sample type, and cut-off value, but also for additional reasons (as visualized in forest plots and HSROC curves) a meta-analysis was only possible for CRP.

The results of CRP at a cut-off of 10mg/L were meta-analyzed from 10 studies (Figure 4a). The pooled sensitivity was 86% (95% CI: 80-95) and the pooled specificity with 67% (95% CI: 54-79) (Figure 4a). Visually assessing the forest plots and HSROC curves indicates the heterogeneity in CRP results was moderate for the sensitivity but high for specificity. The results of CRP in only PLHIV at a cut-off of 10mg/L were meta-analyzed from 6 studies (Figure 4b). The pooled sensitivity was 93% (95% CI: 90-95) and the pooled specificity was 59% (95% CI: 40-78). One study by Ciccacci, et al. from Mozambique that tested frozen plasma samples on ELISA was an outlier, reporting lower sensitivity but higher specificity than the others (47). This study enrolled PLHIV being screened for TB before starting antiretroviral therapy (ART).

Table 1. Summary of adult PTB biomarkers and signatures that meet the TPP criteria

Legend: 2-marker signatures: HO-1, MMP-1; 3-marker signature: CALCOCO2, IFITM3, SAMD9L; 4-marker signature: CLEC3B, ECM1, IP-10, SELL; 6-marker signature: SYWC, kallistatin, C9, gelsolin, testican-2, aldolase C; 9-marker signature: Fibrinogen, α -2-M, CRP, MMP-9, TTR, CFH, IFN- γ , IP-10, TNF. The Reference Standard results for Risk of Bias and Applicability were low for all studies.

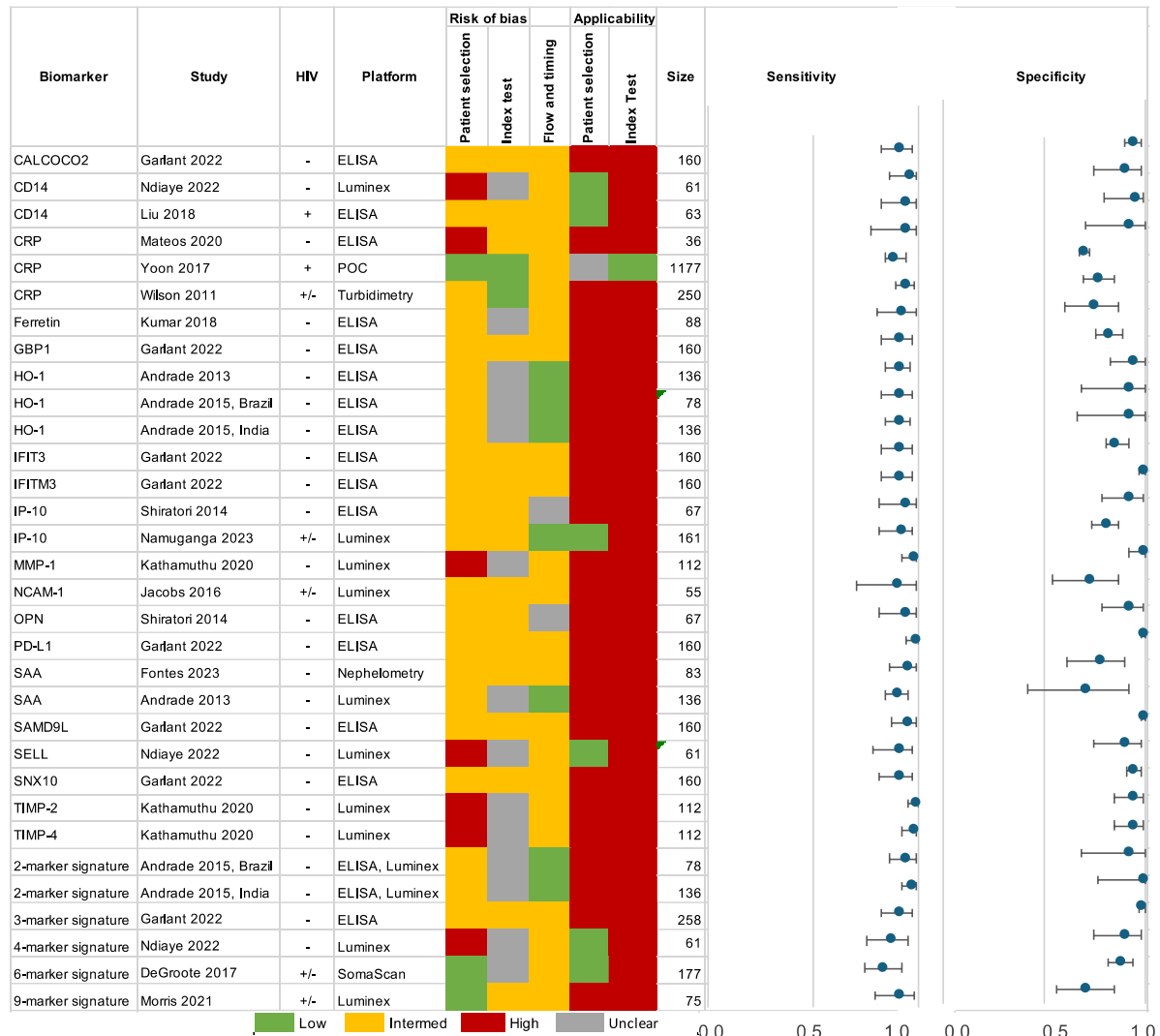


Figure 3. Summary plots

3a. Complete results of adult PTB biomarkers that met the TPP criteria in two or more studies

3b. Complete results of adult PTB biomarkers tested in two or more studies with limited bias

Figure 3c. Complete results of adult Extrapulmonary TB biomarkers that met the TPP criteria in one or more studies

Figure 3d. Complete results of childhood TB biomarkers that met the TPP criteria in one or more studies

Legend: symbol colors represent different biomarkers and the size of the markers is proportional to sample size.

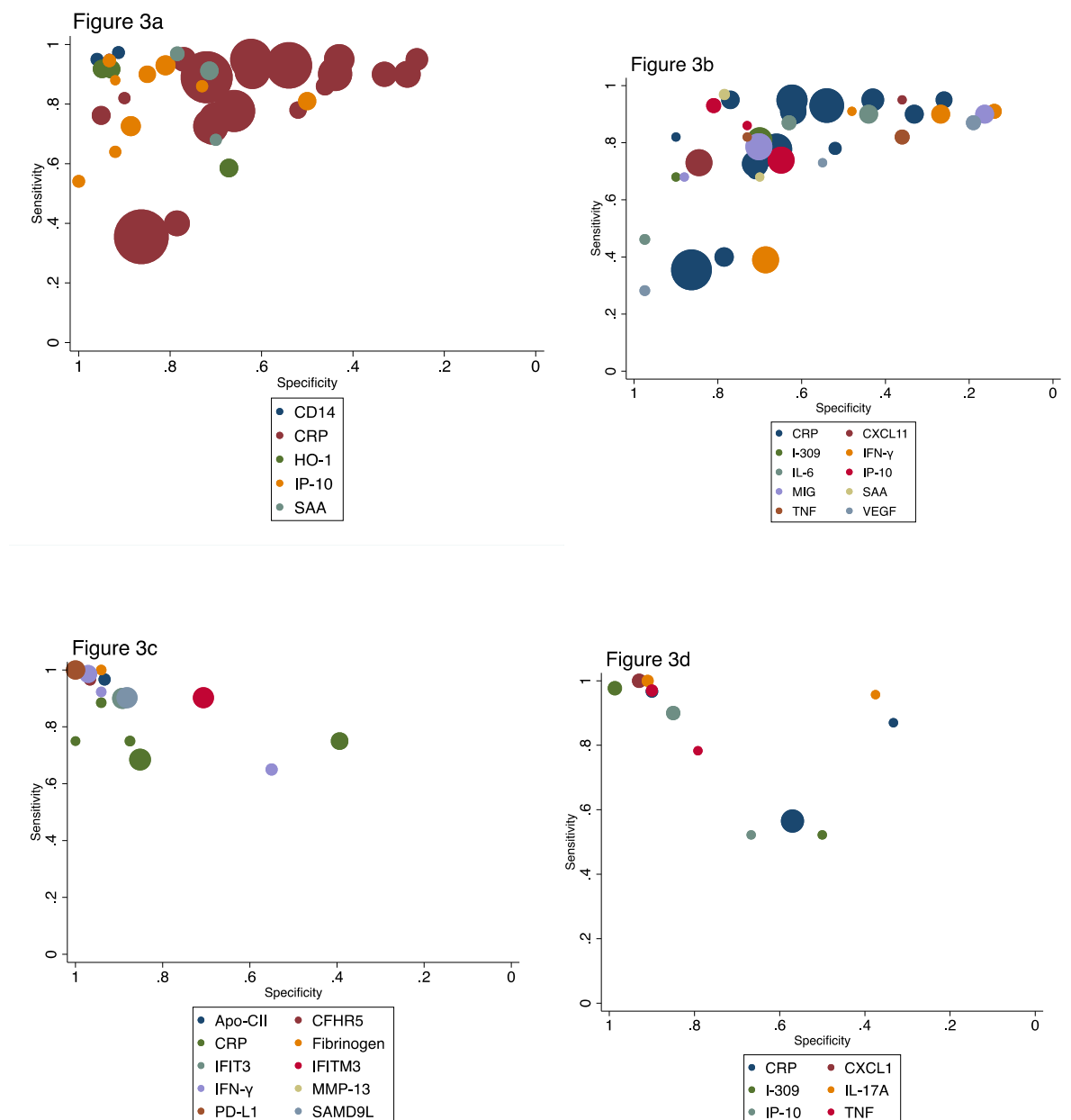


Figure 4. Results of CRP meta-analysis at 10mg/L cut-off

Figure 4a. Meta-analysis of CRP from adult pulmonary TB studies, forest plot and HSROC plot

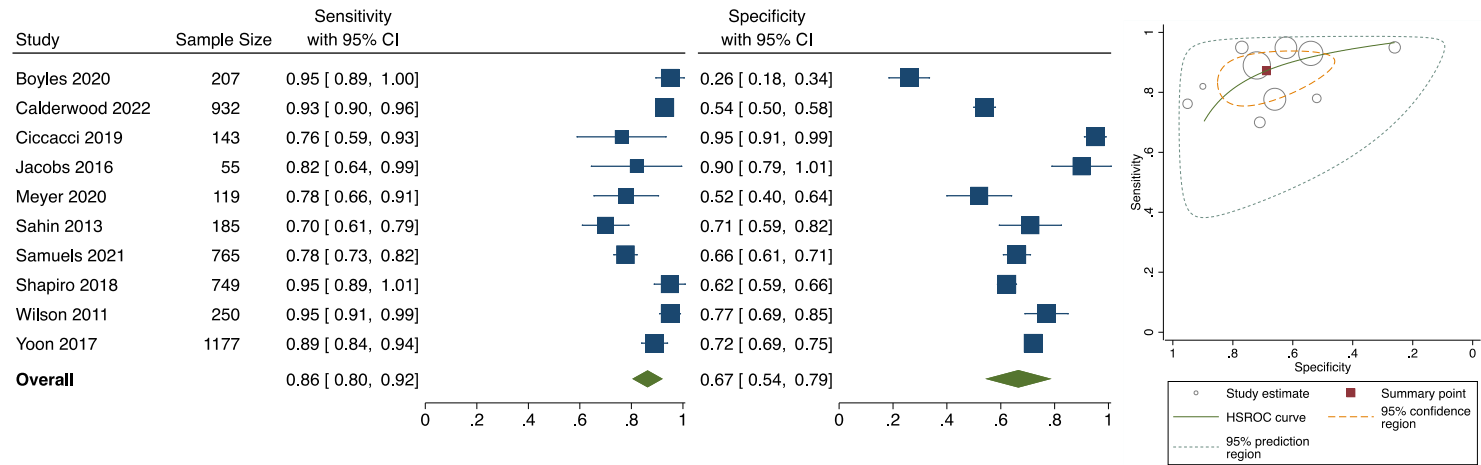
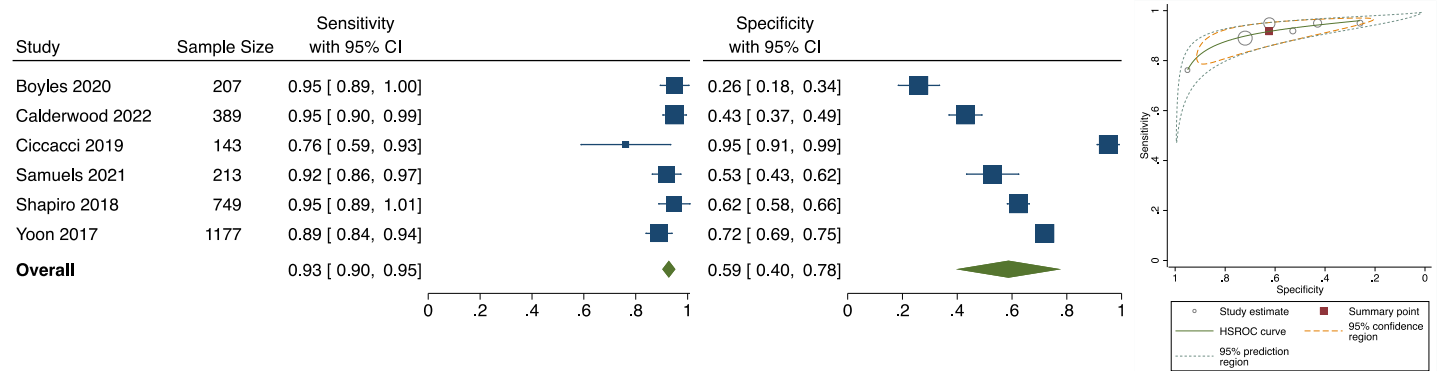


Figure 4b. Meta-analysis of CRP from adult pulmonary TB studies of PLHIV, forest plot and HSROC plot



Discussion

This is the first systematic review to comprehensively look at host blood protein biomarkers for TB disease that could translate into POC assays. A number of individual biomarkers and biomarker signatures met the TPP performance criteria for a screening test and are promising. However, most markers were evaluated by only one study each in small study populations that were likely selected in a biased manner, and require further validation. For biomarkers that were evaluated in multiple studies, the heterogeneity in study designs and biomarker cut-offs make it difficult to draw broad conclusions.

When considering the risk of bias, the most promising individual host proteins for adult PTB are CRP (30), IP-10 (31), NCAM-1 (32), and SAA (48). These markers not only met TPP criteria but were evaluated in clinically relevant populations of patients with presumptive TB symptoms. Many other studies were early-stage discovery studies that used participants with LTBI or healthy controls, which likely overestimated biomarker performance (49).

Also, many studies excluded PLHIV, limiting the applicability of findings to this group. CD14 was the best performing marker out of the limited number tested in PLHIV (29), and also performed well in HIV-negative participants (22). In studies evaluating participants with ORD that enrolled a population of mixed HIV status, CRP (32) and IP-10 (31) had high accuracy.

CRP was the most-studied marker and our results support the findings of previous reviews that have shown it not to perform well enough as a single marker (8, 9, 50). While WHO recommends a CRP cut-off of 5 mg/L for PLHIV (51) our review did not have a sufficient number of results at this cut-off to perform a meta-analysis.

CRP was also the only biomarker with enough previous research to establish pre-defined cut-offs. Many other biomarkers have not been evaluated before, and studies were done for the purpose of discovery and the cut-off thus defined post-hoc to optimize performance. As the body of evidence for biomarkers is growing, it will be important to develop consensus cut-offs and conduct validation studies with fixed, pre-defined cut-offs. This will enable results to be compared across studies and perform meta-analyses in the future.

As the performance of individual markers often do not meet TPP requirements in clinically relevant populations, combinations of markers will likely be necessary. One of the best performing combinations in patients with symptoms of presumptive TB was the 6-marker signature by De Groote, et al. (33). Building off of this study, a recent analysis using machine-learning methods identified a 3-marker signature of I-309, SYWC, and kallistatin with an AUC of 0.90 (38). The other signatures that met TPP in studies with a low risk of bias for patient selection was a 4-marker combination with an AUC of 0.93 (22) and a 9-marker combination with an AUC of 0.84 (34). These results may indicate a plateau in performance around AUC 0.90, wherein adding additional biomarkers to a signature may not increase the diagnostic accuracy any further.

Ideally, the same markers would perform well across multiple populations, such as PTB and EPTB and between adults and children. However, our review did not identify many overlapping markers between patient groups. Possible reasons for this could be differences

in the studies themselves (e.g. different reference standard) (52) but also in the host response to TB disease, particularly in children (53).

The best sample for blood-based POC tests would be fresh capillary (finger-prick) blood because it is easy to collect and does not require processing. However, most studies used frozen plasma or serum samples. While this is the most feasible way to do discovery and early validation studies, there are differences when a capillary sample is used (54, 55) and further validation studies on the relevant clinical sample will be needed.

The most commonly used platforms for protein measurement in this review were ELISA and Luminex, which differ in their limits of detection and quantification. While data generated on ELISA can be conceivably translated into a lateral-flow assay, the translation from a multiplexing platform such as Luminex is more difficult as it has superior sensitivity and a broader dynamic range than ELISA (56). Studies that used a POC CRP assay reported lower sensitivity on average than studies using other methods such as ELISA and Luminex, although heterogeneity in study designs makes it difficult to compare results between platforms directly. Of the biomarkers that met TPP in adult PTB, studies used a POC test (18), turbidimetry (30), and nephelometry (48) indicating that less sensitive assays can still achieve high diagnostic accuracy.

Multiplex lateral-flow assays (LFA) are a possible solution to achieve the TPP objective for a screening test; this would enable testing a combination of biomarkers on low-cost POC platform. Multiplex LFAs are not yet common and typically restricted to three markers with similar concentration ranges and LFAs have limited ability for quantification (57). However, advancements have been made in developing LFAs for cardiac biomarkers, including an up-converting phosphor technology-based lateral flow (UPT-LF) assay for diagnosis of acute heart failure as a POC test (58, 59). There is a study currently evaluating a 3-host protein marker lateral flow assay as a screening test for TB (60).

Strengths

Our review conducted a comprehensive literature search and included studies conducted in 17 countries. Study quality was assessed using the standard QUADAS-2 tool, and the inclusion criteria requiring an MRS for adult PTB reduced the risk of bias for misclassifying the TB group.

Limitations

Most biomarkers were investigated in one study each, limiting the meta-analysis to CRP. For studies that reported results at multiple cut-off values, the a-priori decision to extract the results with higher sensitivity resulted in a bias towards including the results with higher sensitivity and lower specificity. Despite our comprehensive literature search, there is a possibility that some papers could have been missed.

Recommendations for future research

As there are few individual host proteins that meet the TPP requirements in high quality studies, further work should be done validating these markers and new combinations of markers in populations that reflect the intended use-case. Validation studies should be conducted using fresh blood samples on POC assays, and standardized, ideally pre-defined

cut-off values should be used whenever possible. There is especially a need for more biomarker studies in children and PLHIV, both with PTB and EPTB disease.

Conclusion

The large number of host blood protein biomarkers studied indicates a strong interest in this area of research, and some biomarkers have promising performance under controlled research conditions. However, further advancements are needed in testing on POC platforms as well as prospective validation studies using clinically relevant populations and sample types.

Supplemental Materials

Table S1: Search strategy

#1	P: TB	"Mycobacterium tuberculosis"[MeSH] OR "Tuberculosis"[MeSH] OR Tuberculo*[tiab] OR TB[tiab]
#2	I: protein, cytokine	"Cytokines/blood"[MeSH] OR "Blood Proteins"[MeSH] OR "Biomarkers/blood"[MeSH] OR proteom*[tiab] OR cytokin*[tiab] OR CRP[tiab] OR "C-reactive protein"[tiab] OR "IP-10"[tiab]
#3	I: blood	blood[tw] OR plasma[tw] OR serum[tw]
#4	O: diagnosis	"diagnosis"[MeSH] OR "Sensitivity and Specificity"[MeSH] OR diagnos*[tiab] OR detect*[tiab] OR discriminat*[tiab]
#5	Date	"2010/01/01"[PDat "2023/10/05"[PDat]
#6		(#1) AND (#2) AND (#3) AND (#4) AND (#5)

Table S2: Modified QUADAS-2 template

Domain Signaling Question		Accepted values and Answers
Domain 1: Patient selection		
1.) Was a case-control design avoided?		Cohort → yes Cross-sectional → yes Case-control → no NR → unclear
2.) Was a consecutive or random sample of patients enrolled?		Random → yes Consecutive → yes Convenience → no NR → unclear
3.) Did the study avoid inappropriate exclusions? <i>Example exclude co-infections, cancer, pregnancy other 'difficult to diagnose' patients.</i>		Yes → yes No → no NR → unclear
Scoring	Yes on ≥2 questions → Low No on 1 question irrespective of others → Intermediate No on ≥2 questions → High Unclear on ≥2 questions → Unclear	
Applicability	Did the included patients match the review question? <i>Did the entire study population (cases and comparators) have symptoms of presumed TB (pulmonary and/or extra-pulmonary)?</i>	Low High Unclear
Domain 2: Index Test		
1.) Was the index test interpreted in a blinded manner, without knowledge of the reference standard results?		Yes → yes No → no NR → unclear
2.) If a cut-off was used, was it pre-specified or validated with another cohort?		Yes → yes No → no NR → unclear

Scoring	Yes on both questions → Low Yes on 2. Irrespective of answer to 1. → Low No on 2. And Yes on 1. → Intermediate No on both questions → High 1 Yes + 1 Unclear <i>or</i> Unclear on both questions → Unclear	
Applicability	Are there concerns that the index test, its conduct, or its interpretation differ from the review question? <i>Was a POC test used?</i>	Low High Unclear
Domain 3: Reference Standard		
1.) Is the reference standard likely to correctly classify the target condition?	Culture/Xpert → yes In house-PCR → unclear	
2.) Were the reference standard results interpreted without knowledge of the results of the index test?	Yes → yes No → no NR → unclear	
Scoring	Yes on both questions → Low Yes on 1. And No on 2. → Intermediate Unclear on 1. And no on 2. → High 1 Yes + 1 Unclear <i>or</i> Unclear on both questions → Unclear	
Applicability	Are there concerns that the target condition as defined by the reference standard does not match the review question?	Low High Unclear
Domain 4: Flow and Timing		
c.) Was there an appropriate interval between index tests and reference standard? <i>Was the blood for the index test drawn before or within the two days of the start of TB treatment?</i>	Yes → yes No → no NR → unclear	
2.) Did entire study population (cases and comparator groups) have the same reference standard testing?	Yes → yes No → no NR → unclear	
3.) Were all patients included in the analysis?	Yes → yes No → no NR → unclear	
Scoring	Yes on ≥2 questions → Low No on 1 question irrespective of others → Intermediate No on ≥2 questions → High Unclear on ≥2 questions → Unclear	

Supplementary Methods: Hierarchy of control groups extracted

Use case as a screening test, best control is group is patients presenting with symptoms but diagnosed with other respiratory diseases (ORD). We preferentially extracted data for the negative control group with the highest clinical relevance in the following order:

- 1) Patients suspected of TB but diagnosed with ORD (or other EP disease)
- 2) Patients enrolled with known ORD
- 3) Patients enrolled with other diseases, including cancer for EPTB studies
- 4) Patients with latent TB infection (LTBI)
- 5) Asymptomatic individuals with known TB contact (e.g. household contacts)
- 6) Health individuals from endemic countries (e.g. blood donors)

7) Healthy individuals from non-endemic countries (e.g. Norway healthy controls)

Table S3: Biomarker abbreviations

Abbreviation	Name
α 1AGP1	α 1-acid glycoprotein
α -2-M	alpha-2-macroglobulin
A1At	Alpha-1 antitrypsin (α 1AT); Serpin Peptidase Inhibitor Clade A Member 1 (SERPINA1)
A β 40	Amyloid β 40
A β 42	Amyloid β 42
ADA	Adenosine deaminase
ADAMTS-13	a disintegrin and metalloproteinase with a thrombospondin type 1 motif, member 13
Apo-AI	Apolipoprotein A1
Apo-CI	Apolipoprotein C1
Apo-CII	Apolipoprotein C-II
Apo-CIII	Apolipoprotein C3
Apo-E	Apolipoprotein E
-	Apotransferrin
AT-III	Antithrombin III
BDNF	Brain-derived neurotrophic factor
bFGF	Basic fibroblast growth factor
C1q	Complement component 1q
C2	Complement component 2
C3	Complement component 3
C4	Complement component 4
C4b	Complement component 4b
C5	Complement component 5
C5a	Complement component 5a
C9	Complement component 9
C1-INH	C1-inhibitor
CA-125	Cancer antigen 125
CALCOCO2	Calcium-binding and coiled-coil domain-containing protein 2
CAMP	Cathelicidin antimicrobial peptide ; LL-37
CCL14	C-C motif ligand 14; HCC-1
CD14	Cluster of differentiation 14
CD-163	Cluster of differentiation 163
CD40L	CD40 ligand; Cluster of Differentiation 154 (CD154)
CD52	Cluster of differentiation 52; CAMPATH-1 antigen
CEA	Carcinoembryonic antigen
CFD	Complement factor D; Adipsin
CFH	Complement factor H
CFHR2	Complement factor H-related protein 2
CFHR3	Complement factor H-related protein 3
CFHR5	Complement factor H-related protein 5

CFI	Complement factor I
CK-MB	Creatine kinase myocardial band
CLEC3B	C-Type Lectin Domain Family 3 Member B; Tetranectin
CRP	C-reactive protein
CXCL1	chemokine ligand 1; Growth-related oncogene (GRO1); Growth-regulated alpha protein
CXCL2	Chemokine ligand 2; growth-regulated oncogene (GRO2); growth-regulated protein beta
CXCL11	C-X-C motif chemokine ligand 11; I-TAC
CXCL13	Chemokine ligand 13; B lymphocyte chemoattractant (BLC); B cell-attracting chemokine 1 (BCA-1)
-	D-dimer
ECM1	Extracellular matrix protein 1
Eotaxin	Eosinophil chemotactic protein; C-C motif chemokine 11 (CCL11)
FAS	Fas cell surface death receptor; tumor necrosis factor receptor superfamily member 6 (TNFRSF6)
-	Ferretin
-	Fibrinogen
Gal-9	Galectin-9
G-CSF	Granulocyte colony-stimulating factor; colony-stimulating factor 3 (CSF 3)
GBP1	Interferon-induced guanylate-binding protein 1
GDF-15	Growth/differentiation factor 15
GDNF	Glial cell line-derived neurotrophic factor
GM-CSF	Granulocyte-macrophage colony-stimulating factor; colony-stimulating factor 2 (CSF2)
HEPC	Hepcidin
HO-1	Heme oxygenase 1
HP	Haptoglobin
HPX	Hemopexin
I-309	Small inducible cytokine A1; Chemokine ligand 1 (CCL1)
ICAM-1	Intercellular Adhesion Molecule 1; Cluster of Differentiation 54 (CD54)
IFIT3	Interferon-induced protein with tetratricopeptide repeats 3
IFITM3	Interferon-induced transmembrane protein 3
IFN- α -2	Interferon alpha-2
IFN- γ	Interferon- γ
IGFBP-3	Insulin-like growth factor-binding protein 3
IL-1 α	Interleukin-1 alpha
IL-1 β	Interleukin-1 beta
IL-1Ra	Interleukin-1 receptor antagonist
IL-2	Interleukin-2
IL-2R	Interleukin-2 receptor
IL-4	Interleukin-4
IL-5	Interleukin-5

IL-6	Interleukin-6
IL-7	Interleukin-7
IL-8	Interleukin-8; CXCL8
IL-9	Interleukin-9
IL-10	Interleukin-10
IL-12	Interleukin-12
IL-12p40	Interleukin-12 subunit beta; Interleukin-12p40
IL-12p70	Interleukin-12 subunit p70
IL-13	Interleukin-13
IL-17A	Interleukin-17A
IL-18	Interleukin-18
IL-21	Interleukin-21
IL-33	Interleukin-33
IP-10	Interferon gamma-induced protein; CXCL10
ITIH2	Inter-alpha-trypsin inhibitor heavy chain H2
-	Kallistatin
KLKB1	Kallikrein B1
KNG1	Kininogen-1
LBP	Lipopolysaccharide-binding protein
-	
LL-37	Cathelicidin LL-37
LTA	Lymphotoxin-alpha; Tumor necrosis factor β (TNF- β)
MBL	Mannose binding lectin
MCP-1	Monocyte Chemoattractant Protein-1; Chemokine C-C Motif Ligand 2 (CCL-2)
MDC	Macrophage-derived chemokine; C-C Motif Chemokine 22 (CCL-22)
MICA	MHC class I polypeptide-related sequence A
MIG	Monokine induced by gamma interferon; Chemokine C-X-C Motif Ligand 9 (CXCL-9)
MIP-1 α	Macrophage Inflammatory Protein 1 Alpha; Chemokine (C-C Motif) Ligand 3 (CCL3)
MIP-1 β	Macrophage inflammatory protein 1-Beta; Chemokine (C-C Motif) Ligand 4 (CCL4)
MIP-4	Macrophage inflammatory protein 4; Chemokine (C-C Motif) Ligand 18 (CCL18)
MMP-1	Matrix metalloproteinase 1
MMP-2	Matrix metalloproteinase 2
MMP-3	Matrix metalloproteinase 3
MMP-7	Matrix metalloproteinase 7
MMP-8	Matrix metalloproteinase 8
MMP-9	Matrix metalloproteinase 9
MMP-12	Matrix metalloproteinase 12
MMP-13	Matrix metalloproteinase 13
MPO	Myeloperoxidase
MYBPC1	Myosin binding protein C, slow type

-	Myoglobin
NCAM-1	Neural cell adhesion molecule 1; CD56 Antigen
NGAL	Neutrophil gelatinase-associated lipocalin; Lipocalin-2
OPG	Osteoprotegerin; Tumor necrosis factor receptor superfamily member 11B (TR11B)
OPN	Osteopontin; Secreted Phosphoprotein 1 (SPP1)
PAI-1	Plasminogen activator inhibitor-1; Serpin E1
PCT	Procalcitonin
PD-L1	Programmed death-ligand 1; cluster of differentiation 274 (CD274); B7 homolog 1 (B7-H1)
PDGF-AA	Platelet-derived growth factor AA
PDGF-AB/BB	Platelet-derived growth factor AB/BB
PDGF-BB	Platelet-derived growth factor BB
PEDF	Pigment epithelium-derived factor
Pla2G2A	Phospholipase A2 group IIA
-	P-selectin
RAGE	Advanced glycosylation end product-specific receptor
RANTES	regulated on activation, normal T cell expressed and secreted; CCL5
S100A9	S100 calcium binding protein A9
S100B	S100 calcium binding protein B
SAA	Serum amyloid A
SAA-4	Serum amyloid A-4 protein
SAMD9L	Sterile Alpha Motif Domain-Containing 9-Like Protein
SAP	Serum amyloid P component
SELL	Selectin L
SNX10	Sorting nexin-10
SOD3	Superoxide dismutase 3
SYWC	Tryptophan-tRNA ligase
TfR	Transferrin receptor
TGF- α	Transforming growth factor alpha
TIMP-1	Tissue inhibitor of metalloproteinases 1
TIMP-2	Tissue inhibitor of metalloproteinases 2
TIMP-3	Tissue inhibitor of metalloproteinases 3
TIMP-4	Tissue inhibitor of metalloproteinases 4
TMEM49	Transmembrane Protein 49; Vacuole membrane protein 1 (VMP1)
TNF	Tumor necrosis factor-alpha
TPA	Tissue plasminogen activator
-	Transferrin; Serotransferrin
TTR	Transthyretin
VCAM-1	Vascular cell adhesion molecule 1
VEGF	Vascular endothelial growth factor (A)

Table S4: QUADAS-2 detailed results by paper, adult pulmonary TB

Study ID	Risk of bias				Applicability Concerns		
	Patient selection	Index Test	Reference standard	Flow and Timing	Patient selection	Index Test	Reference standard
Ahmad, R; 2019 (61)	Yellow	Green	Green	Yellow	Red	Red	Green
Andrade, B; 2013 (25)	Yellow	Grey	Green	Green	Red	Red	Green
Andrade, B; 2015 (26)	Yellow	Grey	Green	Green	Red	Red	Green
Boyles, T; 2020 (62)	Green	Green	Grey	Yellow	Red	Green	Green
Calderwood, C; 2023 (63)	Green	Green	Green	Yellow	Red	Red	Green
Chen, T; 2015 (64)	Red	Yellow	Green	Yellow	Green	Red	Green
Ciccacci, F; 2019 (47)	Green	Green	Green	Green	Green	Red	Green
De Groote, M; 2017 (33)	Green	Grey	Green	Yellow	Green	Red	Green
Du, Z; 2017 (65)	Yellow	Yellow	Green	Green	Green	Red	Green
Essone, P; 2022 (66)	Green	Yellow	Green	Grey	Red	Red	Green
Estevez, O; 2020 (67)	Red	Yellow	Green	Yellow	Red	Red	Green
Farr, K; 2018 (68)	Green	Yellow	Green	Yellow	Green	Red	Green
Fontes, C; 2023 (48)	Yellow	Yellow	Grey	Yellow	Red	Red	Green
Garlant, H; 2022 (21)	Yellow	Yellow	Green	Yellow	Red	Red	Green
Halliday, A; 2021 (69)	Green	Yellow	Grey	Yellow	Red	Red	Green
Jacobs, R; 2016 (32)	Yellow	Yellow	Green	Yellow	Red	Red	Green
Jiang, X; 2012 (70)	Yellow	Grey	Grey	Grey	Red	Red	Green
Kathamuthu, G; 2020 (28)	Red	Grey	Green	Yellow	Red	Red	Green
Koepfel, L; 2023 (38)	Yellow	Green	Green	Green	Red	Red	Green
Kumar, N; 2018 (24)	Yellow	Grey	Green	Yellow	Red	Red	Green
Kumar, N; 2019	Red	Grey	Green	Yellow	Green	Red	Green
Lawn, S; 2013 (71)	Green	Green	Green	Green	Red	Red	Green
Lee, K; 2015 (72)	Green	Yellow	Green	Red	Red	Red	Green
Liu, Y; 2018 (29)	Yellow	Yellow	Grey	Yellow	Green	Red	Green
Lubbers, R; 2018 (73)	Yellow	Yellow	Green	Yellow	Green	Red	Green
Lubbers, R; 2020 (74)	Yellow	Grey	Green	Red	Green	Red	Green
Luo, Y; 2020 (75)	Yellow	Green	Green	Yellow	Green	Red	Green
Mateos, J; 2020 (23)	Red	Yellow	Green	Yellow	Red	Red	Green

Meyer, A; 2020 (76)	■	■	■	■	■	■	■
Mikačić, M; 2017 (77)	■	■	■	■	■	■	■
Moreira, F; 2021 (78)	■	■	■	■	■	■	■
Morris, T; 2021 (34)	■	■	■	■	■	■	■
Namuganga, A; 2017 (79)	■	■	■	■	■	■	■
Namuganga, A; 2023 (31)	■	■	■	■	■	■	■
Ndiaye, M; 2022 (22)	■	■	■	■	■	■	■
Peruhype-Magalhaes, V; 2023 (80)	■	■	■	■	■	■	■
Ruperez, M; 2023 (81)	■	■	■	■	■	■	■
Sahin, F; 2013 (17)	■	■	■	■	■	■	■
Sampath, P; 2023a (37)	■	■	■	■	■	■	■
Sampath, P; 2023b (82)	■	■	■	■	■	■	■
Samuels, T; 2021 (83)	■	■	■	■	■	■	■
Shapiro, A; 2018 (84)	■	■	■	■	■	■	■
Shiratori, B; 2014 (27)	■	■	■	■	■	■	■
Uwimaana, E; 2021 (85)	■	■	■	■	■	■	■
Wilson, D; 2011 (30)	■	■	■	■	■	■	■
Yang, Q; 2014 (86)	■	■	■	■	■	■	■
Yoon, C; 2017 (18)	■	■	■	■	■	■	■
Legend: ■ Low ■ Intermediate ■ High ■ Unclear							

Figure S1. Funnel plot for publication bias, all adult pulmonary TB studies

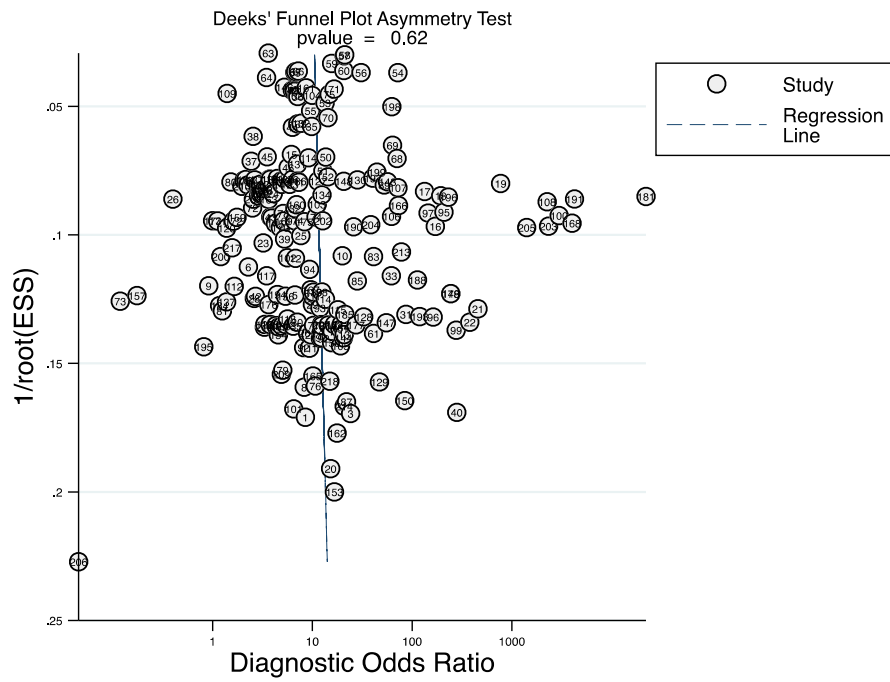


Table S5. Biomarkers in adults, pulmonary TB, HIV-negative

Biomarkers meeting TPP criteria are indicated in bold

AUC=area under the curve, DM=diabetes mellitus, ELISA=enzyme-linked immunosorbent assay, HC= healthy controls, LTBI=latent TB infection, MSD=Meso Scale Discovery, N=sample size, ORD=other respiratory diseases, NR=not reported

Biomarker	Study ID	Country	TB cases, N	Control group, N	Control group, N	Sample type, condition	Testing method	Biomarker cut-off value (unit)	Sensitivity (95% CI)	Specificity (95% CI)	AUC (95% CI)
α1AGP1	Mateos, J; 2020 (23)	Mozambique	21	LTBI	15	Serum, Frozen	ELISA	>1.810 mg/mL	0.81 (0.60, 0.92)	0.67 (0.42, 0.85)	0.79 (0.64, 0.94)
A1At	Halliday, A; 2021 (69)	United Kingdom	60	ORD	84	Serum, Frozen	Mass spectrometry	-0.42 NR	0.95 (0.86, 0.99)	0.19 (0.11, 0.29)	0.66 (0.57, 0.75)
Apo-AI	Mateos, J; 2020 (23)	Mozambique	21	LTBI	15	Serum, Frozen	Nephelometry	< 92.0 mg/dL	0.65 (0.43, 0.82)	0.93 (0.69, 0.99)	0.79 (0.64, 0.94)
Apotransferrin	Kumar, NP; 2018 (24)	India	44*	DM	44	Plasma, Frozen	ELISA	NR	0.75 (0.60, 0.87)	0.43 (0.28, 0.59)	0.57 (NR)
C1-INH	Lubbers, R; 2020 (74)	the Gambia	50	HC	50	Serum, Frozen	ELISA	NR	0.56 (0.41, 0.7)	0.94 (0.84, 0.99)	0.75 (0.65, 0.85)
C1q	Lubbers, R; 2018 (73)	South Africa, Italy, the Gambia, Korea, Netherlands	99	HC	117	Serum, NR	ELISA	300.2 µg/mL	0.42 (0.33, 0.53)	0.91 (0.84, 0.95)	0.84 (0.79, 0.89)
	Lubbers, R; 2020 (74)	the Gambia	50	HC	50	Serum, Frozen	ELISA	NR	0.48 (0.34, 0.63)	0.88 (0.76, 0.96)	0.68 (0.57, 0.79)
	Ndiaye, M; 2022 (22)	Madagascar	37	LTBI	24	Plasma, Frozen	Luminex	0.566 NR	0.49 (0.33, 0.64)	0.96 (0.80, 0.99)	0.71 (NR)
CA-125	Mikacic, M; 2017 (77)	Bosnia and Herzegovina	40	ORD and previous TB	180	Serum, NR	Chemoluminescent immunoassay	> 35 IU/mL	0.75 (0.59, 0.87)	0.68 (0.60, 0.74)	NR
CALCOCO2	Garlant, H; 2022 (21)	India, United Kingdom	49	LTBI	111	Whole blood, Frozen	ELISA	2792 ng/mL	0.92 (0.82, 0.97)	0.95 (0.89, 0.98)	0.97 (0.95, 0.99)
CD14	Ndiaye, M; 2022 (22)	Madagascar	37	LTBI	24	Plasma, Frozen	Luminex	0.552 NR	0.97 (0.86, 0.99)	0.91 (0.74, 0.98)	0.96 (NR)
CD52	Garlant, H; 2022 (21)	India, United Kingdom	49	LTBI	111	Serum, Frozen	ELISA	1258 ng/mL	0.92 (0.82, 0.97)	0.22 (0.16, 0.30)	0.57 (0.49, 0.65)
CEA	Mikacic, M; 2017 (77)	Bosnia and Herzegovina	40	ORD and previous TB	180	Serum, NR	NR	NR	0.10 (0.03, 0.24)	0.79 (0.72, 0.85)	NR

CK-MB	Essone, P; 2022 (66)	Gabon	26	ORD	36	Serum, Frozen	ELISA	< 515.9 pg/mL	0.78 (0.56, 0.93)	0.74 (0.56, 0.87)	0.81 (0.69, 0.93)
CLEC3B	Ndiaye, M; 2022 (x,x)	Madagascar	37	LTBI	24	Plasma, Frozen	Luminex	0.614 NR	0.51 (0.36, 0.67)	0.87 (0.69, 0.96)	0.69 (NR)
CRP	Andrade, B; 2013 (25)	India	97	LTBI	39	Plasma, Frozen	Luminex	NR	0.86 (0.79, 0.92)	0.46 (0.30, 0.63)	0.71 (0.62, 0.80)
	Calderwood, C; 2022 (63)	South Africa	142	ORD	393	Serum, Frozen	Turbidimetry	> 10 mg/L	0.91 (0.85, 0.95)	0.62 (0.57, 0.66)	0.82 (0.79, 0.86)
	Mateos, J; 2020 (23)	Mozambique	21	LTBI	15	Serum, Frozen	ELISA	> 70.90 µg/mL	0.95 (0.77, 0.99)	0.93 (0.70, 0.99)	0.92 (0.80, 1.0)
	Meyer, A; 2020 (76)	Uganda	46	ORD	73	Serum, Frozen	ELISA	> 10 mg/L	0.78 (0.64, 0.89)	0.52 (0.40, 0.64)	0.65 (0.57, 0.74)
	Meyer, A; 2020 (76)	Uganda	46	ORD	73	Serum, Frozen	ELISA	≥ 1.5 mg/L	0.91 (0.79, 0.98)	0.21 (0.12, 0.32)	0.65 (0.57, 0.74)
	Moreira, F; 2021 (78)	Brazil	100	prisoners	200	Serum, Frozen	Immunoassay (POC setting)	NR	0.90 (0.82, 0.95)	0.28 (0.20, 0.42)	0.79 (0.73, 0.84)
	Sahin, F; 2013 (17)	Turkey	115	ORD	70	Serum, NR	Turbidimetry	< 9.4 mg/L	0.70 (0.61, 0.79)	0.71 (0.59, 0.82)	0.79 (NR)
	Samuels, T; 2021 (83)	Peru, South Africa, Vietnam, Cambodia, Georgia	274	ORD	253	Serum, Frozen	ELISA	6 mg/L	0.79 (0.73, 0.83)	0.64 (0.58, 0.70)	0.76 (0.72, 0.81)
	Samuels, T; 2021 (83)	Peru, South Africa, Vietnam, Cambodia, Georgia	274	ORD	253	Serum, Frozen	ELISA	≥ 10 mg/L	0.73 (0.67, 0.78)	0.71 (0.65, 0.76)	0.76 (0.72, 0.81)
CXCL1	Kumar, NP; 2019 (87)	India	88	LTBI	44	Plasma, Frozen	Luminex	NR	0.69 (0.59, 0.79)	0.53 (0.38, 0.66)	0.68 (NR)
CXCL11	Kumar, NP; 2019 (87)	India	88	LTBI	44	Plasma, Frozen	Luminex	NR	0.45 (0.35, 0.56)	0.93 (0.82, 0.98)	0.71 (NR)
	Lee, K; 2015 (72)	South Korea	165	ORD	389	Plasma, Frozen	ELISA	60.5 pg/mL	0.73 (0.65, 0.79)	0.85 (0.81, 0.88)	0.86 (0.83, 0.89)
CXCL13	Estevez, O; 2020 (67)	Spain	28	LTBI	27	Serum, Frozen	Luminex	28.03 pg/mL	0.72 (0.51, 0.88)	0.80 (0.59, 0.93)	0.78 (NR)
CXCL2	Kumar, NP; 2019 (87)	India	88	LTBI	44	Plasma, Frozen	Luminex	NR	0.78 (0.69, 0.86)	0.59 (0.44, 0.72)	0.66 (NR)
ECM1	Ndiaye, M; 2022 (22)	Madagascar	37	LTBI	24	Plasma, Frozen	Luminex	0.628 NR	0.32 (0.20, 0.49)	0.91 (0.74, 0.98)	0.58 (NR)

Eotaxin	Peruhype-Magalhaes, P; 2023 (80)	Brazil	84	HC	79	Serum, NR	Luminex	10.3 pg/mL	0.63 (0.51, 0.74)	0.47 (0.36, 0.58)	0.50 (0.42, 0.60)
Ferretin	Kumar, NP; 2018 (24)	India	44*	DM	44	Plasma, Frozen	ELISA	NR	0.93 (0.81, 0.99)	0.75 (0.60, 0.87)	0.92 (NR)
Gal-9	Shiratori, B; 2014 (27)	Phillipines	37	HC	30	Plasma, Frozen	ELISA	> 258 pg/mL	0.76 (0.59, 0.88)	0.80 (0.61, 0.92)	0.77 (NR)
GBP1	Garlant, H; 2022 (21)	India, United Kingdom	49	LTBI	111	Serum, Frozen	ELISA	2728 ng/mL	0.92 (0.82, 0.97)	0.82 (0.75, 0.88)	0.95 (0.92, 0.98)
G-CSF	Peruhype-Magalhaes, P; 2023 (80)	Brazil	84	HC	79	Serum, NR	Luminex	2.7 pg/mL	0.72 (0.61, 0.82)	0.71 (0.57, 0.82)	0.75 (0.66, 0.82)
	Yang, Q; 2014 (86)	China	20	LTBI	17	Plasma, Frozen	Luminex	34.83 pg/mL	0.75 (0.51, 0.91)	0.88 (0.64, 0.99)	0.83 (0.68, 0.97)
HEPC	Essone, P; 2022 (66)	Gabon	26	ORD	36	Serum, Frozen	ELISA	< 130.6 ng/mL	0.87 (0.66, 0.97)	0.64 (0.46, 0.80)	0.79 (0.67, 0.91)
	Kumar, NP; 2018 (24)	India	44*	DM	44	Plasma, Frozen	ELISA	NR	0.89 (0.75, 0.96)	0.55 (0.39, 0.70)	0.70 (NR)
HO-1	Andrade, B; 2013 (25)	India	97	LTBI	39	Plasma, Frozen	ELISA	NR	0.92 (0.85, 0.96)	0.95 (0.83, 0.99)	0.95 (0.91, 0.98)
	Andrade, B; 2015 (26)	Brazil	63	LTBI	15	Plasma, Frozen	ELISA	> 2.397 ng/mL	0.92 (0.82, 0.97)	0.93 (0.68, 0.99)	0.95 (0.91, 1.0)
	Andrade, B; 2015 (26)	India	97	LTBI	39	Plasma, Frozen	ELISA	> 1.65 ng/mL	0.92 (0.84, 0.96)	0.93 (0.66, 0.99)	0.94 (0.90, 0.98)
HP	Mateos, J; 2020 (23)	Mozambique	21	LTBI	15	Serum, Frozen	ELISA	> 15.42 µg/mL	0.62 (0.41, 0.79)	0.80 (0.55, 0.93)	0.67 (0.49, 0.85)
HPX	Kumar, NP; 2018 (24)	India	44*	DM	44	Plasma, Frozen	ELISA	NR	0.59 (0.43, 0.74)	0.80 (0.65, 0.90)	0.59 (NR)
I-309	Kumar, NP; 2019 (87)	India	88	LTBI	44	Plasma, Frozen	Luminex	NR	0.58 (0.48, 0.68)	0.89 (0.76, 0.95)	0.74 (NR)
IFIT3	Garlant, H; 2022 (21)	India, United Kingdom	49	LTBI	111	Whole blood, Frozen	ELISA	8.749 ng/mL	0.92 (0.83, 0.97)	0.86 (0.80, 0.81)	0.93 (0.89, 0.96)
IFITM3	Garlant, H; 2022 (21)	India, United Kingdom	49	LTBI	111	Whole blood, Frozen	ELISA	3105 ng/mL	0.92 (0.83, 0.97)	1.0 (0.97, 1.0)	0.98 (0.95, 1.0)
IFN-γ	Lee, K; 2015 (72)	South Korea	165	ORD	389	Plasma, Frozen	ELISA	15.2 pg/mL	0.39 (0.31, 0.47)	0.69 (0.64, 0.73)	0.48 (0.42, 0.54)

	Peruhype-Magalhaes, P; 2023 (80)	Brazil	84	HC	79	Serum, NR	Luminex	13.6 pg/mL	0.77 (0.66, 0.85)	0.47 (0.35, 0.59)	0.62 (0.54, 0.69)
IGFBP-3	Ndiaye, M; 2022 (22)	Madagascar	37	LTBI	24	Plasma, Frozen	Luminex	0.532 NR	0.73 (0.57, 0.85)	0.87 (0.69, 0.96)	0.84 (NR)
IL-1 β	Peruhype-Magalhaes, P; 2023 (80)	Brazil	84	HC	79	Serum, NR	Luminex	1.0 pg/mL	0.44 (0.33, 0.55)	0.80 (0.70, 0.89)	0.64 (0.56, 0.71)
IL-1Ra	Peruhype-Magalhaes, P; 2023 (80)	Brazil	84	HC	79	Serum, NR	Luminex	11.4 pg/mL	0.50 (0.38, 0.62)	0.74 (0.62, 0.84)	0.60 (0.51, 0.68)
IL-4	Peruhype-Magalhaes, P; 2023 (80)	Brazil	84	HC	79	Serum, NR	Luminex	0.3 pg/mL	0.45 (0.34, 0.57)	0.78 (0.67, 0.87)	0.62 (0.54, 0.69)
IL-6	Estevez, O; 2020 (67)	Spain	28	LTBI	27	Serum, Frozen	Luminex	> 0.0292 pg/mL	1.0 (0.86, 1.0)	0.45 (0.26, 0.67)	0.62 (NR)
	Peruhype-Magalhaes, P; 2023 (80)	Brazil	84	HC	79	Serum, NR	Luminex	1.0 pg/mL	0.87 (0.78, 0.93)	0.81 (0.71, 0.89)	0.90 (0.84, 0.94)
IL-7	Estevez, O; 2020 (67)	Spain	28	LTBI	27	Serum, Frozen	Luminex	5.391 pg/mL	0.76 (0.55, 0.91)	0.67 (0.41, 0.87)	0.73 (NR)
	Peruhype-Magalhaes, P; 2023 (80)	Brazil	84	HC	79	Serum, NR	Luminex	2.2 pg/mL	0.64 (0.50, 0.75)	0.69 (0.54, 0.81)	0.63 (0.53, 0.71)
IL-8	Peruhype-Magalhaes, P; 2023 (80)	Brazil	84	HC	79	Serum, NR	Luminex	5.0 pg/mL	0.69 (0.58, 0.79)	0.71 (0.59, 0.80)	0.72 (0.64, 0.80)
	Shiratori, B; 2014 (27)	Phillipines	37	HC	30	Plasma, Frozen	ELISA	> 3.5 pg/mL	0.76 (0.59, 0.88)	0.77 (0.58, 0.90)	0.75 (NR)
IL-9	Peruhype-Magalhaes, P; 2023 (80)	Brazil	84	HC	79	Serum, NR	Luminex	1.1 pg/mL	0.78 (0.60, 0.91)	0.46 (0.28, 0.64)	0.54 (0.40, 0.66)
IL-10	Peruhype-Magalhaes, P; 2023 (80)	Brazil	84	HC	79	Serum, NR	Luminex	0.9 pg/mL	0.64 (0.53, 0.74)	0.54 (0.42, 0.66)	0.62 (0.54, 0.69)
IL-12	Peruhype-Magalhaes, P; 2023 (80)	Brazil	84	HC	79	Serum, NR	Luminex	0.2 pg/mL	0.93 (0.78, 0.99)	0.20 (0.05, 0.48)	0.54 (0.38, 0.69)
IL-13	Peruhype-Magalhaes, P; 2023 (80)	Brazil	84	HC	79	Serum, NR	Luminex	1.4 pg/mL	0.16 (0.08, 0.26)	0.97 (0.89, 0.99)	0.52 (0.43, 0.60)
IL-17A	Peruhype-Magalhaes, P; 2023 (80)	Brazil	84	HC	79	Serum, NR	Luminex	0.8 pg/mL	0.65 (0.43, 0.82)	0.67 (0.35, 0.88)	0.60 (0.38, 0.82)

IP-10	Estevez, O; 2020 (67)	Spain	28	LTBI	27	Serum, Frozen	Luminex	450.9 pg/mL	0.64 (0.43, 0.82)	0.92 (0.74, 0.99)	0.78 (NR)
	Kumar, NP; 2019 (87)	India	88	LTBI	44	Plasma, Frozen	Luminex	NR	0.81 (0.71, 0.88)	0.50 (0.36, 0.64)	0.74 (NR)
	Lee, K; 2015 (72)	South Korea	165	ORD	389	Plasma, Frozen	ELISA	68.5 pg/mL	0.74 (0.67, 0.81)	0.65 (0.60, 0.70)	0.74 (0.70, 0.78)
	Ndiaye, M; 2022 (22)	Madagascar	37	LTBI	24	Plasma, Frozen	Luminex	0.594 NR	0.54 (0.38,0.69)	1.0 (0.86,1.0)	0.76 (NR)
	Peruhype-Magalhaes, P; 2023 (80)	Brazil	84	HC	79	Serum, NR	Luminex	285.1 pg/mL	0.73 (0.62, 0.82)	0.89 (0.80, 0.95)	0.86 (0.80, 0.90)
	Shiratori, B; 2014 (27)	Phillipines	37	HC	30	Plasma, Frozen	ELISA	>342 pg/mL	0.95 (0.82, 0.99)	0.93 (0.78, 0.99)	0.99 (NR)
	Yang, Q; 2014 (86)	China	20	LTBI	17	Plasma, Frozen	ELISA	1,008 pg/mL	0.88 (0.47, 0.99)	0.92 (0.62, 0.99)	0.92 (0.78, 1.05)
KLKB1	Mateos, J; 2020 (23)	Mozambique	21	LTBI	15	Serum, Frozen	ELISA	< 338.8 µg/mL	0.95 (0.76, 0.99)	0.47 (0.25, 0.70)	0.72 (0.54, 0.89)
MCP-1	Peruhype-Magalhaes, P; 2023 (80)	Brazil	84	HC	79	Serum, NR	Luminex	3.4 pg/mL	0.71 (0.57, 0.82)	0.48 (0.34, 0.62)	0.59 (0.50, 0.68)
	Shiratori, B; 2014 (27)	Phillipines	37	HC	30	Plasma, Frozen	ELISA	> 92 pg/mL	0.76 (0.59, 0.88)	0.63 (0.44, 0.80)	0.79 (NR)
MIG	Kumar, NP; 2019 (87)	India	88	LTBI	44	Plasma, Frozen	Luminex	NR	0.55 (0.44, 0.65)	0.85 (0.71, 0.92)	0.74 (NR)
	Lee, K; 2015 (72)	South Korea	165	ORD	389	Plasma, Frozen	ELISA	148.9 pg/mL	0.79 (0.72, 0.85)	0.70 (0.65, 0.75)	0.82 (0.78, 0.85)
	Yang, Q; 2014 (86)	China	20	LTBI	17	Plasma, Frozen	ELISA	1,976 pg/mL	0.53 (0.29, 0.76)	0.94 (0.71, 0.99)	0.86 (0.74, 0.98)
MIP-1α	Peruhype-Magalhaes, P; 2023 (80)	Brazil	84	HC	79	Serum, NR	Luminex	1.5 pg/mL	0.41 (0.29, 0.54)	0.84 (0.68, 0.94)	0.62 (0.52, 0.72)
MIP-1β	Peruhype-Magalhaes, P; 2023 (80)	Brazil	84	HC	79	Serum, NR	Luminex	7.7 pg/mL	0.62 (0.51, 0.72)	0.57 (0.45, 0.68)	0.55 (0.47, 0.62)
MMP-1	Andrade, B; 2015 (26)	India	97	LTBI	39	Plasma, Frozen	Luminex	> 1.21 ng/mL	0.85 (0.78, 0.91)	0.93 (0.66, 0.99)	0.96 (0.91, 1.0)
	Andrade, B; 2015 (26)	Brazil	63	LTBI	15	Plasma, Frozen	Luminex	> 3.511 ng/mL	0.78 (0.66, 0.87)	0.73 (0.45, 0.92)	0.85 (0.76, 0.93)

	Kathamuthu, G; 2020 (28)	India	68	LTBI	44	Plasma, NR	Luminex	NR	0.99 (0.92, 0.99)	1 (0.92, 1.0)	0.99 (NR)
MMP-2	Kathamuthu, G; 2020 (28)	India	68	LTBI	44	Plasma, NR	Luminex	NR	0.53 (0.40, 0.65)	0.50 (0.35, 0.65)	0.52 (NR)
MMP-3	Kathamuthu, G; 2020 (28)	India	68	LTBI	44	Plasma, NR	Luminex	NR	0.57 (0.45, 0.69)	0.55 (0.39, 0.70)	0.54 (NR)
MMP-7	Kathamuthu, G; 2020 (28)	India	68	LTBI	44	Plasma, NR	Luminex	NR	0.50 (0.38, 0.62)	0.50 (0.35, 0.65)	0.61 (NR)
MMP-8	Kathamuthu, G; 2020 (28)	India	68	LTBI	44	Plasma, NR	Luminex	NR	0.66 (0.54, 0.77)	0.77 (0.62, 0.89)	0.80 (NR)
MMP-9	Kathamuthu, G; 2020 (28)	India	68	LTBI	44	Plasma, NR	Luminex	NR	0.74 (0.61, 0.84)	0.75 (0.60, 0.87)	0.88 (NR)
MMP-12	Kathamuthu, G; 2020 (28)	India	68	LTBI	44	Plasma, NR	Luminex	NR	0.63 (0.51, 0.75)	0.75 (0.60, 0.87)	0.76 (NR)
MMP-13	Kathamuthu, G; 2020 (28)	India	68	LTBI	44	Plasma, NR	Luminex	NR	0.51 (0.39, 0.64)	0.82 (0.67, 0.92)	0.53 (NR)
MYBPC1	Essone, P; 2022 (66)	Gabon	26	ORD	36	Serum, Frozen	ELISA	> 26.98 ng/mL	0.7 (0.50, 0.86)	0.61 (0.43, 0.77)	0.62 (0.48, 0.76)
OPN	Shiratori, B; 2014 (27)	Phillipines	37	HC	30	Plasma, Frozen	ELISA	> 94 pg/mL	0.95 (0.82, 0.99)	0.93 (0.78, 0.99)	0.97 (NR)
PDGF-BB	Peruhype-Magalhaes, P; 2023 (80)	Brazil	84	HC	79	Serum, NR	Luminex	249.4 pg/mL	0.73 (0.62, 0.83)	0.52 (0.40, 0.64)	0.60 (0.52, 0.68)
PD-L1	Garlant, H; 2022 (21)	India, United Kingdom	49	LTBI	111	Whole blood, Frozen	ELISA	0.5864 ng/mL	1.0 (0.94, 1.0)	1.0 (0.97, 1.0)	1.0 (1.0, 1.0)
PLa2G2A	Essone, P; 2022 (66)	Gabon	26	ORD	36	Serum, Frozen	ELISA	> 1.19 pg/mL	0.48 (0.29, 0.68)	0.56 (0.38, 0.72)	0.48 (0.36, 0.65)
RANTES	Peruhype-Magalhaes, P; 2023 (80)	Brazil	84	HC	79	Serum, NR	Luminex	60.3 pg/mL	0.66 (0.54, 0.76)	0.58 (0.47, 0.69)	0.62 (0.54, 0.70)
SAA	Andrade, B; 2013 (25)	India	97	LTBI	39	Plasma, NR	Luminex	NR	0.91 (0.85, 0.96)	0.71 (0.42, 0.92)	0.89 (0.82, 0.96)
	Fontes, C; 2023 (48)	Brazil	51	ORD	32	Plasma, Frozen	Nephelometry	83.85 mg/L	0.97 (0.87, 0.99)	0.78 (0.61, 0.89)	0.90 (0.83, 0.97)
SAMD9L	Garlant, H; 2022 (21)	India, United Kingdom	49	LTBI	111	Whole blood, Frozen	ELISA	2430 ng/mL	0.96 (0.88, 0.99)	1.0 (0.97, 1.0)	0.99 (0.99, 1.0)

SELL	Ndiaye, M; 2022	Madagascar	37	LTBI	24	Plasma, Frozen	Luminex	0.499 NR	0.92 (0.79, 0.97)	0.91 (0.74, 0.98)	0.93 NR
SNX10	Garlant, H; 2022 (21)	India, United Kingdom	49	LTBI	111	Whole blood, Frozen	ELISA	3177 ng/mL	0.92 (0.82, 0.97)	0.95 (0.91, 0.98)	0.97 (0.95, 0.99)
TfR	Kumar, NP; 2018 (24)	India	44*	DM	44	Plasma, NR	ELISA	NR	0.61 (0.46, 0.76)	0.43 (0.28, 0.59)	0.58 (NR)
TGF- α	Estevez, O; 2020 (67)	Spain	28	LTBI	27	Serum, Frozen	Luminex	6.968 pg/mL	0.84 (0.64, 0.95)	0.63 (0.41, 0.82)	0.68 (NR)
TIMP-1	Kathamuthu, G; 2020 (28)	India	68	LTBI	44	Plasma, NR	Luminex	NR	0.71 (0.58, 0.81)	0.84 (0.70, 0.93)	0.70 (NR)
TIMP-2	Kathamuthu, G; 2020 (28)	India	68	LTBI	44	Plasma, NR	Luminex	NR	1.0 (0.95, 1.0)	0.95 (0.85, 0.99)	0.99 (NR)
TIMP-3	Kathamuthu, G; 2020 (28)	India	68	LTBI	44	Plasma, NR	Luminex	NR	0.65 (0.52, 0.76)	0.95 (0.85, 0.99)	0.62 (NR)
TIMP-4	Kathamuthu, G; 2020 (28)	India	68	LTBI	44	Plasma, NR	Luminex	NR	0.99 (0.92, 0.99)	0.95 (0.85, 0.99)	0.98 (NR)
TMEM49	Garlant, H; 2022 (21)	India, United Kingdom	49	LTBI	111	Whole blood, Frozen	ELISA	369.6 ng/mL	0.92 (0.82, 0.97)	0.0 (0.0, 0.28)	0.49 (0.41, 0.57)
TNF	Estevez, O; 2020 (67)	Spain	28	LTBI	27	Serum, Frozen	Luminex	12.22 pg/mL	0.88 (0.69, 0.97)	0.40 (0.21, 0.61)	0.59 (NR)
	Peruhype-Magalhaes, P; 2023 (80)	Brazil	84	HC	79	Serum, NR	Luminex	9.4 pg/mL	0.45 (0.34, 0.56)	0.71 (0.60, 0.81)	0.56 (0.48, 0.64)
	Shiratori, B; 2014 (27)	Phillipines	37	HC	30	Plasma, Frozen	ELISA	> 5.99 pg/mL	0.81 (0.65, 0.92)	0.70 (0.51, 0.85)	0.80 (NR)
Transferrin	Kumar, NP; 2018 (24)	India	44*	DM	44	Plasma, Frozen	ELISA	NR	0.89 (0.75, 0.96)	0.91 (0.78, 0.98)	0.95 (NR)
	Mateos, J; 2020 (23)	Mozambique	21	LTBI	15	Serum, Frozen	ELISA	< 3928 μ g/mL	0.77 (0.55, 0.89)	0.87 (0.62, 0.98)	0.83 (0.69, 0.97)
VEGF	Peruhype-Magalhaes, P; 2023 (80)	Brazil	84	HC	79	Serum, NR	Luminex	9.7 pg/mL	0.61 (0.49, 0.73)	0.76 (0.62, 0.87)	0.70 (0.62, 0.79)

* Kumar, 2018: all TB cases with diabetes mellitus

Table S6. Biomarkers in adults, pulmonary TB, HIV-positive

Biomarkers meeting TPP criteria are indicated in bold

AUC=area under the curve, DM=diabetes mellitus, ELISA=enzyme-linked immunosorbent assay, HC= healthy controls, LTBI=latent TB infection, MSD=Meso Scale Discovery, N=sample size, ORD=other respiratory diseases, NR=not reported

Biomarker	Study ID	Country	TB cases, N	Control group	Control group, N	Sample type, condition	Testing method	Biomarker cut-off value (unit)	Sensitivity (95% CI)	Specificity (95% CI)	AUC (95% CI)
CD14	Liu, Y; 2018 (29)	South Africa	39	HC	24	Serum, Frozen	ELISA	1540 ng/mL	0.95 (0.83, 0.99)	0.96 (0.79, 0.99)	NR
CRP	Boyles, T; 2020 (62)	South Africa	75	ORD	132	NR, Fresh	Turbidimetry (POC setting)	≥10 mg/L	0.95 (0.87, 0.98)	0.26 (0.19, 0.34)	NR
	Calderwood, C; 2022 (63)	South Africa	113	ORD	276	Serum, Frozen	Turbidimetry	≥10 mg/L	0.95 (0.89, 0.98)	0.43 (0.37, 0.49)	0.77 (0.73, 0.82)
	Ciccacci, F; 2019 (47)	Mozambique	21	pre-ART screening	122	Plasma, Frozen	ELISA	> 10 mg/L	0.76 (0.55, 0.89)	0.95 (0.90, 0.98)	NR
	Farr, K; 2018 (68)	Uganda	155	ORD	107	Plasma, Frozen	Turbidimetry	NR	0.90 (0.85, 0.95)	0.33 (0.30, 0.36)	NR
	Lawn, S; 2013 (71)	South Africa	81	pre-ART screening	415	Serum, Frozen	ELISA	≥ 5 mg/l	0.90 (0.81, 0.95)	0.44 (0.39, 0.49)	0.81 (NR)
	Ruperez, M; 2023 (81)	South Africa, Zambia	25	ORD	251	Whole blood, Fresh	Immunoassay (POC setting)	≥10 mg/L	0.40 (0.21, 0.61)	0.79 (0.73, 0.83)	0.59 (0.49, 0.69)
	Ruperez, M; 2023 (81)	South Africa, Zambia	25	ORD	251	Whole blood, Fresh	Immunoassay (POC setting)	≥5 mg/L	0.60 (0.39, 0.79)	0.63 (0.57, 0.69)	0.61 (0.51, 0.72)
	Samuels, T; 2021 (83)	Peru, South Africa, Vietnam, Cambodia, Georgia	111	ORD	102	Serum, Frozen	ELISA	≥ 10 mg/L	0.92 (0.85, 0.96)	0.53 (0.43, 0.62)	0.83 (0.78, 0.89)
	Shapiro, A; 2018 (84)	South Africa	42	pre-ART screening	383	Serum, Frozen	Turbidimetry	> 5 mg/L	0.91 (0.77, 0.97)	0.59 (0.53, 0.64)	0.80 (0.72, 0.88)
	Shapiro, A; 2018 (84)	South Africa	42	pre-ART screening	383	Serum, Frozen	Turbidimetry	> 10 mg/L	0.79 (0.63, 0.90)	0.72 (0.68, 0.77)	0.80 (0.72, 0.88)
CXCL1	Yoon, C; 2017 (18)	Uganda	163	pre-ART screening	1014	Whole blood, Fresh	Immunoassay (POC setting)	≥ 8 mg/L	0.90 (0.85, 0.94)	0.70 (0.67, 0.72)	0.81 (0.78, 0.83)
	Yoon, C; 2017 (18)	Uganda	163	pre-ART screening	1014	Whole blood, Fresh	Immunoassay (POC setting)	≥ 10 mg/L	0.89 (0.83, 0.93)	0.72 (0.69, 0.75)	0.81 (0.78, 0.83)
	Farr, K; 2018 (68)	Uganda	155	ORD	107	Plasma, Frozen	Luminex	NR	0.90 (0.85, 0.95)	0.01 (0.00, 0.03)	NR

HO-1	Uwimaana, E; 2021 (85)	Uganda	70	LTBI	70	Plasma, Frozen	ELISA	> 8.95 ng/mL	0.59 (0.47, 0.69)	0.67 (0.56, 0.77)	0.57 (0.47, 0.66)
IFN- γ	Farr, K; 2018 (68)	Uganda	155	ORD	107	Plasma, Frozen	Luminex	NR	0.90 (0.85, 0.95)	0.27 (0.22, 0.32)	NR
IL-6	Farr, K; 2018 (68)	Uganda	155	ORD	107	Plasma, Frozen	Luminex	NR	0.90 (0.85, 0.95)	0.44 (0.37, 0.50)	NR
IL-18	Farr, K; 2018 (68)	Uganda	155	ORD	107	Plasma, Frozen	Luminex	NR	0.90 (0.85, 0.95)	0.13 (0.08, 0.19)	NR
MDC	Farr, K; 2018 (68)	Uganda	155	ORD	107	Plasma, Frozen	Luminex	NR	0.90 (0.85, 0.95)	0.02 (0.00, 0.04)	NR
MIG	Farr, K; 2018 (68)	Uganda	155	ORD	107	Plasma, Frozen	Luminex	NR	0.90 (0.85, 0.95)	0.16 (0.11, 0.21)	NR

Table S7. Biomarkers in adults, pulmonary TB, HIV-positive and negative, HIV unknown

Biomarkers meeting TPP criteria are indicated in bold

AUC=area under the curve, DM=diabetes mellitus, ELISA=enzyme-linked immunosorbent assay, HC= healthy controls, LTBI=latent TB infection, MSD=Meso Scale Discovery, N=sample size, ORD=other respiratory diseases, NR=not reported

Biomarker	Study ID	Country	TB cases, N	Control group	Control group, N	Sample type	Testing method	Biomarker cut-off value (unit)	Sensitivity (95% CI)	Specificity (95% CI)	AUC (95% CI)
HIV mixed positive and negative											
ADAMTS-13	Jacobs, R; 2016 (32)	South Africa	22	ORD	33	Plasma, Frozen	Luminex	> 3466 ng/mL	0.68 (0.45, 0.86)	0.64 (0.45, 0.80)	0.66 (0.51, 0.81)
Apo-AI	Jacobs, R; 2016 (32)	South Africa	22	ORD	33	Plasma, Frozen	Luminex	< 318930 ng/mL	0.73 (0.50, 0.89)	0.82 (0.65, 0.93)	0.76 (0.62, 0.89)
AT-III	Jacobs, R; 2016 (32)	South Africa	22	ORD	33	Plasma, Frozen	Luminex	< 744162 ng/mL	0.91 (0.71, 0.99)	0.61 (0.42, 0.77)	0.70 (0.56, 0.84)
BDNF	Jacobs, R; 2016 (32)	South Africa	22	ORD	33	Plasma, Frozen	Luminex	< 3467 pg/mL	0.45 (0.24, 0.68)	0.91 (0.76, 0.98)	0.69 (0.55, 0.84)
bFGF	Namuganga, A; 2023 (31)	Uganda	55	ORD	106	Serum, Frozen	Luminex	85 pg/mL	0.87 (0.76, 0.94)	0.12 (0.07, 0.20)	0.63 (0.53, 0.73)
CCL14	Jacobs, R; 2016 (32)	South Africa	22	ORD	33	Plasma, Frozen	Luminex	> 136956 pg/mL	0.59 (0.36, 0.79)	0.85 (0.68, 0.95)	0.75 (0.61, 0.89)
CFH	Jacobs, R; 2016 (32)	South Africa	22	ORD	33	Plasma, Frozen	Luminex	> 808359 ng/mL	0.68 (0.45, 0.86)	0.82 (0.65, 0.93)	0.72 (0.57, 0.86)
CRP	Calderwood, C; 2022 (63)	South Africa	255	ORD	677	Serum, Frozen	Turbidimetry	10 mg/L	0.93 (0.89, 0.95)	0.54 (0.50, 0.58)	0.80 (0.77, 0.83)

	Calderwood, C; 2022 (63)	South Africa	255	ORD	677	Serum, Frozen	Turbidimetry	5 mg/L	0.97 (0.94, 0.98)	0.39 (0.35, 0.42)	0.80 (0.77, 0.83)
	Jacobs, R; 2016 (32)	South Africa	22	ORD	33	Plasma, Frozen	Luminex	> 9081 ng/mL (9.1 mg/L)	0.82 (0.60, 0.95)	0.9 (0.76, 0.98)	0.89 (0.79, 1.00)
	Koepfel, L; 2023 (38)	Peru, South Africa, Vietnam	177	ORD	302	Serum, Frozen	MSD	NR	0.75 (0.68, 0.81)	0.70 (0.64, 0.75)	0.73 (NR)
	Ruperez, M; 2023 (81)	South Africa, Zambia	76	ORD	1231	Whole blood, Fresh	Immunoassay (POC setting)	≥5 mg/L	0.50 (0.38, 0.62)	0.72 (0.70, 0.75)	0.61 (0.55, 0.67)
	Ruperez, M; 2023 (81)	South Africa, Zambia	76	ORD	1231	Whole blood, Fresh	Immunoassay (POC setting)	≥10 mg/L	0.36 (0.25, 0.47)	0.86 (0.84, 0.88)	0.61 (0.55, 0.67)
	Samuels, T; 2021 (83)	Peru, South Africa, Vietnam, Cambodia, Georgia	391	ORD	374	Serum, Frozen	ELISA	≥ 10 mg/L	0.78 (0.73, 0.82)	0.66 (0.61, 0.71)	0.77 (0.74, 0.81)
	Wilson, D; 2011 (30)	South Africa	135	ORD	115	Serum, NR	Turbidimetry	≥5 mg/L	0.98 (0.94, 0.99)	0.59 (0.50, 0.68)	0.91 (0.87, 0.95)
	Wilson, D; 2011 (30)	South Africa	135	ORD	115	Serum, NR	Turbidimetry	≥ 10 mg/L	0.95 (0.90, 0.98)	0.77 (0.69, 0.85)	0.91 (0.87, 0.95)
CXCL11	Jacobs, R; 2016 (32)	South Africa	22	ORD	33	Plasma, Frozen	Luminex	> 276.5 pg/mL	0.95 (0.77, 1.0)	0.36 (0.20, 0.55)	0.68 (0.54, 0.83)
Eotaxin	Namuganga, A; 2023 (31)	Uganda	55	ORD	106	Serum, Frozen	Luminex	1887 pg/mL	0.91 (0.80, 0.96)	0.11 (0.06, 0.19)	0.64 (0.54, 0.73)
FAS	Jacobs, R; 2016 (32)	South Africa	22	ORD	33	Plasma, Frozen	Luminex	> 6.7 ng/mL	0.67 (0.43, 0.85)	0.68 (0.49, 0.83)	0.65 (0.50, 0.81)
Ferritin	Jacobs, R; 2016 (32)	South Africa	22	ORD	33	Plasma, Frozen	Luminex	> 93785 pg/mL	0.91 (0.71, 0.99)	0.67 (0.48, 0.82)	0.78 (0.64, 0.92)
GDF-15	Jacobs, R; 2016 (32)	South Africa	22	ORD	33	Plasma, Frozen	Luminex	> 21.06 ng/mL	0.91 (0.71, 0.99)	0.55 (0.36, 0.72)	0.75 (0.62, 0.88)
GM-CSF	Namuganga, A; 2023 (31)	Uganda	55	ORD	106	Serum, Frozen	Luminex	147 pg/mL	0.82 (0.70, 0.90)	0.40 (0.31, 0.49)	0.67 (0.58, 0.77)
I-309	Jacobs, R; 2016 (32)	South Africa	22	ORD	33	Plasma, Frozen	Luminex	> 1.945 pg/mL	0.68 (0.45, 0.86)	0.90 (0.73, 0.98)	0.8 (0.67, 0.93)
	Koepfel, L; 2023 (38)	Peru, South Africa, Vietnam	177	ORD	302	Serum, Frozen	MSD	NR	0.81 (0.74, 0.86)	0.70 (0.64, 0.75)	0.87 (NR)
IFN-γ	Jacobs, R; 2016 (32)	South Africa	22	ORD	33	Plasma, Frozen	Luminex	> 3.910 pg/mL	0.91 (0.70, 0.99)	0.48 (0.31, 0.66)	0.69 (0.54, 0.83)

	Namuganga, A; 2023 (31)	Uganda	55	ORD	106	Serum, Frozen	Luminex	102 pg/mL	0.91 (0.80, 0.96)	0.14 (0.09, 0.22)	0.61 (0.51, 0.70)
IL-1 β	Namuganga, A; 2023 (31)	Uganda	55	ORD	106	Serum, Frozen	Luminex	143 pg/mL	0.84 (0.72, 0.91)	0.53 (0.43, 0.62)	0.74 (0.66, 0.83)
IL-2	Namuganga, A; 2023 (31)	Uganda	55	ORD	106	Serum, Frozen	Luminex	95 pg/mL	0.80 (0.68, 0.88)	0.48 (0.39, 0.58)	0.68 (0.59, 0.77)
IL-6	Namuganga, AR; 2017 (79)	Uganda	39	ORD	39	Serum, Frozen	Luminex	> 36.4 pg/mL	0.46 (0.30, 0.63)	0.97 (0.87, 0.99)	0.85 (NR)
	Namuganga, A; 2023 (31)	Uganda	55	ORD	106	Serum, Frozen	Luminex	187 pg/mL	0.87 (0.76, 0.94)	0.63 (0.54, 0.72)	0.83 (0.77, 0.90)
IL-8	Namuganga, A; 2023 (31)	Uganda	55	ORD	106	Serum, Frozen	Luminex	131 pg/mL	0.91 (0.80, 0.96)	0.12 (0.07, 0.20)	0.64 (0.55, 0.74)
IL-33	Jacobs, R; 2016 (32)	South Africa	22	ORD	33	Plasma, Frozen	Luminex	> 131.8 pg/mL	0.68 (0.45, 0.86)	0.61 (0.42, 0.77)	0.63 (0.48, 0.78)
IL12p70	Namuganga, A; 2023 (31)	Uganda	55	ORD	106	Serum, Frozen	Luminex	65 pg/mL	0.82 (0.70, 0.90)	0.52 (0.42, 0.61)	0.69 (0.60, 0.78)
IP-10	Jacobs, R; 2016 (32)	South Africa	22	ORD	33	Plasma, Frozen	Luminex	> 746.6 pg/mL	0.86 (0.65, 0.97)	0.73 (0.54, 0.87)	0.78 (0.64, 0.91)
	Namuganga, A; 2023 (31)	Uganda	55	ORD	106	Serum, Frozen	Luminex	4087 pg/mL	0.93 (0.82, 0.97)	0.81 (0.73, 0.87)	0.89 (0.84, 0.94)
MIG	Jacobs, R; 2016 (32)	South Africa	22	ORD	33	Plasma, Frozen	Luminex	> 1700 pg/mL	0.68 (0.45, 0.86)	0.88 (0.72, 0.97)	0.81 (0.69, 0.94)
MIP-1 β	Jacobs, R; 2016 (32)	South Africa	22	ORD	33	Plasma, Frozen	Luminex	> 212263 ng/mL	0.32 (0.14, 0.55)	0.97 (0.84, 1.0)	0.63 (0.48, 0.79)
MIP-4	Jacobs, R; 2016 (32)	South Africa	22	ORD	33	Plasma, Frozen	Luminex	> 220.9 pg/mL	0.50 (0.28, 0.72)	0.91 (0.76, 0.98)	0.70 (0.55, 0.85)
NCAM-1	Jacobs, R; 2016 (32)	South Africa	22	ORD	33	Plasma, Frozen	Luminex	< 477229 pg/mL	0.91 (0.71, 0.99)	0.73 (0.54, 0.87)	0.88 (0.78, 0.98)
NGAL	Jacobs, R; 2016 (32)	South Africa	22	ORD	33	Plasma, Frozen	Luminex	> 552.8 ng/mL	0.59 (0.36, 0.79)	0.76 (0.58, 0.89)	0.65 (0.50, 0.80)
PCT	Jacobs, R; 2016 (32)	South Africa	22	ORD	33	Plasma, Frozen	Luminex	> 8101 pg/mL	0.86 (0.65, 0.97)	0.67 (0.48, 0.82)	0.77 (0.64, 0.90)
PEDF	Jacobs, R; 2016 (32)	South Africa	22	ORD	33	Plasma, Frozen	Luminex	> 11423 pg/mL	0.68 (0.45, 0.86)	0.64 (0.45, 0.80)	0.66 (0.50, 0.81)
P-selectin	Jacobs, R; 2016 (32)	South Africa	22	ORD	33	Plasma, Frozen	Luminex	> 265.7 ng/mL	0.77 (0.55, 0.92)	0.58 (0.39, 0.75)	0.67 (0.53, 0.82)
RANTES	Namuganga, A; 2023 (31)	Uganda	55	ORD	106	Serum, Frozen	Luminex	>70,173 pg/mL	0.82 (0.70, 0.90)	0.61 (0.52, 0.70)	0.67 (0.58, 0.77)

SAA	Jacobs, R; 2016 (32)	South Africa	22	ORD	33	Plasma, Frozen	Luminex	> 8626 ng/mL	0.68 (0.45, 0.86)	0.70 (0.51, 0.84)	0.71 (0.58, 0.85)
SAP	Jacobs, R; 2016 (32)	South Africa	22	ORD	33	Plasma, Frozen	Luminex	> 25958 ng/mL	0.68 (0.45, 0.86)	0.85 (0.68, 0.95)	0.85 (0.72, 0.98)
TNF	Jacobs, R; 2016 (32)	South Africa	22	ORD	33	Plasma, Frozen	Luminex	> 10.85 pg/mL	0.82 (0.60, 0.95)	0.73 (0.54, 0.87)	0.74 (0.61, 0.88)
	Namuganga, A; 2023 (31)	Uganda	55	ORD	106	Serum, Frozen	Luminex	255 pg/mL	0.82 (0.70, 0.90)	0.36 (0.27, 0.45)	0.65 (0.56, 0.75)
TPA	Jacobs, R; 2016 (32)	South Africa	22	ORD	33	Plasma, Frozen	Luminex	> 6307 pg/mL	0.86 (0.65, 0.97)	0.76 (0.58, 0.89)	0.80 (0.68, 0.92)
TTR	Jacobs, R; 2016 (32)	South Africa	22	ORD	33	Plasma, Frozen	Luminex	< 416242 ng/mL	0.82 (0.60, 0.95)	0.76 (0.58, 0.89)	0.78 (0.65, 0.91)
VEGF	Jacobs, R; 2016 (32)	South Africa	22	ORD	33	Plasma, Frozen	Luminex	> 175.6 pg/mL	0.73 (0.50, 0.89)	0.55 (0.36, 0.72)	0.64 (0.50, 0.79)
	Namuganga, AR; 2017 (79)	Uganda	39	ORD	39	Serum, Frozen	Luminex	> 573.8 pg/mL	0.28 (0.15, 0.44)	0.97 (0.87, 0.99)	0.71 (NR)
	Namuganga, A; 2023 (31)	Uganda	55	ORD	106	Serum, Frozen	Luminex	157 pg/mL	0.87 (0.76, 0.94)	0.19 (0.13, 0.27)	0.66 (0.57, 0.76)
HIV status not reported											
CA-125	Du, Z; 2017 (65)	China	59*	HC	48	Serum, NR	Electrochemi-luminescent Immunoassay	13.6 IU/mL	0.88 (0.77, 0.95)	0.96 (0.86, 0.99)	0.96 (0.91, 0.99)
	Du, Z; 2017 (65)	China	102	HC	48	Serum, NR	Electrochemi-luminescent Immunoassay	13.6 IU/mL	0.85 (0.77, 0.92)	0.96 (0.86, 0.99)	0.94 (0.88, 0.97)
CEA	Du, Z; 2017 (65)	China	102	HC	48	Serum, NR	Electrochemi-luminescent Immunoassay	1.84 ng/mL	0.72 (0.62, 0.81)	0.61 (0.45, 0.76)	0.61 (0.53, 0.69)
	Du, Z; 2017 (65)	China	59*	HC	48	Serum, NR	Electrochemi-luminescent Immunoassay	1.84 ng/mL	0.83 (0.71, 0.92)	0.61 (0.45, 0.76)	0.72 (0.63, 0.81)

*Du, 2018 all TB cases had Diabetes mellitus

Table S8. Biomarker signatures for adult pulmonary TB, by HIV status

Biomarkers meeting TPP criteria are indicated in bold

AUC=area under the curve, DM=diabetes mellitus, ELISA=enzyme-linked immunosorbent assay, HC= healthy controls, LTBI=latent TB infection, MSD=Meso Scale Discovery, N=sample size, ORD=other respiratory diseases, NR=not reported

Biomarker	Study ID	Country	TB cases, N	Control group	Control group, N	Sample type, condition	Testing method	Biomarker cut-off value (unit)	Sensitivity (95% CI)	Specificity (95% CI)	AUC (95% CI)
HIV-negative											
C1q, C1-INH	Lubbers, R; 2020 (74)	the Gambia	50	HC	50	Serum, Frozen	ELISA	NR	0.36 (0.23, 0.51)	0.96 (0.86, 0.99)	0.66 (0.55, 0.77)
CALCOCO2, IFITM3, SAMD9L	Garlant, H; 2022 (21)	India, United Kingdom	49	TB Contacts	209	Whole blood, Frozen	ELISA	NR	0.92 (0.82, 0.97)	0.99 (0.96, 0.99)	0.99 (0.98, 1.0)
CLEC3B, ECM1, IP10, SELL	Ndiaye, M; 2022 (22)	Madagascar	37	LTBI	24	Plasma, Frozen	Luminex	NR	0.89 (0.75, 0.96)	0.91 (0.74, 0.98)	0.93 (NR)
HO-1, MMP-1	Andrade, B; 2015 (26)	Brazil	63	LTBI	15	Plasma, Frozen	ELISA, Luminex	HO-1 > 2.397 ng/mL; MMP-1 > 3.511 ng/mL	0.95 (0.87, 0.99)	0.93 (0.68, 0.99)	0.98 (0.94, 1.0)
HO-1, MMP-1	Andrade, B; 2015 (26)	India	97	LTBI	39	Plasma, Frozen	ELISA, Luminex	HO-1 > 1.65 ng/mL; MMP-1 > 1.21 ng/mL	0.98 (0.93, 0.99)	1 (0.77, 1.0)	1.0 (1.0, 1.0)
I-309, MIG, IL-8	Chen, T; 2015 (64)	China	78	ORD	49	Serum, NR	ELISA	NR	0.56 (0.45, 0.68)	0.98 (0.89, 0.99)	NR
IP-10, CXCL13	Estevez, O; 2020 (67)	Spain	28	LTBI	27	Serum, Frozen	Luminex	NR	0.72 (0.53, 0.85)	0.88 (0.72, 0.96)	0.83 (NR)
IP-10, CXCL13, IL-7	Estevez, O; 2020 (67)	Spain	28	LTBI	27	Serum, Frozen	Luminex	NR	0.72 (0.53, 0.85)	0.68 (0.48, 0.81)	0.79 (NR)
Pla2G2A, CK-MB, HEPC	Essone, P; 2022 (66)	Gabon	26	ORD	36	Serum, Frozen	ELISA		0.74 (0.52, 0.88)	0.88 (0.74, 0.97)	0.84 (NR)
SYWC, kallistatin, C9, gelsolin, testican-2, aldolase C	De Groote, M; 2017 (33)	Peru, South Africa, Vietnam, Bangladesh, Zimbabwe, Columbia	177	ORD	226	Serum, Frozen	SomaScan	NR	0.88 (0.81, 0.92)	0.89 (0.86, 0.90)	0.94 (0.92, 0.96)
HIV-positive											

IFN- γ , IL-6	Farr, K; 2018 (68)	Uganda	155	ORD	107	Plasma, Frozen	Luminex	NR	0.90 (0.85, 0.95)	0.50 (0.47, 0.53)	0.84 (NR)
SYWC, kallistatin, C9, gelsolin, testican-2, aldolase C	De Groote, M; 2017 (33)	Peru, South Africa, Vietnam, Bangladesh, Zimbabwe, Columbia	85	ORD	81	Serum, Frozen	SomaScan	NR	0.89 (0.82, 0.92)	0.83 (0.73, 0.88)	0.93 (0.87, 0.96)
Mixed HIV-positive and negative											
Apo-AI, CFH, TTR, CRP, INF- γ , SAA, IP-10	Morris, T; 2021 (34)	South Africa, Malawi	122	ORD	127	Serum, Frozen	Luminex	NR	0.98 (0.94, 1.0)	0.12 (0.07, 0.19)	NR
CFH, IP-10, CRP, SAA, TTR	Morris, T; 2021 (34)	South Africa, Malawi	37	ORD	38	Serum, Frozen	Luminex	NR	0.79 (0.63, 0.90)	0.41 (0.25, 0.58)	NR
Fibrinogen, α -2-M, CRP, MMP-9, TTR, CFH, IFN- γ , IP-10, TNF	Morris, T; 2021 (34)	South Africa, Malawi	37	ORD	38	Serum, Frozen	Luminex	NR	0.92 (0.80, 0.98)	0.71 (0.56, 0.84)	0.84 (0.73, 0.94)
IL-6, IL-8, IL-18	Ahmad, R; 2019 (61)	Peru, South Africa, Vietnam	160	ORD and LTBI	157	Serum, Frozen	Simoa assay	NR	0.79 (0.72, 0.84)	0.68 (0.60, 0.74)	0.80 (0.76, 0.85)
IL-6, IL-8, IL-18, VEGF	Ahmad, R; 2019 (61)	Peru, South Africa, Vietnam	160	ORD and LTBI	157	Serum, Frozen	Simoa assay	NR	0.80 (0.73, 0.85)	0.65 (0.57, 0.71)	0.80 (0.75, 0.85)
SYWC, kallistatin, C9, gelsolin, testican-2, aldolase C	De Groote, M; 2017 (33)	Peru, South Africa, Vietnam, Bangladesh, Zimbabwe, Columbia	80	ORD	97	Serum, Frozen	SomaScan	NR	0.85 (0.75, 0.92)	0.89 (0.81, 0.94)	0.92 (0.87, 0.96)

Table S9: Adult pulmonary TB biomarkers and signatures, reporting only AUC

Biomarkers likely to meet TPP criteria are indicated in bold

AUC=area under the curve, DM=diabetes mellitus, ELISA=enzyme-linked immunosorbent assay, HC= healthy controls, LTBI=latent TB infection, MSD=Meso Scale Discovery,

N=sample size, ORD=other respiratory diseases, NR=not reported

Biomarker	Study ID	Country	HIV status	TB cases, N	Control group	Control group, N	Sample type, condition	Testing method	AUC (95% CI)
-----------	----------	---------	------------	-------------	---------------	------------------	------------------------	----------------	--------------

α -2-M	Morris, T; 2021 (34)	South Africa, Malawi	positive and negative	146	ORD	146	Serum, Frozen	Luminex	0.57 (0.50, 0.64)
Apo-AI	Koeppel, L; 2023 (38)	Peru, South Africa, Vietnam	positive and negative	177	ORD	302	Serum, Frozen	MSD	0.5 (NR)
	Morris, T; 2021 (34)	South Africa, Malawi	positive and negative	146	ORD	146	Serum, Frozen	Luminex	0.52 (0.45, 0.59)
Apo-CIII	Morris, T; 2021 (34)	South Africa, Malawi	positive and negative	146	ORD	146	Serum, Frozen	Luminex	0.58 (0.51, 0.64)
C1q	Lubbers, R; 2018 (73)	South Africa, Italy, the Gambia, Korea, Netherlands	negative	99	ORD	68	Serum, NR	ELISA	0.93 (0.89, 0.97)
CFH	Morris, T; 2021 (34)	South Africa, Malawi	positive and negative	146	ORD	146	Serum, Frozen	Luminex	0.70 (0.64, 0.76)
CRP	Morris, T; 2021 (34)	South Africa, Malawi	positive and negative	146	ORD	146	Serum, Frozen	Luminex	0.51 (0.43, 0.58)
CXCL1	Sampath, P; 2023b (82)	India	Negative	40 DS-TB; 40 DR-TB	LTBI	40	Plasma, Frozen	Luminex	0.85 (NR) DS-TB 0.80 (NR) DR-TB
CXCL11	Sampath, P; 2023b (82)	India	Negative	40 DR-TB	HC	40	Plasma, Frozen	Luminex	0.82 (NR)
Ferretin	Luo, Y; 2020 (75)	China	negative	66	LTBI	53	Serum, NR	Turbidimetry	0.63 (NR)
	Morris, T; 2021 (34)	South Africa, Malawi	positive and negative	146	ORD	146	Serum, Frozen	Luminex	0.57 (0.50, 0.64)
Fibrinogen	Morris, T; 2021 (34)	South Africa, Malawi	positive and negative	146	ORD	146	Serum, Frozen	Luminex	0.56 (0.49, 0.63)
HP	Morris, T; 2021 (34)	South Africa, Malawi	positive and negative	146	ORD	146	Serum, Frozen	Luminex	0.64 (0.58, 0.71)
I-309	Chen, T; 2015 (64)	China	negative	81	HC and/or ORD	162	Serum, NR	ELISA	0.90 (NR)
	Sampath, P; 2023b (82)	India	negative	40 DS-TB; 40 DR-TB	HC	40	Plasma, Frozen	Luminex	0.85 (NR) DS-TB 0.88 (NR) DR-TB
IFN- α -2	Morris, T; 2021 (34)	South Africa, Malawi	positive and negative	146	ORD	146	Serum, Frozen	Luminex	0.52 (0.45, 0.58)

IFN- γ	Morris, T; 2021 (34)	South Africa, Malawi	positive and negative	146	ORD	146	Serum, Frozen	Luminex	0.66 (0.60, 0.72)
	Sampath, P; 2023a (37)	India	negative	40 DS-TB	HC	40	Plasma, Frozen	Luminex	0.95 (NR)
	Sampath, P; 2023a (37)	India	negative	40 DR-TB	LTBI	40	Plasma, Frozen	Luminex	0.94 (NR)
IL-2	Sampath, P; 2023a (37)	India	negative	40 DS-TB; 40 DR-TB	HC	40	Plasma, Frozen	Luminex	1.0 (NR) DS-TB 1.0 (NR) DR-TB
IL-5	Sampath, P; 2023a (37)	India	negative	40 DS-TB	LTBI	40	Plasma, Frozen	Luminex	0.92 (NR)
IL-6	Sampath, P; 2023a (37)	India	negative	40 DR-TB	LTBI	40	Plasma, Frozen	Luminex	0.93 (NR)
IL-8	Chen, T; 2015 (64)	China	negative	81	HC and/or ORD	162	Serum, NR	ELISA	0.81 (NR)
IL-10	Sampath, P; 2023a (37)	India	negative	40 DS-TB; 40 DR-TB	LTBI	40	Plasma, Frozen	Luminex	0.90 (NR) DS-TB 1.0 (NR) DR-TB
IL-17A	Sampath, P; 2023a (37)	India	negative	40 DS-TB; 40 DR-TB	LTBI	40	Plasma, Frozen	Luminex	0.90 (NR) DS-TB 1.0 (NR) DR-TB
IL-1 α	Sampath, P; 2023a (37)	India	negative	40 DS-TB	LTBI	40	Plasma, Frozen	Luminex	0.97 (NR)
IL-1RA	Morris, T; 2021 (34)	South Africa, Malawi	positive and negative	146	ORD	146	Serum, Frozen	Luminex	0.51 (0.44, 0.58)
IP-10	Koeppel, L; 2023 (38)	Peru, South Africa, Vietnam	positive and negative	177	ORD	302	Serum, Frozen	MSD	0.79 (NR)
	Morris, T; 2021 (34)	South Africa, Malawi	positive and negative	146	ORD	146	Serum, Frozen	Luminex	0.66 (0.60, 0.73)
	Sampath, P; 2023b (82)	India	negative	40 DS-TB; 40 DR-TB	LTBI	40	Plasma, Frozen	Luminex	0.94 (NR) DS-TB 0.98 (NR) DR-TB
MCP-1	Sampath, P; 2023b (82)	India	negative	40 DR-TB	HC	40	Plasma, Frozen	Luminex	0.88 (NR)
MICA	Jiang, X; 2012 (70)	China	negative	55	HC	141	Serum, NR	ELISA	0.77 (NR)
MIG	Chen, T; 2015 (64)	China	negative	81	HC and/or ORD	162	Serum, NR	ELISA	0.87 (NR)

	Koeppel, L; 2023 (38)	Peru, South Africa, Vietnam	positive and negative	177	ORD	302	Serum, Frozen	MSD	0.83 (NR)
	Sampath, P; 2023b (82)	India	negative	40 DS-TB; 40 DR-TB	LTBI	40	Plasma, Frozen	Luminex	0.92 (NR) DS-TB 0.98 (NR) DR-TB
MMP-2	Morris, T; 2021 (34)	South Africa, Malawi	positive and negative	146	ORD	146	Serum, Frozen	Luminex	0.52 (0.45, 0.58)
MMP-9	Morris, T; 2021 (34)	South Africa, Malawi	positive and negative	146	ORD	146	Serum, Frozen	Luminex	0.53 (0.47, 0.60)
PCT	Morris, T; 2021 (34)	South Africa, Malawi	positive and negative	146	ORD	146	Serum, Frozen	Luminex	0.52 (0.45, 0.59)
SAA	Morris, T; 2021 (34)	South Africa, Malawi	positive and negative	146	ORD	146	Serum, Frozen	Luminex	0.65 (0.58, 0.71)
SAP	Morris, T; 2021 (34)	South Africa, Malawi	positive and negative	146	ORD	146	Serum, Frozen	Luminex	0.64 (0.57, 0.71)
SYWC	Koeppel, L; 2023 (38)	Peru, South Africa, Vietnam	positive and negative	177	ORD	302	Serum, Frozen	MSD	0.86 (NR)
TfR	Luo, Y; 2020 (75)	China	negative	66	LTBI	53	Serum, NR	Turbidimetry	0.66 (NR)
TGF- α	Morris, T; 2021 (34)	South Africa, Malawi	positive and negative	146	ORD	146	Serum, Frozen	Luminex	0.55 (0.49, 0.62)
TNF	Morris, T; 2021 (34)	South Africa, Malawi	positive and negative	146	ORD	146	Serum, Frozen	Luminex	0.53 (0.46, 0.59)
	Namuganga, AR; 2017 (79)	Uganda	positive and negative	39	ORD	39	Serum, Frozen	Luminex	0.63 (NR)
	Sampath, P; 2023a (37)	India	negative	40 DR-TB	LTBI	40	Plasma, Frozen	Luminex	0.93 (NR)
TPA	Morris, T; 2021 (34)	South Africa, Malawi	positive and negative	146	ORD	146	Serum, Frozen	Luminex	0.57 (0.50, 0.64)
Transferrin	Luo, Y; 2020 (75)	China	negative	66	LTBI	53	Serum, NR	Turbidimetry	0.71 (NR)
TTR	Morris, T; 2021 (34)	South Africa, Malawi	positive and negative	146	ORD	146	Serum, Frozen	Luminex	0.61 (0.55, 0.68)

VEGF	Morris, T; 2021 (34)	South Africa, Malawi	positive and negative	146	ORD	146	Serum, Frozen	Luminex	0.64 (0.57, 0.71)
Signatures									
CD14, SEPP1, SELL, TNXB, LUM, PEPD, QSOX1, COMP, Apo CI, GP1BA	Halliday, A; 2021 (69)	United Kingdom	negative	60	ORD	84	Serum, Frozen	Mass spectrometry	0.70 (0.62, 0.79)
I-309, SYWC, kallistatin	Koeppel, L; 2023 (38)	Peru, South Africa, Vietnam	positive and negative	177	ORD	302	Serum, Frozen	MSD	0.90 (NR)
S100A9, SOD3, MMP-9	Halliday, A; 2021 (69)	United Kingdom	negative	60	ORD	84	Serum, Frozen	Mass spectrometry	0.70 (0.61, 0.79)
SYWC, I-309	Koeppel, L; 2023 (38)	Peru, South Africa, Vietnam	positive	46	ORD	240	Serum, Frozen	MSD	0.91 (NR)
SYWC, kallistatin	Koeppel, L; 2023 (38)	Peru, South Africa, Vietnam	positive and negative	177	ORD	302	Serum, Frozen	MSD	0.88 (NR)

Table S10: Composite reference standards for adult EPTB and childhood TB

Study ID	Proportion of TB patients positive on MRS
EPTB	
Abhimanyu 2016 (88)	26% positive on culture
Andrade, B; 2013 (25)	All positive on AFB smear or culture
Chen, X; 2023 (36)	53% positive on Xpert, 43% positive on NAAT, 3% positive on culture
de Larrea, C; 2011 (89)	70% positive on culture
Garlant, H; 2022 (21)	All positive on AFB smear and culture
Goyal, N; 2016 (44)	13% positive on culture
He, X; 2020 (90)	1.37% positive on culture
Kathamuthu, G; 2020 (28)	unclear
Kim, J; 2016 (91)	46% positive on culture or AFB smear or PCR
Lin, L; 2021 (41)	unclear
Liu, Q; 2019 (92)	28.6% smear or culture positive in sputum; 10.7% AFB smear or culture positive in pleural effusion
Lou, C; 2022 (93)	All positive on AFB or culture
Mann, T; 2021 (43)	69% positive on culture or Xpert
Onur, S; 2015 (42)	unclear
Wang, J; 2022 (94)	All positive on AFB or culture
Childhood TB	
Kumar, NP; 2021b (46)	All positive on culture, Xpert or AFB smear
Kashyap, B; 2020 (45)	55% positive on AFB smear, culture or NAAT
Manyelo, C; 2019 (95)	6.4% positive on AFB smear, culture or NAAT

Table S11: Adult Extra-pulmonary TB biomarkers and signatures

Biomarkers meeting TPP criteria are indicated in bold

AUC=area under the curve, ELISA=enzyme-linked immunosorbent assay, HC= healthy controls, LTBI=latent TB infection, N=sample size, ORD=other respiratory diseases, NR=not reported

Biomarker	Study ID	Country	Site of disease	HIV-status	TB cases, N	Control group	Control group, N	Sample type	Testing method	Biomarker cut-off value (unit)	Sensitivity (95% CI)	Specificity (95% CI)	AUC (95% CI)
ADA	He, X; 2020 (90)	China	Abdominal	negative	73	OD + HC	135	Serum, NR	Peroxidase method	15.31 IU/mL	0.74 (0.62, 0.84)	0.75 (0.67, 0.82)	0.73 (0.65, 0.80)
Apo-AI	Mann, T; 2021 (43)	South Africa	Bone	positive and negative	26	OD	17	Serum, Frozen	Luminex	NR	0.71 (0.44, 0.90)	0.54 (0.33, 0.73)	0.61 (0.43, 0.80)
Apo-CII	Chen, X; 2023 (36)	China	Bone	negative	30	OD	30	Serum, Frozen	ELISA	7.788 µg/mL	0.97 (0.83, 0.99)	0.93 (0.78, 0.99)	NR
Apo-E	Chen, X; 2023 (36)	China	Bone	negative	30	OD	30	Serum, Frozen	ELISA	49.46 µg/mL	0.60 (0.42, 0.75)	0.57 (0.39, 0.73)	NR
CA-125	He, X; 2020 (90)	China	Abdominal	negative	73	OD + HC	135	Serum, NR	Electrochemiluminescent Immunoassay	30.34 IU/mL	0.85 (0.75, 0.92)	0.60 (0.51, 0.68)	0.72 (0.65, 0.79)
CALCOCO2	Garlant, H; 2022 (21)	India, United Kingdom	NR	negative	82	LTBI	111	Whole blood, Frozen	ELISA	990.7 ng/mL	0.90 (0.83, 0.95)	0.40 (0.32, 0.49)	0.72 (0.66, 0.78)
CD163	Liu, Q; 2019 (92)	China	Pleural	negative	28	OD	21	Plasma, Frozen	ELISA	934.7 ng/mL	0.77 (0.59, 0.92)	0.80 (0.58, 0.95)	0.81 (NR)
CD52	Garlant, H; 2022 (21)	India, United Kingdom	NR	negative	82	LTBI	111	Whole blood, Frozen	ELISA	964.8 ng/mL	0.90 (0.83, 0.95)	0.14 (0.09, 0.21)	0.59 (0.52, 0.66)
CFD	Mann, T; 2021 (43)	South Africa	Bone	positive and negative	26	OD	17	Serum, Frozen	Luminex	NR	0.59 (0.33, 0.82)	0.65 (0.44, 0.83)	0.62 (0.44, 0.79)
CFH	Mann, T; 2021 (43)	South Africa	Bone	positive and negative	26	OD	17	Serum, Frozen	Luminex	NR	0.53 (0.23, 0.72)	0.62 (0.20, 0.59)	0.51 (0.33, 0.70)
CFHR2	Chen, X; 2023 (36)	China	Bone	negative	30	OD	30	Serum, Frozen	ELISA	86.90 µg/ml	0.80 (0.63, 0.90)	0.73 (0.56, 0.86)	0.86 (0.77, 0.95)
CFHR3	Chen, X; 2023 (36)	China	Bone	negative	30	OD	30	Serum, Frozen	ELISA	138.25 µg/ml	0.77 (0.59, 0.88)	0.77 (0.59, 0.88)	0.82 (0.70, 0.93)
CFHR5	Chen, X; 2023 (36)	China	Bone	negative	30	OD	30	Serum, Frozen	ELISA	2.67 µg/ml	0.97 (0.83, 0.99)	0.97 (0.83, 0.99)	0.99 (0.99, 1.0)

CRP	Andrade, B; 2013 (25)	India	Pleural, Lymph node	negative	35	PTB	97	Plasma, NR	Luminex	NR	0.75 (0.65, 0.83)	0.39 (0.23, 0.58)	0.62 (0.52, 0.72)
	He, X; 2020 (90)	China	Abdominal	negative	73	OD + HC	135	Serum, NR	Turbidimetry	43.54 IU/mL	0.68 (0.57, 0.79)	0.85 (0.78, 0.91)	0.80 (0.74, 0.87)
	Lin, L; 2021 (41)	China	Pleural	negative	28	OD	16	Serum, NR	Turbidimetry	≤ 77.1 mg/L	0.75 (0.55, 0.89)	0.88 (0.62, 0.98)	0.84 (0.70, 0.93)
	Lin, L; 2021 (41)	China	Pleural	negative	28	OD	7	Serum, NR	Turbidimetry	> 19.3 mg/L	0.75 (0.55, 0.89)	1 (0.59, 1.0)	0.91 (0.76, 0.98)
	Mann, T; 2021 (43)	South Africa	Bone	positive and negative	26	OD	17	Serum, Frozen	Luminex	79091 ng/mL	0.89 (0.70, 0.98)	0.94 (0.71, 0.99)	0.95 (0.87, 1.0)
	Kim, J; 2016 (91)	South Korea	Meningeal	negative	26	OD	70	Serum, NR	NR	NR	NR	NR	0.78 (0.69, 0.86)
	Wang, J; 2022 (94)	China	Bone	NR	570	OD	147	Serum, NR	NR	NR	NR	NR	0.73 (0.67, 0.79)
Ferritin	Mann, T; 2021 (43)	South Africa	Bone	positive and negative	26	OD	17	Serum, Frozen	Luminex	NR	0.69 (0.48, 0.86)	0.82 (0.82, 0.96)	0.78 (0.64, 0.92)
Fibrinogen	Mann, T; 2021 (43)	South Africa	Bone	positive and negative	26	OD	17	Serum, Frozen	Luminex	3696 ng/mL	1 (0.89, 1.0)	0.94 (0.71, 0.99)	0.99 (0.96, 1.0)
GBP1	Garlant, H; 2022 (21)	India, United Kingdom	NR	negative	82	LTBI	111	Whole blood, Frozen	ELISA	1394 ng/mL	0.90 (0.83, 0.95)	0.36 (0.28, 0.45)	0.78 (0.72, 0.84)
GDF-15	Mann, T; 2021 (43)	South Africa	Bone	positive and negative	26	OD	17	Serum, Frozen	Luminex	NR	0.62 (0.41, 0.80)	0.71 (0.44, 0.90)	0.64 (0.48, 0.81)
HO-1	Andrade, B; 2013 (25)	India	Pleural, Lymph nodes	negative	35	PTB	97	Plasma, NR	ELISA	NR	0.74 (0.64, 0.83)	0.53 (0.34, 0.72)	0.73 (0.65, 0.82)
I-309	Mann, T; 2021 (43)	South Africa	Bone	positive and negative	26	OD	17	Serum, Frozen	Luminex	NR	0.73 (0.52, 0.88)	0.65 (0.38, 0.86)	0.74 (0.59, 0.90)
ICAM-1	Mann, T; 2021 (43)	South Africa	Bone	positive and negative	26	OD	17	Serum, Frozen	Luminex	NR	0.58 (0.37, 0.77)	0.71 (0.44, 0.90)	0.60 (0.41, 0.78)

IFIT3	Garlant, H; 2022 (21)	India, United Kingdom	NR	negative	82	LTBI	111	Whole blood, Frozen	ELISA	14.43 ng/mL	0.90 (0.83, 0.95)	0.89 (0.83, 0.94)	0.94 (0.90, 0.97)
IFITM3	Garlant, H; 2022 (21)	India, United Kingdom	NR	negative	82	LTBI	111	Whole blood, Frozen	ELISA	1303 ng/mL	0.90 (0.83, 0.95)	0.71 (0.62, 0.78)	0.91 (0.88, 0.95)
IFN- γ	Abhimanyu, BM; 2016 (88)	India	Lymph node	negative	50	PTB	84	Serum, Frozen	ELISA	NR	NR	NR	0.49 (0.39, 0.59)
	de Larrea, C; 2011 (89)	Venezuela	Pleural	negative	20	OD	40	Serum, NR	ELISA	0.162 pg/mL	0.65 (0.44, 0.90)	0.55 (0.40, 0.70)	NR
	Goyal, N; 2016 (44)	India	Pleural, lymph node, CSF, urine, ascitic fluid	negative	69	HC	69	Serum, Frozen	ELISA	11.4 pg/mL	0.99 (0.92, 0.99)	0.97 (0.90, 0.99)	0.99 (0.97, 1.0)
	Mann, T; 2021 (43)	South Africa	Bone	positive and negative	26	OD	17	Serum, Frozen	Luminex	8.56 pg/mL	0.92 (0.75, 0.99)	0.94 (0.71, 0.99)	0.92 (0.83, 1.0)
IL-1 β	Abhimanyu, BM; 2016 (88)	India	Lymph node	negative	50	PTB	84	Serum, Frozen	ELISA	NR	NR	NR	0.55 (0.44, 0.65)
IL-1RA	Abhimanyu, BM; 2016 (88)	India	Lymph node	negative	50	PTB	84	Serum, Frozen	ELISA	NR	NR	NR	0.43 (0.34, 0.52)
IL-2	Abhimanyu, BM; 2016 (88)	India	Lymph node	negative	50	PTB	84	Serum, Frozen	ELISA	NR	NR	NR	0.58 (0.48, 0.68)
	Goyal, N; 2016 (44)	India	Pleural, lymph node, CSF, urine, ascitic fluid	negative	69	HC	89	Serum, Frozen	ELISA	NR	NR	NR	0.50 (0.42, 0.59)
IL-2R	Onur, S; 2015 (42)	Turkey	Pleural	negative	52	OD	68	Serum, Frozen	ELISA	> 0.6 ng/mL	0.83 (0.69, 0.92)	0.53 (0.40, 0.65)	NR
IL-4	Abhimanyu, BM; 2016 (88)	India	Lymph node	negative	50	PTB	84	Serum, Frozen	ELISA	NR	NR	NR	0.38 (0.28, 0.47)
IL-6	Abhimanyu, BM; 2016 (88)	India	Lymph node	negative	50	PTB	84	Serum, Frozen	ELISA	NR	NR	NR	0.58 (0.49, 0.67)
IL-8	Abhimanyu, BM; 2016 (88)	India	Lymph node	negative	50	PTB	84	Serum, Frozen	ELISA	NR	NR	NR	0.79 (0.72, 0.86)

	Mann, T; 2021 (43)	South Africa	Bone	positive and negative	26	OD	17	Serum, Frozen	Luminex	NR	0.65 (0.38, 0.86)	0.62 (0.41, 0.80)	0.59 (0.41, 0.78)
IL-10	Abhimanyu, BM; 2016 (88)	India	Lymph node	negative	50	PTB	84	Serum, Frozen	ELISA	NR	NR	NR	0.74 (0.64, 0.85)
	Mann, T; 2021 (43)	South Africa	Bone	positive and negative	26	OD	17	Serum, Frozen	Luminex	NR	0.58 (0.37, 0.77)	0.77 (0.50, 0.93)	0.68 (0.53, 0.82)
IL-12	Abhimanyu, BM; 2016 (88)	India	Lymph node	negative	50	PTB	84	Serum, Frozen	ELISA	NR	NR	NR	0.76 (0.69, 0.83)
IL-12p40	de Larrea, C; 2011 (89)	Venezuela	Pleural	negative	20	OD	40	Serum, NR	ELISA	0.497 pg/mL	0.95 (0.86, 1.05)	0.50 (0.35, 0.66)	NR
	Onur, S; 2015 (42)	Turkey	Pleural	negative	52	OD	68	Serum, Frozen	ELISA	> 42 pg/mL	0.81 (0.68, 0.90)	0.40 (0.28, 0.52)	NR
IL-18	Abhimanyu, BM; 2016 (88)	India	Lymph node	negative	50	PTB	84	Serum, Frozen	ELISA	NR	NR	NR	0.58 (0.47, 0.69)
IP-10	Mann, T; 2021 (43)	South Africa	Bone	positive and negative	26	OD	17	Serum, Frozen	Luminex	NR	0.62 (0.41, 0.79)	0.71 (0.44, 0.90)	0.63 (0.46, 0.80)
ITIH2	Chen, X; 2023 (36)	China	Bone	negative	30	OD	30	Serum, Frozen	ELISA	99.85 ng/mL	0.73 (0.56, 0.86)	0.67 (0.49, 0.81)	0.72 (0.58, 0.85)
KNG1	Chen, X; 2023 (36)	China	Bone	negative	30	OD	30	Serum, Frozen	ELISA	157.32 µg/ml	0.63 (0.46, 0.78)	0.60 (0.42, 0.75)	NR
LBP	Lou, C; 2022 (93)	China	Bone	negative	50	HC	30	Serum, Frozen	ELISA	NR	NR	NR	0.88 (NR)
LTA	Abhimanyu, BM; 2016 (88)	India	Lymph node	negative	50	PTB	84	Serum, Frozen	ELISA	NR	NR	NR	0.61 (0.52, 0.69)
MIG	Mann, T; 2021 (43)	South Africa	Bone	positive and negative	26	OD	17	Serum, Frozen	Luminex	NR	0.58 (0.37, 0.77)	0.88 (0.64, 0.99)	0.62 (0.44, 0.79)
MMP-1	Kathamuthu, G; 2020 (28)	India	Cervical lymphadenopathy	negative	44	LTBI	44	Plasma, NR	Luminex	NR	0.59 (0.43, 0.74)	0.70 (0.55, 0.83)	0.68 (NR)

MMP-12	Kathamuthu, G; 2020 (28)	India	Cervical lymphadenopathy	negative	44	LTBI	44	Plasma, NR	Luminex	NR	0.52 (0.37, 0.68)	0.55 (0.39, 0.69)	0.50 (NR)
MMP-13	Kathamuthu, G; 2020 (28)	India	Cervical lymphadenopathy	negative	44	LTBI	44	Plasma, NR	Luminex	NR	1.0 (0.920, 1.0)	1.0 (0.920, 1.0)	1.0 (NR)
MMP-2	Kathamuthu, G; 2020 (28)	India	Cervical lymphadenopathy	negative	44	LTBI	44	Plasma, NR	Luminex	NR	0.61 (0.46, 0.76)	0.65 (0.50, 0.79)	0.62 (NR)
MMP-3	Kathamuthu, G; 2020 (28)	India	Cervical lymphadenopathy	negative	44	LTBI	44	Plasma, NR	Luminex	NR	0.57 (0.41, 0.72)	0.55 (0.39, 0.69)	0.56 (NR)
MMP-7	Kathamuthu, G; 2020 (28)	India	Cervical lymphadenopathy	negative	44	LTBI	44	Plasma, NR	Luminex	NR	0.75 (0.60, 0.87)	0.70 (0.55, 0.83)	0.80 (NR)
MMP-8	Kathamuthu, G; 2020 (28)	India	Cervical lymphadenopathy	negative	44	LTBI	44	Plasma, NR	Luminex	NR	0.66 (0.50, 0.79)	0.55 (0.39, 0.69)	0.66 (NR)
MMP-9	Kathamuthu, G; 2020 (28)	India	Cervical lymphadenopathy	negative	44	LTBI	44	Plasma, NR	Luminex	NR	0.50 (0.35, 0.65)	0.55 (0.39, 0.69)	0.59 (NR)
MPO	Mann, T; 2021 (43)	South Africa	Bone	positive and negative	26	OD	17	Serum, Frozen	Luminex	NR	0.58 (0.37, 0.77)	0.76 (0.44, 0.90)	0.60 (0.43, 0.80)
NCAM-1	Mann, T; 2021 (43)	South Africa	Bone	positive and negative	26	OD	17	Serum, Frozen	Luminex	299421 pg/mL	0.77 (0.56, 0.91)	0.88 (0.64, 0.98)	0.88 (0.78, 0.98)
OPG	Mann, T; 2021 (43)	South Africa	Bone	positive and negative	26	OD	17	Serum, Frozen	Luminex	NR	0.54 (0.27, 0.67)	0.65 (0.14, 0.62)	0.56 (0.38, 0.74)
PCT	Kim, J; 2016 (91)	South Korea	Meningeal	negative	26	OD	70	Serum, NR	Electrochemiluminescent Immunoassay	≤ 1.27 ng/mL	0.96 (0.80, 0.99)	0.63 (0.51, 0.74)	0.84 (0.75, 0.90)
PD-L1	Garlant, H; 2022 (21)	India, United Kingdom	NR	negative	49	LTBI	111	Whole blood, Frozen	ELISA	0.5756 ng/mL	1.0 (0.96, 1.0)	1.0 (0.97, 1.0)	1.0 (1.0, 1.0)
SAA	Andrade, B; 2013 (25)	India	Pleural, Lymph node	negative	35	PTB	97	Plasma, NR	Luminex	NR	0.79 (0.69, 0.87)	0.39 (0.23, 0.58)	0.66 (0.56, 0.77)

SAA-4	Chen, X; 2023 (36)	China	Bone	negative	30	OD	30	Serum, Frozen	ELISA	2.197 µg/ml	0.73 (0.56, 0.86)	0.70 (0.52, 0.83)	NR
SAMD9L	Garlant, H; 2022 (21)	India, United Kingdom	NR	negative	82	LTBI	111	Whole blood, Frozen	ELISA	1439 ng/mL	0.90 (0.83, 0.95)	0.88 (0.82, 0.93)	0.96 (0.94, 0.98)
SNX10	Garlant, H; 2022 (21)	India, United Kingdom	NR	negative	82	LTBI	111	Whole blood, Frozen	ELISA	1739 ng/mL	0.90 (0.83, 0.95)	0.37 (0.30, 0.46)	0.81 (0.76, 0.87)
TIMP-1	Kathamuthu, G; 2020 (28)	India	Cervical lymphadenopathy	negative	44	LTBI	44	Plasma, NR	Luminex	NR	0.57 (0.41, 0.72)	0.64 (0.48, 0.78)	0.61 (NR)
TIMP-2	Kathamuthu, G; 2020 (28)	India	Cervical lymphadenopathy	negative	44	LTBI	44	Plasma, NR	Luminex	NR	0.82 (0.67, 0.92)	0.91 (0.78, 0.97)	0.86 (NR)
TIMP-3	Kathamuthu, G; 2020 (28)	India	Cervical lymphadenopathy	negative	44	LTBI	44	Plasma, NR	Luminex	NR	0.65 (0.48, 0.77)	0.82 (0.67, 0.92)	0.62 (NR)
TIMP-4	Kathamuthu, G; 2020 (28)	India	Cervical lymphadenopathy	negative	44	LTBI	44	Plasma, NR	Luminex	NR	0.62 (0.46, 0.76)	0.73 (0.57, 0.85)	0.69 (NR)
TMEM49	Garlant, H; 2022 (21)	India, United Kingdom	NR	negative	82	LTBI	111	Whole blood, Frozen	ELISA	266.3 ng/mL	0.90 (0.83, 0.95)	0.0 (0.0, 0.3)	0.42 (0.35, 0.50)
TNF	Abhimanyu, BM; 2016 (88)	India	Lymph node	negative	50	PTB	84	Serum, Frozen	ELISA	NR	NR	NR	0.38 (0.28, 0.48)
VCAM-1	Mann, T; 2021 (43)	South Africa	Bone	positive and negative	26	OD	17	Serum, Frozen	Luminex	NR	0.54 (0.33, 0.73)	0.71 (0.44, 0.90)	0.61 (0.44, 0.79)
VEGF	Mann, T; 2021 (43)	South Africa	Bone	positive and negative	26	OD	17	Serum, Frozen	Luminex	NR	0.50 (0.30, 0.70)	0.88 (0.64, 0.99)	0.63 (0.46, 0.80)
Signatures													
CFHR2, CFHR3	Chen, X; 2023 (36)	China	Bone	negative	30	OD	30	Serum, Frozen	ELISA	NR	0.90 (0.74, 0.97)	0.88 (0.70, 0.95)	0.94 (0.87, 0.98)
CRP, NCAM, Ferritin, IL-8, GDF-15	Mann, T; 2021 (43)	South Africa	Bone	positive and negative	26	OD	17	Serum, Frozen	Luminex	NR	1 (0.89, 1.0)	1 (0.84, 1.0)	1 (1.0, 1.0)

Table S11: Childhood TB biomarkers

Biomarkers meeting TPP criteria are indicated in bold

AUC=area under the curve, ELISA=enzyme-linked immunosorbent assay, HC= healthy controls, LTBI=latent TB infection, N=sample size, ORD=other respiratory diseases, NR=not reported

Biomarker	Study ID	Country	Site of disease	TB cases, N	Control group	Control group, N	Sample type	Testing method	Biomarker cut-off, unit	Sensitivity (95% CI)	Specificity (95% CI)	AUC (95%)
MRS, HIV-negative												
IFN- γ	Kumar, NP; 2021a (40)	India	PTB	36	ORD	46	Plasma, Frozen	Luminex	NR	0.63 (0.46, 0.79)	0.73 (0.59, 0.86)	0.78 (NR)
IL-2	Kumar, NP; 2021a (40)	India	PTB	36	ORD	46	Plasma, Frozen	Luminex	NR	0.69 (0.52, 0.84)	0.60 (0.45, 0.75)	0.70 (NR)
IL-17A	Kumar, NP; 2021a (40)	India	PTB	36	ORD	46	Plasma, Frozen	Luminex	NR	1.0 (0.90, 1.0)	0.91 (0.79, 0.98)	0.98 (NR)
TNF	Kumar, NP; 2021a (40)	India	PTB	36	ORD	46	Plasma, Frozen	Luminex	NR	0.97 (0.86, 0.99)	0.90 (0.76, 0.96)	0.98 (NR)
MRS, HIV-mixed												
CRP	Jaganath, D; 2022 (39)	Uganda	PTB	62	ORD	270	Whole blood, Fresh	POC assay	10 mg/L	0.50 (0.37, 0.63)	0.66 (0.60, 0.71)	0.61 (0.53, 0.69)
CRP	Jaganath, D; 2022 (39)	Uganda	PTB	62	ORD	270	Whole blood, Fresh	POC assay	5 mg/L	0.57 (0.43, 0.69)	0.57 (0.51, 0.63)	0.61 (0.53, 0.69)
CRS, HIV-negative												
A1At	Manyelo, C; 2019 (95)	South Africa	EPTB; Meningeal	23	OD	24	Serum, Frozen	Luminex	>17908.0 ng/mL	0.61 (0.39, 0.80)	0.58 (0.37, 0.78)	0.59 (0.42, 0.76)
ADMTS13	Manyelo, C; 2019 (95)	South Africa	EPTB; Meningeal	23	OD	24	Serum, Frozen	Luminex	< 962.3 ng/mL	0.61 (0.36, 0.80)	0.46 (0.26, 0.67)	0.52 (0.35, 0.68)
Apo AI	Manyelo, C; 2019 (95)	South Africa	EPTB; Meningeal	23	OD	24	Serum, Frozen	Luminex	> 287512.0 ng/mL	0.65 (0.43, 0.84)	0.54 (0.33, 0.75)	0.62 (0.46, 0.78)
Apo CIII	Manyelo, C; 2019 (95)	South Africa	EPTB; Meningeal	23	OD	24	Serum, Frozen	Luminex	> 114926.0 ng/mL	0.87 (0.66, 0.97)	0.63 (0.41, 0.81)	0.71 (0.55, 0.87)
A β 40	Manyelo, C; 2019 (95)	South Africa	EPTB; Meningeal	23	OD	24	Serum, Frozen	Luminex	< 72.1 pg/mL	1.0 (0.85, 1.0)	0.08 (0.01, 0.27)	0.54 (0.37, 0.71)
A β 42	Manyelo, C; 2019 (95)	South Africa	EPTB; Meningeal	23	OD	24	Serum, Frozen	Luminex	< 278.4 pg/mL	0.74 (0.52, 0.89)	0.42 (0.22, 0.63)	0.58 (0.45, 0.72)
BDNF	Manyelo, C; 2019 (95)	South Africa	EPTB; Meningeal	23	OD	24	Serum, Frozen	Luminex	< 17211.0 pg/mL	0.65 (0.43, 0.84)	0.54 (0.33, 0.75)	0.55 (0.38, 0.72)
C2	Manyelo, C; 2019 (95)	South Africa	EPTB; Meningeal	23	OD	24	Serum, Frozen	Luminex	< 15990.0 ng/mL	0.52 (0.31, 0.73)	0.50 (0.29, 0.71)	0.53 (0.36, 0.70)

C3	Manyelo, C; 2019 (95)	South Africa	EPTB; Meningeal	23	OD	24	Serum, Frozen	Luminex	> 32056.0 pg/mL	0.91 (0.72, 0.98)	0.42 (0.22, 0.63)	0.40 (0.23, 0.57)
C4	Manyelo, C; 2019 (95)	South Africa	EPTB; Meningeal	23	OD	24	Serum, Frozen	Luminex	> 89484.0 ng/mL	0.78 (0.56, 0.93)	0.54 (0.33, 0.75)	0.65 (0.49, 0.81)
C4b	Manyelo, C; 2019 (95)	South Africa	EPTB; Meningeal	23	OD	24	Serum, Frozen	Luminex	> 26285.0 ng/mL	0.69 (0.47, 0.87)	0.54 (0.33, 0.75)	0.66 (0.51, 0.82)
C5	Manyelo, C; 2019 (95)	South Africa	EPTB; Meningeal	23	OD	24	Serum, Frozen	Luminex	> 46742.0 ng/mL	0.69 (0.47, 0.87)	0.75 (0.53, 0.90)	0.73 (0.58, 0.88)
C5a	Manyelo, C; 2019 (95)	South Africa	EPTB; Meningeal	23	OD	24	Serum, Frozen	Luminex	> 2660.0 pg/mL	0.52 (0.31, 0.73)	0.67 (0.45, 0.84)	0.58 (0.41, 0.75)
C9	Manyelo, C; 2019 (95)	South Africa	EPTB; Meningeal	23	OD	24	Serum, Frozen	Luminex	< 3502.0 ng/mL	0.65 (0.43, 0.84)	0.58 (0.37, 0.78)	0.56 (0.39, 0.73)
CAMP	Manyelo, C; 2019 (95)	South Africa	EPTB; Meningeal	23	OD	24	Serum, Frozen	ELISA	> 0.4	0.61 (0.39, 0.80)	0.35 (0.16, 0.57)	0.49 (0.31, 0.66)
Cathepsin D	Manyelo, C; 2019 (95)	South Africa	EPTB; Meningeal	23	OD	24	Serum, Frozen	Luminex	< 459422.0 pg/mL	0.61 (0.39, 0.80)	0.54 (0.33, 0.75)	0.57 (0.40, 0.74)
CD40L	Manyelo, C; 2019 (95)	South Africa	EPTB; Meningeal	23	OD	24	Serum, Frozen	Luminex	> 11151.0 pg/mL	0.65 (0.43, 0.84)	0.54 (0.33, 0.75)	0.56 (0.39, 0.73)
CFD	Manyelo, C; 2019 (95)	South Africa	EPTB; Meningeal	23	OD	24	Serum, Frozen	Luminex	< 2393.0 ng/mL	0.78 (0.56, 0.93)	0.79 (0.58, 0.93)	0.75 (0.59, 0.90)
CFH	Manyelo, C; 2019 (95)	South Africa	EPTB; Meningeal	23	OD	24	Serum, Frozen	Luminex	> 350185.0 ng/mL	0.87 (0.66, 0.97)	0.67 (0.45, 0.84)	0.72 (0.57, 0.87)
CFI	Manyelo, C; 2019 (95)	South Africa	EPTB; Meningeal	23	OD	24	Serum, Frozen	Luminex	> 57835.0 ng/mL	0.65 (0.43, 0.84)	0.63 (0.41, 0.81)	0.62 (0.45, 0.78)
CRP	Kashyap, B; 2020 (45)	India	PTB and EPTB; Pleural, Abdominal, Bone, Meningeal, empyema, lymphadenopathy, psoas abscess	60	HC	30	Serum, Frozen	ELISA	6.32 mg/L	0.97 (0.89, 0.99)	0.90 (0.74, 0.98)	0.99 (0.97, 1.00)
	Manyelo, C; 2019 (95)	South Africa	EPTB; Meningeal	23	OD	24	Serum, Frozen	Luminex	> 80721.0 ng/mL	0.87 (0.66, 0.97)	0.33 (0.16, 0.55)	0.56 (0.43, 0.69)
CXCL1	Kumar, NP; 2021b (46)	India	PTB	44	ORD	76	Plasma, Frozen	Luminex	NR	1.0 (0.92, 1.0)	0.93 (0.85, 0.98)	0.99 (0.99, 1.0)

D-dimer	Manyelo, C; 2019 (95)	South Africa	EPTB; Meningeal	23	OD	24	Serum, Frozen	Luminex	< 9451.0 ng/mL	0.52 (0.31, 0.73)	0.50 (0.29, 0.71)	0.55 (0.38, 0.72)
Ferritin	Manyelo, C; 2019 (95)	South Africa	EPTB; Meningeal	23	OD	24	Serum, Frozen	Luminex	< 56314.0 pg/mL	0.57 (0.35, 0.77)	0.58 (0.37, 0.78)	0.53 (0.36, 0.70)
G-CSF	Manyelo, C; 2019 (95)	South Africa	EPTB; Meningeal	23	OD	24	Serum, Frozen	Luminex	< 76.0 pg/mL	0.65 (0.43, 0.84)	0.71 (0.49, 0.87)	0.72 (0.57, 0.86)
GDF-15	Manyelo, C; 2019 (95)	South Africa	EPTB; Meningeal	23	OD	24	Serum, Frozen	Luminex	< 1.1 ng/mL	0.61 (0.39, 0.80)	0.54 (0.33, 0.75)	0.56 (0.39, 0.73)
GDNF	Manyelo, C; 2019 (95)	South Africa	EPTB; Meningeal	23	OD	24	Serum, Frozen	Luminex	< 140.4 pg/mL	0.52 (0.31, 0.73)	0.42 (0.22, 0.63)	0.51 (0.34, 0.67)
GM-CSF	Manyelo, C; 2019 (95)	South Africa	EPTB; Meningeal	23	OD	24	Serum, Frozen	Luminex	< 9.3 pg/mL	1.0 (0.85, 1.0)	0.17 (0.05, 0.37)	0.57 (0.40, 0.73)
I-309	Kumar, NP; 2021b (46)	India	PTB	44	ORD	76	Plasma, Frozen	Luminex	20.99 pg/mL	0.98 (0.88, 0.99)	0.99 (0.93, 1.0)	0.99 (0.98, 1.0)
	Manyelo, C; 2019 (95)	South Africa	EPTB; Meningeal	23	OD	24	Serum, Frozen	Luminex	< 15.2 pg/mL	0.52 (0.31, 0.73)	0.50 (0.29, 0.71)	0.52 (0.35, 0.69)
ICAM-1	Manyelo, C; 2019 (95)	South Africa	EPTB; Meningeal	23	OD	24	Serum, Frozen	Luminex	< 224039.0 pg/mL	0.57 (0.35, 0.77)	0.50 (0.29, 0.71)	0.57 (0.40, 0.72)
IFN- γ	Manyelo, C; 2019 (95)	South Africa	EPTB; Meningeal	23	OD	24	Serum, Frozen	Luminex	< 61.5 pg/mL	0.87 (0.66, 0.92)	0.21 (0.07, 0.42)	0.51 (0.39, 0.63)
IL-1 β	Manyelo, C; 2019 (95)	South Africa	EPTB; Meningeal	23	OD	24	Serum, Frozen	Luminex	< 8.3 pg/mL	0.91 (0.72, 0.99)	0.29 (0.13, 0.51)	0.56 (0.43, 0.68)
IL-4	Manyelo, C; 2019 (95)	South Africa	EPTB; Meningeal	23	OD	24	Serum, Frozen	Luminex	< 116.7 pg/mL	0.78 (0.56, 0.93)	0.63 (0.41, 0.81)	0.78 (0.65, 0.91)
IL-6	Manyelo, C; 2019 (95)	South Africa	EPTB; Meningeal	23	OD	24	Serum, Frozen	Luminex	< 8.0 pg/mL	0.57 (0.35, 0.77)	0.58 (0.37, 0.78)	0.63 (0.47, 0.79)
IL-7	Manyelo, C; 2019 (95)	South Africa	EPTB; Meningeal	23	OD	24	Serum, Frozen	Luminex	> 27.5 pg/mL	0.97 (0.47, 0.87)	0.50 (0.29, 0.71)	0.64 (0.48, 0.80)
IL-8	Manyelo, C; 2019 (95)	South Africa	EPTB; Meningeal	23	OD	24	Serum, Frozen	Luminex	< 42.1 pg/mL	0.61 (0.39, 0.80)	0.67 (0.45, 0.84)	0.65 (0.49, 0.81)
IL-10	Manyelo, C; 2019 (95)	South Africa	EPTB; Meningeal	23	OD	24	Serum, Frozen	Luminex	< 7.0 pg/mL	0.96 (0.78, 0.99)	0.54 (0.33, 0.75)	0.70 (0.56, 0.85)
IL-12p40	Manyelo, C; 2019 (95)	South Africa	EPTB; Meningeal	23	OD	24	Serum, Frozen	Luminex	< 620.1 pg/mL	1 (0.85, 1.0)	0.04 (0.01, 0.21)	0.52 (0.35, 0.69)
IL-13	Manyelo, C; 2019 (95)	South Africa	EPTB; Meningeal	23	OD	24	Serum, Frozen	Luminex	< 74.6 pg/mL	0.57 (0.35, 0.77)	0.46 (0.26, 0.67)	0.53 (0.38, 0.69)

IL-17A	Manyelo, C; 2019 (95)	South Africa	EPTB; Meningeal	23	OD	24	Serum, Frozen	Luminex	< 11.3 pg/mL	0.96 (0.78, 0.99)	0.38 (0.19, 0.59)	0.65 (0.53, 0.76)
IL-21	Manyelo, C; 2019 (95)	South Africa	EPTB; Meningeal	23	OD	24	Serum, Frozen	Luminex	< 34.6 pg/mL	0.96 (0.78, 0.99)	0.21 (0.07, 0.42)	0.55 (0.43, 0.67)
IP-10	Kumar, NP; 2021b (46)	India	PTB	44	ORD	76	Plasma, Frozen	Luminex	NR	0.90 (0.78, 0.98)	0.85 (0.74, 0.92)	0.95 (0.91, 0.99)
	Manyelo, C; 2019 (95)	South Africa	EPTB; Meningeal	23	OD	24	Serum, Frozen	Luminex	< 57.2 pg/mL	0.52 (0.31, 0.73)	0.67 (0.45, 0.84)	0.61 (0.44, 0.77)
MBL	Manyelo, C; 2019 (95)	South Africa	EPTB; Meningeal	23	OD	24	Serum, Frozen	Luminex	> 4522.0 ng/mL	0.78 (0.56, 0.93)	0.58 (0.37, 0.78)	0.68 (0.52, 0.84)
MCP-1	Manyelo, C; 2019 (95)	South Africa	EPTB; Meningeal	23	OD	24	Serum, Frozen	Luminex	< 327.3 pg/mL	0.74 (0.52, 0.89)	0.75 (0.533, 0.902)	0.81 (0.69, 0.93)
MIG	Manyelo, C; 2019 (95)	South Africa	EPTB; Meningeal	23	OD	24	Serum, Frozen	Luminex	> 2114.0 pg/mL	0.52 (0.31, 0.73)	0.62 (0.41, 0.81)	0.54 (0.38, 0.71)
MIP-1 α	Manyelo, C; 2019 (95)	South Africa	EPTB; Meningeal	23	OD	24	Serum, Frozen	Luminex	< 48.9 pg/mL	0.65 (0.43, 0.84)	0.54 (0.33, 0.75)	0.57 (0.41, 0.74)
MIP-1 β	Manyelo, C; 2019 (95)	South Africa	EPTB; Meningeal	23	OD	24	Serum, Frozen	Luminex	< 334.3 pg/mL	0.78 (0.56, 0.93)	0.67 (0.45, 0.84)	0.76 (0.62, 0.90)
MIP-4	Manyelo, C; 2019 (95)	South Africa	EPTB; Meningeal	23	OD	24	Serum, Frozen	Luminex	> 187.7 ng/mL	0.69 (0.47, 0.87)	0.54 (0.33, 0.75)	0.61 (0.44, 0.77)
MMP-1	Manyelo, C; 2019 (95)	South Africa	EPTB; Meningeal	23	OD	24	Serum, Frozen	Luminex	> 4282.0 pg/mL	0.61 (0.39, 0.80)	0.54 (0.33, 0.75)	0.66 (0.50, 0.81)
MMP-7	Manyelo, C; 2019 (95)	South Africa	EPTB; Meningeal	23	OD	24	Serum, Frozen	Luminex	< 869.0 pg/mL	0.61 (0.39, 0.80)	0.63 (0.41, 0.81)	0.61 (0.45, 0.78)
MMP-8	Manyelo, C; 2019 (95)	South Africa	EPTB; Meningeal	23	OD	24	Serum, Frozen	Luminex	> 22769.0 pg/mL	0.57 (0.35, 0.77)	0.58 (0.37, 0.78)	0.59 (0.41, 0.75)
MMP-9	Manyelo, C; 2019 (95)	South Africa	EPTB; Meningeal	23	OD	24	Serum, Frozen	Luminex	> 189764.0 pg/mL	0.57 (0.35, 0.77)	0.58 (0.37, 0.78)	0.57 (0.40, 0.74)
MPO	Manyelo, C; 2019 (95)	South Africa	EPTB; Meningeal	23	OD	24	Serum, Frozen	Luminex	> 4650000.0 pg/mL	0.52 (0.31, 0.73)	0.71 (0.49, 0.87)	0.56 (0.39, 0.73)
Myoglobin	Manyelo, C; 2019 (95)	South Africa	EPTB; Meningeal	23	OD	24	Serum, Frozen	Luminex	< 10.2 pg/mL	0.61 (0.39, 0.80)	0.67 (0.45, 0.84)	0.61 (0.44, 0.78)
NCAM-1	Manyelo, C; 2019 (95)	South Africa	EPTB; Meningeal	23	OD	24	Serum, Frozen	Luminex	< 264419.0 pg/mL	0.69 (0.47, 0.87)	0.71 (0.49, 0.87)	0.68 (0.52, 0.84)
NGAL	Manyelo, C; 2019 (95)	South Africa	EPTB; Meningeal	23	OD	24	Serum, Frozen	Luminex	> 371.5 ng/mL	0.52 (0.31, 0.73)	0.50 (0.29, 0.71)	0.52 (0.35, 0.69)

PAI-1	Manyelo, C; 2019 (95)	South Africa	EPTB; Meningeal	23	OD	24	Serum, Frozen	Luminex	> 255621.0 pg/mL	0.78 (0.56, 0.93)	0.58 (0.37, 0.78)	0.70 (0.55, 0.85)
PDGF-AA	Manyelo, C; 2019 (95)	South Africa	EPTB; Meningeal	23	OD	24	Serum, Frozen	Luminex	> 6150.0 pg/mL	0.69 (0.47, 0.87)	0.50 (0.29, 0.71)	0.61 (0.44, 0.77)
PDGF-AB/BB	Manyelo, C; 2019 (95)	South Africa	EPTB; Meningeal	23	OD	24	Serum, Frozen	Luminex	> 42307.0 pg/mL	0.65 (0.43, 0.84)	0.67 (0.45, 0.84)	0.68 (0.53, 0.84)
PEDF	Manyelo, C; 2019 (95)	South Africa	EPTB; Meningeal	23	OD	24	Serum, Frozen	Luminex	> 21725.0 ng/mL	0.52 (0.31, 0.73)	0.54 (0.33, 0.75)	0.53 (0.36, 0.70)
P-Selectin	Manyelo, C; 2019 (95)	South Africa	EPTB; Meningeal	23	OD	24	Serum, Frozen	Luminex	> 159.1 ng/mL	0.65 (0.43, 0.84)	0.63 (0.41, 0.81)	0.58 (0.42, 0.75)
RAGE	Manyelo, C; 2019 (95)	South Africa	EPTB; Meningeal	23	OD	24	Serum, Frozen	Luminex	< 875.8 pg/mL	0.74 (0.52, 0.90)	0.50 (0.29, 0.71)	0.64 (0.48, 0.80)
RANTES	Manyelo, C; 2019 (95)	South Africa	EPTB; Meningeal	23	OD	24	Serum, Frozen	Luminex	> 99016.0 pg/mL	0.57 (0.35, 0.77)	0.54 (0.33, 0.75)	0.52 (0.35, 0.69)
S100B	Manyelo, C; 2019 (95)	South Africa	EPTB; Meningeal	23	OD	24	Serum, Frozen	Luminex	> 2772.0 pg/mL	0.56 (0.31, 0.79)	0.40 (0.19, 0.64)	0.50 (0.34, 0.66)
SAA	Manyelo, C; 2019 (95)	South Africa	EPTB; Meningeal	23	OD	24	Serum, Frozen	Luminex	> 59894.0 ng/mL	0.57 (0.35, 0.77)	0.67 (0.45, 0.84)	0.54 (0.37, 0.71)
SAP	Manyelo, C; 2019 (95)	South Africa	EPTB; Meningeal	23	OD	24	Serum, Frozen	Luminex	> 257478.0 ng/mL	0.78 (0.56, 0.93)	0.71 (0.49, 0.87)	0.74 (0.59, 0.89)
TGF- α	Manyelo, C; 2019 (95)	South Africa	EPTB; Meningeal	23	OD	24	Serum, Frozen	Luminex	> 29.9 pg/mL	0.69 (0.47, 0.87)	0.54 (0.33, 0.75)	0.64 (0.48, 0.80)
TNF	Manyelo, C; 2019 (95)	South Africa	EPTB; Meningeal	23	OD	24	Serum, Frozen	Luminex	< 12.9 pg/mL	0.78 (0.56, 0.93)	0.79 (0.58, 0.93)	0.77 (0.62, 0.91)
VCAM-1	Manyelo, C; 2019 (95)	South Africa	EPTB; Meningeal	23	OD	24	Serum, Frozen	Luminex	< 1580000.0 pg/mL	0.78 (0.56, 0.93)	0.67 (0.45, 0.84)	0.82 (0.70, 0.94)
VEGF	Manyelo, C; 2019 (95)	South Africa	EPTB; Meningeal	23	OD	24	Serum, Frozen	Luminex	> 111.2 pg/mL	0.78 (0.56, 0.93)	0.54 (0.33, 0.75)	0.62 (0.45, 0.78)
Signatures												
CFD, A β 42, IL-10	Manyelo, C; 2019 (95)	South Africa	EPTB, Meningeal	23	OD	24	Serum, Frozen	Luminex	NR	0.83 (0.61, 0.95)	0.71 (0.49, 0.87)	0.84 (0.73, 0.96)
I-309, CXCL1	Kumar, NP; 2021b (46)	India	PTB, CRS	44	ORD	76	Plasma, Frozen	Luminex	NR	1.0 (0.92, 1.0)	1.0 (0.95, 1.0)	1.0 NR
CRP, IFN- γ , IP-10, CFH, Apo-AI, SAA, NCAM1	Manyelo, C; 2019 (95)	South Africa	EPTB, Meningeal	23	OD	24	Serum, Frozen	Luminex	NR	0.61 (0.39, 0.80)	0.58 (0.37, 0.78)	0.80 (0.67, 0.92)

TNF, IL-2, IL-17A	Kumar, NP; 2021a (40)	India	PTB, MRS	36	ORD	46	Plasma, Frozen	Luminex	NR	1.0 (0.90, 1.0)	0.98 (0.89, 0.99)	0.99 (NR)
-------------------	-----------------------	-------	----------	----	-----	----	----------------	---------	----	------------------------	--------------------------	-----------

References

1. World Health Organization. Global Tuberculosis Report 2023. 2023.
2. Broger T, Koeppl L, Huerga H, Miller P, Gupta-Wright A, Blanc F-X, et al. Diagnostic yield of urine lipoarabinomannan and sputum tuberculosis tests in people living with HIV: a systematic review and meta-analysis of individual participant data. *The Lancet Global Health*. 2023;11(6):e903-e16.
3. Pai M, Nicol MP, Boehme CC. Tuberculosis Diagnostics: State of the Art and Future Directions. *Microbiology Spectrum*. 2016;4(5):4.5.16.
4. World Health Organization. Meeting Report: High-priority target product profiles for new tuberculosis diagnostics: report of a consensus meeting Geneva, Switzerland 2014 [Available from: https://apps.who.int/iris/bitstream/handle/10665/135617/WHO_HTM_TB_2014.18_eng.pdf].
5. Gupta-Wright A, Ha H, Abdugadar S, Crowder R, Emmanuel J, Mukwatamundu J, et al. Evaluation of the Xpert MTB Host Response assay for the triage of patients with presumed pulmonary tuberculosis: a prospective diagnostic accuracy study in Viet Nam, India, the Philippines, Uganda, and South Africa. *The Lancet Global Health*. 2024;12(2):e226-e34.
6. Brümmer LE, Thompson RR, Malhotra A, Shrestha S, Kendall EA, Andrews JR, et al. Cost-effectiveness of Low-complexity Screening Tests in Community-based Case-finding for Tuberculosis. *Clin Infect Dis*. 2024;78(1):154-63.
7. Reddy KP, Gupta-Wright A, Fielding KL, Costantini S, Zheng A, Corbett EL, et al. Cost-effectiveness of urine-based tuberculosis screening in hospitalised patients with HIV in Africa: a microsimulation modelling study. *The Lancet Global Health*. 2019;7(2):e200-e8.
8. Yoon C, Chaisson LH, Patel SM, Allen IE, Drain PK, Wilson D, Cattamanchi A. Diagnostic accuracy of C-reactive protein for active pulmonary tuberculosis: a meta-analysis. *Int J Tuberc Lung Dis*. 2017;21(9):1013-9.
9. Santos VS, Goletti D, Kontogianni K, Adams ER, Molina-Moya B, Dominguez J, et al. Acute phase proteins and IP-10 as triage tests for the diagnosis of tuberculosis: systematic review and meta-analysis. *Clin Microbiol Infect*. 2019;25(2):169-77.
10. Page MJ, McKenzie JE, Bossuyt PM, Boutron I, Hoffmann TC, Mulrow CD, et al. The PRISMA 2020 statement: an updated guideline for reporting systematic reviews. *BMJ*. 2021;372:n71.
11. World Health Organization. Commercial serodiagnostic tests for diagnosis of tuberculosis: policy statement.; 2011. Contract No.: WHO/HTM/TB/2011.5.
12. World Health Organization. WHO operational handbook on tuberculosis: module 3: diagnosis: rapid diagnostics for tuberculosis detection. 2021.
13. Whiting PF, Rutjes AW, Westwood ME, Mallett S, Deeks JJ, Reitsma JB, et al. QUADAS-2: a revised tool for the quality assessment of diagnostic accuracy studies. *Ann Intern Med*. 2011;155(8):529-36.
14. MacLean E, Broger T, Yerlikaya S, Fernandez-Carballo BL, Pai M, Denking CM. A systematic review of biomarkers to detect active tuberculosis. *Nat Microbiol*. 2019;4(5):748-58.
15. Van Enst WA, Ochodo E, Scholten RJ, Hooft L, Leeflang MM. Investigation of publication bias in meta-analyses of diagnostic test accuracy: a meta-epidemiological study. *BMC Medical Research Methodology*. 2014;14(1):70.

16. Deeks JB, PM; Leeflang, MM; Takwoingi, Y. Cochrane Handbook for Systematic Reviews of Diagnostic Test Accuracy. Version 2.0: Cochrane; 2023.
17. Sahin F, Yildiz P. Distinctive biochemical changes in pulmonary tuberculosis and pneumonia. *Arch Med Sci.* 2013;9(4):656-61.
18. Yoon C, Semitala FC, Atuhumuza E, Katende J, Mwebe S, Asege L, et al. Point-of-care C-reactive protein-based tuberculosis screening for people living with HIV: a diagnostic accuracy study. *The Lancet Infectious Diseases.* 2017;17(12):1285-92.
19. Ruperez M, Shanaube K, Mureithi L, Wapamesa C, Burnett JM, Kosloff B, et al. Use of point-of-care C-reactive protein testing for screening of tuberculosis in the community in high-burden settings: a prospective, cross-sectional study in Zambia and South Africa. *The Lancet Global Health.* 2023;11(5):e704-e14.
20. Boyles TH, Nduna M, Pitsi T, Scott L, Fox MP, Maartens G. A Clinical Prediction Score Including Trial of Antibiotics and C-Reactive Protein to Improve the Diagnosis of Tuberculosis in Ambulatory People With HIV. *Open Forum Infect Dis.* 2020;7(2):ofz543.
21. Garland HN, Ellappan K, Hewitt M, Perumal P, Pekeleke S, Wand N, et al. Evaluation of Host Protein Biomarkers by ELISA From Whole Lysed Peripheral Blood for Development of Diagnostic Tests for Active Tuberculosis. *Frontiers in Immunology.* 2022;13.
22. Ndiaye MDB, Ranaivomanana P, Rasoloharimanana LT, Rasolofo V, Ratovoson R, Herindrainy P, et al. Plasma host protein signatures correlating with Mycobacterium tuberculosis activity prior to and during antituberculosis treatment. *Scientific Reports.* 2022;12(1):20640.
23. Mateos J, Estevez O, Gonzalez-Fernandez A, Anibarro L, Pallares A, Reljic R, et al. Serum proteomics of active tuberculosis patients and contacts reveals unique processes activated during Mycobacterium tuberculosis infection. *Scientific Reports.* 2020;10(1).
24. Kumar NP, Banurekha VV, Nair D, Dolla C, Kumaran P, Babu S. Modulation of iron status biomarkers in tuberculosis-diabetes co-morbidity. *Tuberculosis (Edinb).* 2018;108:127-35.
25. Andrade BB, Pavan Kumar N, Mayer-Barber KD, Barber DL, Sridhar R, Rekha VV, et al. Plasma heme oxygenase-1 levels distinguish latent or successfully treated human tuberculosis from active disease. *PLoS One.* 2013;8(5):e62618.
26. Andrade BB, Pavan Kumar N, Amaral EP, Riteau N, Mayer-Barber KD, Tosh KW, et al. Heme Oxygenase-1 Regulation of Matrix Metalloproteinase-1 Expression Underlies Distinct Disease Profiles in Tuberculosis. *J Immunol.* 2015;195(6):2763-73.
27. Shiratori B, Leano S, Nakajima C, Chagan-Yasutan H, Niki T, Ashino Y, et al. Elevated OPN, IP-10, and neutrophilia in loop-mediated isothermal amplification confirmed tuberculosis patients. *Mediators Inflamm.* 2014;2014:513263.
28. Kathamuthu GR, Kumar NP, Moideen K, Nair D, Banurekha VV, Sridhar R, et al. Matrix Metalloproteinases and Tissue Inhibitors of Metalloproteinases Are Potential Biomarkers of Pulmonary and Extra-Pulmonary Tuberculosis. *Front Immunol.* 2020;11:419.
29. Liu YY, Ndumego OC, Chen TT, Kim RS, Jenny-Avital ER, Ndung'u T, et al. Soluble CD14 as a Diagnostic Biomarker for Smear-Negative HIV-Associated Tuberculosis. *Pathogens.* 2018;7(1).
30. Wilson D, Badri M, Maartens G. Performance of Serum C-Reactive Protein as a Screening Test for Smear-Negative Tuberculosis in an Ambulatory High HIV Prevalence Population. *PLOS ONE.* 2011;6(1):e15248.
31. Namuganga AR, Nsereko M, Bagaya BS, Mayanja-Kizza H, Chegou NN. Differential expression of host protein biomarkers among symptomatic clinic attendees finally

- diagnosed with tuberculosis and other respiratory diseases with or without latent *Mycobacterium tuberculosis* infection. *Immunology Letters*. 2023;253:8-18.
32. Jacobs R, Malherbe S, Loxton AG, Stanley K, van der Spuy G, Walzl G, Chegou NN. Identification of novel host biomarkers in plasma as candidates for the immunodiagnosis of tuberculosis disease and monitoring of tuberculosis treatment response. *Oncotarget*. 2016;7(36):57581-92.
 33. De Groot Mary A, Sterling David G, Hraha T, Russell Theresa M, Green Louis S, Wall K, et al. Discovery and Validation of a Six-Marker Serum Protein Signature for the Diagnosis of Active Pulmonary Tuberculosis. *Journal of Clinical Microbiology*. 2017;55(10):3057-71.
 34. Morris TC, Hoggart CJ, Chegou NN, Kidd M, Oni T, Goliath R, et al. Evaluation of Host Serum Protein Biomarkers of Tuberculosis in sub-Saharan Africa. *Front Immunol*. 2021;12:639174.
 35. Lubbers R, Sutherland JS, Goletti D, de Paus RA, van Moorsel CHM, Veltkamp M, et al. Complement Component C1q as Serum Biomarker to Detect Active Tuberculosis. *Front Immunol*. 2018;9:2427.
 36. Chen X, Wang J, Wang J, Ye J, Di P, Dong C, et al. Several Potential Serum Proteomic Biomarkers for Diagnosis of Osteoarticular Tuberculosis Based on Mass Spectrometry. *Clinica Chimica Acta*. 2023:117447.
 37. Sampath P, Rajamanickam A, Thiruvengadam K, Natarajan AP, Hissar S, Dhanapal M, et al. Cytokine upsurge among drug-resistant tuberculosis endorse the signatures of hyper inflammation and disease severity. *Scientific Reports*. 2023;13(1):785.
 38. Koepfel L, Denkinger CM, Wyss R, Broger T, Chegou NN, Dunty JM, et al. Diagnostic performance of host protein signatures as a triage test for active pulmonary TB. *J Clin Microbiol*. 2023:e0026423.
 39. Jaganath D, Reza TF, Wambi P, Nakafeero J, Kiconco E, Nanyonga G, et al. The Role of C-Reactive Protein as a Triage Tool for Pulmonary Tuberculosis in Children. *J Pediatric Infect Dis Soc*. 2022;11(7):316-21.
 40. Kumar NP, Hissar S, Thiruvengadam K, Banurekha VV, Suresh N, Shankar J, et al. Discovery and Validation of a Three-Cytokine Plasma Signature as a Biomarker for Diagnosis of Pediatric Tuberculosis. *Front Immunol*. 2021;12:653898.
 41. Lin L, Li S, Xiong Q, Wang H. A retrospective study on the combined biomarkers and ratios in serum and pleural fluid to distinguish the multiple types of pleural effusion. *BMC Pulm Med*. 2021;21(1):95.
 42. Tural Önür S, Sökücü SN, Dalar L, Seyhan EC, Akbaş A, Altın S. Are soluble IL-2 receptor and IL-12p40 levels useful markers for diagnosis of tuberculous pleurisy? *Infect Dis (Lond)*. 2015;47(3):150-5.
 43. Mann TN, Davis JH, Walzl G, Beltran CG, du Toit J, Lamberts RP, Chegou NN. Candidate Biomarkers to Distinguish Spinal Tuberculosis From Mechanical Back Pain in a Tuberculosis Endemic Setting. *Front Immunol*. 2021;12:768040.
 44. Goyal N, Kashyap B, Kaur IR. Significance of IFN- γ /IL-2 Ratio as a Circulating Diagnostic Biomarker in Extrapulmonary Tuberculosis. *Scand J Immunol*. 2016;83(5):338-44.
 45. Kashyap B, Gupta N, Dewan P, Hyanki P, Singh NP. High Sensitivity C Reactive Protein: An Adjunct Diagnosis in Ruling Out Pediatric Tuberculosis. *Indian J Clin Biochem*. 2020;35(2):211-7.
 46. Kumar NP, Hissar S, Thiruvengadam K, Banurekha VV, Balaji S, Elilarasi S, et al. Plasma chemokines as immune biomarkers for diagnosis of pediatric tuberculosis. *Bmc Infectious Diseases*. 2021;21(1).

47. Ciccacci F, Florida M, Bernardini R, Sidumo Z, Mugunhe RJ, Andreotti M, et al. Plasma levels of CRP, neopterin and IP-10 in HIV-infected individuals with and without pulmonary tuberculosis. *J Clin Tuberc Other Mycobact Dis*. 2019;16:100107.
48. Franco Fontes C, Silva Bidu N, Rodrigues Freitas F, Maranhão RC, Santos Monteiro AdS, David Couto R, Martins Netto E. Changes in serum amyloid A, plasma high-density lipoprotein cholesterol and apolipoprotein AI as useful biomarkers for *Mycobacterium tuberculosis* infection. *Journal of Medical Microbiology*. 2023;72(6):001726.
49. Rutjes AW, Reitsma JB, Vandenbroucke JP, Glas AS, Bossuyt PM. Case–Control and Two-Gate Designs in Diagnostic Accuracy Studies. *Clinical Chemistry*. 2005;51(8):1335-41.
50. Meca A-D, Turcu-Stiolica A, Bogdan M, Subtirelu M-S, Cocos R, Ungureanu BS, et al. Screening performance of C-reactive protein for active pulmonary tuberculosis in HIV-positive patients: A systematic review with a meta-analysis. *Frontiers in Immunology*. 2022;13.
51. World Health Organization. WHO consolidated guidelines on tuberculosis: Module 2: Screening: Systematic screening for tuberculosis disease. 2021.
52. Dendukuri N, Schiller I, De Groot J, Libman M, Moons K, Reitsma J, Van Smeden M. Concerns about composite reference standards in diagnostic research. *BMJ*. 2018;j5779.
53. Basu Roy R, Whittaker E, Seddon JA, Kampmann B. Tuberculosis susceptibility and protection in children. *Lancet Infect Dis*. 2019;19(3):e96-e108.
54. Abraham RA, Rana G, Agrawal PK, Johnston R, Sarna A, Ramesh S, et al. The Effects of a Single Freeze-Thaw Cycle on Concentrations of Nutritional, Noncommunicable Disease, and Inflammatory Biomarkers in Serum Samples. *Journal of Laboratory Physicians*. 2021;13(01):006-13.
55. Lee J-E, Kim SY, Shin S-Y. Effect of Repeated Freezing and Thawing on Biomarker Stability in Plasma and Serum Samples. *Osong Public Health and Research Perspectives*. 2015;6(6):357-62.
56. Tighe PJ, Ryder RR, Todd I, Fairclough LC. ELISA in the multiplex era: Potentials and pitfalls. *PROTEOMICS – Clinical Applications*. 2015;9(3-4):406-22.
57. Anfossi L, Di Nardo F, Cavalera S, Giovannoli C, Baggiani C. Multiplex Lateral Flow Immunoassay: An Overview of Strategies towards High-throughput Point-of-Need Testing. *Biosensors (Basel)*. 2018;9(1).
58. Yang X, Liu L, Hao Q, Zou D, Zhang X, Zhang L, et al. Development and Evaluation of Up-Converting Phosphor Technology-Based Lateral Flow Assay for Quantitative Detection of NT-proBNP in Blood. *PLoS One*. 2017;12(2):e0171376.
59. Schuster Da Silva S, Cunha ML, Ayres LB, Garcia CD, Blanes L. Advancements and future directions in cardiac biomarker detection using lateral flow assays. *Analytical Methods*. 2023;15(30):3610-30.
60. Richardson TR, Smith B, Malherbe ST, Shaw JA, Noor F, Macdonald C, et al. Field evaluation of a point-of-care triage test for active tuberculosis (TriageTB). *BMC Infectious Diseases*. 2023;23(1).
61. Ahmad R, Xie L, Pyle M, Suarez MF, Broger T, Steinberg D, et al. A rapid triage test for active pulmonary tuberculosis in adult patients with persistent cough. *Sci Transl Med*. 2019;11(515).
62. Boyles TH, Nduna M, Pitsi T, Scott L, Fox MP, Maartens G, editors. A clinical prediction score including trial of antibiotics and C-reactive protein to improve the diagnosis of tuberculosis in ambulatory people with HIV. *Open forum infectious diseases*; 2020: Oxford University Press US.

63. Calderwood CJ, Reeve BW, Mann T, Palmer Z, Nyawo G, Mishra H, et al. Clinical utility of C-reactive protein-based triage for presumptive pulmonary tuberculosis in South African adults. *Journal of Infection*. 2023;86(1):24-32.
64. Chen T, Lin J, Wang W, Fleming J, Chen L, Wang Y, et al. Cytokine and Antibody Based Diagnostic Algorithms for Sputum Culture-Positive Pulmonary Tuberculosis. *PLoS One*. 2015;10(12):e0144705.
65. Du ZX, Liang MM, Sun J, Wang WJ, Liu YH, Yang JH. Clinical significance of serum CA-125, CA19-9 and CEA in pulmonary tuberculosis with and without type 2 diabetes. *Tuberculosis (Edinb)*. 2017;107:104-10.
66. Essone PN, Adegbite BR, Mbadinga MJM, Mbouna AV, Lotola-Mougeni F, Alabi A, et al. Creatine kinase-(MB) and hepcidin as candidate biomarkers for early diagnosis of pulmonary tuberculosis: a proof-of-concept study in Lambarene, Gabon. *Infection*.
67. Estévez O, Anibarro L, Garet E, Pallares Á, Pena A, Villaverde C, et al. Identification of candidate host serum and saliva biomarkers for a better diagnosis of active and latent tuberculosis infection. *PLoS One*. 2020;15(7):e0235859.
68. Farr K, Ravindran R, Strnad L, Chang E, Chaisson LH, Yoon C, et al. Diagnostic performance of blood inflammatory markers for tuberculosis screening in people living with HIV. *PLoS One*. 2018;13(10):e0206119.
69. Halliday A, Jain P, Hoang L, Parker R, Tolosa-Wright M, Masonou T, et al. Efficacy and Mechanism Evaluation. New technologies for diagnosing active TB: the VANTDET diagnostic accuracy study. 2021.
70. Jiang XX, Huang JF, Huo Z, Zhang QQ, Jiang Y, Wu XP, et al. Elevation of soluble major histocompatibility complex class I related chain A protein in malignant and infectious diseases in Chinese patients. *Bmc Immunology*. 2012;13.
71. Lawn SD, Kerkhoff AD, Vogt M, Wood R. Diagnostic and prognostic value of serum C-reactive protein for screening for HIV-associated tuberculosis. *Int J Tuberc Lung Dis*. 2013;17(5):636-43.
72. Lee K, Chung W, Jung Y, Kim Y, Park J, Sheen S, Park K. CXCR3 ligands as clinical markers for pulmonary tuberculosis. *Int J Tuberc Lung Dis*. 2015;19(2):191-9.
73. Lubbers R, Sutherland JS, Goletti D, de Paus RA, van Moorsel CHM, Veltkamp M, et al. Complement Component C1q as Serum Biomarker to Detect Active Tuberculosis. *Frontiers in Immunology*.9.
74. Lubbers R, Sutherland JS, Goletti D, de Paus RA, Dijkstra DJ, van Moorsel CHM, et al. Expression and production of the SERPING1-encoded endogenous complement regulator C1-inhibitor in multiple cohorts of tuberculosis patients. *Mol Immunol*. 2020;120:187-95.
75. Luo Y, Xue Y, Lin Q, Tang G, Yuan X, Mao L, et al. A combination of iron metabolism indexes and tuberculosis-specific antigen/phytohemagglutinin ratio for distinguishing active tuberculosis from latent tuberculosis infection. *Int J Infect Dis*. 2020;97:190-6.
76. Meyer AJ, Ochom E, Turimumahoro P, Byanyima P, Sanyu I, Lalitha R, et al. C-Reactive Protein Testing for Active Tuberculosis among Inpatients without HIV in Uganda: a Diagnostic Accuracy Study. *J Clin Microbiol*. 2020;59(1).
77. Mikačić M, Vasilj I, Vasilj M, Bevanda D, Šimović M, Galić K. Tumor Marker CA 125 in the Diagnosis of Active Pulmonary Tuberculosis - A Study of Adults in Mostar, B&H. *Psychiatr Danub*. 2017;29 Suppl 4(Suppl 4):841-4.
78. Moreira FMF, Verma R, dos Santos PCP, Leite A, Santos AD, de Araujo RCP, et al. Blood-based host biomarker diagnostics in active case finding for pulmonary tuberculosis: A diagnostic case-control study. *EclinicalMedicine*. 2021;33.

79. Namuganga AR, Chegou NN, Mubiri P, Walzl G, Mayanja-Kizza H. Suitability of saliva for Tuberculosis diagnosis: comparing with serum. *BMC Infect Dis.* 2017;17(1):600.
80. Peruhype-Magalhães V, de Araújo FF, de Moraes Papini TF, Wendling APB, Campi-Azevedo AC, Coelho-dos-Reis JG, et al. Serum biomarkers in patients with unilateral or bilateral active pulmonary tuberculosis: Immunological networks and promising diagnostic applications. *Cytokine.* 2023;162:156076.
81. Ruperez M, Shanaube K, Mureithi L, Wapamesa C, Burnett MJ, Kosloff B, et al. Use of point-of-care C-reactive protein testing for screening of tuberculosis in the community in high-burden settings: a prospective, cross-sectional study in Zambia and South Africa. *The Lancet Global Health.* 2023;11(5):e704-e14.
82. Sampath P, Rajamanickam A, Thiruvengadam K, Natarajan AP, Hissar S, Dhanapal M, et al. Plasma chemokines CXCL10 and CXCL9 as potential diagnostic markers of drug-sensitive and drug-resistant tuberculosis. *Scientific Reports.* 2023;13(1):7404.
83. Samuels THA, Wyss R, Ongarello S, Moore DAJ, Schumacher SG, Denkinger CM. Evaluation of the diagnostic performance of laboratory-based c-reactive protein as a triage test for active pulmonary tuberculosis. *PLOS ONE.* 2021;16(7):e0254002.
84. Shapiro AE, Hong T, Govere S, Thulare H, Moosa MY, Dorasamy A, et al. C-reactive protein as a screening test for HIV-associated pulmonary tuberculosis prior to antiretroviral therapy in South Africa. *Aids.* 2018;32(13):1811-20.
85. Uwimaana E, Bagaya BS, Castelnuovo B, Kateete DP, Godwin A, Kiwanuka N, et al. Heme oxygenase-1 and neopterin plasma/serum levels and their role in diagnosing active and latent TB among HIV/TB co-infected patients: a cross sectional study. *Bmc Infectious Diseases.* 2021;21(1).
86. Yang Q, Cai Y, Zhao W, Wu F, Zhang M, Luo K, et al. IP-10 and MIG are compartmentalized at the site of disease during pleural and meningeal tuberculosis and are decreased after antituberculosis treatment. *Clin Vaccine Immunol.* 2014;21(12):1635-44.
87. Kumar NP, Moideen K, Nancy A, Viswanathan V, Shruthi BS, Sivakumar S, et al. Plasma chemokines are biomarkers of disease severity, higher bacterial burden and delayed sputum culture conversion in pulmonary tuberculosis. *Scientific Reports.* 2019;9(1):18217.
88. Abhimanyu, Bose M, Varma-Basil M, Jain A, Sethi T, Tiwari PK, et al. Establishment of Elevated Serum Levels of IL-10, IL-8 and TNF- β as Potential Peripheral Blood Biomarkers in Tubercular Lymphadenitis: A Prospective Observational Cohort Study. *PLoS One.* 2016;11(1):e0145576.
89. Fernández de Larrea C, Duplat A, Giampietro F, de Waard JH, Luna J, Singh M, Araujo Z. Diagnostic accuracy of immunological methods in patients with tuberculous pleural effusion from Venezuela. *Invest Clin.* 2011;52(1):23-34.
90. He X, Gao Y, Liu Q, Zhao Z, Deng W, Yang H. Diagnostic Value of Interferon-Gamma Release Assays Combined with Multiple Indicators for Tuberculous Peritonitis. *Gastroenterol Res Pract.* 2020;2020:2056168.
91. Kim J, Kim SE, Park BS, Shin KJ, Ha SY, Park J, et al. Procalcitonin as a Diagnostic and Prognostic Factor for Tuberculosis Meningitis. *Journal of Clinical Neurology.* 2016;12(3):332-9.
92. Liu Q, Ou Q, Chen H, Gao Y, Liu Y, Xu Y, et al. Differential expression and predictive value of monocyte scavenger receptor CD163 in populations with different tuberculosis infection statuses. *BMC Infect Dis.* 2019;19(1):1006.
93. Lou C, Liu J, Ren Z, Ji J, Ma H, Dong H, et al. Analysis of the Value of Serum Biomarker LBP in the Diagnosis of Spinal Tuberculosis. *Infection and Drug Resistance.* 2022:4915-26.

94. Wang J, Feng Z-X, Ren T, Meng W-Y, Khan I, Fan X-X, et al. Novel clinical biomarkers in blood and pleural effusion for diagnosing patients with tuberculosis distinguishing from malignant tumor. *Medicine*. 2022;101(41):e31027.
95. Manyelo CM, Solomons RS, Snyders CI, Mutavhatsindi H, Manngo PM, Stanley K, et al. Potential of Host Serum Protein Biomarkers in the Diagnosis of Tuberculous Meningitis in Children. *Front Pediatr*. 2019;7:376.