

1  
2  
3  
4  
5  
6  
7  
8  
9  
10  
11  
12  
13  
14  
15  
16  
17  
18  
19  
20

**Molnupiravir or nirmatrelvir-ritonavir versus usual care in patients admitted to hospital with COVID-19 (RECOVERY): a randomised, controlled, open-label, platform trial**

**Running title:** Molnupiravir or nirmatrelvir-ritonavir for COVID-19  
**RECOVERY Collaborative Group\***

\*The writing committee and trial steering committee are listed at the end of this manuscript and a complete list of collaborators in the Randomised Evaluation of COVID-19 Therapy (RECOVERY) trial is provided in the Supplementary Appendix.

Correspondence to: Prof Peter W Horby and Prof Martin J Landray, RECOVERY Central Coordinating Office, Richard Doll Building, Old Road Campus, Roosevelt Drive, Oxford OX3 7LF, United Kingdom.

Email: [recoverytrial@ndph.ox.ac.uk](mailto:recoverytrial@ndph.ox.ac.uk)

21 **SUMMARY**

22 **Background:** Molnupiravir and nirmatrelvir-ritonavir (Paxlovid) are oral antivirals that  
23 have been proposed as treatments for patients admitted to hospital with COVID-19.

24 **Methods:** In this randomised, controlled, open-label, adaptive platform trial, several  
25 potential treatments for patients hospitalised with COVID-19 pneumonia were evaluated.  
26 Molnupiravir and nirmatrelvir-ritonavir were assessed in separate comparisons in  
27 RECOVERY, both of which are reported here. Eligible and consenting adults could join  
28 the molnupiravir comparison, the nirmatrelvir-ritonavir comparison, or both. For each  
29 comparison, participants were randomly allocated in a 1:1 ratio to the relevant antiviral  
30 (five days of molnupiravir 800mg twice daily or nirmatrelvir-ritonavir 300mg/100mg twice  
31 daily) or to usual care without the relevant antiviral drug, using web-based unstratified  
32 randomisation with allocation concealment. The primary outcome was 28-day mortality,  
33 and secondary outcomes were time to discharge alive from hospital, and among those  
34 not on invasive ventilation at baseline, progression to invasive ventilation or death.  
35 Analysis was by intention-to-treat. Both comparisons were stopped by the investigators  
36 because of low recruitment. ISRCTN (50189673) and clinicaltrials.gov (NCT04381936).

37 **Findings:** From 24 January 2022 to 24 May 2023, 923 patients were recruited to the  
38 molnupiravir comparison (445 allocated molnupiravir and 478 allocated usual care), and  
39 from 31 March 2022 to 24 May 2023, 137 patients were recruited to the nirmatrelvir-  
40 ritonavir comparison (68 allocated nirmatrelvir-ritonavir and 69 allocated usual care).  
41 More than three-quarters of the patients in both comparisons were vaccinated and had  
42 anti-spike antibodies at randomisation, and more than two-thirds were receiving other

## Molnupiravir or nirmatrelvir-ritonavir for COVID-19

43 SARS-CoV-2 antivirals (including remdesivir or sotrovimab). In the molnupiravir  
44 comparison, 74 (17%) patients allocated to molnupiravir and 79 (17%) patients allocated  
45 usual care died within 28 days (hazard ratio [HR] 0.93; 95% confidence interval [CI] 0.68-  
46 1.28;  $p=0.66$ ). In the nirmatrelvir-ritonavir comparison, 13 (19%) patients allocated  
47 nirmatrelvir-ritonavir and 13 (19%) patients allocated usual care died within 28 days (HR  
48 1.02; 95% CI 0.47-2.23;  $p=0.96$ ). In neither comparison was there evidence of a  
49 significant difference in the duration of hospitalisation or the proportion of patients  
50 progressing to invasive ventilation or death.

51 **Interpretation:** In adults hospitalised with COVID-19, neither molnupiravir nor  
52 nirmatrelvir-ritonavir were associated with reductions in 28-day mortality, duration of  
53 hospital stay, or risk of progressing to invasive mechanical ventilation or death although  
54 these comparisons had limited statistical power due to low recruitment.

55 **Funding:** UK Research and Innovation (Medical Research Council) and National Institute  
56 of Health and Care Research (Grant ref: MC\_PC\_19056), and Wellcome Trust (Grant  
57 Ref: 222406/Z/20/Z).

58 **Trial registration:** ClinicalTrials.gov NCT04381936

59 <https://clinicaltrials.gov/ct2/show/NCT04381936>

60 ISRCTN50189673 <http://www.isrctn.com/ISRCTN50189673>

61 **Keywords:** COVID-19, molnupiravir, nirmatrelvir, clinical trial.

62

63 **INTRODUCTION**

64 Early antiviral treatment of unvaccinated patients at high risk of severe COVID-19 can  
65 substantially reduce the risk of subsequent hospitalisation or death.<sup>1-3</sup> There is less  
66 evidence supporting antiviral treatment in people admitted to hospital, and in these  
67 patients it may be that immune-mediated lung damage, rather than ongoing viral  
68 replication, is primarily responsible for disease progression. Antiviral treatment with  
69 neutralising monoclonal antibodies (nMAb) has been shown to substantially reduce  
70 mortality in hospitalised patients, but only in those not yet producing their own anti-SARS-  
71 CoV-2 antibodies.<sup>4</sup> However, most immunocompetent adults now have some SARS-  
72 COV-2 immunity following vaccination or previous infection, and the available nMAbs are  
73 now largely ineffective because of spike gene mutations in globally prevalent SARS-COV-  
74 2 variants.<sup>5,6</sup> Remdesivir, a nucleoside analogue inhibitor of the viral RNA-dependent  
75 RNA polymerase, reduces time-to-discharge by around one day in hospitalised patients  
76 and is associated with a moderate reduction in mortality, at least in non-ventilated  
77 patients.<sup>7,8</sup> Other potent SARS-CoV-2 antivirals, including molnupiravir and nirmatrelvir-  
78 ritonavir (Paxlovid), have not been adequately tested in randomised trials in hospitalised  
79 patients, and it could be that these drugs, given alone or in combination with other  
80 antivirals, would improve clinical outcomes.

81 Molnupiravir is an orally absorbed prodrug of N(4)-Hydroxycytidine, a nucleoside-  
82 analogue substrate of the viral RNA-dependent RNA polymerase. It has a broad spectrum  
83 of activity against RNA viruses, including coronaviruses, and a high barrier to the  
84 development of viral resistance.<sup>9-11</sup> Its mechanism of action is distinct to remdesivir,

## Molnupiravir or nirmatrelvir-ritonavir for COVID-19

85 impairing viral RNA replication by facilitating ambiguous base pairing, leading to an  
86 accumulation of transversion mutations. In the MOVE-OUT trial, early treatment of high-  
87 risk unvaccinated patients with COVID-19 reduced the risk of hospitalisation or death by  
88 30% (risk ratio[RR] 0.70; 95% CI 0.49-0.99;  $p=0.045$ ), but no significant benefit was  
89 shown in the subsequent PANORAMIC trial among lower-risk, vaccinated patients  
90 infected with Omicron variants (RR 1.07; 95% CI 0.81-1.41;  $p=0.5$ ).<sup>12,13</sup> MOVE-IN is the  
91 only reported trial of molnupiravir in hospitalised patients, which included 304  
92 unvaccinated individuals.<sup>14</sup> This found no significant difference in the primary outcome of  
93 recovery by day 29 (84% molnupiravir group vs. 85% placebo group), or mortality (6%  
94 molnupiravir group vs. 3% placebo group), but was underpowered to rule out worthwhile  
95 improvements in either outcome.

96 Nirmatrelvir is an orally administered small-molecule inhibitor of the viral 3-chymotrypsin-  
97 like (3CL) protease, which is co-administered with ritonavir to enhance its  
98 pharmacokinetics.<sup>15</sup> In the EPIC-HR trial of high-risk unvaccinated patients with early  
99 COVID-19 it reduced the risk of hospitalisation or death by 88% (RR 0.12; 95% CI 0.06-  
100 0.25;  $p<0.0001$ ) although no significant benefit was present in the subsequent EPIC-SR  
101 trial of vaccinated and lower risk patients (RR 0.48; 95% CI 0.17-1.41;  $p=0.18$ ).<sup>3,16</sup> Only  
102 one trial has reported nirmatrelvir-ritonavir use in hospitalised patients, which included  
103 264 patients.<sup>17</sup> In this trial there was no significant difference in the primary outcome of  
104 28-day mortality (4% nirmatrelvir-ritonavir group vs. 6% standard treatment group), but it  
105 was underpowered to rule out a worthwhile benefit of treatment.

106

107 Here we report the results of independent evaluations of molnupiravir and nirmatrelvir-  
108 ritonavir versus usual care in the RECOVERY trial, a randomised, open-label platform  
109 trial evaluating treatments for patients hospitalised with COVID-19 pneumonia.

110

## 111 **METHODS**

### 112 **Study design and participants**

113 The Randomised Evaluation of COVID-19 therapy (RECOVERY) trial is an investigator-  
114 initiated, individually randomised, controlled, open-label, adaptive platform trial to  
115 evaluate the effects of potential treatments in patients hospitalised with COVID-19.  
116 Details of the trial design and results for other treatments have been published previously  
117 (dexamethasone, hydroxychloroquine, lopinavir-ritonavir, azithromycin, tocilizumab,  
118 convalescent plasma, colchicine, aspirin, casirivimab plus imdevimab, baricitinib,  
119 empagliflozin, dimethyl fumarate, and high-dose corticosteroids in hypoxic patients not  
120 requiring ventilatory support).<sup>4,18–29</sup> The trial was conducted at hospital organisations in  
121 the United Kingdom supported by the National Institute for Health and Care Research  
122 Clinical Research Network, as well as in South and Southeast Asia and Africa. Of these,  
123 75 hospitals in the UK, 2 in Nepal, and 2 in Indonesia enrolled participants in the  
124 molnupiravir comparison, and 32 UK hospitals enrolled participants in the nirmatrelvir-  
125 ritonavir comparison (appendix pp 2-31). The trial is coordinated by the Nuffield  
126 Department of Population Health at University of Oxford (Oxford, UK), the trial sponsor.  
127 The trial is conducted in accordance with the principles of the International Conference  
128 on Harmonisation–Good Clinical Practice guidelines and approved by the UK Medicines

129 and Healthcare products Regulatory Agency (MHRA) and the Cambridge East Research  
130 Ethics Committee (ref: 20/EE/0101). The protocol, statistical analysis plan, and additional  
131 information are available on the study website [www.recoverytrial.net](http://www.recoverytrial.net).

132 Patients admitted to hospital were eligible for the study if they had confirmed SARS-CoV-  
133 2 infection with a pneumonia syndrome thought to be related to COVID-19, and no  
134 medical history that might, in the opinion of the managing physician, put the patient at  
135 significant risk if they were to participate in the trial. Patients were excluded from the  
136 molnupiravir comparison if (i) they were pregnant or breastfeeding, or (ii) they had  
137 received molnupiravir during their current illness. Patients were excluded from the  
138 nirmatrelvir-ritonavir comparison if (i) they were in the first trimester of pregnancy, (ii) had  
139 severe liver impairment (Child-Pugh class C), (iii) had severe renal impairment (eGFR  
140  $<30\text{ml/min/1.73m}^2$ ), (iv) had received nirmatrelvir-ritonavir during their current illness, or  
141 (v) were receiving a concomitant medication with CYP3A4 dependent metabolism that  
142 risked a severe drug-drug interaction with nirmatrelvir-ritonavir. Children (age  $<18$  years)  
143 and those unable to take medication orally were excluded from both comparisons. If a  
144 study treatment was unavailable, or if the managing physician considered a study  
145 treatment to be either definitely indicated or definitely contraindicated, then patients were  
146 excluded from the relevant comparison. Written informed consent was obtained from all  
147 patients, or a legal representative if patients were too unwell or otherwise unable to  
148 provide informed consent.

#### 149 **Randomisation and masking**

## Molnupiravir or nirmatrelvir-ritonavir for COVID-19

150 Baseline data were collected using a web-based case report form that included  
151 demographics, level of respiratory support, major comorbidities, suitability of the study  
152 treatment for a particular patient, SARS-CoV-2 vaccination status, and study treatment  
153 availability at the study site (appendix pp 43-46). A serum sample and nose swab were  
154 collected at randomisation from UK patients and sent to central laboratories for testing.  
155 Serum was tested for anti-SARS-CoV-2 spike antibodies, anti-SARS-CoV-2 nucleocapsid  
156 antibodies, and SARS-CoV-2 nucleocapsid antigen using Roche Elecsys assays (Roche  
157 Diagnostics, Basel, Switzerland). Patients were classified as positive or negative for anti-  
158 spike and anti-nucleocapsid antibodies using manufacturer defined thresholds, and as  
159 positive or negative for serum nucleocapsid antigen using the study population median  
160 value (as this assay had not previously been validated on serum samples). Nose swabs  
161 were tested for SARS-CoV-2 RNA using TaqPath COVID-19 RT-PCR (Thermo Fisher  
162 Scientific, Massachusetts, US). Samples with sufficient concentration of viral RNA were  
163 sequenced using the ONT Midnight protocol (Oxford Nanopore Technologies, Oxford,  
164 UK).<sup>30</sup> Sequence data were used to detect mutations associated with resistance to  
165 molnupiravir or nirmatrelvir-ritonavir identified from literature searches. Further details of  
166 laboratory analyses are in the appendix (pp 32-33).

167 Patients could enter either one or both of the comparisons provided they were eligible.  
168 For each comparison they entered, patients were randomly assigned in a 1:1 ratio to  
169 either usual standard of care plus the relevant treatment or usual standard of care without  
170 the relevant treatment, using web-based simple (unstratified) randomisation with  
171 allocation concealed until after randomisation (appendix pp 41-43). Patients allocated to  
172 molnupiravir were to receive 800mg orally twice daily for 5 days. Patients allocated to



173 nirmatrelvir-ritonavir were to receive 300mg/100mg orally twice daily for 5 days, reduced  
174 to 150mg/100mg twice daily if they had moderate renal impairment (eGFR 30-  
175 59ml/min/1.73m<sup>2</sup>). In both comparisons the course was to be continued after discharge if  
176 required.

177 As a platform trial, and in a factorial design, patients could be simultaneously randomised  
178 to other concurrently evaluated treatment groups: (i) empagliflozin versus usual care, (ii)  
179 higher-dose corticosteroids versus usual care, (iii) sotrovimab versus usual care  
180 (appendix pp 41-42). Participants and local study staff were not masked to allocated  
181 treatment. Other than members of the Data Monitoring Committee, all individuals involved  
182 in the trial were masked to aggregated outcome data while recruitment and 28-day follow-  
183 up were ongoing.

184

## 185 **Procedures**

186 Follow-up nose swabs were collected from UK patients on day 3 and day 5 (counting the  
187 day of randomisation as day 1). These were analysed in the same manner as the baseline  
188 swab described above.

189 A single online follow-up form was completed when participants were discharged, had  
190 died or at 28 days after randomisation, whichever occurred earliest (appendix pp 47-55).  
191 Information was recorded on adherence to allocated study treatment, receipt of other  
192 COVID-19 treatments, duration of admission, receipt of respiratory or renal support, and  
193 vital status (including cause of death). In addition, in the UK, routine healthcare and

194 registry data were obtained, including information on vital status (with date and cause of  
195 death), discharge from hospital, receipt of respiratory support, or renal replacement  
196 therapy. For sites outside the UK a further case report form (appendix pp 56-57) collected  
197 vital status at day 28 (if not already reported on the initial follow-up form).

## 198 **Outcomes**

199 Outcomes were assessed at 28 days after randomisation, with further analyses specified  
200 at 6 months. The primary outcome was all-cause mortality at 28 days. Secondary  
201 outcomes were time to discharge from hospital, and, among patients not on invasive  
202 mechanical ventilation at randomisation, invasive mechanical ventilation (including extra-  
203 corporal membrane oxygenation) or death. Prespecified subsidiary clinical outcomes  
204 were use of non-invasive respiratory support, time to successful cessation of invasive  
205 mechanical ventilation (defined as cessation of invasive mechanical ventilation within,  
206 and survival to, 28 days), use of renal dialysis or haemofiltration, cause-specific mortality,  
207 bleeding events, thrombotic events, major cardiac arrhythmias, non-SARS-CoV-2  
208 infections, and metabolic complications (including ketoacidosis). Virological outcomes  
209 were viral RNA levels in nose swabs taken at day 3 and day 5, and the frequency of  
210 detection of resistance markers. Information on suspected serious adverse reactions was  
211 collected in an expedited fashion to comply with regulatory requirements.

212

## 213 **Sample size**

214 The intention for this comparison was to continue recruitment until sufficient primary  
215 outcomes had accrued to have 90% power to detect a proportional risk reduction of 20%  
216 at a two-sided significance level of 0.01.

217 Following the initial wave of Omicron infection in the UK in early 2022, the number of  
218 patients hospitalised with COVID-19 pneumonia reduced substantially in the UK, as did  
219 recruitment to both comparisons. Because of persistently low recruitment, the  
220 RECOVERY Trial Steering Committee decided to close both comparisons on 24<sup>th</sup> May  
221 2023 whilst still blinded to the results.

222

### 223 **Statistical Analysis**

224 The primary analysis for all outcomes was by intention-to-treat, comparing patients  
225 randomised to the study treatment with patients randomised to usual care but for whom  
226 that study treatment was both available and suitable as a treatment. For the primary  
227 outcome of 28-day mortality, the hazard ratio from an age- and respiratory status-adjusted  
228 Cox model was used to estimate the mortality rate ratio. We constructed Kaplan-Meier  
229 survival curves to display cumulative mortality over the 28-day period. We used the same  
230 Cox regression method to analyse time to hospital discharge and successful cessation of  
231 invasive mechanical ventilation, with patients who died in hospital right-censored on day  
232 29. Median time to discharge was derived from Kaplan-Meier estimates. For the pre-  
233 specified composite secondary outcome of progression to invasive mechanical ventilation  
234 or death within 28 days (among those not receiving invasive mechanical ventilation at  
235 randomisation), and the subsidiary clinical outcomes of receipt of invasive or non-invasive

236 ventilation, or use of haemodialysis or haemofiltration, the precise dates were not  
237 available and so a log-binomial regression model was used to estimate the risk ratio  
238 adjusted for age and respiratory status. SARS-CoV-2 viral RNA levels in nose-swabs  
239 were estimated with analysis of covariance (ANCOVA) using the log transformed values  
240 after adjustment for each participant's baseline value, age and level of respiratory support  
241 at randomisation.

242 Prespecified subgroup analyses were performed for the primary outcome using the  
243 statistical test of interaction (test for heterogeneity or trend), in accordance with the  
244 prespecified analysis plan, defined by the following characteristics at randomisation: age,  
245 sex, ethnicity, level of respiratory support, days since symptom onset, and use of  
246 corticosteroids (appendix p 135). Exploratory sub-group analyses were also performed  
247 by SARS-COV-2 antibody status (anti-S and anti-N), serum nucleocapsid antigen status,  
248 and use of other antivirals.

249 Estimates of rate and risk ratios are shown with 95% confidence intervals. All p-values  
250 are 2-sided and are shown without adjustment for multiple testing. The full database is  
251 held by the study team, which collected the data from study sites and performed the  
252 analyses at the Nuffield Department of Population Health, University of Oxford (Oxford,  
253 UK).

254 Analyses were performed using SAS version 9.4 and R version 3.4. The trial is registered  
255 with ISRCTN (50189673) and clinicaltrials.gov (NCT04381936).

256 **Role of the funding source**

257 Neither the study funders, nor the manufacturers of molnupiravir or nirmatrelvir-ritonavir,  
258 had any role in study design, data collection, data analysis, data interpretation, or writing  
259 of the report. Molnupiravir and nirmatrelvir-ritonavir were supplied by the UK government  
260 in the UK, and bought from commercial suppliers in Nepal and Indonesia. The  
261 corresponding authors had full access to all the data in the study and had final  
262 responsibility for the decision to submit for publication.

263

## 264 **RESULTS**

### 265 *Molnupiravir comparison*

266 Between 24 January 2022 and 24 May 2023, 923/1242 (74%) patients enrolled in  
267 RECOVERY at sites participating in the molnupiravir comparison were eligible to be  
268 randomly allocated to molnupiravir, of whom 445 were allocated molnupiravir and 478  
269 were allocated usual care without molnupiravir (figure 1A). The 319 RECOVERY patients  
270 not included in the molnupiravir comparison had similar characteristics to those included  
271 (webtable 1). The mean age of study participants in this comparison was 71.4 years (SD  
272 14.1), 767 (83%) had received a COVID-19 vaccine, and the median time since symptom  
273 onset was 5 days (IQR 3 to 9 days). 133/923 (14%) patients in the molnupiravir  
274 comparison simultaneously participated in the nirmatrelvir-ritonavir comparison. At  
275 randomisation, 809 (88%) patients were receiving corticosteroids, and 629 (68%) were  
276 receiving, or allocated to receive, a SARS-CoV-2 antiviral other than molnupiravir  
277 (including usual care remdesivir, and sotrovimab or nirmatrelvir-ritonavir allocated in

278 another RECOVERY comparison). 227 (25%) patients were anti-N seropositive and 705  
279 (76%) were anti-S seropositive.

280 The follow-up form was completed for 915 (99%) patients, and among them, 413/443  
281 (93%) in the molnupiravir group received at least one dose of molnupiravir, compared to  
282 0/472 (0%) in the usual care group (webtable 3). Primary and secondary outcome data  
283 are known for >99% of randomly assigned patients. There was no evidence of a  
284 significant difference in the proportion of patients who met the primary outcome of 28-day  
285 mortality between the two randomised groups (74 [17%] patients in the molnupiravir group  
286 vs. 79 [17%] patients in the usual care group; hazard ratio 0.93; 95% confidence interval  
287 [CI], 0.68-1.28;  $p=0.66$ ; table 2, figure 2A). We observed similar results in all pre-specified  
288 sub-groups, and in exploratory subgroups defined by serum SARS-CoV-2 antigen or  
289 antibody status, and use of other SARS-CoV-2 antiviral treatments (figure 3).

290 There was no evidence of a significant difference in the probability of being discharged  
291 alive within 28 days (72% vs. 74%, rate ratio 0.96, 95% CI 0.82 to 1.12,  $p=0.60$ ) (table 2).  
292 Among those not on invasive mechanical ventilation at baseline, the number of patients  
293 progressing to the pre-specified composite secondary outcome of invasive mechanical  
294 ventilation or death was similar in both groups (17% vs. 17%, risk ratio 0.96, 95% CI 0.73  
295 to 1.25,  $p=0.75$ ). Similar results were seen in all pre-specified subgroups of patients  
296 (webfigures 1 and 2).

297 We found no evidence of significant differences in prespecified subsidiary clinical  
298 outcomes or cause-specific mortality between groups (table 2, webtable 4). There were  
299 more episodes of hyperglycaemia requiring insulin in patients allocated to molnupiravir

300 versus usual care (7.4% vs 3.1%, absolute difference 4.3%, [95% CI 1.4-7.2] p=0.0038)  
301 (webtable 5). The rates of other safety outcomes were similar between groups, including  
302 new cardiac arrhythmia, thrombotic events, clinically significant bleeds, non-coronavirus  
303 infections, seizures, acute liver injury, and acute kidney injury (webtable 5). There were  
304 no reported suspected serious adverse reactions in patients allocated molnupiravir.

305 872/893 (98%) of UK patients had at least one nose swab available for analysis.  
306 Allocation to molnupiravir was associated with a lower baseline-adjusted viral load in nose  
307 swabs taken on day 5 (-0.48 log<sub>10</sub> copies/ml; 95% CI -0.80 to -0.16; p=0.0037), but not  
308 on day 3 (table 2). 622 (67%) patients had at least one successfully sequenced sample  
309 with ≥90% genome coverage, and of these 620 (>99%) were Omicron variants (primarily  
310 BA.1, BA.2, BA.5, and XBB). No candidate molnupiravir resistance mutations were  
311 identified from literature searches, so we were not able evaluate baseline or follow-up  
312 nose swabs for mutations associated with resistance.

313

#### 314 *Nirmatrelvir-ritonavir comparison*

315 Between 31 March 2022 and 24 May 2023, 137/494 (28%) of patients recruited at sites  
316 participating in the nirmatrelvir-ritonavir comparison were eligible to be randomly allocated  
317 to nirmatrelvir-ritonavir, of whom 68 were allocated nirmatrelvir-ritonavir and 69 allocated  
318 to usual care without nirmatrelvir-ritonavir (figure 1B). The 357 RECOVERY patients not  
319 included in the nirmatrelvir-ritonavir comparison had similar characteristics to those  
320 included (webtable 2). The mean age of study participants in this comparison was 72.5  
321 years (SD 13.9) , 116 (85%) had received a COVID-19 vaccine, and the median time

## Molnupiravir or nirmatrelvir-ritonavir for COVID-19

322 since symptom onset was 4 days (IQR 3 to 8 days). 133 (97%) patients participating in  
323 the nirmatrelvir-ritonavir comparison also participated in the molnupiravir comparison. At  
324 randomisation, 122 (89%) patients were receiving corticosteroids, and 111 (81%) were  
325 receiving, or allocated to receive, a SARS-CoV-2 antiviral other than nirmatrelvir-ritonavir  
326 (including usual care remdesivir, and sotrovimab or molnupiravir allocated in another  
327 RECOVERY comparison). 40 (29%) patients were anti-N seropositive and 112 (82%)  
328 were anti-S seropositive.

329 The follow-up form was completed for 135 (99%) patients, and among them, 60/67 (90%)  
330 in the nirmatrelvir-ritonavir group received at least one dose of nirmatrelvir-ritonavir,  
331 compared to 0/68 (0%) in the usual care group (webtable 3). Primary and secondary  
332 outcome data are known for >99% of randomly assigned patients. There was no evidence  
333 of a significant difference in the proportion of patients who met the primary outcome of  
334 28-day mortality between the two randomised groups (13 [19%] patients in the  
335 nirmatrelvir-ritonavir group vs. 13 [19%] patients in the usual care group; hazard ratio 1.02;  
336 95% CI, 0.47-2.23;  $p=0.96$ ; table 2, figure 2B). Because of low recruitment to this  
337 comparison, no subgroup analyses were performed.

338 There was no evidence of a significant difference in the probability of being discharged  
339 alive within 28 days (71% vs. 78%, rate ratio 0.80, 95% CI 0.54 to 1.20,  $p=0.29$ ) (table 2).  
340 Among those not on invasive mechanical ventilation at baseline, the number of patients  
341 progressing to the pre-specified composite secondary outcome of invasive mechanical  
342 ventilation or death was similar in both groups (21% vs. 19%, risk ratio 1.06, 95% CI 0.54  
343 to 2.08,  $p=0.86$ ).



344 We found no evidence of significant differences in prespecified subsidiary clinical  
345 outcomes or cause-specific mortality between groups (table 2, webtable 4). The rates of  
346 all safety outcomes were similar between groups (webtable 5). There were no reported  
347 suspected serious adverse reactions in patients allocated nirmatrelvir-ritonavir.

348 All patients had at least one nose swab available for analysis. Allocation to nirmatrelvir-  
349 ritonavir was associated with a significantly lower baseline-adjusted viral load in nose  
350 swabs taken on day 5 (-0.68 log<sub>10</sub> copies/ml; 95% CI -1.29 to -0.07; p=0.03), but not on  
351 day 3 (table 2). 97 (71%) patients had at least one sample successfully sequenced with  
352 ≥90% genome coverage, and of these 96 (99%) were Omicron variants. No sequenced  
353 samples contained mutations at the 20 nucleotide positions in the 3CL protease that had  
354 previously been associated with >2.5 fold median reduction in inhibition by nirmatrelvir.

355

## 356 **DISCUSSION**

357 In these two reported evaluations from the RECOVERY trial, among patients admitted to  
358 hospital for severe COVID-19, neither molnupiravir nor nirmatrelvir-ritonavir was found to  
359 reduce mortality, duration of hospitalisation, or the risk of being ventilated or dying for  
360 those not on ventilation at baseline. However, both comparisons lacked statistical power  
361 to exclude modest differences in these outcomes.

362 Previous trials have indicated the potential benefit of antiviral treatment with nMAbs or  
363 remdesivir in hospitalised patients, but randomised evidence has been inadequate for  
364 molnupiravir and nirmatrelvir-ritonavir, two widely available antivirals with efficacy in early

365 infection. For each drug, only one other randomised trial in hospitalised COVID-19  
366 patients has been reported to date, but neither were large enough to detect plausibly  
367 moderate benefits of treatment.<sup>14,17</sup> The present RECOVERY comparisons were both  
368 stopped because of low recruitment before they had reached the planned sample size,  
369 with 923 patients recruited to the molnupiravir comparison and 137 recruited to the  
370 nirmatrelvir-ritonavir comparison. Our results do not suggest any benefit in adding these  
371 antivirals to routine care, but limited recruitment means we cannot exclude a benefit.

372 The incidence of COVID-19 pneumonia has reduced substantially following widespread  
373 vaccination starting in 2021 and the global dominance of Omicron SARS-CoV-2 variants  
374 in 2022. In this context, infection with SARS-CoV-2 in hospitalised patients is often an  
375 incidental finding, or is associated with non-respiratory illness, and the benefits of antiviral  
376 therapy in this setting may be limited. By contrast, RECOVERY only included patients  
377 with pneumonia thought to be related to COVID-19. In over 80% of participants this had  
378 developed despite previous COVID-19 vaccination, and in keeping with this only around  
379 a quarter of participants were anti-spike antibody negative at baseline, but around three-  
380 quarters were anti-nucleocapsid antibody negative, indicating that this was their first  
381 SARS-CoV-2 infection.

382 The power to perform subgroup analyses was limited even in the molnupiravir  
383 comparison, and here there was no strong signal of a differential effect of treatment in  
384 patients by antibody status, level of serum viral antigen, use of other antiviral treatments,  
385 symptom duration, or severity of illness. In patients allocated molnupiravir there was an  
386 excess of hyperglycaemia requiring insulin compared to usual care, reported in 33 vs 15  
387 patients. An excess of hyperglycaemia was also reported in the MOVE-IN trial (9 vs 1

388 events), but there is no apparent mechanism to explain this, and these may represent  
389 chance findings. The increased viral clearance in day 5 nose swabs seen in those  
390 allocated molnupiravir is in keeping with its known antiviral activity, and with results from  
391 trials in early infection, although this has not previously been demonstrated in hospitalised  
392 patients.<sup>12,14,31,32</sup> Nevertheless, this reduction in viral load was not shown in this trial to  
393 translate into clinical benefit.

394 Recruitment to the nirmatrelvir-ritonavir comparison was substantially lower than the  
395 molnupiravir comparison, reflecting its introduction just after the initial wave of Omicron  
396 in the UK in early 2022, the involvement of fewer hospital sites, and a high proportion of  
397 patients for whom it was considered unsuitable. Reasons for unsuitability were not  
398 systematically recorded, but this was frequently related to potential interactions between  
399 ritonavir and concomitant medications. We were therefore unable to reliably assess  
400 whether nirmatrelvir improves clinical outcomes, although a reduction in viral load among  
401 participants allocated nirmatrelvir was observed.

402 Strengths of this trial include that it was randomised, had broad eligibility criteria, baseline  
403 characterisation of markers of SARS-CoV-2 immune status and infection, and more than  
404 99% of patients were followed up for the primary outcome. However, the limited sample  
405 size does not allow us to exclude modest benefits of the treatments tested. Also, use of  
406 other antiviral treatments was common in both comparisons, and it is possible that the  
407 treatments tested may have had a greater effect in the absence of other antivirals.  
408 Although this randomised trial is open label (i.e. participants and local hospital staff were  
409 aware of the assigned treatment), the primary and secondary outcomes are unambiguous  
410 and were ascertained without bias through linkage to routine health records in the large

## Molnupiravir or nirmatrelvir-ritonavir for COVID-19

411 majority of patients. However, detailed information on radiological or physiological  
412 outcomes was not collected

413 The RECOVERY trial only studied patients who had been hospitalised with COVID-19  
414 and, therefore, is not able to provide any evidence on the safety and efficacy of these  
415 antivirals used in other patient groups. Due to the recommendation that both drugs be  
416 taken orally, and not via a gastric feeding tube, there were few patients recruited requiring  
417 invasive mechanical ventilation.

418 In summary, the results of this randomised trial do not support the use of molnupiravir or  
419 nirmatrelvir-ritonavir as a treatment for adults hospitalised with COVID-19.

420

421 **Contributors**

422 This manuscript was initially drafted by LP, RH, PWH and MJL, further developed by the  
423 Writing Committee, and approved by all members of the trial steering committee. PWH  
424 and MJL vouch for the data and analyses, and for the fidelity of this report to the study  
425 protocol and data analysis plan. PWH, JKB, MB, SNF, TJ, EJ, KJ, MK, WSL, AMo, AMuk,  
426 AMum, JN, KR, GT, MM, RH, and MJL designed the trial and study protocol. MM, MC, G  
427 P-A, LP, RS, DG, FH, PD, NE, JM, PH, DC, GC, SS, HE, the Data Linkage team at the  
428 RECOVERY Coordinating Centre, and the Health Records and Local Clinical Centre staff  
429 listed in the appendix collected the data. NS did the statistical analysis. All authors  
430 contributed to data interpretation and critical review and revision of the manuscript. PWH  
431 and MJL had access to the study data and had final responsibility for the decision to  
432 submit for publication.

433

434 **Writing Committee (on behalf of the RECOVERY Collaborative Group):**

435 Peter W Horby\*, Natalie Staplin\*, Leon Peto\*, Jonathan R Emberson, Mark Campbell,  
436 Guilherme Pessoa-Amorim, Buddha Basnyat, Louise Thwaites, Rogier van Doorn, Raph  
437 L Hamers, Jeremy Nel, John Amuasi, Richard Stewart, Dipansu Ghosh, Fergus Hamilton,  
438 Purav Desai, Nicholas Easom, Jaydip Majumdar, Paul Hine, David Chadwick, Graham  
439 Cooke, Sara Sharp, Hanif Esmail, J Kenneth Baillie, Maya Buch, Saul N Faust, Thomas  
440 Jaki, Edmund Juszcak, Katie Jeffery, Marian Knight, Wei Shen Lim, Alan Montgomery,  
441 Aparna Mukherjee, Andrew Mumford, Kathryn Rowan, Guy Thwaites, Marion Mafham†,  
442 Richard Haynes†, Martin J Landray†.

443 \*,† equal contribution

444 **Data Monitoring Committee**

445 Peter Sandercock, Janet Darbyshire, David DeMets, Robert Fowler, David Laloo,  
446 Mohammed Munavvar, Janet Wittes.

447 **Declaration of interests**

448 The authors have no conflict of interest or financial relationships relevant to the submitted  
449 work to disclose. No form of payment was given to anyone to produce the manuscript. All  
450 authors have completed and submitted the ICMJE Form for Disclosure of Potential  
451 Conflicts of Interest. The Nuffield Department of Population Health at the University of  
452 Oxford has a staff policy of not accepting honoraria or consultancy fees directly or  
453 indirectly from industry (see [https://www.ndph.ox.ac.uk/files/about/ndph-independence-](https://www.ndph.ox.ac.uk/files/about/ndph-independence-of-research-policy-jun-20.pdf)  
454 [of-research-policy-jun-20.pdf](https://www.ndph.ox.ac.uk/files/about/ndph-independence-of-research-policy-jun-20.pdf)).

455 **Data sharing**

456 The protocol, consent form, statistical analysis plan, definition & derivation of clinical  
457 characteristics & outcomes, training materials, regulatory documents, and other relevant  
458 study materials are available online at [www.recoverytrial.net](http://www.recoverytrial.net). As described in the protocol,  
459 the Trial Steering Committee will facilitate the use of the study data and approval will not  
460 be unreasonably withheld. Deidentified participant data will be made available to bona  
461 fide researchers registered with an appropriate institution within 3 months of publication.  
462 However, the Steering Committee will need to be satisfied that any proposed publication  
463 is of high quality, honours the commitments made to the study participants in the consent  
464 documentation and ethical approvals, and is compliant with relevant legal and regulatory  
465 requirements (e.g. relating to data protection and privacy). The Steering Committee will  
466 have the right to review and comment on any draft manuscripts prior to publication. Data  
467 will be made available in line with the policy and procedures described at:  
468 <https://www.ndph.ox.ac.uk/data-access>. Those wishing to request access should  
469 complete the form at  
470 [https://www.ndph.ox.ac.uk/files/about/data\\_access\\_enquiry\\_form\\_13\\_6\\_2019.docx](https://www.ndph.ox.ac.uk/files/about/data_access_enquiry_form_13_6_2019.docx)  
471 and e-mailed to: [data.access@ndph.ox.ac.uk](mailto:data.access@ndph.ox.ac.uk)

472

473 **Acknowledgements**

474 Above all, we would like to thank the patients who participated in this trial. We would also  
475 like to thank the many doctors, nurses, pharmacists, other allied health professionals, and  
476 research administrators at NHS hospital organisations across the whole of the UK,

477 supported by staff at the National Institute of Health and Care Research (NIHR) Clinical  
478 Research Network, NHS DigiTrials, UK Health Security Agency, Department of Health &  
479 Social Care, the Intensive Care National Audit & Research Centre, Public Health  
480 Scotland, National Records Service of Scotland, the Secure Anonymised Information  
481 Linkage (SAIL) at University of Swansea, and the NHS in England, Scotland, Wales and  
482 Northern Ireland.

483 The RECOVERY trial was supported by grants to the University of Oxford from UK  
484 Research and Innovation (UKRI) and NIHR (MC\_PC\_19056), the Wellcome Trust (Grant  
485 Ref: 222406/Z/20/Z) through the COVID-19 Therapeutics Accelerator, and by core  
486 funding provided by the NIHR Oxford Biomedical Research Centre, the Wellcome  
487 Trust, the Bill and Melinda Gates Foundation, the Foreign, Commonwealth and  
488 Development Office, Health Data Research UK, the Medical Research Council, the NIHR  
489 Health Protection Unit in Emerging and Zoonotic Infections, and NIHR Clinical Trials Unit  
490 Support Funding. TJ is supported by grants from UK Medical Research Council  
491 (MC\_UU\_0002/14 and MC\_UU\_00040/03). WSL is supported by core funding provided  
492 by NIHR Nottingham Biomedical Research Centre.

493 The views expressed in this publication are those of the authors and not necessarily those  
494 of the NHS, the NIHR, or the UK Department of Health and Social Care.

495 **Conflicts of interest**

496 No form of payment was given to anyone to produce the manuscript. The Nuffield  
497 Department of Population Health at the University of Oxford has a staff policy of not  
498 accepting honoraria or consultancy fees directly or indirectly from industry (see



499 [https://www.ndph.ox.ac.uk/files/about/ndph-independence-of-research-policy-jun-](https://www.ndph.ox.ac.uk/files/about/ndph-independence-of-research-policy-jun-20.pdf)  
500 [20.pdf](https://www.ndph.ox.ac.uk/files/about/ndph-independence-of-research-policy-jun-20.pdf))

501 **References**

- 502 1 Weinreich DM, Sivapalasingam S, Norton T, *et al.* REGN-COV2, a Neutralizing  
503 Antibody Cocktail, in Outpatients with Covid-19. *N Engl J Med* 2021; **384**: 238–51.
- 504 2 Gottlieb RL, Vaca CE, Paredes R, *et al.* Early Remdesivir to Prevent Progression  
505 to Severe Covid-19 in Outpatients. *N Engl J Med* 2022; **386**: 305–15.
- 506 3 Hammond J, Leister-Tebbe H, Gardner A, *et al.* Oral Nirmatrelvir for High-Risk,  
507 Nonhospitalized Adults with Covid-19. *N Engl J Med* 2022; published online Feb 16.  
508 DOI:10.1056/NEJMoa2118542.
- 509 4 RECOVERY Collaborative Group. Casirivimab and imdevimab in patients  
510 admitted to hospital with COVID-19 (RECOVERY): a randomised, controlled, open-  
511 label, platform trial. *Lancet Lond Engl* 2022; **399**: 665–76.
- 512 5 Bergeri I, Whelan MG, Ware H, *et al.* Global SARS-CoV-2 seroprevalence from  
513 January 2020 to April 2022: A systematic review and meta-analysis of standardized  
514 population-based studies. *PLoS Med* 2022; **19**: e1004107.
- 515 6 COVID-19 vaccine quarterly surveillance reports (September 2021 to April 2024).  
516 GOV.UK. 2024; published online April 25.  
517 [https://www.gov.uk/government/publications/covid-19-vaccine-weekly-surveillance-](https://www.gov.uk/government/publications/covid-19-vaccine-weekly-surveillance-reports)  
518 [reports](https://www.gov.uk/government/publications/covid-19-vaccine-weekly-surveillance-reports) (accessed May 10, 2024).
- 519 7 WHO Solidarity Trial Consortium. Remdesivir and three other drugs for  
520 hospitalised patients with COVID-19: final results of the WHO Solidarity randomised trial  
521 and updated meta-analyses. *Lancet Lond Engl* 2022; **399**: 1941–53.
- 522 8 Amstutz A, Speich B, Mentré F, *et al.* Effects of remdesivir in patients  
523 hospitalised with COVID-19: a systematic review and individual patient data meta-  
524 analysis of randomised controlled trials. *Lancet Respir Med* 2023; **11**: 453–64.
- 525 9 Yoon J-J, Toots M, Lee S, *et al.* Orally Efficacious Broad-Spectrum  
526 Ribonucleoside Analog Inhibitor of Influenza and Respiratory Syncytial Viruses.  
527 *Antimicrob Agents Chemother* 2018; **62**: e00766-18.
- 528 10 Sheahan TP, Sims AC, Zhou S, *et al.* An orally bioavailable broad-spectrum  
529 antiviral inhibits SARS-CoV-2 in human airway epithelial cell cultures and multiple  
530 coronaviruses in mice. *Sci Transl Med* 2020; **12**: eabb5883.

## Molnupiravir or nirmatrelvir-ritonavir for COVID-19

- 531 11 Strizki JM, Gaspar JM, Howe JA, *et al.* Molnupiravir maintains antiviral activity  
532 against SARS-CoV-2 variants and exhibits a high barrier to the development of  
533 resistance. *Antimicrob Agents Chemother* 2024; **68**: e0095323.
- 534 12 Jayk Bernal A, Gomes da Silva MM, Musungaie DB, *et al.* Molnupiravir for Oral  
535 Treatment of Covid-19 in Nonhospitalized Patients. *N Engl J Med* 2022; **386**: 509–20.
- 536 13 Butler CC, Hobbs FDR, Gbinigie OA, *et al.* Molnupiravir plus usual care versus  
537 usual care alone as early treatment for adults with COVID-19 at increased risk of  
538 adverse outcomes (PANORAMIC): an open-label, platform-adaptive randomised  
539 controlled trial. *Lancet Lond Engl* 2023; **401**: 281–93.
- 540 14 Arribas JR, Bhagani S, Lobo SM, *et al.* Randomized Trial of Molnupiravir or  
541 Placebo in Patients Hospitalized with Covid-19. *NEJM Evid* 2022; **1**: EVIDoa2100044.
- 542 15 Owen DR, Allerton CMN, Anderson AS, *et al.* An oral SARS-CoV-2 Mpro inhibitor  
543 clinical candidate for the treatment of COVID-19. *Science* 2021; **374**: 1586–93.
- 544 16 Hammond J, Fountaine RJ, Yunis C, *et al.* Nirmatrelvir for Vaccinated or  
545 Unvaccinated Adult Outpatients with Covid-19. *N Engl J Med* 2024; **390**: 1186–95.
- 546 17 Liu J, Pan X, Zhang S, *et al.* Efficacy and safety of Paxlovid in severe adult  
547 patients with SARS-Cov-2 infection: a multicenter randomized controlled study. *Lancet*  
548 *Reg Health West Pac* 2023; **33**: 100694.
- 549 18 RECOVERY Collaborative Group, Horby P, Lim WS, *et al.* Dexamethasone in  
550 Hospitalized Patients with Covid-19. *N Engl J Med* 2021; **384**: 693–704.
- 551 19 RECOVERY Collaborative Group, Horby P, Mafham M, *et al.* Effect of  
552 Hydroxychloroquine in Hospitalized Patients with Covid-19. *N Engl J Med* 2020; **383**:  
553 2030–40.
- 554 20 RECOVERY Collaborative Group. Lopinavir-ritonavir in patients admitted to  
555 hospital with COVID-19 (RECOVERY): a randomised, controlled, open-label, platform  
556 trial. *Lancet Lond Engl* 2020; **396**: 1345–52.
- 557 21 RECOVERY Collaborative Group. Azithromycin in patients admitted to hospital  
558 with COVID-19 (RECOVERY): a randomised, controlled, open-label, platform trial.  
559 *Lancet Lond Engl* 2021; **397**: 605–12.
- 560 22 RECOVERY Collaborative Group. Tocilizumab in patients admitted to hospital  
561 with COVID-19 (RECOVERY): a randomised, controlled, open-label, platform trial.  
562 *Lancet Lond Engl* 2021; **397**: 1637–45.
- 563 23 RECOVERY Collaborative Group. Convalescent plasma in patients admitted to  
564 hospital with COVID-19 (RECOVERY): a randomised controlled, open-label, platform  
565 trial. *Lancet Lond Engl* 2021; **397**: 2049–59.

## Molnupiravir or nirmatrelvir-ritonavir for COVID-19

- 566 24 RECOVERY Collaborative Group. Colchicine in patients admitted to hospital with  
567 COVID-19 (RECOVERY): a randomised, controlled, open-label, platform trial. *Lancet*  
568 *Respir Med* 2021; **9**: 1419–26.
- 569 25 RECOVERY Collaborative Group. Aspirin in patients admitted to hospital with  
570 COVID-19 (RECOVERY): a randomised, controlled, open-label, platform trial. *Lancet*  
571 *Lond Engl* 2022; **399**: 143–51.
- 572 26 RECOVERY Collaborative Group. Baricitinib in patients admitted to hospital with  
573 COVID-19 (RECOVERY): a randomised, controlled, open-label, platform trial and  
574 updated meta-analysis. *Lancet Lond Engl* 2022; **400**: 359–68.
- 575 27 RECOVERY Collaborative Group. Empagliflozin in patients admitted to hospital  
576 with COVID-19 (RECOVERY): a randomised, controlled, open-label, platform trial.  
577 *Lancet Diabetes Endocrinol* 2023; **11**: 905–14.
- 578 28 RECOVERY Collaborative Group, Horby PW, Peto L, *et al*. Dimethyl fumarate in  
579 patients admitted to hospital with COVID-19 (RECOVERY): a randomised, controlled,  
580 open-label, platform trial. *Nat Commun* 2024; **15**: 924.
- 581 29 RECOVERY Collaborative Group. Higher dose corticosteroids in patients  
582 admitted to hospital with COVID-19 who are hypoxic but not requiring ventilatory  
583 support (RECOVERY): a randomised, controlled, open-label, platform trial. *Lancet Lond*  
584 *Engl* 2023; : S0140-6736(23)00510-X.
- 585 30 Constantinides B, Webster H, Gentry J, *et al*. Rapid turnaround multiplex  
586 sequencing of SARS-CoV-2: comparing tiling amplicon protocol performance. *medRxiv*  
587 2022; : 2021.12.28.21268461.
- 588 31 Khoo SH, FitzGerald R, Saunders G, *et al*. Molnupiravir versus placebo in  
589 unvaccinated and vaccinated patients with early SARS-CoV-2 infection in the UK  
590 (AGILE CST-2): a randomised, placebo-controlled, double-blind, phase 2 trial. *Lancet*  
591 *Infect Dis* 2023; **23**: 183–95.
- 592 32 Fischer W, Eron JJ, Holman W, *et al*. Molnupiravir, an Oral Antiviral Treatment  
593 for COVID-19. 2021; : 2021.06.17.21258639.
- 594
- 595

596 **Table 1: Baseline characteristics**

	Molnupiravir vs usual care		Nirmatrelvir-ritonavir vs usual care	
	Molnupiravir (n=445)	Usual care (n=478)	Nirmatrelvir- ritonavir (n=68)	Usual care (n=69)
Age, years	71.2 (14.3)	71.6 (14.0)	75.8 (13.1)	69.3 (14.1)
<70	168 (38%)	194 (41%)	18 (26%)	30 (43%)
≥70 to <80	140 (31%)	142 (30%)	26 (38%)	22 (32%)
≥80	137 (31%)	142 (30%)	24 (35%)	17 (25%)
Sex				
Male	257 (58%)	290 (61%)	41 (60%)	36 (52%)
Female*	188 (42%)	188 (39%)	27 (40%)	33 (48%)
Not recorded	0 (0%)	0 (0%)	0 (0%)	0 (0%)
Country				
Indonesia	4 (1%)	8 (2%)	0 (0%)	0 (0%)
Nepal	7 (2%)	11 (2%)	0 (0%)	0 (0%)
UK	434 (98%)	459 (96%)	68 (100%)	69 (100%)
Ethnicity				
White	395 (89%)	414 (87%)	61 (90%)	60 (87%)
Black, Asian, and minority ethnic	31 (7%)	46 (10%)	3 (4%)	4 (6%)
Unknown	19 (4%)	18 (4%)	4 (6%)	5 (7%)
Number of days since symptom onset	5 (3-9)	5 (3-10)	4 (3-9)	5 (3-8)
Number of days since hospitalisation	2 (1-4)	2 (1-4)	2 (1-4)	2 (1-5)
Respiratory support received				
None	66 (15%)	94 (20%)	13 (19%)	8 (12%)
Simple oxygen	293 (66%)	309 (65%)	40 (59%)	52 (75%)
Non-invasive ventilation	86 (19%)	73 (15%)	15 (22%)	9 (13%)
Invasive mechanical ventilation	0 (0%)	2 (<0.5%)	0 (0%)	0 (0%)
Biochemistry				
C-reactive protein, mg/L	65 (25-135)	73 (33-137)	93 (41-148)	76 (33-167)
Creatinine, µmol/L	81 (64-112)	79 (64-110)	76 (64-104)	72 (59-97)
Previous diseases				
Diabetes	122 (27%)	126 (26%)	13 (19%)	20 (29%)
Heart disease	146 (33%)	163 (34%)	11 (16%)	17 (25%)
Chronic lung disease	183 (41%)	197 (41%)	22 (32%)	31 (45%)
Tuberculosis	1 (<0.5%)	1 (<0.5%)	0 (0%)	1 (1%)
HIV	4 (1%)	2 (<0.5%)	0 (0%)	1 (1%)
Severe liver disease†	11 (2%)	6 (1%)	0 (0%)	0 (0%)
Severe kidney impairment‡	33 (7%)	44 (9%)	0 (0%)	0 (0%)
Severely immunocompromised§	96 (22%)	87 (18%)	14 (21%)	15 (22%)
Any of the above	335 (75%)	375 (78%)	42 (62%)	55 (80%)
SARS-CoV-2 PCR test result				
Positive	445 (100%)	478 (100%)	68 (100%)	69 (100%)
Negative	0 (0%)	0 (0%)	0 (0%)	0 (0%)
Unknown	0 (0%)	0 (0%)	0 (0%)	0 (0%)
Received a COVID-19 vaccine	376 (84%)	391 (82%)	57 (84%)	59 (86%)
Use of other treatments				
Corticosteroids	389 (87%)	420 (88%)	59 (87%)	63 (91%)
Remdesivir	178 (40%)	194 (41%)	27 (40%)	31 (45%)
Tocilizumab	49 (11%)	56 (12%)	12 (18%)	13 (19%)
Plan to use tocilizumab within the next 24 hours	40 (9%)	32 (7%)	2 (3%)	8 (12%)
Randomly assigned treatments in RECOVERY				
High dose steroids	69 (16%)	87 (18%)	0 (0%)	0 (0%)
Empagliflozin	143 (32%)	138 (29%)	19 (28%)	20 (29%)
Sotrovimab	199 (45%)	221 (46%)	30 (44%)	35 (51%)

## Molnupiravir or nirmatrelvir-ritonavir for COVID-19

	Molnupiravir vs usual care		Nirmatrelvir-ritonavir vs usual care	
	Molnupiravir (n=445)	Usual care (n=478)	Nirmatrelvir- ritonavir (n=68)	Usual care (n=69)
Molnupiravir	445 (100%)	0 (0%)	34 (50%)	32 (46%)
Nirmatrelvir-ritonavir	34 (8%)	33 (7%)	68 (100%)	0 (0%)
Viral load in baseline nose swab				
Median level (Log viral copies/ml)	6 (4-7)	6 (4-7)	6 (4-7)	6 (4-7)
Antigen status				
Positive	212 (48%)	226 (47%)	38 (56%)	35 (51%)
Negative	202 (45%)	212 (44%)	27 (40%)	34 (49%)
Unknown	31 (7%)	40 (8%)	3 (4%)	0 (0%)
Serostatus (anti N)				
Positive	114 (26%)	113 (24%)	21 (31%)	19 (28%)
Negative	301 (68%)	325 (68%)	44 (65%)	50 (72%)
Unknown	30 (7%)	40 (8%)	3 (4%)	0 (0%)
Serostatus (anti S)				
Positive	334 (75%)	371 (78%)	53 (78%)	59 (86%)
Negative	80 (18%)	67 (14%)	12 (18%)	10 (14%)
Unknown	31 (7%)	40 (8%)	3 (4%)	0 (0%)

Results are count (%), mean ± standard deviation, or median (inter-quartile range). \*Includes 0 pregnant women. †Defined as requiring ongoing specialist care. ‡Defined as estimated glomerular filtration rate <30 mL/min/1.73m<sup>2</sup> §In the opinion of the managing clinician.

Molnupiravir or nirmatrelvir-ritonavir for COVID-19

**Table 2: Effect of allocation to molnupiravir and nirmatrelvir-ritonavir on key study outcomes**

	Molnupiravir vs Usual care				Nirmatrelvir-ritonavir vs Usual care			
	Molnupiravir (n=445)	Usual care (n=478)	RR or mean difference (95% CI)	p value	Nirmatrelvir- ritonavir (n=68)	Usual care (n=69)	RR or mean difference (95% CI)	p value
<b>Primary outcome:</b>								
28-day mortality	74 (17%)	79 (17%)	0.93 (0.68-1.28)	0.66	13 (19%)	13 (19%)	1.02 (0.47-2.23)	0.96
<b>Secondary outcomes:</b>								
Median time to being discharged alive, days	10 (6 to >28)	9 (5 to >28)			10 (6 to >28)	8 (5 to 21)		
Discharged from hospital within 28 days	319 (72%)	354 (74%)	0.96 (0.82-1.12)	0.60	48 (71%)	54 (78%)	0.80 (0.54-1.20)	0.29
Receipt of invasive mechanical ventilation or death*	77/445 (17%)	81/476 (17%)	0.96 (0.73-1.25)	0.75	14/68 (21%)	13/69 (19%)	1.06 (0.54-2.08)	0.86
Invasive mechanical ventilation	8/445 (2%)	6/476 (1%)	1.27 (0.45-3.60)	0.65	1/68 (1%)	1/69 (1%)	-	-
Death	74/445 (17%)	78/476 (16%)	0.96 (0.73-1.26)	0.77	13/68 (19%)	13/69 (19%)	0.98 (0.49-1.94)	0.94
<b>Subsidiary clinical outcomes</b>								
Receipt of ventilation†	38/359 (11%)	34/403 (8%)	1.24 (0.80-1.92)	0.34	4/53 (8%)	10/60 (17%)	0.56 (0.18-1.73)	0.31
Non-invasive ventilation	35/359 (10%)	34/403 (8%)	1.14 (0.73-1.78)	0.58	4/53 (8%)	10/60 (17%)	0.56 (0.18-1.73)	0.31
Invasive mechanical ventilation	5/359 (1%)	1/403 (0%)	5.66 (0.66-48.37)	0.11	0/53 (0%)	1/60 (2%)	-	-
Successful cessation of invasive mechanical ventilation‡	0/0	0/2 (0%)	-	-	0/0	0/0	-	-
Renal replacement therapy§	5/436 (1%)	9/469 (2%)	0.62 (0.20-1.86)	0.39	0/68 (0%)	1/69 (1%)	-	-
<b>Virological outcomes</b>								
Baseline-adjusted viral load (log copies/ml) on day 3	4.36 (0.09)	4.48 (0.09)	-0.13 (-0.38, 0.12)	0.32	4.04 (0.24)	4.41 (0.22)	-0.36 (-0.99, 0.26)	0.26
Baseline-adjusted viral load (log copies/ml) on day 5	3.51 (0.10)	3.99 (0.13)	-0.48 (-0.80, -0.16)	0.0037	2.90 (0.22)	3.57 (0.22)	-0.68 (-1.29, -0.07)	0.03

RR=Hazard ratio for the outcomes of 28-day mortality and hospital discharge, and risk ratio for the outcome of receipt of invasive mechanical ventilation or death (and its subcomponents). CI=confidence interval. \*Analyses exclude those on invasive mechanical ventilation at randomization. †Analyses exclude those on any form of ventilation at randomisation. ‡Analyses restricted to those on invasive mechanical ventilation at randomisation. §Analyses exclude those on haemodialysis or haemofiltration at randomisation.

601 **Figures**

602 **Figure 1A: Trial profile**

603 ITT=intention to treat. Drug unavailability and unsuitability are not mutually exclusive.

604 \*Number recruited overall during period that adult participants could be recruited into  
605 molnupiravir comparison.

606 **Figure 1B: Trial profile**

607 ITT=intention to treat. Drug unavailability and unsuitability are not mutually exclusive.

608 \*Number recruited overall during period that adult participants could be recruited into  
609 nirmatrelvir-ritonavir comparison.

610 **Figure 2A: Effect of allocation to molnupiravir on 28-day mortality**

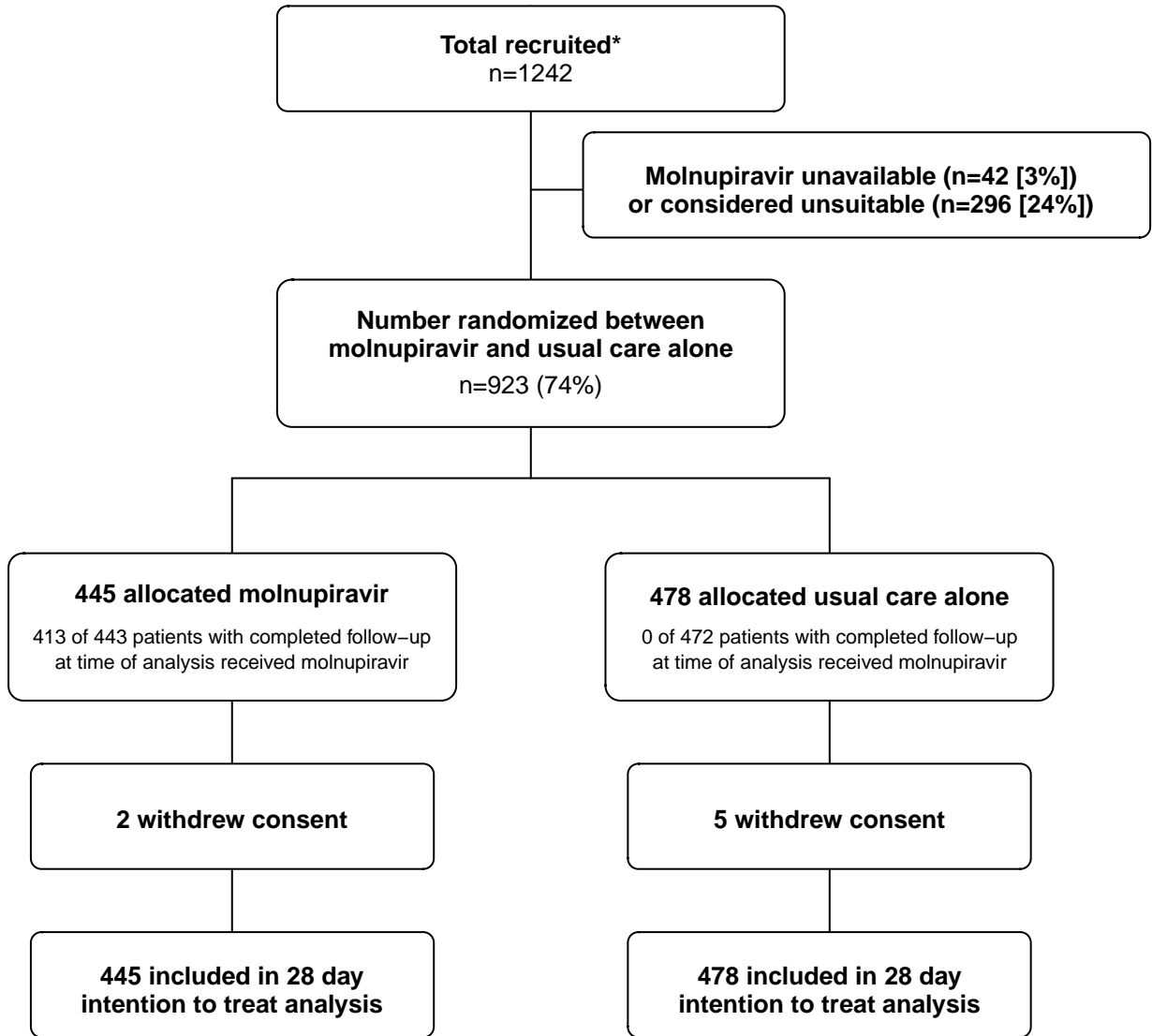
611 **Figure 2B: Effect of allocation to nirmatrelvir-ritonavir on 28-day mortality**

612 **Figure 3: Effect of allocation to molnupiravir on 28-day mortality by baseline  
613 characteristics**

614 Subgroup-specific rate ratio estimates are represented by squares (with areas of the  
615 squares proportional to the amount of statistical information) and the lines through them  
616 correspond to the 95% CIs. The ethnicity, days since onset and use of corticosteroids  
617 subgroups exclude those with missing data, but these patients are included in the overall  
618 summary diamond.

619

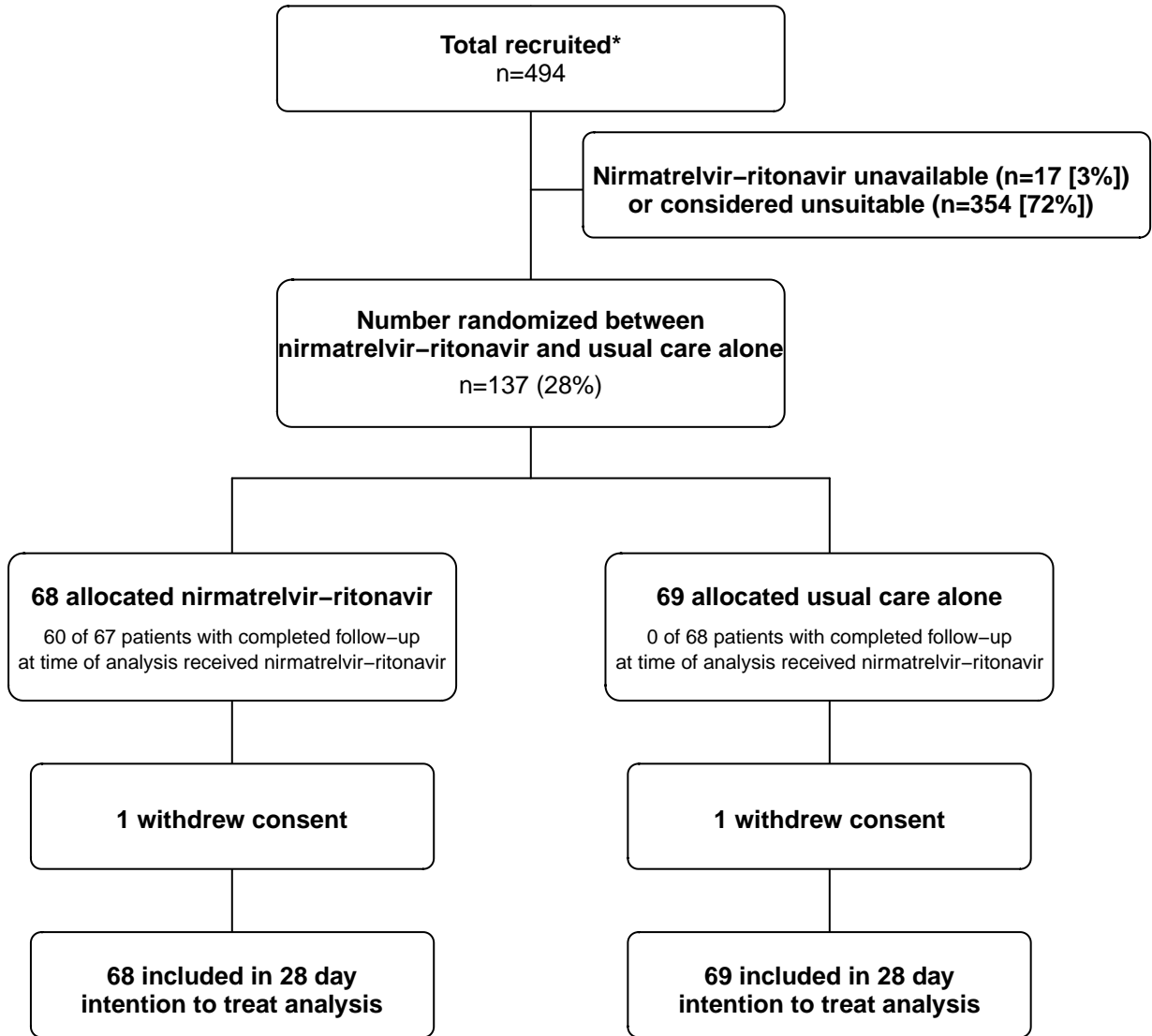
**Figure 1A: Trial profile for molnupiravir comparison**



ITT=intention to treat. \*Number recruited overall during period that adult participants could be recruited into molnupiravir comparison.



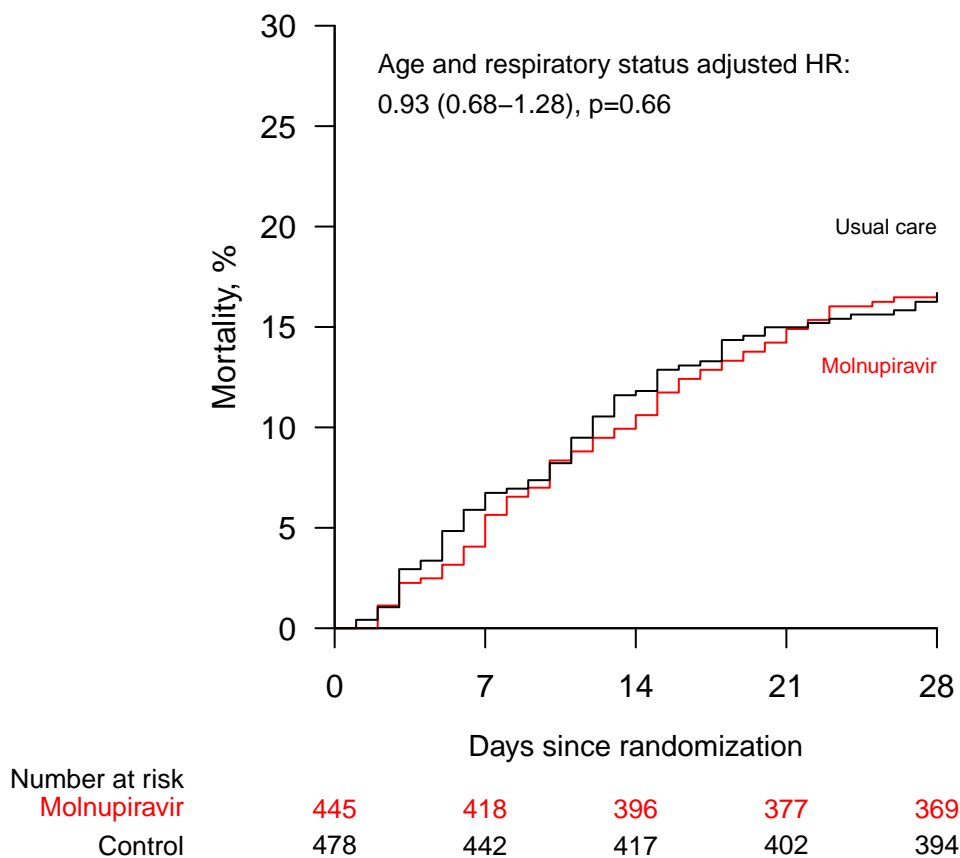
**Figure 1B: Trial profile for nirmatrelvir–ritonavir comparison**



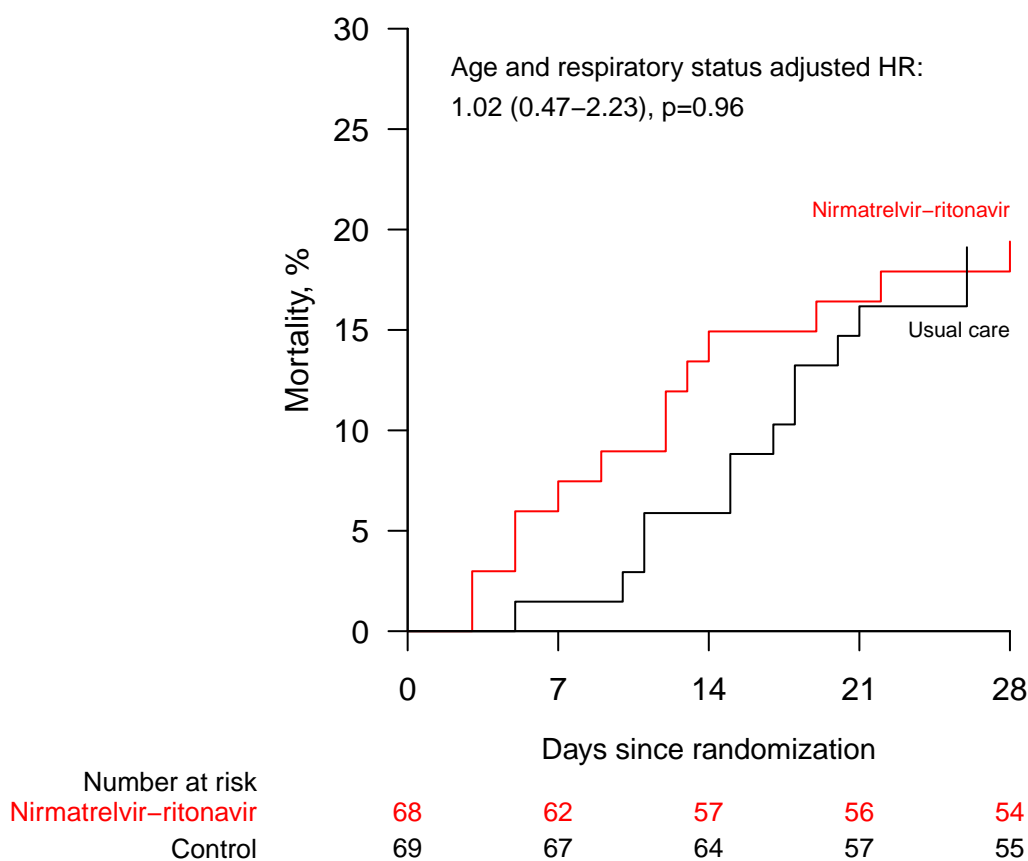
ITT=intention to treat. \*Number recruited overall during period that adult participants could be recruited into nirmatrelvir–ritonavir comparison.

**Figure 2: Effect of allocation to molnupiravir and nirmatrelvir–ritonavir on 28-day mortality**

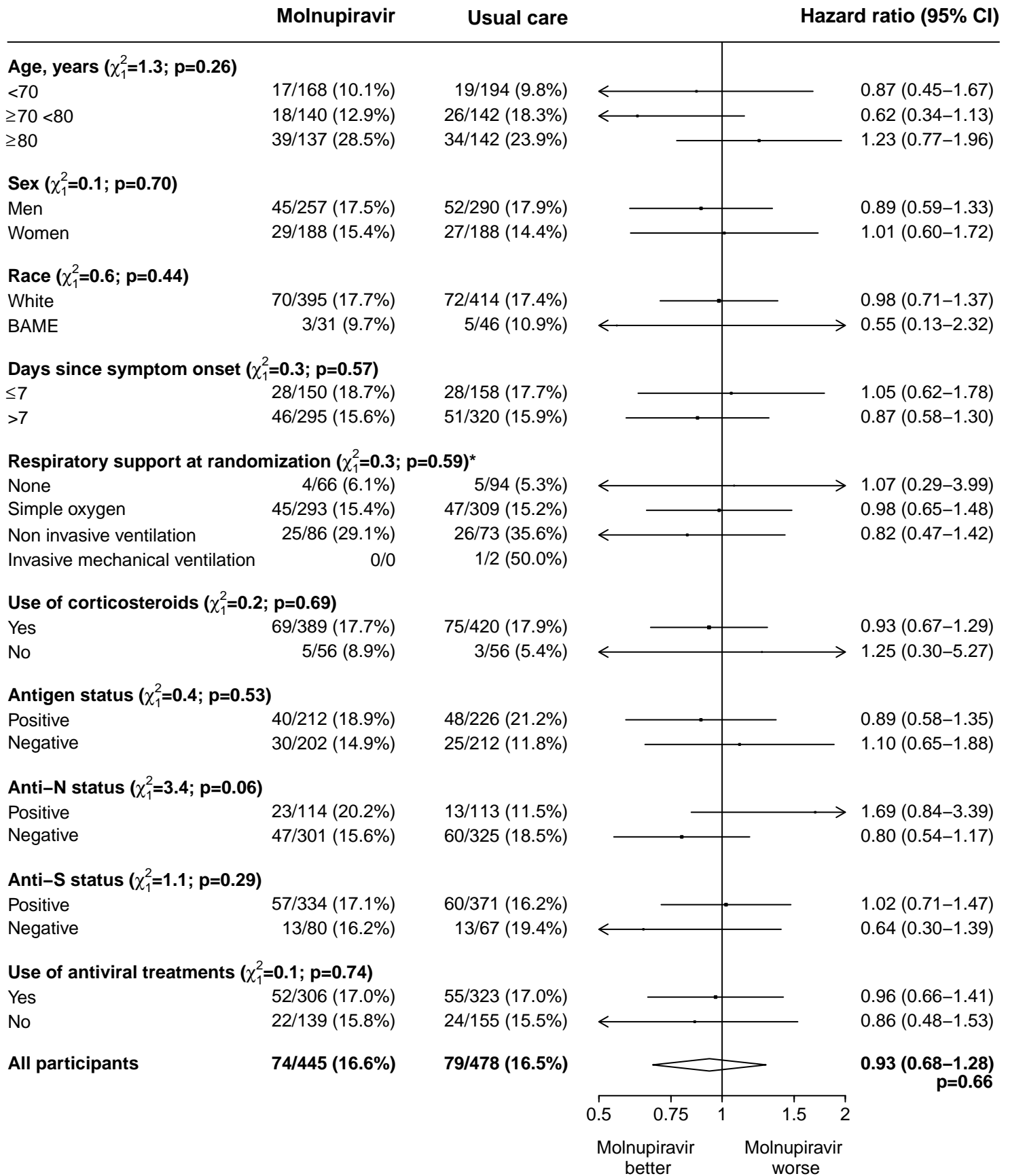
**(A) Molnupiravir**



**(B) Nirmatrelvir–ritonavir**



**Figure 3: Effects of allocation to molnupiravir on 28-day mortality by baseline characteristics**



\*Trend test does not include invasive mechanical ventilation due to insufficient numbers of patients.